



# AMERICAN BATTLE MONUMENTS COMMISSION INTERPRETIVE CENTER HONOLULU MEMORIAL NATIONAL MEMORIAL CEMETERY OF THE PACIFIC

## PROJECT APPLICANT

AMERICAN BATTLE MONUMENTS COMMISSION  
2300 CLARENDON BLVD, SUITE 500  
ARLINGTON, VA 22201

## PROJECT ADDRESS

NATIONAL MEMORIAL CEMETERY OF THE PACIFIC  
2177 PUOWAINA DR  
HONOLULU, HI 96813

## PREPARED BY

FAI ARCHITECTS  
1600 KAPIOLANI BLVD, SUITE 1700  
HONOLULU, HI 96814

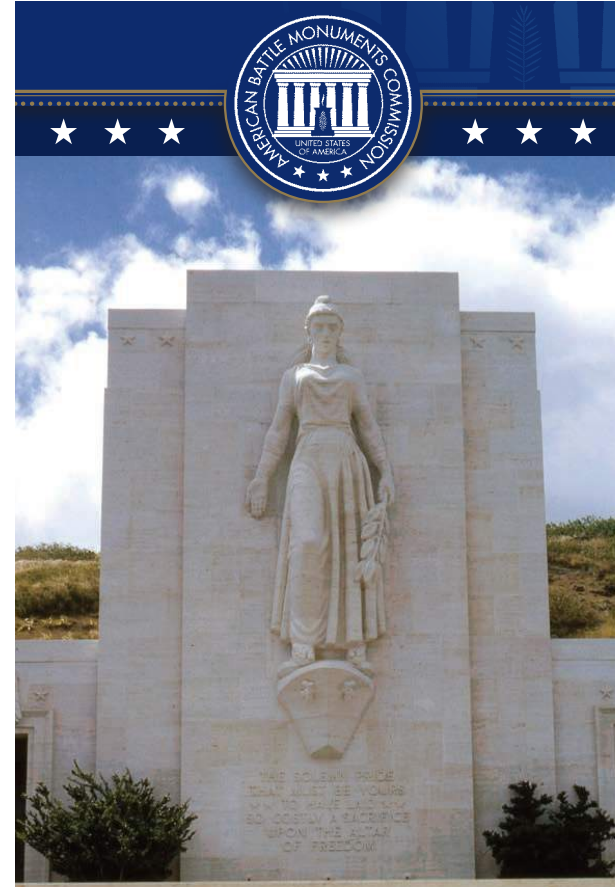


# Summary

ABMC currently seeks to provide educational displays of the Honolulu Memorial within the National Cemetery of the Pacific in Honolulu, Hawaii. The Honolulu Memorial is the only ABMC Memorial within a cemetery in the United States and is an extremely significant property listed on the National Register of Historic Places. The location of this proposed Interpretive Center is to the back of the Memorial in deference to the significance of the Memorial.

A Concept submittal was presented in February 2023. Current submittal is to illustrate how the team has addressed comments:

- Recommendation: Introduction of travertine at the entrances;
  - + Portal is completely clad in travertine in a shape that mimics the entrances to the map gallery in a simpler, modern way so as not to imitate the historic structure completely – size is dictated by structure and desire to have larger pieces of travertine rather than a tile-like appearance.
- Fewer materials in a simpler composition at entrance
  - + The doors will encompass the entire entrance.
  - + Art closures will also encompass the entire entrance, locked in an open position during open hours.
  - + ABMC is currently identifying an artist to assist with the creation of works of art at each portal/door. These works of art will be submitted in Fall 2023 after the artist has been fully engaged with the team.
- Facades at perimeter road: Organically-patterned precast concrete appears to compete with landscape
  - + Changed pattern to allude to the map gallery rhythm.
- Not a written comment, however concern of accessibility to North building had a few steps.
  - + Altered the path such that everyone follows a walkway that gently slopes down



# Background

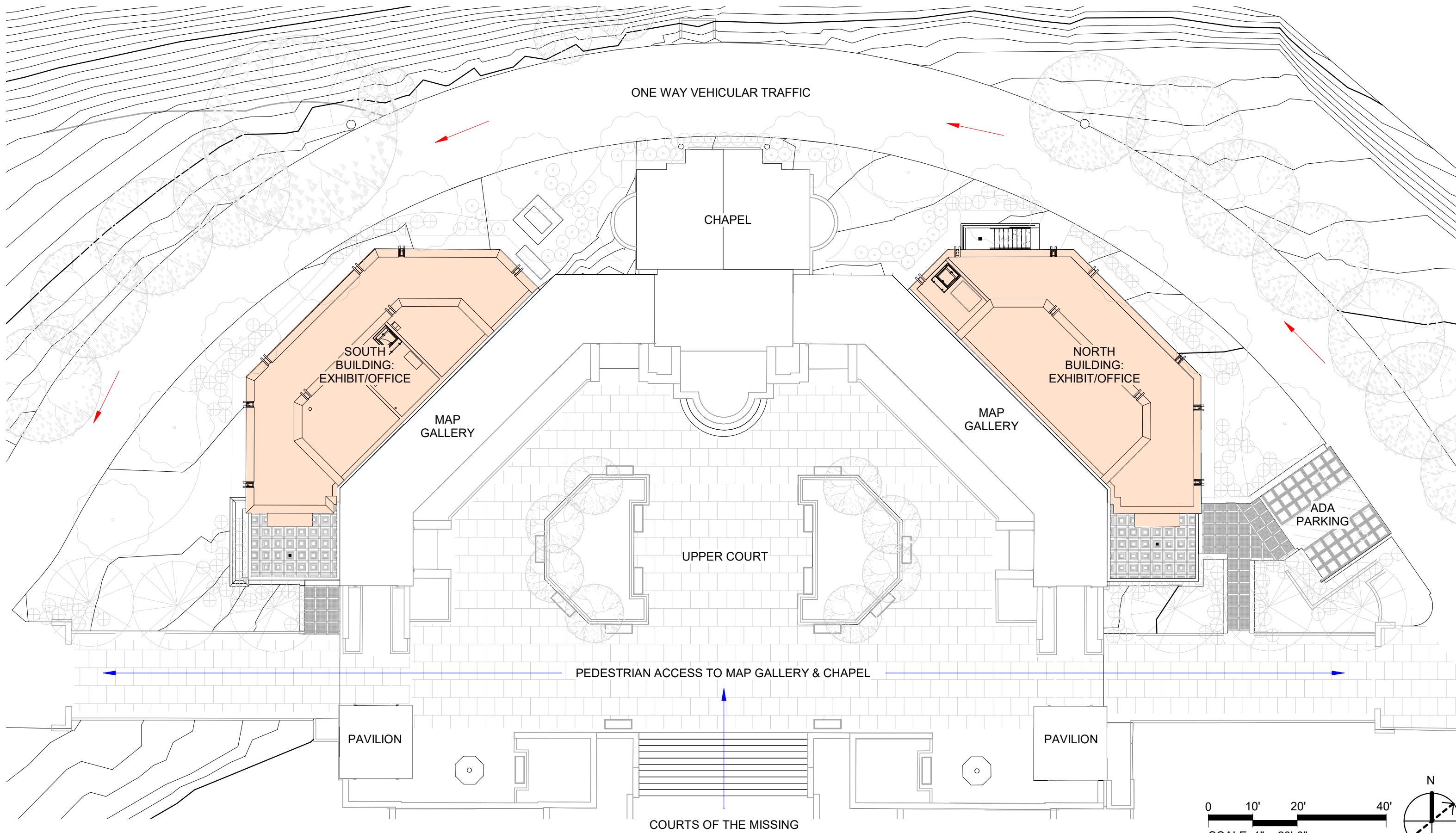
The National Cemetery of the Pacific is a Nationally Registered historic site and sits within, Puowaina, a culturally significant landmark in Hawaii. Geologically, Puowaina is an extinct volcanic tuff cone, formed 75,000 to 100,000 years ago.

Puowaina most often translates to “Hill of Sacrifice” a place many believe human sacrifices were conducted at heiau (temples) along the south slopes of the crater. Nothing remains of these heiau today. Tunnels and batteries were constructed towards the end of World War II and the cemetery was constructed in the 1950s.

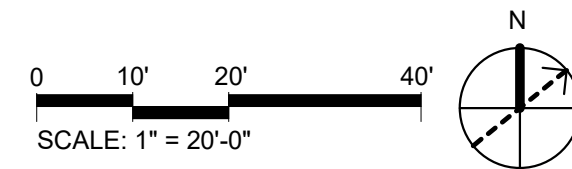
Today, the crater is often referred to as Punchbowl due to its shape and is a landmark on the landscape of Honolulu. It is the resting place of many of the heroes who made the ultimate sacrifice for the freedom we can enjoy today.

The Courts of the Missing within the ABMC Memorial recognize those who are missing in action from World War II, the Korean War and the Viet Nam War. The Interpretive Center will tell the stories of these service members.





Site Plan





**CONCEPT SUBMISSION FEBURARY 2ND 2023**



**PROPOSED JUNE 1ST 2023**

NORTH ENTRY AT EXHIBIT LEVEL





**CONCEPT SUBMISSION FEBURARY 2ND 2023**



**PROPOSED JUNE 1ST 2023**

NORTH ENTRY PARKING





NORTH ENTRY APPROACH RENDERED





**CONCEPT SUBMISSION FEBURARY 2ND 2023**



**PROPOSED JUNE 1ST 2023**

BEHIND MEMORIAL



American Battle Monuments Commission Interpretive Center  
Honolulu Memorial: National Memorial Cemetery of the Pacific

U.S. Commission of Fine Arts  
June 1, 2023 | 07



**CONCEPT SUBMISSION FEBURARY 2ND 2023**



**PROPOSED JUNE 1ST 2023**

EXHIBIT WEST SIDE



American Battle Monuments Commission Interpretive Center  
Honolulu Memorial: National Memorial Cemetery of the Pacific

U.S. Commission of Fine Arts  
June 1, 2023 | 08





**CONCEPT SUBMISSION FEBURARY 2ND 2023**



**PROPOSED JUNE 1ST 2023**

OFFICE EAST SIDE



American Battle Monuments Commission Interpretive Center  
Honolulu Memorial: National Memorial Cemetery of the Pacific

U.S. Commission of Fine Arts  
June 1, 2023 | 09



**CONCEPT SUBMISSION FEBRUARY 2ND 2023**



**PROPOSED JUNE 1ST 2023**

SOUTH ENTRY OFFICE LEVEL



American Battle Monuments Commission Interpretive Center  
Honolulu Memorial: National Memorial Cemetery of the Pacific

U.S. Commission of Fine Arts  
June 1, 2023 | 10



SOUTH ENTRY APPROACH RENDERED





**CONCEPT SUBMISSION FEBRUARY 2ND 2023**



**PROPOSED JUNE 1ST 2023**

SOUTH ENTRY APPROACH





SOUTH ENTRY APPROACH ABOVE RENDERED





## LOBBY DOORS

The exterior lobby doors will be created by an artist selected by a committee composed of representatives from ABMC, USACE and FAI. The artist will collaborate with the team and the design will be submitted to CFA for approval at a later time.



### MATERIALS CONCEPTS



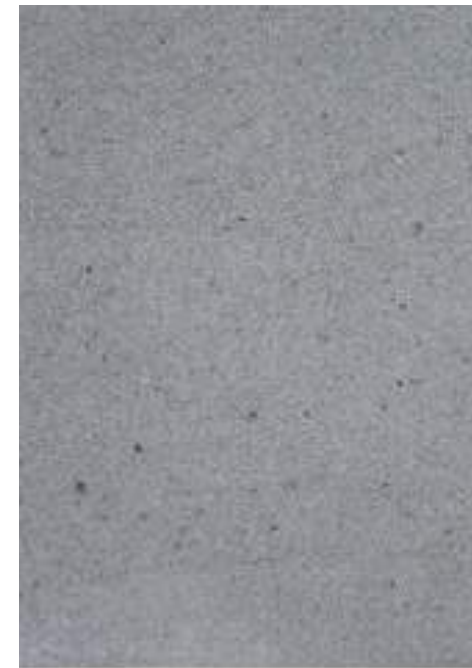
## EXTERIOR WALLS

The majority of the exposed walls are proposed to be of exposed aggregate precast concrete panels. The finish will be similar to the Courts of the Missing Wall as shown. The aggregate consists of basalt stone and is slightly darker than the rear of the Memorial. The pattern of the panels will be done to allude to the rhythm of the map gallery on the Upper Court side.



## TRAVERTINE ENTRY

The travertine in a color similar to existing will be used as the entry portal to the exhibits on each building to relate the Interpretive Center to the Memorial. A simple portal to resemble the entry to the map gallery while remaining contemporary is proposed. Additionally the travertine is proposed as coping along the parapet walls and lower walls.



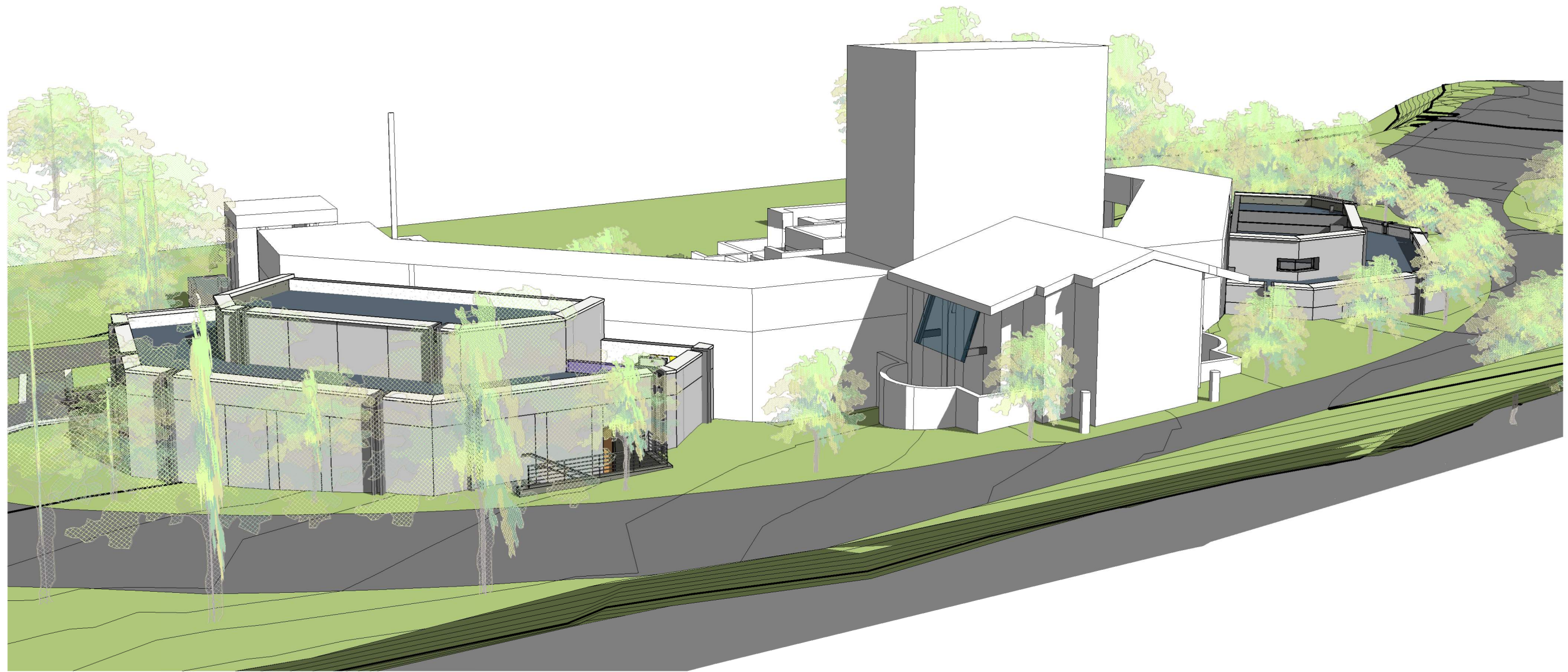
## BASALT DOWNSPOUT FIN WALLS

The exterior downspouts will be flanked by honed basalt fin walls to pick up the color in the aggregate. The downspouts will be placed to match the rhythm of the panels.

## WALK WAYS & PARKING

The walkways and parking will be composed of porphyry pavement in a varied pattern with concrete and porphyry similar to the pattern at the accessible parking stalls.





Exterior View





2,400 S.F.  
GREEN LIRIOPE (EVERGREEN)  
SPRIGS @ 6" O.C.

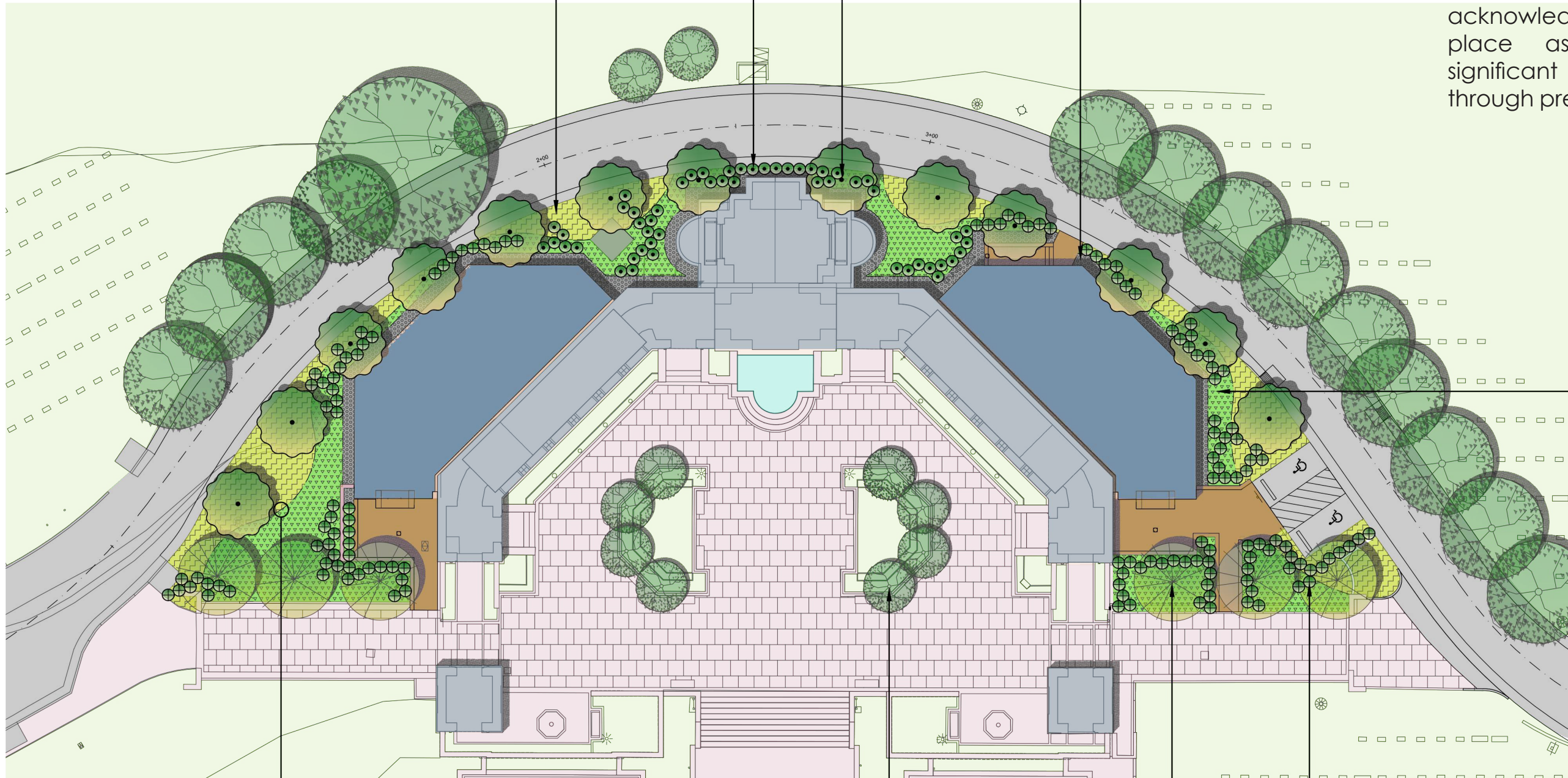
52 EA.  
'A'ALI'  
3 G.C.

13 EA.  
KOAI'A  
25 G.C.

MAINTENANCE STRIP:  
6" LAYER 'ILI'ILI STONE WITH  
1,075 S.F. GEOTEXTILE WEED  
CONTROL FABRIC BELOW

The new landscape proposal will feature more native Hawaiian plants for their durability in Hawaii's climate and to respectfully acknowledge Punchbowl's place as a culturally significant landmark through pre-contact history

3,425 S.F.  
50/50 BLEND OF  
PALAPALAI &  
KUPUKUPU FERNS  
1 G.C. @ 12" O.C.



725 L.F.  
BASALT BRICK HEADER

EXISTING TREES IN AREA  
TO REMAIN  
(TYPICAL)

142 EA.  
NANU (NATIVE WHITE GARDENIA)  
3 G.C.

LANDSCAPE PLANTING PLAN

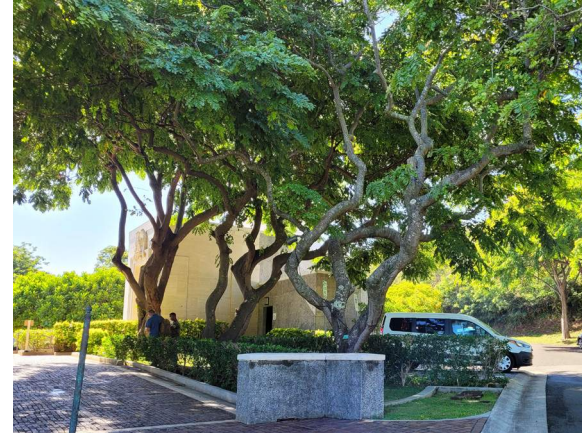


Native, drought tolerant Koai'a trees will form the canopy of the landscape, at the highest level, and provide a sense of scale against the new ABMC building in the background.

**TREES**



Koai'a (Native)



Existing Shower Trees to Remain



Existing Courtyard Trees to Remain

Flowering shrubs with subdued and subtle colors will fill the mid-level range of planting while bands of meandering ferns and lilyturf establish a foundation at the base of the landscaping.

**SHRUBS**



'A'ali'i Flower Detail (Native)



'A'ali'i (Native)



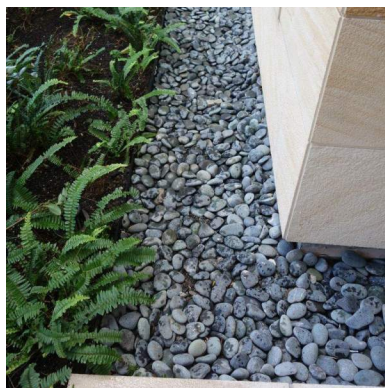
Nanu Flower Detail (Native)



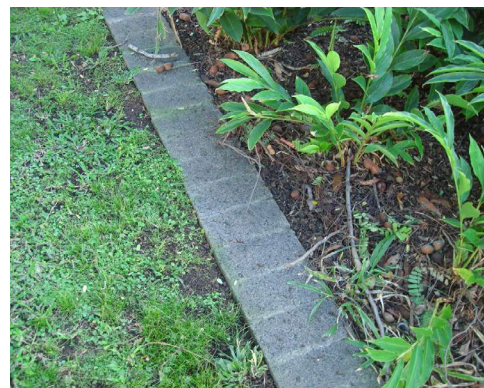
Nanu (Native)

The plant selections draw heavily from Hawai'i's native and indigenous palette. Not only are native material climatically adapted for the region but each species has significant cultural importance with uses ranging from medicinal to recreational to agricultural.

**GROUND COVER**



'Ili'iili Stone Maintenance Strip



Basalt Brick Header



Palapalai Fern (Native)



Green Lirioppe



Kupukupu Fern (Native)

LANDSCAPE PLANTING PALETTE





# AMERICAN BATTLE MONUMENTS COMMISSION INTERPRETIVE CENTER HONOLULU MEMORIAL NATIONAL MEMORIAL CEMETERY OF THE PACIFIC



# THANK YOU

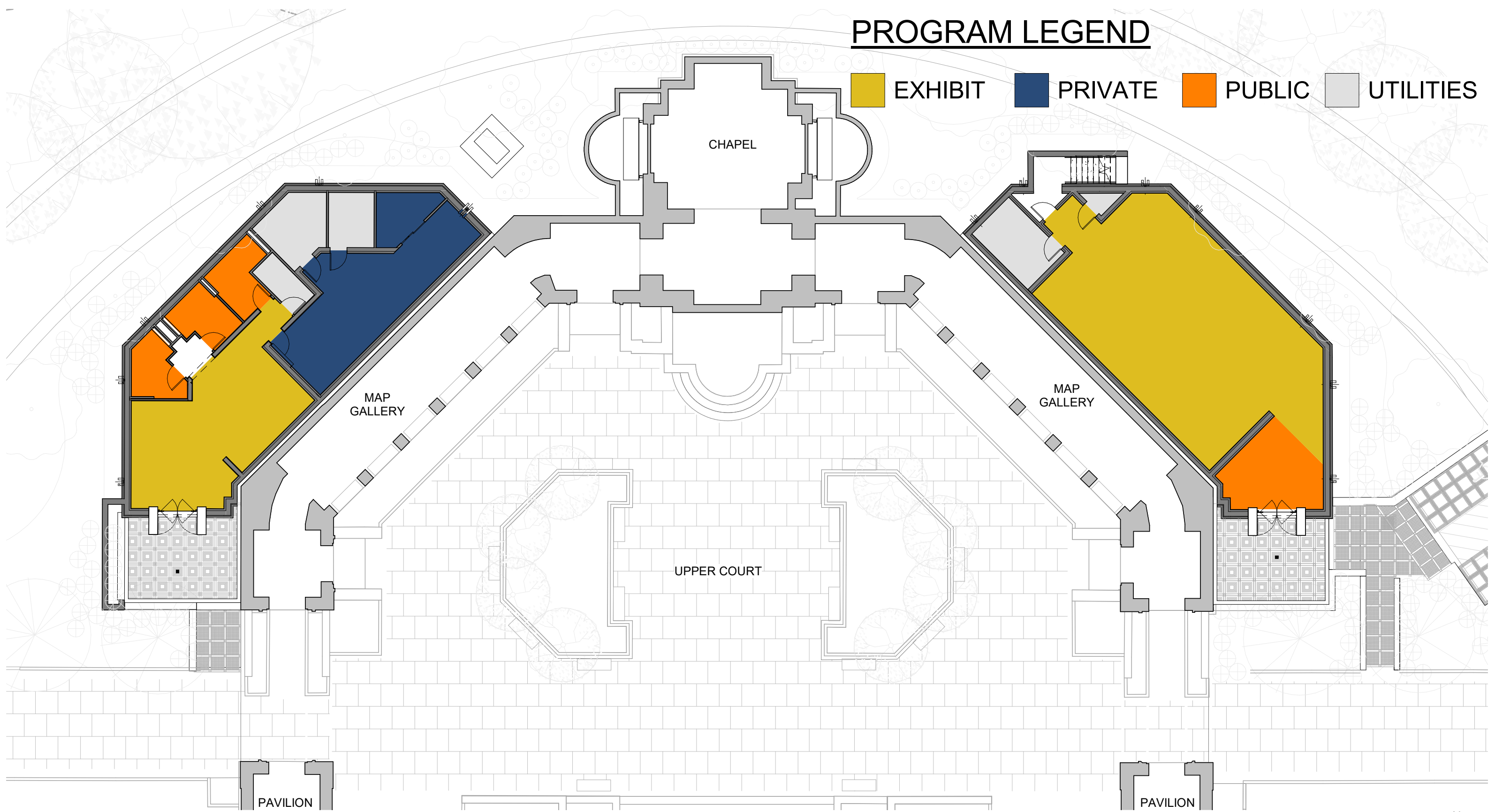


A PRESENTATION FOR CFA BY

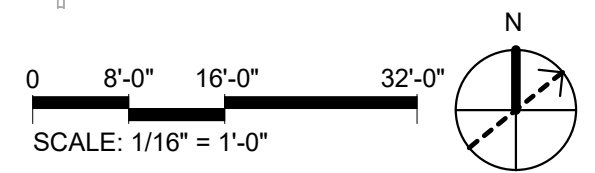


# PROGRAM LEGEND

EXHIBIT PRIVATE PUBLIC UTILITIES

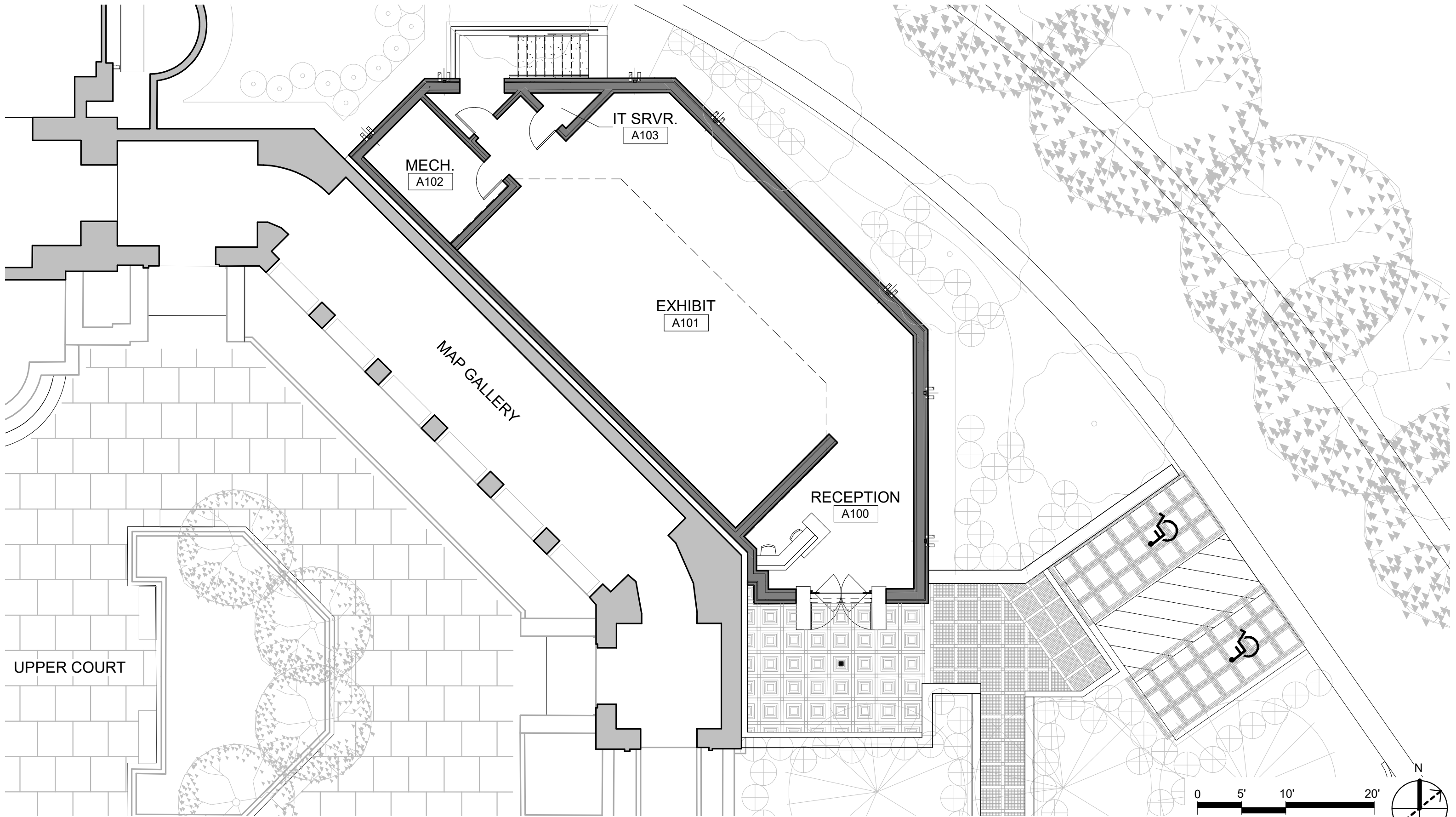


FLOOR PLANS



American Battle Monuments Commission Interpretive Center  
Honolulu Memorial: National Memorial Cemetery of the Pacific

U.S. Commission of Fine Arts  
June 1, 2023 | A1



Main Exhibit Floor Plan



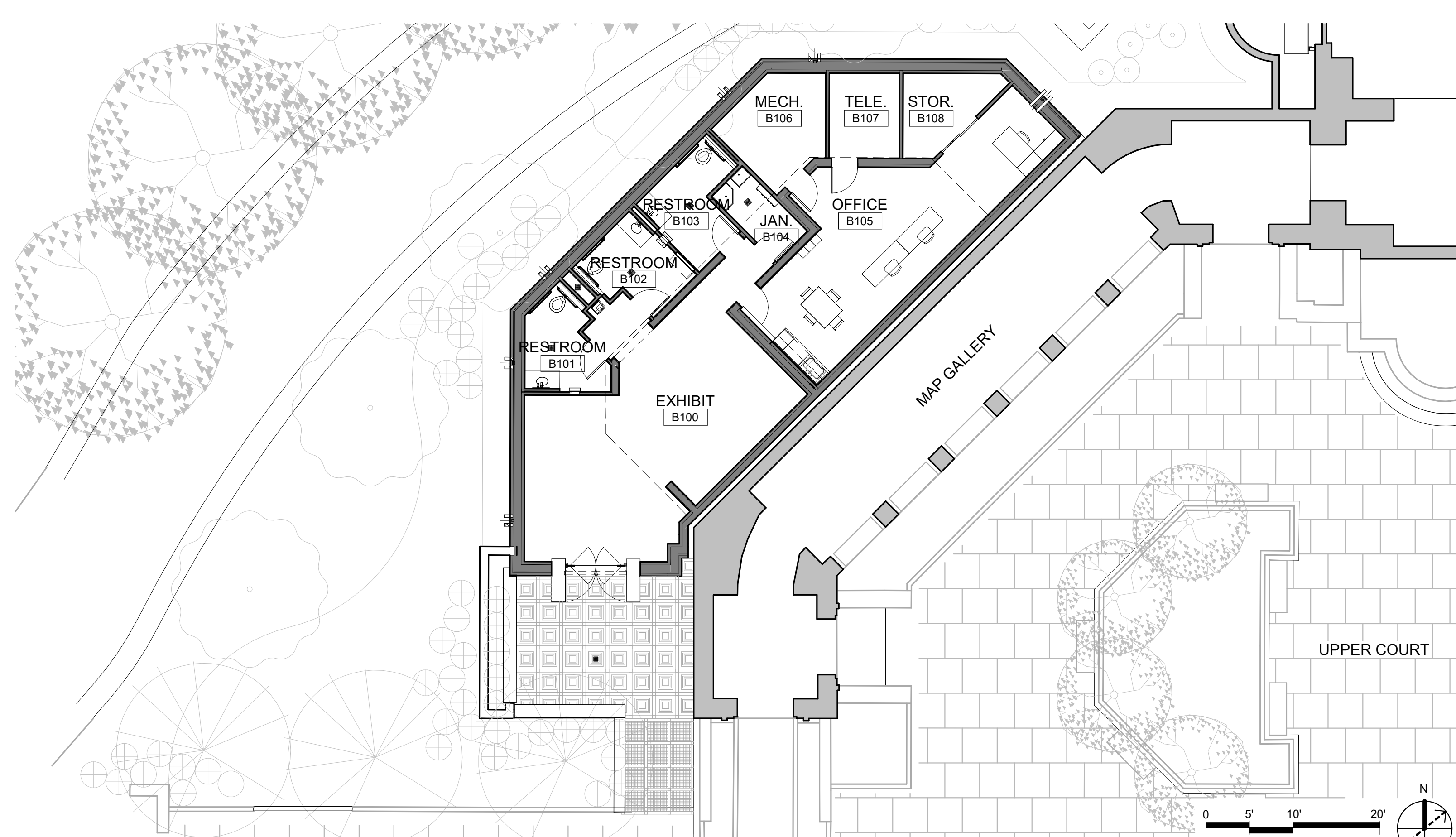
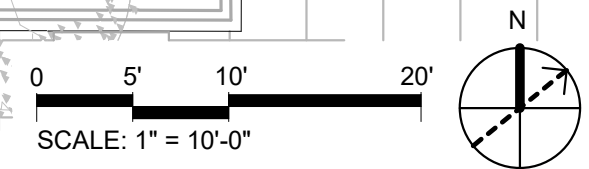


Exhibit & Office Floor Plan



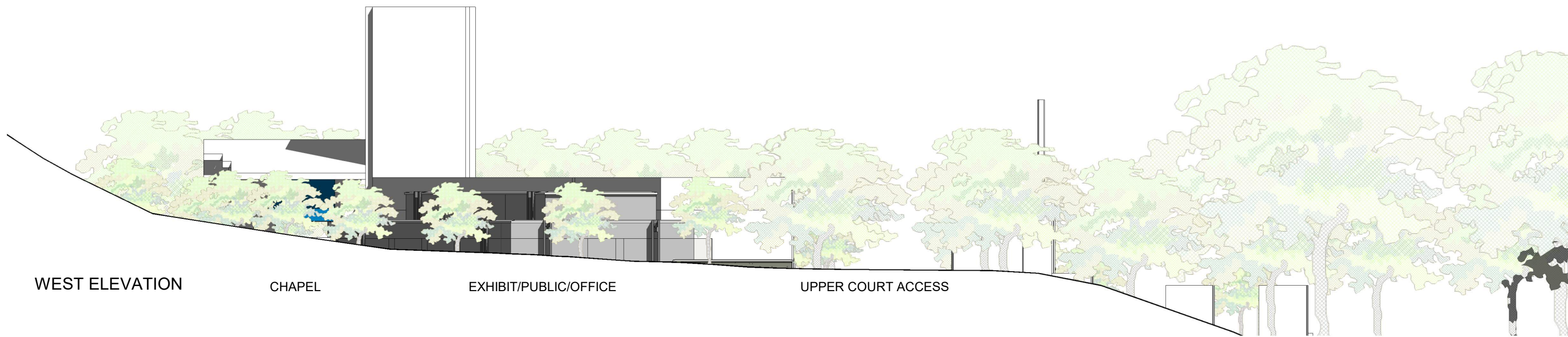


EAST ELEVATION

UPPER COURT ACCESS

MAIN EXHIBIT

CHAPEL

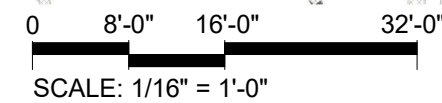


WEST ELEVATION

CHAPEL

EXHIBIT/PUBLIC/OFFICE

UPPER COURT ACCESS



Exterior Elevation







MAIN EXHIBIT

CHAPEL

EXHIBIT/OFFICE

NORTH ELEVATION

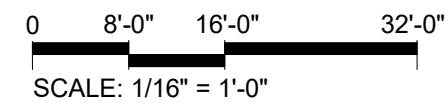


EXHIBIT/OFFICE

UPPER COURT

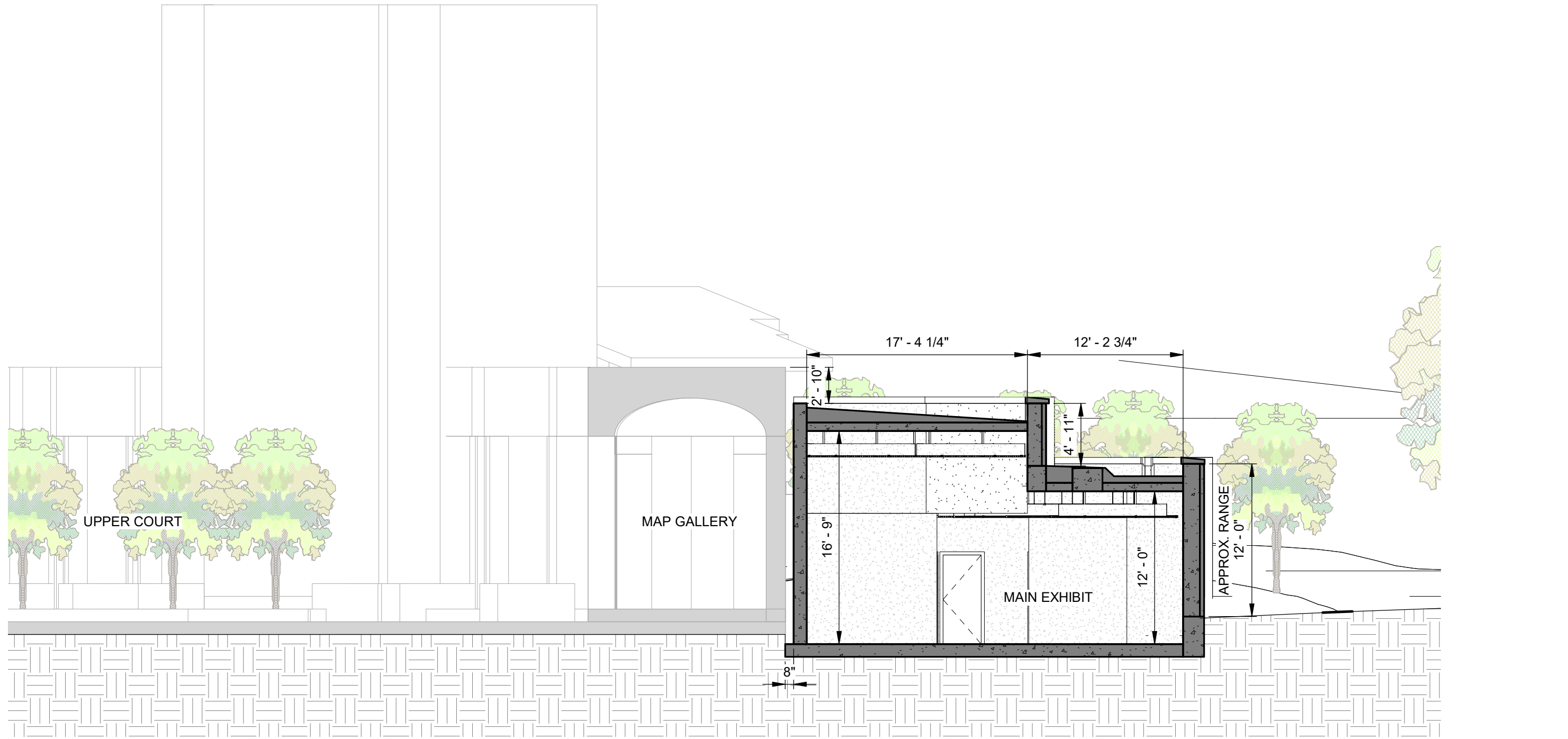
MAIN EXHIBIT

SOUTH ELEVATION



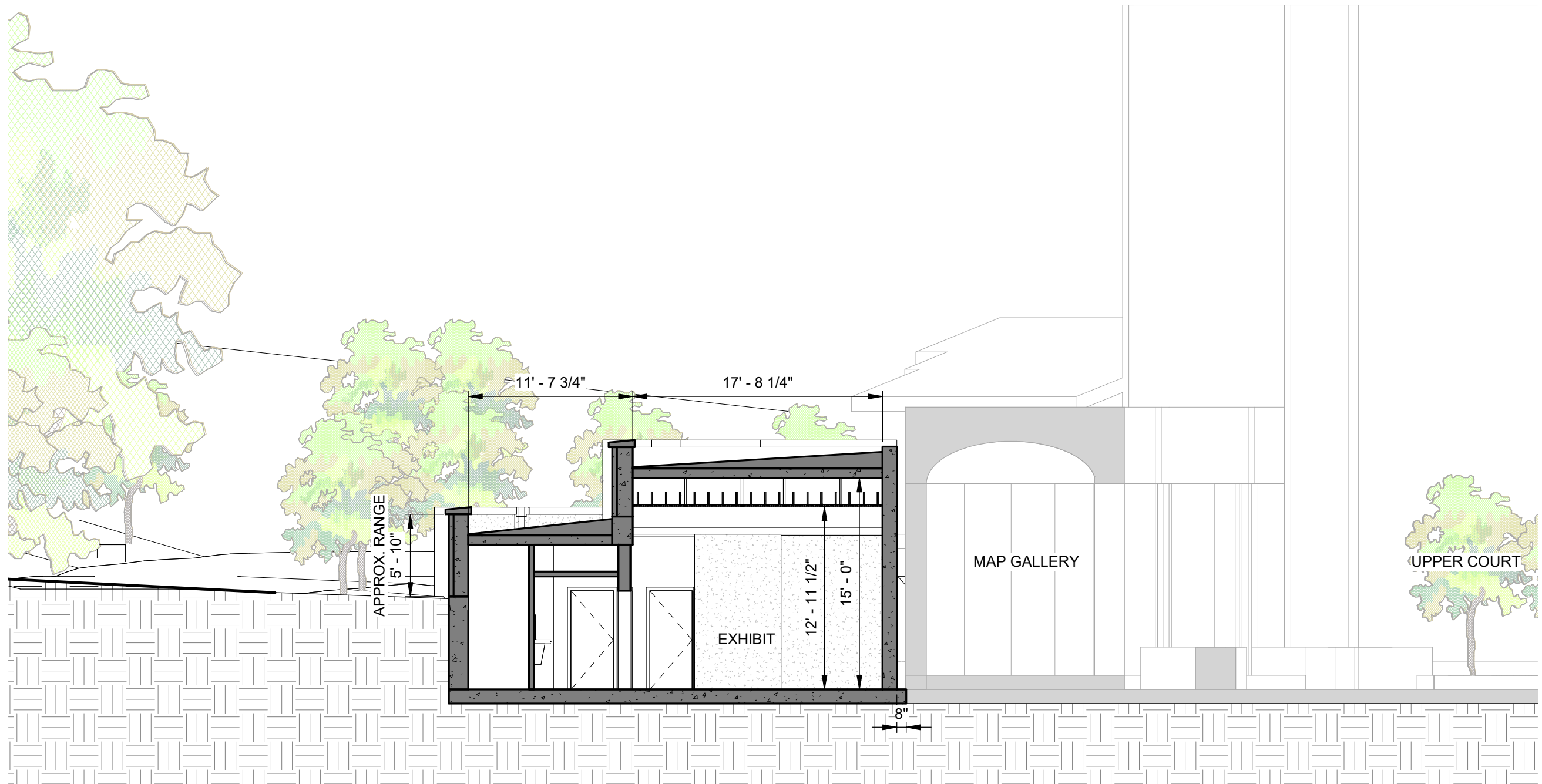
Exterior Elevation



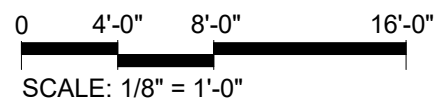


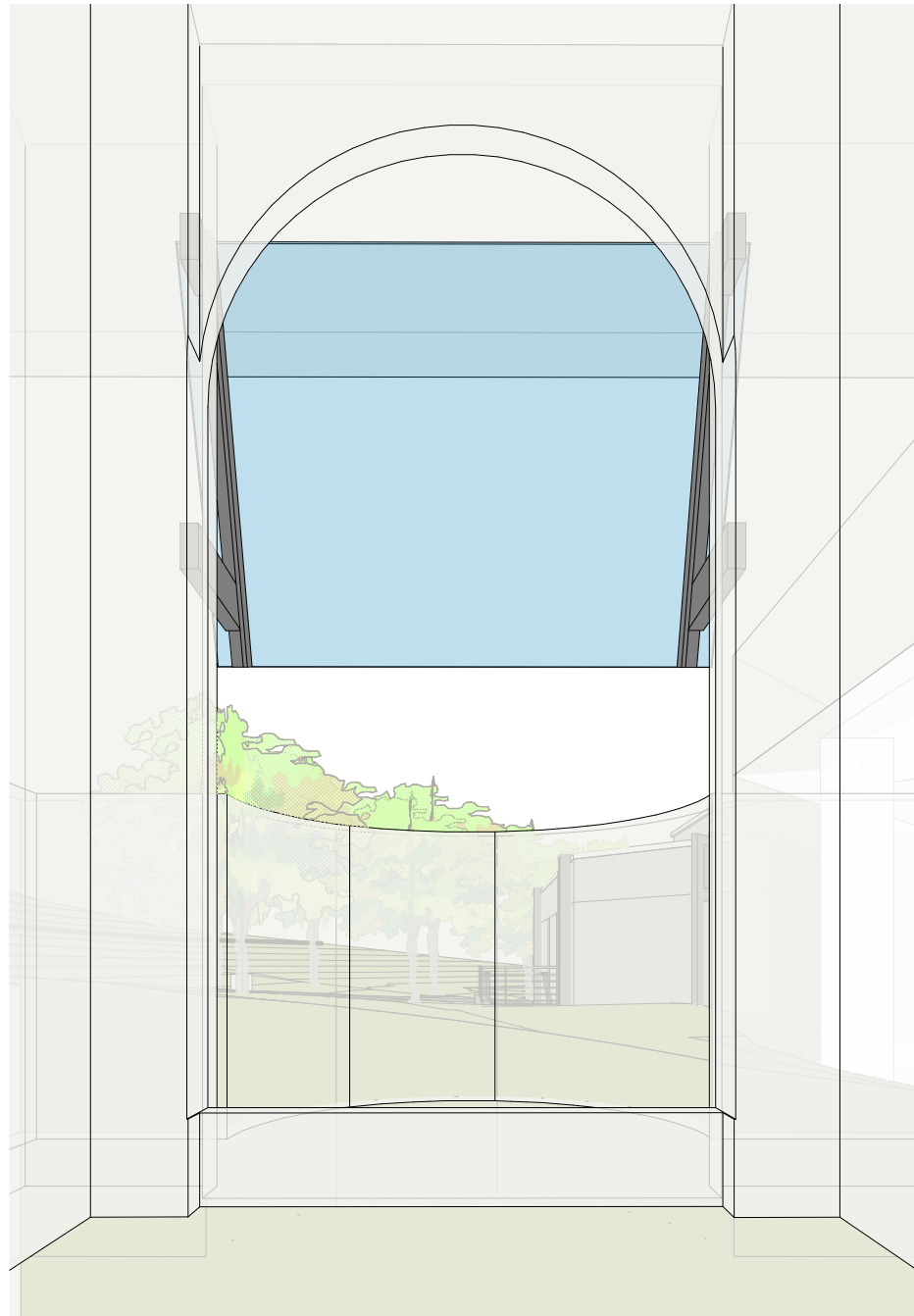
Building Section



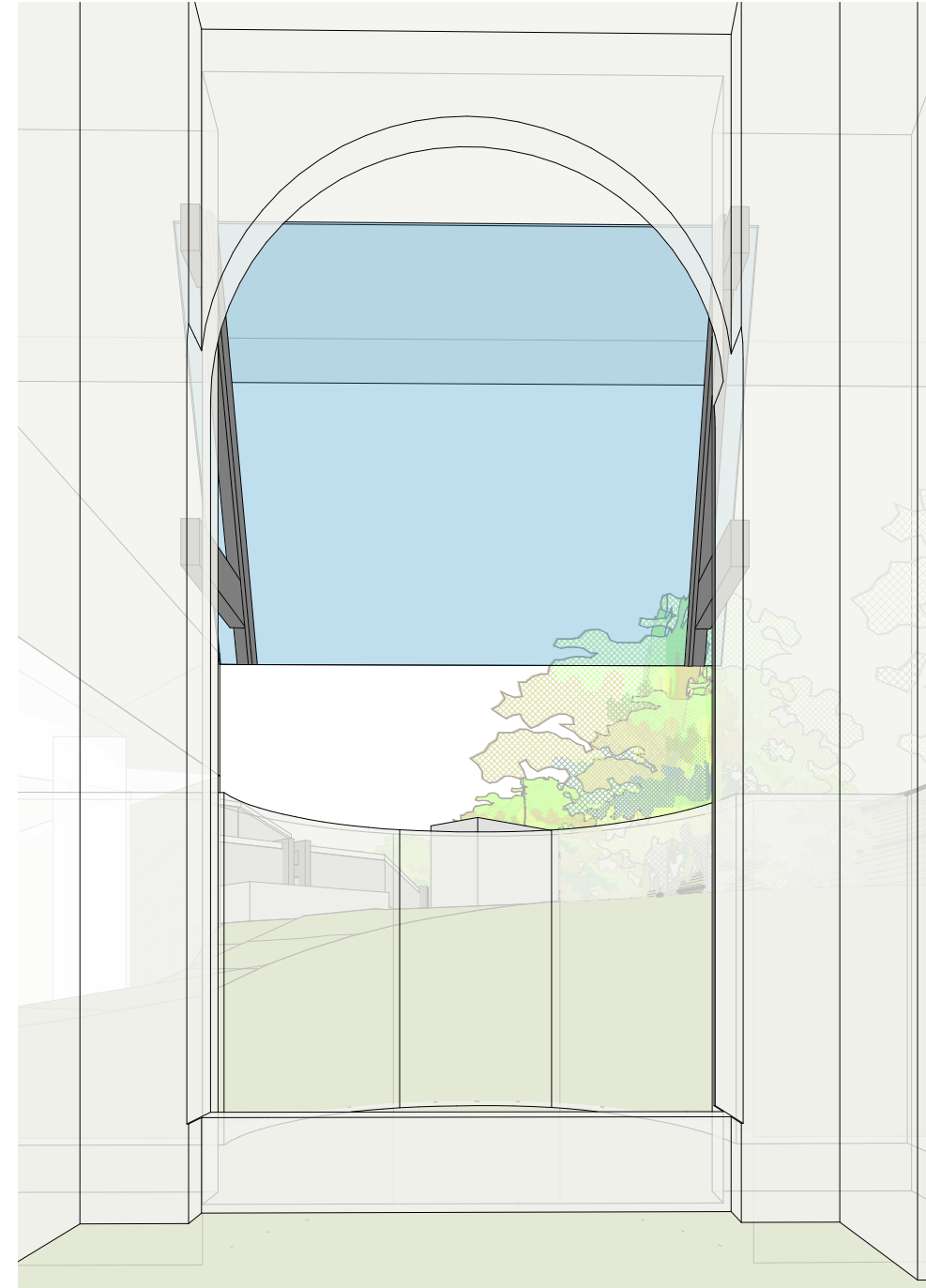


Building Section





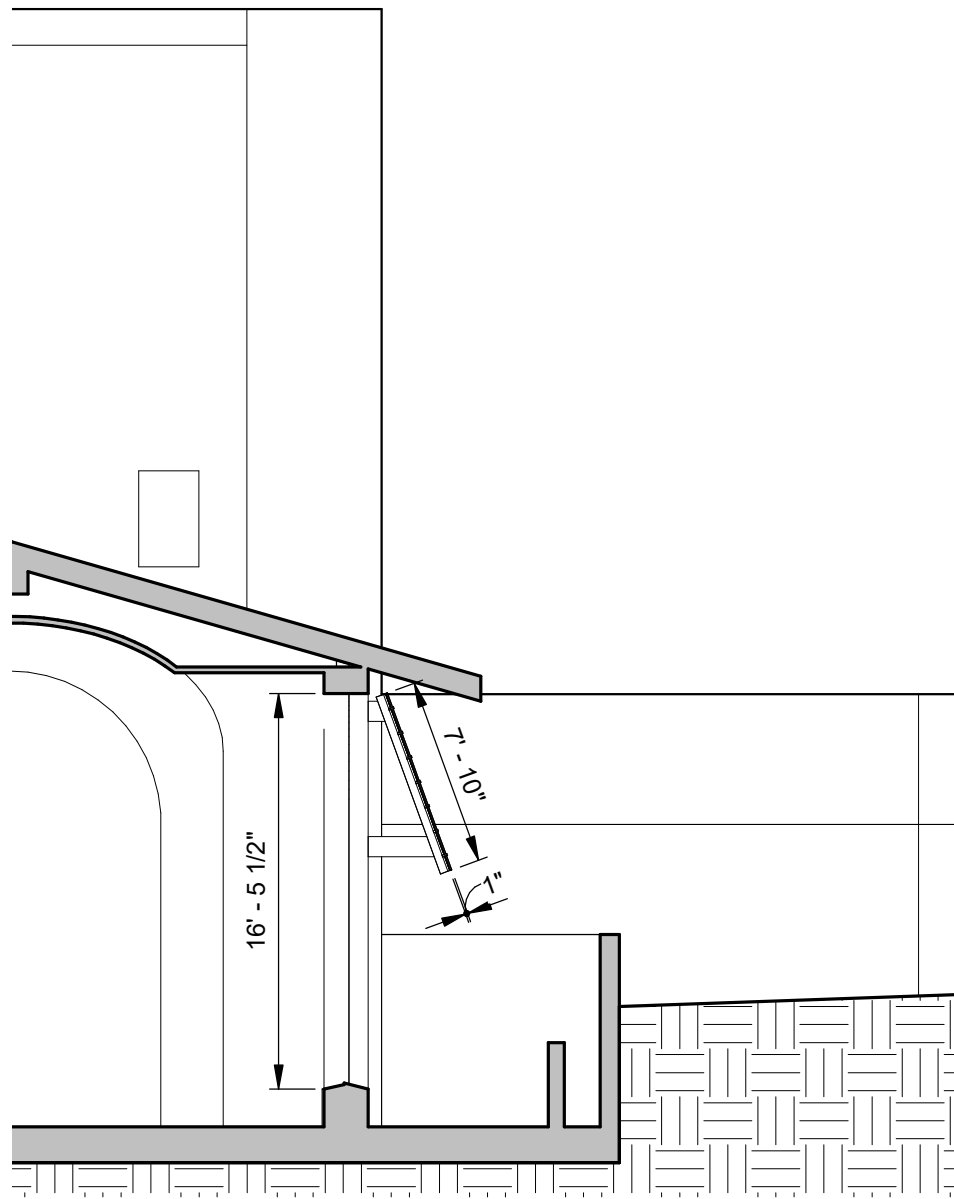
VIEW TO THE EAST (MAIN EXHIBIT)



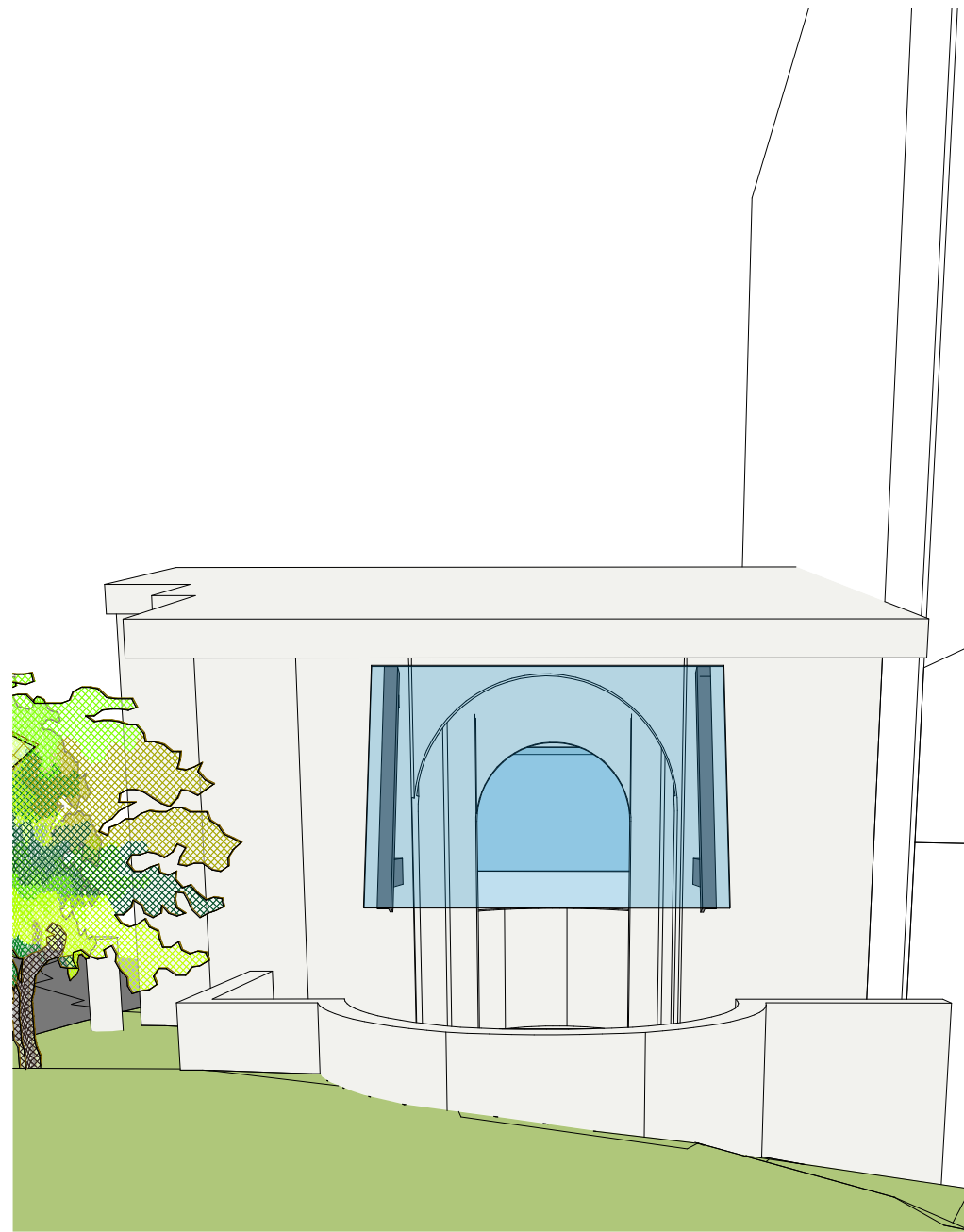
VIEW TO THE WEST (OFFICE)

View from Chapel

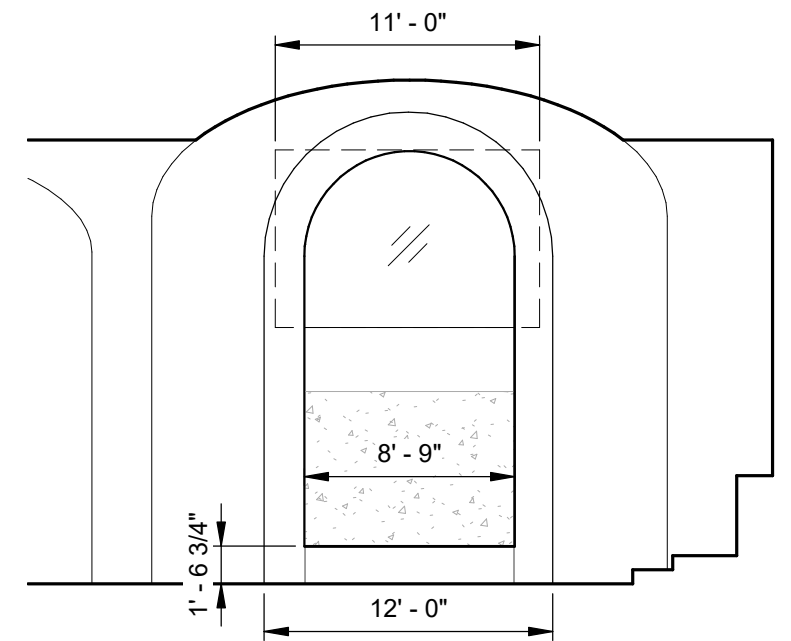




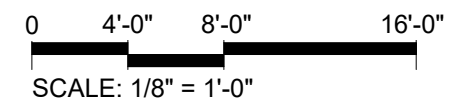
PARTIAL TRANSVERSE BUILDING SECTION AT CHAPEL



CHAPEL EXTERIOR ELEVATION - VIEW FROM S. BLDG.



CHAPEL INTERIOR ELEVATION - VIEW TO S. BLDG

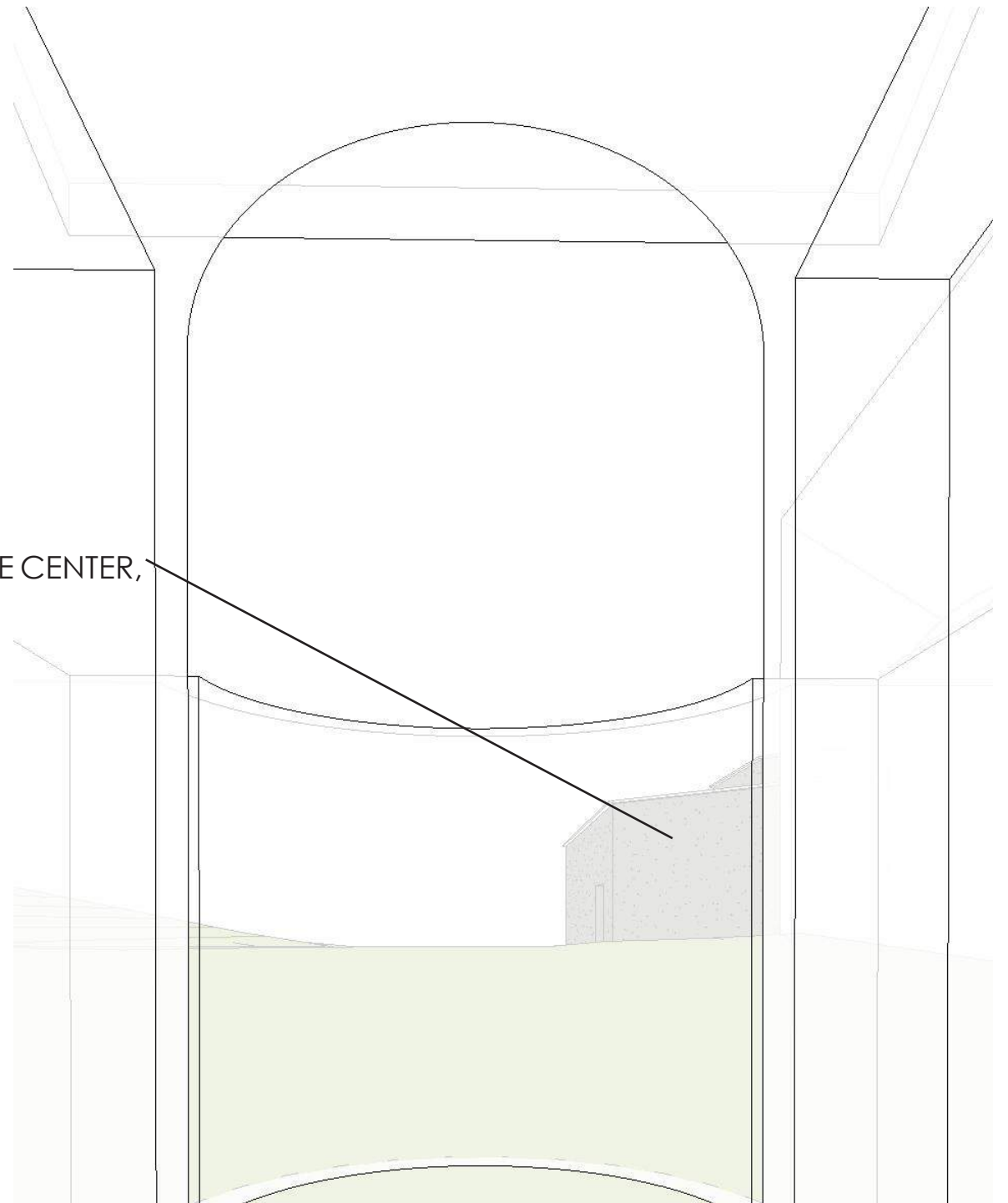


New Chapel Awning





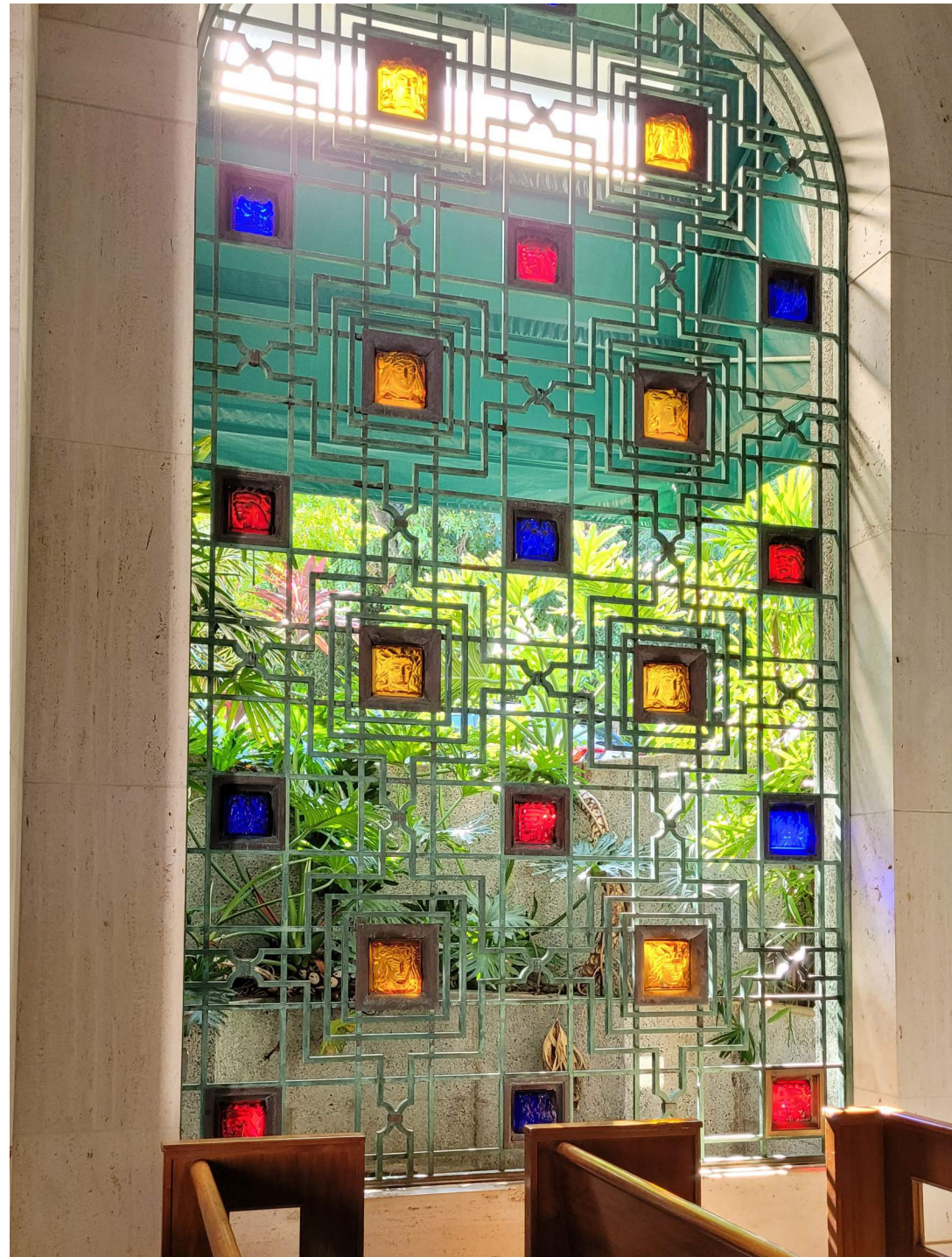
**NORTH EXISTING**



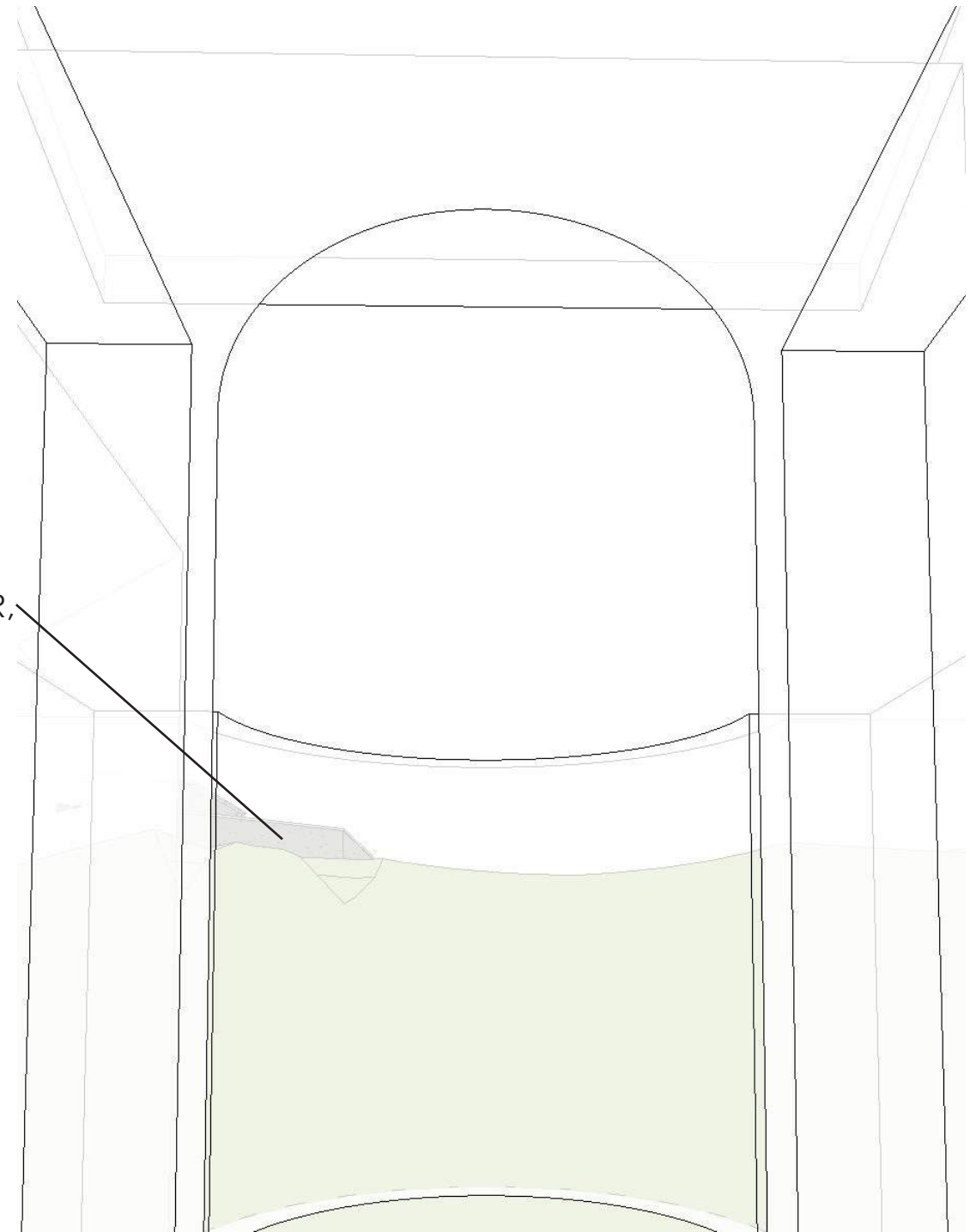
**NORTH PROPOSED**

VIEW FROM CHAPEL





**SOUTH EXISTING**



INTERPRETIVE CENTER,  
BEYOND

**SOUTH PROPOSED**

VIEW FROM CHAPEL

