

CONSTITUTION GARDENS | LAKE PROJECT
CFA REVIEW

PWP LANDSCAPE ARCHITECTURE
JULY 06, 2023

CONSTITUTION GARDENS FULL PROJECT AREA
- CFA CONCEPT APPROVAL, RECEIVED SEPT. 2014

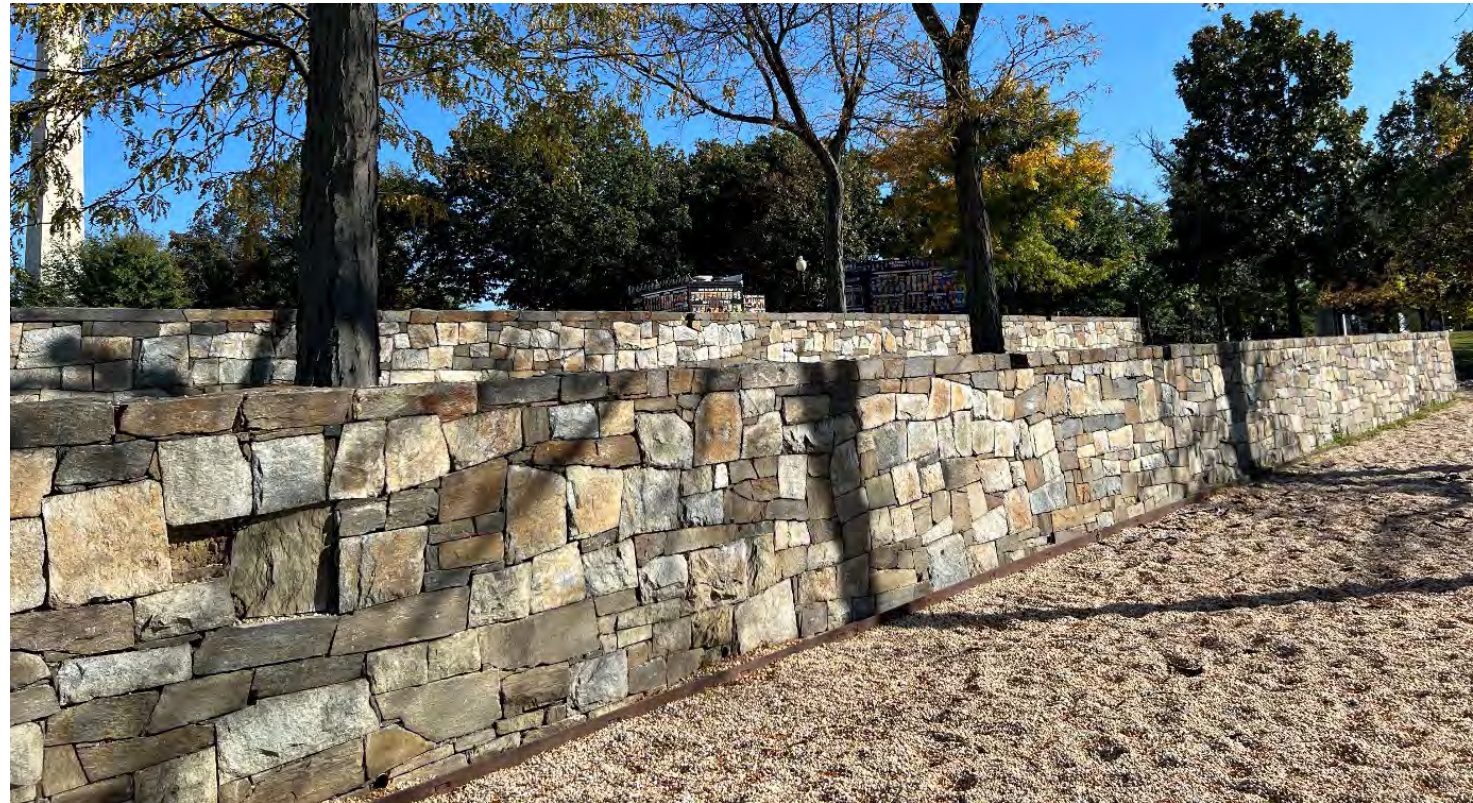
PHASE 2: CONSTITUTION
GARDENS LAKE PROJECT

Phase 1: Lockkeeper's House Relocation and Plaza
- Completed 2018



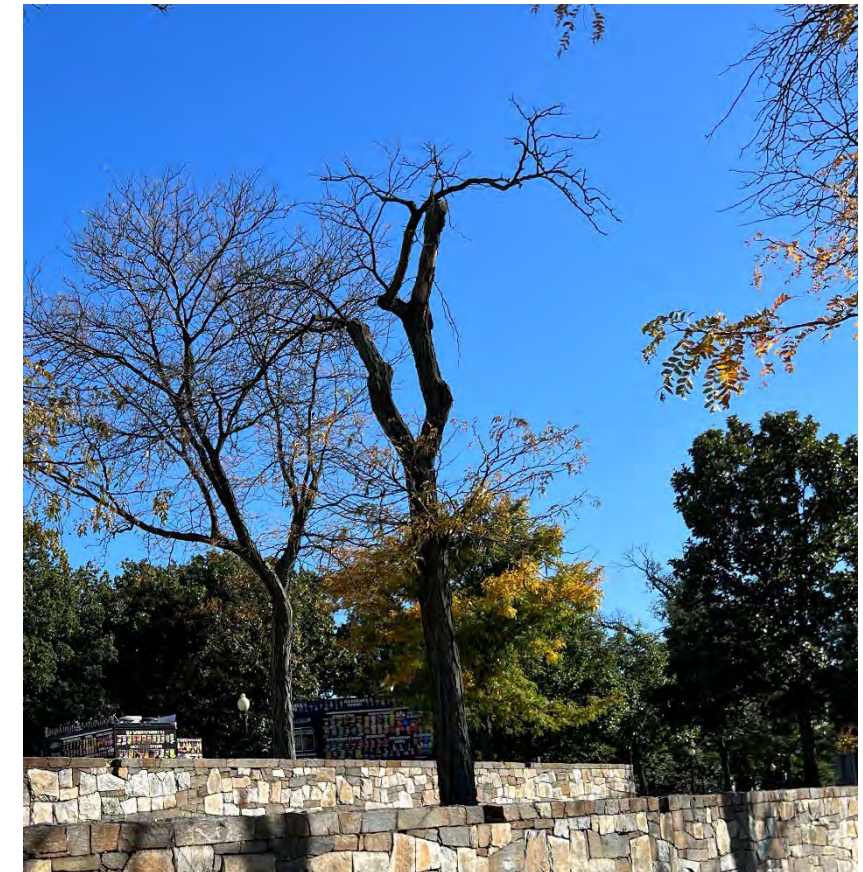


PURPOSE AND NEED



COMPARATIVE TREE HEALTH SURVEYS AT THE FULL CONSTITUTION GARDENS SITE 2014 | 2022

- A Tree Health Survey was performed on the entire Constitution Gardens Project Site in 2014 and then again in 2022.
- These tree health surveys were compared and used to track the overall health of the trees within Constitution Gardens.
- The comparison of these surveys shows unequivocal, significant tree health decline, as had also been found in the years prior to 2014
- 114 Trees were removed in the past 8 years (22% Removed)
- 56 Trees have declined in health and are now recommended for removal. (13% of the trees that remain on site)
- 416 Trees are Existing On Site
 - 10 are Dead
 - 94 are in Poor Health
 - 155 are in Fair Health
 - 157 are in Good Health (this is a 46% reduction from the number categorized as 'Good' in 2014)
- Of the 157 Trees in Good Health, Construction Activities will impact the more than 30% of the Critical Root Zone of 59 Trees.



HISTORICAL CONTEXT

- **1810-1828**

Construction of Canals

- **1837**

Lockkeeper's House is constructed

- **1901**

McMillan Plan and updates identify the Constitution Gardens site as a naturalistic park area composed in a manner fit for passive recreation

- **1915**

Lockkeeper's House relocated

- **1918**

Navy Munitions buildings constructed on Constitution Gardens site. Demolished in 1970.

- **1970**

Military buildings were demolished on site and SOM develops plans for Constitution Gardens

- **1976**

Constitution Gardens is dedicated for the Bicentennial of the American Revolution

- **1984**

56 Signers of the Declaration of Independence Memorial dedicated

- **2010**

The National Mall Plan identifies Constitution Gardens for Respectful Rehabilitation

- **2012**

The Trust For the National Mall manages a Design Competition for the Constitution Gardens site and three other sites on the National Mall



1865



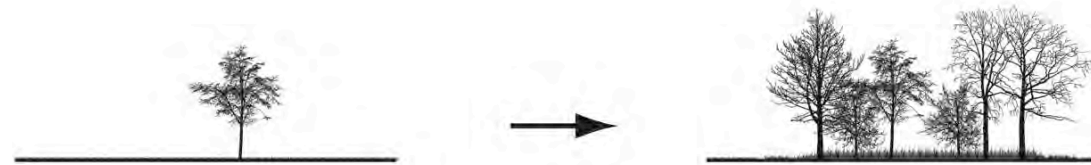
1938



Water Quality Improvements



Re-grade site to better horticultural conditions and to create a quiet restful garden



Diversify Plant Community



Locate Pavilion to the West to retain walk to the WWII Memorial



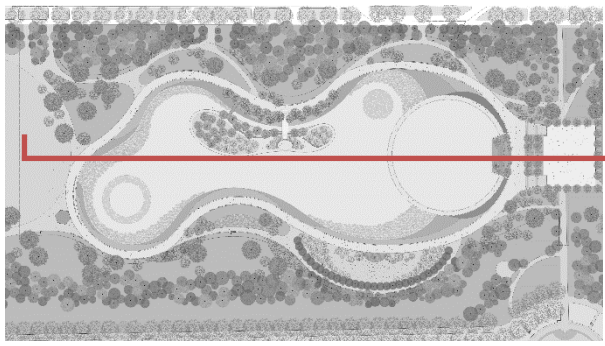
Enhanced circulation to respond to additional memorials and changed use patterns



CONSTITUTION GARDENS – FULL SITE

CONCEPT APPROVAL: Received September 2014





KEY PLAN



SITE SECTION



SITE SECTION – EAST END

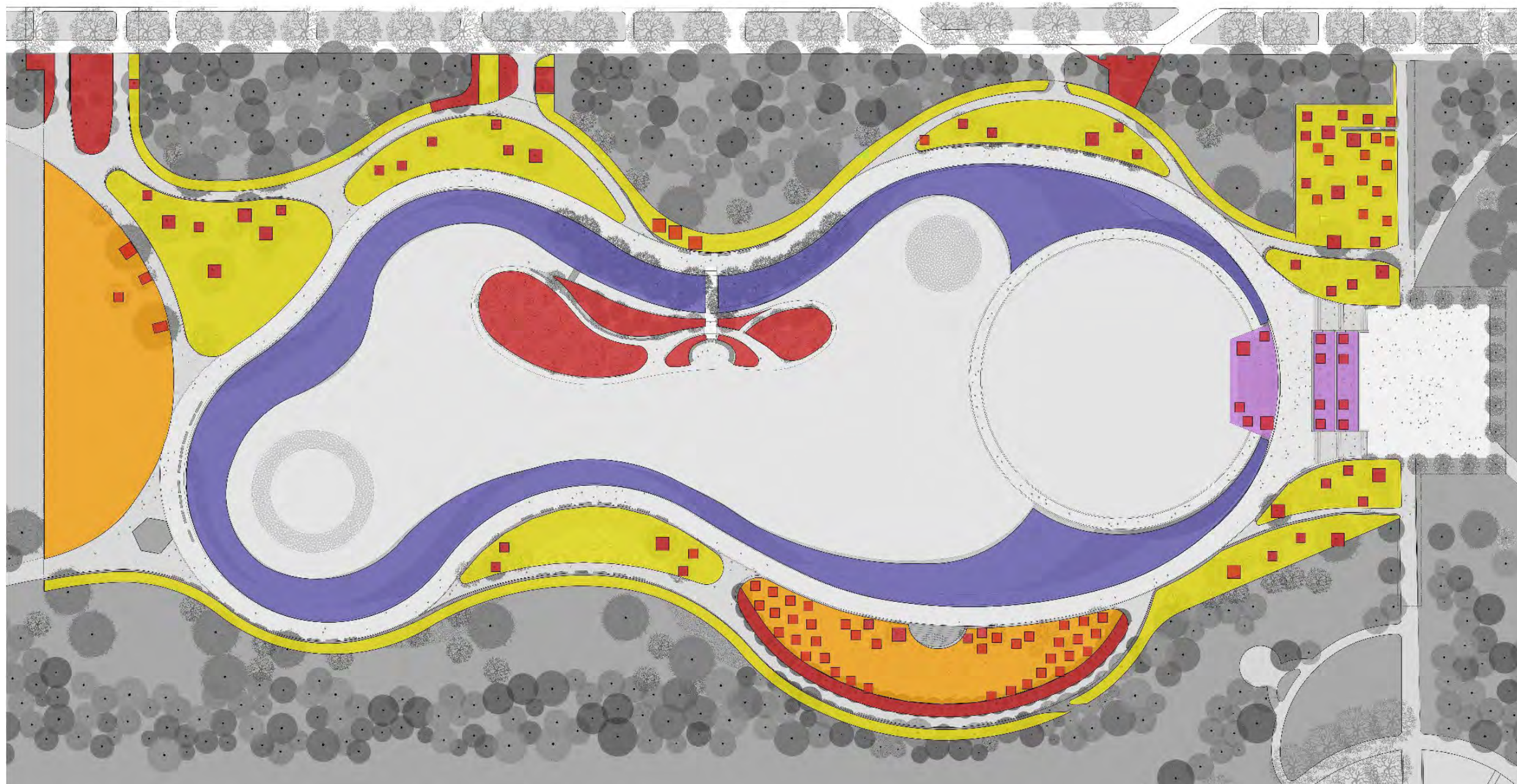


BUILDING A HEALTHY SITE THROUGH AN INTEGRATED DESIGN - FOCUSED ON BOTH LAND AND WATER

SOILS DRAINAGE PLANTING LAKE DEPTH AERATION BIOLOGICAL AND MECHANICAL FILTRATION



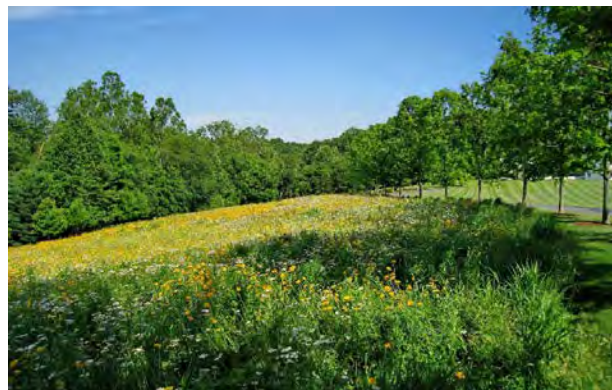
BUILDING A HEALTHY ECOLOGICAL GARDEN



- HIGH USE LAWN SOIL - 12" DEPTH
- PLANTING SOIL - 24" DEPTH
- PLANTING SOIL - 48" DEPTH
- WETLAND TERRACE PLANTING MEDIA
- STRUCTURAL SOIL



LAWN



MEADOW



COLOR GARDEN

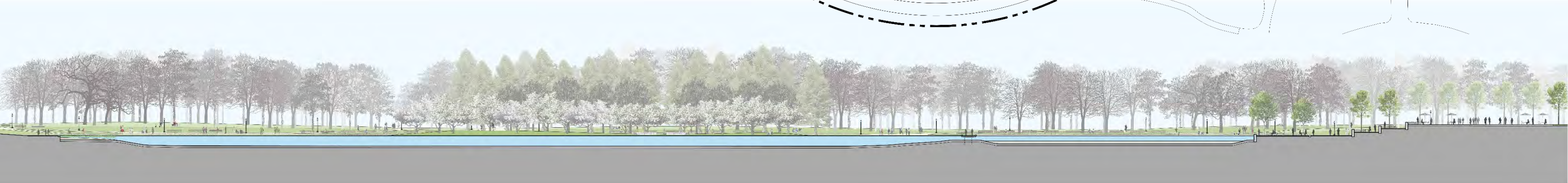
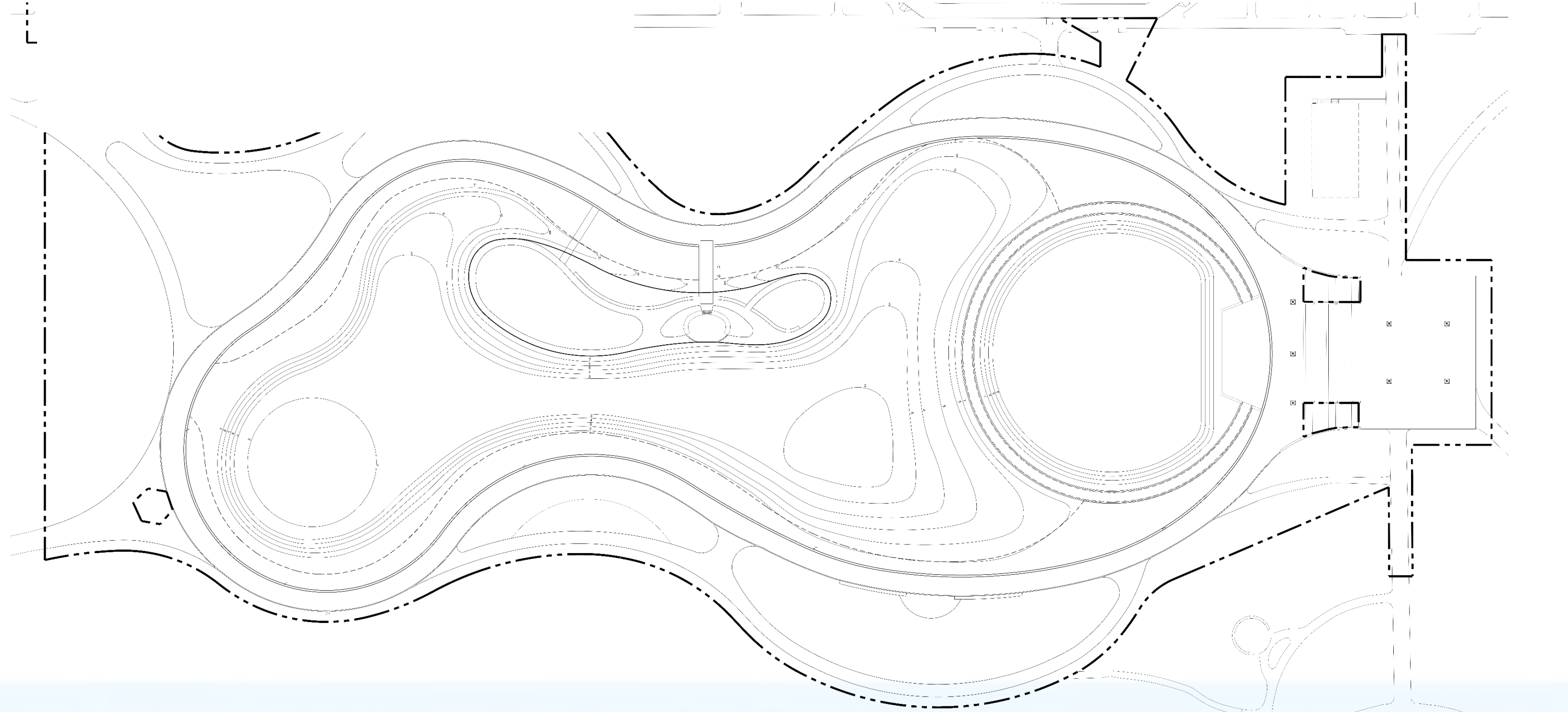


WOODLAND



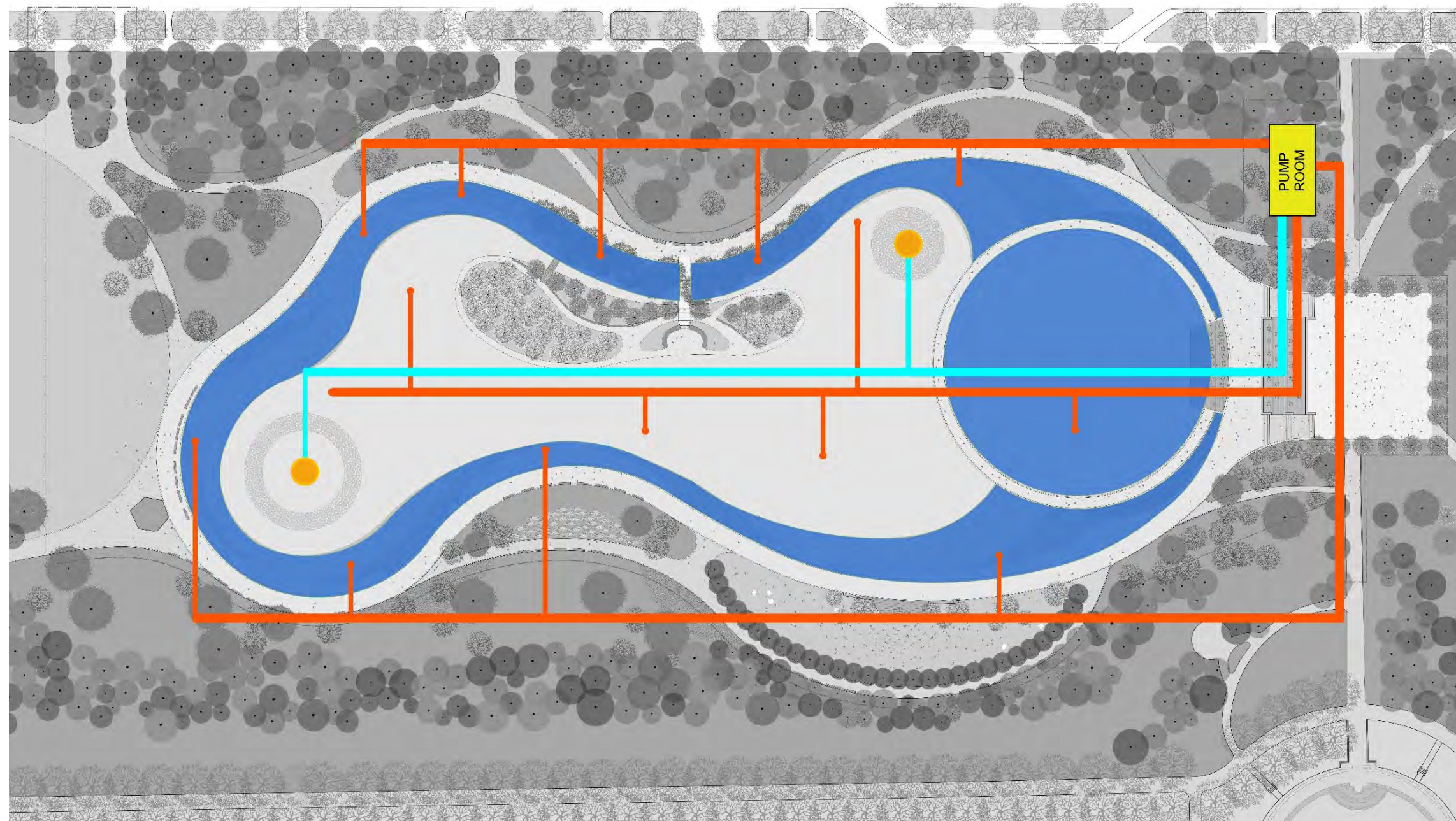
WETLAND EDGE





BUILDING A HEALTHY SITE - INCREASING LAKE DEPTH



BUILDING A HEALTHY ECOLOGICAL GARDEN

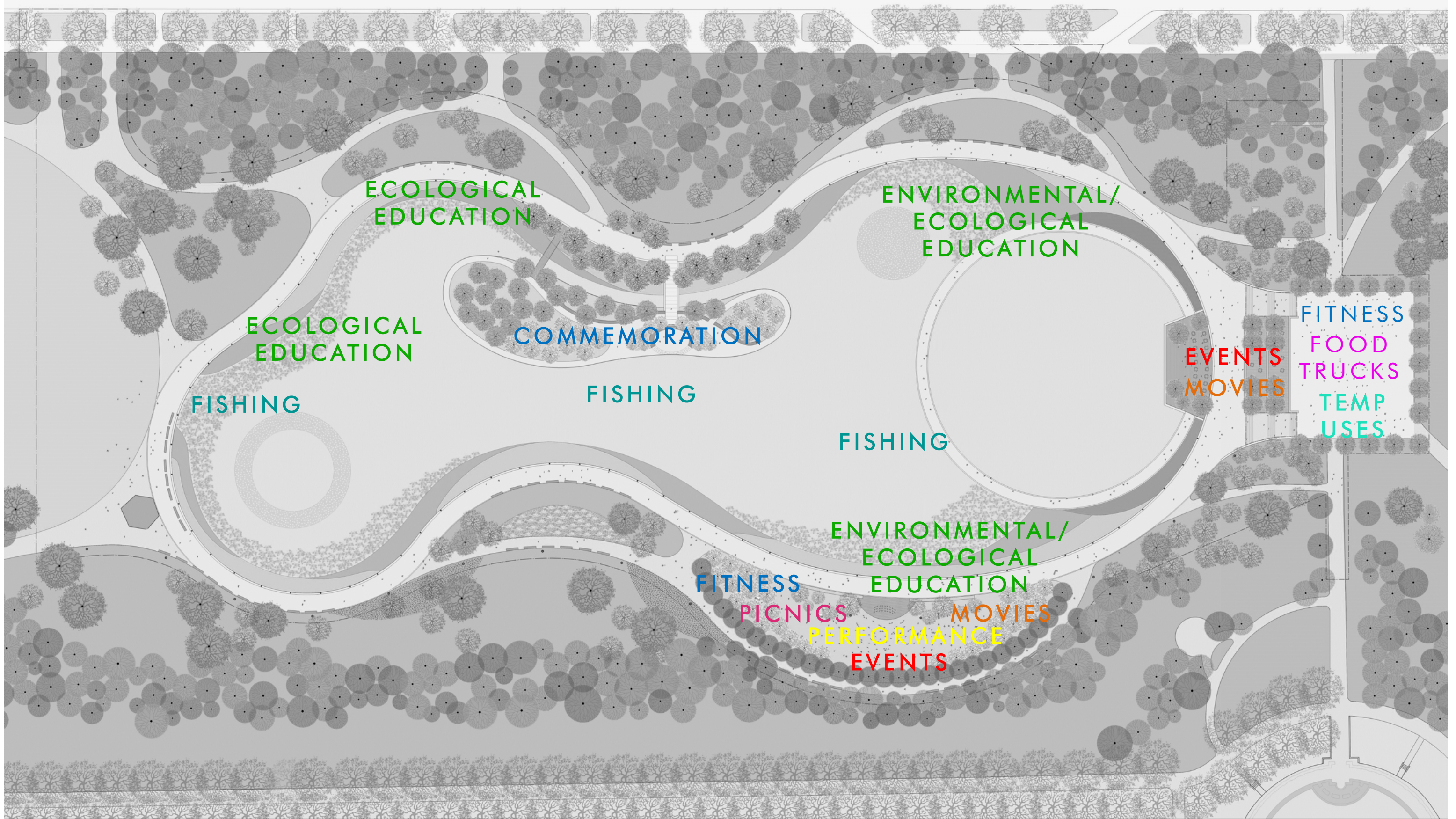
BUILDING A HEALTHY SITE - BIOLOGICAL AND MECHANICAL FILTRATION



-  LAKE BOTTOM SUCTION OUTLET
-  BIOFILTRATION ZONES
-  SUCTION PIPING TO MECHANICAL FILTERS AND PUMP
-  RETURN PIPING TO LAKE



CONSTITUTION GARDENS LAKE PROJECT



PROGRAM AND ACTIVATION ACROSS THE GARDEN

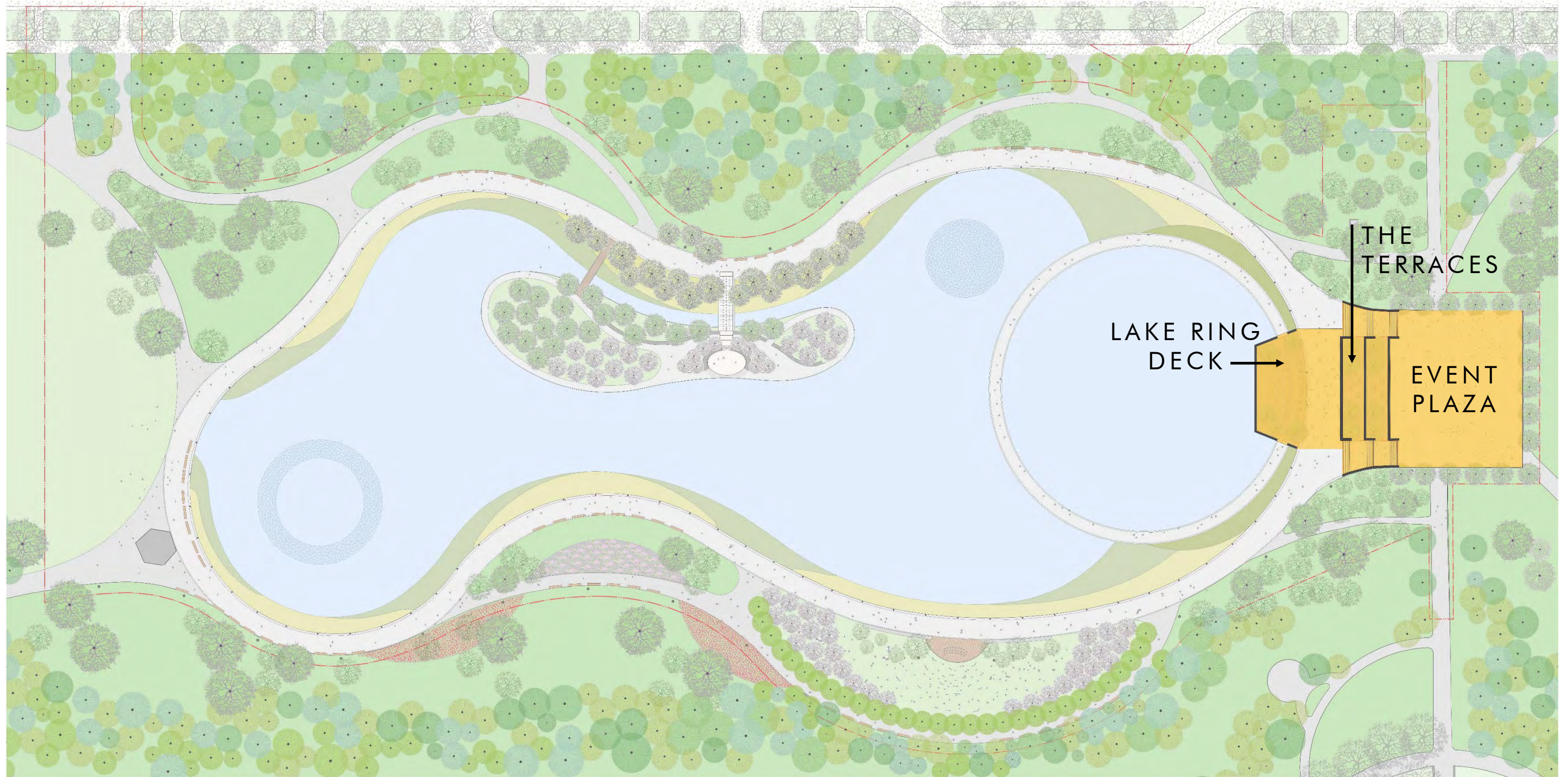


TABLE / TENT EVENTS

FOOD TRUCKS

INFORMAL MOVEABLE FURNITURE

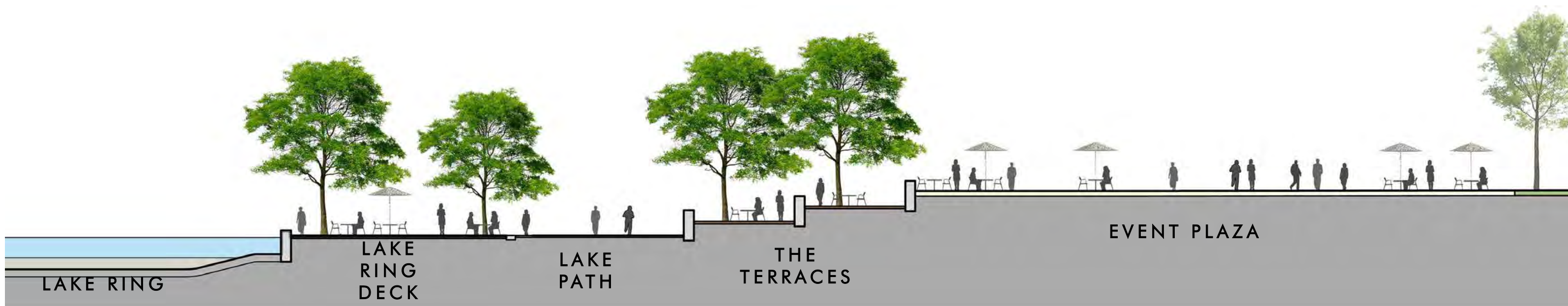
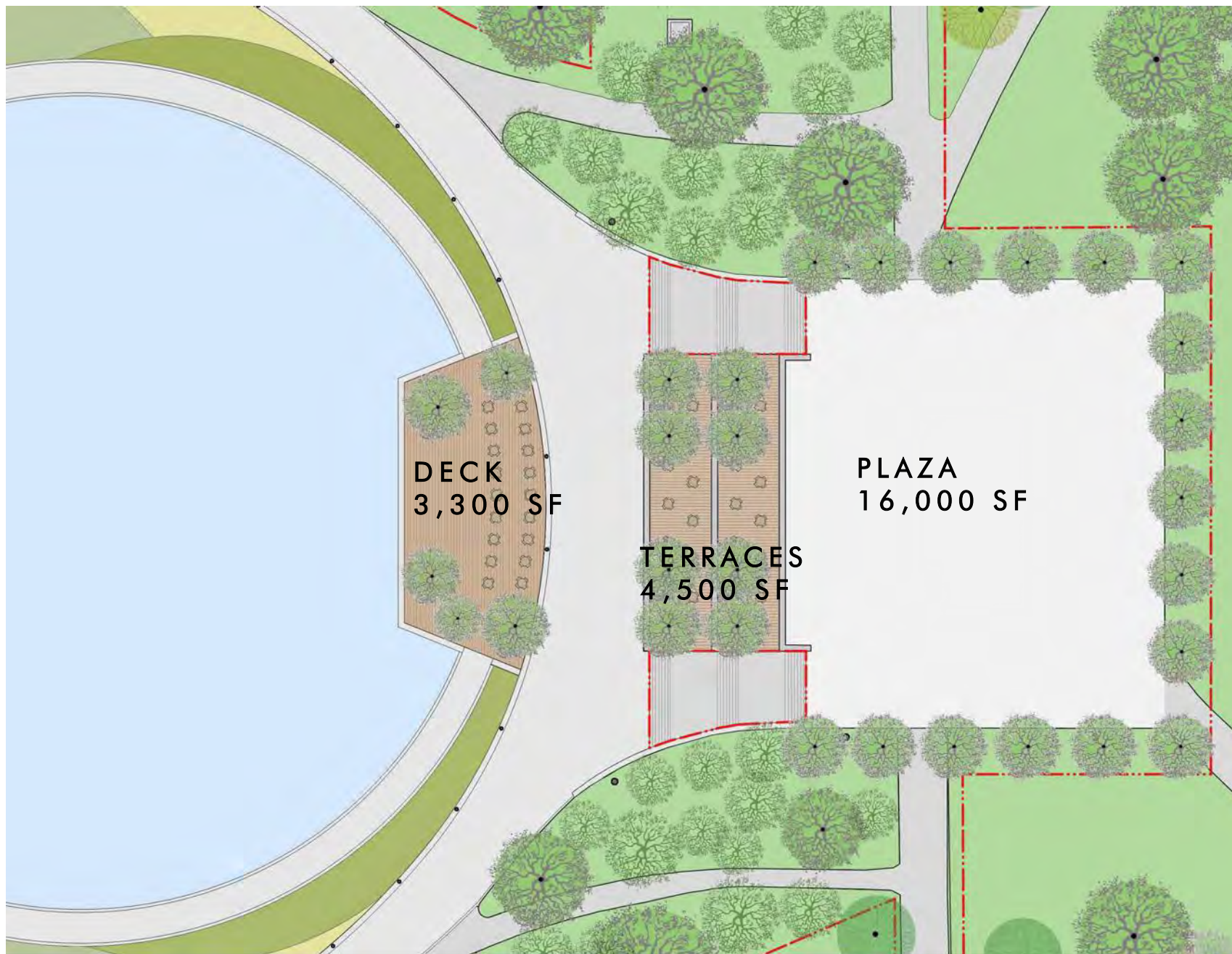
FORMAL SEATED EVENTS

TEMPORARY USES

PLAZA, TERRACES, AND LAKE RING DECK

EVENT PLAZA , TERRACES AND DECK

- FOOD TRUCKS
- TENTED EVENTS
- MOVABLE OR FIXED FURNITURE
- BEER GARDEN / PICNIC TABLES
- POWER AND WATER CONNECTIONS
- MOVIES
- FITNESS CLASSES
- TEMPORARY USES
- ART INSTALLATIONS



EVENT PLAZA , TERRACES , AND THE LAKE RING DECK



EXISTING TERRACES AND PLAZA



EXISTING TERRACES AND PLAZA



HAMMOCKS AND SEATING INSTALLATIONS



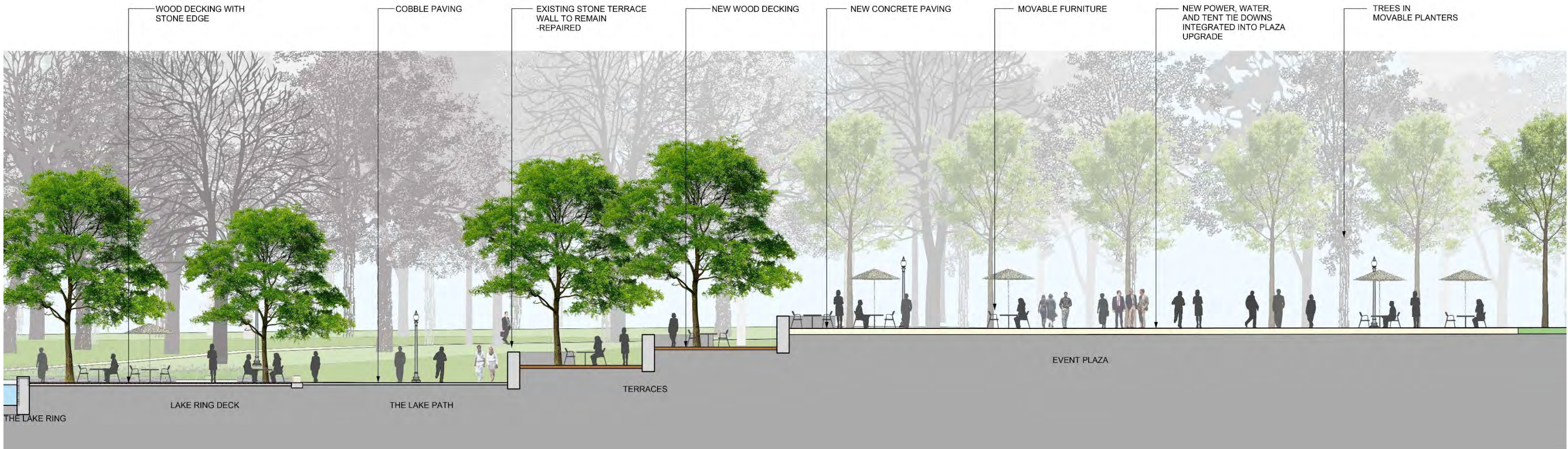
BEER GARDEN SEATING



MOVABLE FURNISHINGS



FOOD TRUCKS



EVENT PLAZA, TERRACES, AND THE LAKE RING DECK



EVENT PLAZA AND TERRACES | TEMPORARY ART AND ACTIVITIES



EVENT PLAZA, TERRACES, AND THE LAKE RING DECK



EVENT PLAZA, TERRACES, AND THE LAKE RING DECK



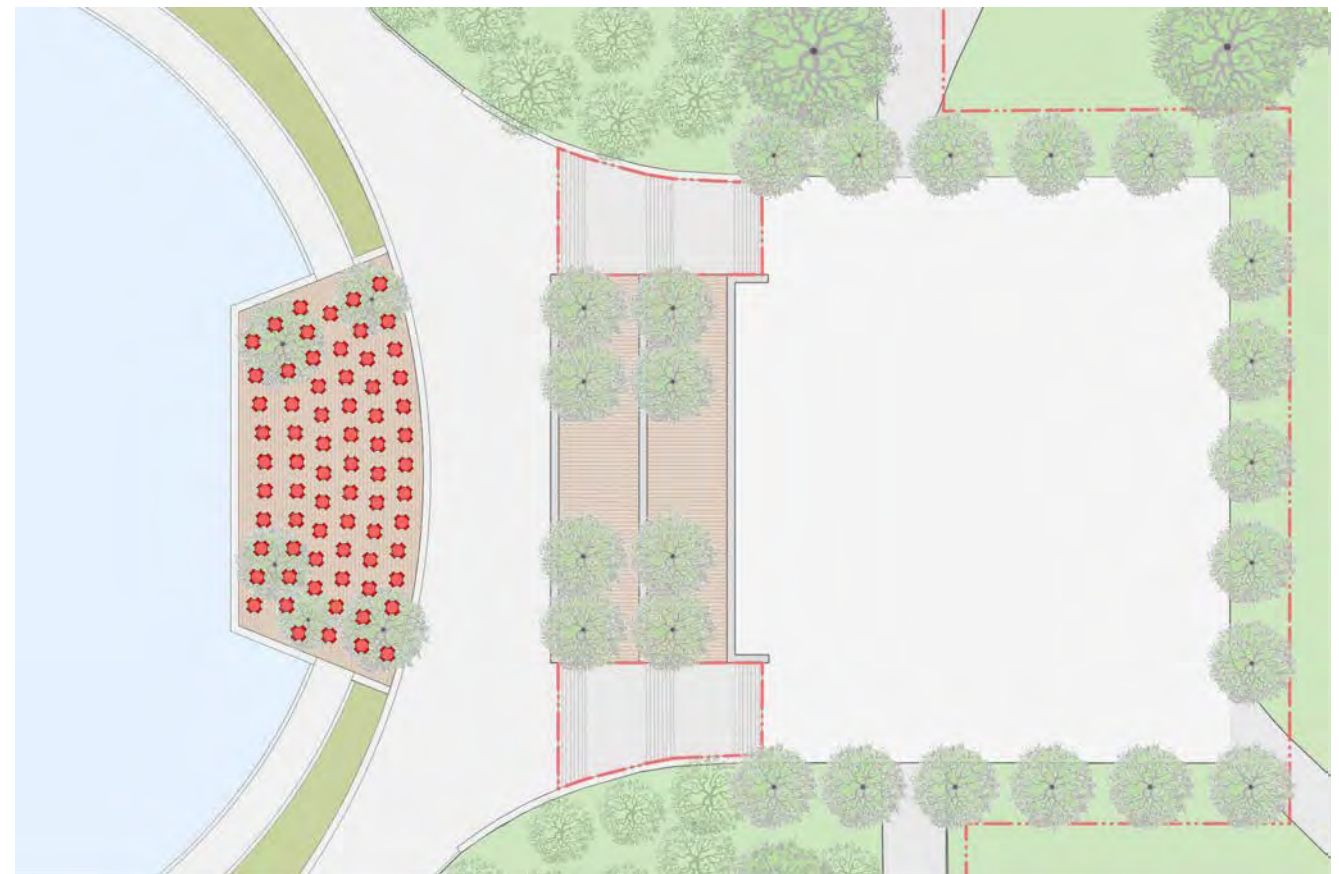
EVENT PLAZA, TERRACES, AND THE LAKE RING DECK



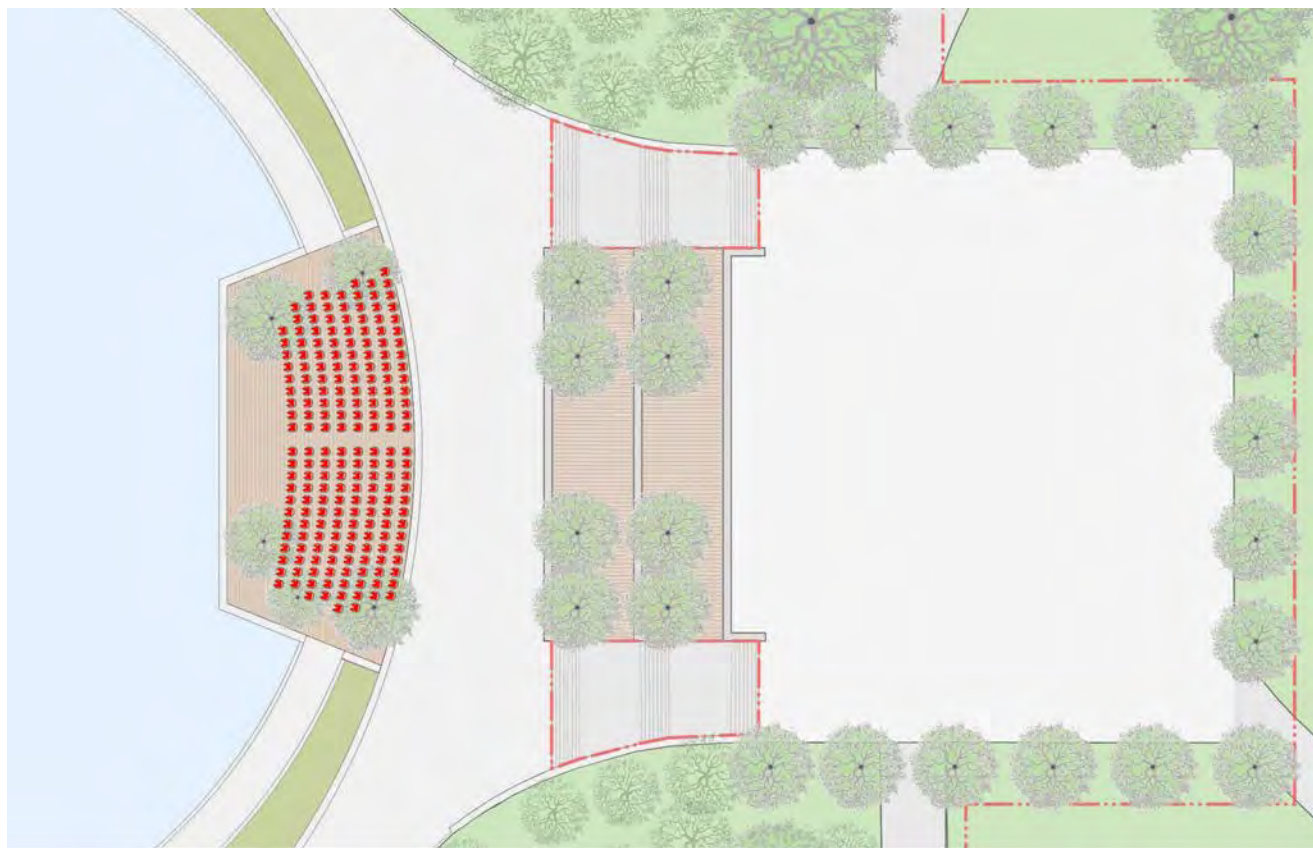
EVENT PLAZA | MOVABLE FURNITURE AND F&B OPPORTUNITIES



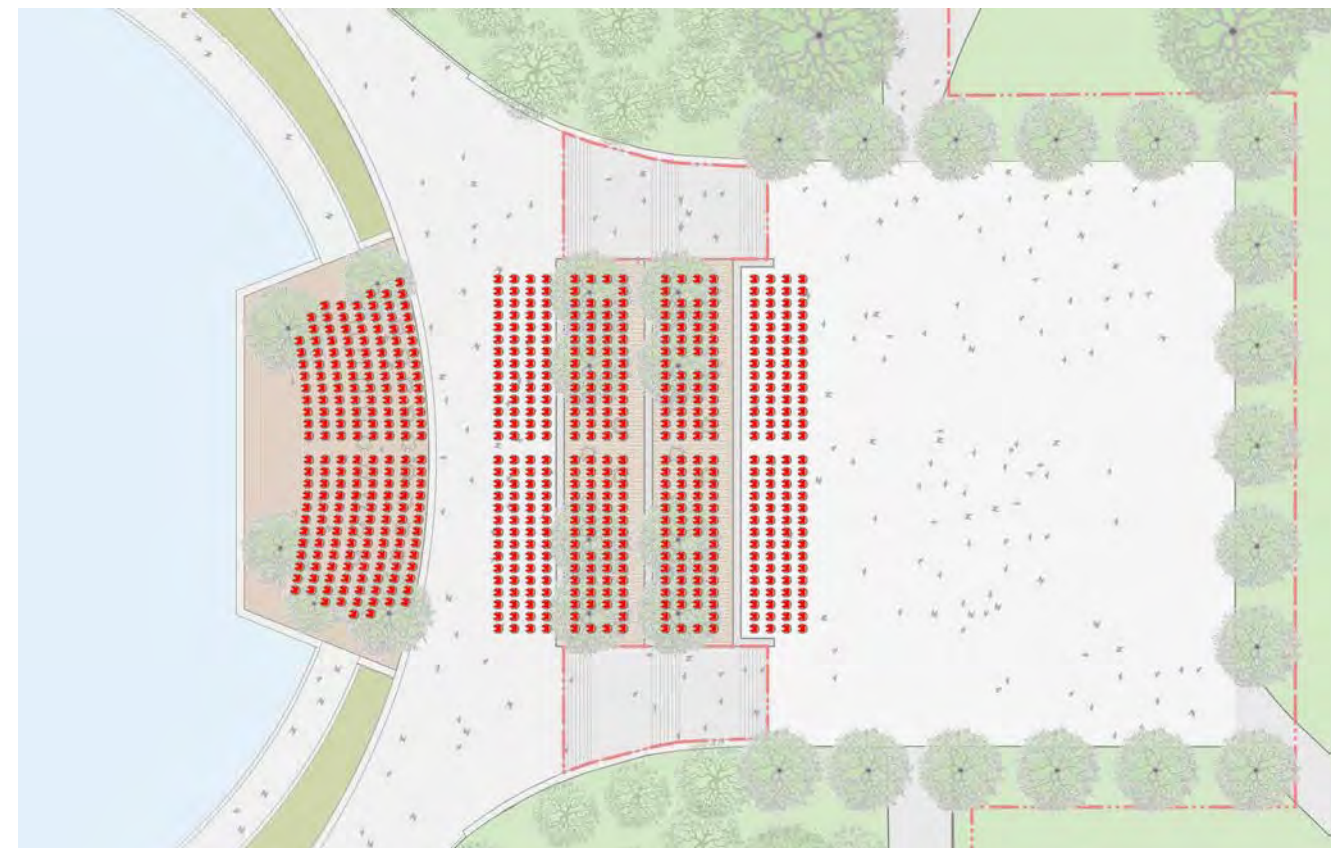
DECK CAPACITY - STANDING / WALKING : 500 PEOPLE



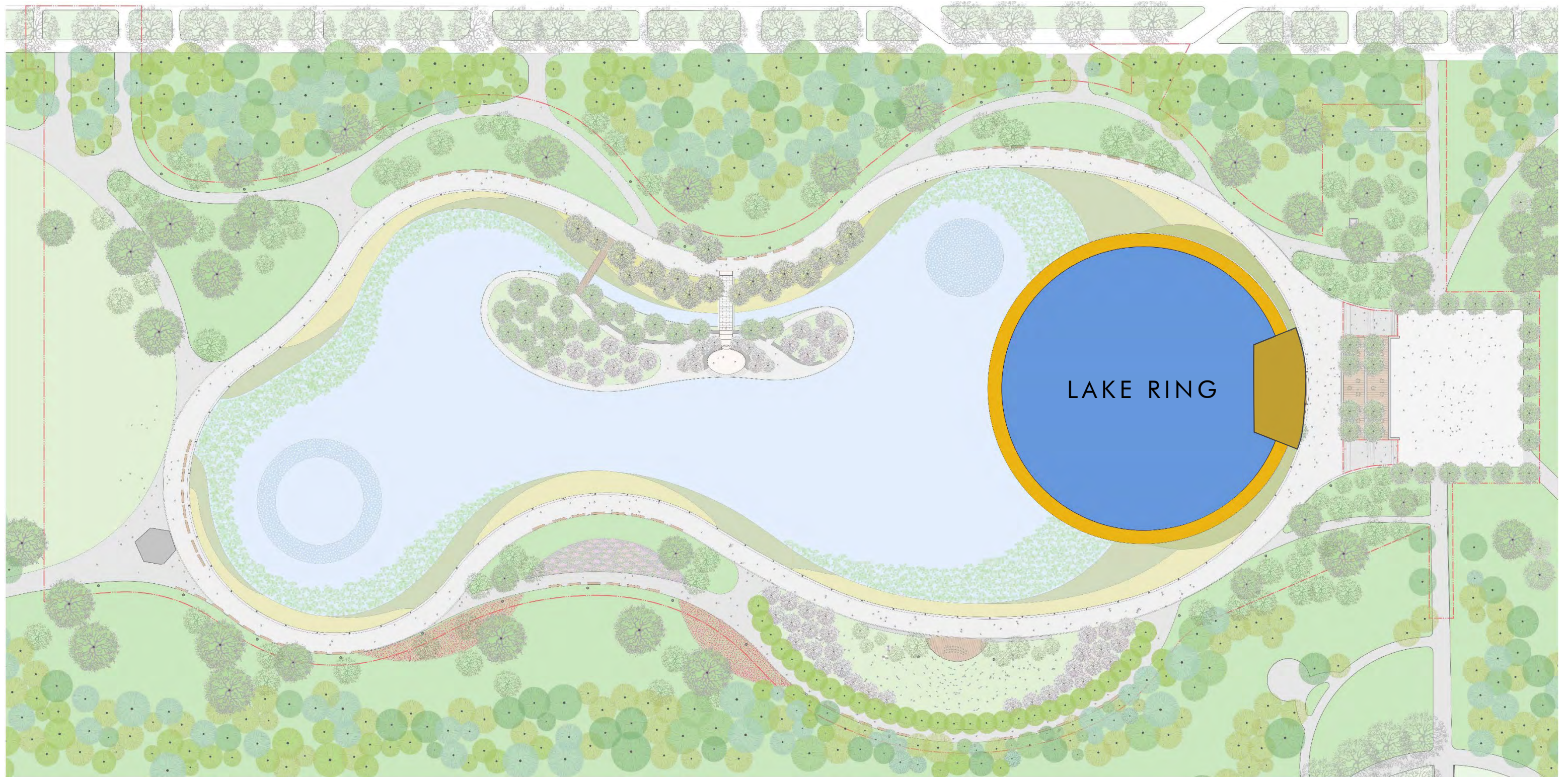
DECK CAPACITY - TABLE SEATING: 280 PEOPLE



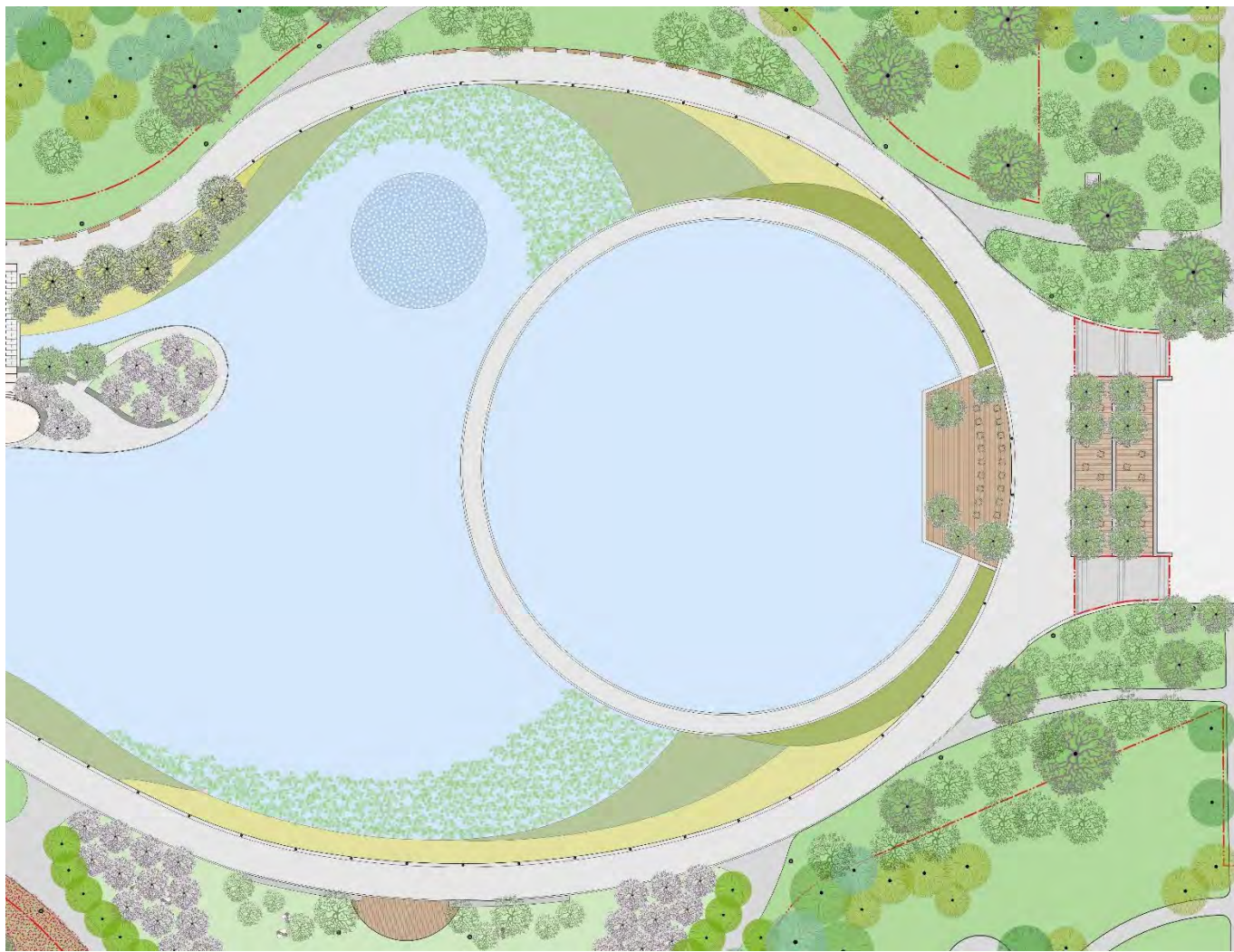
DECK - FORMAL SEATING: 200 PEOPLE



DECK AND TERRACES CAPACITY- FORMAL SEATING: 650 PEOPLE



LAKE RING



THE LAKE RING





ENVIRONMENTAL / ECOLOGICAL EDUCATION

- PARTNER WITH SCHOOLS AND ECOLOGICAL ORGS
- INTERPERTATIONAL PROGRAM WITH SIGNAGE OR QR CODES
- SELF GUIDED TOURS
- CITIZEN SCIENCE SPECIES COUNTS AND ID







GRANITE STONE – MEDIUM GRAY



WOOD DECKING WITH WOOD CURBS



GRANITE STONE – CHARCOAL

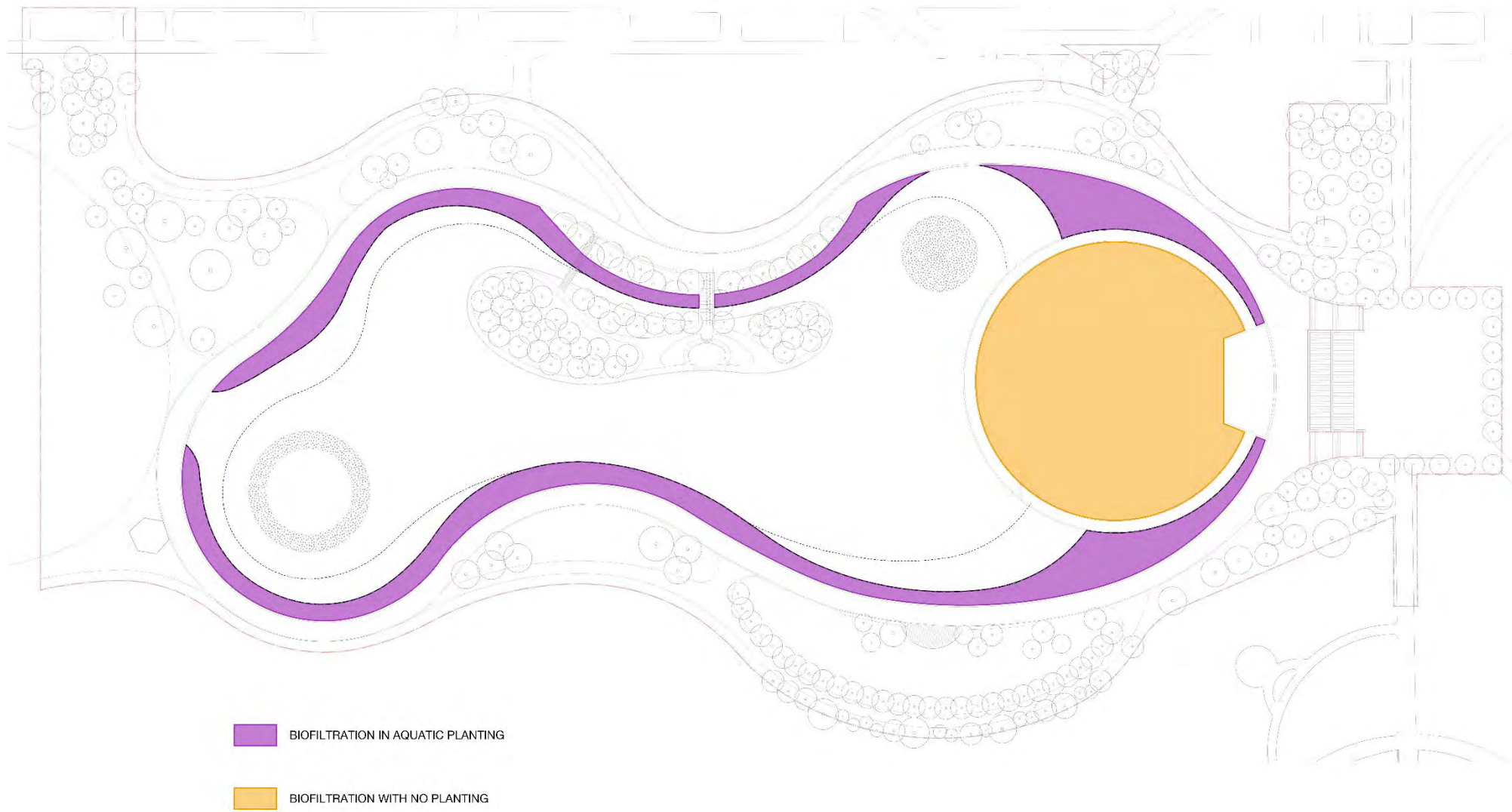


WOOD DECKING WITH GRANITE CURBS

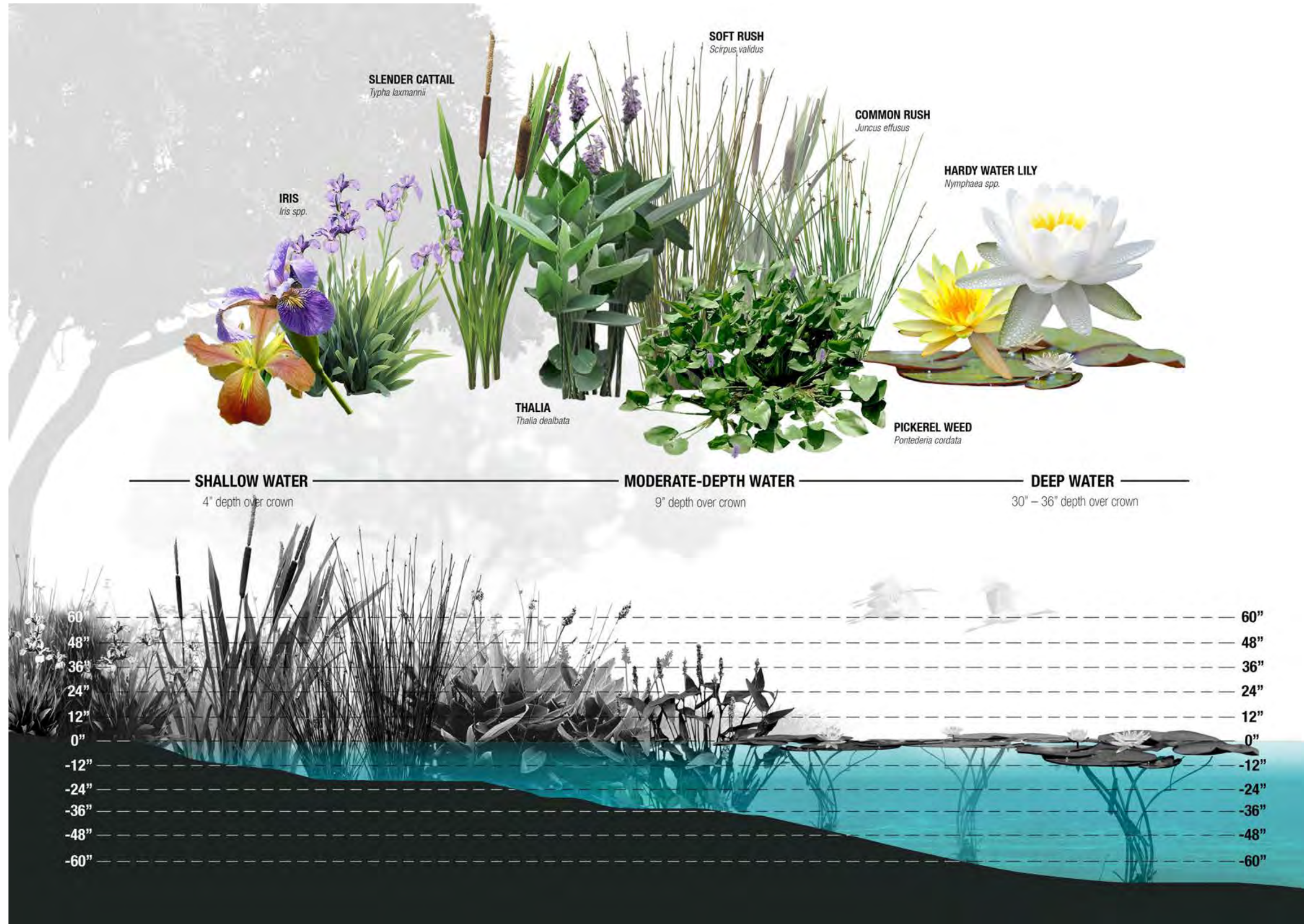
THE LAKE RING - MATERIALITY RELATED TO EFFECT AND MAINTENANCE



THE LAKE RING - MATERIALITY RELATED TO EFFECT AND MAINTENANCE



PLANTING LAYOUT IS BASED ON LANDSCAPE PERFORMANCE AND AESTHETICS

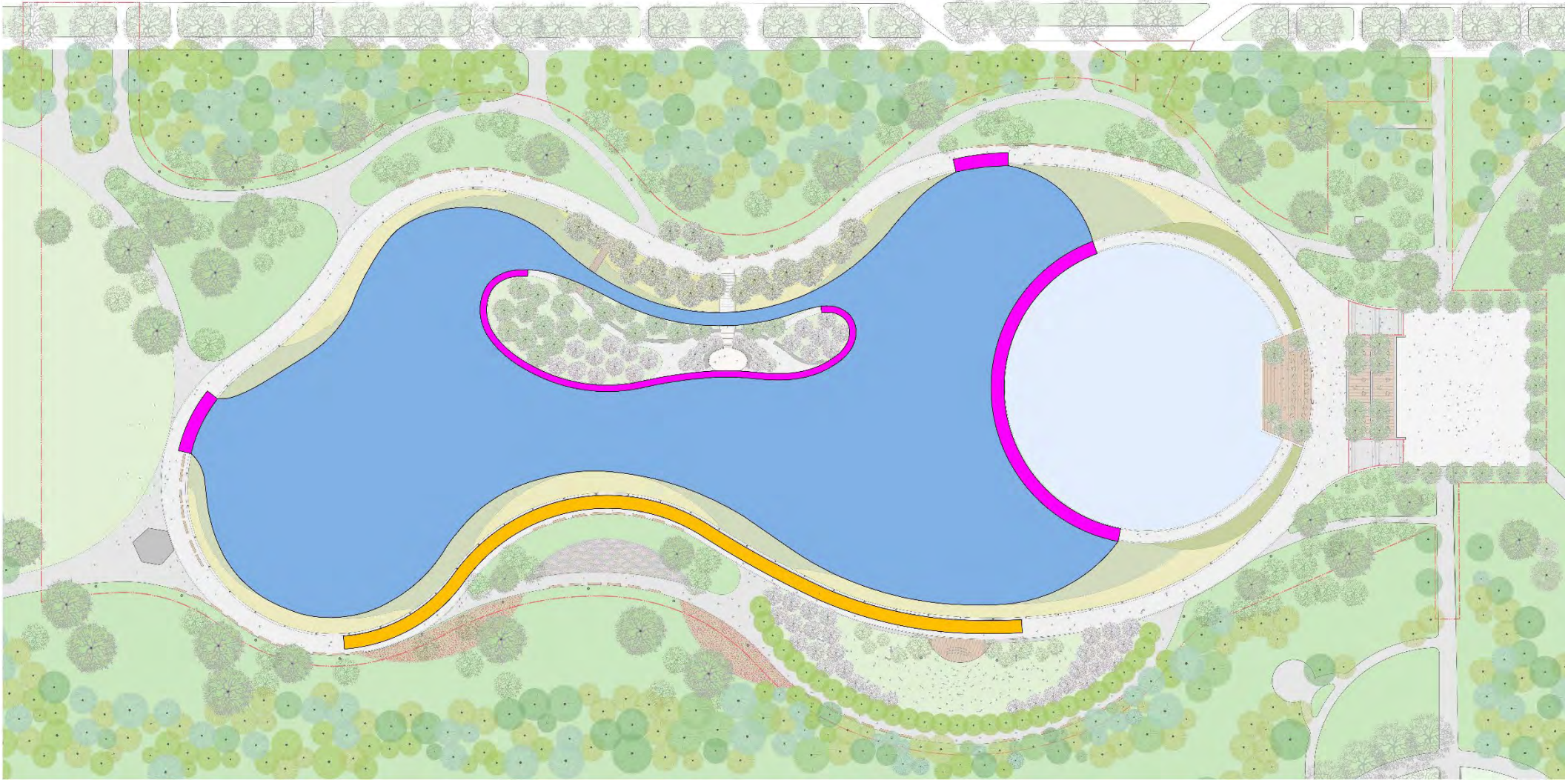


UNDER-WATER PLANTING BED ELEVATIONS GUIDE THE COMPOSITION
SOME SPECIES ARE CONFINED, WHILE OTHERS CAN SHIFT



THE BIOFILTRATION WETLANDS PRECEDENT AT GLENSTONE, POTOMAC, MD





■ FISHING OVER PLANTED AREAS

■ LAKE EDGE FISHING AREAS

FISHING

- RECREATIONAL FISHING OPEN TO THE PUBLIC
- POSSIBLE NATIONAL FISHING DAY WITH NPS





CONCERT / PERFORMANCE

LECTURE / TOUR TALK

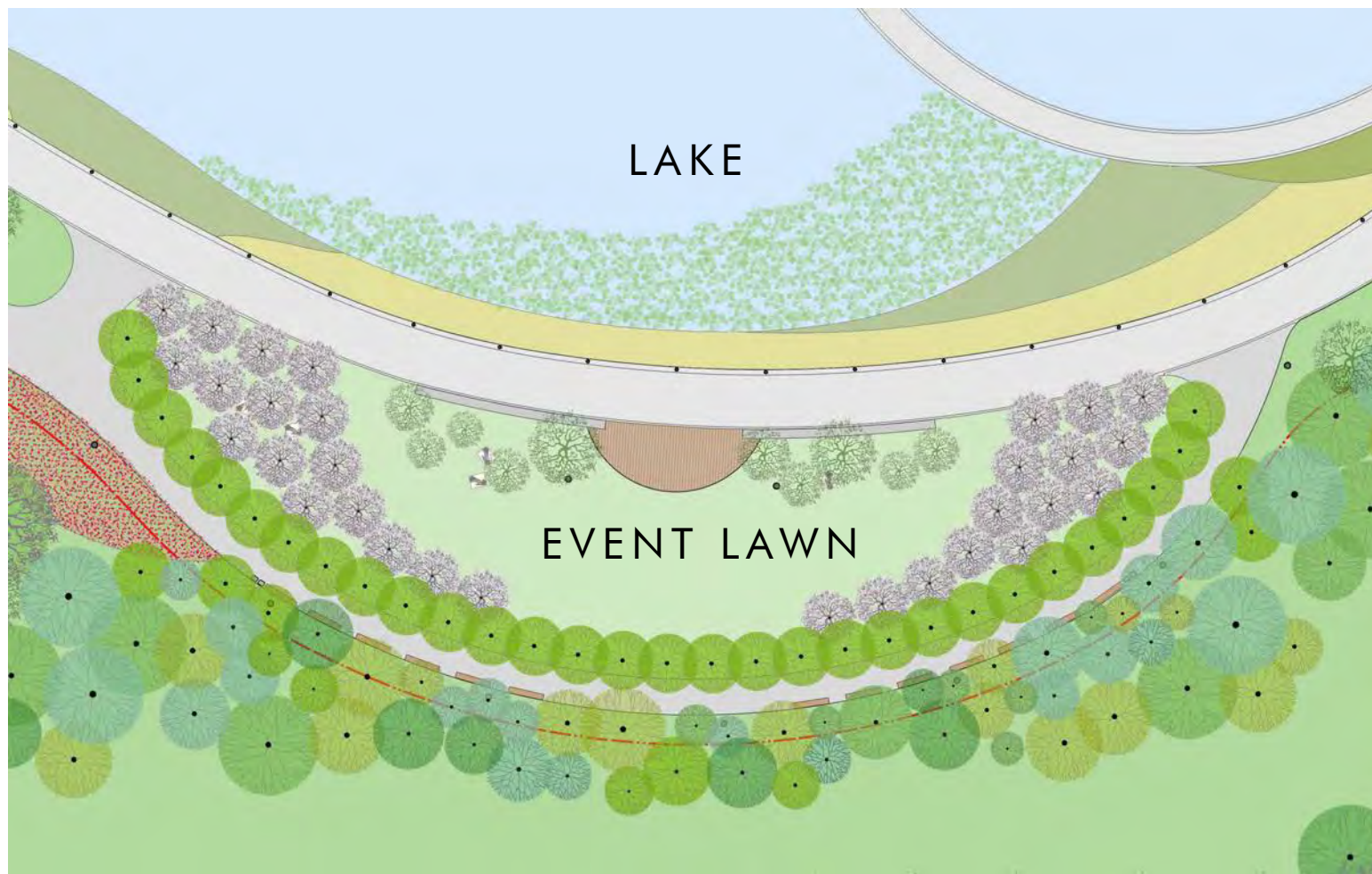
MOVIE SCREENING

PICNICS

FITNESS

SCHOOL GROUPS

THE EVENT LAWN | FLEXIBLE, MULTI-PURPOSE LAWN



EVENT LAWN

- FLEXIBLE GATHERING SPACE OVERLOOKING THE LAKE
- STAGE FOR SMALLER OR LARGER EVENTS
- CONCERT / PERFORMANCE
- LECTURE / TOUR TALK
- MOVIE SCREENINGS
- PICNICS AND INFORMAL GATHERINGS
- LIGHTING & POWER CONNECTIONS



THE EVENT LAWN | FLEXIBLE, MULTI-PURPOSE LAWN



1 EVENT LAWN ELEVATION
SCALE: 3/16"=1'

SECTION

THE EVENT LAWN | FLEXIBLE, MULTI-PURPOSE LAWN



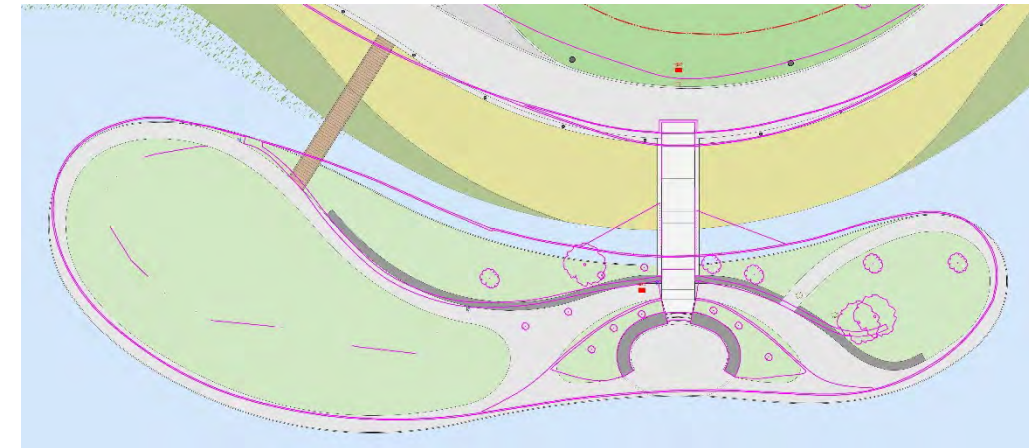
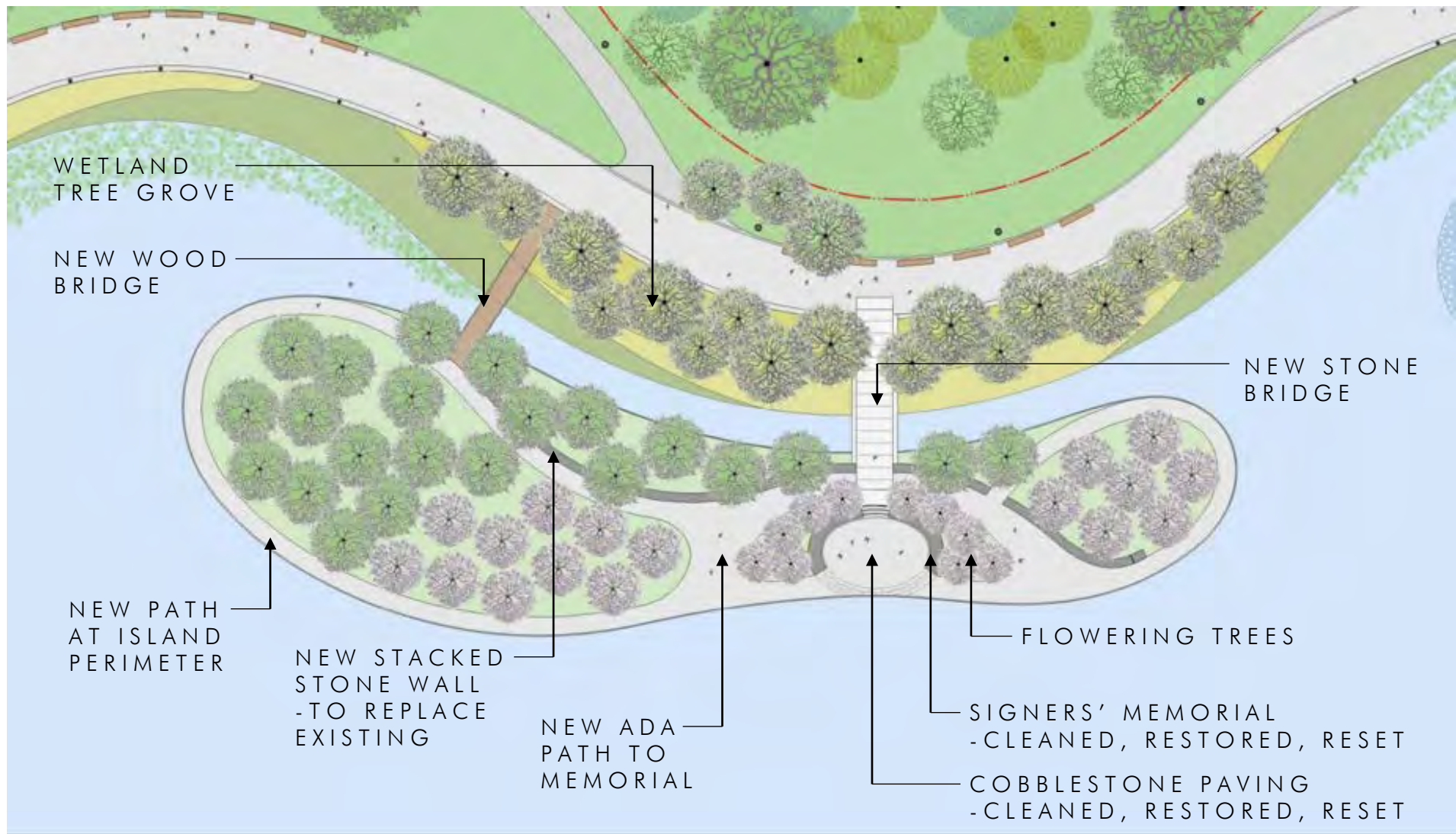
THE EVENT LAWN | FLEXIBLE, MULTI-PURPOSE LAWN



THE EVENT LAWN | FLEXIBLE, MULTI-PURPOSE LAWN



SIGNERS' ISLAND



EXISTING ISLAND OVERLAY ON NEW PLAN



EXISTING EDGE



EXISTING, NON-ADA COMPLIANT BRIDGE



SIGNERS' MEMORIAL AND STEPS



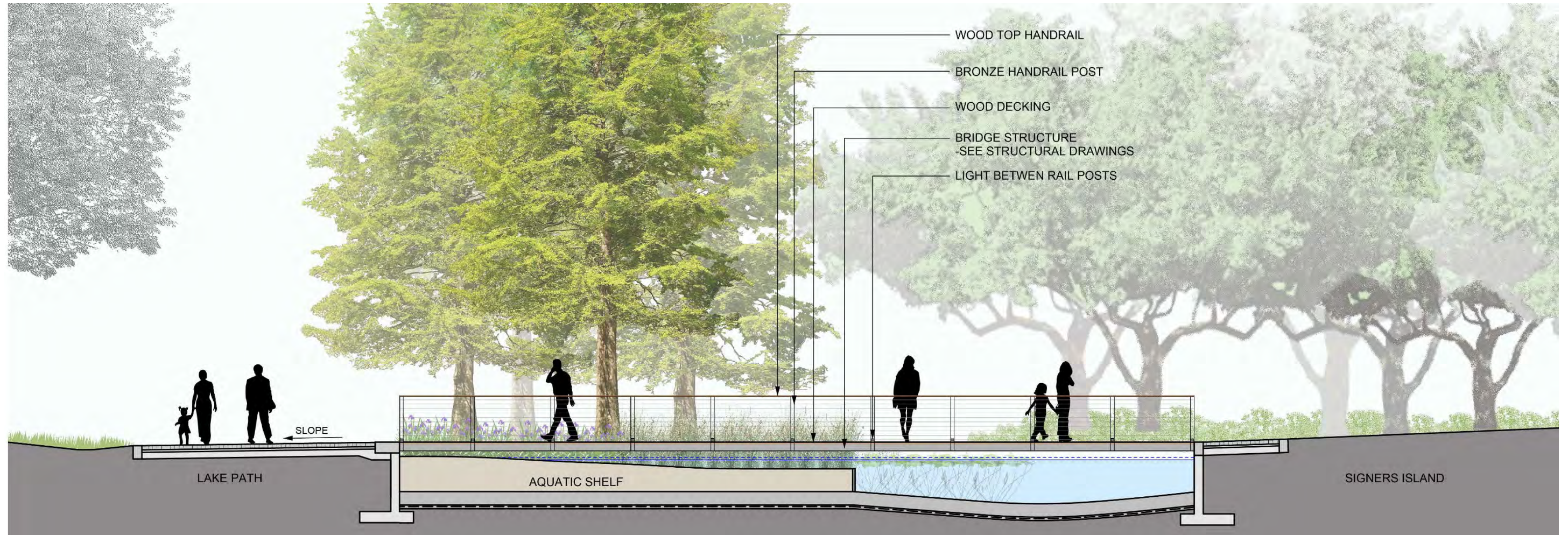
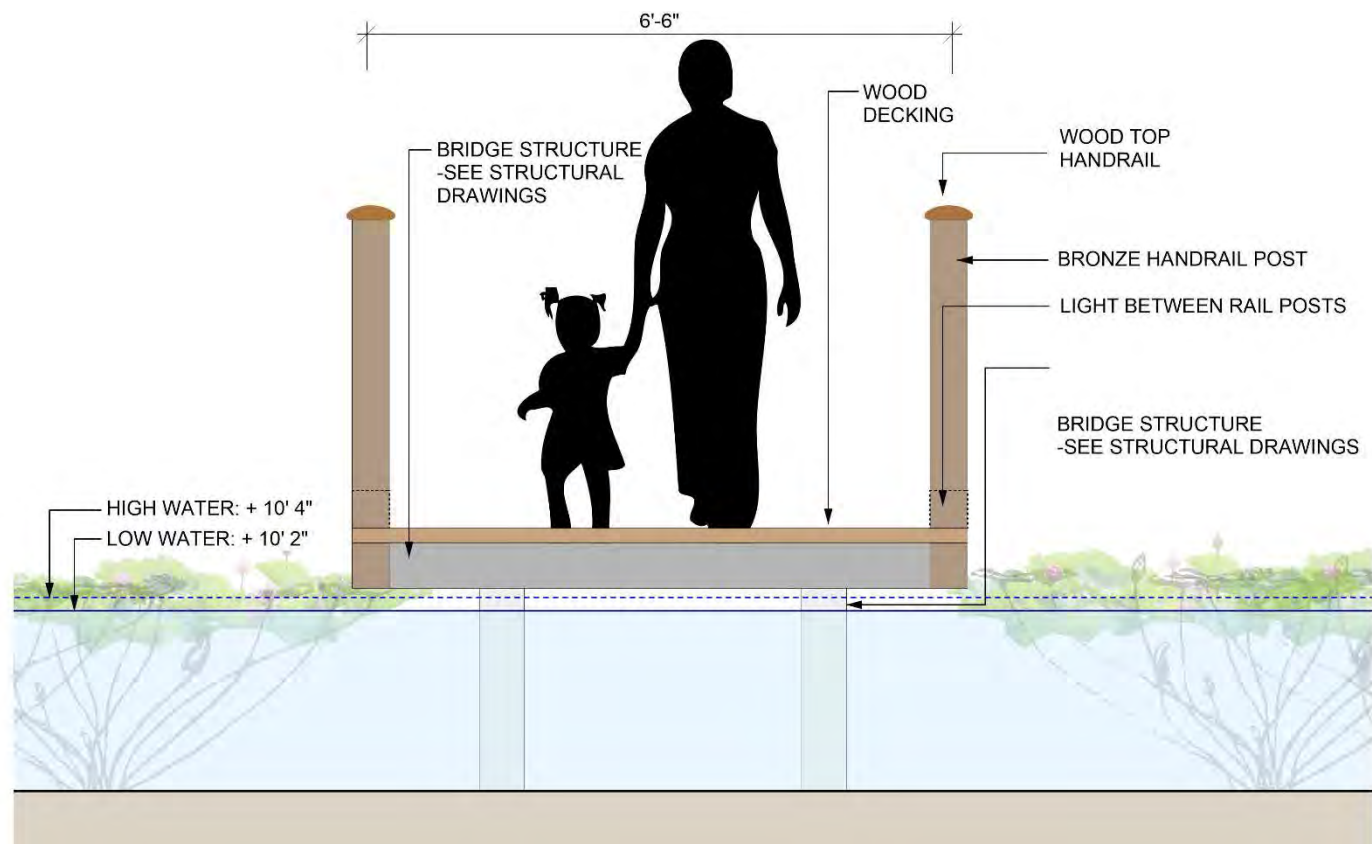
SIGNERS' MEMORIAL STONE SLABS - TO REMAIN

SIGNERS' ISLAND



A MEMORIAL TO THE 56 SIGNERS OF
THE DECLARATION OF INDEPENDENCE
A GIFT FROM
THE AMERICAN REVOLUTION
BICENTENNIAL ADMINISTRATION
1976

STONE BRIDGE TO SIGNERS' ISLAND AND 56 SIGNERS' MEMORIAL



WOOD BRIDGE TO SIGNERS' ISLAND



WOOD BRIDGE TO SIGNERS' ISLAND



AERATION RING

AERATION CIRCLE





CONSTITUTION AVENUE NW

VIETNAM VETERANS
MEMORIAL

LINCOLN MEMORIAL REFLECTING POOL

WWII
MEMORIAL

17TH STREET NW

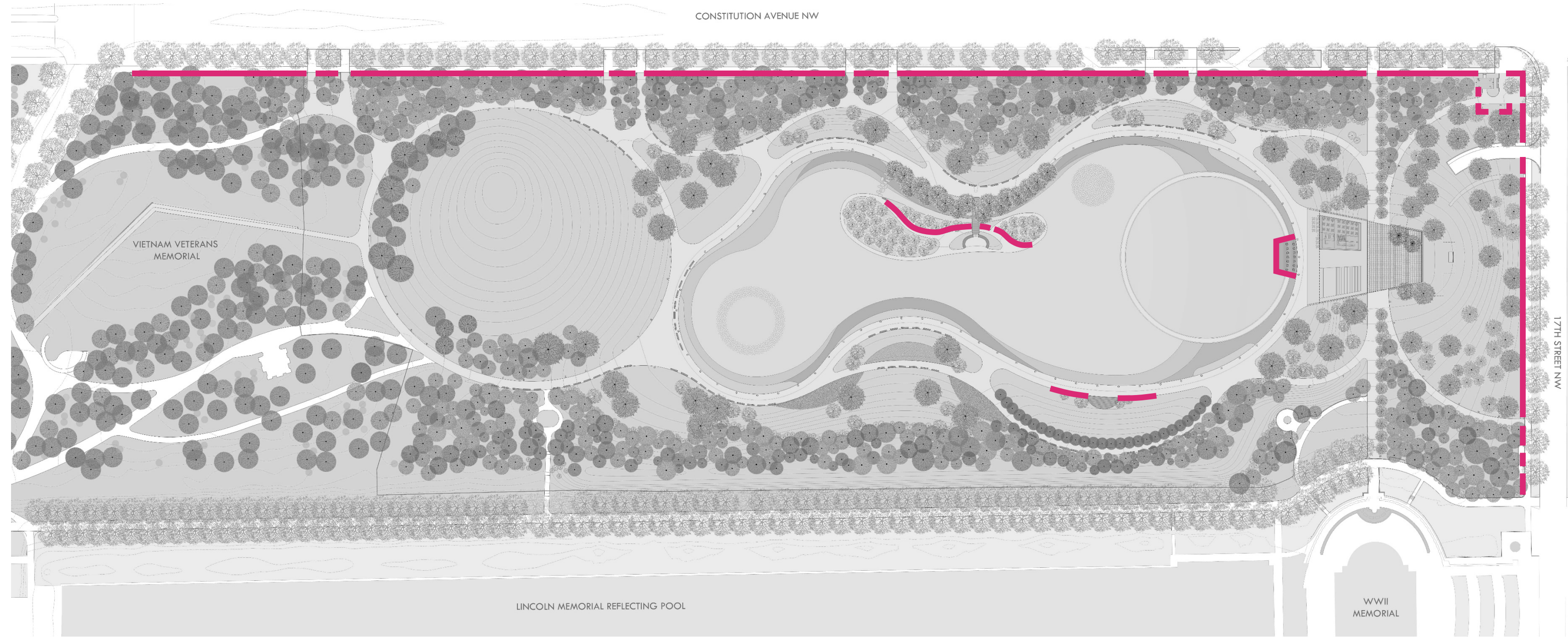
CONSTITUTION AVENUE NW

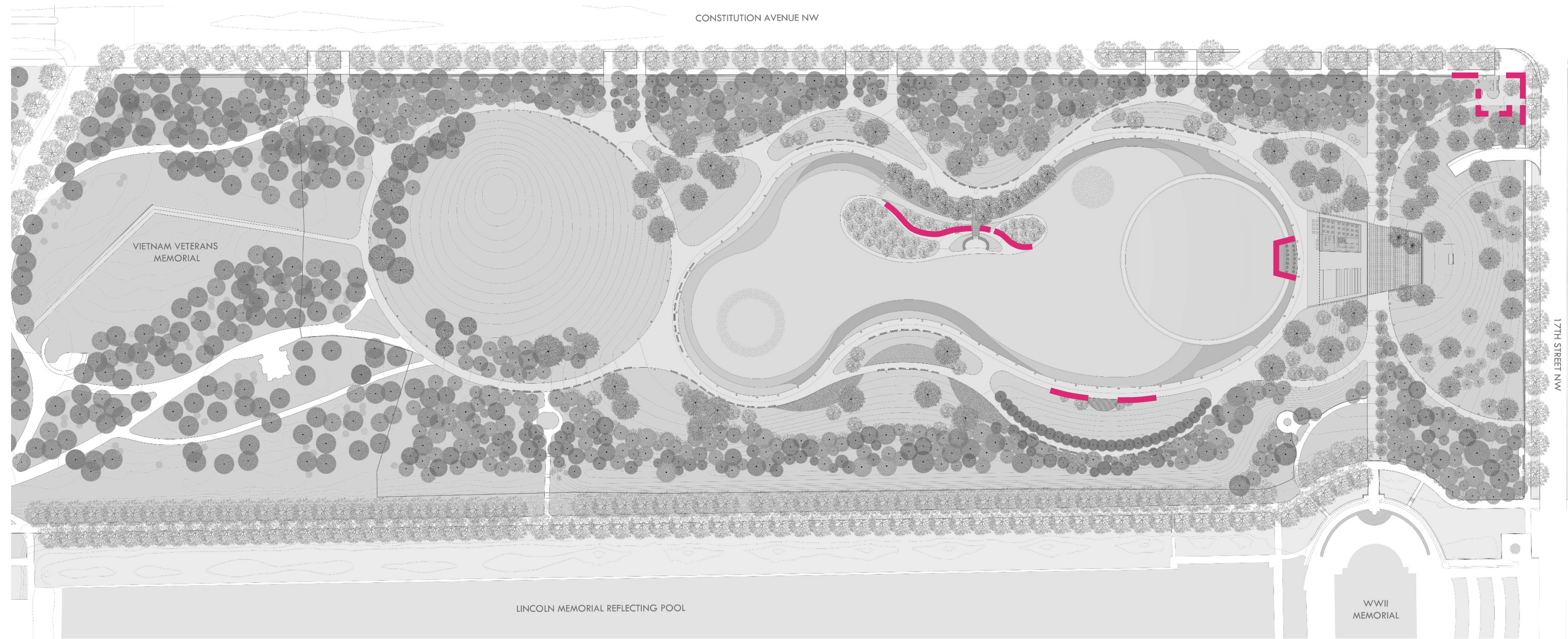
VIETNAM VETERANS
MEMORIAL

LINCOLN MEMORIAL REFLECTING POOL

WWII
MEMORIAL

17TH STREET NW





CONSTITUTION AVENUE NW

VIETNAM VETERANS
MEMORIAL

LINCOLN MEMORIAL REFLECTING POOL

WWII
MEMORIAL

17TH STREET NW



PHASE 1 LOCKKEEPER'S HOUSE SITE WALL



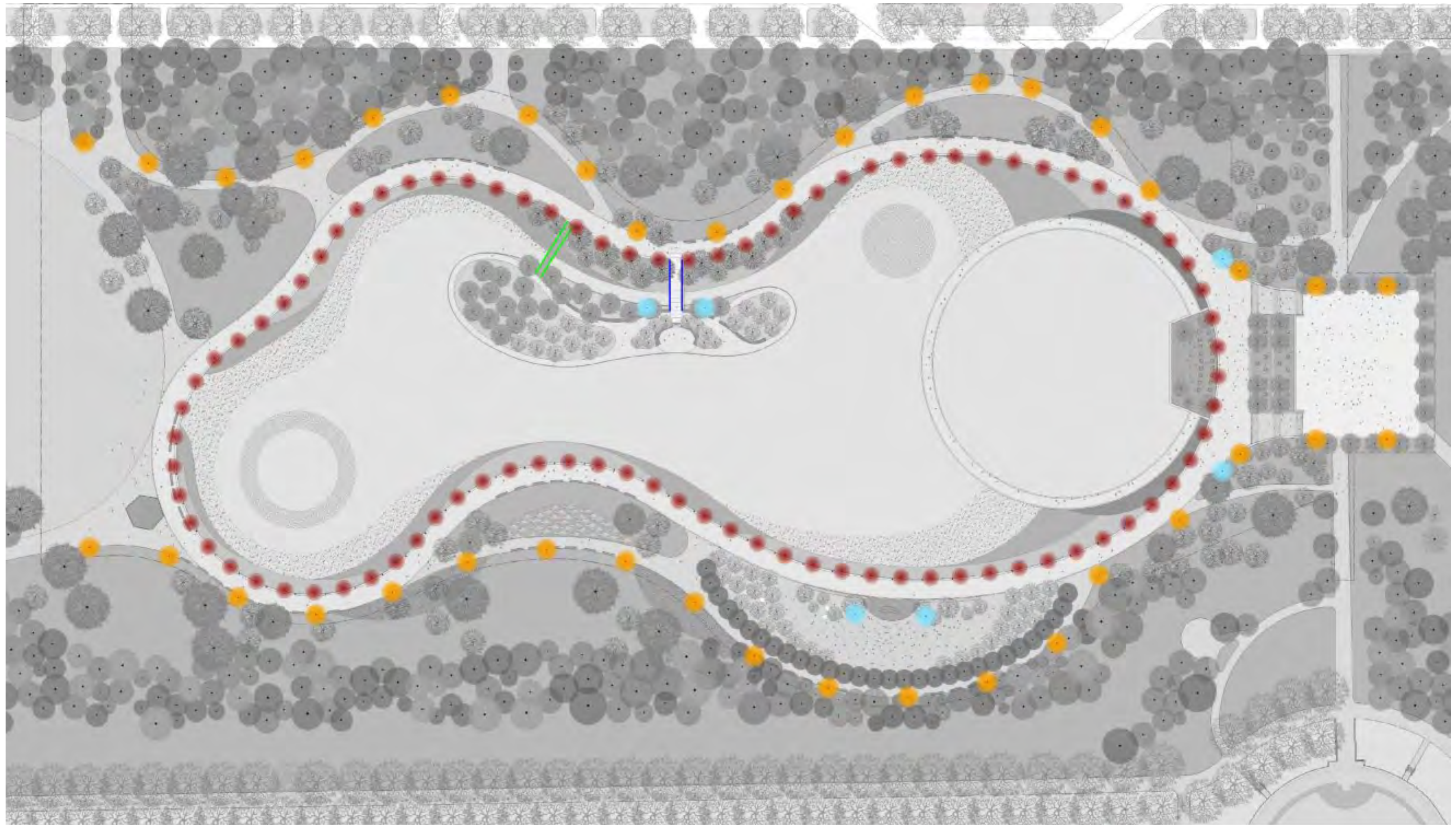
17TH ST LEVEE WALL



SIGNERS ISLAND SITE WALL



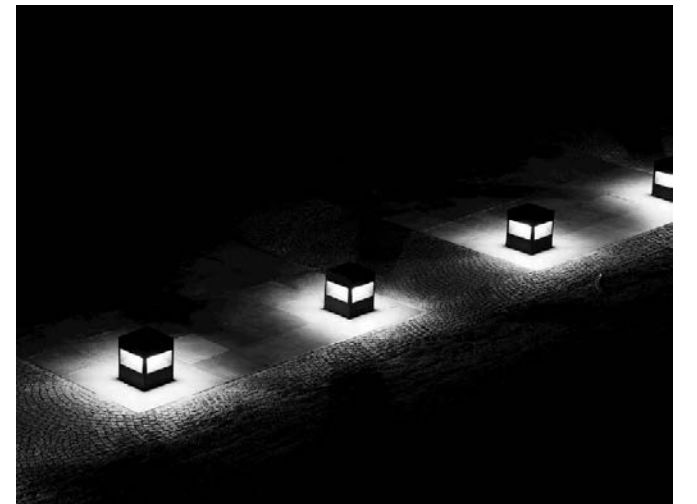
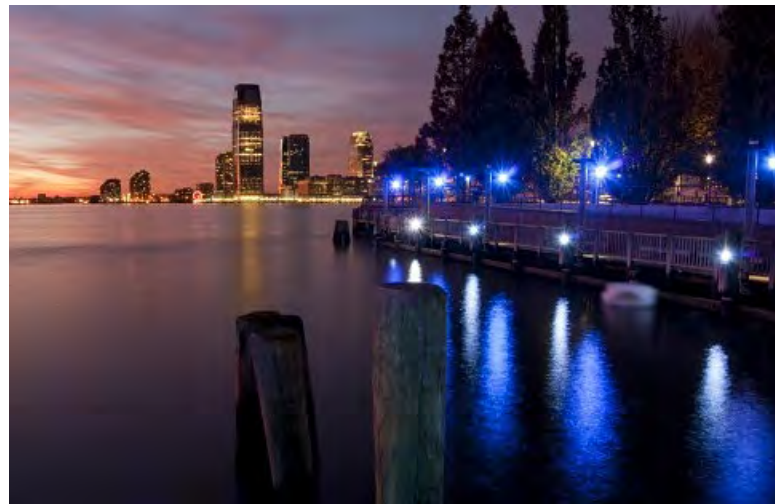
TERRACE WALLS



- | | |
|---|--|
|  L-1 LED COVE FIXTURE |  L-3 LAKE EDGE FIXTURE |
|  L-2 BRIDGE ACCENT LIGHT |  L-4 MAST LIGHTING |
| |  L-5 WASHINGTON GLOBE FIXTURE |



LOW PROFILE LIGHTING ELEMENT SET IN LAKE EDGE STONE, APPROX. 14" TALL, 14" DIAMETER



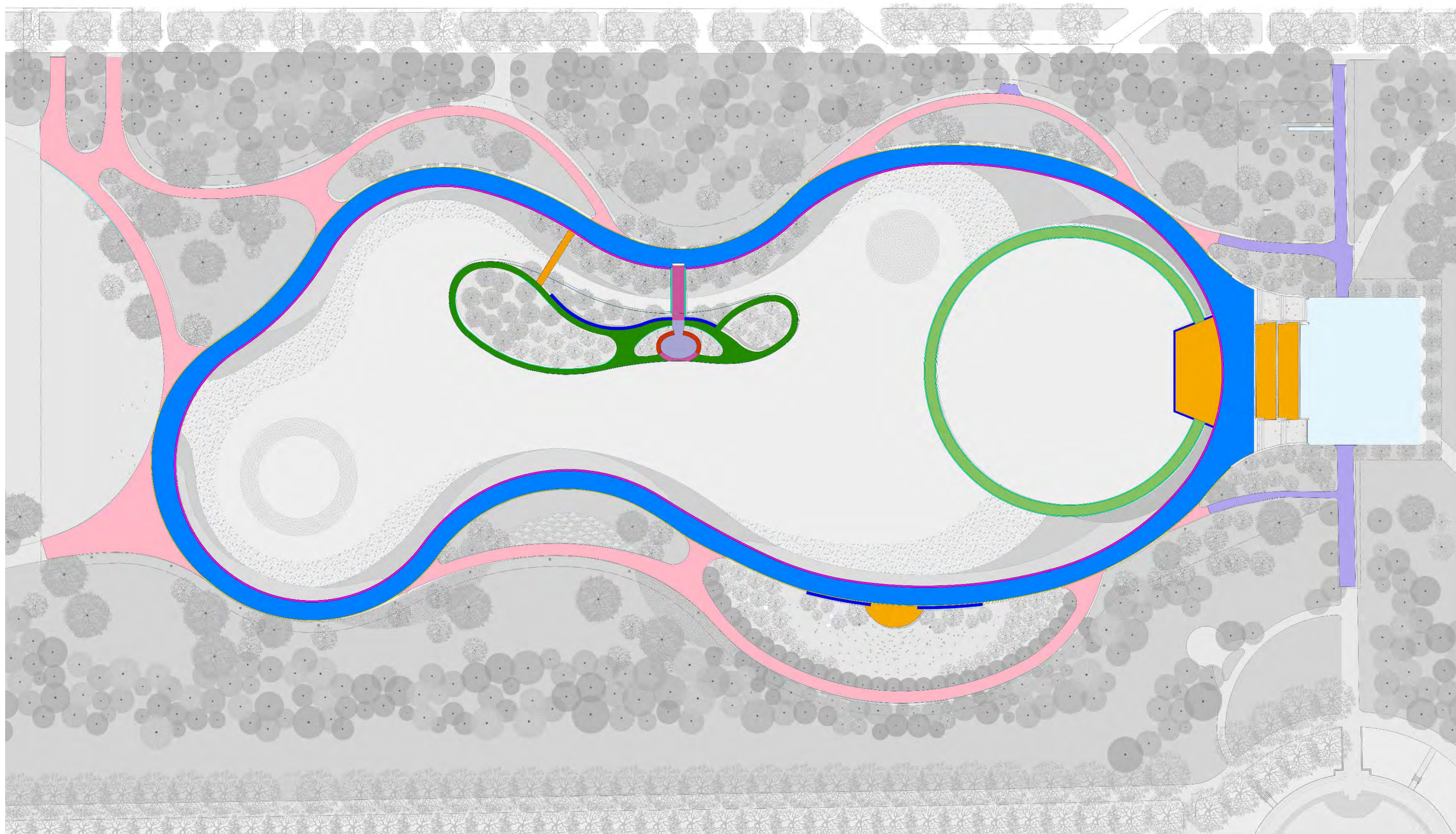
CONSTITUTION GARDENS | LAKE EDGE LIGHTING AND INTERPRETATION

















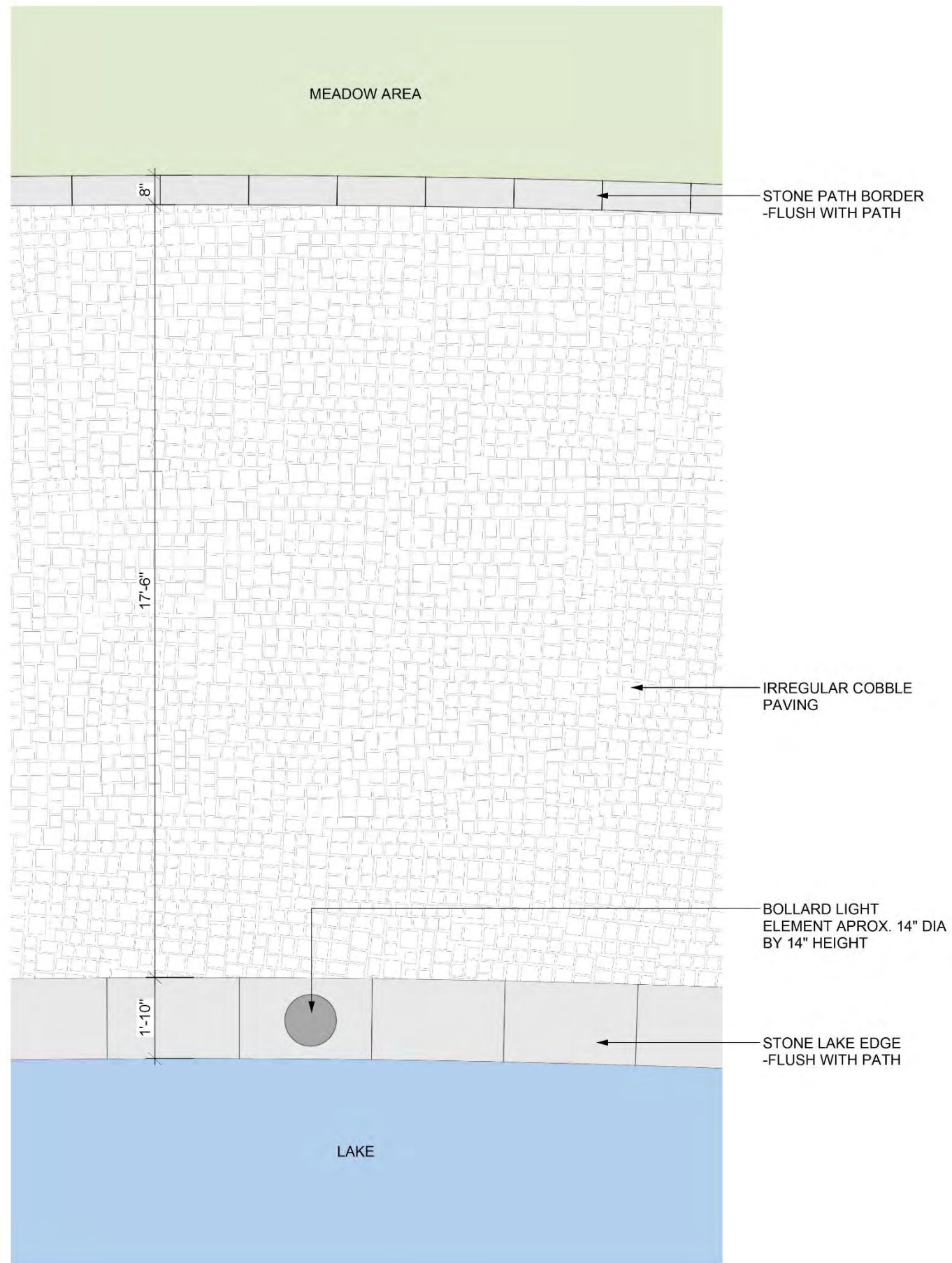
OPPORTUNITIES FOR INTERPRETATION WITH METAL INLAY OR ENGRAVING IN LAKE EDGE STONE



CONSTITUTION GARDENS | LAKE EDGE INTERPRETATION



- | | | | |
|--|---|---|---|
|  ASPHALT PAVING |  ISLAND COBBLE PAVING |  WOOD DECKING |  REPLACE IN KIND |
|  LAKE PERIMETER COBBLE PAVING |  MEMORIAL PAVING |  STONE BRIDGE PAVING |  CONCRETE PAVING |
|  22" FLUSH STONE CURB |  STACKED STONE WALL |  LAKE RING COBBLE PAVING | |
|  8" FLUSH STONE CURB |  4" FLUSH STONE CURB |  12" STONE CURB | |



PLAN OF LAKE PATH MATERIALS



LAKE EDGE FLUSH CURB, COBBLE PAVING
AND LOW PROFILE /LIGHT



LAKE RING COBBLE PAVING, CURB, STACK
STONE WALL AND DECKING



STONE WALL AND GRANITE CURB MATERIAL



GRANITE PAVING POSSIBLE MATERIALS



WOOD DECKING



STACKED STONE WALL



COBBLE LAYOUT PATTERN

