



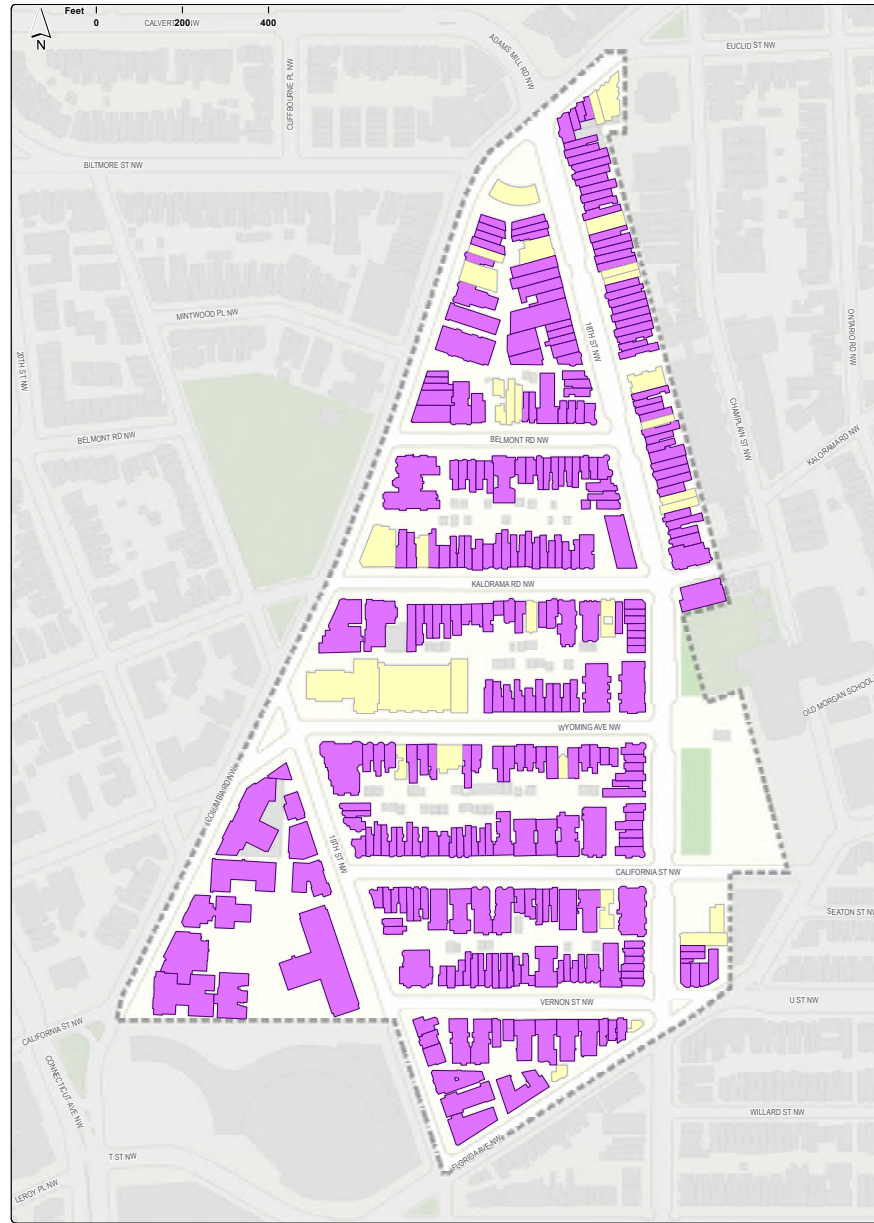
# ADAMS EDUCATION CAMPUS

## COMMISSION OF FINE ARTS

### CONCEPT REVIEW SUBMISSION

7.6.2023





■ Contributing  
■ Non-Contributing

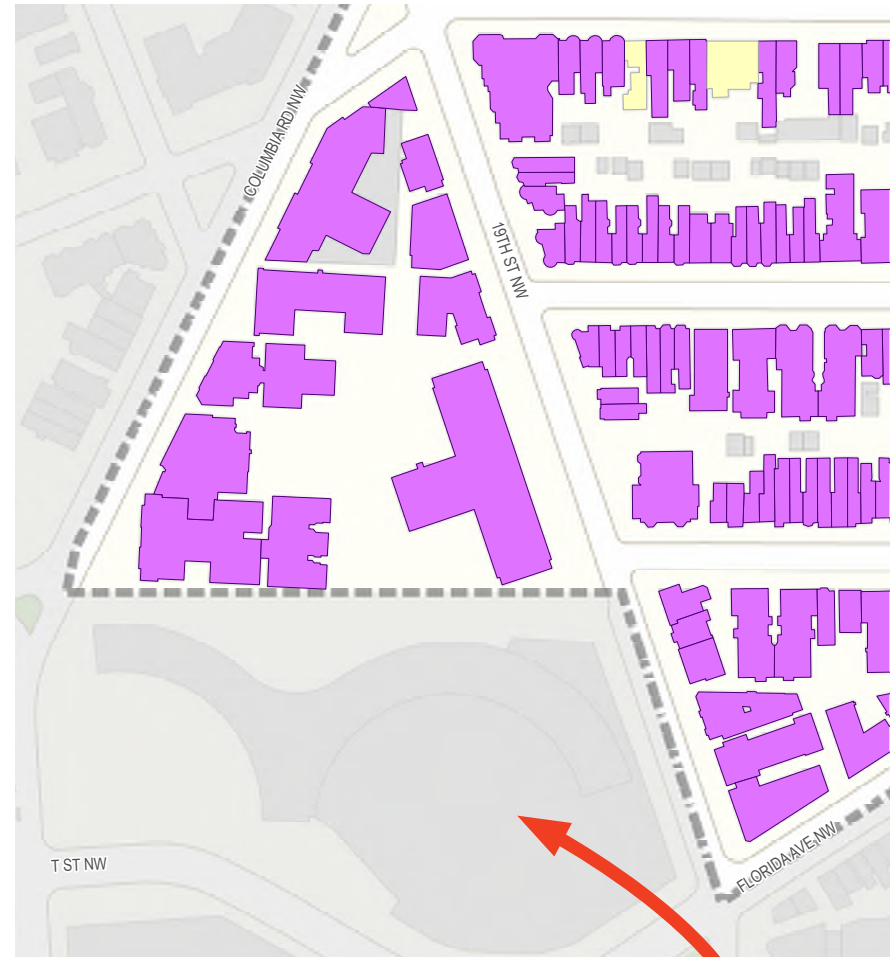
**Washington Heights  
Historic District**

Period of Significance  
1891-1950



This project has been funded in part by the U.S. Department of the Interior, National Park Service Historic Preservation Fund grant funds, administered by the District of Columbia's Historic Preservation Office.

April 01, 2016  
This map is as accurate as currently available data allows. It is a planning and informational document not intended for legal determinations.



**HILTON HOTEL:  
INDIVIDUALLY LISTED**

**1 EXISTING SITE ANALYSIS: HISTORIC DISTRICT**





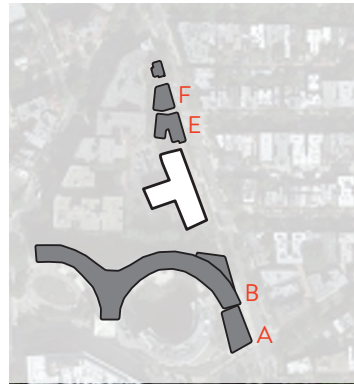


1 EXISTING SITE ANALYSIS: SITE CONDITIONS

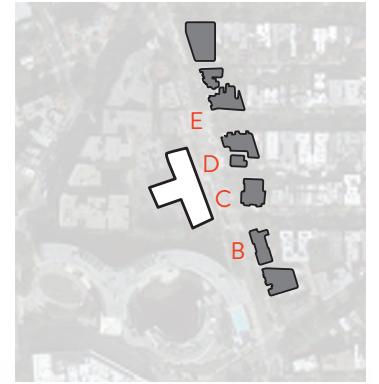




## 19TH ST. WEST SIDE (S - N)



## 19TH ST. EAST SIDE (S - N)

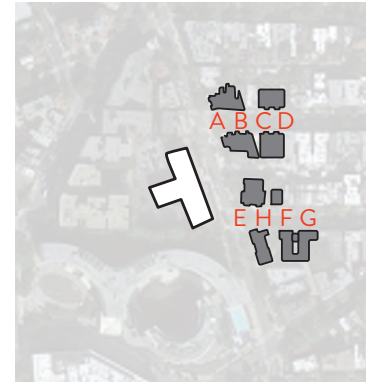


# 1 EXISTING SITE ANALYSIS: NEIGHBORING CONDITIONS

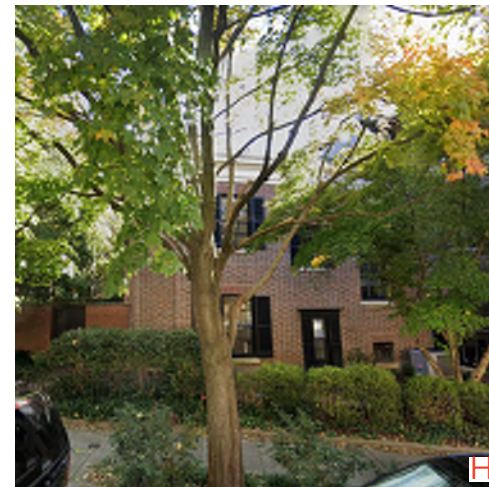


# CALIFORNIA ST. + VERNON ST.

CALIFORNIA ST.



VERNON ST.

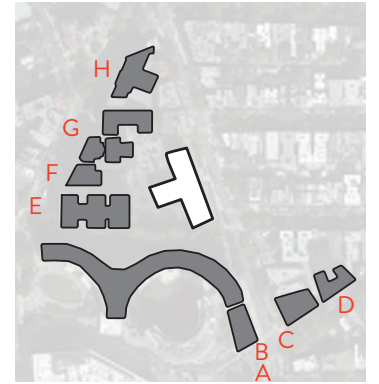


## 1 EXISTING SITE ANALYSIS: NEIGHBORING CONDITIONS



# FLORIDA AVE. + COLUMBIA RD.

## FLORIDA AVE.

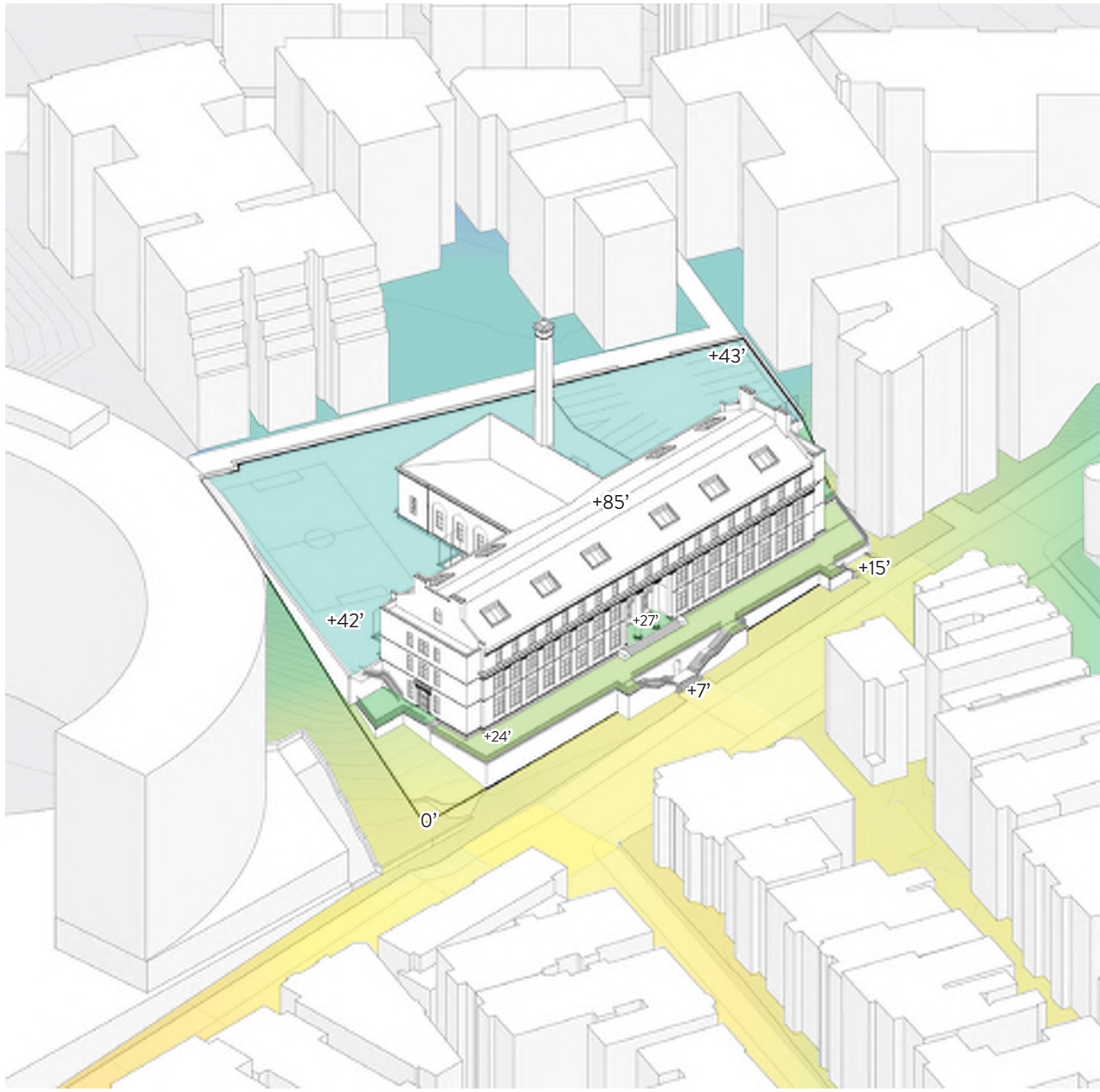


## VERNON ST.

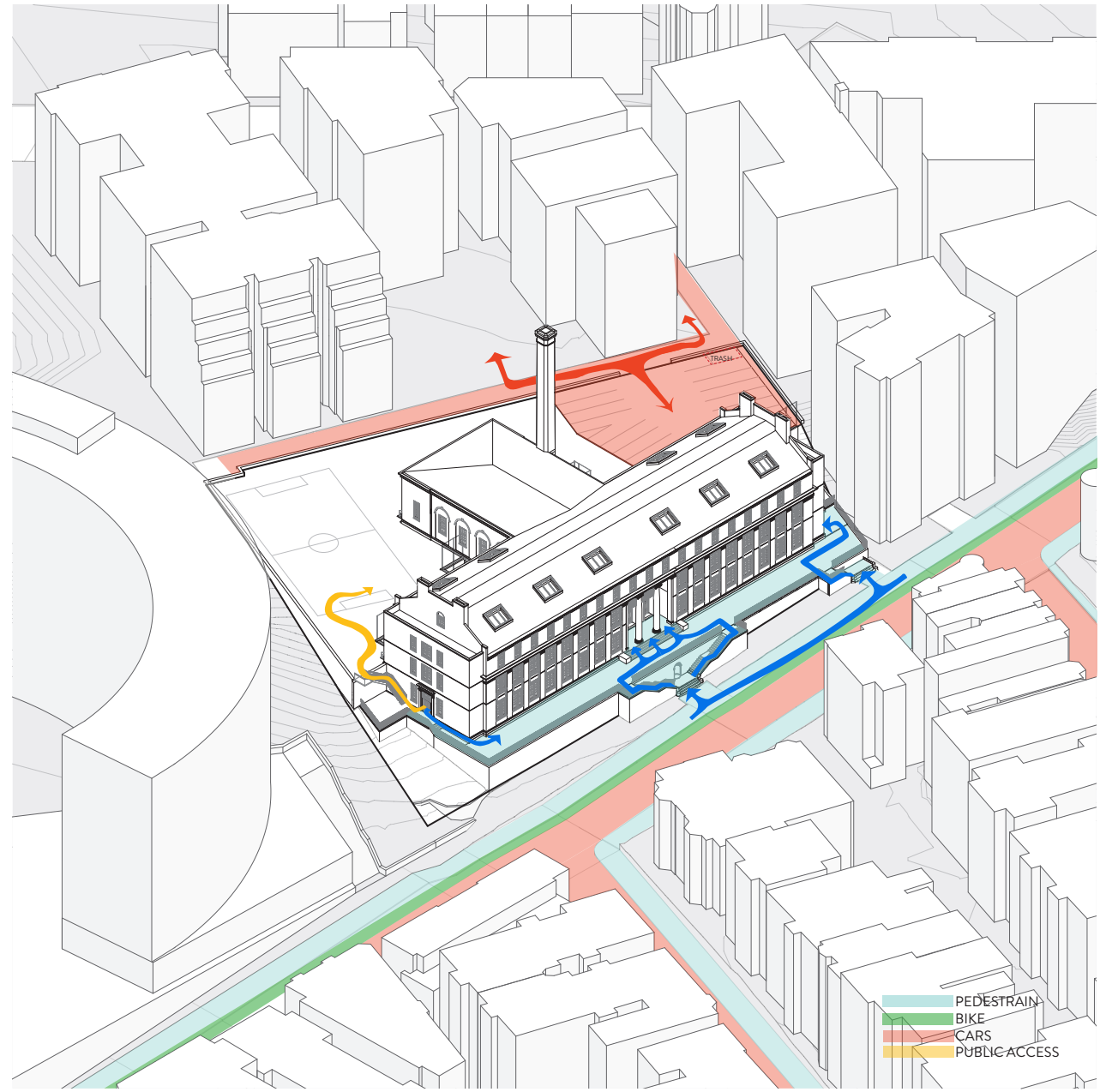


# 1 EXISTING SITE ANALYSIS: NEIGHBORING CONDITIONS





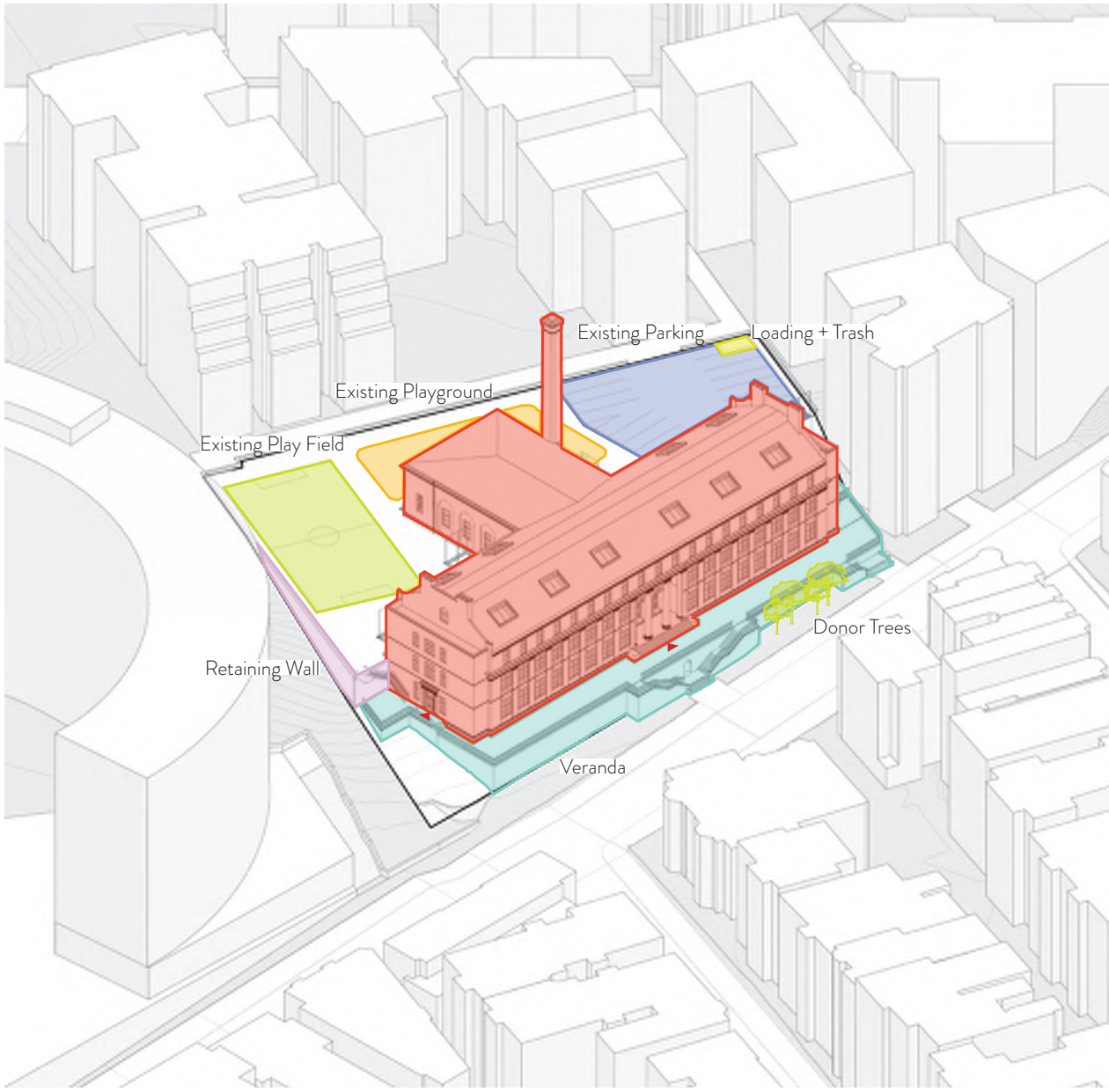
TOPOGRAPHY



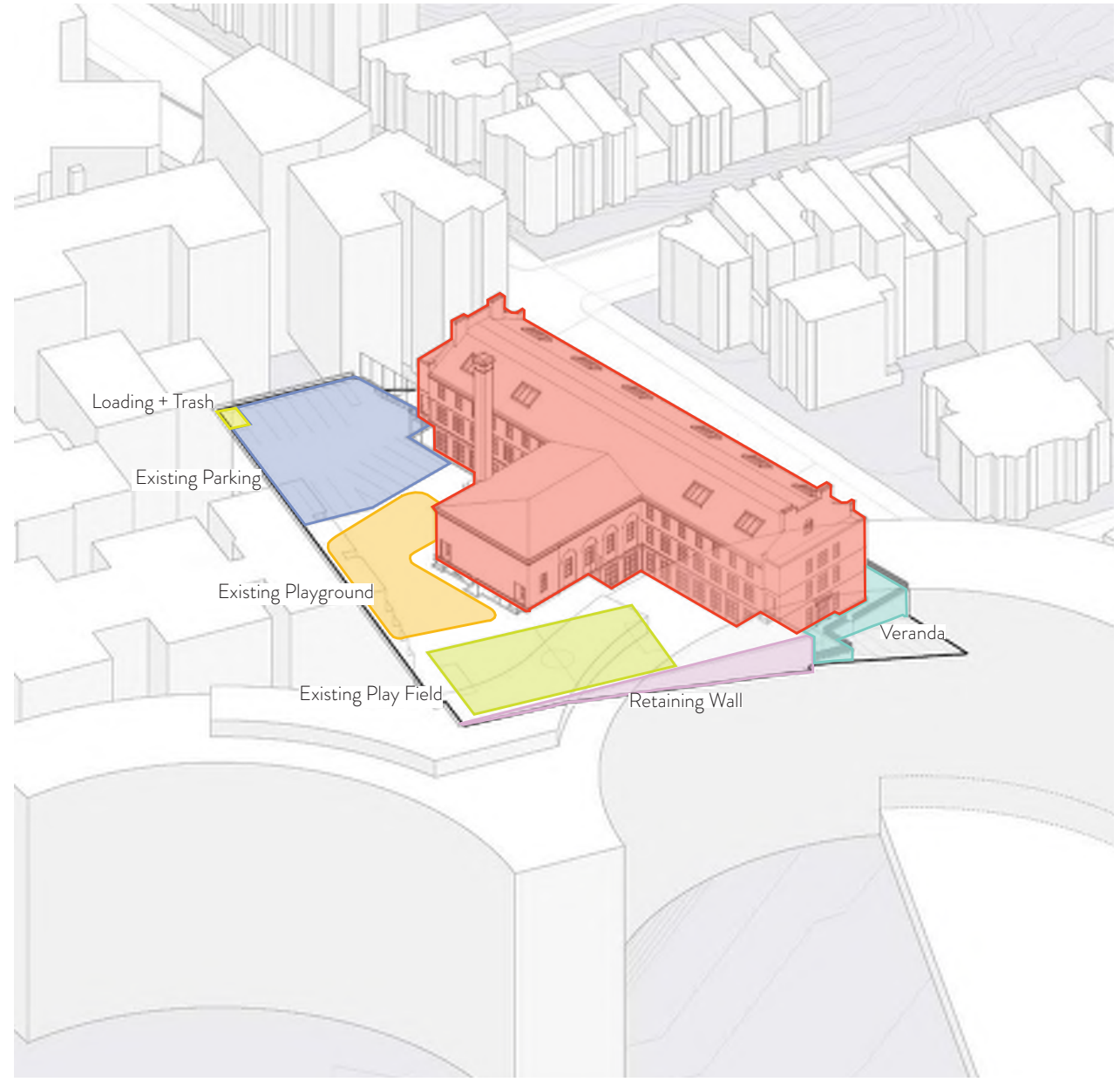
ACCESS

1 SITE ANALYSIS





SITE ELEMENTS

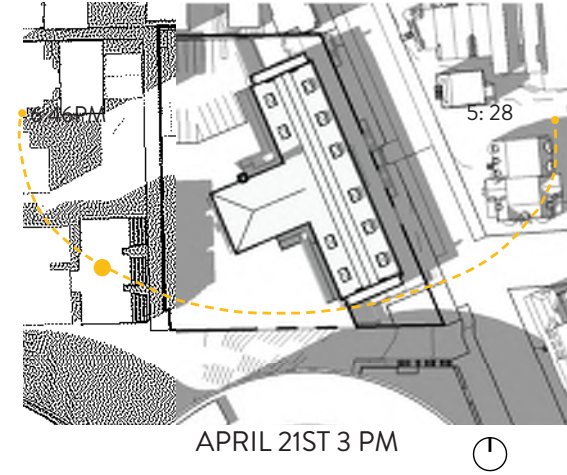
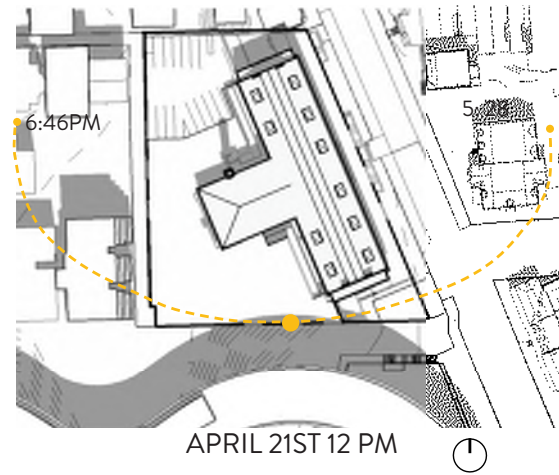
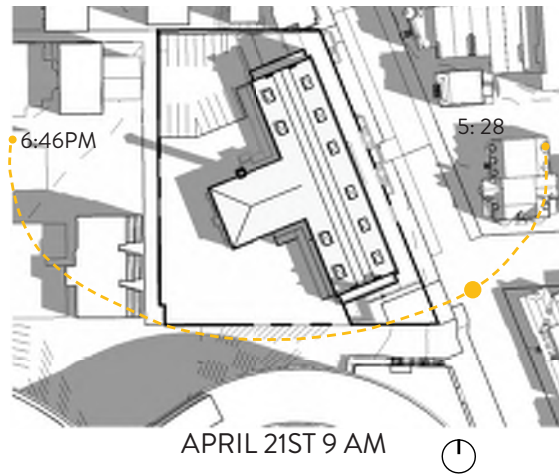


SITE ELEMENTS

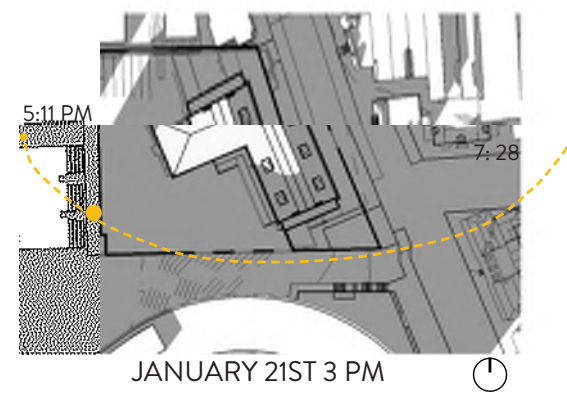
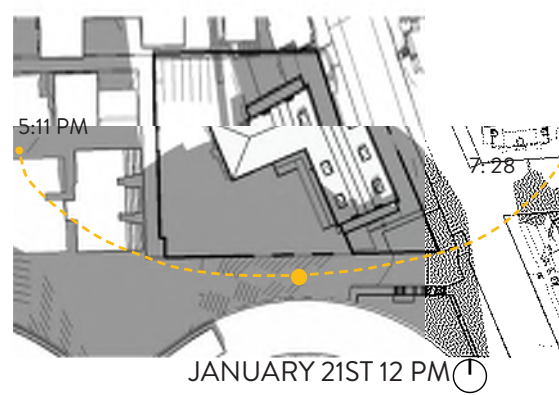
**1** SITE ANALYSIS



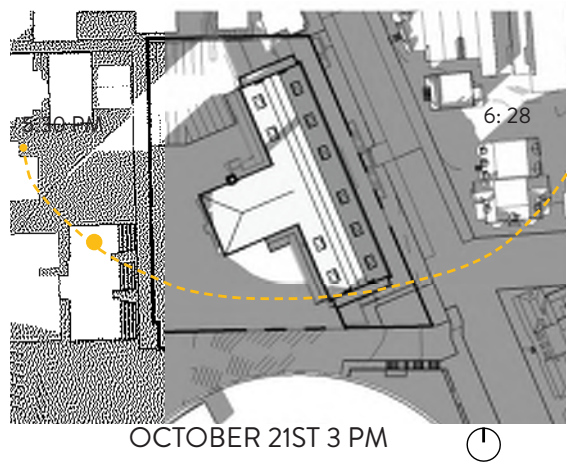
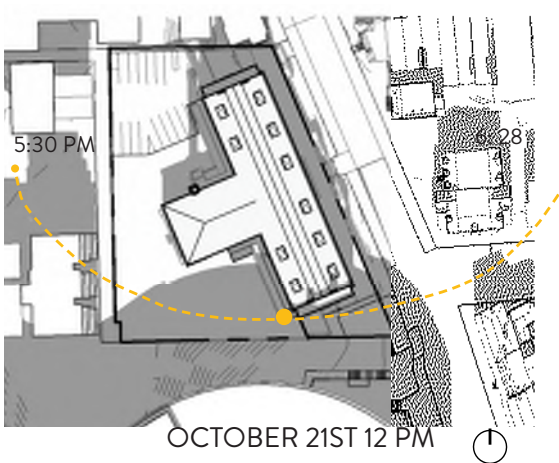
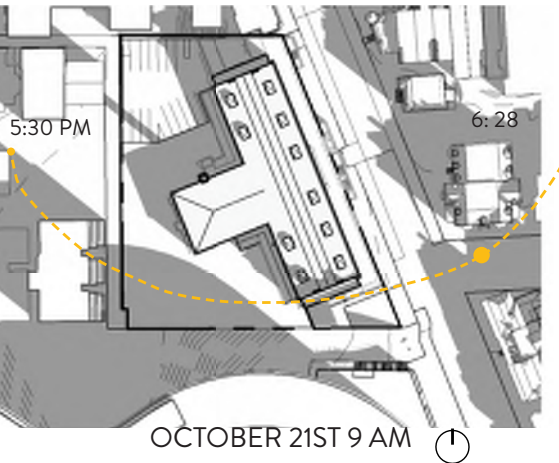
**SPRING**



**WINTER**



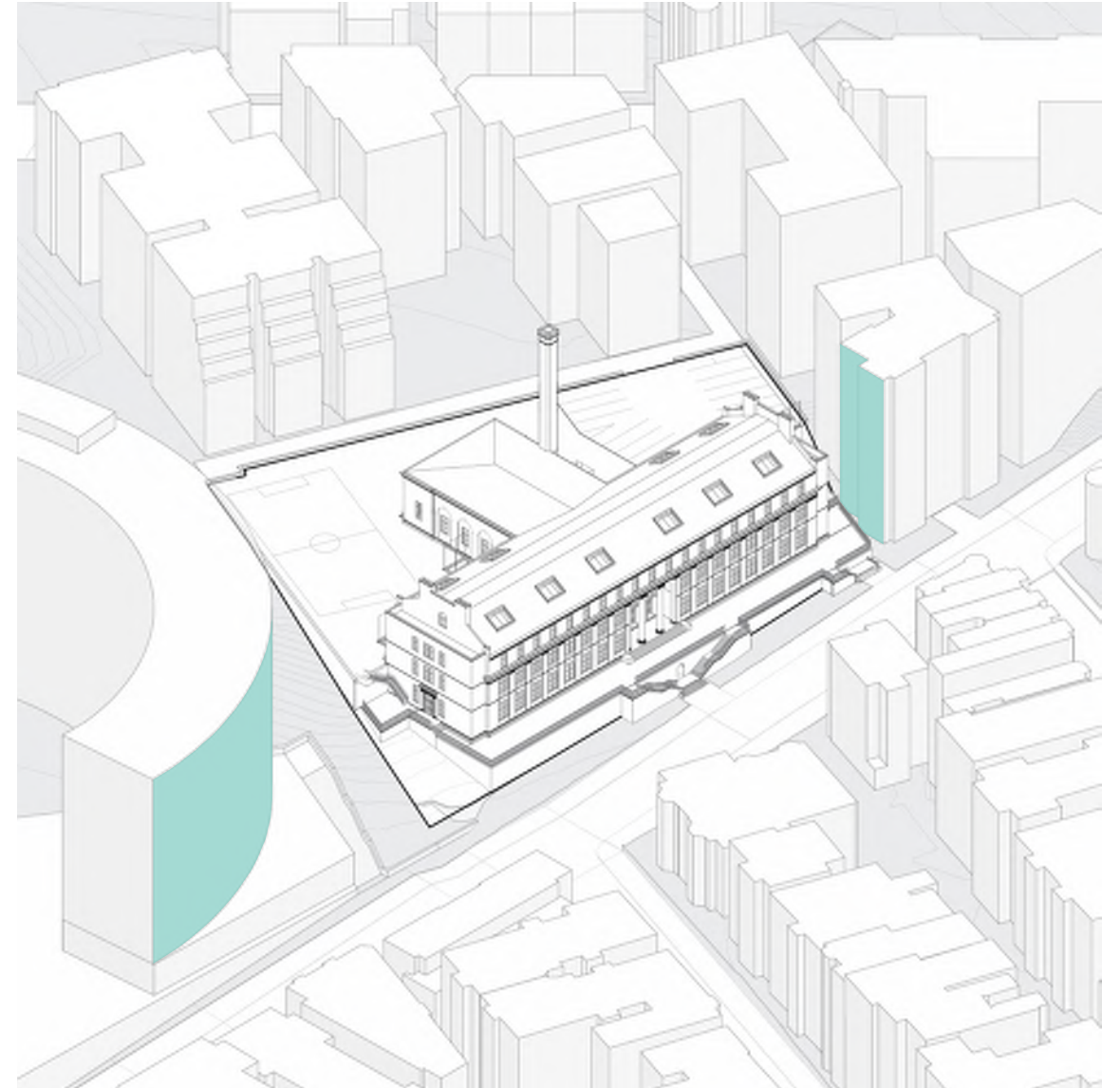
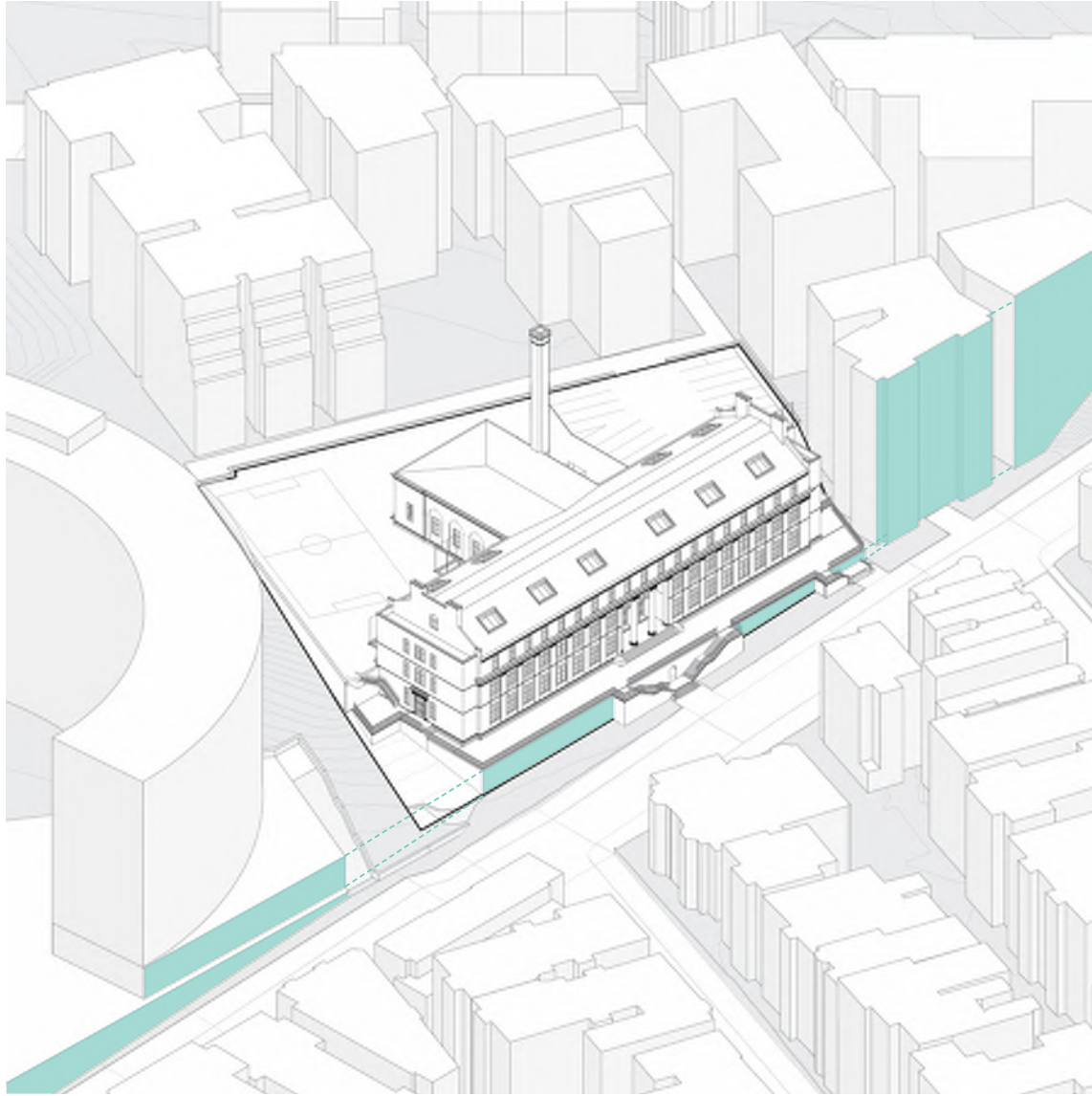
**FALL**



**1 EXISTING SITE ANALYSIS: SOLAR PATH**

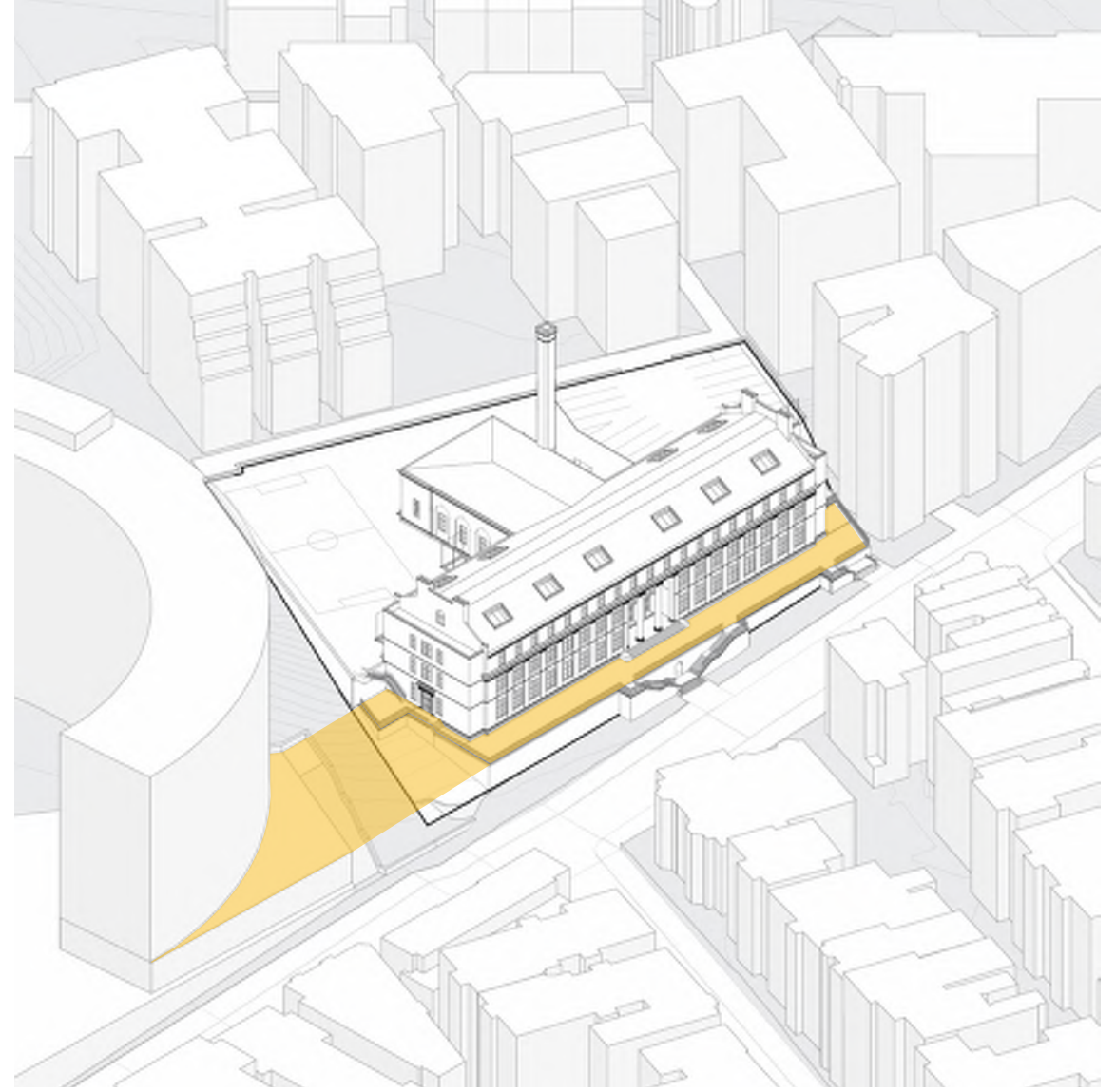
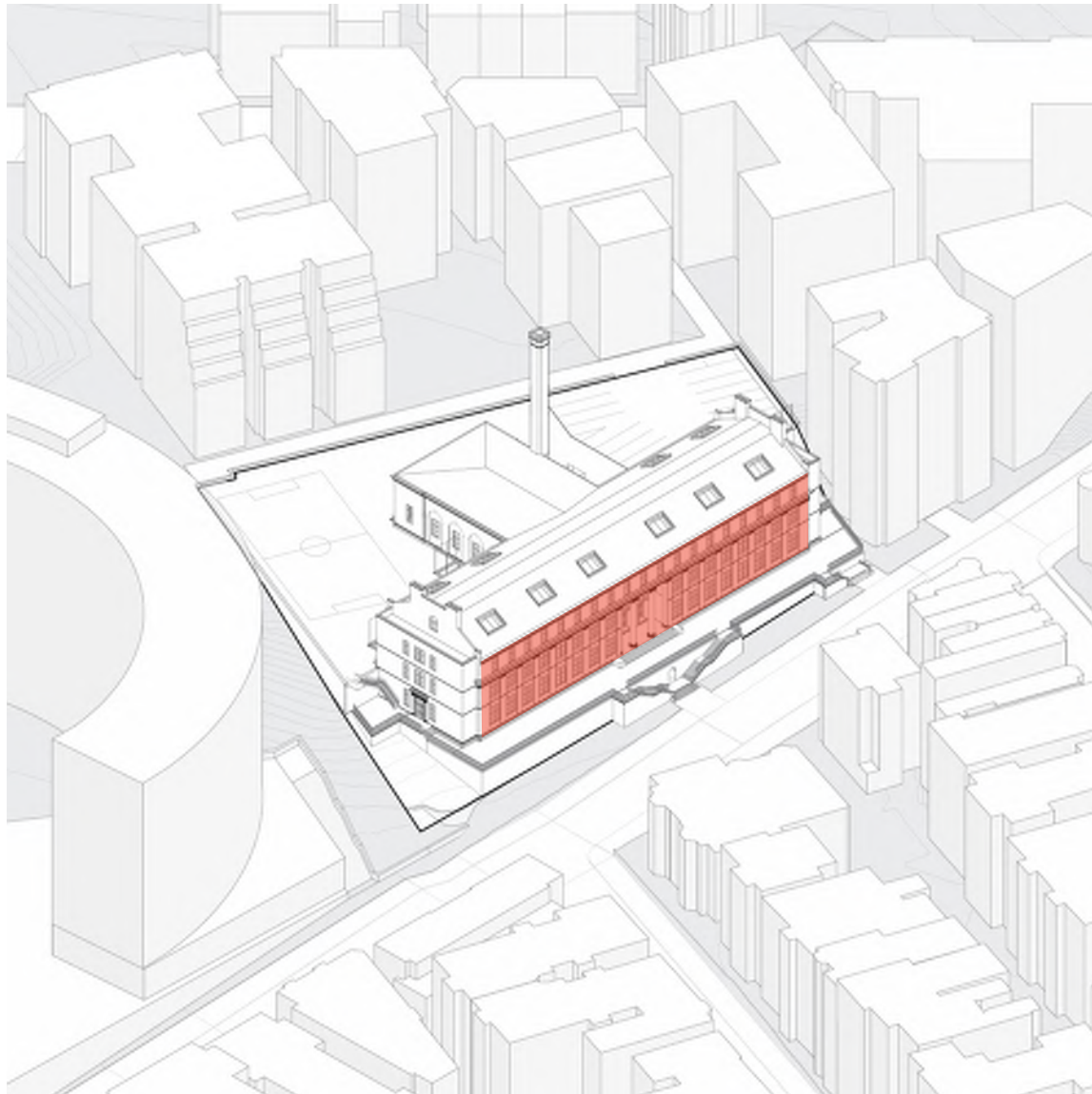






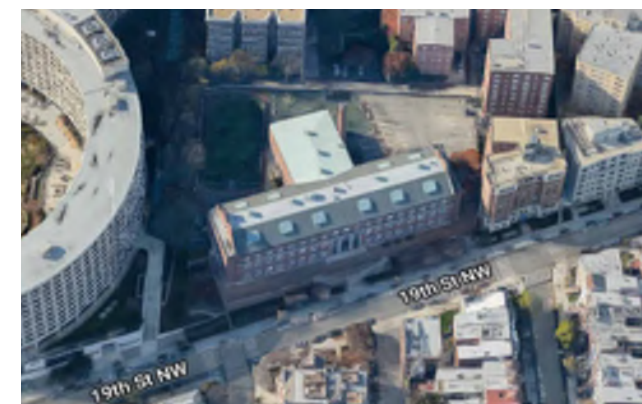
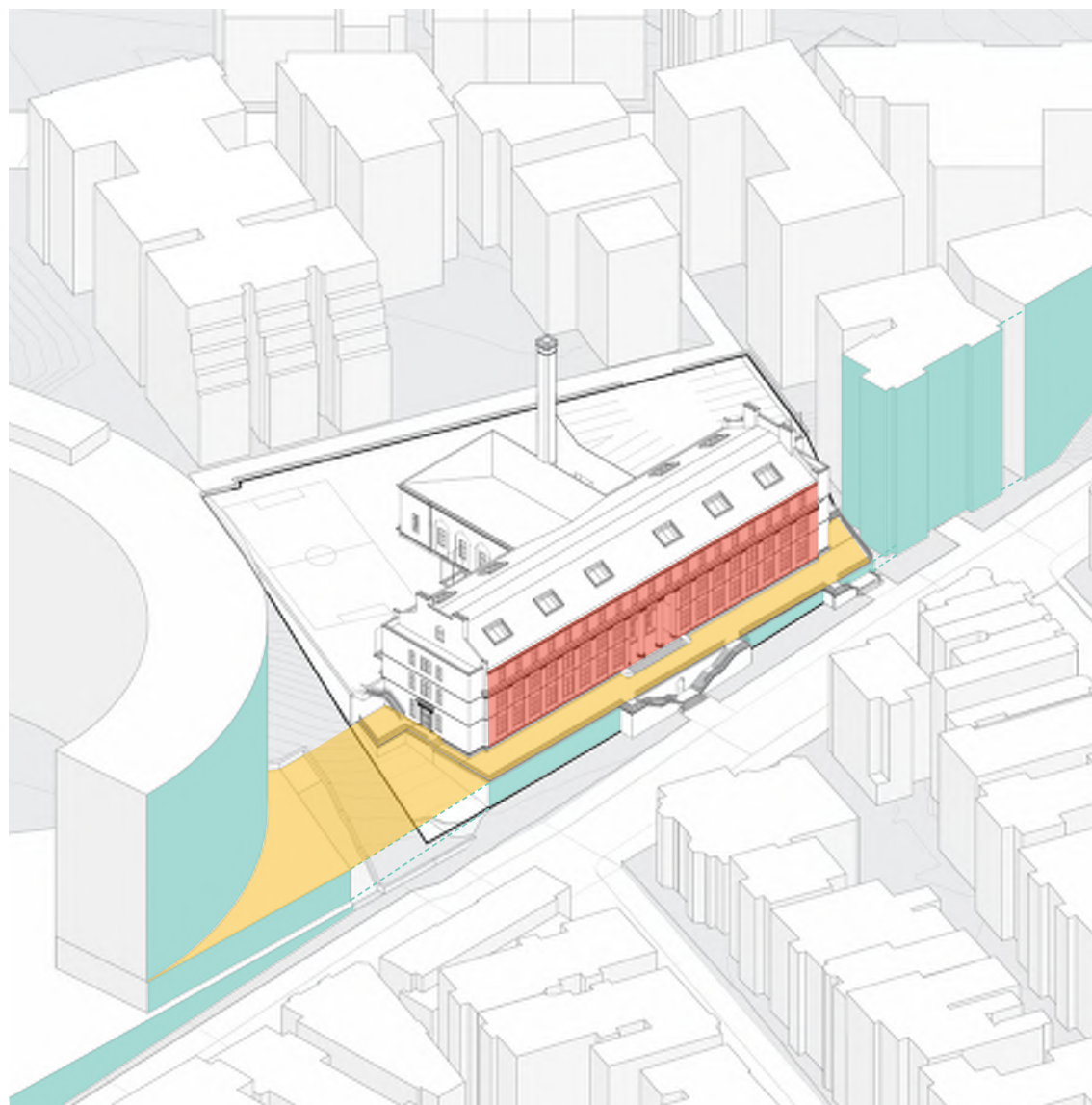
# 1 SITE ANALYSIS: ADJACENT CONDITIONS





**1** EXISTING SITE ANALYSIS: ADJACENT SET BACKS

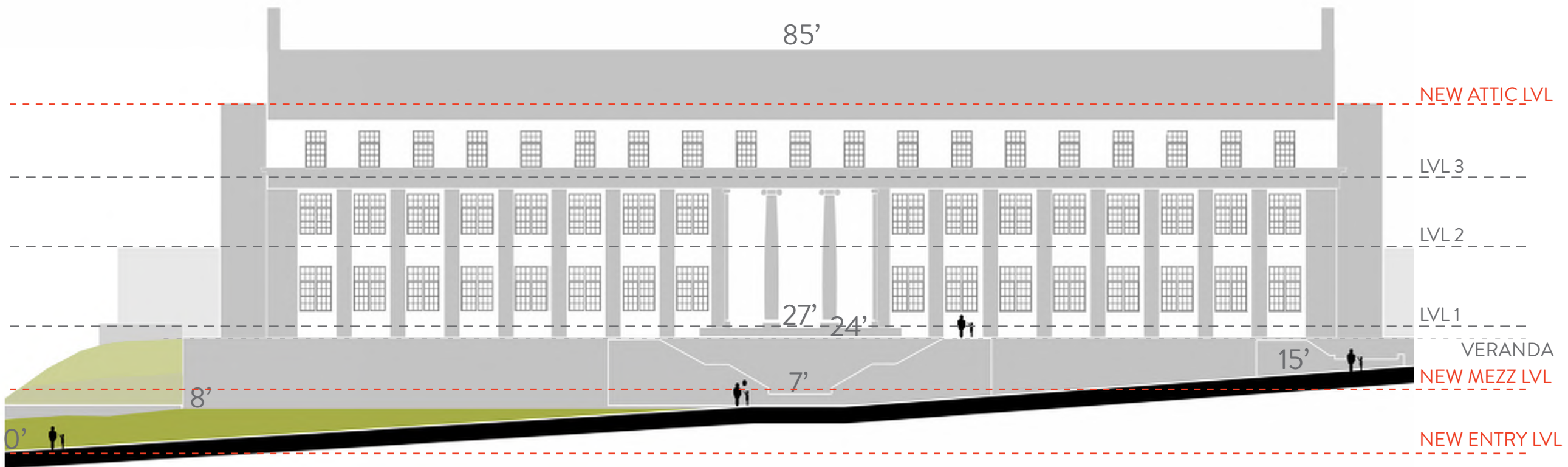




# 1 EXISTING SITE ANALYSIS: ADJACENT SET BACKS



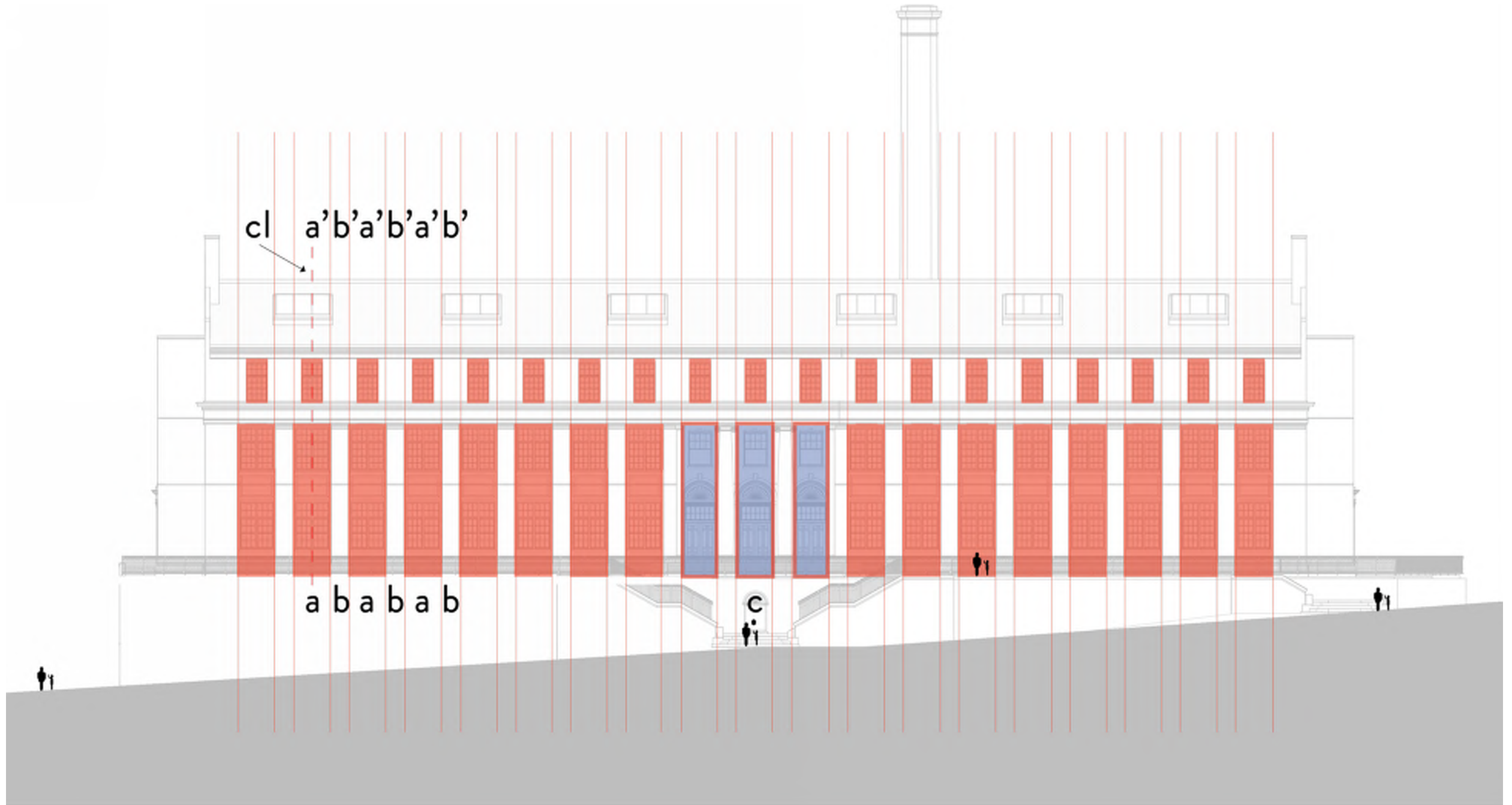




**1** FACADE ANALYSIS: SCALE

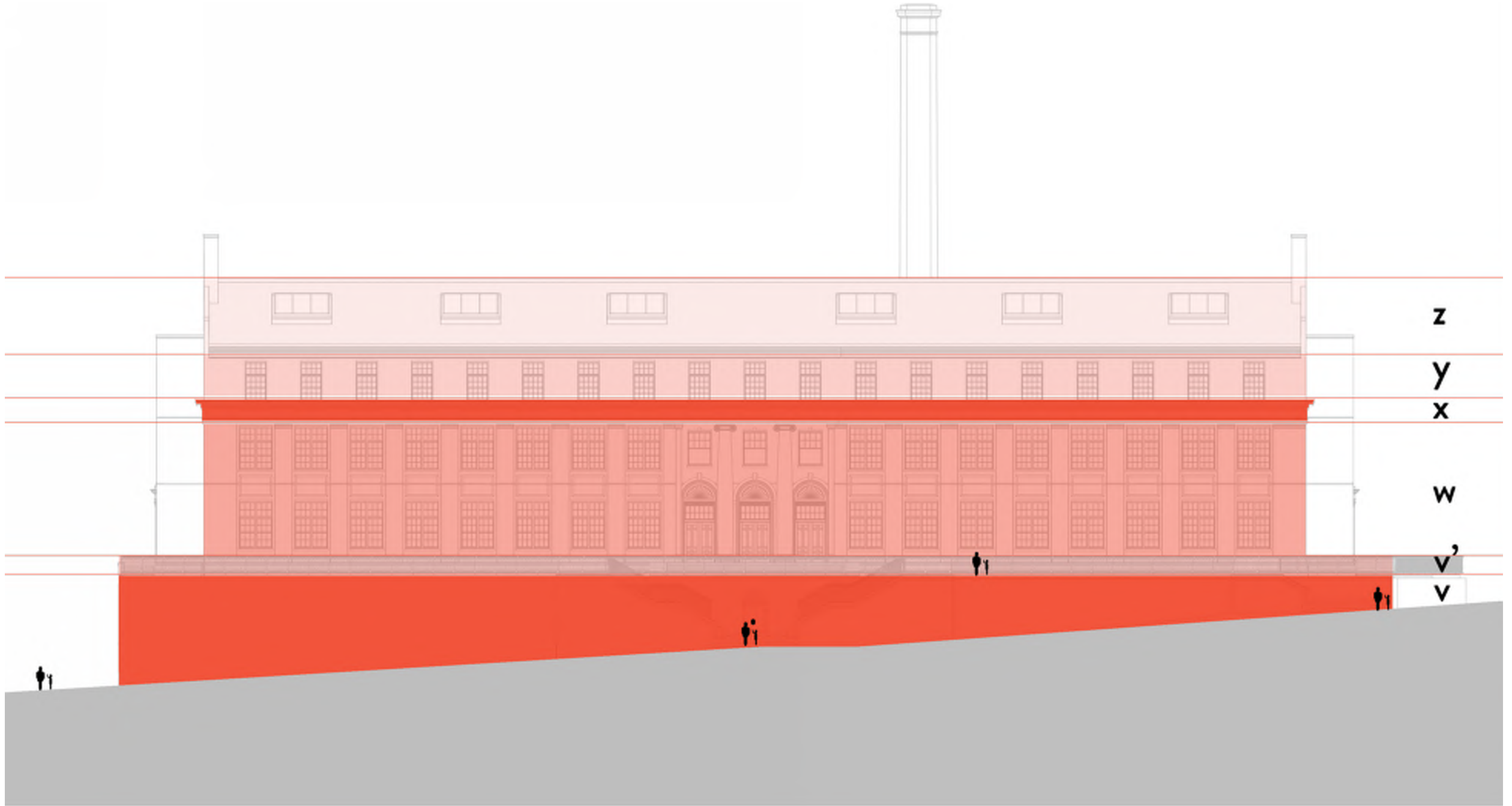




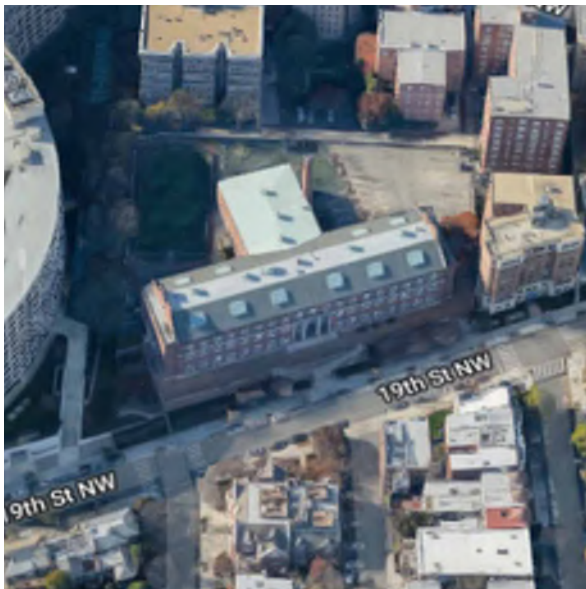
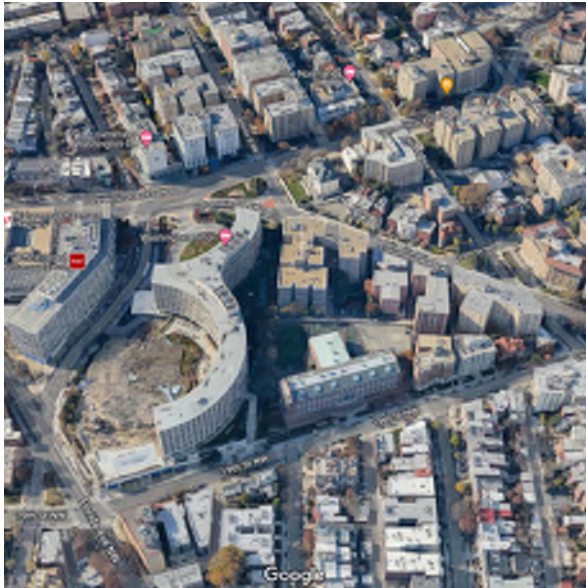


1 FACADE ANALYSIS: RHYTHM





# 1 FACADE ANALYSIS: HORIZONTAL ELEMENTS



1 DENSE URBAN SITE

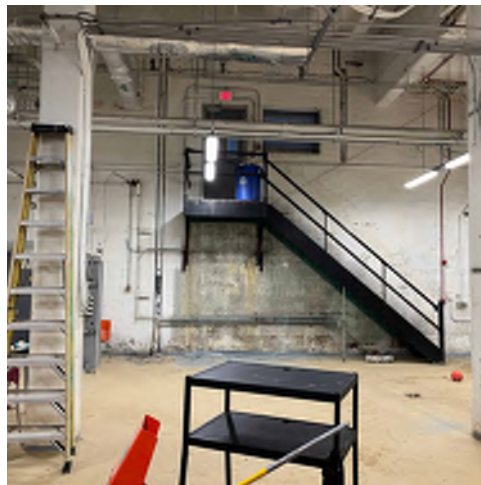
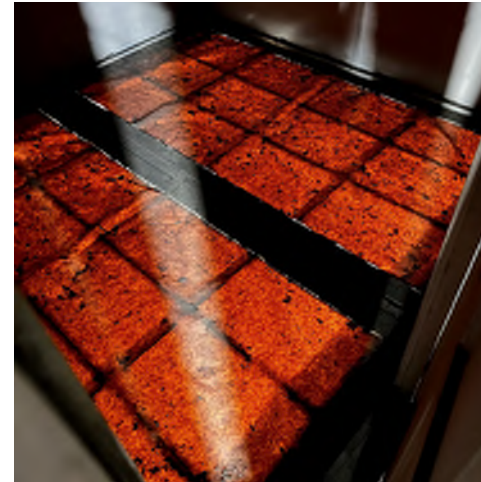
2 LACK OF EQUITABLE ACCESSIBLE ENTRY

3 STORM WATER MANAGEMENT (100% REQ'D ON-SITE)

2 DESIGN CONSIDERATIONS: SITE



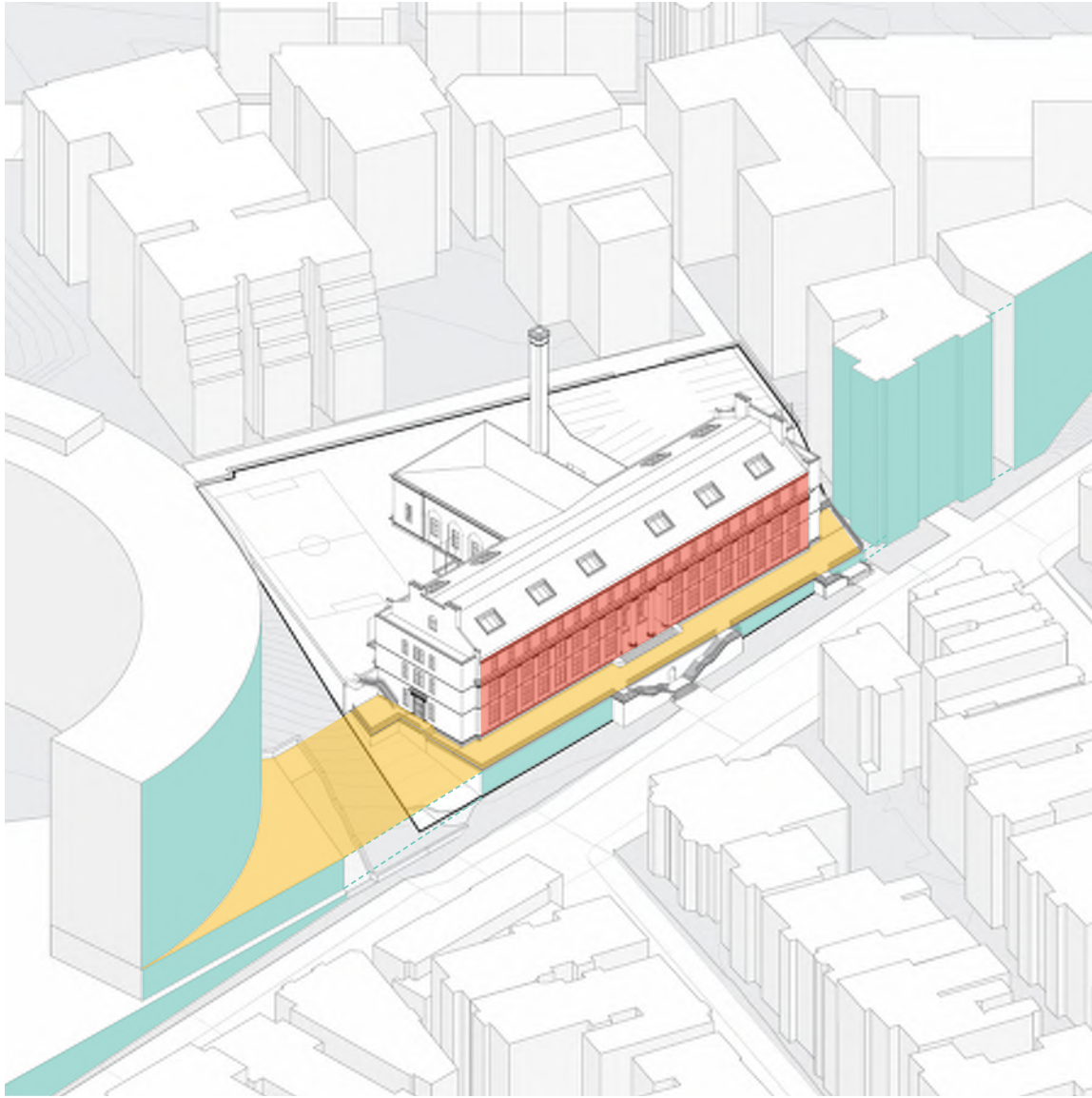




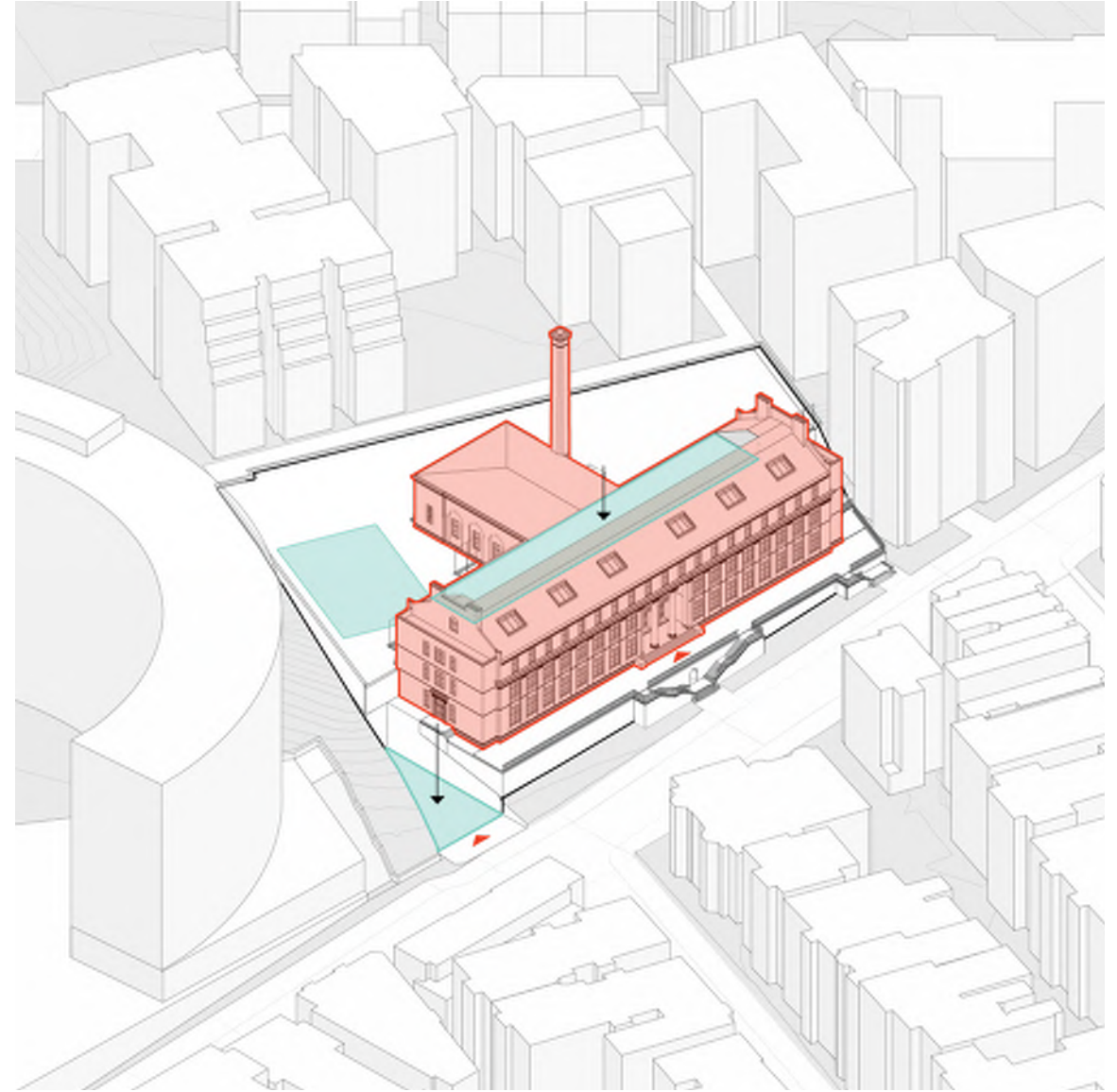
# 4 UTILIZE FOUND SPACE

# 5 BALANCE HISTORIC ELEMENTS WITH MODERNIZED PROGRAM



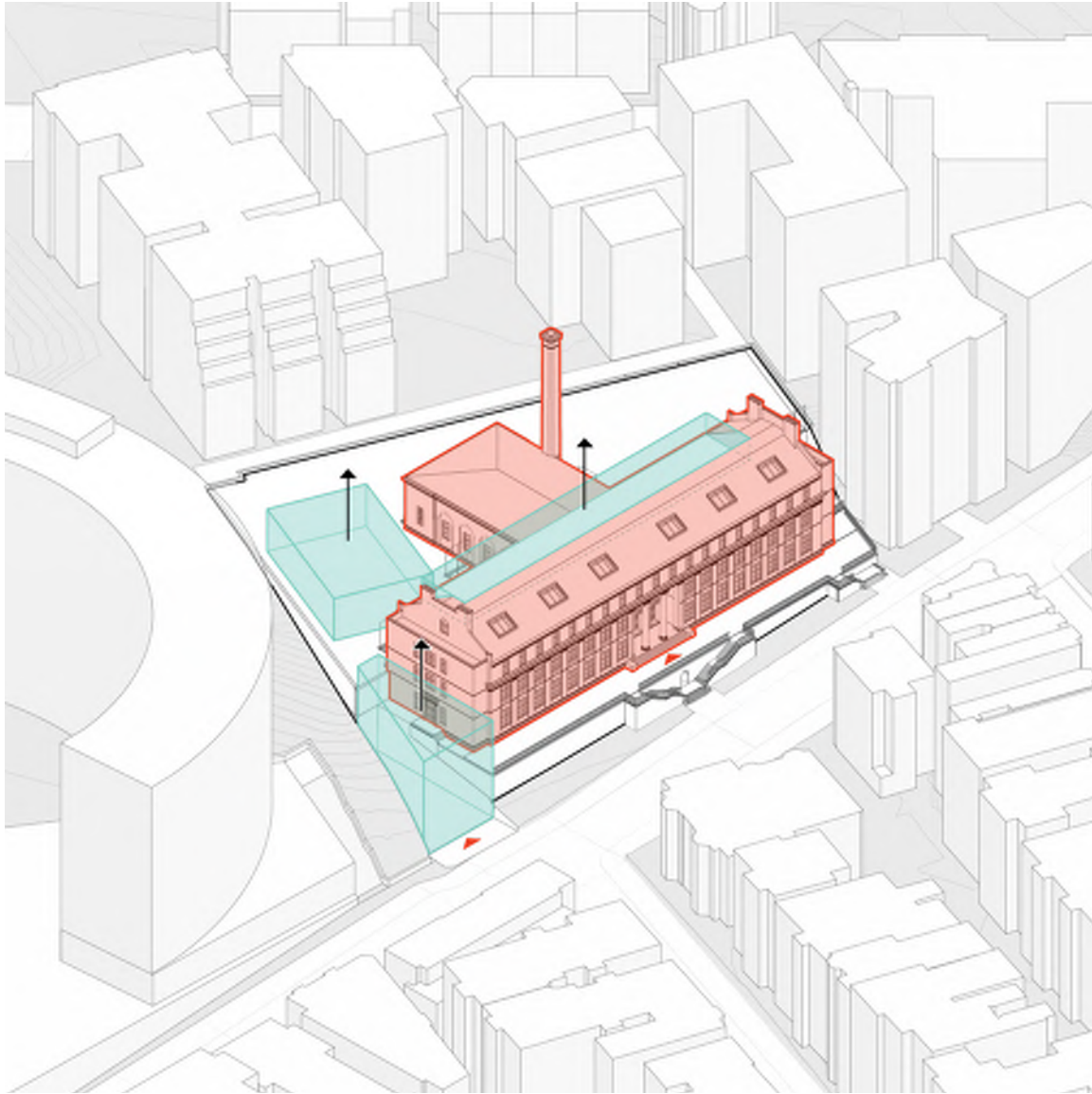


EXISTING CONDITION AT HISTORIC FACADE AND ENTRY

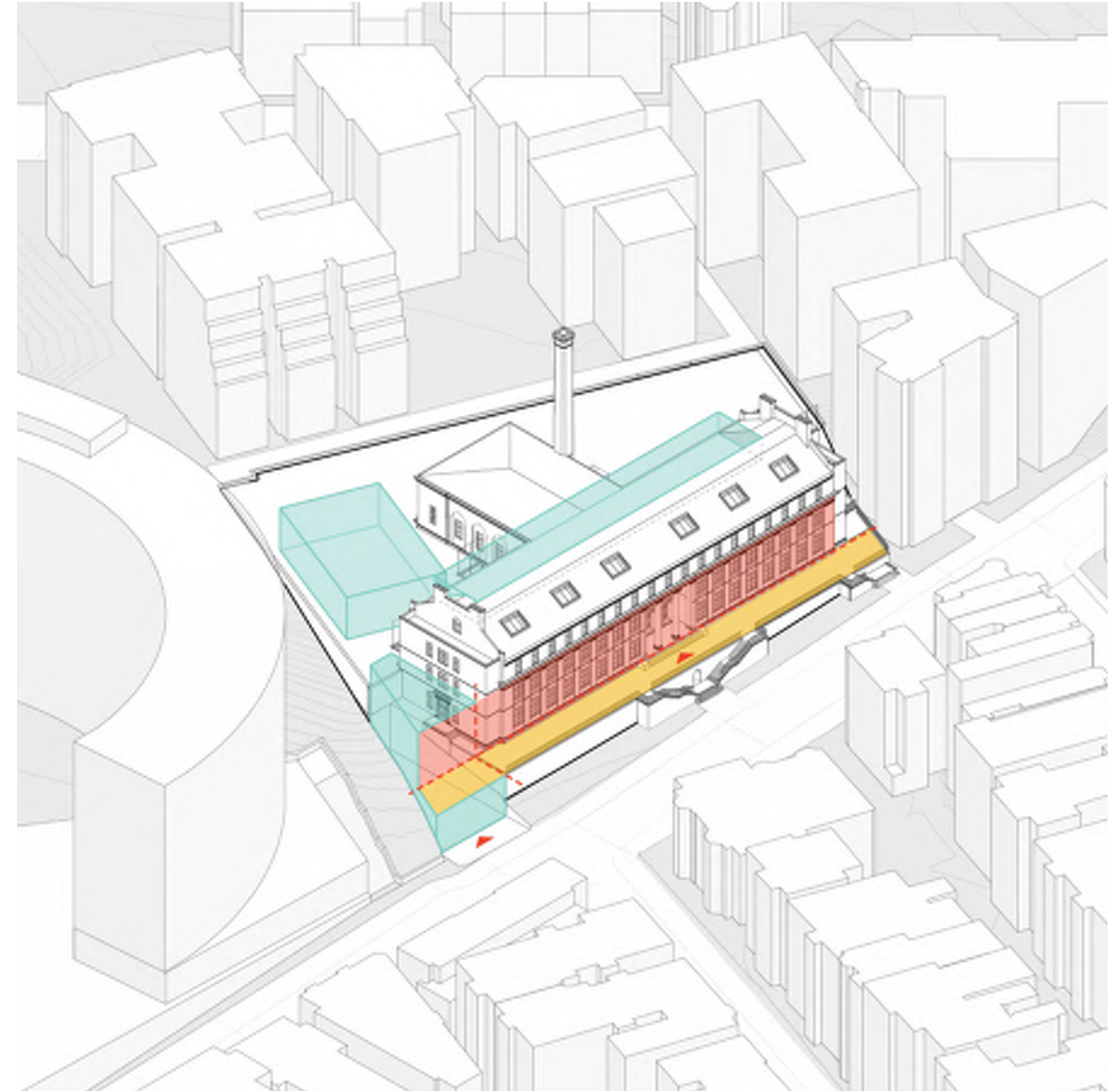


STEP 1: MAXIMIZE OPEN SPACE AND CREATE ACCESSIBLE ENTRY





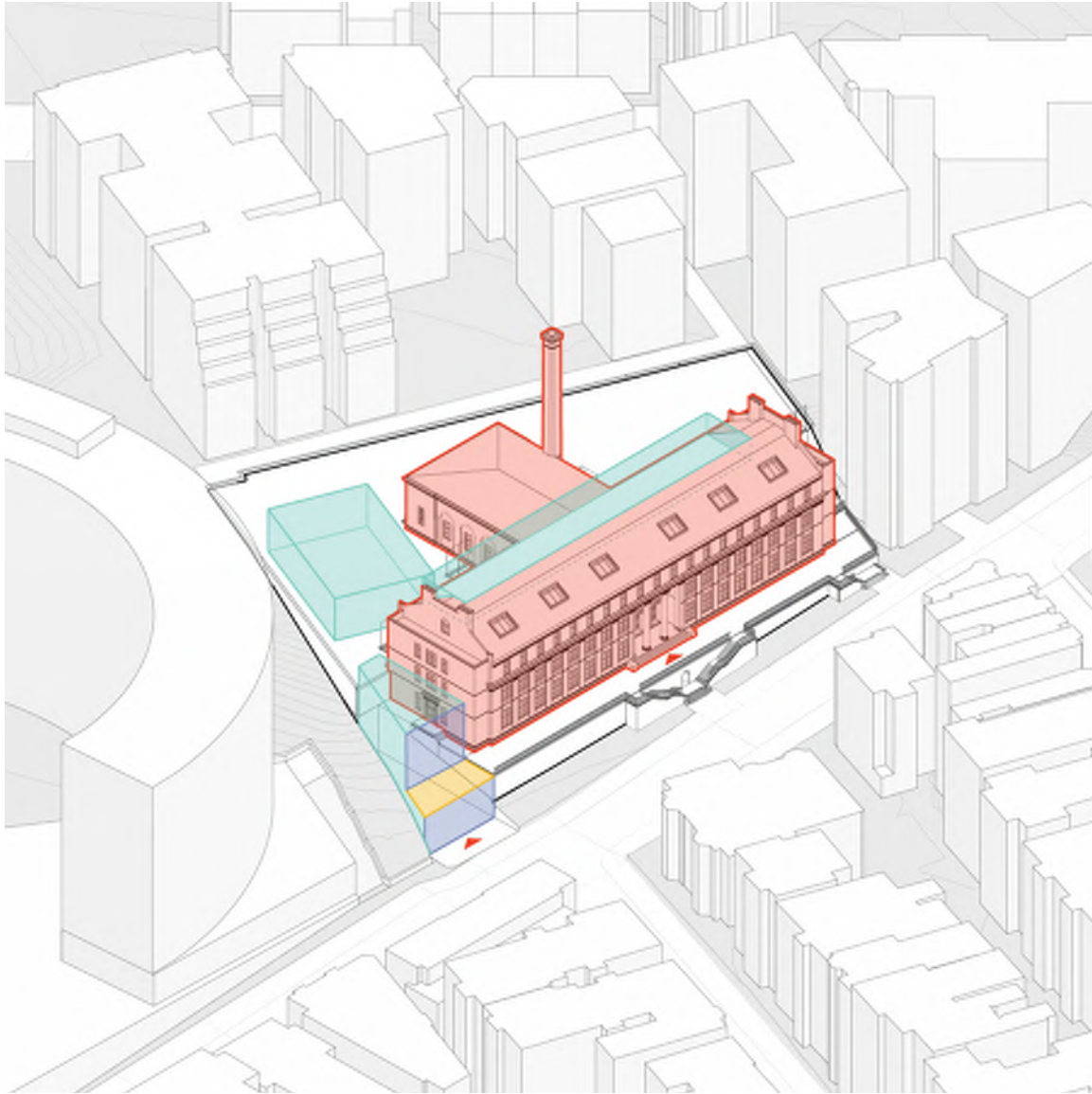
STEP 2: INCORPORATE MODERNIZED PROGRAM



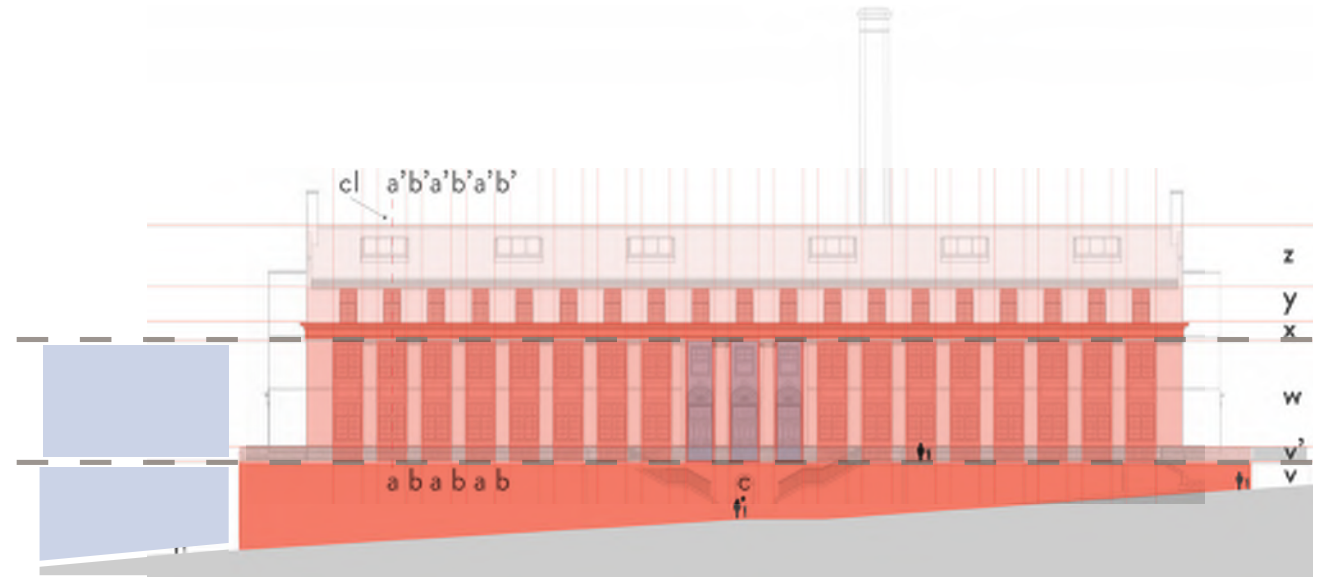
STEP 3: ALIGN WITH HISTORIC ELEMENTS

## 2 SITE INTERVENTION



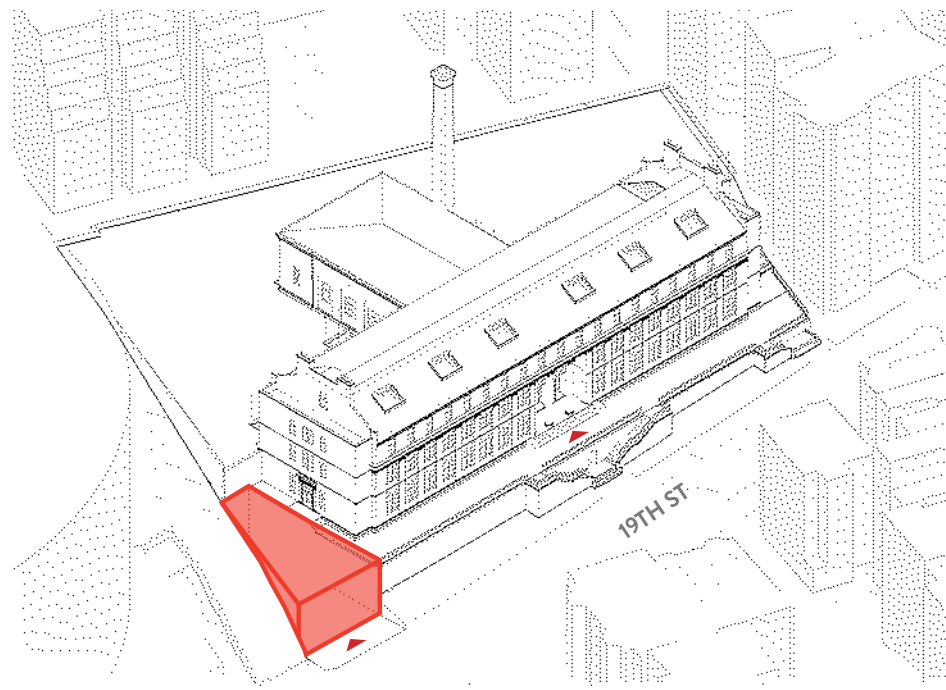


STEP 4: CREATE ACTIVE ENTRY AND LIBRARY AT NEW PAVILION

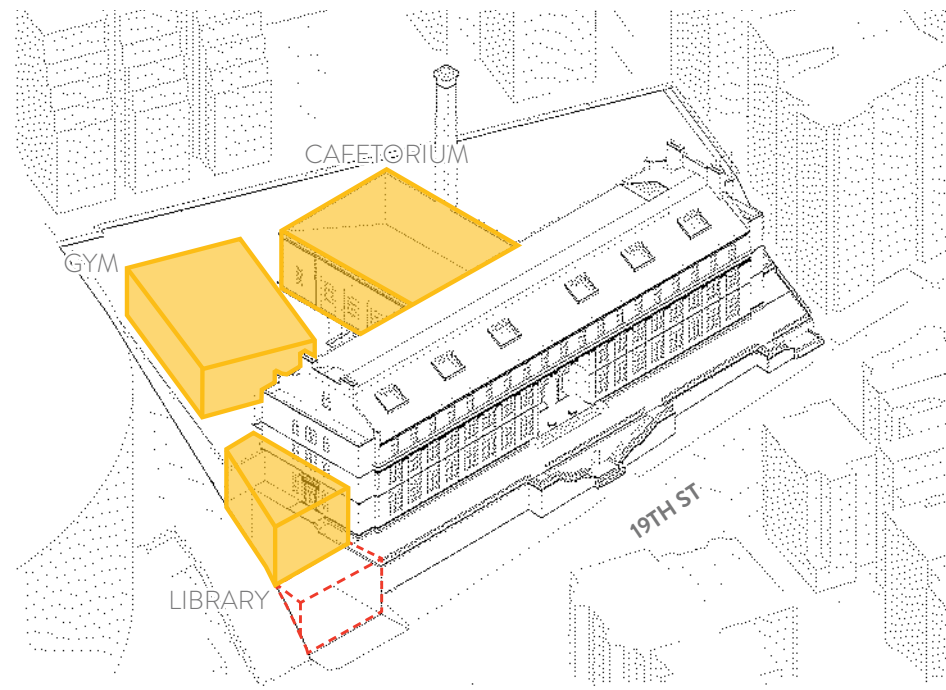


STEP 5: RELATE TO HISTORIC ELEMENTS

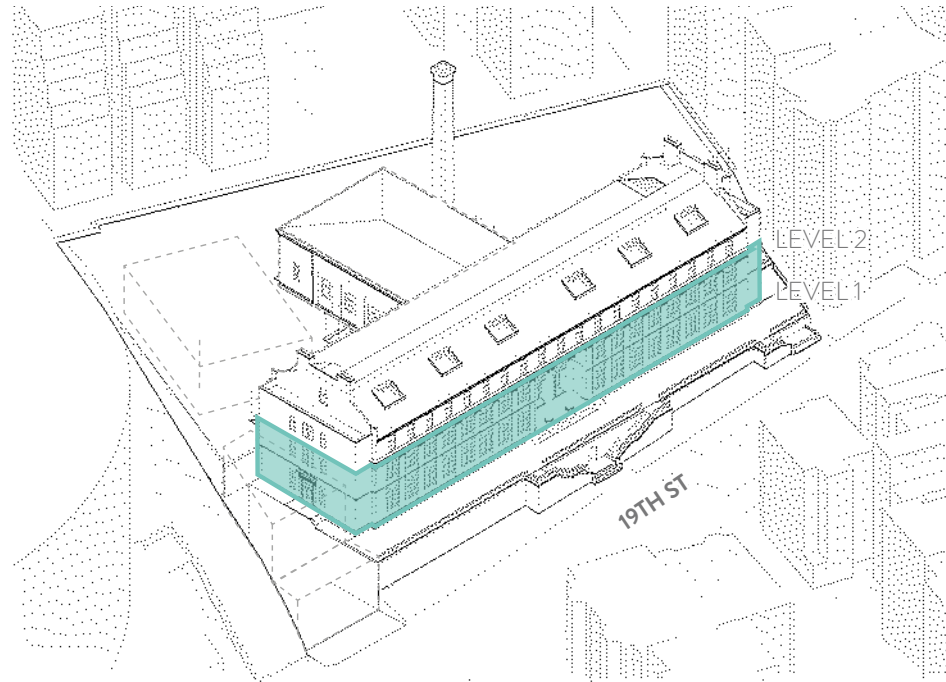




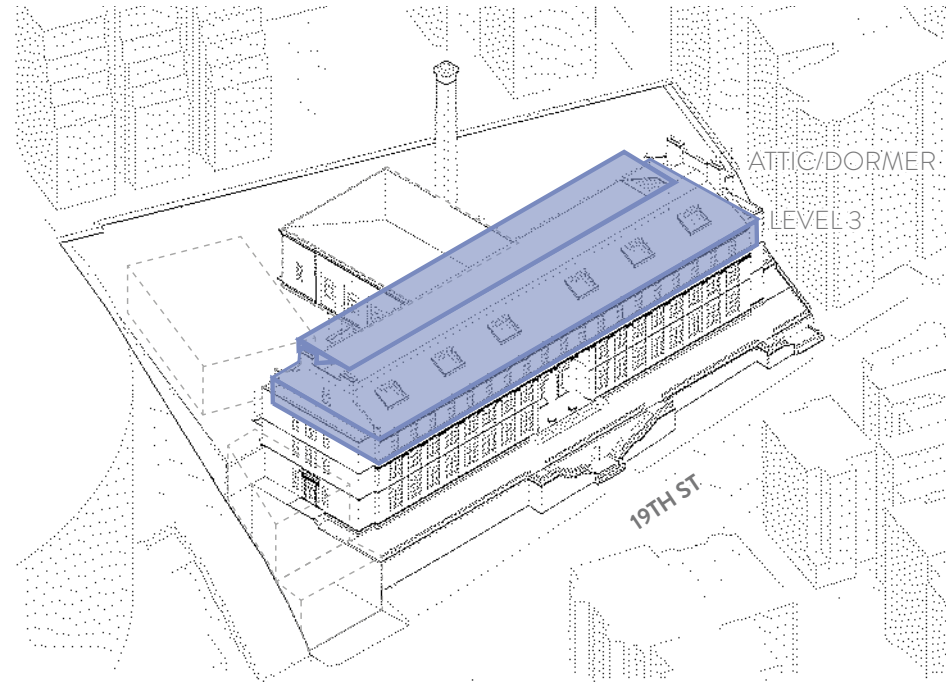
EQUITABLE ACCESSIBLE ENTRANCE



LIBRARY, GYM, + CAFETERIA



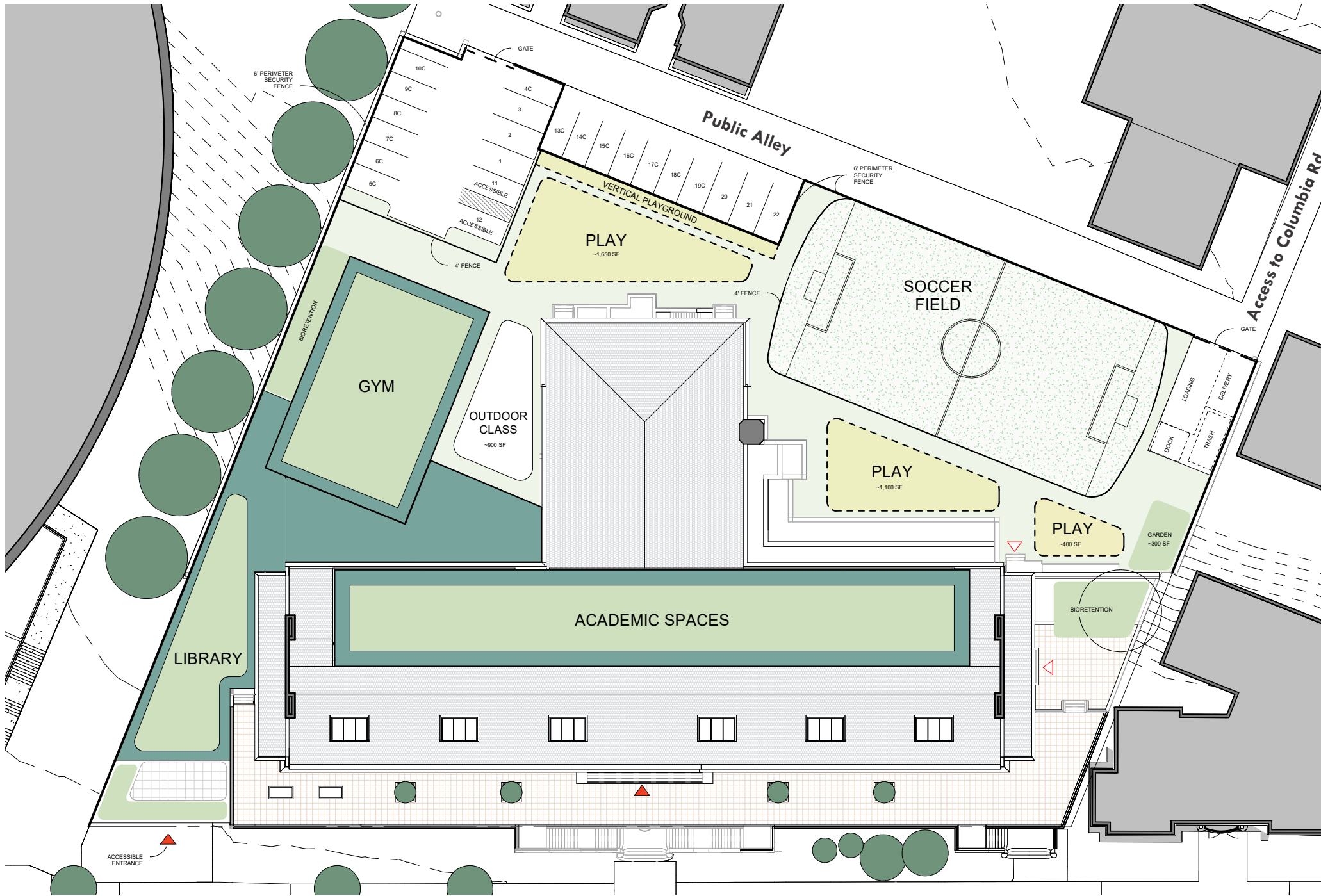
ELEMENTARY SCHOOL



MIDDLE SCHOOL

2 PROGRAM DISTRIBUTION





VERTICAL PLAYGROUND



PLAYFIELD



OUTDOOR HANGOUT SPACE

2 THE STACKS: SITE PLAN

19th St, NW



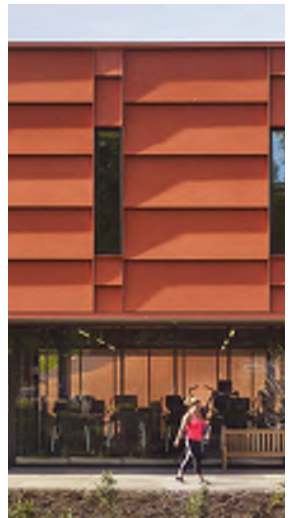




## 2 THE STACKS: PHYSICAL MODEL







2 PRECEDENTS

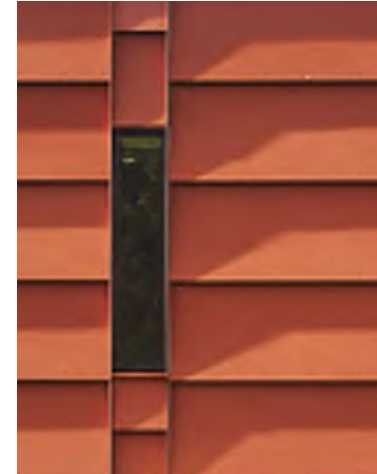




EXISTING



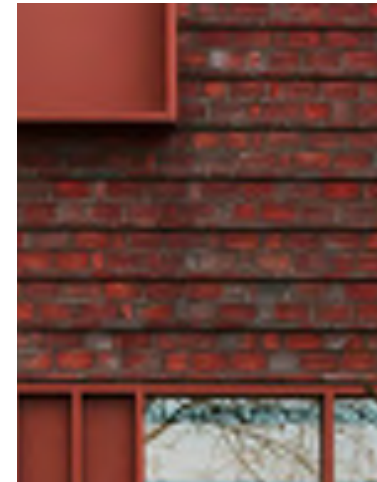
PROPOSED



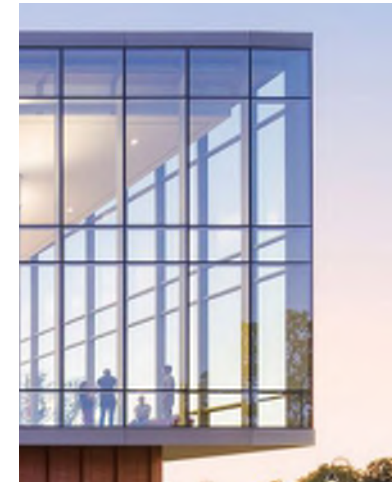
CEMENTITIOUS PANEL



PRE-PATINATED COPPER



BRICK

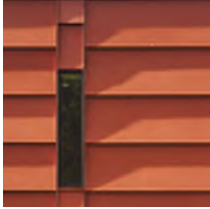


GLASS

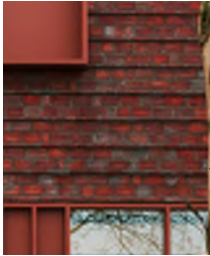
## 2 PROPOSED MATERIALS



GLASS



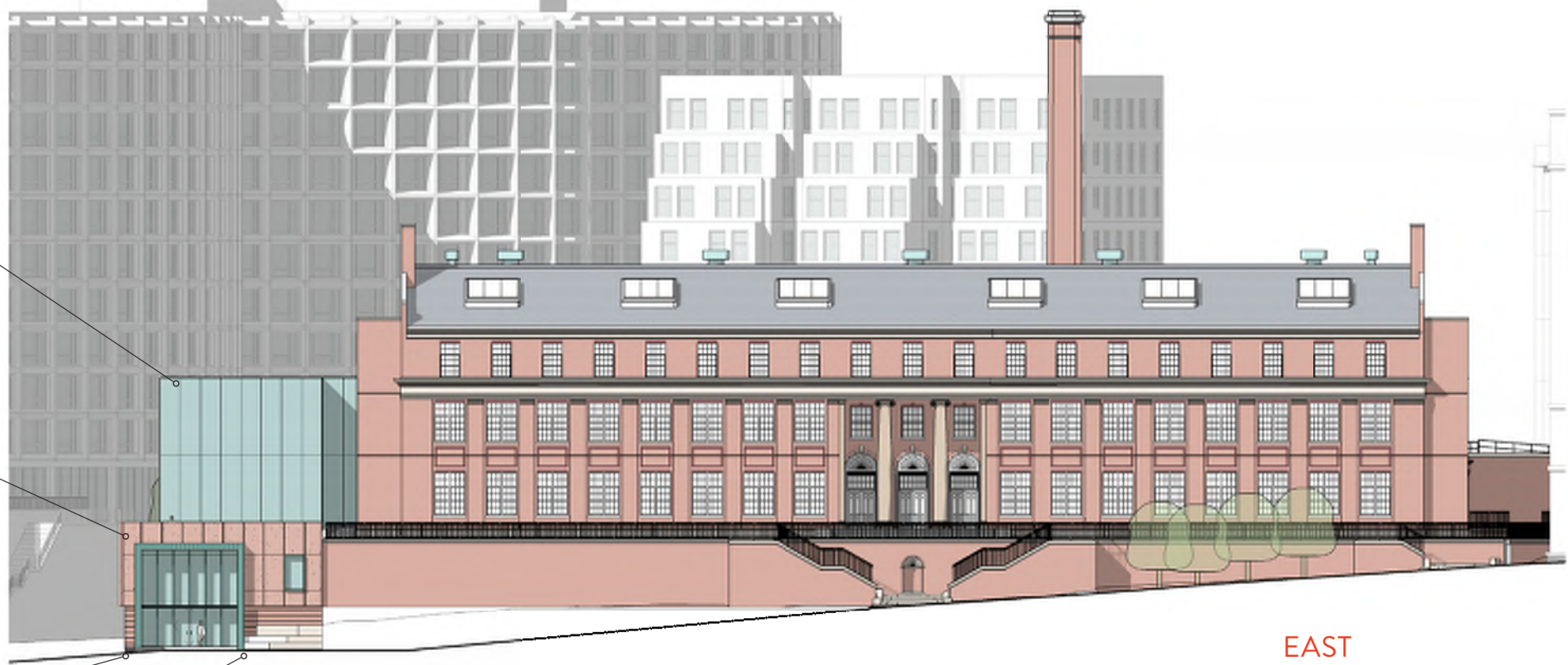
CEMENTITIOUS  
PANEL



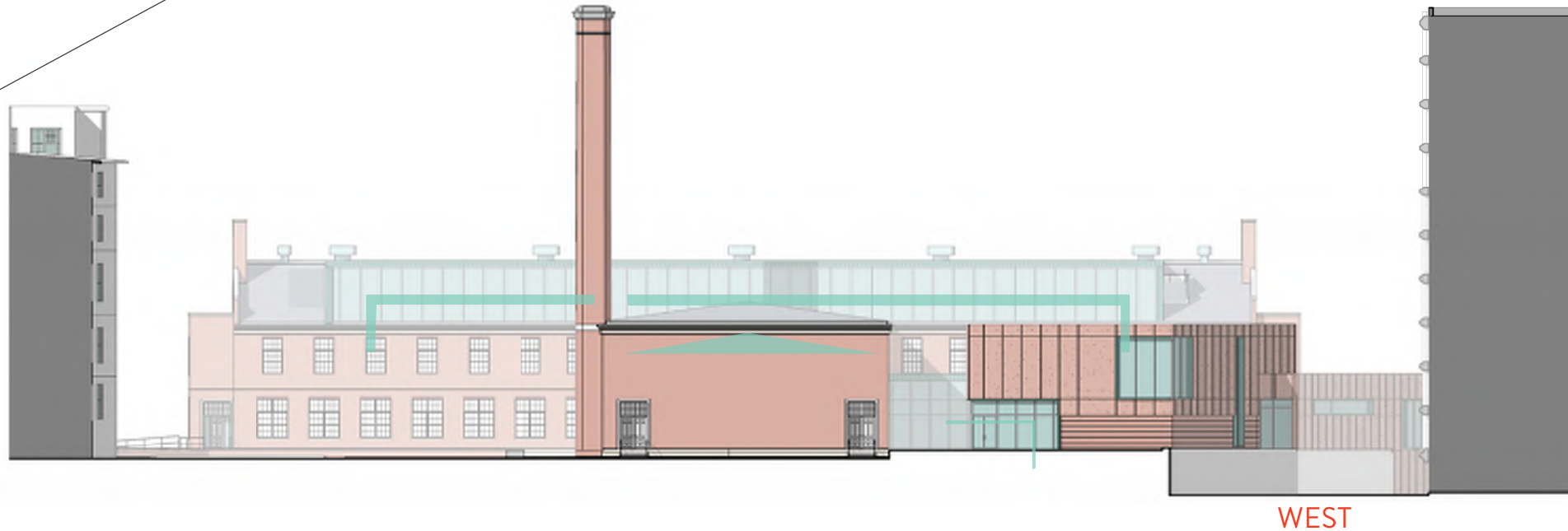
BRICK



PRE-PATINATED  
COPPER



EAST



WEST

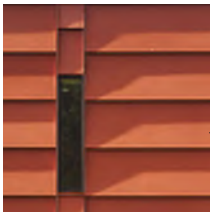
## 2 THE STACKS: ELEVATIONS



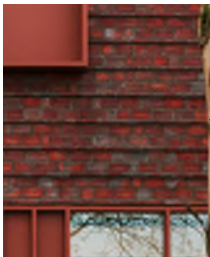




GLASS



CEMENTITIOUS  
PANEL



BRICK



PRE-PATINATED  
COPPER



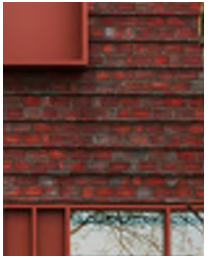
SOUTH

## 2 THE STACKS: ELEVATIONS





CEMENTITIOUS  
PANEL



BRICK



GLASS



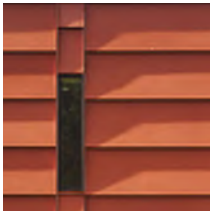
PRE-PATINATED  
COPPER



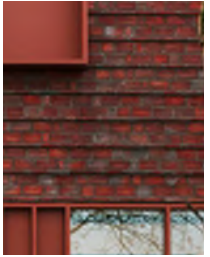
## 2 THE STACKS: VIGNETTE







CEMENTITIOUS  
PANEL



BRICK



GLASS



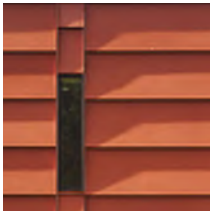
PRE-PATINATED  
COPPER



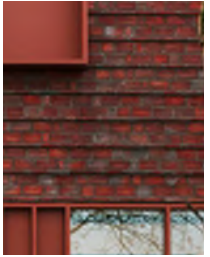
## 2 THE STACKS: VIGNETTE







CEMENTITIOUS  
PANEL



BRICK



GLASS



PRE-PATINATED  
COPPER



## 2 THE STACKS: VIGNETTE







VIEW FROM SOUTH ENTRANCE



VIEW OF CURRENT PLAYGROUND AND SPORTS FIELD



VIEW OF CURRENT PARKING LAYOUT



VIEW FROM NORTH ENTRANCE



VIEW FROM VERANDA



VIEW FROM 19TH ST. NW

LANDSCAPE : EXISTING SITE CONDITIONS



LEGEND:

ENTRYWAYS



BIORETENTION



GREEN ROOF



PROGRAMMED SPACE



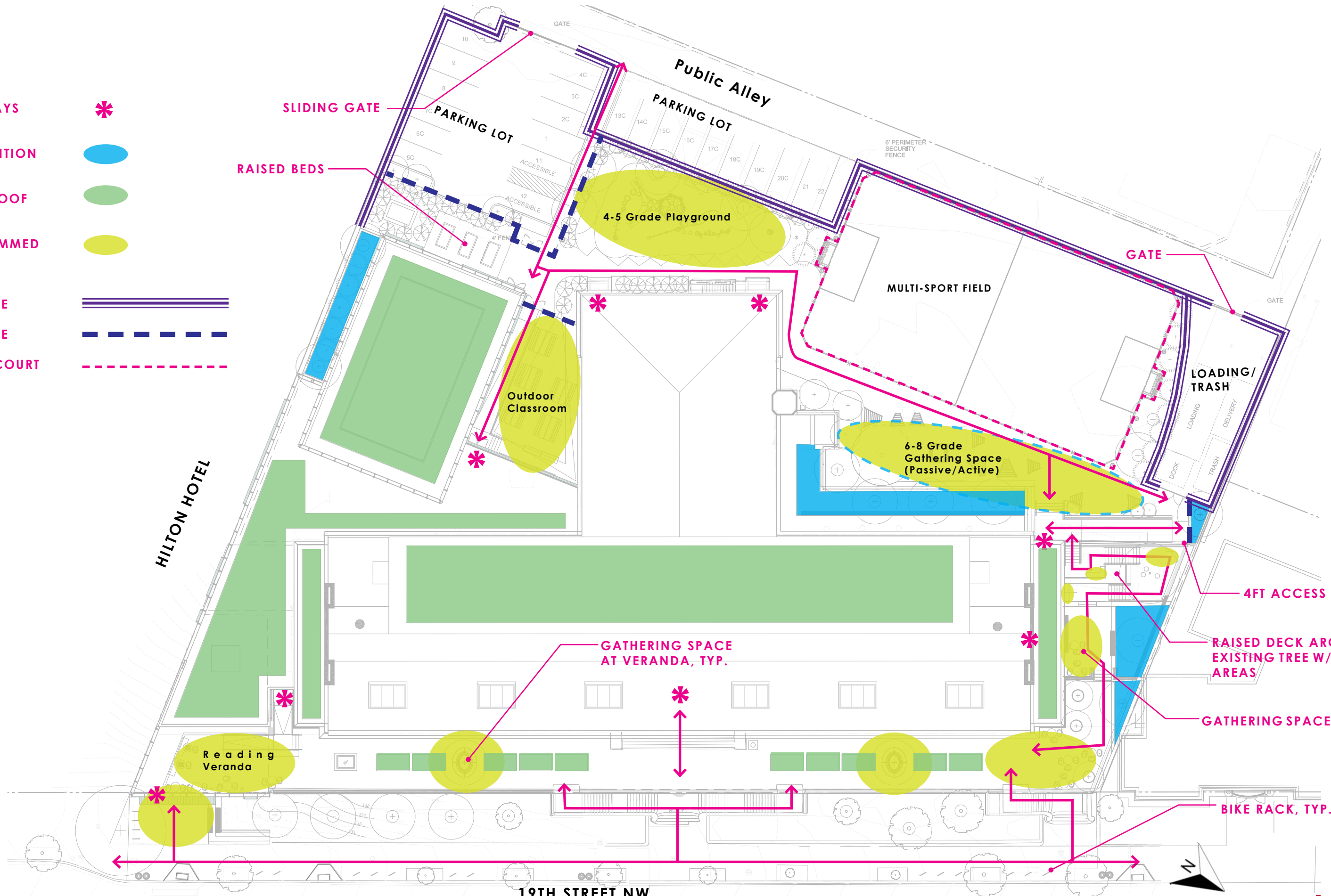
6FT FENCE



4FT FENCE



SPORTS COURT FENCE



SLIDING GATE

RAISED BEDS

4-5 Grade Playground

Outdoor Classroom

MULTI-SPORT FIELD

6-8 Grade Gathering Space (Passive/Active)

LOADING/TRASH

HILTON HOTEL

GATHERING SPACE AT VERANDA, TYP.

4FT ACCESS GATE

RAISED DECK AROUND EXISTING TREE W/ SEATING AREAS

GATHERING SPACES

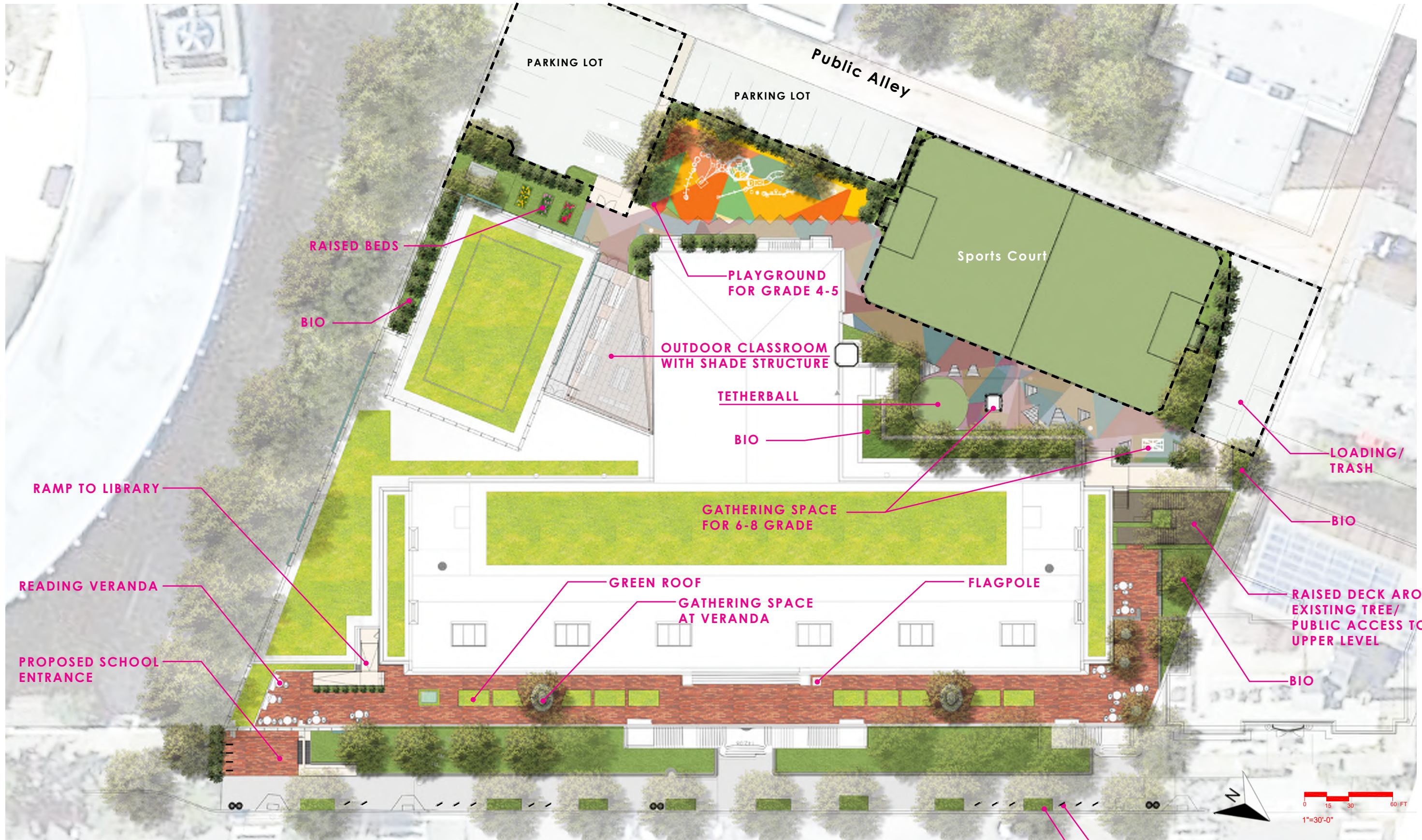
Reading Veranda

BIKE RACK, TYP.

19TH STREET NW

LANDSCAPE : PROGRAMMING & CIRCULATION

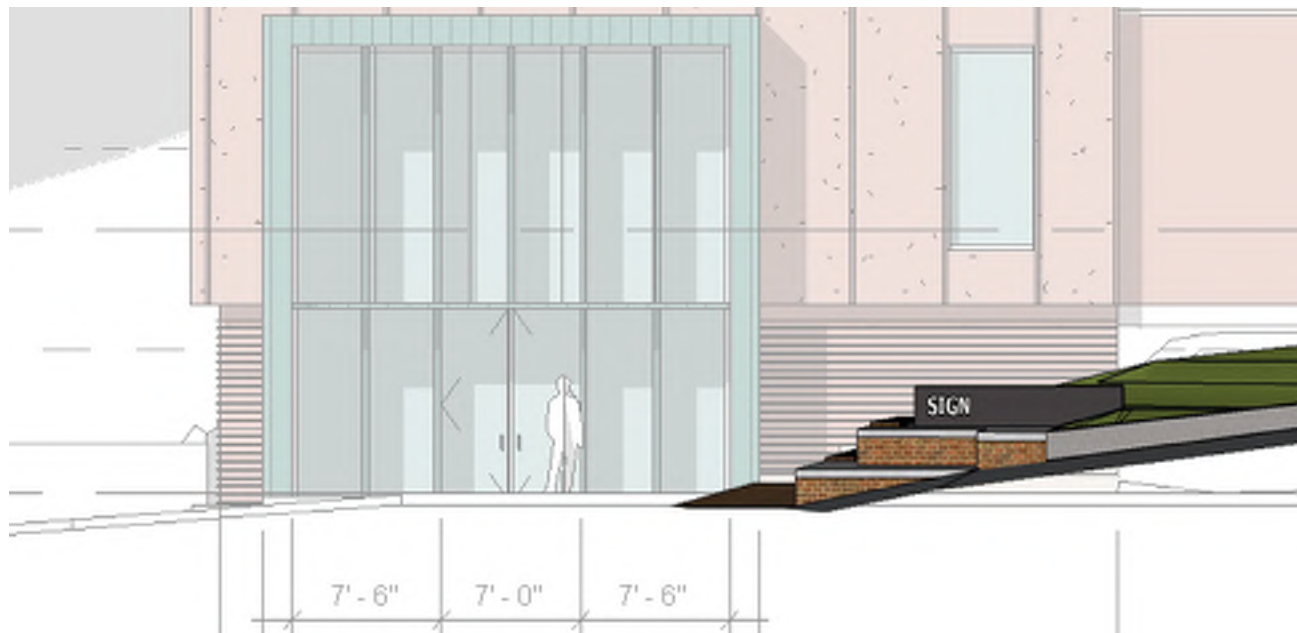
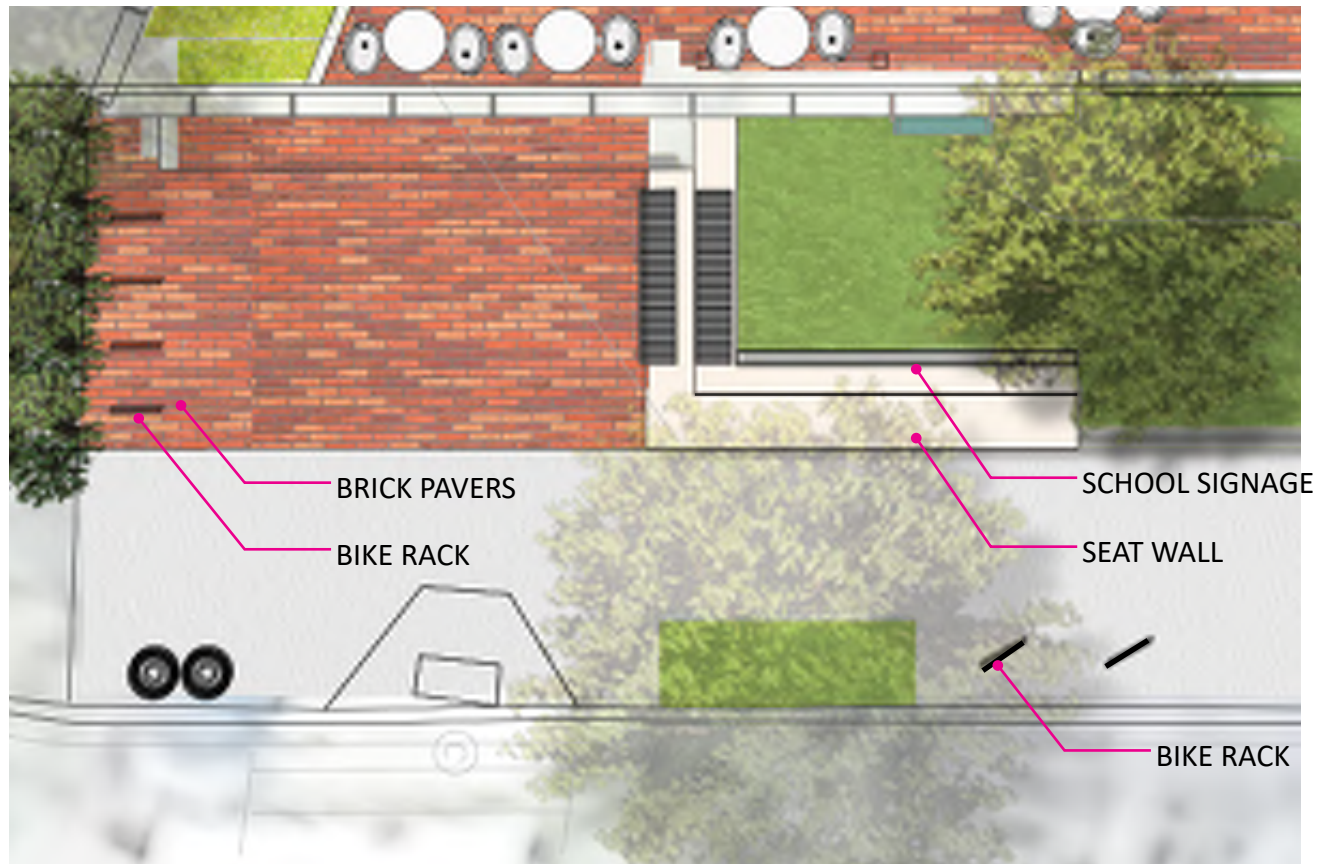




LANDSCAPE : OVERALL SITE PLAN

PROPOSED BIKE RACKS, TYP.  
WIDENED TREE BOXES



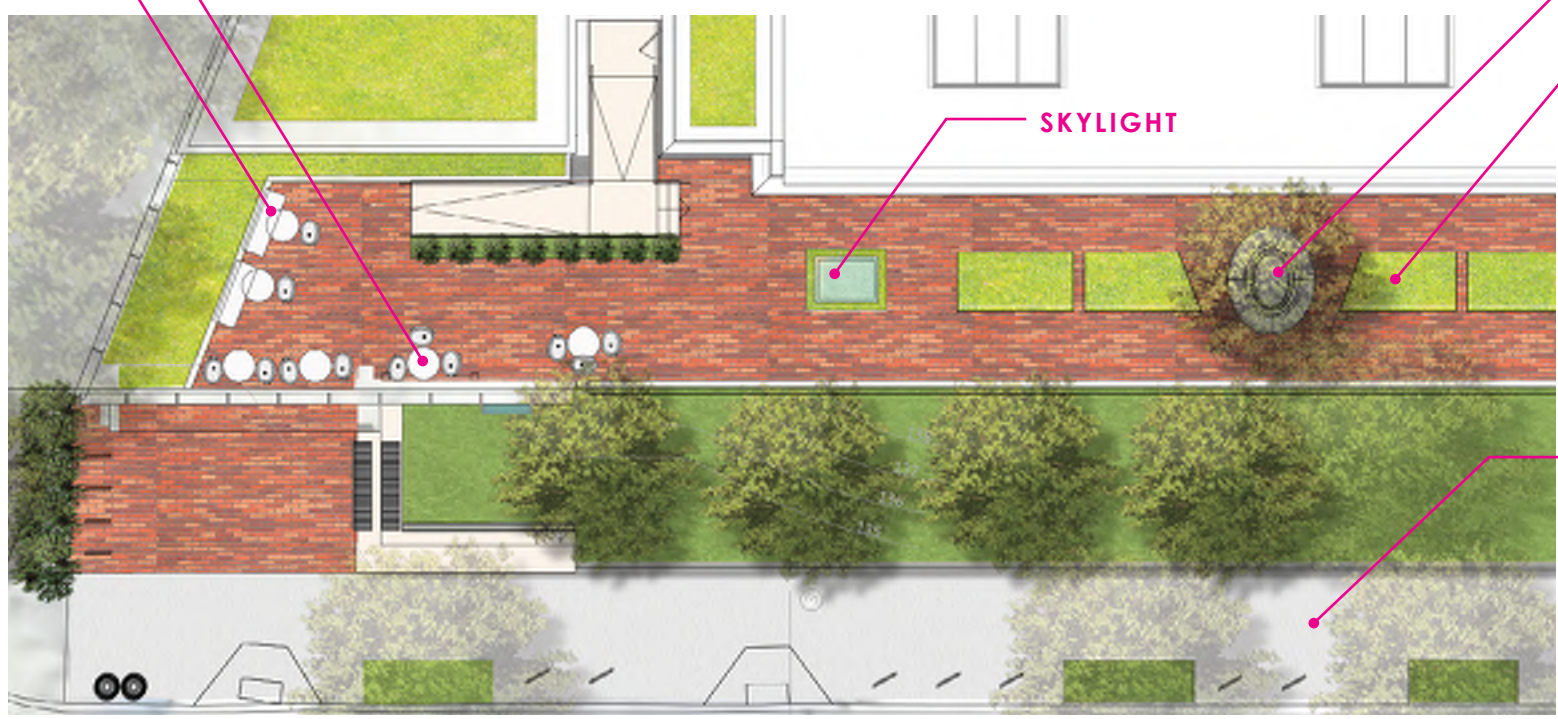


LANDSCAPE : PROPOSED SCHOOL ENTRANCE



TABLES/CHAIRS

BENCHES WITH CHESS TABLES

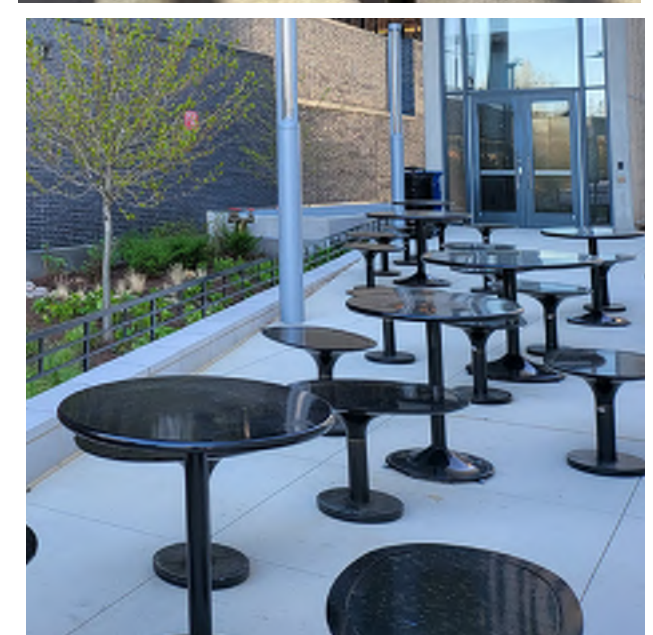


SKYLIGHT

RAISED PLANTER WITH SEATING

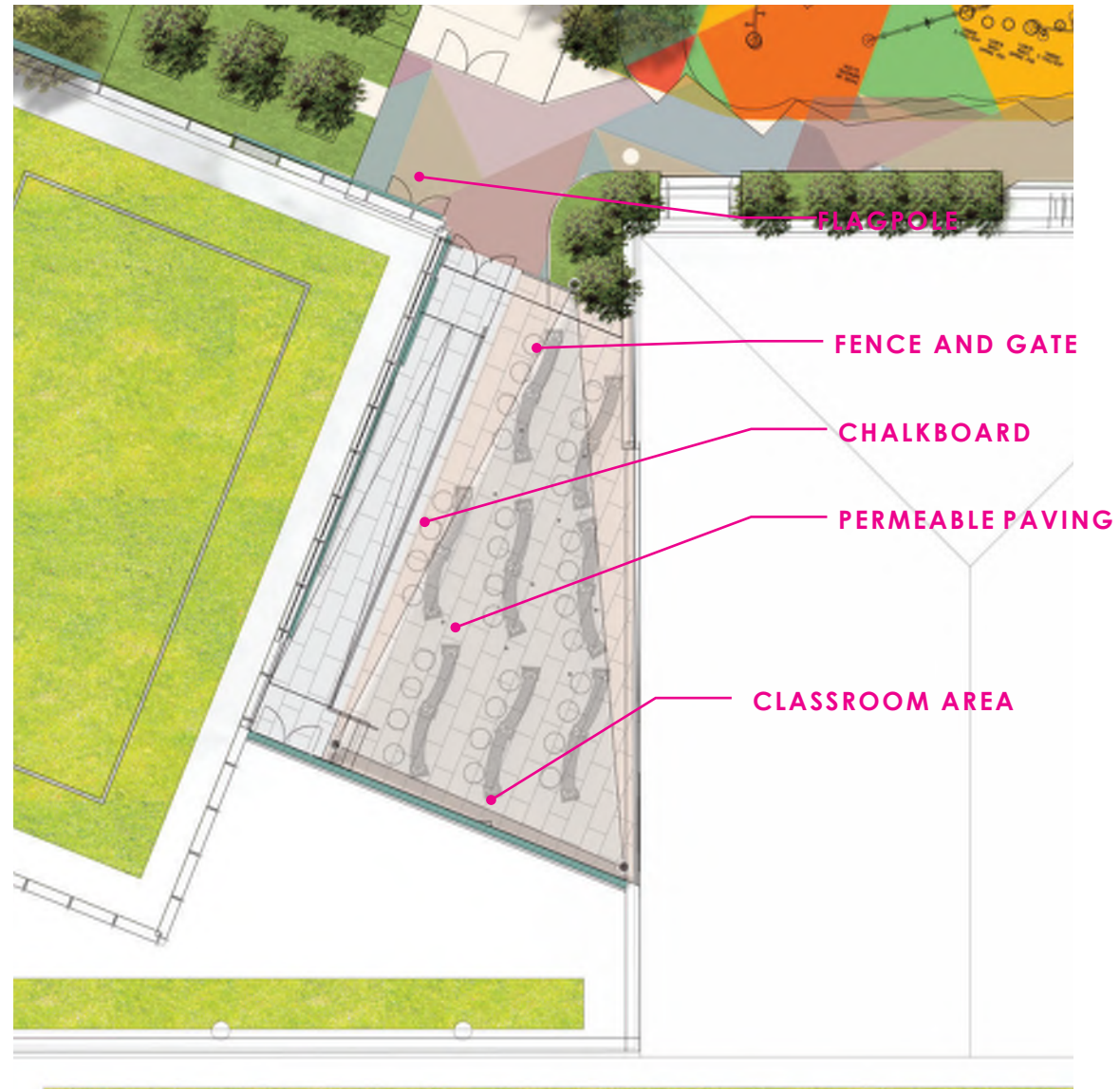
GREEN ROOF

EXISTING SIDEWALK



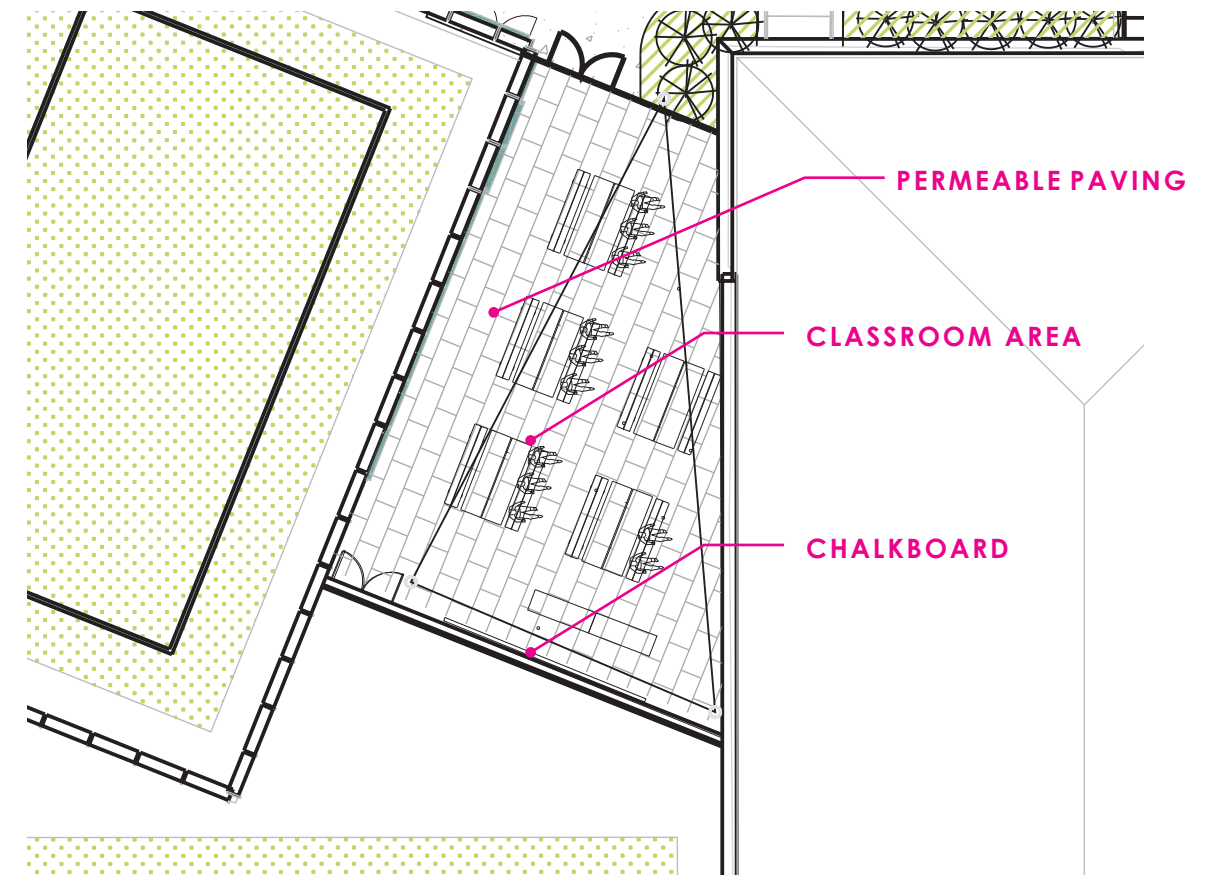
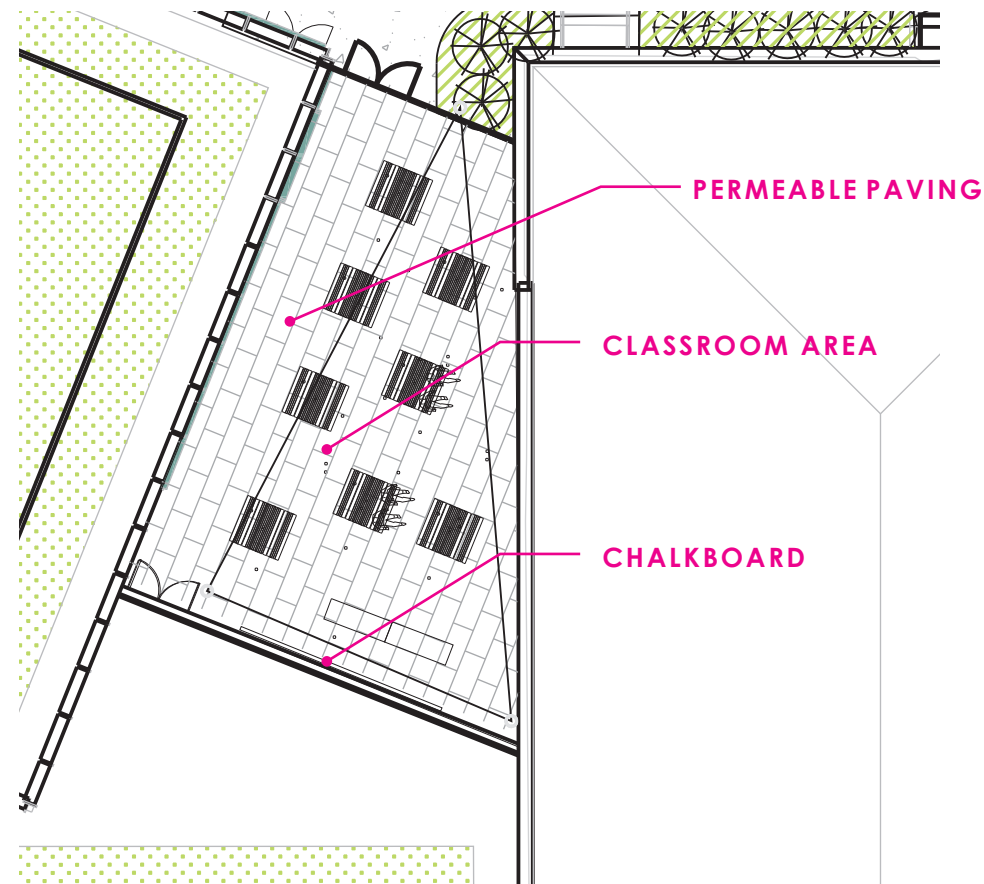
LANDSCAPE : VERANDA





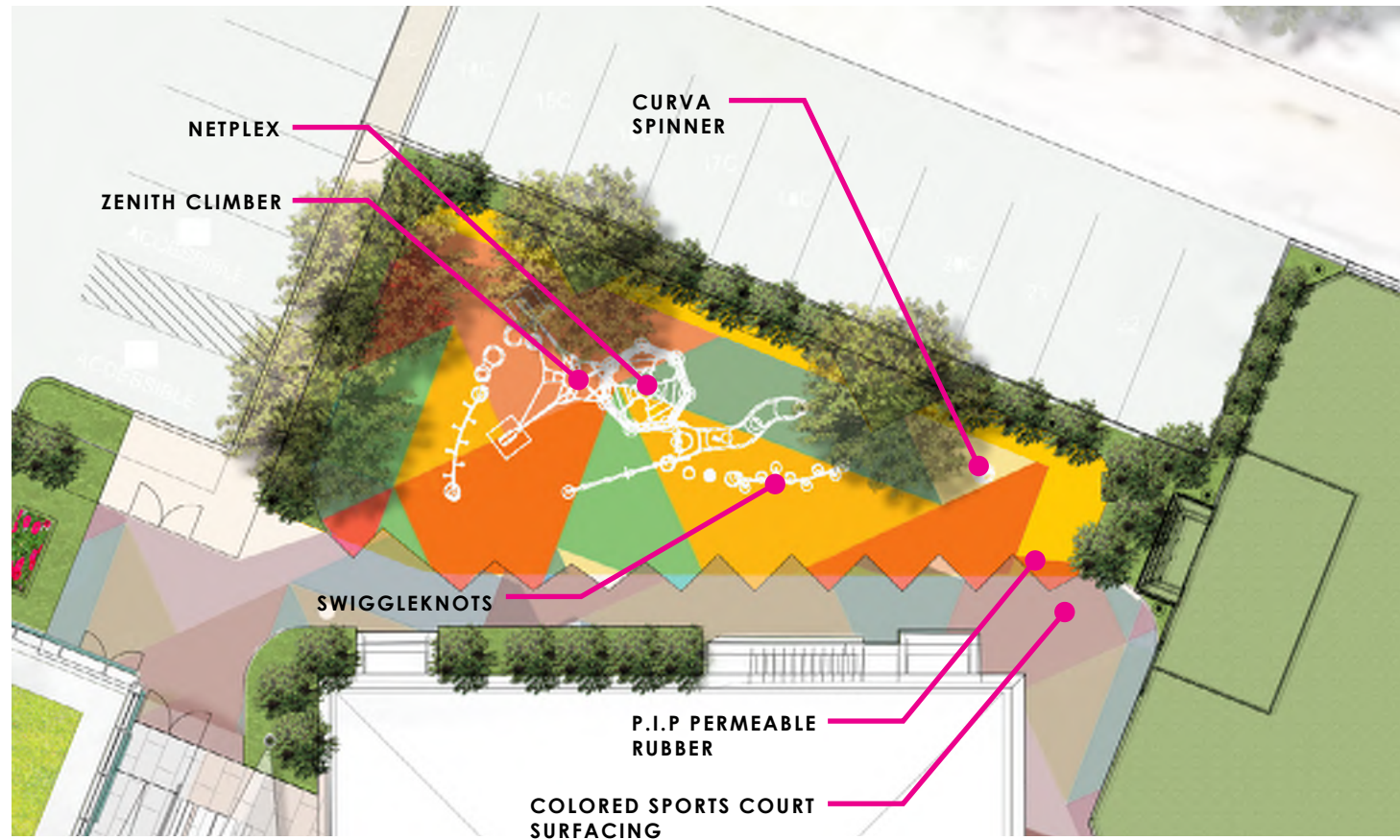
LANDSCAPE : ENLARGEMENT C - OUTDOOR CLASSROOM (OPTION 1)





LANDSCAPE : ENLARGEMENT C - OUTDOOR CLASSROOM (OPTION 2)





NETPLEX



SWIGGLEKNOTS



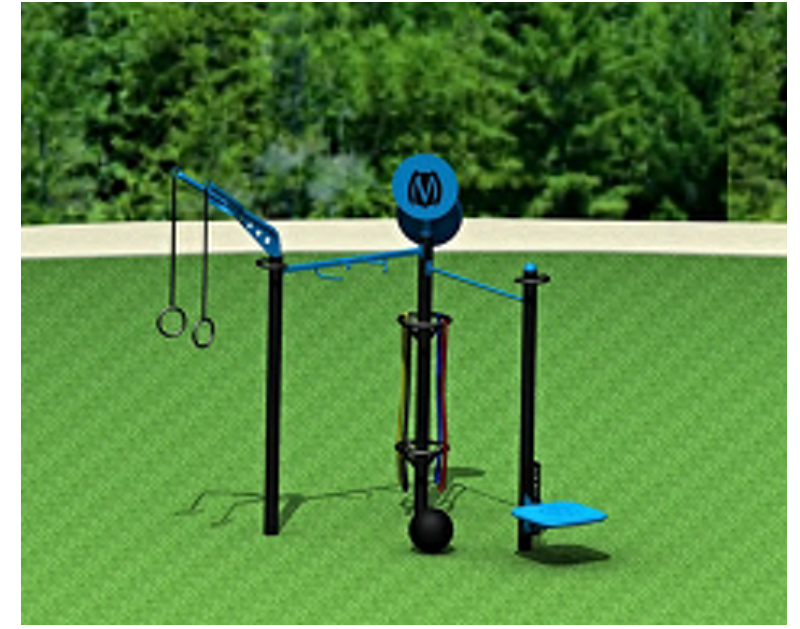
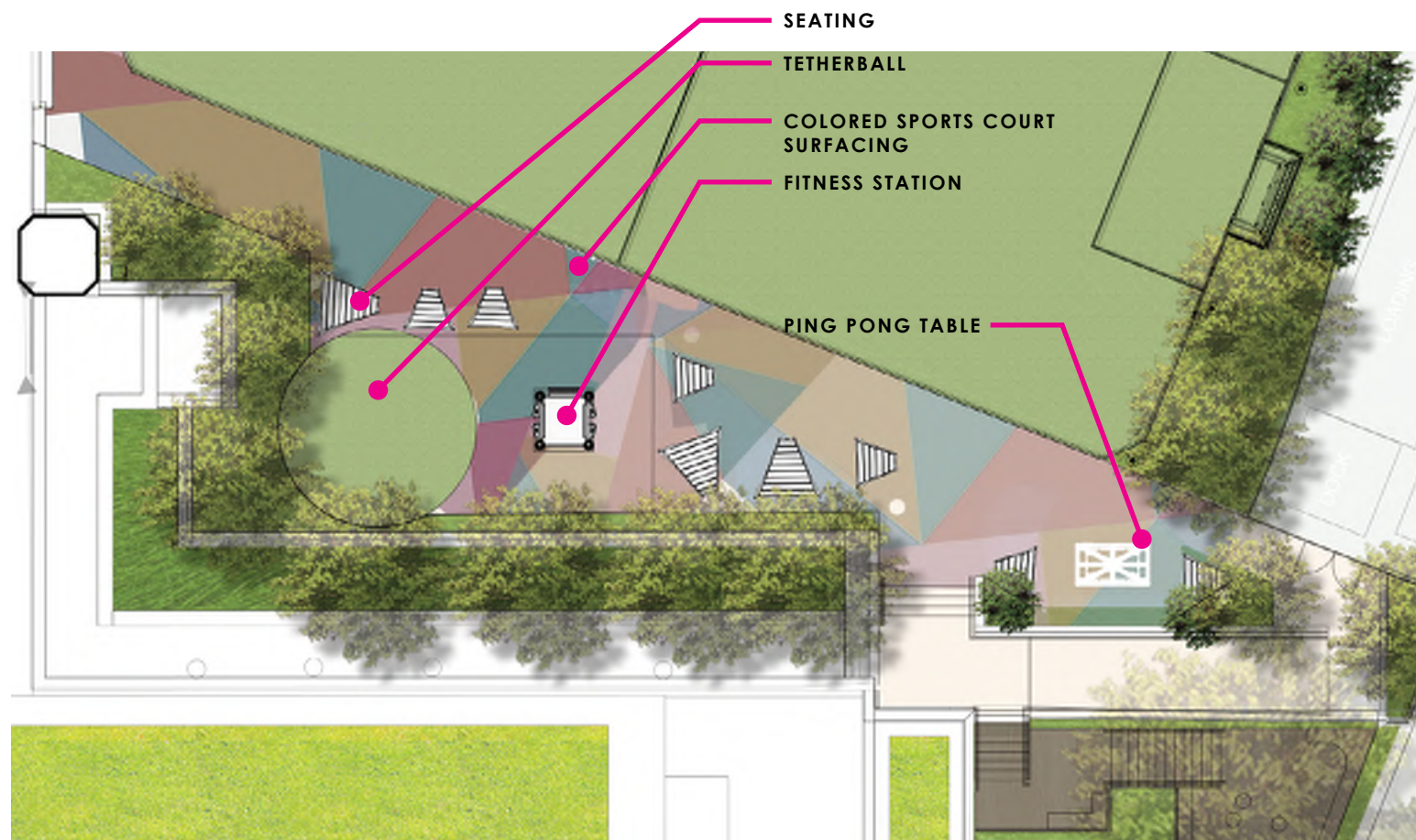
ZENITH CLIMBER



CURVA SPINNER

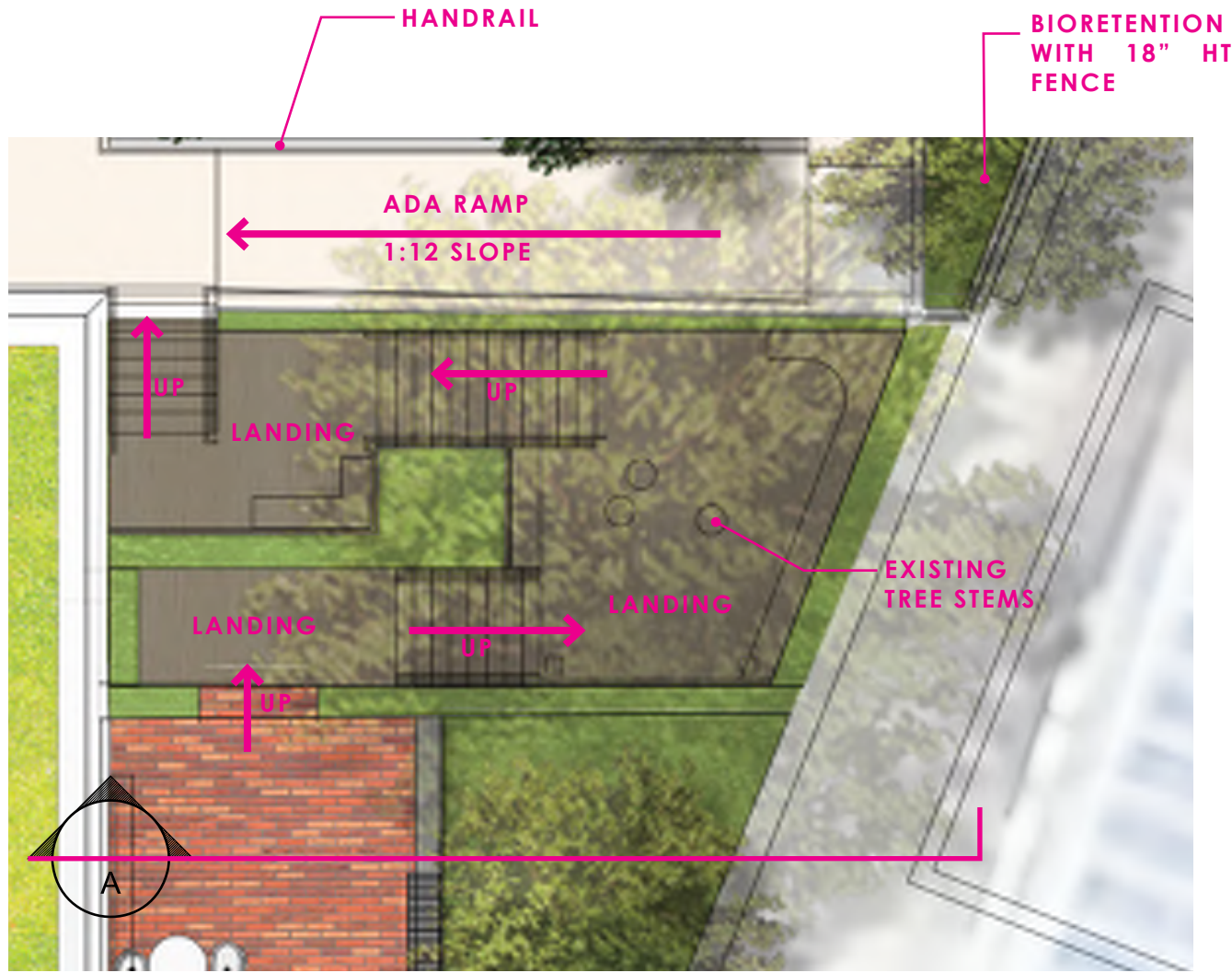
LANDSCAPE : 4-5 GRADE PLAYGROUND



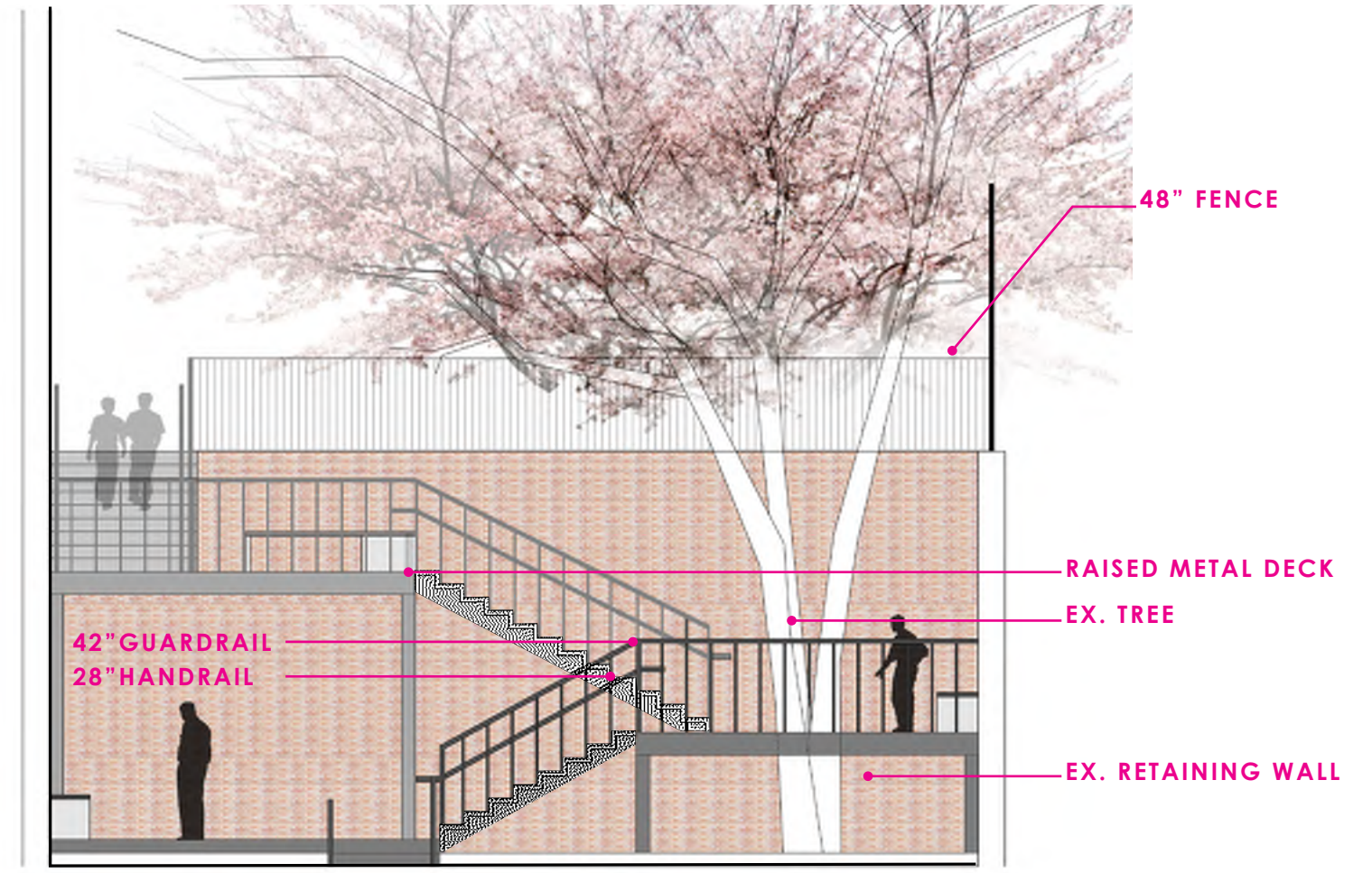


LANDSCAPE : 6-8 GRADE GATHERING SPACE

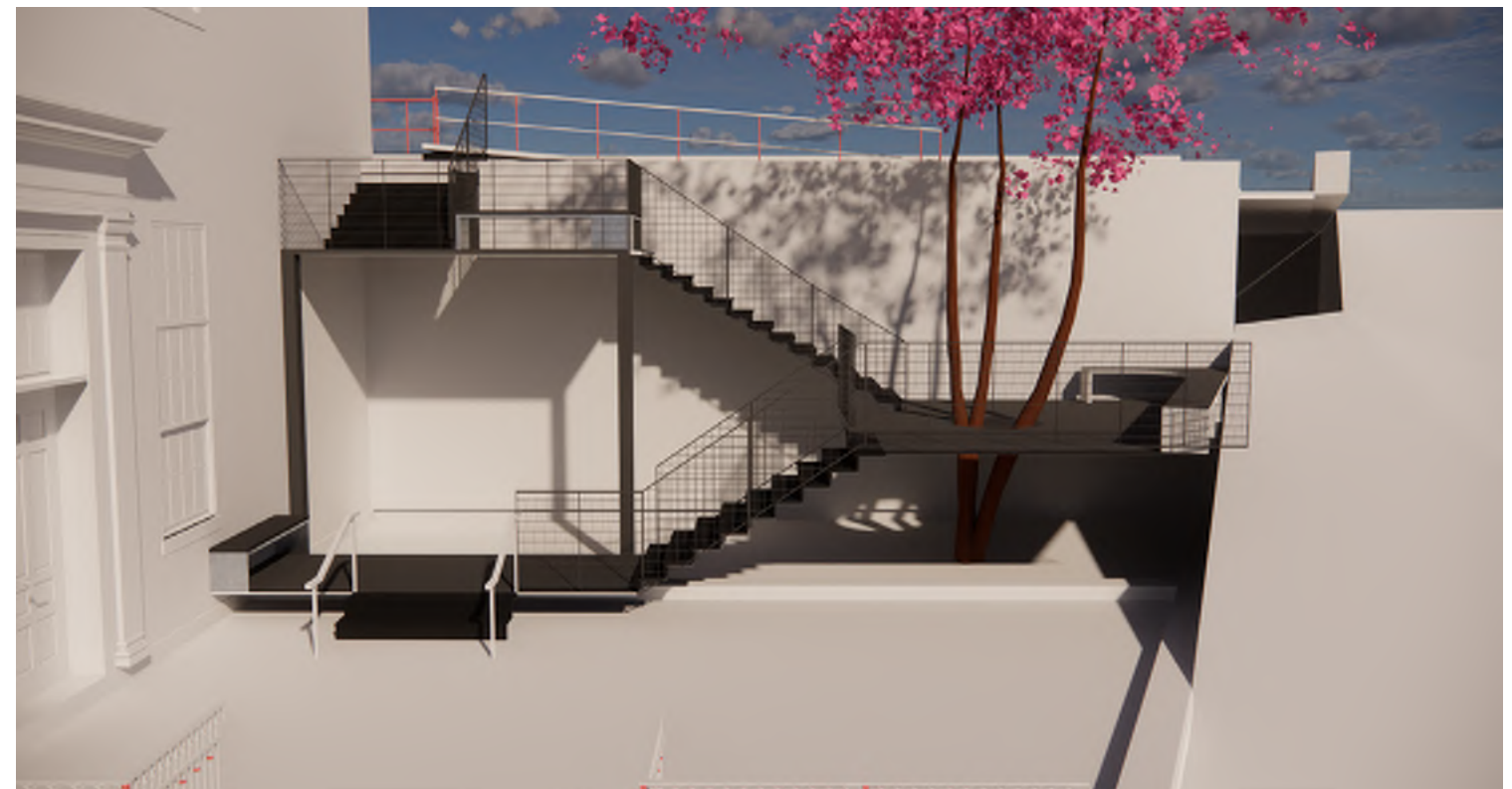




1 SITE PLAN

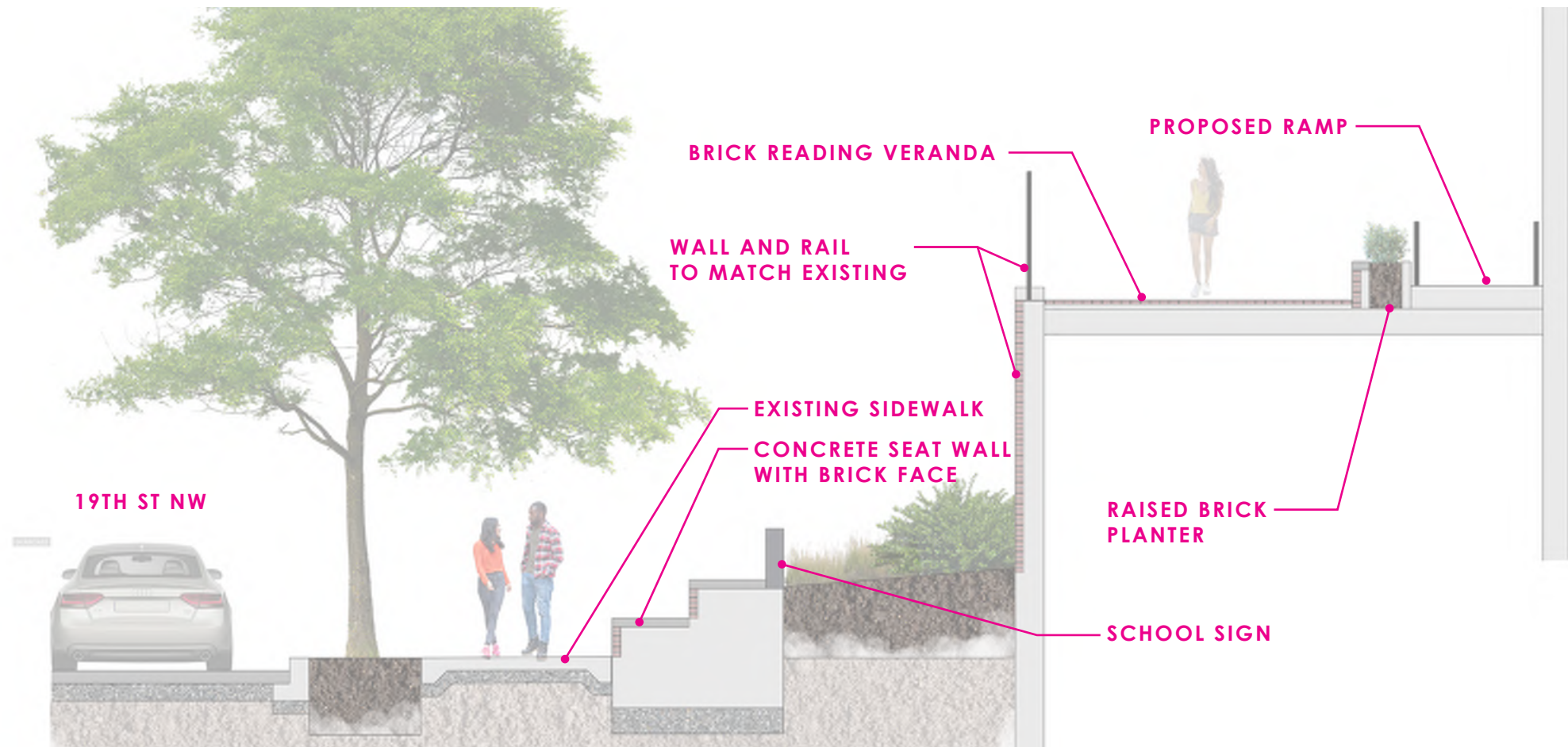


2 SECTION A  
SCALE : 1/8" = 1'-0"

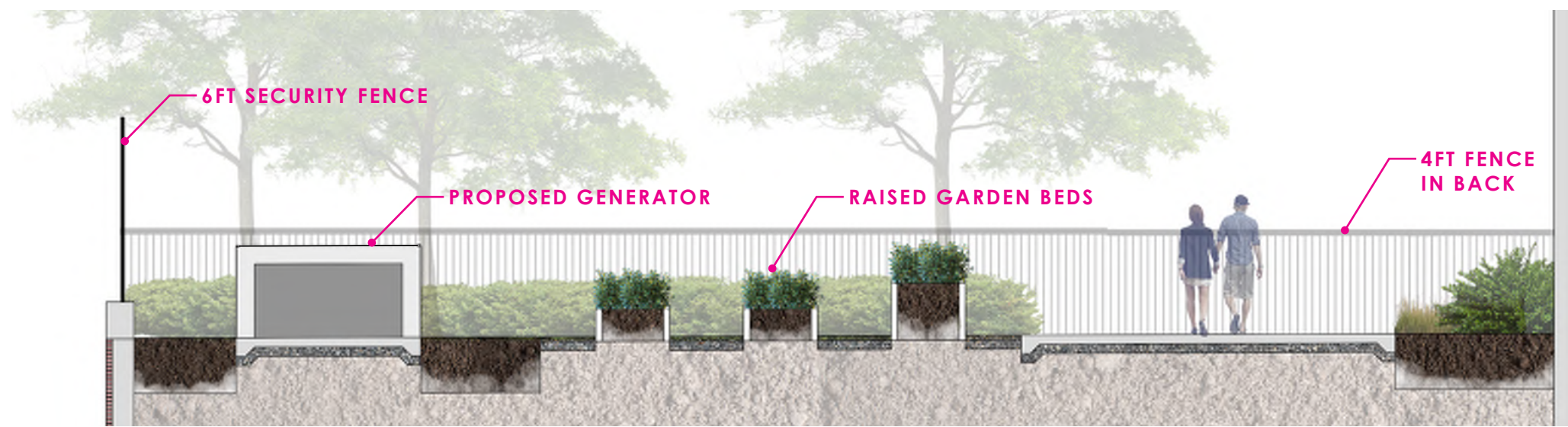
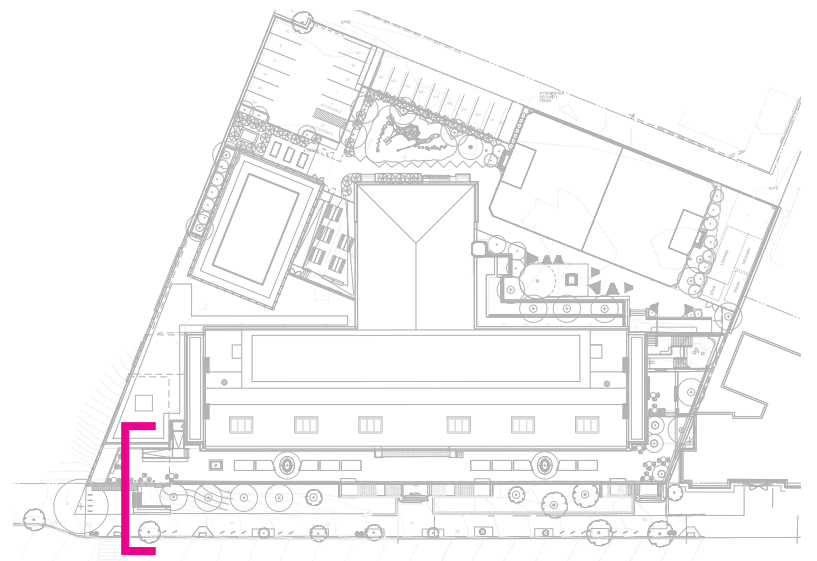


LANDSCAPE : RAISED DECK AROUND EXISTING TREE

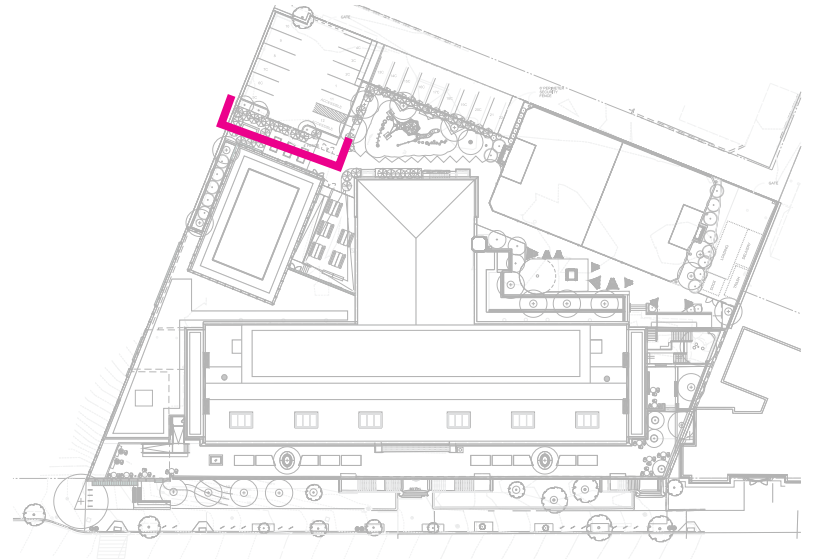




PROPOSED BUILDING

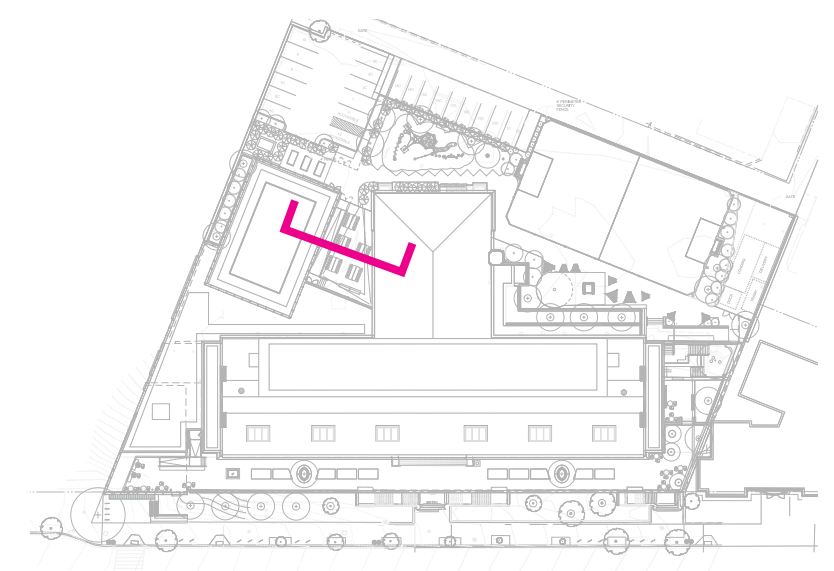
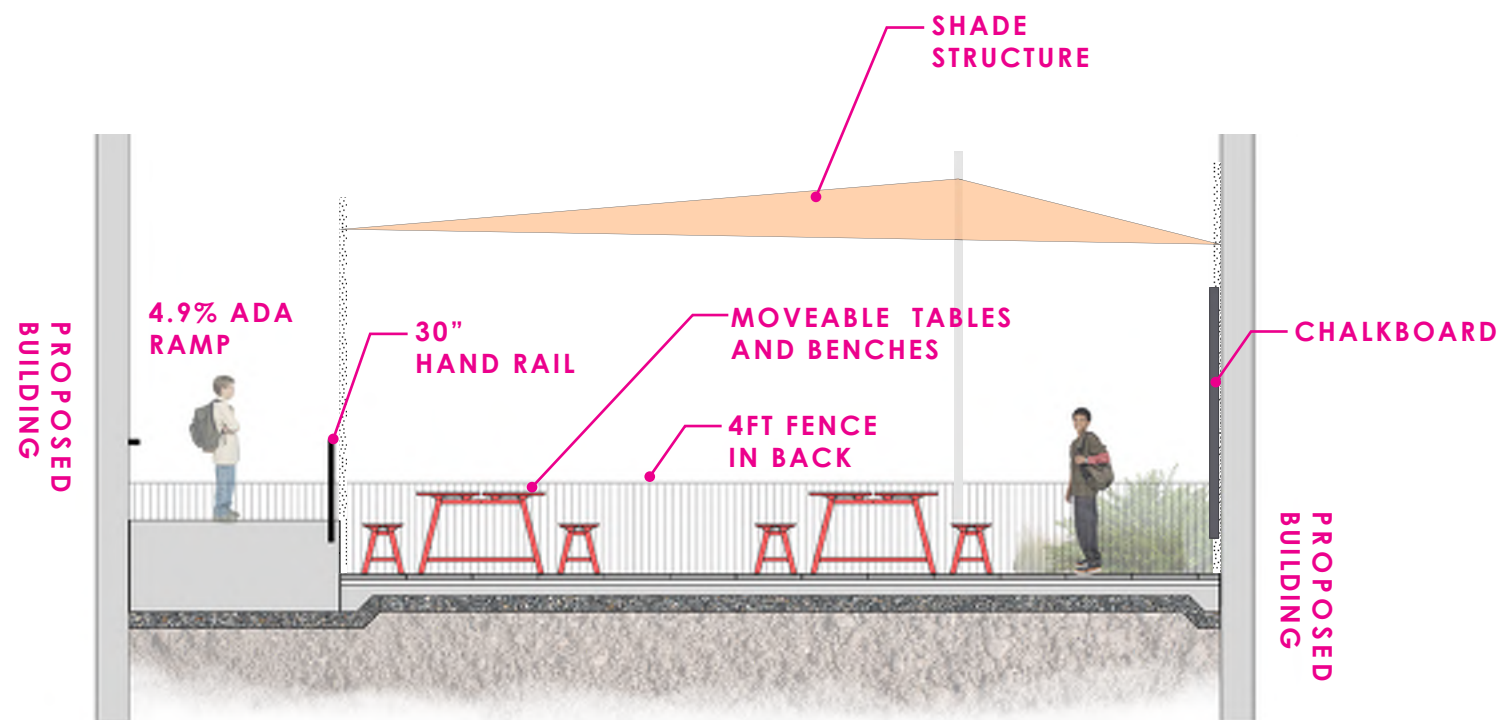


PROPOSED BUILDING



LANDSCAPE : SECTIONS









**PERMEABLE PAVING**



**SYNTHETIC TURF**



**PERMEABLE P.I.P RUBBER SURFACE**



**COLORED SPORTS COURT SURFACING**



**BRICK**

LANDSCAPE : PAVING REFERENCE

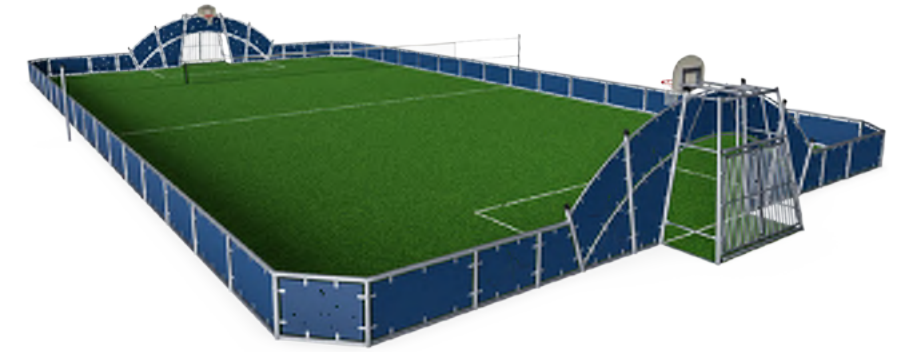




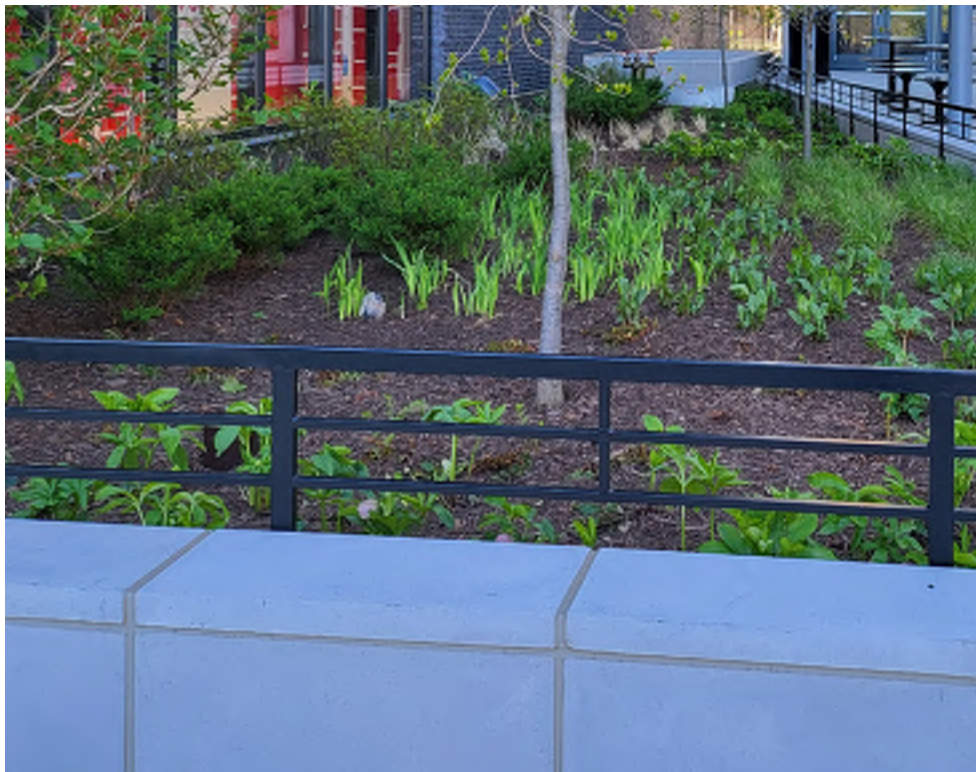
4 FT FENCE



6 FT PERIMETER FENCE



SPORTS COURT FENCE



BIORETENTION FENCE

LANDSCAPE : SITE FENCE REFERENCE IMAGES





*Carpinus caroliniana* - American Hornbeam



*Cercis canadensis* - Red Bud



*Prunus 'Kanzan'* - Japanese Flowering Cherry



*Ulmus americana* - American Elm 'New harmony'



*Clethra alnifolia* - Summersweet Clethra



*Cornus sericea* - Red Twig Dogwood



*Hydrangea quercifolia* - Oak Leaf Hydrangea



*Ilex verticillata* - Winterberry





*Carex pensylvanica* - Pennsylvania Sedge



*Echinacea purpurea* - Purple Coneflower



Green Roof Sedum



*Panicum virgatum* - Switch Grass



*Schizachyrium scoparium* - Little Blue Stem



*Tiarella cordifolia* - Foam Flower

LANDSCAPE : GROUNDCOVER AND GRASSES