

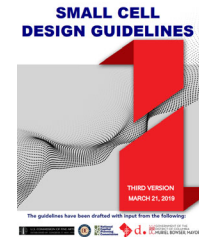
DISTRICT DEPARTMENT OF TRANSPORTATION

Small Cell Standalone Pole

Overview

- We are presenting to the Commission a new standalone pole to be used in accordance with the existing small cell guidelines.
 - This design was developed in consultation with staff from CFA, NCPC, SHPO and the Office of Planning.
- CFA September 2023 meeting summary
 - The commission endorsed the stand-alone pole design
 - Questions about Areas of Special Interest
 - Concerns over the scale of the pole base
 - Request for illustrations of small cell stand-alone poles and small cell on existing poles with the distancing requirements

Special Interest Areas



- As the nation's capital, Washington D.C. has important vistas and viewsheds that are part of the L'Enfant Plan;
- There are existing regulations intended to protect the vistas and viewsheds:
 - 2.6.7. Shipstead-Luce Act
 - 2.6.8. Historic Landmark and Historic District Protection Act of 1978
 - 2.6.11. Old Georgetown Act
- In harmony with the intent of these regulations, and stakeholder comments, restrictions were placed on the number of small cells in Areas of Special Interest;
 - Minimizing the impact on the character of designated historic districts and landmarks , monuments, memorials, and federal buildings and open spaces; and
 - Minimizing pole clutter along these corridors where there are typically twin-20 or Washington Globe lights

Pipe Tenon:

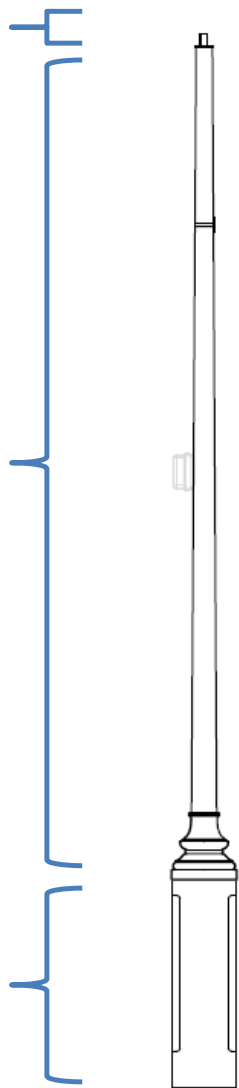
Height: 4"
Width: 2"

Pole Dimensions:

Height: 21'6"
Tapered width: 8" base
and 3.8" Top Cylinder

Base Dimensions:

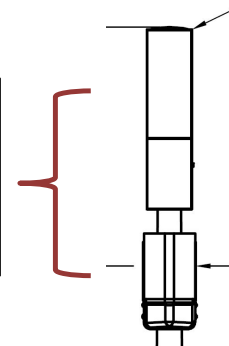
Height: 5'6"
Width: 20" Cylinder



Antennae Dimensions:

AT&T

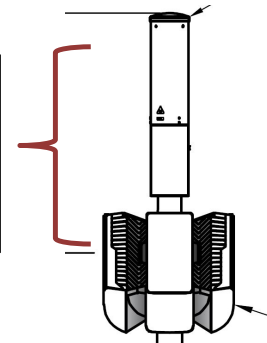
Height: 4'2"
Antennae: 2



Antennae Dimensions:

Verizon

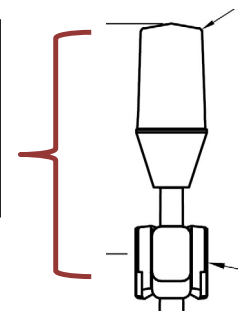
Height: 4'2"
Antennae: 3



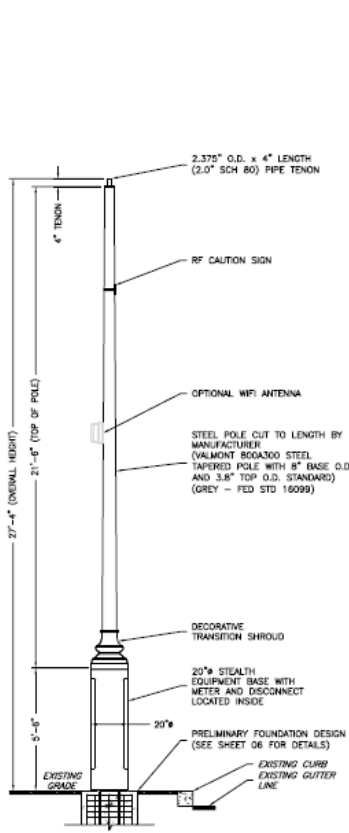
Antennae Dimensions:

Crown Castle

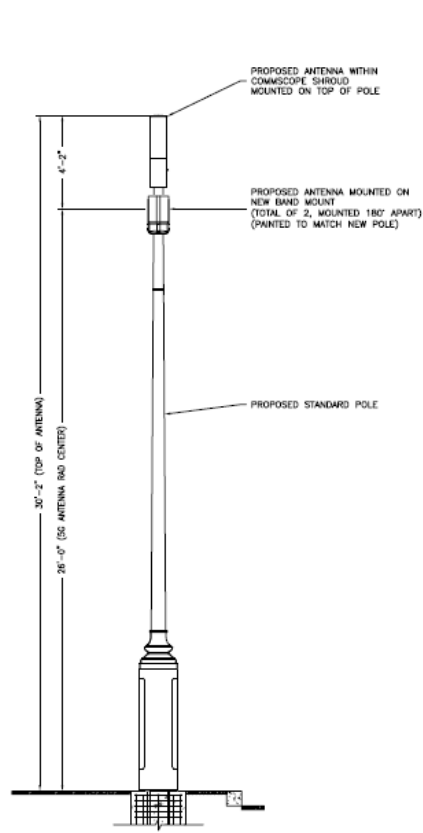
Height: 4'4"
Antennae: 3



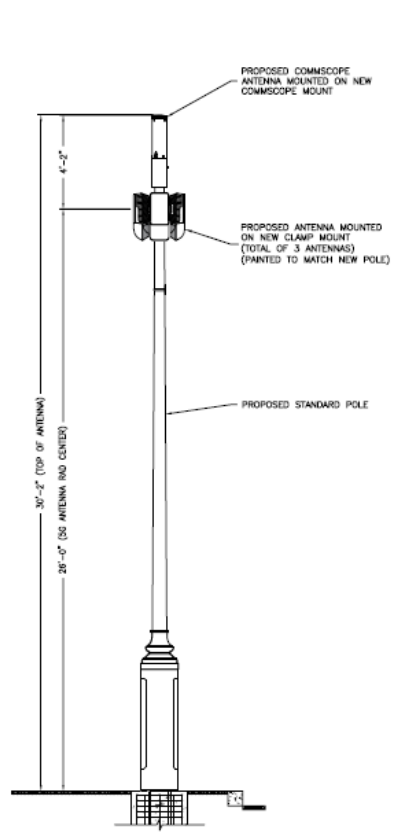
Proposed New Pole Plant



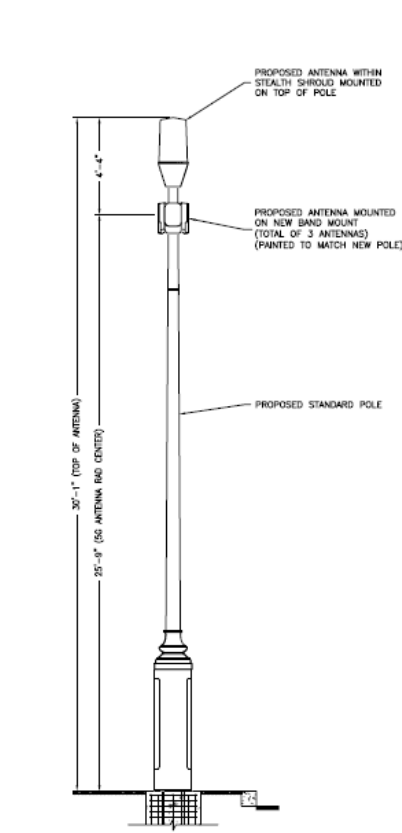
Standalone Pole



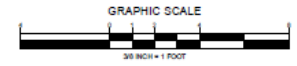
AT&T



Verizon



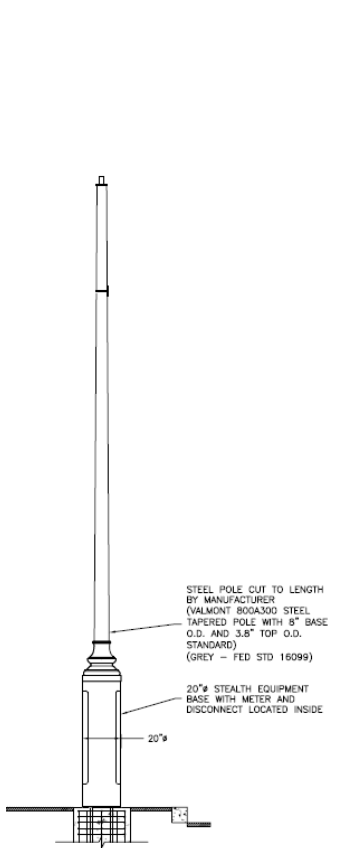
Crown Castle



Base Dimensions:
Height: 5'6"
Width: 20" Cylinder

Carrier	Pole Height
Without Equipment	27' 4"
AT&T	30' 2"
Verizon	30' 2"
Crown Castle	30' 1"

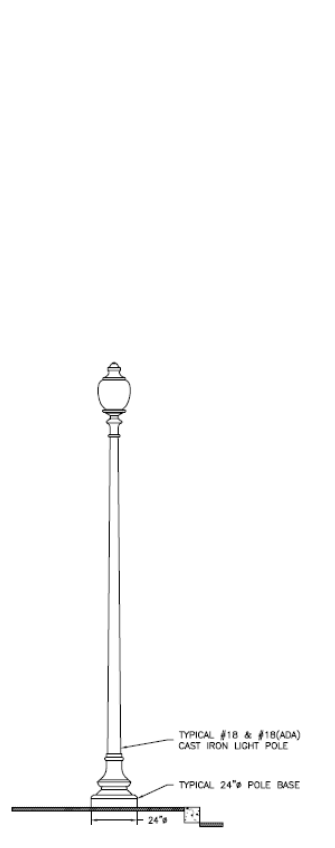
Proposed New Pole Plant- Pole Comparison



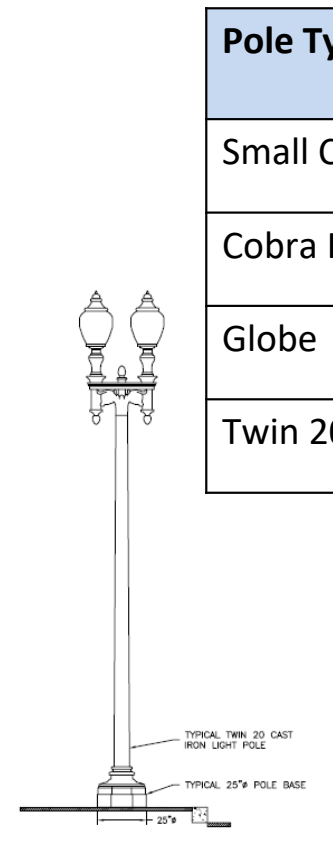
Standalone Pole



Cobra Head



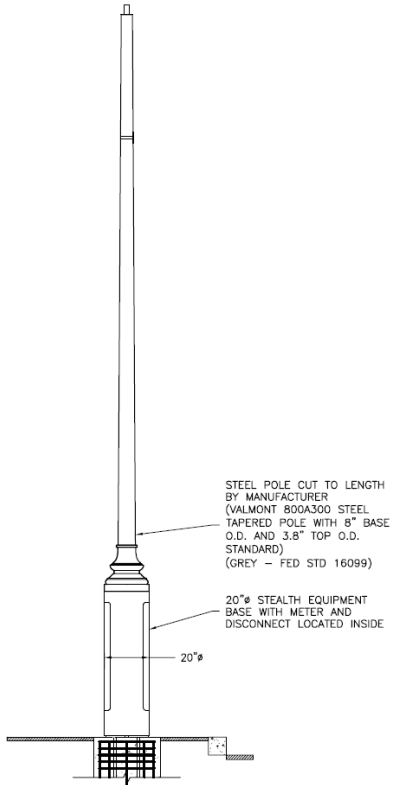
Globe



Twin 20

Pole Type	Base Width	Height
Small Cell	20"	27'4"
Cobra Head	16"	30'
Globe	24"	14'-18'
Twin 20	25"	20'

Size comparisons



Base height: 66"
 Diameter: 20"
 Base area: 314.16 sq. inches



Height: 48"
 Diameter: 25"
 Base area: 490.9 sq. inches



Height: 74"
 Width: 34"

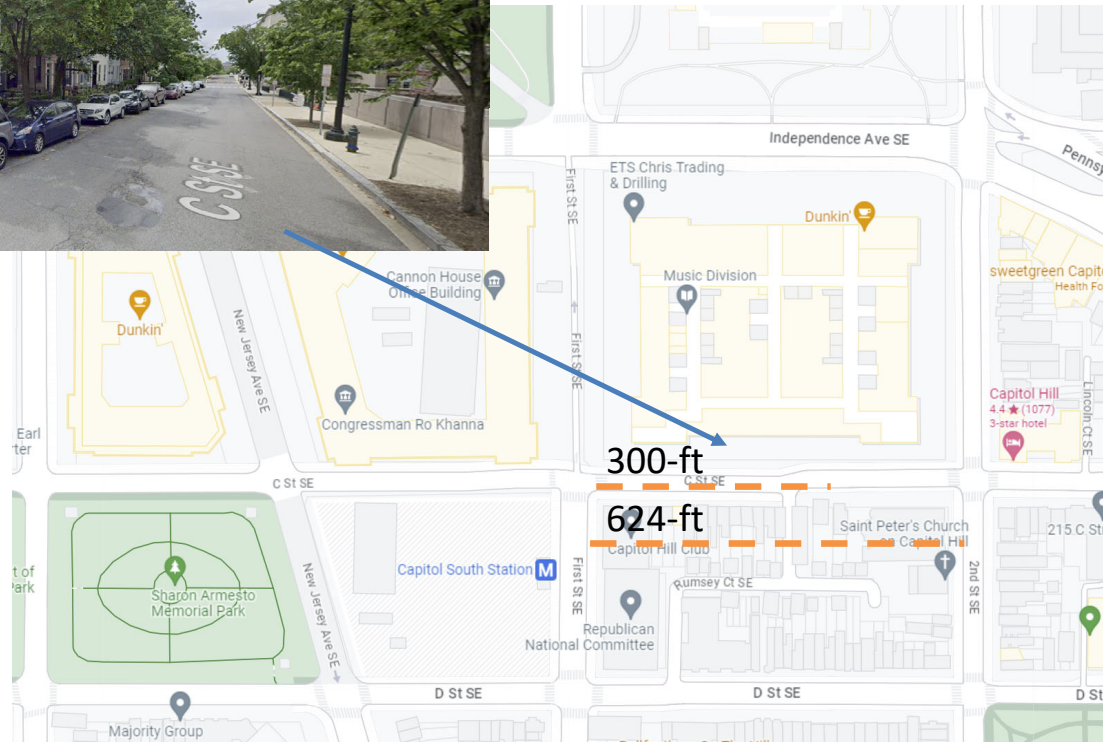
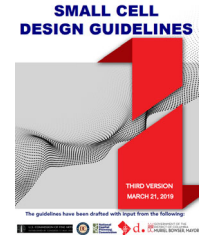


Height 86"
 Width: 40"

Base Rendering



Permissible Spacing and Frequency of Installations



Blockface Length Intervals ¹	Outside Areas of Special Interest		Inside Areas of Special Interest		Limit per Carrier per Block ⁴
	Number of Small Cell Facilities Permitted per Blockface ²	Minimum Distance between Facilities on same Blockface ³	Number of Small Cell Facilities Permitted per Blockface	Minimum Distance between Facilities on same Blockface	
0'-150'	1	N/A	1	N/A	1
151'-300'	1	N/A	1	N/A	1
301'-450'	2	60'	1	N/A	1
451'-600'	2	60'	2	90'	1
601'-750'	3	60'	2	105'	2
Over 750'	3	60'	2	120'	2

¹Block lengths should be measured along the edge of curb between the edge line extended of adjacent intersecting streets.

²This is inclusive of all types of installations and regardless of carrier.

³In other words, the minimum distance between two facilities sharing the same side of the block. Distance should be measured in a linear fashion along the edge of curb between the two facilities' center points.

⁴A block is defined as two opposing blockfaces.



Site Name: Small Cell Standalone Pole Design
 Wireless Communication Facility
 38.9142, -77.0298
 Washington, DC 20009

Photograph Information:
 View 1-18th St NW
 Crown Pole Top Design
 View from the West
 Showing the Existing Site



Existing



Site Name: Small Cell Standalone Pole Design
 Wireless Communication Facility
 38.9142, -77.0298
 Washington, DC 20009

Photograph Information:
 View 1-18th St NW
 Crown Pole Top Design
 View from the West
 Showing the Proposed Site



Proposed




Existing

Proposed

Site Name: Small Cell Standalone Pole Design
 Wireless Communication Facility
 38.9142, -77.0298
 Washington, DC 20009

Photograph Information:
 View: 1-13th St NW & S St NW
 Crown Pole Top Design
 View from the Southwest
[Showing the Existing Site](#)



Site Name: Small Cell Standalone Pole Design
 Wireless Communication Facility
 38.9142, -77.0298
 Washington, DC 20009

Photograph Information:
 View: 1-13th St NW & S St NW
 Crown Pole Top Design
 View from the Southwest
[Showing the Proposed Site](#)





Existing



Proposed



Existing



Proposed



Proposed



Proposed



District Department of Transportation

250 M St SE | Washington, DC 20003 | 202.673.6813