

DC PUBLIC LIBRARY SOUTHEAST NEIGHBORHOOD LIBRARY

CFA FINAL SUBMISSION
02 NOVEMBER 2023



1.1 PROJECT OVERVIEW

Southeast Neighborhood Library is an existing District of Columbia Public Library (DCPL) branch located at 403 7th Street SE in the Capitol Hill neighborhood. It occupies a triangular site bounded by 7th Street to the east, D Street to the north and South Carolina Avenue to the south. The existing 8,500 square foot building sits on a berm above the adjacent streets with the original public entry on 7th Street. The original topography around the library allowed the main public floor to be elevated above the adjacent sidewalks. It is surrounded largely by townhouse residences, with some retail and multi-family residential uses to the north and east. The Eastern Market Metro Station and plaza are directly across 7th Street.

The building has served the Capitol Hill community for nearly 100 years. Given the Library's age, however, it is in need of significant modernization and expansion to support growing community needs -- meeting spaces, public computer stations, study lounges, community amenities, and programming space for children and youth. The project proposes to fully modernize and rehabilitate the Library, including a below grade expansion and an addition.

1.2 PROJECT HISTORY

Southeast Neighborhood Library was constructed in 1922. Designed by renowned library architect Edward L. Tilton, it was funded by American industrialist and philanthropist Andrew Carnegie. It is one of 1,657 public libraries buildings in the United States funded by Carnegie. It was part of an expansion of Washington D.C.'s library system in the early 20th century due to Carnegie's philanthropy. The Library was the third of four libraries built during this period (Central Library, 1903; Takoma Park Branch, 1911; Southeast Branch, 1922; and Mt. Pleasant Branch, 1925). In March of 2021 the District of Columbia Historic Preservation Board (HPRB) designated the Library as a historic landmark.

The building has undergone a number of interior renovations over the years, primarily in the basement. With the exception of some new doorways at the north perimeter that provide basement level access, the building facade is mostly intact and still reflects the original 1922 construction.

1.3 PROJECT GOALS

The project is designed to modernize and expand the current library facility, addressing the goals of the the Library, DCPL and the community at large. The goals are as follows:

- Expand the Library from 8,500 SF to over 19,900 SF
- Make quantitative and qualitative improvements
- Provide a universally accessible public entry
- Preserve and rehabilitate the historic landmark
- Restore and re-interpret the historic site
- Replace all building systems

1.4 PROPOSED DESIGN

The proposed design of the Southeast Neighborhood Library will include both a below grade expansion and a rear addition. The increased space will allow for new meeting and conference rooms, additional community computing and collections, more seating and expanded space for children's programs and early learning environments.

While DCPL's standard prototypical space program for branches translates to be at least 21,300 square feet, the proposed design for Southeast Library expands the facility to approximately 19,924 square feet due to site constraints and its historic nature. The below grade expansion will involve lowering the existing Basement Floor to align with the South Carolina Ave sidewalk level and building an additional level below it, resulting in a below grade level (Lower Floor), a Ground Floor and an Upper Floor.

The proposed design also includes an addition on the west side of the Library. The addition will require cutting into, or interrupting the terraced berm to provide an accessible public entrance at ground level. The addition will house a new monumental public stair, elevator and building service core. On the Ground Level, a new entry vestibule will be provided.

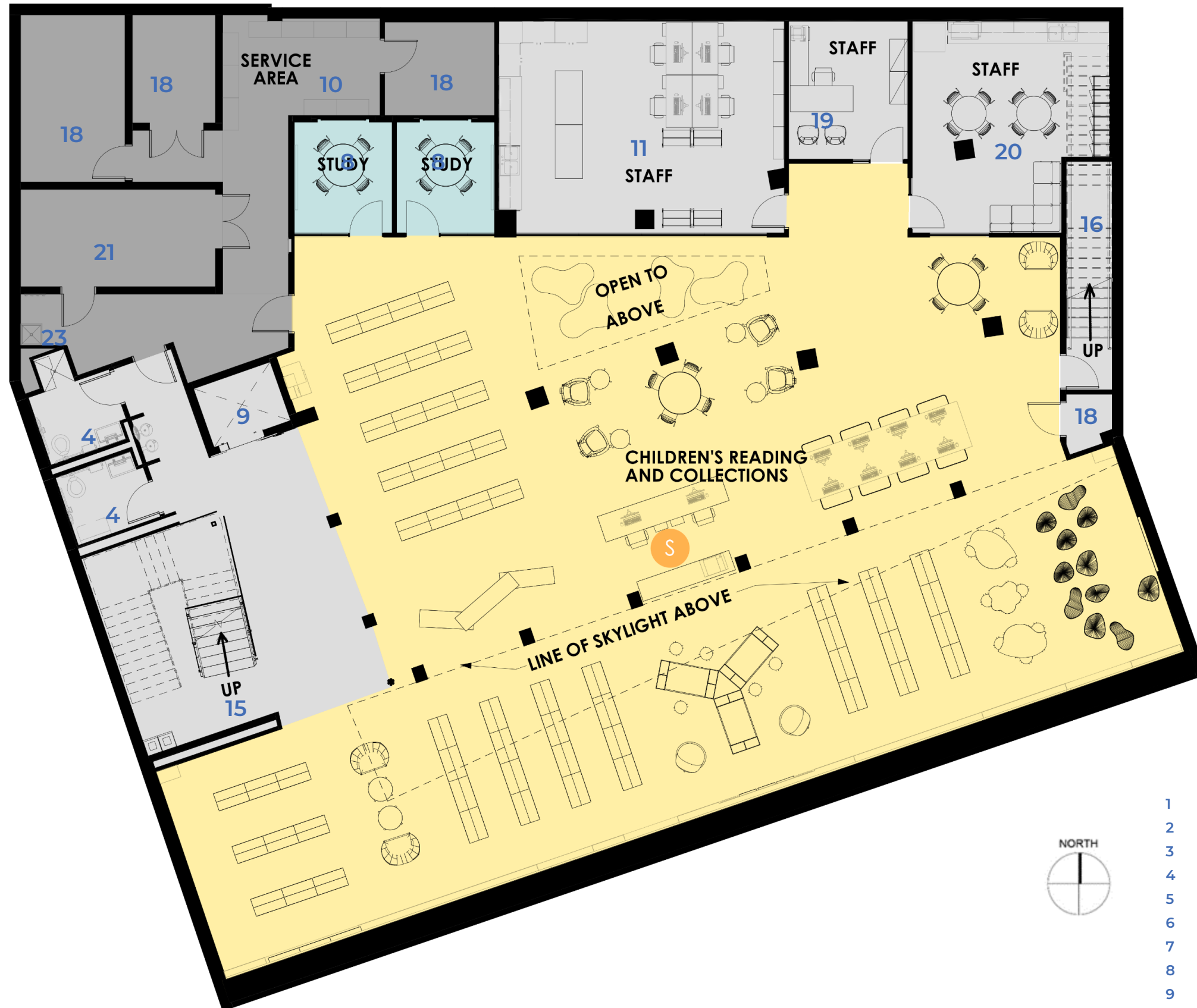
The design of the addition transitions between the civic and public scale of the existing library building and the residential scale of the neighboring townhouses. The south facade of the addition on South Carolina Avenue includes a two story glass curtain wall set within a panelized wall system. The center glass wall section turns horizontally at the roof to become a skylight above the public stair and service core. Horizontal terra cotta baguettes are framed in the curtain wall and skylight systems to provide sun shading.

Users are able to access each floor of the main building from the stair tower. There are service point desks near the entry at each floor to welcome patrons. The layout of the plans allow clear views from the service points to the numerous seating, meeting and collections areas. Floor openings in the center of the Library at the Upper and Ground Floors allow daylight to filter down from the new skylight in the existing main roof.

In addition, a new skylight is designed in the landscaped berm along the southern face of the original library that provides natural light for the children's collections and programs spaces at the Lower Floor, creating a warm environment for children's activities. The south wall that defines that space feature wood wall panels that fold onto a portion of roof; they reveal small nooks to support engaging and active learning.



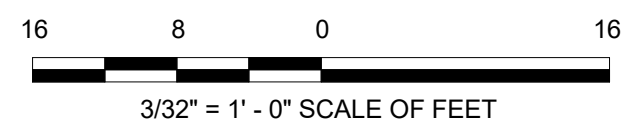
3.1 - SITE CONTEXT PLAN



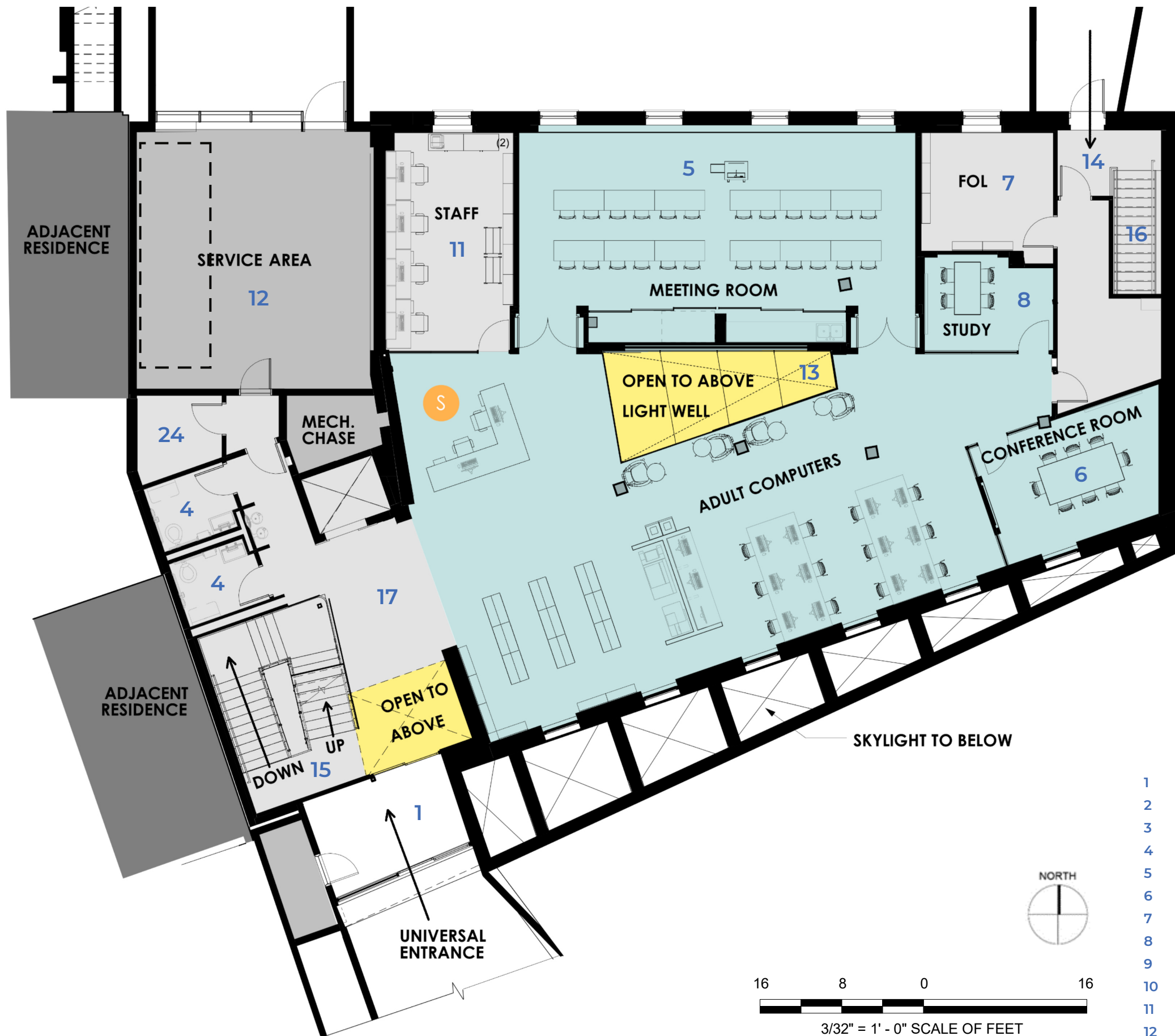
LEGEND

- S SERVICE DESK
- CHILDREN'S PROGRAM
- COMMUNITY PROGRAM
- ADULT PROGRAM
- LIBRARY/BUILDING SUPPORT

- 1 VESTIBULE
- 2 ENTRY PLAZA
- 3 SKYLIGHT IN LANDSCAPED BERM
- 4 RESTROOM
- 5 MEETING ROOM
- 6 CONFERENCE ROOM
- 7 FRIENDS OF LIBRARY ROOM
- 8 STUDY ROOM
- 9 ELEVATOR
- 10 STORAGE ROOM
- 11 STAFF WORKROOM
- 12 SERVICE COURT
- 13 FLOOR OPENING
- 14 STAFF ENTRY/EMERGENCY EXIT
- 15 PUBLIC STAIR
- 16 EXIT STAIR
- 17 LOBBY
- 18 MECHANICAL ROOM
- 19 STAFF OFFICE
- 20 STAFF BREAKROOM
- 21 ELECTRICAL ROOM
- 22 ELEVATED MECHANICAL PLATFORM
- 23 JANITOR'S CLOSET
- 24 I.T. CLOSET



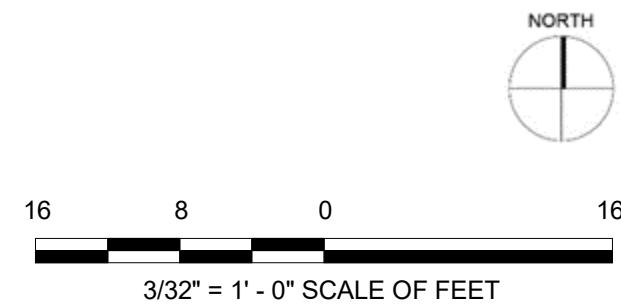
3.6 - PROPOSED PLAN - LOWER FLOOR



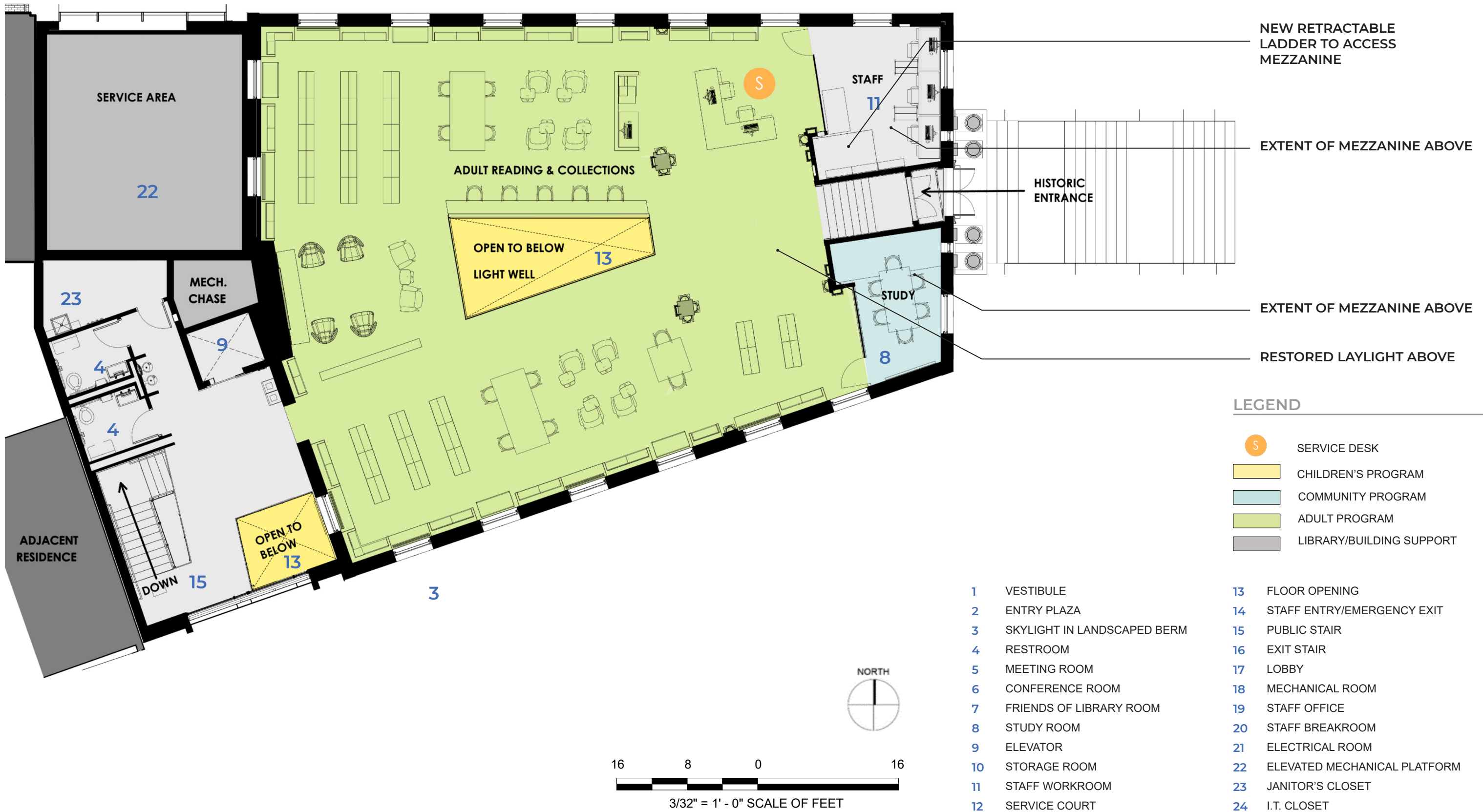
LEGEND

- S SERVICE DESK
- CHILDREN'S PROGRAM
- COMMUNITY PROGRAM
- ADULT PROGRAM
- LIBRARY/BUILDING SUPPORT

- | | |
|---|--|
| <ul style="list-style-type: none"> 1 VESTIBULE 2 ENTRY PLAZA 3 SKYLIGHT IN LANDSCAPED BERM 4 RESTROOM 5 MEETING ROOM 6 CONFERENCE ROOM 7 FRIENDS OF LIBRARY ROOM 8 STUDY ROOM 9 ELEVATOR 10 STORAGE ROOM 11 STAFF WORKROOM 12 SERVICE COURT | <ul style="list-style-type: none"> 13 FLOOR OPENING 14 STAFF ENTRY/EMERGENCY EXIT 15 PUBLIC STAIR 16 EXIT STAIR 17 LOBBY 18 MECHANICAL ROOM 19 STAFF OFFICE 20 STAFF BREAKROOM 21 ELECTRICAL ROOM 22 ELEVATED MECHANICAL PLATFORM 23 JANITOR'S CLOSET 24 I.T. CLOSET |
|---|--|



3.6 - PLAN - GROUND FLOOR



NEW RETRACTABLE LADDER TO ACCESS MEZZANINE

EXTENT OF MEZZANINE ABOVE

HISTORIC ENTRANCE

EXTENT OF MEZZANINE ABOVE

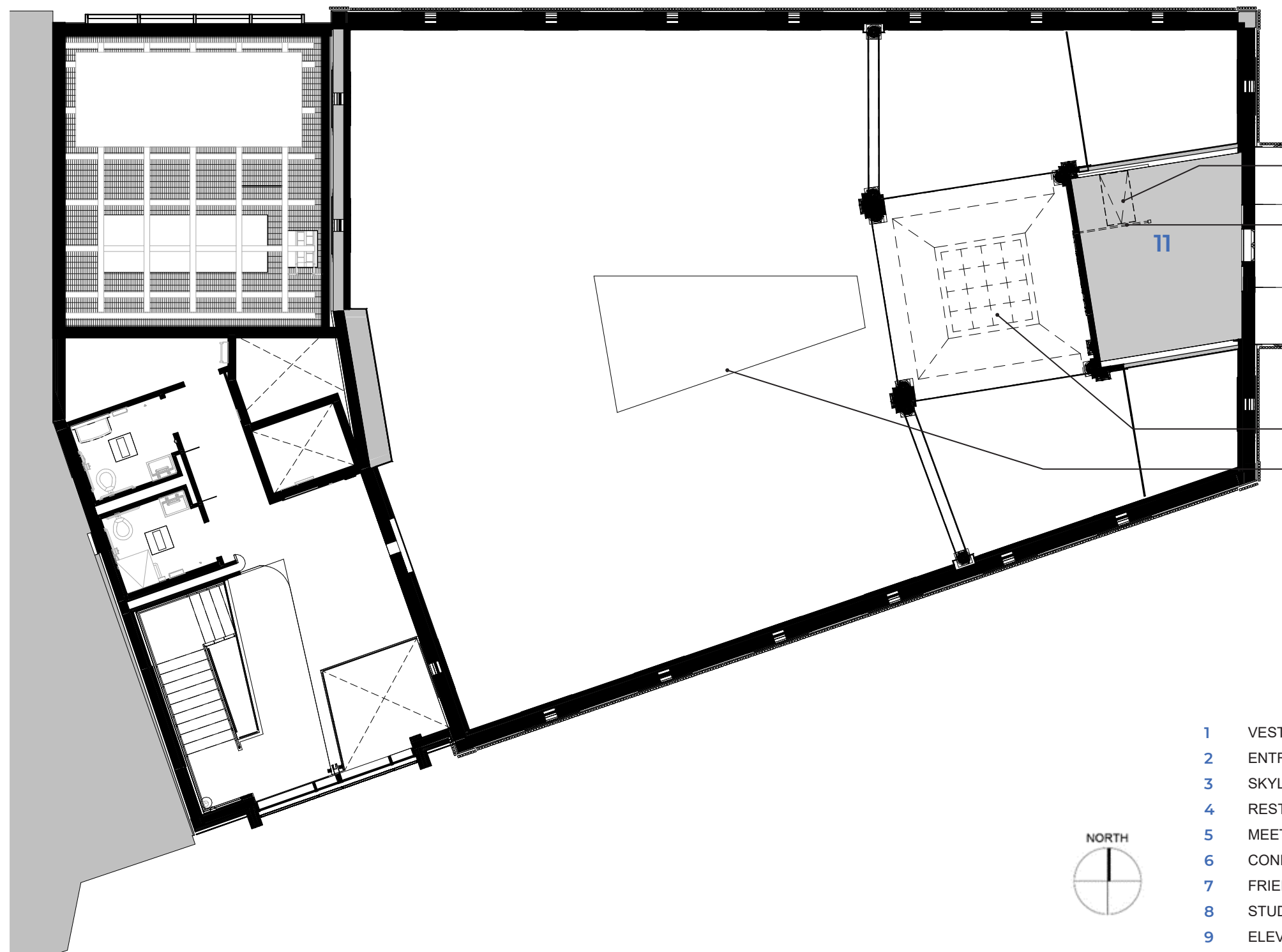
RESTORED LAYLIGHT ABOVE

LEGEND

- S SERVICE DESK
- CHILDREN'S PROGRAM
- COMMUNITY PROGRAM
- ADULT PROGRAM
- LIBRARY/BUILDING SUPPORT

- 1 VESTIBULE
- 2 ENTRY PLAZA
- 3 SKYLIGHT IN LANDSCAPED BERM
- 4 RESTROOM
- 5 MEETING ROOM
- 6 CONFERENCE ROOM
- 7 FRIENDS OF LIBRARY ROOM
- 8 STUDY ROOM
- 9 ELEVATOR
- 10 STORAGE ROOM
- 11 STAFF WORKROOM
- 12 SERVICE COURT
- 13 FLOOR OPENING
- 14 STAFF ENTRY/EMERGENCY EXIT
- 15 PUBLIC STAIR
- 16 EXIT STAIR
- 17 LOBBY
- 18 MECHANICAL ROOM
- 19 STAFF OFFICE
- 20 STAFF BREAKROOM
- 21 ELECTRICAL ROOM
- 22 ELEVATED MECHANICAL PLATFORM
- 23 JANITOR'S CLOSET
- 24 I.T. CLOSET

3.6 - PLAN - UPPER FLOOR



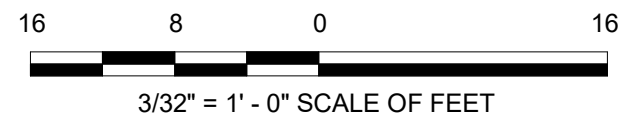
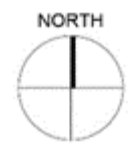
NEW RETRACTABLE LADDER TO ACCESS MEZZANINE
 EXISTING RAILING TO BE REMOVED AND PRESERVED

RESTORED LAYLIGHT ABOVE
 NEW SKYLIGHT WELL

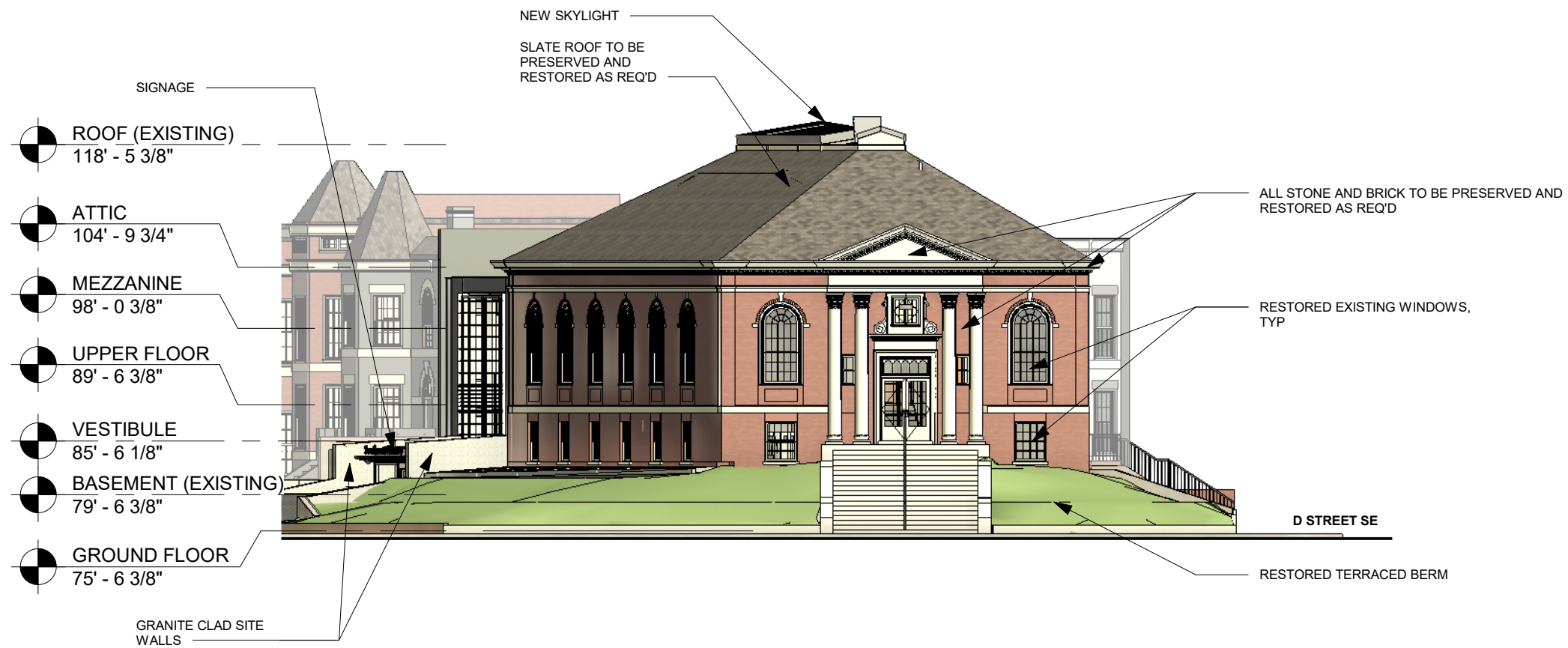
LEGEND

	CHILDREN'S PROGRAM
	COMMUNITY PROGRAM
	ADULT PROGRAM
	LIBRARY/BUILDING SUPPORT

- | | |
|-------------------------------|---------------------------------|
| 1 VESTIBULE | 13 FLOOR OPENING |
| 2 ENTRY PLAZA | 14 STAFF ENTRY/EMERGENCY EXIT |
| 3 SKYLIGHT IN LANDSCAPED BERM | 15 PUBLIC STAIR |
| 4 RESTROOM | 16 EXIT STAIR |
| 5 MEETING ROOM | 17 LOBBY |
| 6 CONFERENCE ROOM | 18 MECHANICAL ROOM |
| 7 FRIENDS OF LIBRARY ROOM | 19 STAFF OFFICE |
| 8 STUDY ROOM | 20 STAFF BREAKROOM |
| 9 ELEVATOR | 21 ELECTRICAL ROOM |
| 10 STORAGE ROOM | 22 ELEVATED MECHANICAL PLATFORM |
| 11 STAFF WORKROOM | 23 JANITOR'S CLOSET |
| 12 SERVICE COURT | 24 I.T. CLOSET |



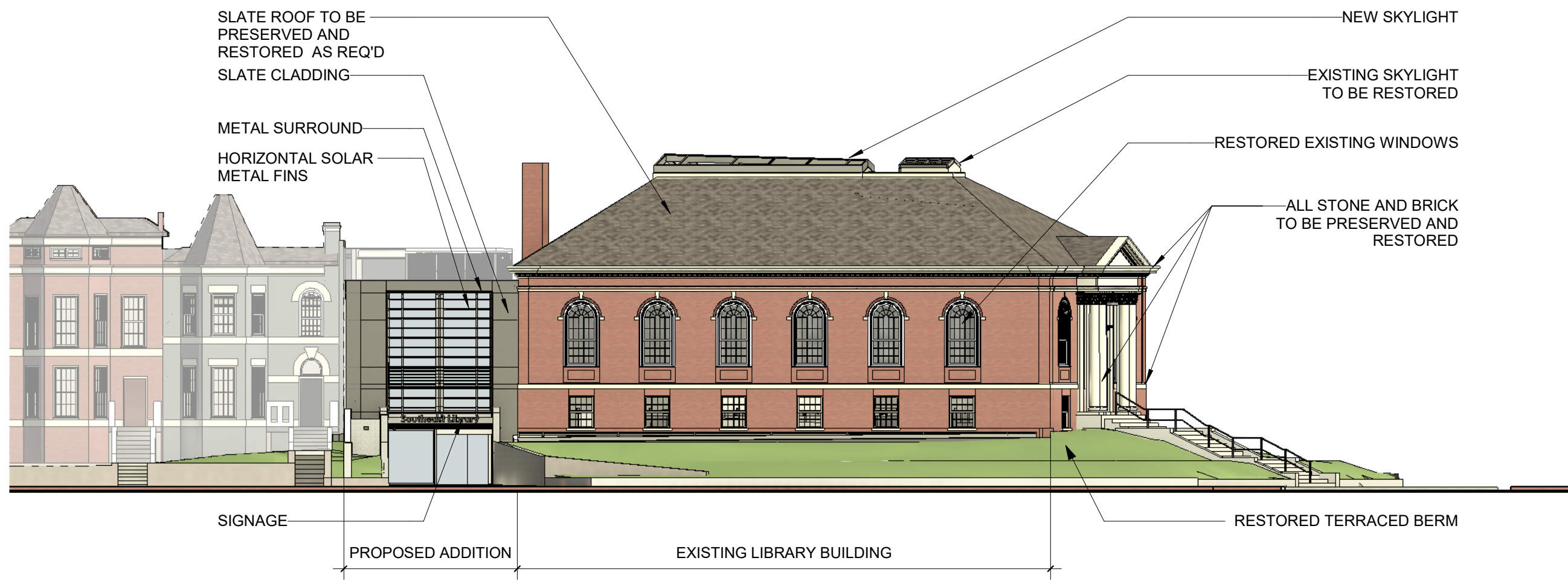
3.6 - PLAN - MEZZANINE



1 EAST ELEVATION
1/16" = 1' - 0"



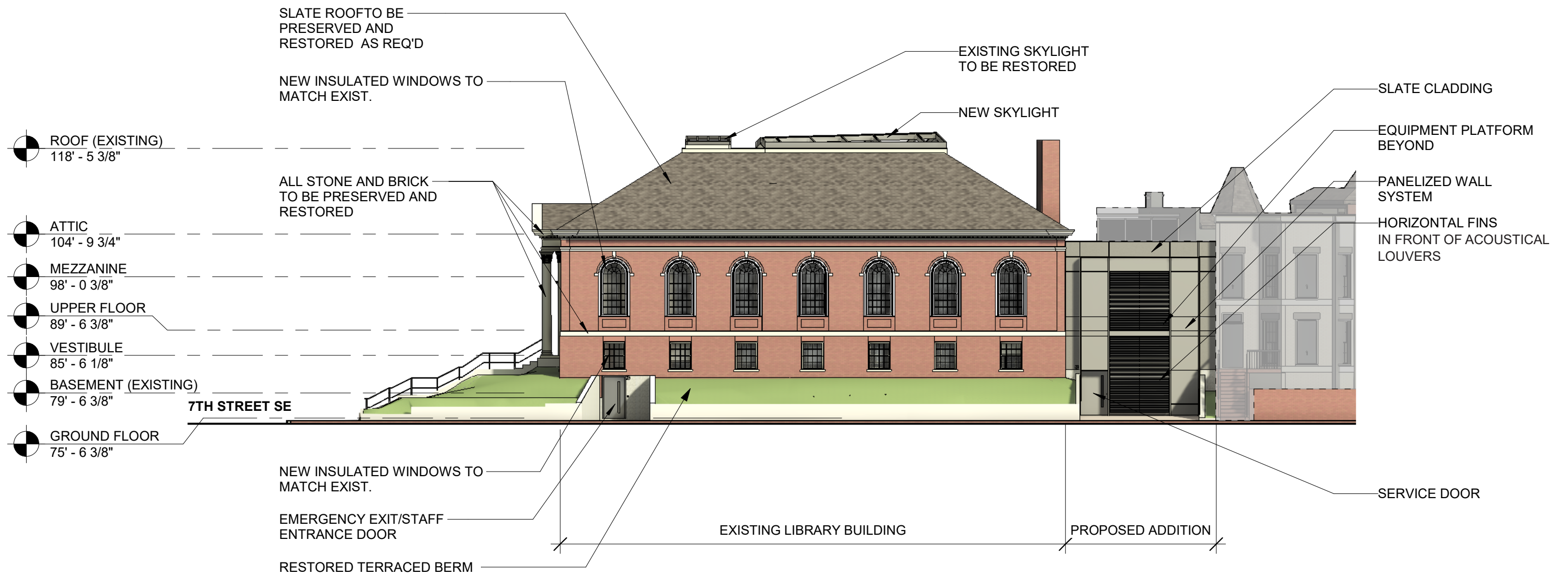
3.7 - ELEVATION - EAST



2 SOUTH ELEVATION
 1/16" = 1' - 0"



3.7 - ELEVATION - SOUTH



3 NORTH ELEVATION
 1/16" = 1' - 0"

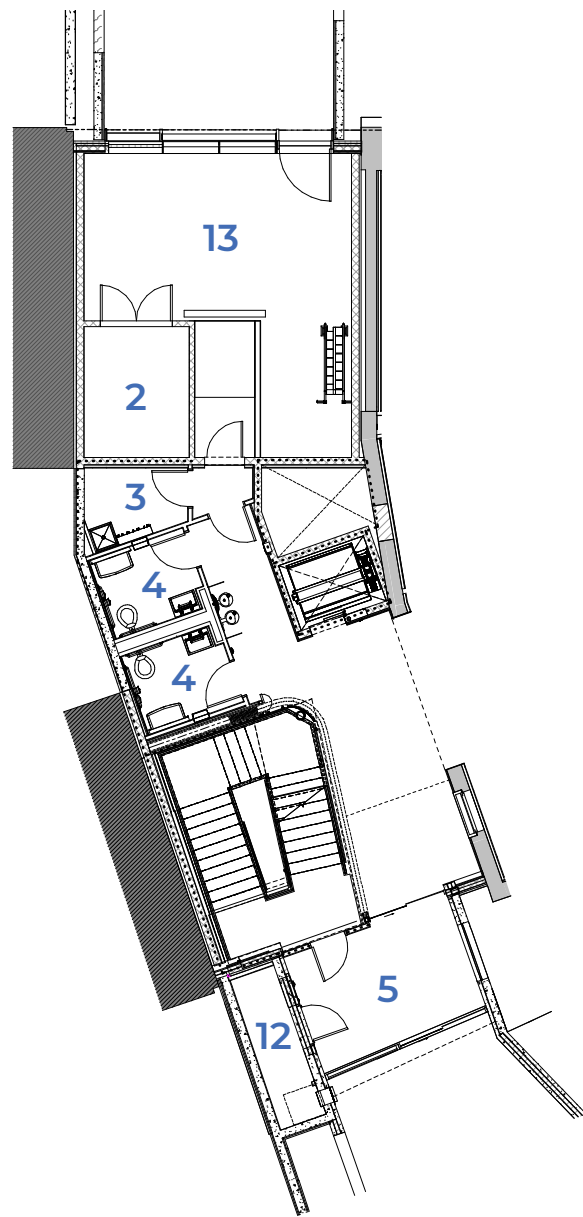


3.7 - ELEVATION - NORTH

LEGEND

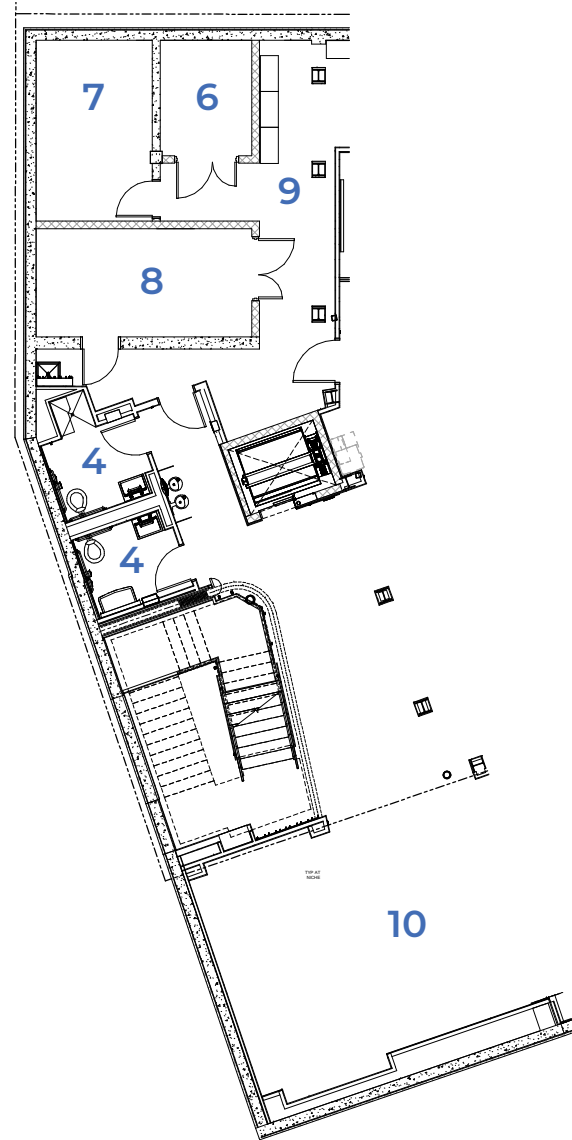
- 1 MECHANICAL ROOM
- 2 TRASH ROOM
- 3 JANITOR
- 4 TOILET
- 5 VESTIBULE
- 6 EQUIPMENT
- 7 IDF
- 8 ELECTRICAL
- 9 STORAGE
- 10 CHILDREN'S AREA
- 11 LOBBY
- 12 BOOK DROP
- 13 SERVICE COURT

PROPOSED ADDITION EXISTING LIBRARY



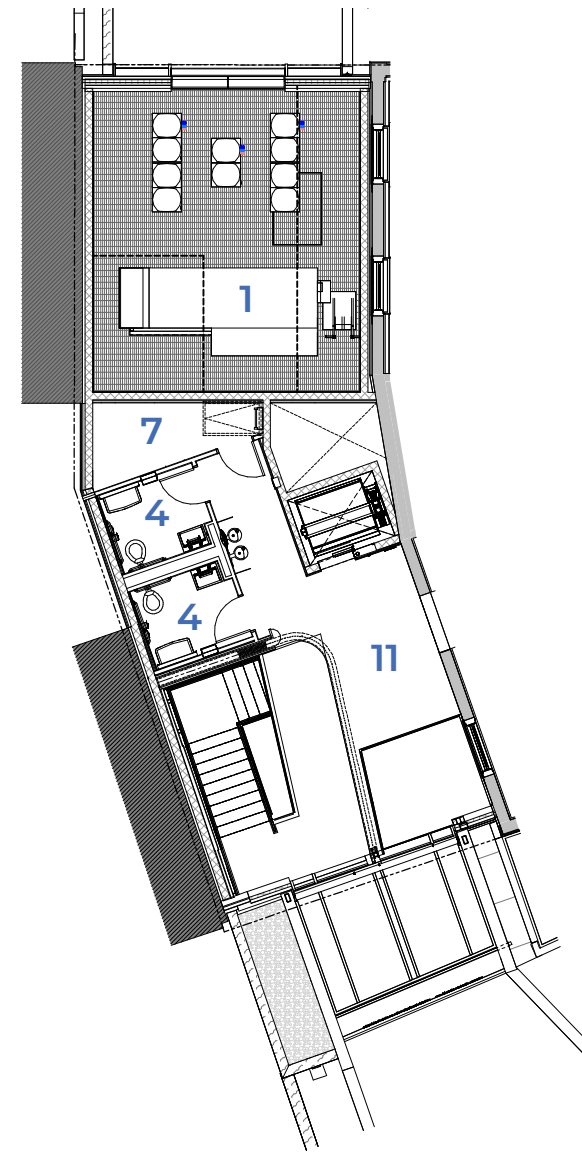
1 GROUND LEVEL
1/16" = 1' - 0"

PROPOSED ADDITION EXISTING LIBRARY



2 LOWER LEVEL
1/16" = 1' - 0"

PROPOSED ADDITION EXISTING LIBRARY



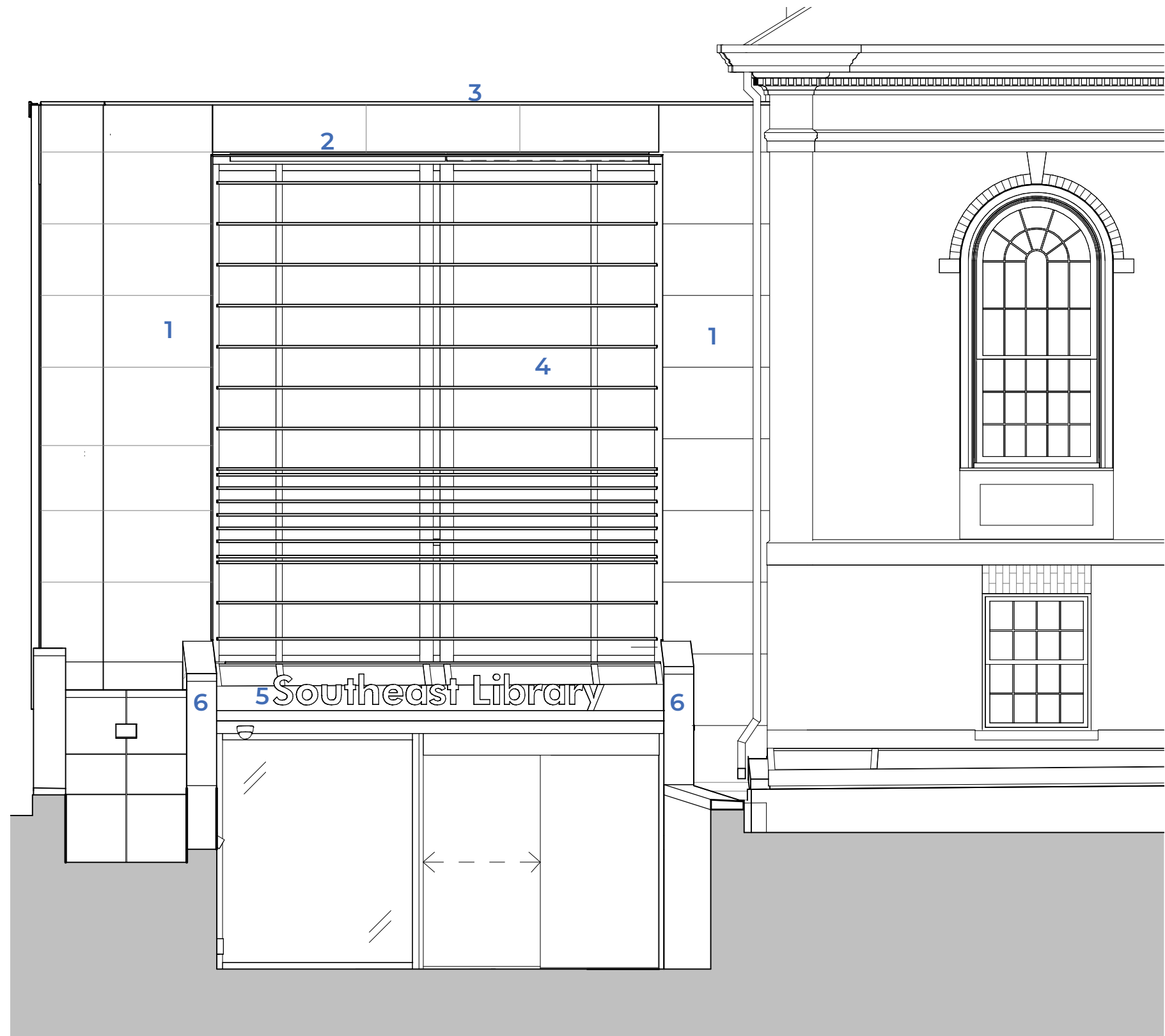
3 UPPER LEVEL
1/16" = 1' - 0"



3.8 - ENLARGED PLAN - ADDITION

LEGEND

- 1 SLATE CLADDING
- 2 METAL SURROUND
- 3 PARAPET
- 4 CURTAIN WALL W/METAL SOLAR HORIZONTAL FINS
- 5 LIBRARY SIGNAGE
- 6 GRANITE CLAD SITE WALLS



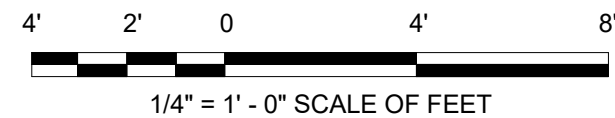
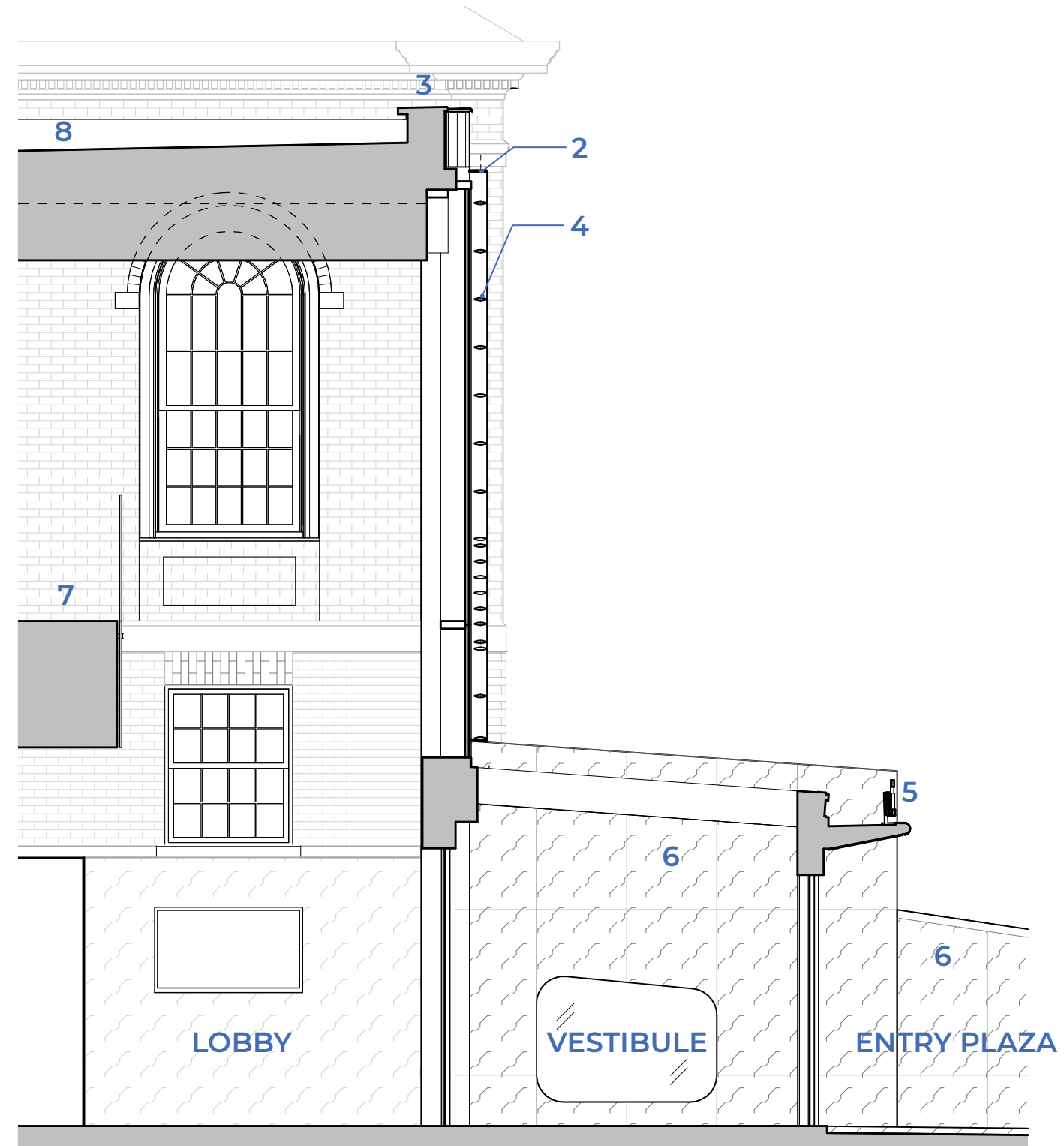
4' 2' 0 4' 8'

1/4" = 1' - 0" SCALE OF FEET

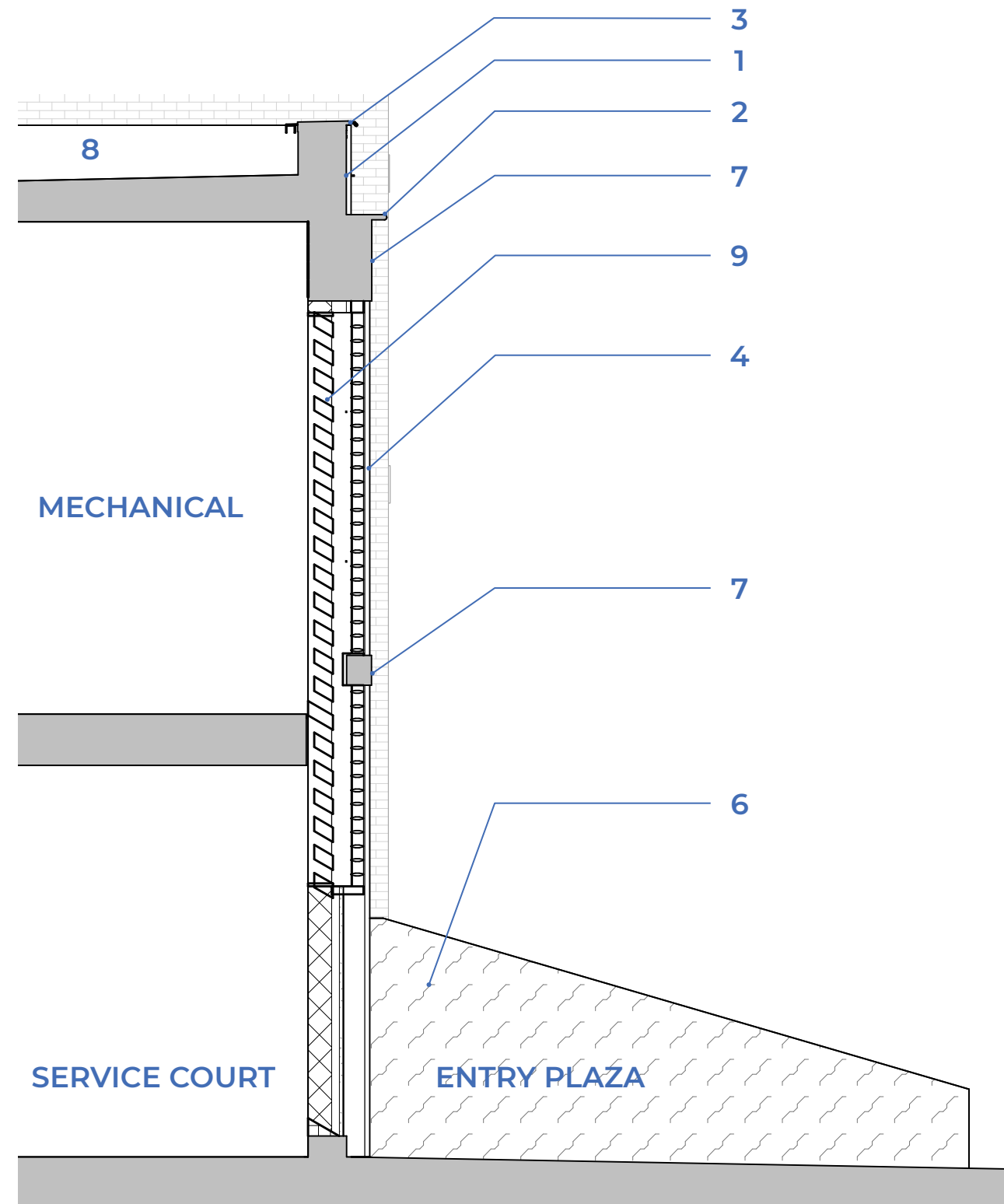
3.8 - ENLARGED ELEVATION - SOUTH

LEGEND

- 1 SLATE CLADDING
- 2 METAL SURROUND
- 3 PARAPET
- 4 CURTAIN WALL W/METAL SOLAR HORIZONTAL FINNS
- 5 LIBRARY SIGNAGE
- 6 GRANITE CLAD SITE WALLS
- 7 SECOND FLOOR LANDING
- 8 GREEN ROOF



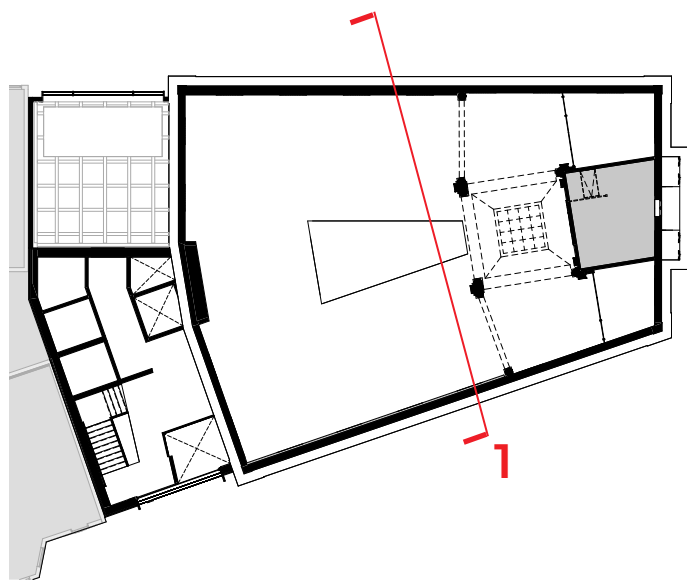
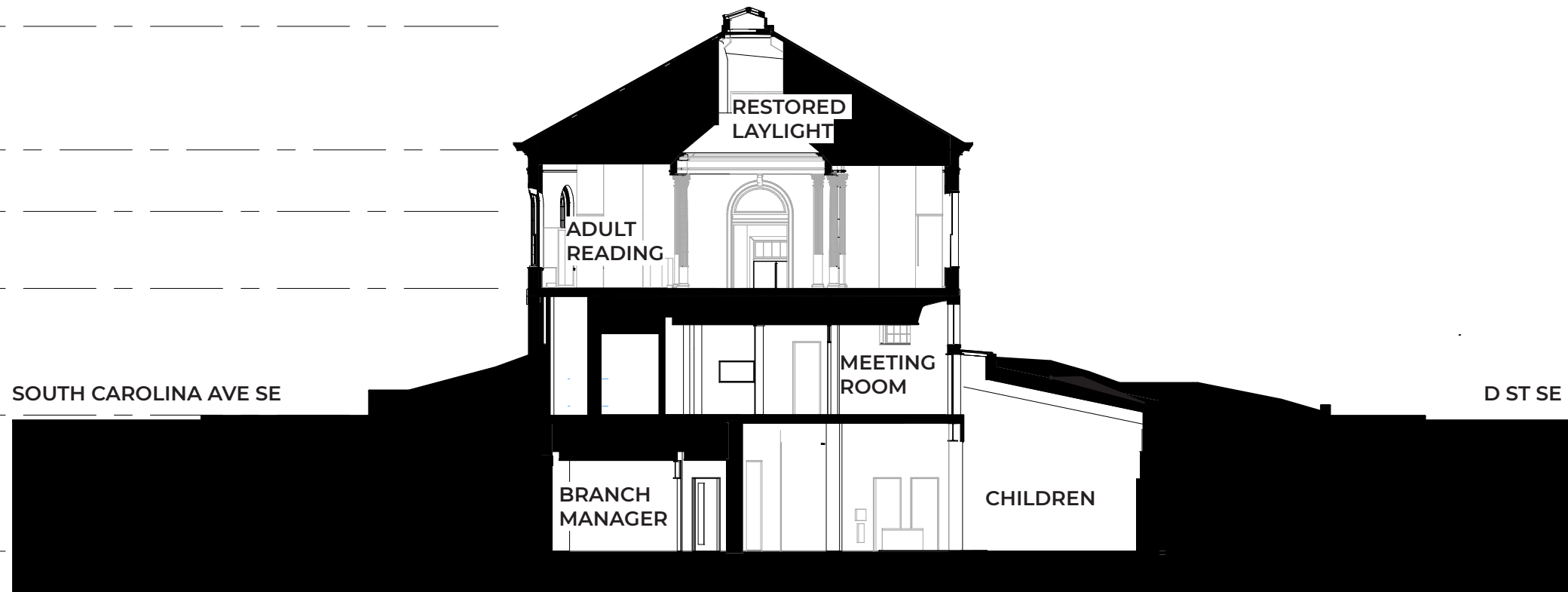
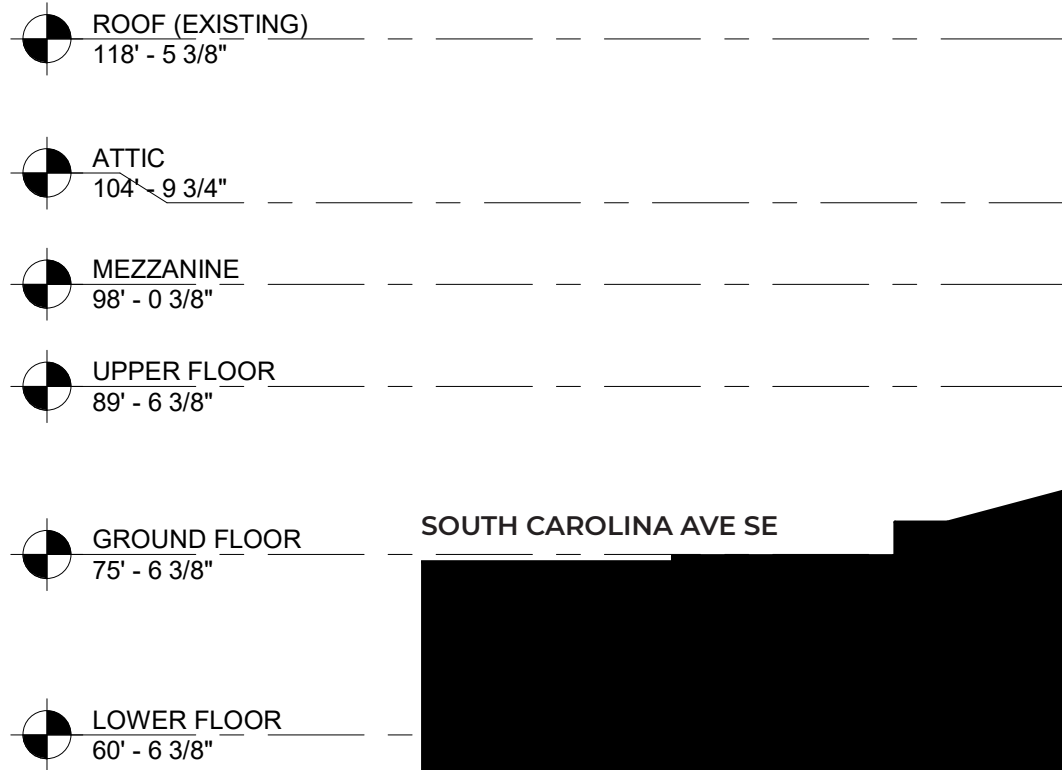
3.8 - ENLARGED SECTION - SOUTH



LEGEND

- 1 SLATE CLADDING
- 2 METAL SURROUND
- 3 PARAPET
- 4 METAL SOLAR HORIZONTAL FINNS
- 5 SECURITY CAMERA
- 6 GRANITE CLAD SITE WALLS
- 7 FLUSH METAL PANELS IN METAL SURROUND
- 8 GREEN ROOF
- 9 ACOUSTICAL LOUVERS

3.8 - ENLARGED SECTION - NORTH

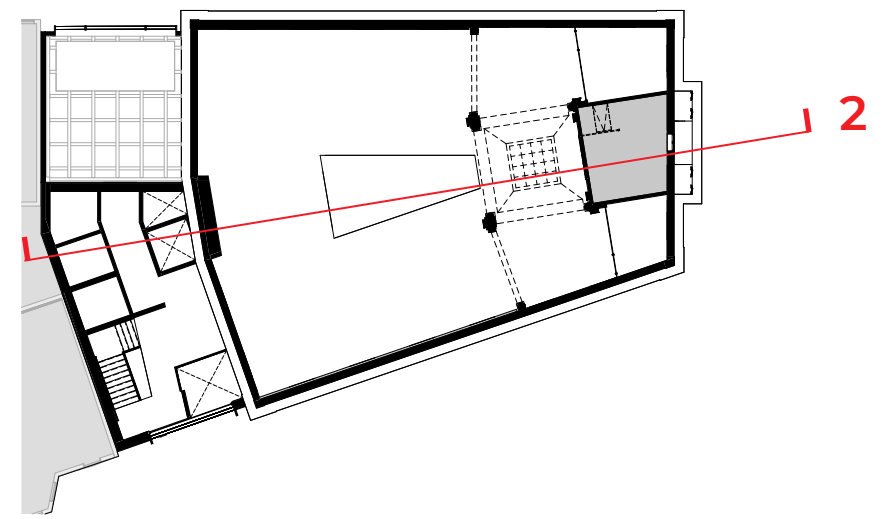
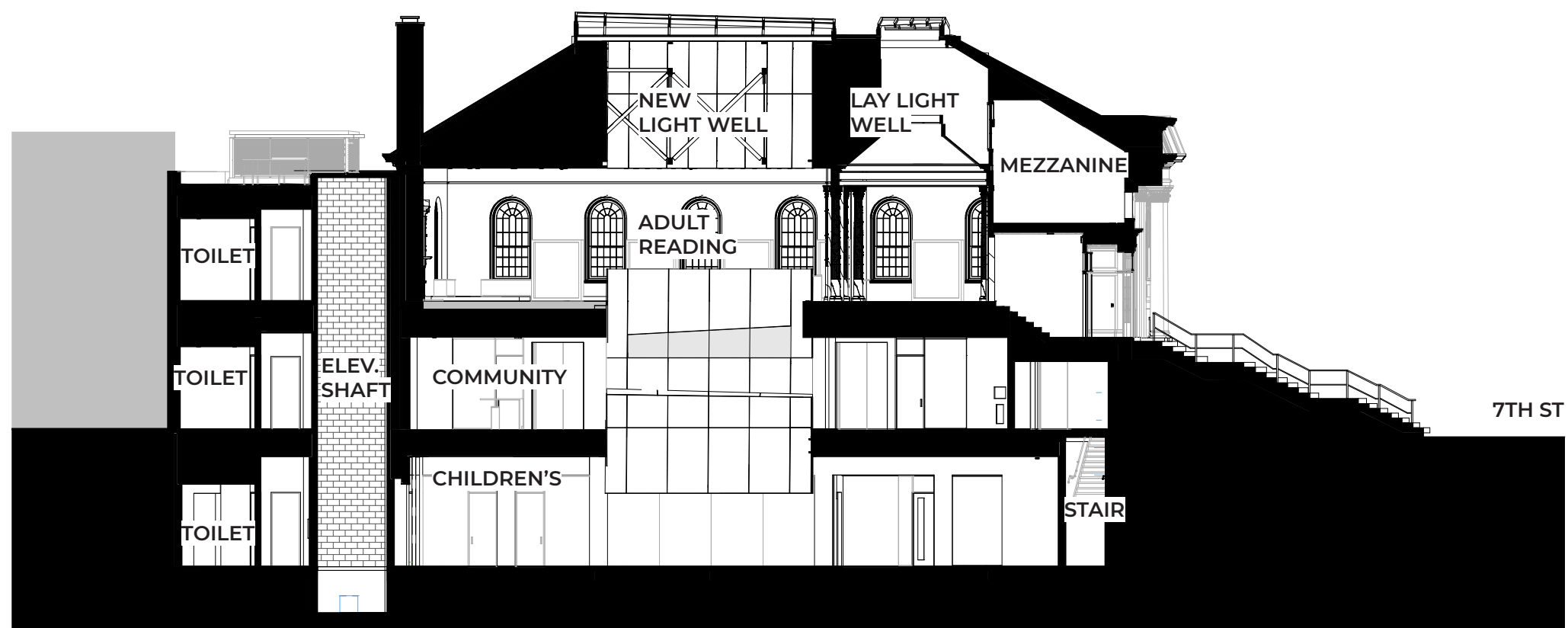


1 BUILDING SECTION - TRANSVERSE (NORTH - SOUTH)
1/16" = 1' - 0"



3.9 - SECTIONS

- SKYLIGHT
118' - 9 3/8"
- ATTIC
104' - 9 3/4"
- ADDITION ROOF
101' - 6 1/16"
- MEZZANINE
98' - 0 3/8"
- UPPER FLOOR
89' - 6 3/8"
- GROUND FLOOR
75' - 6 3/8"
- LOWER FLOOR
60' - 6 3/8"



2 BUILDING SECTION - LONGITUDINAL (EAST - WEST)
1/16" = 1' - 0"



3.9 - SECTIONS



3.10 - RENDERINGS - SECTIONAL PERSPECTIVE



3.10 - RENDERING - VIEW OF SOUTH ENTRY



3.10 - RENDERING - VIEW OF SOUTH ENTRY (NIGHT)



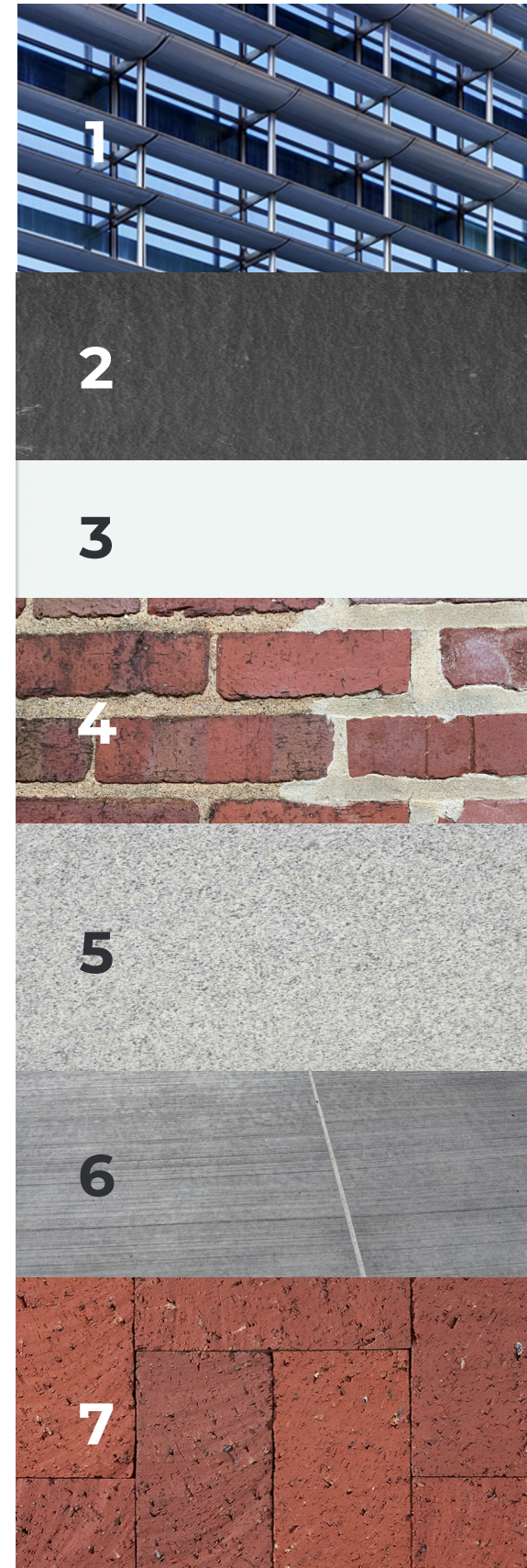
3.10- RENDERING - VIEW OF SOUTH ENTRY



3.10 - RENDERING - VIEW OF SOUTH ENTRY FROM SOUTH CAROLINA AVE SE



3.10 - RENDERING - VIEW OF SOUTH ENTRY FROM 7TH ST SE



1 Solar Horizontal Metal Fins

2 Slate Cladding

3 Clear Insulated Glass

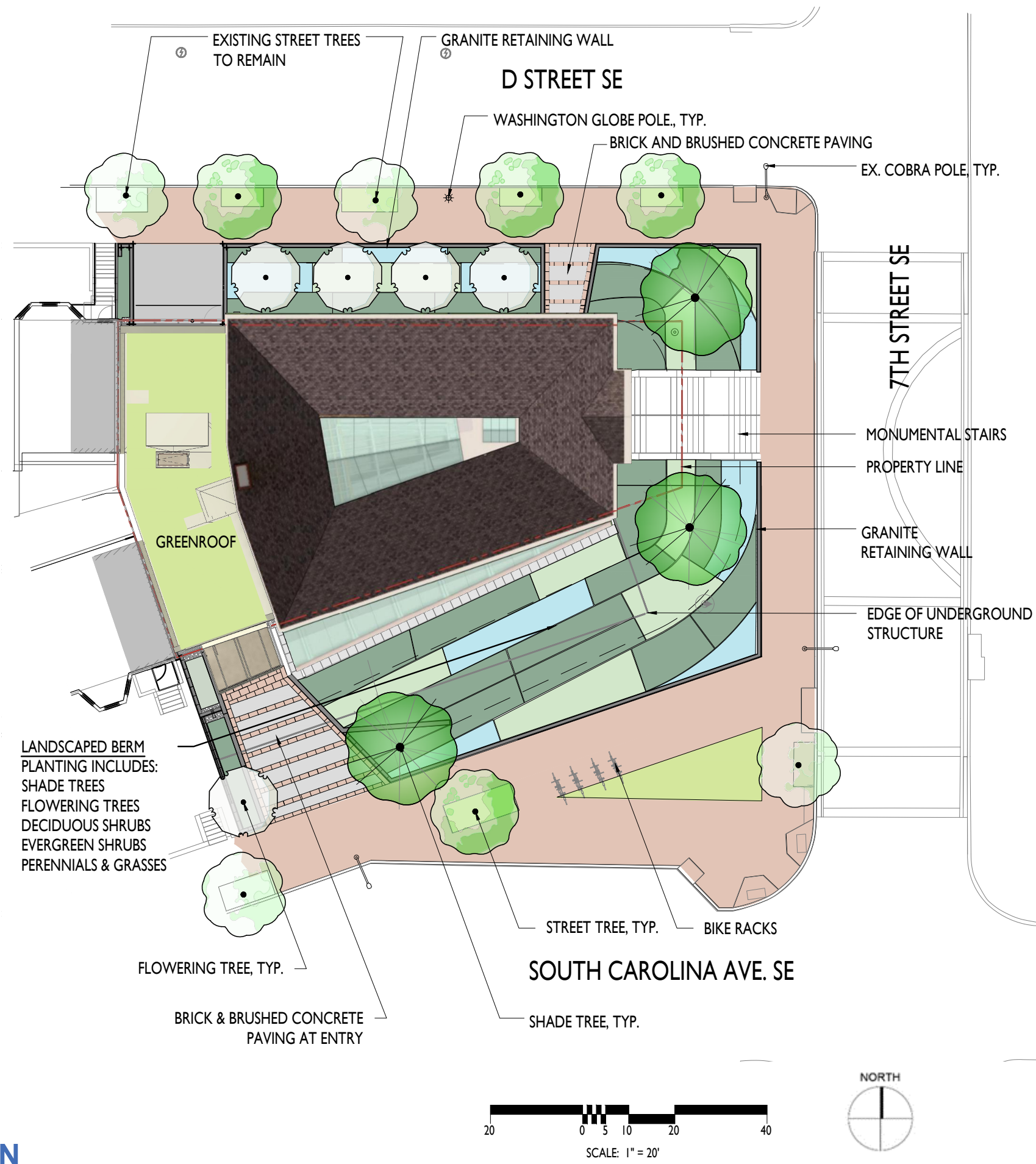
4 Existing Red Brick

5 Speckled Granite

6 Concrete Paving

7 Brick Pavers

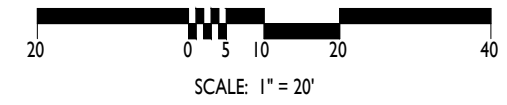
3.11 - MATERIALS PALETTE



PLANTING STATISTICS
 100% NATIVE & ADAPTIVE PLANTINGS
 32% EVERGREEN PLANTS
 68% DECIDUOUS PLANTS
 6270 SQFT OF PLANTING
 MEETS UFD 40% CANOPY
 COVERAGE REQUIREMENTS

PLANTING KEY

- GRASSES
- PERENNIALS
- SHRUBS
- FLOWERING TREE
- STREET TREE
- EXISTING STREET TREE
- SHADE TREE



3.12 - LANDSCAPE PLAN

STREET TREES



Tilia americana



Ulmus americana
'Jefferson'

SHADE/FLOWERING TREES



Nyssa sylvatica 'Wildfire'



Cercis canadensis
'Forest Pansy'



Gleditsia triacanthos
f. *inermis* 'Skyline'



Amelanchier x grandiflora
'Autumn Brilliance'

SHRUBS



Hydrangea quercifolia
'Ruby Slippers'



Hydrangea quercifolia
'Sike's Dwarf'



Ilex glabra 'Gem Box'



Ilex verticillata 'Red Sprite' /
'Jim Dandy (Male)'



Jasminum nudiflorum



Myrica cerifera 'Don's Dwarf'



Viburnum awabuki 'Chindo'



Taxus x baccata 'Repandens'



Taxus x media 'Everlow'



Viburnum x burkwoodii 'Conoy'



Aronia melanocarpa
'Low Scape Mound'



Clethra ainifolia
'Hummingbird'

PERENNIALS/GRASSES



Deschampsia cespitosa



Eragrostis spectabilis



Panicum virgatum 'Shenandoah'



Nepeta x 'Walker's Low'



Allium x 'Millenium'



Rudbeckia fulgida sullivantii
'Goldsturm'



Astilbe chinensis pumila



Heuchera villosa 'Autumn Bride'



Amsonia x 'Blue Ice'



Echinacea purpurea 'White Swan'



Amsonia hubrichtii



Pycnanthemum muticum

3.12 - PLANT PALETTE