



**9/11 PENTAGON MEMORIAL
VISITOR EDUCATION CENTER**
ARLINGTON, VIRGINIA

CFA CONCEPTUAL REVIEW: September 21st, 2023

PRIOR DESIGN (COMMENTS RECEIVED FROM CFA IN JUNE 2023)

- *Endorsed the revised site plan and lowering of the overall height of the building in relation to adjacent cultural sites.*
- *Concerned about the building's hierarchy, proportions, and materials used in the facade design.*
- *Directed that the VEC design needs to convey a dignified character appropriate to Arlington National Cemetery, the Pentagon 9/11 Memorial, and the Pentagon.*
- *Discouraged the use of the bench form as seen throughout the Pentagon 9/11 Memorial as a primary rationale for the facade design.*
- *Discouraged the use of graphic expression of "77"*
- *Concerned about the articulation of the entrances, specifically that these were ambiguous in relation to the other bays.*
- *Recommended elevating the architectural character by simplifying the design.*
- *Encouraged rethinking the lower landscaping to create a more direct path between the VEC and the memorial.*



SITE CONTEXT + PRECEDENTS



ARLINGTON
NATIONAL
CEMETERY

PENTAGON 9/11
MEMORIAL

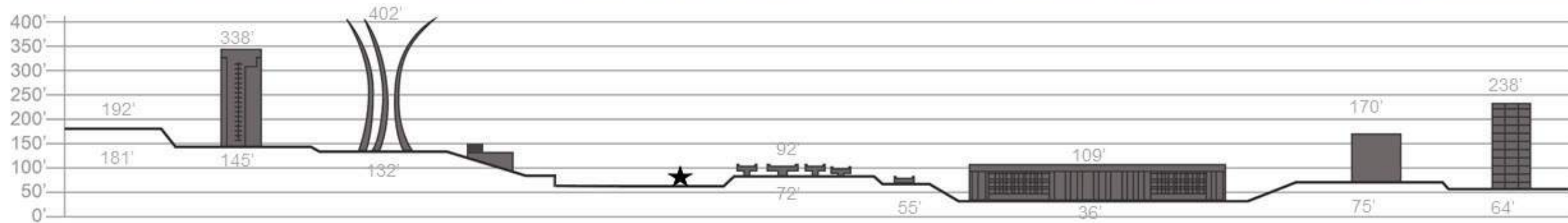
ANC SOUTHERN
EXPANSION SITE

PENTAGON 9/11 VEC
PROJECT SITE



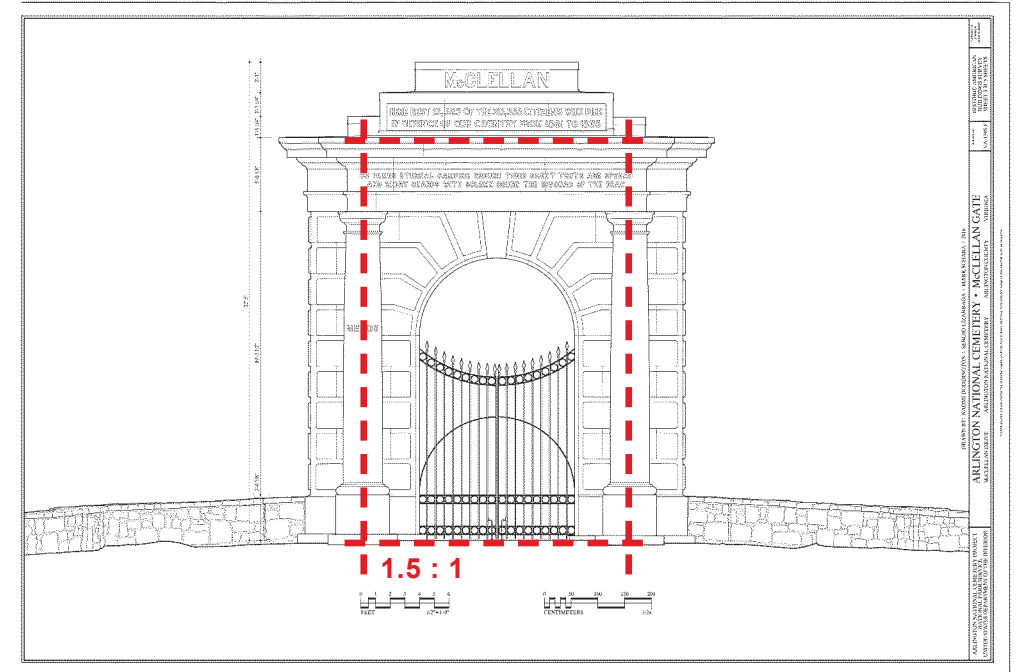
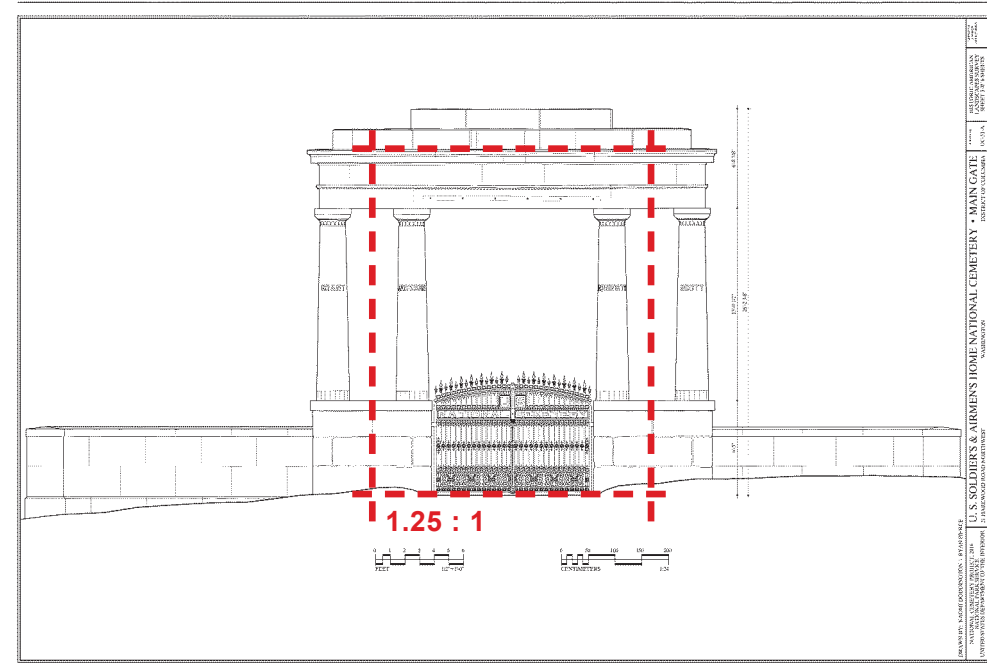
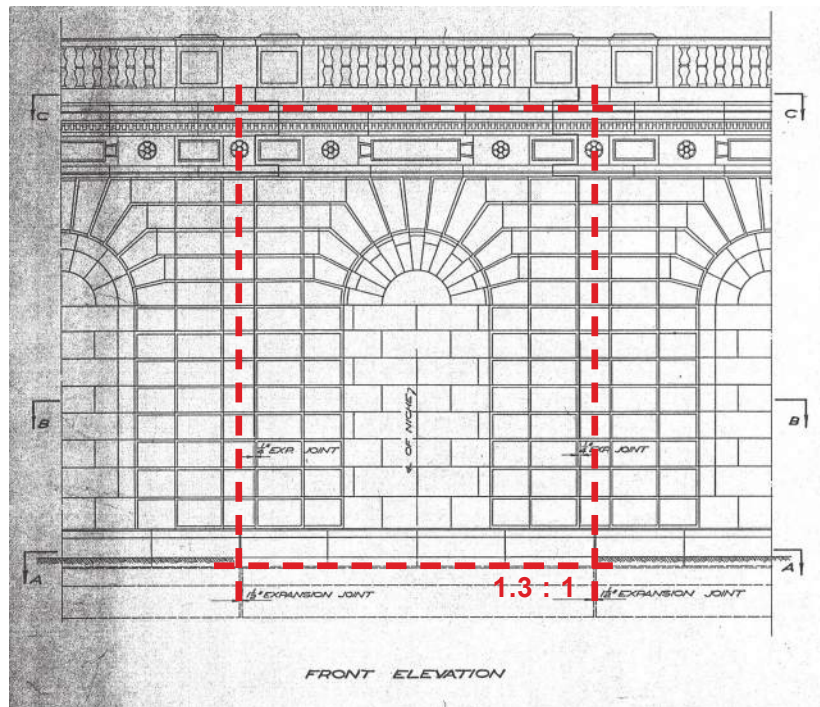
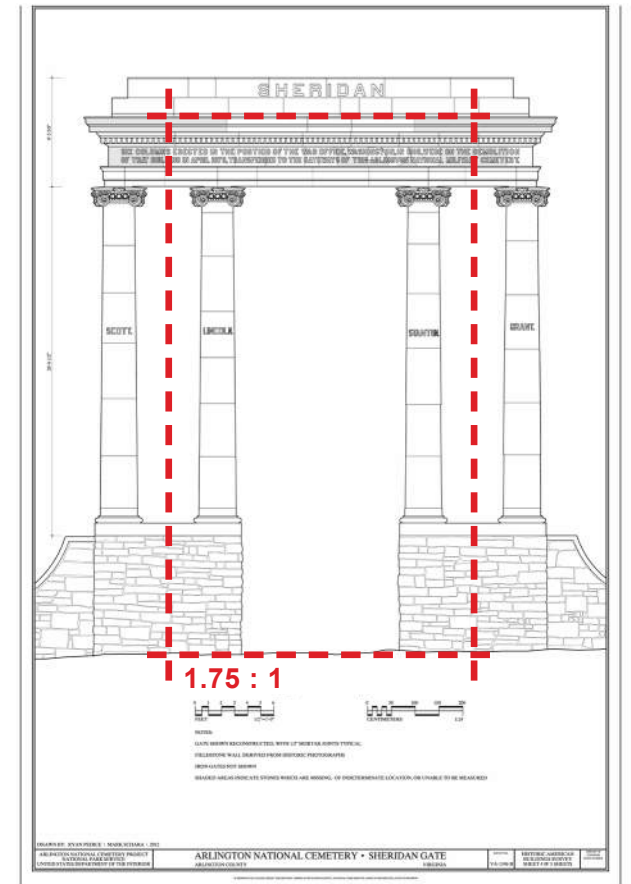
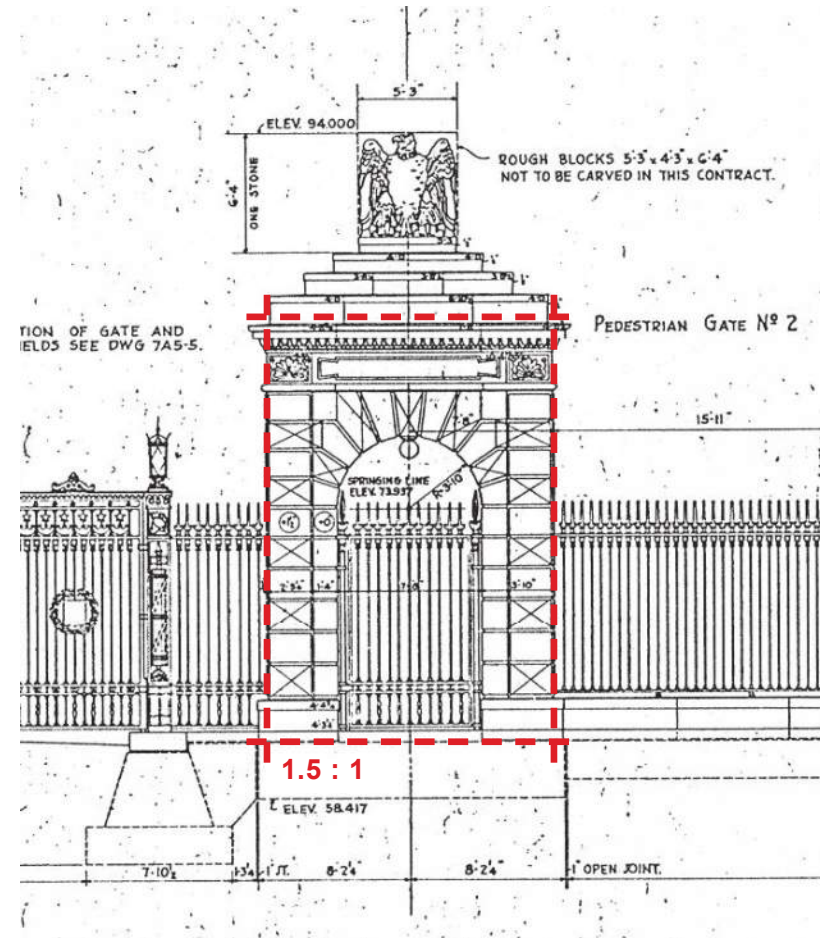
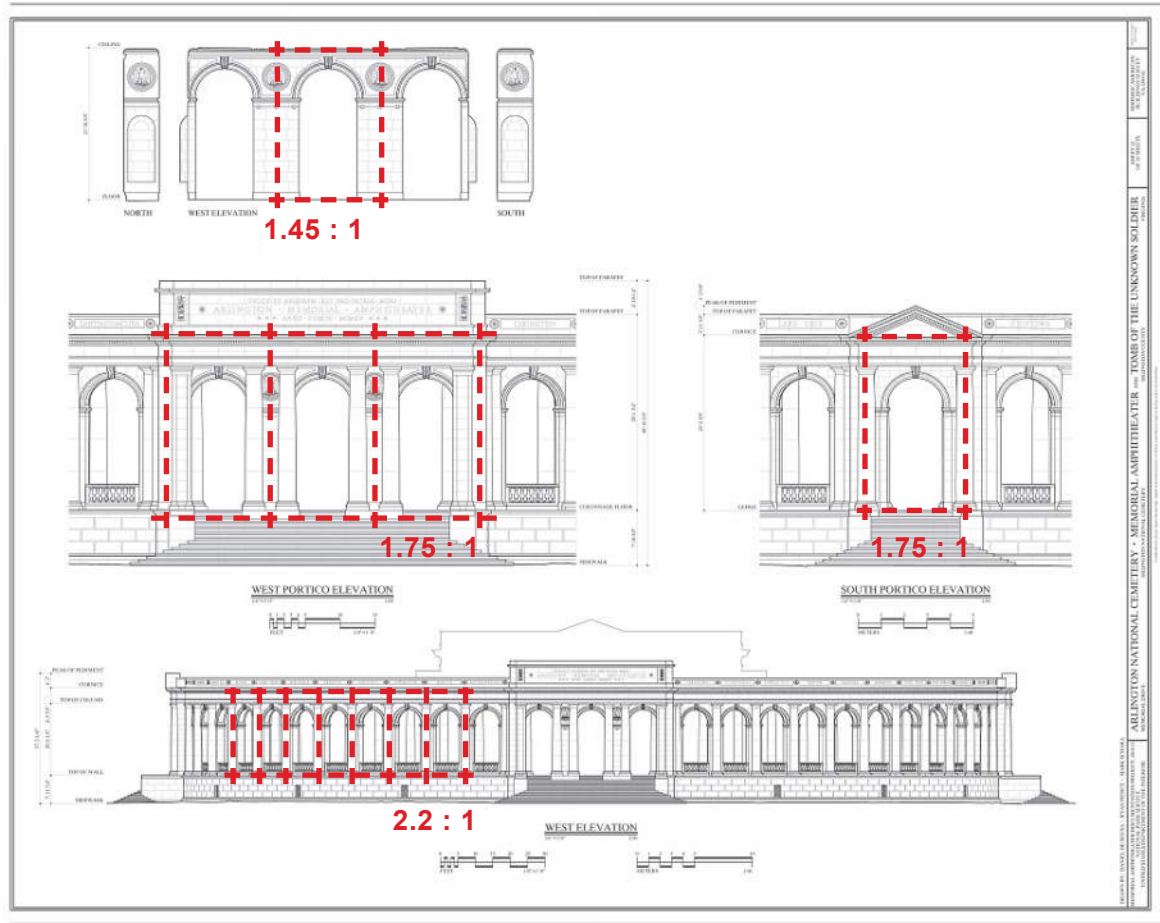
SOUTHERN EXPANSION

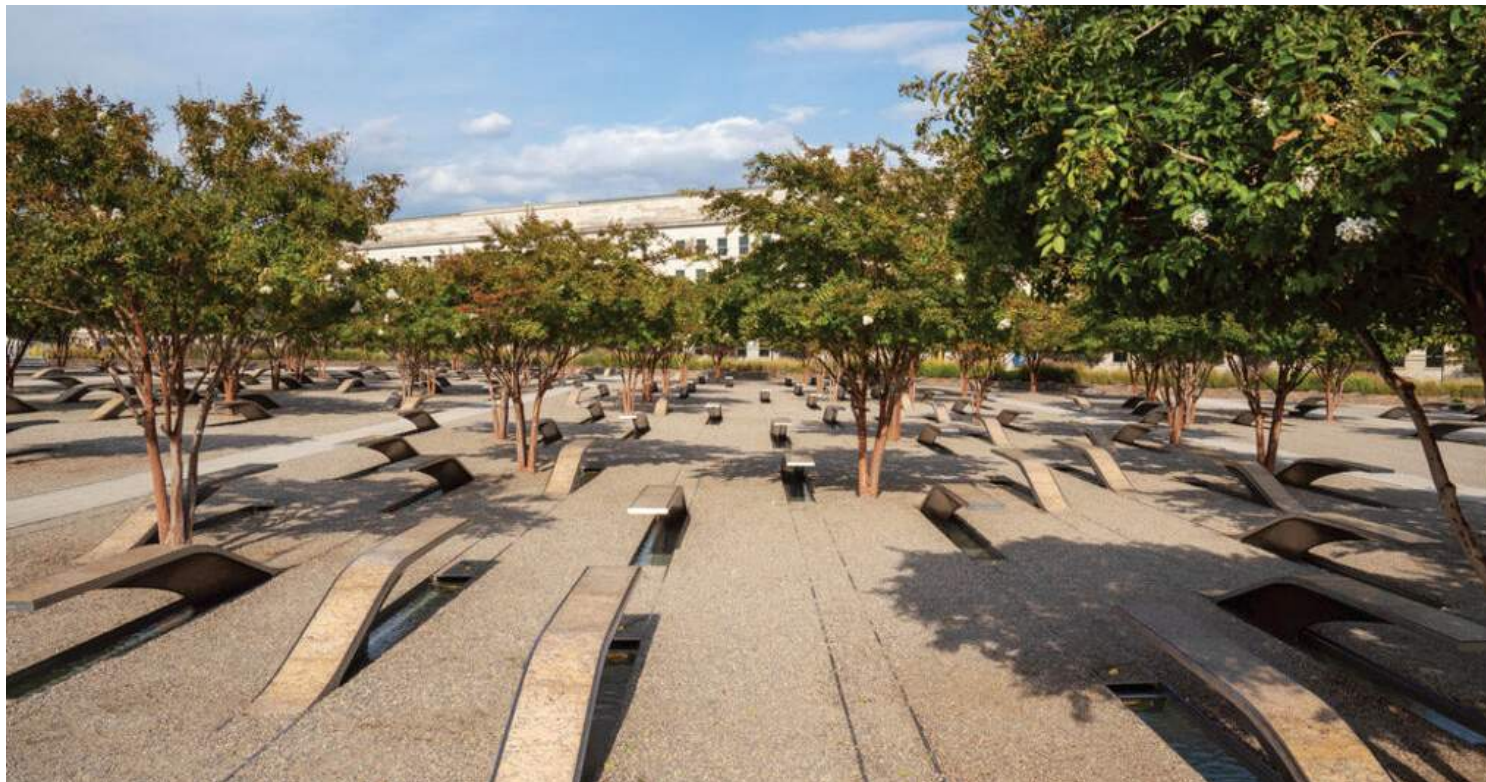




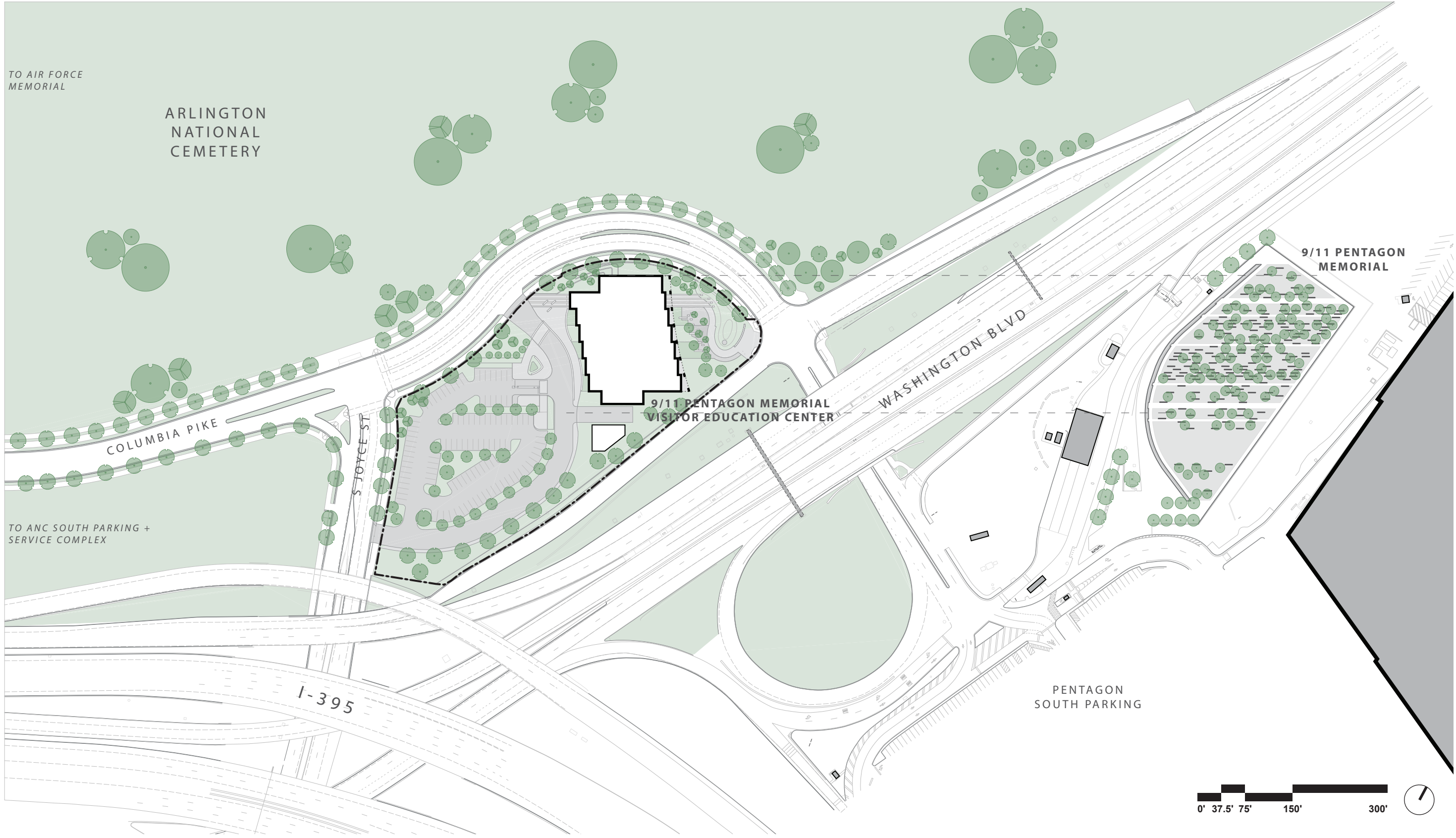
- 1** TOMB OF THE UNKNOWN SOLDIER
- 2** SHERATON HOTEL
- 3** AIR FORCE MEMORIAL
- 3.5** ANC. PARKING STRUC., 3RD FLR PARAPET
- 4** 9/11 PENTAGON MEMORIAL VISITOR EDUCATION CTR
- 5** I-395
- 6** WASHINGTON BLVD
- 7** PENTAGON
- 8** PENTAGON ROW SHOPPING CENTER
- 9** JAMES AT RIVER HOUSE

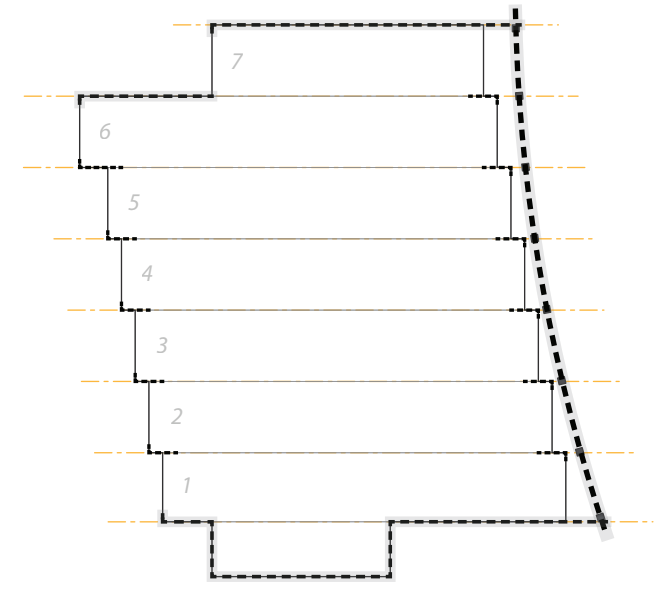
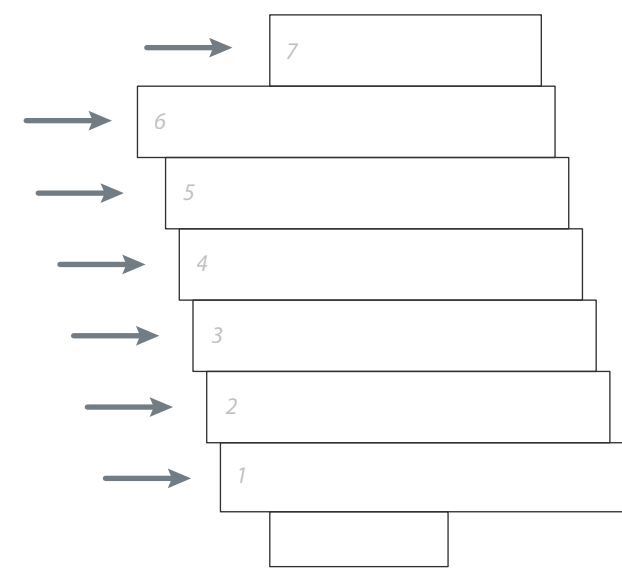
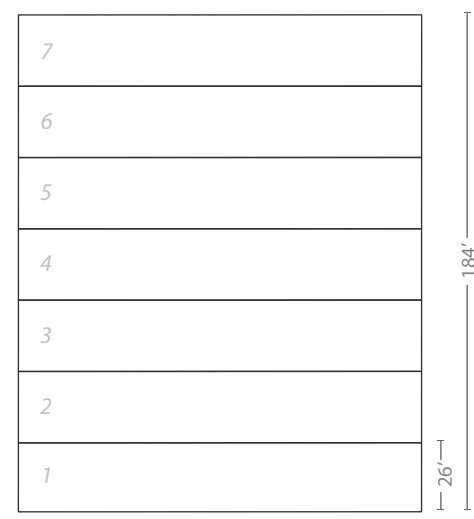






DESIGN CONCEPT



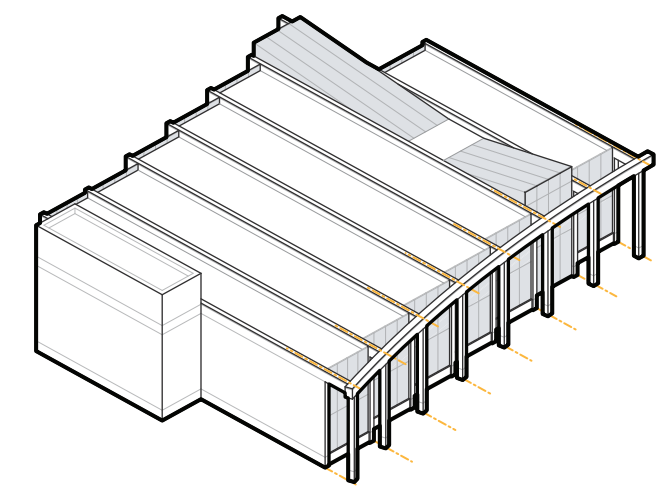
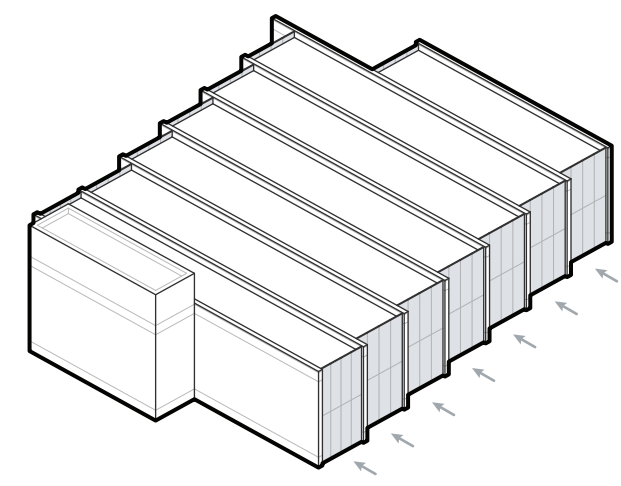
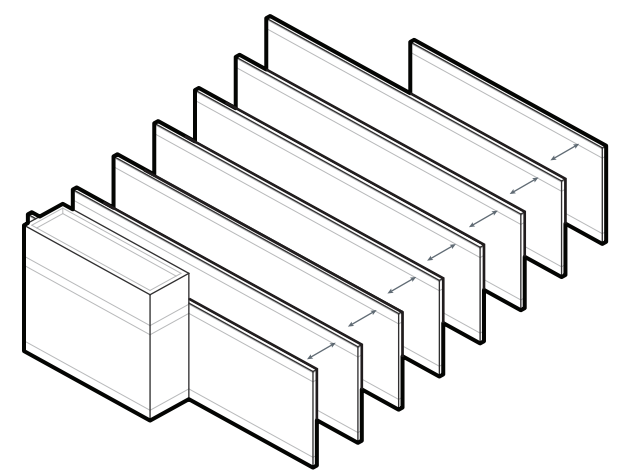
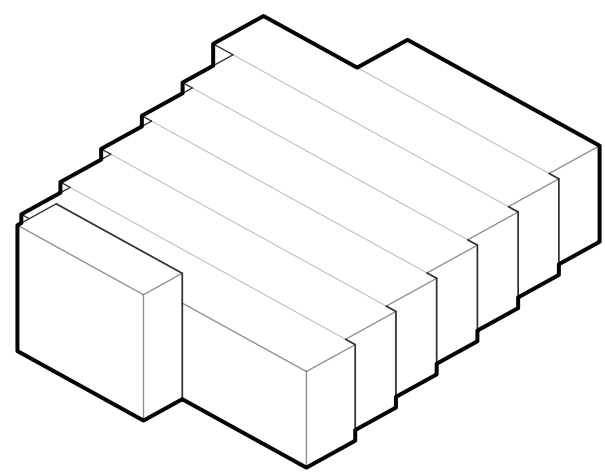


BUNDLES STATIC -----> BUNDLES DISRUPTED -----> BUNDLES UNIFIED

1

2

3



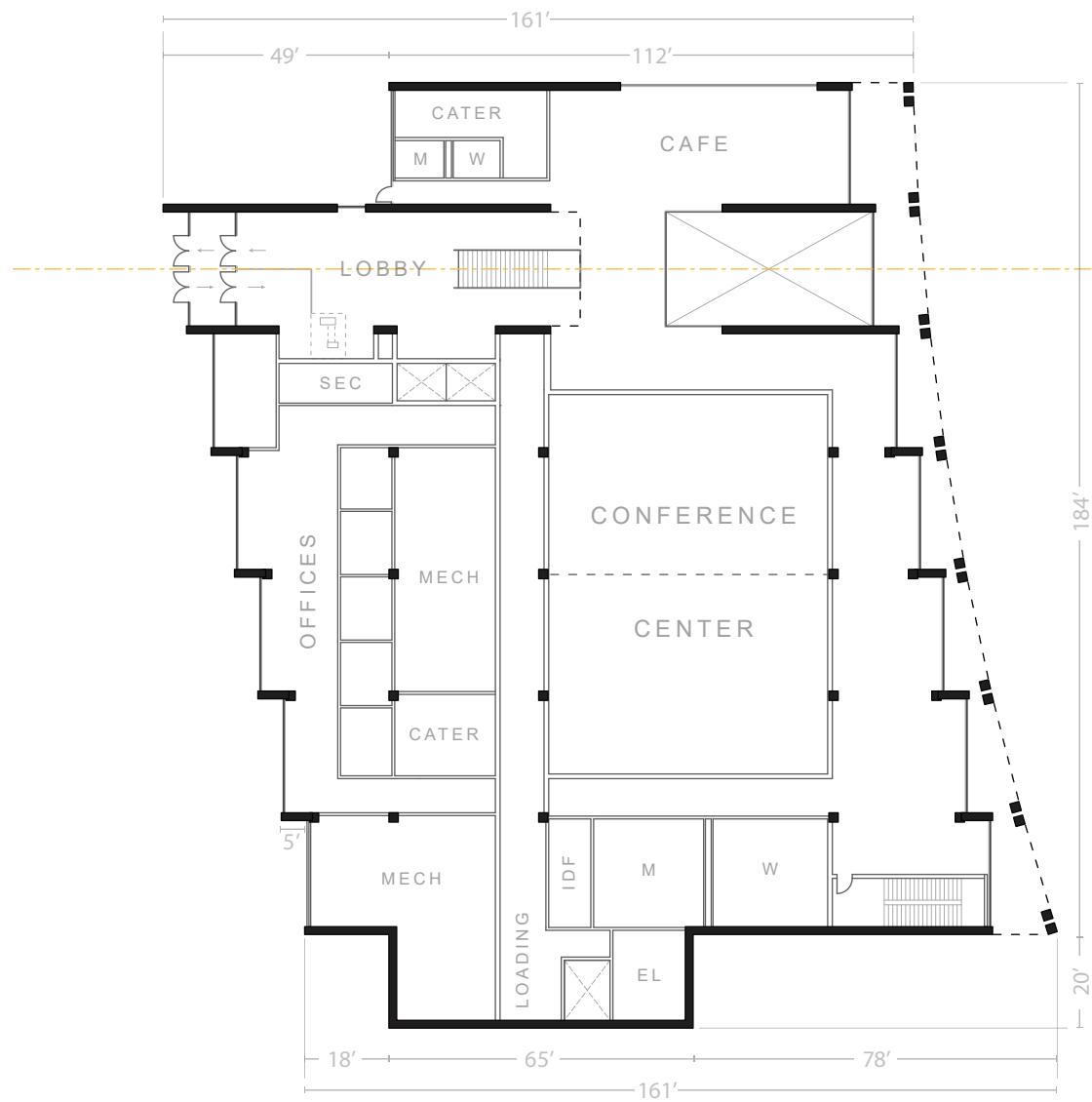
BUNDLES MASSED -----> DEFINED BY WALLS -----> VOIDS FILLED WITH GLAZING -----> UNIFIED BY COLONNADE

A

B

C

D

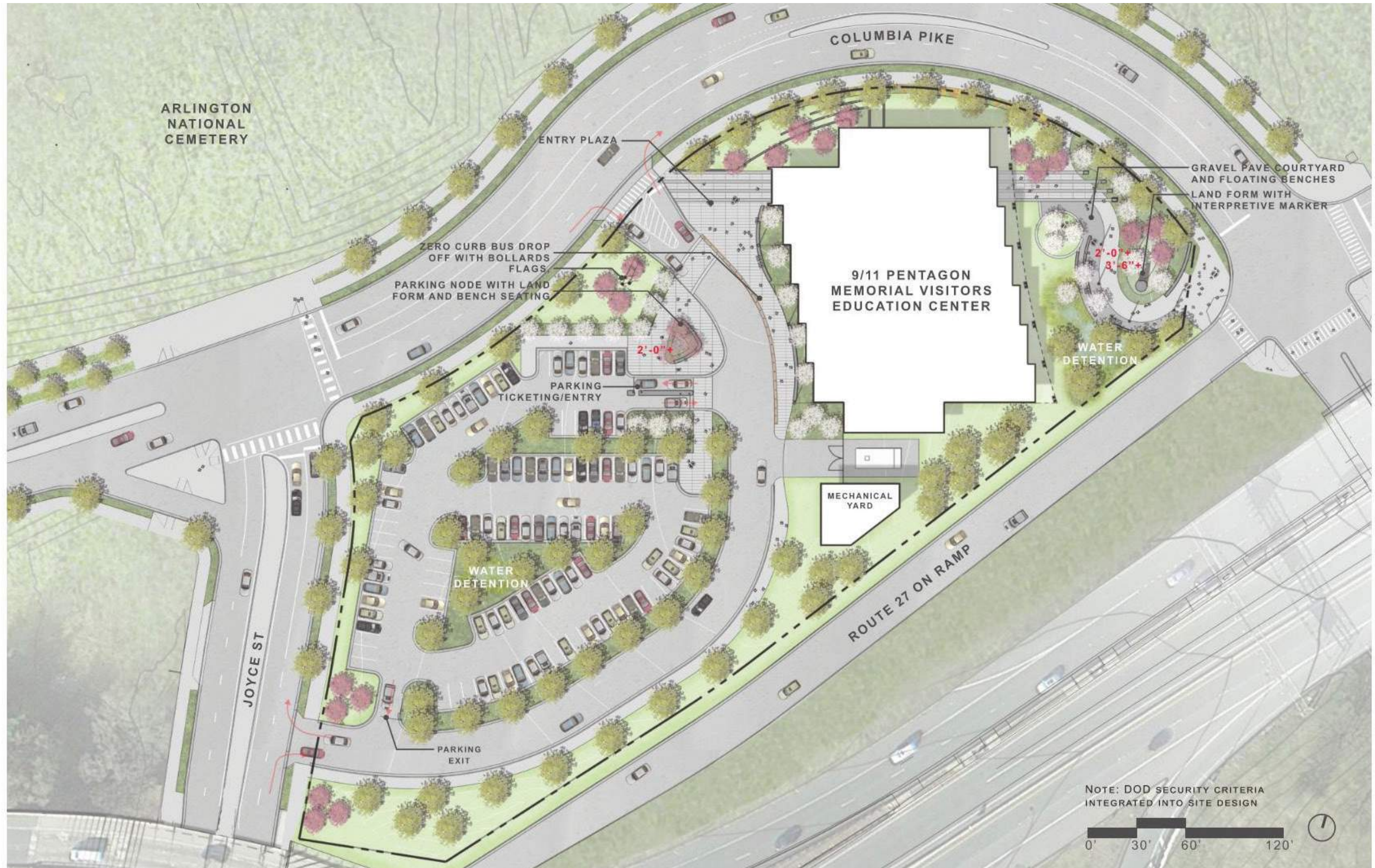


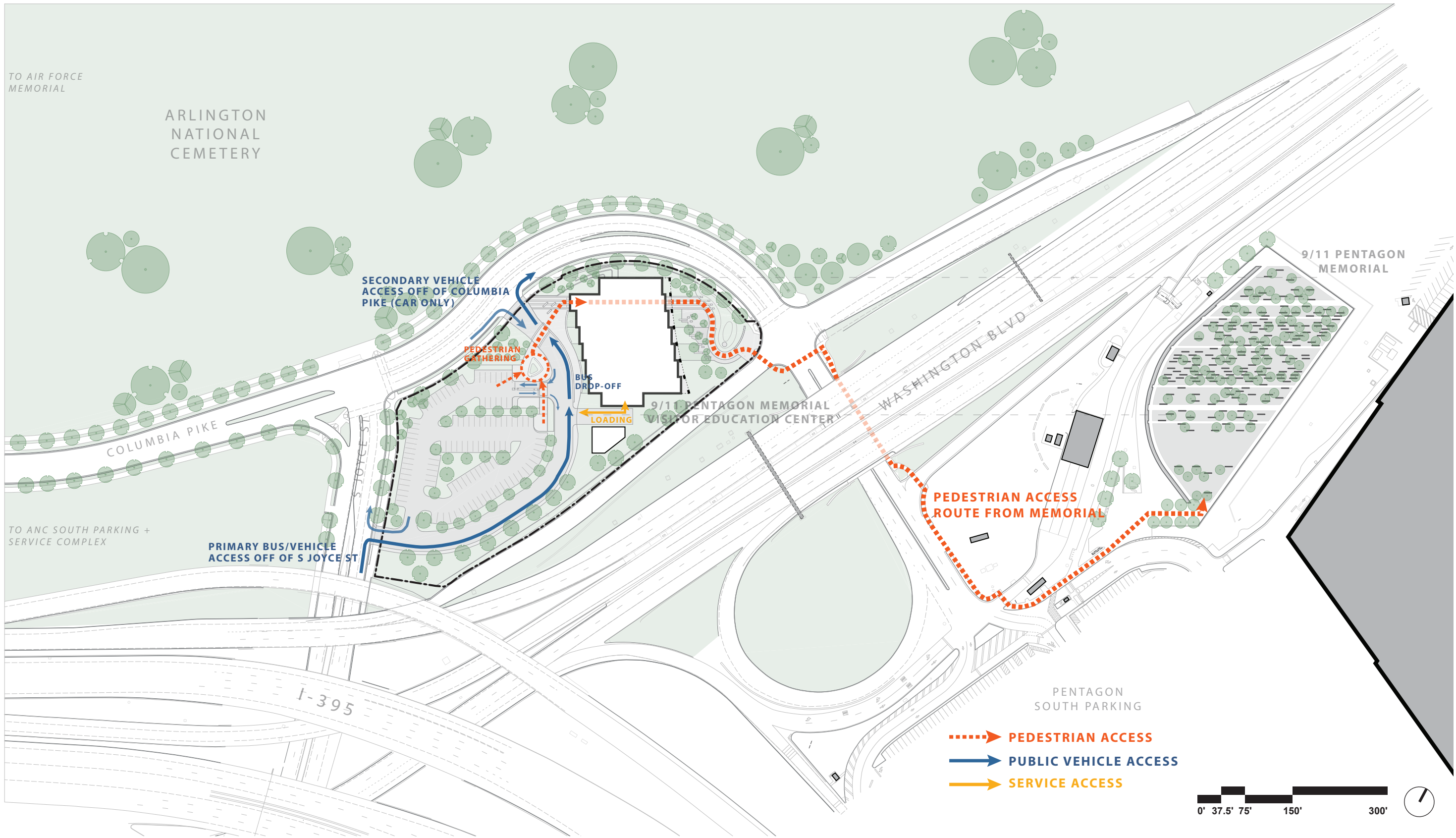
UPPER LEVEL

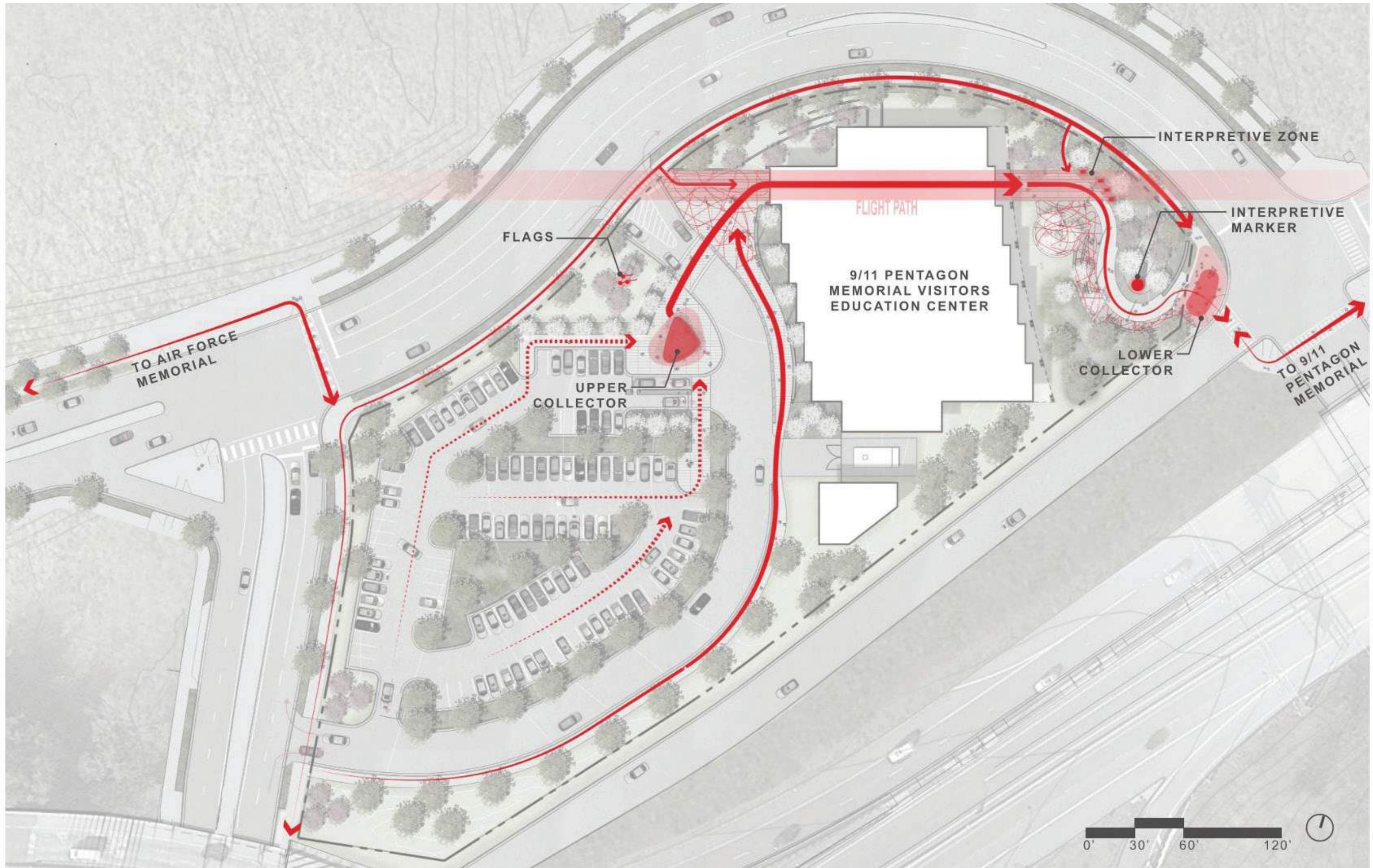


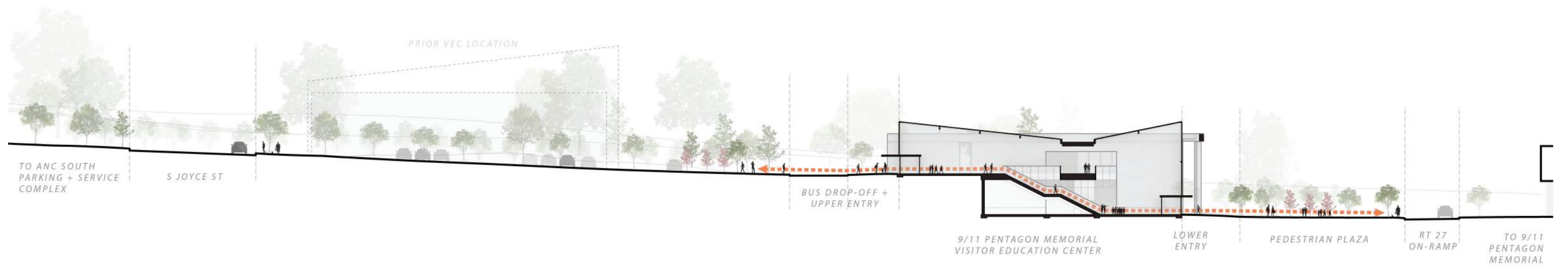
LOWER LEVEL







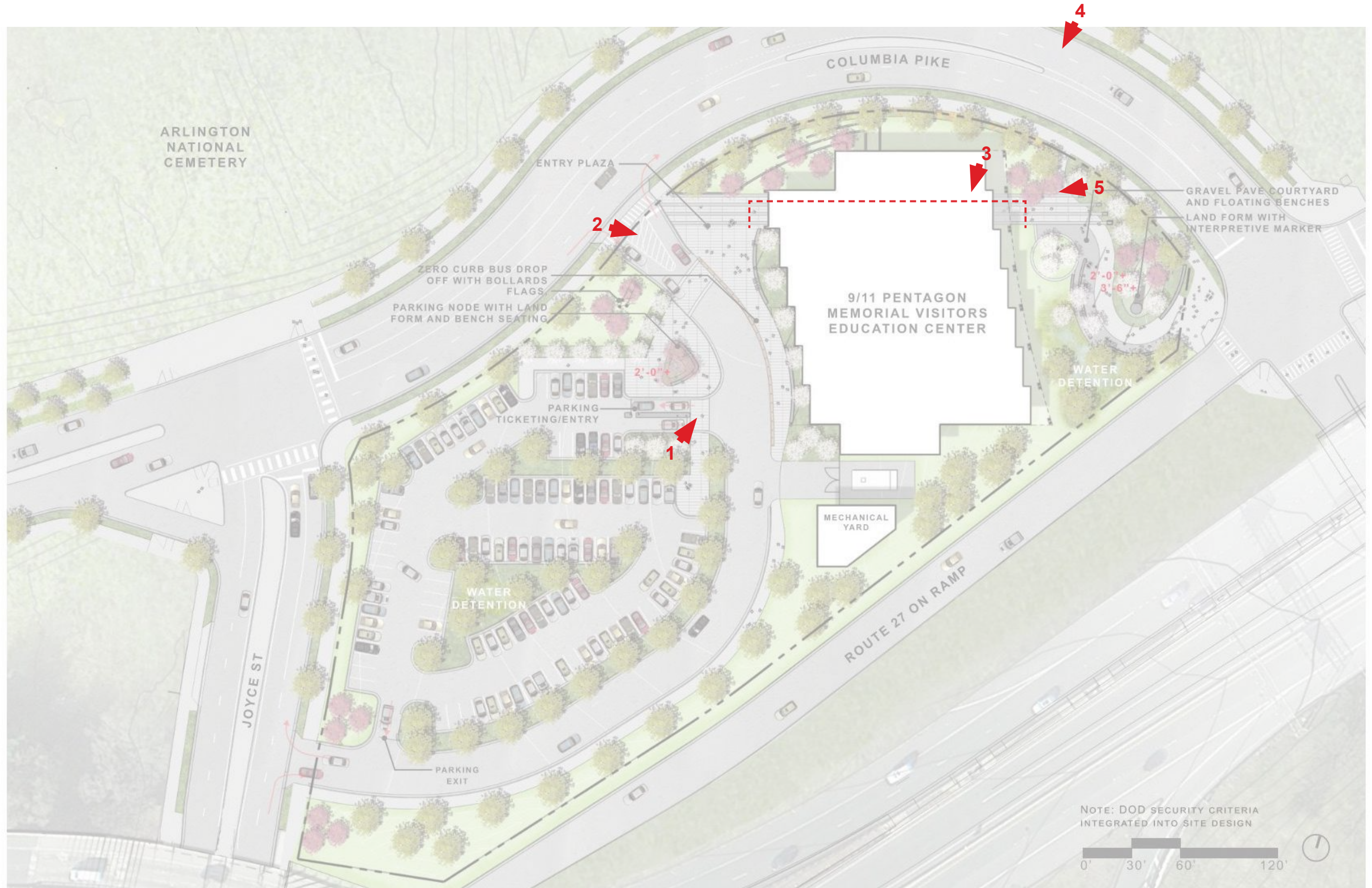


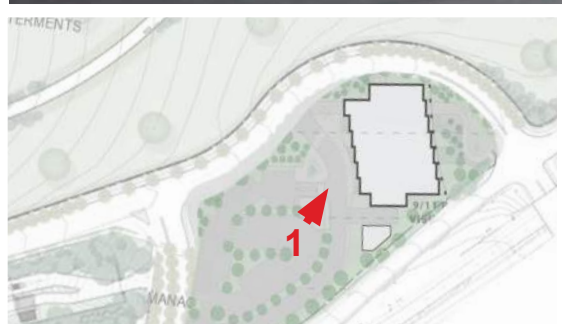


9/11 PENTAGON MEMORIAL
VISITOR EDUCATION CENTER
September 7, 2023

SITE SECTION
DESIGN CONCEPT - SITE CIRCULATION

PENTAGON MEMORIAL FUND
FENTRESS ARCHITECTS
CONFLUENCE



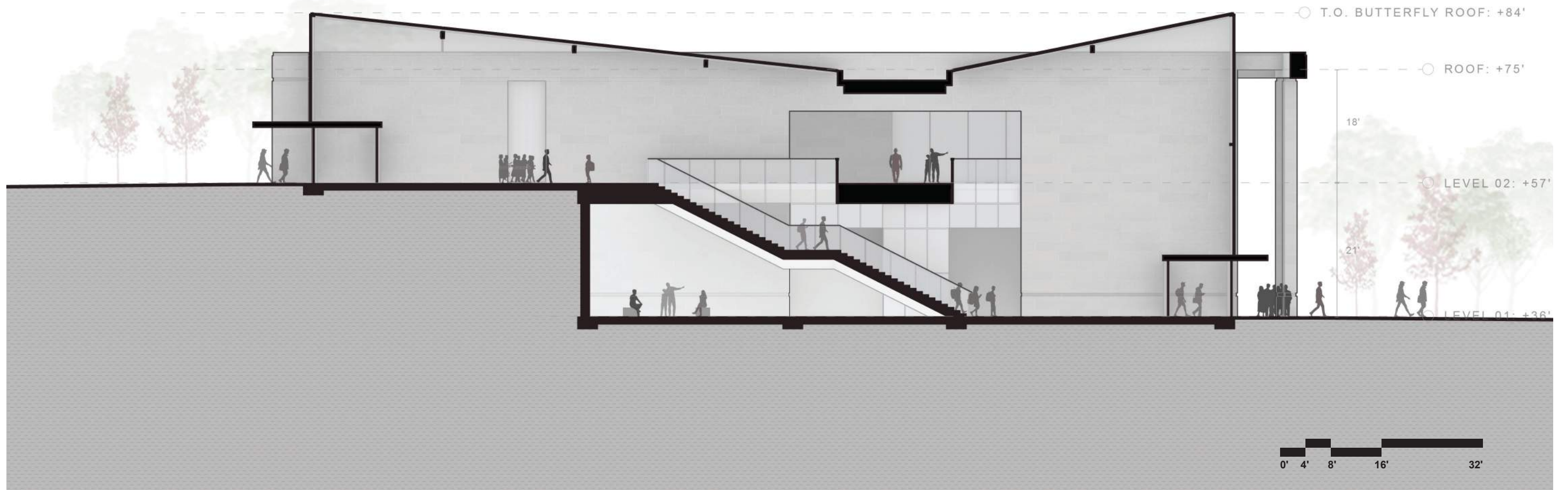


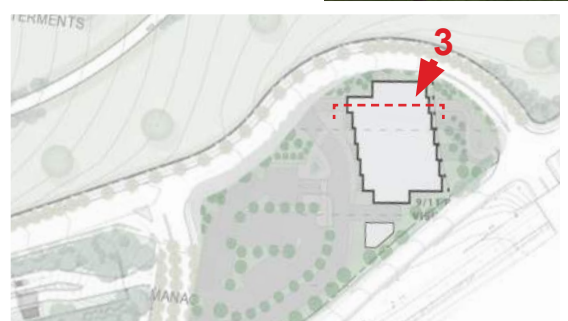
9/11 PENTAGON MEMORIAL
VISITOR EDUCATION CENTER
September 7, 2023

PERSPECTIVE 1: SOUTH FACADE
DESIGN CONCEPT

PENTAGON MEMORIAL FUND
FENTRESS ARCHITECTS
CONFLUENCE







9/11 PENTAGON MEMORIAL
VISITOR EDUCATION CENTER
September 7, 2023

PERSPECTIVE 3: SECTION THROUGH ATRIUM (FACING EAST)
DESIGN CONCEPT

PENTAGON MEMORIAL FUND
FENTRESS ARCHITECTS
CONFLUENCE



9/11 PENTAGON MEMORIAL
VISITOR EDUCATION CENTER
September 7, 2023

PERSPECTIVE 4: NORTH FACADE FROM COLUMBIA PIKE
DESIGN CONCEPT

PENTAGON MEMORIAL FUND
FENTRESS ARCHITECTS
CONFLUENCE

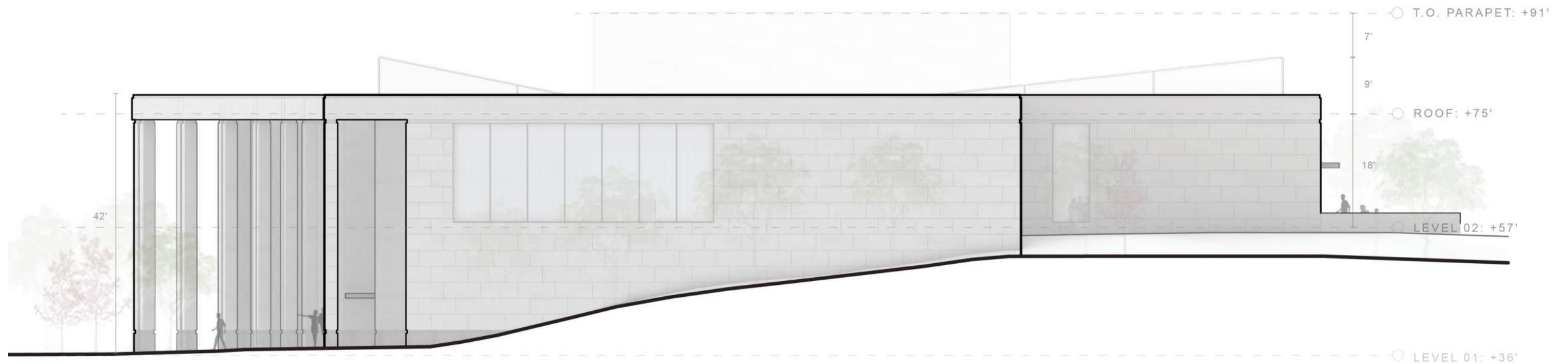


9/11 PENTAGON MEMORIAL
VISITOR EDUCATION CENTER
September 7, 2023

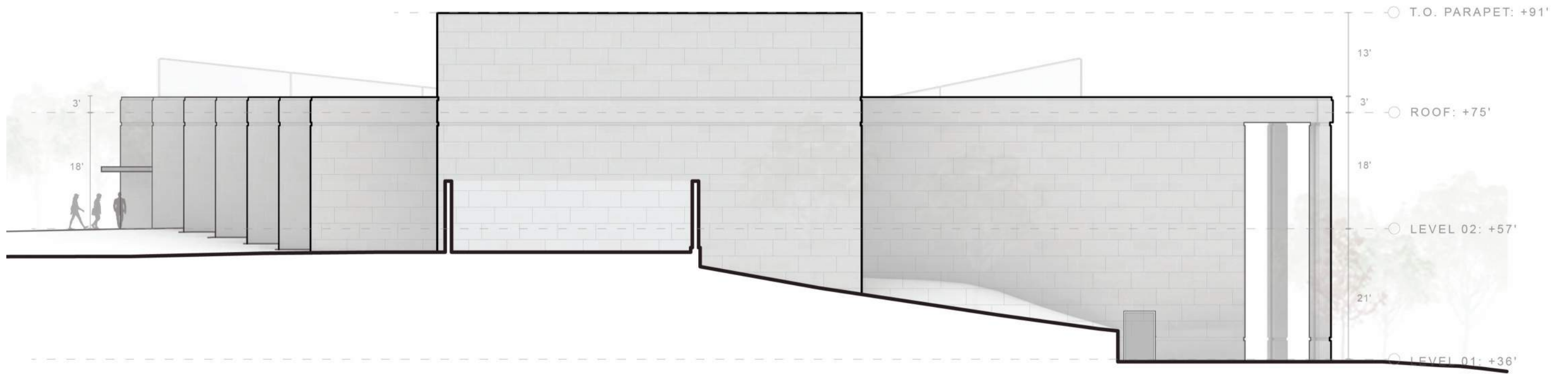
PERSPECTIVE 5: LOWER ENTRY + INTERPRETIVE PLAZA
DESIGN CONCEPT

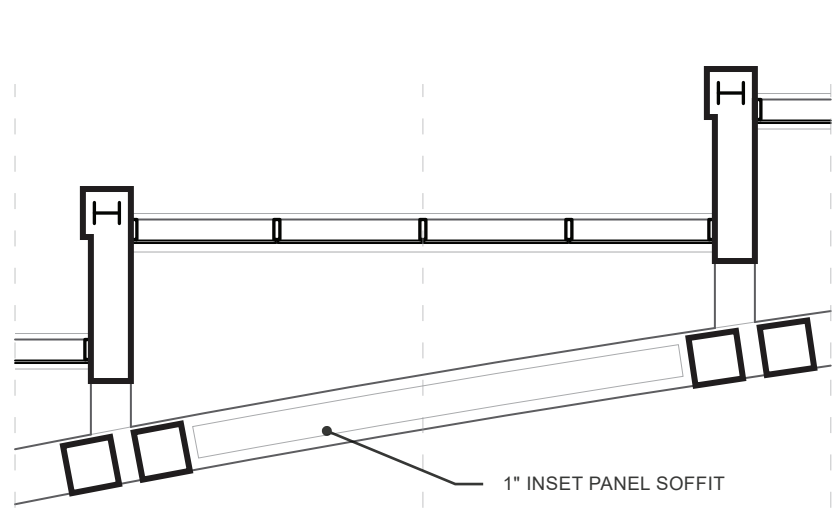
PENTAGON MEMORIAL FUND
FENTRESS ARCHITECTS
CONFLUENCE



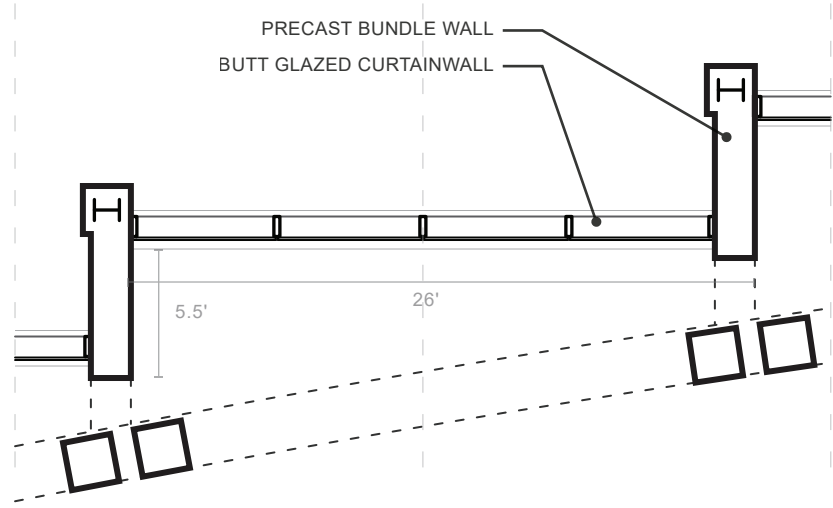




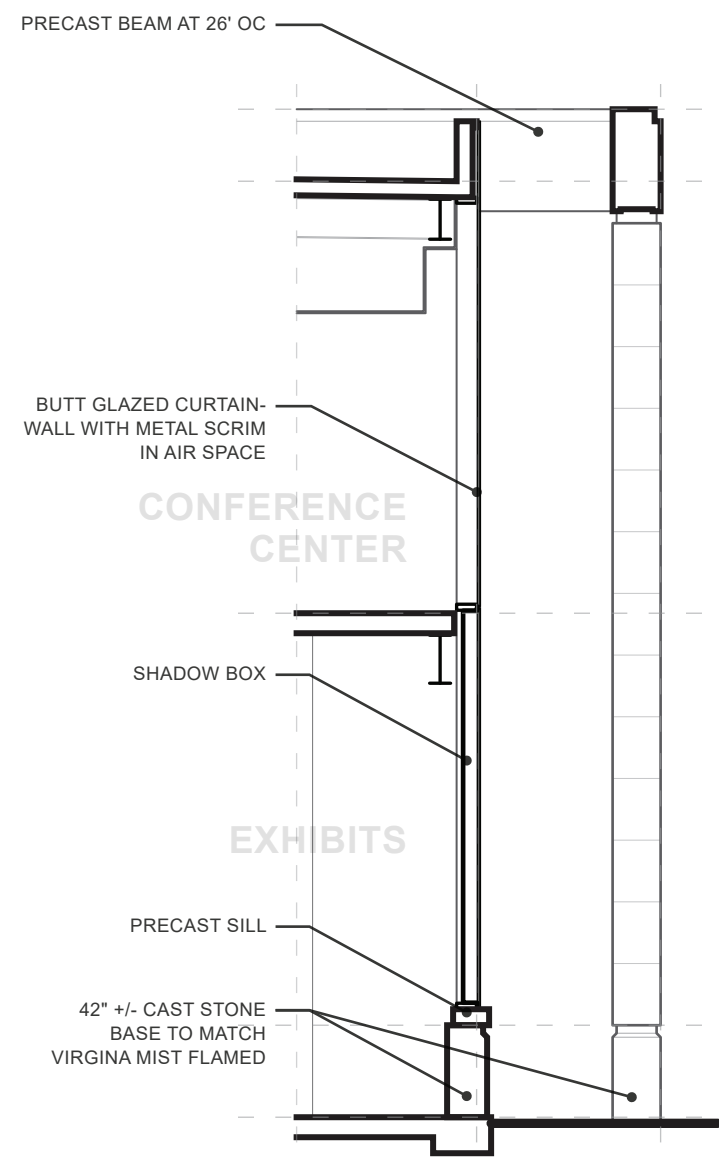




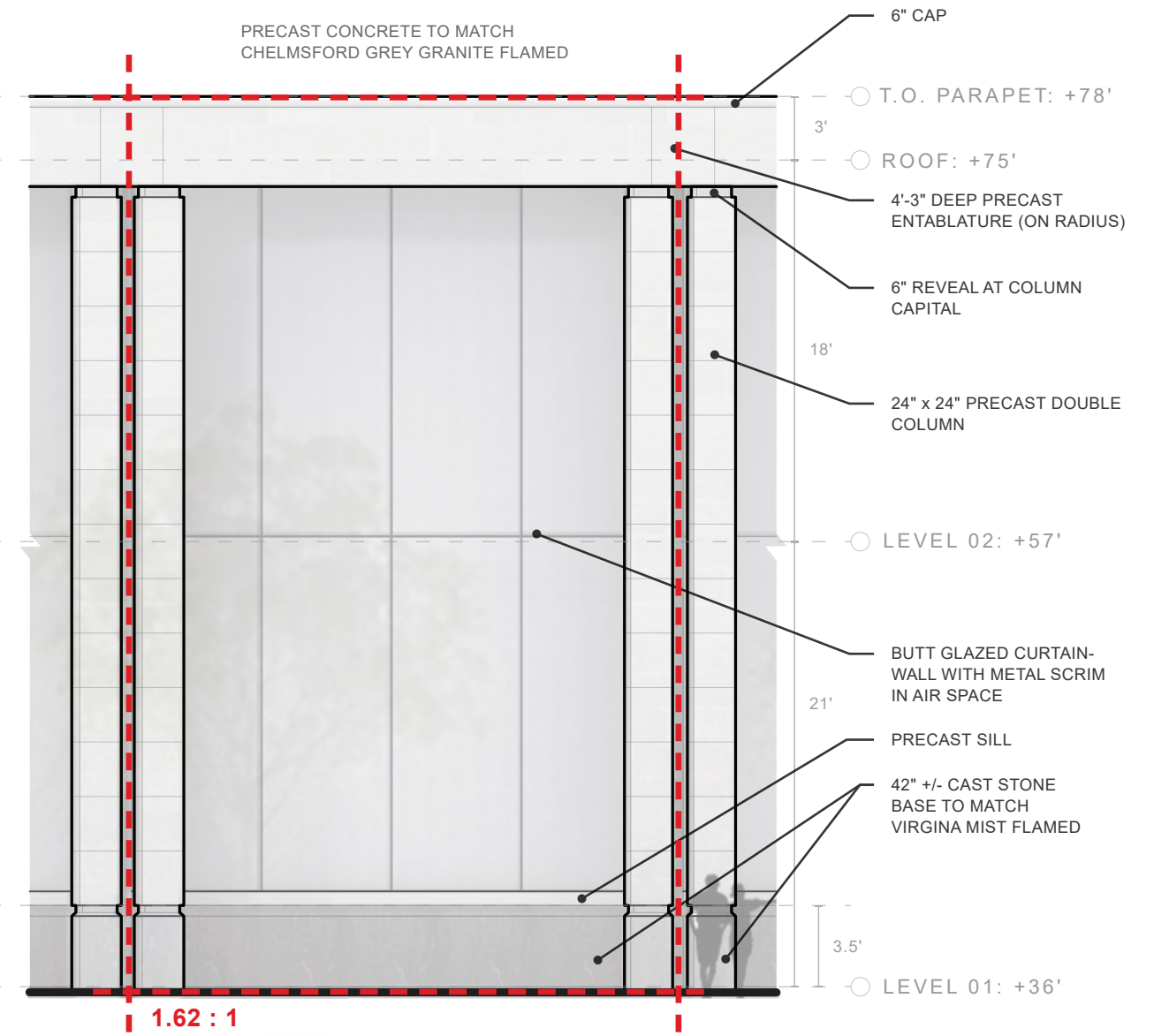
REFLECTED CEILING PLAN



PLAN



WALL SECTION



TYPICAL BAY ELEVATION



MATERIAL STUDY

DESIGN CONCEPT



PENTAGON 9/11 MEMORIAL
Arlington, VA - KBAS Studio

NATIONAL WWII MUSEUM
New Orleans, LA - Voorsanger Mathes

CARROLL A. CAMPBELL JR U.S. COURTHOUSE
Greenville, SC - HBRA Architects



UNITED STATES INSTITUTE OF PEACE
Washington, DC - Safdie Architects

AMERICAN PHARMACISTS ASSOCIATION HEADQUARTERS
Washington, DC - Hartman Cox Architects

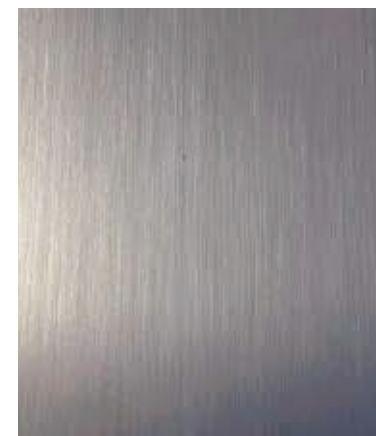
WILLIAM B. BRYANT US COURTHOUSE ANNEX
Washington, DC - Michael Graves



GLAZING: Metal Mesh Inner Layer
Increased Privacy + Controlling Views, Light Diffusion



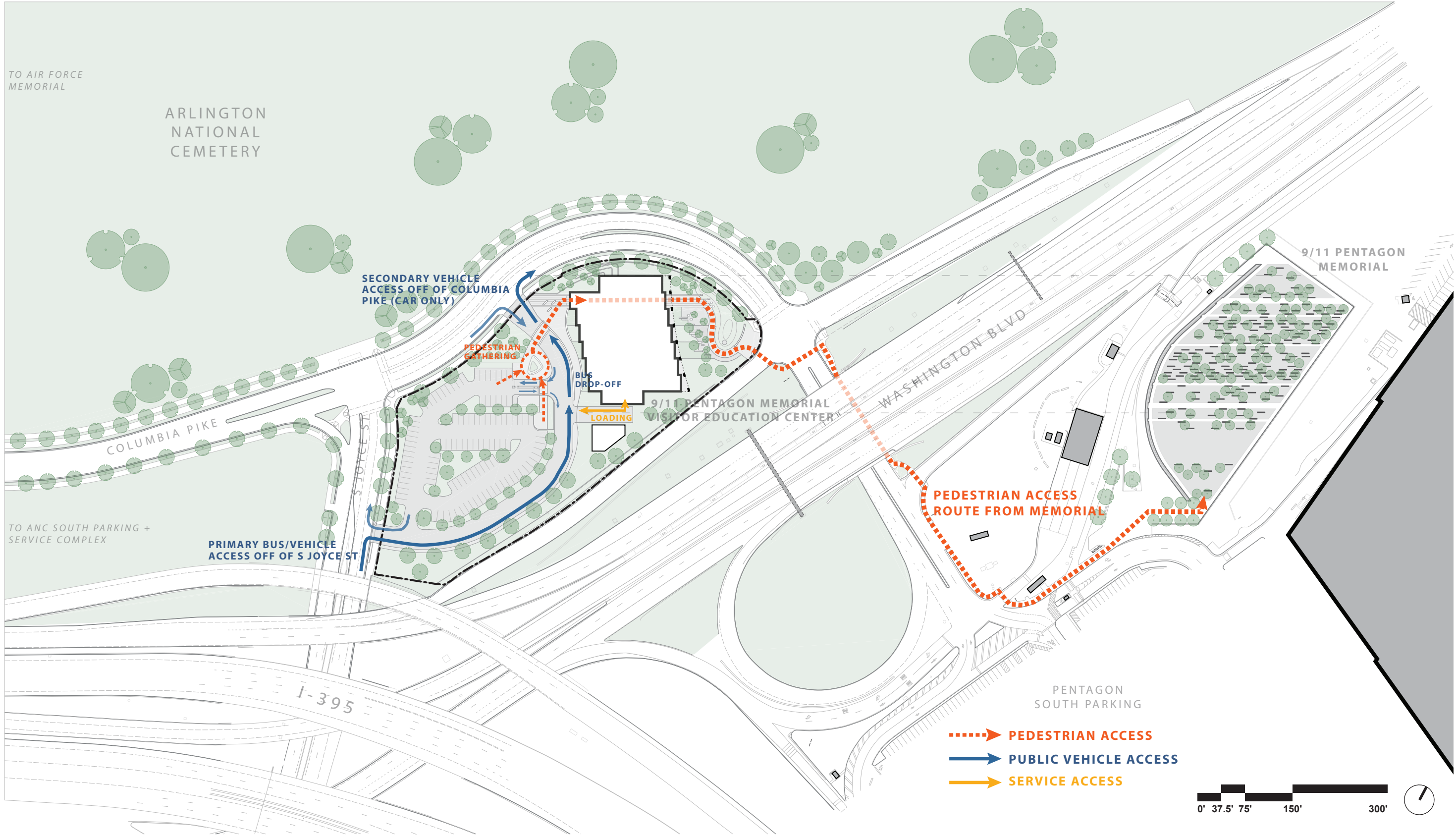
ARCHITECTURAL PRECAST + CAST STONE CLADDING: Chelmsford Grey, Virginia (Jet) Mist
Civic + Monumental Character, Relation to Context, Resistance to Weathering

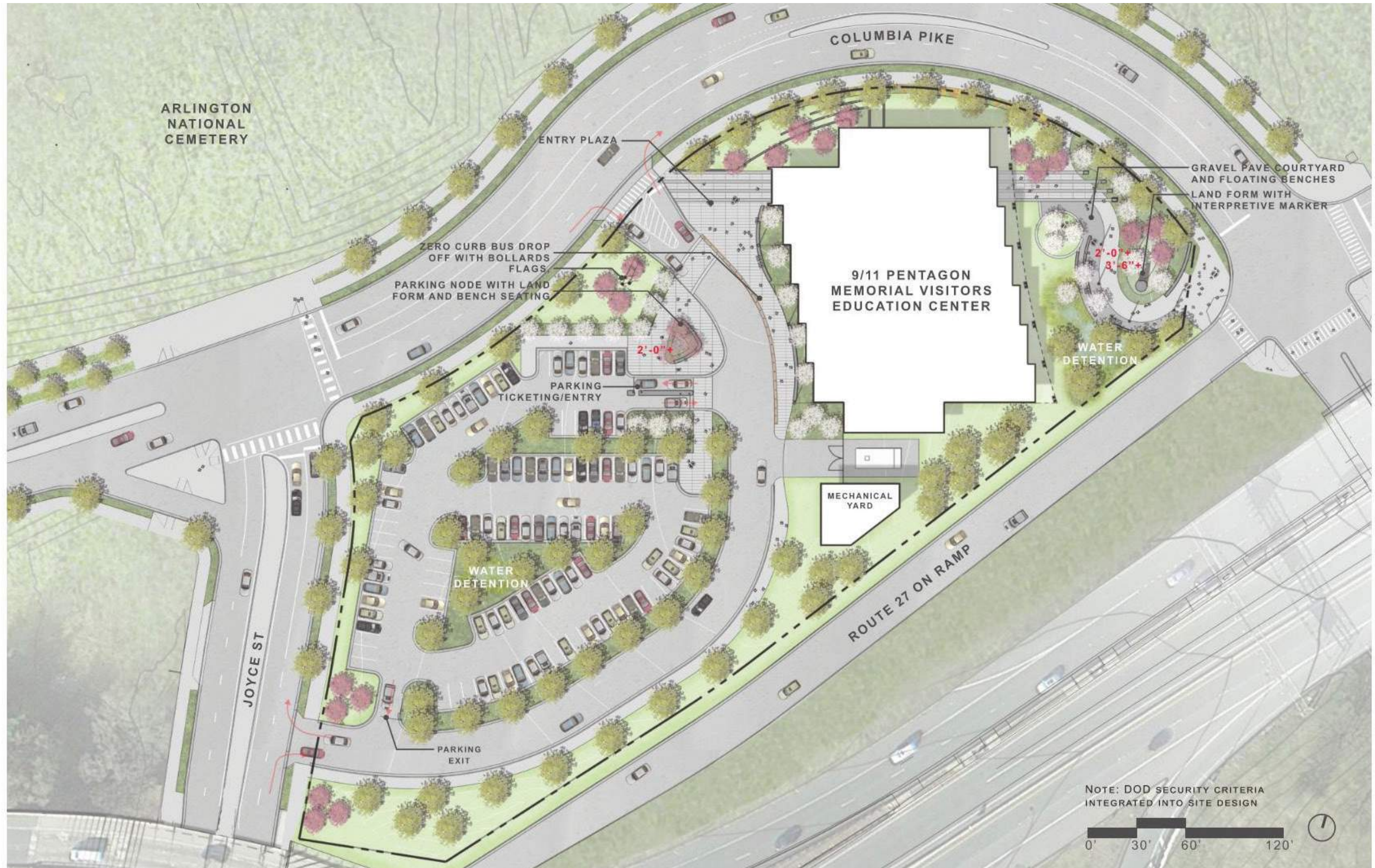


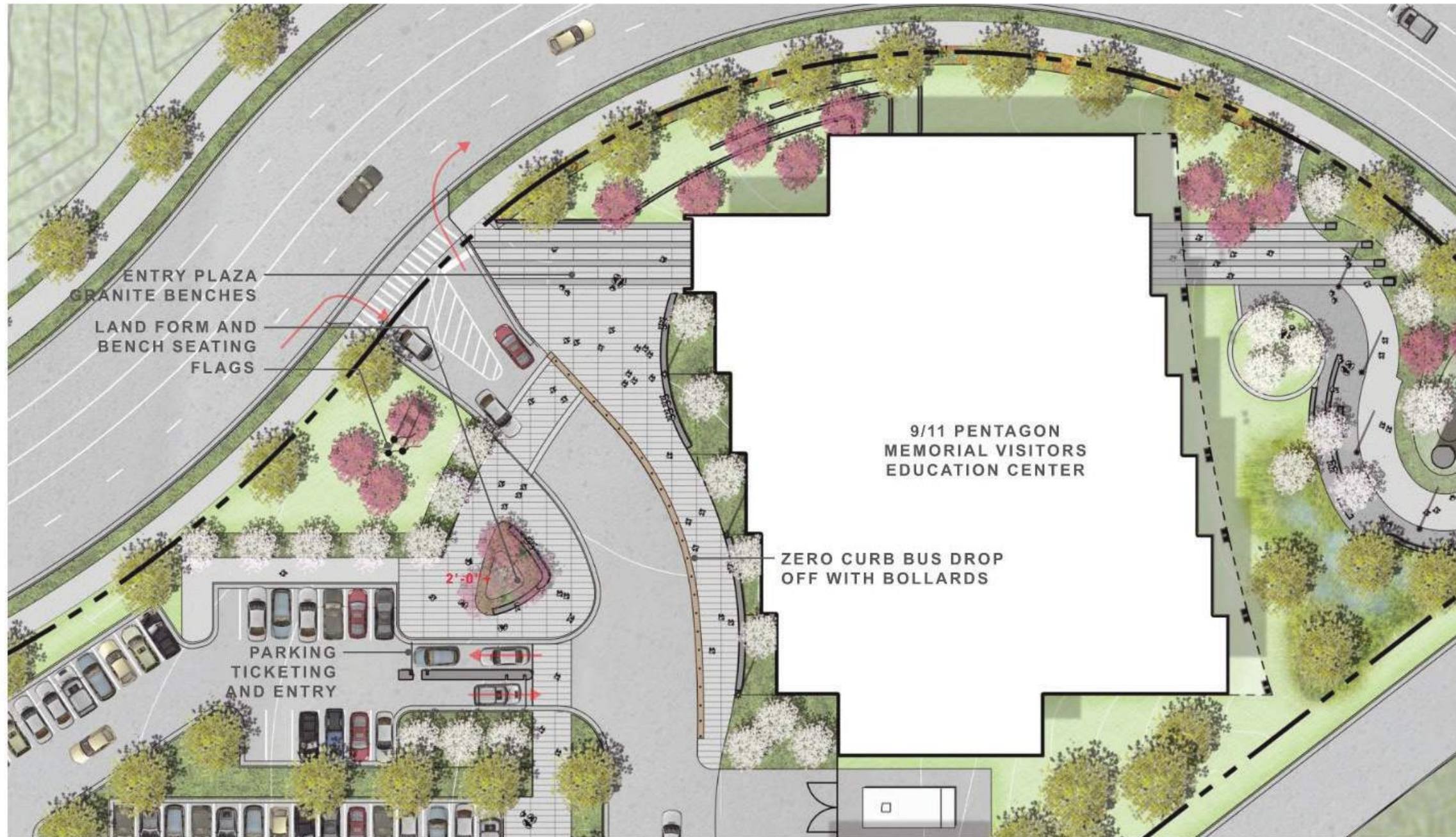
METAL: Brushed Stainless Steel "Gunmetal Grey"
Durability + Sheltering, Controlling Views

SITE + LANDSCAPE DESIGN

DESIGN CONCEPT



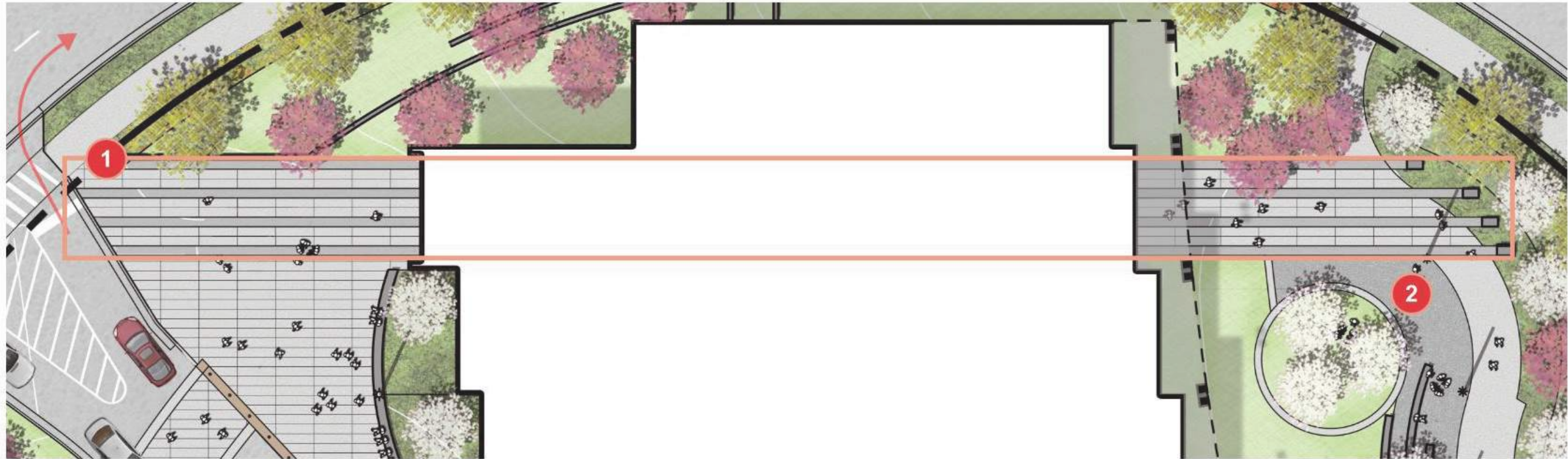


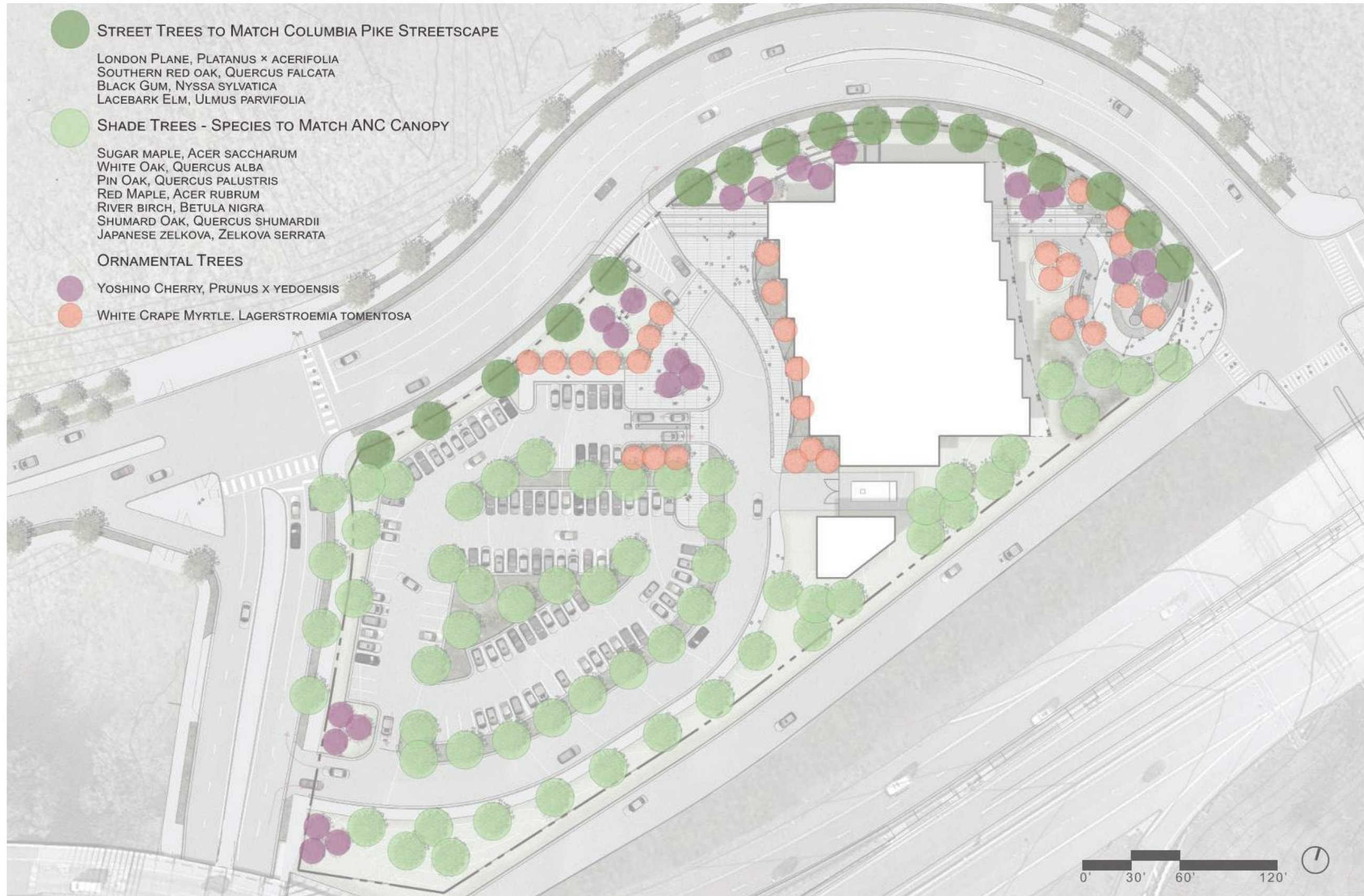


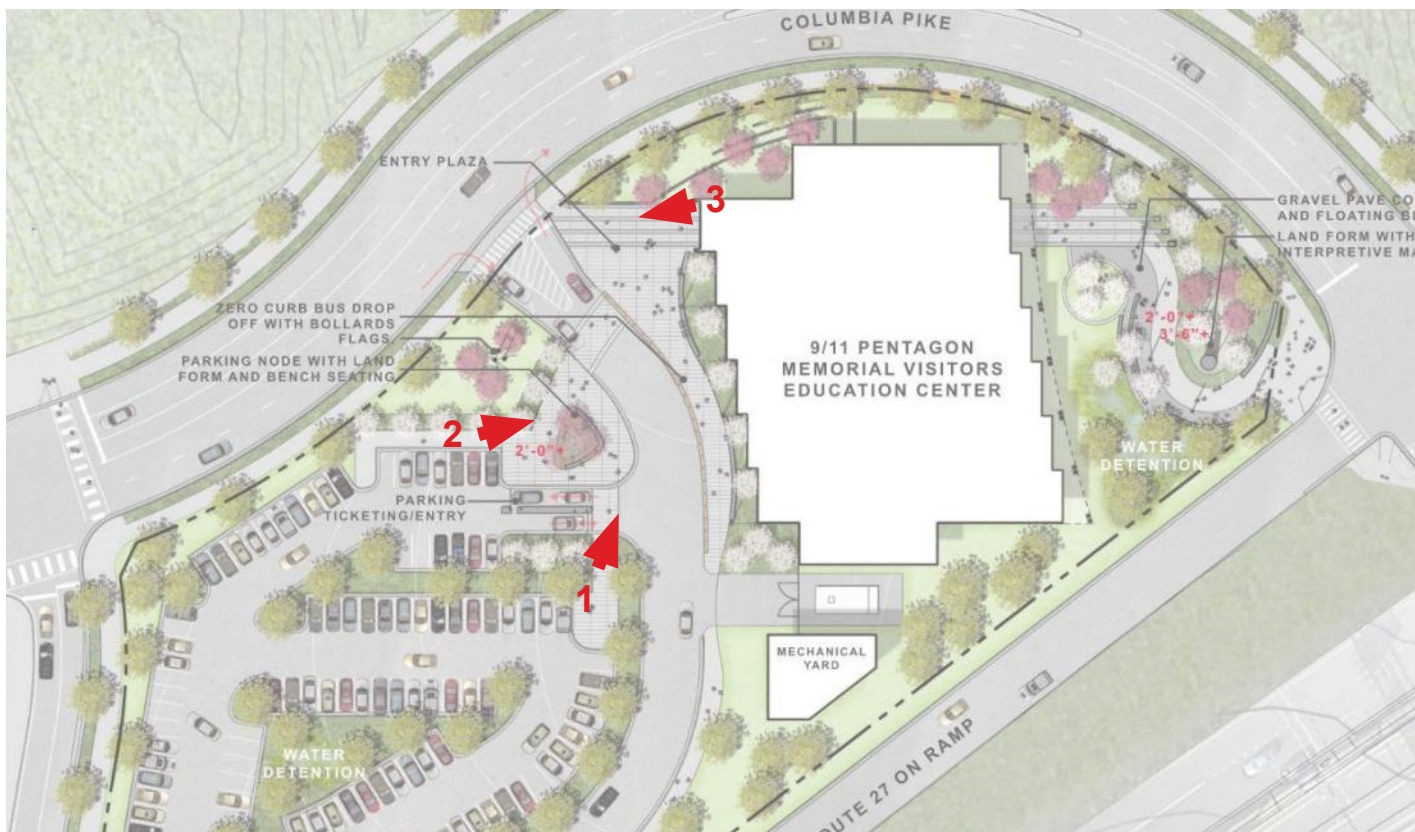


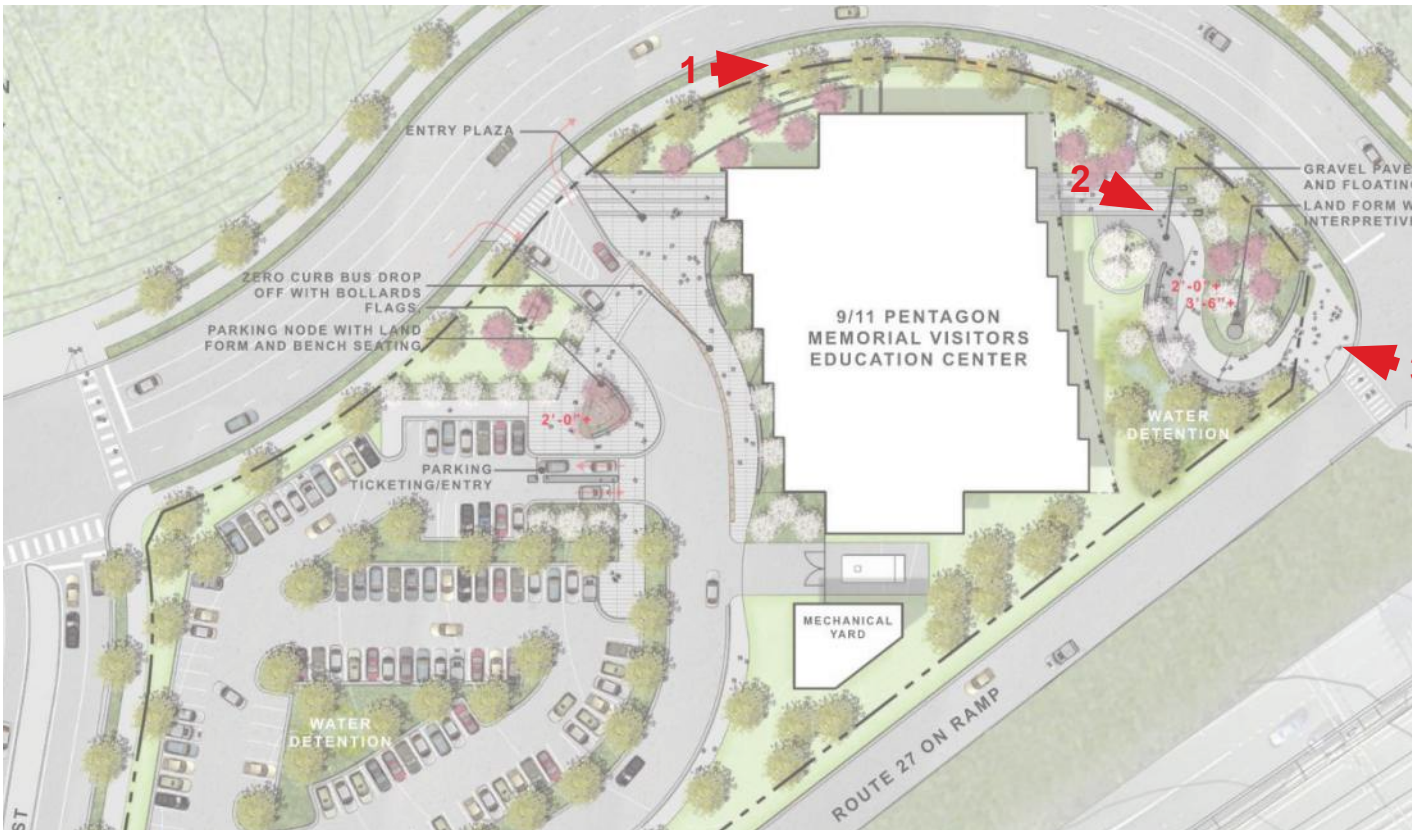






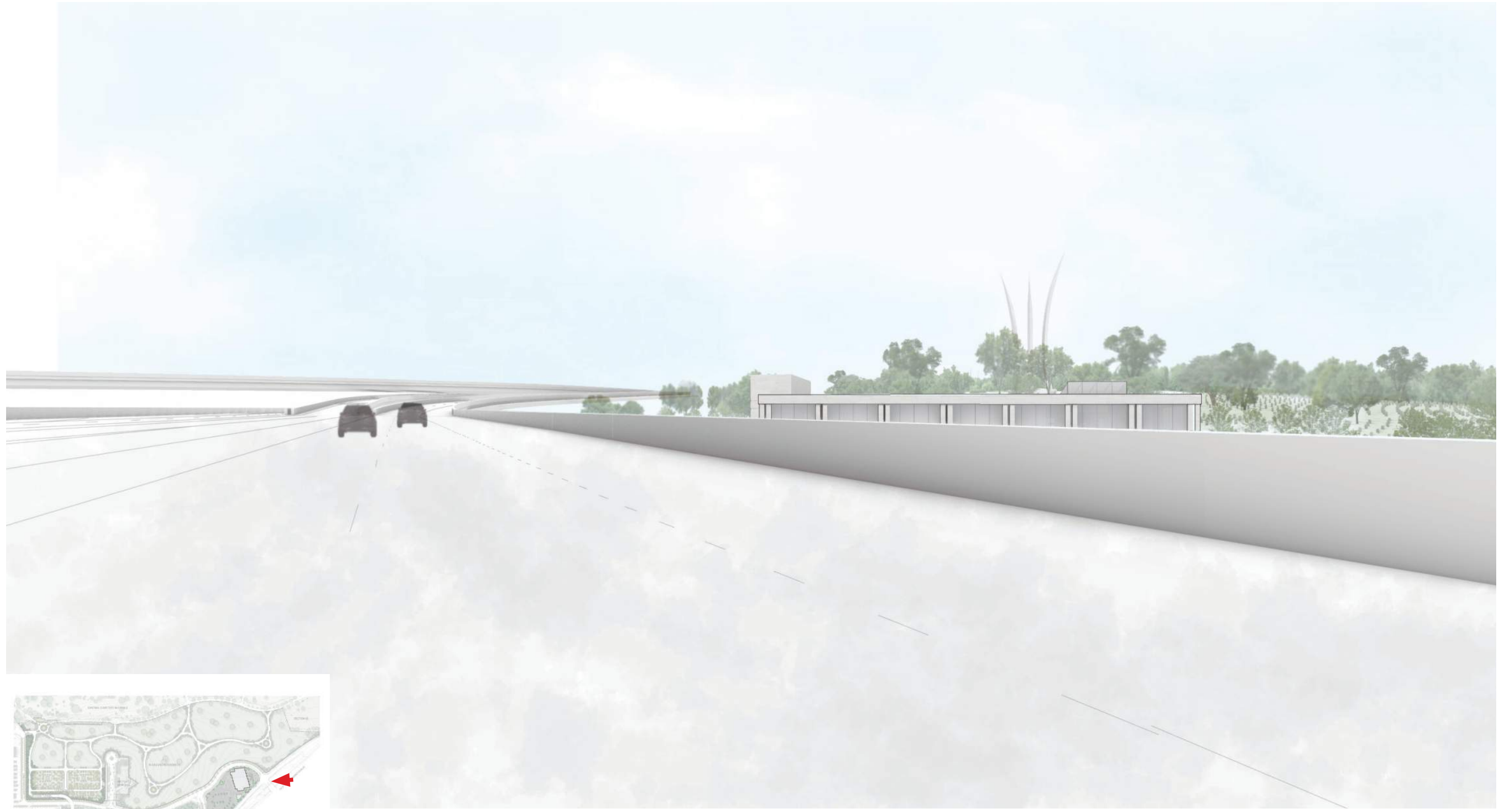






SITE + VIEWSHEDS

DESIGN CONCEPT













QUESTIONS + COMMENTS

