



# MARRINER S. ECCLES BUILDING AND FEDERAL RESERVE BOARD-EAST BUILDING RENOVATION AND EXPANSION

COMMISSION OF FINE ARTS - REVISED CONCEPT PACKAGE

JULY 2, 2020



FORTUS





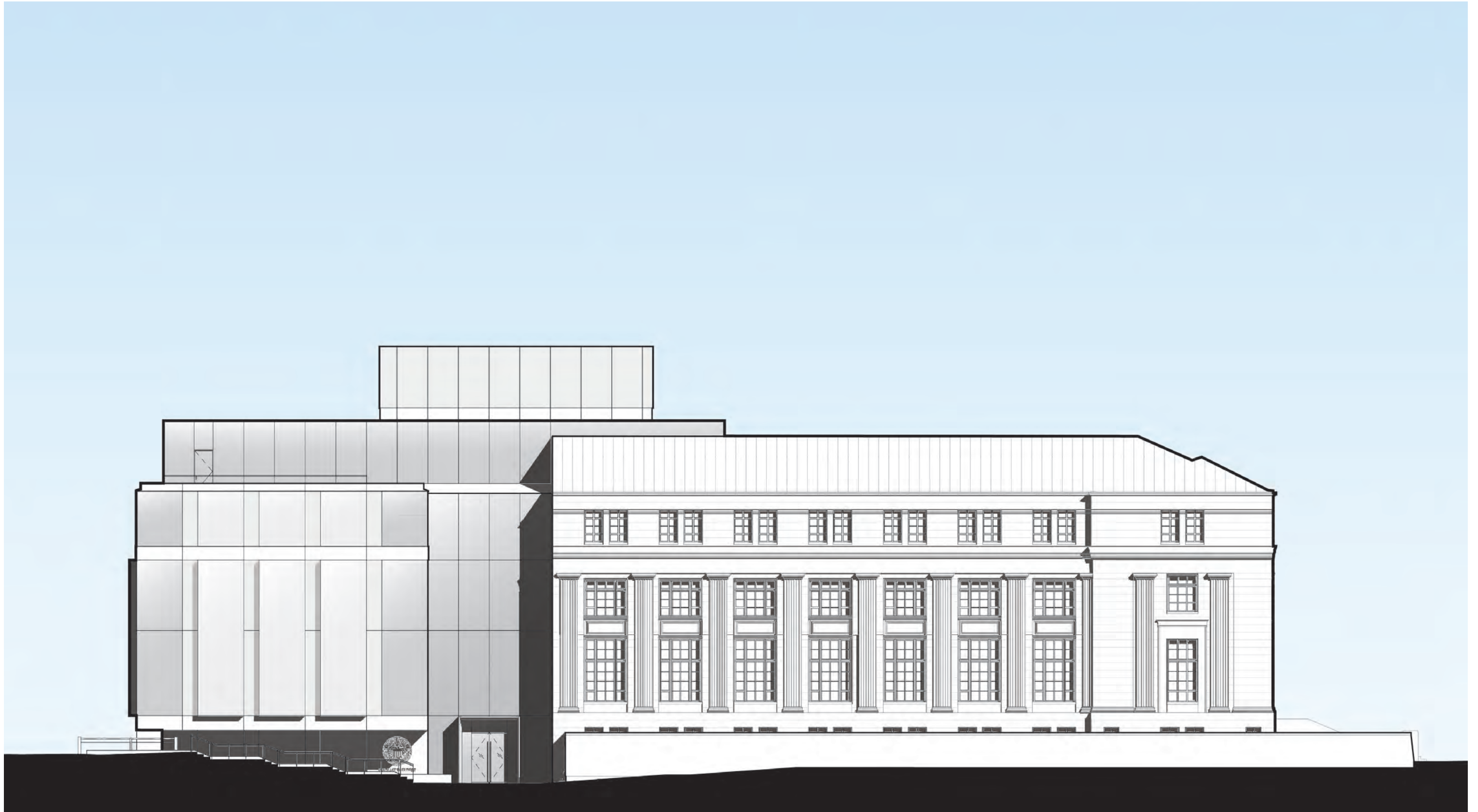
*FRB-East Building, southern facade.*

## FRB-EAST REFINEMENTS

- REFINEMENT OF THE CURTAIN WALL OF THE ADDITION TO THE HISTORIC BUILDING
- REDESIGN OF THE ENTRANCE TO FRB-EAST
- PRELIMINARY DESIGN OF THE FRB-EAST BUILDING EXTERIOR LIGHTING

## DESIGN GOALS

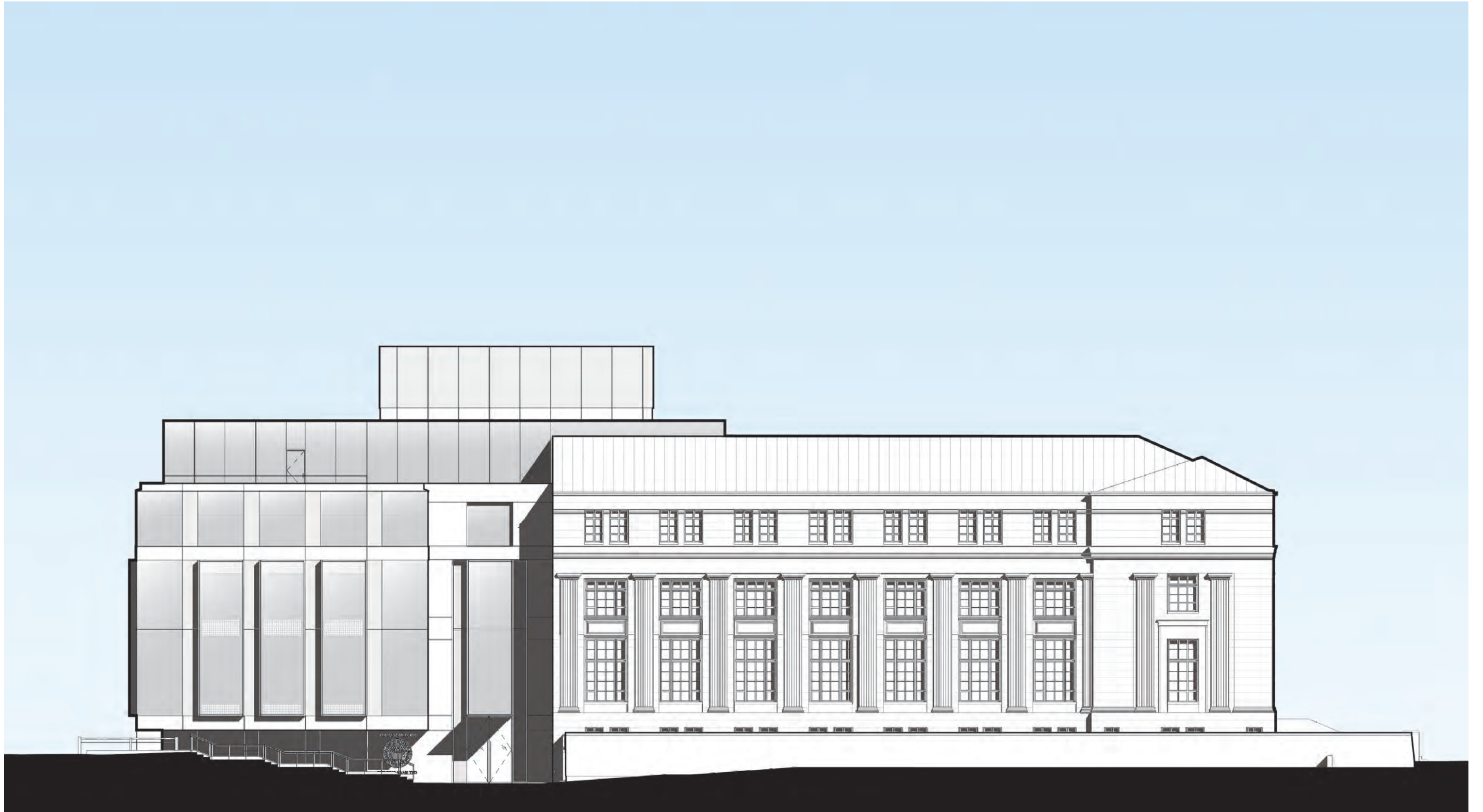
- THE NEW ADDITIONS SHOULD EMPHASIZE THE FEDERAL RESERVE'S CIVIC IMPORTANCE WHILE BEING MODEST AND RESTRAINED.
- WITHIN EACH BUILDING, THE ADDITIONS SHOULD BE A SIMPLE, CALM COMPOSITION THAT CREATES A MORE UNIFIED CHARACTER.
- THE ADDITIONS SHOULD RESPECT THE HISTORIC CHARACTER-DEFINING FEATURES, BUILT ON CLASSICAL PRINCIPALS BUT WITH CONTEMPORARY MATERIALS AND TECHNOLOGY.



WEST ELEVATION (AS PREVIOUSLY PRESENTED)

FRB-EAST ELEVATION DIAGRAM

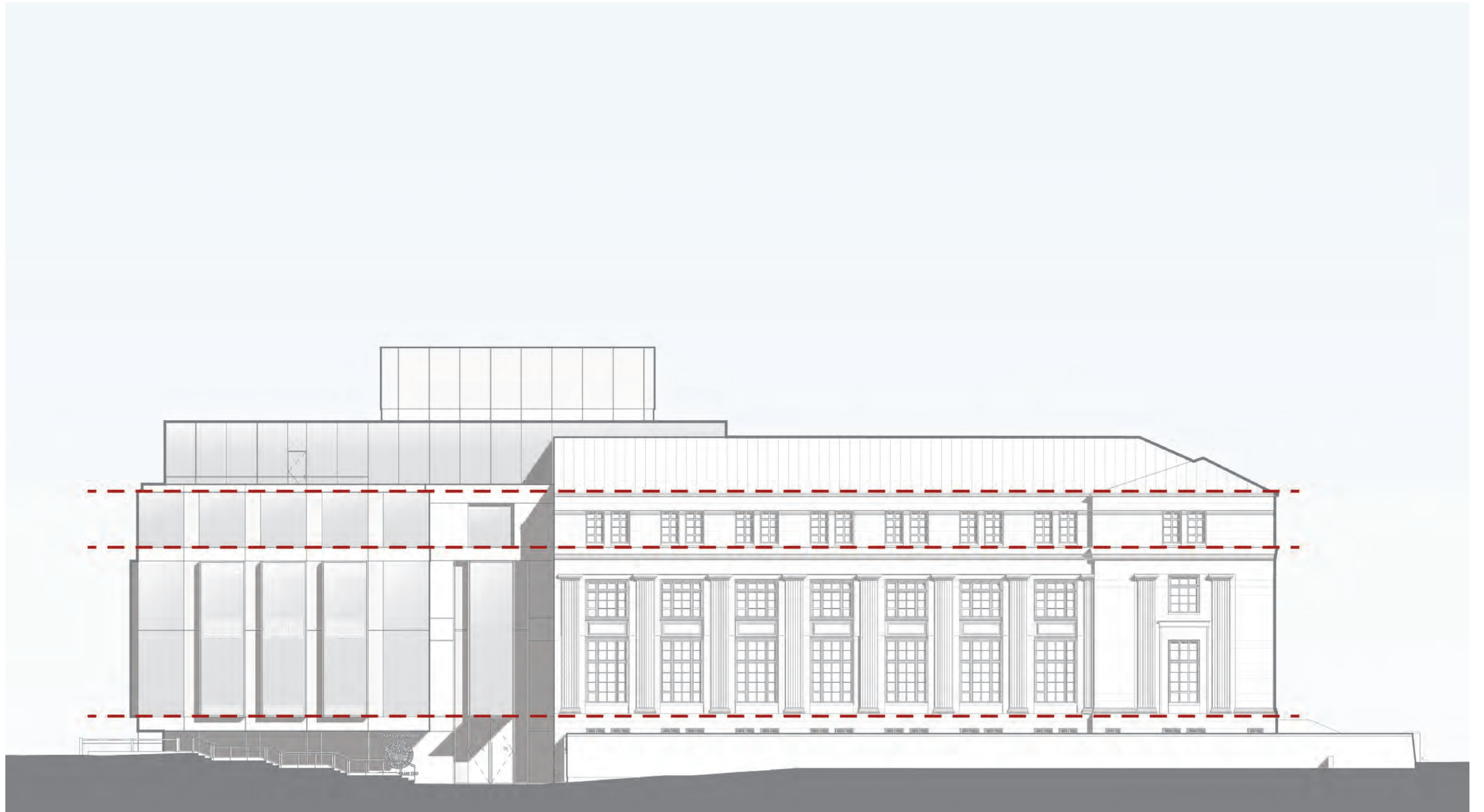




WEST ELEVATION (UPDATED)

FRB-EAST ELEVATION DIAGRAM

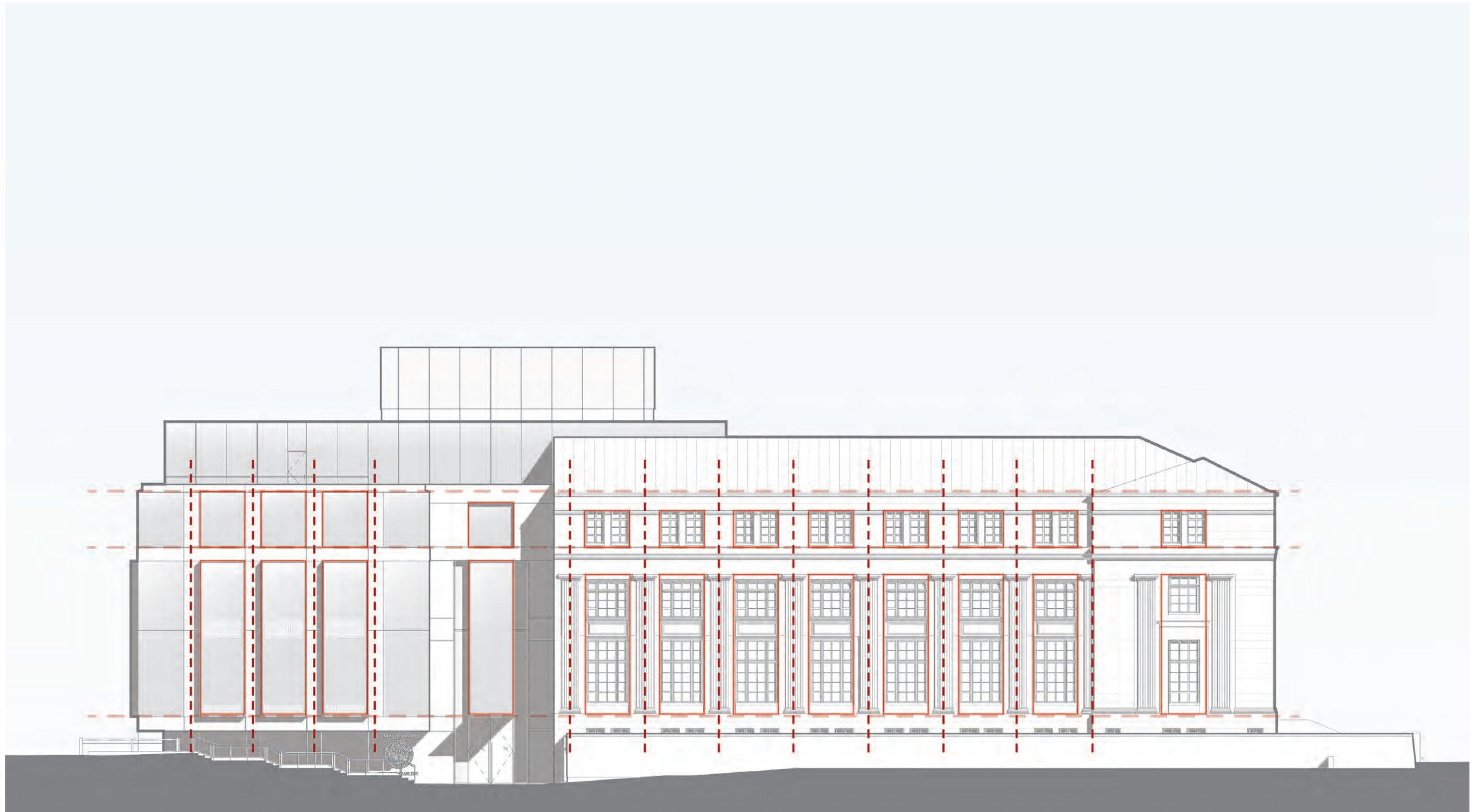




DATUM LINES OF FRB-EAST

FRB-EAST ELEVATION DIAGRAM

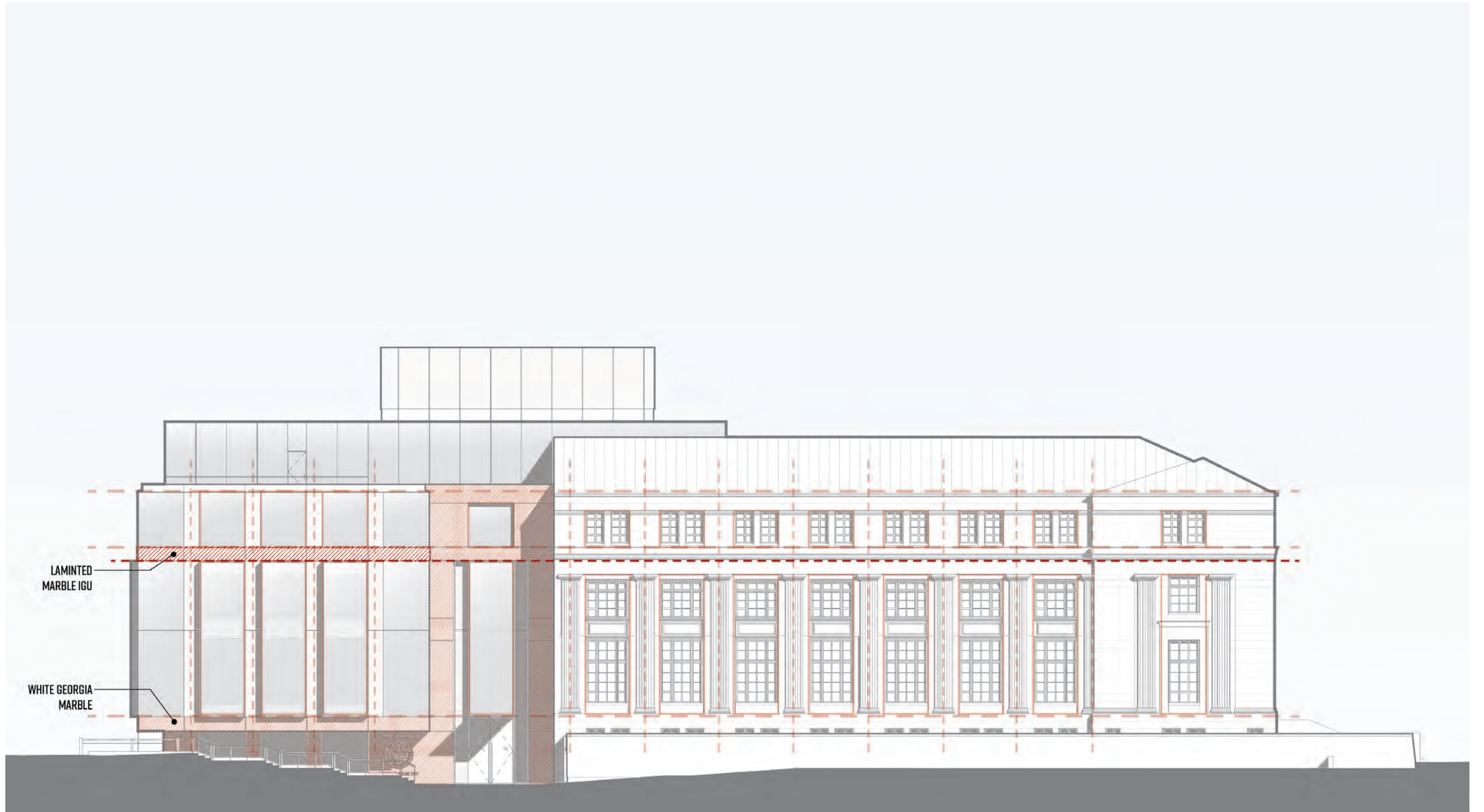




CONTINUING CADENCE OF FRB-EAST

FRB-EAST ELEVATION DIAGRAM





MATERIALITY - MARBLE

FRB-EAST ELEVATION DIAGRAM

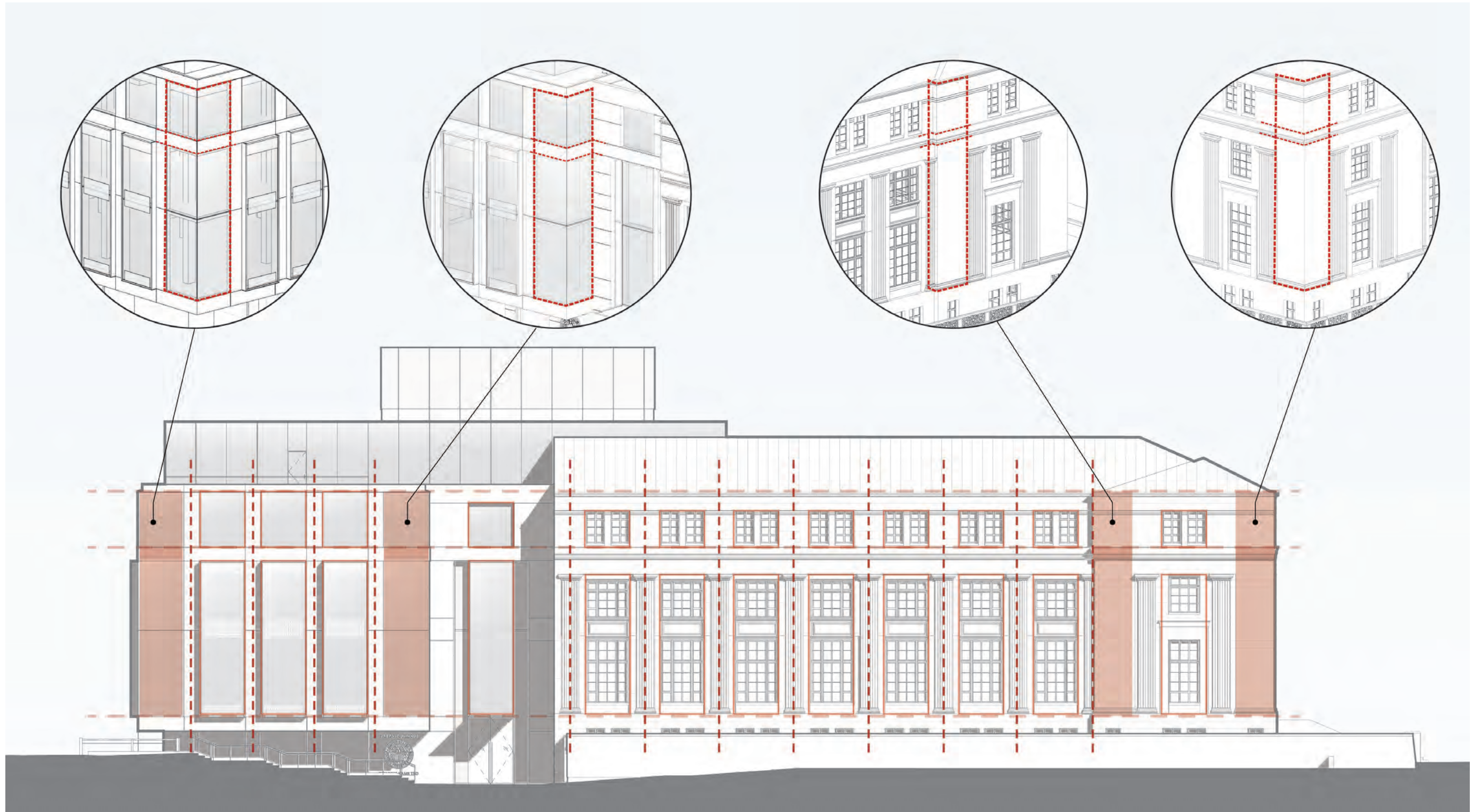




MATERIALITY - FRITTED GLASS

FRB-EAST ELEVATION DIAGRAM

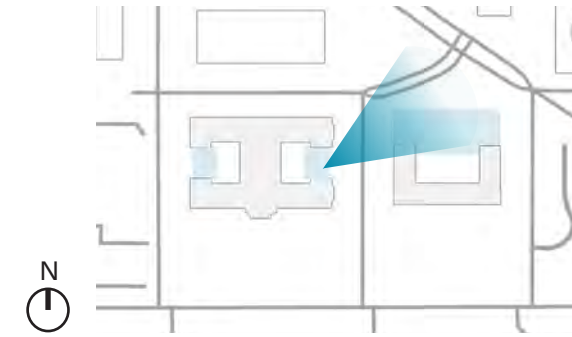




REPLICATING FLUSH CORNERS OF FRB-EAST

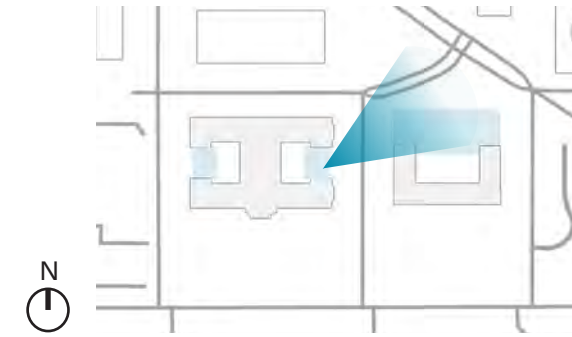
FRB-EAST ELEVATION DIAGRAM





**VIEW OF FRB-EAST ENTRANCE ON 20TH STREET** FROM CFA SUBMISSION MAY, 2020





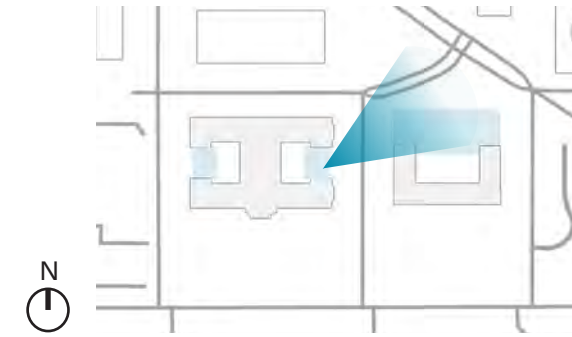
## REVISED VIEW OF FRB-EAST ENTRANCE ON 20TH STREET

JULY 2, 2020

ECCLES / FRB-EAST DESIGN | CFA PRESENTATION

FORTUS | BOARD OF GOVERNORS - THE FEDERAL RESERVE SYSTEM





## REVISED VIEW OF FRB-EAST ENTRANCE ON 20TH STREET NIGHTTIME

JULY 2, 2020

ECCLES / FRB-EAST DESIGN | CFA PRESENTATION

FORTUS | BOARD OF GOVERNORS - THE FEDERAL RESERVE SYSTEM

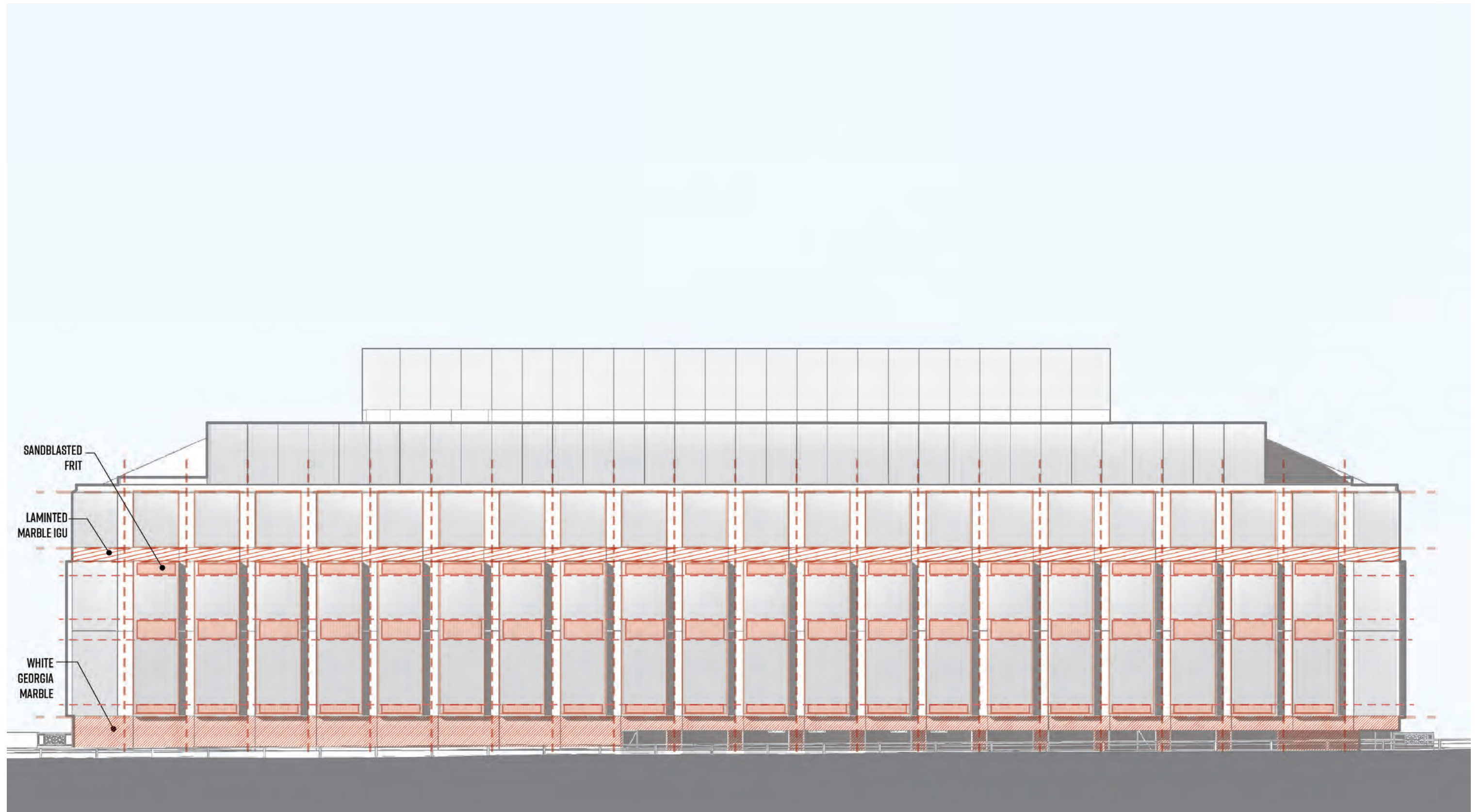




NORTH ELEVATION

FRB-EAST ELEVATION DIAGRAM





NORTH ELEVATION DIAGRAM

## FRB-EAST ELEVATION DIAGRAM





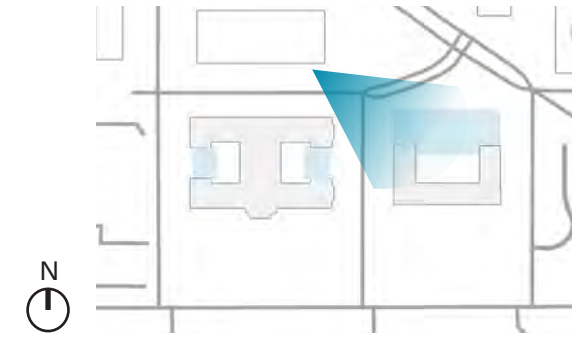
*FRB-EAST ADDITION BAYS PROJECT 14" FROM  
FACE OF ADJACENT GLAZING*



*FRB-EAST EXISTING WINDOWS SET BACK 14"  
FROM FACE OF PILASTERS*

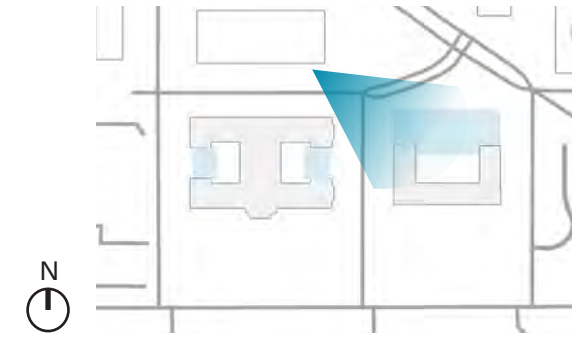
## FRB-EAST TYPICAL BAYS





**PERSPECTIVE FROM C ST AND 20TH STREET** FROM CFA SUBMISSION MAY, 2020





## REVISED PERSPECTIVE FROM C ST AND 20TH STREET

JULY 2, 2020


ECCLES / FRB-EAST DESIGN | CFA PRESENTATION

FORTUS | BOARD OF GOVERNORS - THE FEDERAL RESERVE SYSTEM



GLAZING

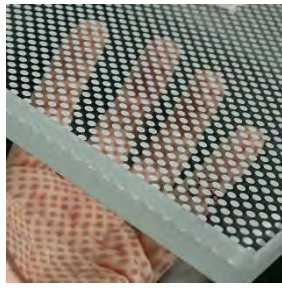
LOW-IRON GLAZING



DIFFUSING GLAZING

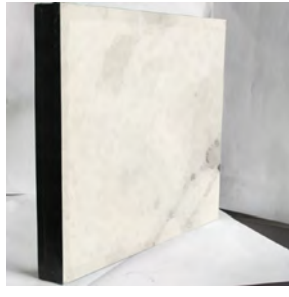


ACID-ETCHED GLAZING



STONE

WHITE GEORGIA MARBLE  
INTERLAYER



MARBLE (POLISHED &  
HONED 'WHITE GEORGIA')

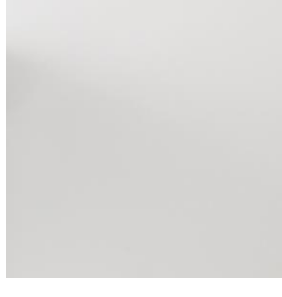


METAL

RANGE OF STAINLESS STEEL FINISHES  
(BEAD BLAST AND DIRECTIONAL)



COATED ALUMINUM



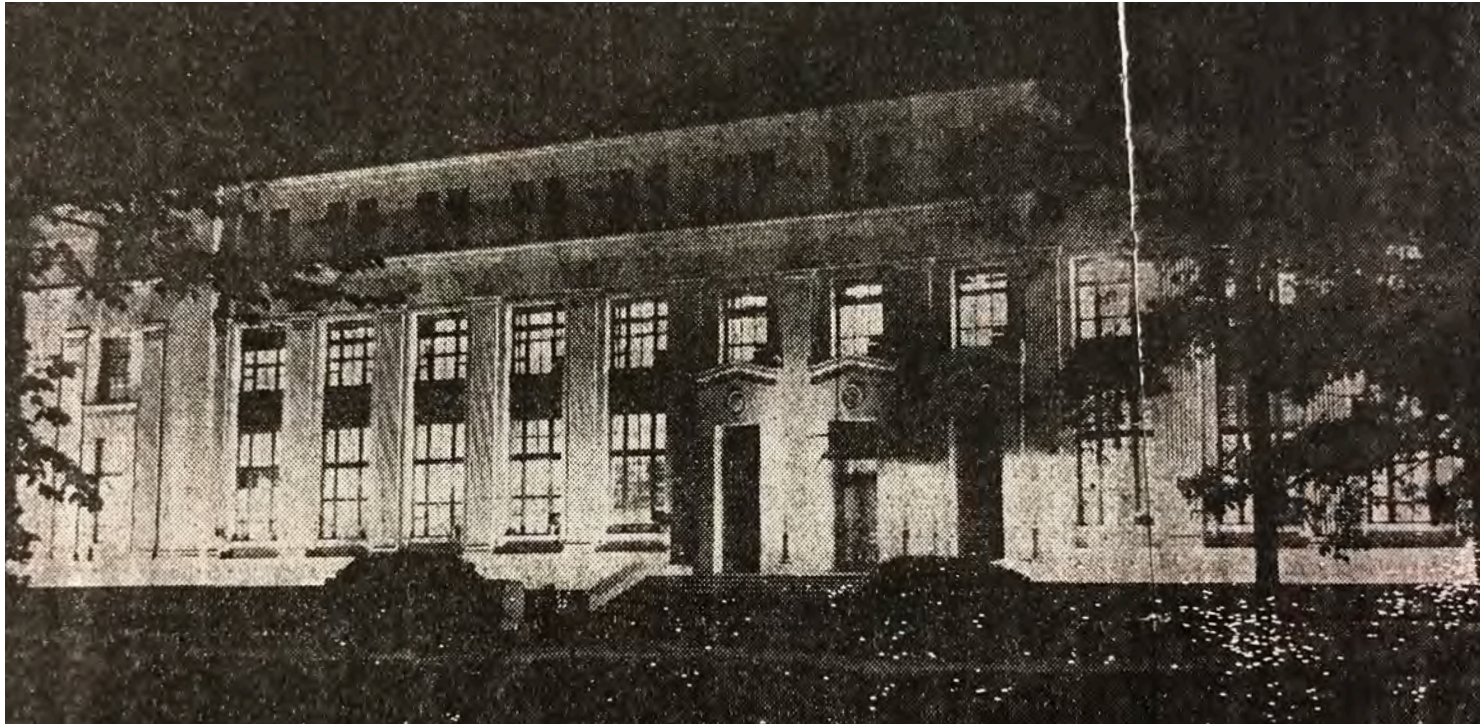




*FRB-East ca. 1933*



*FRB-East Existing Condition Photography from 19th St.*



*FRB-East ca. 1950*



*FRB-East Existing Condition Photography from South Lawn*

**HISTORIC LIGHTING DESIGN**





## PERSPECTIVE FROM CONSTITUTION AVENUE AND 19TH STREET

JULY 2, 2020

ECCLES / FRB-EAST DESIGN | CFA PRESENTATION

FORTUS | BOARD OF GOVERNORS - THE FEDERAL RESERVE SYSTEM





*Photo taken in February*



*Photo taken in June*

## EXISTING CONDITION PHOTO FROM CONSTITUTION AVENUE AND 19TH STREET





## PERSPECTIVE FROM CONSTITUTION AVENUE AND 19TH STREET

JULY 2, 2020

ECCLES / FRB-EAST DESIGN | CFA PRESENTATION

FORTUS | BOARD OF GOVERNORS - THE FEDERAL RESERVE SYSTEM