

Georgetown
Exterior
12.10.19

FOXTROT

1267 WISCONSIN AVENUE
WASHINGTON, DC 20007

Google Maps 1267 Wisconsin Ave NW



Imagery ©2020 Commonwealth of Virginia, District of Columbia (DC GIS), Maxar Technologies, Sanborn, U.S. Geological Survey, Map data ©2020 50 ft



Previous tenants graphics to be removed

White vinyl fox icon graphics 6.25x7.25" & store hours

GEORGETOWN EXTERIOR



12" tall metal letters
18' from sidewalk

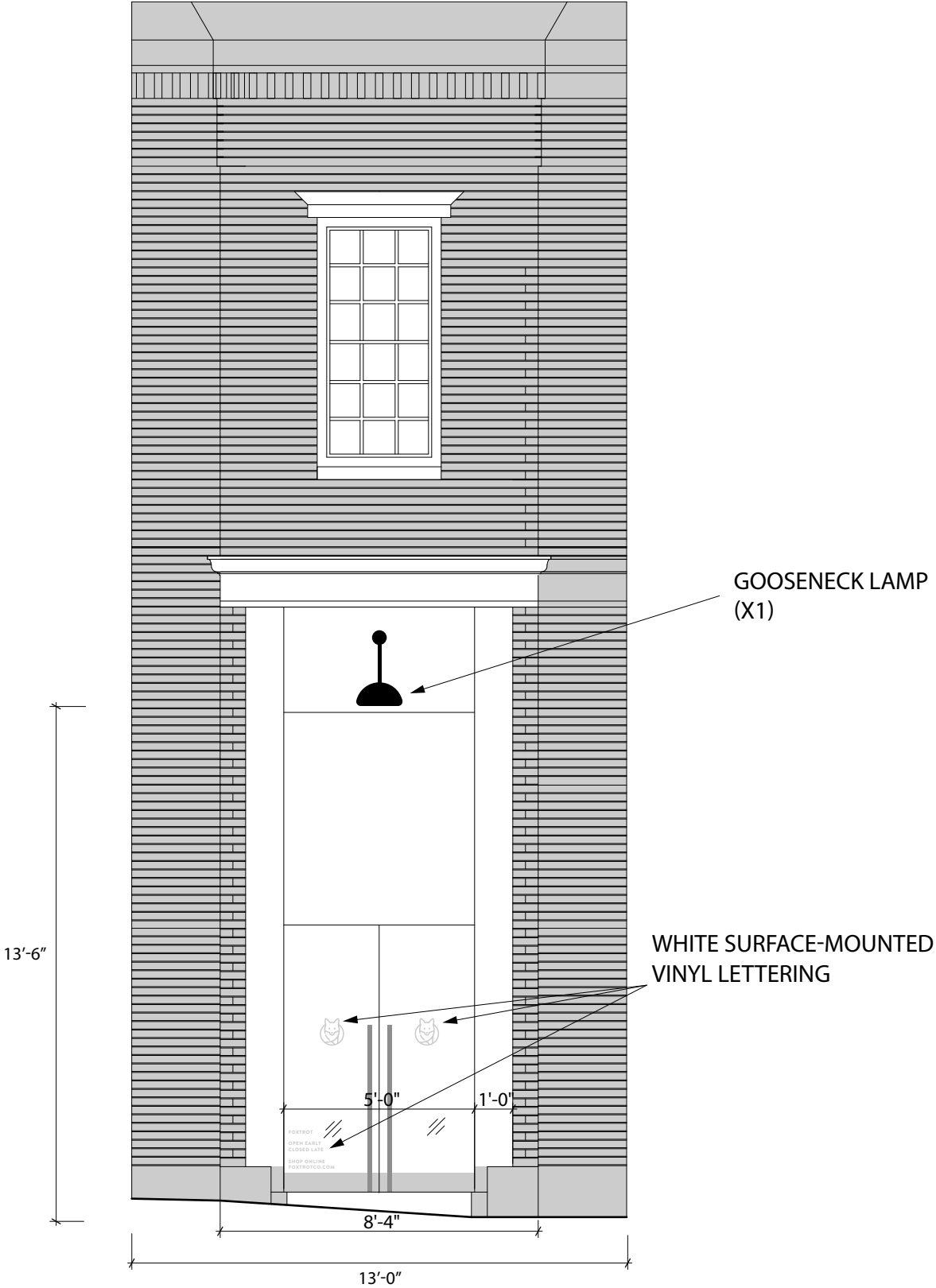
White vinyl graphics
approx 2.5" tall

GEORGETOWN EXTERIOR



Add goose neck above door
Centerline 13'-8" AFF

GEORGETOWN EXTERIOR



WISCONSIN AVENUE ELEVATION

SCALE: 1/4" = 1'-0"

12" TALL METAL
LETTERS MOUNTED
TO BACKER PLATE

PLATE IS MOUNTED TO
EXTERIOR BRICK THRU
MORTAR

SIGN IS NON ILLUMINATED

18'-0"

FOXTROT MARKET

WHITE SURFACE-MOUNTED
VINYL LETTERING

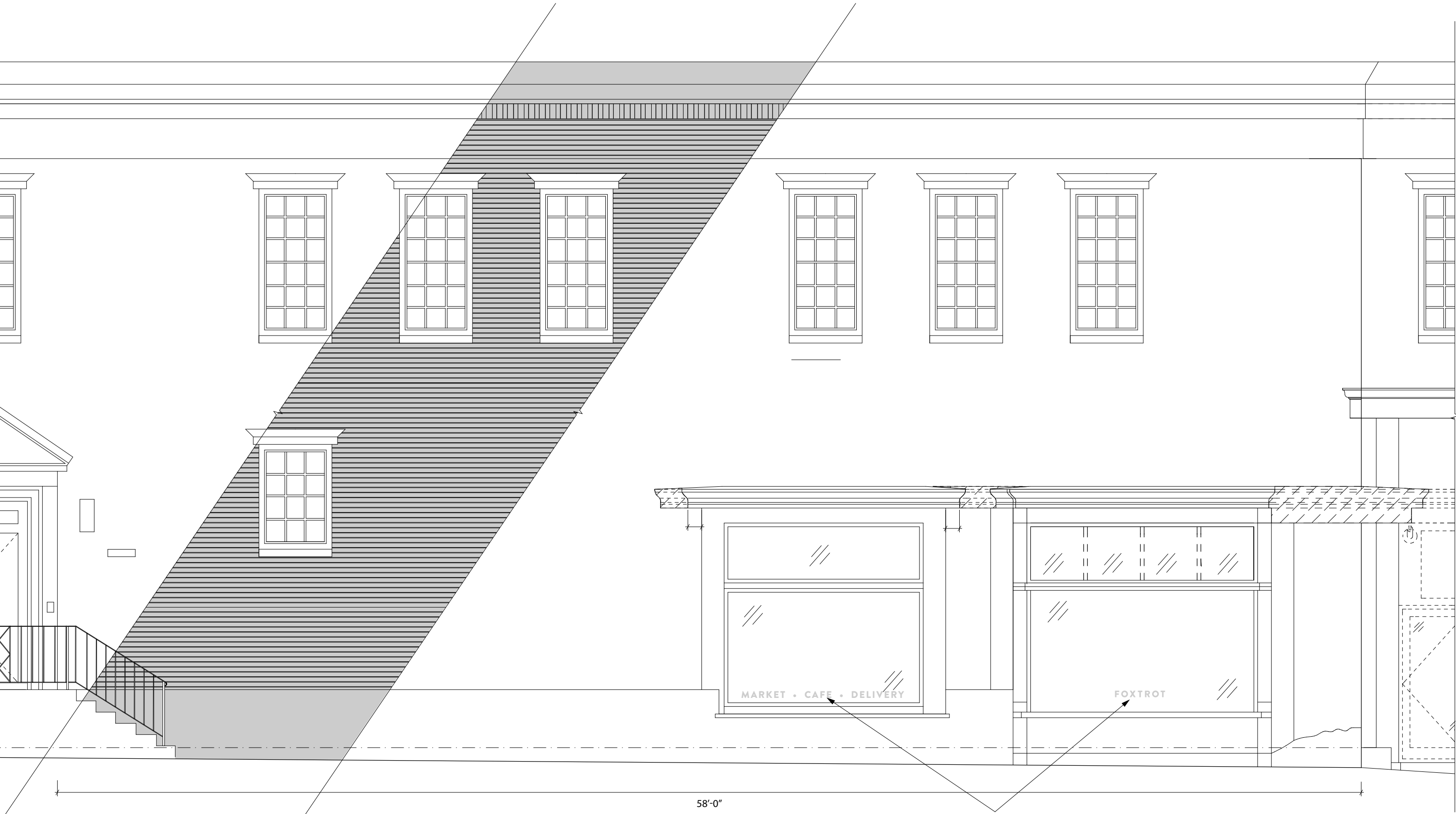
MARKET • CAFE • DELIVERY

MARKET • CAFE • DELIVERY

46'-5"

WISCONSIN AVENUE ELEVATION

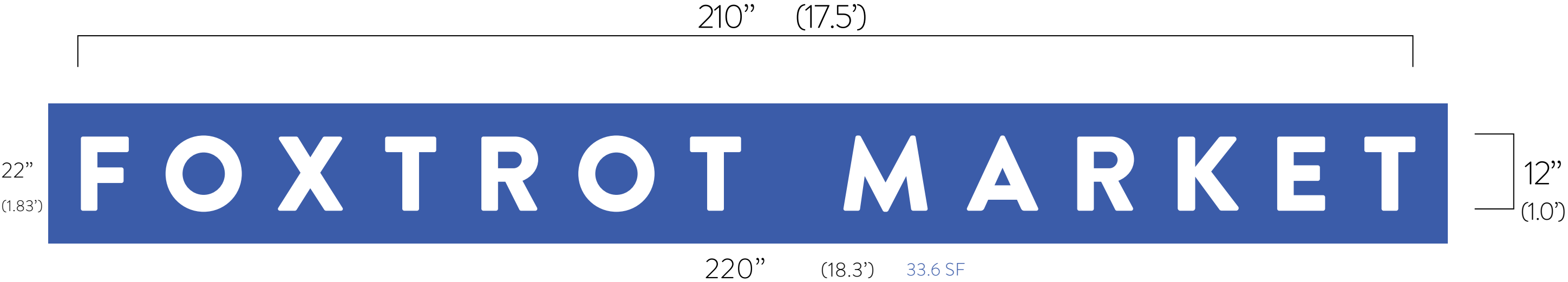
SCALE: 1/4" = 1'-0"



N STREET ELEVATION

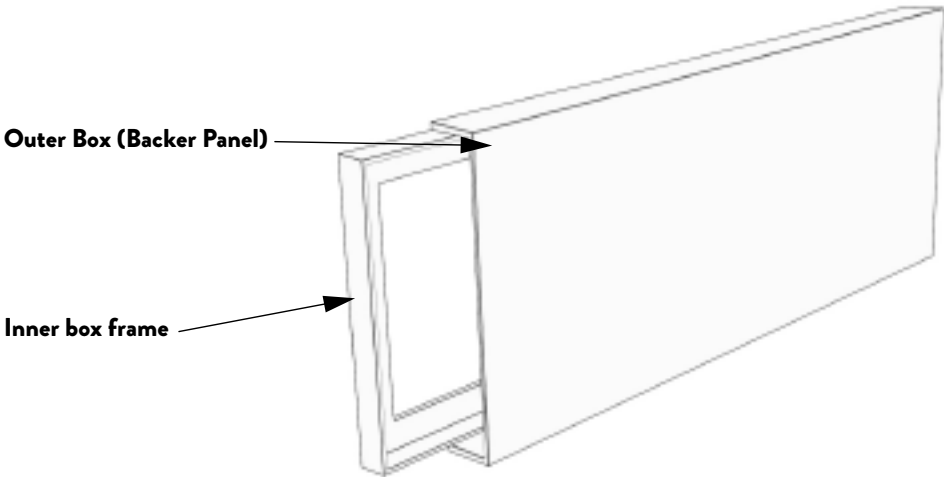
SCALE: 1/4" = 1'-0"

WHITE SURFACE-MOUNTED
VINYL LETTERING



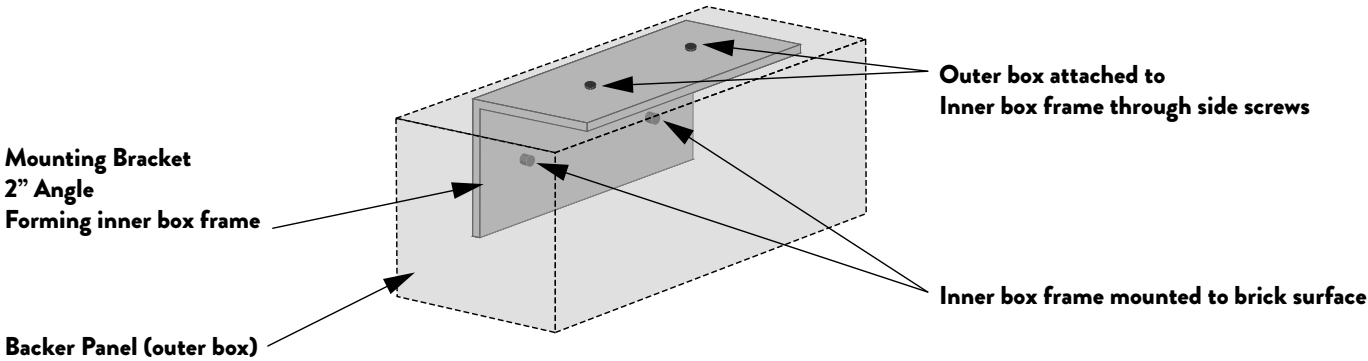
Foxtrot Wordmark

Fabricated Aluminum w/Backs, 12" letter height
NON Illuminated
3" Depth
Custom Block Style
White Painted
Return Finish-same as face
Inside Cans NOT Painted

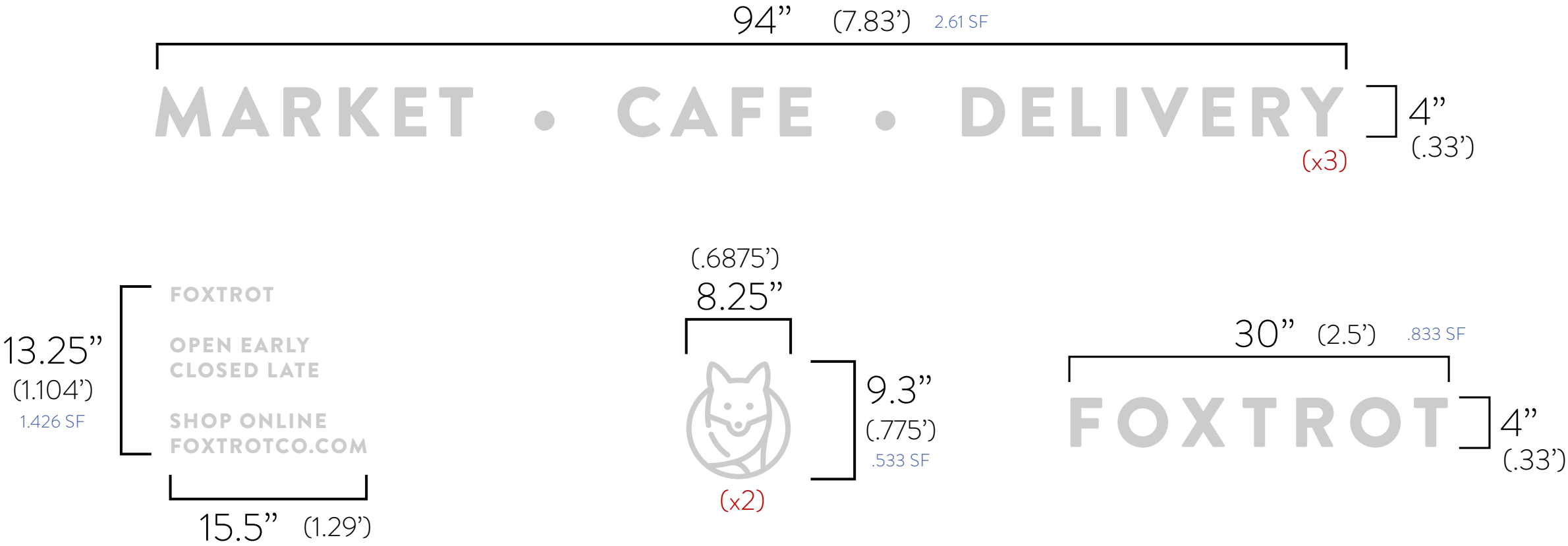


Flat Metal Backer Panel, 2" Depth

1/8" Thick Aluminum
22"x220" Painted to match building
Wall-mount holes to be drilled on-site
Brick Wall Installation via screw fasteners
and anchors into mortar



White die-cut adhesive vinyl
 Surface mount



REJUVENATION



Carson Gooseneck Wall Sconce

Item #A2949

<http://www.rejuvenation.com/s/16sl8>

Specification	Detail
Item #	A2949
Finish	Carbon
Socket Type	E26
Projection	18"
Shade	B1700-20 in-GZ
Shade SKU	B1700-20 in-GZ
Wire Bulb Guard	None
Maximum fixture wattage per socket	300 W
UL Listed	UL Listed Wet
Canopy width	5"
Overall fixture width	20-1/8"
Length	22-7/8"
Overall fixture depth	28-1/8"
Shade height	9"











