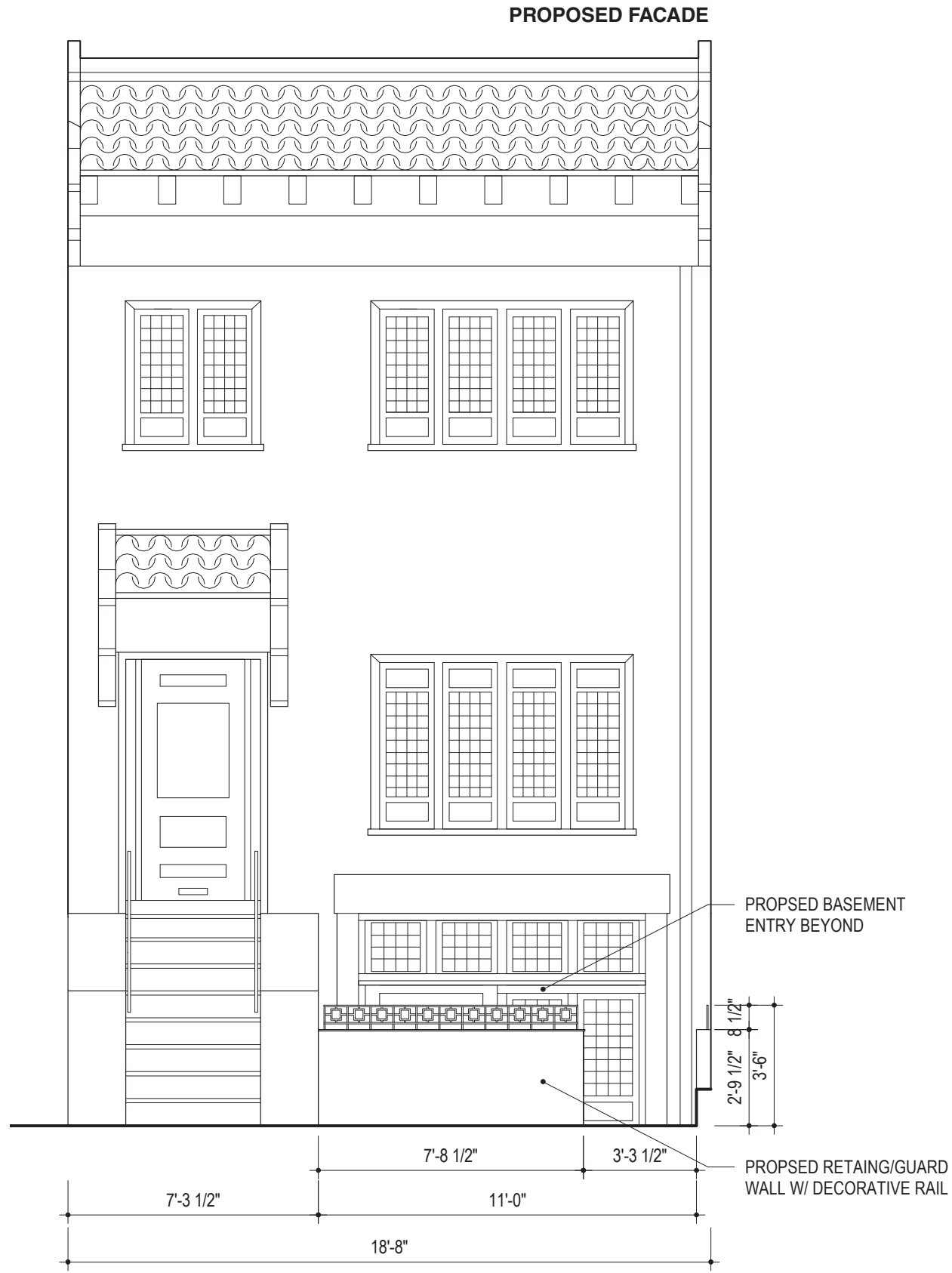




EXISTING FACADE



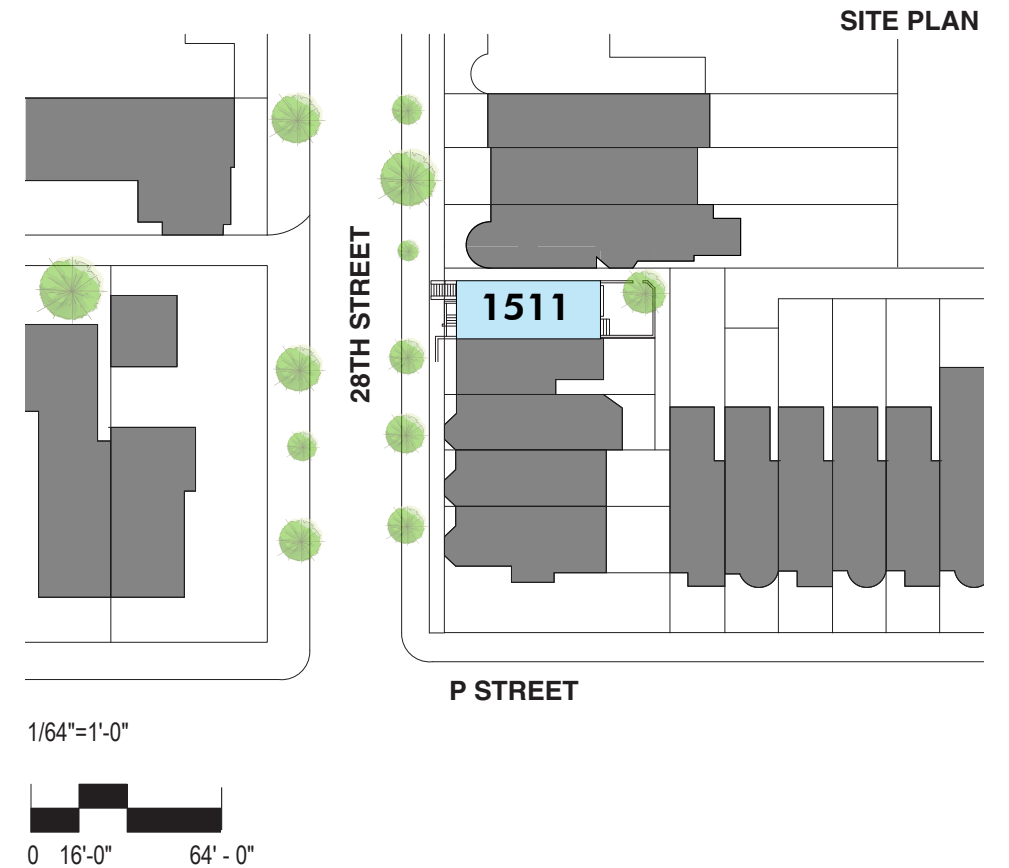
LOOKING NORTH ON 28TH STREET



1511 28TH ST NW

FACADE & BASEMENT RENOVATION

THIS PROJECT IS A RENOVATION OF THE EXISTING BASEMENT OF 1511 28TH STREET NW. A NEW STAIR WILL LEAD TO THE BASEMENT WHERE A DOOR AND WINDOW WILL REPLACE THE EXISTING BRICK FACADE. THE EXISTING ORNAMENTAL FRAME WILL REMAIN AS THE BOUNDARY OF THESE OPENINGS. A NEW SINGULAR SCREEN WILL REPLACE THE EXISTING SCREEN. ALL ELEMENTS ARE DESIGNED TO FIT WITHIN THE UNIQUE FACADE AS IF THEY HAVE ALWAYS EXISTED. THE GUARDRAIL AND HANDRAIL WILL ECHO THE EXISTING WROUGHT IRON HANDRAIL LEADING TO THE 1ST LEVEL ENTRY. THE STAIRS WILL BE TOPPED WITH THE SAME BLUESTONE TREADS AND THE RETAINING WALL BRICK WILL MATCH THE EXISTING STAIR BRICK. THE WINDOW, DOOR, AND SCREEN WILL BE PAINTED TO MATCH THE EXISTING ELEMENTS ON THE FACADE.

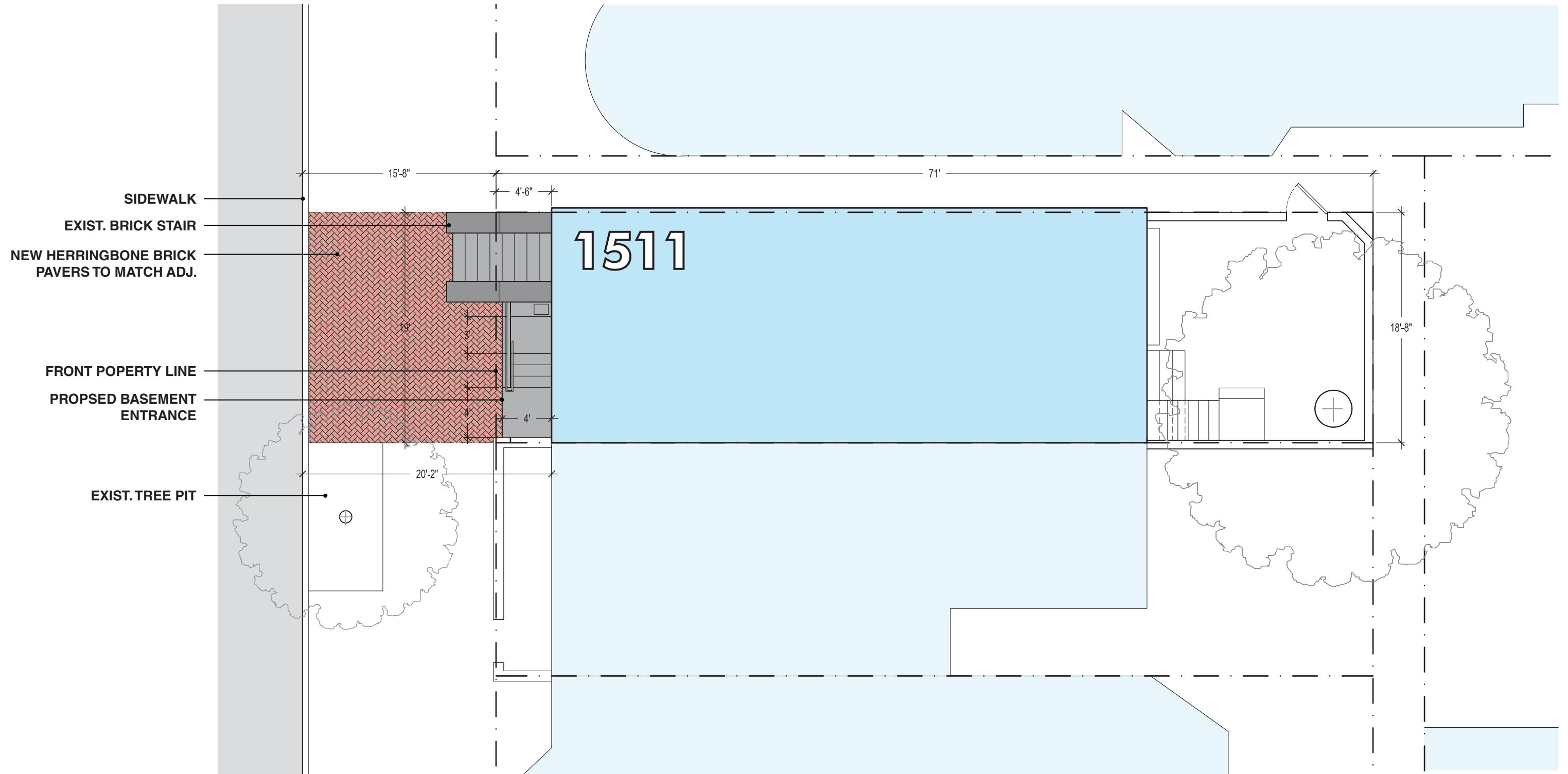


1511 28TH ST NW

FACADE & BASEMENT RENOVATION
OLD GEORGETOWN BOARD US COMMISSION OF FINE ARTS

EASTWING

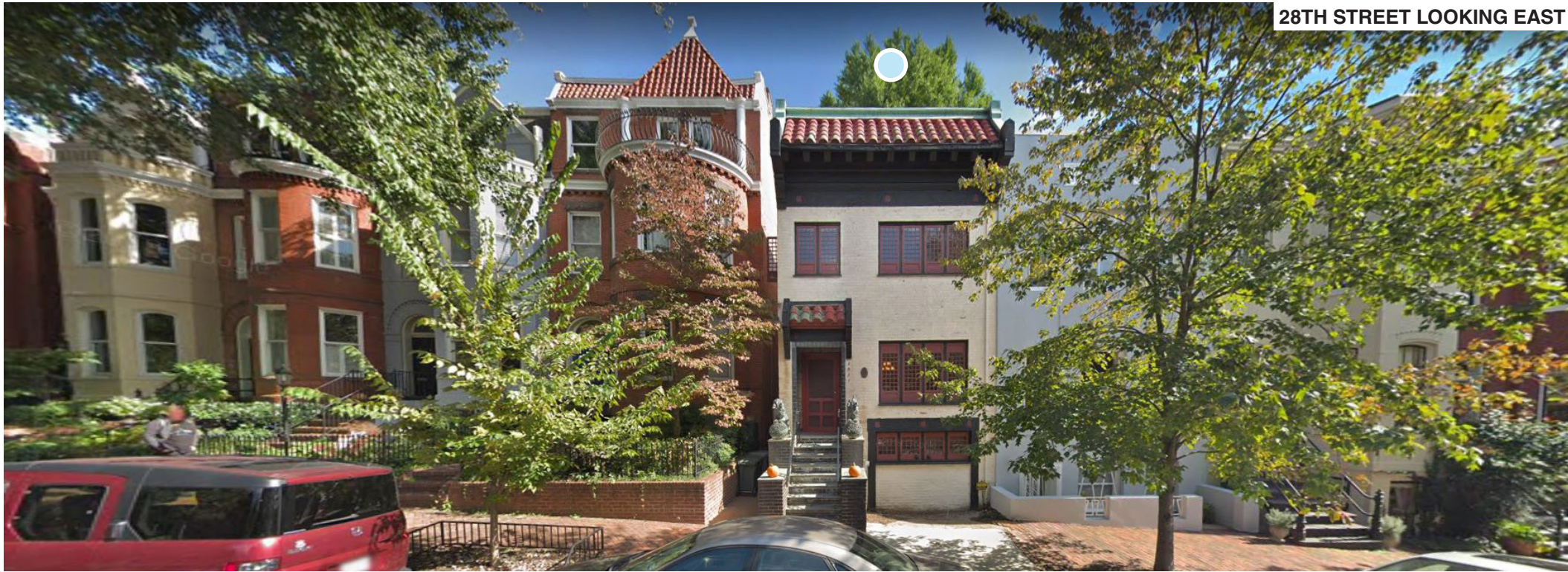
ARCHITECTS



1511 28TH ST NW

FACADE & BASEMENT RENOVATION
OLD GEORGETOWN BOARD US COMMISSION OF FINE ARTS

EASTWING
ARCHITECTS



EXISTING CONDITIONS
28TH STREET



1511 28TH ST NW
 FACADE & BASEMENT RENOVATION
 OLD GEORGETOWN BOARD US COMMISSION OF FINE ARTS





EXISTING FACADE



PROPERTY LINE CONDITION



EXISTING STAIR & HANDRAIL TO LEVEL ONE

EXISTING CONDITIONS FRONT ENTRY



28TH STREET LOOKING NORTH



EXISTING FRAME & SCREEN



EXISTING CONDITION AT PROPOSED ENTRY/STAIR



1511 28TH ST NW

FACADE & BASEMENT RENOVATION
OLD GEORGETOWN BOARD US COMMISSION OF FINE ARTS

EASTWING
ARCHITECTS



REAR ELEVATION



DETAIL



EGRESS WINDOW DETAIL

EXISTING CONDITIONS
REAR YARD



REAR FIRST FLOOR EGRESS



REAR YARD / PATIO



REAR BASEMENT DOOR



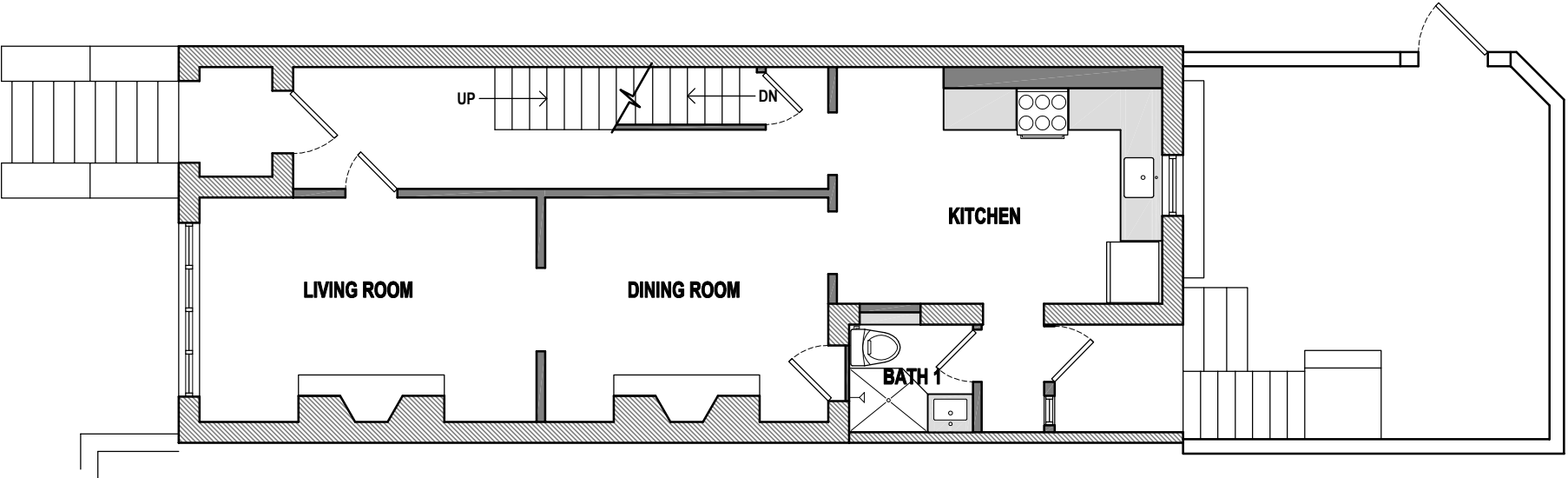
1511 28TH ST NW

FACADE & BASEMENT RENOVATION
OLD GEORGETOWN BOARD US COMMISSION OF FINE ARTS

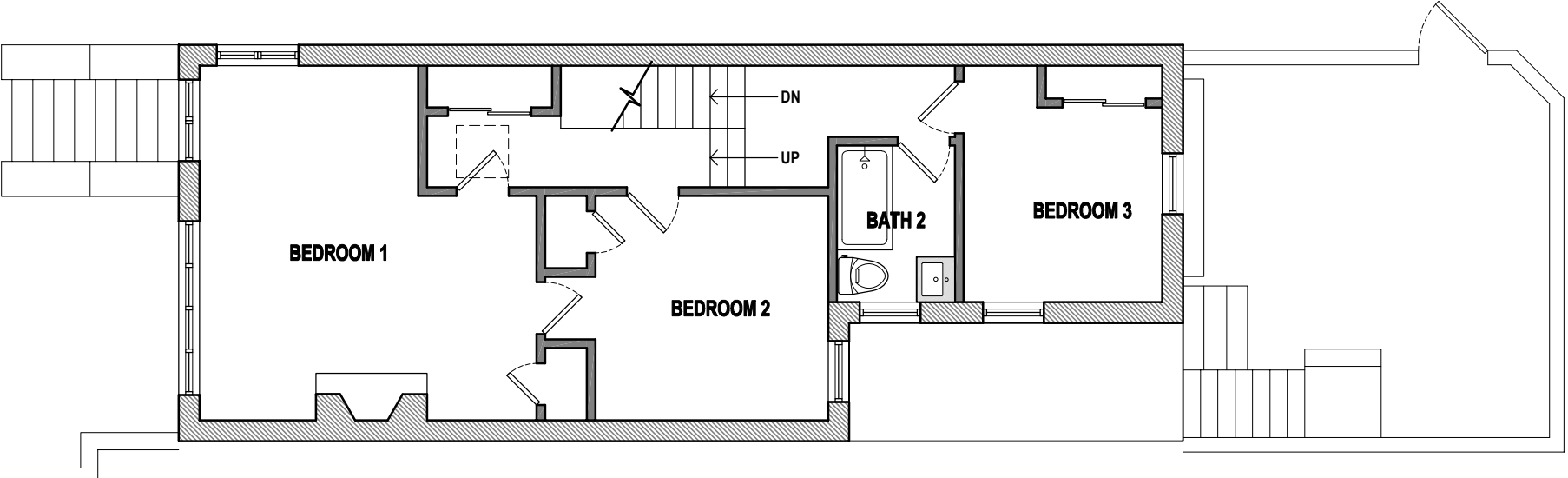
EASTWING
ARCHITECTS

ASTWING
ARCHITECTS

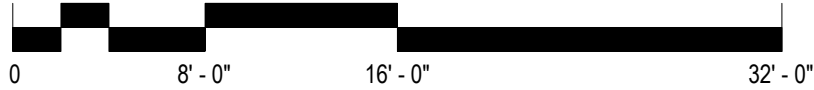
FLOOR PLANS
EXISTING



FIRST FLOOR PLAN



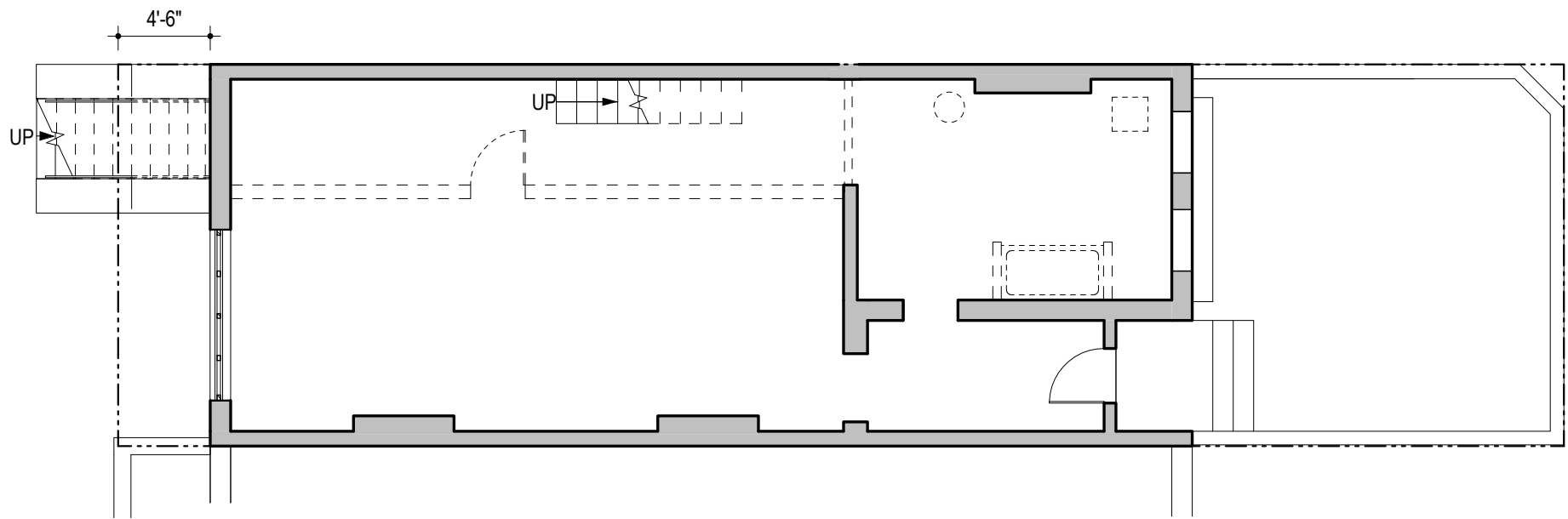
SECOND FLOOR PLAN



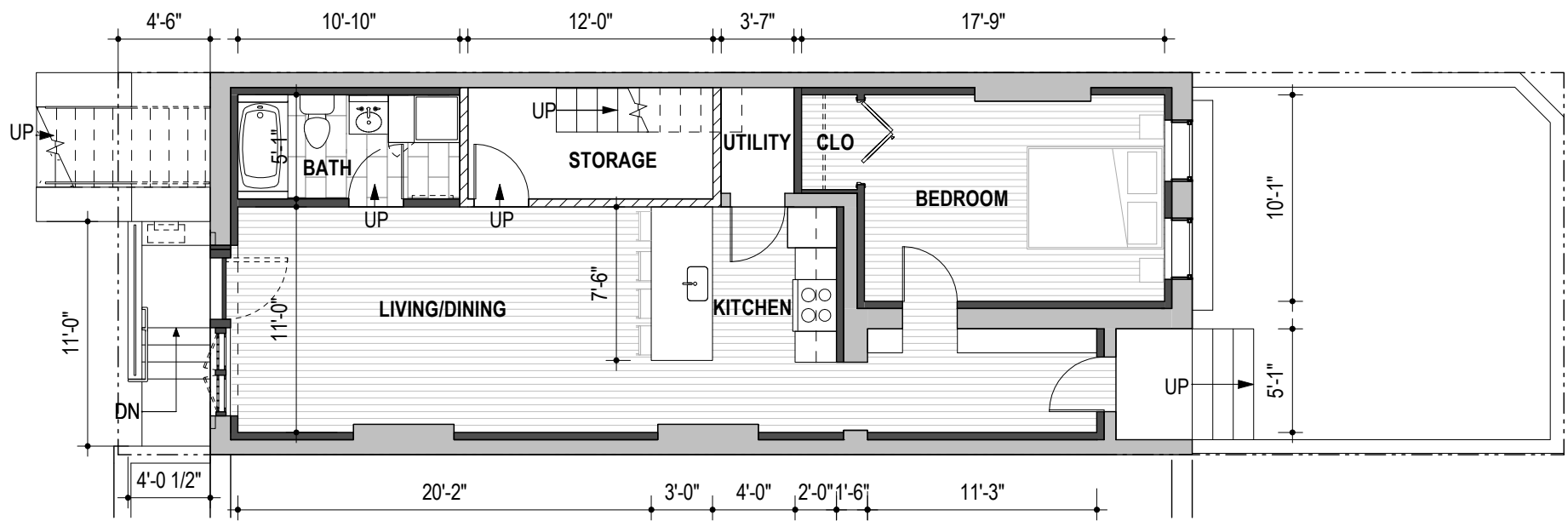
1511 28TH ST NW
FACADE & BASEMENT RENOVATION
OLD GEORGETOWN BOARD US COMMISSION OF FINE ARTS

EASTWING
ARCHITECTS

FLOOR PLANS
BASEMENT



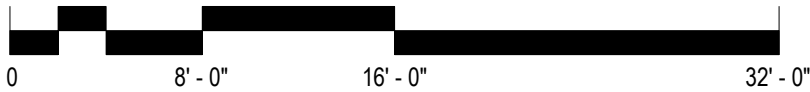
2 EXISTING/DEMO PLAN
1/8" = 1'-0"



1 PROPOSED BASEMENT PLAN-
1/8" = 1'-0"

PLAN KEY

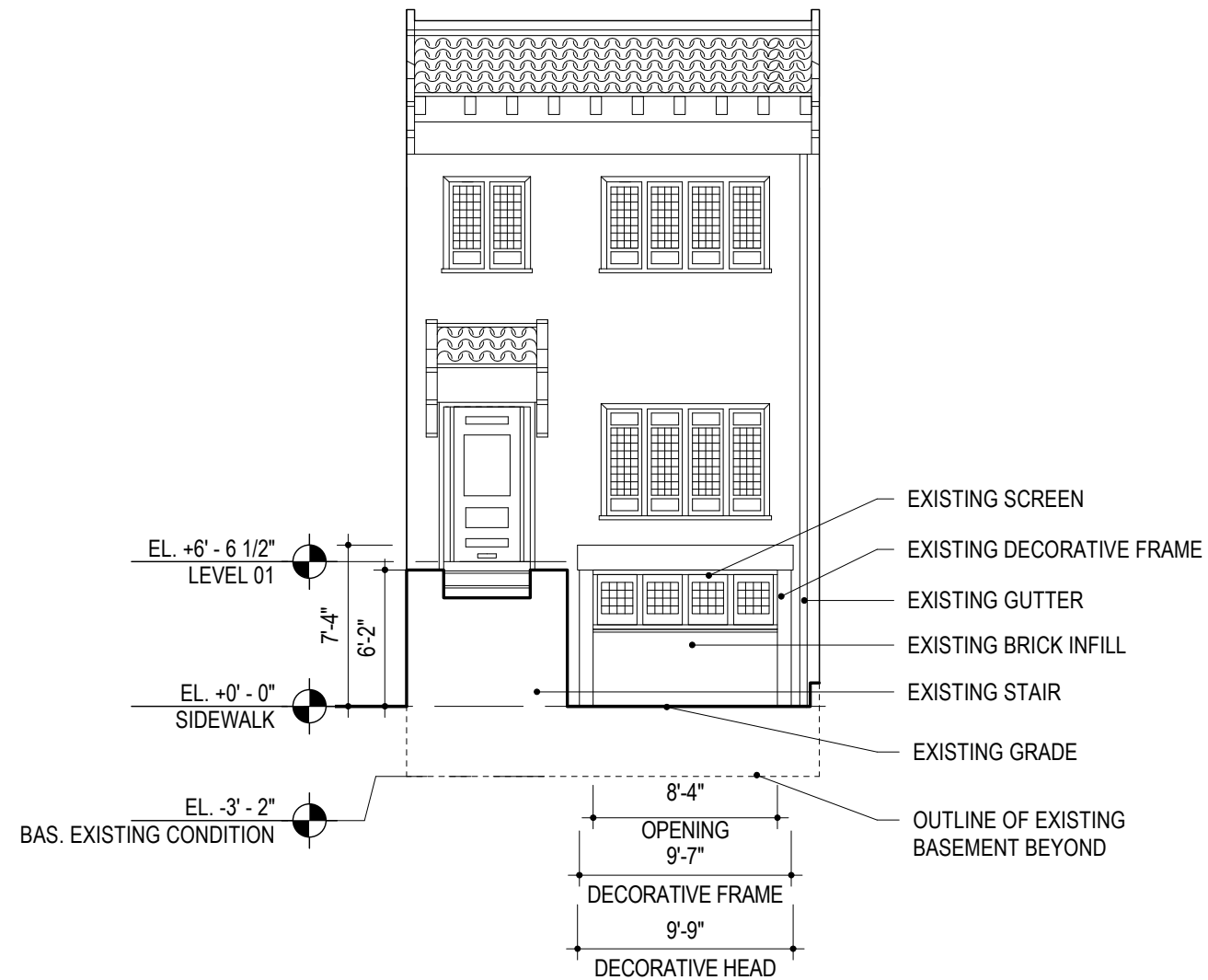
- EXISTING WALL
- NEW WALL
- FIRE RATED WALL
- WALL TO BE DEMOLISHED
- NEW WOOD FLOOR
- NEW TILE FLOOR



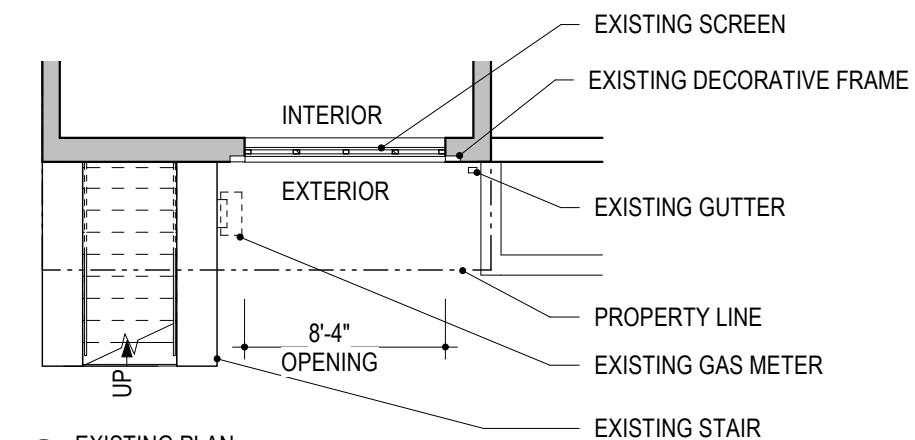
1511 28TH ST NW
FACADE & BASEMENT RENOVATION
OLD GEORGETOWN BOARD US COMMISSION OF FINE ARTS

EASTWING
ARCHITECTS

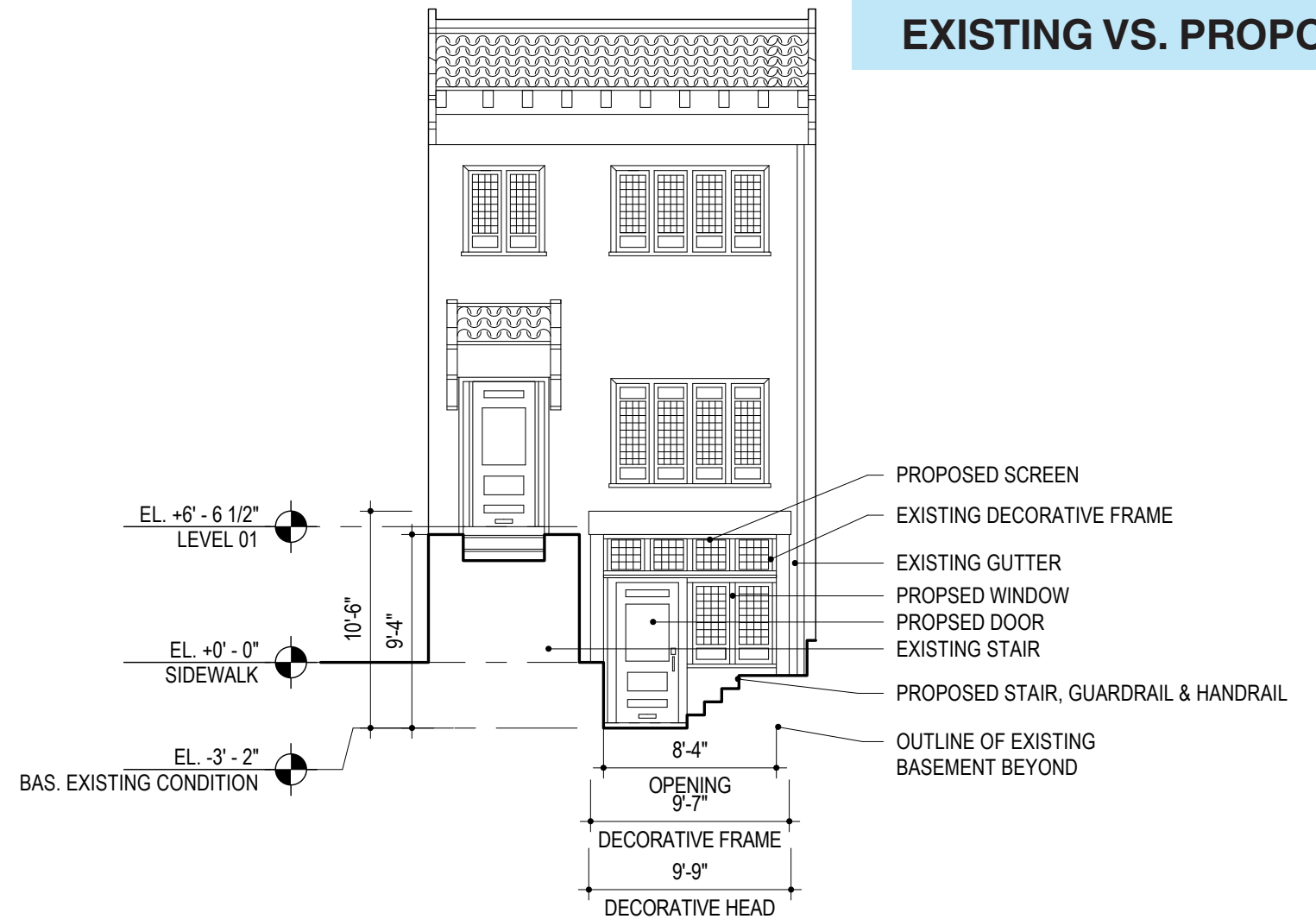
EXISTING VS. PROPOSED



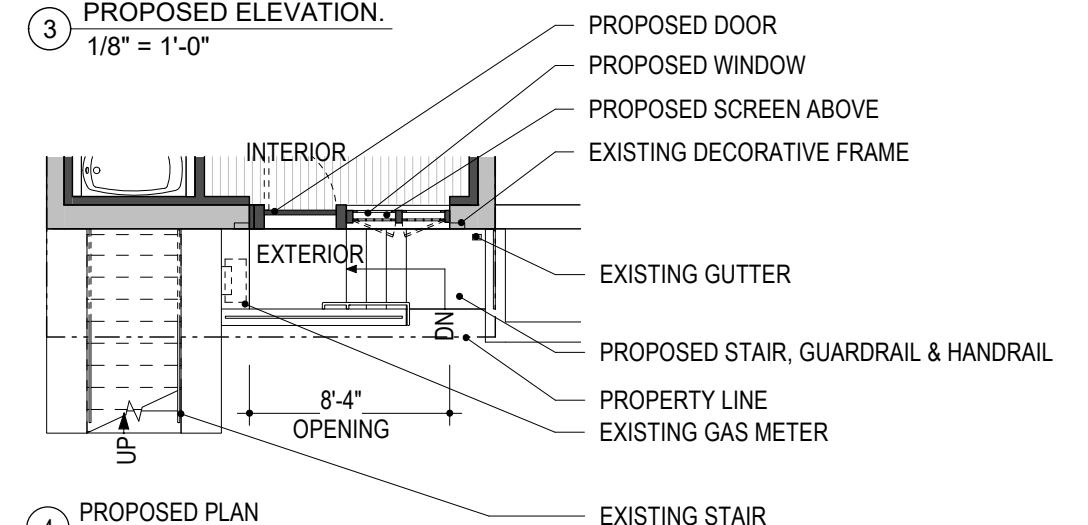
1 EXISTING ELEVATION
1/8" = 1'-0"



2 EXISTING PLAN
1/8"=1'-0"



3 PROPOSED ELEVATION.
1/8" = 1'-0"



4 PROPOSED PLAN
1/8"=1'-0"

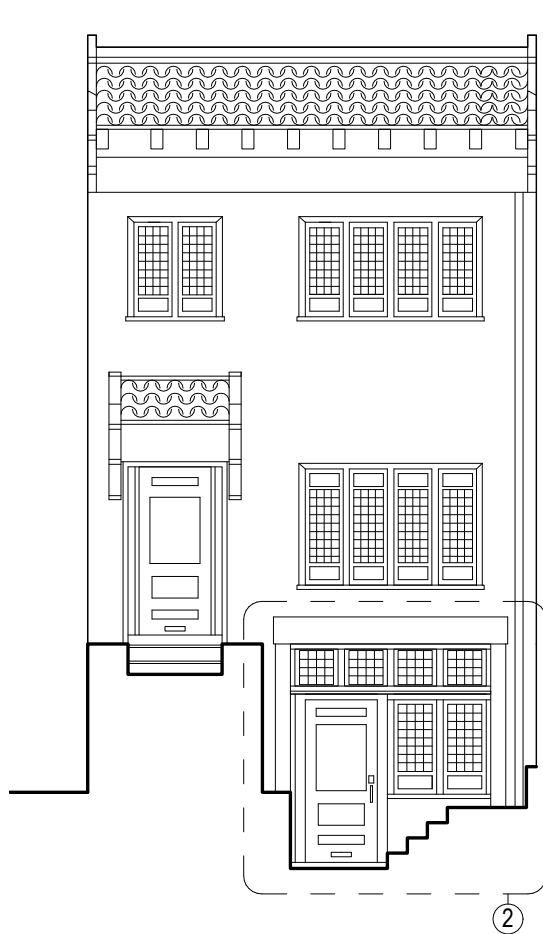


1511 28TH ST NW

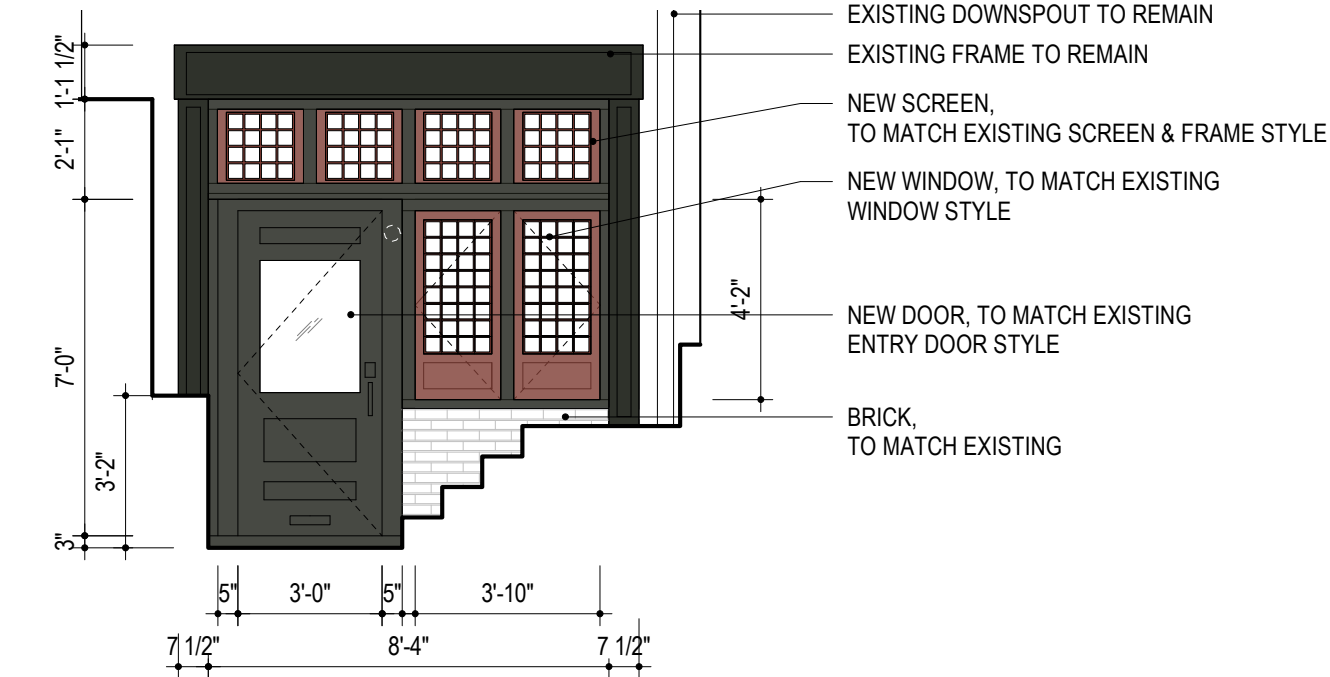
FACADE & BASEMENT RENOVATION
OLD GEORGETOWN BOARD US COMMISSION OF FINE ARTS

EASTWING ARCHITECTS

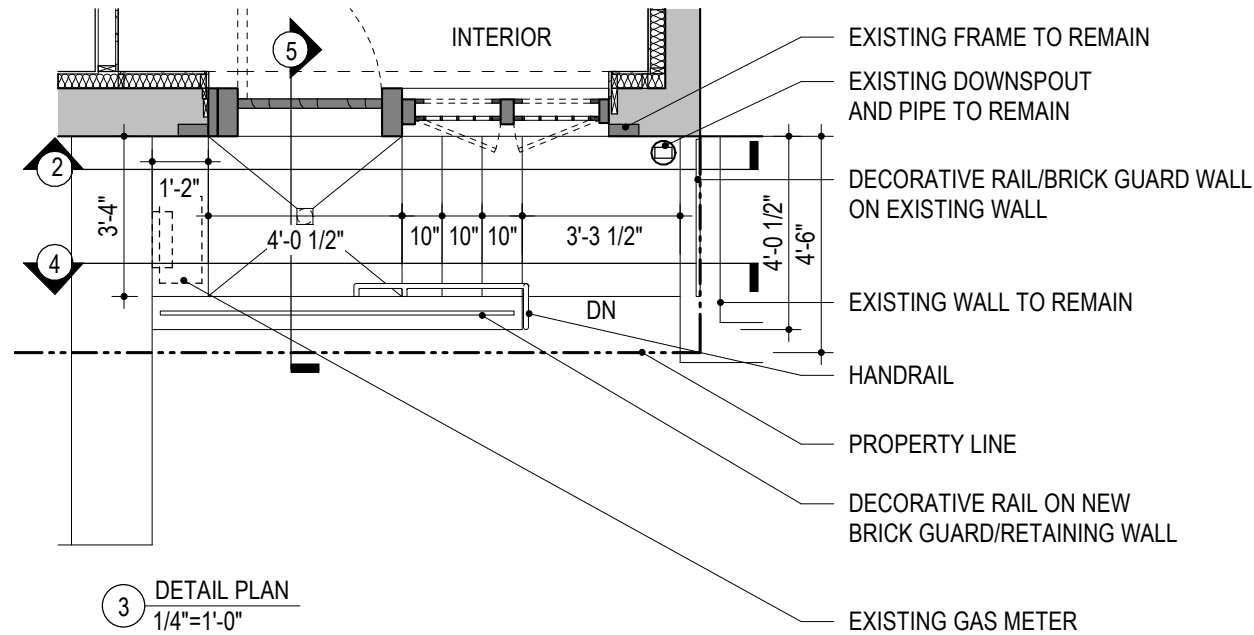
DETAILS



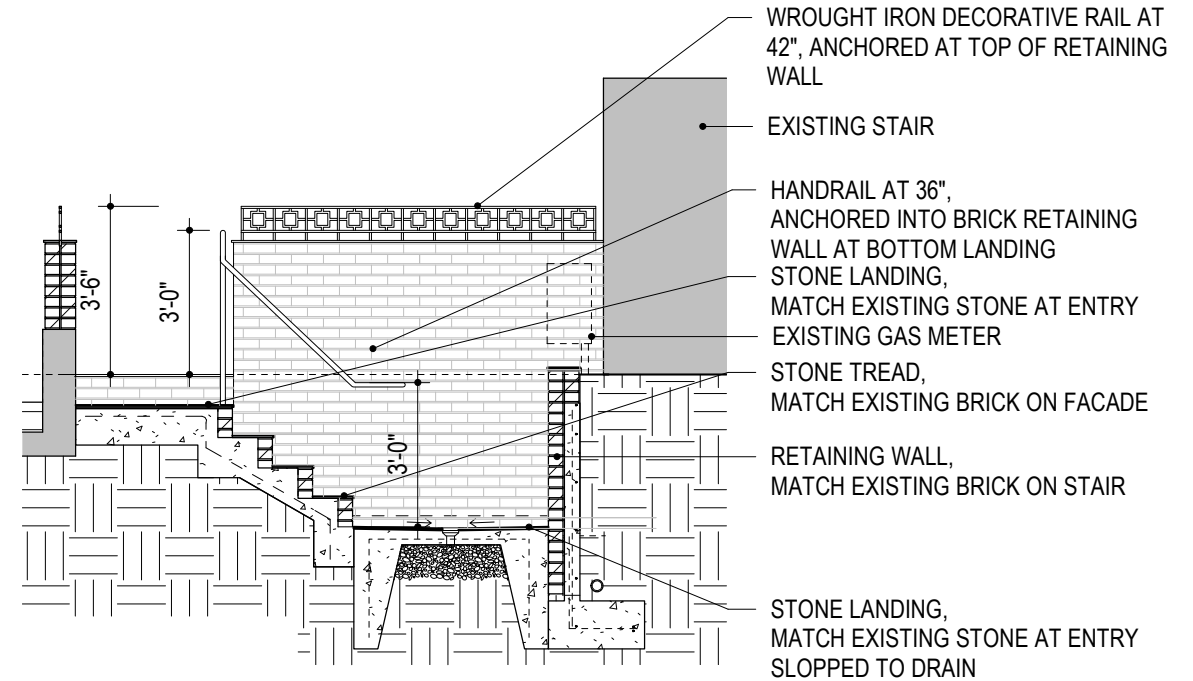
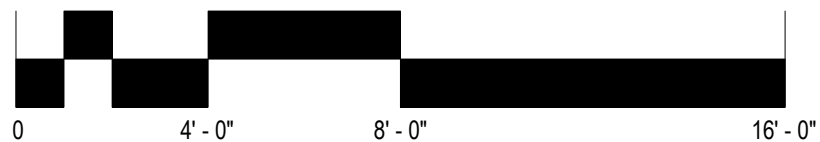
1 PROPOSED ELEVATION
1/8" = 1'-0"



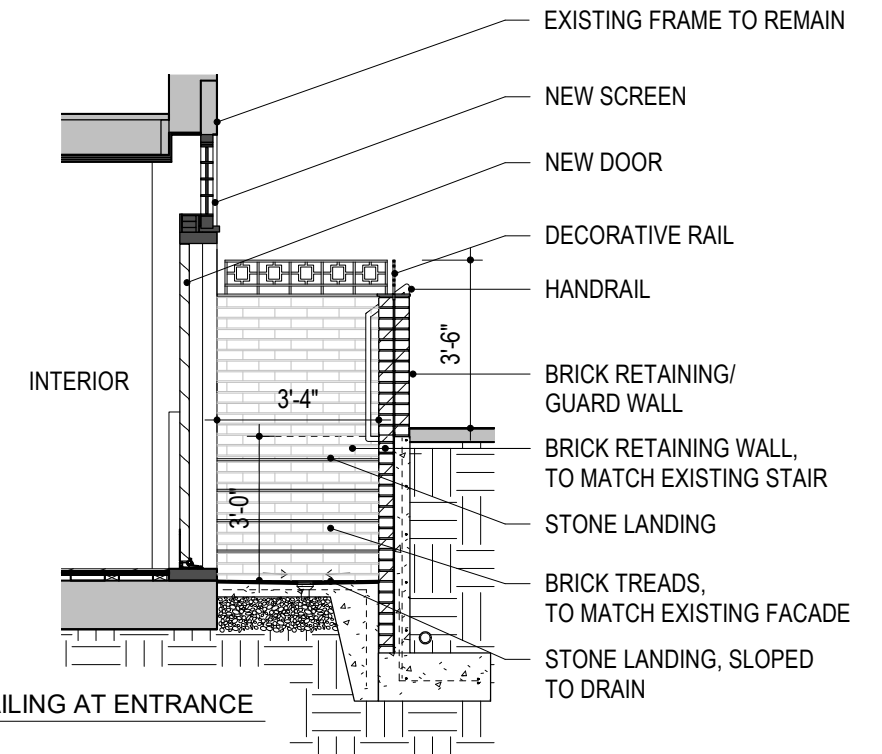
2 DETAIL ELEVATION
1/4" = 1'-0"



3 DETAIL PLAN
1/4" = 1'-0"



4 STAIR & RAILING
1/4" = 1'-0"



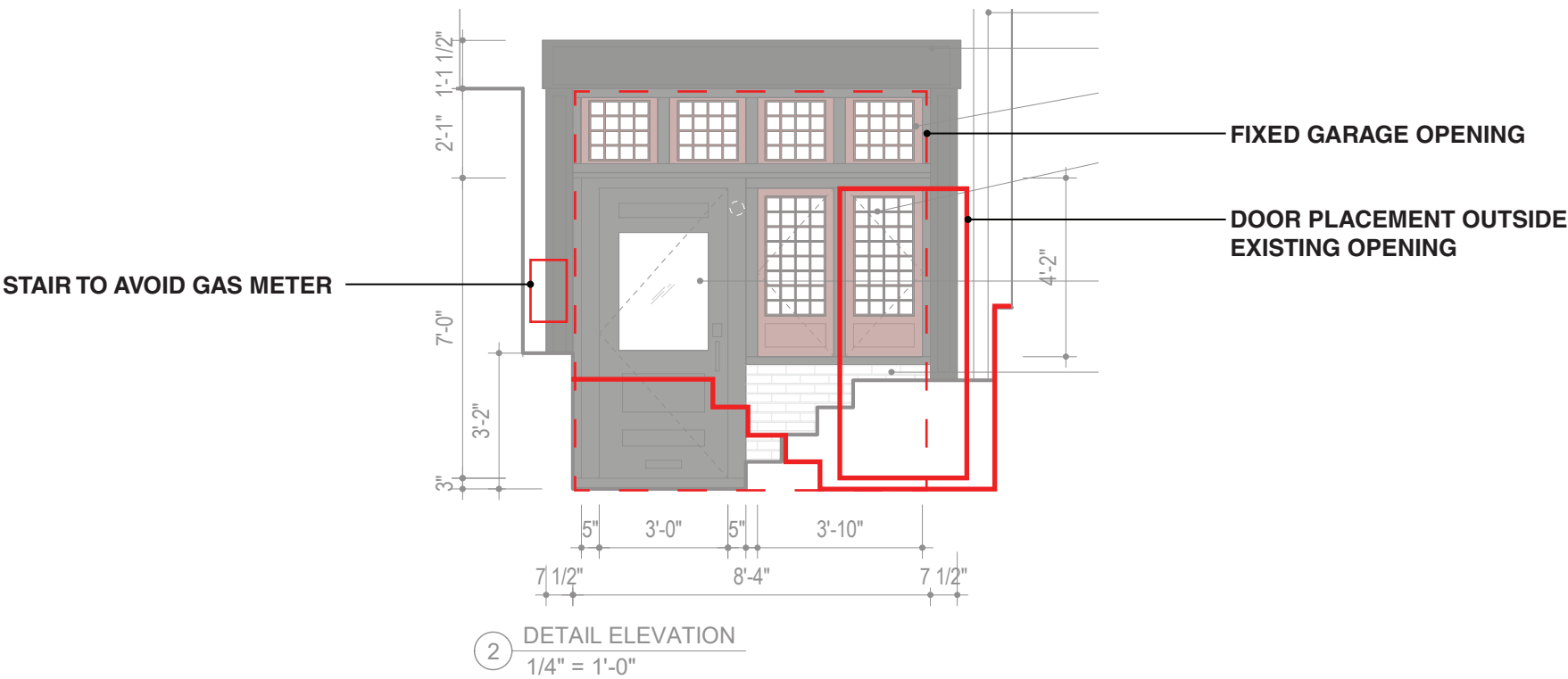
5 STAIR & RAILING AT ENTRANCE
1/4" = 1'-0"

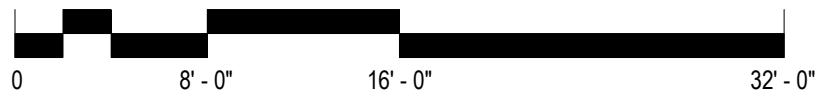
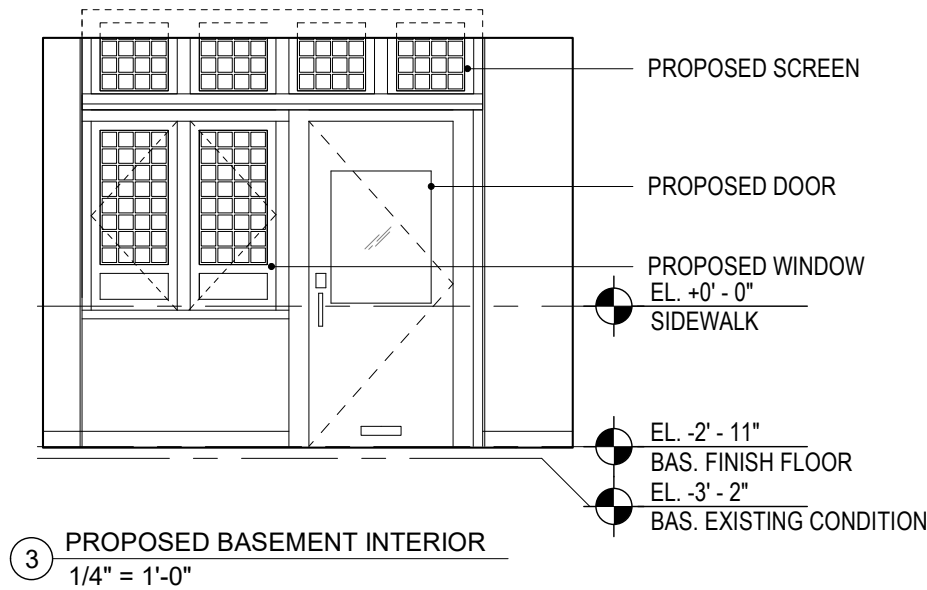
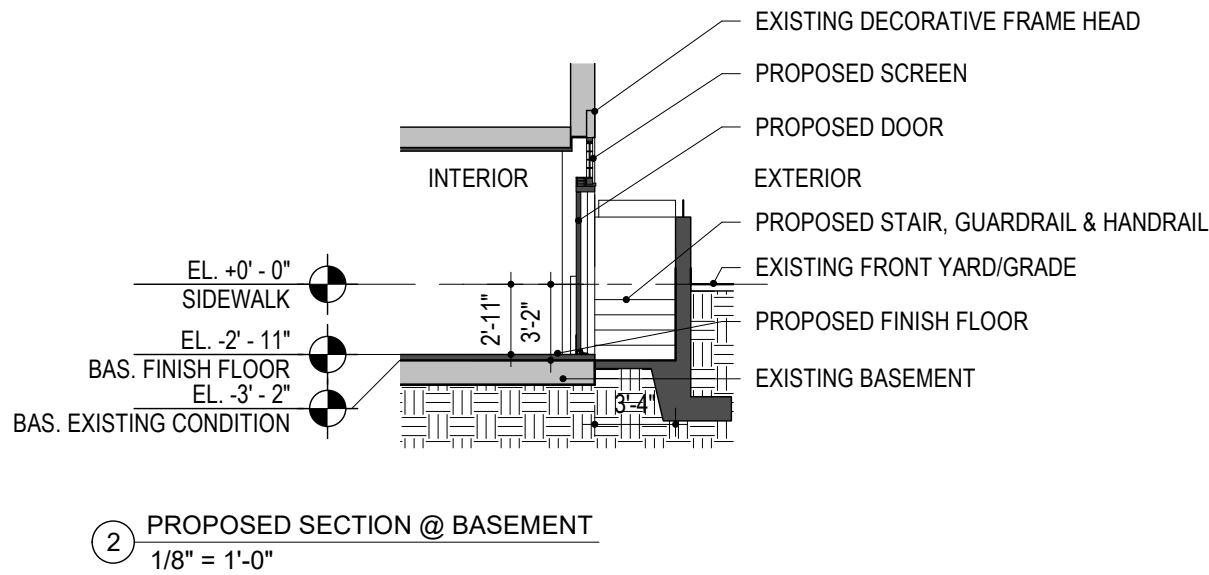
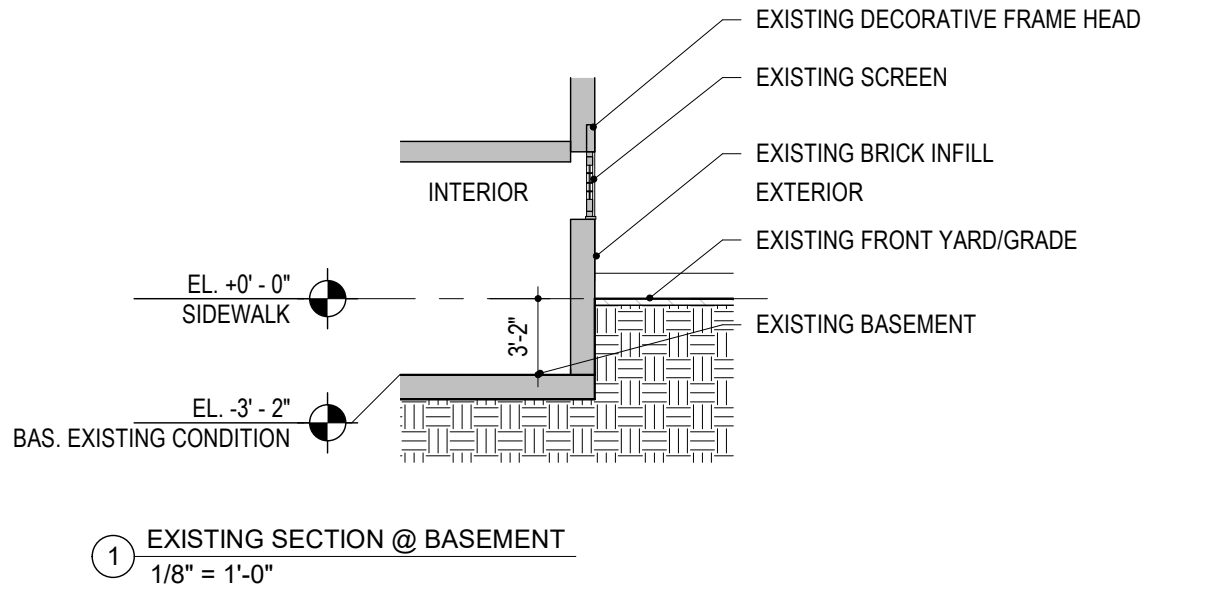


1511 28TH ST NW

FACADE & BASEMENT RENOVATION
OLD GEORGETOWN BOARD US COMMISSION OF FINE ARTS

EASTWING
ARCHITECTS





1511 28TH ST NW

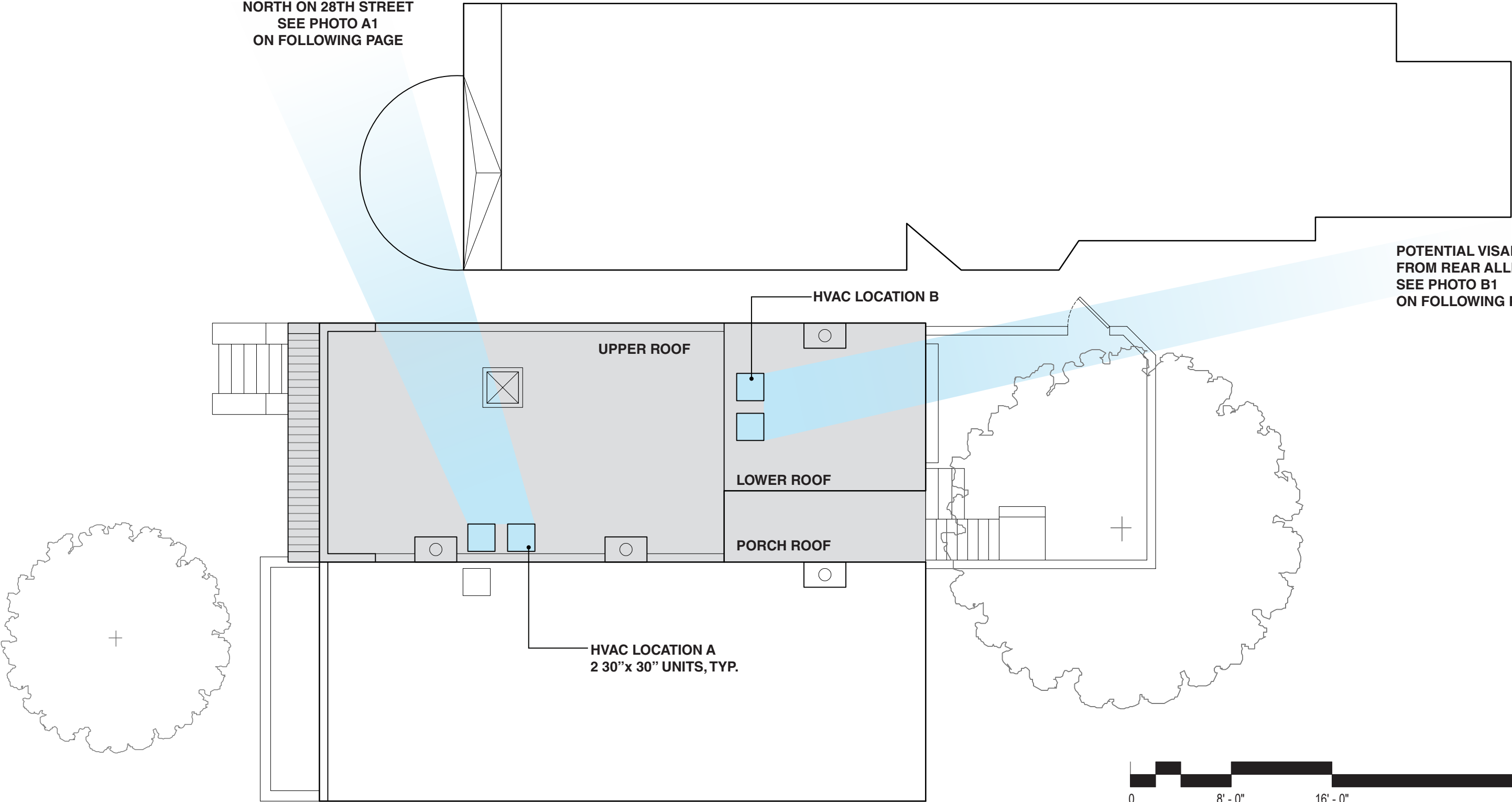
FACADE & BASEMENT RENOVATION
OLD GEORGETOWN BOARD US COMMISSION OF FINE ARTS

EASTWING
ARCHITECTS

HVAC / ROOF PLAN

POTENTIAL VISIBILITY
NORTH ON 28TH STREET
SEE PHOTO A1
ON FOLLOWING PAGE

POTENTIAL VISIBILITY
FROM REAR ALLEY
SEE PHOTO B1
ON FOLLOWING PAGE



1511 28TH ST NW

FACADE & BASEMENT RENOVATION
OLD GEORGETOWN BOARD US COMMISSION OF FINE ARTS

EASTWING
ARCHITECTS



A1 - UPPER TIER HVAC w/ SIGHTLINE TO 28TH STREET



B1 - LOWER TIER HVAC w/ SIGHTLINE TO REAR ALLEY



1511 28TH ST NW

FACADE & BASEMENT RENOVATION
OLD GEORGETOWN BOARD US COMMISSION OF FINE ARTS

EASTWING
ARCHITECTS