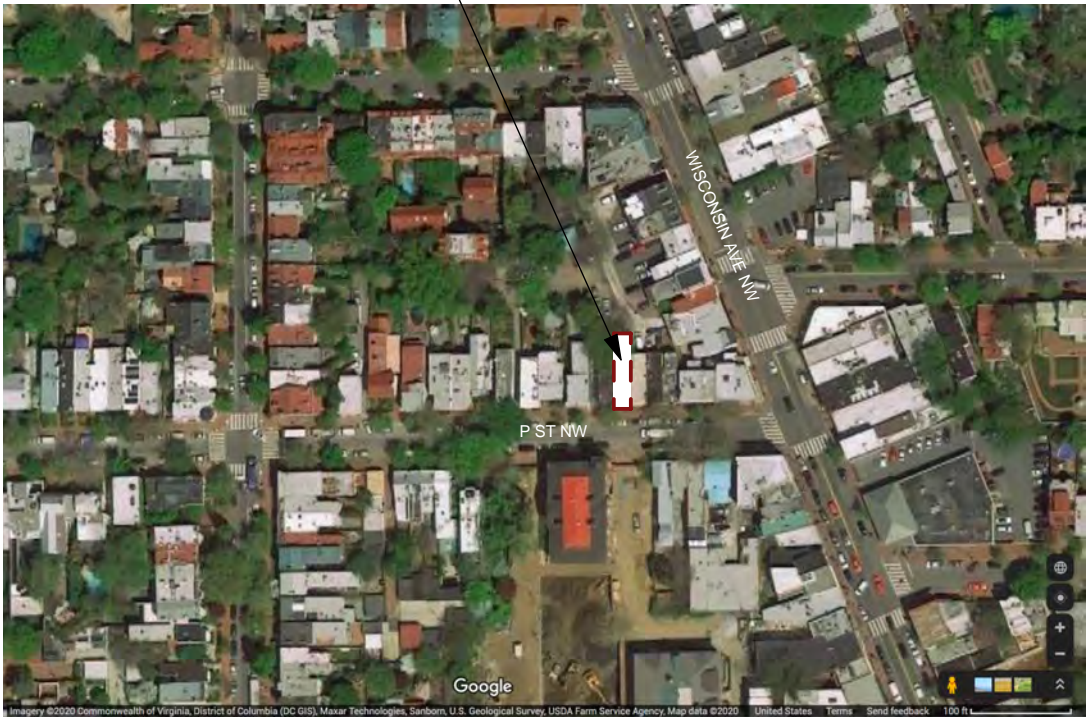


RENOVATION OF THE DUNNER LAW OFFICE

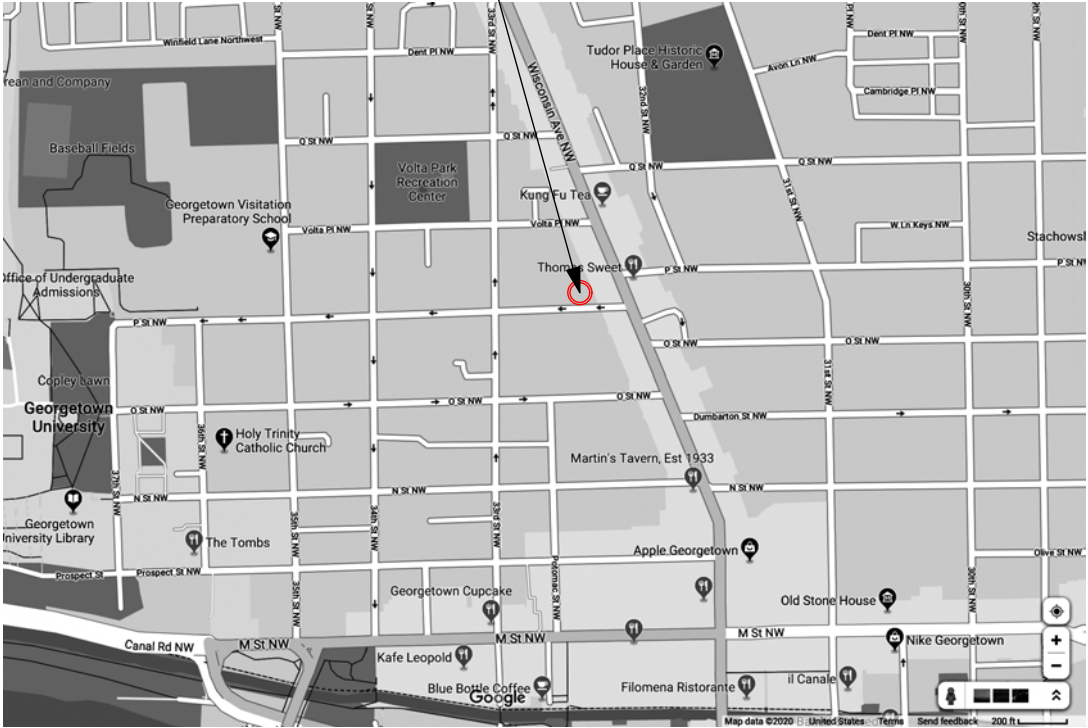
3243 P ST NW WASHINGTON, DC 20007

PROJECT SITE - 3243 P ST NW

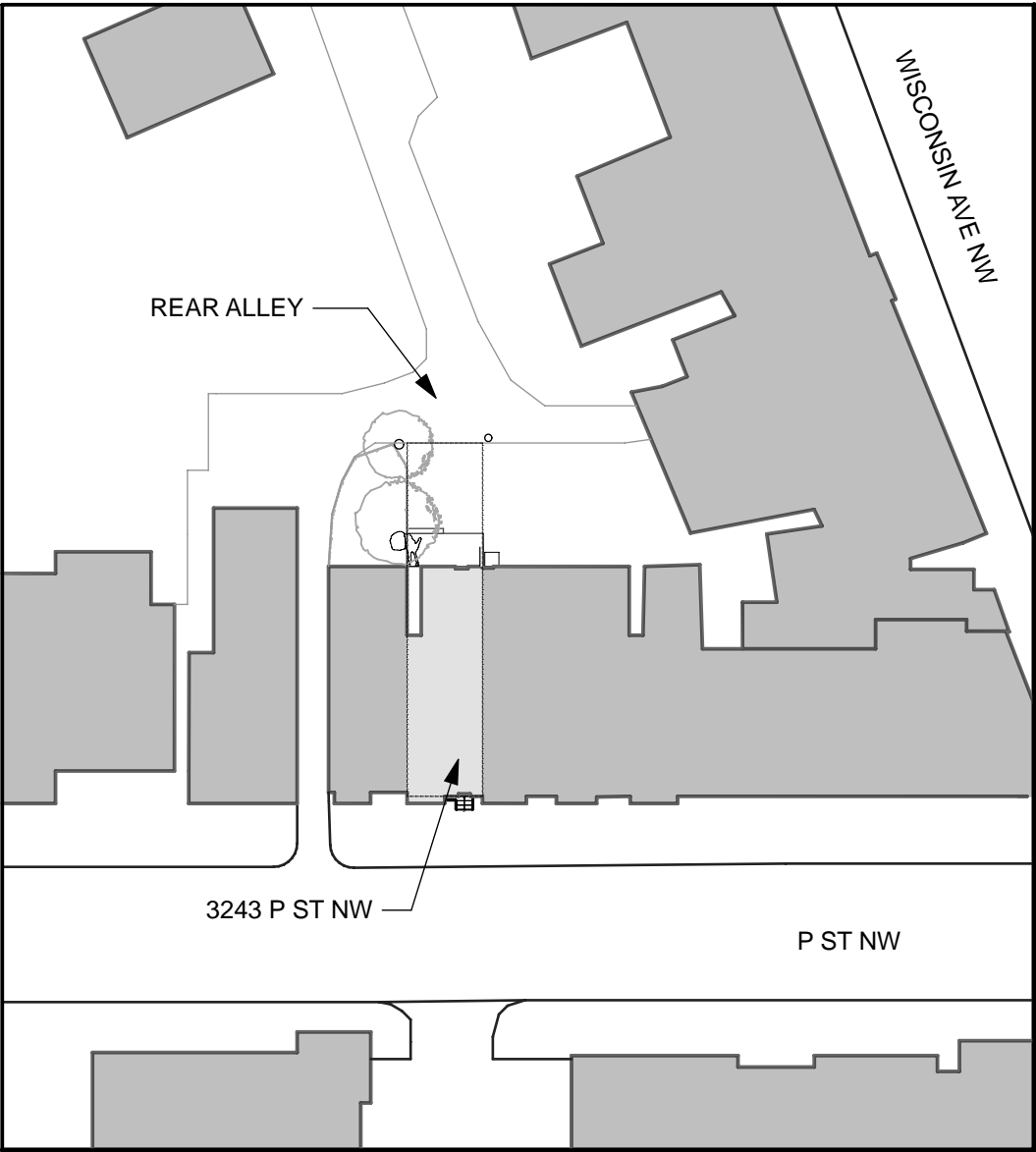


AERIAL CONTEXT PHOTO

PROJECT SITE - 3243 P ST NW



VICINITY PLAN 1" = 800'



1
G1

EXISTING SITE PLAN

0 20' 40' 80'



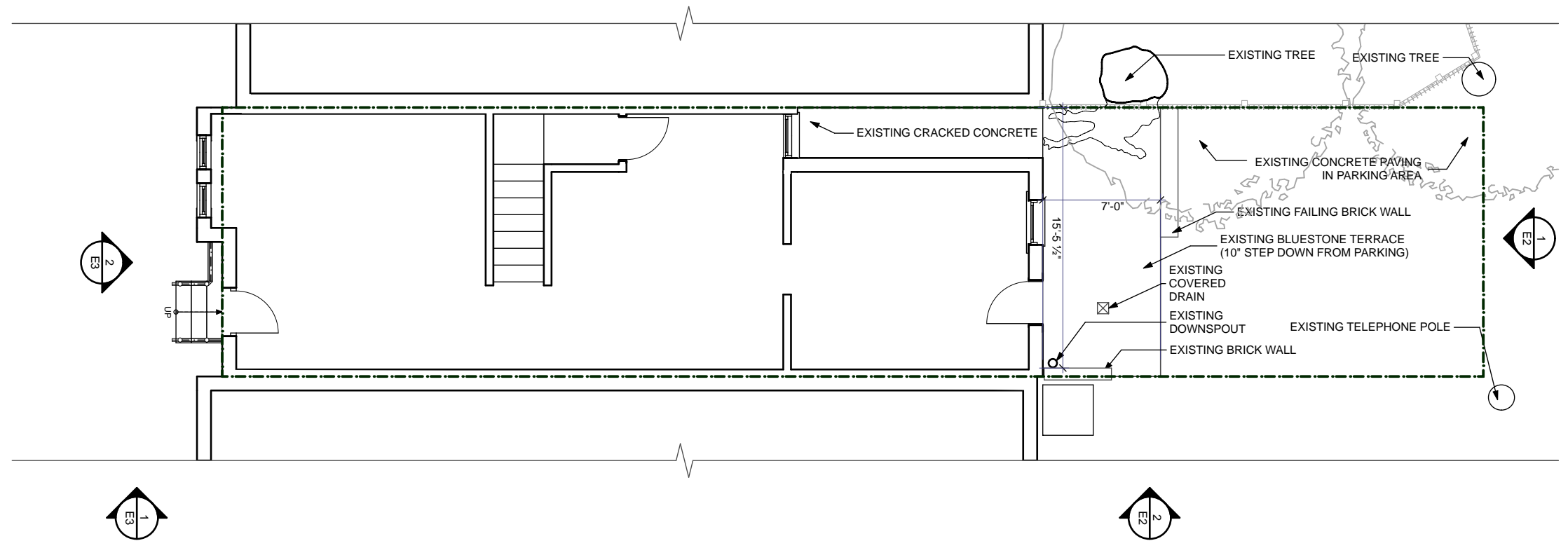
HILL AND HURTT ARCHITECTS
2414 DOUGLAS ST NE
WASHINGTON DC 20018
202.854.1495

Renovation of the Dunner Law Office
3243 P St NW
Washington, DC 20007

OGB CONCEPT
6 FEBRUARY 2020

General Information

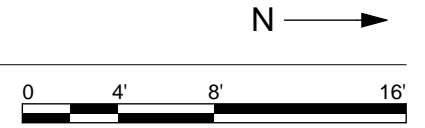
G1

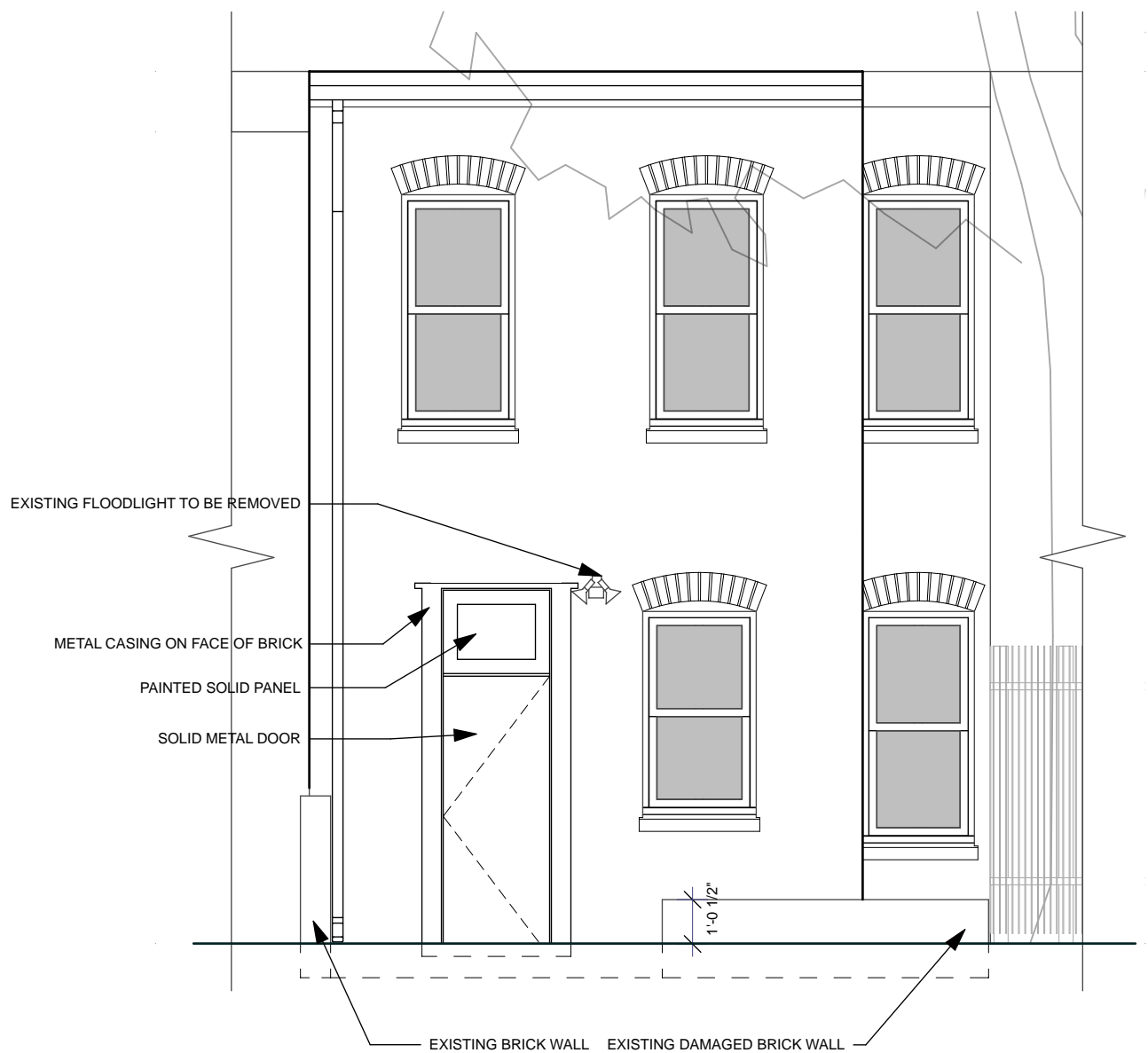


1
E1

First Floor - Existing

SCALE: 1/8" = 1'-0"

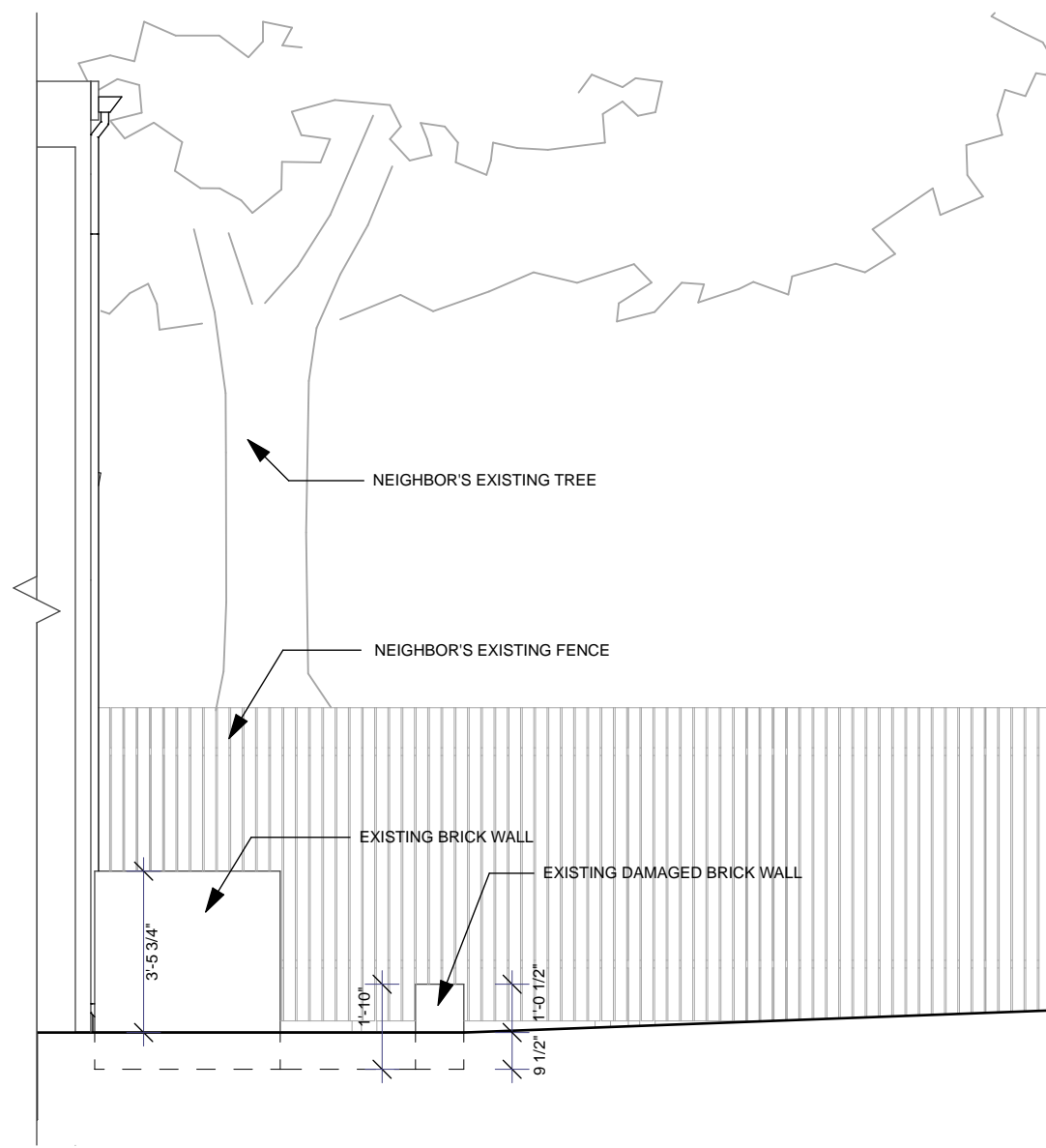




1
E2

North Elevation (Rear) - Existing

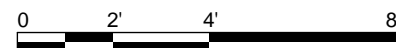
SCALE: 1/4" = 1'-0"



2
E2

East Elevation (Rear) - Existing

SCALE: 1/4" = 1'-0"



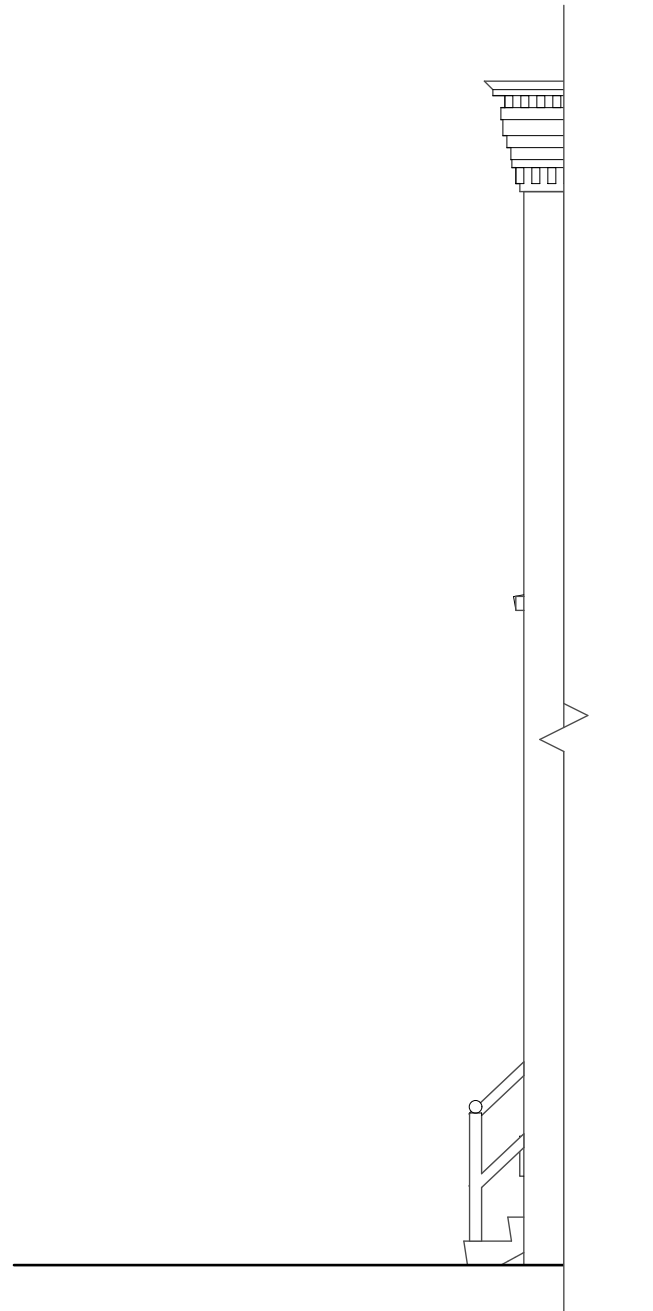
HILL AND HURTT ARCHITECTS
2414 DOUGLAS ST NE
WASHINGTON DC 20018
202.854.1495

Renovation of the Dunner Law Office
3243 P St NW
Washington, DC 20007

OGB CONCEPT
6 FEBRUARY 2020

EXISTING ELEVATIONS

E2



1
E3

East Elevation (Front) - Existing

SCALE: 1/4" = 1'-0"



2
E3

South Elevation (Front) - Existing

SCALE: 1/4" = 1'-0"



HILL AND HURTT ARCHITECTS
2414 DOUGLAS ST NE
WASHINGTON DC 20018
202.854.1495

Renovation of the Dunner Law Office
3243 P St NW
Washington, DC 20007

OGB CONCEPT
6 FEBRUARY 2020

EXISTING ELEVATIONS

E3



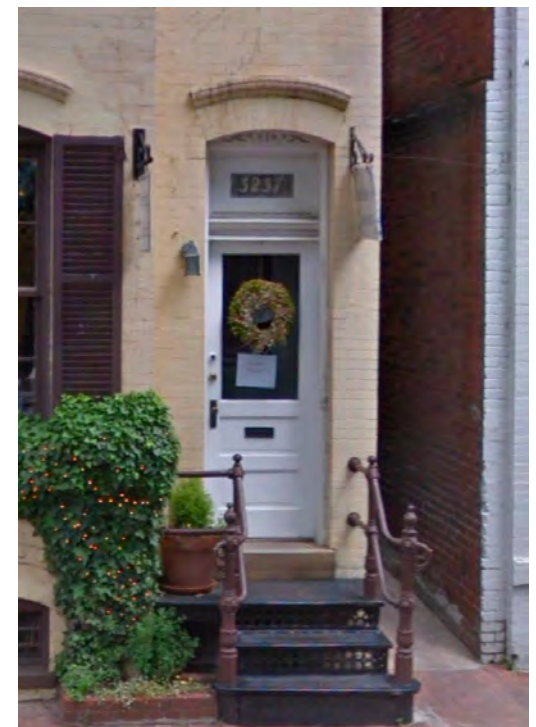
SIGNAGE CONTEXT



SIGNAGE CONTEXT



SIGNAGE CONTEXT



3237 P ST NW BRICK ARCH DETAIL



SOUTH ELEVATION (P ST NW) IN CONTEXT



SOUTH ELEVATION (P ST NW) IN CONTEXT



HILL AND HURTT ARCHITECTS
2414 DOUGLAS ST NE
WASHINGTON DC 20018
202.854.1495

Renovation of the Dunner Law Office
3243 P St NW
Washington, DC 20007

OGB CONCEPT
6 FEBRUARY 2020

EXISTING PHOTOS

E4



NORTH ELEVATION



TERRACE - NE CORNER



EXISTING BRICK WALL



NORTH ELEVATION (ALLEY) IN CONTEXT



HILL AND HURTT ARCHITECTS
2414 DOUGLAS ST NE
WASHINGTON DC 20018
202.854.1495

Renovation of the Dunner Law Office
3243 P St NW
Washington, DC 20007

OGB CONCEPT
6 FEBRUARY 2020

EXISTING PHOTOS



NW CORNER - TREE ROOTS AT COURT



NW CORNER - TREE ROOTS @ TERRACE



NW CORNER - TREE ROOTS @ SITE WALL



HILL AND HURTT ARCHITECTS
2414 DOUGLAS ST NE
WASHINGTON DC 20018
202.854.1495

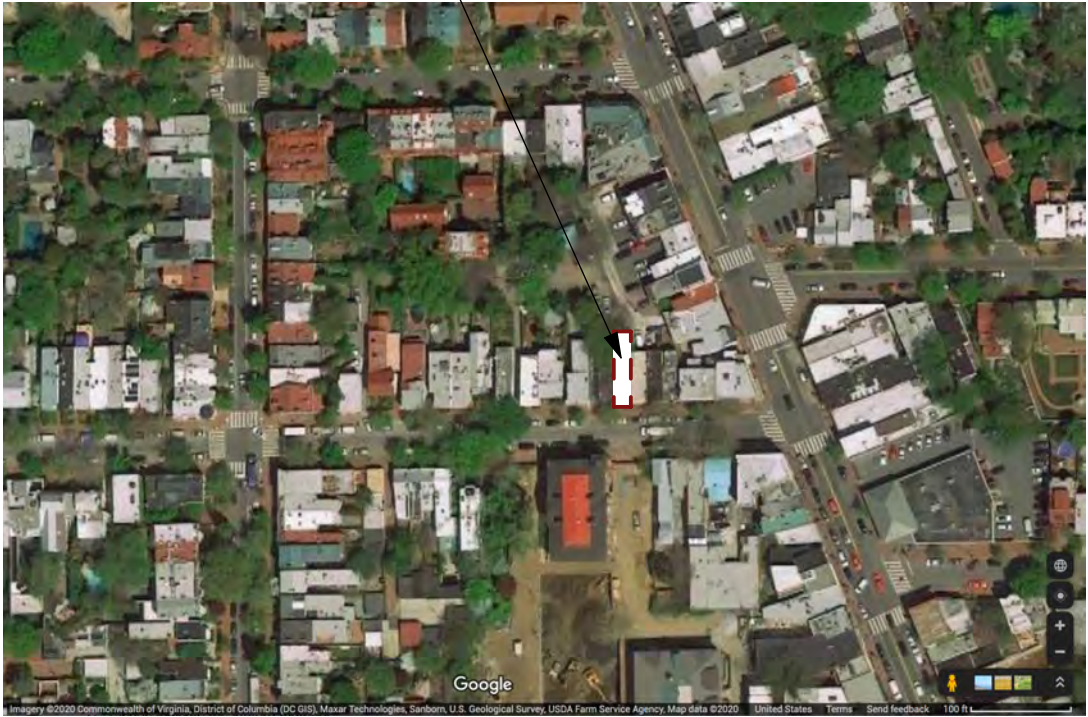
Renovation of the Dunner Law Office
3243 P St NW
Washington, DC 20007

OGB CONCEPT
6 FEBRUARY 2020

EXISTING PHOTOS

E6

PROJECT SITE - 3243 P ST NW

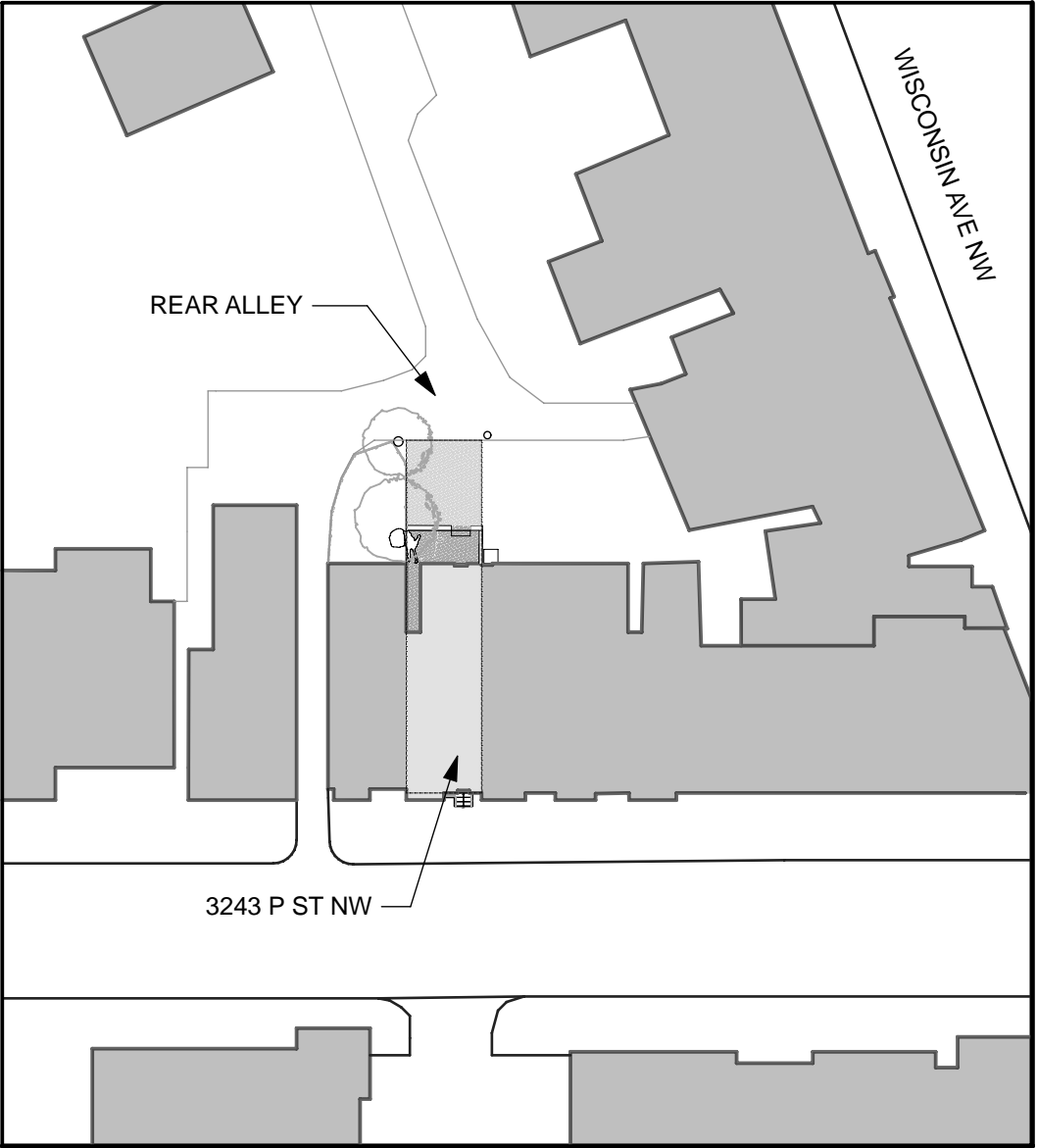


AERIAL CONTEXT PHOTO

PROJECT SITE - 3243 P ST NW



VICINITY PLAN 1" = 800'



1
A0

PROPOSED SITE PLAN



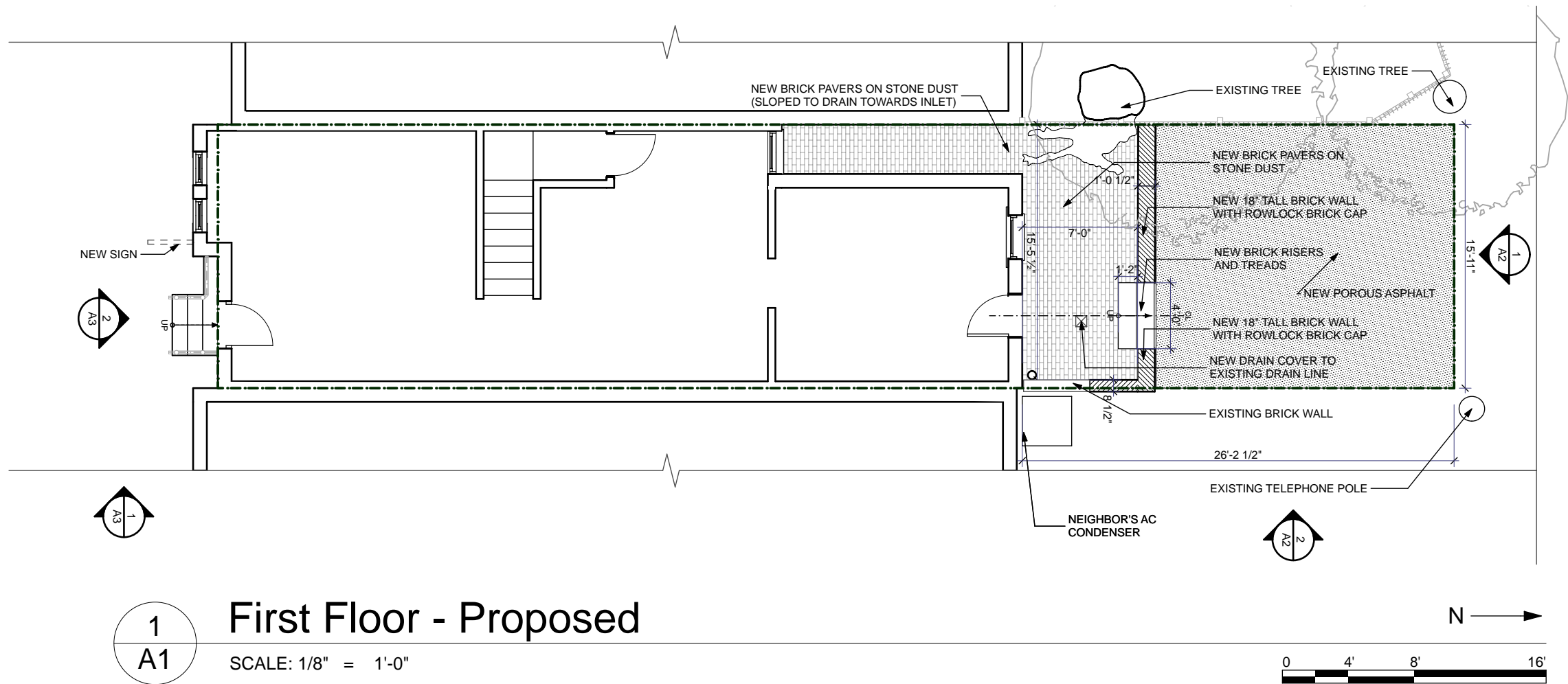
HILL AND HURTT ARCHITECTS
2414 DOUGLAS ST NE
WASHINGTON DC 20018
202.854.1495

Renovation of the Dunner Law Office
3243 P St NW
Washington, DC 20007

OGB CONCEPT
6 FEBRUARY 2020

PROPOSED SITE PLAN

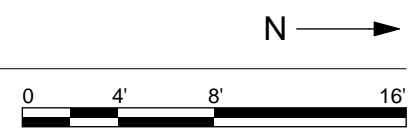
A0



1
A1

First Floor - Proposed

SCALE: 1/8" = 1'-0"



HILL AND HURTT ARCHITECTS
2414 DOUGLAS ST NE
WASHINGTON DC 20018
202.854.1495

Renovation of the Dunner Law Office
3243 P St NW
Washington, DC 20007

OGB CONCEPT
6 FEBRUARY 2020

PROPOSED FLOOR PLAN

A1



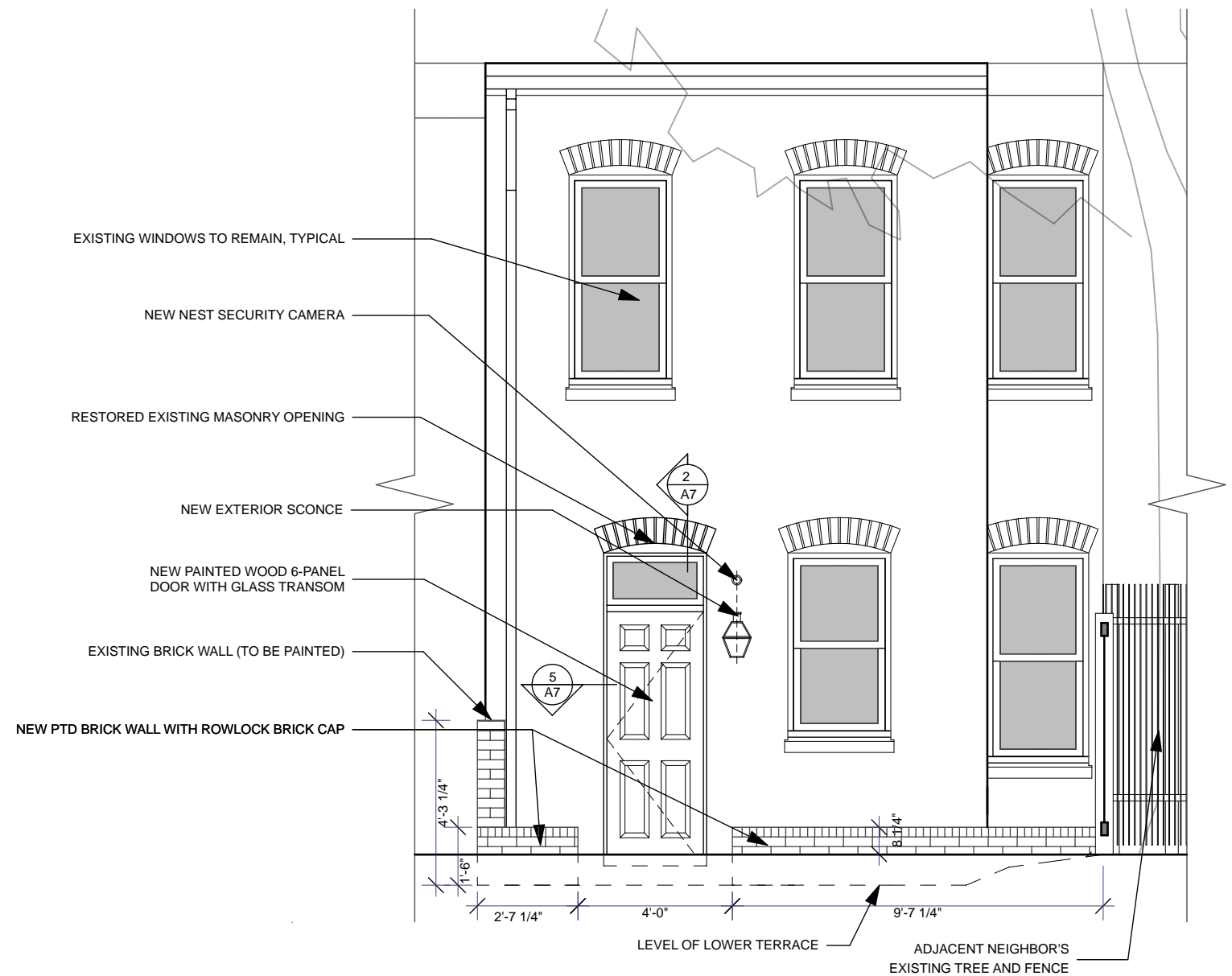
HILL AND HURTT ARCHITECTS
2414 DOUGLAS ST NE
WASHINGTON DC 20018
202.854.1495

Renovation of the Dunner Law Office
3243 P St NW
Washington, DC 20007

OGB CONCEPT
6 FEBRUARY 2020

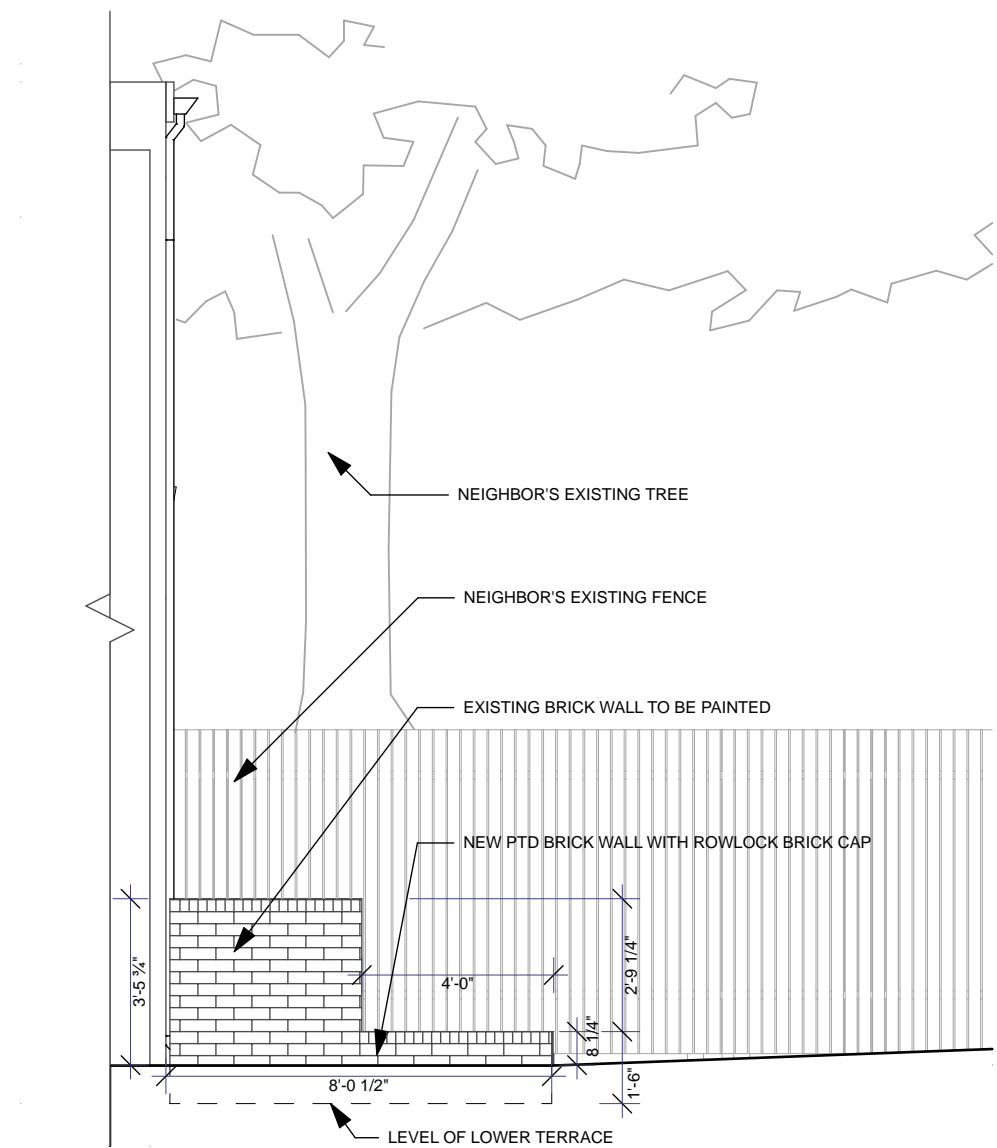
PROPOSED ELEVATIONS

A2



1 North Elevation (Rear) - Proposed
A2

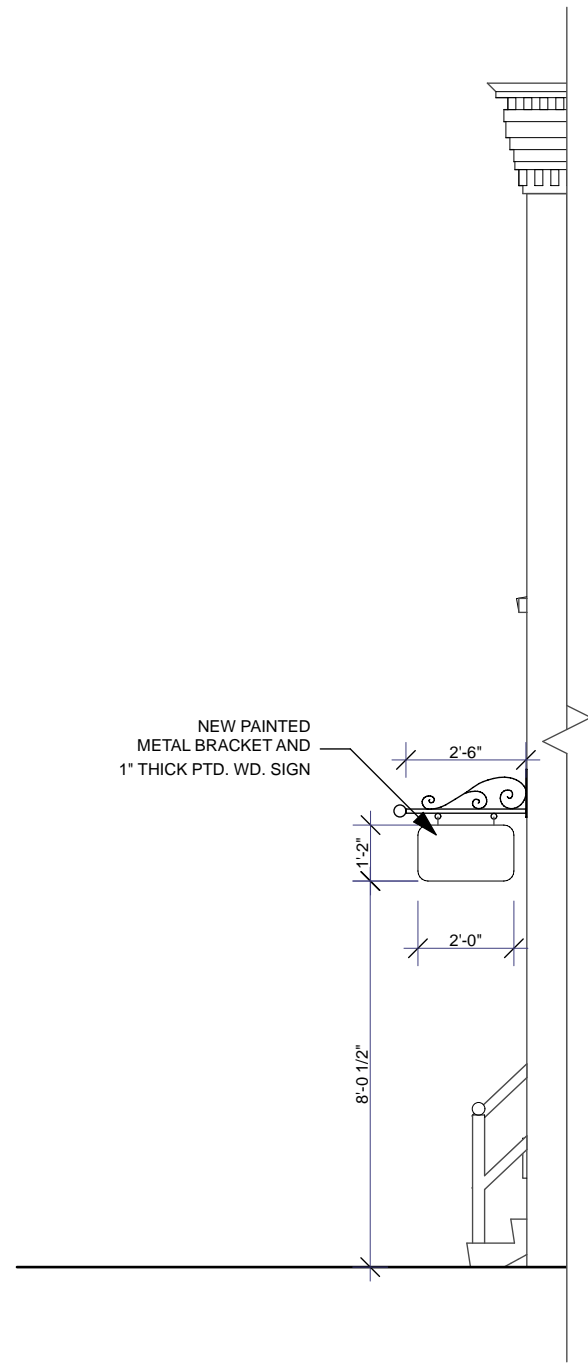
SCALE: 1/4" = 1'-0"



2 East Elevation (Rear) - Proposed
A2

SCALE: 1/4" = 1'-0"

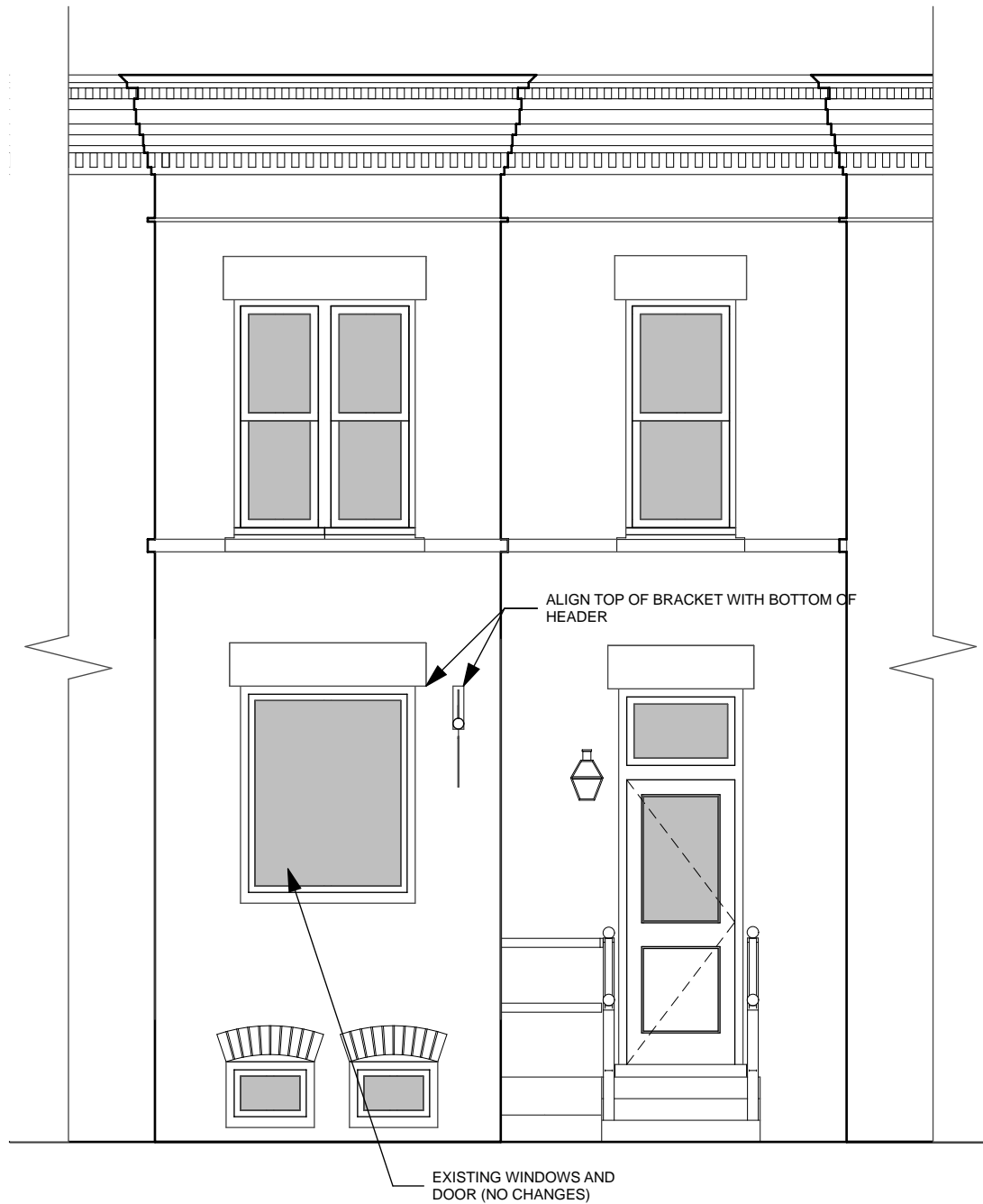




1
A3

East Elevation (Front) - Proposed

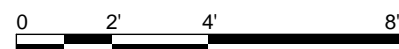
SCALE: 1/4" = 1'-0"



2
A3

South Elevation (Front) - Proposed

SCALE: 1/4" = 1'-0"



HILL AND HURTT ARCHITECTS
2414 DOUGLAS ST NE
WASHINGTON DC 20018
202.854.1495

Renovation of the Dunner Law Office
3243 P St NW
Washington, DC 20007

OGB CONCEPT
6 FEBRUARY 2020

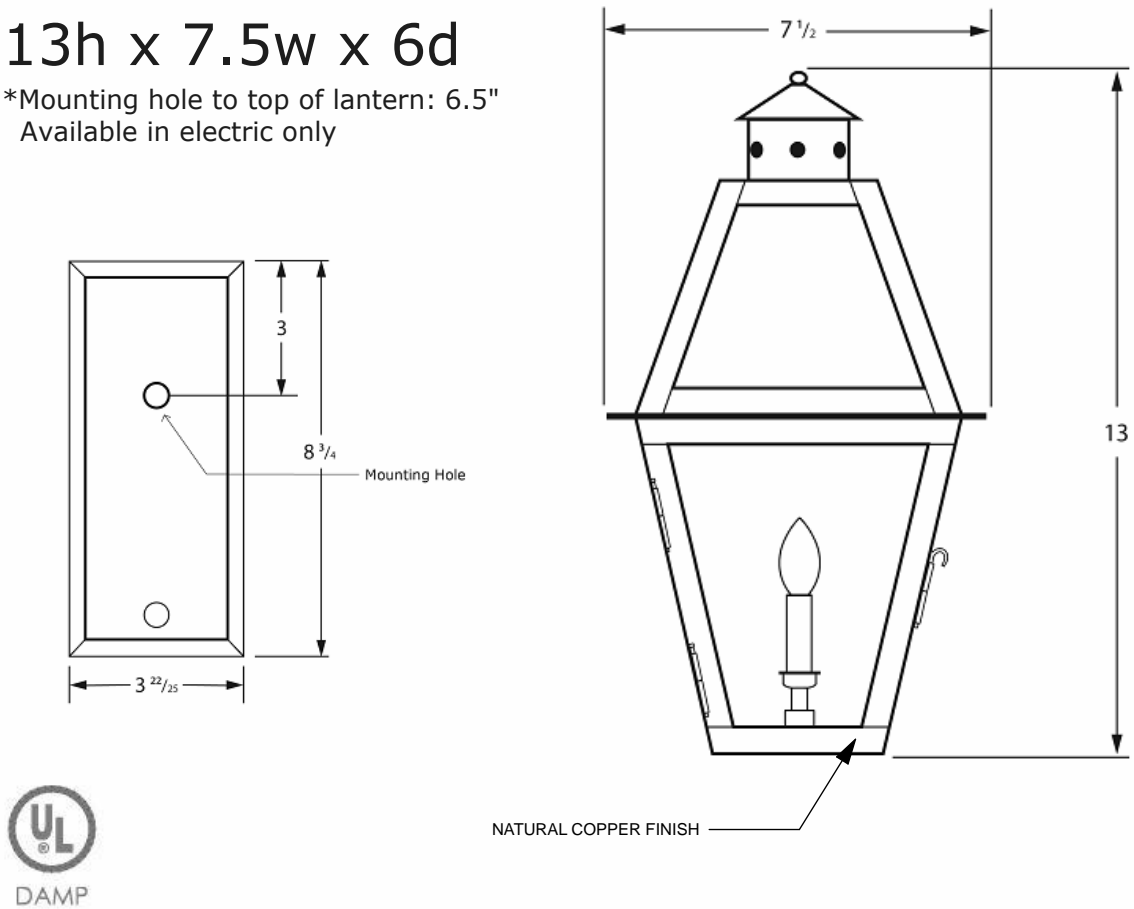
PROPOSED ELEVATIONS

A3

Columbia Series

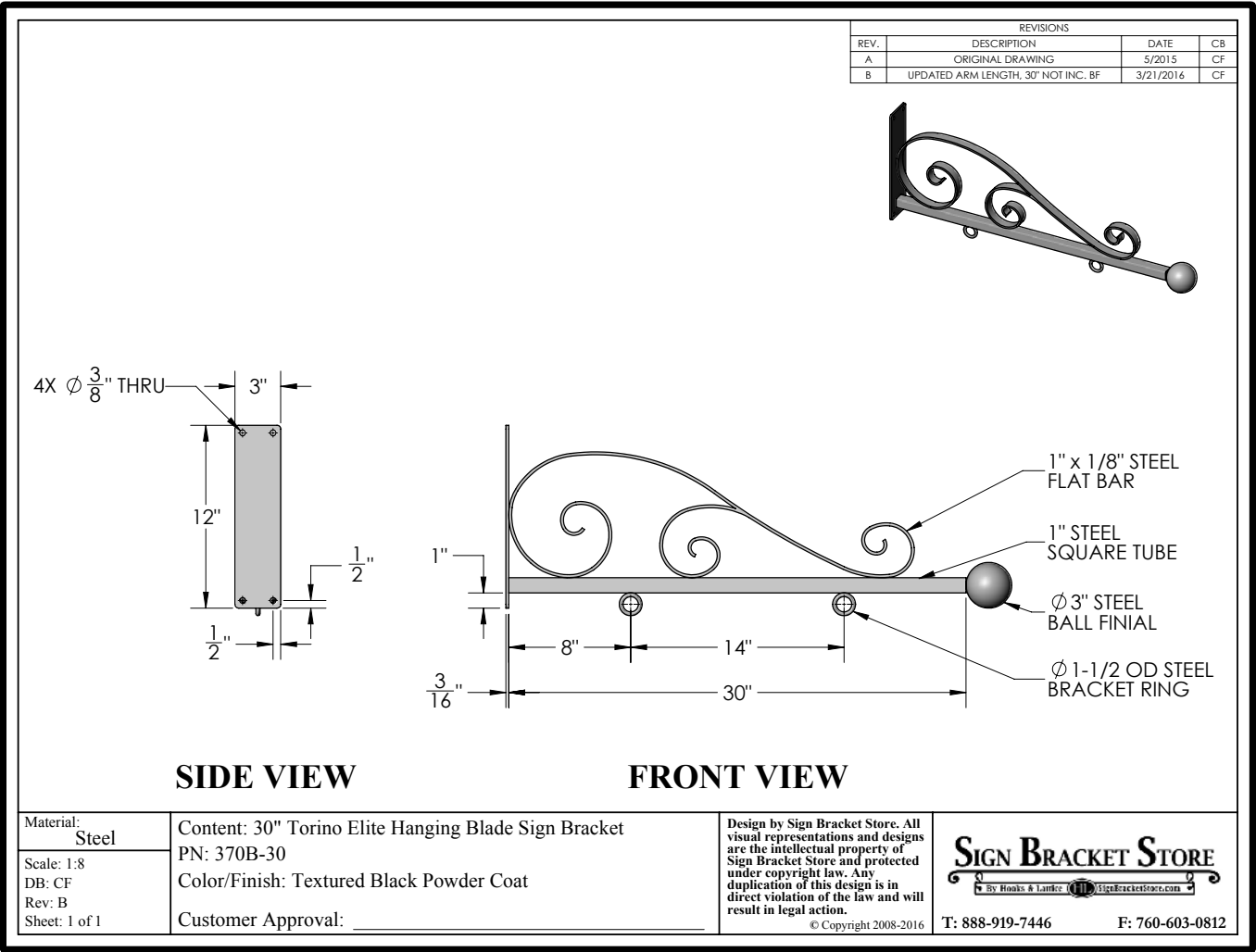
COLA-1 Wall Mount 13h x 7.5w x 6d

*Mounting hole to top of lantern: 6.5"
Available in electric only



1362 Chuck Dawley Blvd
Mount Pleasant, SC 29464
www.carolinalanterns.com
customerservice@carolinalanterns.com

PROPOSED REAR SCONCE



PROPOSED SIGN BRACKET



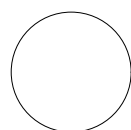
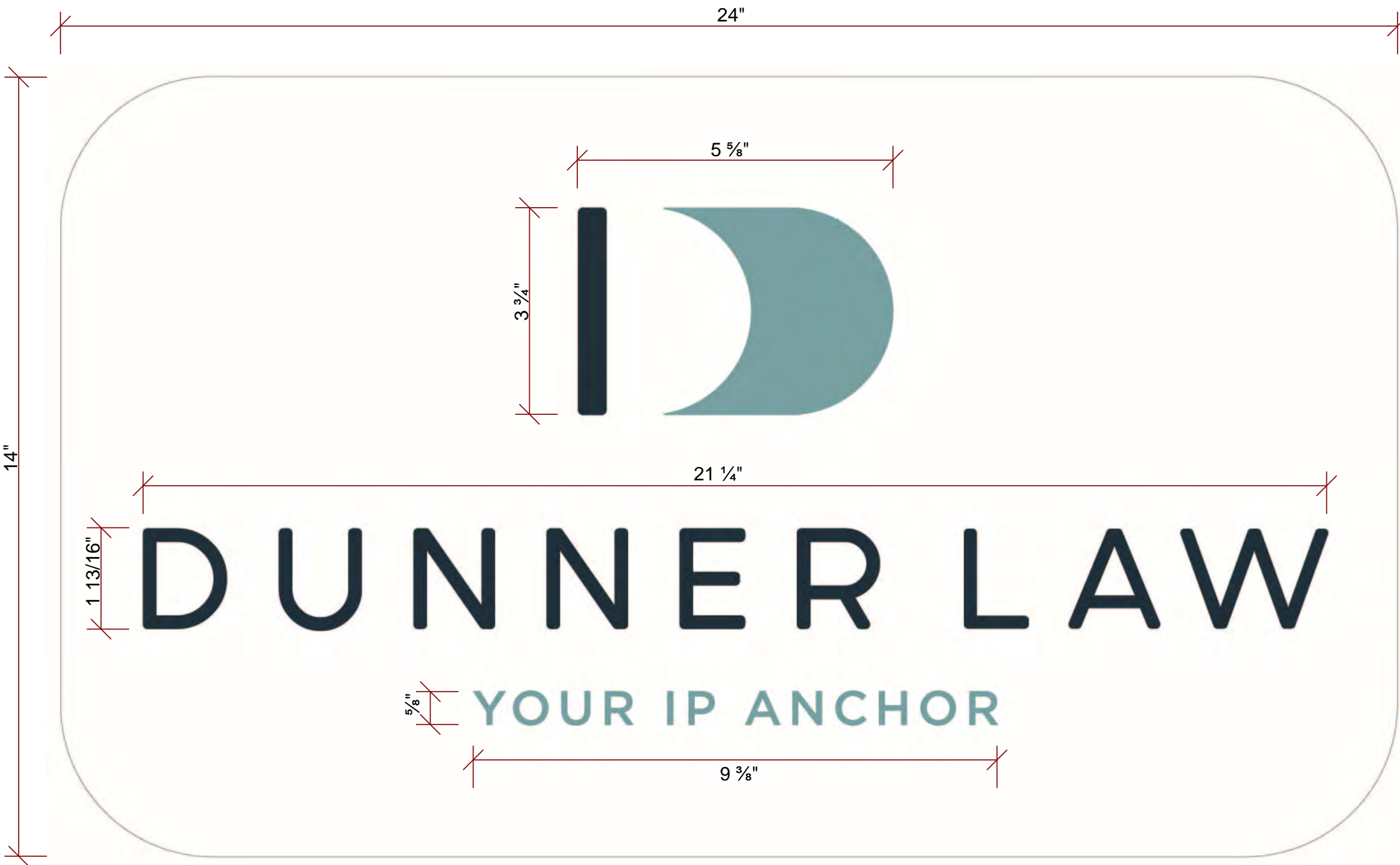
HILL AND HURTT ARCHITECTS
2414 DOUGLAS ST NE
WASHINGTON DC 20018
202.854.1495

Renovation of the Dunner Law Office
3243 P St NW
Washington, DC 20007

OGB CONCEPT
6 FEBRUARY 2020

PROPOSED LANTERN AND BRACKET

A4



PROPOSED 24" X 14" X 1" THICK PAINTED WOOD SIGN

SCALE: 6" = 1'-0"



HILL AND HURTT ARCHITECTS
2414 DOUGLAS ST NE
WASHINGTON DC 20018
202.854.1495

Renovation of the Dunner Law Office
3243 P St NW
Washington, DC 20007

OGB CONCEPT
6 FEBRUARY 2020

PROPOSED SIGNAGE

A5

SPEC SHEET

Nest Cam Outdoor

Security, rain or shine.
On your phone 24/7.



Meet the Nest Cam Outdoor security camera.

Weatherproof. 24/7 live streaming. No dead batteries. Intelligent alerts with Nest Aware.* This is what an outdoor security camera should be.

- 24/7 live video.**
130° view shows you everything in 1080p HD, day and night.

Weatherproof.
Camera, cable and adapter are all weatherproof.

Clear as day. Even at night.
Night Vision evenly illuminates the whole scene.
- Alerts on your phone.**
Get activity alerts so you know if anything happens while you're away.

Install it yourself.
And point it anywhere with the unique magnetic mount. No hub required.

Talk and listen.
See who's at the door and talk back to get their attention.
- Person alerts.**
So you know when someone's actually there.

See the whole story.
Continuously record up to 30 days of video in the cloud. And quickly find what you're looking for in the Nest app.
- Create clips.**
Create a custom clip or timelapse to download and share with friends, neighbors or the police.

*With a Nest Aware subscription, sold separately. Each camera comes with a free trial.

SPECS

- Color**

 - White

Camera

 - 1/3-inch, 3-megapixel sensor with millions of colors
 - 8x digital zoom

Video

 - Up to 1080p (1920 x 1080) at 30 frames/sec
 - H.264 encoding

Field of view

 - 130° diagonal

Night Vision

 - 8 high-power infrared LEDs (850 nm) with IR cut filter

Audio and lights

 - Speaker
 - Microphone
 - RGB LED

Operating temperature

 - -4 to 104°F (-20 to 40°C)

Weather resistance

 - IP65 rating
- Power**

 - AC adapter input: 100-240V AC, 50/60Hz, 0.2A
 - AC adapter output: 5V DC, 1.4A
 - Camera input: 5V DC, 1.0A

Security

 - 128-bit AES with TLS/SSL

Size and weight

 - Mass: 11.0 oz (313 g)
 - Height: 2.8 in (7.2 cm)
 - Width: 2.8 in (7.2 cm)
 - Depth: 3.5 in (8.9 cm)
 - Total cable length: 25 ft (7.5 m)

Wireless

 - Wi-Fi 802.11a/b/g/n, 2.4GHz or 5GHz (WEP, WPA, WPA2 encryption supported)
 - Bluetooth Low Energy (BLE)

Connectivity requirements

 - Wi-Fi connection.
 - Working broadband internet connection with at least 2 Mbps upload speed (DSL may not qualify).
- Free Nest app and a compatible phone or tablet with iOS 8 or later or Android 4 or later and Bluetooth 4.0. Or set it up from your computer using USB and a web browser.

Languages

 - English
 - French
 - Dutch
 - Spanish

Green

 - Recyclable packaging

Warranty

 - 2-year limited warranty. For support, visit [nest.com/support](#)
 - Our support team is also available seven days a week.

IN THE BOX	<ul style="list-style-type: none">• Nest Cam Outdoor security camera• Mounting magnet• Camera wall plate	<ul style="list-style-type: none">• Power adapter• Adapter wall plate• Nest screws• Wall anchors	<ul style="list-style-type: none">• Cable clips• Installation Guide• Welcome Guide
BANDWIDTH REQUIREMENTS	<ul style="list-style-type: none">• At 720p, each camera requires 200 to 500 Kbps of upload bandwidth while streaming video.• At 1080p, each camera requires 450 to 1200 Kbps of upload bandwidth while streaming video.	<ul style="list-style-type: none">• Cameras will use more bandwidth to stream video when there is more motion in the scene.• If you subscribe to Nest Aware, your camera streams all video to the cloud for secure offsite storage. At 720p, each camera	<p>could use 60GB to 160GB of upload bandwidth per month. At 1080p, each camera could use 140GB to 380GB of upload bandwidth per month.</p>



3400 Hillview Ave
Palo Alto, CA 94304

1-855-VIP-NEST
[nest.com](#)



3400 Hillview Ave
Palo Alto, CA 94304

1-855-VIP-NEST
[nest.com](#)

nr11513



HILL AND HURTT ARCHITECTS
2414 DOUGLAS ST NE
WASHINGTON DC 20018
202.854.1495

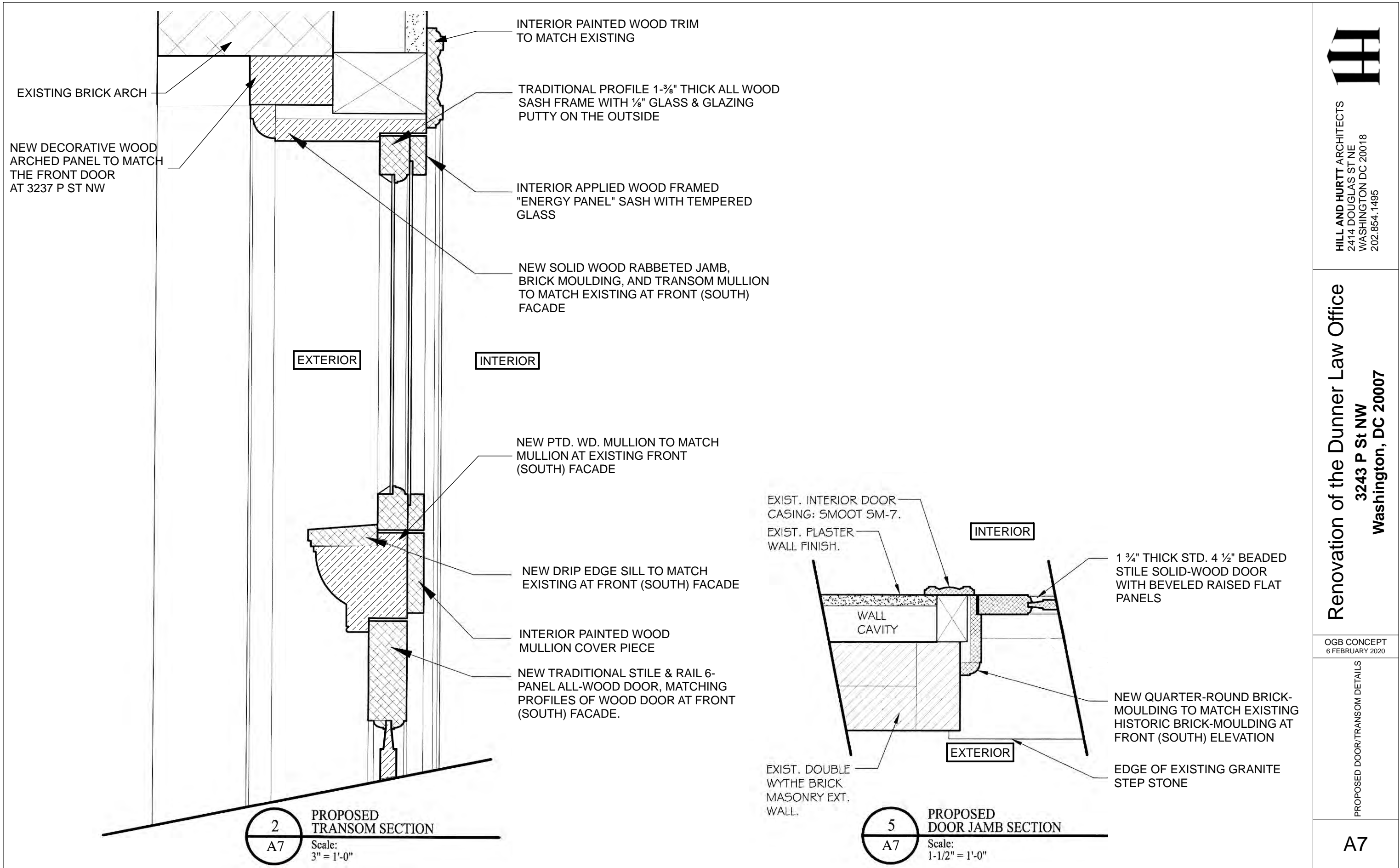
Renovation of the Dunner Law Office
3243 P St NW
Washington, DC 20007

OGB CONCEPT
6 FEBRUARY 2020

PROPOSED SECURITY CAMERA

A6

PROPOSED SECURITY CAMERA



HILL AND HURTT ARCHITECTS
2414 DOUGLAS ST NE
WASHINGTON DC 20018
202.854.1495

Renovation of the Dunner Law Office
3243 P St NW
Washington, DC 20007

OGB CONCEPT
6 FEBRUARY 2020

PROPOSED DOOR/TRANSOM DETAILS

A7