

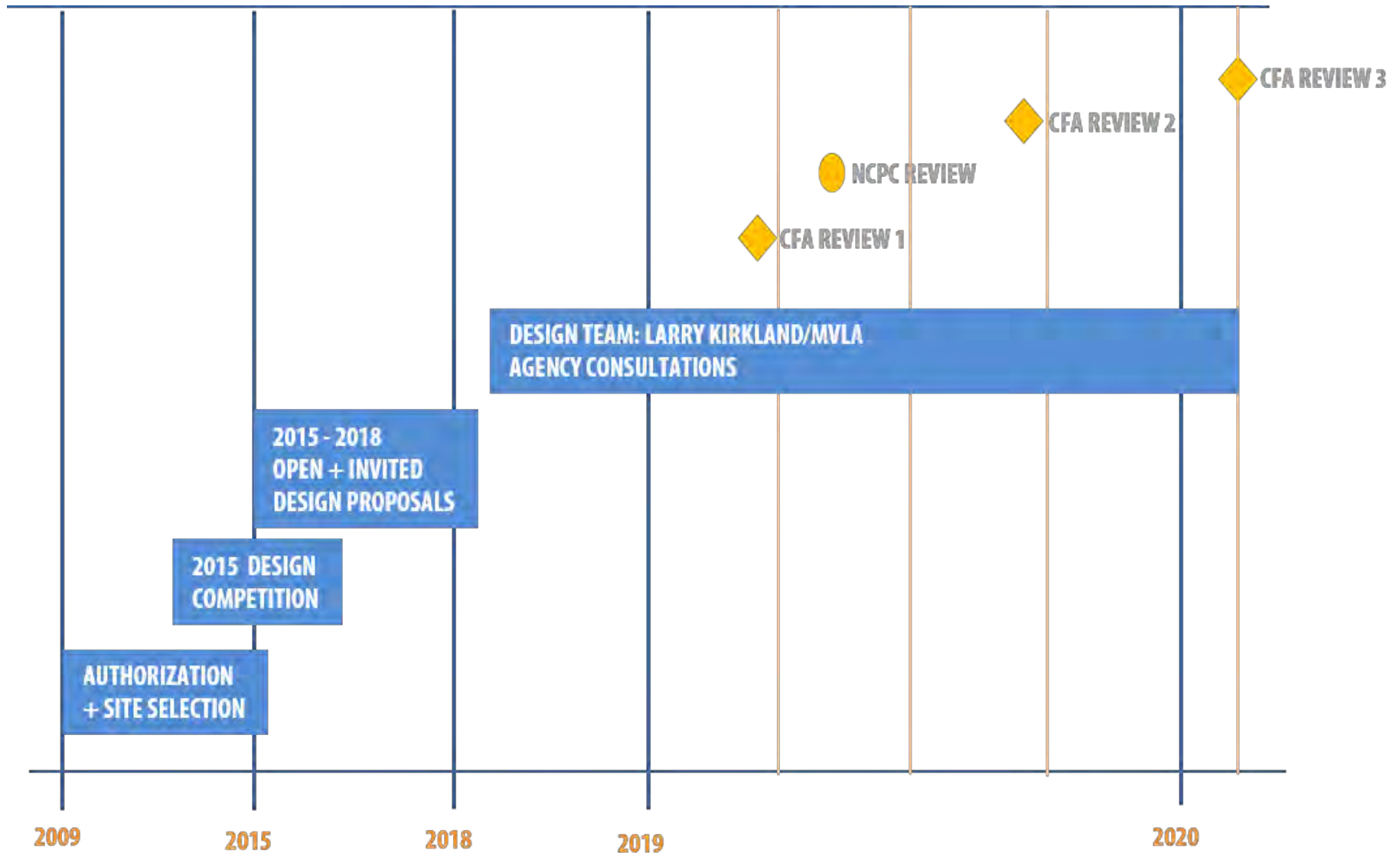


PEACE CORPS COMMEMORATIVE

at Peace Corps Park

U.S. COMMISSION OF FINE ARTS
FEBRUARY 20, 2020

PEACE CORPS TIMELINE



Americans and people of the world, interacting in mutual respect and trust, can create a better and more peaceful world.



A photograph of a woman wearing a pink baseball cap and a blue t-shirt, smiling and hugging a young girl with dark hair wearing a white t-shirt. They are outdoors in a wooded area with trees and a gravel path in the background.

PURPOSE

- Honor and celebrate those attributes of the American ethos that motivated the creation of the Peace Corps in 1961
- Acknowledge the **“better angels of our nature”**
- Remind us of the value of working, teaching and learning alongside people in mutual respect and trust
- Communicate to all that **America’s outstretched** hand, reaching voluntarily around the world, can thereby enhance mutual understanding and promote peace

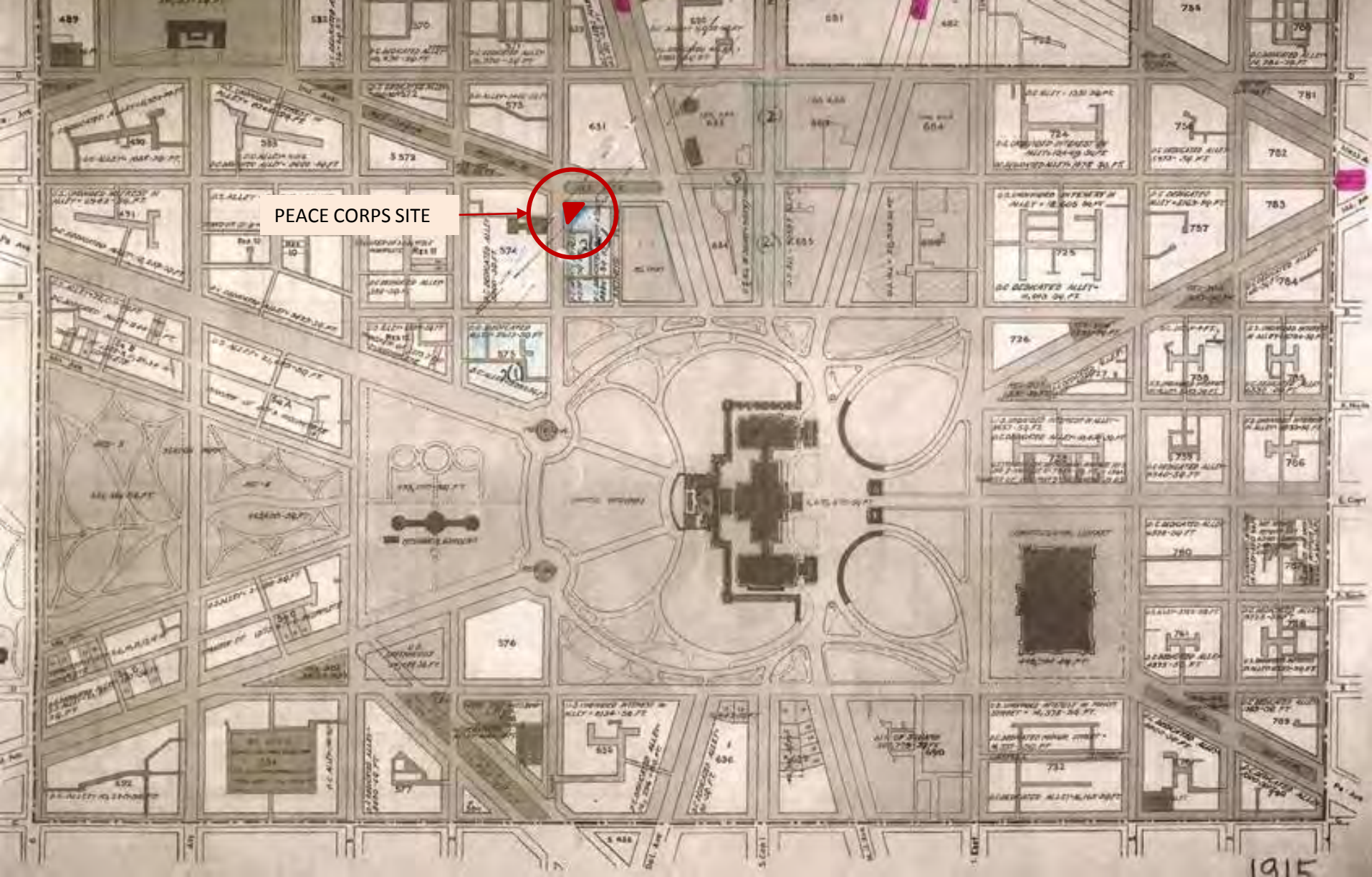


VALUES AND SPIRIT IN DESIGN

- central gathering place in the spirit of Americans living **and working together with the world's peoples** to help meet needs
- world map without national and political boundaries, symbolizing transcendence of cultural, ethnic, religious and economic barriers to promote understanding and peace,
- sculptural benches with hands expressing human outreach, giving and receiving, teaching and learning,
- sculptural glass/metal pergola with leaf elements differently positioned and colored yet forming and sharing in a unified composition symbolizing unity from diversity - **"e pluribus unum"**
- treed and vegetated public park welcoming the neighborhood and connected visually to the Capitol Grounds - visitors become participants in the Commemorative experience

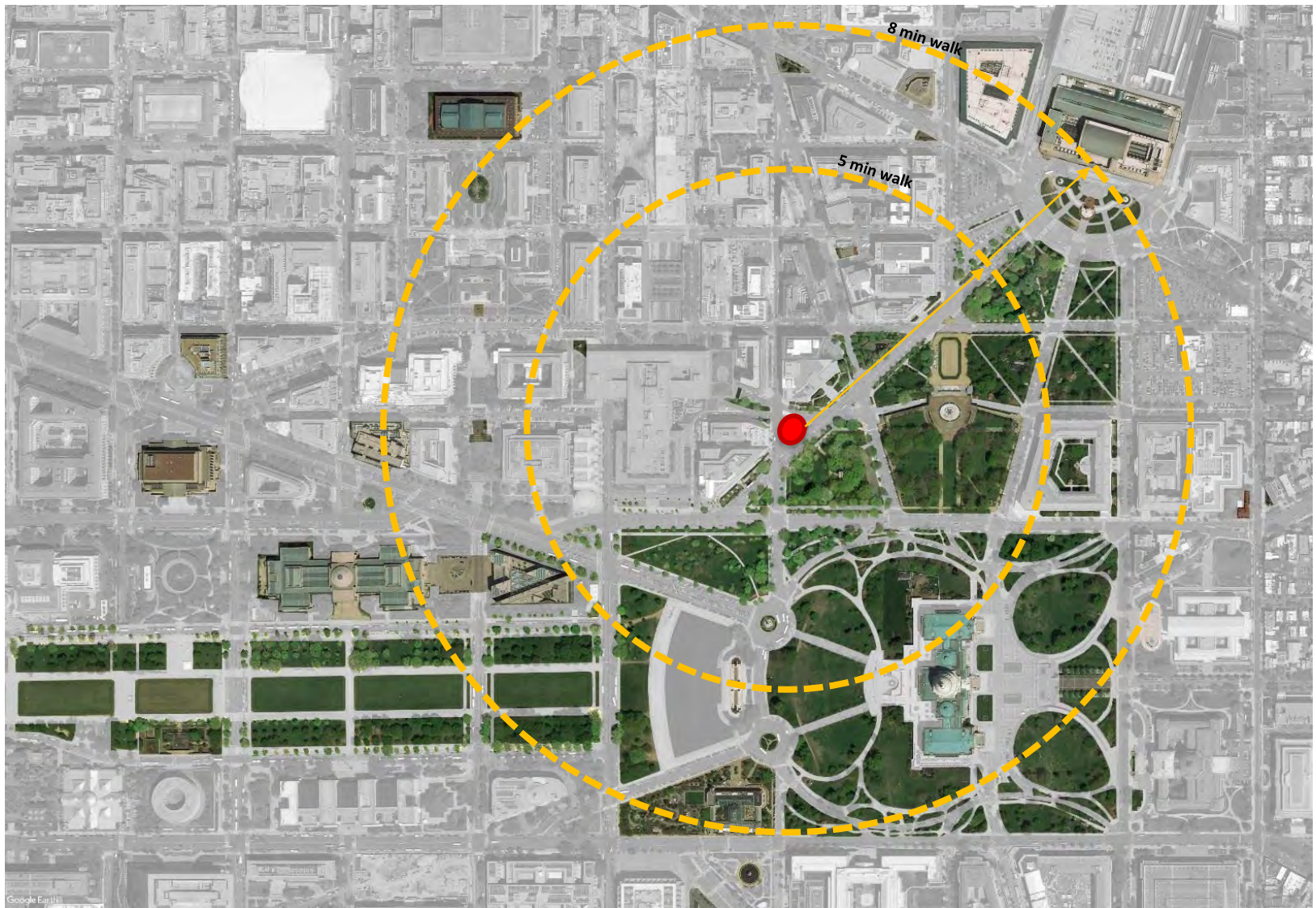




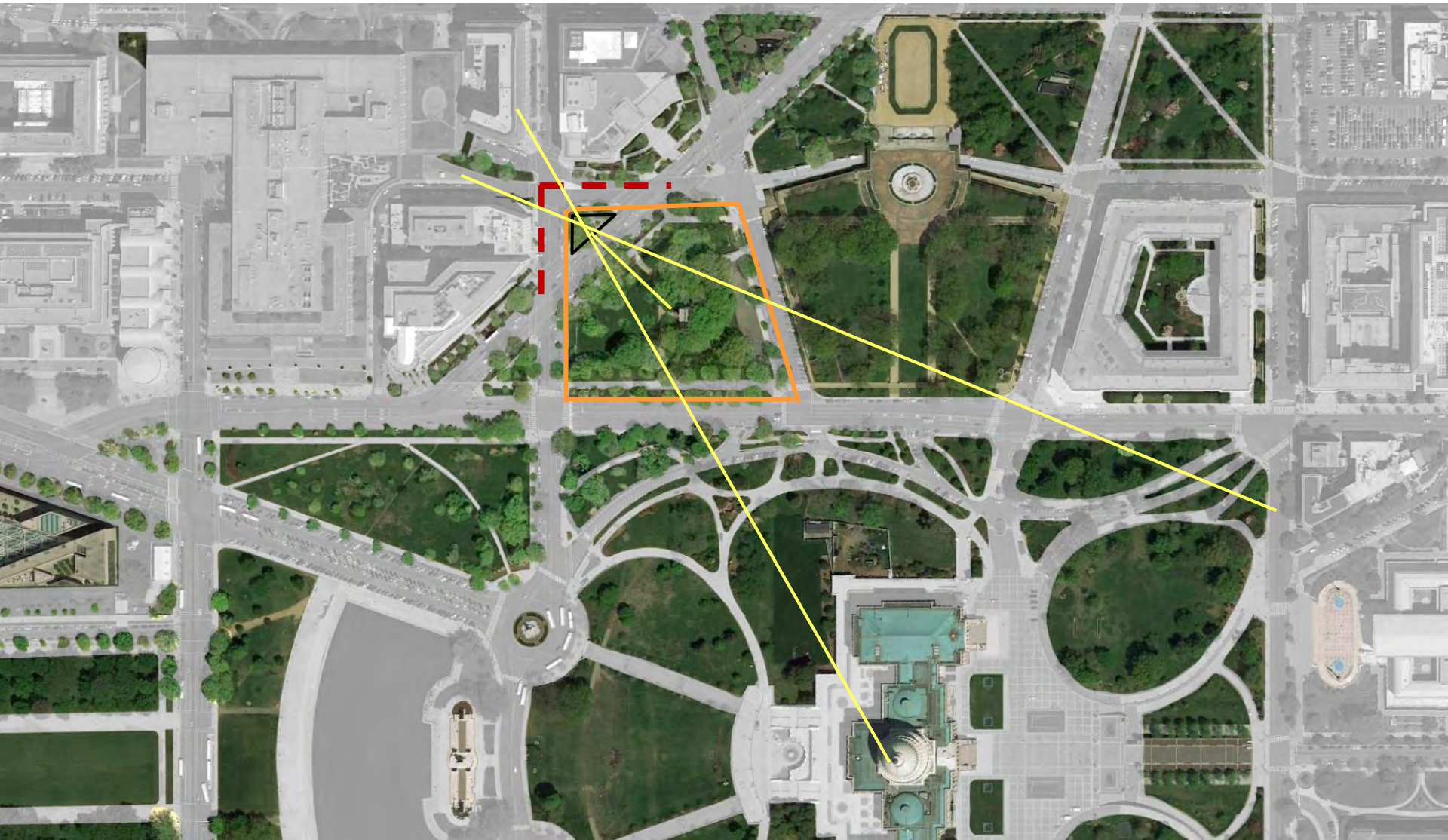




1928 NCPC Plan

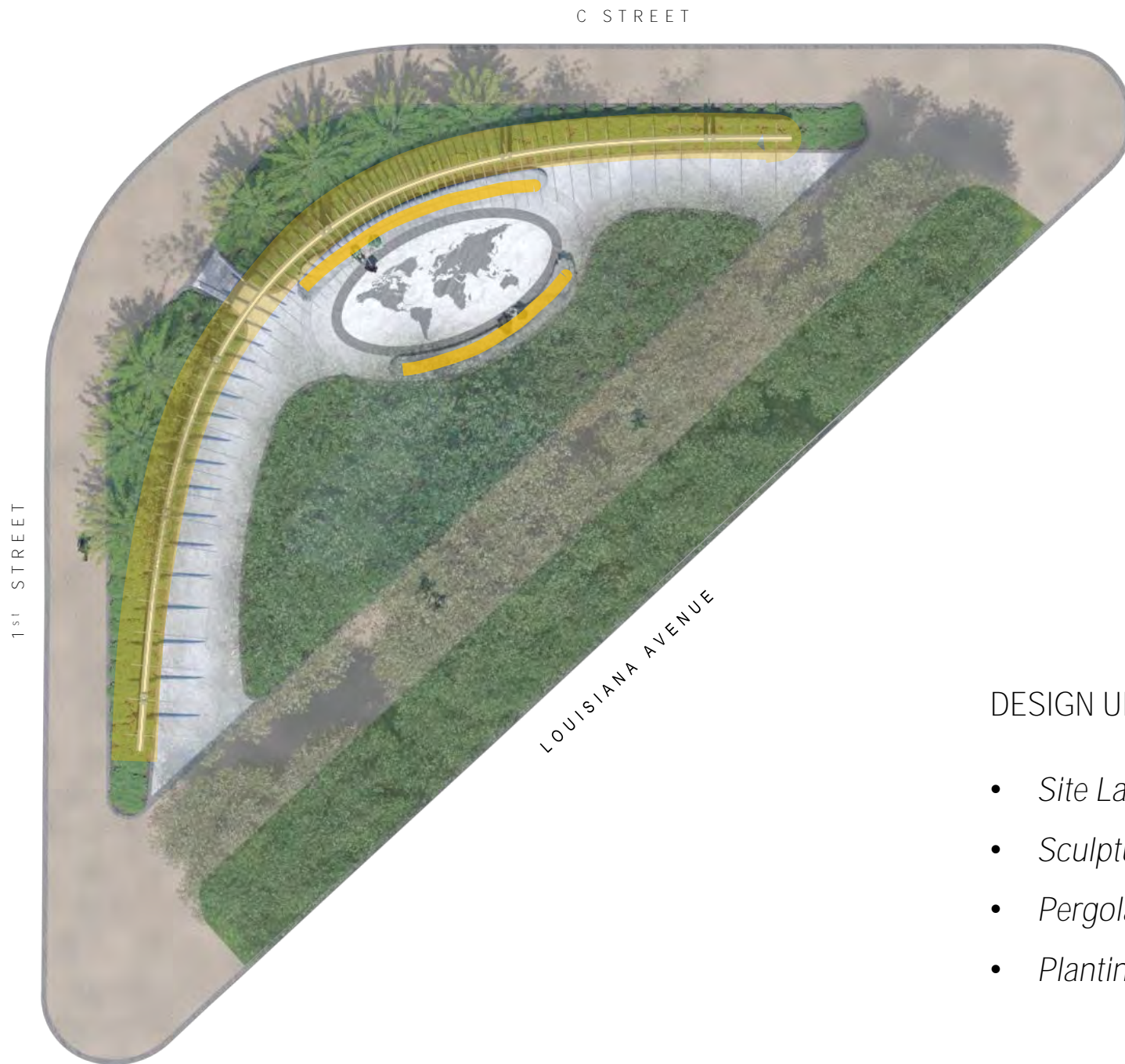


5-minutes to the Capitol
8-minutes to Union Station



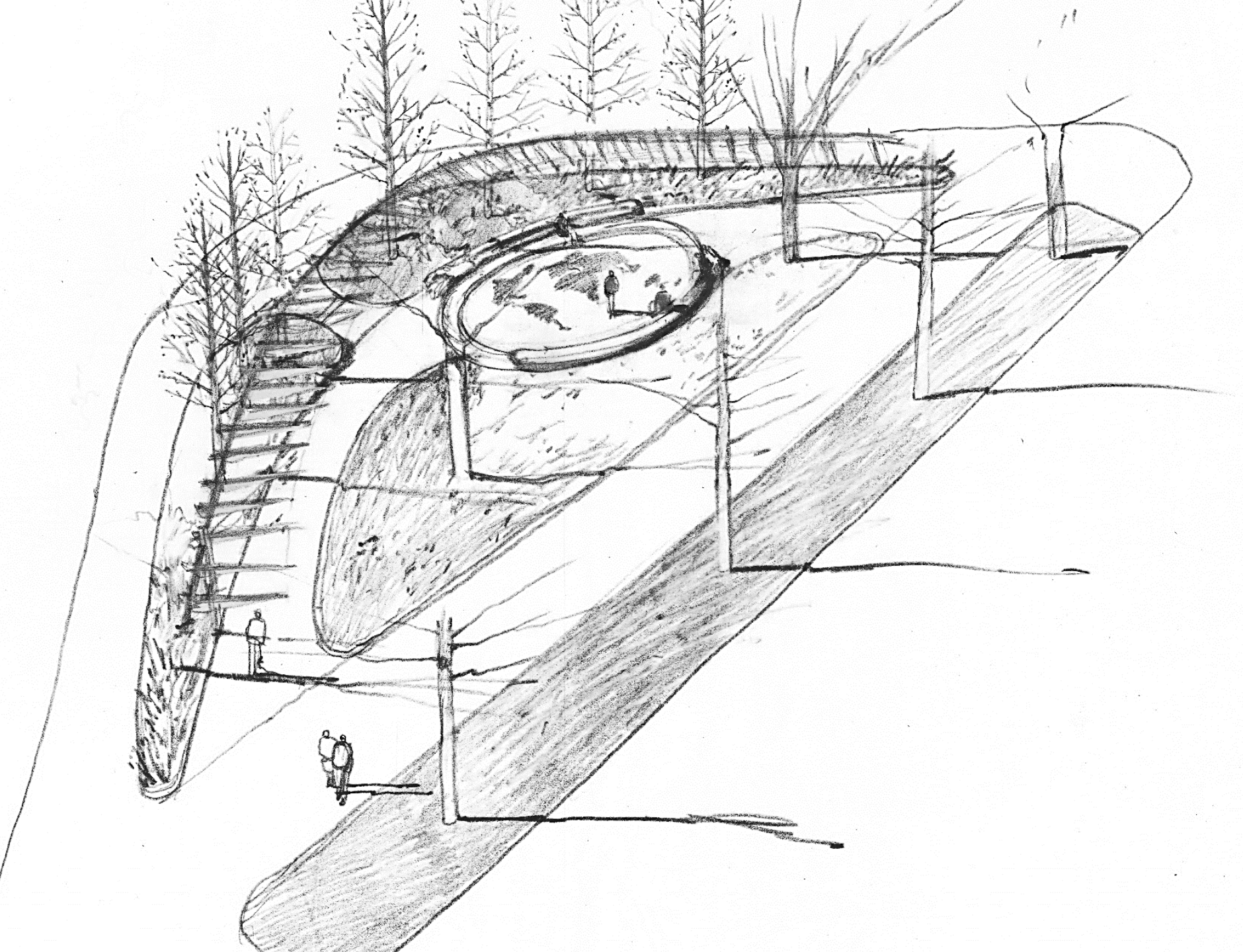
- Site Building Frame ---
- Site Landscape Connection ---
- Sight - Lines ---

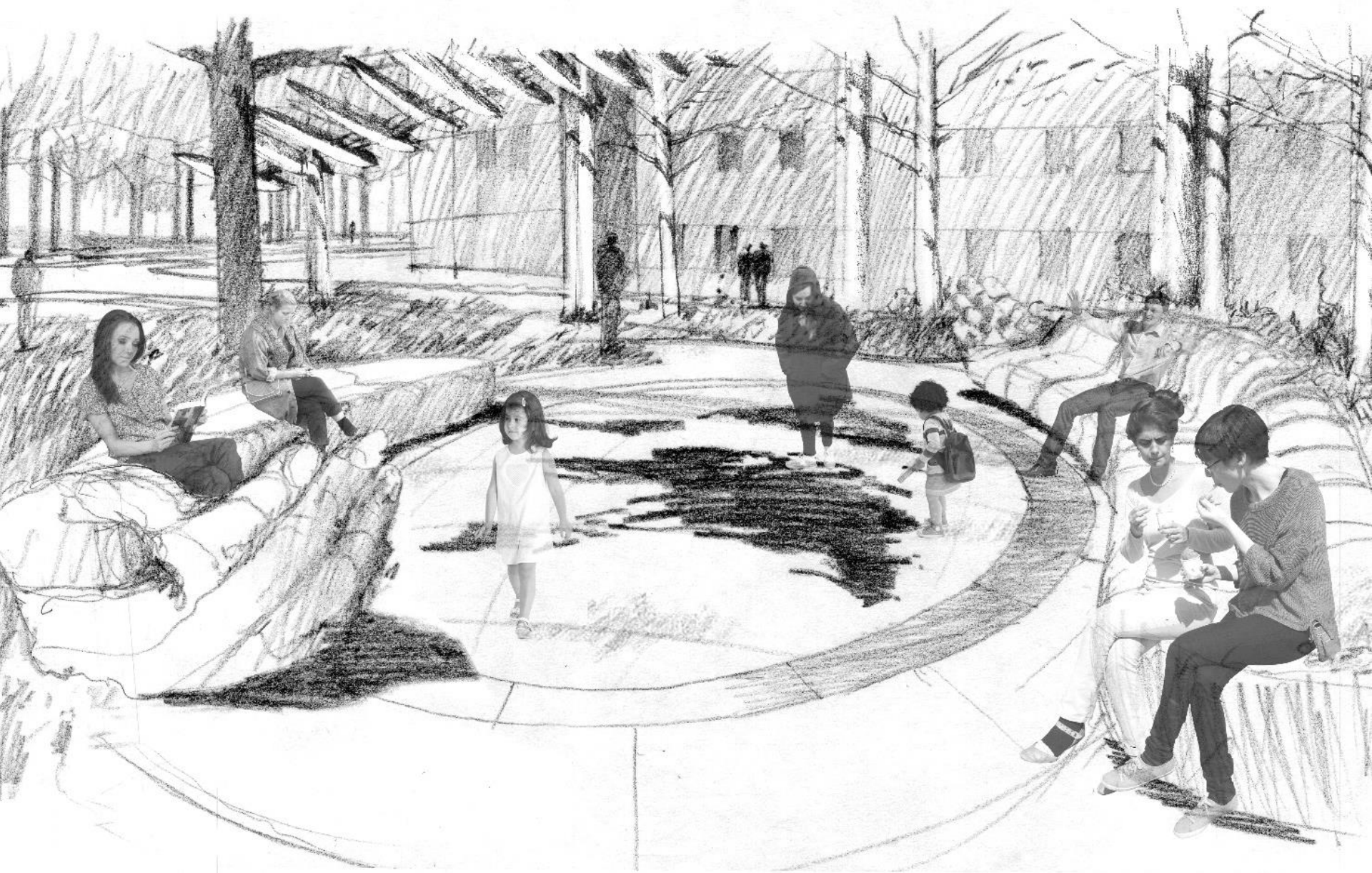


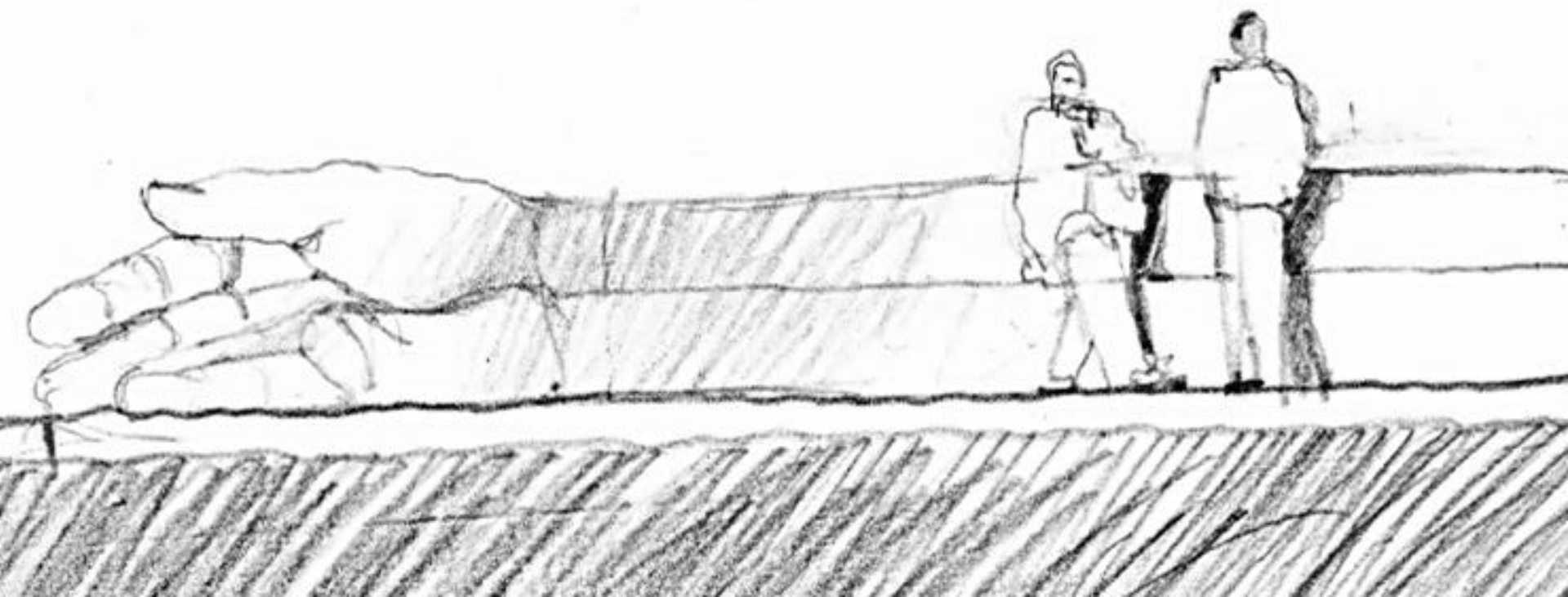


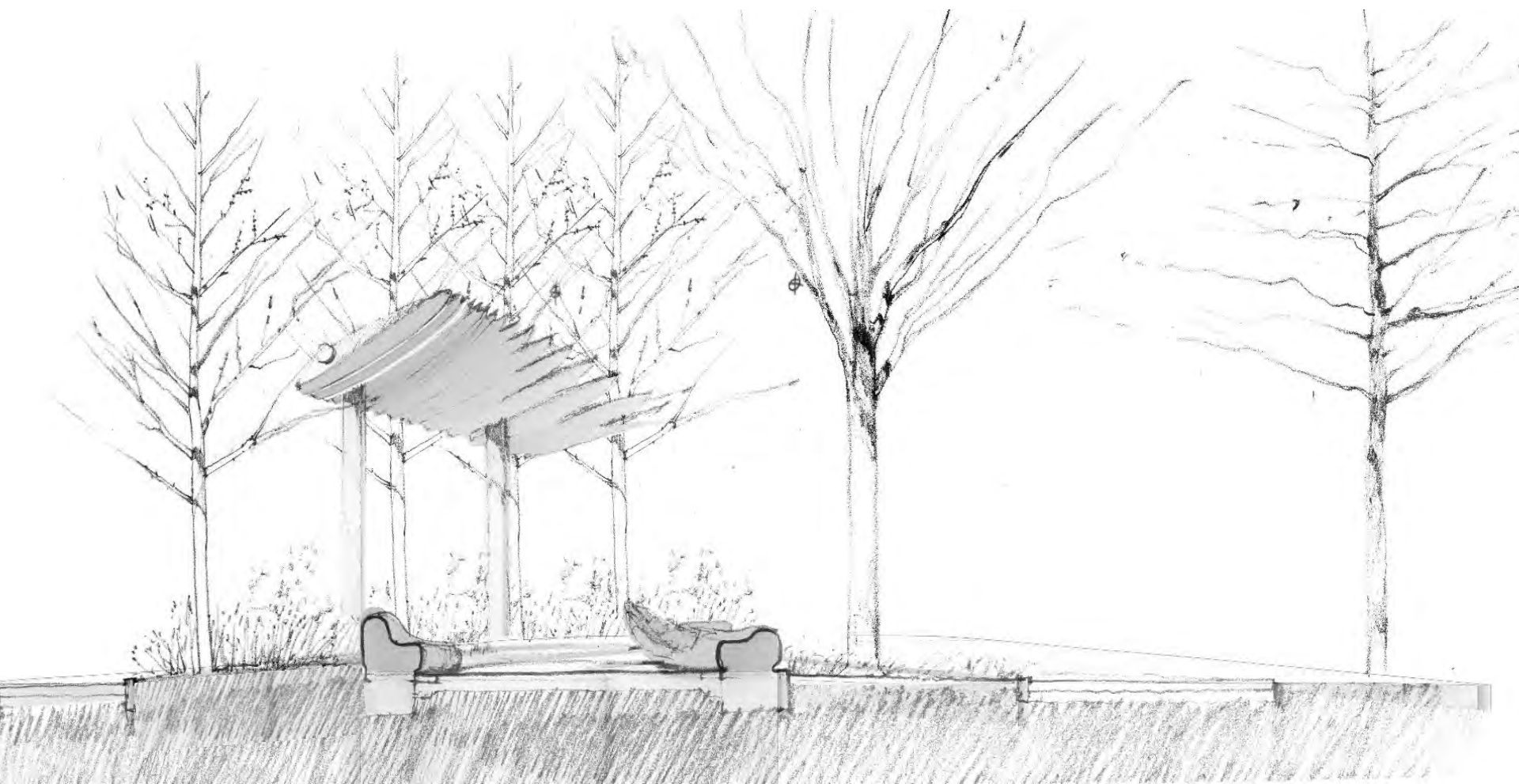
DESIGN UPDATE

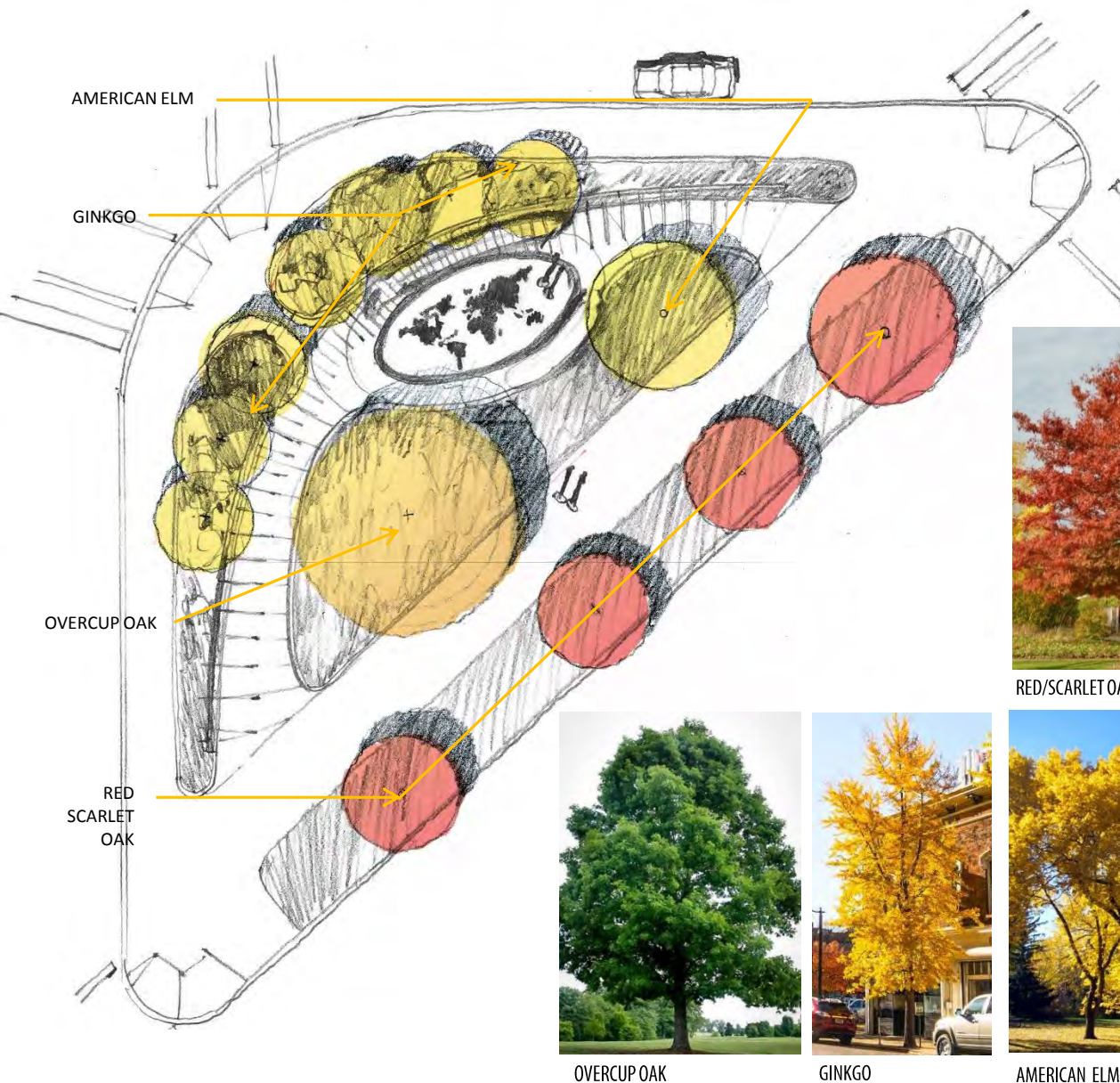
- *Site Layout/Paths*
- *Sculptural benches*
- *Pergola*
- *Planting*











PLANTING PALETTE

- Connects site to Capitol Grounds
- Ginkgo trees complement pergola along C / 1st Streets
- Matrix of riparian evergreen and perennial plants at ground plane
- DOEE stormwater **regulations require 1.2"** rainfall to be retained



RED/SCARLET OAK



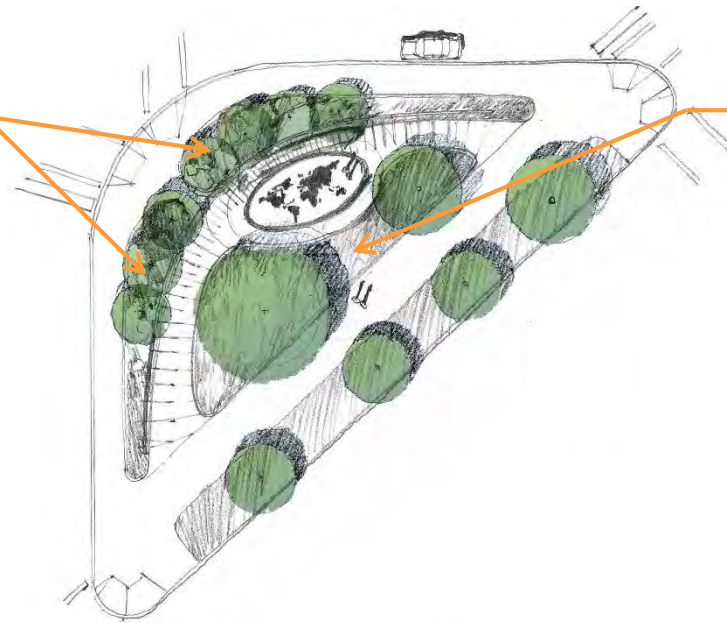
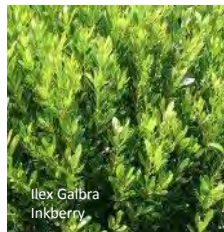
GINKGO



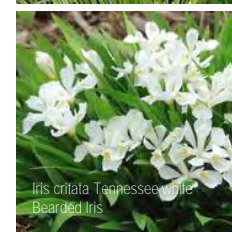
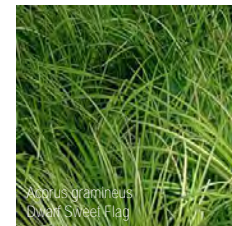
AMERICAN ELM

PLANTING STRATEGY-SHADE TREES

PLANTING: 18" - 36"

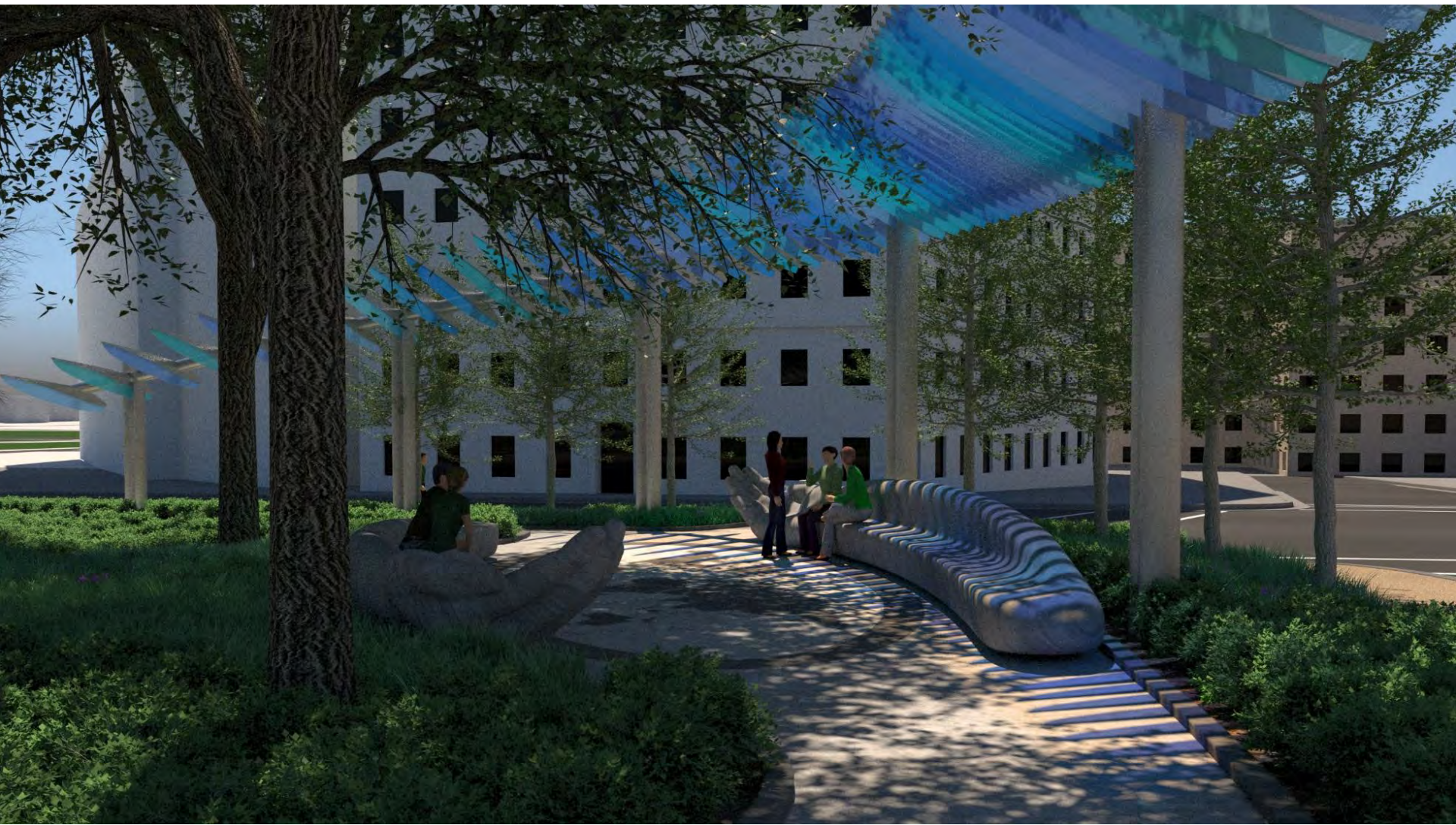


PLANTING: 9" - 18"



PLANTING STRATEGY-GROUNDCOVER



























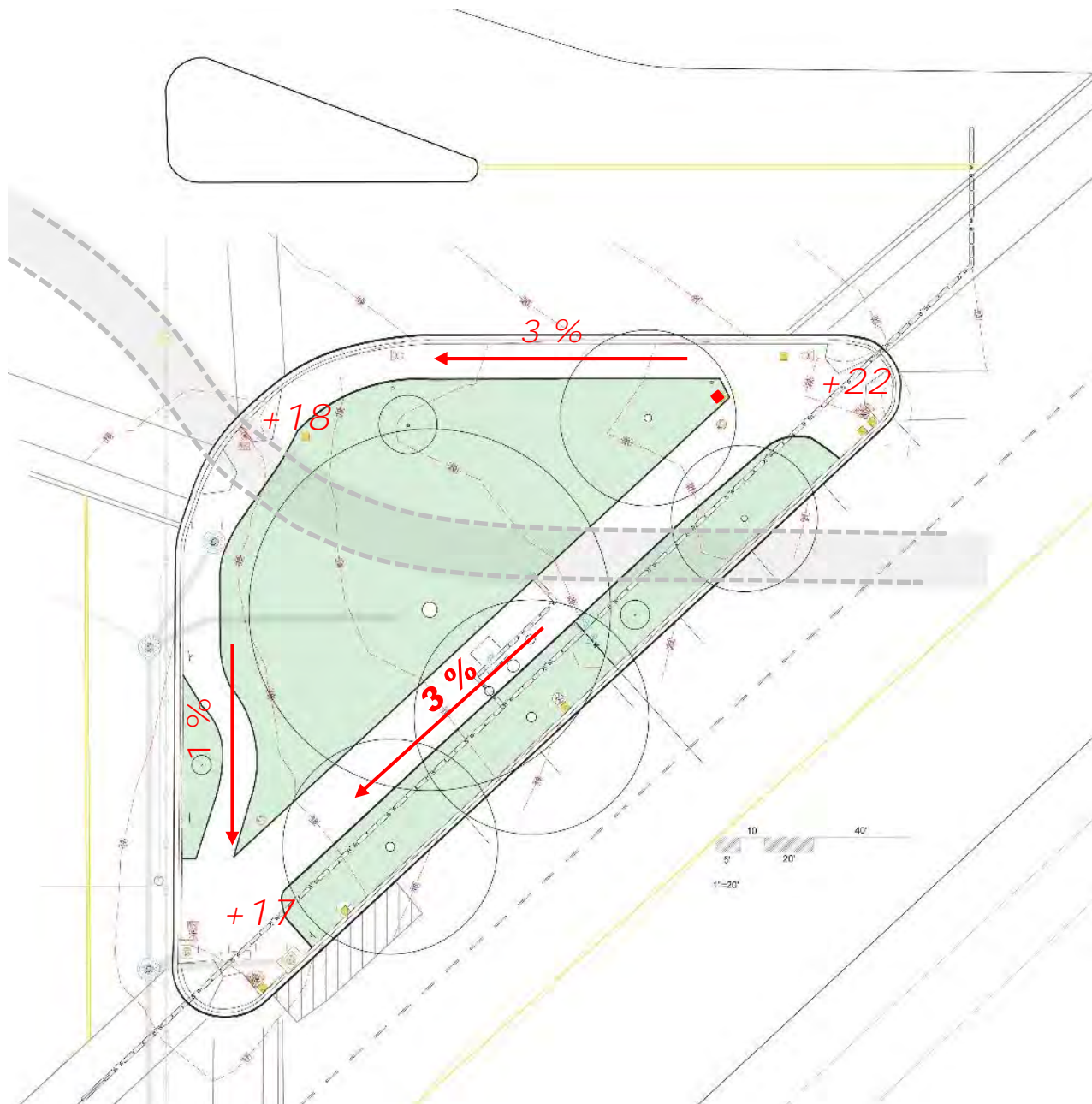








APPENDIX



SITE GRADING

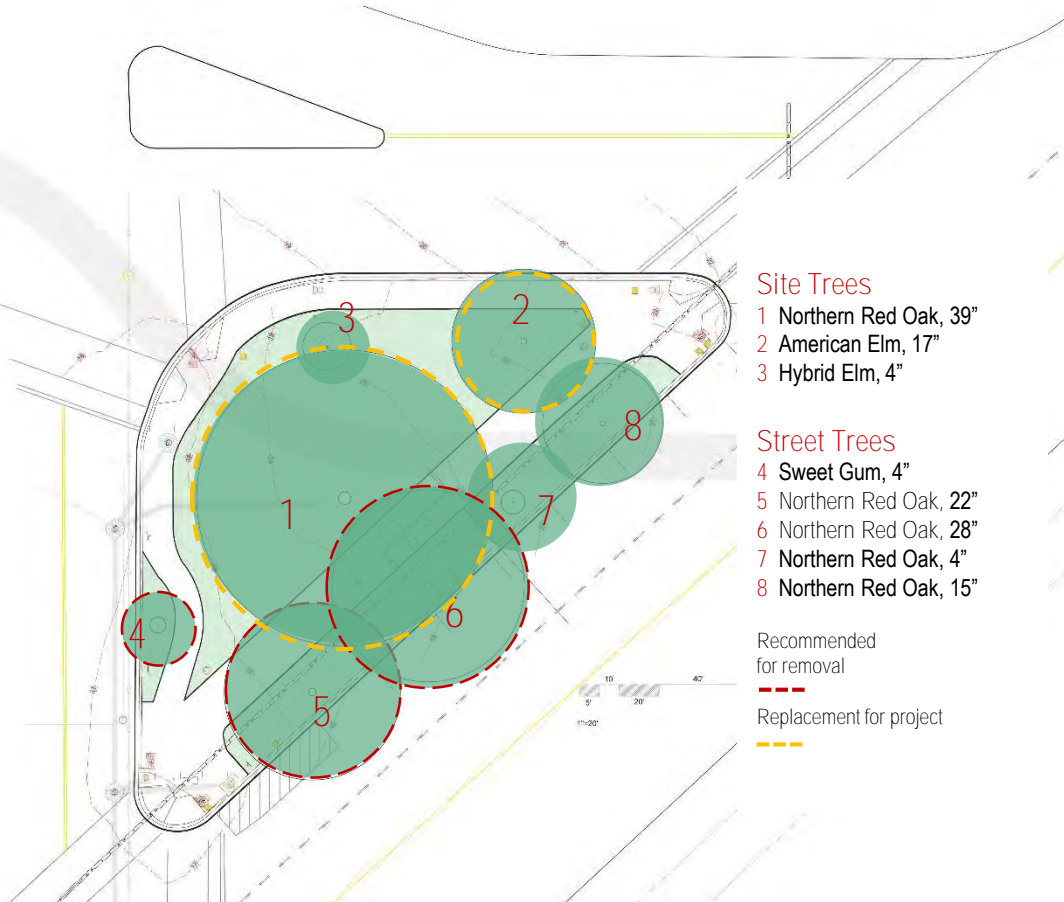
Site Grades.

High point, north corner

EXISTING SITE TREES

Tree Reports found:

- Five trees in *Fair to Good* condition
- Three are recommended for *removal*
- Northern Red Oak (1) is in decline and will not survive with or without disturbance
- American Elm (2) is without a central leader and has unusual growth habit
- Hybrid Elm (3) can be transplanted on the site
- Proposed design will replace Northern Red Oak (1) and the American Elm (2)



EXISTING TREES



1 Northern Red Oak, 39"

- Fair to good condition
- 60-75 years old
- Post Mature
- Trunk cavity
- Terminal decline likely, with or without disturbance



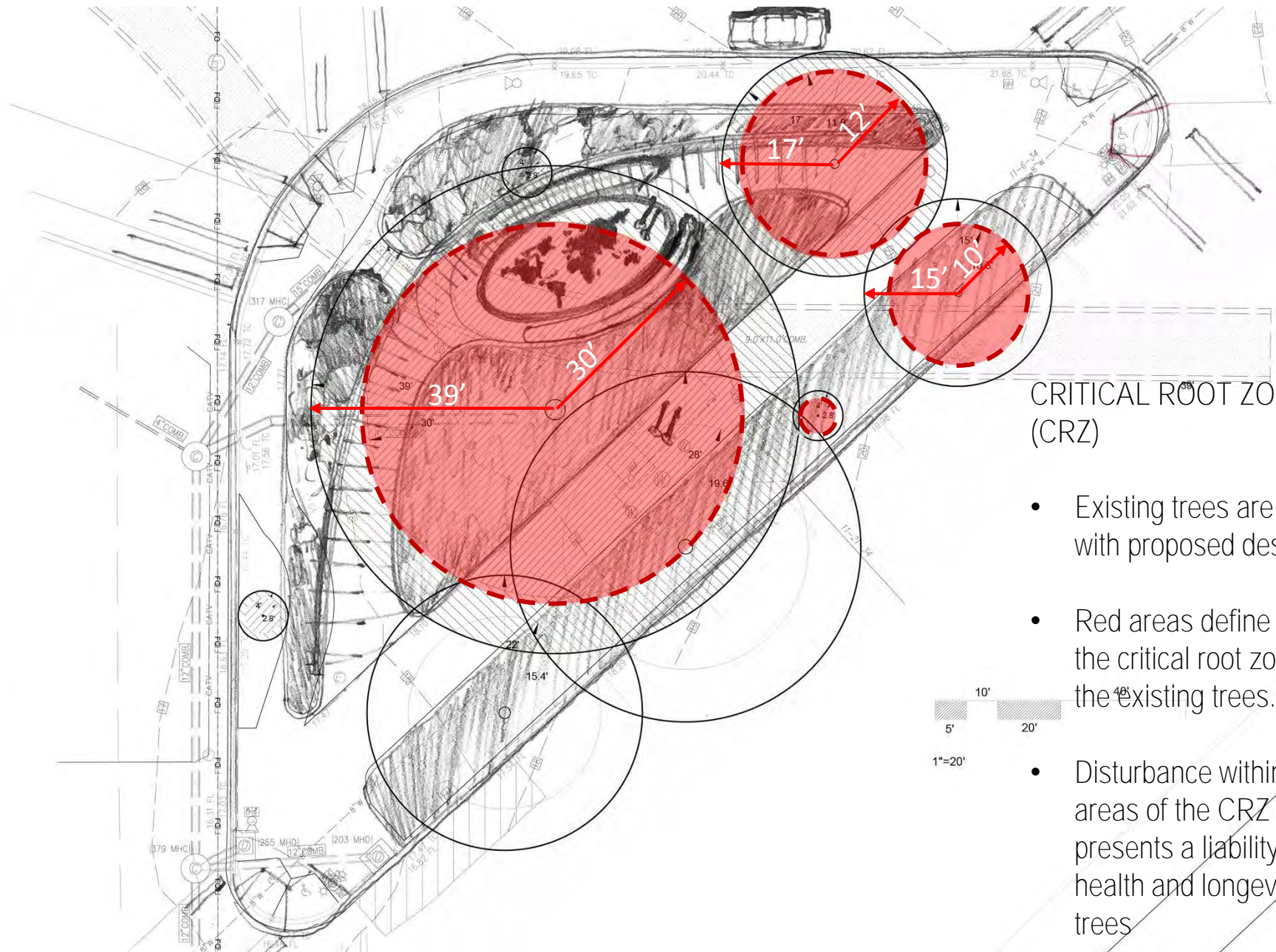
2 American Elm, 17"

- Fair to good condition
- 20-25 years old
- Unusual growth habit
- Low branching canopy (6' to



3 Hybrid Elm, 4"

- Good condition
- 8 years old
- Easily moved



CRITICAL ROOT ZONES (CRZ)

- Existing trees are shown with proposed design.
- Red areas define 60% of the critical root zones of the existing trees.
- Disturbance within the red areas of the CRZ presents a liability for health and longevity of the trees

