



Parkland Rehabilitation Design

U.S. Commission of Fine Arts Presentation

October 20, 2022



Agenda

Project Context

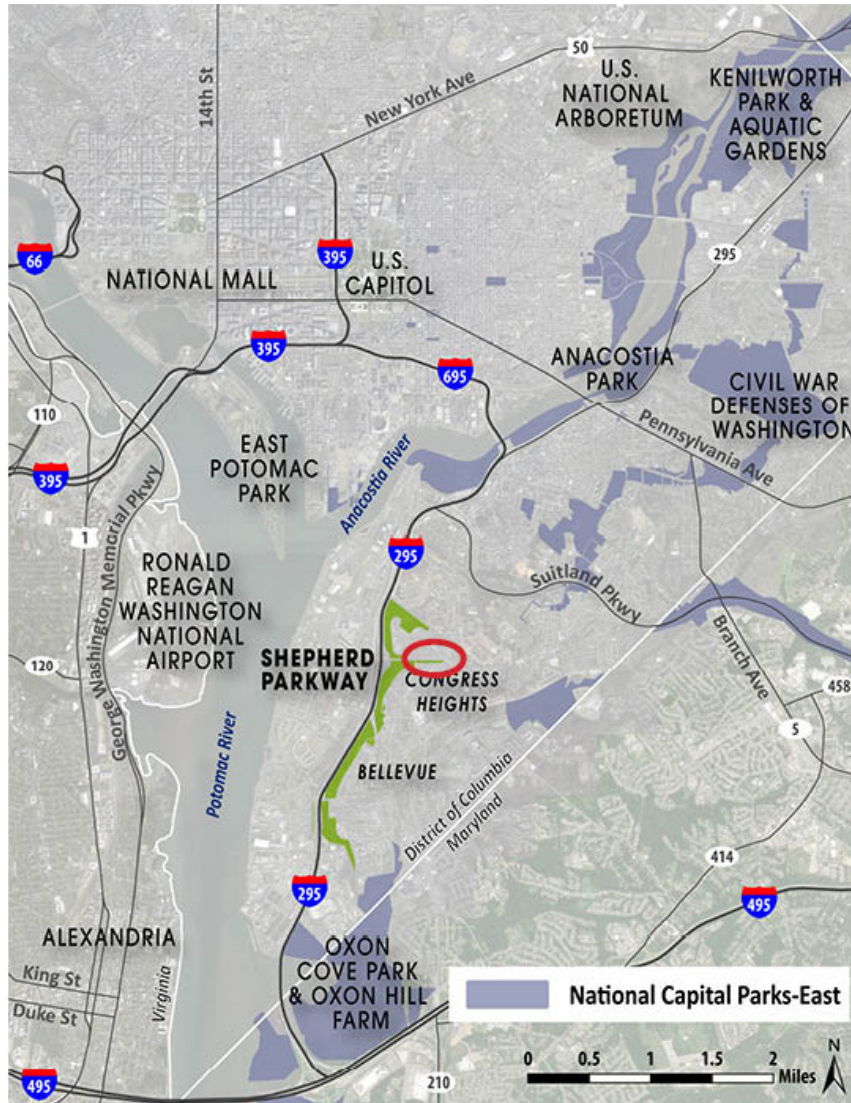
Existing Conditions

Design Concepts

Next Steps



Project Context: Shepherd Parkway



Shepherd Parkway Area Context Map



Regional Context Map



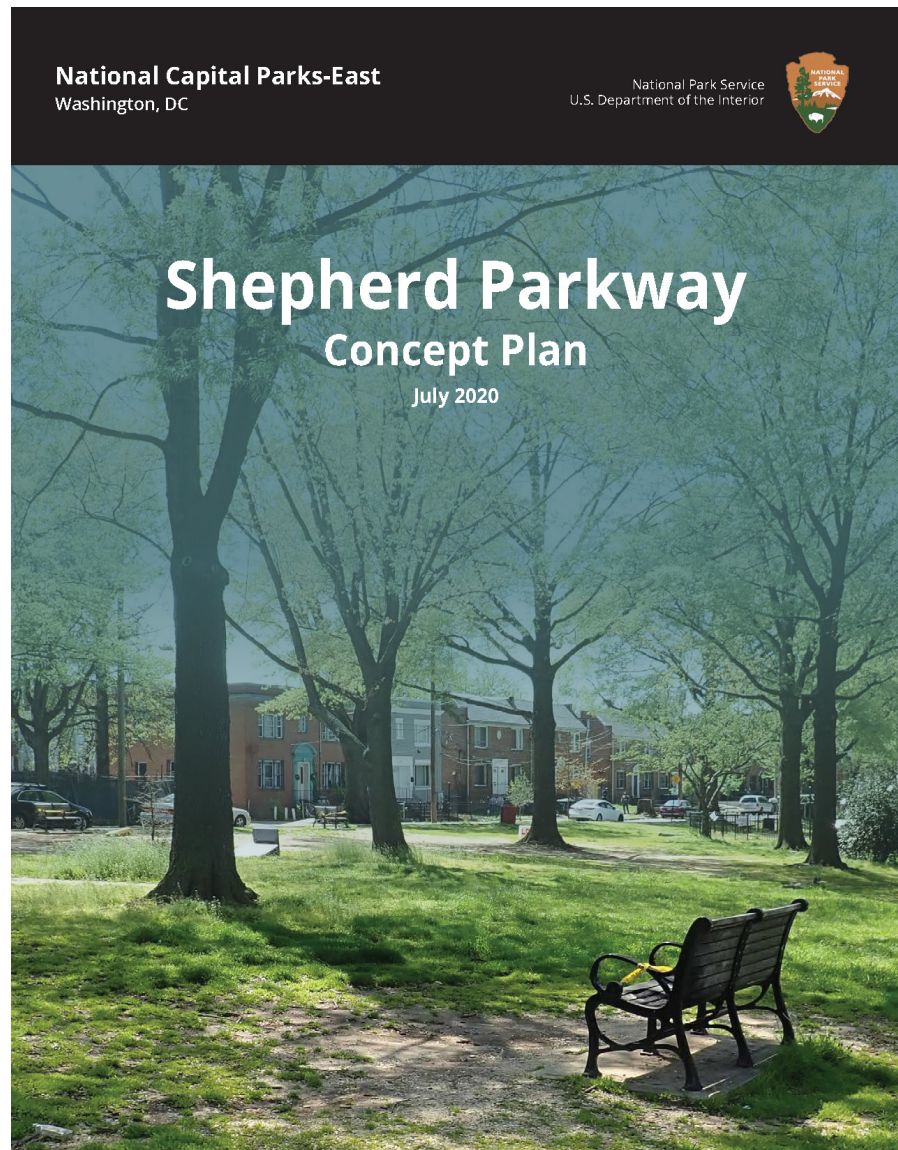
Project Area: Parkland Section of Shepherd Parkway





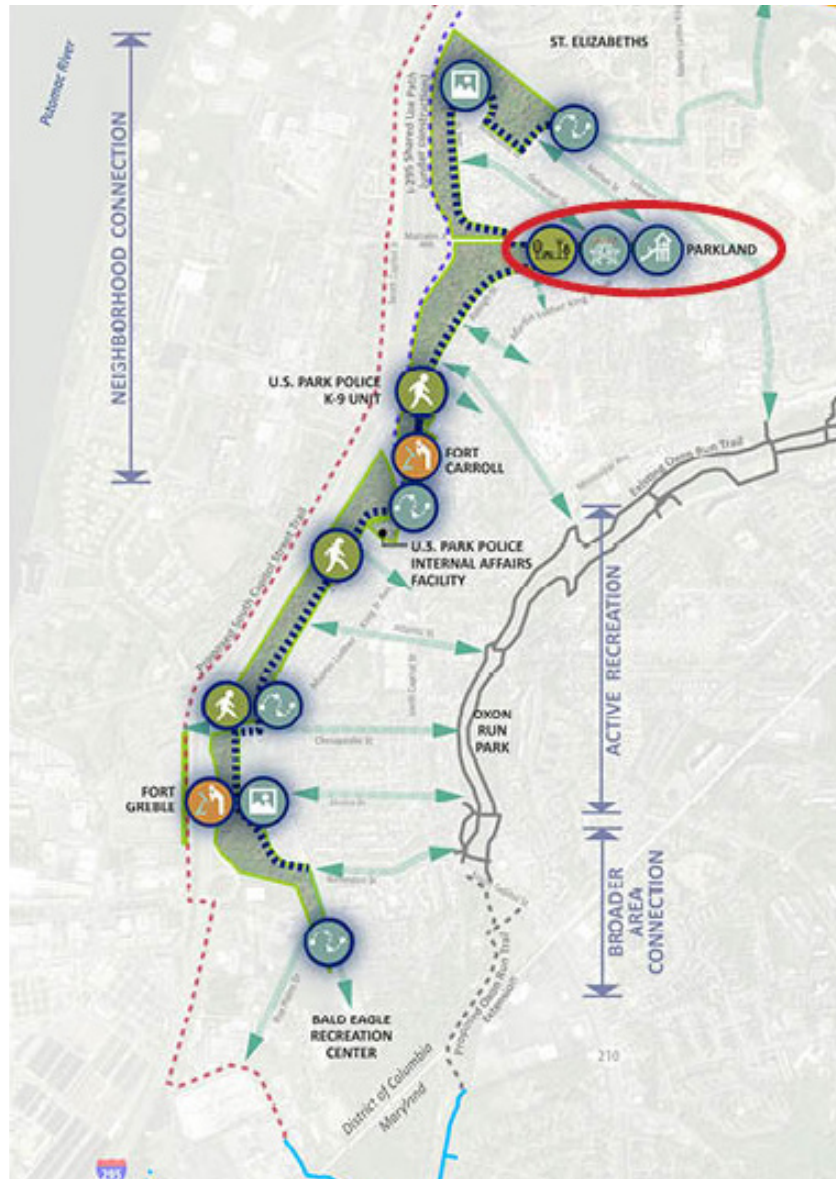
Shepherd Parkway Development Concept Plan

- NPS developed the Shepherd Parkway Development Concept Plan (DCP) in 2020
- NPS conducted 2 public meetings and public comment periods for the DCP
- Rapid Ethnographic Assessment Procedure (REAP) also informed the DCP
- DCP provided 2 overall concepts for Shepherd Parkway and 2 specifically for Parkland
- Parkland is the first project of the DCP for implementation





Shepherd Parkway Development Concept Plan



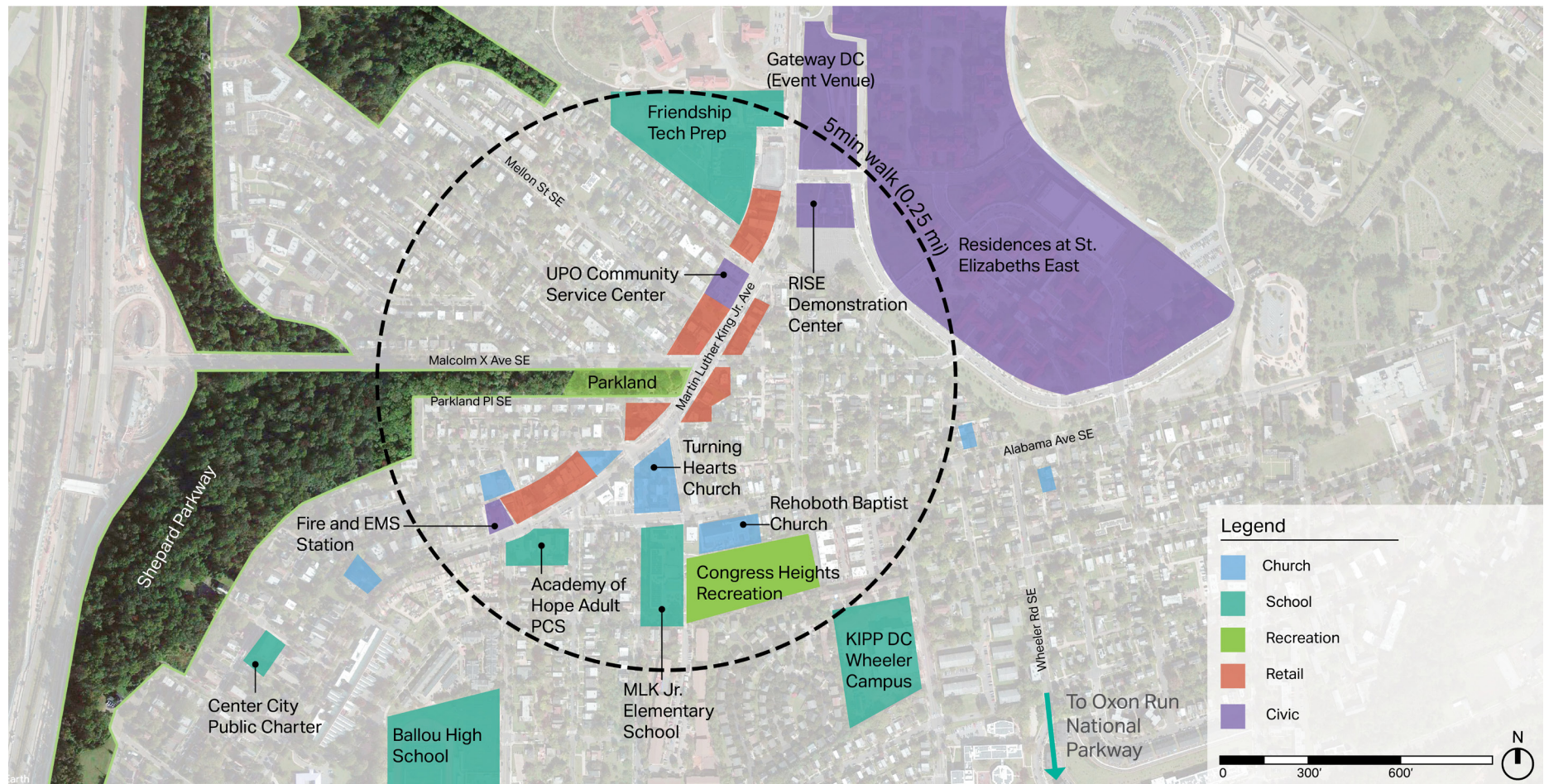
- Shepherd Parkway
- Existing Sullyland Parkway Trail
- Existing Oxon Run Trail
- Existing Oxon Cove Multi-Use Biker Trail
- - - Proposed Oxon Run Trail Extension (source: Oxon Run Trail Rehabilitation Concept Plan, DDOF, 2010)
- - - Proposed Oxon Cove Multi-Use Biker Trail Extension (source: Oxon Cove Multi-use Biker Trail, NPS, 2016)
- - - I-295 Shared-Use Path (under construction; exact alignment to be confirmed; source: I-295/Malcolm X Avenue Interchange Improvement Project NCPC Final Design Submission, GSA, 2016)
- - - Proposed South Capitol Street Trail (exact alignment to be confirmed; source: South Capitol Street Trail fact sheet, DDOF)

Proposed Key Activity Nodes and Connections

- Trail
- Flexible Open Green Space
- Picnic / Family Gathering
- Interpretive Signage and Treatments
- Trail Connector to Existing/Future Trails
- Playground
- Flexible Open Space for Events
- Overlook / Filtered View
- Connections to Local Trails and Destinations

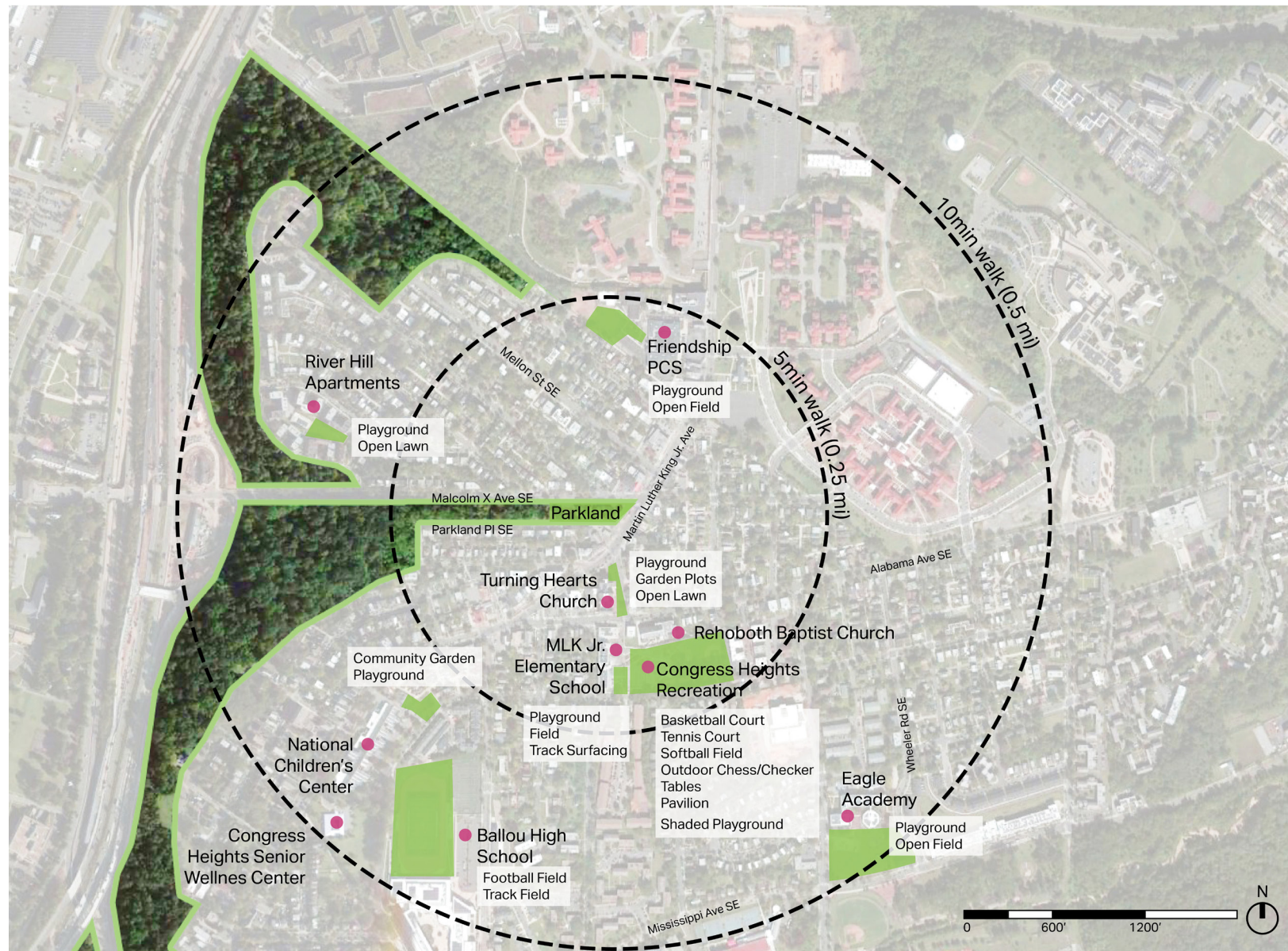


Nearby Land Uses





Nearby Recreation Amenities



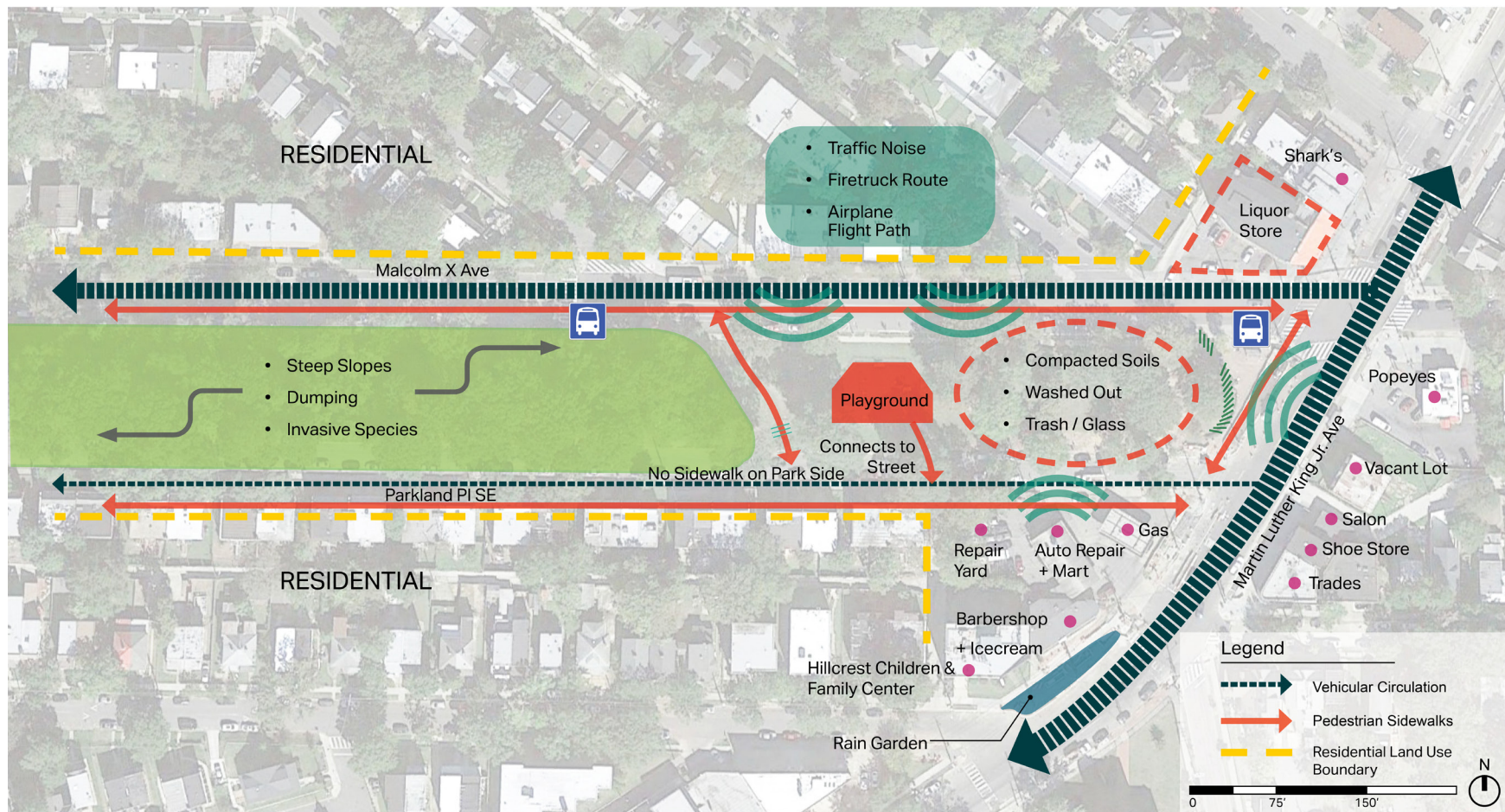


Area of Potential Effect





Site Analysis





Site Photos: Northeast



Looking north along Martin Luther King Jr. Avenue, the Parkland site has a busy intersection with a high volume of vehicular traffic and no shade at the plaza.



Looking west along Malcolm X Avenue, adult uses discourage youth from using the park. Despite being prohibited, alcohol use occurs in the park.



Site Photos: Southeast



Looking northwest from Martin Luther King Jr. Avenue, significant portions of the site show signs of soil compaction and erosion.



Looking west along Parkland Place, the site has exposed tree roots and lacks groundcover.



Site Photos: Southwest



Looking northwest from Parkland Place, the playground is surrounded by fencing.



Looking east along Malcolm X Avenue, the playground is raised from street level.



Site Photos: Northwest



The playground includes a swingset.



The playground has a lack of accessible play features.



Site Photos: West



Looking northwest from Parkland Place, the western edge of the project site is wooded and contains invasive plants.



Looking northwest, an unofficial pedestrian path is worn across the site.



Park Design Approach

The concepts attempt to incorporate the park's existing features in the design, including the following:

- Tree canopy
- Park benches
- Circulation paths
- Topography
- Playground area





Review of Concepts

Both concepts have the following features:

- Circulation throughout the park
- New, enlarged playground areas
- Flexible community gathering space
- Park signage
- Future trail connection to Shepherd Parkway
- Picnic areas, including individual tables and grouped tables with shade structure
- Site furniture including benches, trash receptables, bike rack, and lighting
- Education areas
- Permeable paving

Features not included:

- Community garden
- Off-leash dog park
- Spray park
- Sandbox
- Restrooms



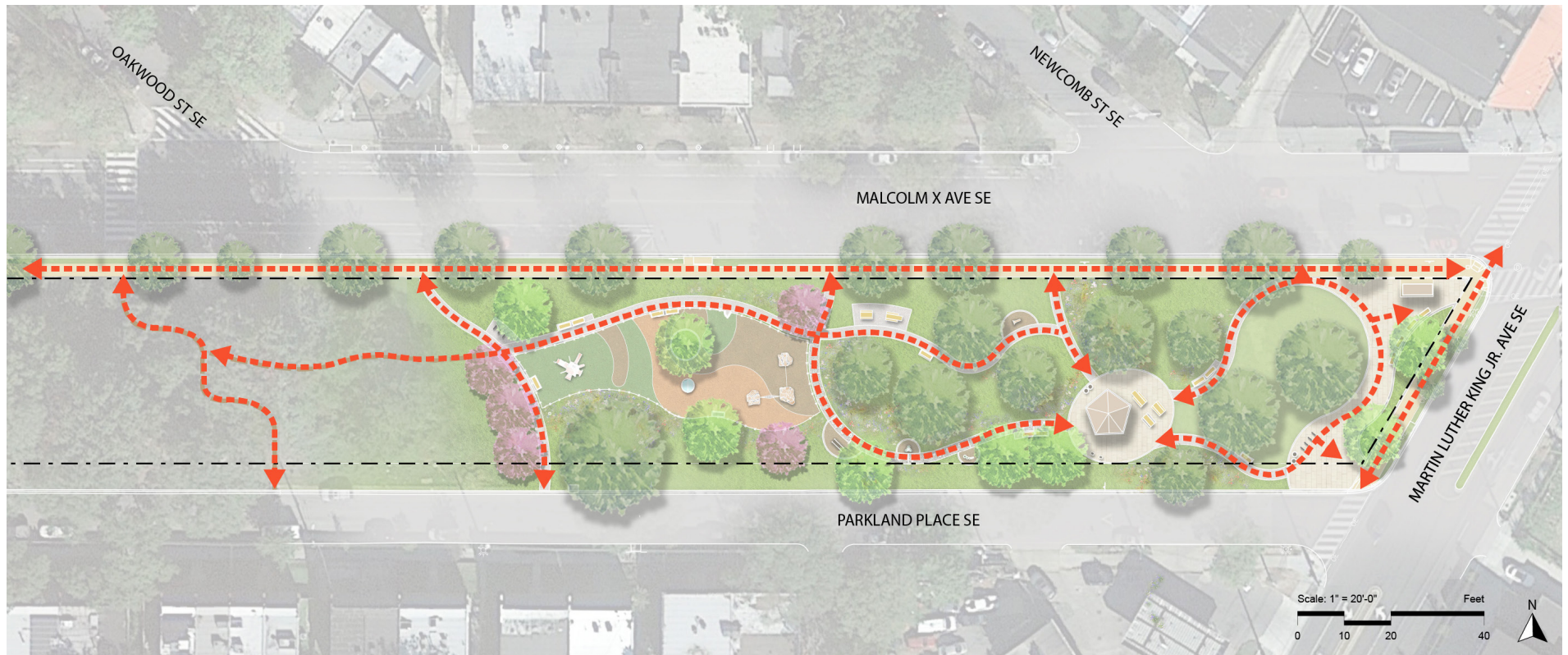
Concept A: Neighborhood National Park w/ Fitness Loop





Concept A: Neighborhood National Park w/ Fitness Loop

Site Circulation



--- PROPERTY LINE --- EXISTING TRAIL - - - CIRCULATION



Concept A: Neighborhood National Park w/ Fitness Loop

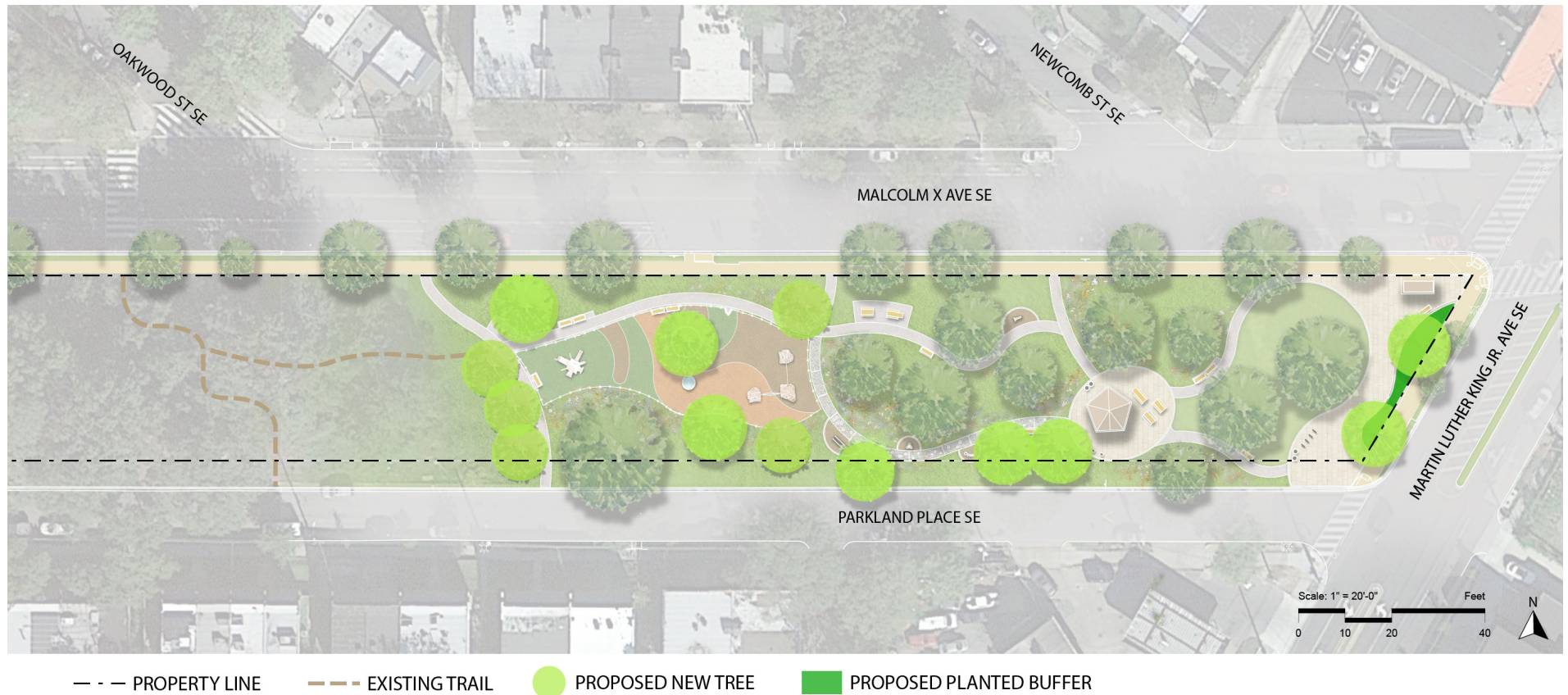
Existing Trees





Concept A: Neighborhood National Park w/ Fitness Loop

Proposed New Trees





Concept A: Neighborhood National Park w/ Fitness Loop

Proposed Activity Locations





Concept A: Neighborhood National Park w/ Fitness Loop Playground





Concept A: Neighborhood National Park w/ Fitness Loop

Picnic Area





Concept B: Neighborhood National Park w/ Playground & Nature Play





Concept B: Neighborhood National Park w/ Playground & Nature Play

Site Circulation





Concept B: Neighborhood National Park w/ Playground & Nature Play

Existing Trees





Concept B: Neighborhood National Park w/ Playground & Nature Play

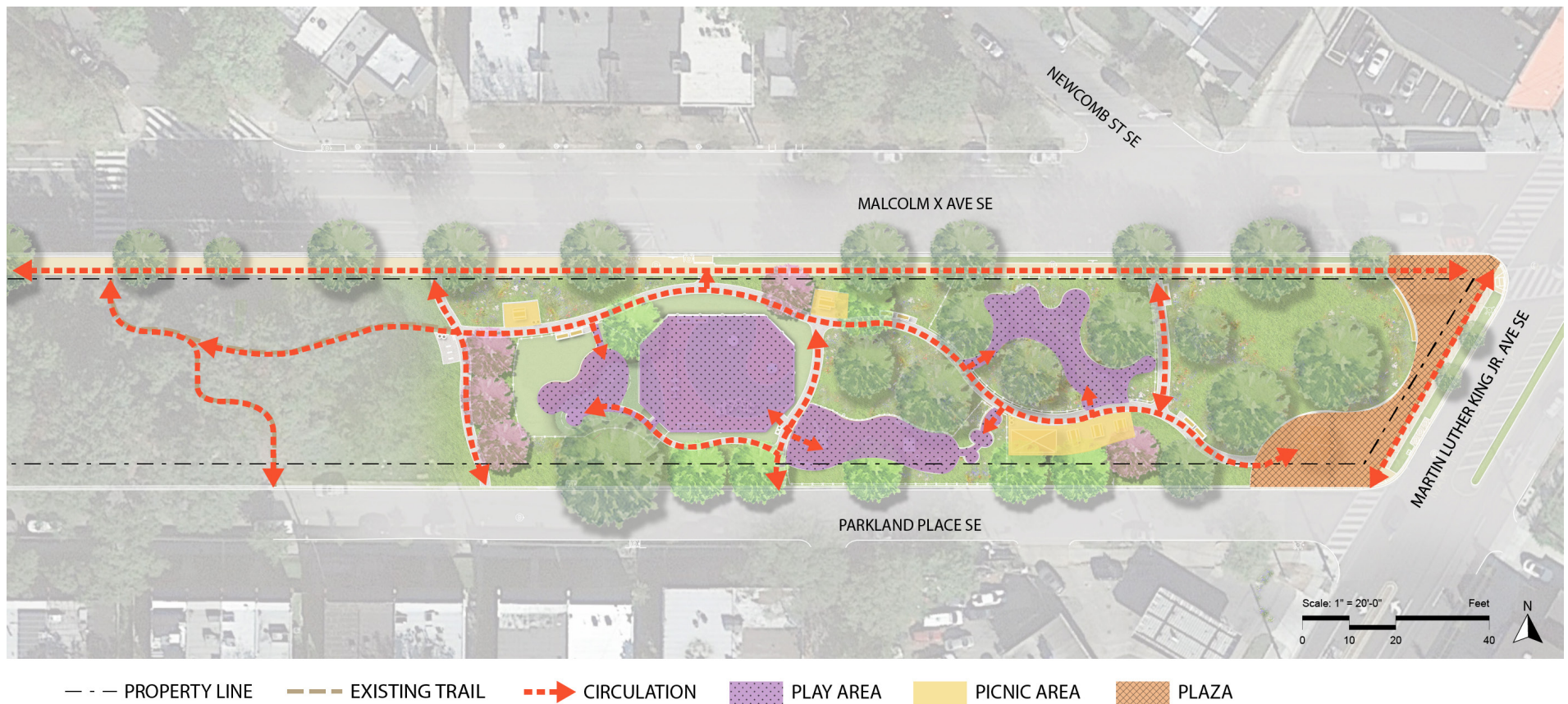
Proposed New Trees





Concept B: Neighborhood National Park w/ Playground & Nature Play

Proposed Activity Locations





Concept B: Neighborhood National Park w/ Playground & Nature Play

Picnic and Nature Play





Concept B: Neighborhood National Park w/ Playground & Nature Play

Play Area





Parkland Options A and B: Preliminary Site Details



BASIS-OF-DESIGN PRODUCT
MANUFACTURER / MODEL: VICTOR STANLEY, C-136 WITH CENTER ARMREST
MATERIALS: BLACK POWDER COATED DUCTILE IRON FRAME, WOOD SLATS
SIZE: 8' LENGTH
NOTE: REFURBISH FRAMES AND REPLACE SLATS OF EXISTING BENCHES.

1 BENCH

SCALE: NO SCALE

PIC1-PURB-BENCH.png



BASIS-OF-DESIGN PRODUCT
MANUFACTURER / MODEL: VICTOR STANLEY, HOMESTEAD 8T-A
MATERIALS: BLACK POWDER COATED TUBULAR STEEL FRAME, WOOD SLATS
SIZE: 8' LENGTH, WITH ADA ACCESSIBLE TABLETOP

2 PICNIC TABLE

SCALE: NO SCALE

PIC1-PURB-PICNIC.png



BASIS-OF-DESIGN PRODUCT
MANUFACTURER / MODEL: VICTOR STANLEY, IRONITE 8D-45
SIDE-DOOR WITH KEYPAD LOCK, DOME LID, PLASTIC LINER
MATERIALS: BLACK POWDER COATED RECYCLED SOLID STEEL BAR
SIZE: 45 GALLON

3 LITTER / RECYCLE RECEPTACLE

SCALE: NO SCALE

PIC1-PURB-LITTER.png



BASIS-OF-DESIGN PRODUCT
MANUFACTURER / MODEL: VICTOR STANLEY, CYCLE SENTRY BRWS-101
MATERIALS: BLACK POWDER COATED TUBULAR STEEL
MOUNTING / CAPACITY: IN-GROUND MOUNT, 2 BICYCLES

4 BICYCLE RACK

SCALE: NO SCALE

PIC1-PURB-BIKE.png



BASIS-OF-DESIGN PRODUCT
MANUFACTURER / MODEL: GAMETIME, PRIMETIME SWING 12583
WITH (2) BABY SEATS AND (2) BELT SEATS
AGE / CAPACITY: 2-5 AND 5-12 / 4 CHILDREN

5 SWINGS

SCALE: NO SCALE

PIC1-PLAY-SWING.png



BASIS-OF-DESIGN PRODUCT
MANUFACTURER / MODEL: PLAYWORLD, MOTION PLAY ACCESSIBLE WHIRL ZZX01158
AGE / CAPACITY: 2-12 YEARS, 8 CHILDREN (UP TO 2 WHEELCHAIRS)

6 ACCESSIBLE SPINNER

SCALE: NO SCALE

PIC1-PLAY-SPINNER.png



BASIS-OF-DESIGN PRODUCT
MANUFACTURER / MODEL: PLAYWORLD, TIMBER STACKS SALEM ZZX01104
MATERIALS: BLACK LOCUST WOOD
AGE / CAPACITY: 5-12 YEARS, 25 CHILDREN

7 LOG CLIMBER

SCALE: NO SCALE

PIC1-PLAY-LOG-CLIMBER.png



BASIS-OF-DESIGN PRODUCT
MANUFACTURER / MODEL: FREEDNOTES, HARMONY PARK TUNED DRUMS TD-40-N

BASIS-OF-DESIGN PRODUCT
MANUFACTURER / MODEL: LANDSCAPE STRUCTURES, EVOS CHATTER NOODLE TALK TUBES 156453
AGE / CAPACITY: 5-12, 2 CHILDREN

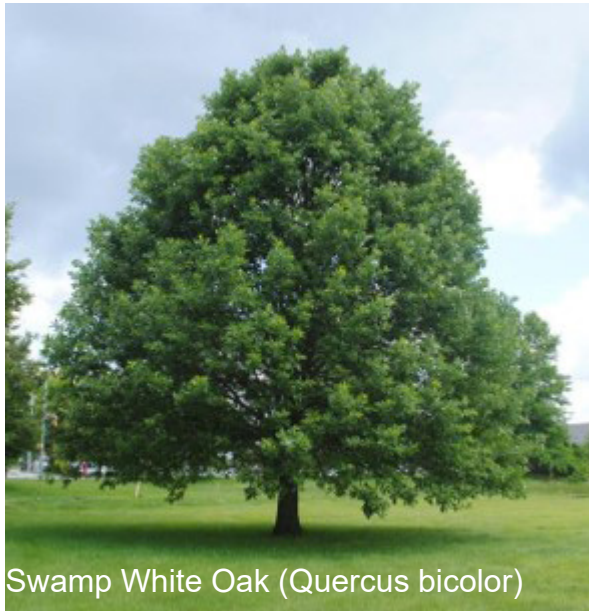
8 AUDITORY PLAY

SCALE: NO SCALE

PIC1-PLAY-AUDITORY.png



Suggested Native Plantings



Swamp White Oak (*Quercus bicolor*)



Red Maple (*Acer rubrum*)



American Hop-Hornbeam (*Ostrya virginiana*)



Rhododendron (*Rhododendron* "Nova Zembla")



Smooth Witherod (*Viburnum nudum*)



Sweet Pepperbush



Suggested Native Plantings



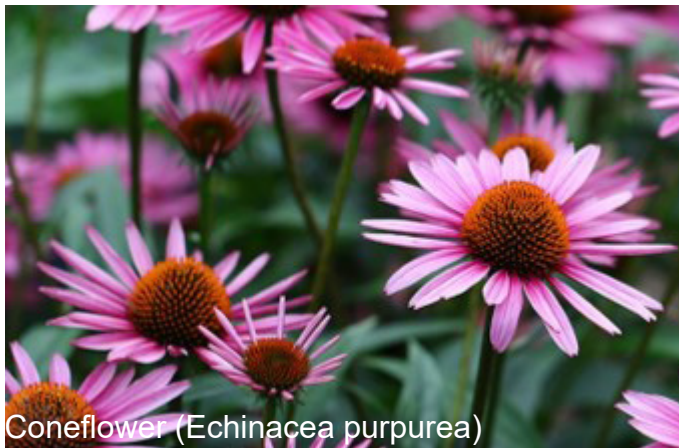
Hairy Alum Root (*Heuchera villosa*)



Grassland Sedge (*Carex divulsa*)



Blazing Star (*Liatris spicata*)



Coneflower (*Echinacea purpurea*)



White Turtlehead (*Chelone gabra*)



Blue False Indigo (*Baptisia australis*)



Comparing Concepts

Concept A: Neighborhood National Park w/ Fitness Loop



Concept B: Neighborhood National Park w/ Playground & Nature Play





Next Steps

The NPS will take the following next steps at the end of the public comment period:

- Receive and review public comments
- Add lighting to park concepts
- Refine design to incorporate comments
- Return to public with a single design concept