

National Park Service
U.S. Department of the Interior
National Mall and Memorial Parks



Volleyball Court Rehabilitation West Potomac Park



National Park Service U.S. Department of the Interior

National Mall and Memorial Parks

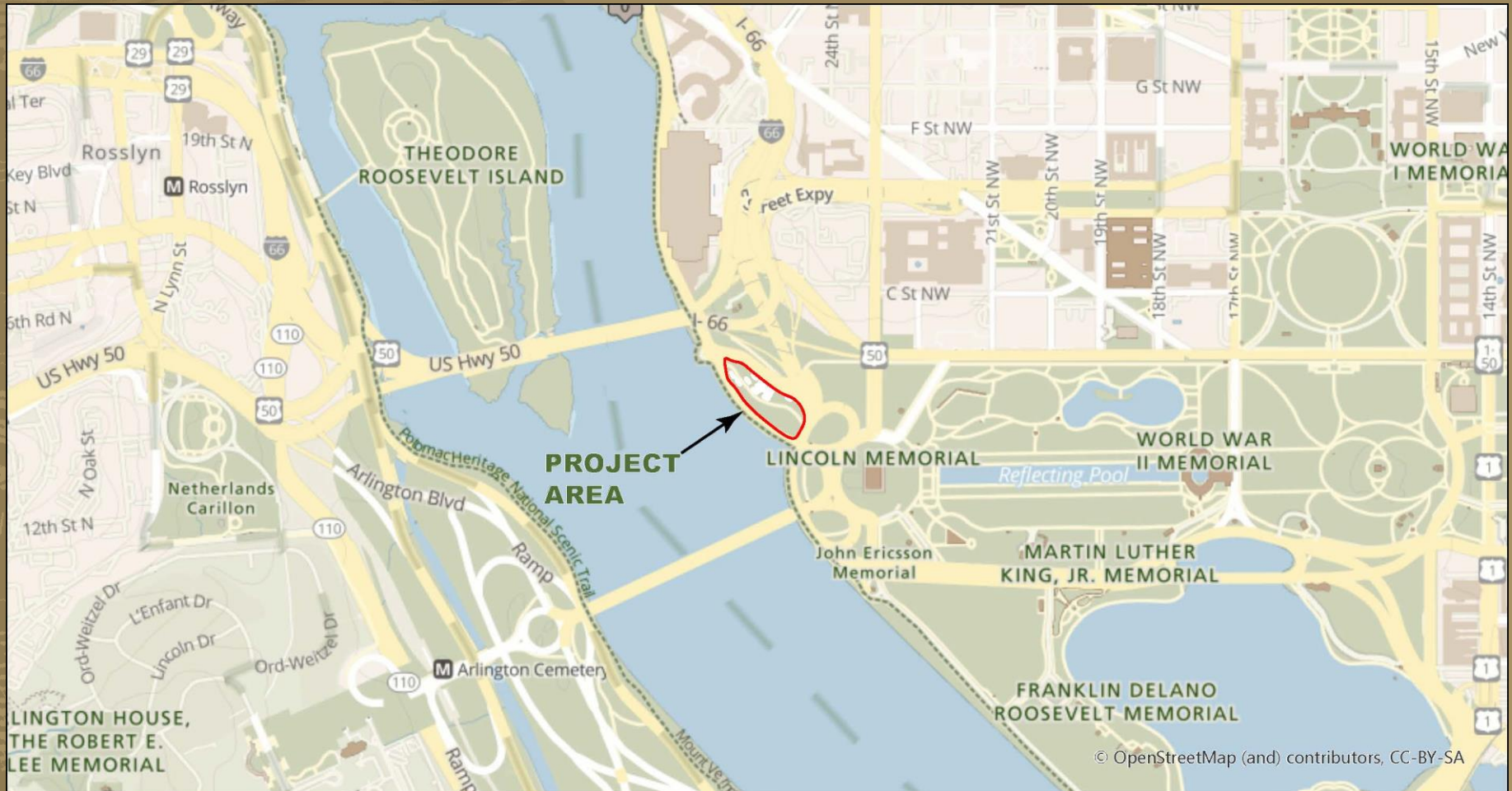


The National Mall and Memorial Park is proposing to rehabilitate the Lincoln Volleyball Courts located between Rock Creek and Potomac Parkway NW (to the north) and Potomac Parkway NW (to the south). The area of the volleyball courts is a 5.6 acre area consisting of lawn, trees, walkways, 11 (eleven) sand volleyball courts with one informational board, an area for a portable bathroom, a drinking fountain, 3 (three) wire trash cans as well as a hardscape access area for the storage area under the Pkwy Dr NW roadway. The volleyball courts in their current condition have poor drainage, rendering the courts unplayable in the spring and after rain events. The ground around the courts are also deteriorating and need attention.

The rehabilitation includes: removing, regrading and reinstalling the 11 (eleven) sand volleyball courts to provide for adequate drainage, while being mindful of storm water and maintenance best management practices, removal and replacement of some vegetation including turf, shrubs and trees, removal and replacement of chain-link fence on north side of grounds, milling and overlaying with asphalt a portion of the existing walkway, installing a foot washing station, installing a concrete foundation for a portable toilet, upgrading existing drinking fountain to include a bottle filling station and possibly removing or replacing trash cans. The total area of disturbance is 1.86 acres.

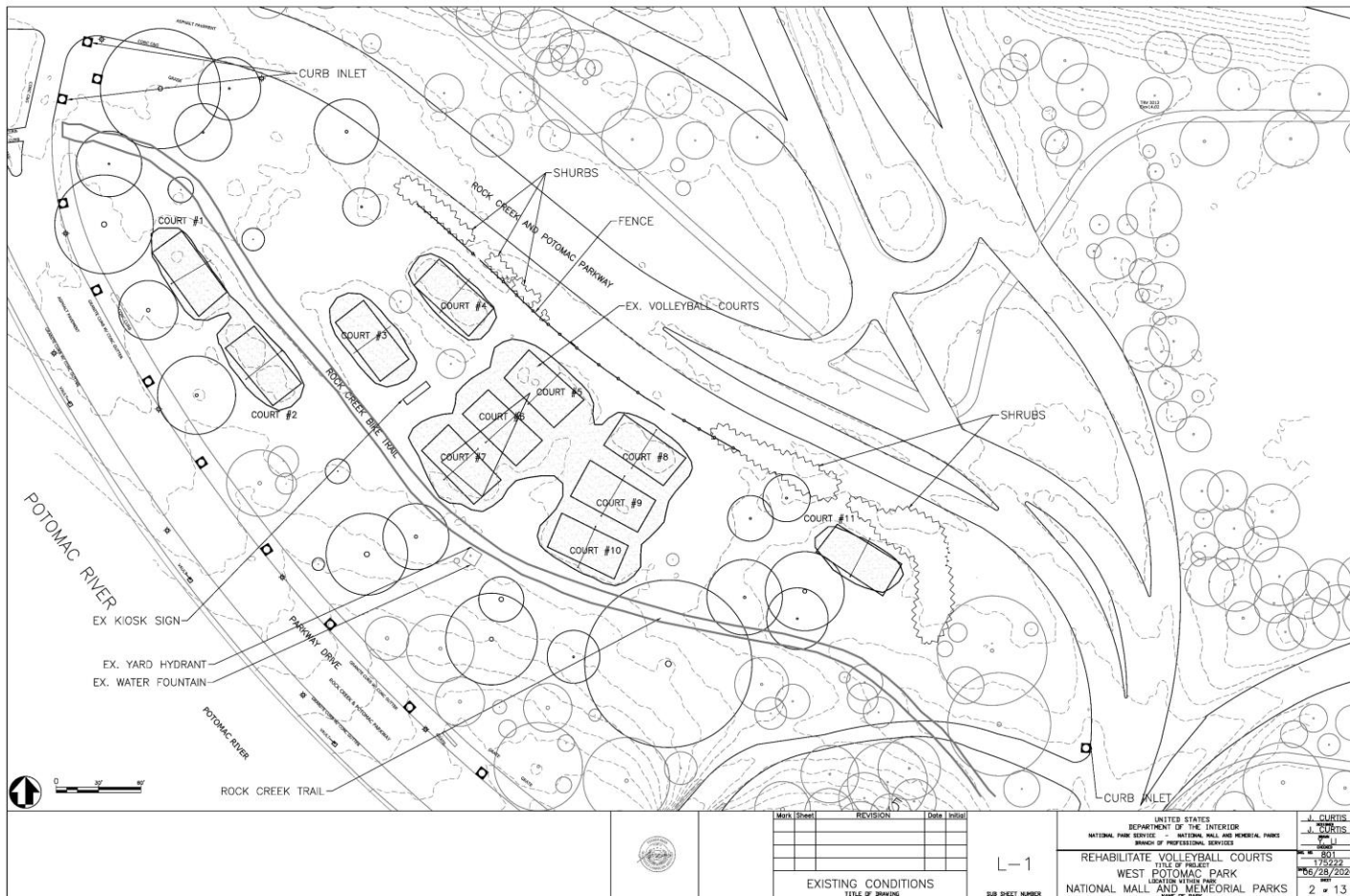
Construction will include the installation of a staging area, tree and turf protection, erosion and sediment control measures as well as rerouting the through walkway. The walkway will be rerouted over what is currently turf/lawn, the temporary walkway will be 6' wide recycled asphalt mills over filter fabric. The temporary walkway as well as the rest of the construction area will be restored at the end of construction.

National Park Service
U.S. Department of the Interior
National Mall and Memorial Parks
Vicinity Map



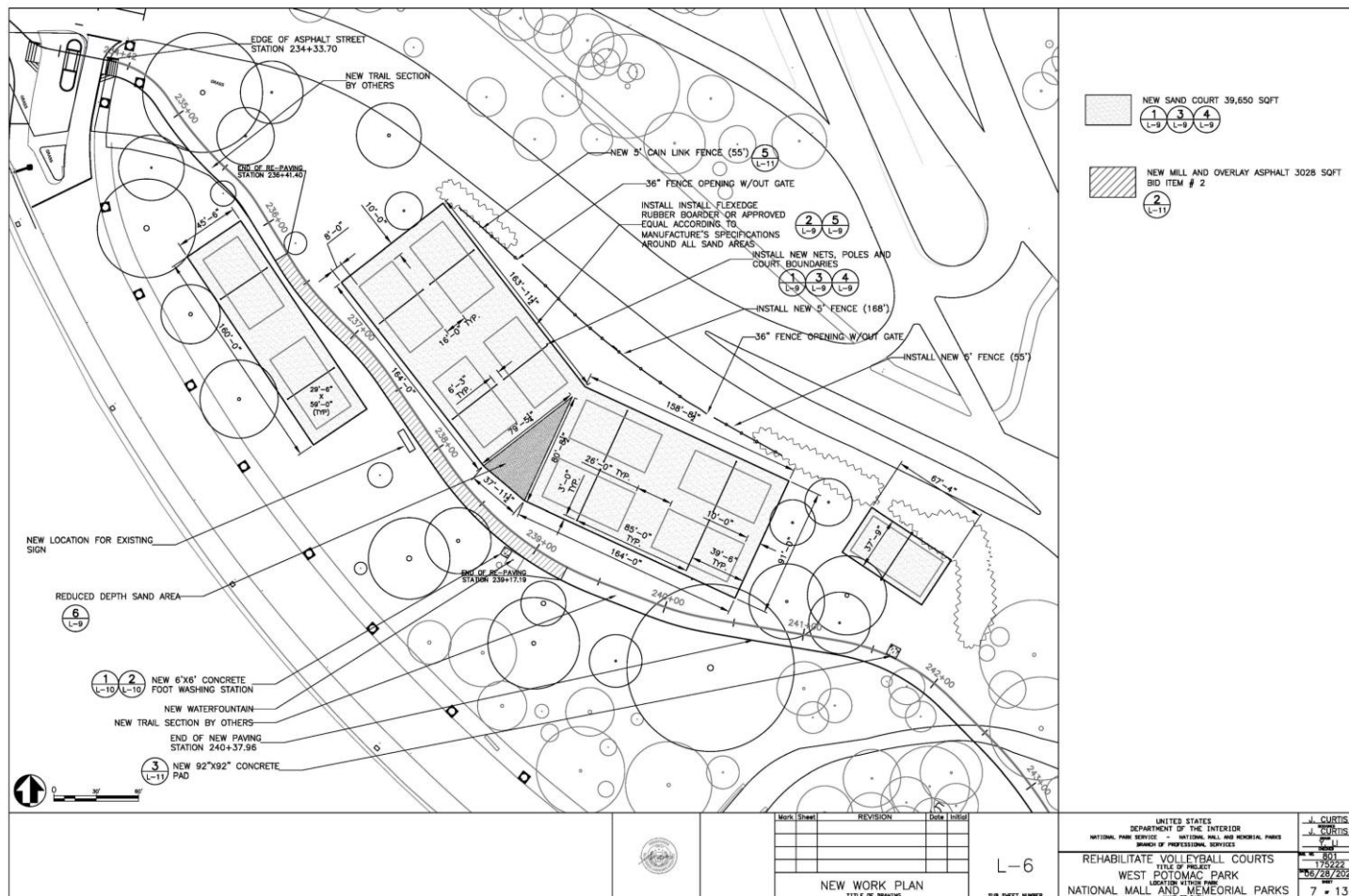
National Park Service U.S. Department of the Interior

National Mall and Memorial Parks Existing Plan

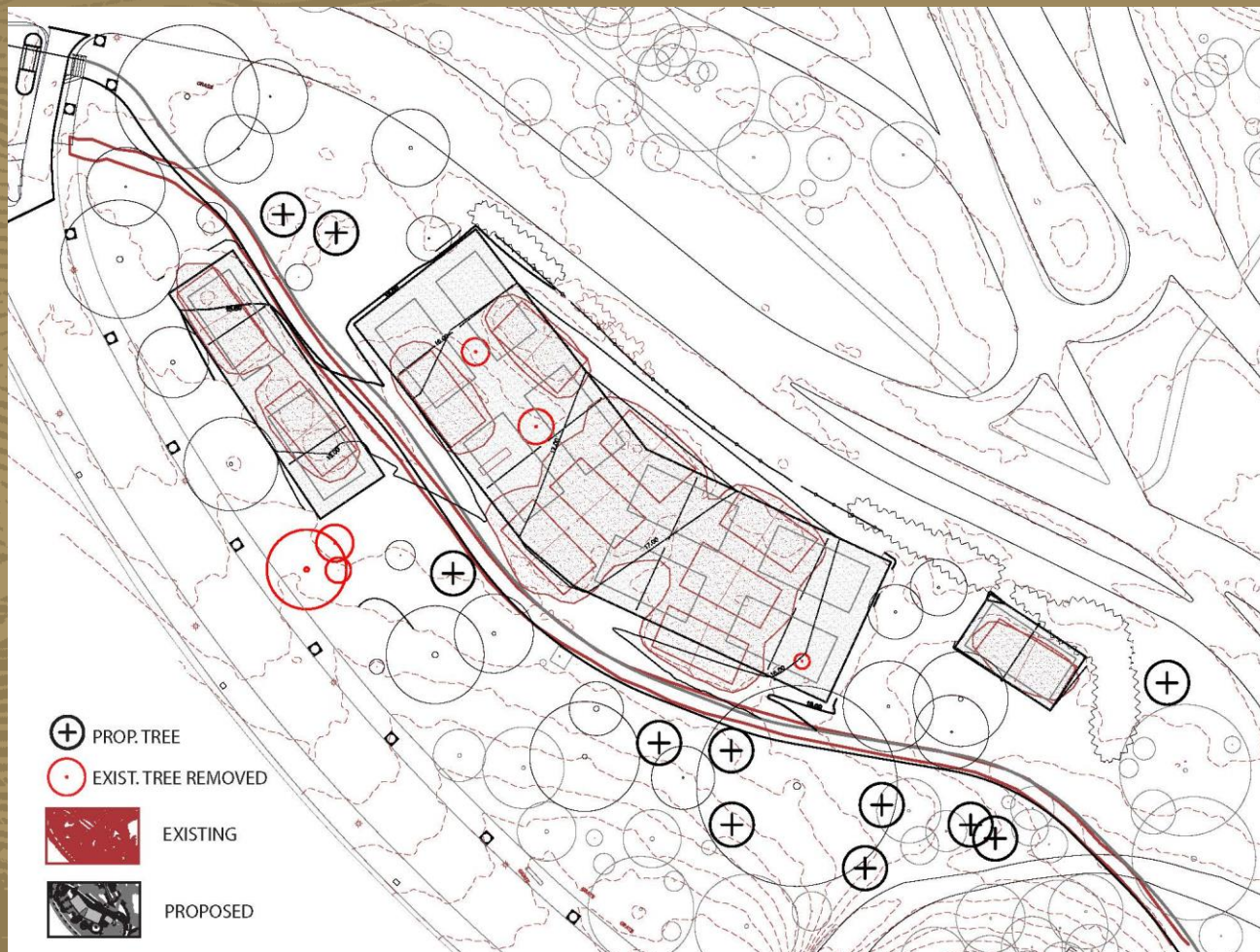


National Park Service U.S. Department of the Interior

National Mall and Memorial Parks New Proposed Plan



National Park Service
U.S. Department of the Interior
National Mall and Memorial Parks
New Proposed Plan overlaid on Existing

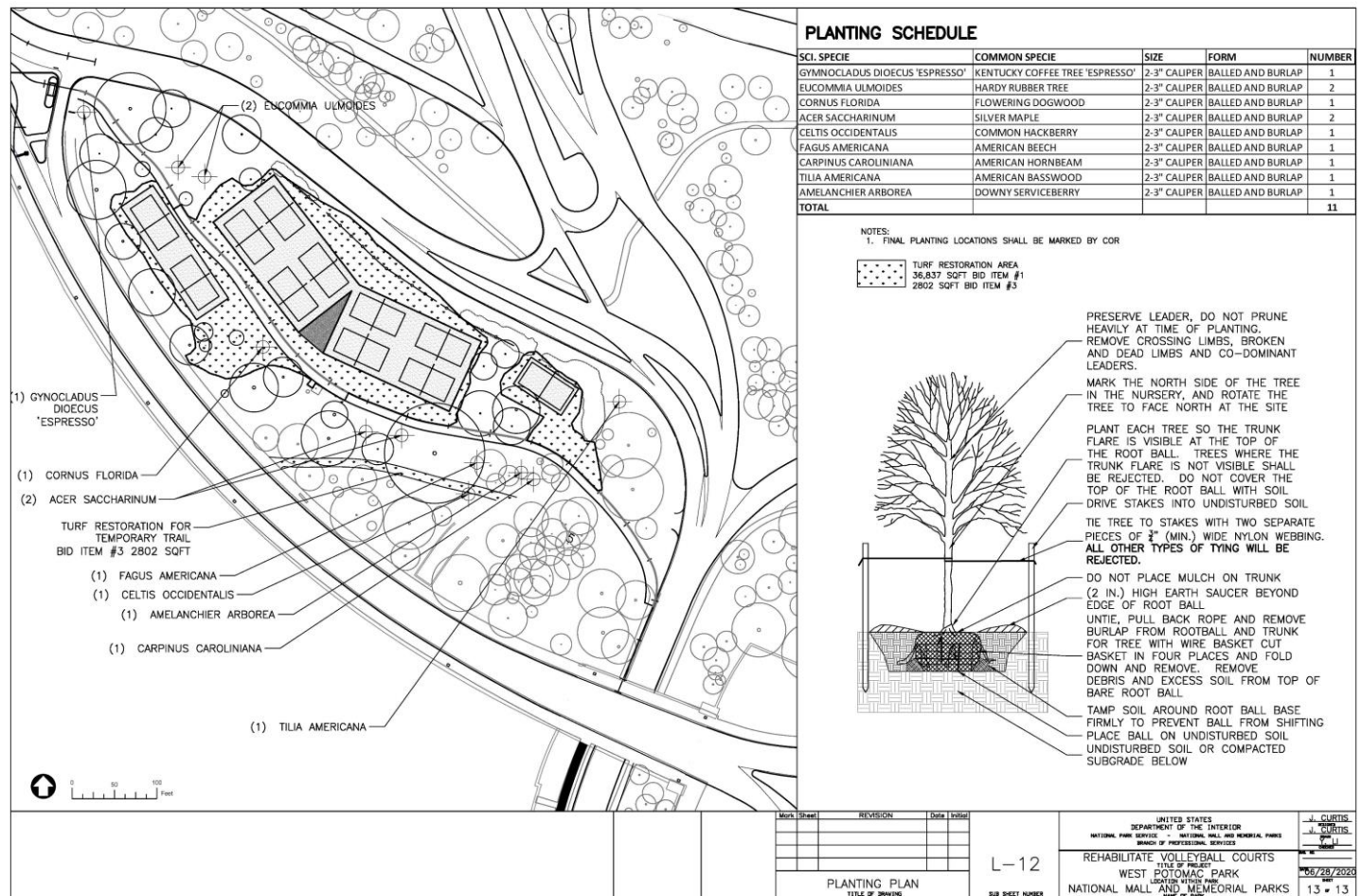


National Park Service
U.S. Department of the Interior

National Mall and Memorial Parks
Fence Comparison



National Mall and Memorial Parks Planting Plan



National Park Service
U.S. Department of the Interior

National Mall and Memorial Parks
Views from Rock Creek Parkway



National Park Service
U.S. Department of the Interior

National Mall and Memorial Parks
View from Lincoln Memorial

