



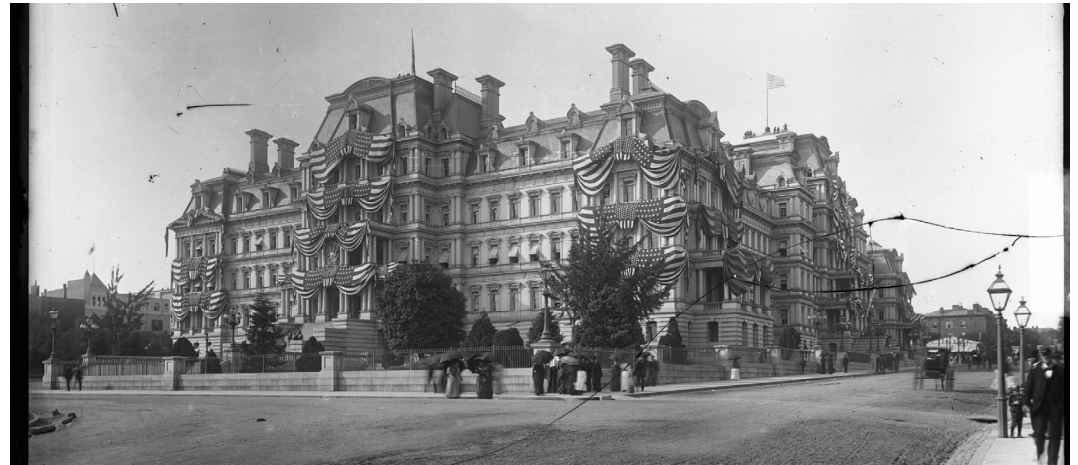
EXECUTIVE OFFICE OF THE PRESIDENT  
OFFICE OF ADMINISTRATION  
WASHINGTON, D.C. 20503

# Exterior Improvements to the Eisenhower Executive Office Building

EXECUTIVE OFFICE OF THE PRESIDENT  
OFFICE OF ADMINISTRATION

# BUILDING HISTORY

FROM ITS COMPLETION, THE EISENHOWER EXECUTIVE OFFICE BUILDING'S (EEOB) HIGHLY ORNATE DESIGN HAS GENERATED CRITICISM, WITH SOME OBSERVERS VIEWING IT AS INCOMPATIBLE WITH THE SURROUNDING NEOCLASSICAL FEDERAL ARCHITECTURE (QUINN EVANS ARCHITECTS, 1993). SUBSEQUENTLY, SEVERAL PROPOSALS WERE DEVELOPED TO EITHER SIGNIFICANTLY MODIFY THE BUILDING'S EXTERIOR OR DEMOLISH IT ENTIRELY, INCLUDING PLANS TO REPLACE ITS SECOND EMPIRE FEATURES WITH A NEOCLASSICAL FAÇADE SIMILAR TO THAT OF THE NEIGHBORING TREASURY BUILDING, WHICH HAD BEEN CONSTRUCTED FROM 1836 TO 1869 (BLOCH, 1957; NATIONAL PARKS SERVICE, 2024). INDEED, IN 1955, THE PRESIDENT'S ADVISORY COMMISSION ON PRESIDENTIAL OFFICE SPACE RECOMMENDED DEMOLISHING THE BUILDING IN FAVOR OF A NEW STRUCTURE THAT WOULD BE MORE IN KEEPING WITH THE CHARACTER OF THE WHITE HOUSE. (H. DOC. NO. 85-211). HOWEVER, THE SCALE AND COST OF SUCH MODIFICATIONS ULTIMATELY PREVENTED THEIR IMPLEMENTATION. THE EEOB WAS LATER DESIGNATED A NATIONAL HISTORIC LANDMARK IN 1969 (DEFERRARI, 2014), AND LISTED ON THE NATIONAL REGISTER OF HISTORIC PLACES (NRHP) AND THE DISTRICT OF COLUMBIA INVENTORY OF HISTORIC SITES IN 1972. THE EEOB IS ALSO A CONTRIBUTING RESOURCE TO THE LAFAYETTE SQUARE NATIONAL HISTORIC LANDMARK DISTRICT (NHLD).

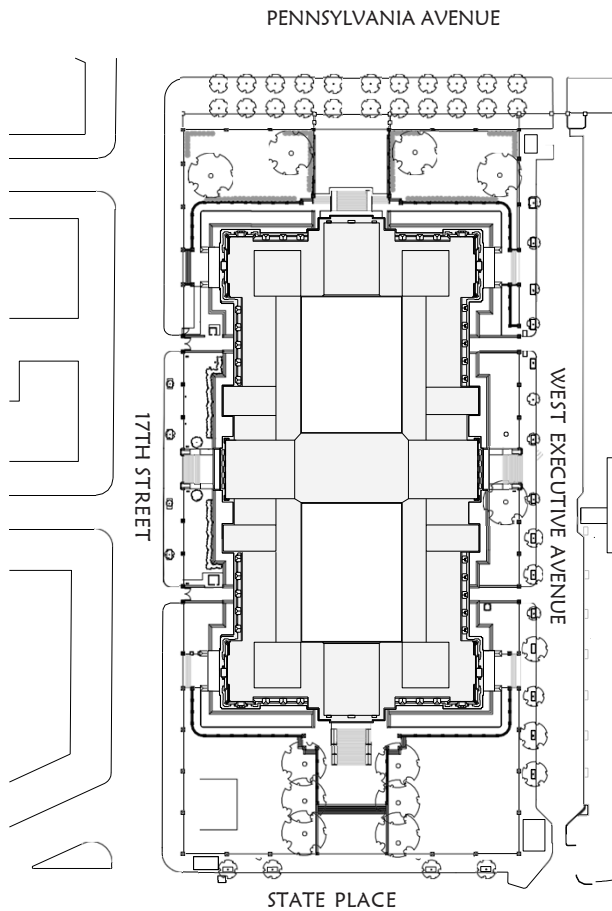


State, War & Navy Building decorated with flags, from south, in the 1890's - LC-BH836- 151



Elevation Drawing for the South Front of the State, War and Navy Building - NAID 6861826

# EXISTING STRUCTURE & CONDITIONS



THE EEOB HAS BEEN LARGELY NEGLECTED SINCE ITS CONSTRUCTION IN THE LATE 1800'S. MINOR EXTERIOR FAÇADE MAINTENANCE WAS CONDUCTED IN THE 1960'S AND THEN AGAIN IN THE EARLY 2000'S. THERE HAVE BEEN NO OTHER NOTABLE EXTERIOR REPAIRS OR RESTORATION COMPLETED ON THE EEOB.

THE COLOR, DESIGN, AND MASSING OF THE EXISTING STRUCTURE DOES NOT ALIGN VISUALLY WITH THE SURROUNDING ARCHITECTURE AND LACKS ANY SYMBOLIC COHESION WITH THE WHITE HOUSE.

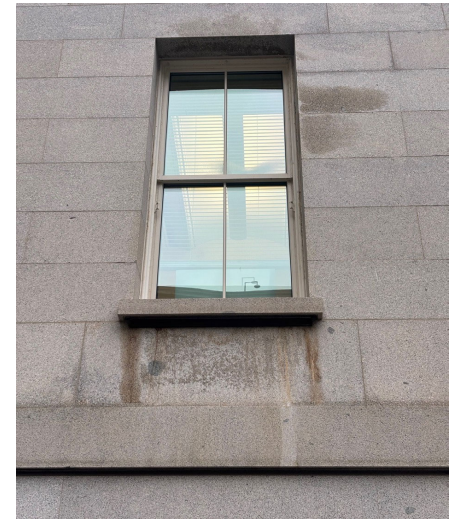
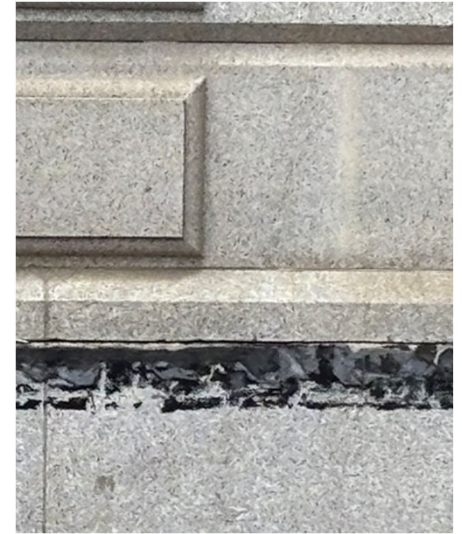


## EXISTING STRUCTURE & CONDITIONS, CONT'D

CONDITIONS OF THE EEOB INCLUDE GRIME, SOOT AND STAINING WHICH HAS IMPACTED THE NATURAL STONE AND DULLED THE GRANITE.

THE EEOB ALSO HAS ABRASIONS, CRACKS AND DEEP LINES FROM YEARS OF POOR OR NON-EXISTENT EXTERIOR MAINTENANCE, AND GENERAL DISREGARD.

THE BENEFIT TO PAINTING THE STONE IS THAT IT IS REPEATABLE. THE INABILITY TO BRING THE STONE FACADE BACK TO A BASELINE COLOR HAS PLAGUED THE MAINTENANCE OF THE EEOB IN THE PAST, AND WILL CONTINUE TO PLAGUE IT IF NOT ADDRESSED.



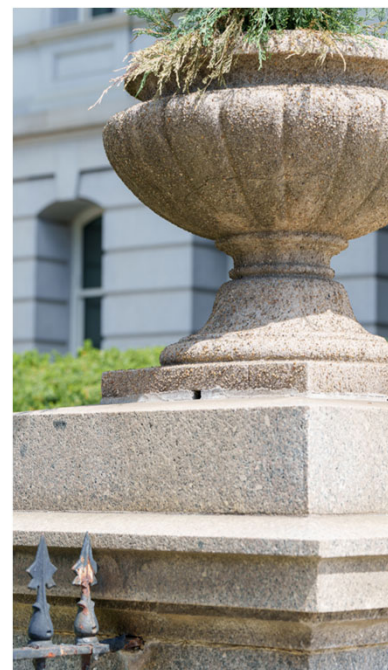
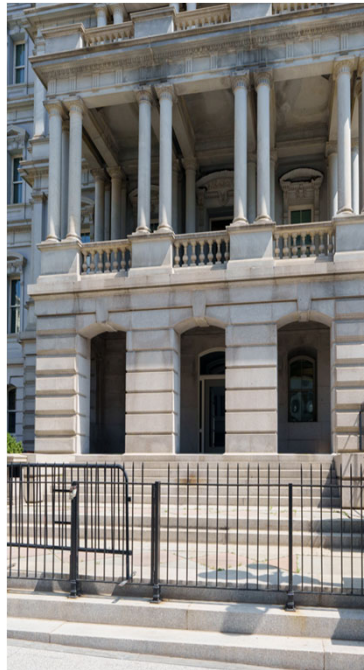
## EXISTING STRUCTURE & CONDITIONS, CONT'D

WHEN STONE MASONS HAVE ASSESSED THE ABILITY TO CLEAN THE FAÇADE, THEY OFTEN STATE THERE IS NO GUARANTEE HOW MUCH BROWN AND STAINING CAN BE REMOVED FROM THE STONE.

THEY ALSO STATE IT IS UNCLEAR HOW MANY PASSES, CLEANER, AND WATER WILL BE REQUIRED.

THIS INABILITY TO DETERMINE, BOTH THE FINANCIAL COMMITMENT AND ULTIMATE QUALITY OF RESULTING WORK, WILL LEAD TO FURTHER NEGLECT OF THE BUILDING'S FAÇADE.

ADDITIONALLY, REPAIRING CRACKED AND BROKEN STONE IS ALMOST ALWAYS INFEASIBLE SINCE THE STONES ARE INTEGRATED TOGETHER IN THE MASONRY WALL AND SUCH REPAIRS INEVITABLY DAMAGE SURROUNDING STONES AND METALS.

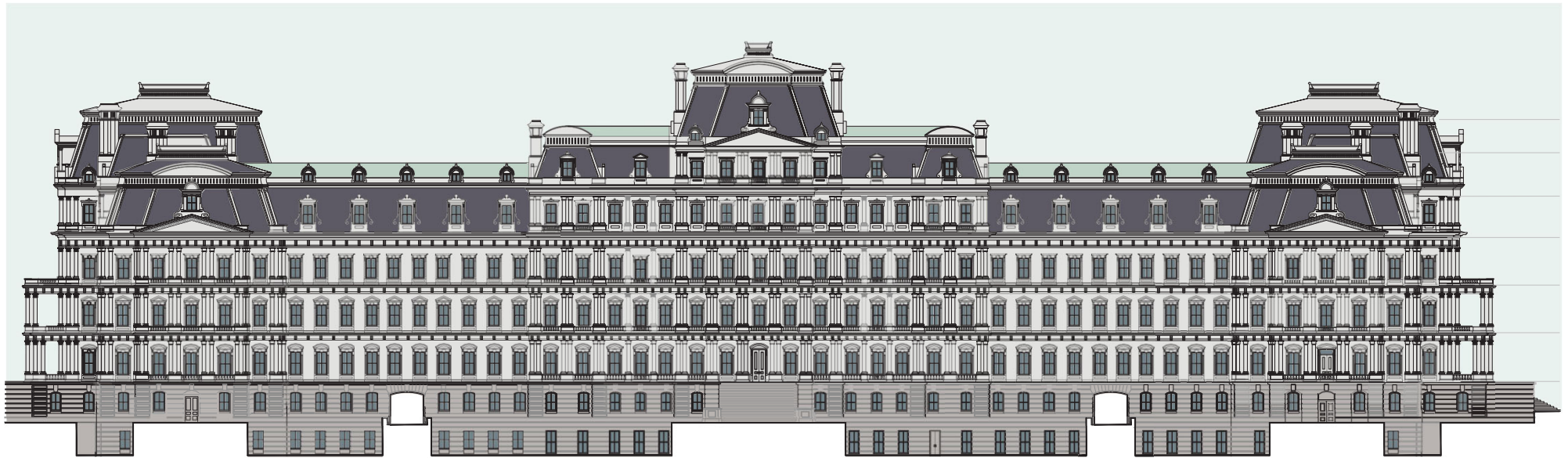


# EXISTING STRUCTURE RENDERING



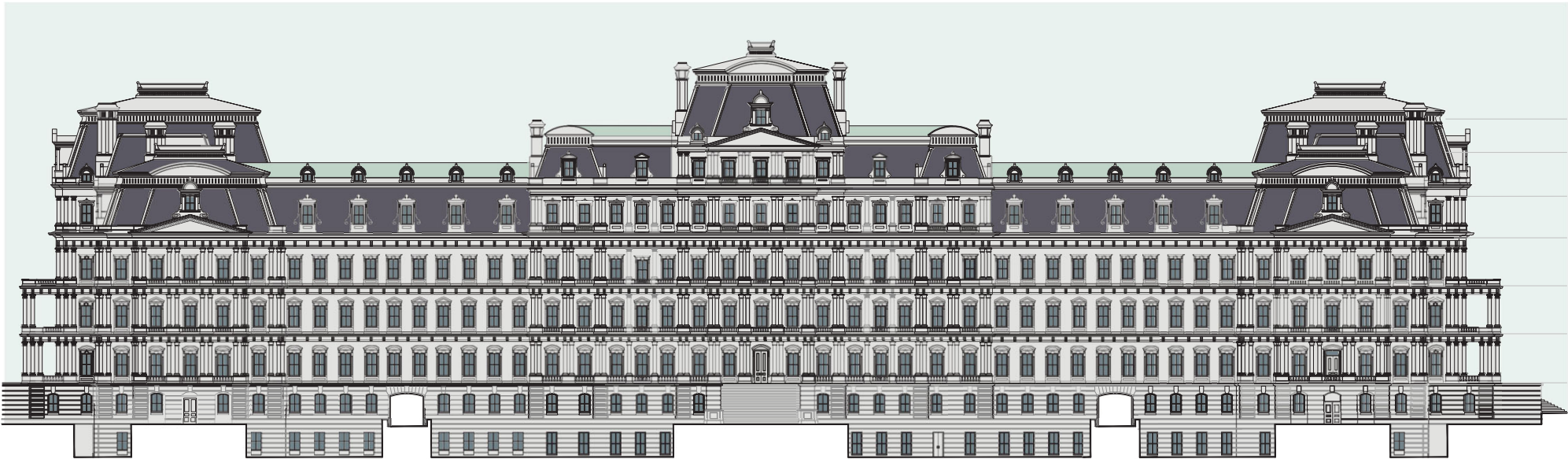
## PROPOSED PAINTING OPTION 1

THIS PAINT RENDERING PORTRAYS THE SUPERSTRUCTURE IN WHITE WHILE MAINTAINING THE GRANITE FAÇADE ON THE EXPOSED BASEMENT AND SUBBASEMENT.



# PROPOSED PAINTING OPTION 2

THIS PAINT RENDERING PORTRAYS THE SUPERSTRUCTURE AND BASEMENTS IN WHITE.



## PROPOSED PAINTING

IN THIS IMAGE WE ILLUSTRATE THE EEOB AS IT WOULD LOOK UPON COMPLETION WITH THE SUPERSTRUCTURE PAINTED WHITE, AND MAINTAINING THE EXISTING GRANITE FOR THE BASEMENT AND SUBBASEMENT.



## PROPOSED PAINTING CONT'D

IN THIS IMAGE WE ILLUSTRATE THE EEOB AS IT WOULD LOOK UPON COMPLETION WITH BOTH THE SUPERSTRUCTURE AND THE BASEMENTS ALSO PAINTED WHITE.



**PROPOSED PAINTING CONT'D**



**PROPOSED PAINTING CONT'D**



## PROPOSED PAINTING WEST WING VIEW



**PROPOSED PAINTING AERIAL VIEW**



## PROPOSED PAINTING FINAL

