

# NEAC

Netherlands American Cemetery Visitor Center

Final Design

**Commission of Fine Arts**

2020.06.18



dGm<sup>R</sup>

hp engineers

**Pieters**  
BOUWTECHNIEK

KARRES  
BRANDS

**KAAN** Architecten

**U.S. COMMISSION OF FINE ARTS**  
CONCEPT DESIGN RECOMMENDATIONS

*27 SEPTEMBER 2019*

# U.S. COMMISSION OF FINE ARTS RECOMMENDATIONS

## U.S. COMMISSION OF FINE ARTS

ESTABLISHED BY CONGRESS 17 MAY 1910

401 F STREET NW SUITE 312 WASHINGTON DC 20001-2728 202-504-2200 FAX 202-504-2195 WWW.CFA.GOV

27 September 2019

Dear General Matz:

In its meeting of 19 September, the Commission of Fine Arts reviewed a concept design submission for a new visitor center building at the Netherlands American Cemetery in Margraten near Maastricht. The Commission approved the proposal, providing the following recommendations for the development of the design.

The Commission members expressed appreciation for the clear and well-organized presentation; they characterized the design as elegant and compatible with the existing cemetery. They recommended further study of the circulation patterns to ensure that the progression to and from the visitor center, the memorial, and the parking lots is apparent for visitors and easy to negotiate. Noting the compelling diagram presented of a wood box within a concrete shell above a stone base, they suggested that the use of more wood in the interior of the visitor center could help reinforce the design and provide a warm contrast to the concrete of the building's structure and exterior fascia.

The Commission looks forward to further review of the design for this important project. As always, the staff is available to assist you with your next submission.

Sincerely,



Thomas E. Luebke, FAIA  
Secretary

Major General William M. Matz, Secretary  
American Battle Monuments Commission  
2300 Clarendon Boulevard, Suite 500  
Arlington, VA 22201-3367

cc: Vincent Panhuysen, KAAN Architecten

# U.S. COMMISSION OF FINE ARTS RECOMMENDATIONS

- study **circulations patterns / experiences**  
from and to the visitor center

## U.S. COMMISSION OF FINE ARTS

ESTABLISHED BY CONGRESS 17 MAY 1910

401 F STREET NW SUITE 312 WASHINGTON DC 20001-2728 202-504-2200 FAX 202-504-2195 WWW.CFA.GOV

27 September 2019

Dear General Matz:

In its meeting of 19 September, the Commission of Fine Arts reviewed a concept design submission for a new visitor center building at the Netherlands American Cemetery in Margraten near Maastricht. The Commission approved the proposal, providing the following recommendations for the development of the design.

The Commission members expressed appreciation for the clear and well-organized presentation; they characterized the design as elegant and compatible with the existing cemetery. They recommended further **study of the circulation patterns to ensure that the progression to and from the visitor center, the memorial, and the parking lots is apparent for visitors and easy to negotiate.** Noting the compelling diagram presented of a wood box within a concrete shell above a stone base, they suggested that the use of more wood in the interior of the visitor center could help reinforce the design and provide a warm contrast to the concrete of the building's structure and exterior fascia.

The Commission looks forward to further review of the design for this important project. As always, the staff is available to assist you with your next submission.

Sincerely,



Thomas E. Luebke, FAIA  
Secretary

Major General William M. Matz, Secretary  
American Battle Monuments Commission  
2300 Clarendon Boulevard, Suite 500  
Arlington, VA 22201-3367

cc: Vincent Panhuysen, KAAN Architecten



# U.S. COMMISSION OF FINE ARTS RECOMMENDATIONS

- study **circulations patterns / experiences** from and to the visitor center
- increase the use of wood in the interior to enhance a **warm contrast** to the concrete

## U.S. COMMISSION OF FINE ARTS

ESTABLISHED BY CONGRESS 17 MAY 1910

401 F STREET NW SUITE 312 WASHINGTON DC 20001-2728 202-504-2200 FAX 202-504-2195 WWW.CFA.GOV

27 September 2019

Dear General Matz:

In its meeting of 19 September, the Commission of Fine Arts reviewed a concept design submission for a new visitor center building at the Netherlands American Cemetery in Margraten near Maastricht. The Commission approved the proposal, providing the following recommendations for the development of the design.

The Commission members expressed appreciation for the clear and well-organized presentation; they characterized the design as elegant and compatible with the existing cemetery. They recommended further study of the circulation patterns to ensure that the progression to and from the visitor center, the memorial, and the parking lots is apparent for visitors and easy to negotiate. Noting the compelling diagram presented of a wood box within a concrete shell above a stone base, they suggested that **the use of more wood in the interior of the visitor center could help reinforce the design and provide a warm contrast to the concrete** of the building's structure and exterior fascia.

The Commission looks forward to further review of the design for this important project. As always, the staff is available to assist you with your next submission.

Sincerely,



Thomas E. Luebke, FAIA  
Secretary

Major General William M. Matz, Secretary  
American Battle Monuments Commission  
2300 Clarendon Boulevard, Suite 500  
Arlington, VA 22201-3367

cc: Vincent Panhuysen, KAAN Architecten

**NETHERLANDS AMERICAN CEMETERY**  
MARGRATEN







NEAC  
EUROPE





Amsterdam

Brussels

Maastricht

**Netherlands American Cemetery**

Henry-Chapelle Cemetery

Ardennes Cemetery

Luxembourg

**THE NETHERLANDS**  
NEAC



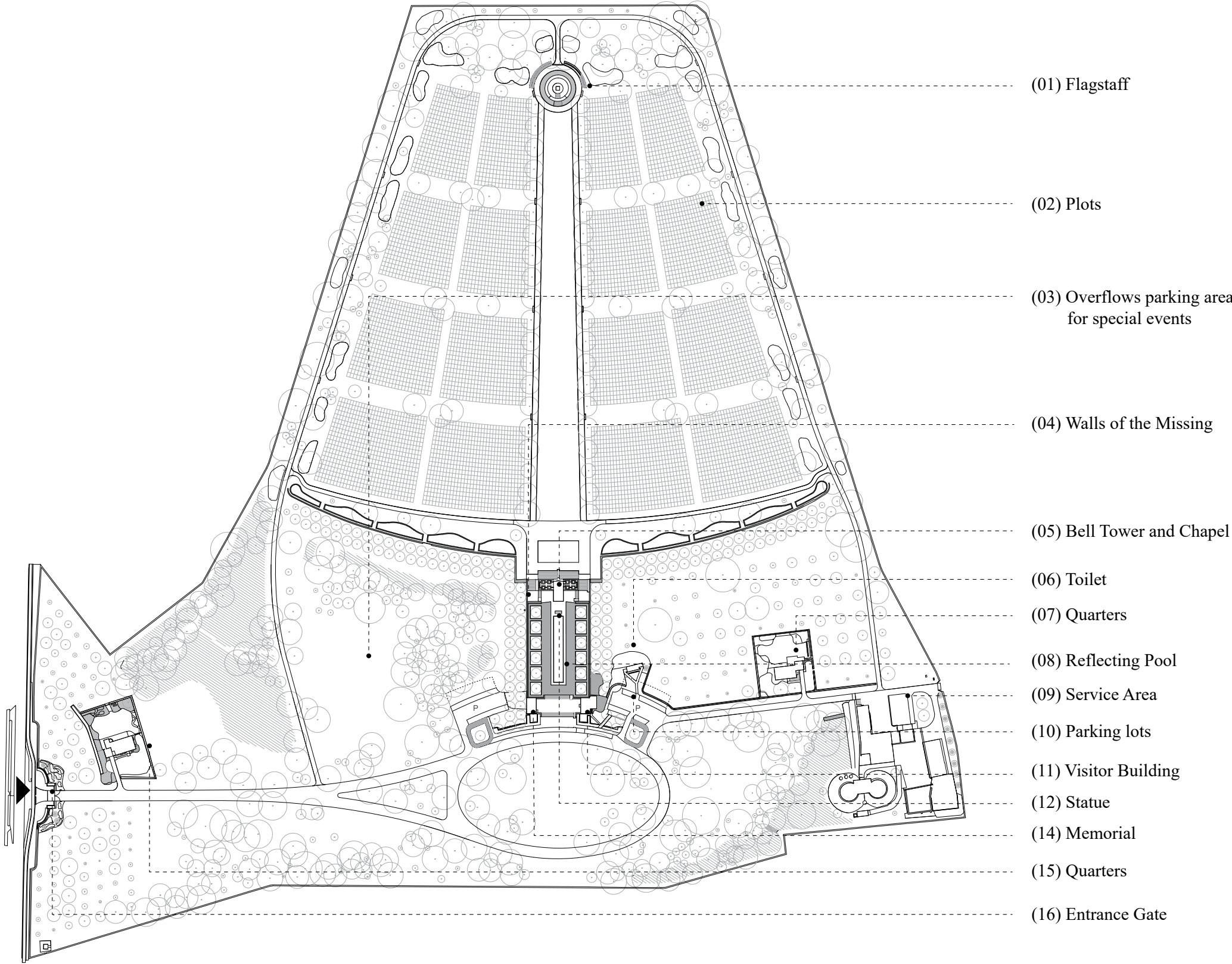
NEAC  
SATELLITE VIEW



**SITE ANALYSIS**  
CEMETERY FEATURES



SITE ANALYSIS  
CEMETERY FEATURES  
LANDSCAPE





SITE ANALYSIS  
CEMETERY FEATURES  
LANDSCAPE

Central Green Mall



Headstones



Border Hedges



Orchard and Double Row of Plane Trees



Japanese Cherry Trees

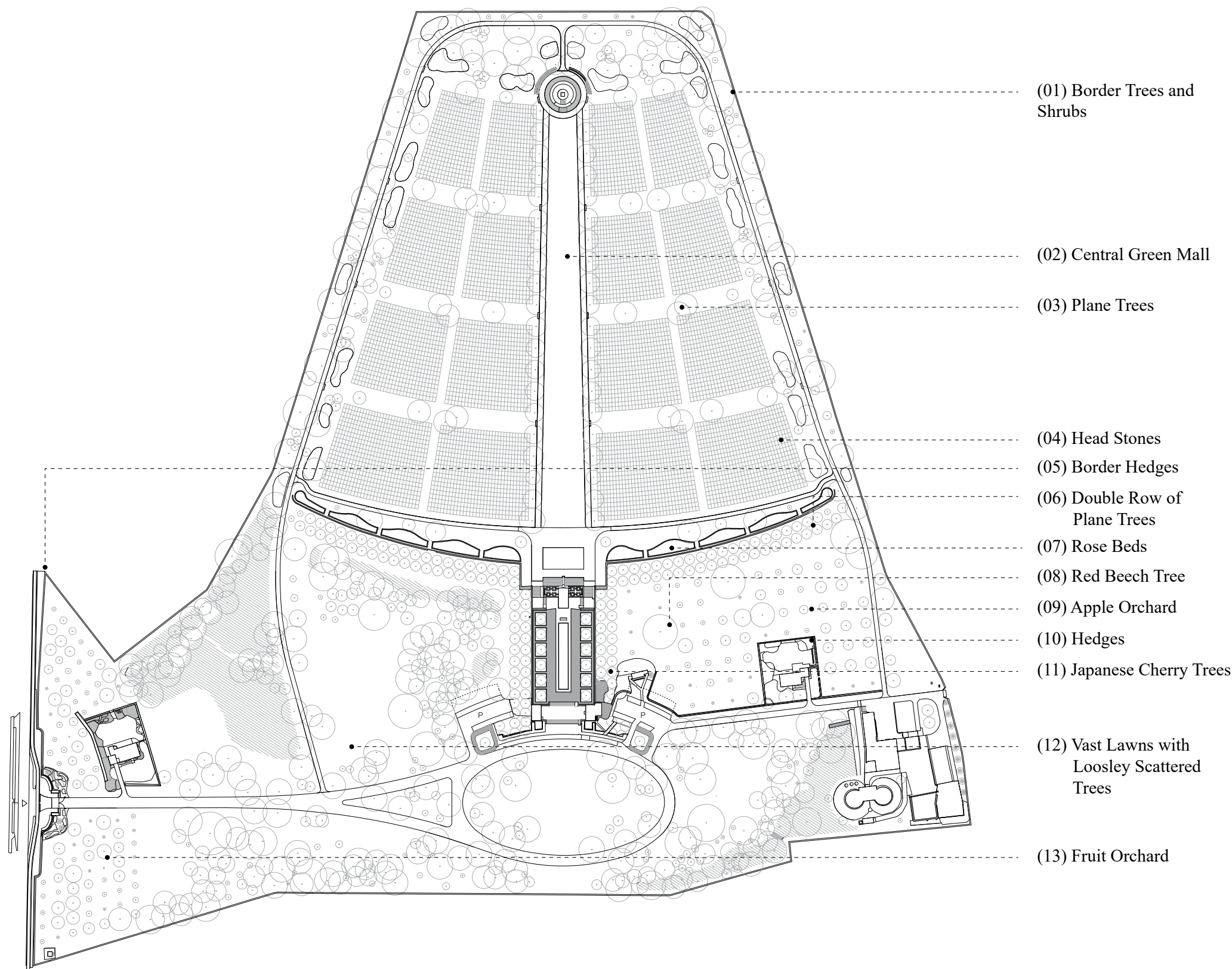


Burial Field





SITE ANALYSIS  
CEMETERY FEATURES  
ARCHITECTURE



SITE ANALYSIS  
CEMETERY FEATURES  
ARCHITECTURE

Walls of the Missing



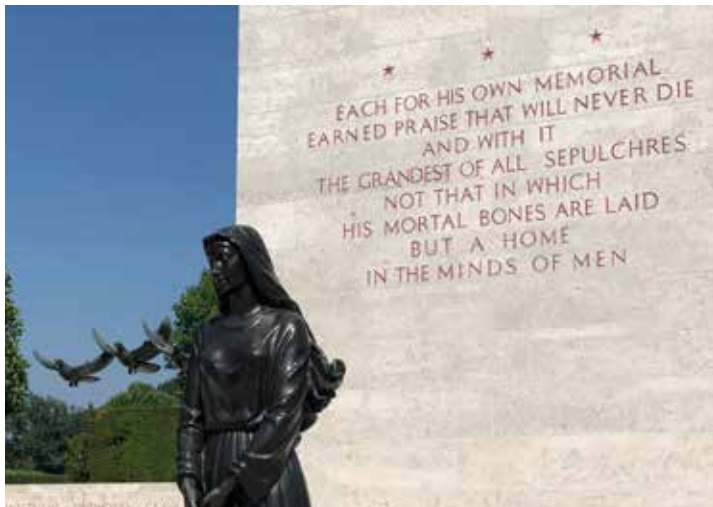
Royal Crown inside  
the Chapel Tower



Reflecting Pool and  
the Chapel Tower



Statue of the Morning Woman



Memorial Building /  
Map Room



Entrance Gate

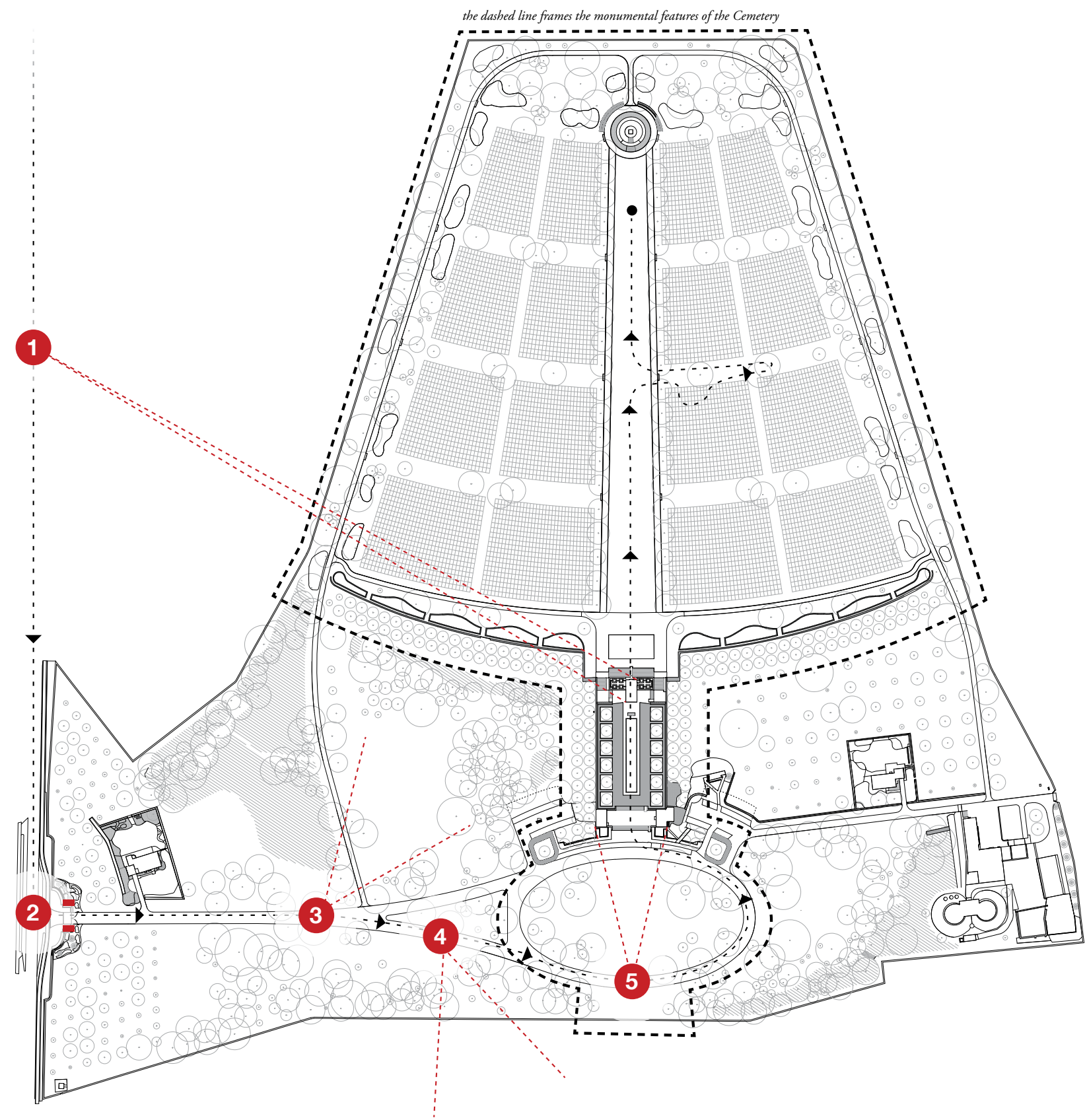


# **SITE ANALYSIS**

## VISITOR EXPERIENCES

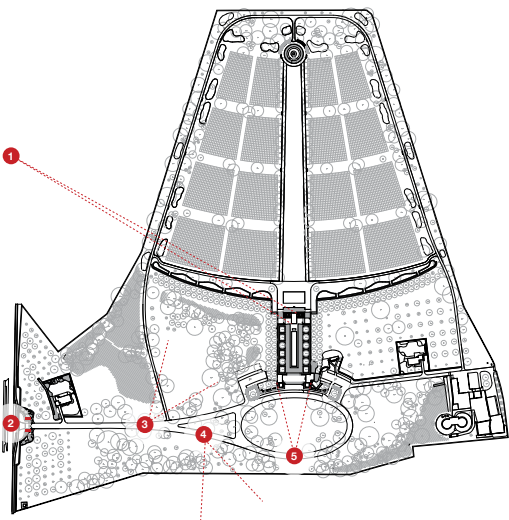


SITE ANALYSIS  
VISITOR EXPERIENCES  
ARRIVAL



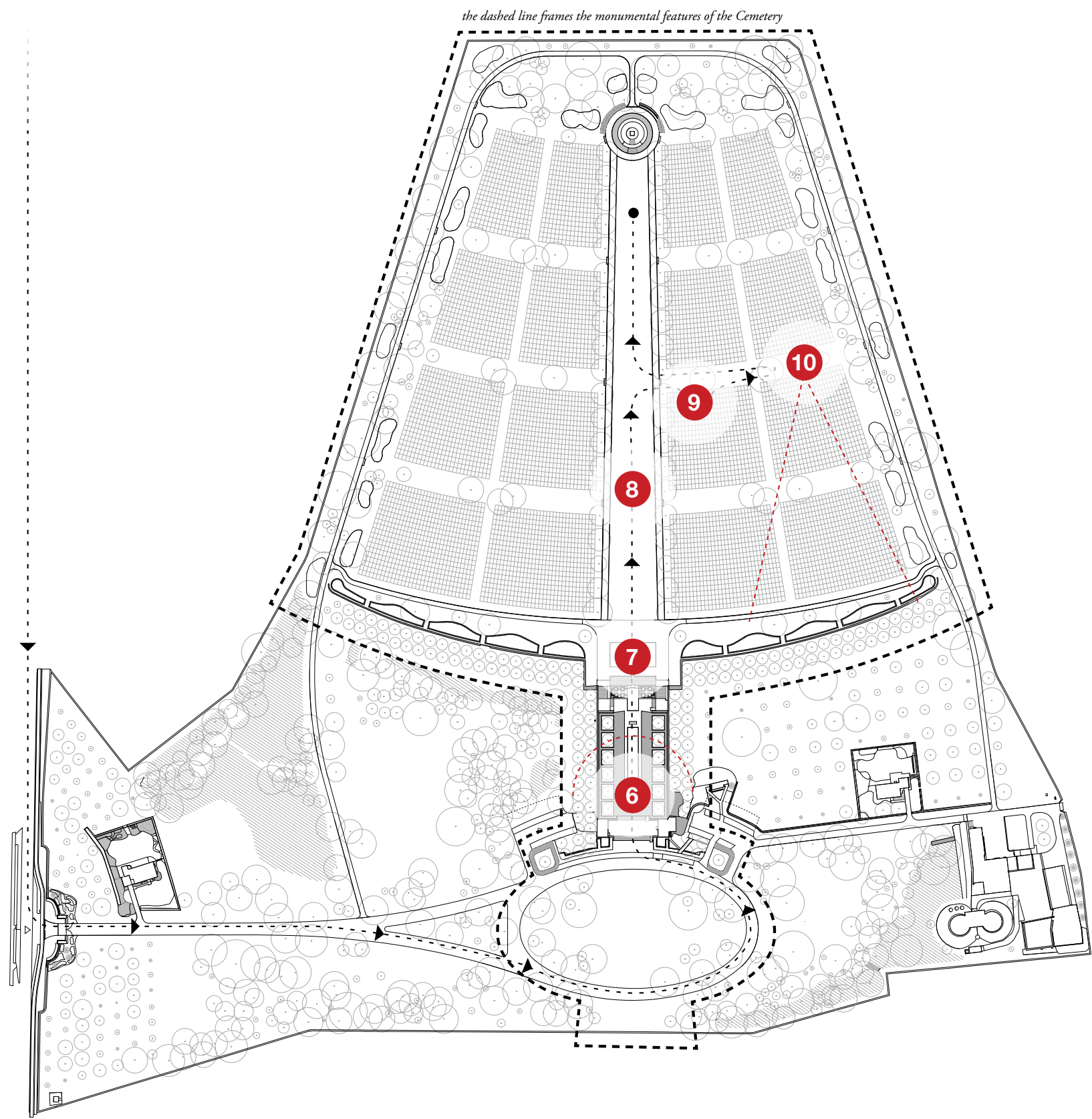


SITE ANALYSIS  
VISITOR EXPERIENCES  
ARRIVAL



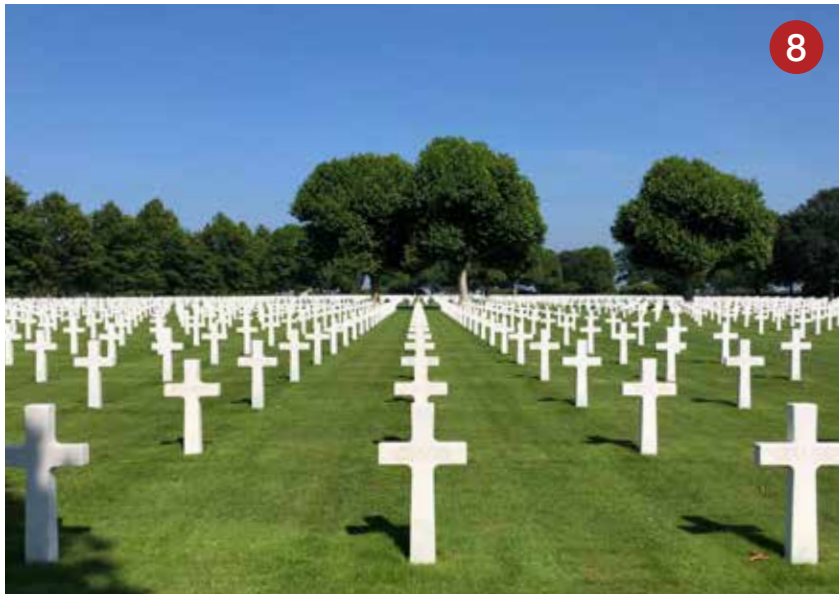
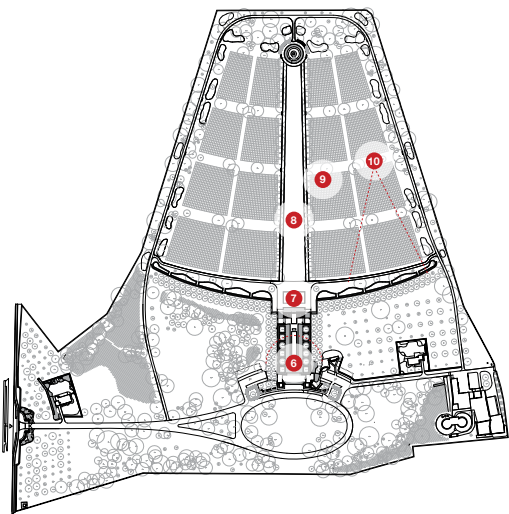


SITE ANALYSIS  
VISITOR EXPERIENCES  
MONUMENT



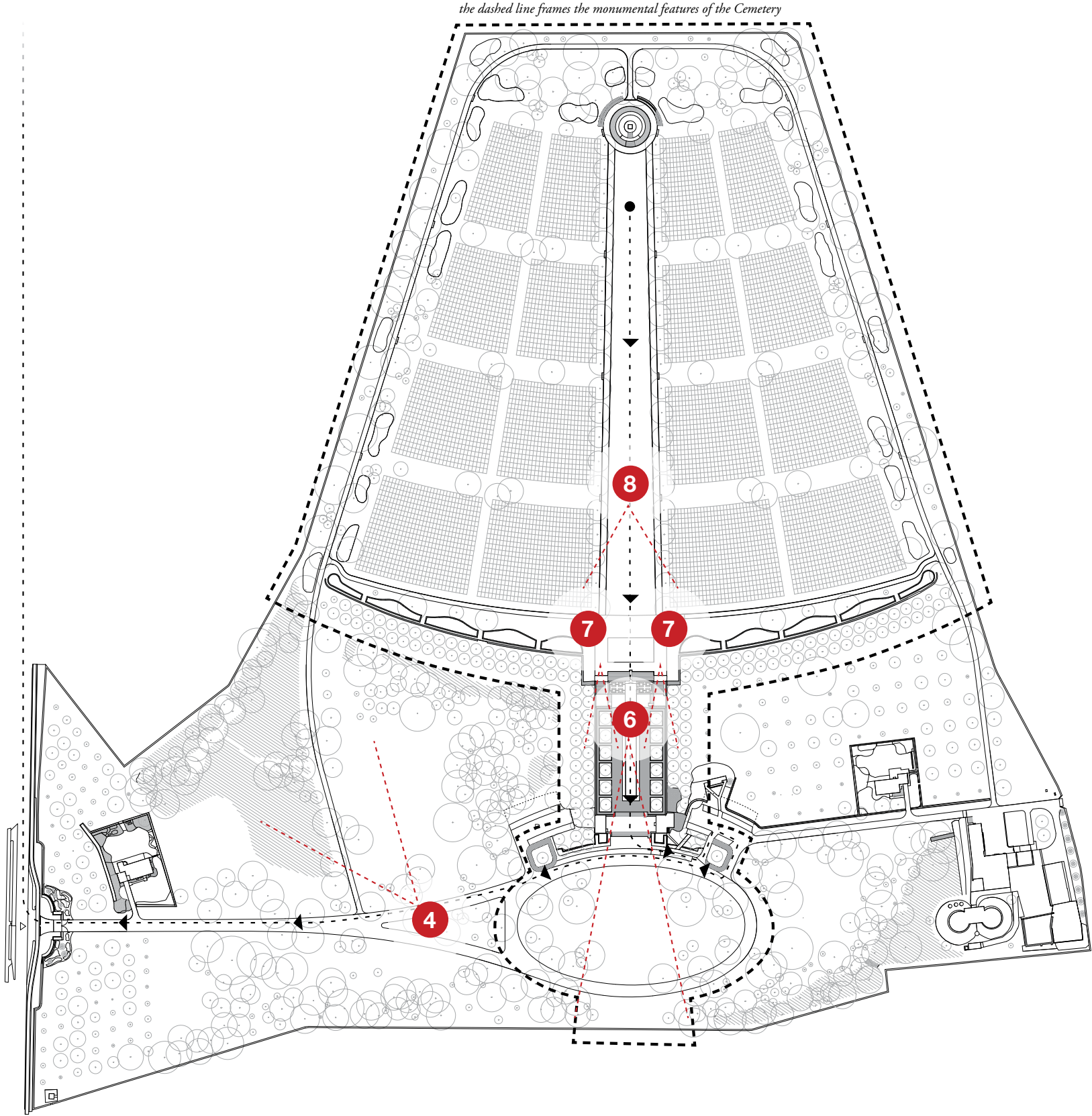


SITE ANALYSIS  
VISITOR EXPERIENCES  
MONUMENT





SITE ANALYSIS  
VISITOR EXPERIENCES  
DEPARTURE





SITE ANALYSIS  
VISITOR EXPERIENCES  
DEPARTURE

