

**John Cavanaugh Sculpture at  
New Hampshire Avenue and ‘Q’ Street NW**

*Concept Level Submission to the U.S.  
Commission of Fine Arts*

*Scope:*

*To continue the recent precedence of installing John Cavanaugh's sculptures within the east Dupont Circle neighborhood's public space. Cavanaugh led the transformation of the community as a diverse and artistic center in our capital city. The proposed sculpture, Twilight, was created by Cavanaugh to symbolize that moment of special evening light and camaraderie that links so many lives in this neighborhood. This installation will add to the four Cavanaugh sculptures placed along Q street on the public space adjacent to the Women's National Democratic Club.*

**Dupont Main Streets with Resilience Studio and  
The John Cavanaugh Foundation**



[Http://www.cavanaughfoundation.org/index.php](http://www.cavanaughfoundation.org/index.php)



[Http://www.dupontcirclemainstreets.org/](http://www.dupontcirclemainstreets.org/)

**resilience\_studio**

<http://www.resiliencestudio.com>

August, 2022

# T w i l i g h t





**John Cavanaugh Sculpture at  
New Hampshire Avenue and ‘Q’ Street NW**

*Program:*  
The installation includes one bronze sculpture mounted on a granite pedestal. The goal is to place this graceful sculpture at the triangle park intersection of three landmark streets: New Hampshire Avenue, P Street, and 18th Street, NW. The Dupont Circle Citizens Association has agreed to upgrade and maintain the triangles' plantings. There will be no changes to the site topography, and drainage will not be affected. Dupont Circle Main Streets has worked with Washington Gas and the plinth footing will be placed within their guidelines for proximity to existing infrastructure.

Dupont Main Streets with Resilience Studio and  
The John Cavanaugh Foundation



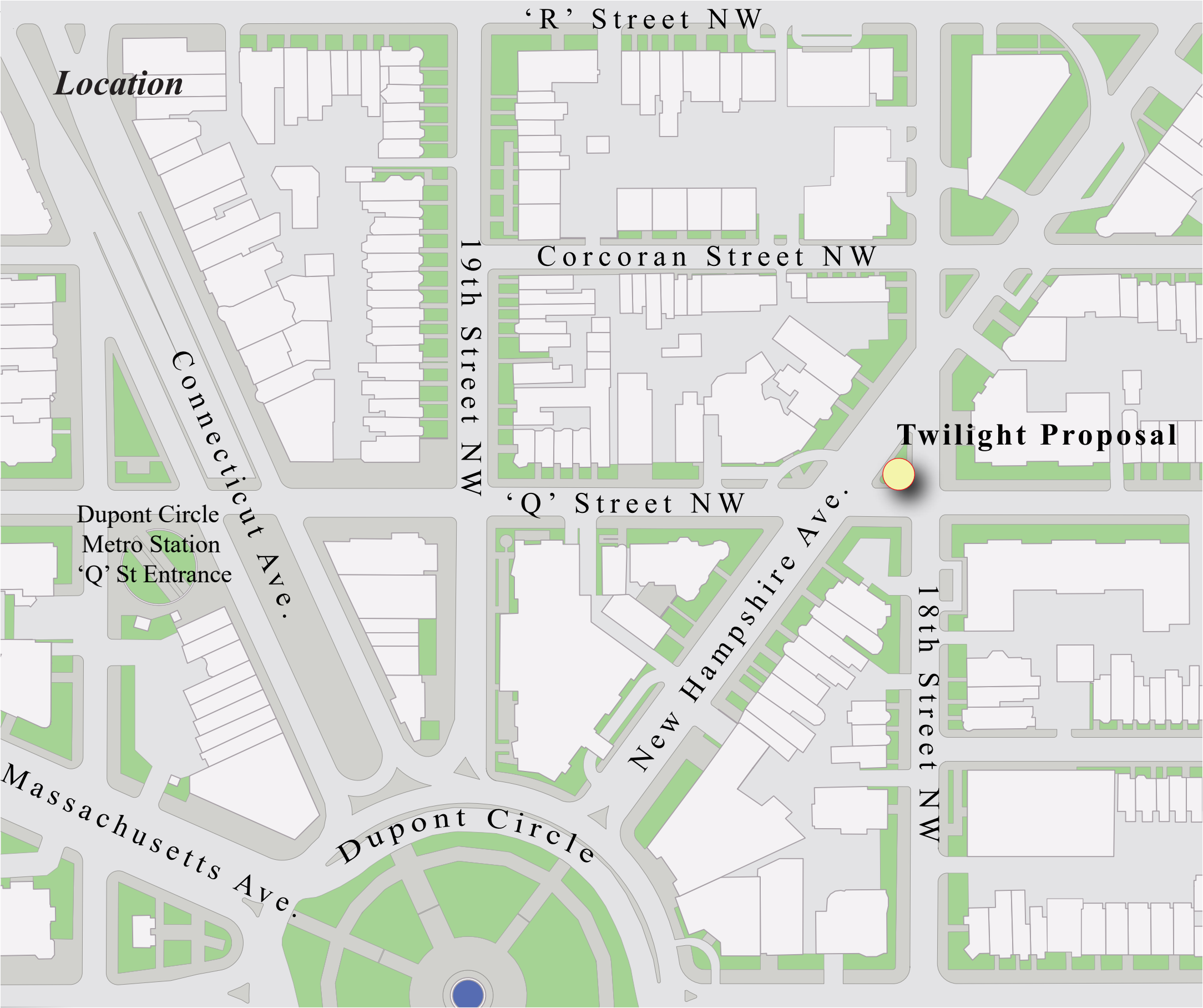
[Http://www.cavanaughfoundation.org/index.php](http://www.cavanaughfoundation.org/index.php)



[Http://www.dupontcirclemainstreets.org/](http://www.dupontcirclemainstreets.org/)

**resilience\_studio**

<http://www.resiliencestudio.com>







New Hampshire Ave NW  
1600

New Hampshire Ave NW  
1600

18 ST NW  
1600

18 ST NW  
1600

IMPERIAL HOUSE

NO PARKING  
TWO-WAY TRAFFIC

NO BUSES

NO THRU TRUCKS  
OVER  
1 1/4 TON  
CAPACITY





**John Cavanaugh Sculpture at  
New Hampshire Avenue and ‘Q’ Street NW**

*Proposed Visualization*

*To facilitate the installation, the Cavanaugh Foundation will coordinate a traffic control plan to guide pedestrian and vehicular traffic movements along ‘Q’ Street, New Hampshire Avenue and 18th Streets NW adjacent to the site during installation. The Cavanaugh Foundation is familiar with this process, having implemented such a project previously for the four sculptures placed in Q Street's public realm adjacent to the Womens Democratic Club.*

*Dupont Circle Main Street has received a letter of agreement with the DCCA, the Dupont Circle Citizens Association, to maintain the site as required by DDOT.*

Dupont Main Streets with Resilience Studio and  
The John Cavanaugh Foundation



[Http://www.cavanaughfoundation.org/index.php](http://www.cavanaughfoundation.org/index.php)



[Http://www.dupontcirclemainstreets.org/](http://www.dupontcirclemainstreets.org/)

**resilience\_studio**

<http://www.resiliencestudio.com>

August, 2022

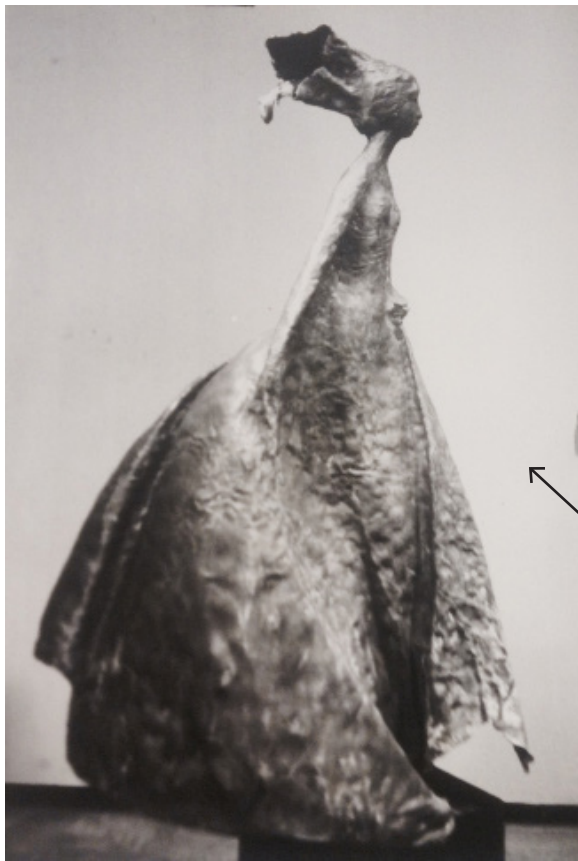


*View across ‘Q’ Street NW to ‘Twilight’ sculpture on granite pedestal*

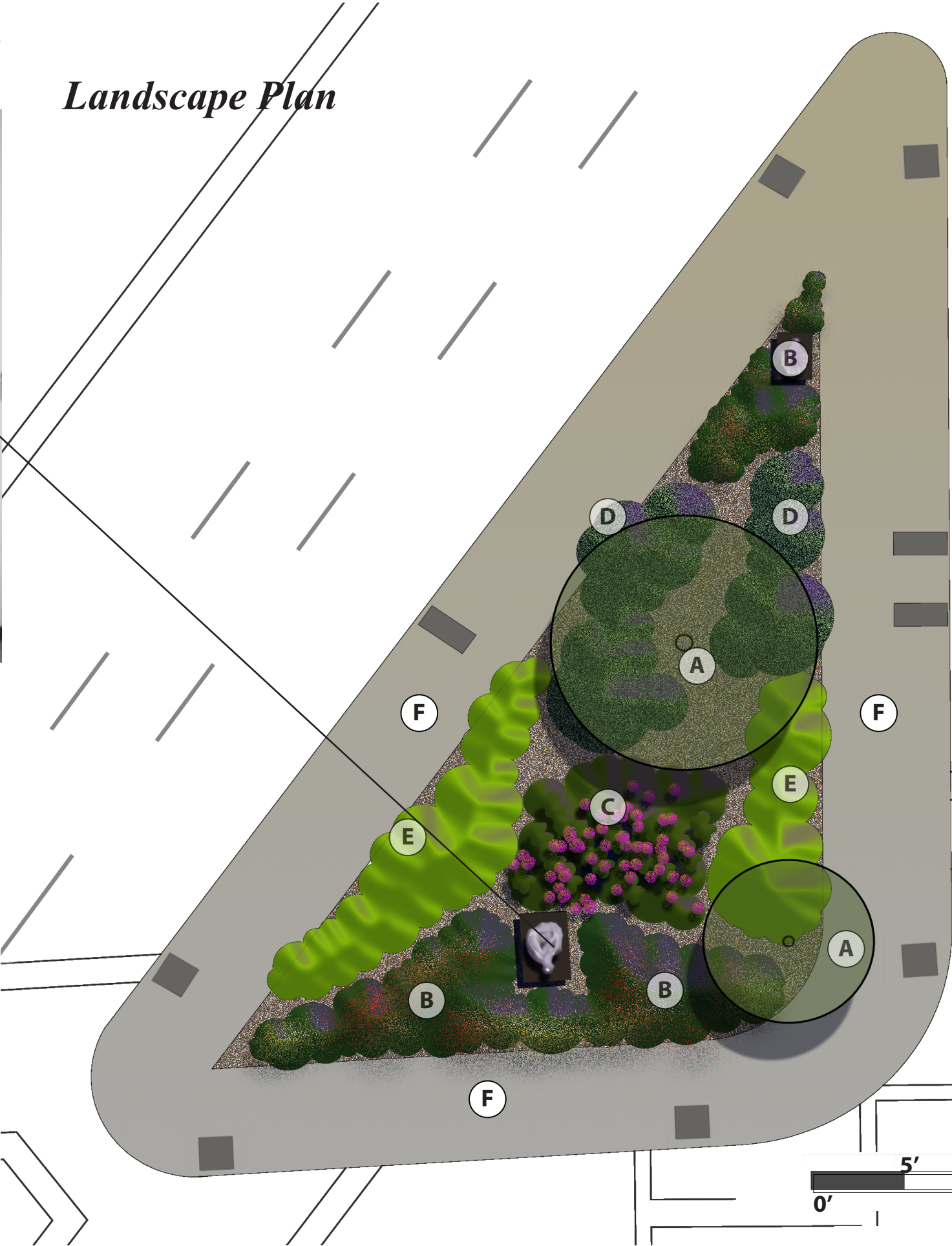


John Cavanaugh Sculpture at  
New Hampshire Avenue and 'Q' Street NW

Twilight sculpture  
50.2 inch height  
on 45" height  
stone pedestal -  
for size see page 3



Landscape Plan



Legend

- (A) Existing trees
- (B) Low blooming perennials  
30 inch height max
- (C) Tall blooming perennials
- (D) Native evergreen shrubs  
- Ilex glabra 'Red Tip' -  
Inkberry Holly
- (E) Native deciduous shrubs  
- Rhus typhina Tiger  
Eyes (Bailtiger)
- (F) No change to topography  
from existing conditions  
required for sculpture  
installation.

Dupont Main Streets with Resilience Studio and  
The John Cavanaugh Foundation



[Http://www.cavanaughfoundation.org/index.php](http://www.cavanaughfoundation.org/index.php)



[Http://www.dupontcirclemainstreets.org/](http://www.dupontcirclemainstreets.org/)

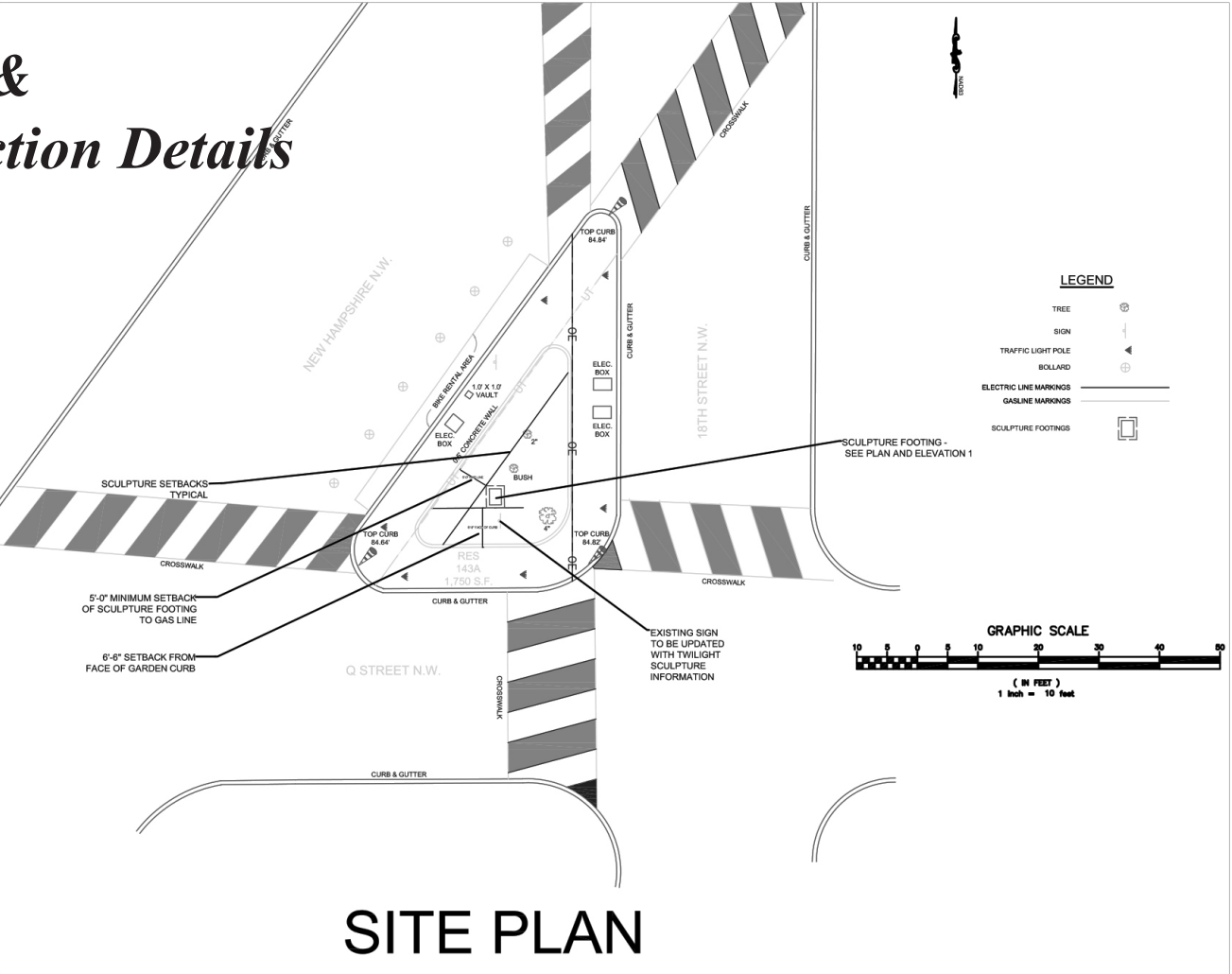
resilience\_studio  
<http://www.resiliencestudio.com>

August, 2022



# John Cavanaugh Sculpture at New Hampshire Avenue and 'Q' Street NW

## Site Plan & Connstruction Details



# Dupont Main Streets with Resilience Studio and The John Cavanaugh Foundation



[Http://www.cavanaughfoundation.org/index.php](http://www.cavanaughfoundation.org/index.php)

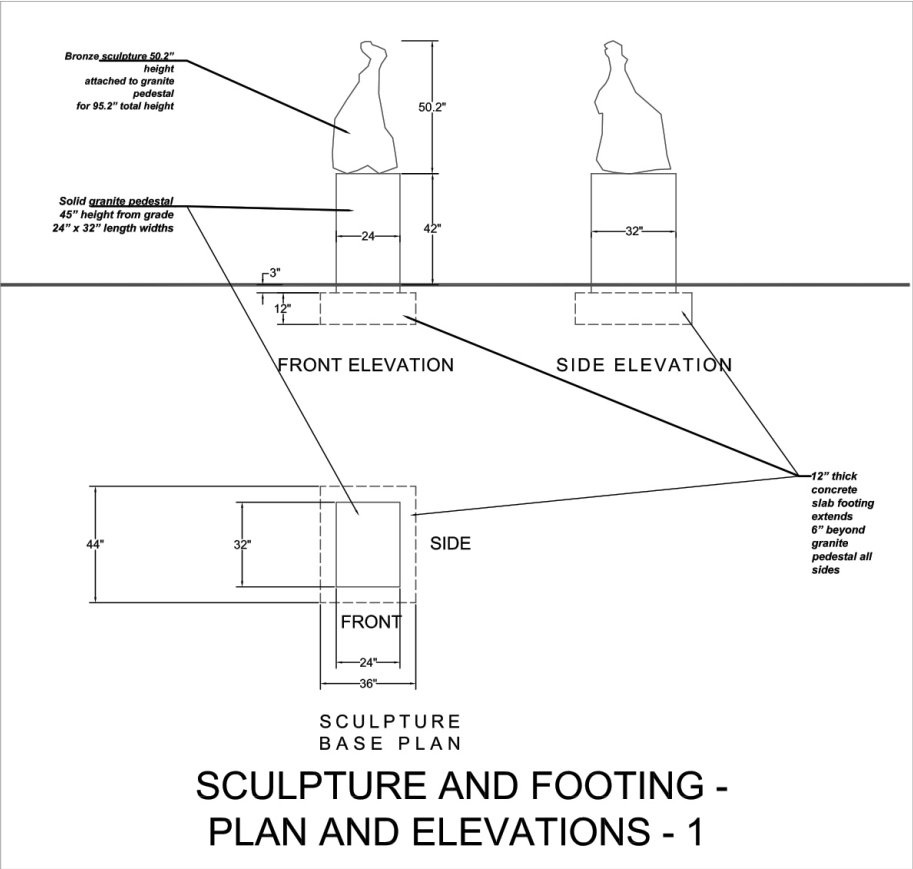


[Http://www.dupontcirclemainstreets.org/](http://www.dupontcirclemainstreets.org/)



<http://www.resiliencestudio.com>

August, 2022



**NOTE:**  
*No mechanized equipment to be used within 2 feet of existing gas lines*



John Cavanaugh Sculpture at  
New Hampshire Avenue and 'Q' Street NW

Sealed Site Survey

Dupont Main Streets with Res  
The John Cavanaugh Foundati



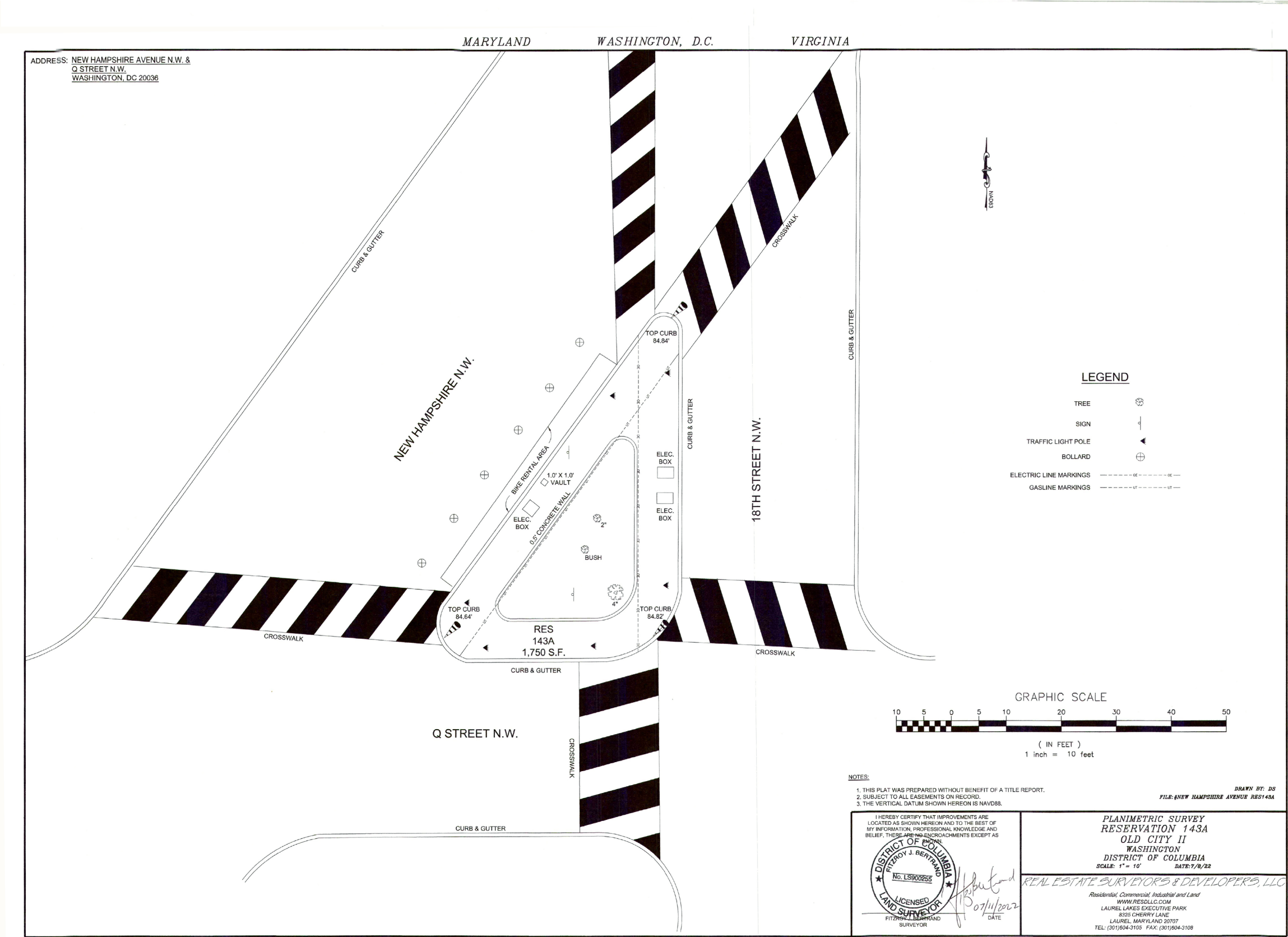
[Http://www.cavanaughfoundation.org/index](http://www.cavanaughfoundation.org/index).



[Http://www.dupontcirclemainstreets.org/](http://www.dupontcirclemainstreets.org/)

resilience\_studio

<http://www.resiliencestudio.com>

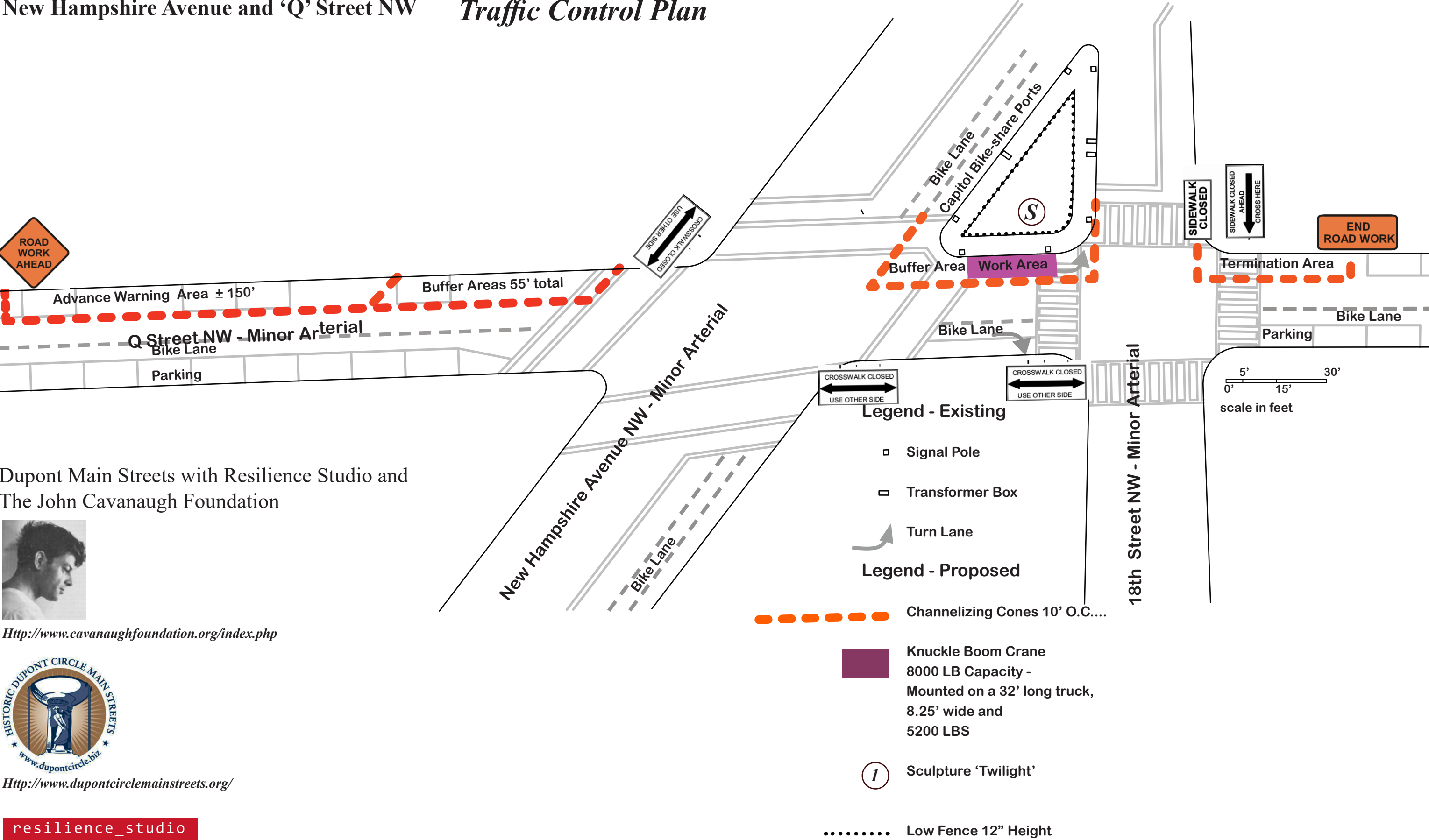


August, 2022



John Cavanaugh Sculpture at  
New Hampshire Avenue and 'Q' Street NW

Traffic Control Plan



Dupont Main Streets with Resilience Studio and  
The John Cavanaugh Foundation



[Http://www.cavanaughfoundation.org/index.php](http://www.cavanaughfoundation.org/index.php)



[Http://www.dupontcirclemainstreets.org/](http://www.dupontcirclemainstreets.org/)

resilience\_studio

<http://www.resiliencestudio.com>

August, 2022



**John Cavanaugh Sculpture at  
New Hampshire Avenue and ‘Q’ Street NW**

*History*

**History:**

*There are over a dozen Cavanaugh sculptures in Dupont Circle, plus his life-sized Olive Risley Seward in Seward Square, at Carolina Avenue and Sixth Street SE, and the Demeter sculpture on the grounds of the National Arboretum (both in Washington DC.) The 1978 weekend magazine section published by the Washington Herald covered the seven sculptures Cavanaugh had just unveiled on his restored house on Swann Street. Still, as importantly, it credited him and his architect partner, Philip Froeder, with rehabilitating the vacant building and creating uniquely modern apartments that would continue to attract new residents to Dupont Circle. Calling them "The Preservationist of Swann Street," the project stressed that they were one of a handful of people that had been able to turn the neighborhood around by using their own funds to rehab a number of buildings (Dupont Circle had been redlined as not eligible for mortgages since the 1960s). The Cavanaugh sculptures, several on their restored houses, have played an important part in the cultural footprint of Dupont Circle. And have been central to the Smithsonian Neighborhood Walks in the Circle.*

Dupont Main Streets with Resilience Studio and  
The John Cavanaugh Foundation



[Http://www.cavanaughfoundation.org/index.php](http://www.cavanaughfoundation.org/index.php)



[Http://www.dupontcirclemainstreets.org/](http://www.dupontcirclemainstreets.org/)

**resilience\_studio**

<http://www.resiliencestudio.com>



*Cavanaugh at his one-man exhibition  
at the Cranbrook Art School in 1955.*



*A drawing of Swann's Way as it looked in 1977  
with Cavanaugh's studio in the store front.*



**John Cavanaugh Sculpture at  
New Hampshire Avenue and ‘Q’ Street NW**

Dupont Main Streets with Resilience Studio and  
The John Cavanaugh Foundation



[Http://www.cavanaughfoundation.org/index.php](http://www.cavanaughfoundation.org/index.php)



[Http://www.dupontcirclemainstreets.org/](http://www.dupontcirclemainstreets.org/)

**resilience\_studio**

<http://www.resiliencestudio.com>

August, 2022



*Existing series of John Cavanaugh sculptures placed on the grounds of the National Womens Society Headquarters in the gardens facing ‘Q’ Street NW*



**John Cavanaugh Sculpture at  
New Hampshire Avenue and ‘Q’ Street NW**

***History and Goals***

*Twilight was sculpted during one of the most prolific and successful periods in Cavanaugh's career, which featured several female dancers and other robed figures. His work has been exhibited in museums and galleries throughout the nation and several sculptures are installed in public sites throughout the United States.*

*Recognized nationally for his work, American Artist Magazine called Cavanaugh the "Master of Hammered Metal." After reviewing his exhibit at the National Sculpture Society Gallery in New York City, praising his work in hammered metal, as well as his bronze and ceramic sculpture. A short time ago, the Not for Tourists Guide to Washington DC included an article about the Cavanaugh sculptures throughout Dupont Circle, pointing out his work's unique style and placement on his restored buildings – noting that "his work would be admired for generations."*

**Goals:**

*It is the goal of this project and Dupont Circle Main Streets to continue expanding the presence of fine art in the public spaces of Dupont Circle for the delight of the residents and visitors to Washington DC. We feel it is essential to keep our neighborhood's legacy alive to inspire future citizens and build on L’Enfant’s vision of a capital city with wide streets and boulevards with a distinct park like and uniquely habitable character.*

Dupont Main Streets with Resilience Studio and  
The John Cavanaugh Foundation



[Http://www.cavanaughfoundation.org/index.php](http://www.cavanaughfoundation.org/index.php)



[Http://www.dupontcirclemainstreets.org/](http://www.dupontcirclemainstreets.org/)

**resilience\_studio**

<http://www.resiliencestudio.com>

August, 2022



*Elm, oak, and hackberry trees form most of the canopy on this part of New Hampshire Ave. at intersection of ‘Q’ Street looking to the Admiral Samuel Francis Du Pont Memorial Fountain in Dupont Circle.  
November 2, 2019*