



# School Without Walls at Francis-Stevens

OCTOBER 20, 2022 – CFA FINAL PRESENTATION #CFA-2892

**PERKINS EASTMAN DC**  
DESIGNING THE DISTRICT



# AGENDA

---

- Project Context
  - Design Principles
  - Site Analysis
  - Existing Building
- Project Scope
- Façade Design Considerations







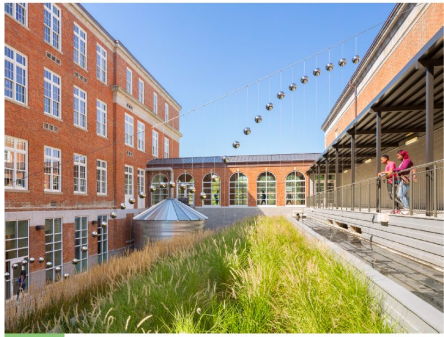
# Project Context

2425 N ST NW

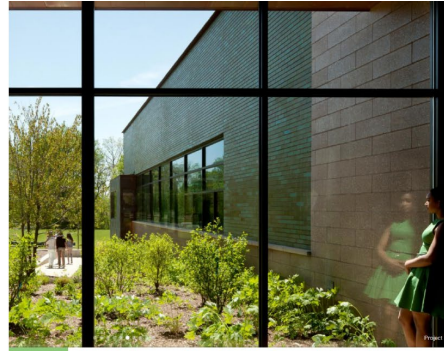


# DESIGN PRINCIPLES

## DESIGN PRINCIPLES



**1** Enhance and Celebrate Connections to the Outdoors



**2** Reinforce the Relationship with Rock Creek Park



**3** Provide a Place that Enhances the Sense of Community



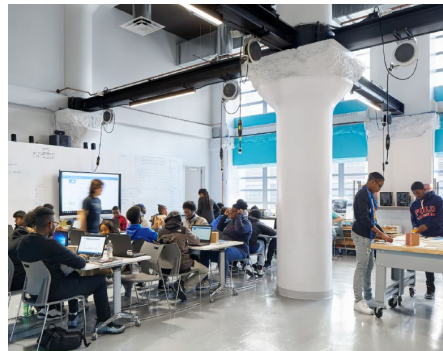
**4** Demonstrate a High-Performance, Healthy Learning Environment



**5** Defer to the Civic Presence of the Historic Structures



**6** Create Vertical Connections for All Grade Levels



**7** Put Learning on Display



**8** Embrace Equitable Student-Centered Spaces

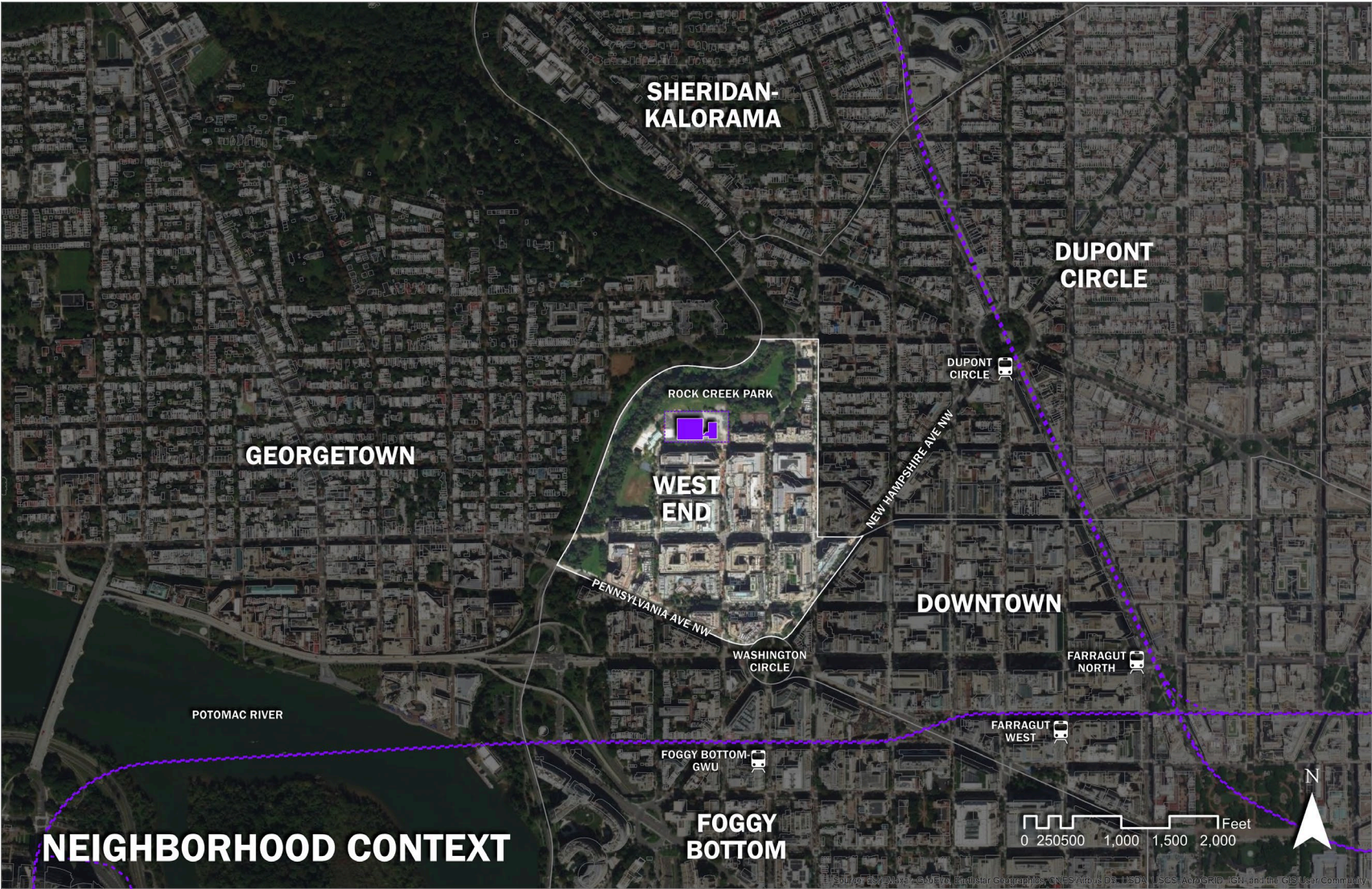


**9** Create a Professional, Nurturing Environment that Inspires Teachers



# SITE ANALYSIS

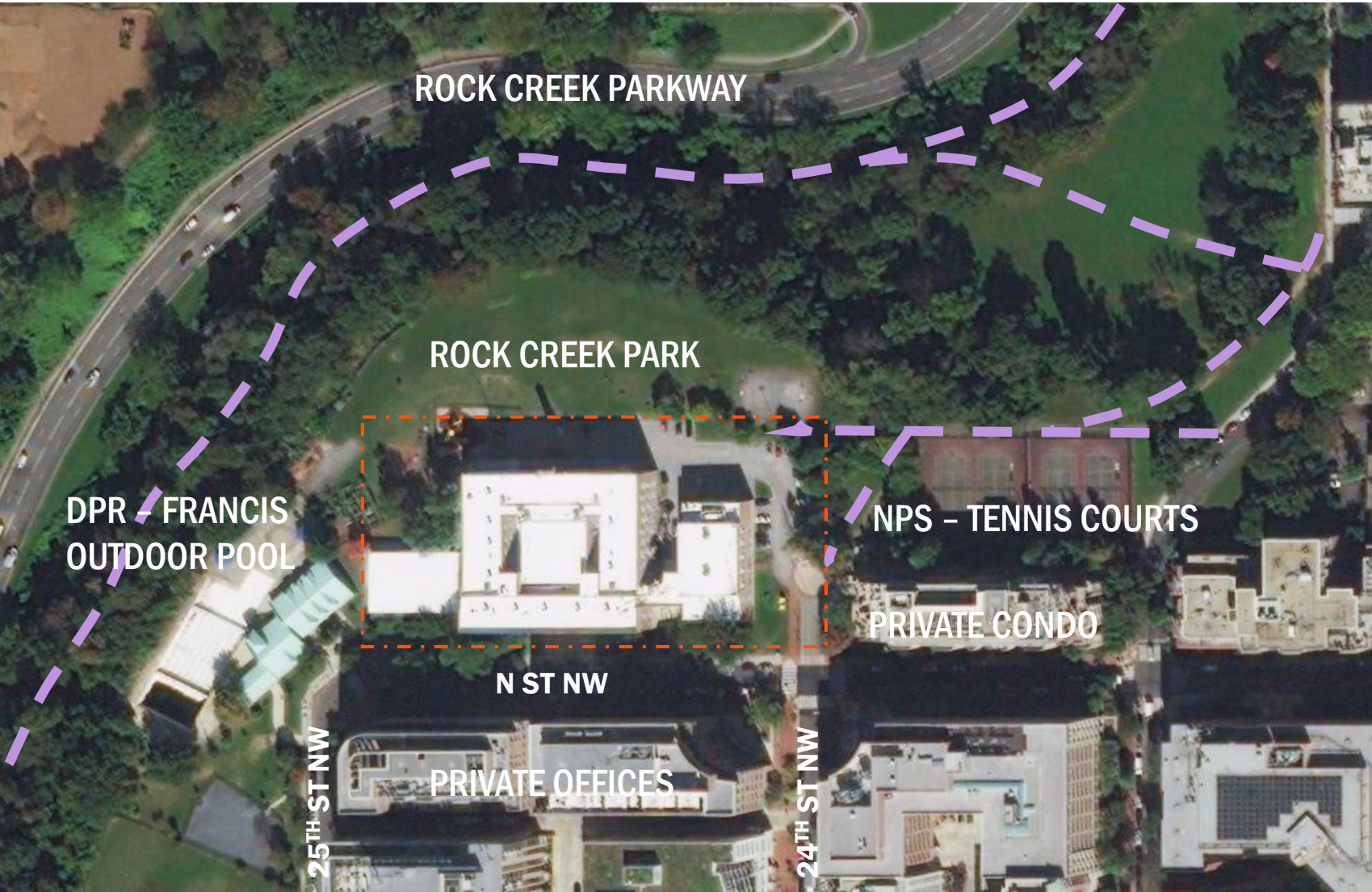
## SCHOOL LOCATION





# SITE ANALYSIS

## SITE CONTEXT AND CONNECTIONS





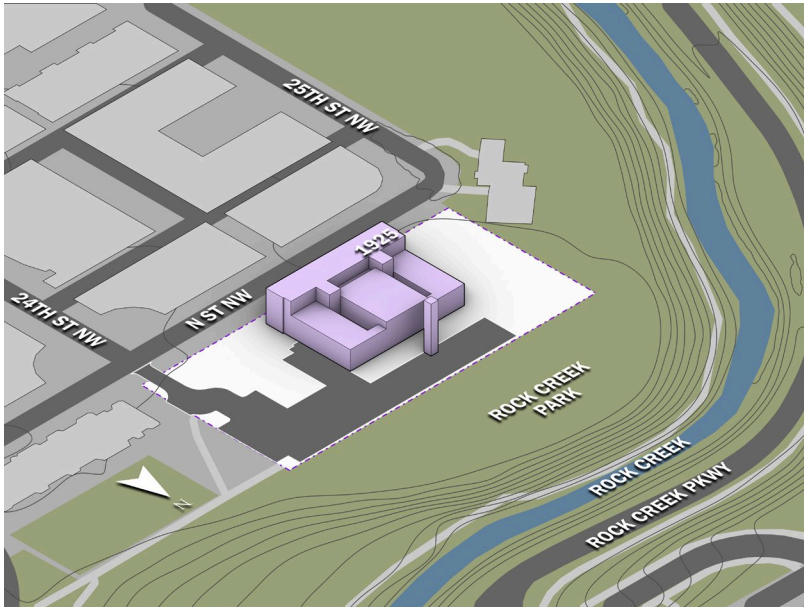
FRANCIS JUNIOR HIGH SCHOOL

# Existing Building

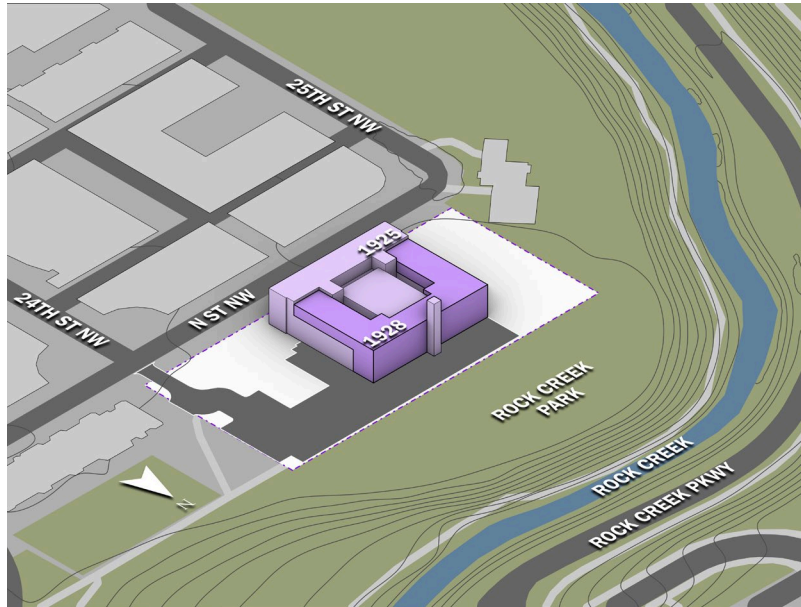


# EXISTING BUILDING

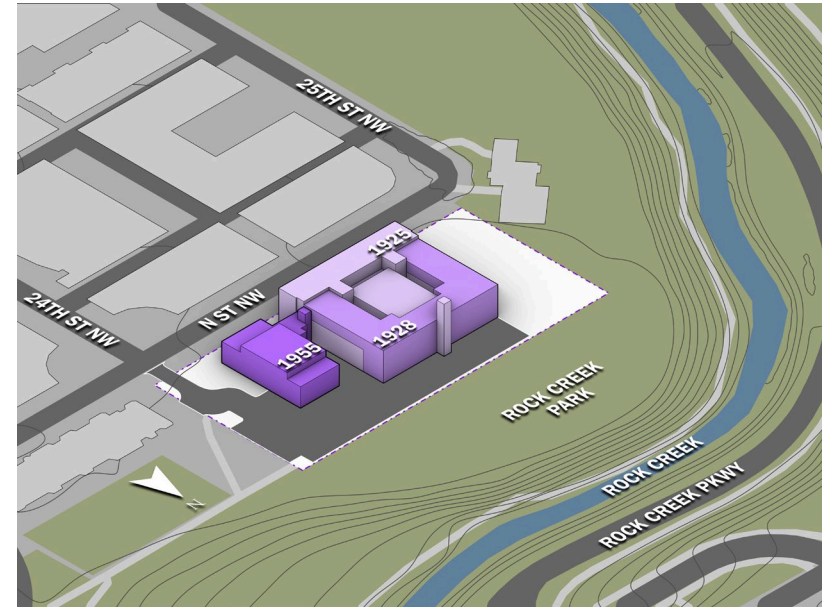
## PROGRESSION OF HISTORICAL ADDITIONS



1925



1928



1955

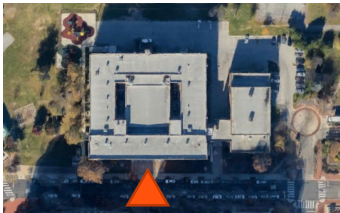


# EXISTING BUILDING

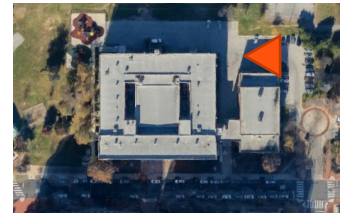
## CONDITIONS



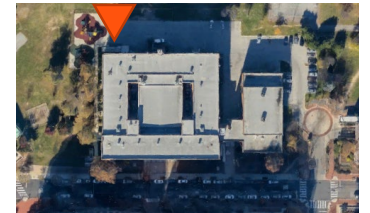
N ST FRONT ENTRY



EAST VIEW OF  
1928 ADDITION



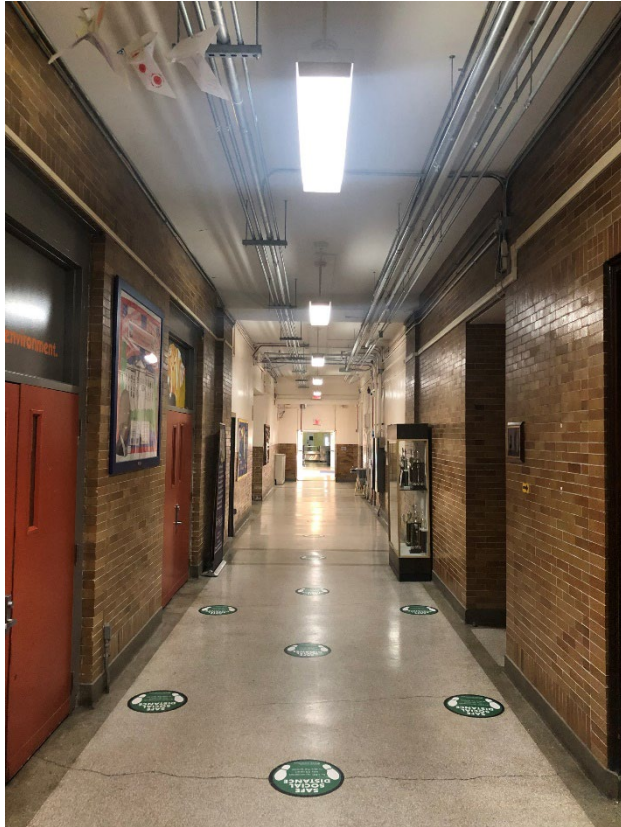
PARK VIEW OF  
1928 ADDITION





# EXISTING BUILDING

## INTERIOR CONDITIONS



**N-S CORRIDOR**



**E-W CORRIDOR**

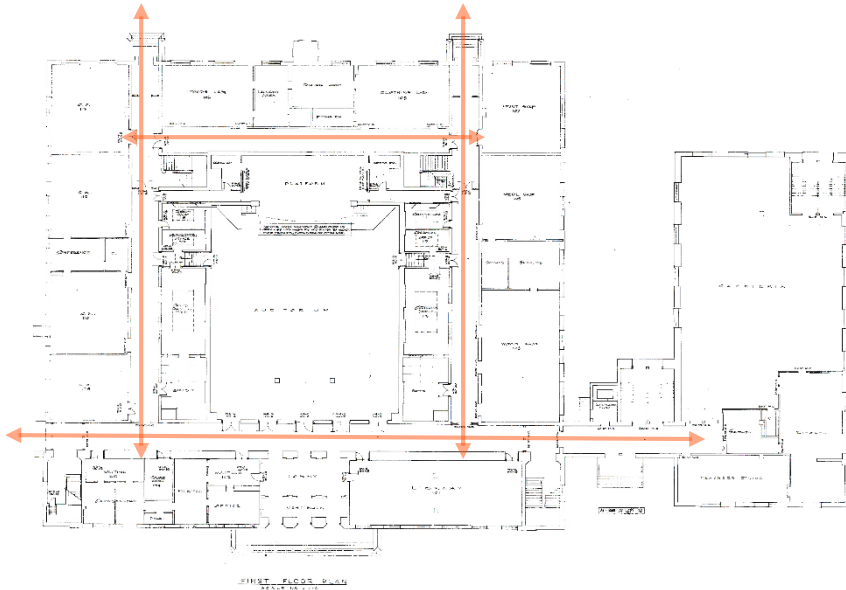


**CLASSROOM**

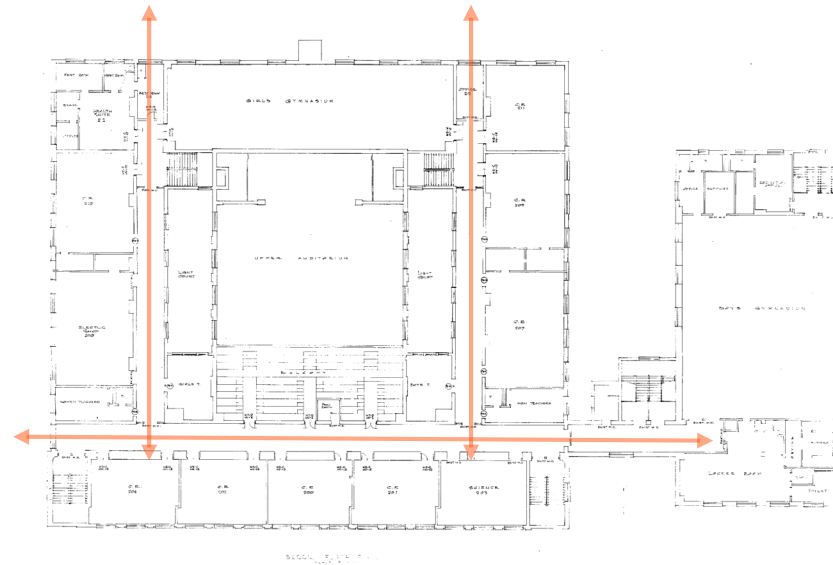


# EXISTING BUILDING

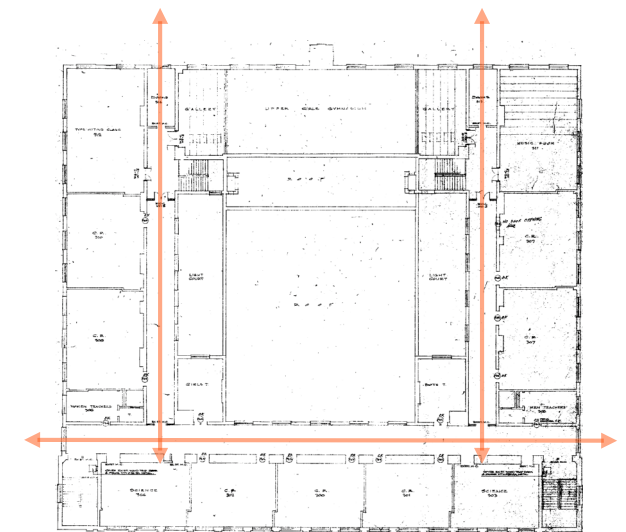
## FLOOR PLANS



FIRST FLOOR



SECOND FLOOR



THIRD FLOOR



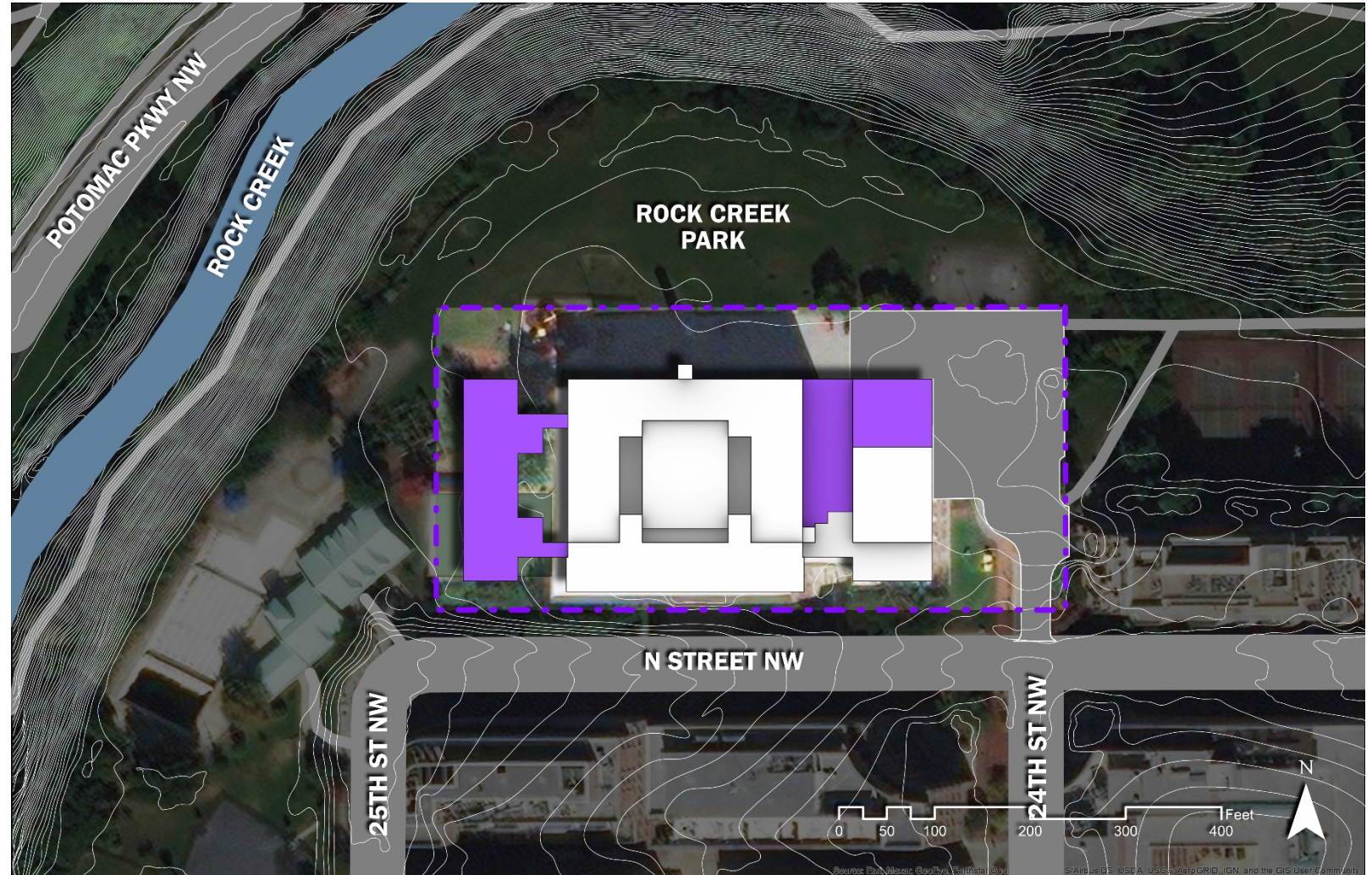
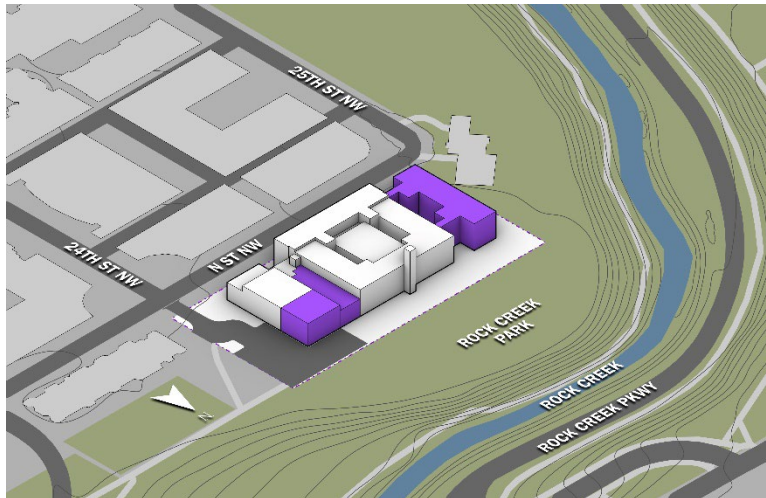
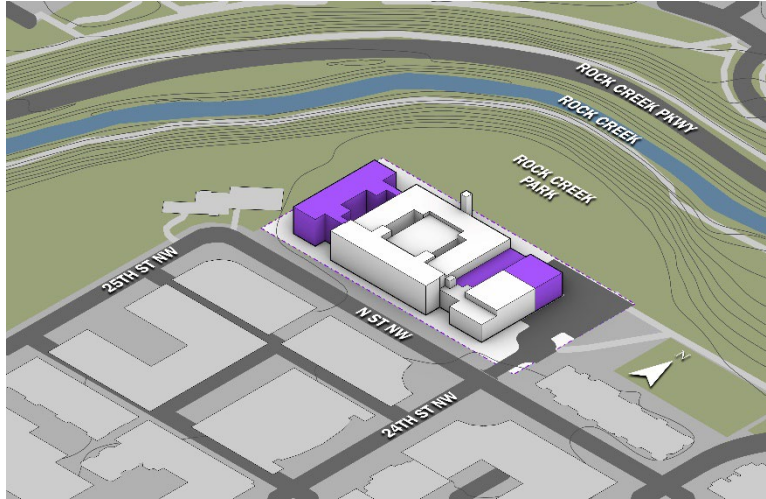
FRANCIS JUNIOR HIGH SCHOOL

# Project Scope



# PROJECT SCOPE

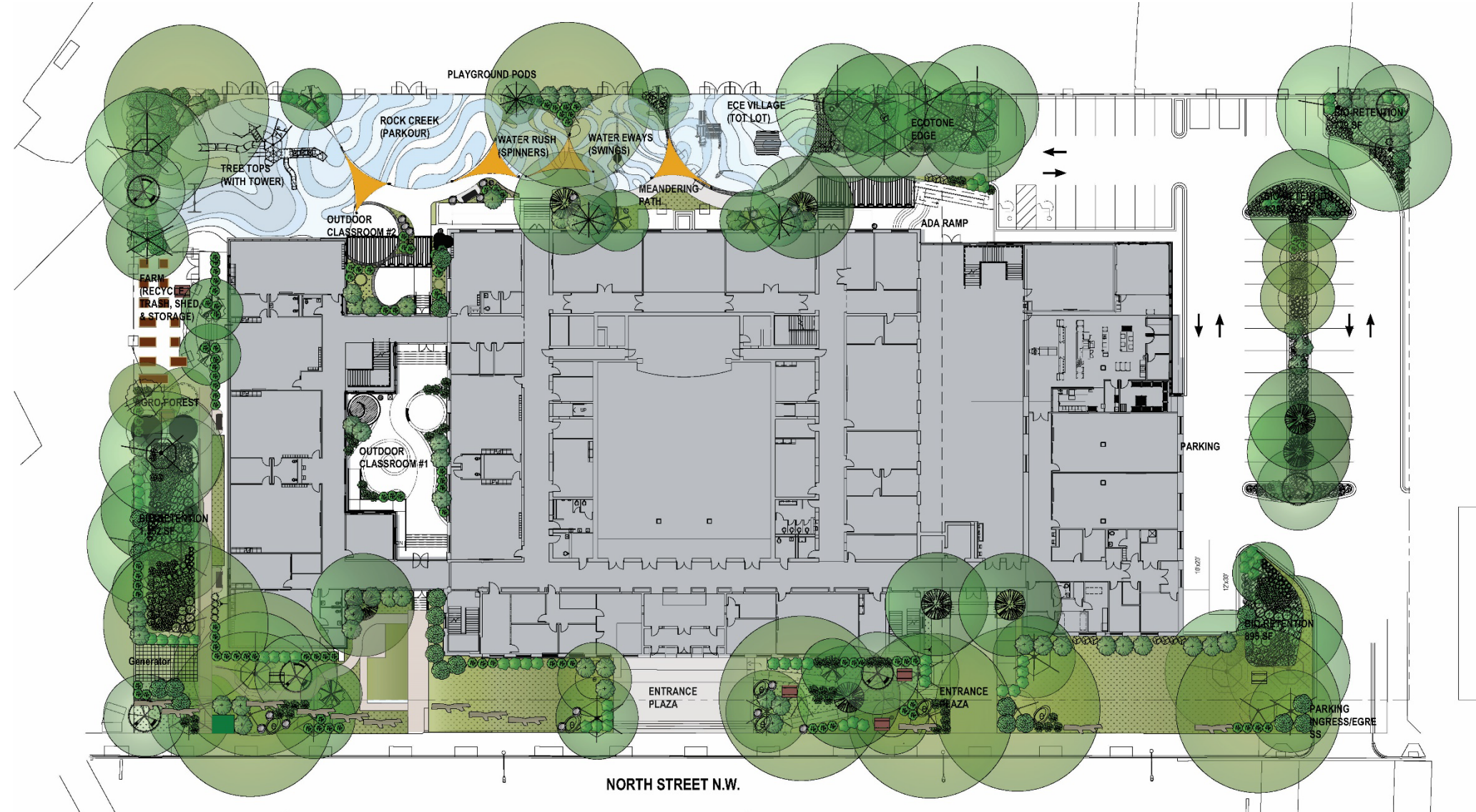
MODERNIZATION, EXPANSION, AND ADDITION





# PROJECT SCOPE

SITUATED ON SITE





# PROJECT SCOPE

## FLOOR PLANS

- Academic

Visual Arts

Physical Education

Health Services

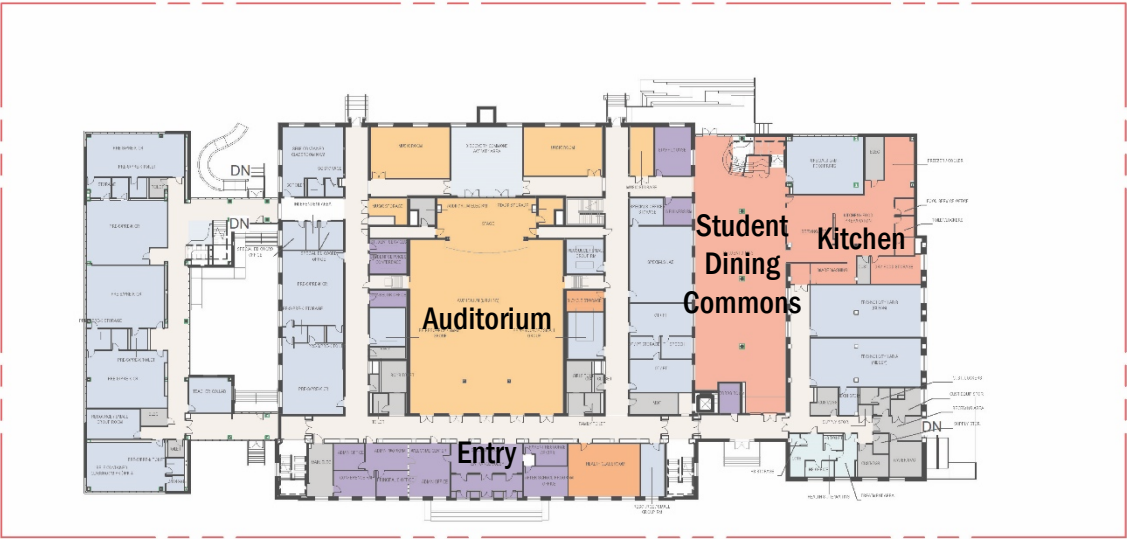
Building Services
- Library

Performing Arts

Administration

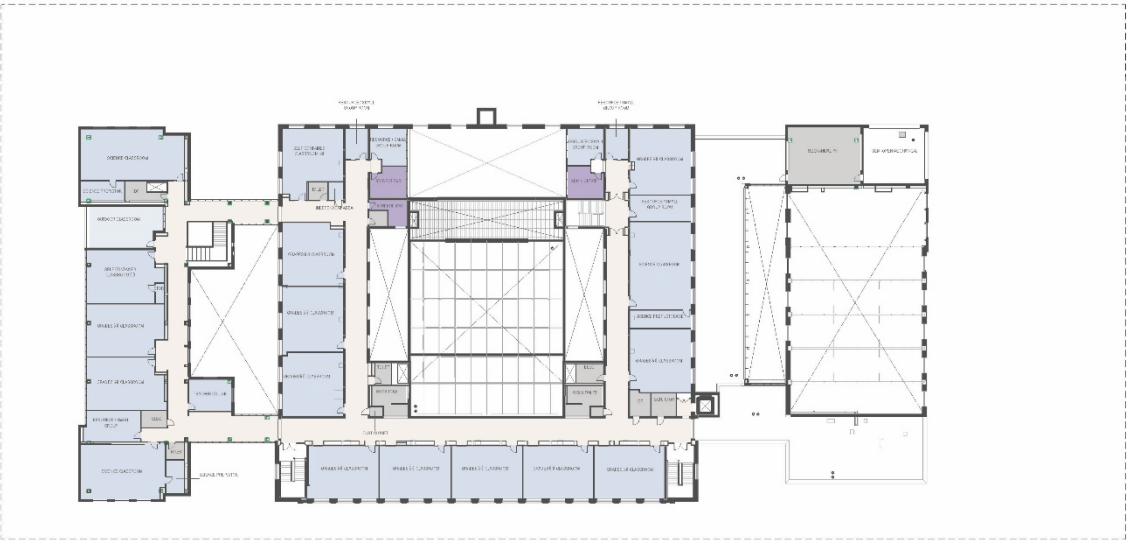
Student Dining

Circulation

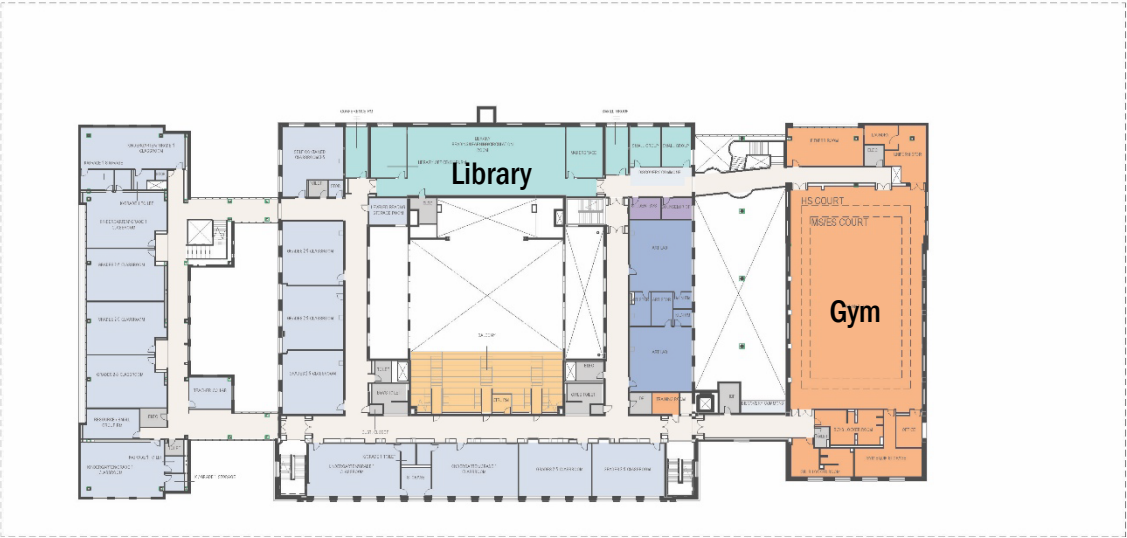


First Floor Plan

Property Line



Third Floor Plan



Second Floor Plan

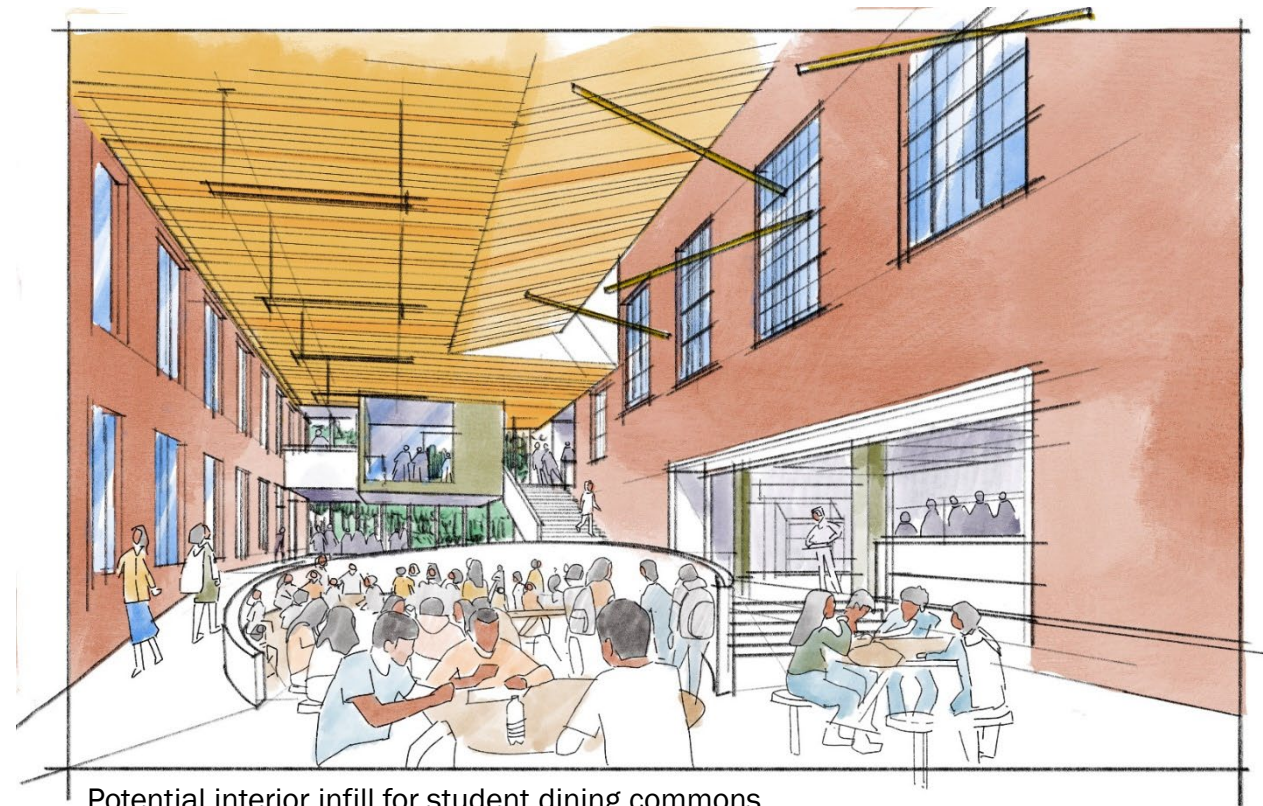


# PROJECT SCOPE

PRESERVE EXISTING EXTERIOR FACADES IN NEW INTERIOR SPACES

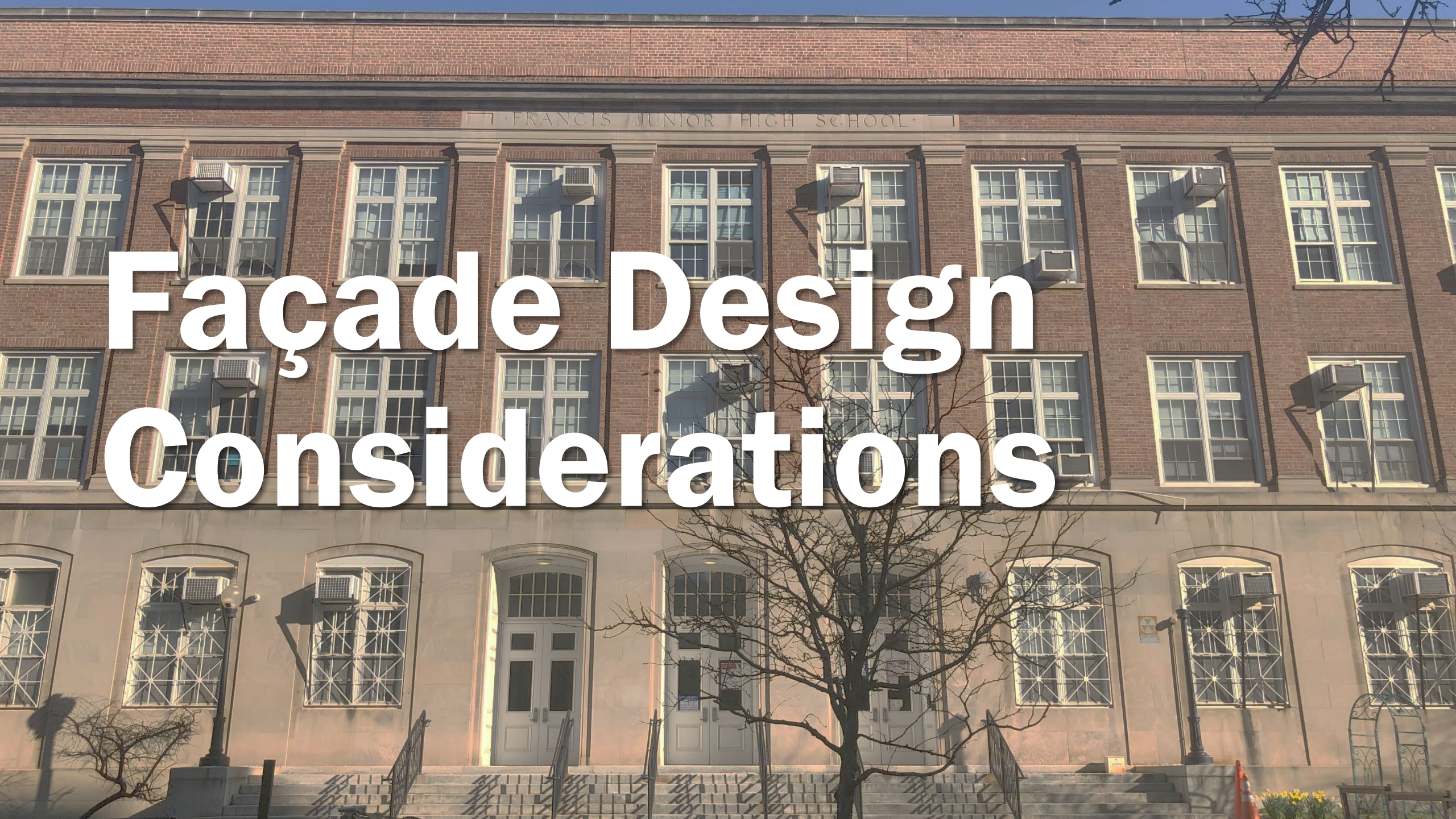


Existing exterior service courtyard



Potential interior infill for student dining commons





# Façade Design Considerations



# EXISTING BUILDING

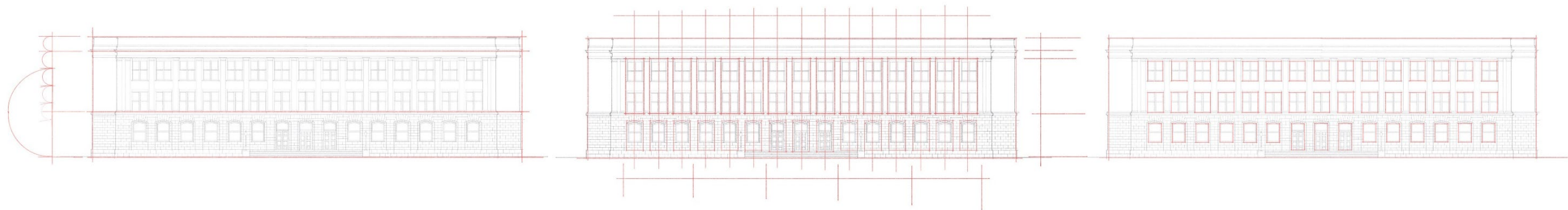
## OVERALL COMPOSITION OF HISTORIC FACADES





# EXISTING BUILDING

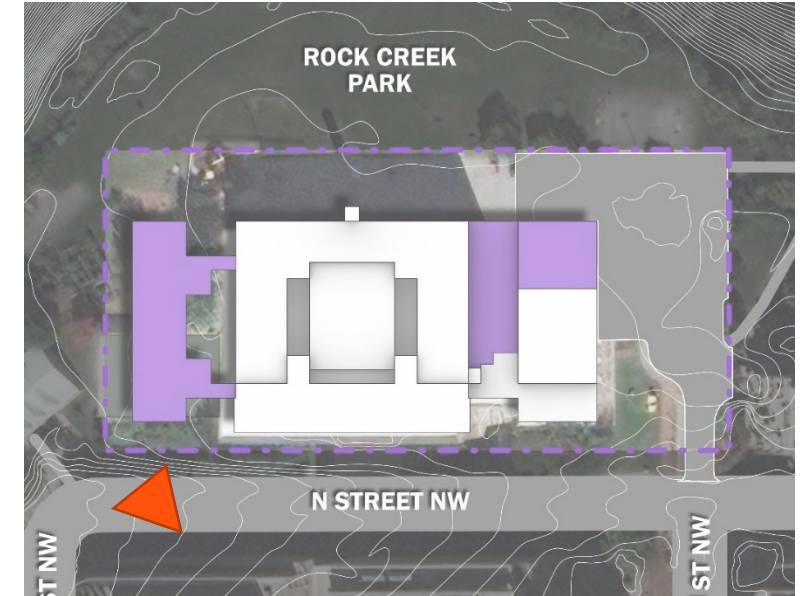
## SOUTH ENTRY FAÇADE STUDIES





# VIGNETTES

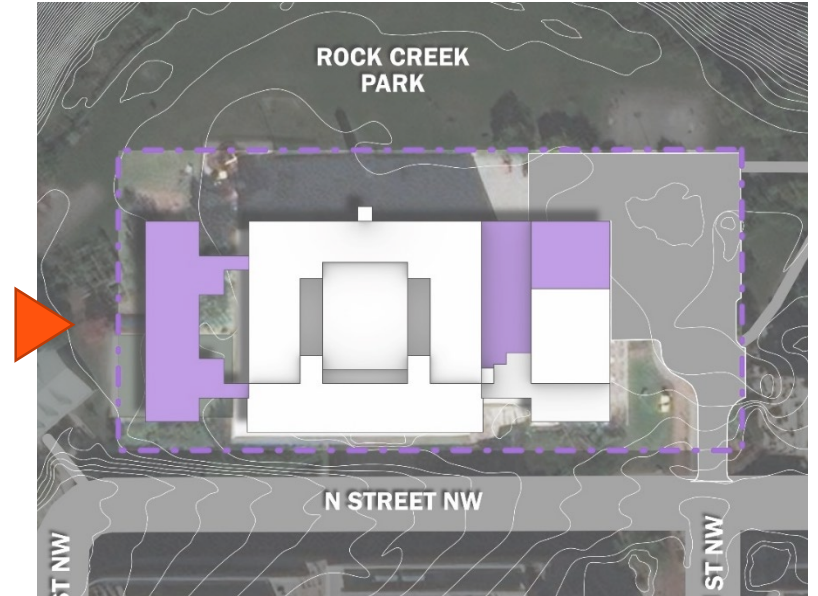
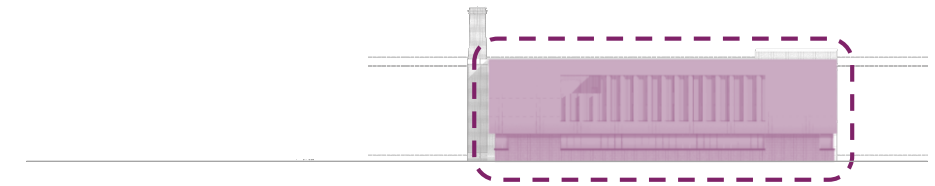
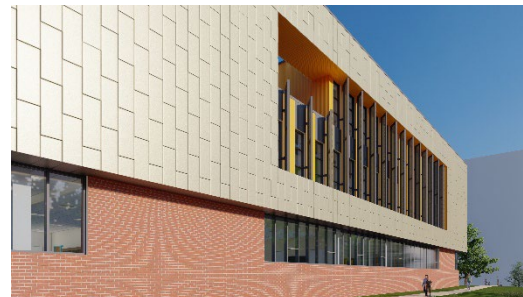
## WEST ADDITION – SOUTH ENTRY





# VIGNETTES

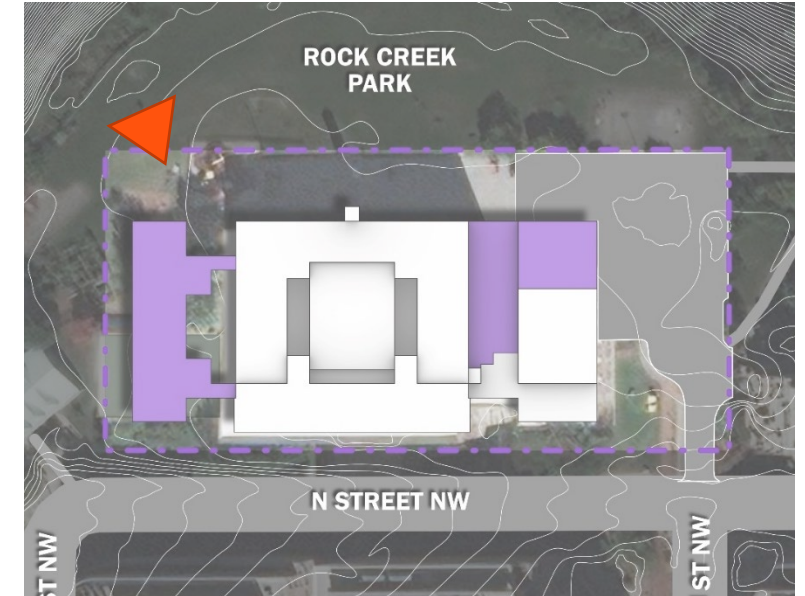
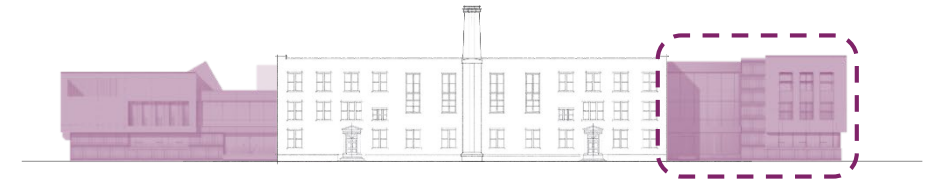
## WEST ADDITION – WEST FACADE





# VIGNETTE

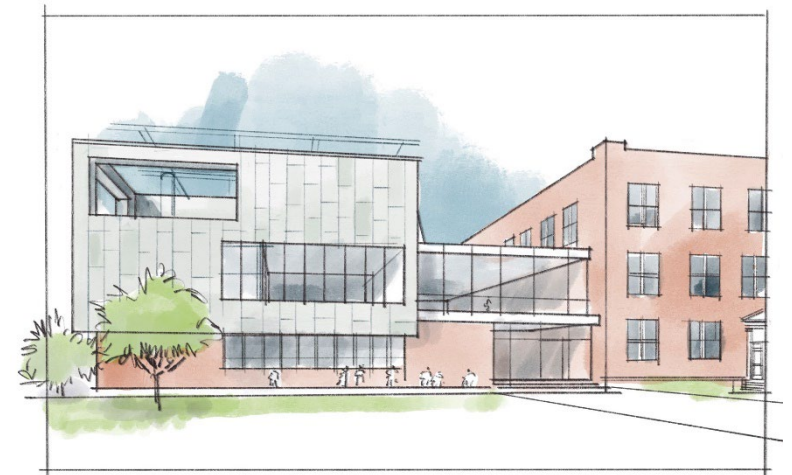
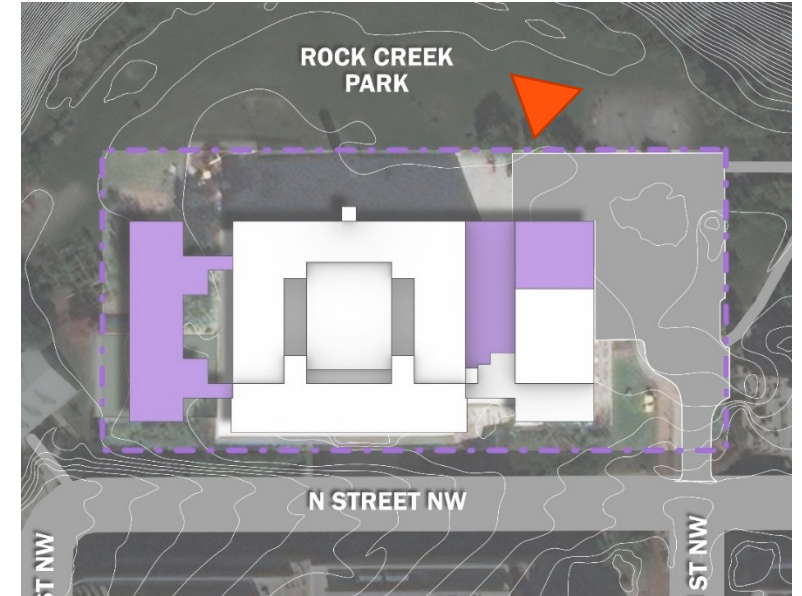
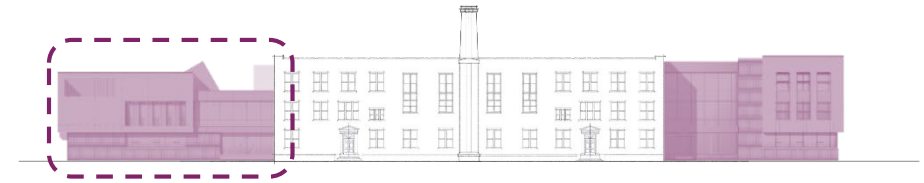
## WEST ADDITION – NORTH FACADE





# VIGNETTE

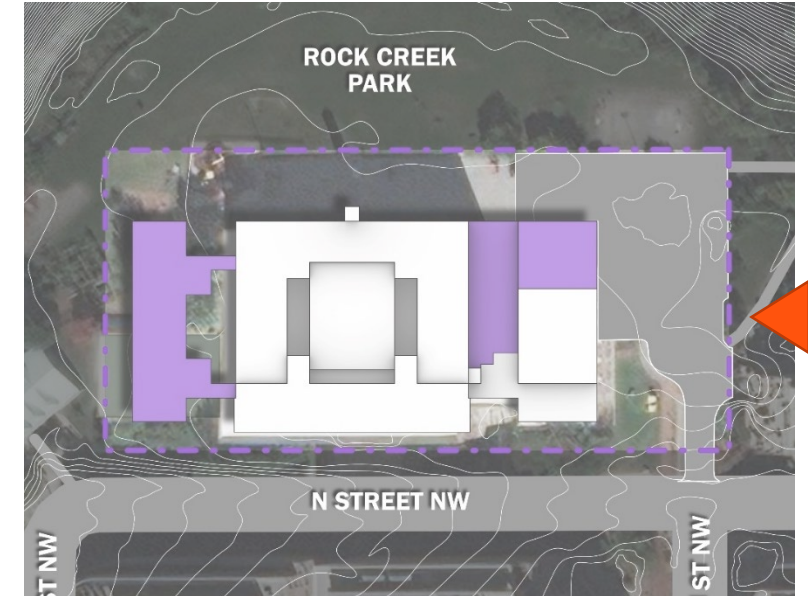
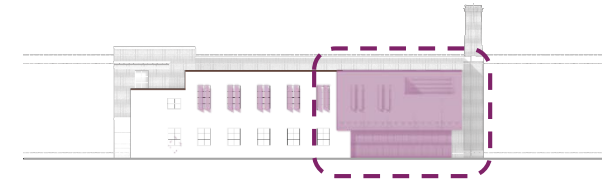
## EAST GYM EXTENSION AND ATRIUM – NORTH ENTRY





# VIGNETTE

## EAST GYM EXTENSION AND ATRIUM – EAST FACADE





# PROPOSED DESIGN

OVERALL COMPOSITION – SOUTHEAST VIEW





# PROPOSED DESIGN

OVERALL COMPOSITION – SOUTHWEST VIEW





# PROPOSED DESIGN

OVERALL COMPOSITION – NORTHWEST VIEW





# PROPOSED DESIGN

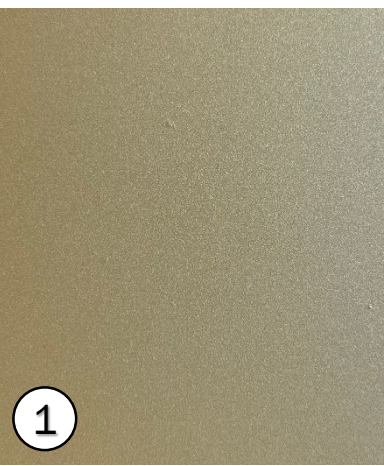
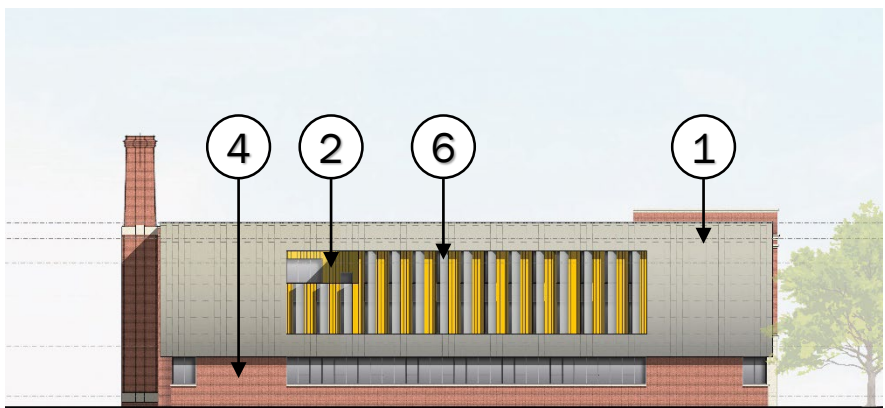
OVERALL COMPOSITION – NORTHEAST VIEW



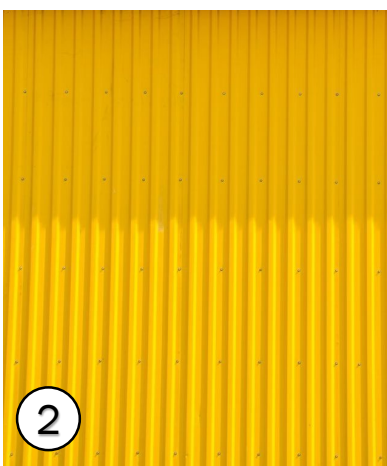


# MATERIALS

RESPECT HISTORIC STRUCTURES WITH NEW MATERIAL CHOICES



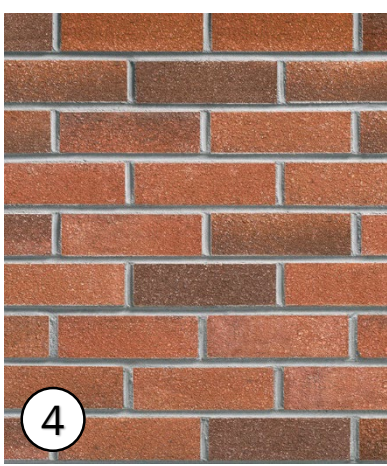
Flat Lock Panels



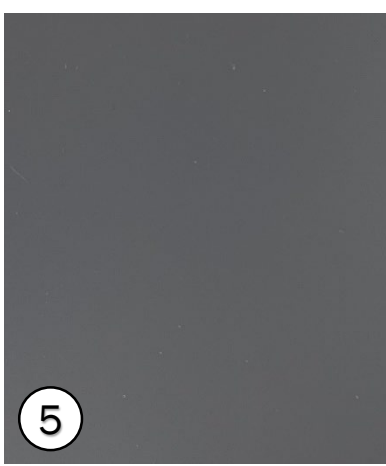
Corrugated Panel



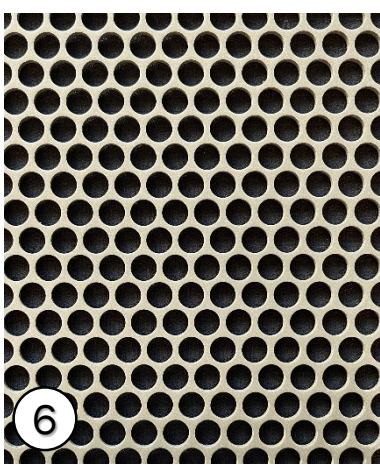
Aluminum Panel



Masonry



Curtain Wall, Storefront & Windows

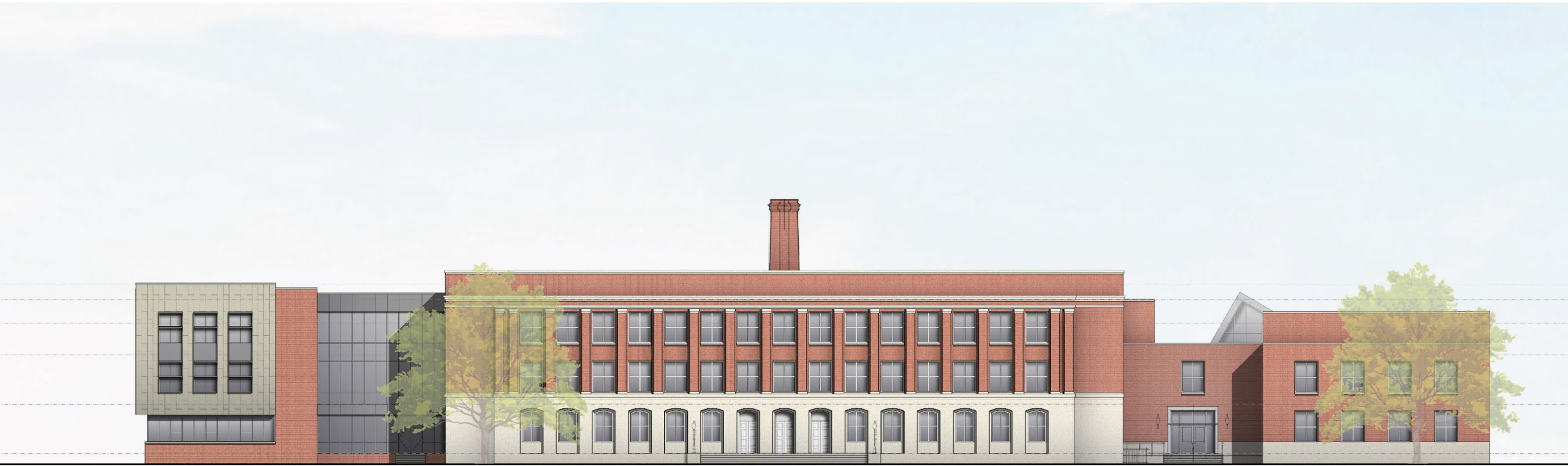


Perforated Screens



# ELEVATION

## SOUTH ENTRY FACADE





# ELEVATION

## WEST FACADE





# ELEVATION

## NORTH PARK FACADE





# ELEVATION

## EAST FACADE





