

# LOWER MANHATTAN COASTAL RESILIENCY PROJECT – BATTERY

East Coast Memorial

October 29, 2021



Stantec



# Lower Manhattan Coastal Resiliency projects





# Existing East Coast Memorial





# Existing East Coast Memorial





# Existing East Coast Memorial





# Existing East Coast Memorial





# Existing East Coast Memorial





# Existing East Coast Memorial





# Existing East Coast Memorial



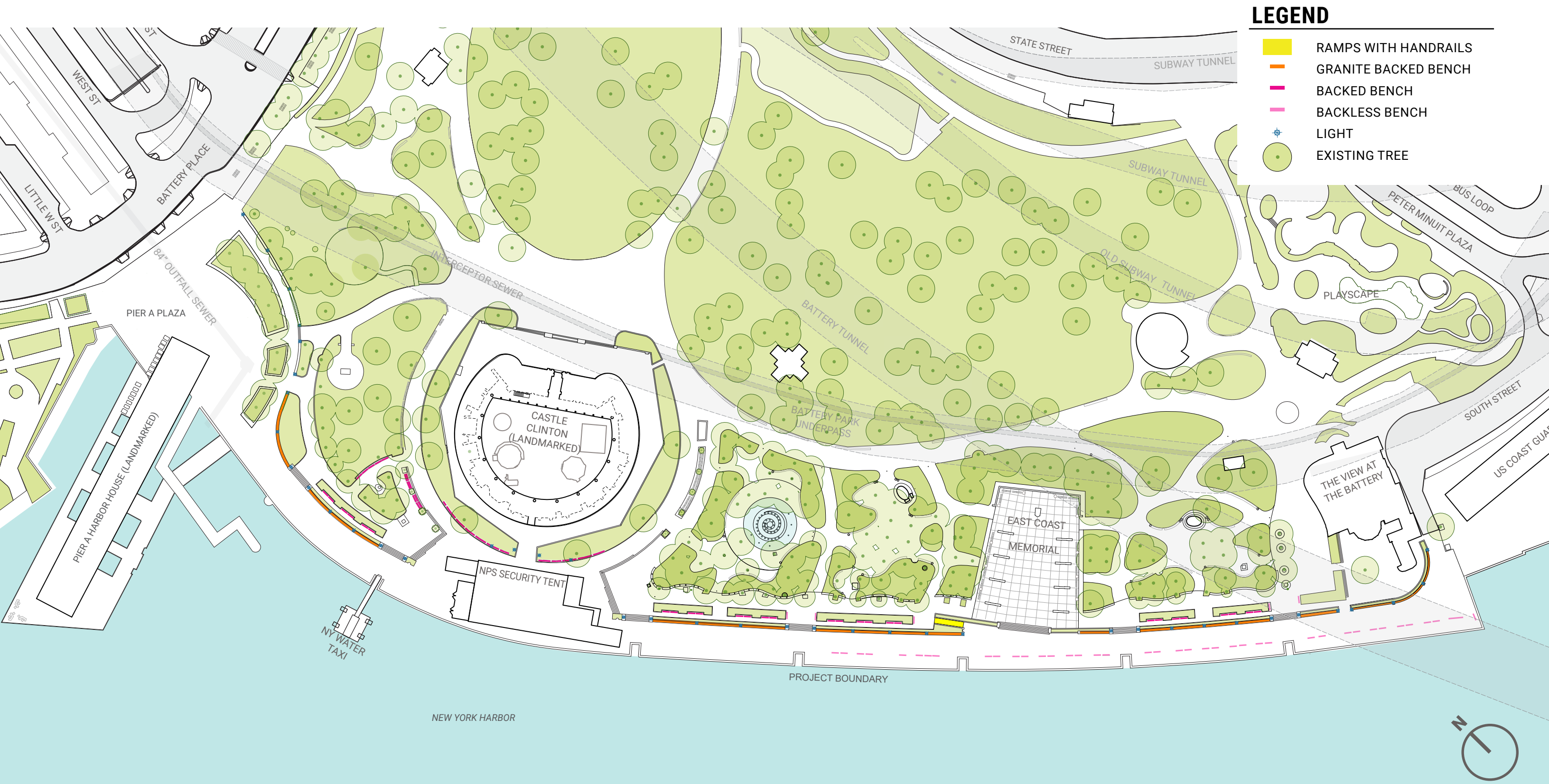


# Existing East Coast Memorial



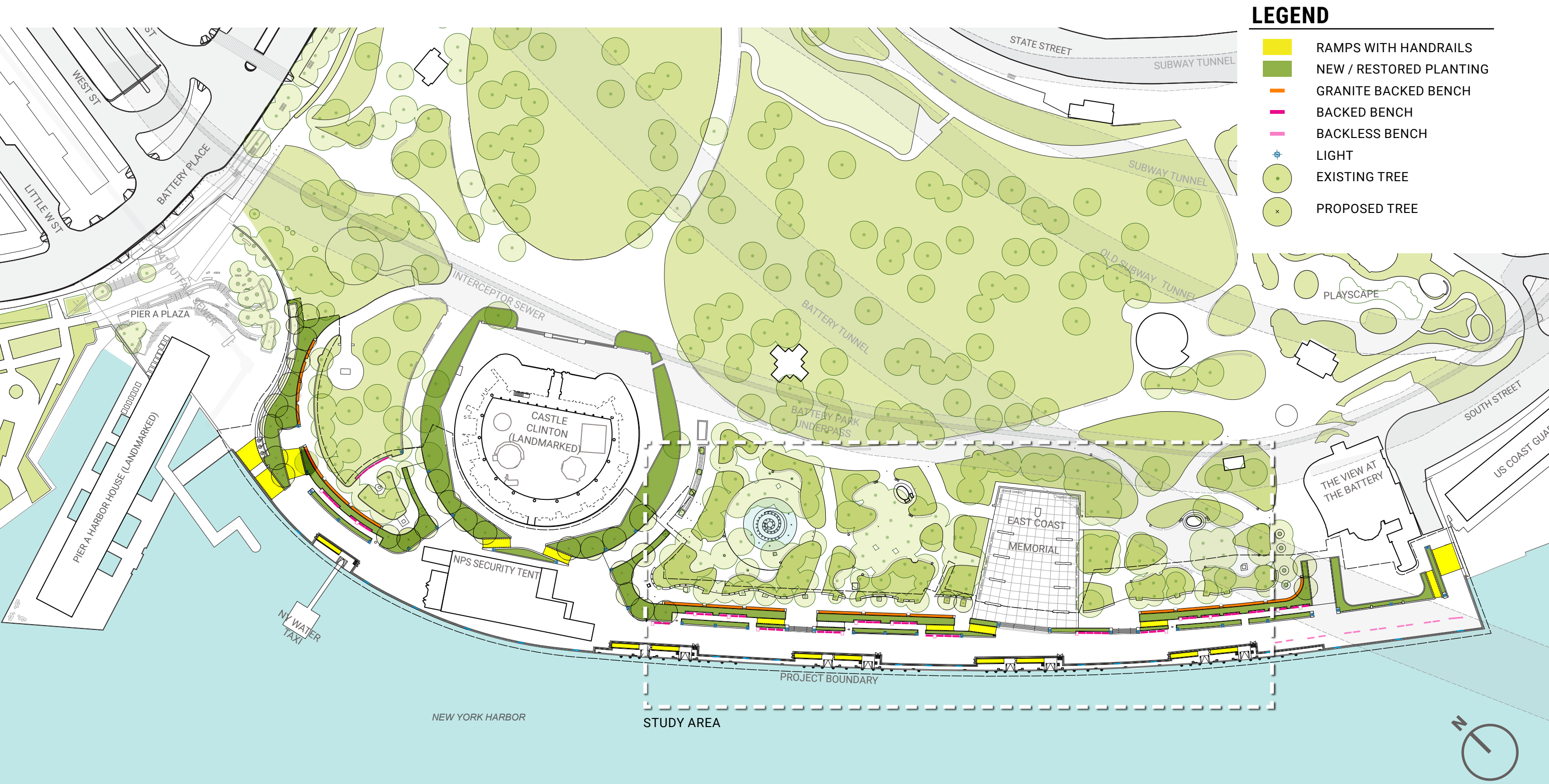


# Existing Condition





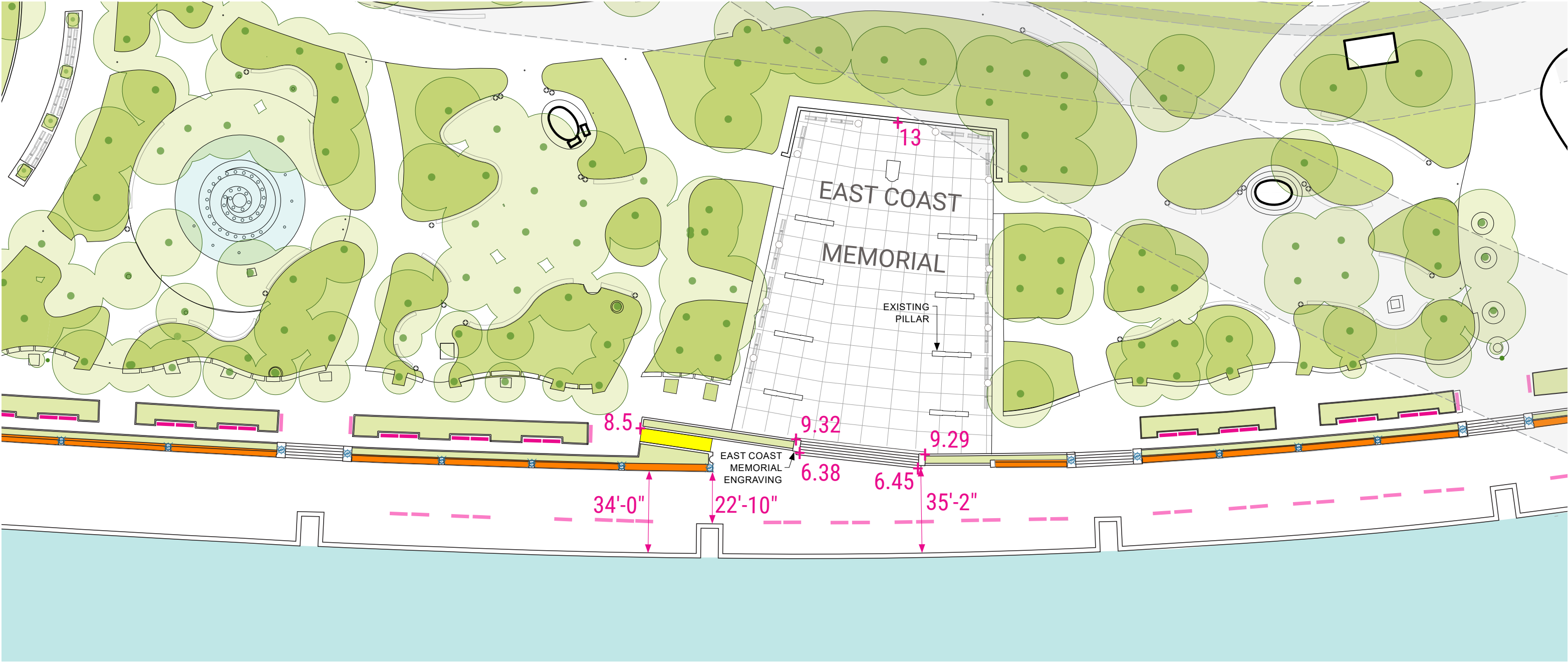
# Proposed Design



- LEGEND**
- RAMPS WITH HANDRAILS
  - NEW / RESTORED PLANTING
  - GRANITE BACKED BENCH
  - BACKED BENCH
  - BACKLESS BENCH
  - LIGHT
  - EXISTING TREE
  - PROPOSED TREE



# Existing Condition

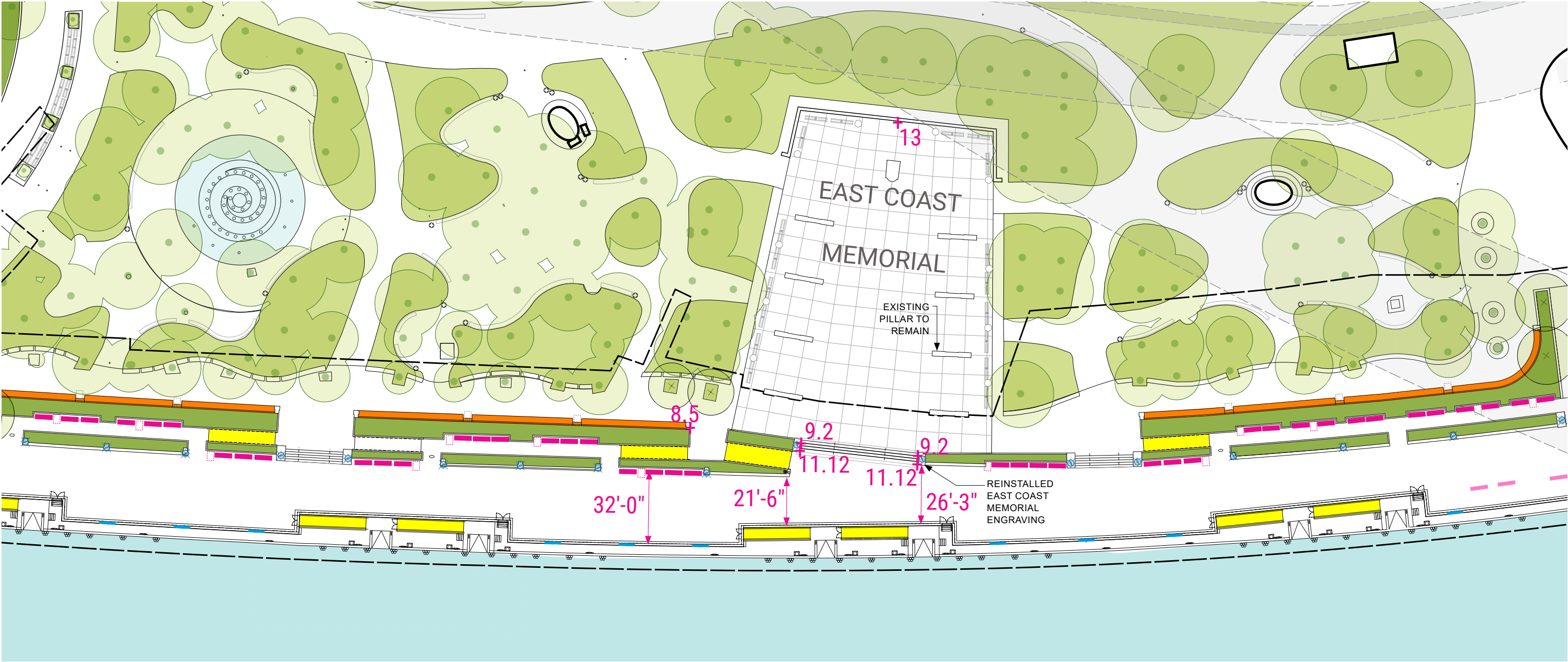


## LEGEND

- |                      |                           |                         |               |
|----------------------|---------------------------|-------------------------|---------------|
| GRANITE BACKED BENCH | EAST COAST MEMORIAL LIGHT | RAMPS WITH HANDRAILS    | EXISTING TREE |
| BACKED BENCH         | RIVERSIDE LUMINAIRE LIGHT | NEW / RESTORED PLANTING |               |
| BACKLESS BENCH       |                           |                         |               |



# Design Concept

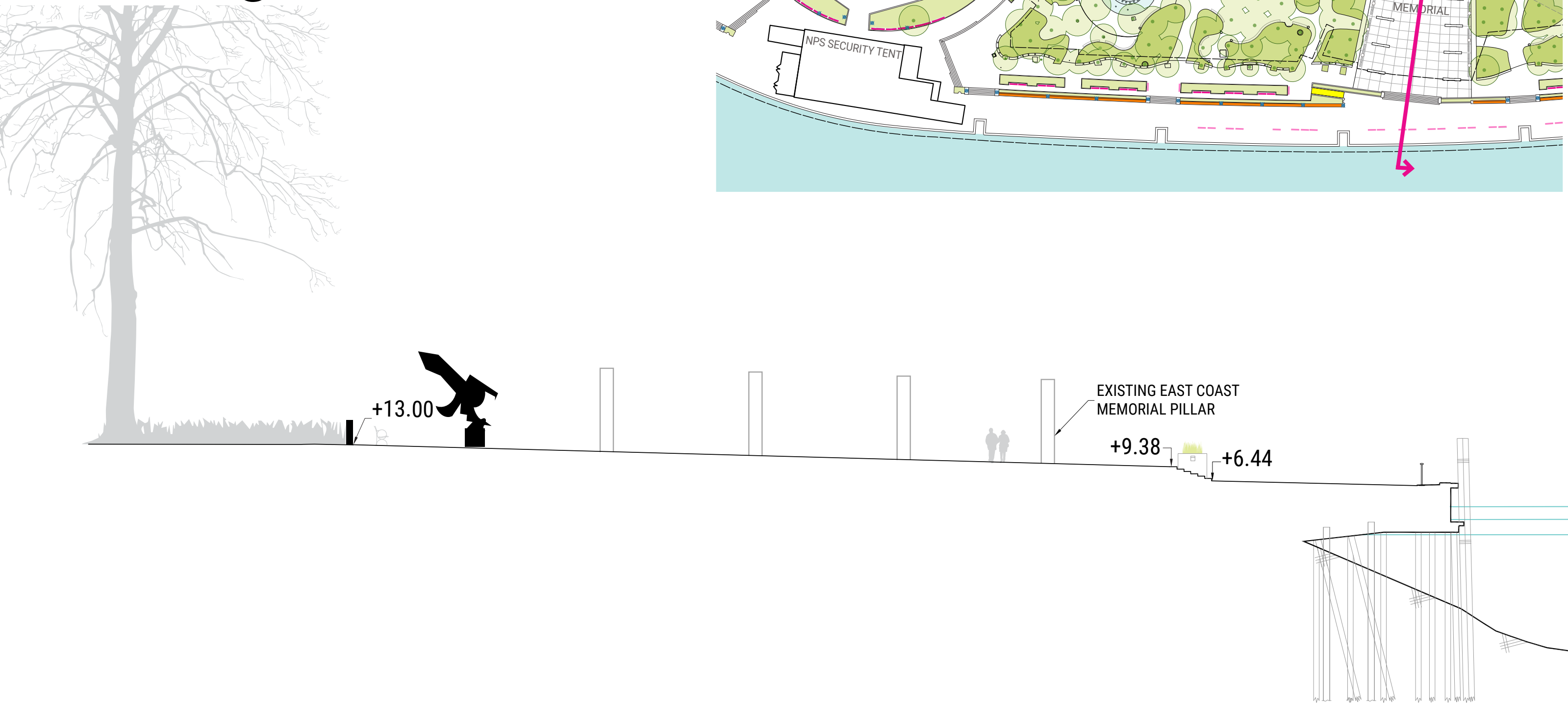


## LEGEND

- |                      |                             |                         |                 |
|----------------------|-----------------------------|-------------------------|-----------------|
| GRANITE BACKED BENCH | ○ EAST COAST MEMORIAL LIGHT | RAMPS WITH HANDRAILS    | ● EXISTING TREE |
| BACKED BENCH         | ⊕ RIVERSIDE LUMINAIRE LIGHT | NEW / RESTORED PLANTING | ⊗ PROPOSED TREE |
| BACKLESS BENCH       |                             |                         |                 |



# Existing Section





# Proposed Section

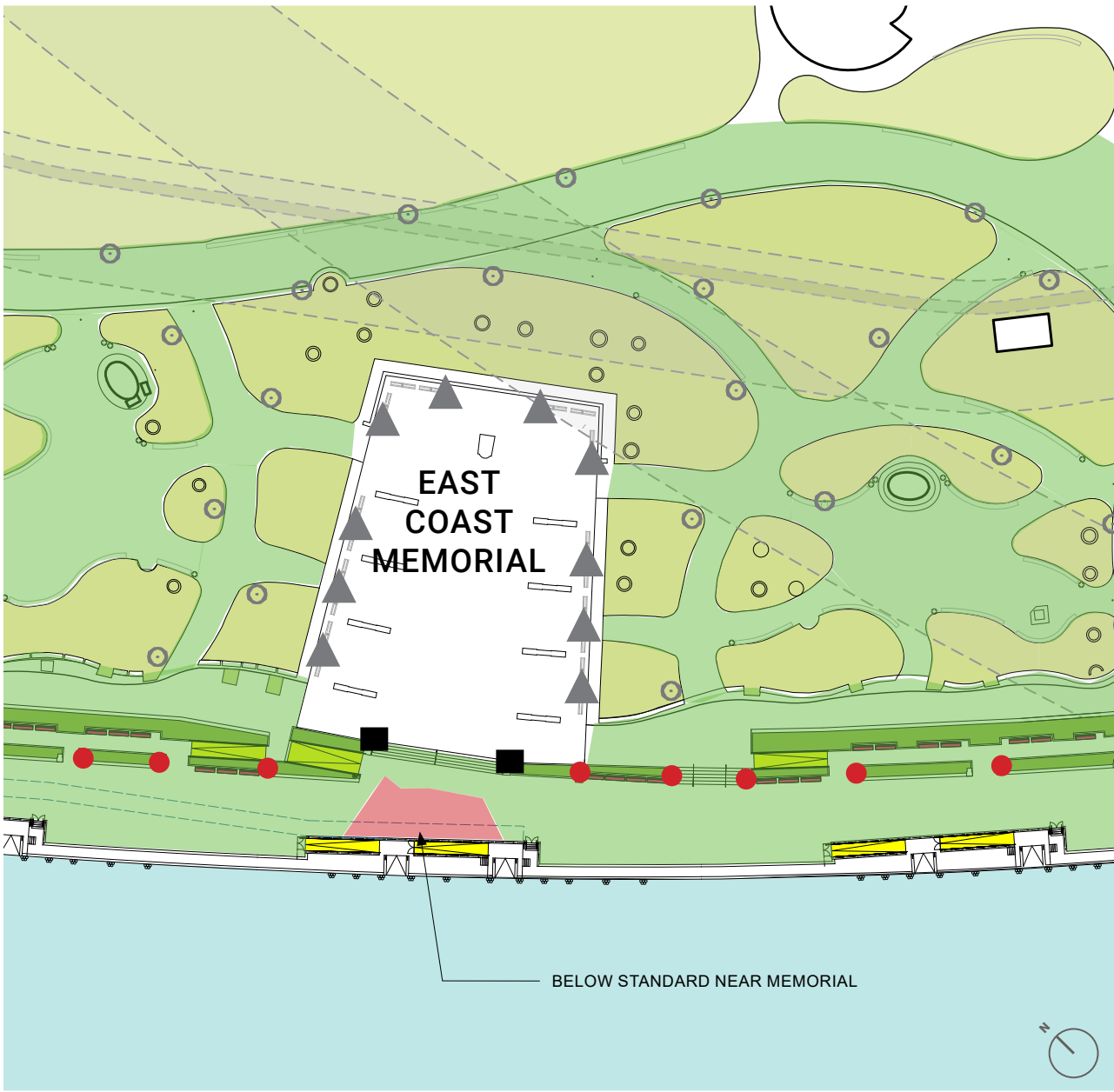




# East Coast Memorial Proposed Lighting

## INSUFFICIENT LIGHT LEVELS USING EXISTING RECESSED LIGHTING

PHOTOMETRICS AS CURRENTLY DESIGNED









## PROPOSED NEW LIGHTING

REPLACE RECESSED LIGHT FIXTURE WITH NEW LIGHT POLES ON PEDESTALS



### LEGEND

- |   |  |  |
|---|--|--|
|  ACCEPTABLE LIGHT LEVELS     |  EXISTING RIVERSIDE LUMINAIRE ON B-POLE (NYCDOT MAINTAINED) |  PROPOSED RIVERSIDE LUMINAIRE ON B-POLE (NYCDOT MAINTAINED) |
|  BELOW-STANDARD LIGHT LEVELS |  EXISTING EAST COAST MEMORIAL LAMPPOST (NYCDOT MAINTAINED)  |  RECESSED LIGHT FIXTURE (NYCDPR OWNED AND MAINTAINED)       |



# East Coast Memorial Existing Lighting

**RECESSED LIGHT FIXTURE**  
(NYCDPR OWNED AND MAINTAINED)

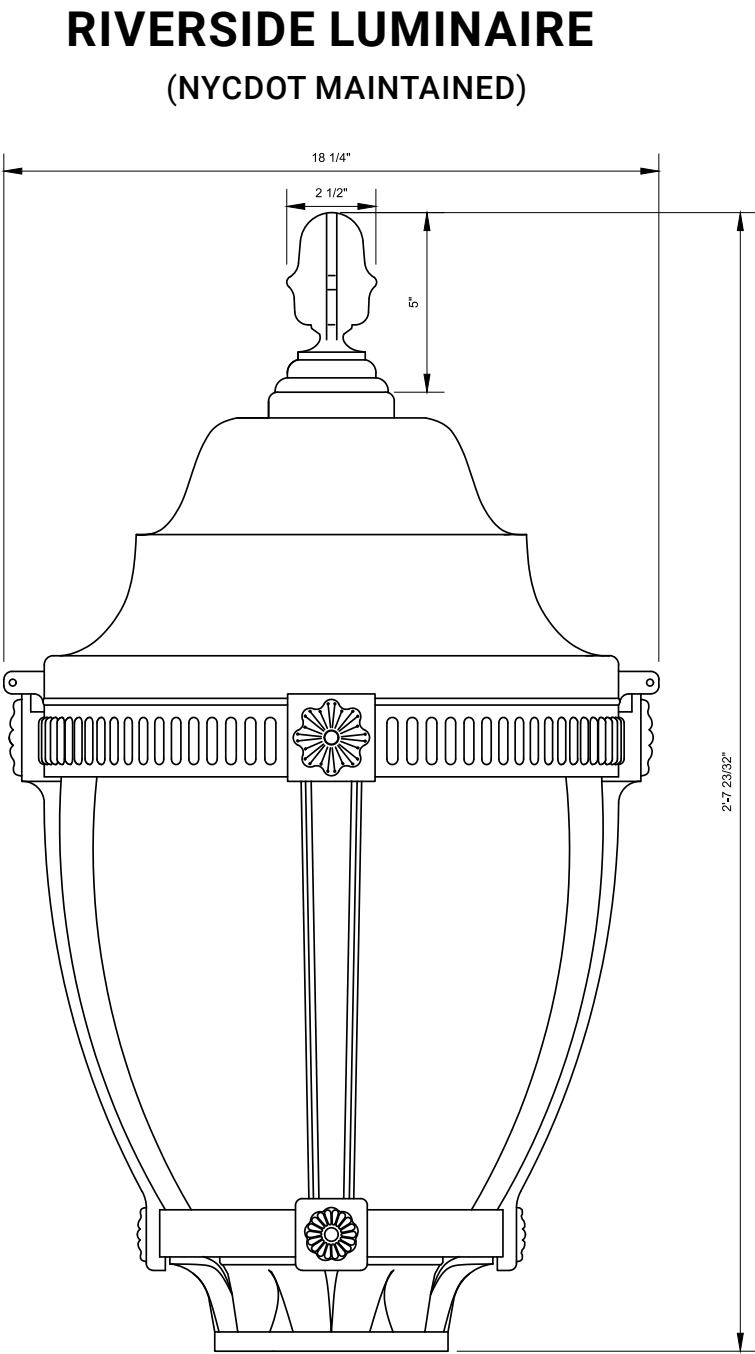


**EXISTING EAST COAST  
MEMORIAL LAMPPOST**  
(NYCDOT MAINTAINED)





# Existing Wharf Front Lighting / Proposed East Coast Memorial Lighting



### SLR-LED Riverside

*Luminaires: Tulips - Struts*

**Luminaire Height:** 29 1/2" to 38 1/2"  
**Diameter:** 18"

Overlooking the broad Hudson River is Manhattan's Riverside Drive, lit along its three mile length by this variant on the tulip contour luminaire. Decorated in bas-relief around its dome, and sporting a prominent finial, Riverside is the luminaire of choice for New York City's many park areas. The tulip contour and restrained bas-relief detailing are unique, distinctive and suggestive of an older, quieter era.

Shown with 10 ft. cast iron pole. Catalog #: SCI-B-S-10'

High-strength cast aluminum structure and polycarbonate or acrylic globe. Several decorative bases are available for appropriate mating with a variety of ornamental posts.

SLR-LED utilizes the most current solid state technology to deliver high lumen output, exceptional light distribution, superior visual comfort, extended service life, and energy reduction.

*For Ordering Information see reverse.*

### SLR-LED Riverside

**Sentry Electric LLC**  
185 Buffalo Avenue, Freeport, New York, 11520  
Telephone: 516.379.4660 Fax: 516.378.0624  
www.sentrylighting.com info@sentrylighting.com

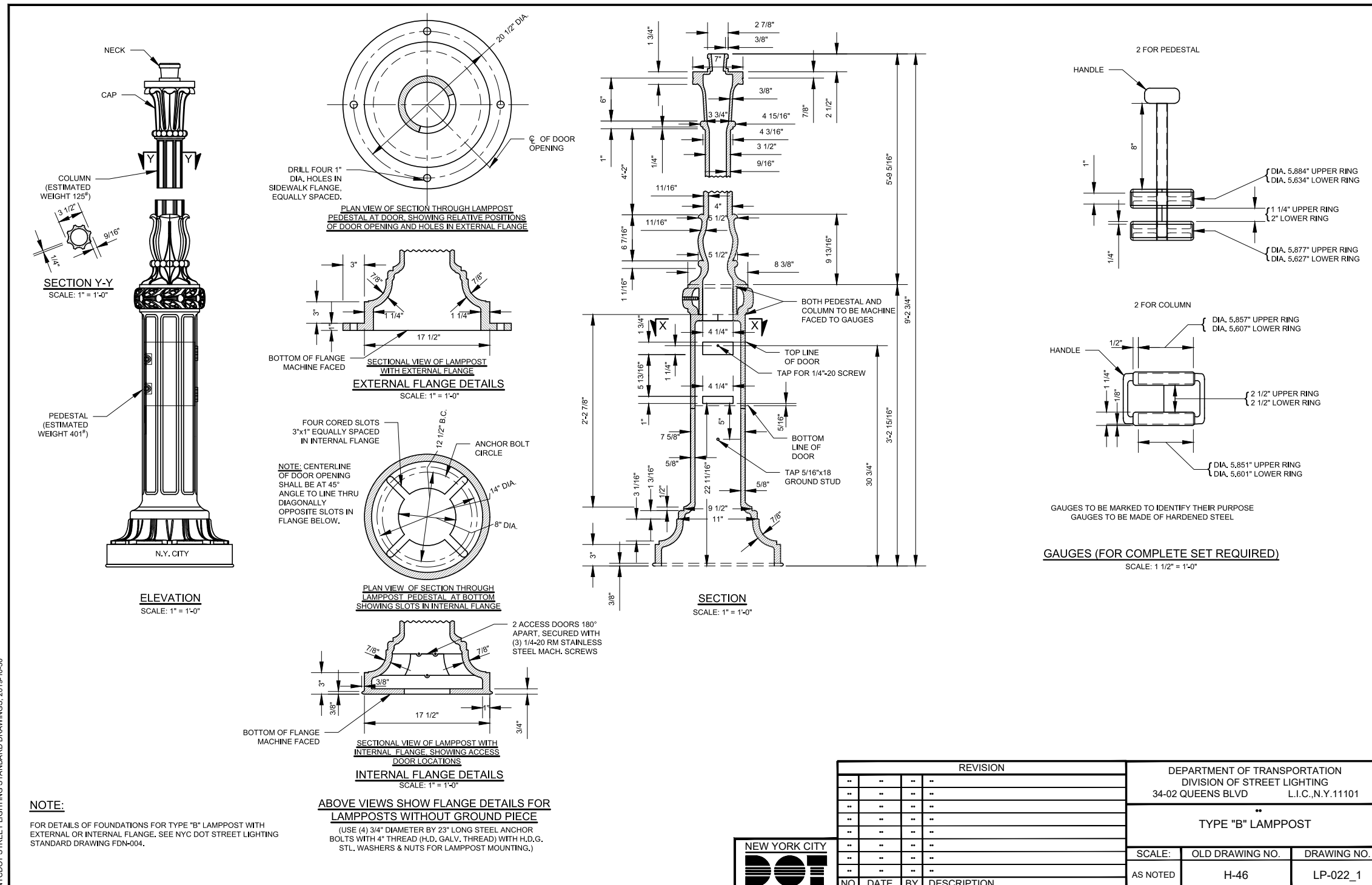
L-12-5  
© 2020



# Existing Wharf Front Lighting / Proposed East Coast Memorial Lighting

# RIVERSIDE LUMINAIRE

(NYCDOT MAINTAINED)





# Existing Wharf





# Proposed Design with Lights in View



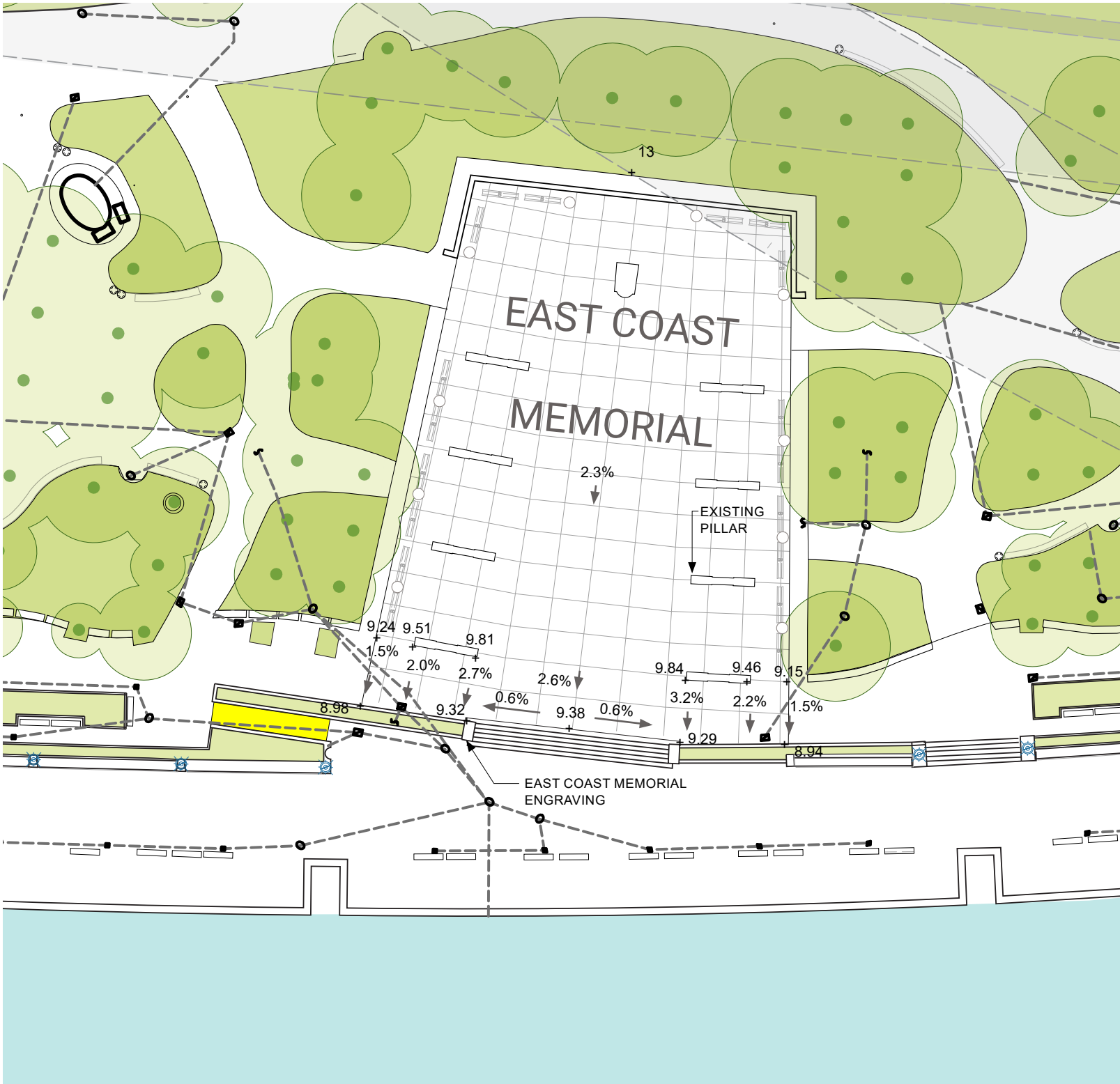


# Night View





# Existing Drainage



LEGEND

RAMPS WITH HANDRAILS

EXISTING PLANTING

EXISTING STORM SEWER

EXISTING DRAINAGE STRUCTURES

EXISTING TREE

RIVERSIDE LUMINAIRE

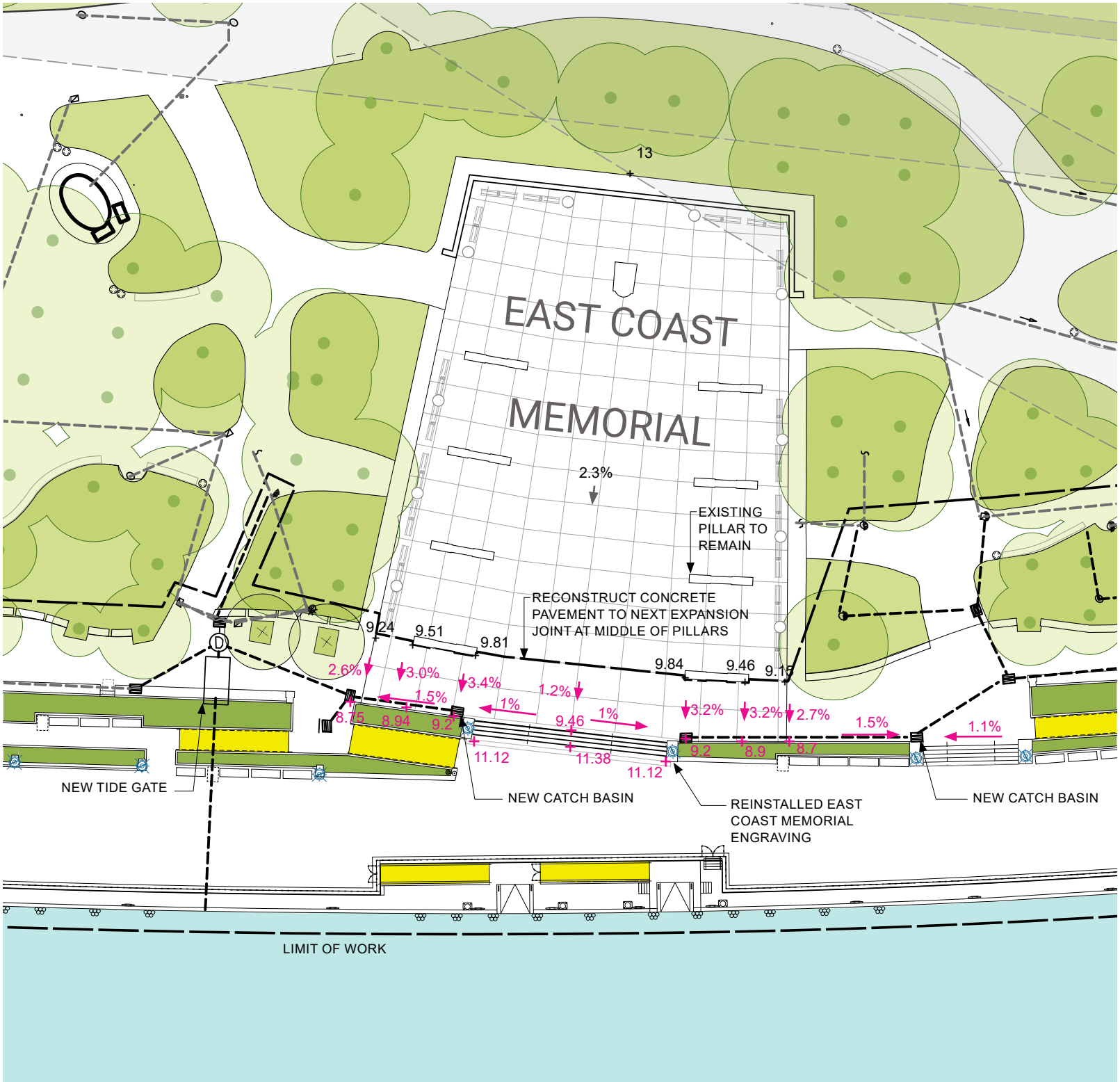
EAST COAST MEMORIAL LIGHT



# Proposed Drainage Design

- Proposed cross slopes at base of East Coast Memorial range from 1.2%-3.4%
- Longitudinal slope is 1%
- Limit of construction to meet expansion joint at edge of pillars to accommodate consistent grades at the base of the memorial
- Runoff from the East Coast Memorial collected via catch basins at base of stairs (similar to existing)

## CATCH BASIN EXAMPLE



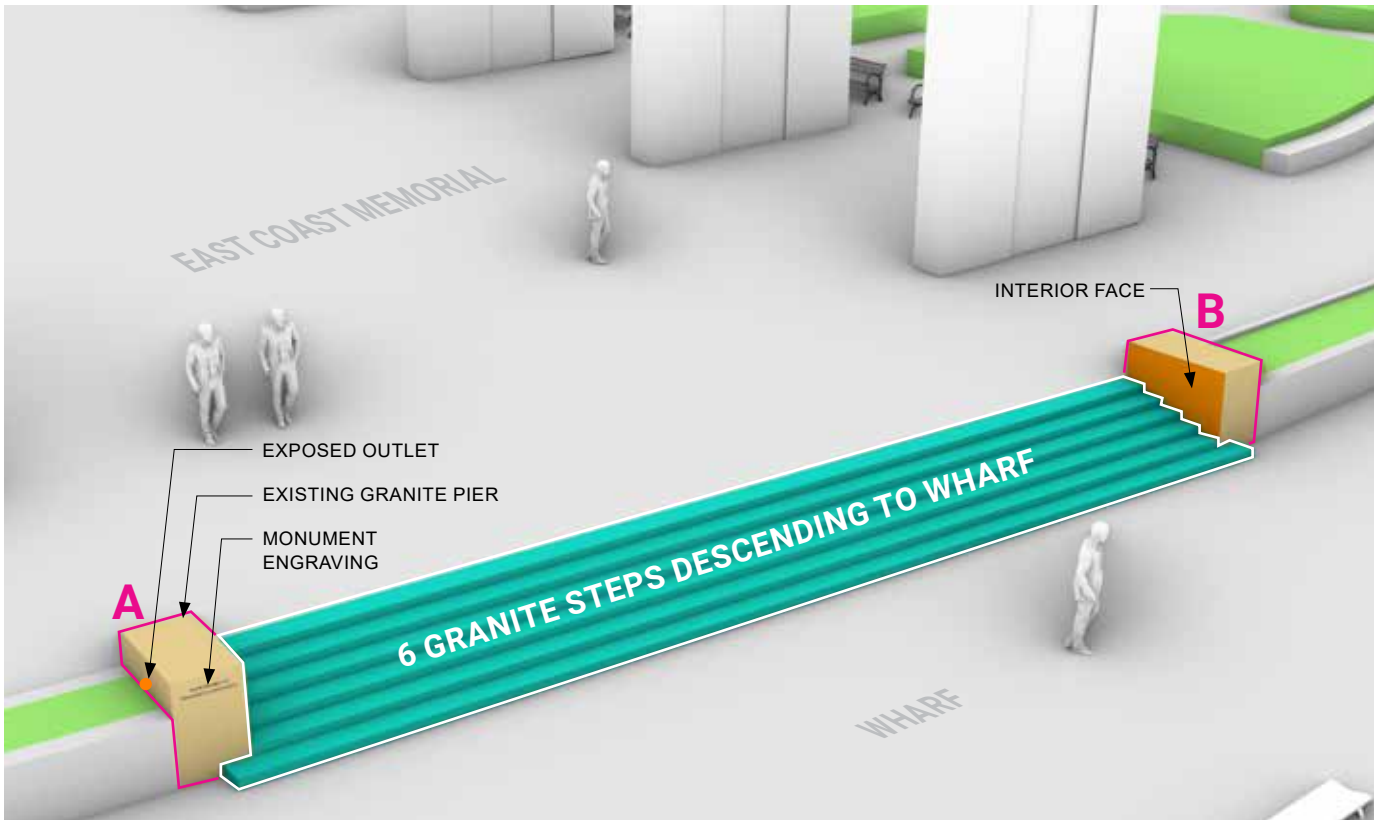
## LEGEND

- RAMPS WITH HANDRAILS
- EXISTING PLANTING
- NEW / RESTORED PLANTING
- EXISTING STORM SEWER
- PROPOSED STORM SEWER
- PROPOSED CATCH BASIN
- MANHOLE AND TIDE GATE
- EXISTING TREES
- PROPOSED TREES
- RIVERSIDE LUMINAIRE
- EAST COAST MEMORIAL LIGHT

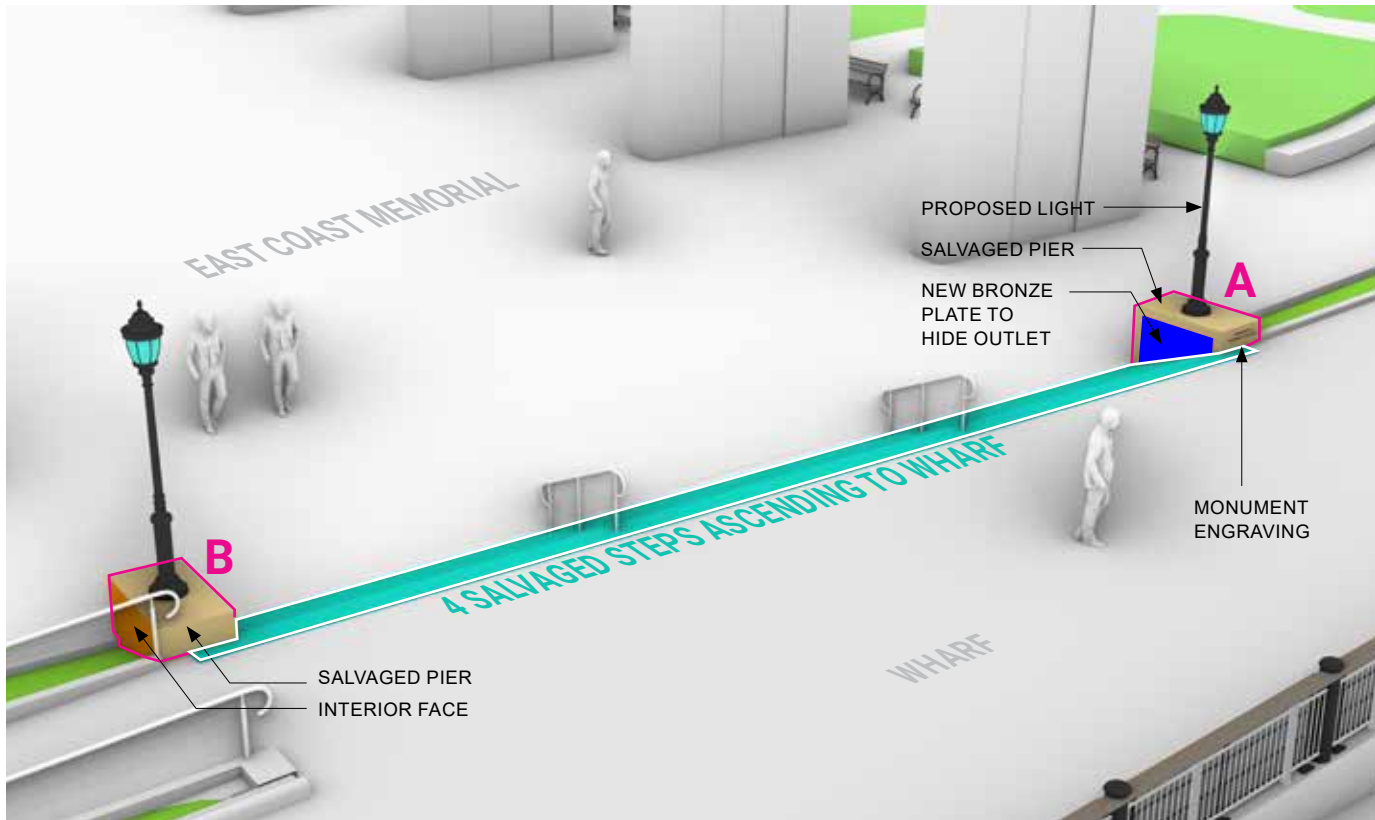


# Materiality

EXISTING STEPS

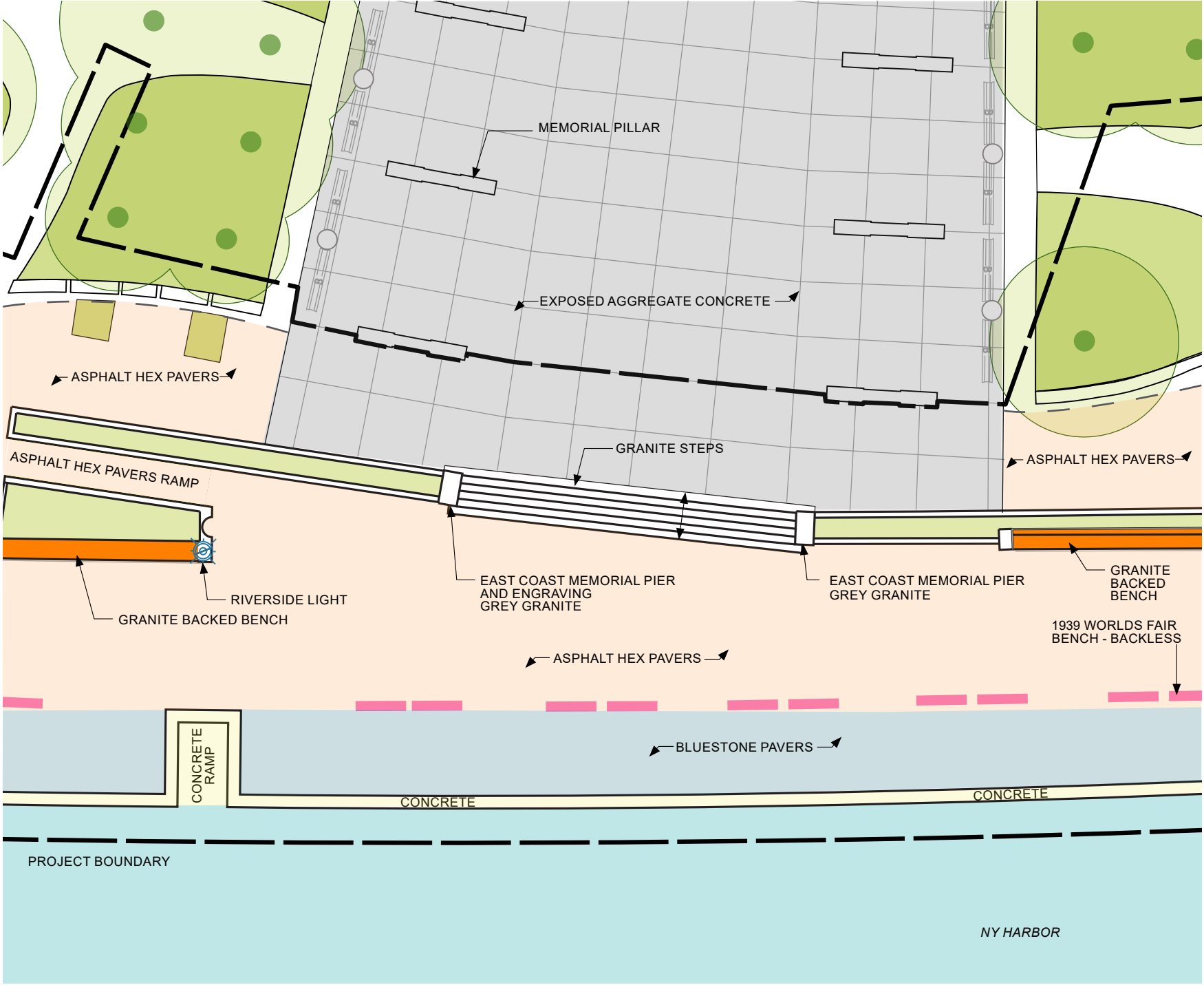


PROPOSED STEPS



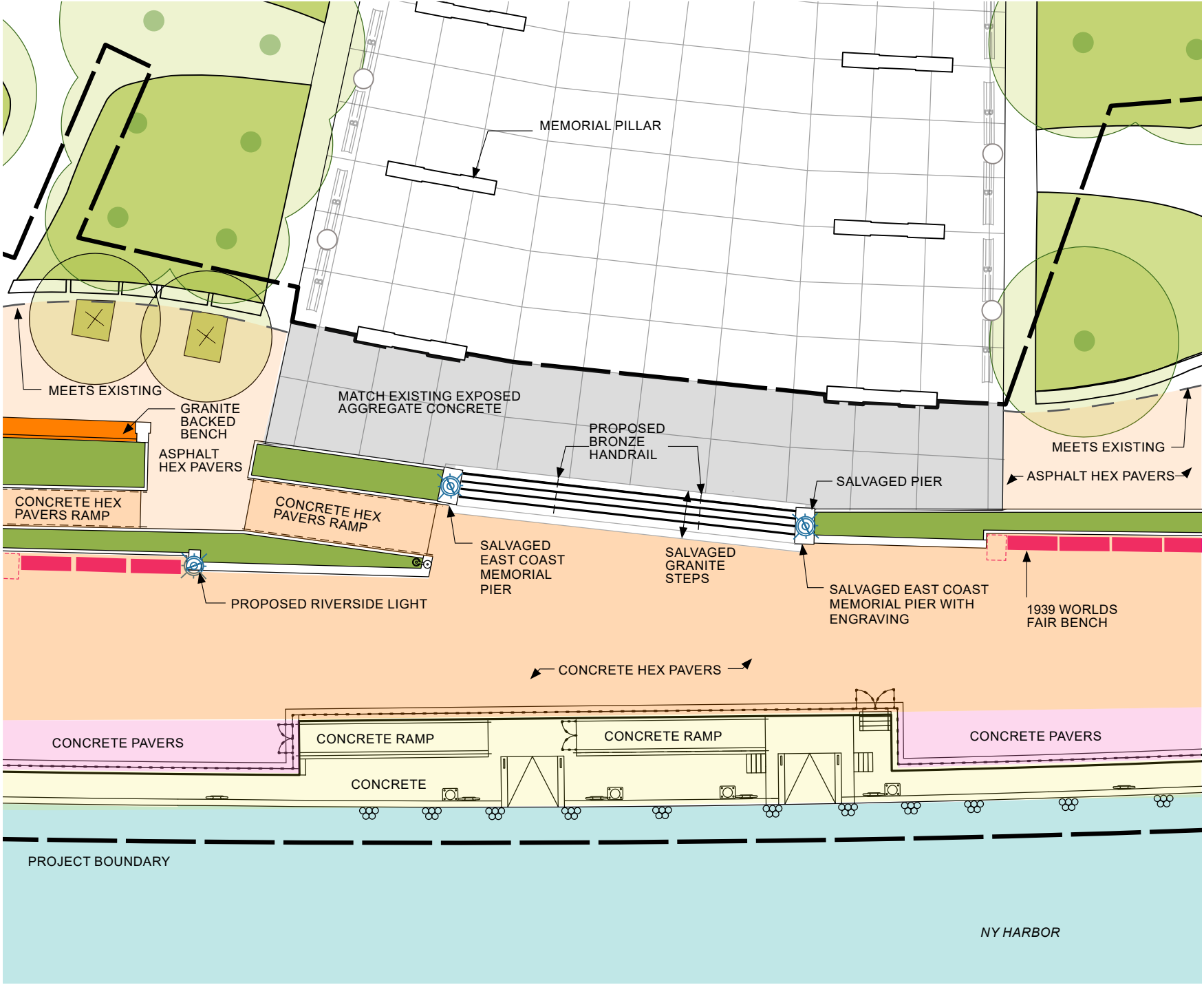


# Existing Materials





# Proposed Materials





# East Coast Memorial



Existing



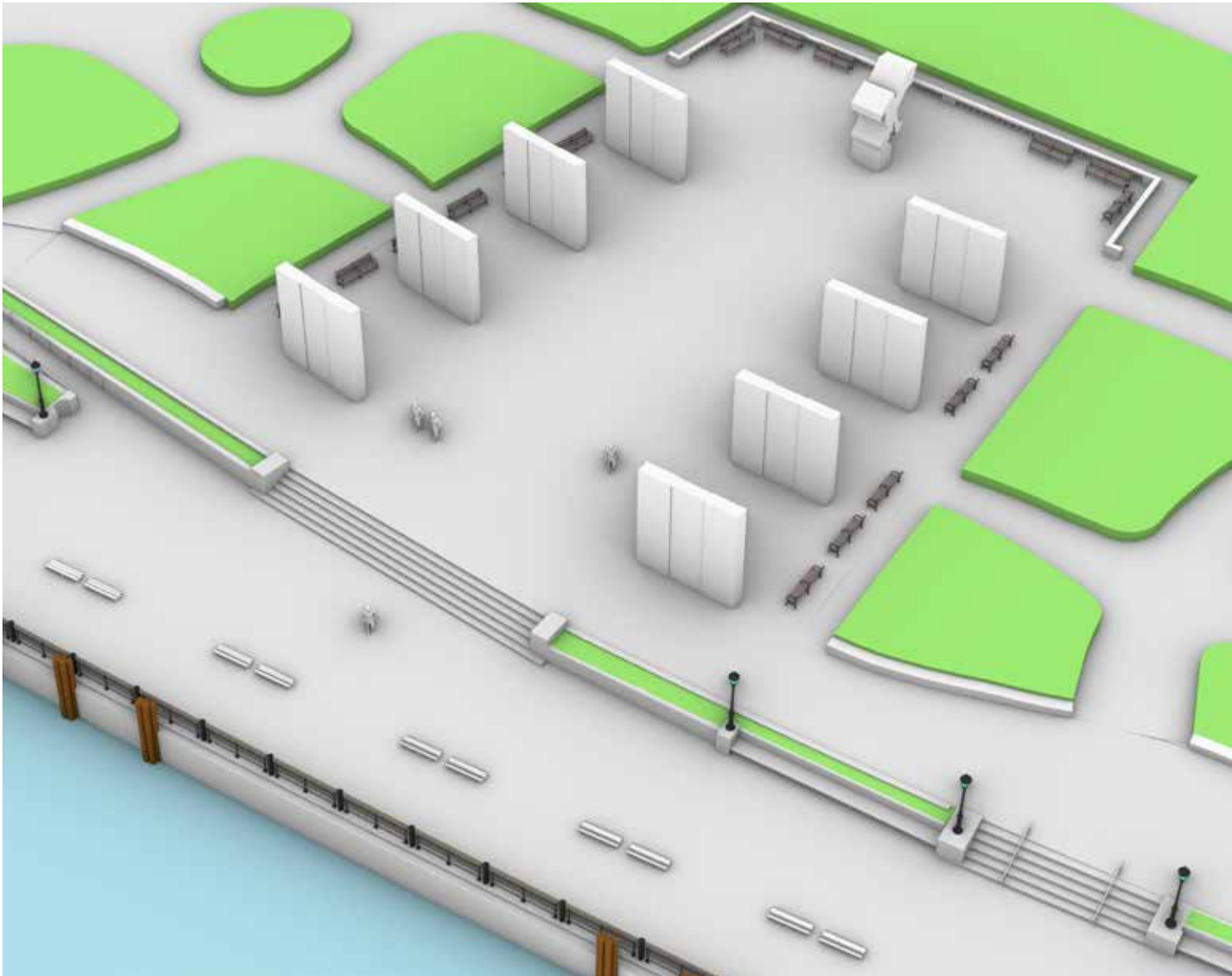
Proposed

LEGEND

PLANTING



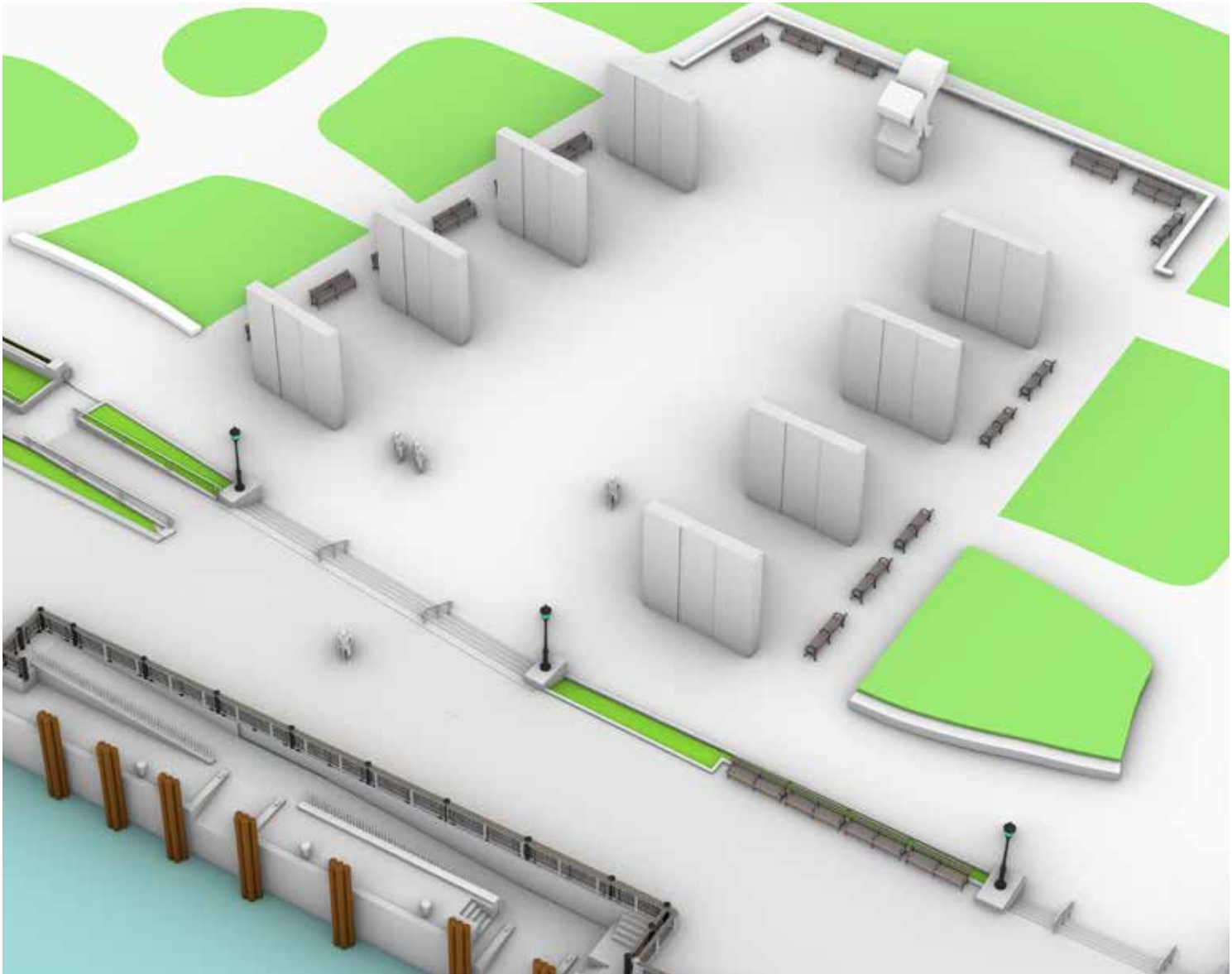
# East Coast Memorial



Existing

LEGEND

PLANTING



Proposed