

PRESENTATION TO THE US COMMISSION OF FINE ARTS

National Bonsai & Penjing Museum Concept Plan, USNA

September 3, 2020

REED HILDERBRAND TRAHAN ARCHITECTS



PROJECT STATEMENT

Introduction
Location /Context
Existing Museum
Project Goals

MUSEUM MASTER PLAN

Illustrative Plan
Principles for Organization
Vegetation
Relationship to Arboretum Core

GARDEN EXHIBITIONS

Principles
System Components
Architectural Site Plan
Chinese Exhibition
North American Exhibition

CONDITIONED STRUCTURES

International Exhibition & Stone Gallery
Administration/Classroom/Support Building

THREE DIMENSIONAL MODEL

PROJECT STATEMENT



PROJECT STATEMENT: INTRODUCTION



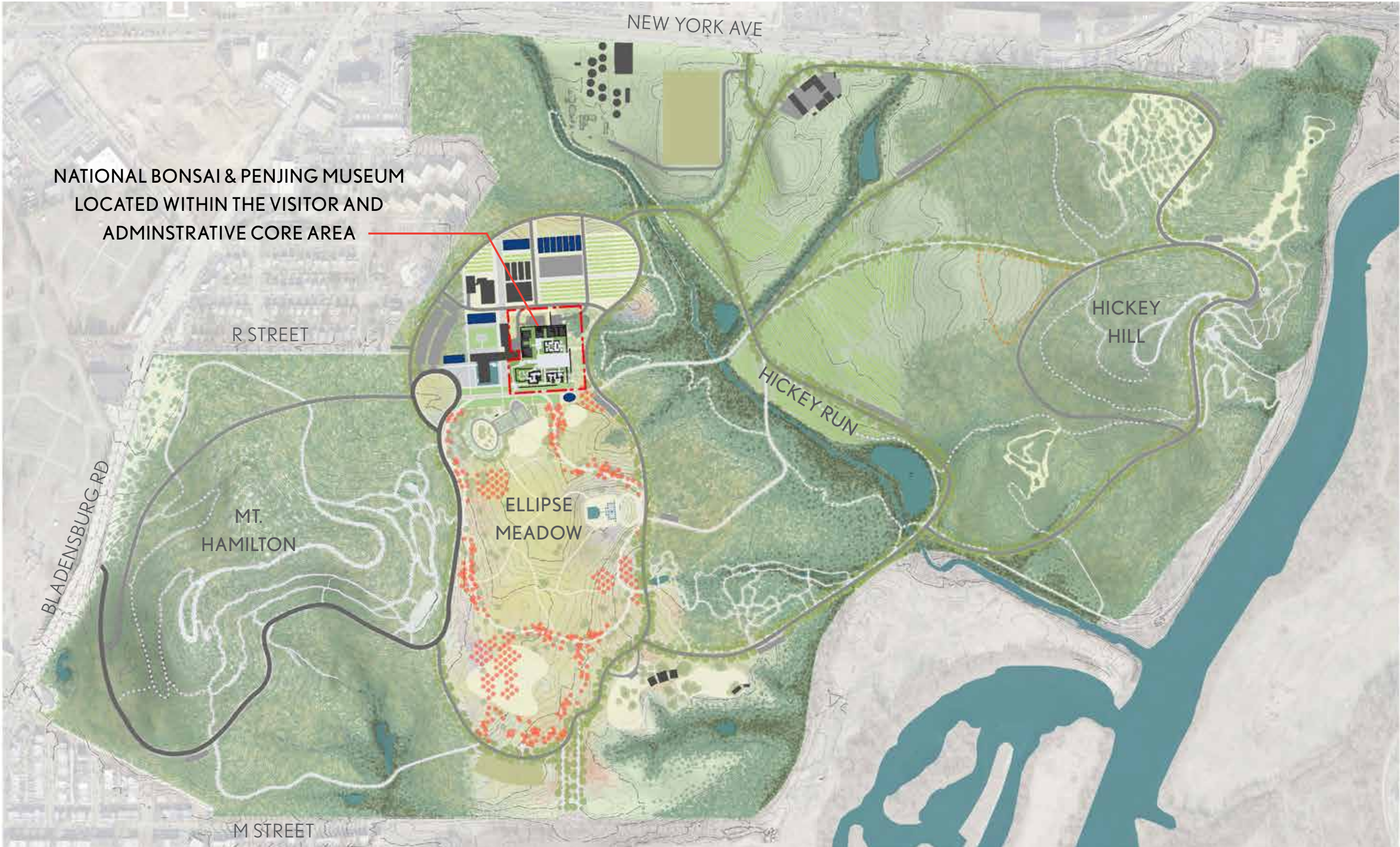
Existing complex

PROJECT STATEMENT: LOCATION WITHIN THE CAPITAL



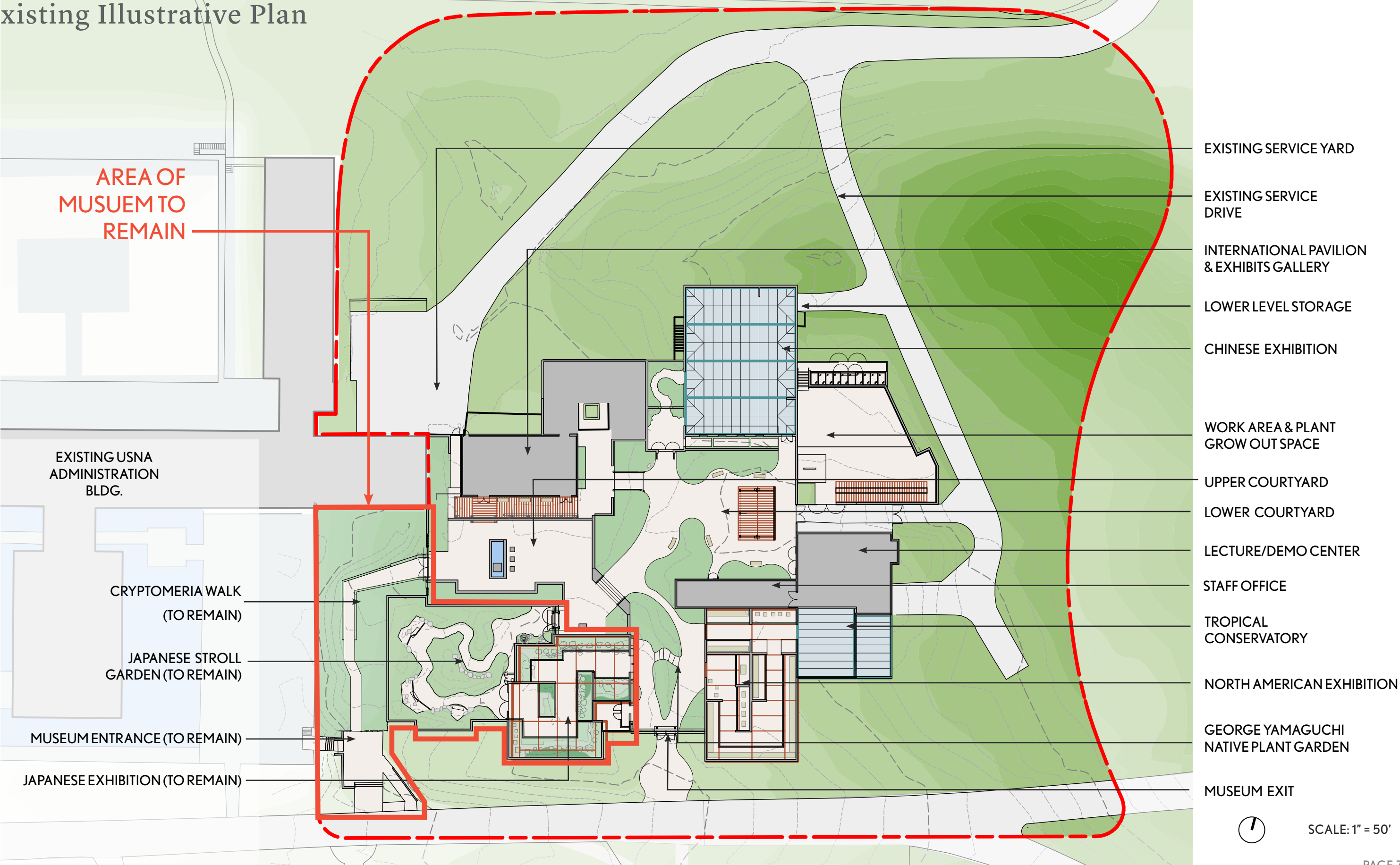
LOCATION OF UNITED STATES NATIONAL ARBORETUM IN WASHINGTON, D.C.
(IMAGE FROM GOOGLE EARTH)

PROJECT STATEMENT: LOCATION WITHIN ARBORETUM



EXISTING CONDITIONS ANALYSIS

Existing Illustrative Plan



PROJECT STATEMENT: GOALS

1. Renovate/rebuild the exhibitions to a level of quality expressed in the new Japanese Exhibition
2. Expand exhibits gallery with space for new collections; provide opportunities for interpretation within the collection
3. Bring clarity to the visitor experience including entrance, circulation and wayfinding
4. Improve ability to use the space for events
5. Strengthen the connection between the National Bonsai & Penjing Museum and the Arboretum Core including the future events pavilion
6. Provide universal accessibility throughout the museum complex
7. Consolidate service/operations, improving their functions while providing support space for events

MUSEUM DESIGN



MUSEUM DESIGN: SITE PLAN



MUSEUM DESIGN: PRINCIPLES FOR ORGANIZATION

1. Provide clear points of entry into the museum complex from the arboretum core, defined by gardens
2. Develop a central court with flexible use to unify the museum complex
3. Provide identifiable entrances into each exhibition located on the central court
4. Develop a garden at each exhibition entrance that prepares visitors for the bonsai experience within; allow adequate space for small groups to gather
5. Create clear, directional circulation through the bonsai collections; visitors should not wonder if they have missed a portion of the collection
6. Separate and clarify exhibition entries and exits
7. Privilege the bonsai exhibitions and minimize the presence of service/support in the complex; organize service spaces to support the goals of the Master Plan Update

MUSEUM DESIGN: VEGETATION

Develop the exhibitions as gardens for shade, the cooling benefits of vegetation, and to create a connection between the larger landscape and the intimate bonsai



Precedent: Pacific Northwest Bonsai Museum



SCALE: 1" = 50'

MUSEUM DESIGN: VEGETATION

Understory trees with evergreen groundcovers: potential species selection



CARPINUS CAROLINIANA



MAGNOLIA VIRGINIANA



BETULA POPULIFOLIA



AMELANCHIER SP.



SARCOCOCCA HOOKERIANA



HAKONECHLOA MACRA



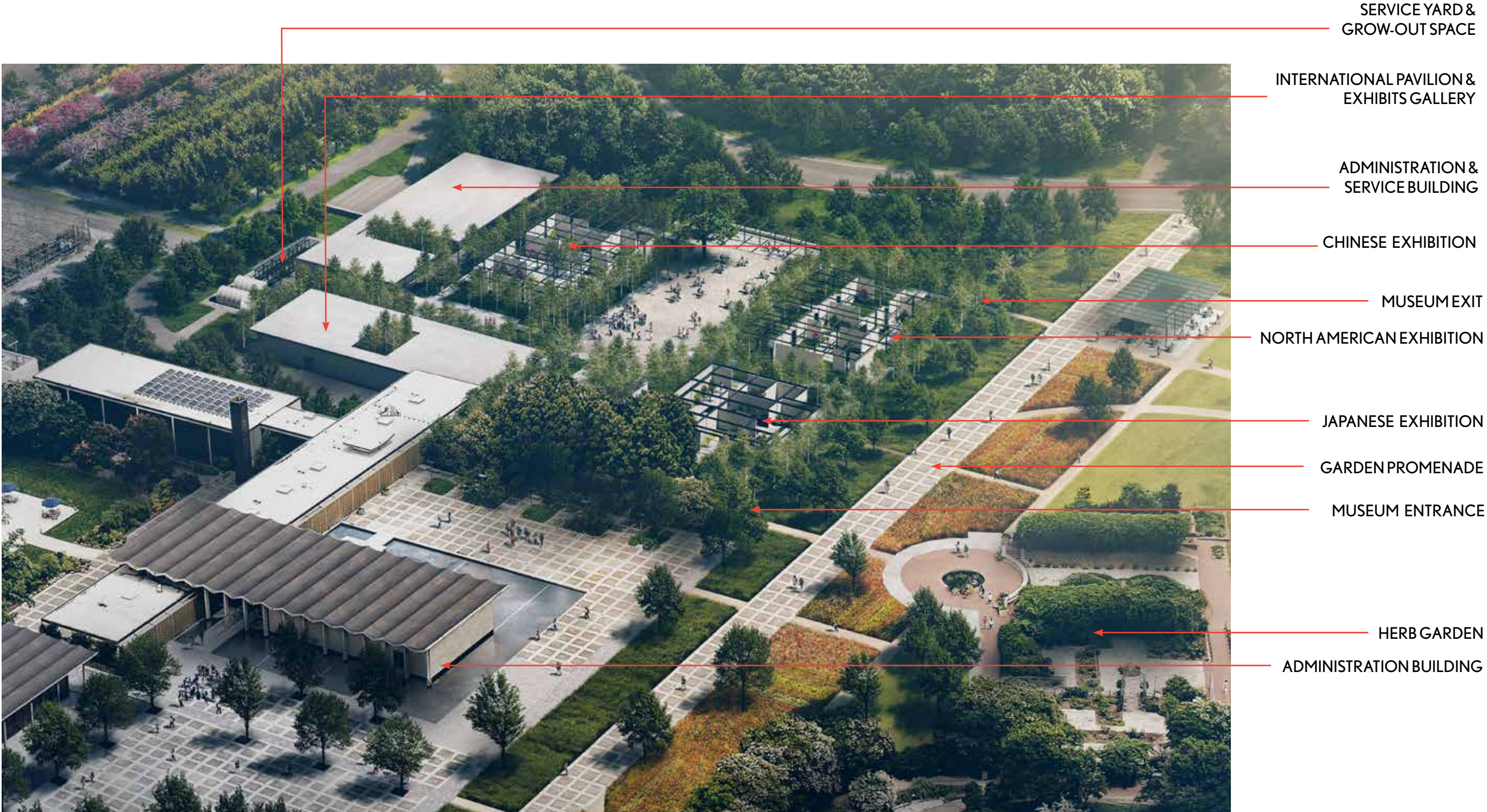
CAREX PENNSYLVANICA



JUNIPERUS CHINENSIS

MUSEUM DESIGN

Illustrative Aerial rendering



GARDEN EXHIBITIONS



GARDEN EXHIBITIONS: PRINCIPLES

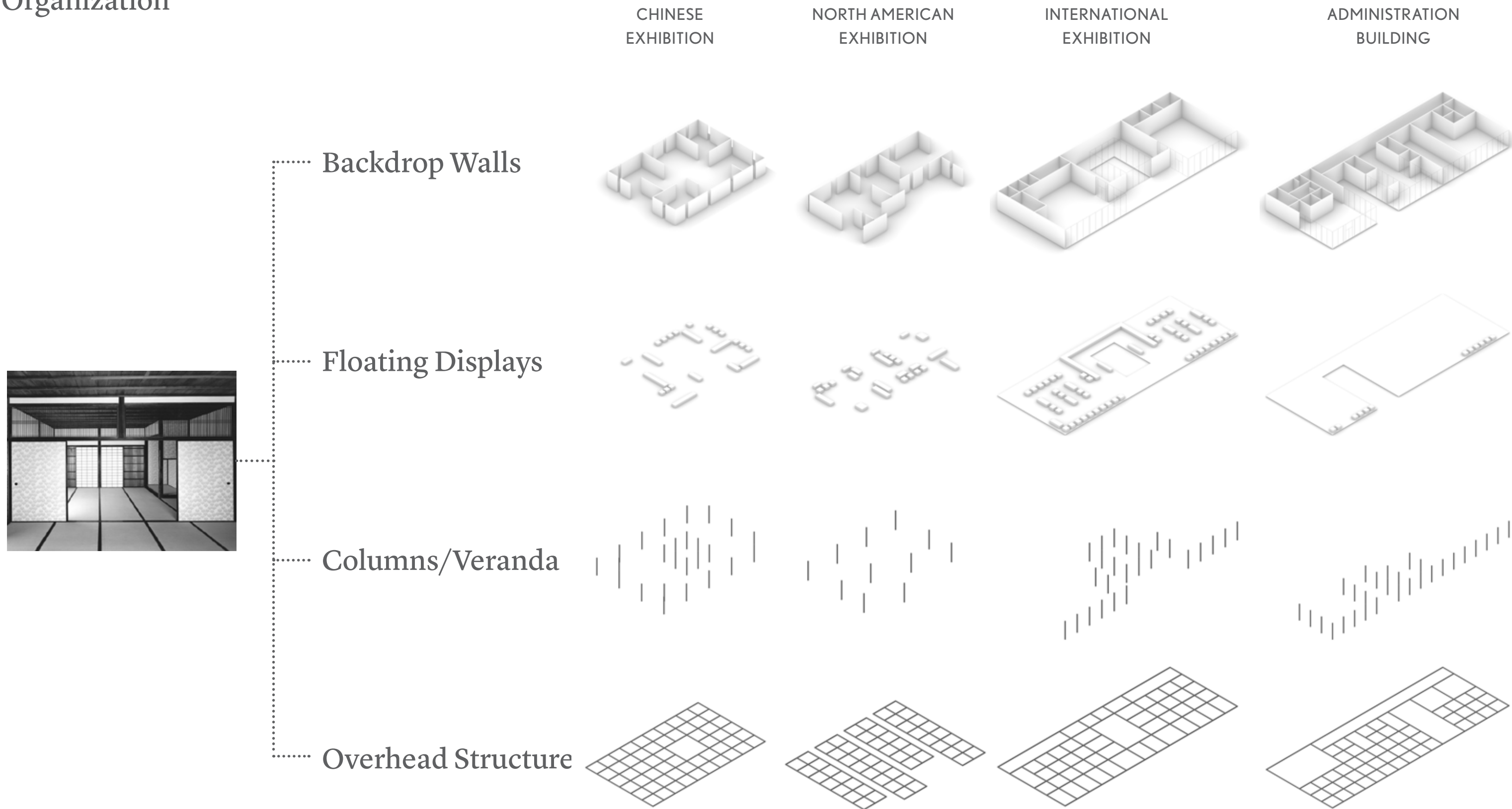
1. Each exhibition shall reflect the cultural expression of the bonsai or penjing within it, whether subtle or distinct
2. Promote the exhibitions as gardens rather than buildings
3. Create clear circulation through the exhibition for ease of wayfinding
4. Configure spaces to bring elements of surprise, revelation, and discovery to the visitor experience; allow for moments of pause and reflection within the exhibitions
5. Provide apertures in the exhibition enclosure for borrowed views and air flow
6. Incorporate vegetation into the exhibitions for cooling benefits
7. Allow for many solar orientations and micro-climates of the bonsai tree display areas to promote flexibility of use and tree rotation

GARDEN EXHIBITIONS: PRINCIPLES

8. Allow for ease of access and maintenance for museum staff
9. Provide physical barriers or visual cues to keep visitors at appropriate distance from the trees
10. Utilize durable materials that will age or patina over time, reflecting the longevity of the bonsai or penjing tradition
11. Forego winterization of exhibitions; develop overhead structural system for shade and lighting

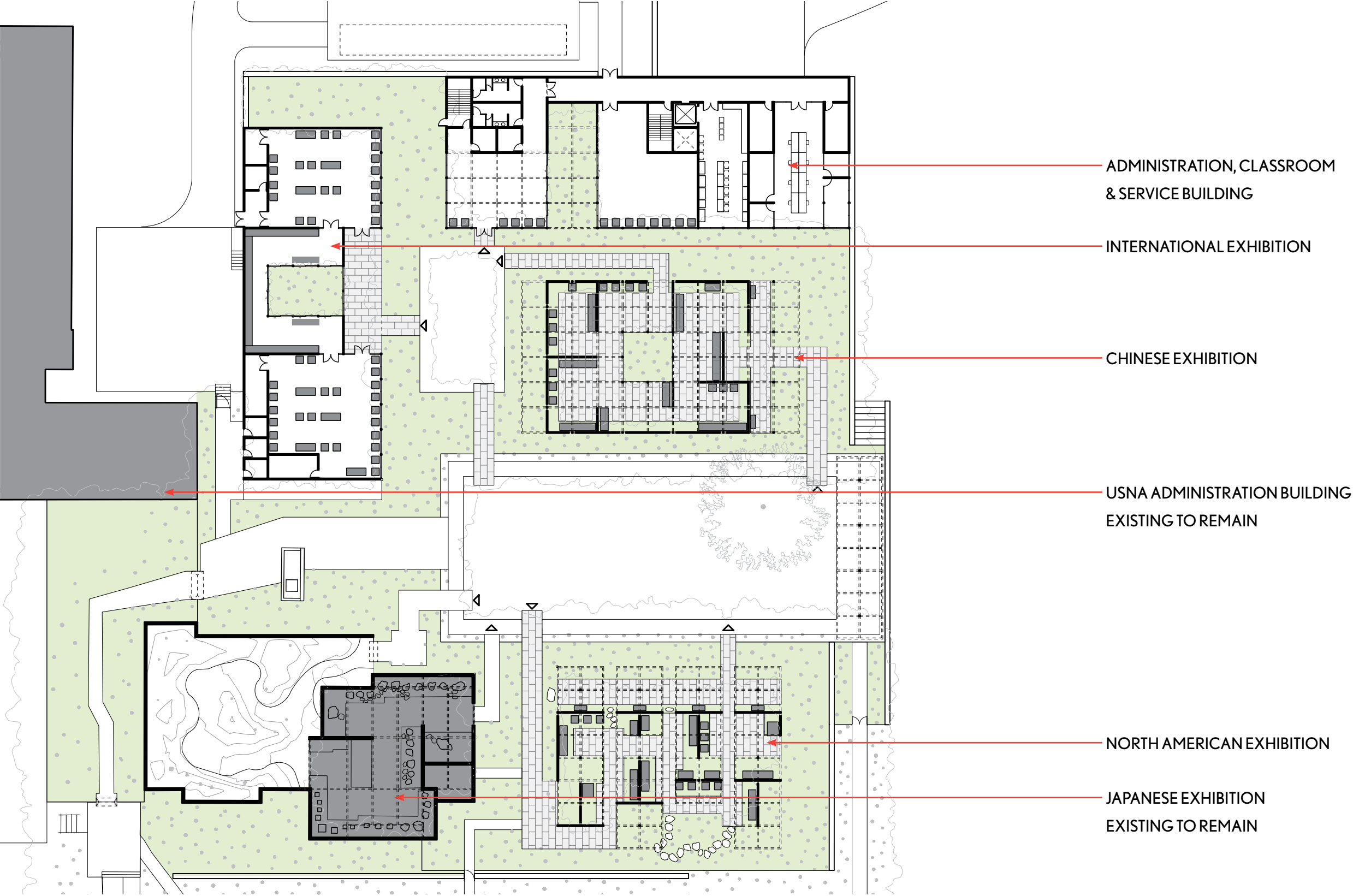
GARDEN EXHIBITIONS: SYSTEM COMPONENTS

Organization



GARDEN EXHIBITIONS: ARCHITECTURAL SITE PLAN

Museum Relationships



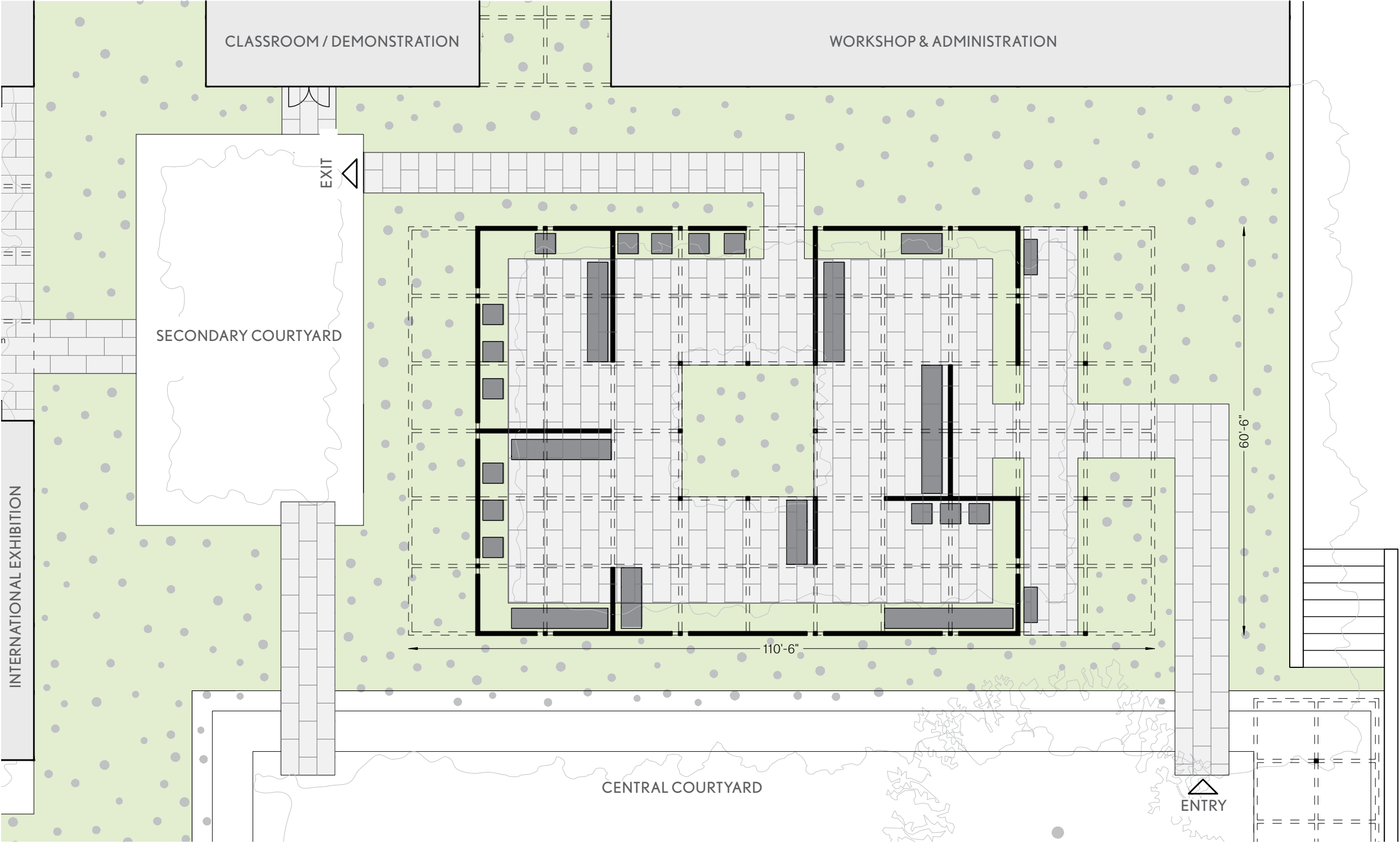
GARDEN EXHIBITIONS: CENTRAL COURTYARD

Rendering looking East



GARDEN EXHIBITIONS: CHINESE EXHIBITION

Plan



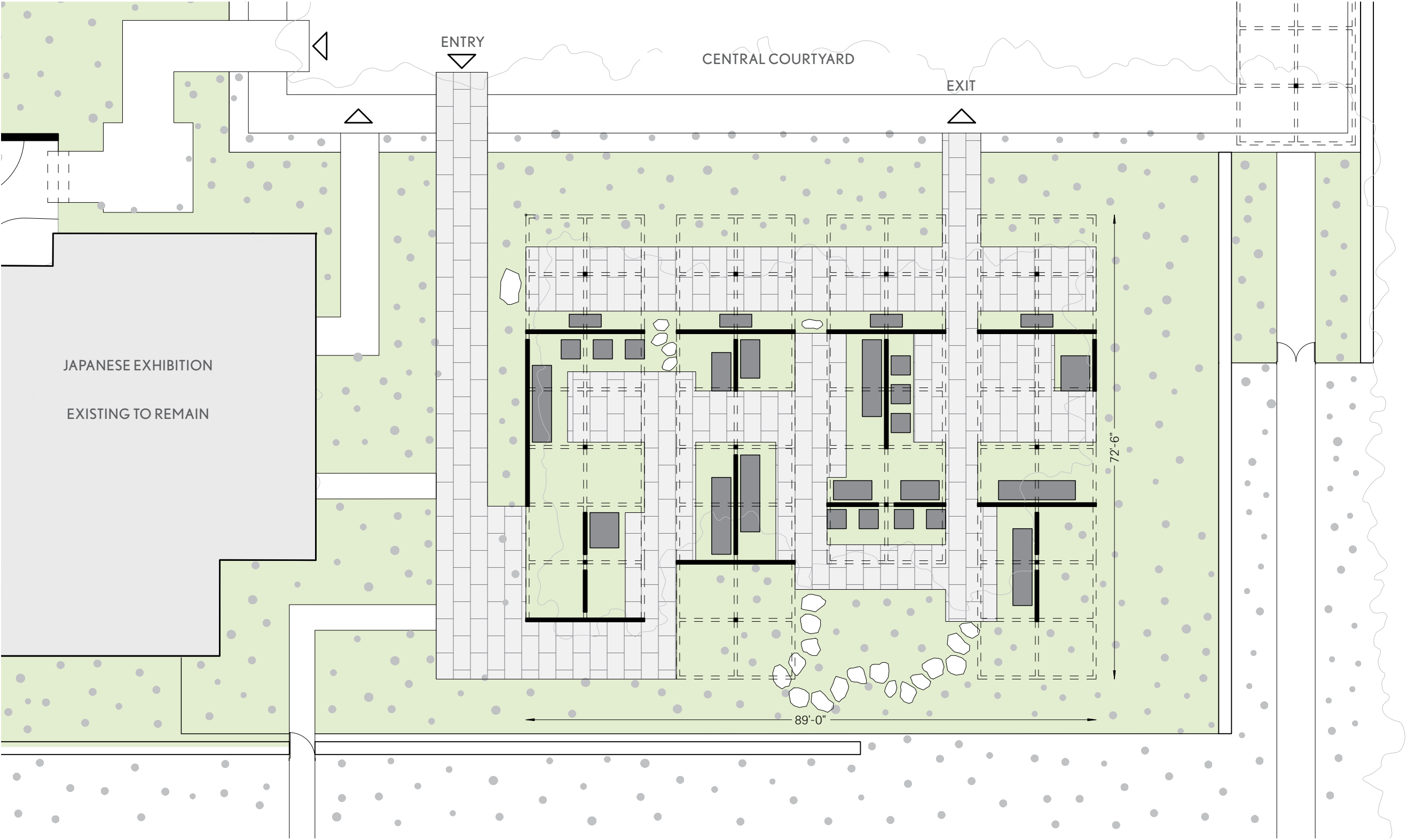
GARDEN EXHIBITIONS: CHINESE EXHIBITION

Exterior View of Entry Looking West



GARDEN EXHIBITIONS: NORTH AMERICAN EXHIBITION

Plan



GARDEN EXHIBITIONS: NORTH AMERICAN EXHIBITION

Exterior View of South Elevation



GARDEN EXHIBITIONS: NORTH AMERICAN EXHIBITION

Interior View, Featuring Goshin



CONDITIONED STRUCTURES



CONDITIONED STRUCTURES: INTERNATIONAL EXHIBITION & STONE GALLERY

Plan



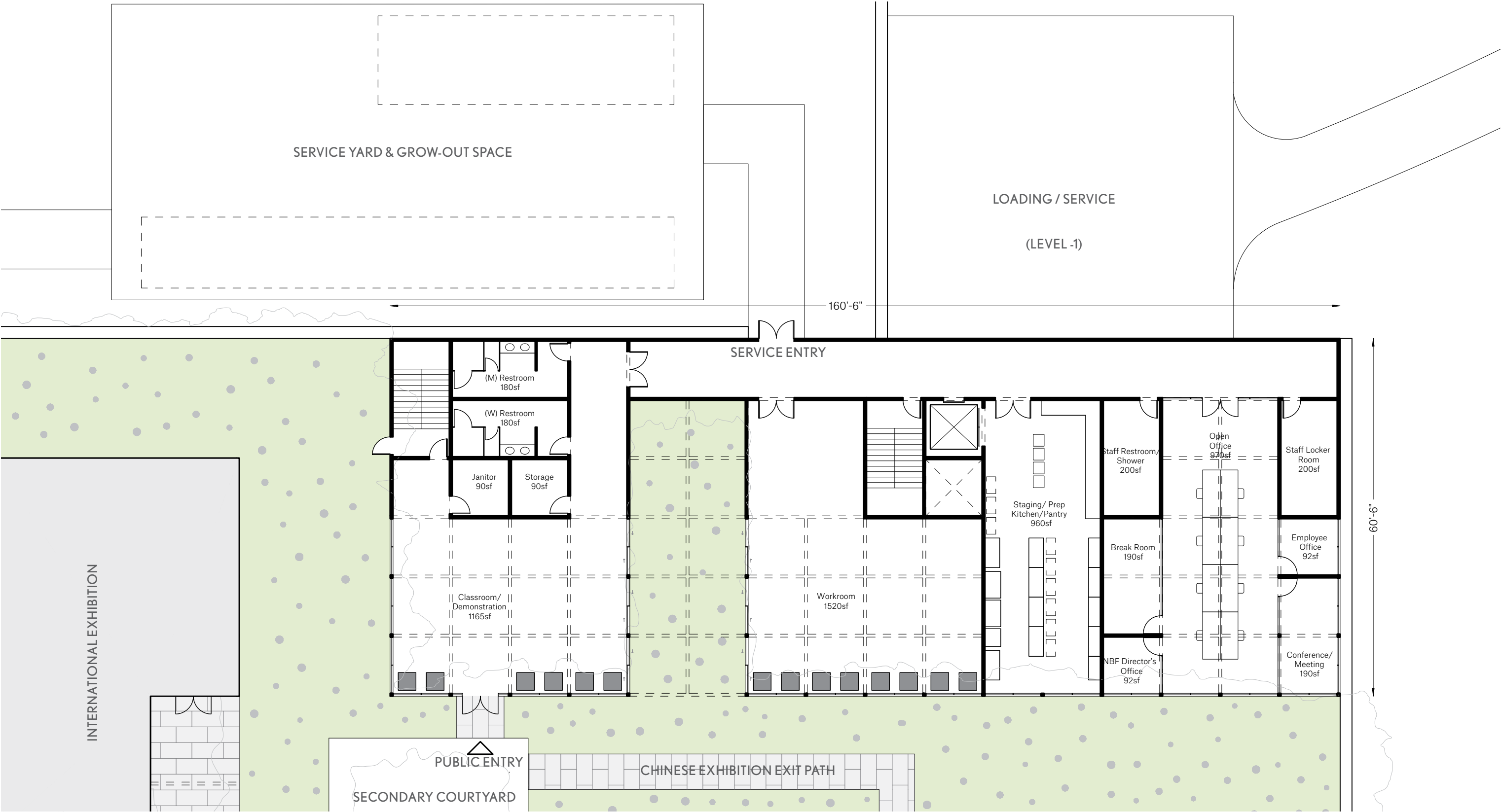
CONDITIONED STRUCTURES: INTERNATIONAL EXHIBITION & STONE GALLERY

Interior View of Stone Gallery [Kemin Hu Gallery]



CONDITIONED STRUCTURES: ADMIN., CLASSROOM & SERVICE BUILDING

Plan : Level 1



THREE DIMENSIONAL MODEL



MUSEUM COMPLEX

Physical Model Photography

