

US COMMISSION OF FINE ARTS
DGS/DCPS KING ELEMENTARY
SCHOOL MODERNIZATION
CONCEPT PRESENTATION

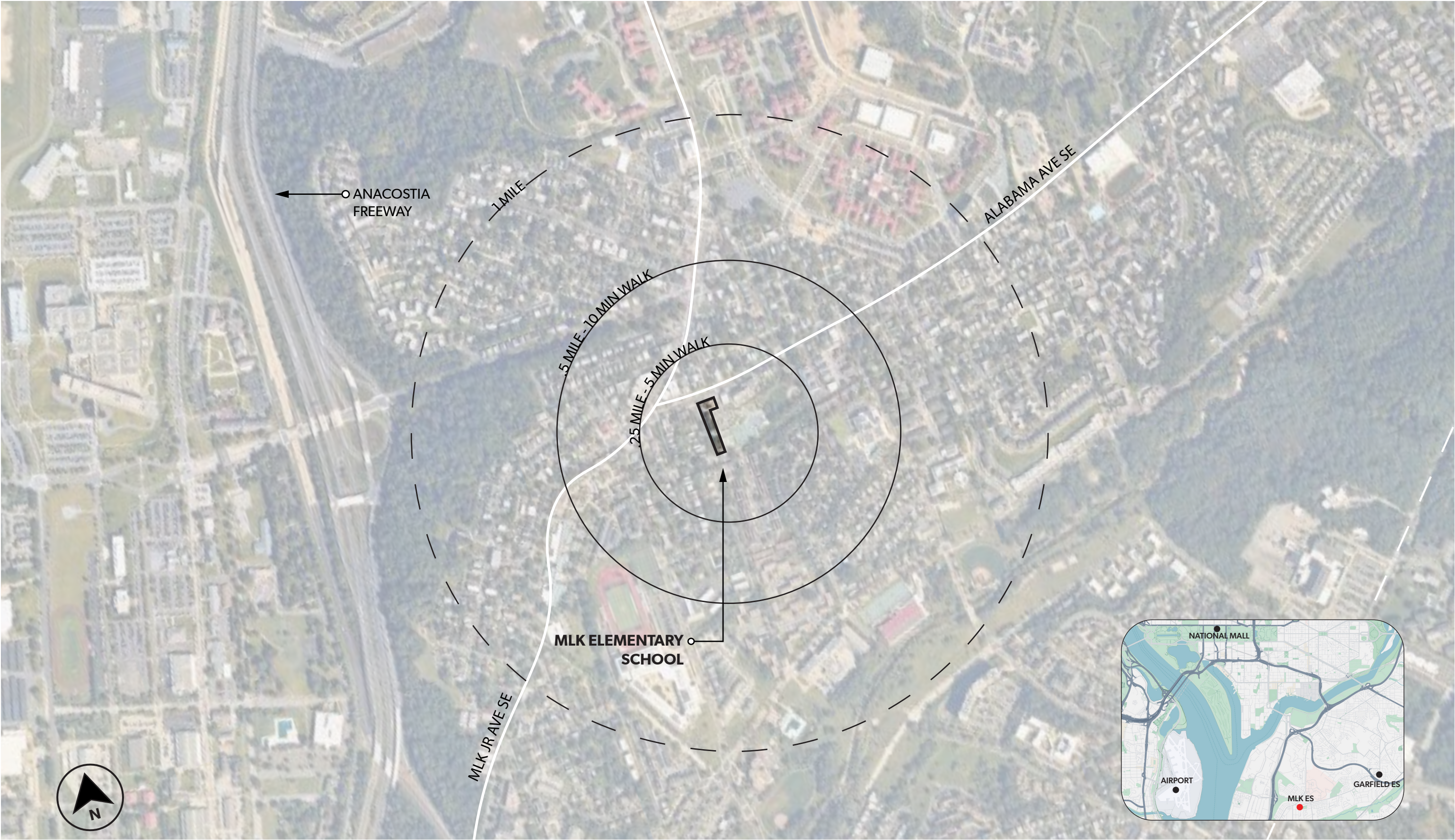
JANUARY, 2025



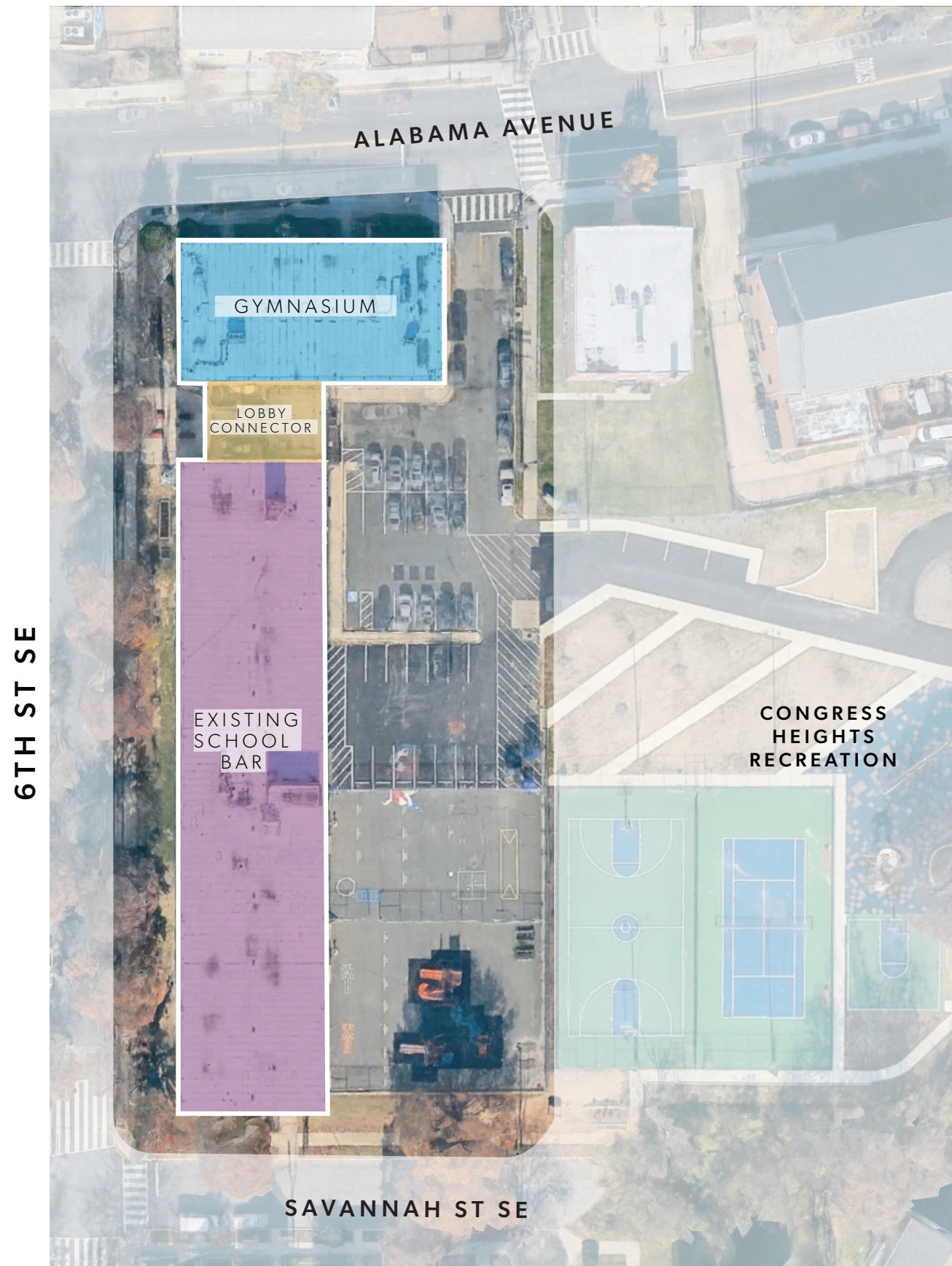
DISTRICT OF COLUMBIA
PUBLIC SCHOOLS



STUDIOS
architecture

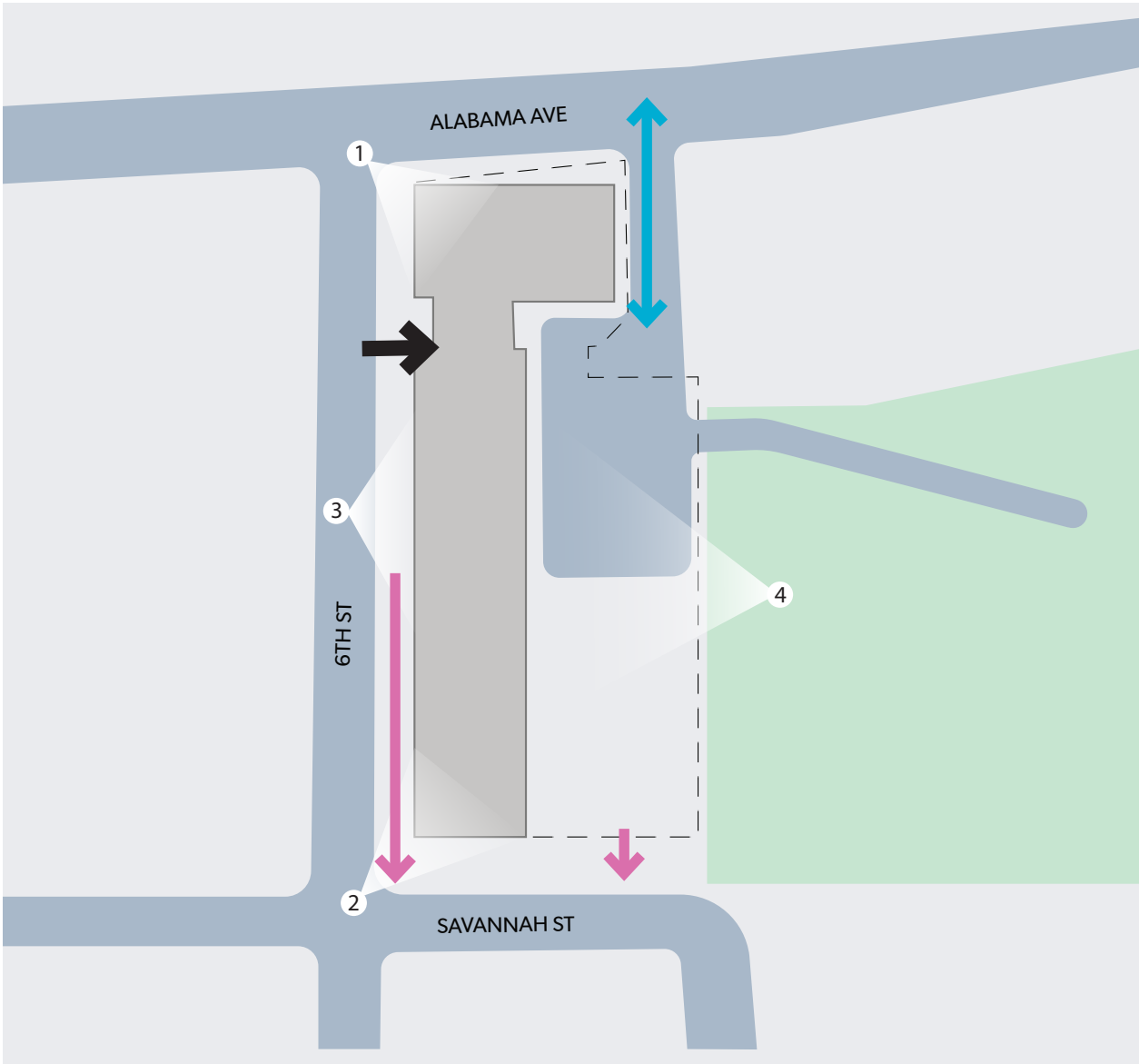




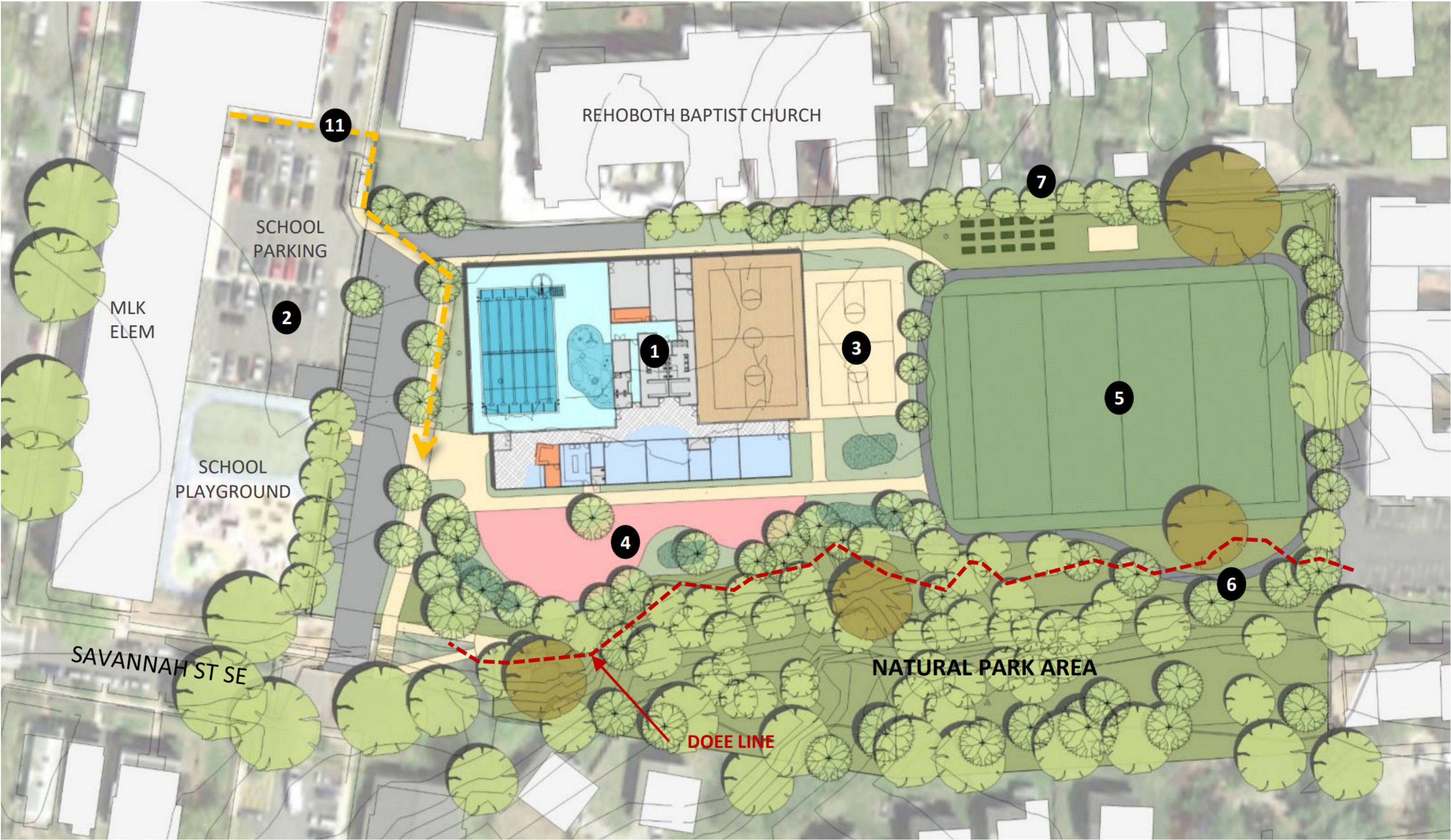


- Original building built in 1971
- 60,000 SF
- Current enrollment = 228 students
- Pre-K to 5th grade
- Entry replaced in 2015
- Shared gym + dining
- Makeshift library
- Does not meet current ed specs





- ➡ MAIN ENTRANCE(S)
- ↔ VEHICLE ACCESS
- ➡ SITE SLOPE DOWN



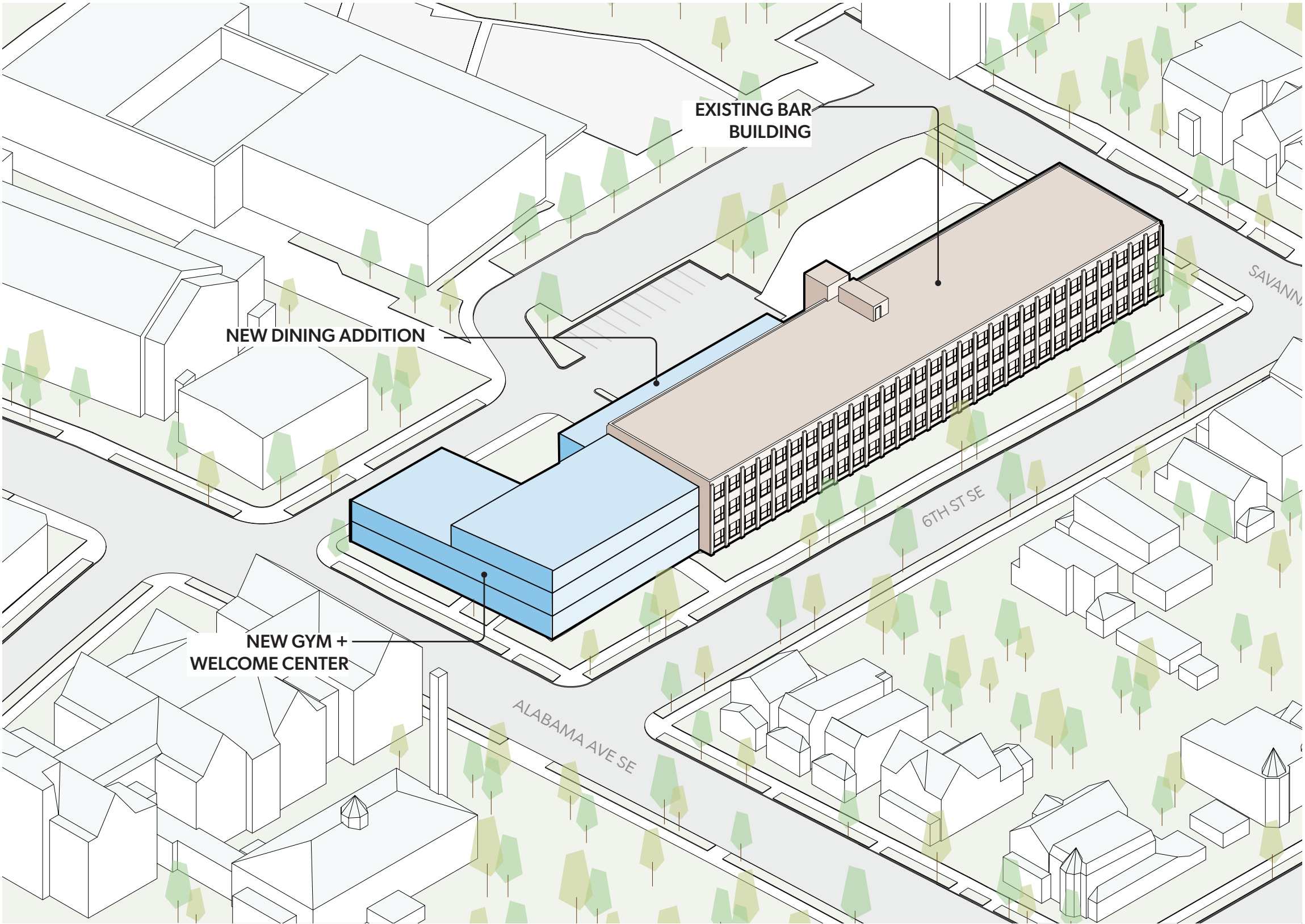






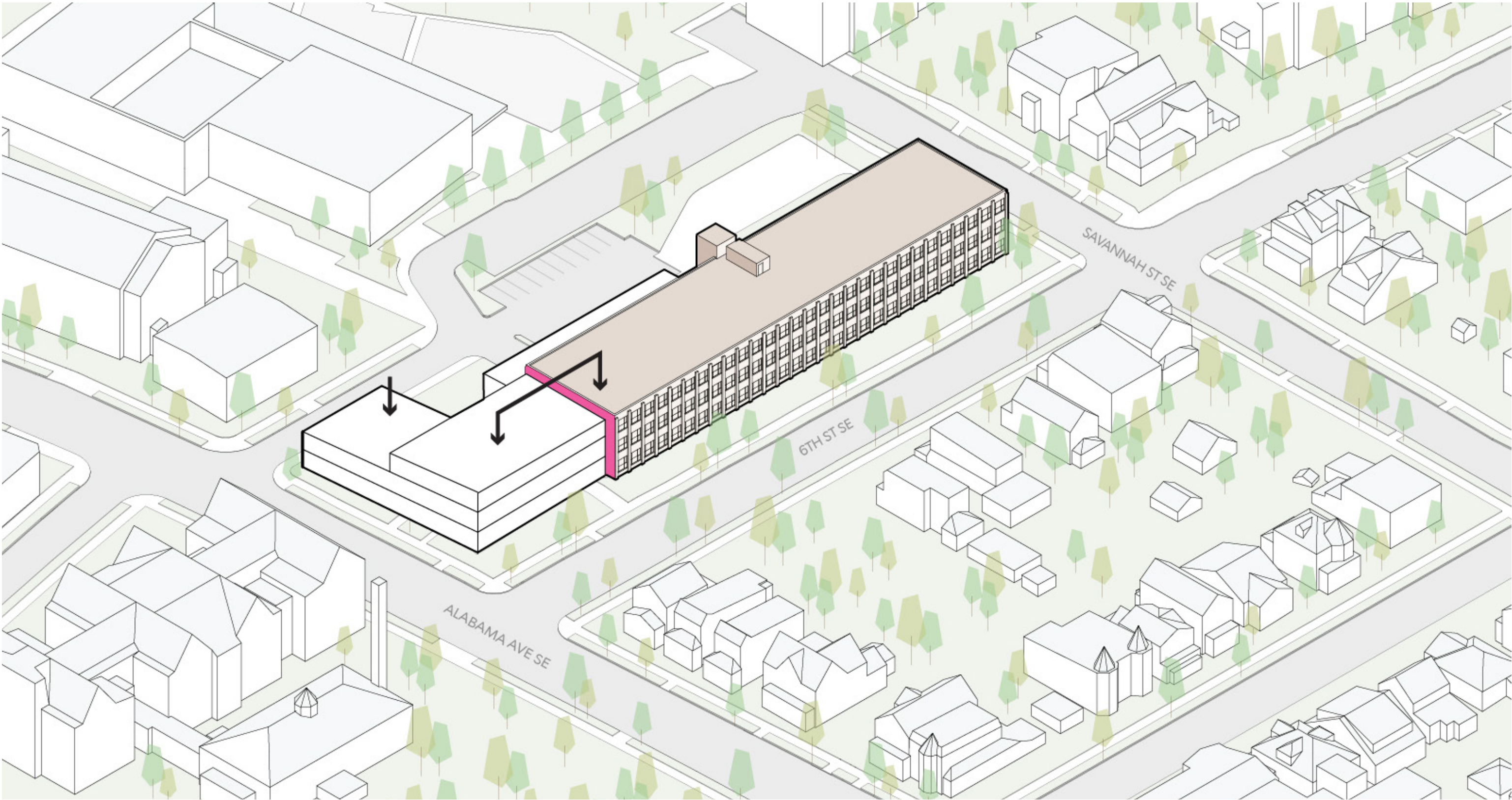


1. MODERNIZE AND ENLARGE SCHOOL TO MEET PROGRAM REQUIREMENTS
2. MAXIMIZE PROGRAMMABLE OUTDOOR SPACE
3. ENSURE SAFETY AND SECURITY OF STUDENTS AND STAFF
4. CONSIDER DAY-TO-DAY CIRCULATION OF STUDENTS, STAFF, AND PUBLIC
5. MEET DISTRICT SUSTAINABILITY GOALS
6. SIGNAL CHANGE AND IMPROVEMENT TO THE COMMUNITY

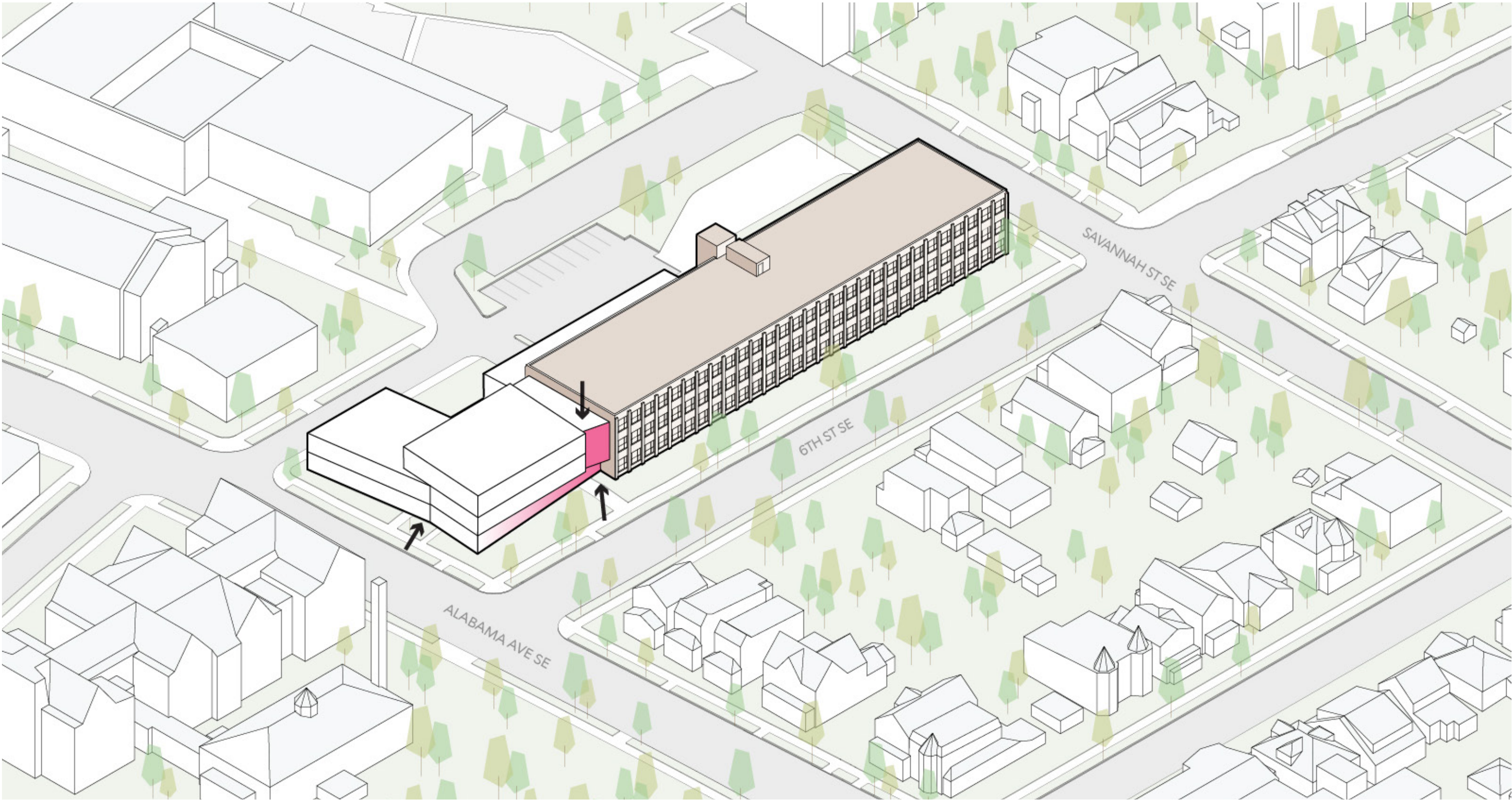


OVERVIEW:

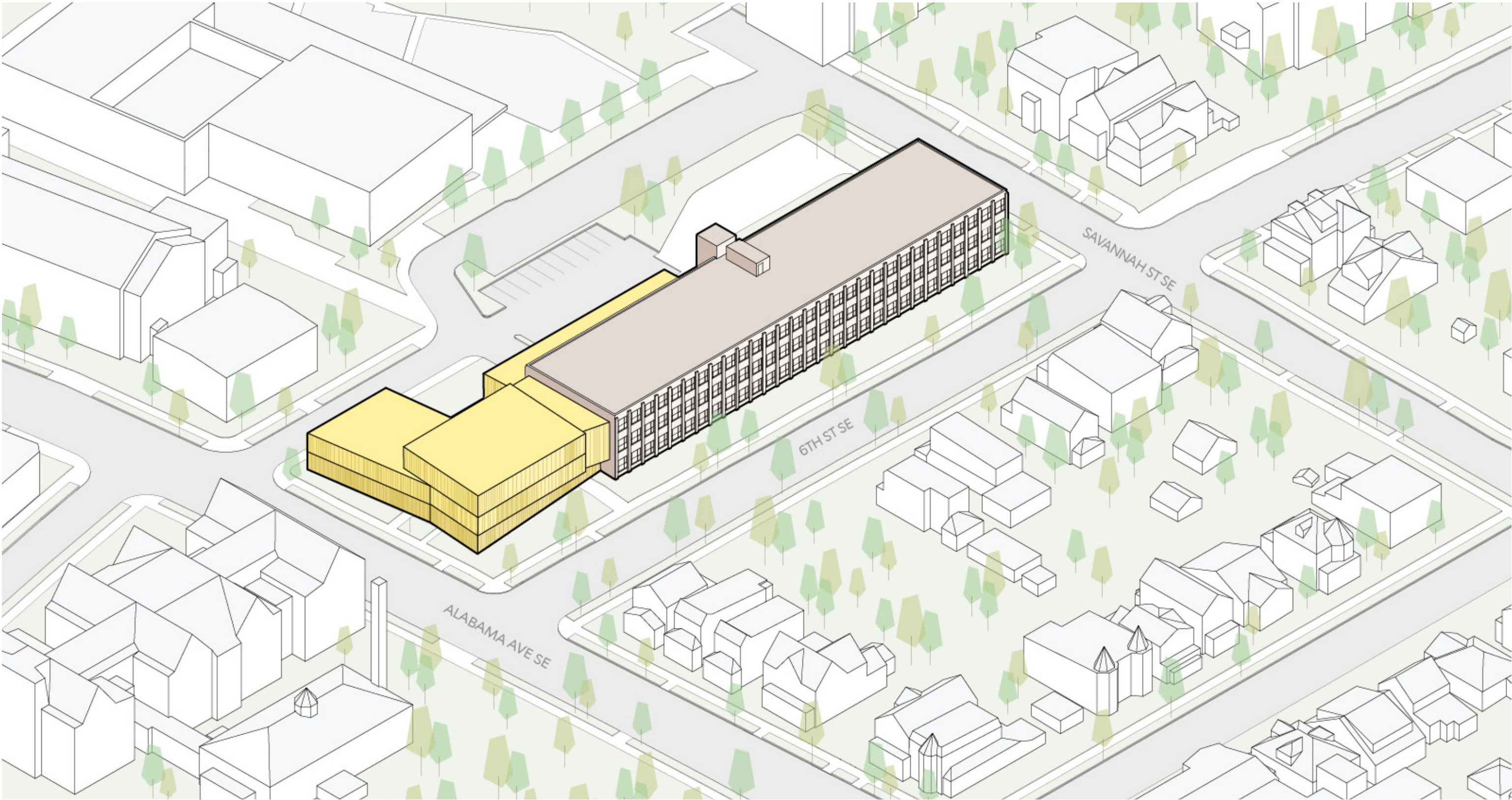
New addition in same general location of existing gym and entrance lobby. The new addition will house a modernized gym, library, administrative space, and entrance lobby. A small linear addition at the ground floor along the existing classroom bar will house critical functions for a new cafeteria and kitchen.



3-STORY EXPRESSION HELPS TO GIVE THE BUILDING CIVIC PRESENCE AT THE CORNER

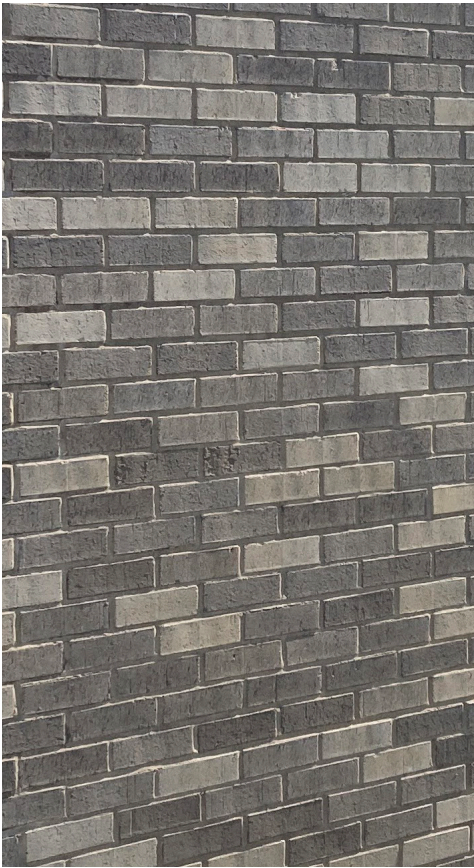


INFLECTIONS BREAK DOWN THE VOLUMES AND CREATE INTEREST. THE ENTRANCE IS DENOTED ARCHITECTURALLY AND PULLS THE EYE FROM THE CORNER.



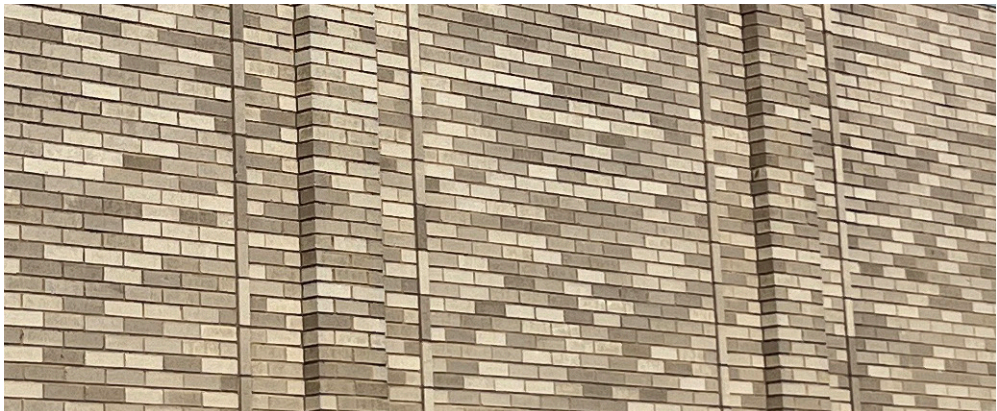
LIKE THE EXISTING BUILDING, THE NEW ARCHITECTURE CAN BE POWERFUL AS A SINGLE MATERIAL/COLOR
GESTURE THAT USES TEXTURE TO CREATE INTEREST

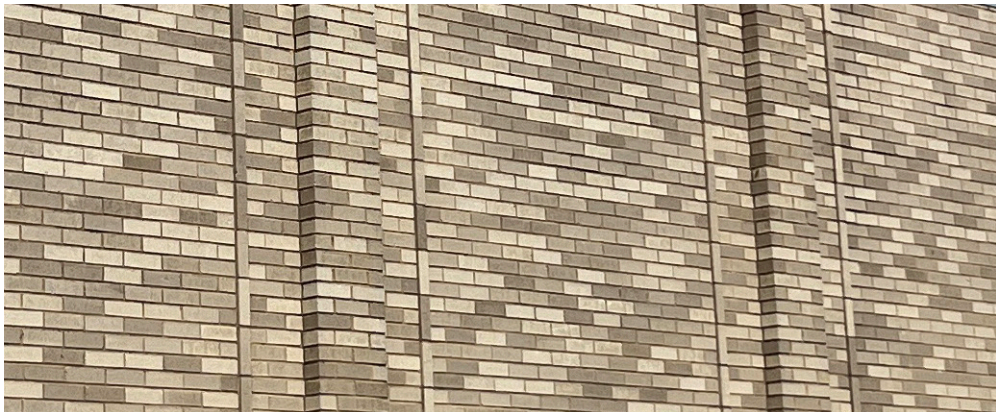


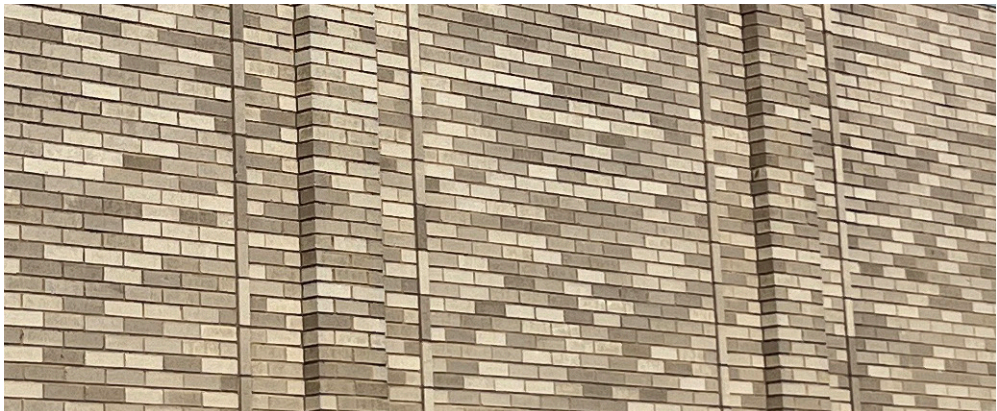


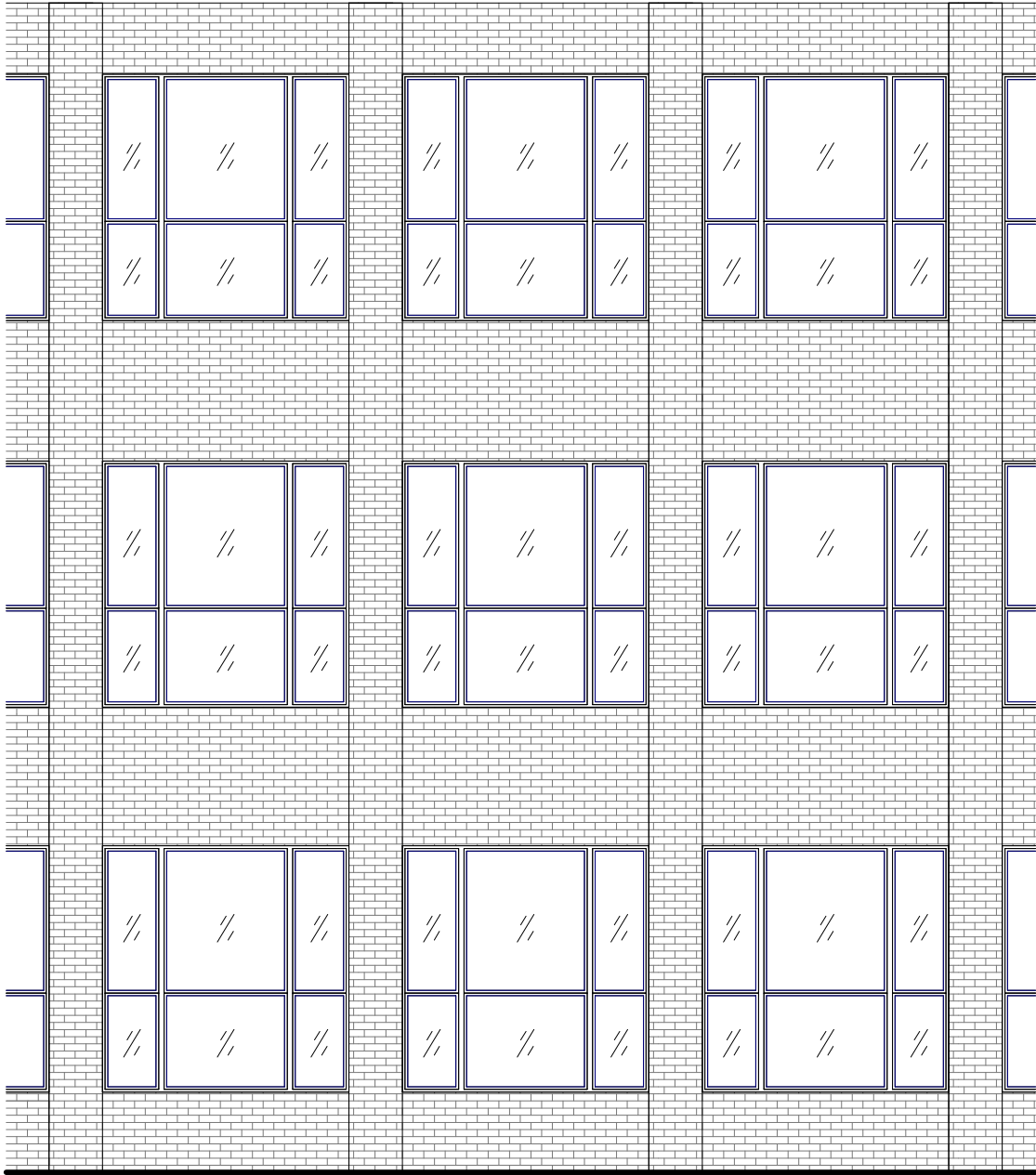
SCHOOL COLORS ARE RED AND BLACK. AN EARTHY RED CAN CONNECT WITH THE SCHOOL CULTURE AND FEEL NATURAL ON THE SITE.



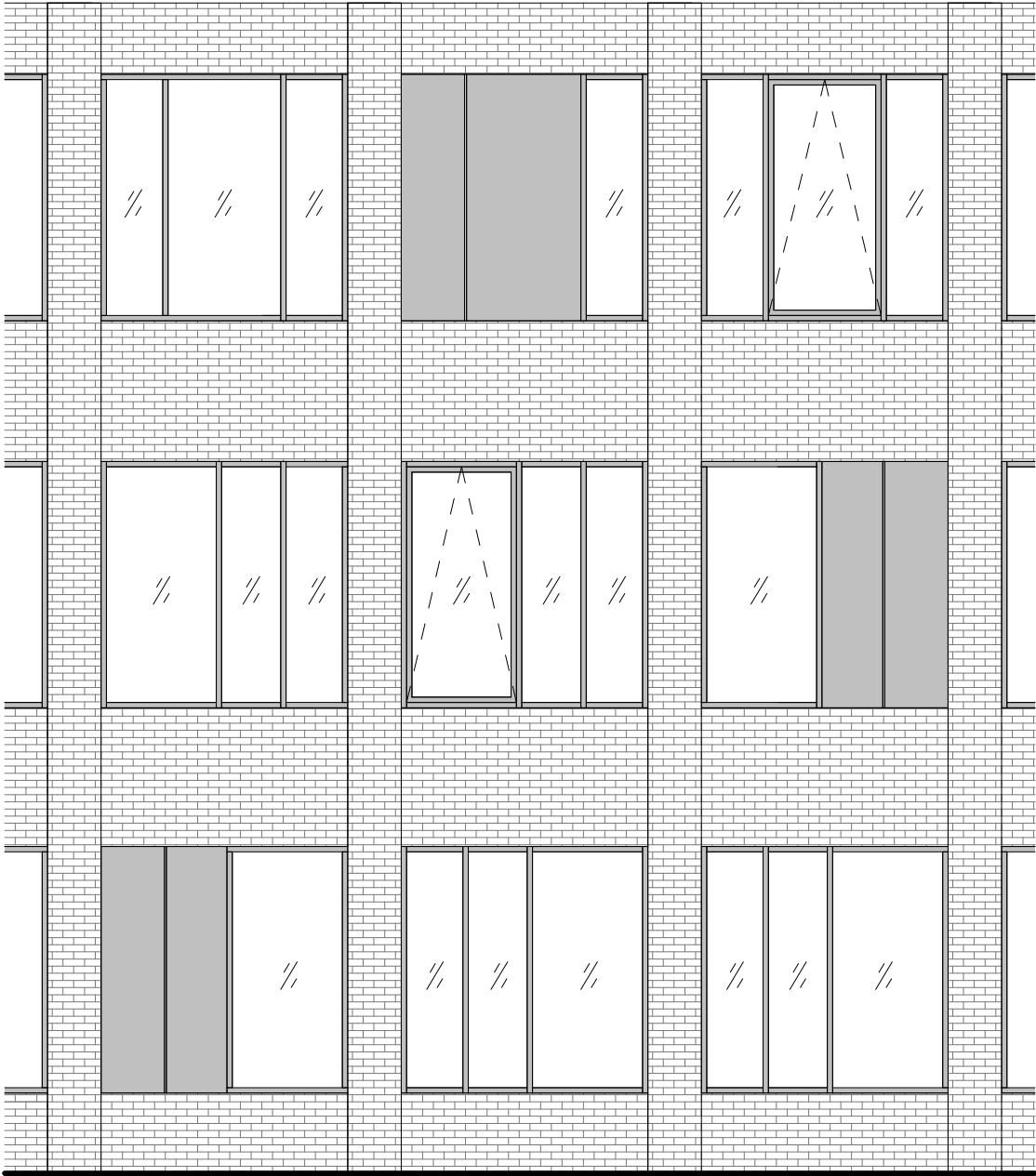




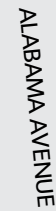




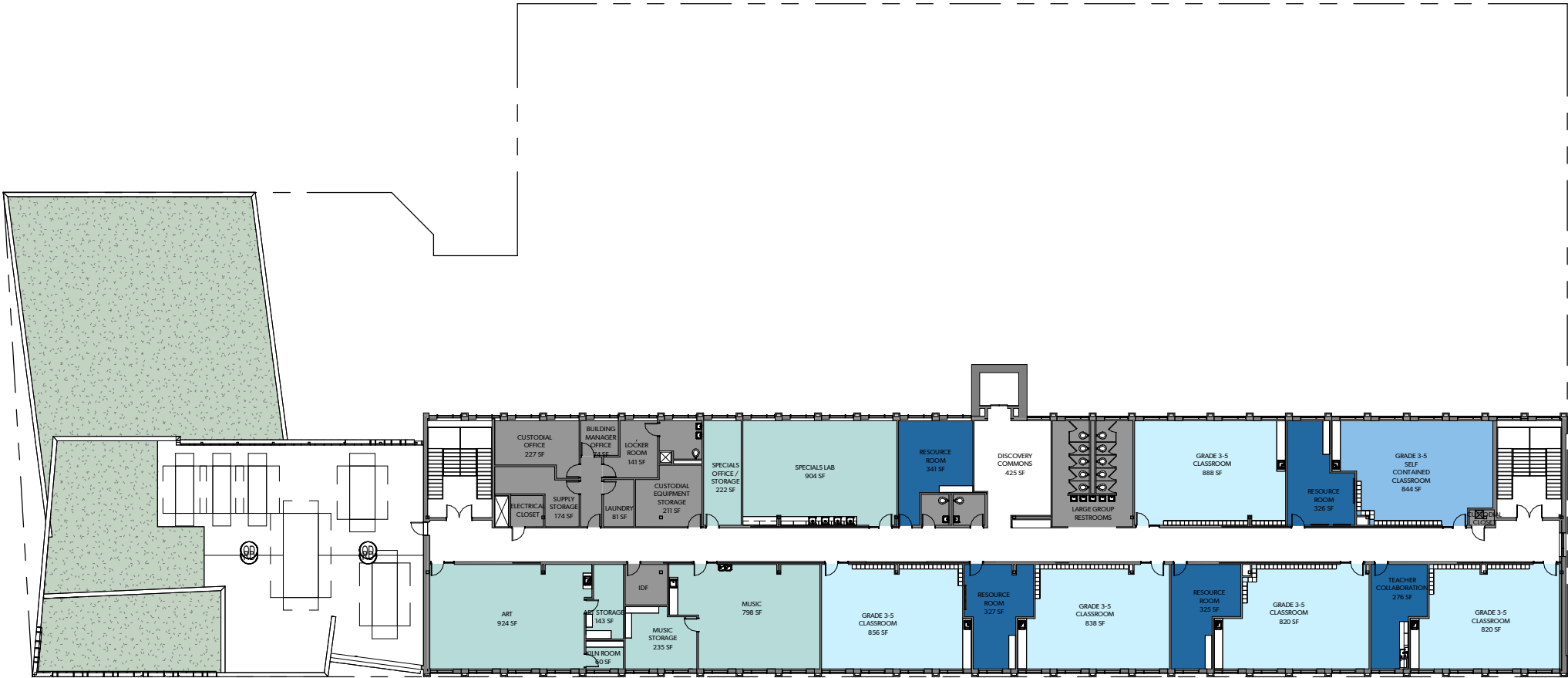
EXISTING

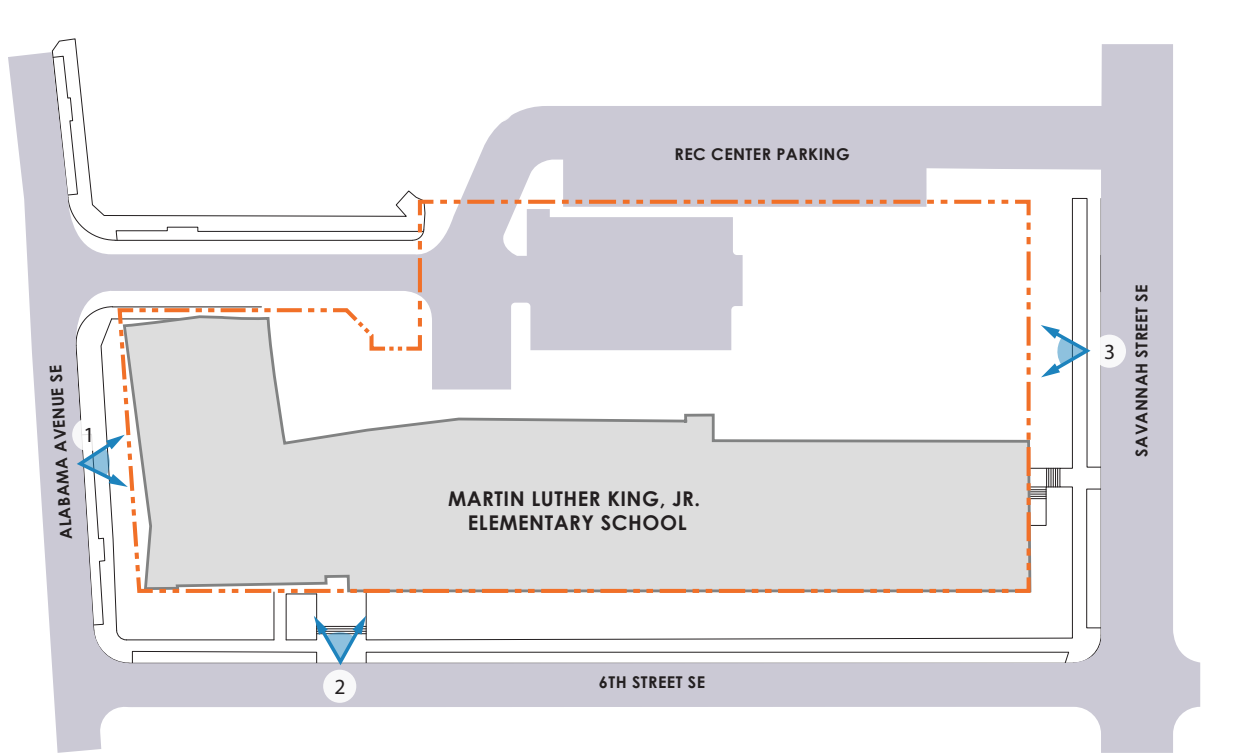


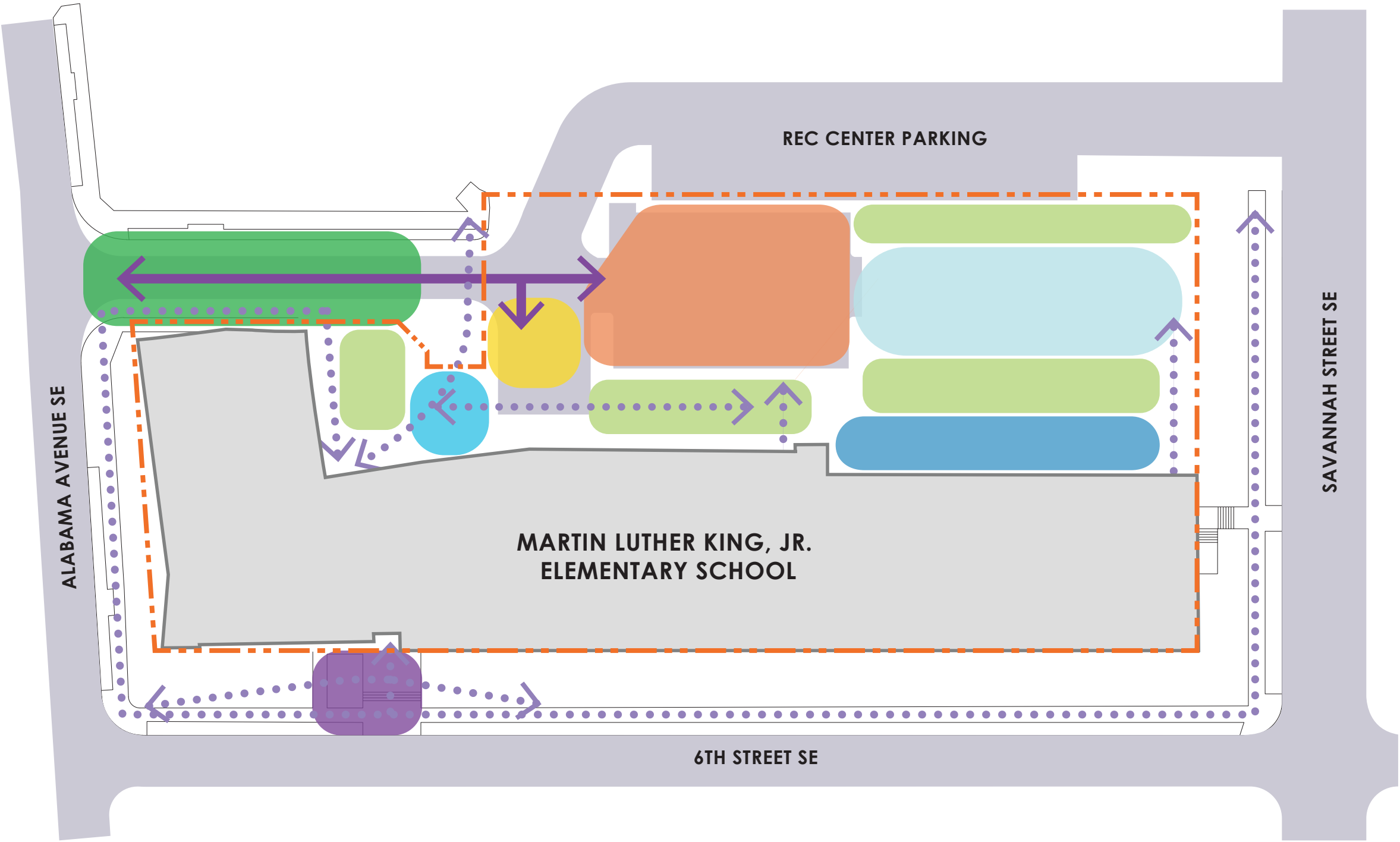
PROPOSED





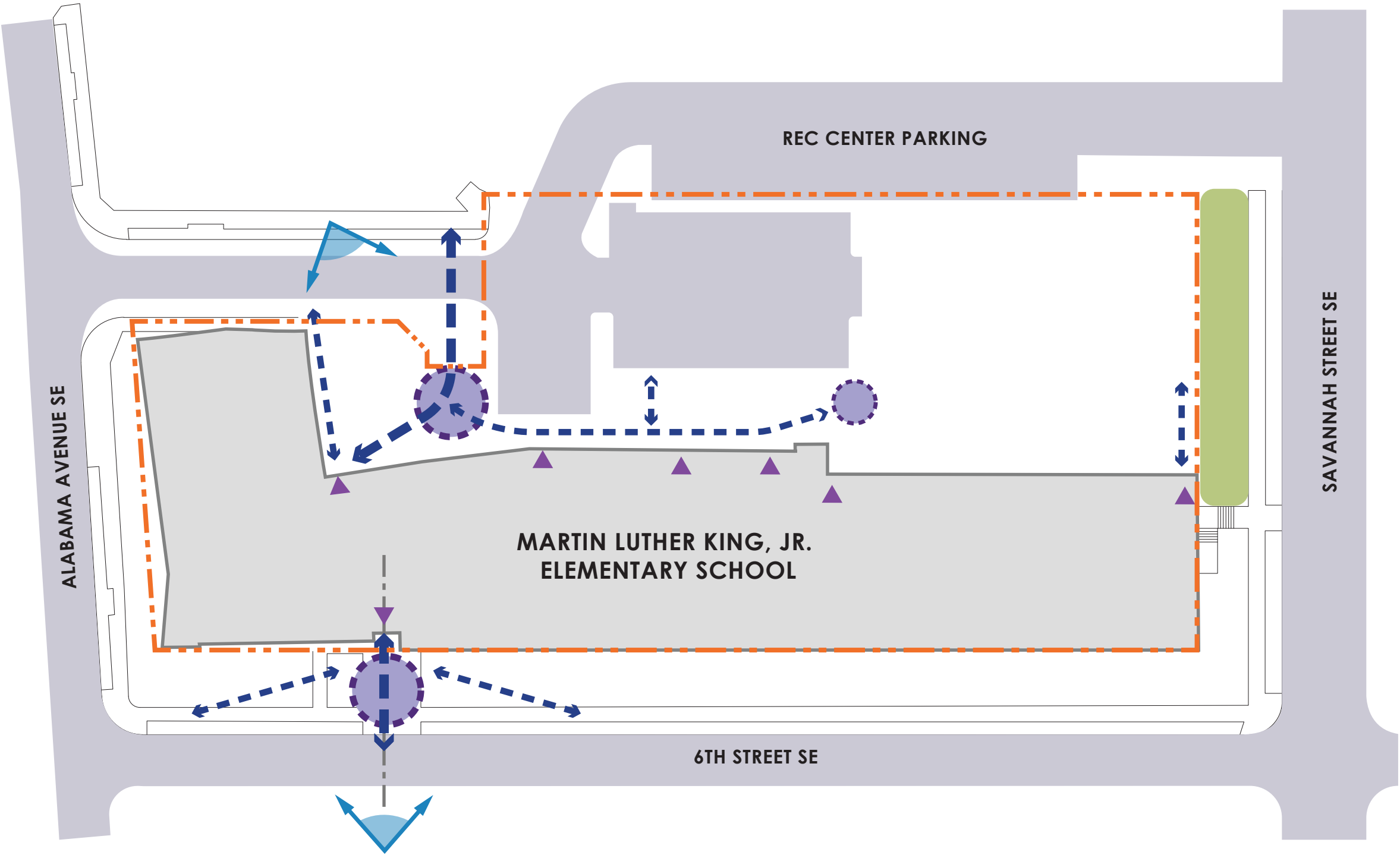






LEGEND

- SERVICE
- PARKING
- BIORETENTION
- STREETSCAPE IMPROVEMENTS
- GATHERING
- OUTDOOR CLASS
- 2-5 PLAY
- 5-12 PLAY/HARD COURT/TRAFFIC GARDEN
- VEHICULAR ACCESS
- PRIMARY PEDESTRIAN CIRCULATION
- PROPERTY LINE



LEGEND

- PRIMARY CIRCULATION
- SECONDARY CIRCULATION
- NODE
- PRIMARY AXIS
- SIGNIFICANT SLOPE
- VANTAGE POINT
- PROPERTY LINE



