



SMOTHERS ELEMENTARY SCHOOL MODERNIZATION



WASHINGTON D.C.

U.S. COMMISSION OF FINE ARTS

FINAL REVIEW SUBMISSION

APRIL 15, 2021



EXISTING CONDITIONS - EXTERIOR PHOTOS



FRONT FACADE - CENTAL BAY



FRONT FACADE - BROOKS STREET NE



MAIN ENTRY VESTIBULE SURROUND



BAY WINDOW - EAST ELEVATION





NORTH ELEVATION - CHIMNEY STACK



NORTH ELEVATION AND MULTI-PURPOSE ROOM



EAST ELEVATION



MURAL ON MULTI-PURPOSE ROOM

EXISTING CONDITIONS - INTERIOR PHOTOS



BUILT IN BOOK SHELVES



ARCHED ENTRY FOR CLOAKROOM



CLOAKROOM



INTERIOR VIEW CLASSROOM



INTERIOR OF MULTIPURPOSE ROOM WITH PROSCENIUM



WARPED WOOD FLOORING IN CLASSROOM



WEST STAIRWAY



INTERIOR DOORS





SITE ACCESS

EXISTING FLOOR PLANS

- Admin & Teacher Collab Workrooms

Support / Storage / Copy

Health Suite

Classrooms

Pre-K/K Classrooms

Specialized Learning (labs)

Special Education
- Media Center

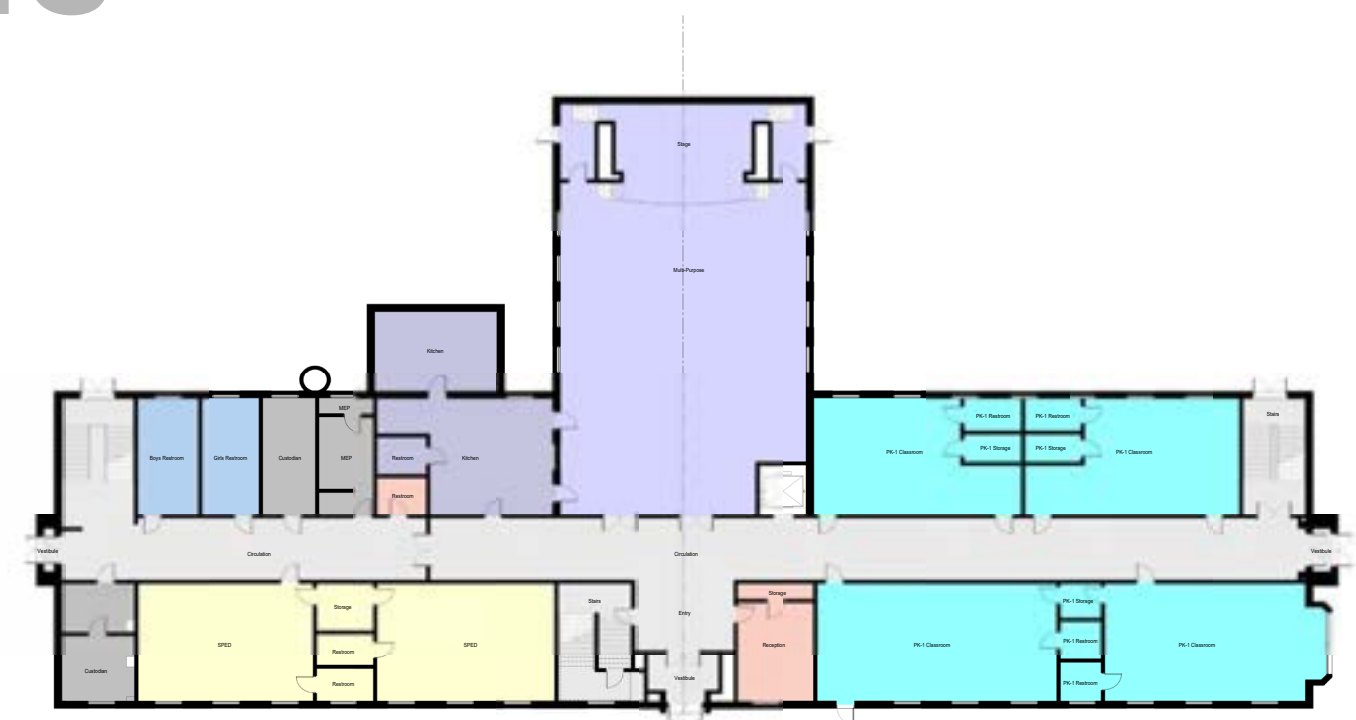
Dining and Food Service

Multi-Purpose

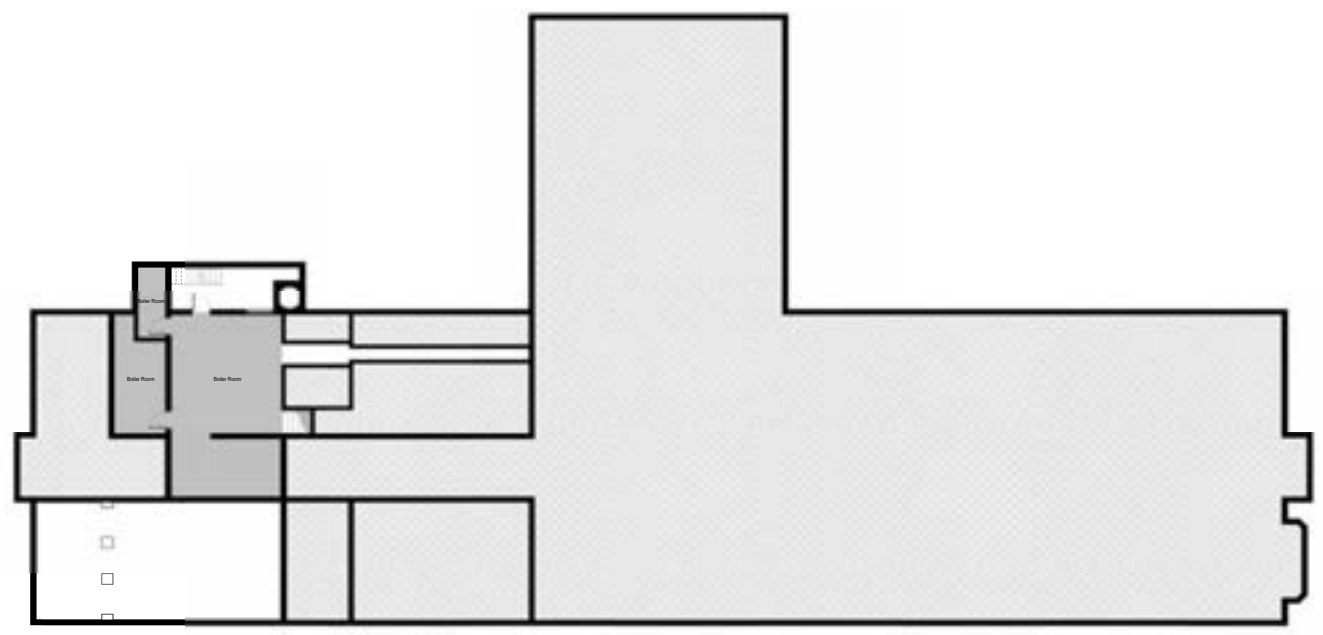
Student Restrooms

Circulation

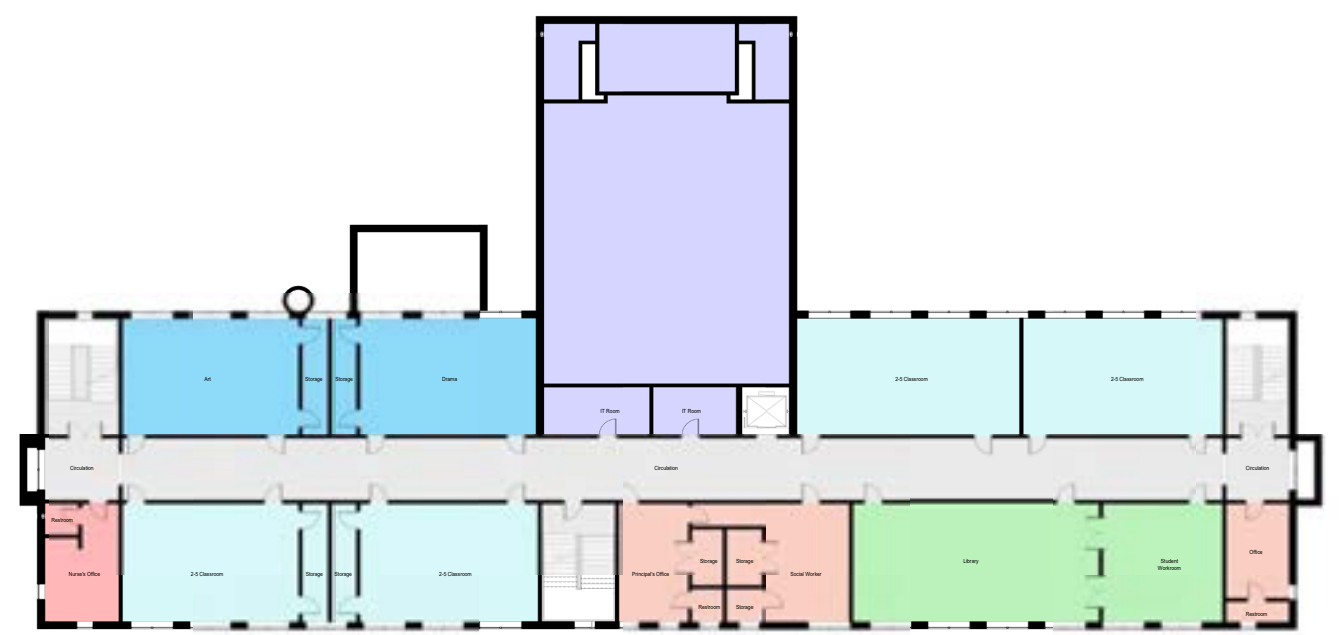
Building Services



GROUND FLOOR PLAN



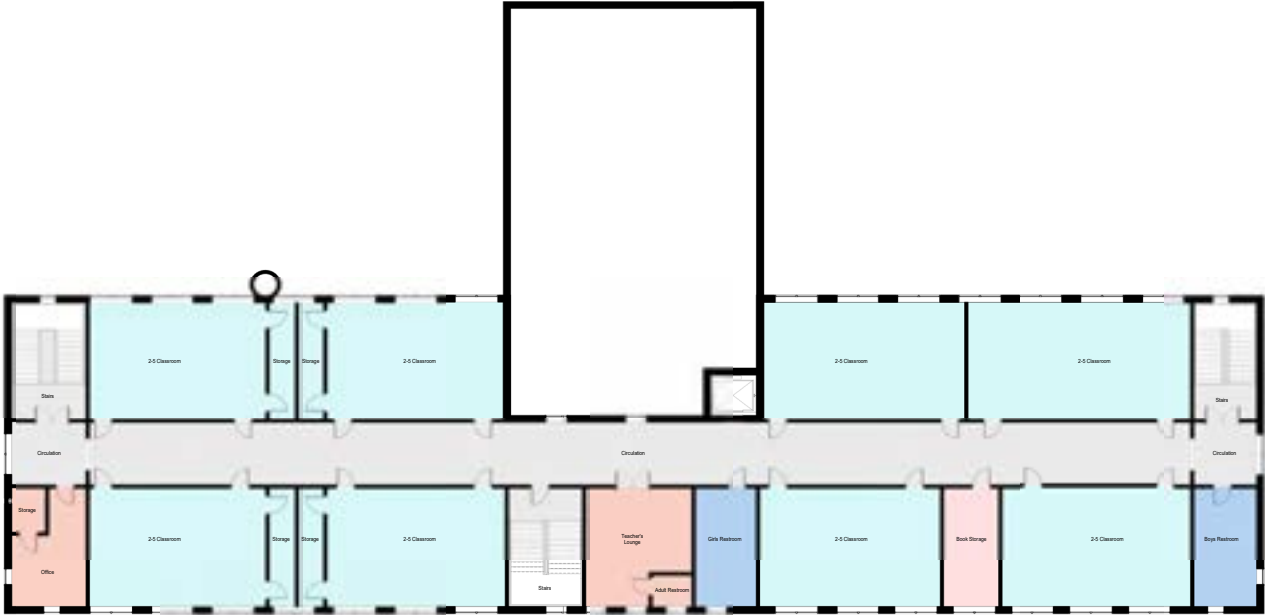
BASEMENT PLAN



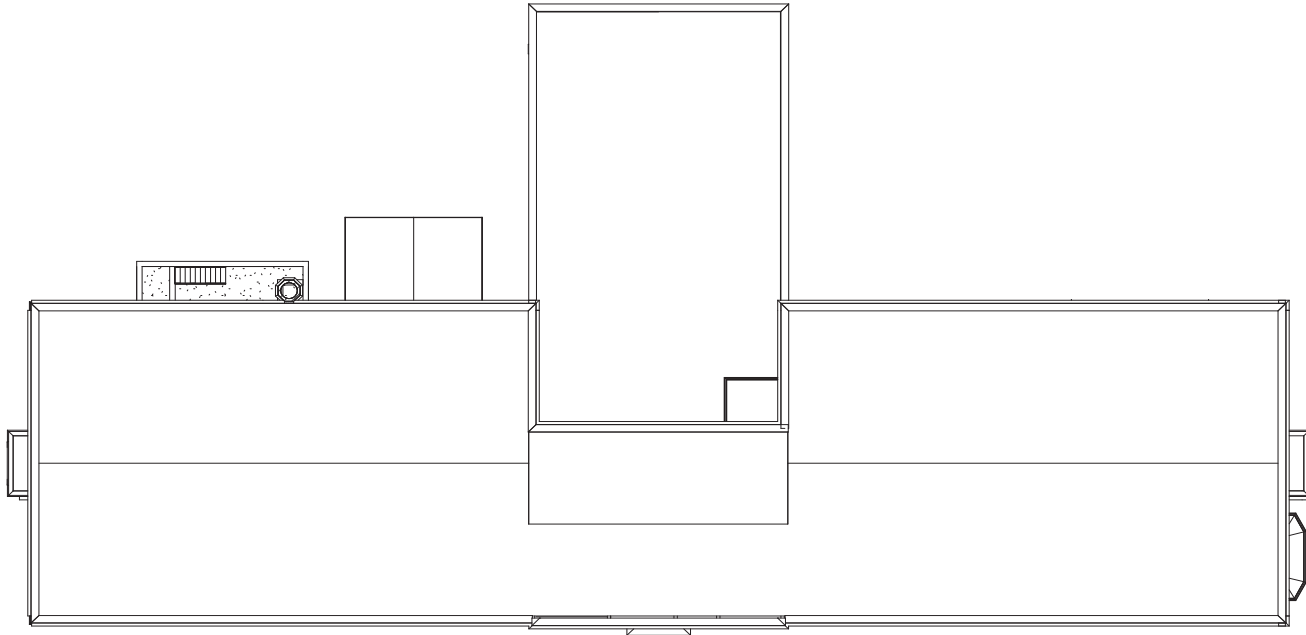
SECOND FLOOR PLAN

EXISTING FLOOR PLANS

EXISTING BUILDING PLANS



THIRD FLOOR PLAN



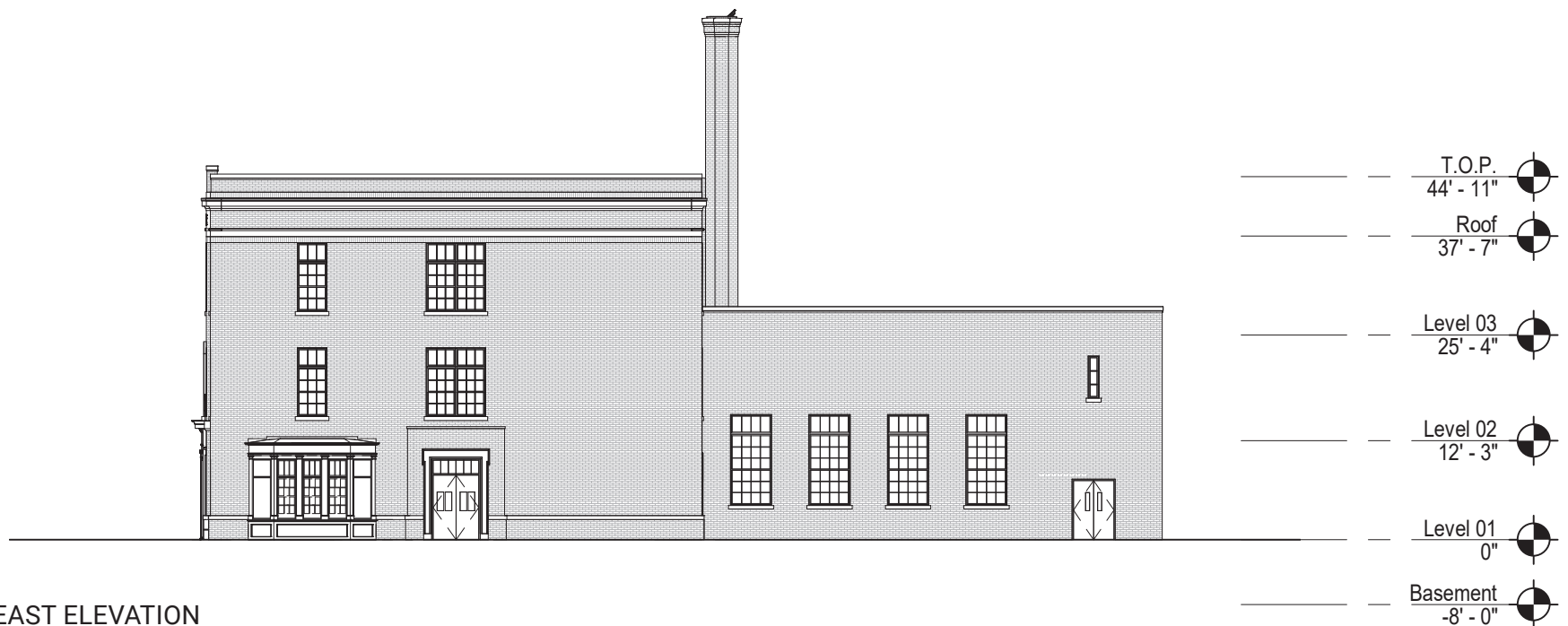
ROOF PLAN

- Admin & Teacher Collab Workrooms
- Support / Storage / Copy
- Health Suite
- Classrooms
- Pre-K/K Classrooms
- Specialized Learning (labs)
- Special Education
- Media Center
- Dining and Food Service
- Multi-Purpose
- Student Restrooms
- Circulation
- Building Services

EXISTING ELEVATIONS

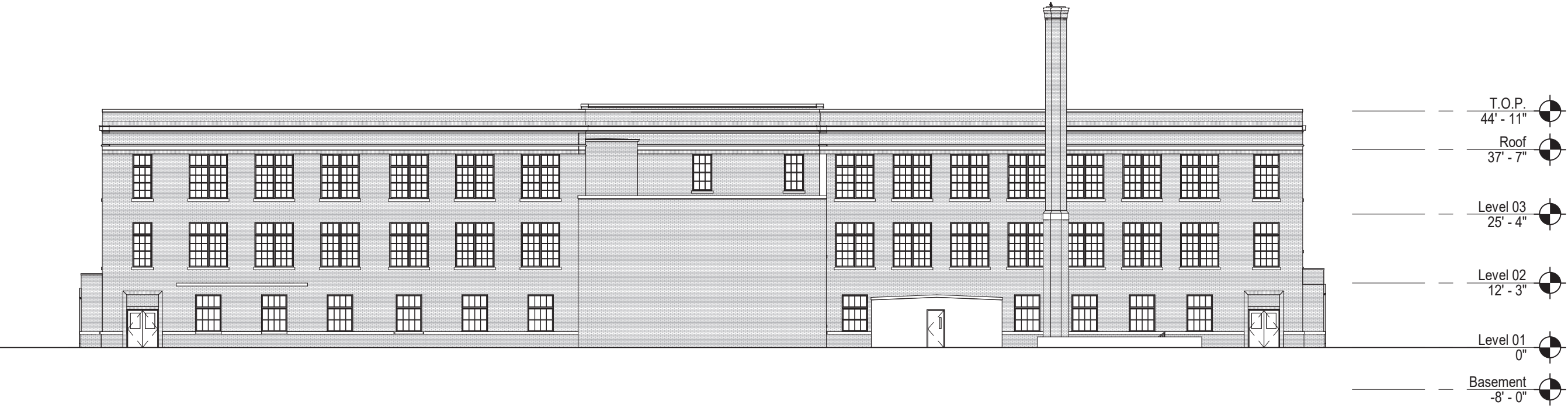


SOUTH ELEVATION

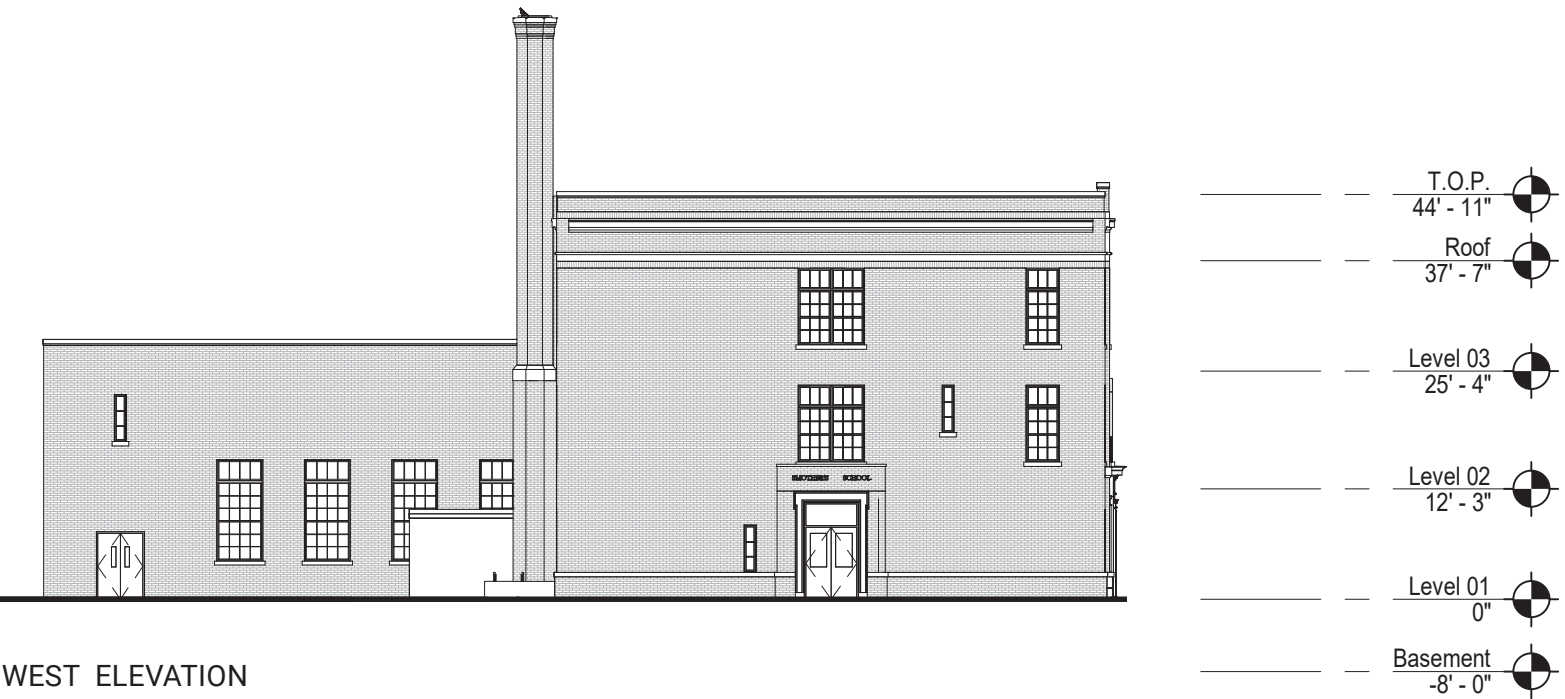


EAST ELEVATION

EXISTING ELEVATIONS



NORTH ELEVATION



WEST ELEVATION

DESIGN VISION

Design Approach & Smothers' Legacy

Our vision for the modernization of Smothers Elementary is grounded in the School's history, its educational mission and its goals for the future as well as the legacy of its namesake, **Henry Smothers**. Henry Smothers was the founder of one of the first and longest operating schools for African-American students in the District of Columbia. His efforts are extraordinary not only given the resistance and fight against Black advancement, especially education, but also is exceptional in that Smothers Elementary existed alongside other DC schools named after slave owners and members of the Confederacy. Smothers' legacy is all the more poignant 200 years later amidst the backdrop of Black Lives Matter.



Smothers School in 1960

Design Vision

One of our initial design notions was the concept of **weaving together new and existing structures, programs and approaches**. Just as Smothers' mission is the development of the whole child, our intention was to develop a new building framework which supports, highlights and joins together the School's various educational, social, emotional and physical spheres. Coupled with Net Zero Ready requirements, we saw the project's potential as a progressive and dynamic representational model.

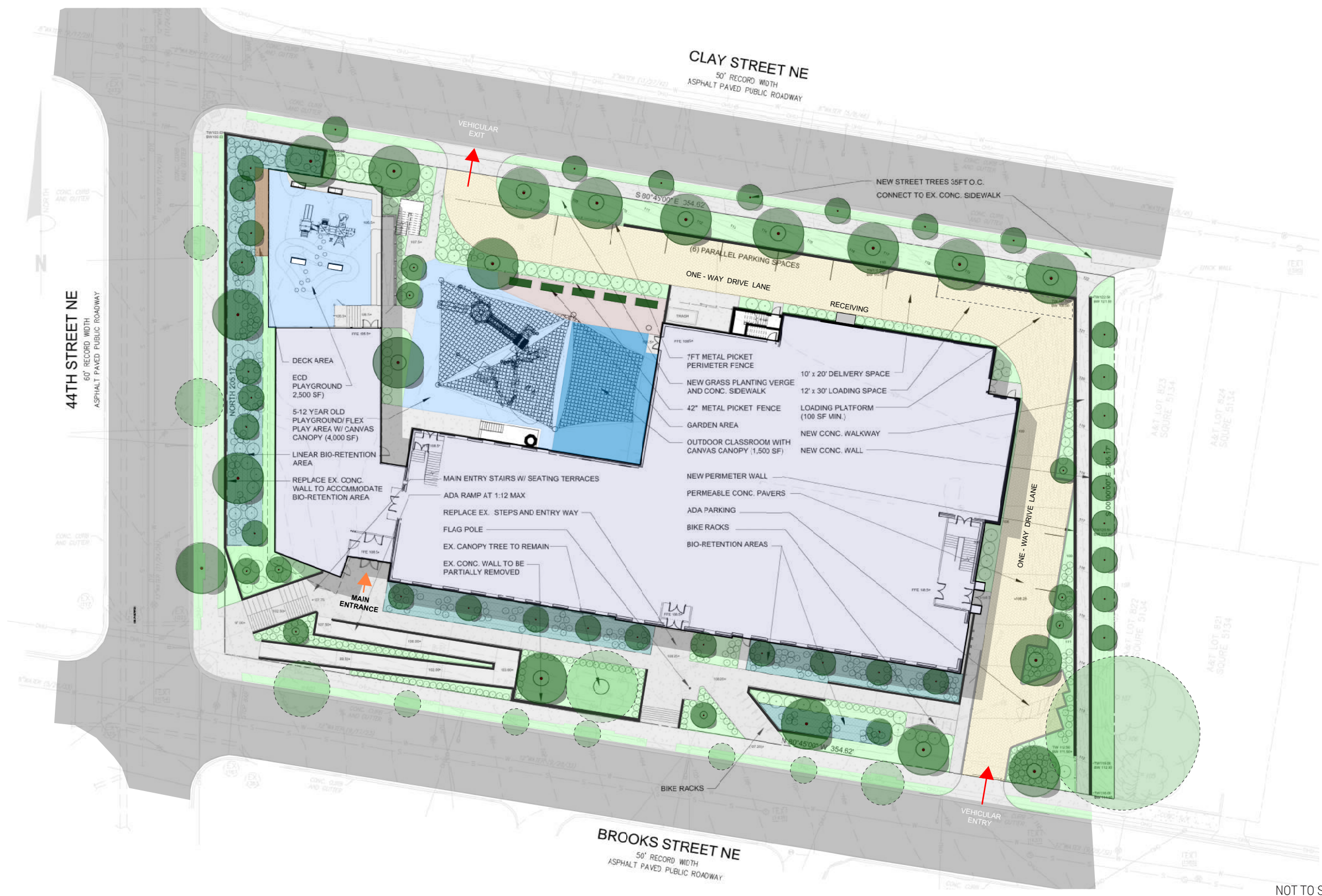
This '**weaving together**' is evident in the overlapping use of new construction materials against the traditional brick of the existing building. On the west facade, perforated metal sunshade devices afford the luxury of large windows in the classrooms while controlling solar heat gain. These openings result in windows similar in size to the gracious scale of those in the existing building.

New construction facades will be comprised of either **brick veneer** or **fiber cement panels** as a means to continue our conceptual themes as well as to differentiate massing and establish a dialogue with the existing building. Vertical bands of fenestration are introduced to some of the new building facades as a means of enhancing the thermal performance of the building while further expanding the fabric of the overall building design as the school continues to grow towards the future.

Another aspect of weaving is the incorporation of the pedimented portal at the west end of the historic school. The School's new glazed entry lobby features this portal as a focal point.



SITE PLAN - CONCEPT DESIGN APPROVAL



NOT TO SCALE

DESIGN VISION - CONCEPT DESIGN APPROVAL

CONCEPT DESIGN for the Smothers Elementary School was presented to the Commission during the October 2020 hearing. The Concept was approved by the Commission with the following comments:

Design Concept

The Commission acknowledged and agreed with the design theme and goals of the project which touched on the Interweaving of Smothers ES deep history in the community and multiple generations that have passed through its doors. This is a theme which continues to be carried in the Final design with the interconnecting of new and pre-existing materials, contemporary and traditional elements, all contributing to a school design that embraces past, present, and future,.

Corner Entry and Primary Approach

The Commission agreed with the corner entry approach, in particular, the use of landscaping and site features to address and engage the existing topography as a gesture towards creating a school community space. As part of this experience, we are introducing markers at various locations on these paths where historical moments related to Henry Smothers life are displayed. DGS and DCPS has engaged with the Public Art program to further define these opportunities.

West Facade Sunscreen

The Concept Design proposed a brise soleil along the western facade made of brick. The Commission cited some concern regarding the constructability of this approach and advised careful study if pursued. The Final design is now proposing a far simpler approach for shading by utilizing vertical perforated aluminum fins.



Concept - (Expanded Landscaped Scheme)



West Elevation - Proposed Brick Brise Soleil



Gymnasium Addition -Clay Street View



North Elevation - Interconnection of traditional brick and new materials.



West Addition -View from Play Area




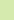





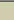


SITE PLAN



FIRST FLOOR



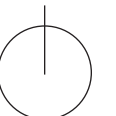
K-12 Department

-  Core Academic Areas
-  Core Academic Areas -
Discovery Commons
-  Library Spaces
-  Visual Arts Spaces
-  Performing Arts Spaces
-  Physical Education Spaces
-  Administrative Spaces
-  Health Suite Spaces
-  Food and Dining Spaces
-  Multi-Purpose
-  Building Support
-  Circulation

Room Labels

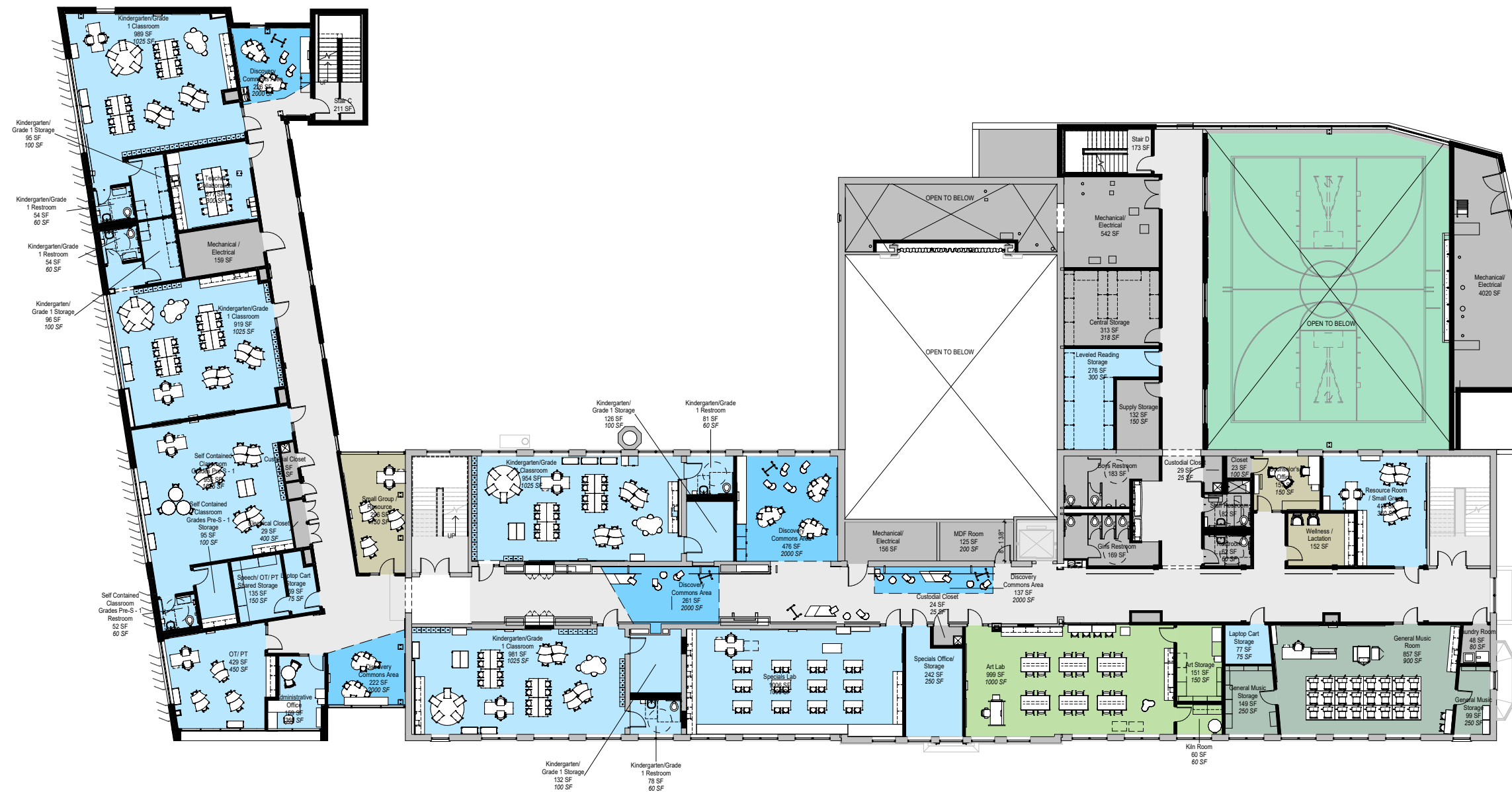
Room Name
Room Area
ED SPEC Area

NORTH




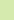





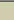




NOT TO SCALE

SECOND FLOOR



K-12 Department

-  Core Academic Areas
-  Core Academic Areas -
Discovery Commons
-  Library Spaces
-  Visual Arts Spaces
-  Performing Arts Spaces
-  Physical Education Spaces
-  Administrative Spaces
-  Health Suite Spaces
-  Food and Dining Spaces
-  Multi-Purpose
-  Building Support
-  Circulation

Room Labels

Room Name
Room Area
ED SPEC Area

NOT TO SCALE



THIRD FLOOR



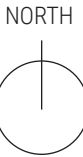
K-12 Department

- Core Academic Areas
- Core Academic Areas - Discovery Commons
- Library Spaces
- Visual Arts Spaces
- Preforming Arts Spaces
- Physical Education Spaces
- Administrative Spaces
- Health Suite Spaces
- Food and Dining Spaces
- Multi-Purpose
- Building Support
- Circulation

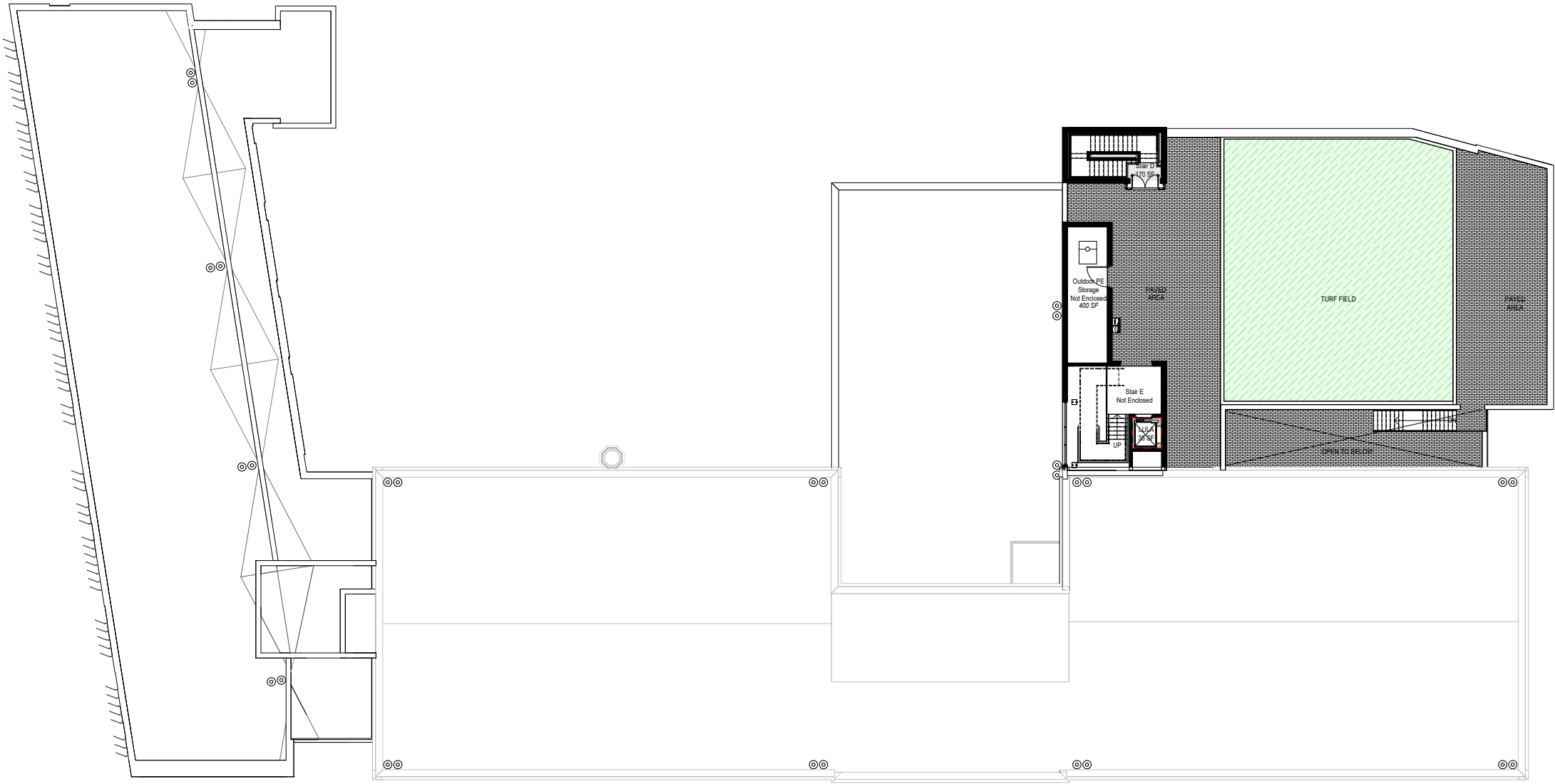
Room Labels

Room Name
Room Area
ED SPEC Area

NOT TO SCALE



ROOF



K-12 Department

- Core Academic Areas
- Core Academic Areas - Discovery Commons
- Library Spaces
- Visual Arts Spaces
- Performing Arts Spaces
- Physical Education Spaces
- Administrative Spaces
- Health Suite Spaces
- Food and Dining Spaces
- Multi-Purpose
- Building Support
- Circulation

Room Labels

Room Name
Room Area
ED SPEC Area

NOT TO SCALE



DESIGN VISION



Corner Site Entry

ELEVATIONS



SOUTH ELEVATION



NORTH ELEVATION

ELEVATIONS



WEST ELEVATION



EAST ELEVATION



NORTH VIEW - PERFORATED METAL PANEL STAIR

VIEWS



MAIN ENTRY APPROACH



CLAY STREET VIEW - GYM ADDITION



OUTDOOR PLAY AREA

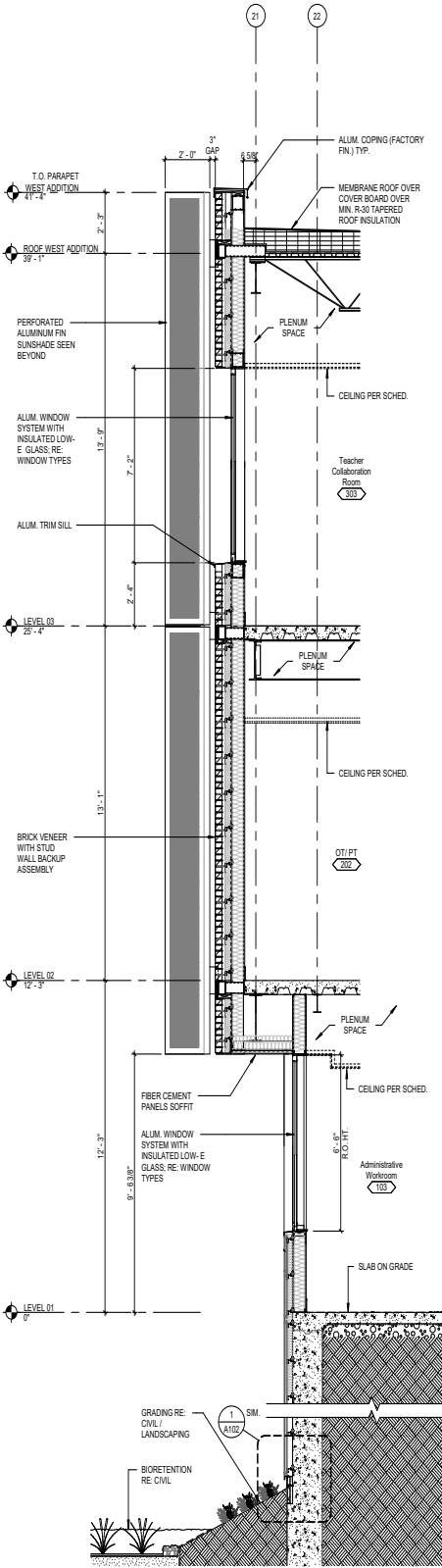


WEST VIEW - GYM ADDITION

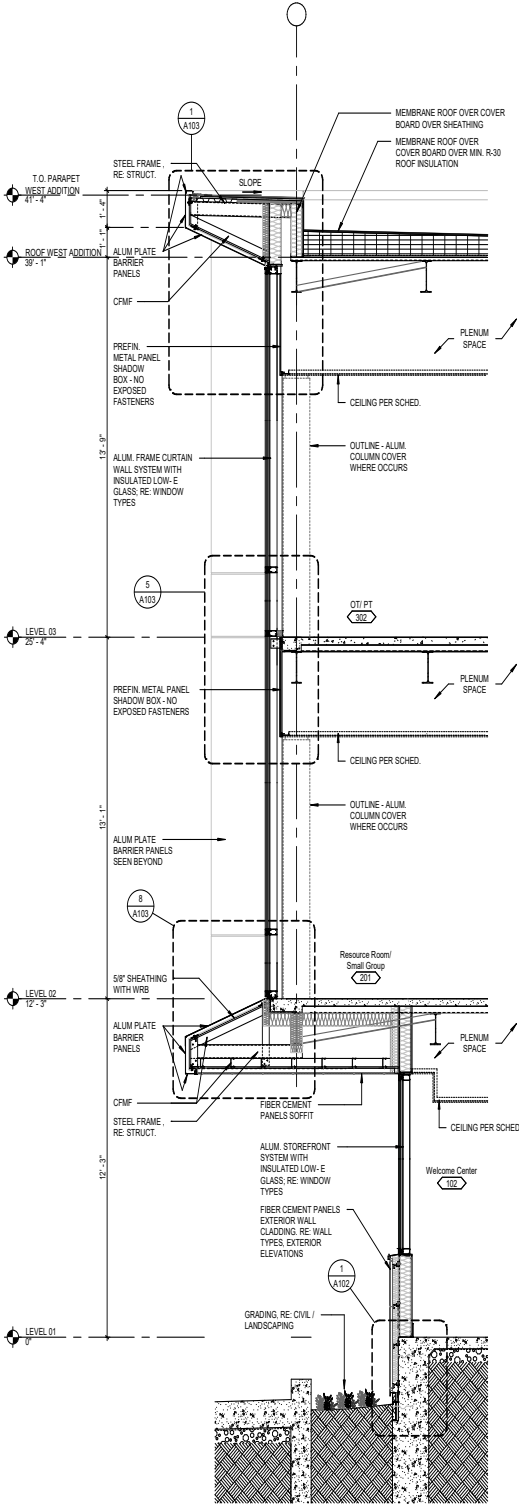


DRIVEWAY

DESIGN VISION



Section Detail - West Wall Shading



Section Detail - South Extension



Perforated Metal Panels



Brick Color and Pattern



Fiber Cement Panel Color and Joints

Exterior Design - Materials

The modernization of Smothers Elementary calls for a careful knitting together of new and existing structures, programs and approaches. Just as Smothers' mission is the development of the whole child, our intention is to create a new building framework which supports, highlights and joins together the school's various educational, social, emotional and physical spheres... a representational model signaling a commitment to a dynamic and progressive future.

We do this most evidently through the treatment of the classrooms in the new construction west wing. Located with its primary street elevation facing west due to tight lot constraints, this difficult orientation is turned into an opportunity. A system of vertical shades, modulate the classrooms' lower-sun exposure and becomes a key feature of the building. These screens (held off the façade three inches) allow for large windows in the classrooms without compromising natural lighting and views. The use of perforated metal is repeated at other locations around the building, including at the new stairway adjacent to the open play areas.

This high-performance strategy is intended to confront the project's goal of Net Zero readiness head-on; resulting in a solution which is ultra-functional, enduring, contemporary yet contextual, while carrying within it inherent variety and playfulness.

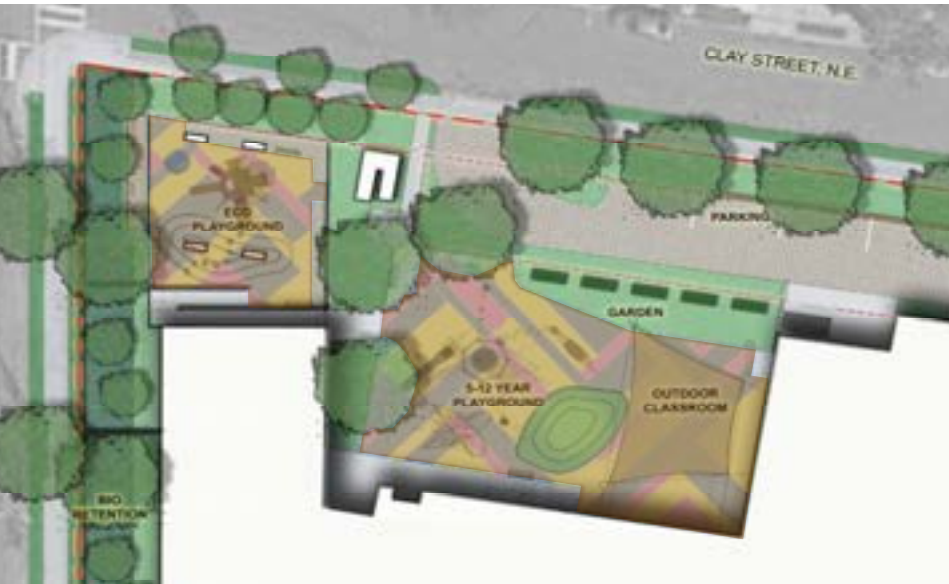
The proposed base exterior material at the new additions, including underneath the shading devices is brick veneer. This material weaves the existing building's traditional materiality into the newer west wing addition thereby creating a symbolic interconnection between new and existing. This concept is also applied to the east addition where the mix of brick and fiber cement further reinforce the theme of interweaving.

DESIGN VISION



ECE Playground

In order to maximize limited outdoor space, the interior program is arranged to accommodate a covered play area for the Early Childhood Education students while classrooms for upper grades are located above. This play zone is made more dynamic with the use of angled structural columns which also provide an opportunity to introduce color into this space.



NE Exterior Stair

The egress stair is conceived as an entirely open exterior element with a roof covering and wrapped in a transparent perforated metal screen. A locked egress door at each of the two upper levels provides security.



Perforated Panel

Celebrating Henry Smothers

As described previously, we feel the best ways to honor Henry Smothers legacy is to create open, light-filled and joyful spaces for the students, teachers and visitors as well as strategies which reinforce a generational connection to the community. As we continue to develop the design, working with the dedicated team at the school, our goals are to create a fun and nurturing environment that is less institutional and more child-centric in its focus. Classes are grouped into age-appropriate cohorts, play is prioritized over parking on the site, and the school serves as a part of the **tapestry of its community and legacies**, woven into this prominent corner. We hope we have in large part met these goals.



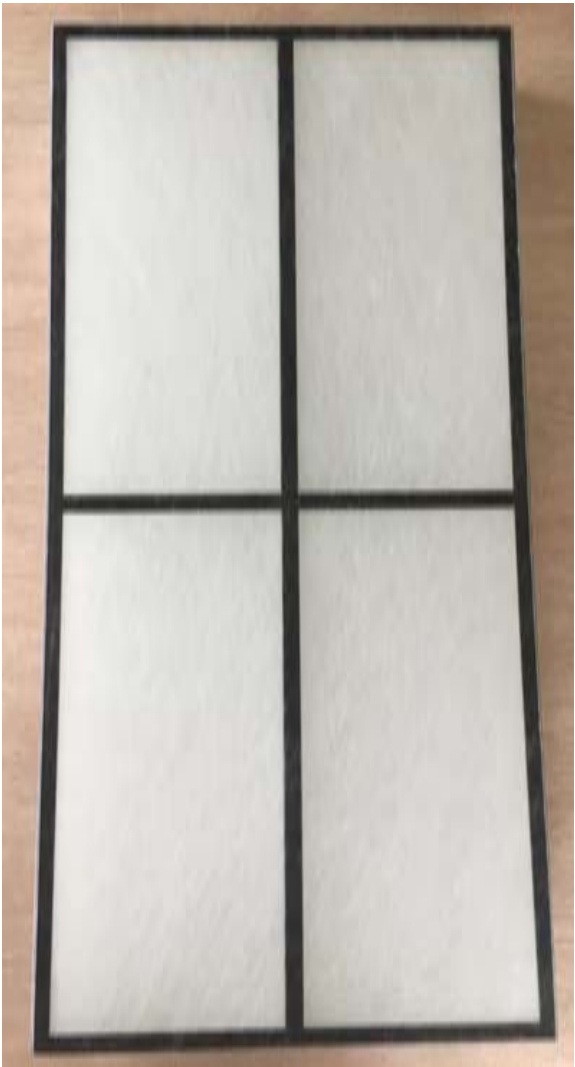
MATERIALS



New Brick

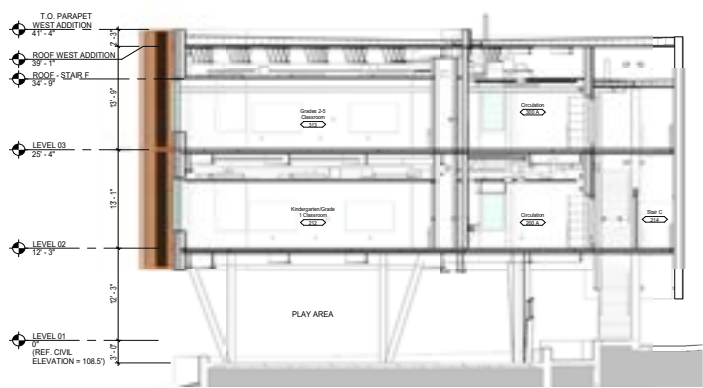
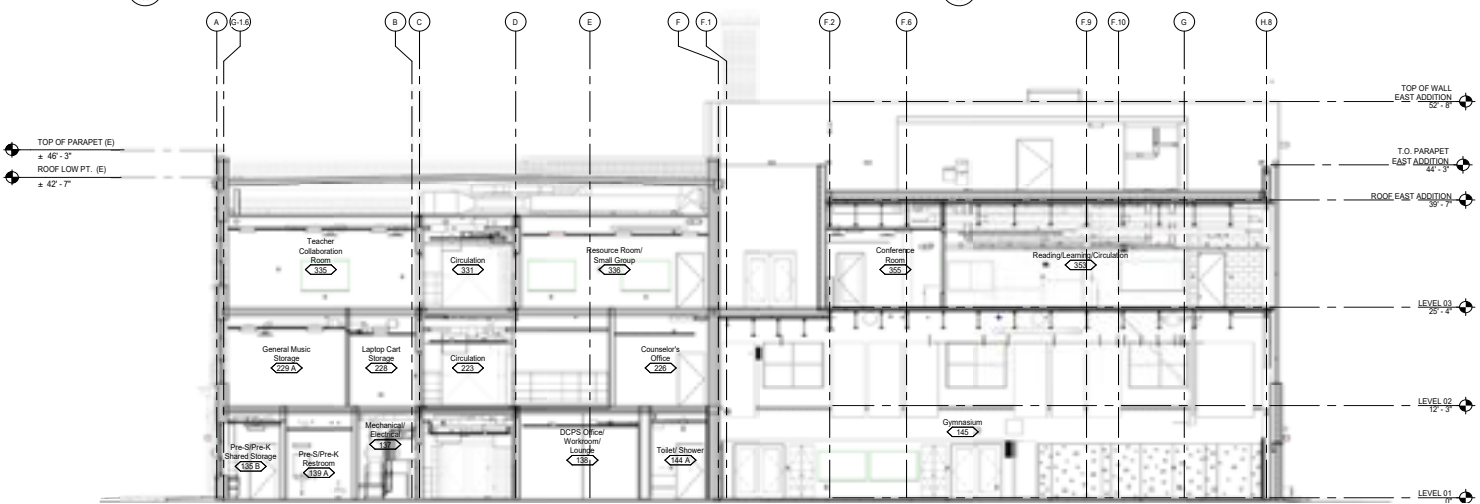
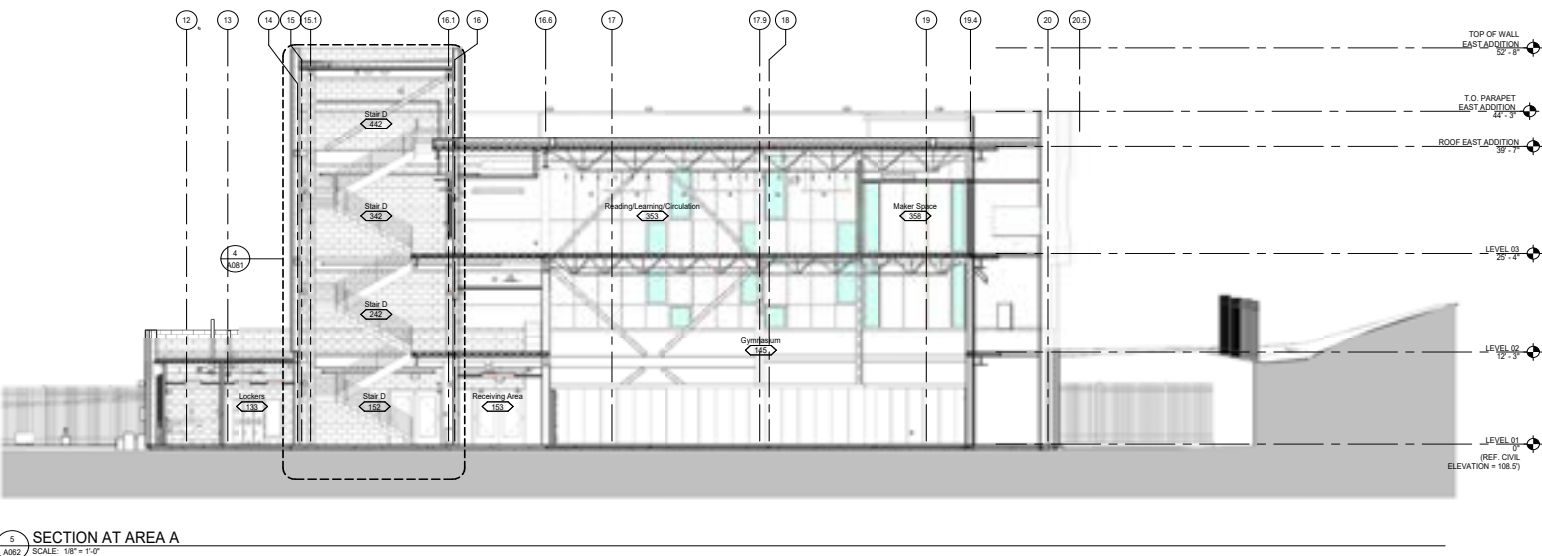
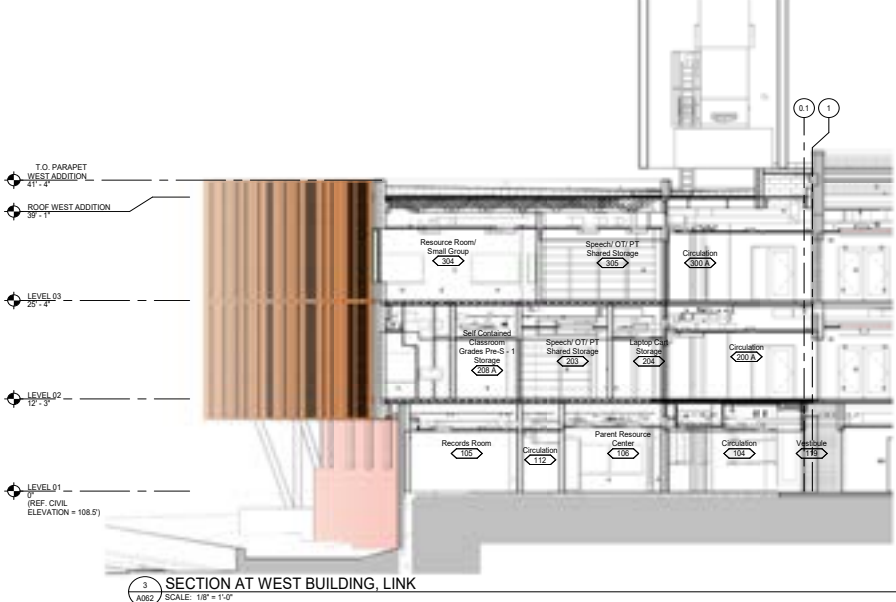
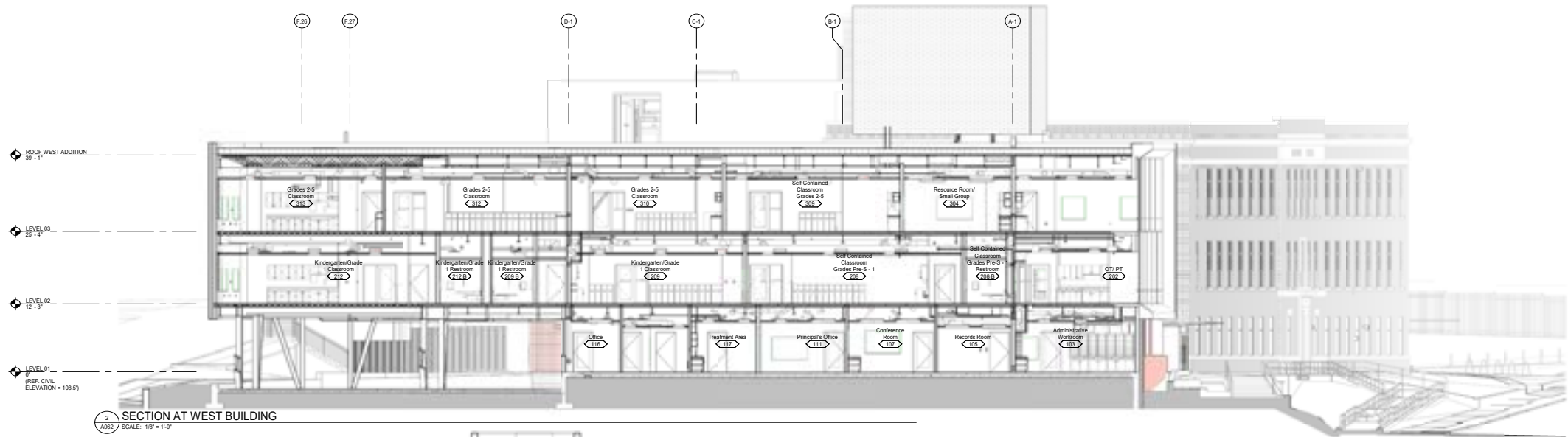
Fiber Cement Panel

Perforated Metal Color and Pattern

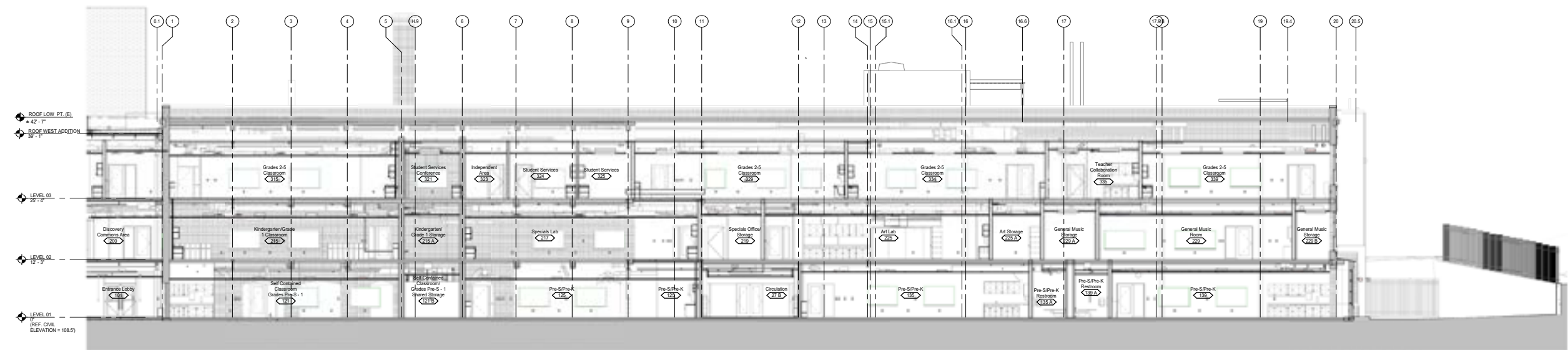


Translucent Panels

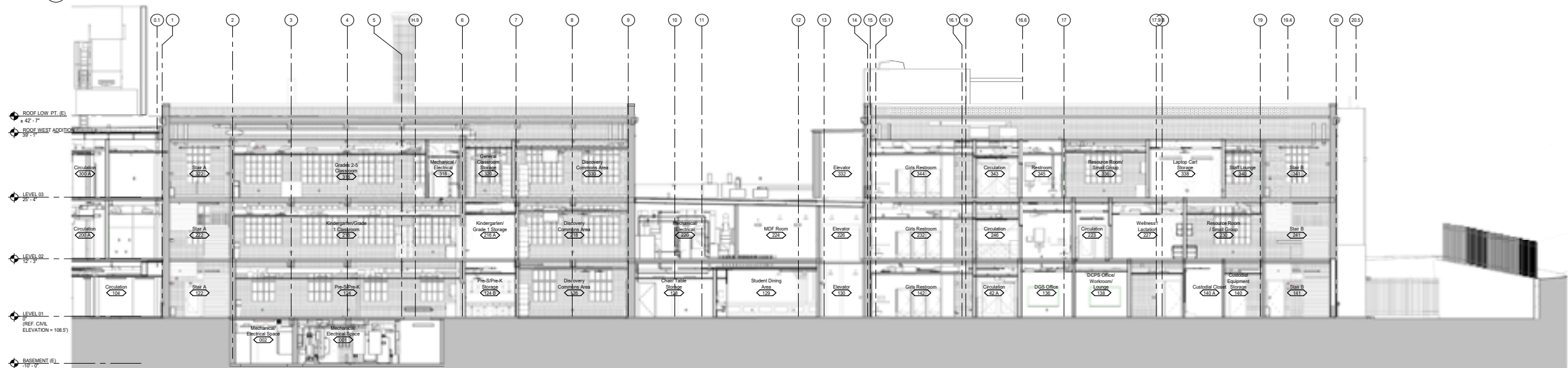
SECTIONS



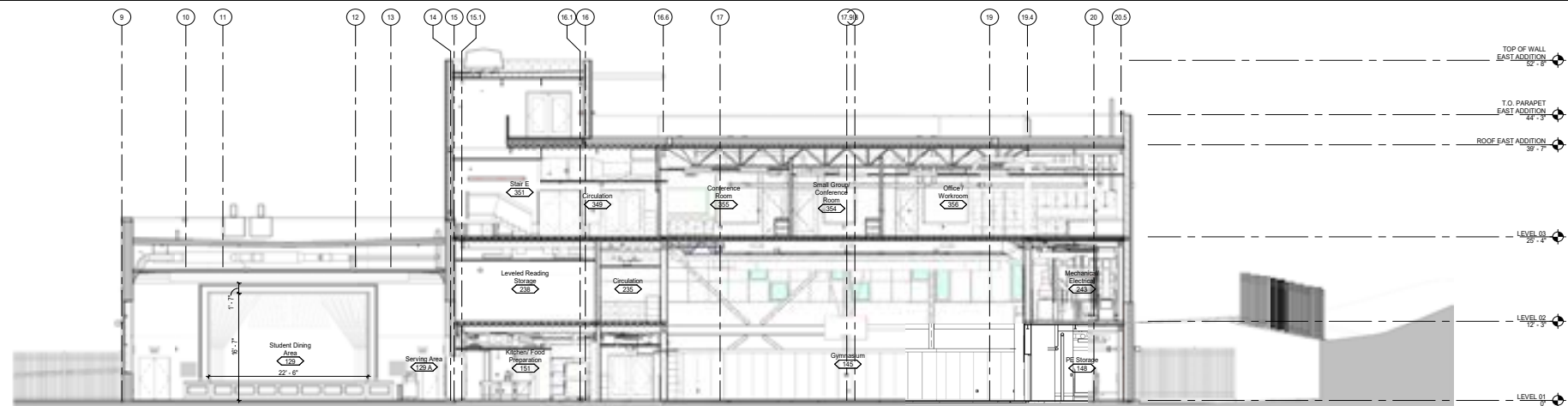
SECTIONS



1 SECTION AT AREA A EXIST. BLDG. EAST - WEST
A061 SCALE: 1/8"=1'-0"



2 SECTION AT AREA A EXIST. BLDG. EAST - WEST
A061 SCALE: 1/8"=1'-0"



NOT TO SCALE