

U.S. COMMISION OF FINE ARTSDGS MACARTHUR HS

MACARTHUR HIGH SCHOOL

FINAL SUBMISSION

19 -SEPTEMBER -2024

Project Goals

- Provide civic presence as a high school
- Unify exterior design and create strong sense of arrival
- Improve overall school functionality and expand SF with addition
- Meet DCPS enrollment requirements and minimize disruption to occupied school during construction

Project Scope

- New DCPS High School
- Formerly Georgetown Day Lower School
- Opened in Fall 2023 with 250 Students
- Enrollment will increase throughout project duration; projected total enrollment of 800 students
- Phases of Delivery: Parts 1 and 2, Interior Renovation of Existing Building, Part 3 Building Addition to Meet Full Occupancy Projections

Site Context



OBSERVATIONS

- 1. Mid-block site, with frontage set back from MacArthur Blvd behind residential buildings
- 2. MacArthur Blvd is the only site access road
- 3. Private road Laverock Pl, no site access
- 4. Steep drop off towards Clark Pl and Canal Rd
- 5. Minimal public transit. Bus stops for D6 near West driveway
- 6. Residential neighborhood
- 7. Hardy Recreation Center, DPR facility

Existing Building Expansion History



Existing Street Views



1 West Curb on MacArthur Blvd



2 West Curb on MacArthur Blvd



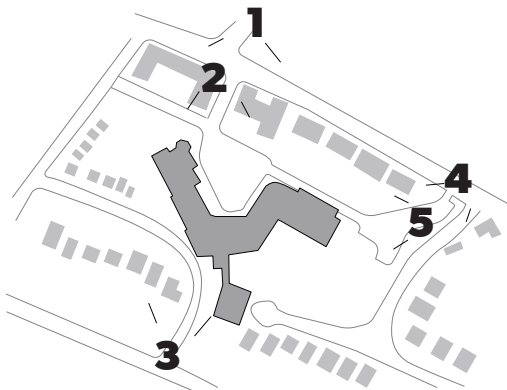
3 View on Clark Pl



4 East Curb on MacArthur Blvd



5 East Curb on MacArthur Blvd



Existing Building and Site



1 70's Annex from Clark Pl



2 80's Expansion from Clark Pl



3 Original Building from Clark Pl



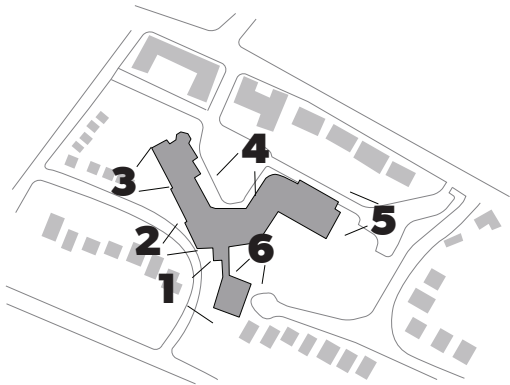
4 Main Entrance from NE



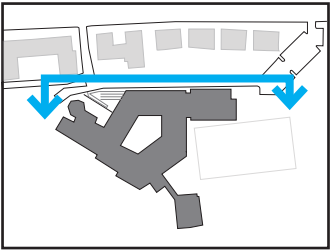
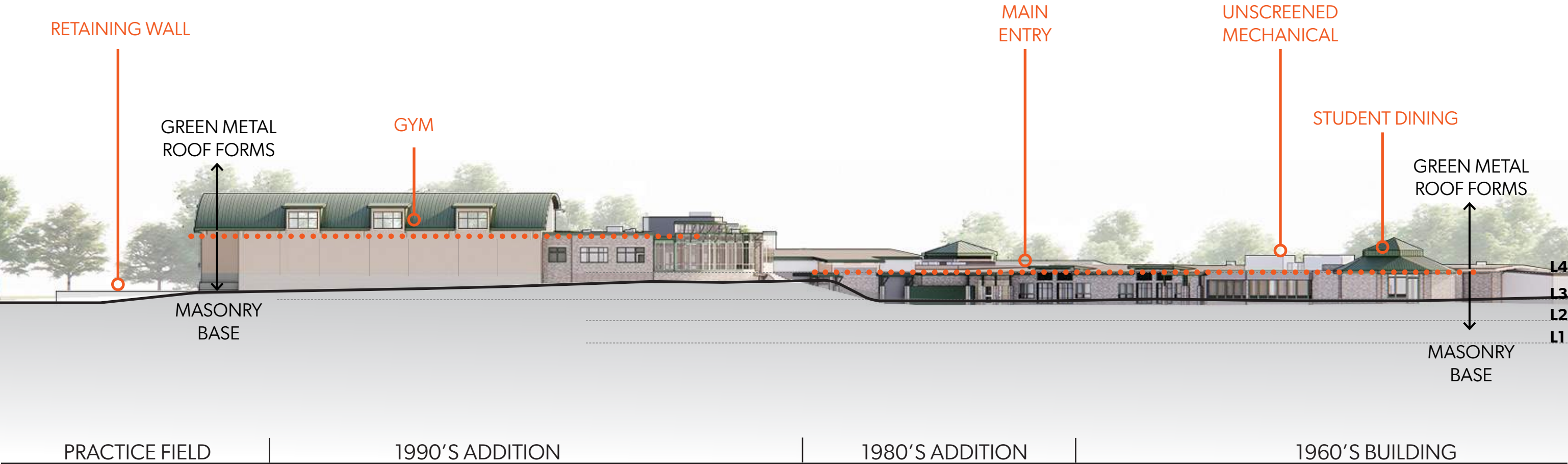
5 Gym from NE



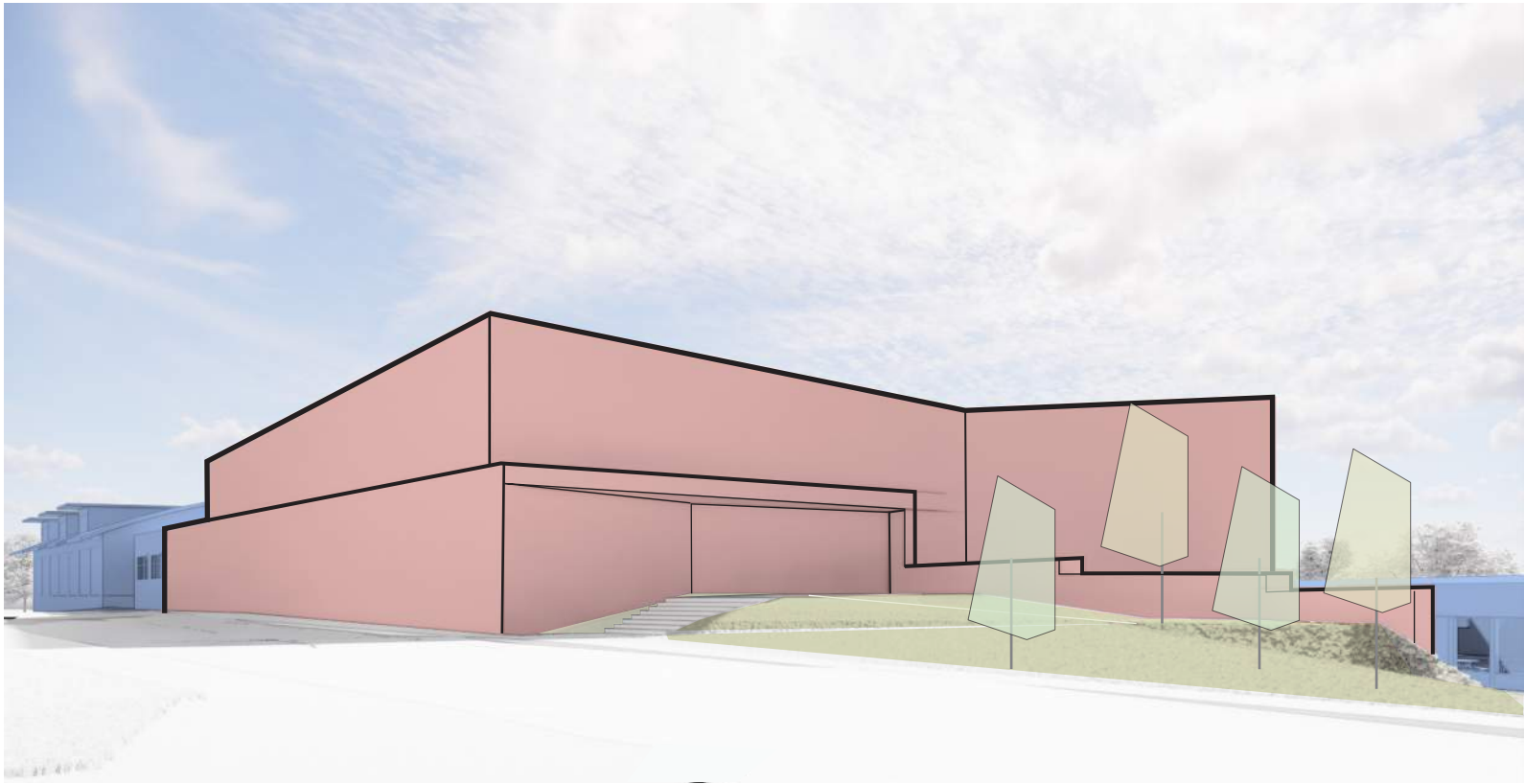
6 70's Annex from NE



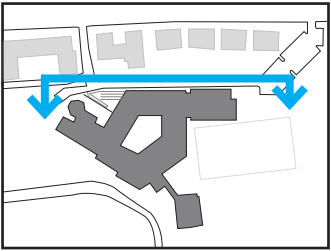
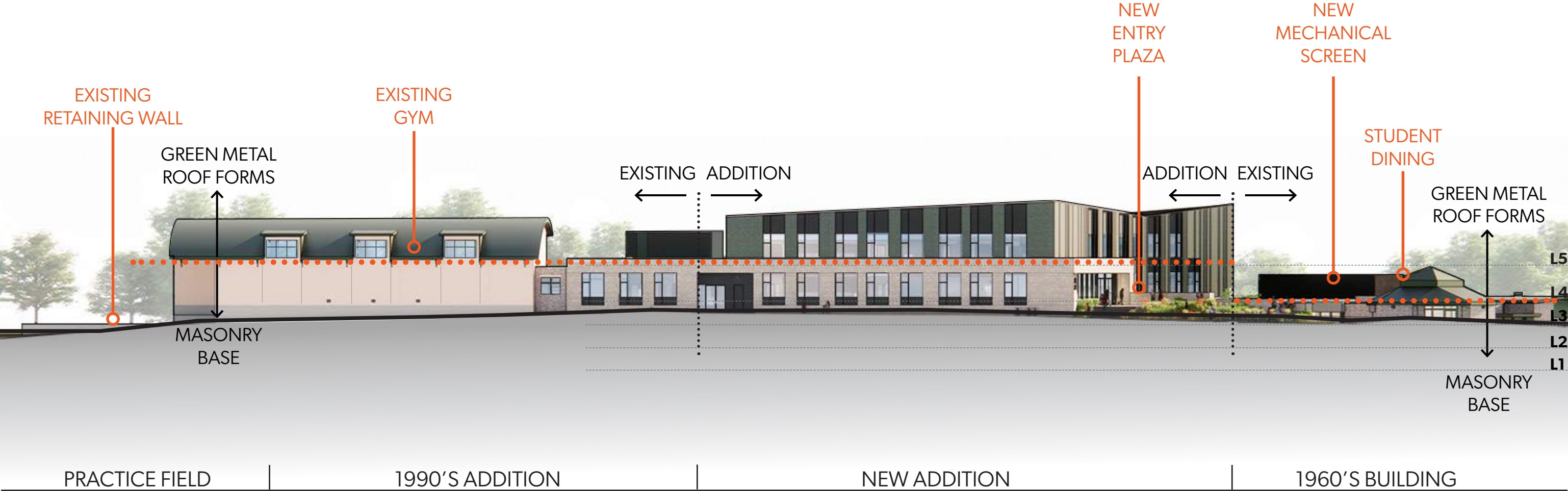
Existing North Elevation



Addition Massing

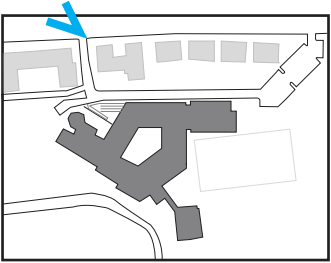
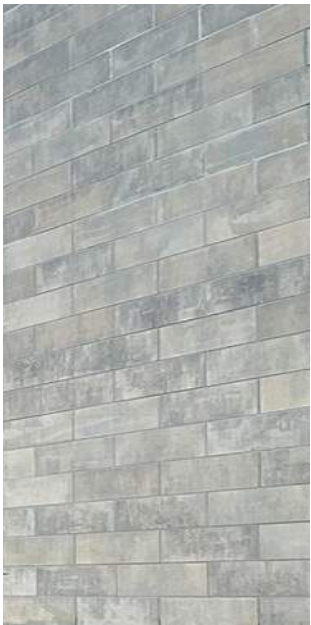


North Elevation



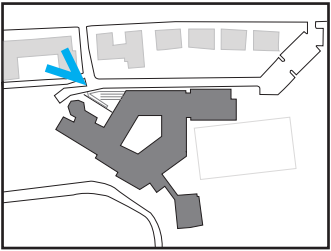
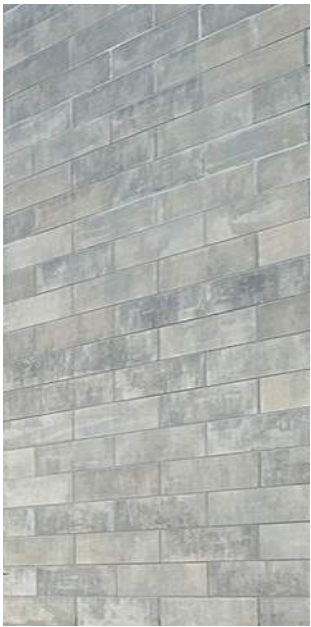
Street View - Building Addition

MATERIALS



Building Addition

MATERIALS



Exterior Materials

PRECEDENT IMAGERY



MASONRY BASE
ARRISCRAFT "IRONSTONE"



METAL PANEL & CURTAINWALL
HARTFORD GREEN



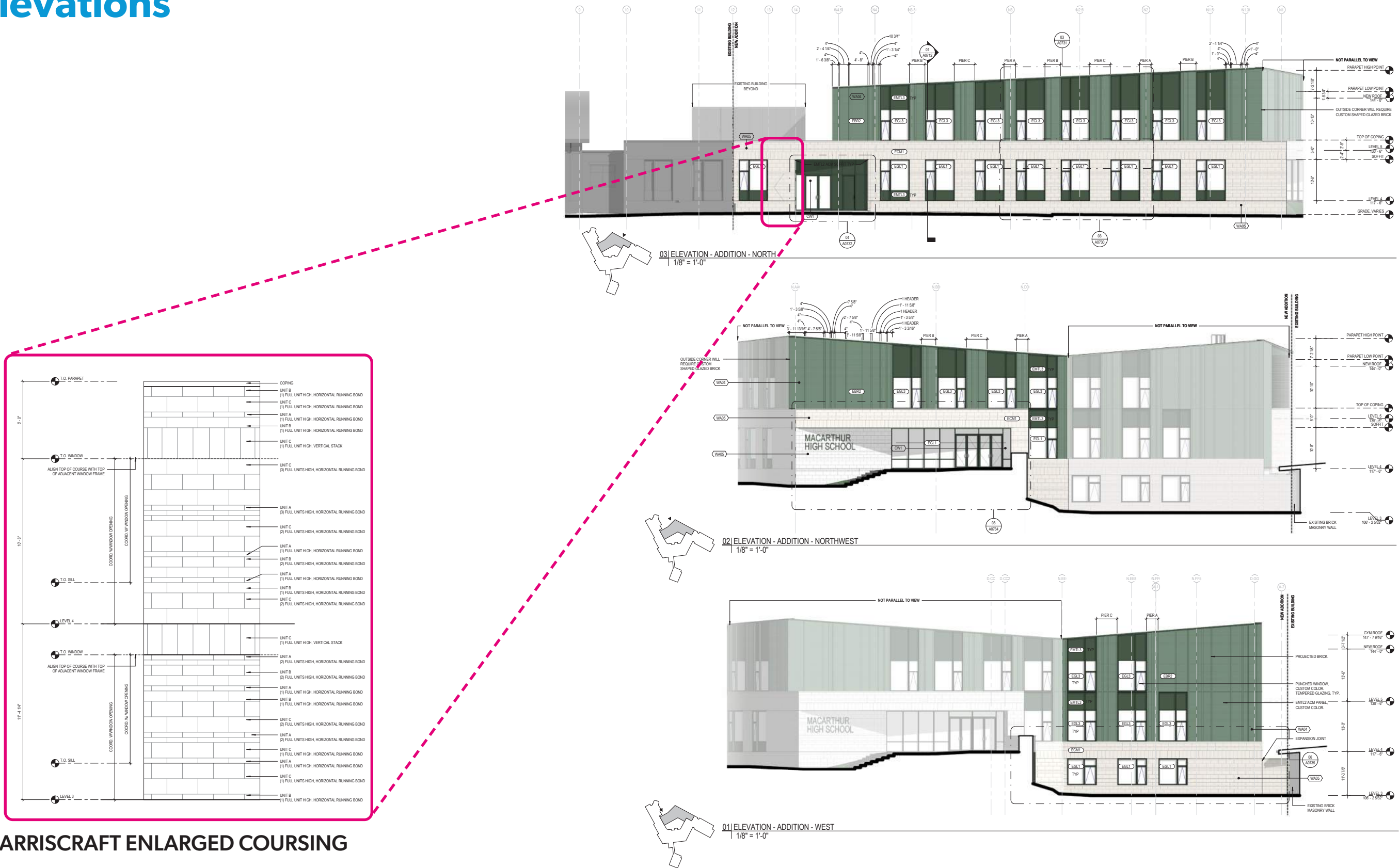
GREEN BRICK MASONRY
CUSTOM COLOR GLAZED BRICK

PROJECT SAMPLES



SAMPLE PALETTE
ARRISCRAFT "IRONSTONE"
HARTFORD GREEN
GLAZED BRICK

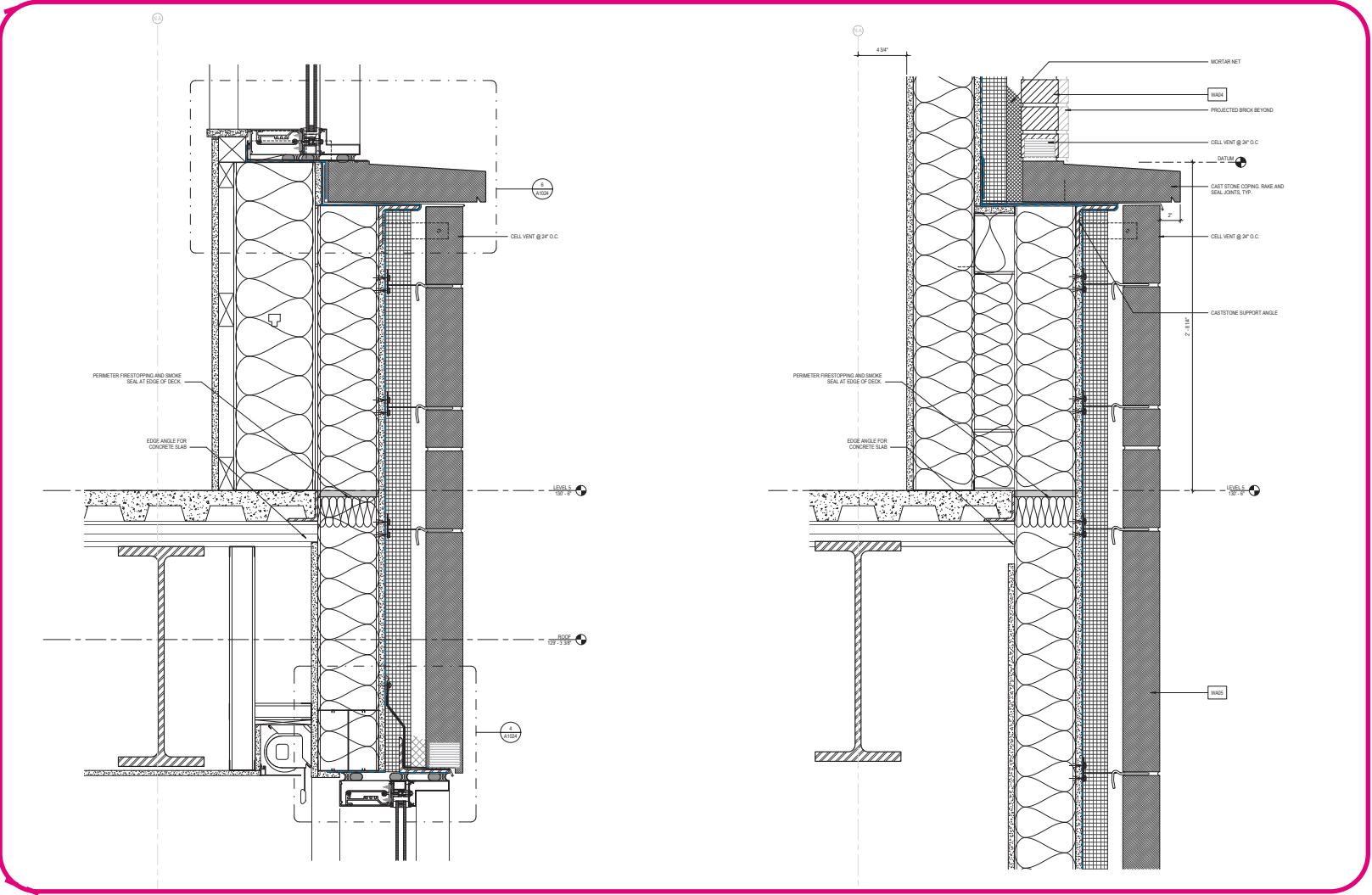
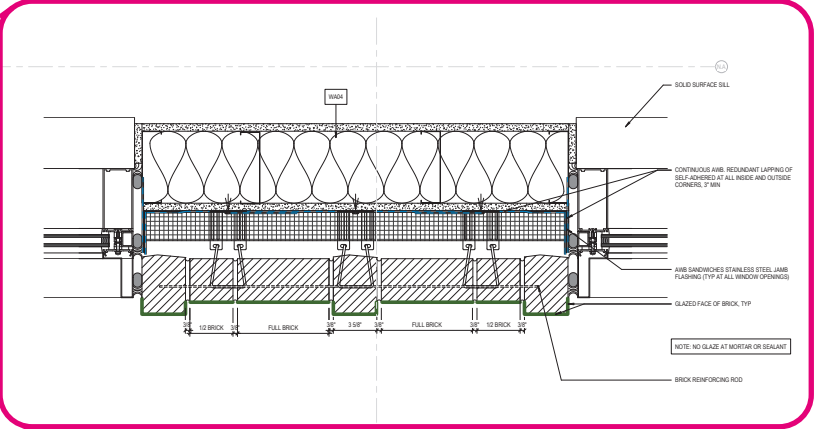
Facade Elevations



Typical Facade Details

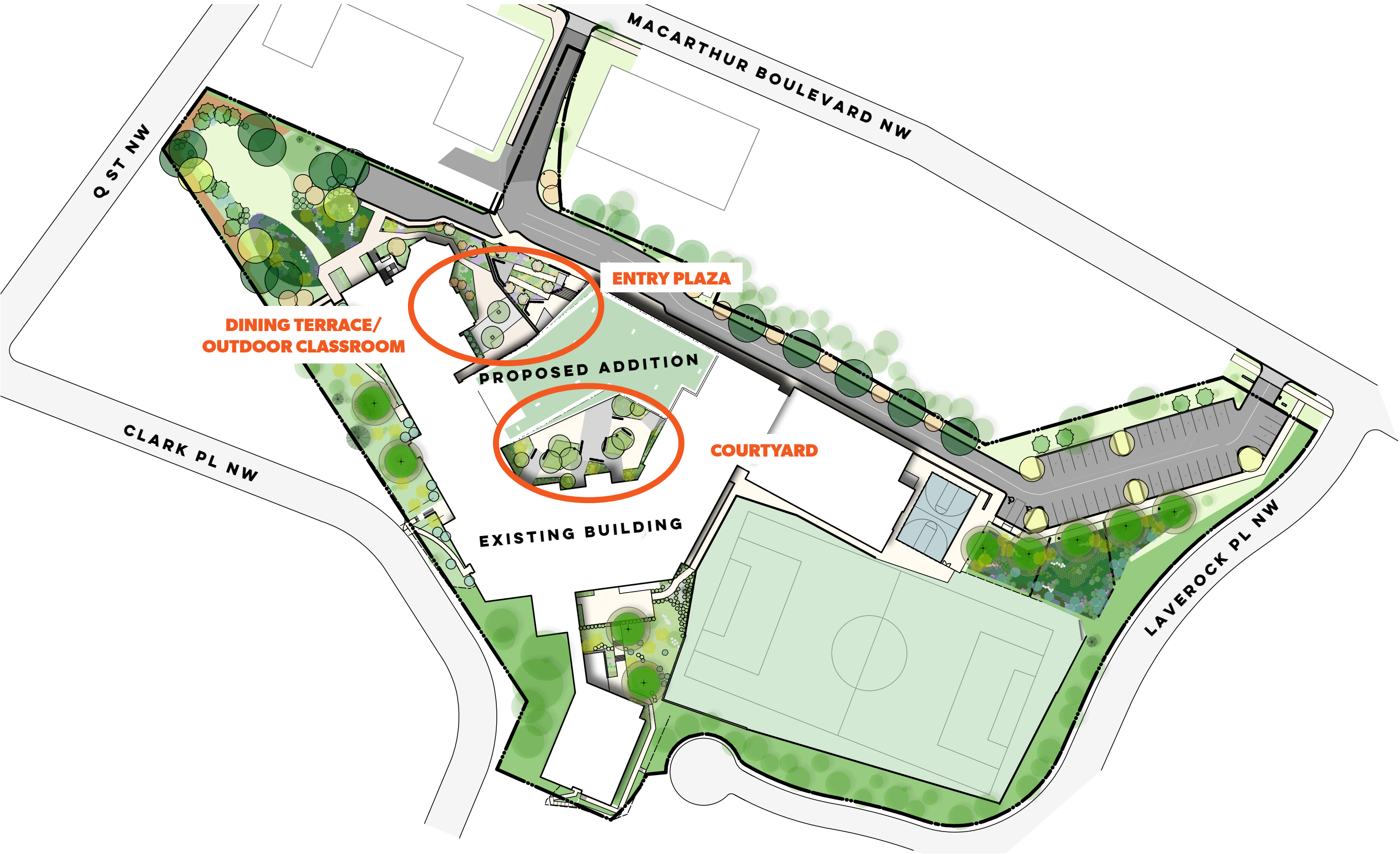


PLAN DETAIL: BRICK PIER

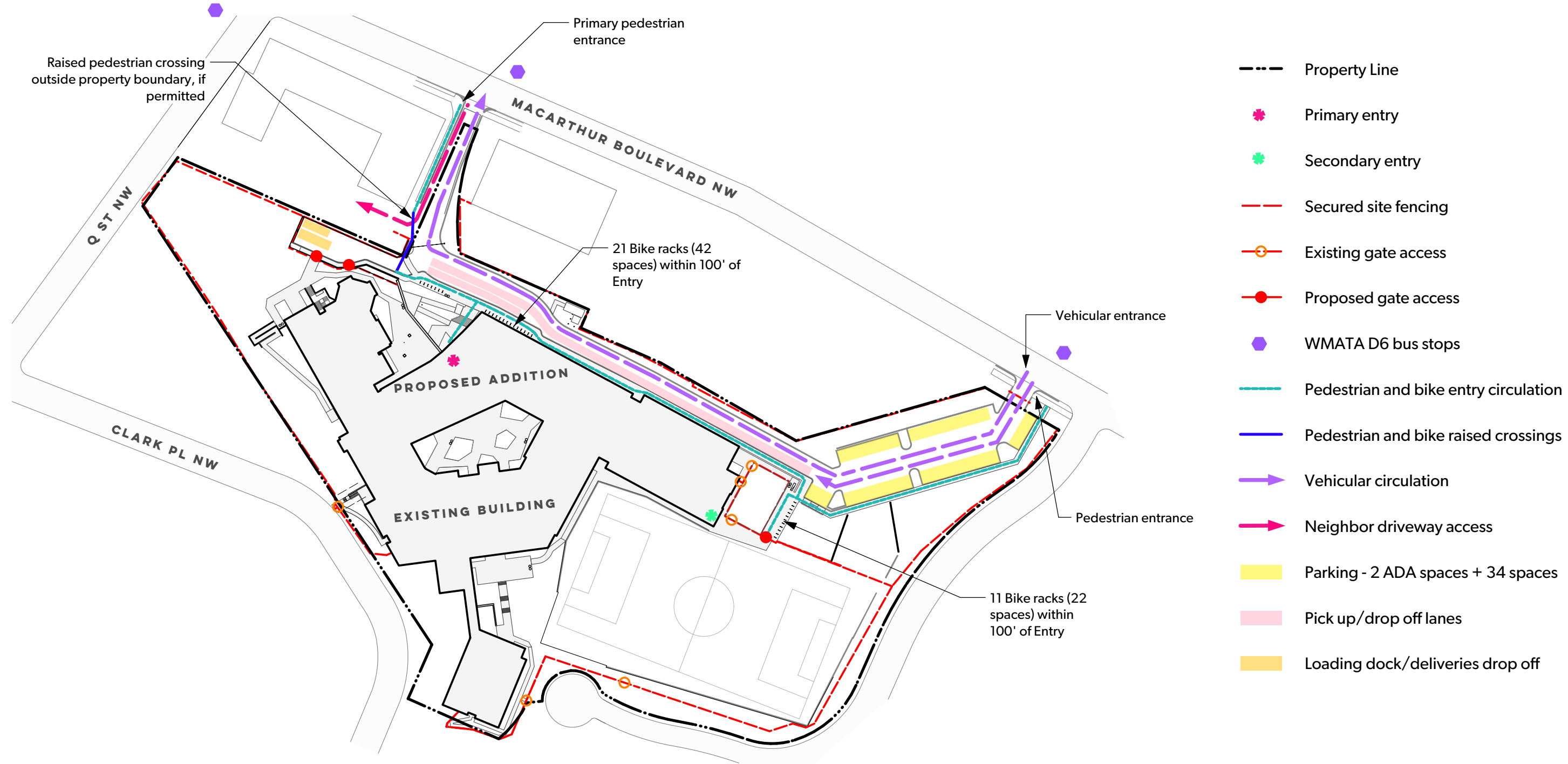


SECTION DETAIL: CAST STONE TO BRICK TRANSITIONS

SITE PLAN



ENTRY CIRCULATION DIAGRAM



BIORETENTION AND PARKING LOT

MACARTHUR BLVD NW



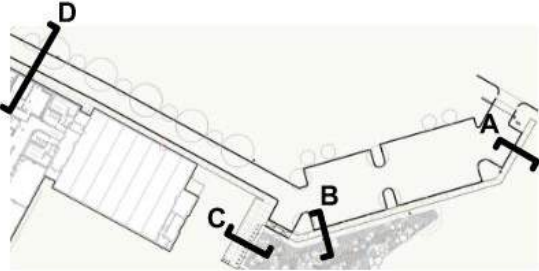
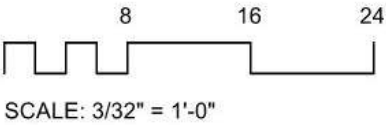
SITE SECTIONS



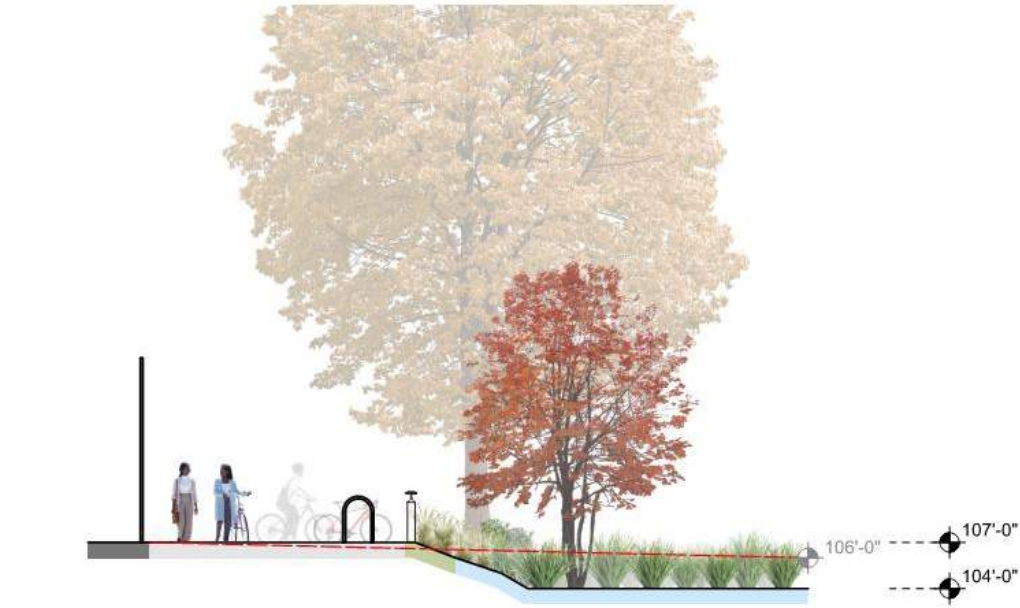
A Section through Entry Walk at Parking Entrance



B Section through Entry Walk at Bioretention Area



KEYPLAN NTS

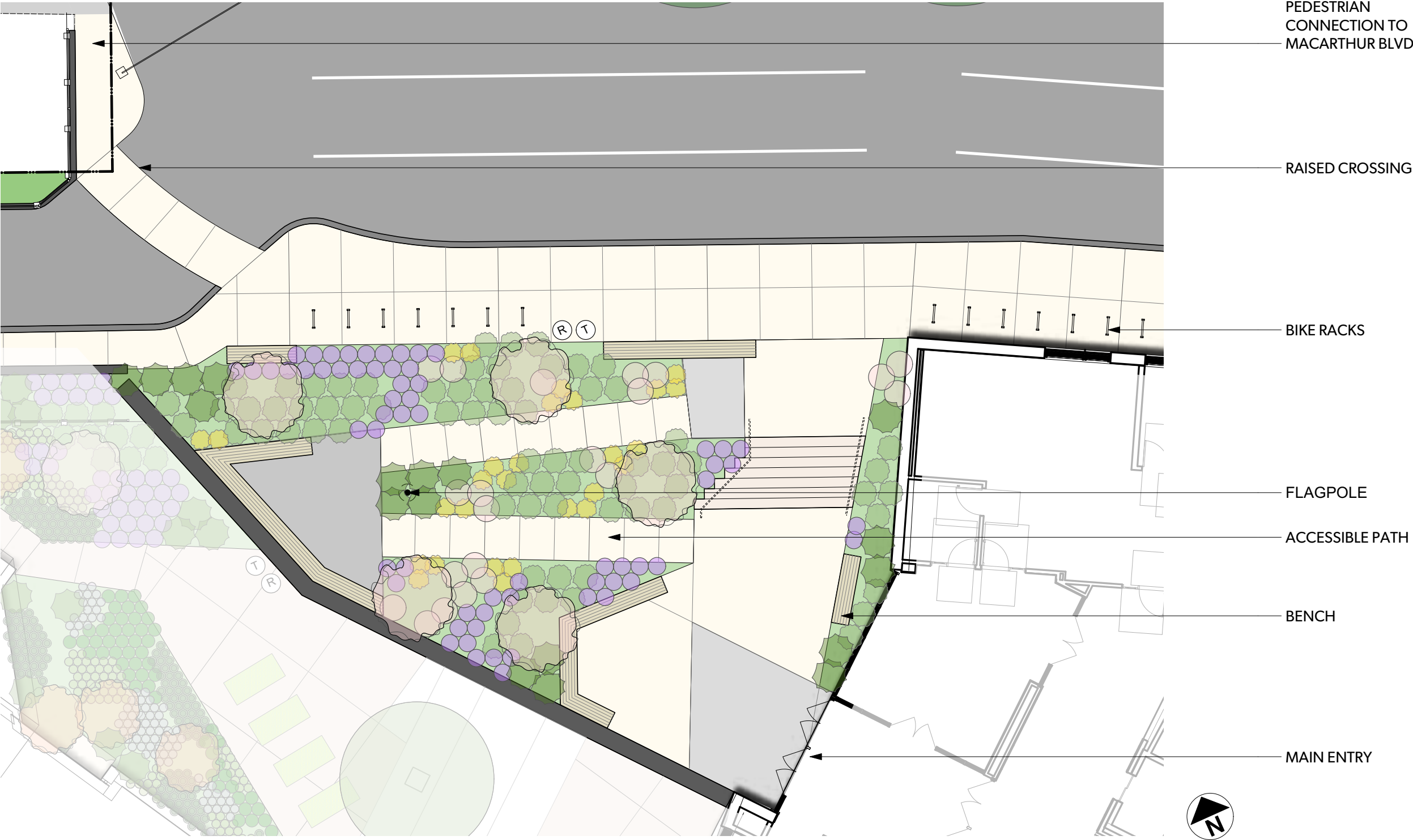


C Section through Bike Parking and Bioretention Area

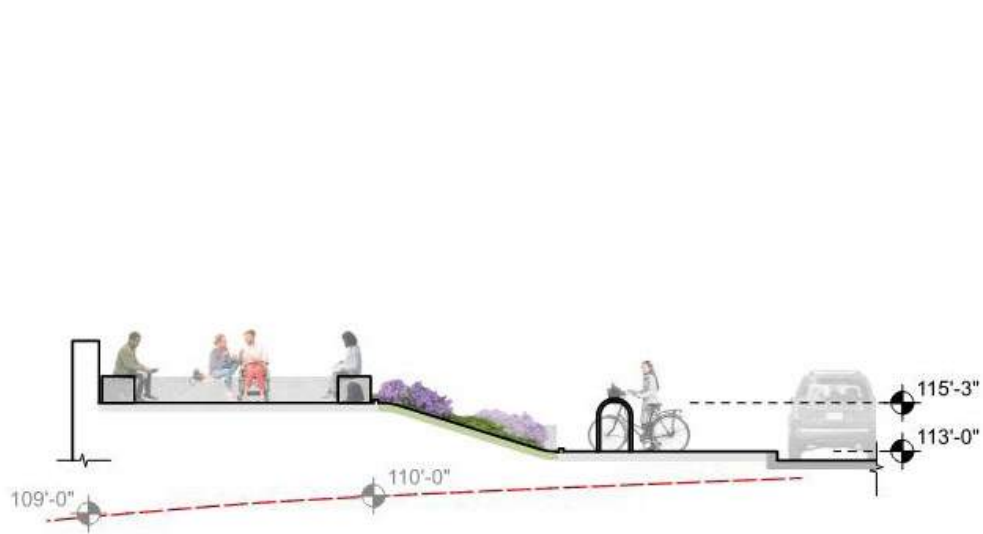


D Section through Gym Entrance

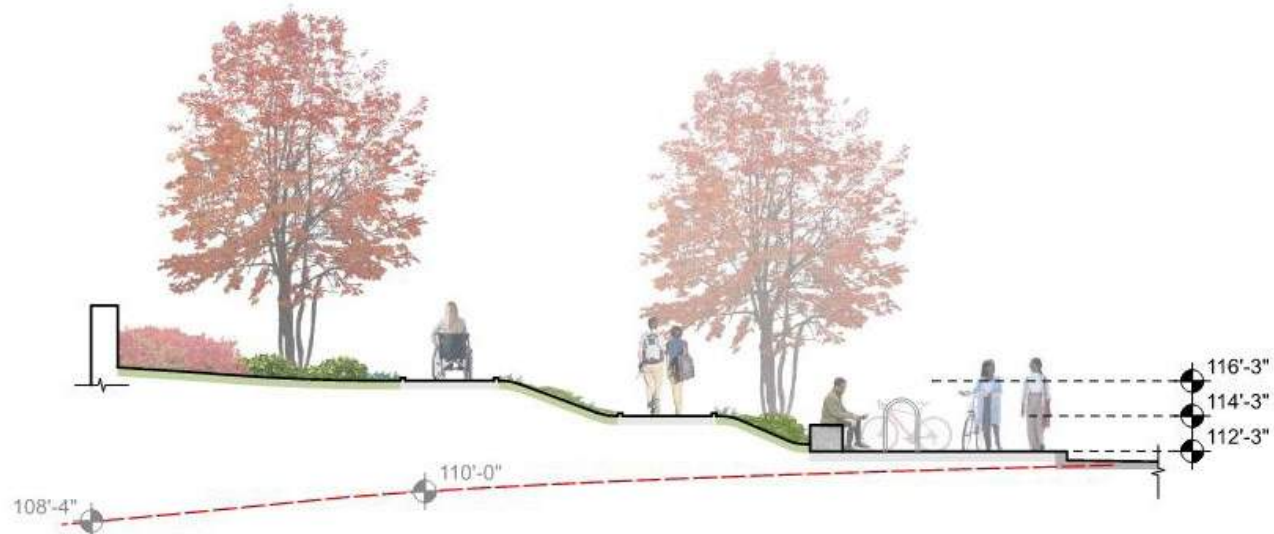
BUILDING ENTRY PLAZA



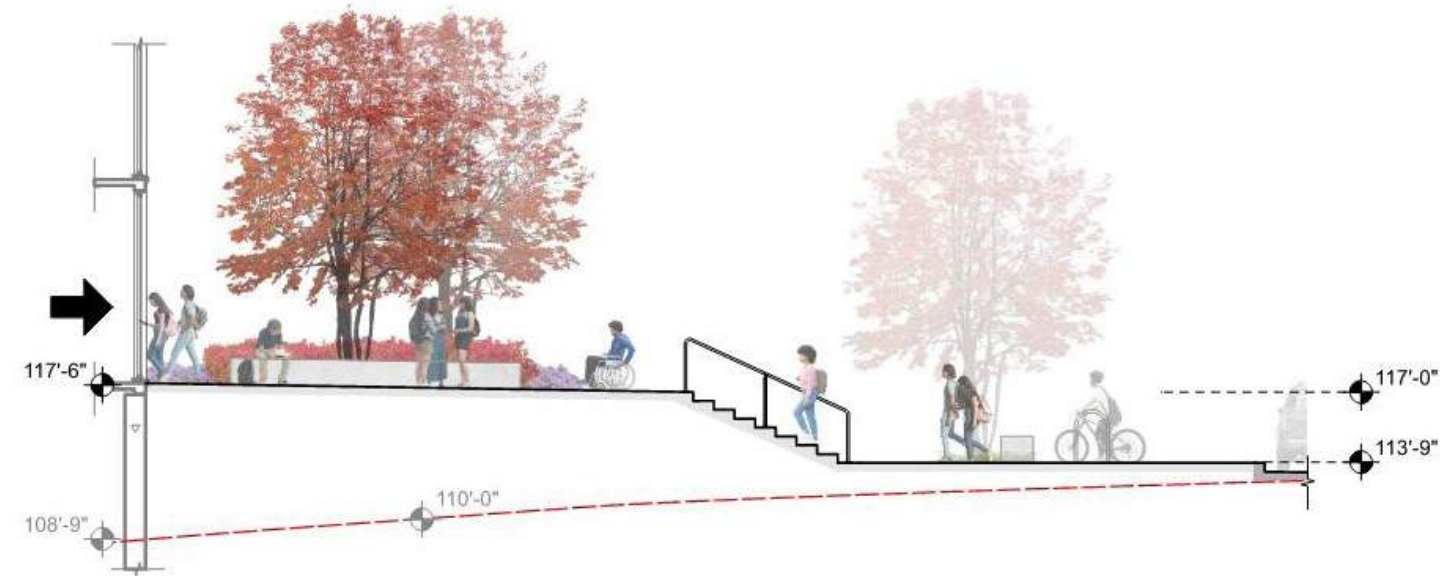
BUILDING ENTRY PLAZA SECTIONS



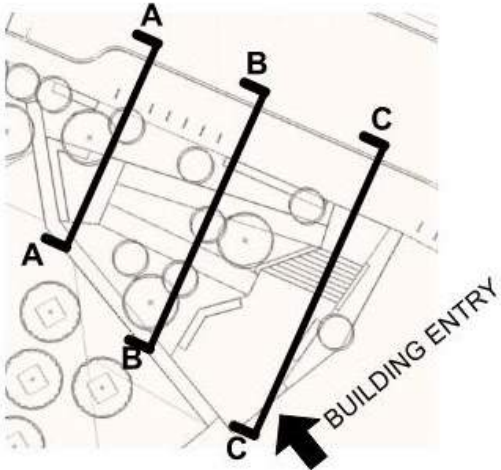
A Section through Gathering Terrace



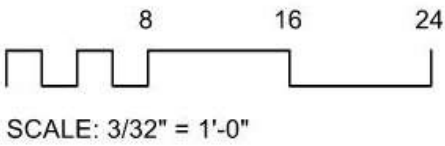
B Section through Accessible Path and Plantings



C Section through Building Entry Plaza and Stair



KEYPLAN NTS



EXISTING GRADE

EXISTING SPOT ELEVATION

PROPOSED SPOT ELEVATION

BUILDING ENTRY

MASTER PLANT DIAGRAM



ENTRY ZONE

TREES



FRINGETREE
Chionanthus virginicus



SHRUBS



FRAGRANT SUMAC
Rhus aromatica 'Grow-Low'



INKBERRY HOLLY
Ilex glabra 'compacta'

PERENNIALS AND GROUNDCOVERS



PINK MUHLY GRASS
Muhlenbergia capillaris



GOLDEN RAGWORT
Packera aurea



NEW ENGLAND ASTER
Aster novae-angliae



BLACK EYED SUSAN
Rudbeckia fulgida

BIORETENTION AND PARKING LOT

TREES



SYCAMORE
Platanus occidentalis



RIVER BIRCH
Betula nigra 'Dura Heat'



YELLOWWOOD
Cladastris kentuckea



HOLLY
Ilex opaca

SHRUBS



WINTERBERRY HOLLY
Ilex verticillata



SUMMERSWEET
Clethra alnifolia



JUNIPER
Juniperus virginiana

BIORETENTION, CONTINUED

PERENNIALS AND GROUNDCOVERS - FACULTATIVE UPLAND



PURPLE LOVEGRASS
Eragrostis spectabilis



PINK ASTER
Aster novae-angliae 'Woods Pink'



SIDEOATS GRAMA
Bouteloua curtipendula



TALL VERBENA
Verbena bonariensis



RATTLESNAKE MASTER
Eryngium yuccafolium

PERENNIALS AND GROUNDCOVERS - FACULTATIVE WETLAND



SOFT RUSH
Juncus effusus



WHITE TURTLEHEAD
Chelone glabra



TUSSOCK SEDGE
Carex struta



TUFTED HAIRGRASS
Deschampsia cespitosa



QUEEN OF THE PRAIRIE
Filipendula rubra

BORDER PLANTS

TREES



SCARLET OAK
Quercus coccinea



TULIP POPLAR
Liriodendron tulipifera



DOGWOOD
Cornus florida



HOLLY
Ilex opaca

SHRUBS



PEPPERBUSH
Itea virginica



JUNIPER
Juniperus virginiana

DOWNSLOPE

TREES



SYCAMORE
Platanus occidentalis



RIVER BIRCH
Betula nigra 'Dura Heat'

SHRUBS



INKBERRY HOLLY
Ilex glabra 'compacta'



CHOKEBERRY
Aronia melanocarpa



STAGHORN SUMAC
Rhus typhina

PERENNIALS AND GROUNDCOVERS



GOLDEN RAGWORT
Packera aurea



SIDEOATS GRAMA
Bouteloua curtipendula



BLACK EYED SUSAN
Rudbeckia fulgida



CONEFLOWER
Echinacea purpurea



COLUMBINE
Aquilegia canadensis



TUSSOCK SEDGE
Carex struta



SWITCHGRASS
Panicum var. 'Shenandoah'

MARCH 2024 COMMISSION FEEDBACK - FOR REFERENCE ONLY

U.S. COMMISSION OF FINE ARTS

ESTABLISHED BY CONGRESS 17 MAY 1910

401 F STREET NW SUITE 312 WASHINGTON DC 20001-2728 202-504-2200 FAX 202-504-2195 WWW.CFA.GOV

27 March 2024

Dear Mr. Hunter:

In its public meeting of 21 March conducted by videoconference, the Commission of Fine Arts reviewed a second concept submission for the renovation and expansion of MacArthur High School and its associated landscape at 4530 MacArthur Boulevard, NW. The Commission approved the concept design and provided the following comments.

The Commission members commended the design team for developing an admirable architectural solution that unifies this eclectic campus on a complex site. They expressed support for the revisions proposed in response to their previous comments, particularly the improvement of pedestrian and bicycle access in relation to vehicular traffic movement. Recognizing the full school capacity of 800 students and the constrained space available to manage traffic, they strongly recommended further improvement to pedestrian circulation within the campus: enhancing the experience of the approaches from MacArthur Boulevard; using clear physical and graphic elements to support pedestrian movement, particularly at drop-off areas; and developing additional areas for congregating and waiting, both at the entry plaza and throughout the entire arrival sequence. Regarding the proposed material options for the upper level of this central addition, they expressed a preference for green glazed brick rather than metal panels, commenting that the brick would provide a beautiful and longer-lasting solution that would provide a sense of weight and gravity for this institutional building.

The Commission looks forward to further review of this important project. Please continue consulting on the development of the design with the staff which, as always, is available to assist you.

Sincerely,



Thomas E. Luebke, FAIA
Secretary

Delano Hunter, Director
D.C. Department of General Services
3924 Minnesota Avenue, NE
Washington, DC 20019

STUdios

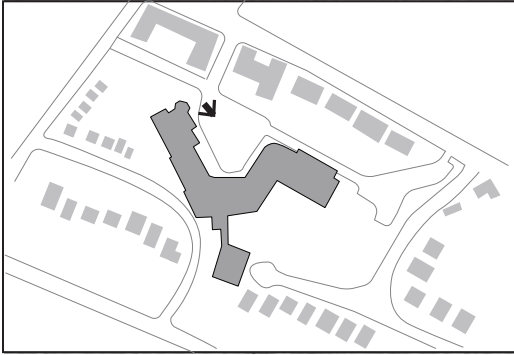
SAN FRANCISCO • WASHINGTON, DC • NEW YORK • LOS ANGELES • PARIS • LYON

Existing Building Material Palette Evolution

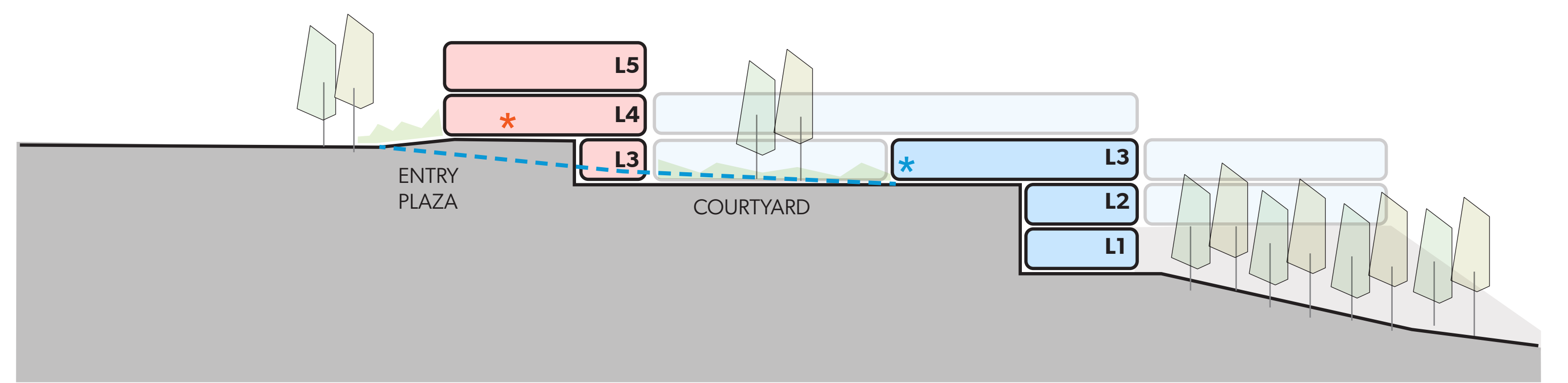
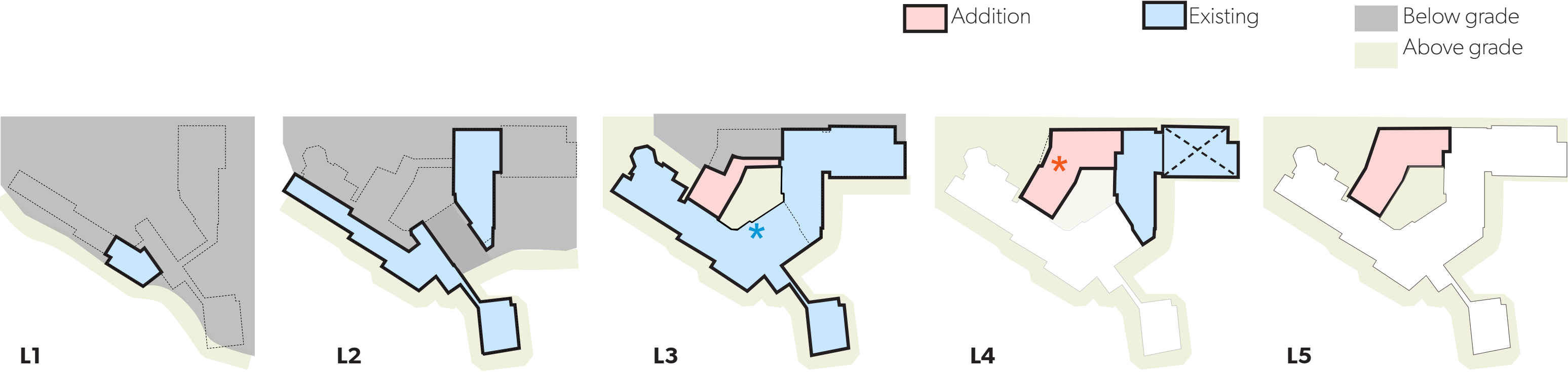




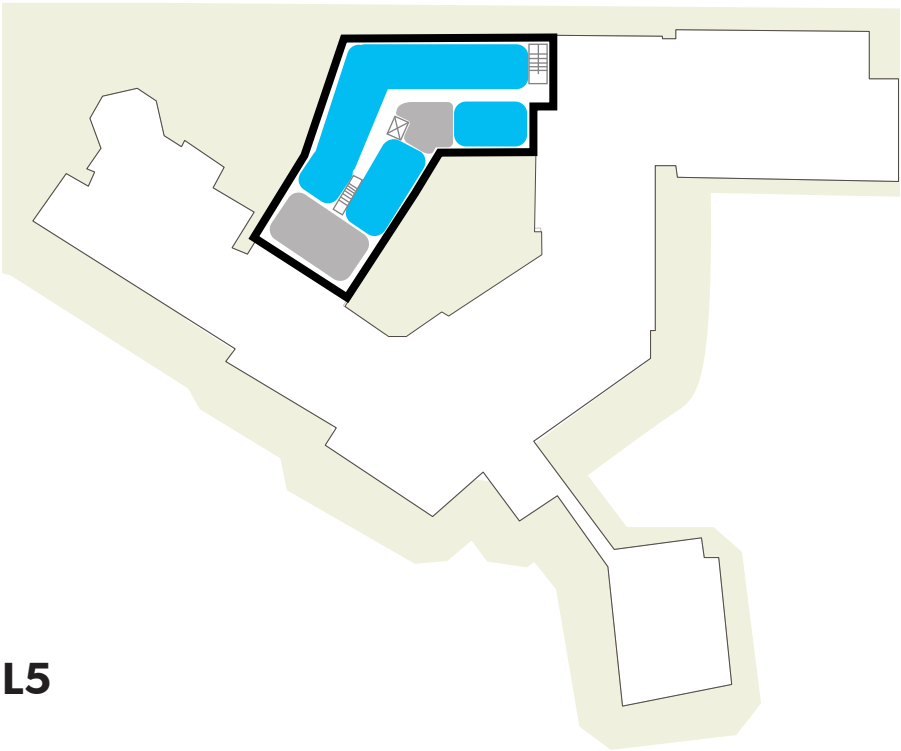
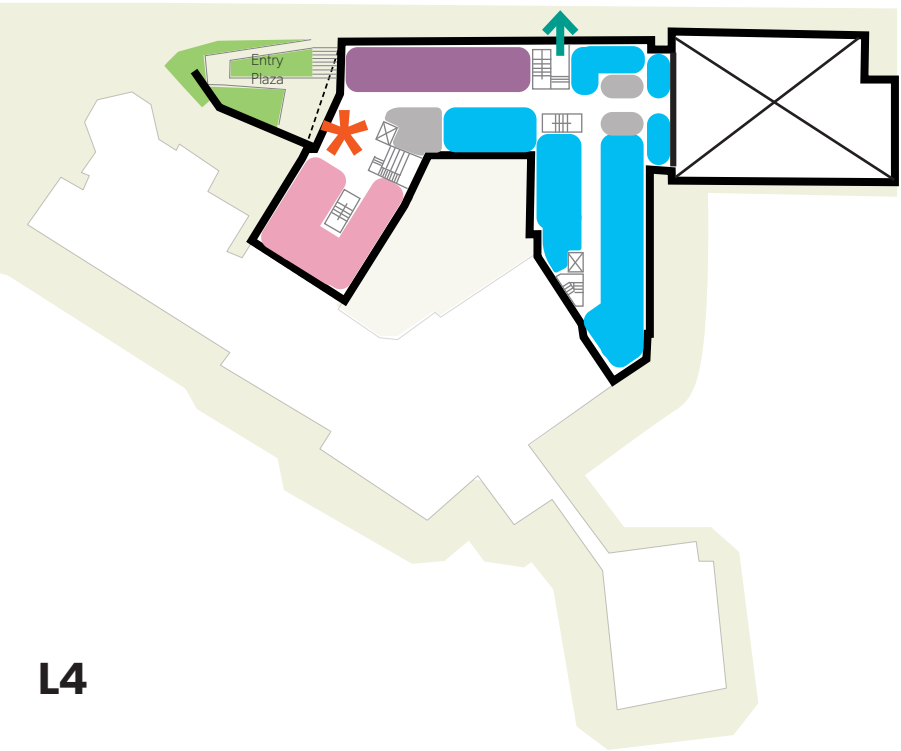
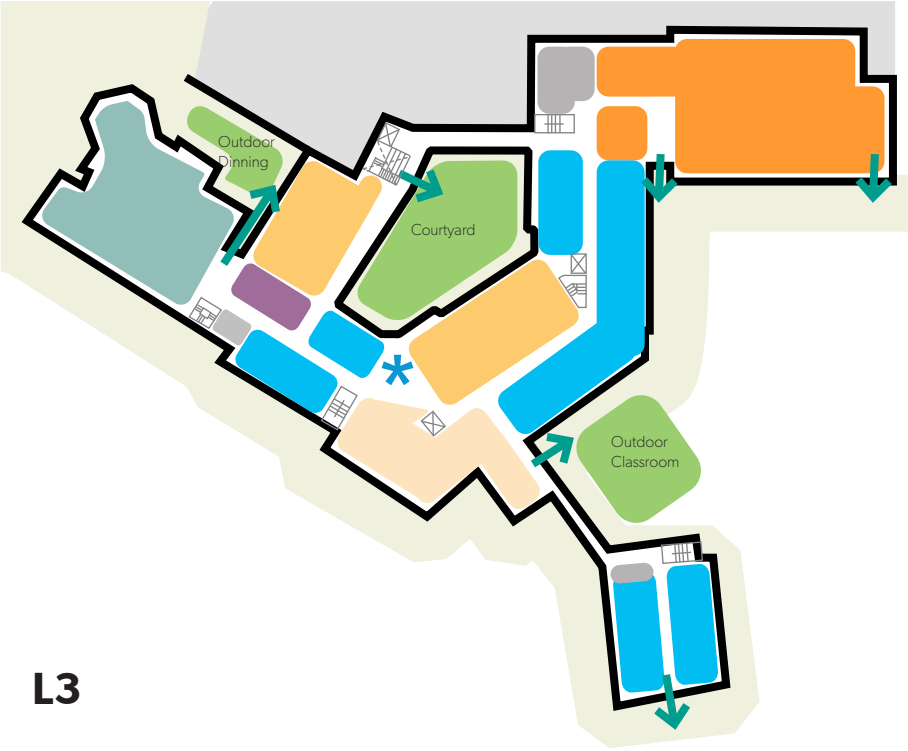
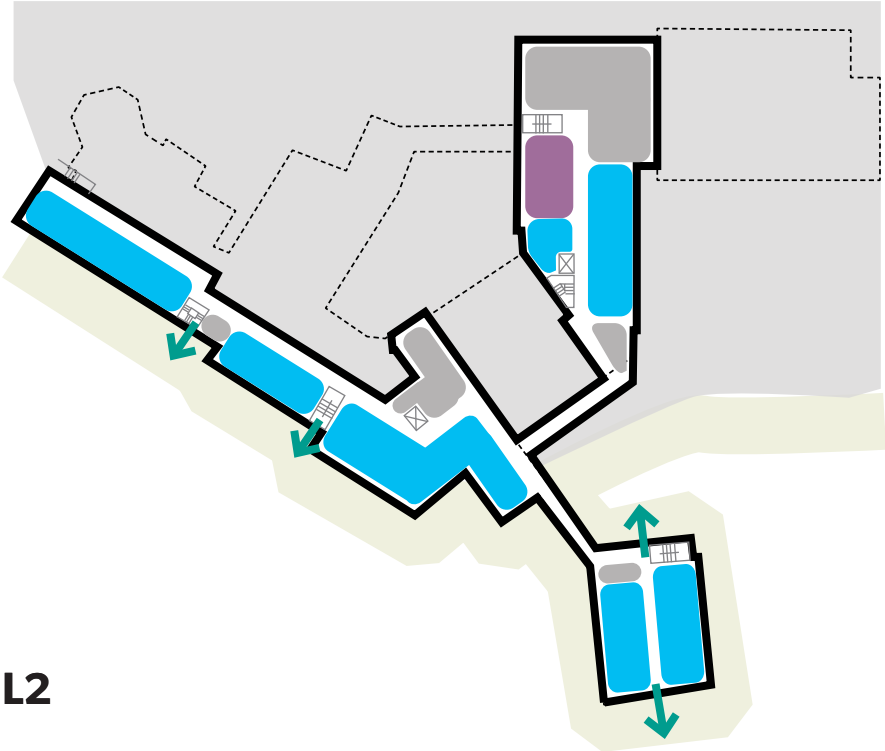
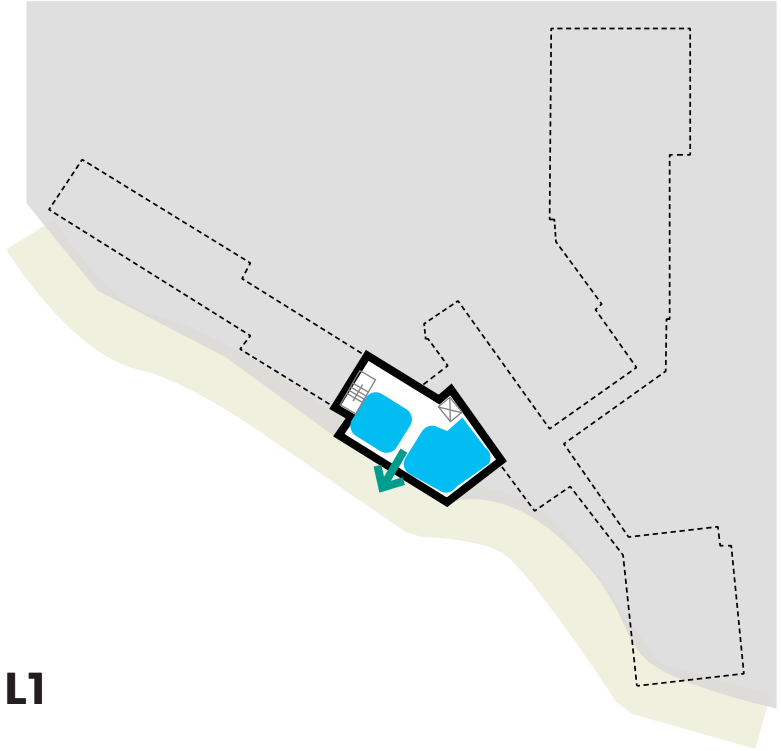
EXISTING
SCHOOL ENTRY



Addition Planning

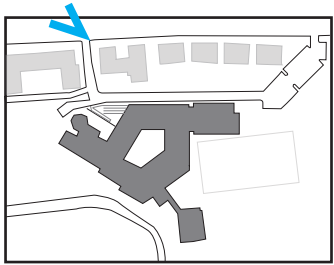
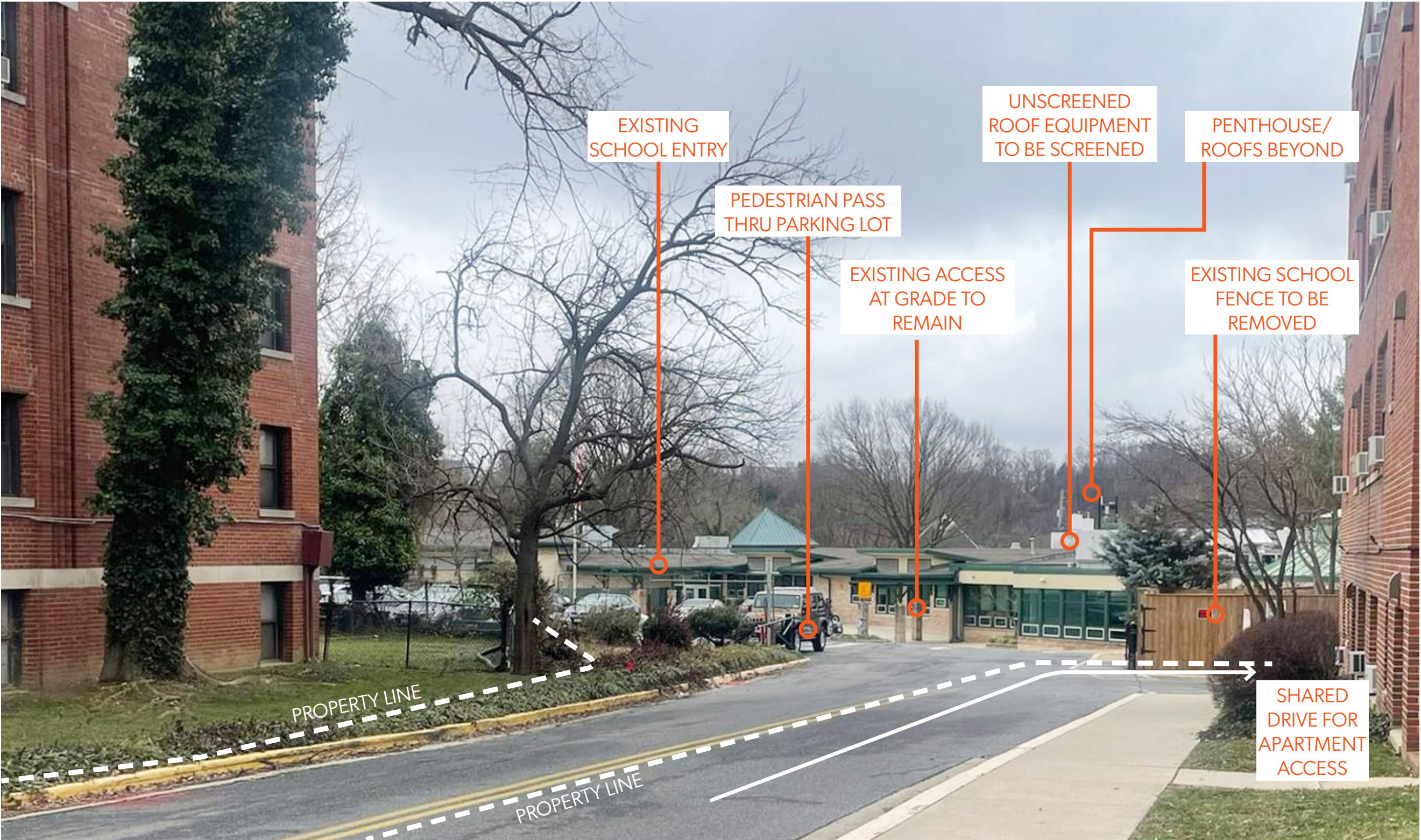


Program

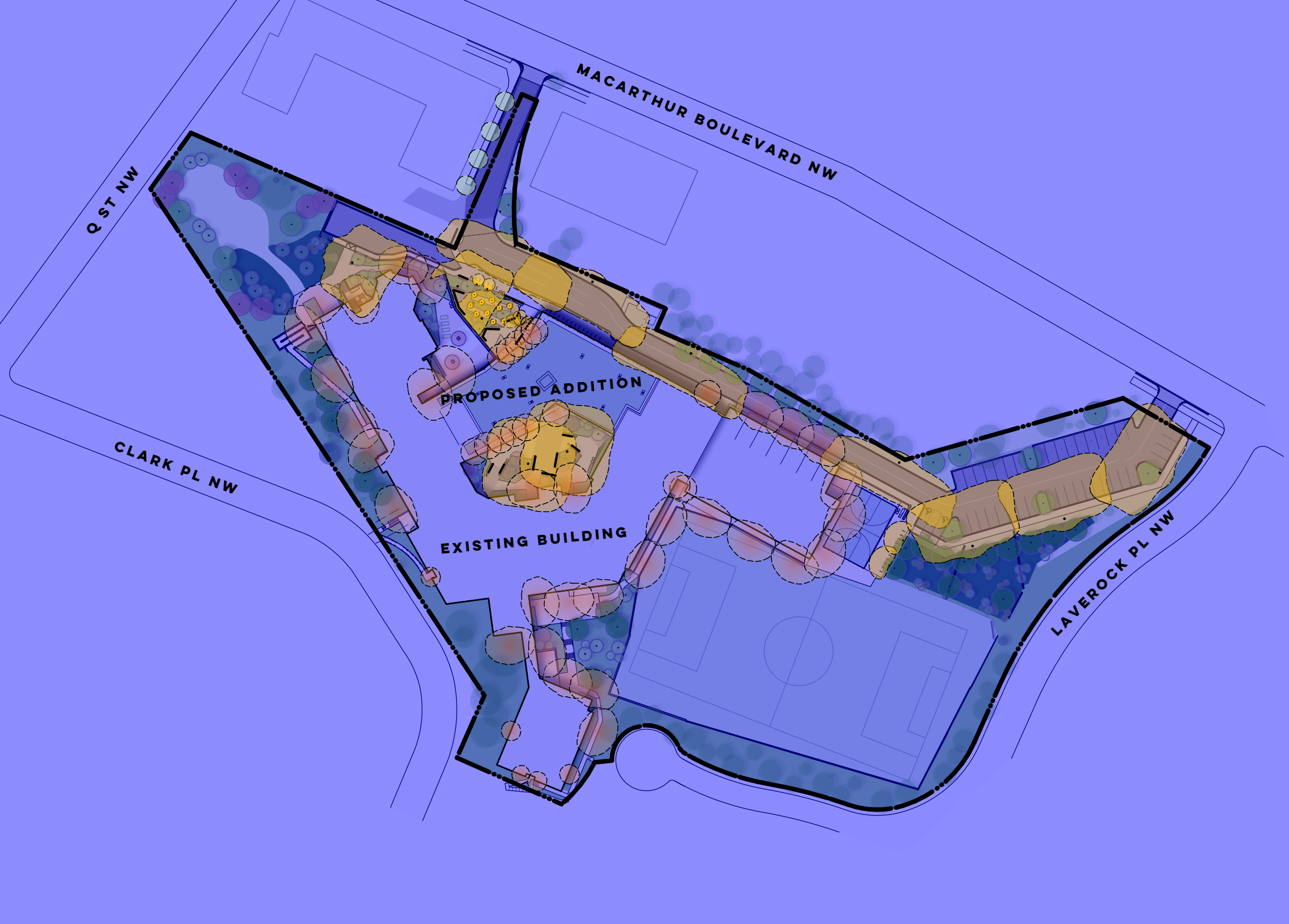


- Below grade
- Above grade
- New entry
- Existing entry
- Grade access
- Academic program
- Cafeteria & kitchen
- Gym
- Library
- Black box & music program
- Art program
- Admin & health suite
- Storage & building support
- Outdoor program

Street View - Existing

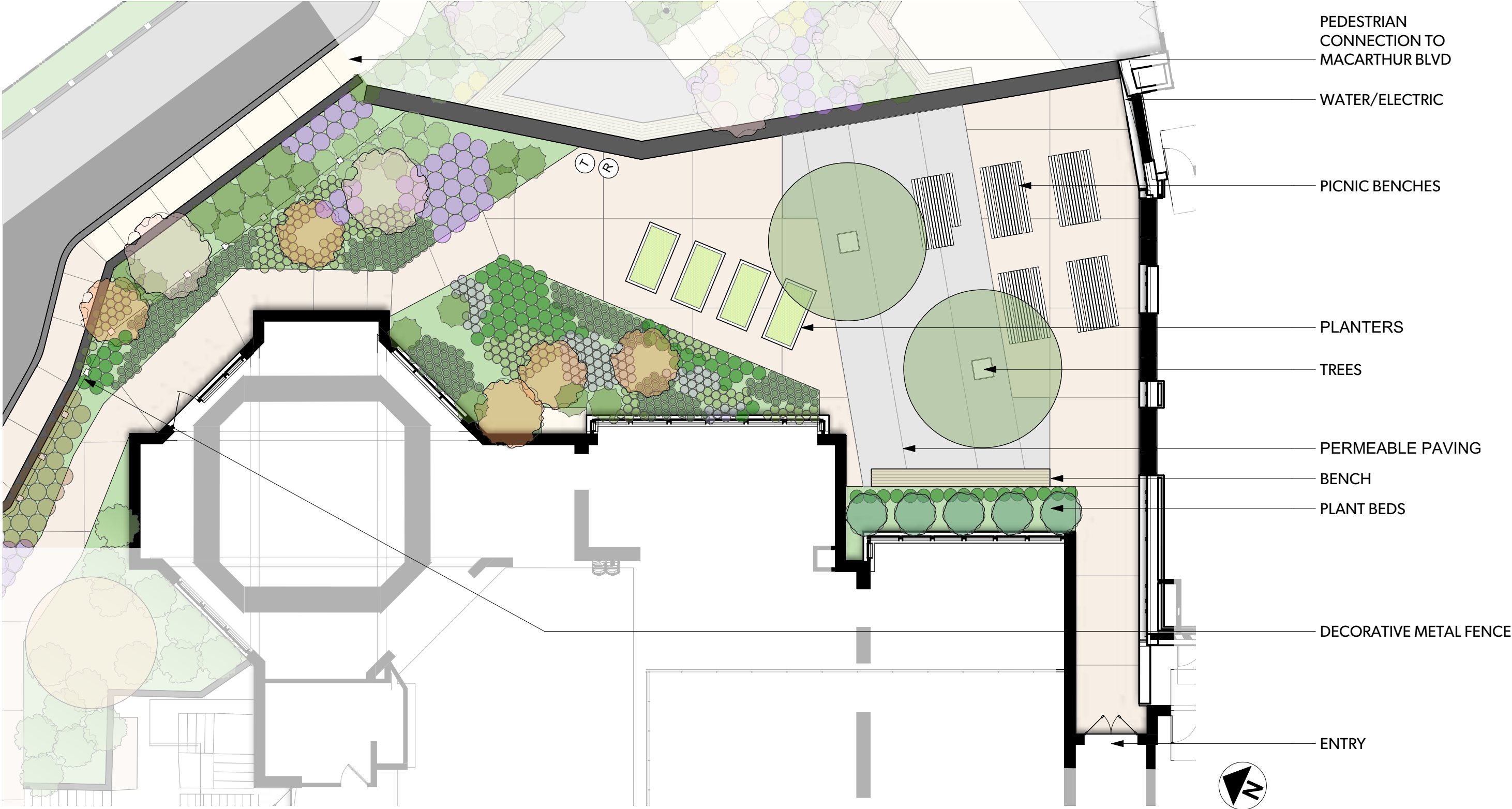


LANDSCAPE LIGHTING DIAGRAM



- ILLUMINATED HANDRAIL
- BENCH LIGHT
- IN-GRADE LIGHT
- BOLLARD LIGHT
- POLE LIGHT 12'
- POLE LIGHT 25'
- LIGHTING IN ARCHITECTURAL SCOPE

OUTDOOR CLASSROOM



OUTDOOR CLASSROOM

TREES



BLACK GUM
Nyssa sylvatica



WITCH-HAZEL
Hamamelis virginiana

SHRUBS



INKBERRY HOLLY
Ilex glabra 'compacta'

PERENNIALS AND GROUNDCOVERS



LYRELEAF SAGE
Salvia lyrata



GOLDEN RAGWORT
Packera aurea



NEW ENGLAND ASTER
Aster novae-angliae



HAY-SCENTED FERN
Dennstaedtia punctilobula



CAREX APPALACHIA
Appalachian Sedge

LOADING AND BIORETENTION ZONES

