





# TEAM AND INTRODUCTIONS





# CONTENTS AND DISCUSSION POINTS

- 1 OVERVIEW
- 2 NEIGHBORHOOD CONTEXT
- 3 EXISTING BUILDING ANALYSIS
- 4 CONCEPTUAL APPROACH



# 1

## OVERVIEW



# GUIDING PRINCIPLES FOR DESIGN

1

**Context and Neighborhood**

Respect the existing building, operations, and integrity of Ludlow-Taylor Elementary School. Provide a mindful intervention for the addition, one that celebrates the surrounding Capitol Hill Neighborhood, the diversity of uses of the school, and its grounds as a part of the community and larger ecosystem

2

**Energy and Sustainability**

Utilize integrative thinking and sustainable best practices to lower building operating costs and impact on finite resources. Integrate the addition within the landscape, providing visual and accessible connections to the outdoors

3

**Academics**

Provide learner and teacher centered spaces that are connected with the outdoors. Spaces should be replicable and adaptable to pedagogical and technological shifts throughout the life span of the building and provide functional places for each student to explore their interests

4

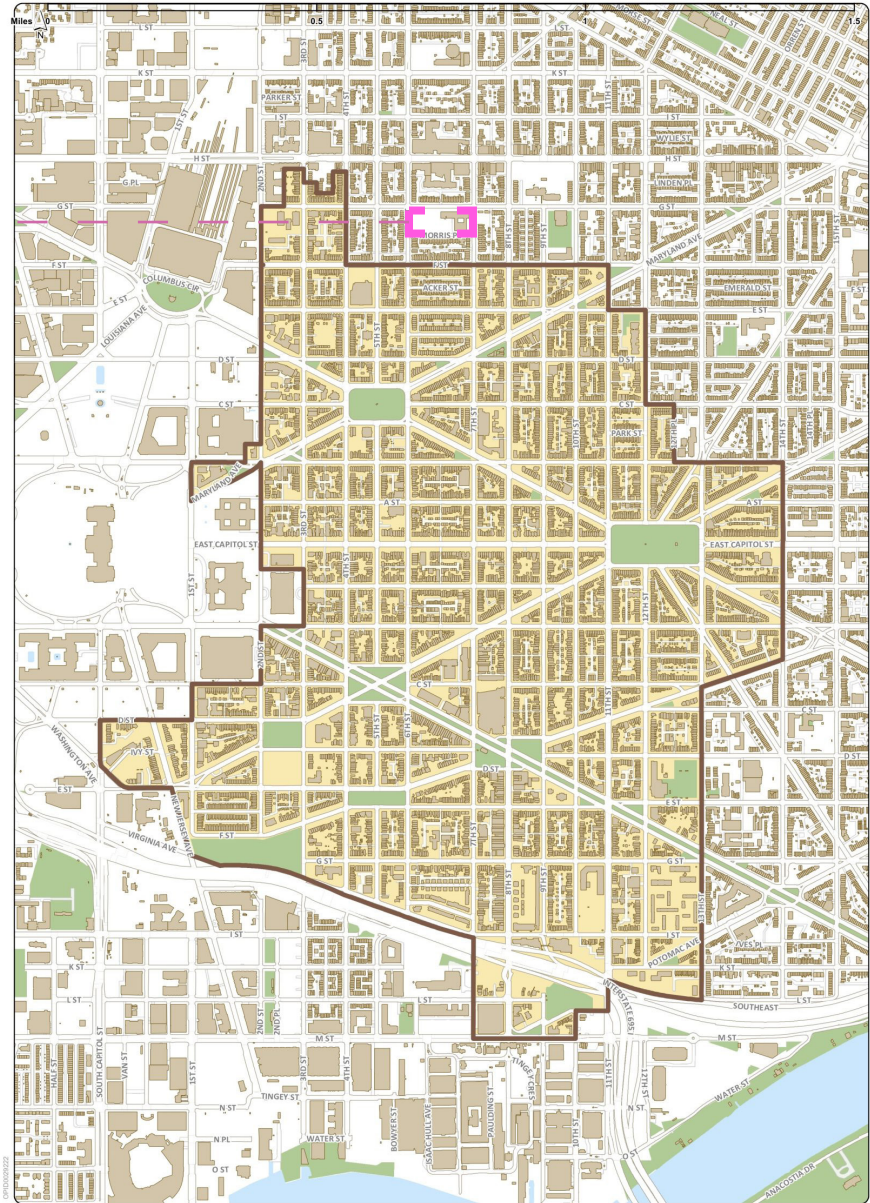
**Play**

Early childhood education is centered around exploration and play. The addition should embody the spirit of early childhood education and connect the indoors and outdoors as both academic and play spaces, providing indentifiable learning communities for Early Childhood Education.



# NEIGHBORHOOD SETTING

SITE — —



Office of Planning – June 8, 2018  
Government of the District of Columbia  
This map was created for planning purposes from a variety of sources. It is neither a survey nor a legal document. Information provided by other agencies should be verified with them where appropriate.

Capitol Hill  
Historic District



MAP: CAPITAL HILL HISTORIC DISTRICT

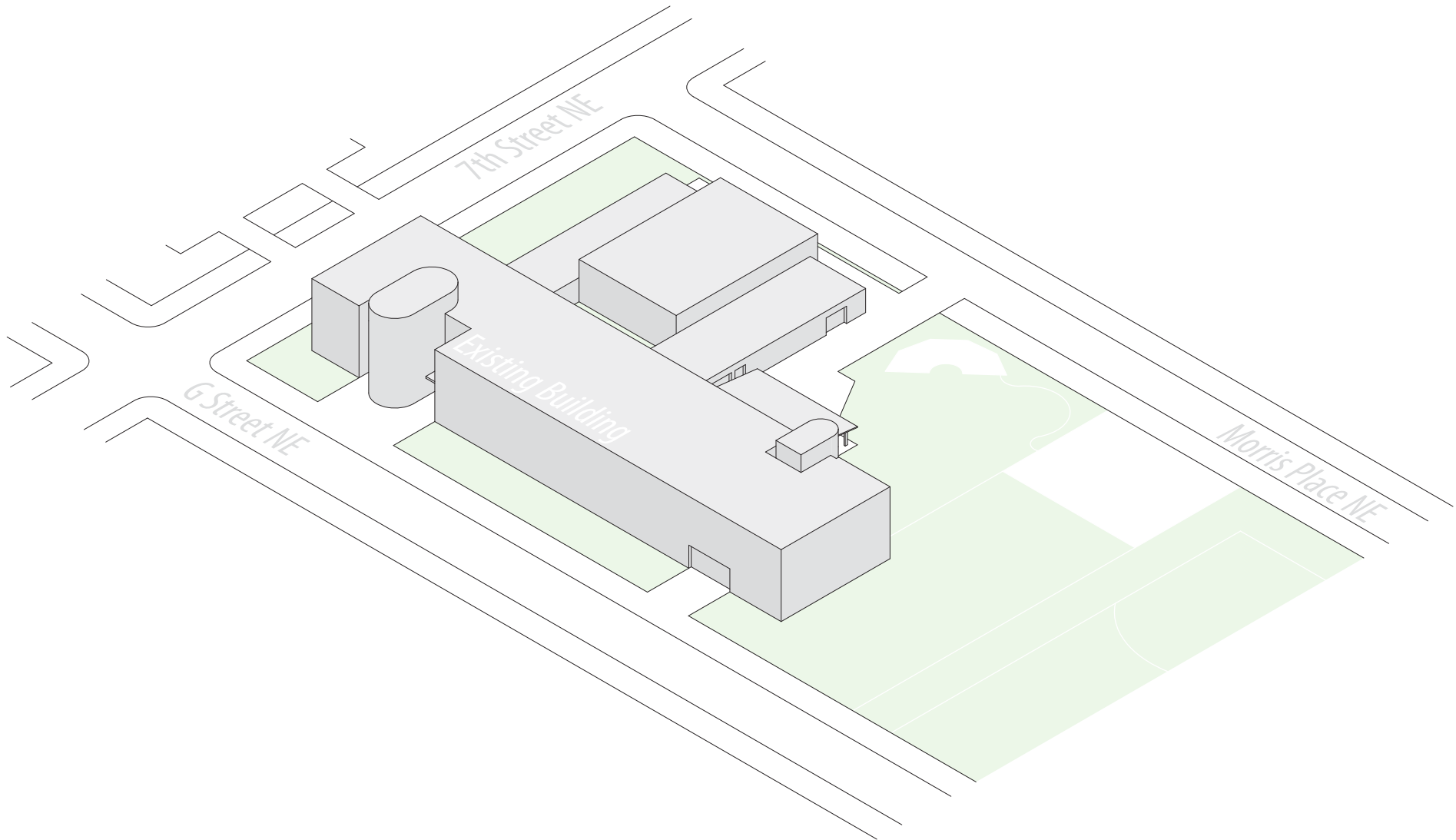


APPROXIMATE SCHOOL BOUNDARY OVERLAY



# PROGRAM AND SITE OVERVIEW

	QTY	SIZE (EA)
ACADEMIC SPACES		
EARLY CHILDHOOD CLASSROOM	4	1025*
EARLY CHILDHOOD STORAGE	4	100
EARLY CHILDHOOD RESTROOM	4	60
RESOURCE ROOM	2	360
TEACHER COLLABORATION ROOM	1	300
LAUNDRY ROOM	1	80
SUBTOTAL		5760
BUILDING SERVICES		
CUSTODIAL CLOSET	2*	25
ELECTRICAL CLOSET	TBD	TBD
MDF ROOM	1	200
IDF ROOM	3	100
CORRIDORS	TBD	TBD
MECHANICAL SPACE	TBD	TBD
SUBTOAL		550
TOTAL PROGRAM		
NET PROGRAM	-	6,310
GROSS PROGRAM	-	8,771





# SITE AND TRANSPORTATION

## 1. Overview

Ludlow-Taylor Elementary School serves the Capital Hill neighborhood of Washington DC and is in close proximity to H Street NE. The building is located within proximity to a multitude of transportation options and modes.

## 2. Pedestrian Experience

Sidewalks provide a continuous pedestrian experience within the neighborhood, and LTES is approximately geographically centered within the boundary it serves. The west and east ends of the boundary are approximately 15 minutes from the school by foot. The schools entrance is barrier-free and on grade along 7th street NE, and a continuous site wall forms the edge to the north of the school along G Street NE.

## 3. Bicycle Transportation

G Street is a main bicycle thoroughfare in the neighborhood and has dedicated cycling lanes, as does 6th Street NE. See zoning analysis for bicycle parking requirements related to the addition.

## 4. Vehicular Transportation

The streets surrounding the school are generally quiet tertiary streets serving the neighborhood. Street parking for the neighborhood is provided along all neighboring streets. Parking for the school is located along 7th street NE - at the site of the previous Taylor School. See zoning analysis for vehicular parking requirements related to the addition.

## 5. Building Services

Building services, i.e. refuse and deliveries, are located along an internal drive to the west of the cafeteria and gymnasium, accessed via Morris Place NE to the south of the school. The dumpsters are located in-front of the site gate/fencing.





# SITE CONTEXT - PLACES

**Site Description**

After the 1968 Consolidation, the school yard has been partitioned into 5 general and discrete areas.

- Area 1 - Play-field
- Area 2 - Bio-retention and Deck
- Area 3 - Vegetable and Demonstration Garden
- Area 4 - Play-court
- Area 5 - Playground

**Intent and Impact**

Based on DGS| DCPS intent, and feedback from the community, maintaining school and community operations in areas 1,3, 4, and 5 are part of the design goals.



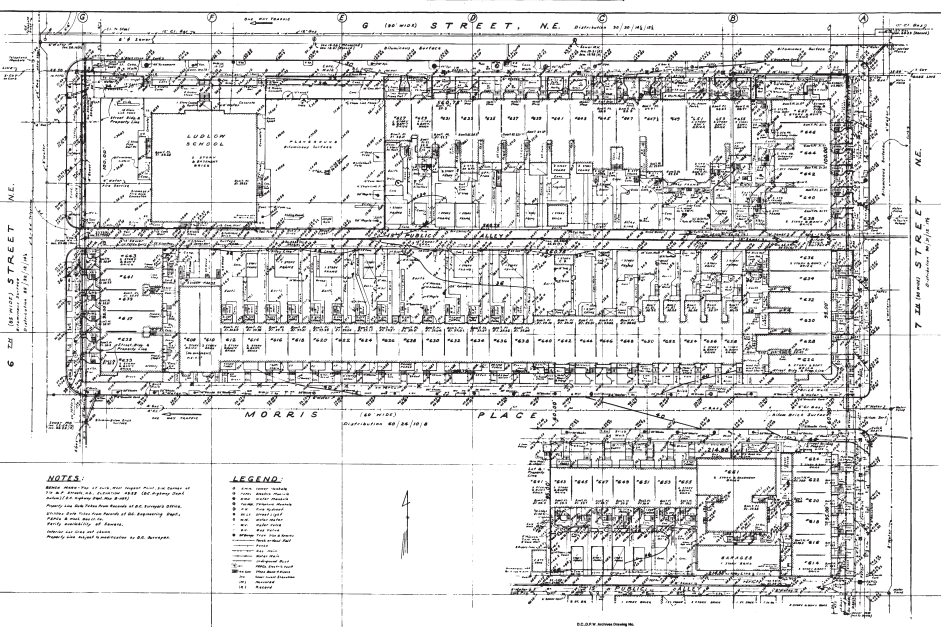


# 2 NEIGHBORHOOD CONTEXT

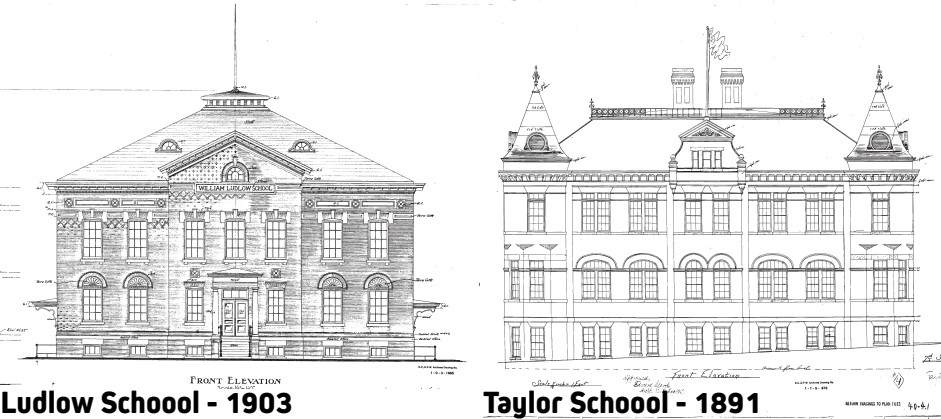
# ORIGINAL BUILDING PLANS

## Site Plan

**Consolidation**  
The Ludlow and Taylor Schools were previously situated along 6th and 7th street respectively. The Taylor school was demolished and its lot currently serves the parking requirements for the school. The Ludlow School sat on what is now the ball field and play-space for the school.



Previous Block Plan - Row houses

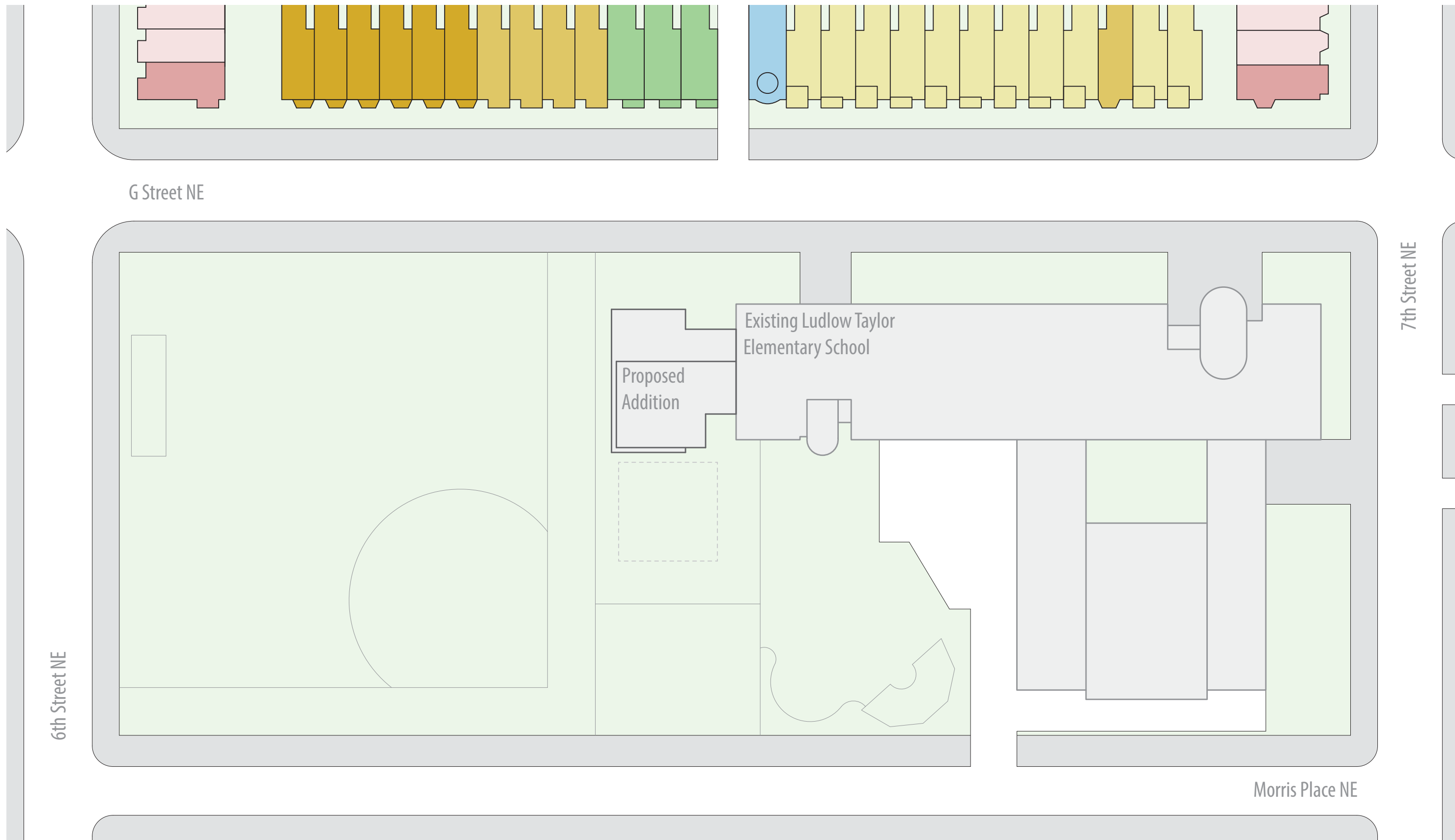


Ludlow School - 1903

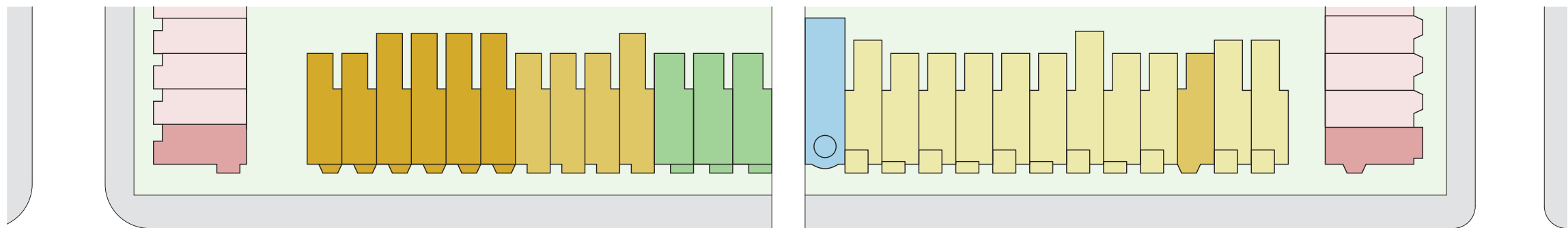
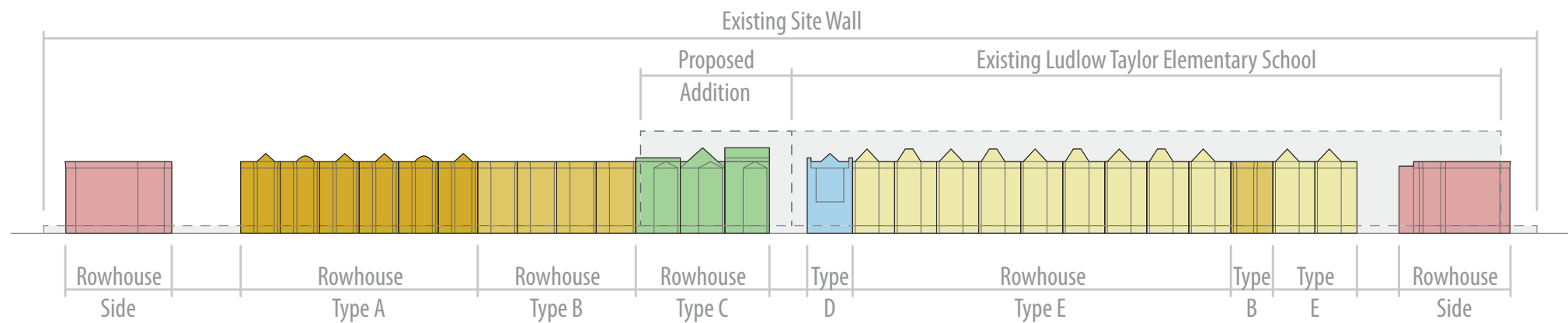
Taylor School - 1891



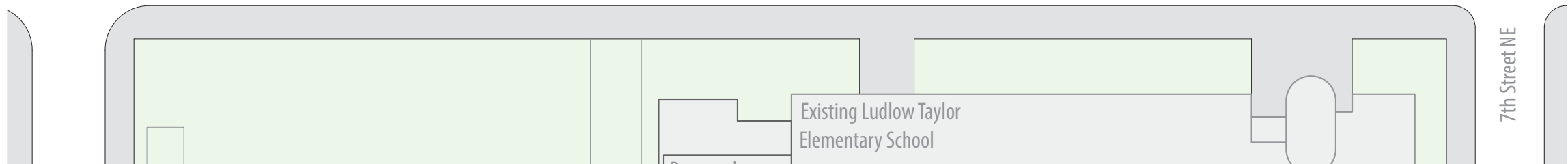




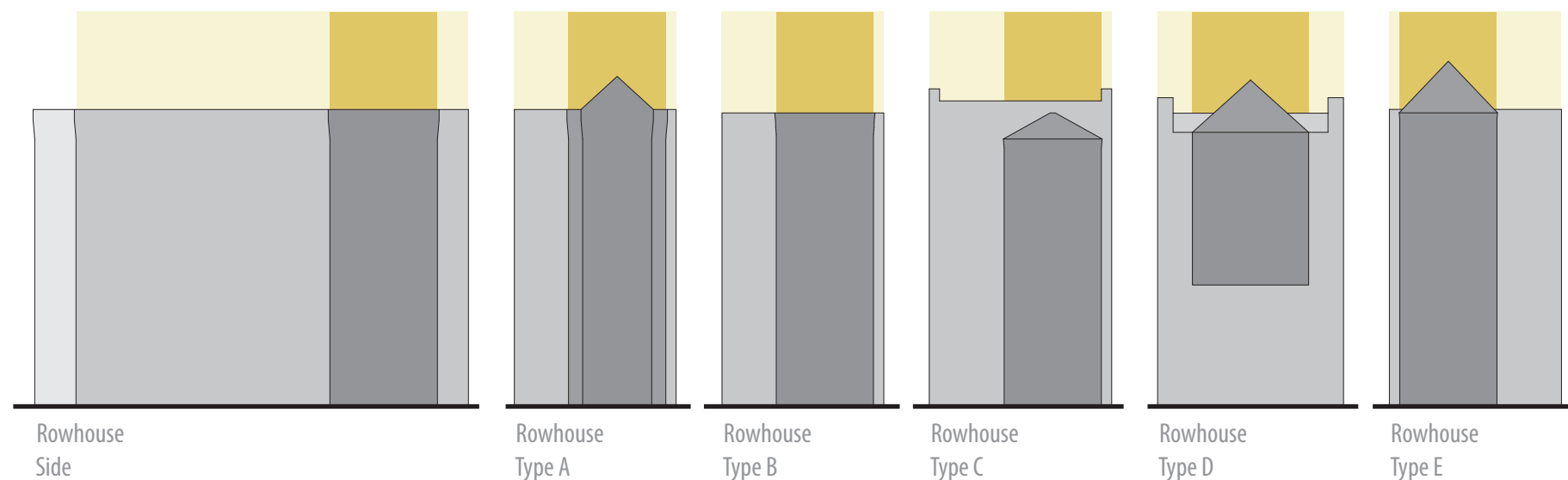
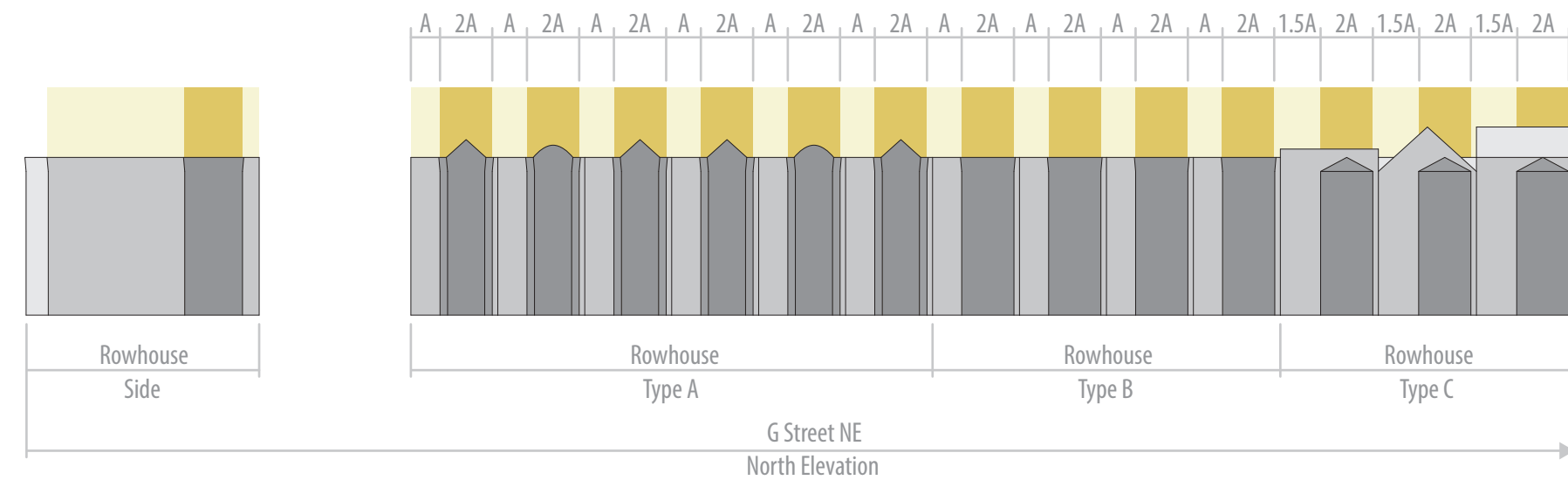




G Street NE







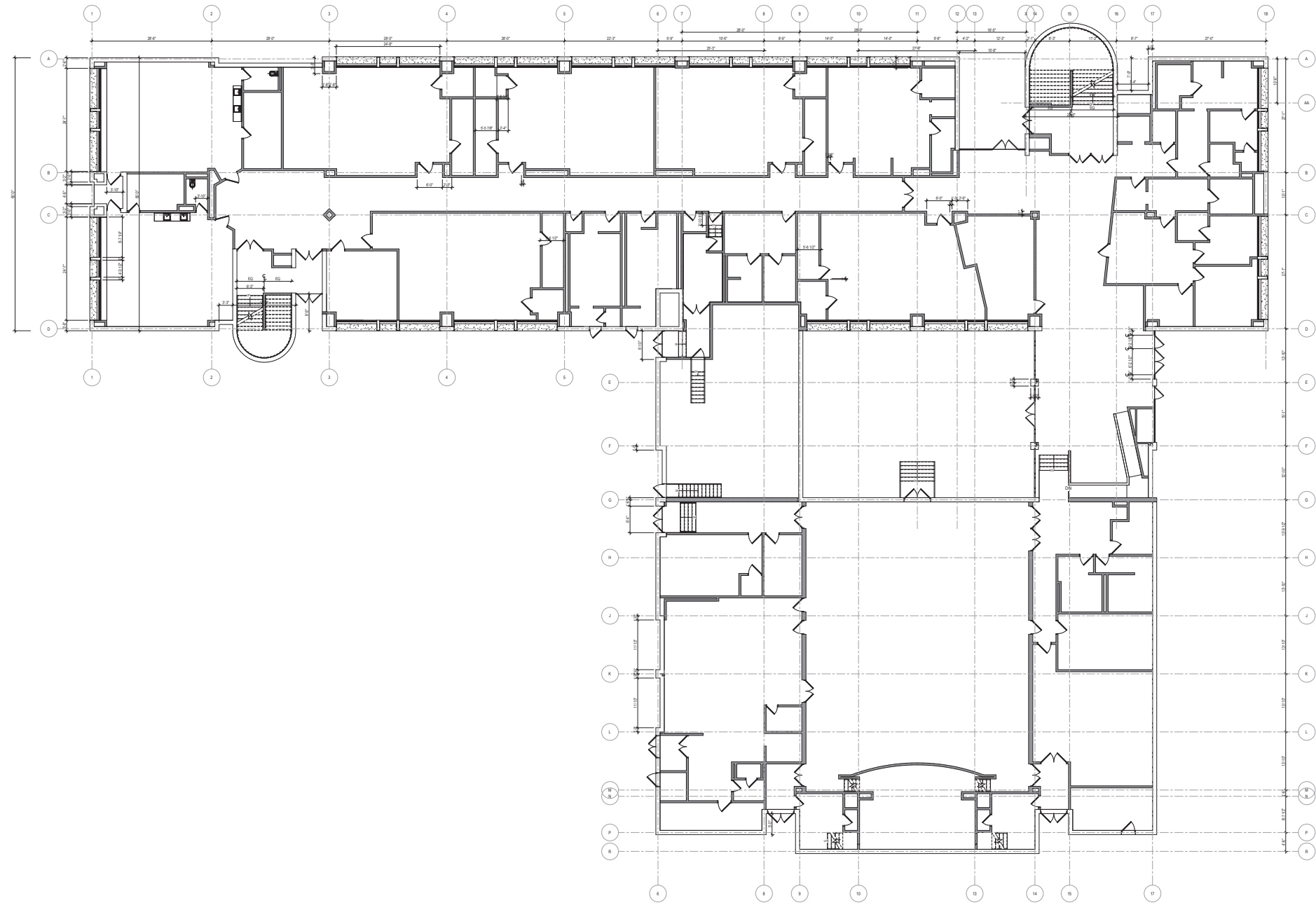




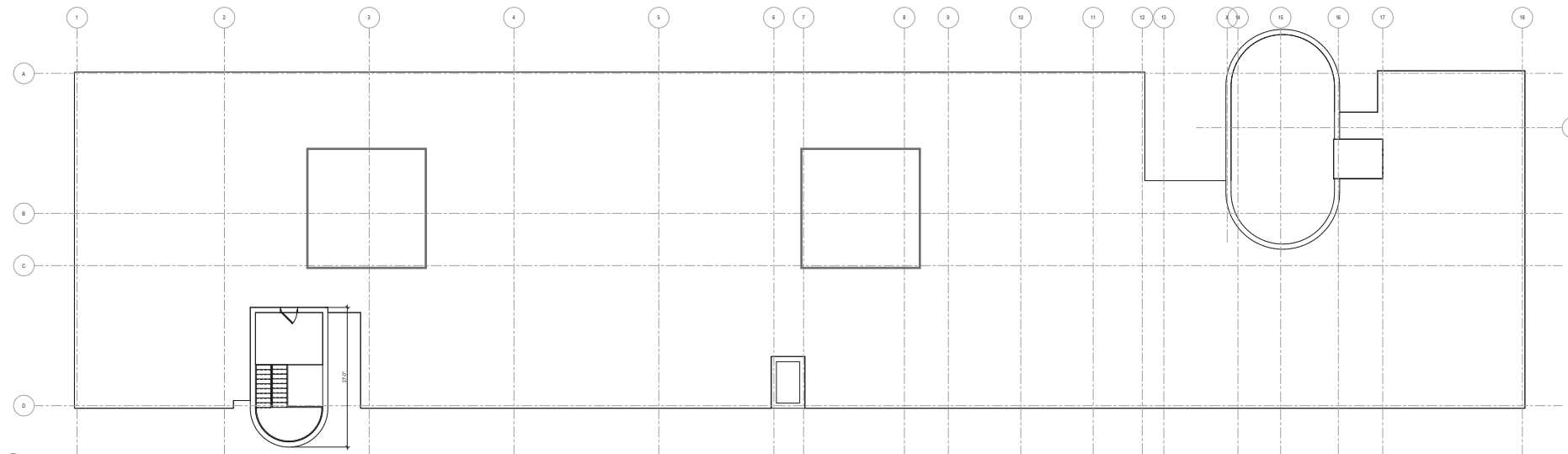
3

# EXISTING CONDITIONS

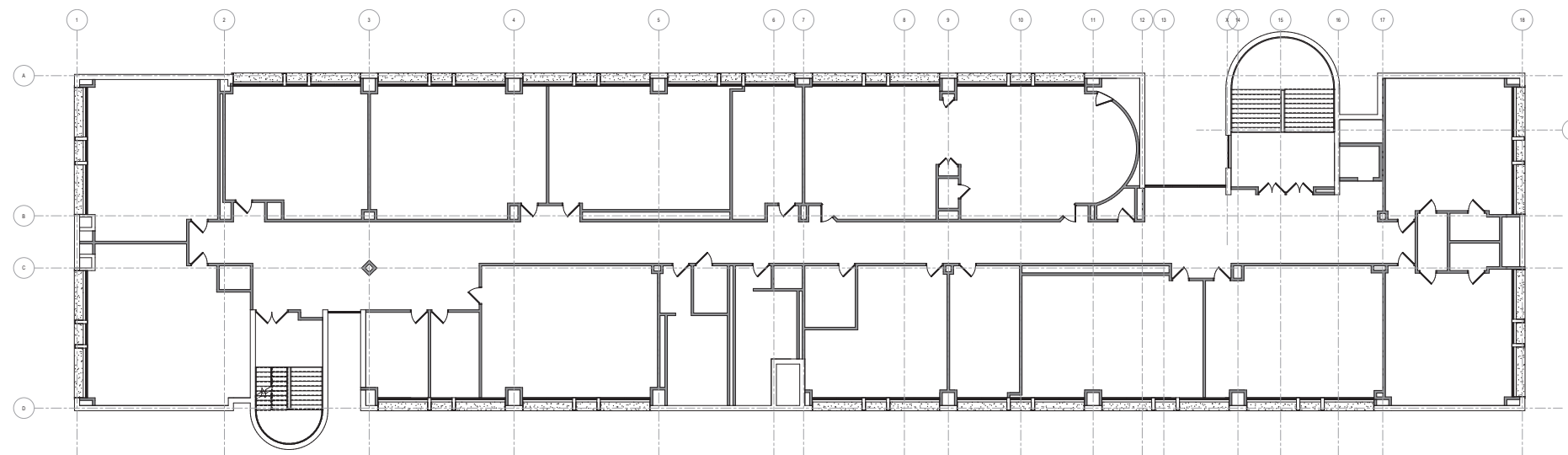




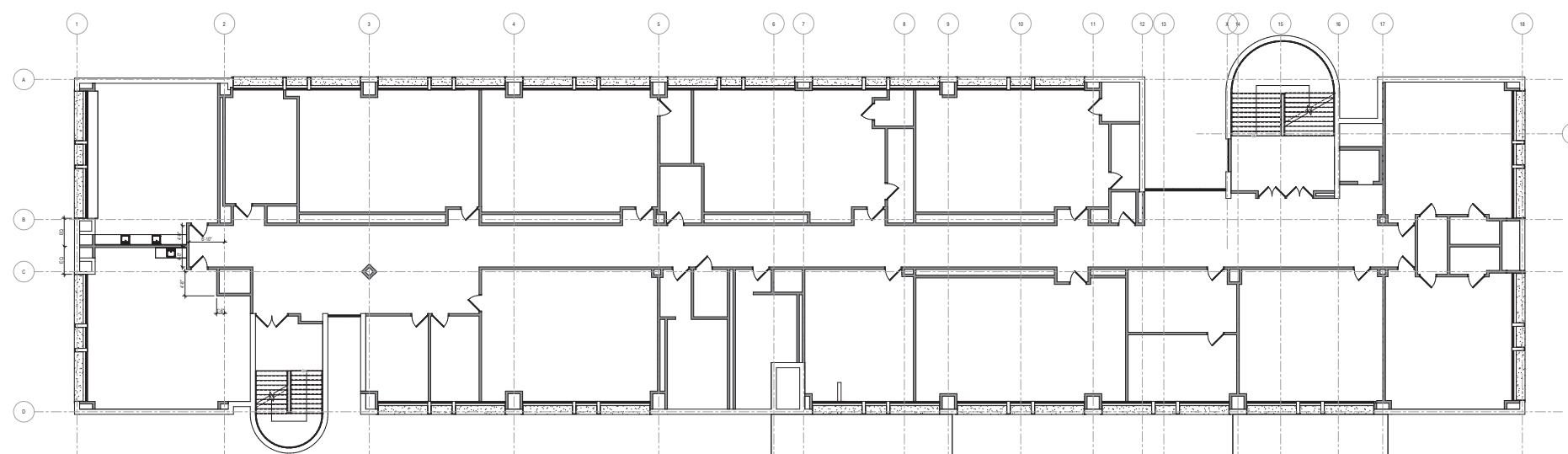
01 FIRST FLOOR PLAN



04 ROOF PLAN

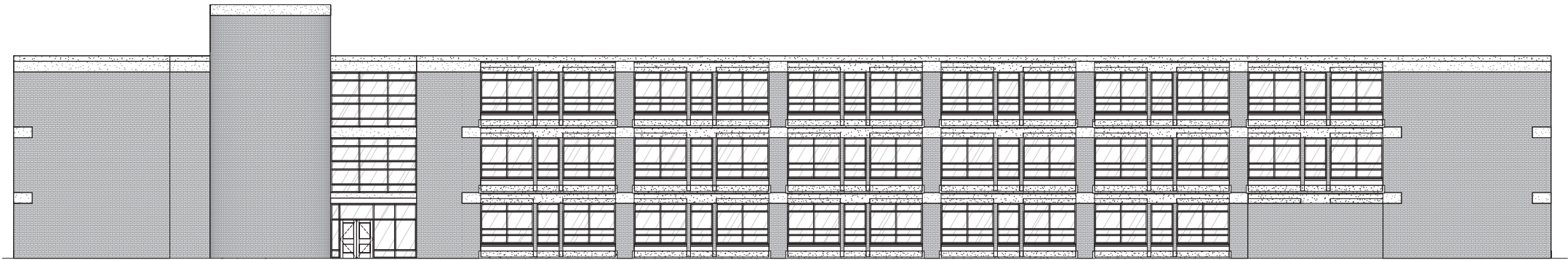


03 THIRD FLOOR PLAN



02 SECOND FLOOR PLAN

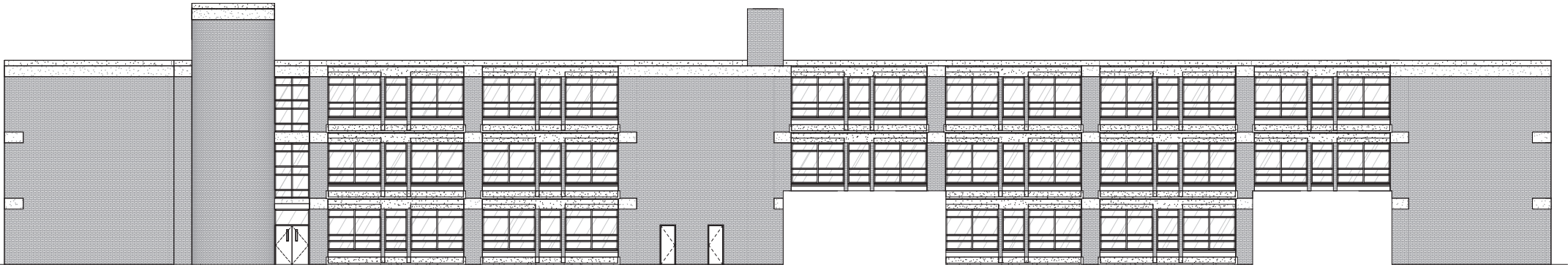




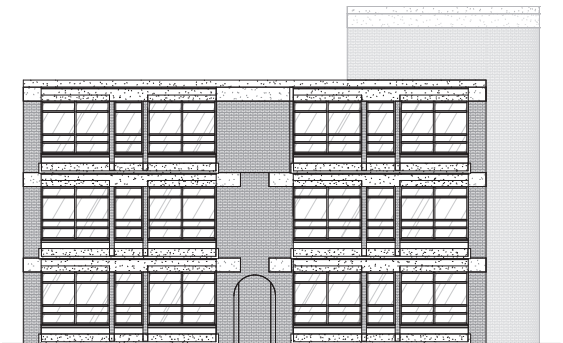
**NORTH ELEVATION**



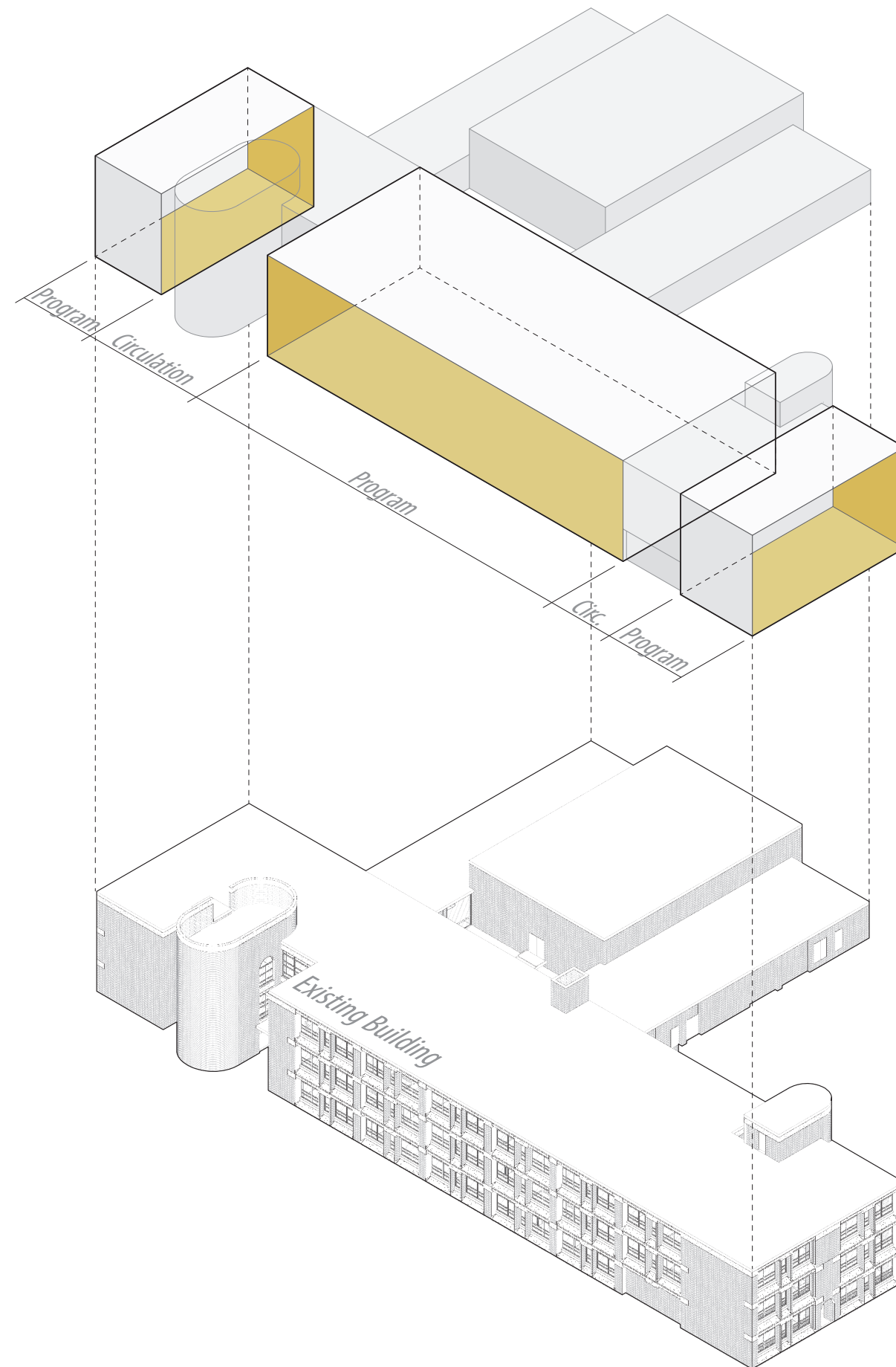
**EAST ELEVATION**



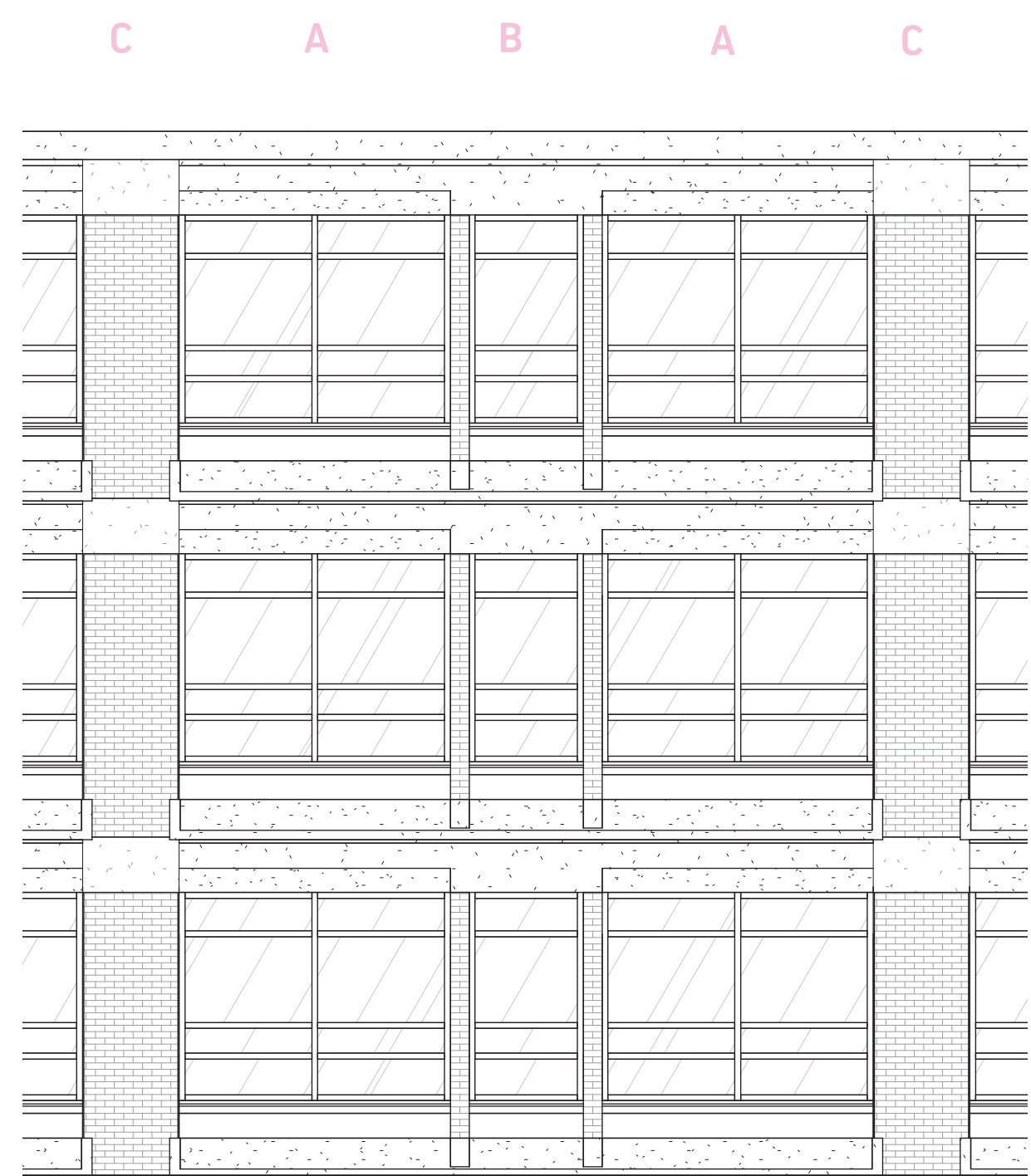
**SOUTH ELEVATION**



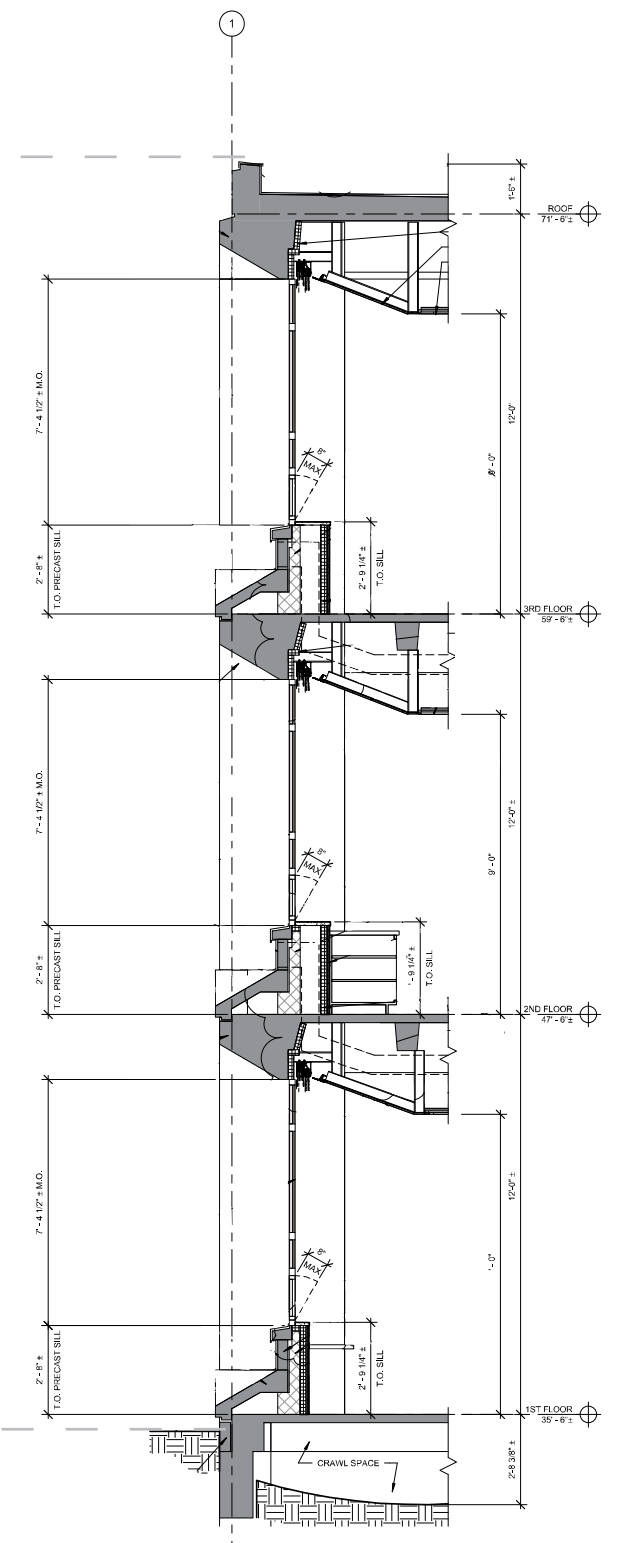
**WEST ELEVATION**



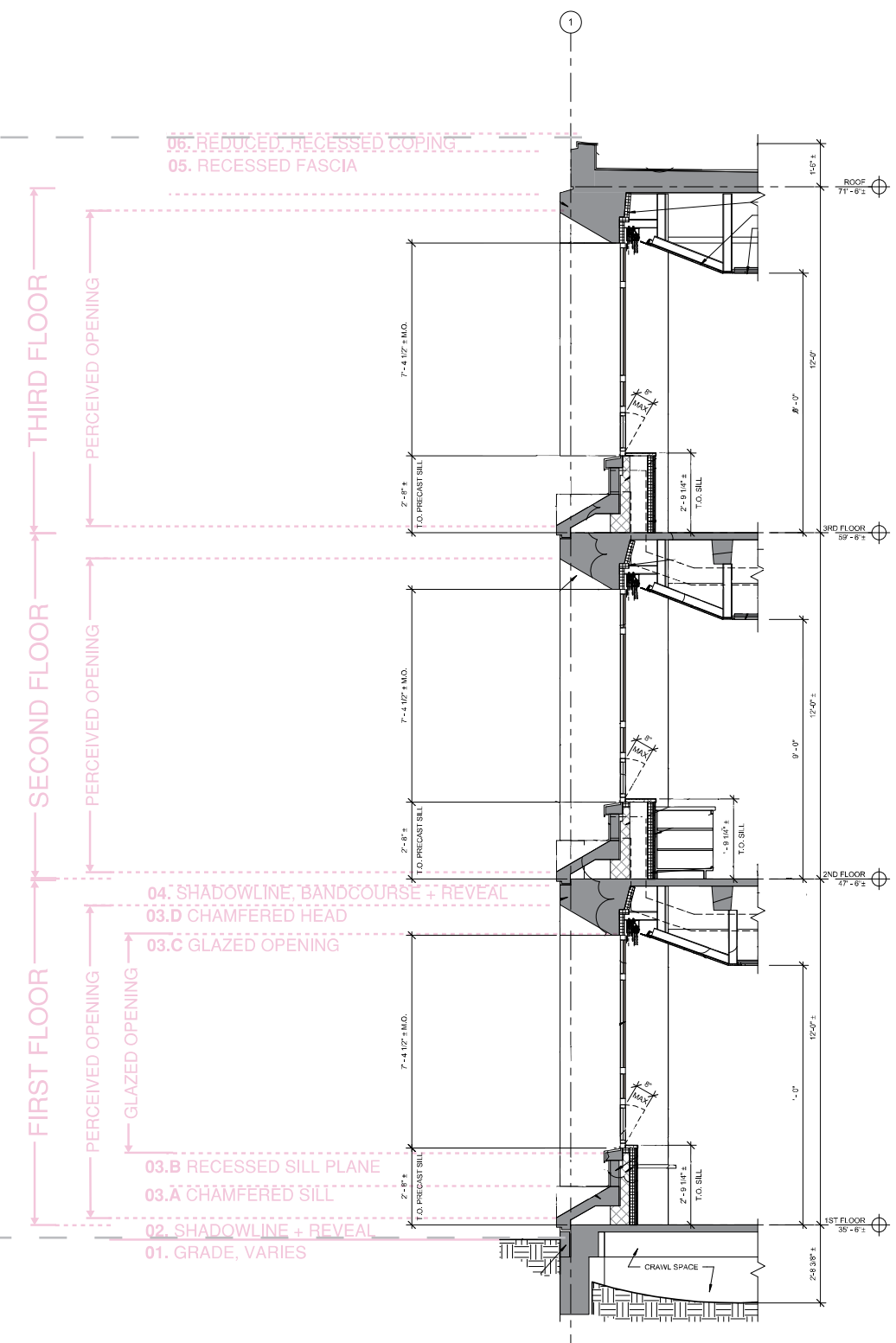
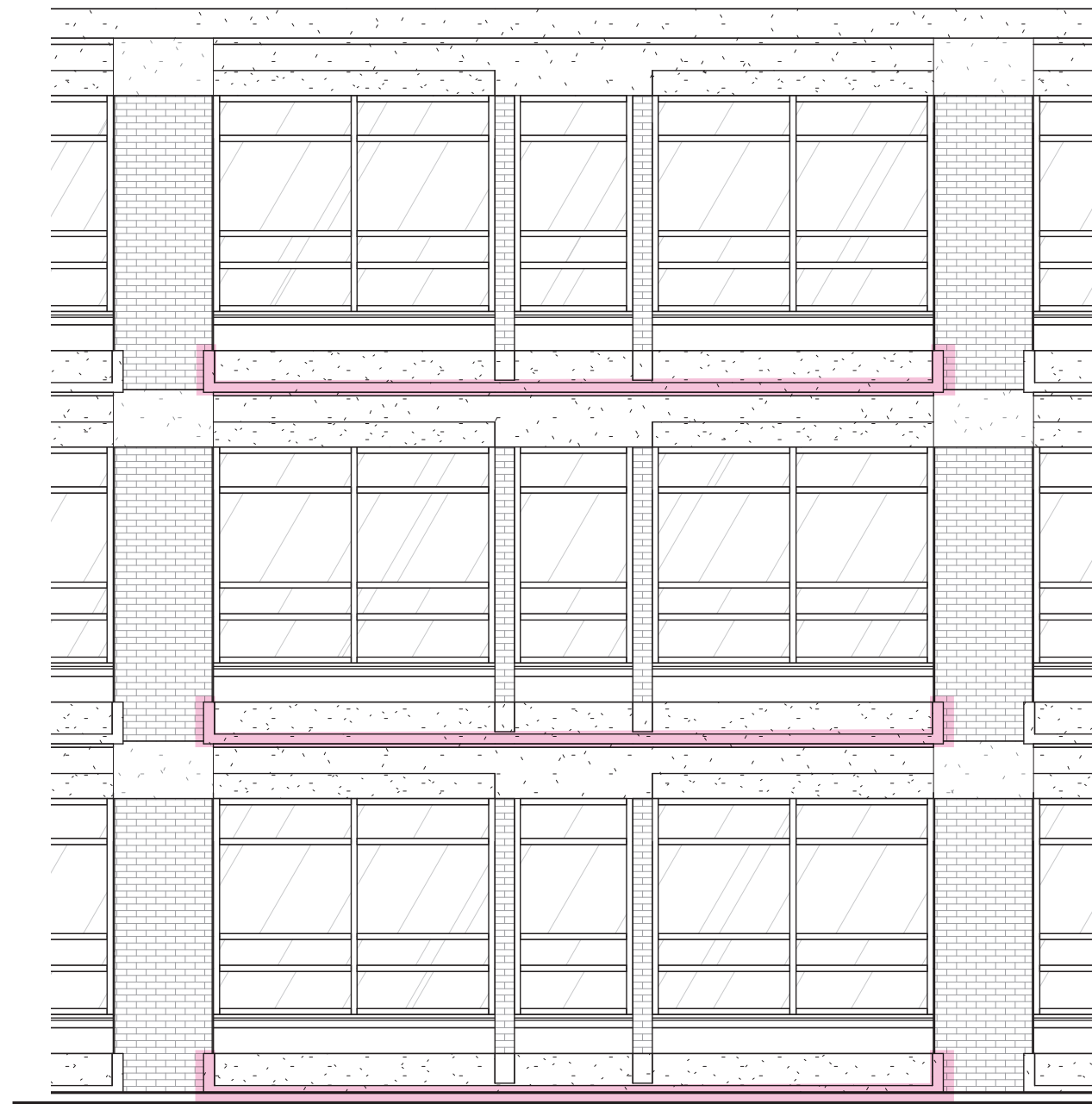




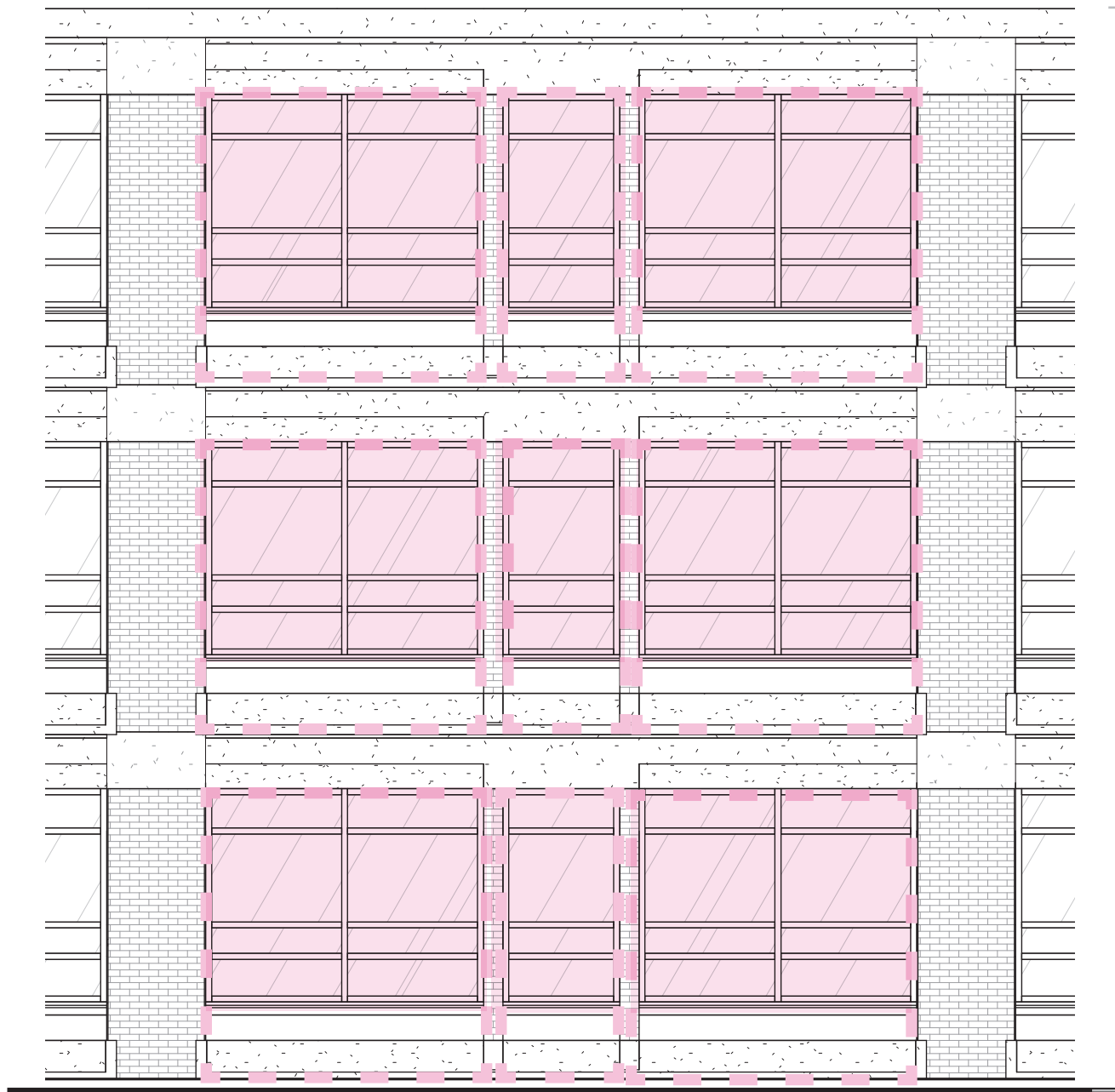
ENLARGED TYPICAL BAY



WALL SECTION







ENLARGED TYPICAL BAY - PERCEIVED | GLAZED OPENING

TOP

- T.4 - Cooing and Counter flashing
- T.3 - Recessed Drip Edge
- T.2 - Recessed Fascia
- T.1 - Classroom Opening Sloped Head

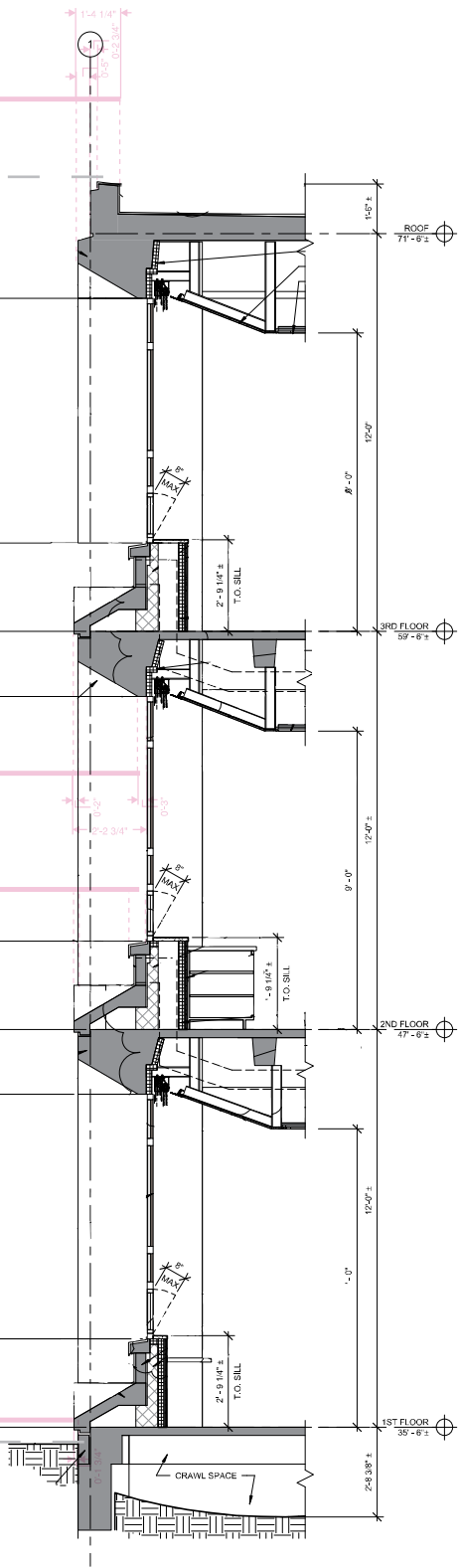
MIDDLE

- M.7 - CIP Projecting Frame
- M.6 - Shadow Line + Reveal
- M.5 - CIP Chamfer Plane
- M.4 - Mullion and Glazing

- M.4 - Mullion and Glazing
- M.3 - CIP Sill Plane
- M.2 - Shadow Line + Reveal
- M.1 - CIP Projecting Frame

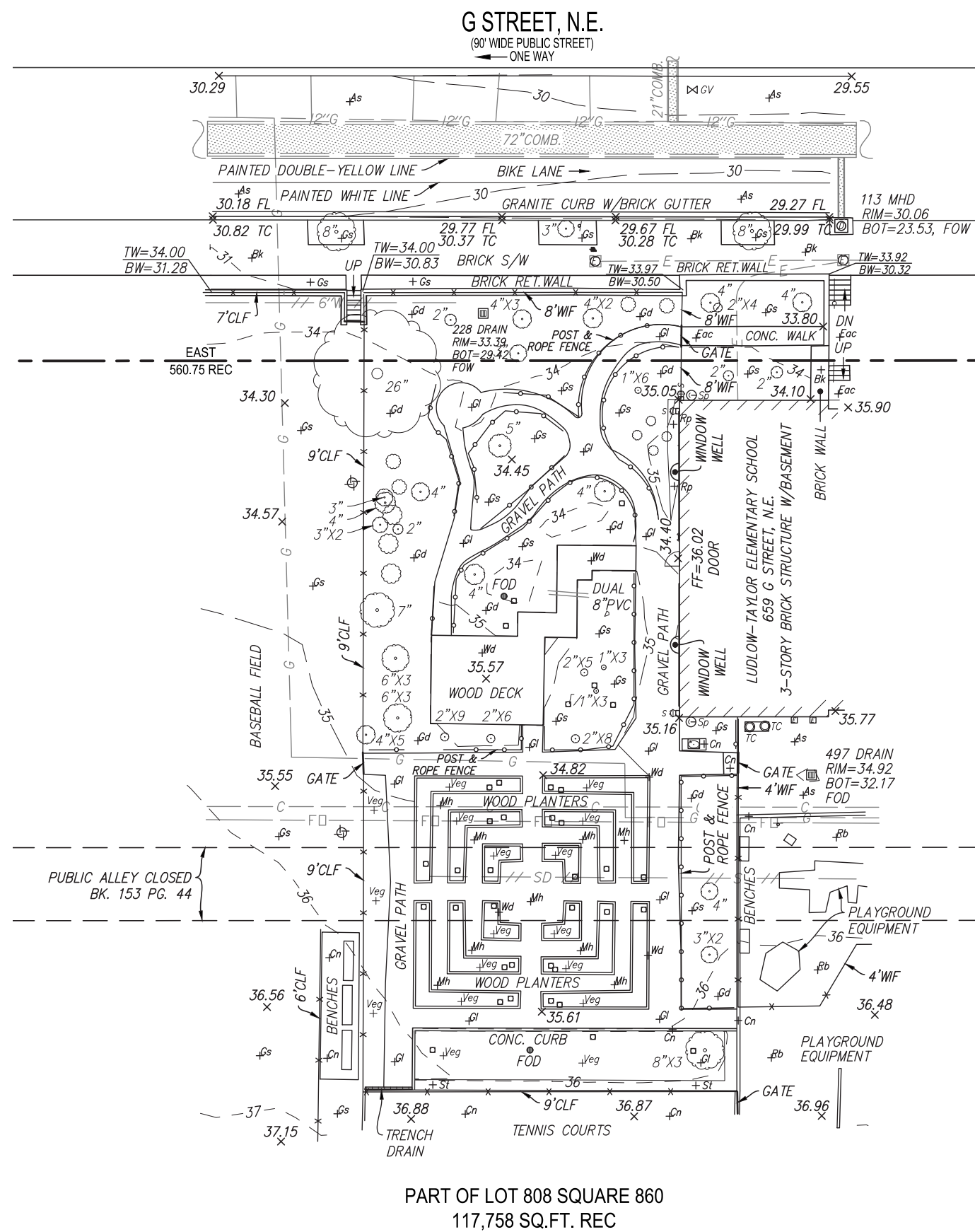
BASE

- B.3 - CIP Sill Frame
- B.2 - Shadow Line + Reveal
- B.1 - Face Brick



WALL SECTION





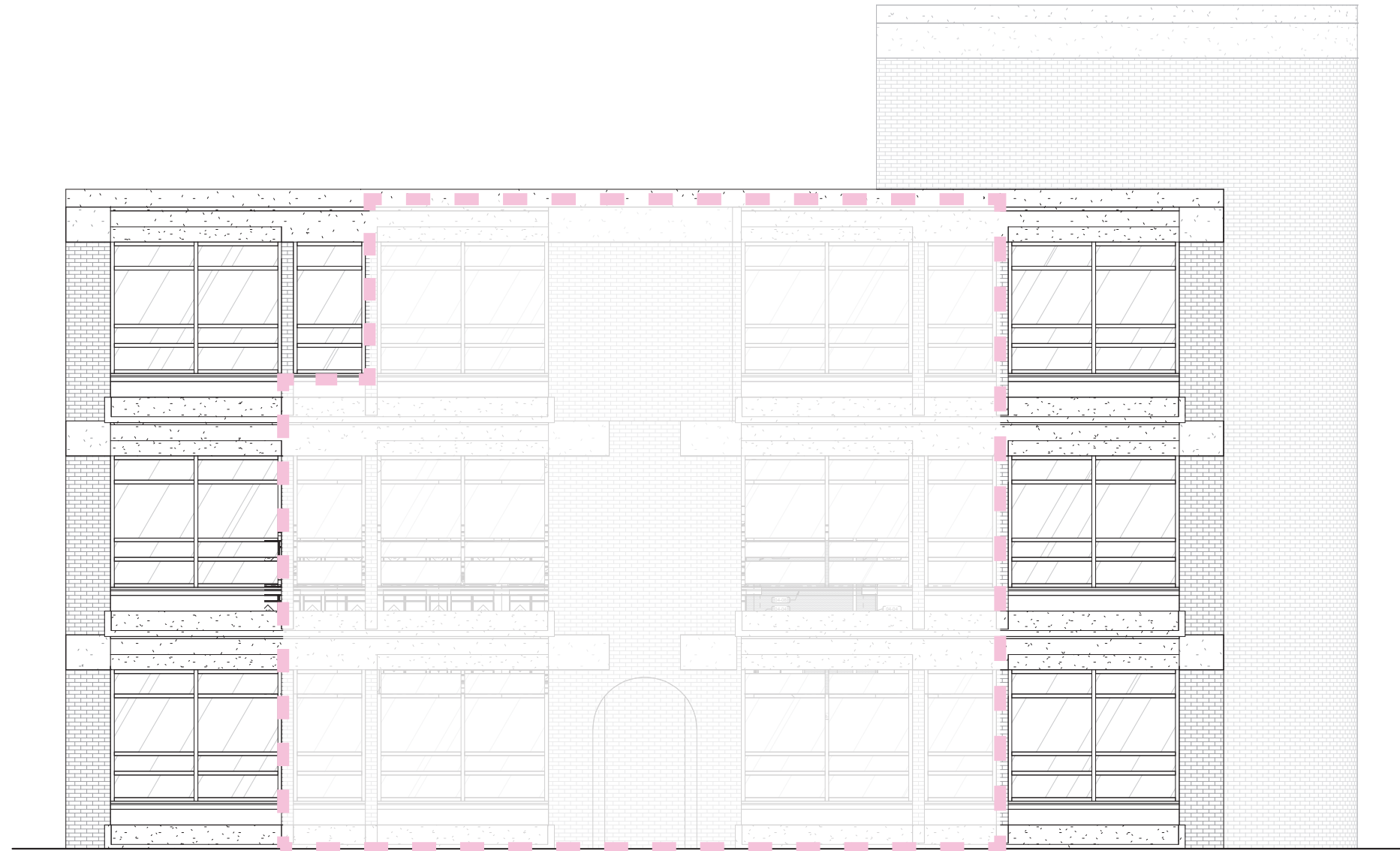






# 4 CONCEPTUAL APPROACH





**WEST ELEVATION - DIAGRAMAMTIC OVERLAY, CONNECTION**

PROGRAM REVIEW

	QTY	SIZE (EA)
ACADEMIC SPACES		
EARLY CHILDHOOD CLASSROOM	4	1025*
EARLY CHILDHOOD STORAGE	4	100
EARLY CHILDHOOD RESTROOM	4	60
RESOURCE ROOM	2	360
TEACHER COLLABORATION ROOM	1	300
LAUNDRY ROOM	1	80
SUBTOTAL		5760
BUILDING SERVICES		
CUSTODIAL CLOSET	2*	25
ELECTRICAL CLOSET	TBD	TBD
MDF ROOM	1	200
IDF ROOM	3	100
CORRIDORS	TBD	TBD
MECHANICAL SPACE	TBD	TBD
SUBTOAL		550
TOTAL PROGRAM		
NET PROGRAM	-	6,310
GROSS PROGRAM	-	8,771

Landscape Site Plan

- 1

existing street tree to remain, typical
- 2

existing sidewalk
- 3

existing ornamental iron fence to remain
- 4

existing chain link fence to remain
- 5

existing field to remain
- 6

existing tree to remain
- 7

existing crushed gravel path to remain  
(topdress path after construction)
- 8

existing vegetable garden to remain
- 9

existing playground to remain
- 10

existing bioretention to remain
- 11

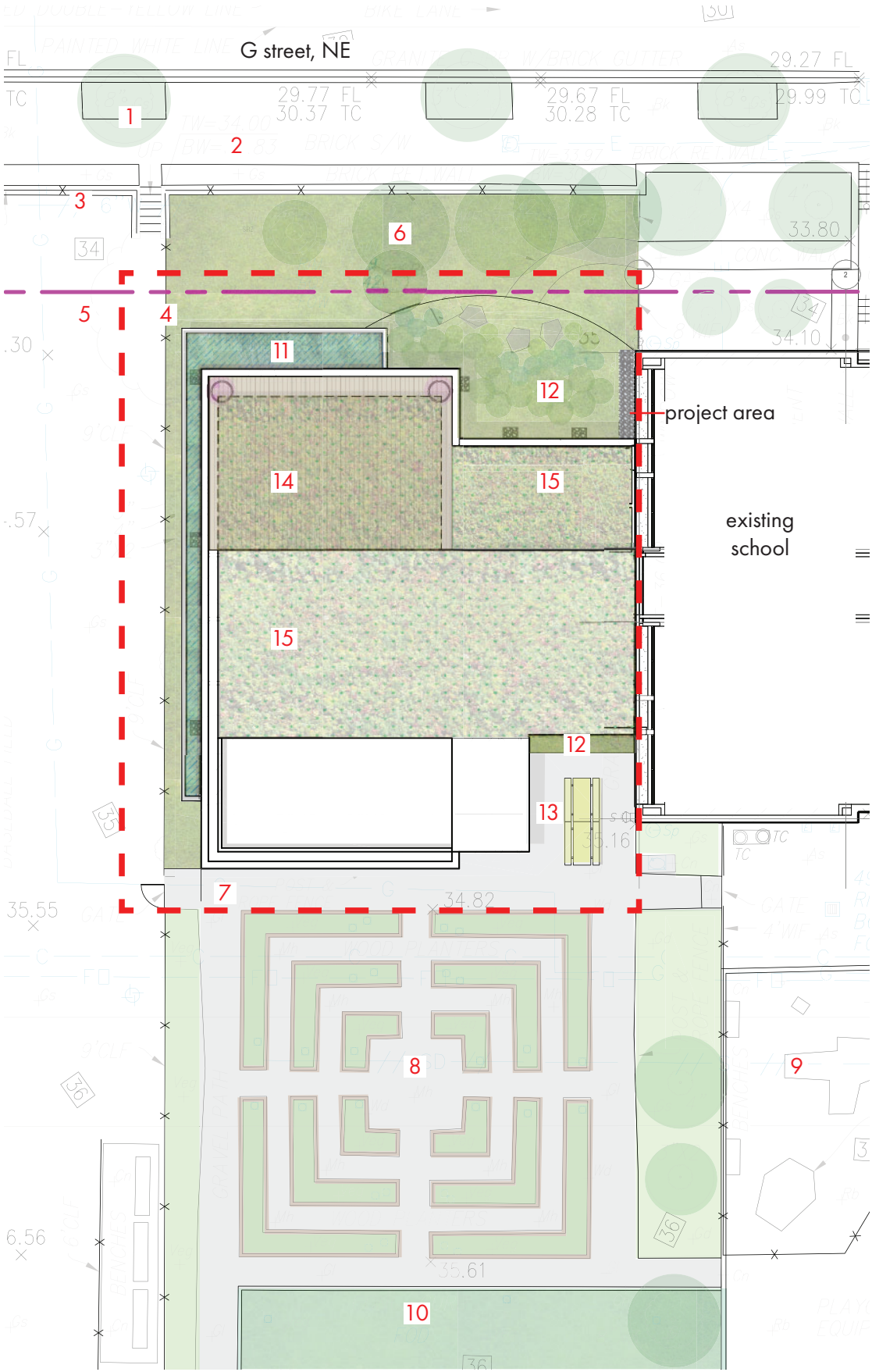
proposed bioretention planter
- 12

proposed planting area
- 13

proposed outdoor seating area
- 14

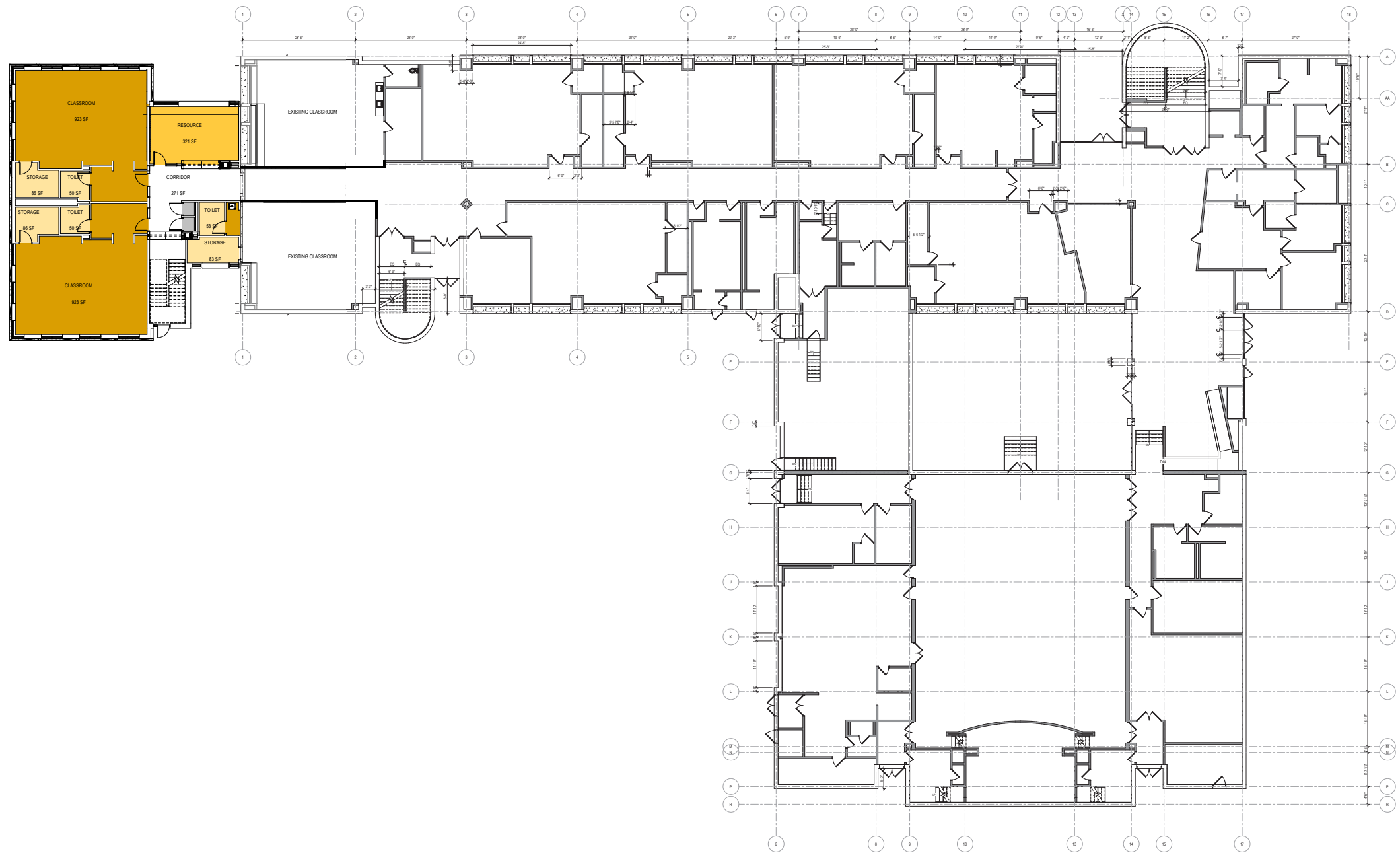
proposed outdoor rooftop classroom
- 15

proposed green roof

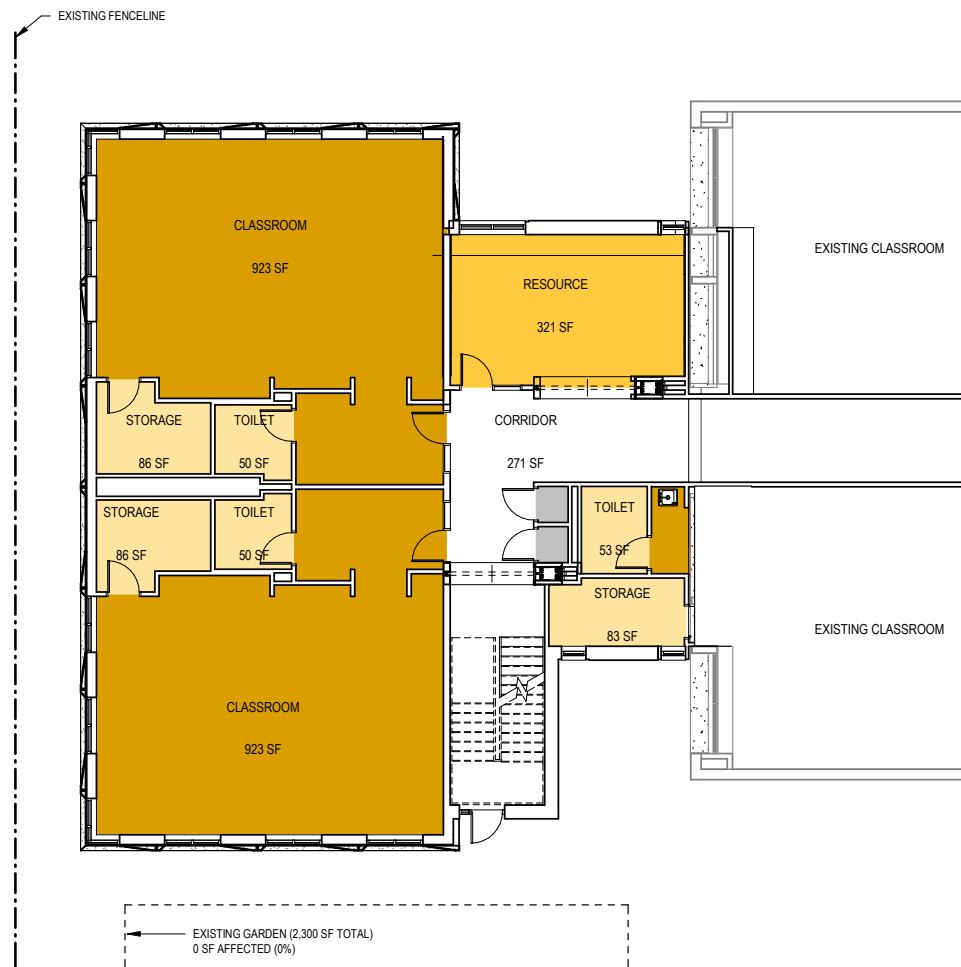


SITE PLAN

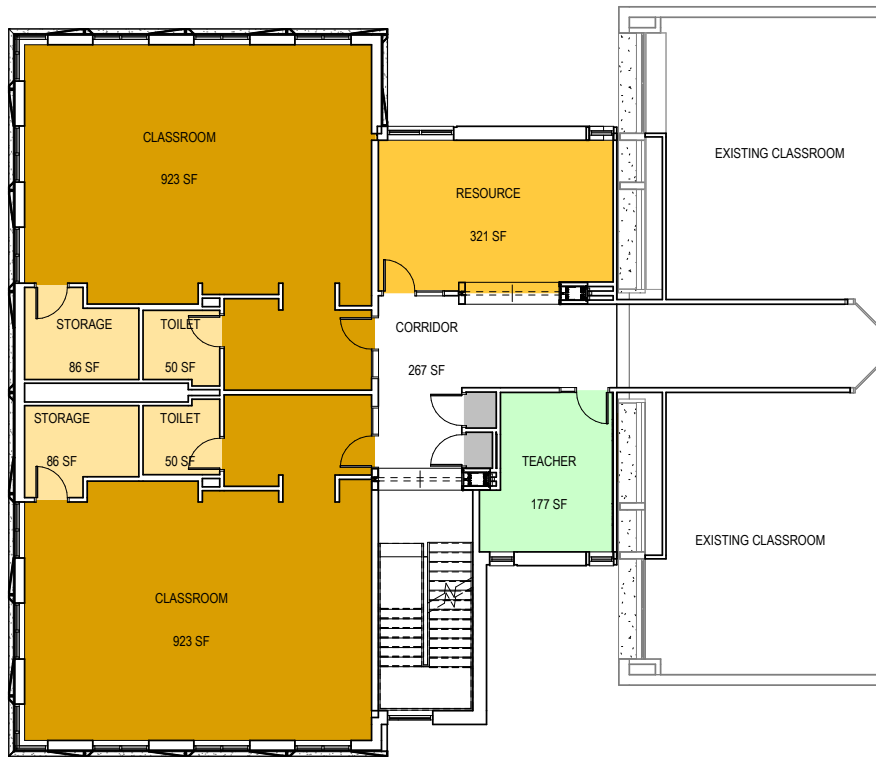




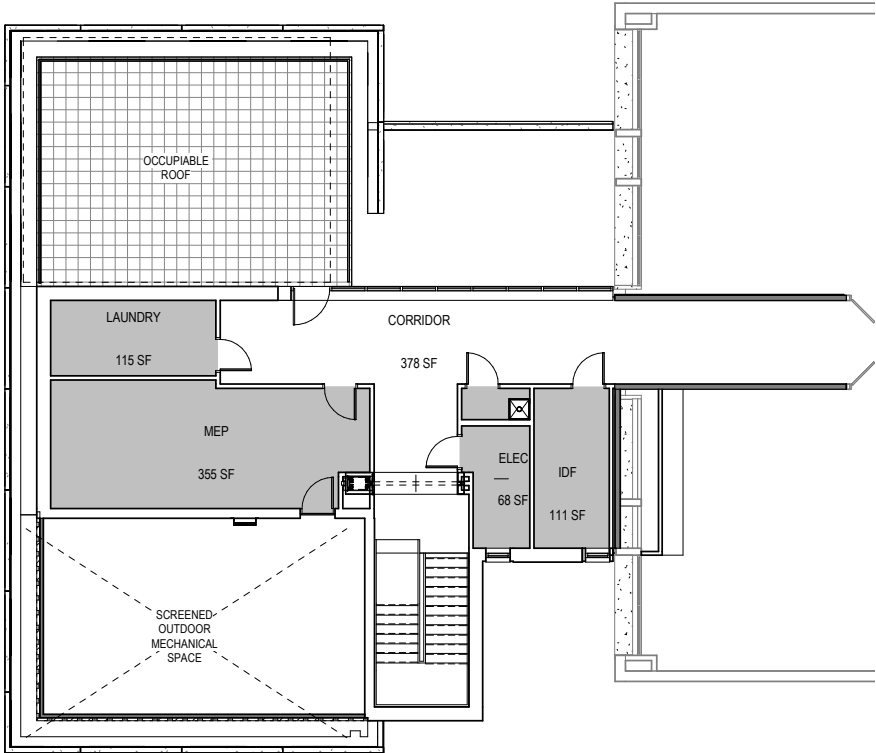
01 FIRST FLOOR PLAN



01 ENLARGED FIRST FLOOR

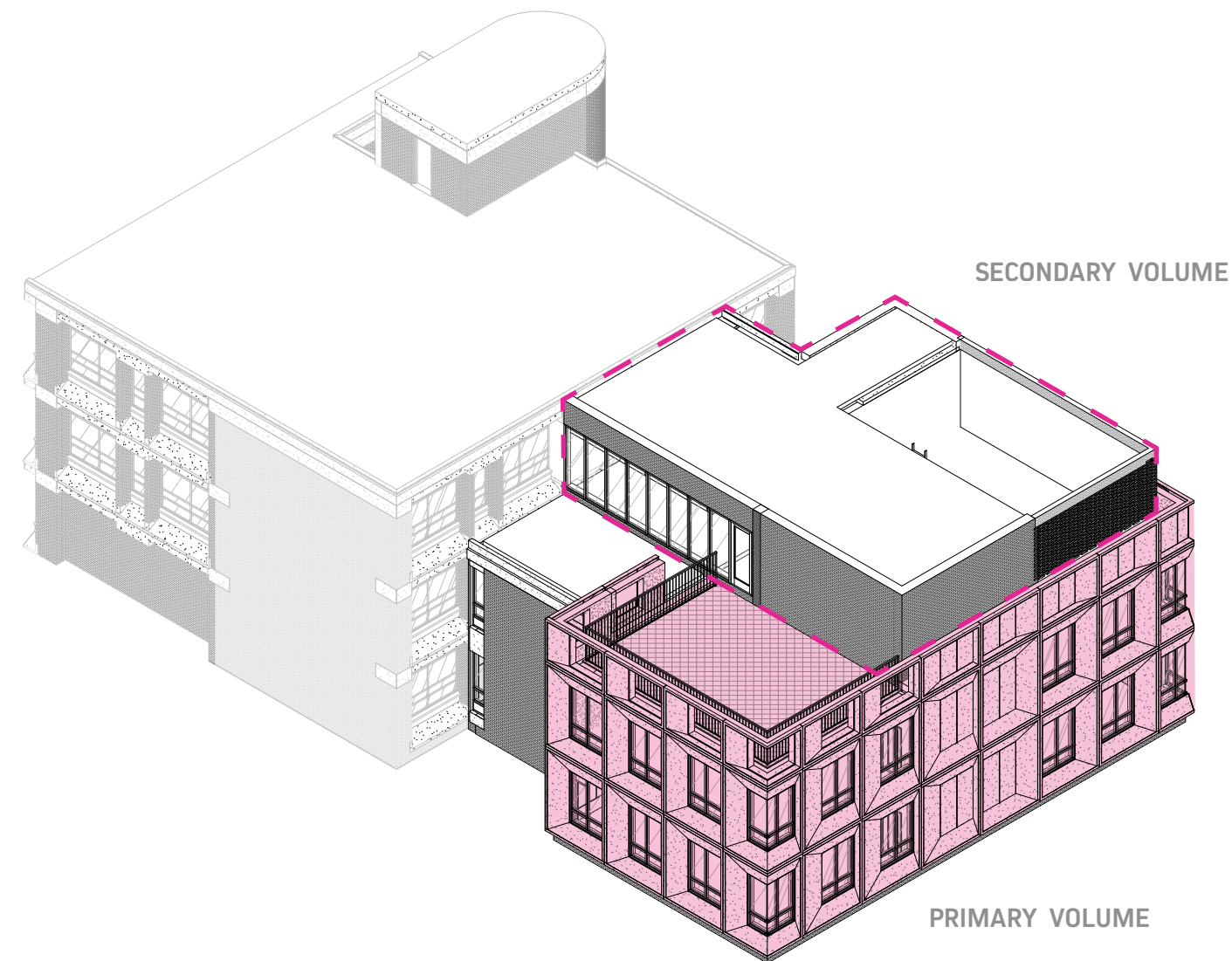
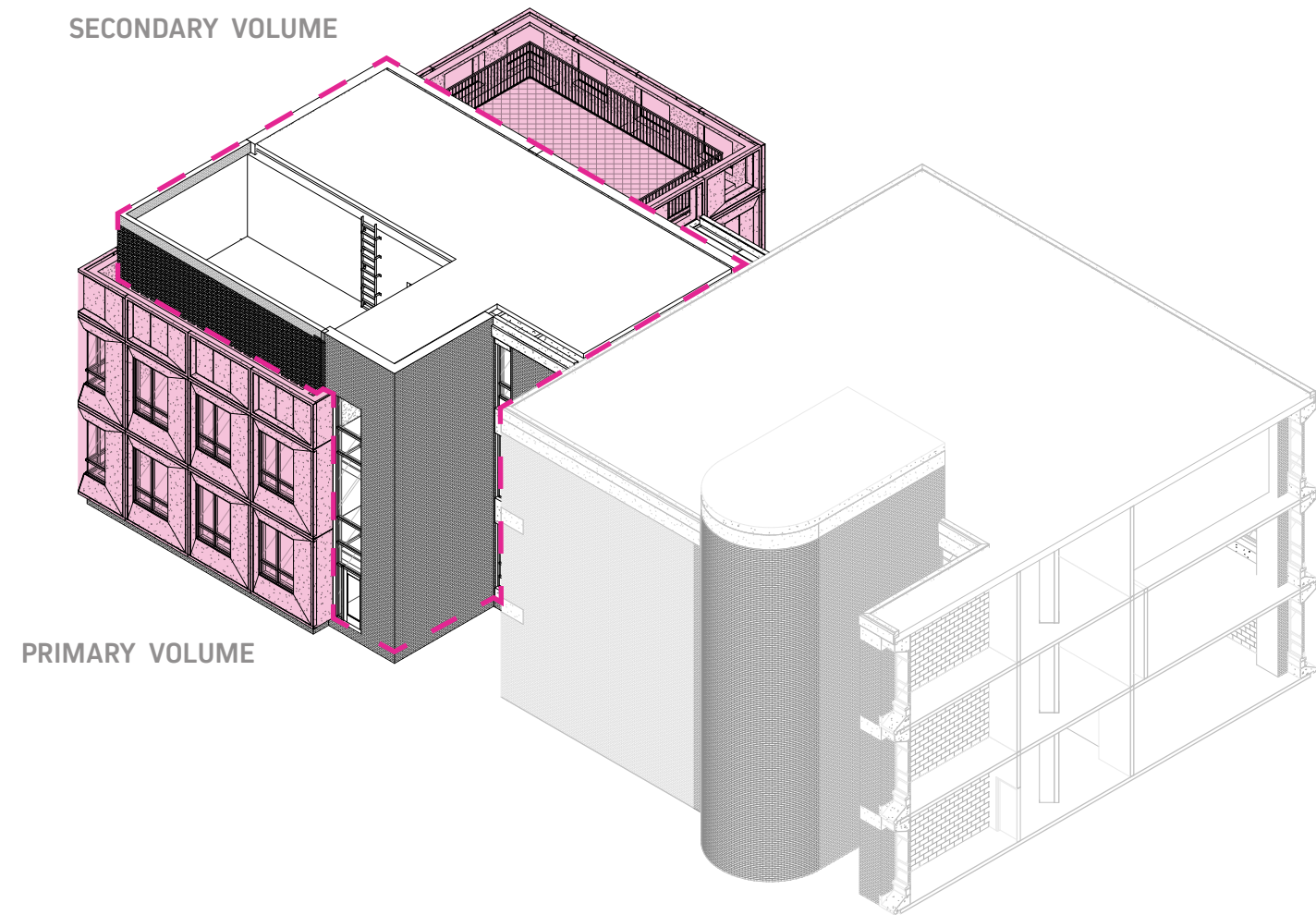


02 ENLARGED SECOND FLOOR

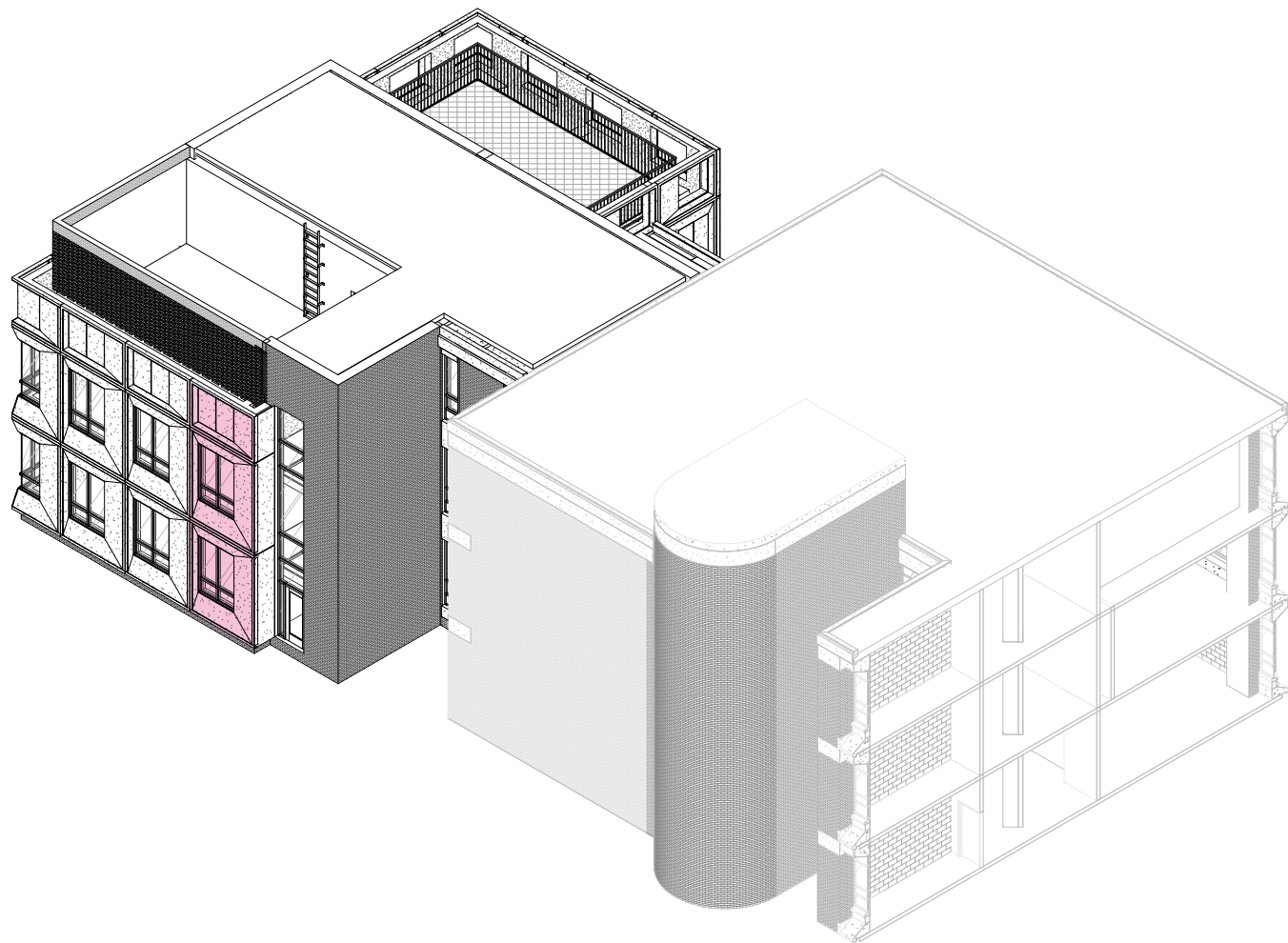


03 ENLARGED THIRD FLOOR

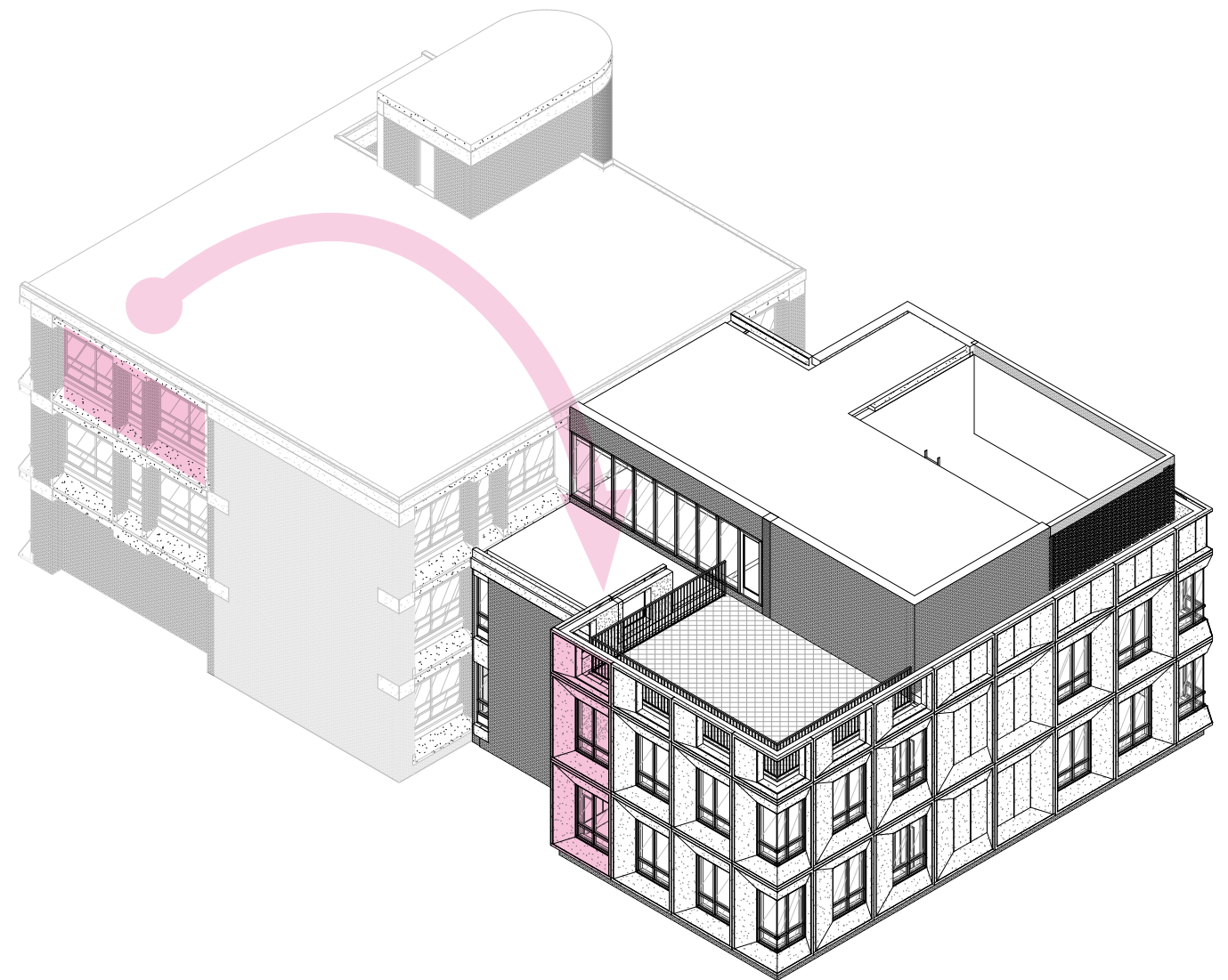




## ADDITION - ISOMETRIC VIEWS

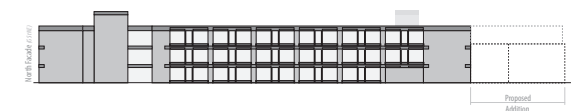


HORIZONTAL BAY | VERTICAL BAY

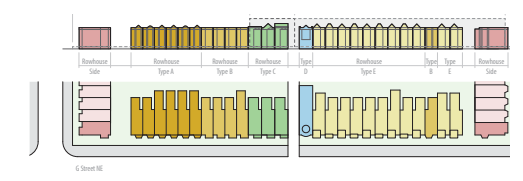
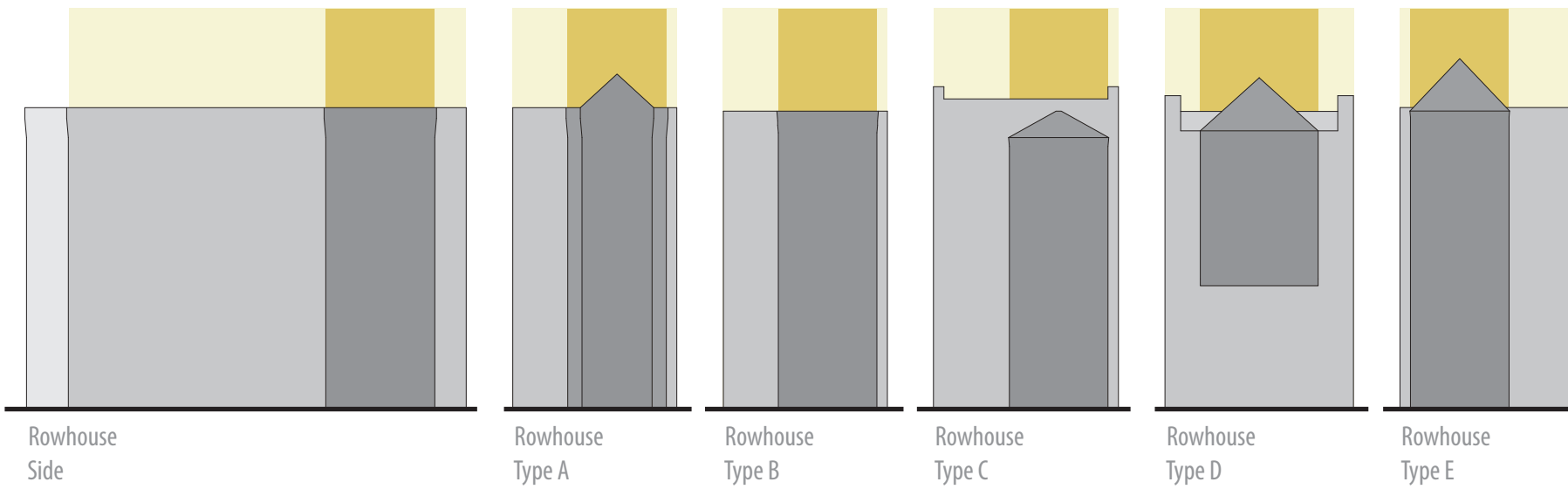
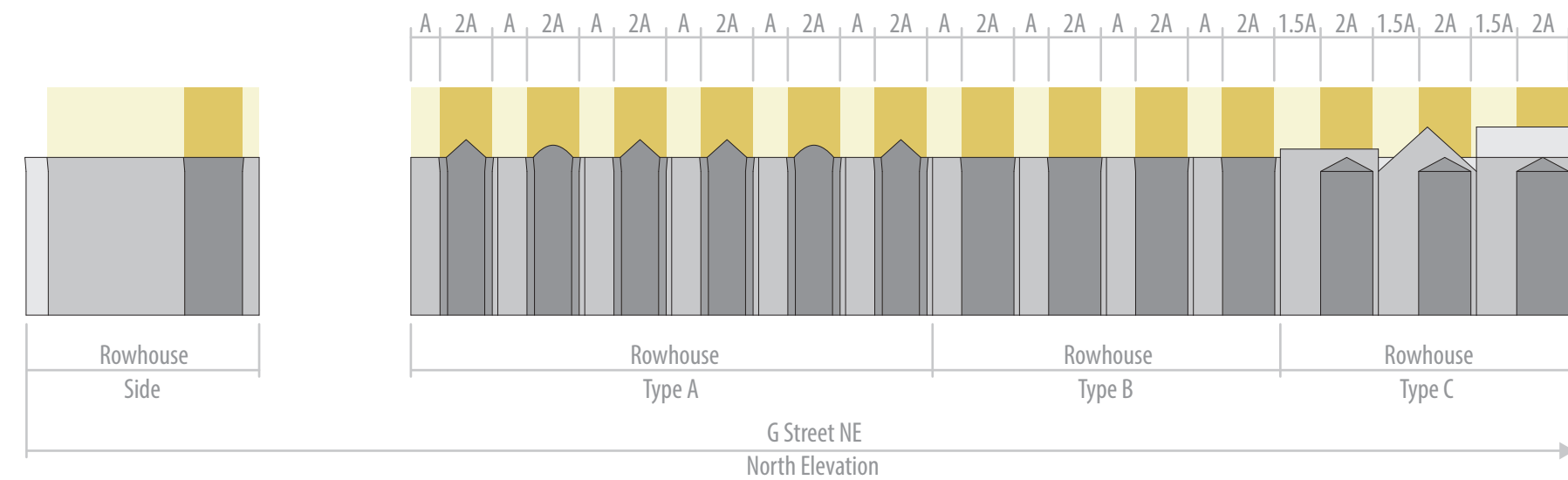


HORIZONTAL BAY | VERTICAL BAY

## ADDITION - ISOMETRIC VIEWS







MODULE

A 2A



NORTH ELEVATION

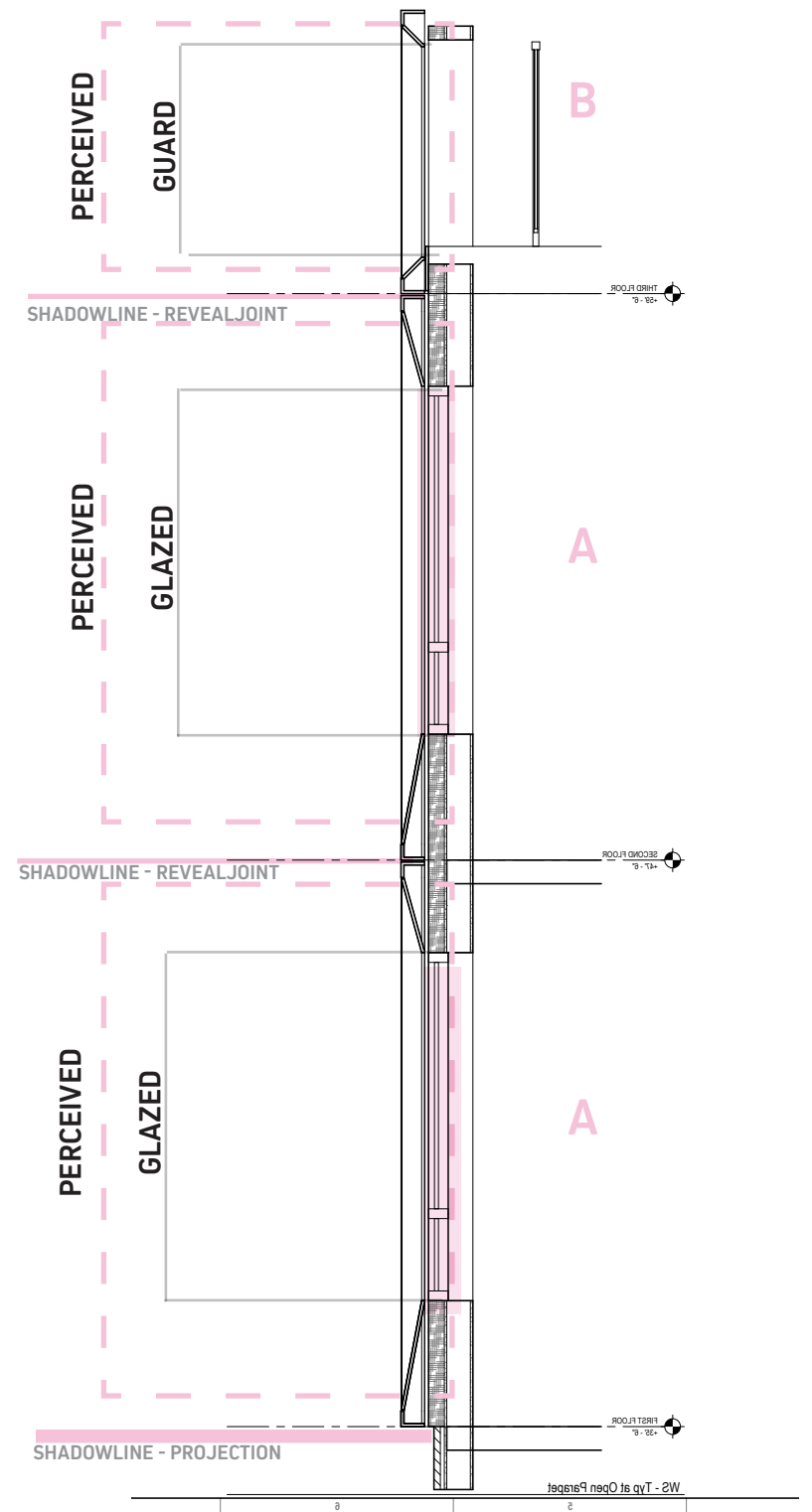
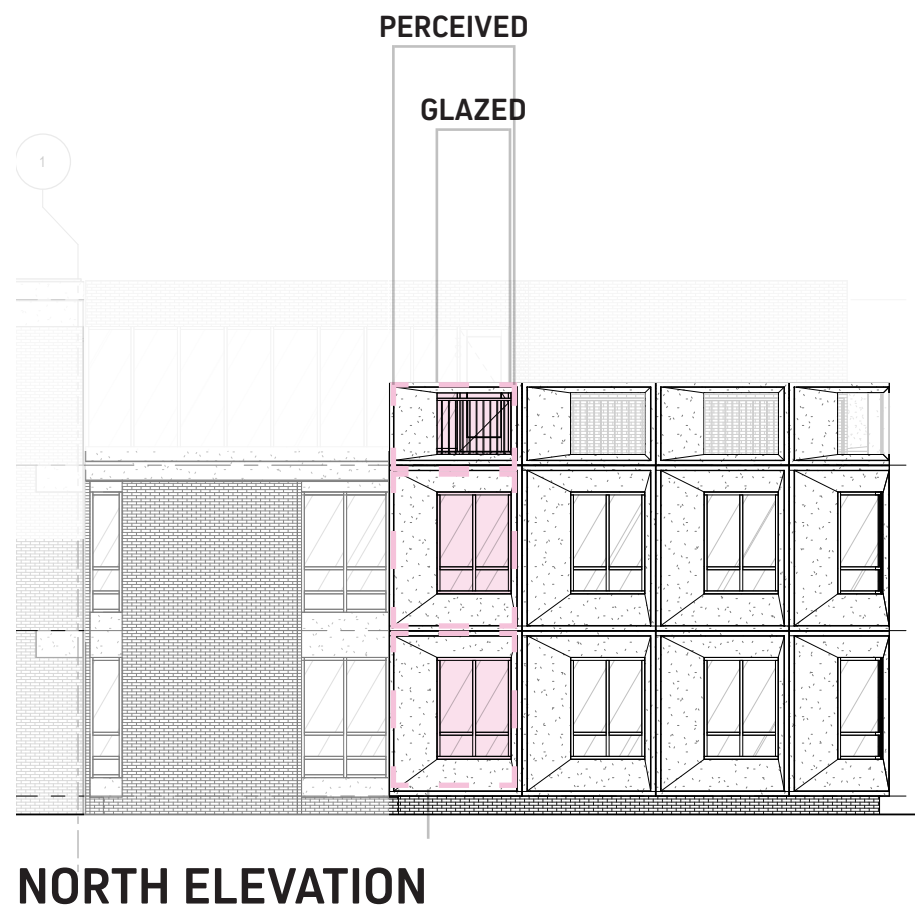


WEST ELEVATION

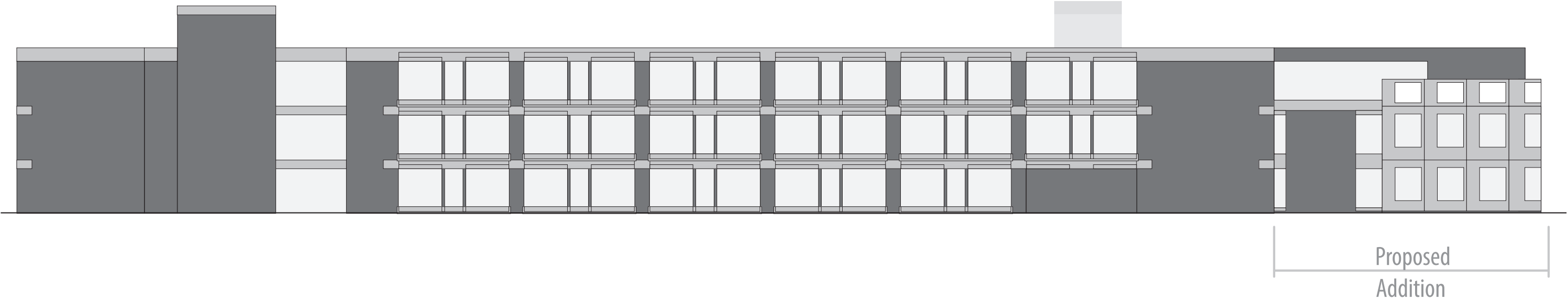


SOUTH ELEVATION

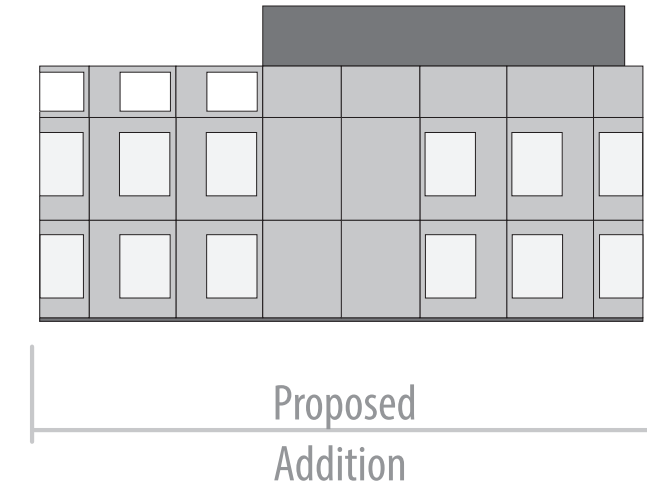




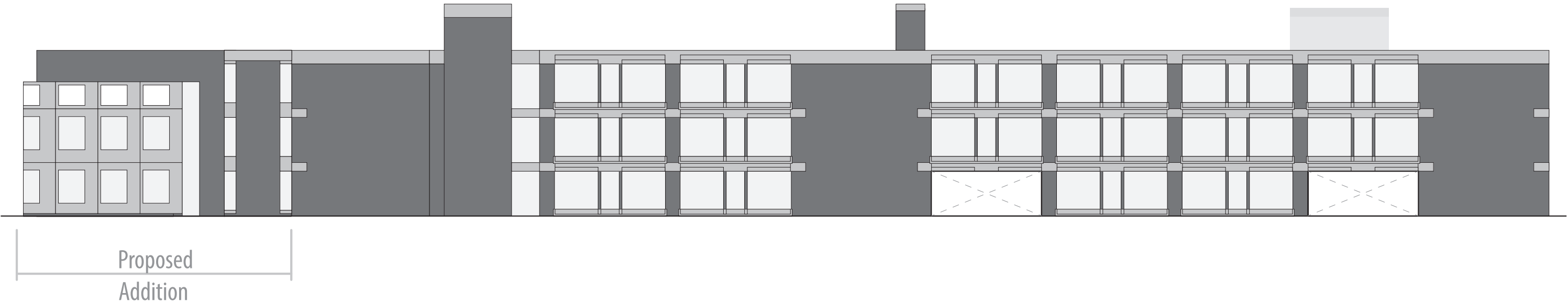
North Facade (G St NE)



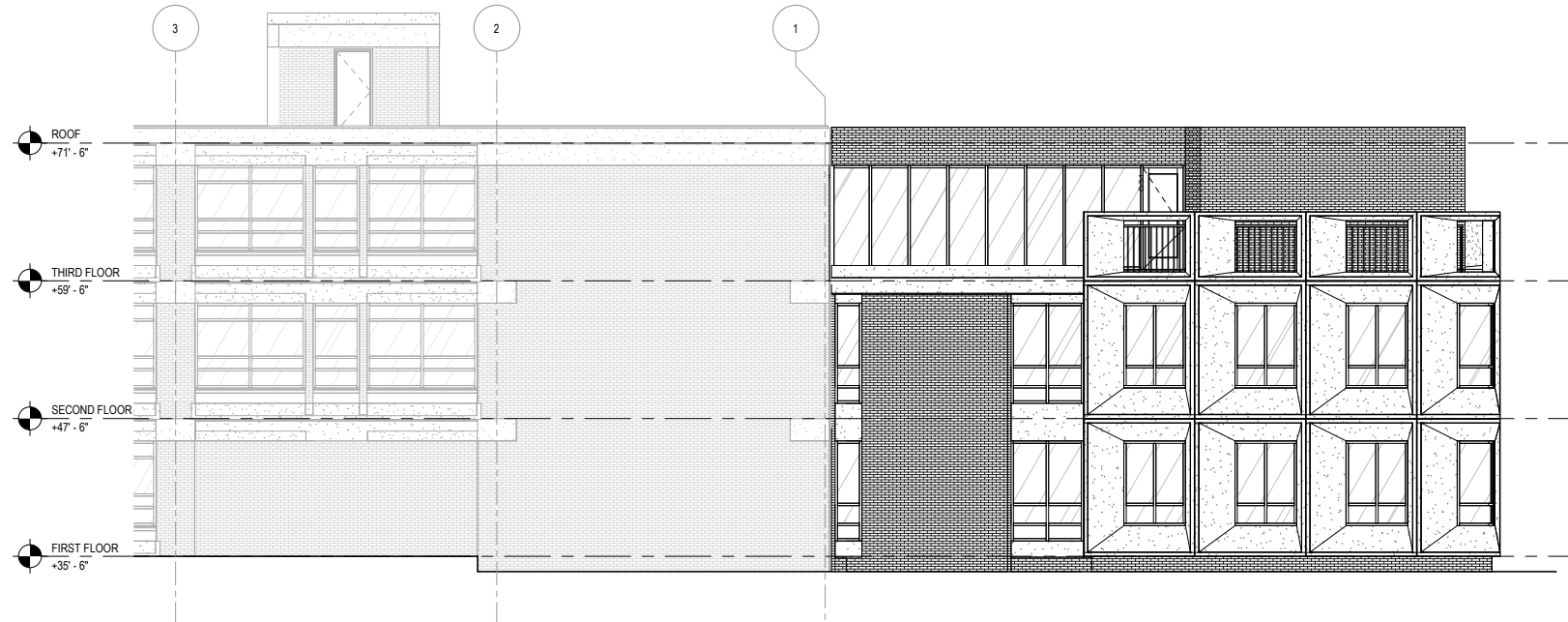
West Facade



South Facade (Playground)



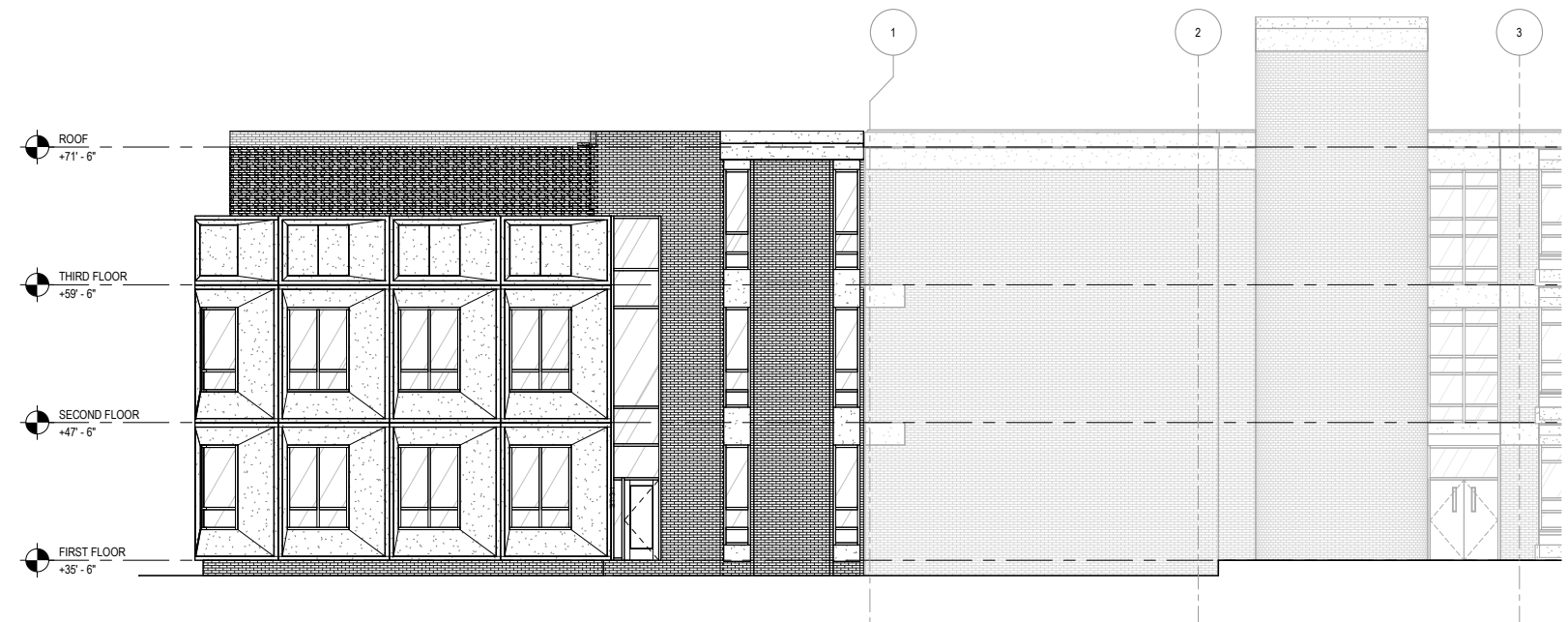




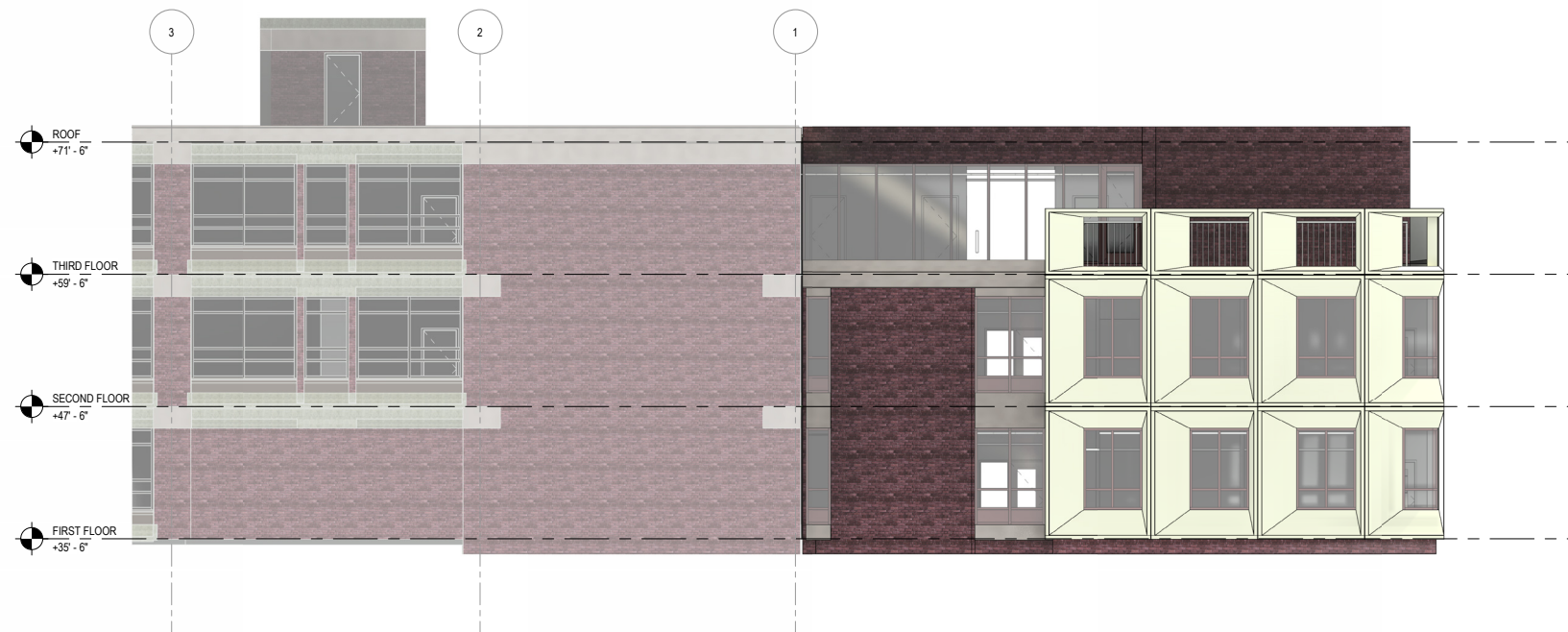
**NORTH ELEVATION - PARTIAL**



**WEST ELEVATION - PARTIAL**



**SOUTH ELEVATION - PARTIAL**



**NORTH ELEVATION - PARTIAL**



**WEST ELEVATION - PARTIAL**



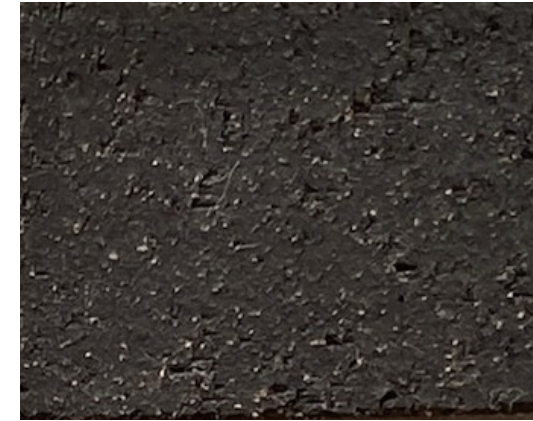
**SOUTH ELEVATION - PARTIAL**



## FIBER CEMENT/PRECAST



## BRICK



*\*MATERIALS TO BE SELECTED TO MATCH EXISTING PER FIELD OBSERVATIONS.*



















**THANK YOU**