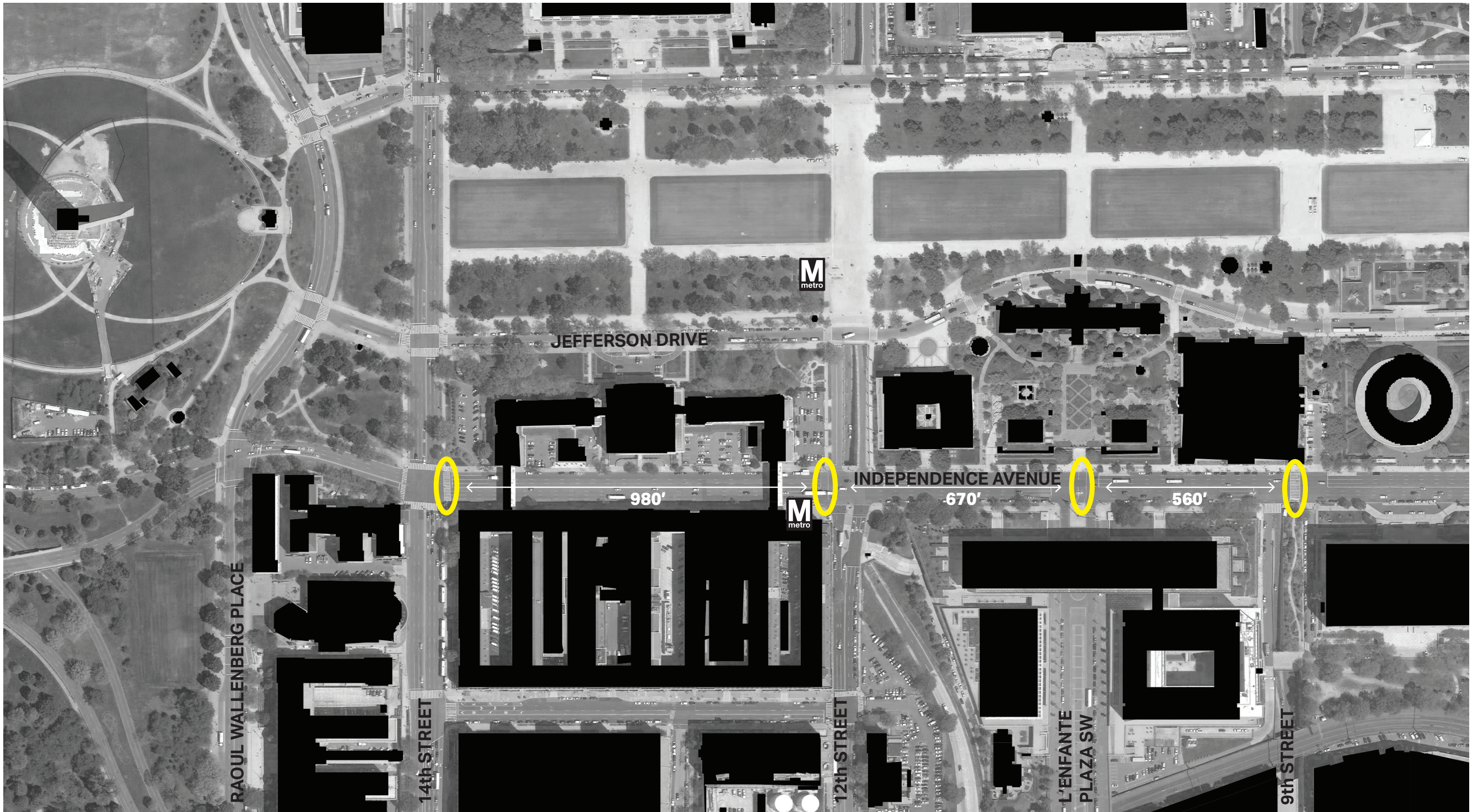




U.S. Commission of Fine Arts Concept Presentation
USDA Jamie L. Whitten Federal Building Security Plans

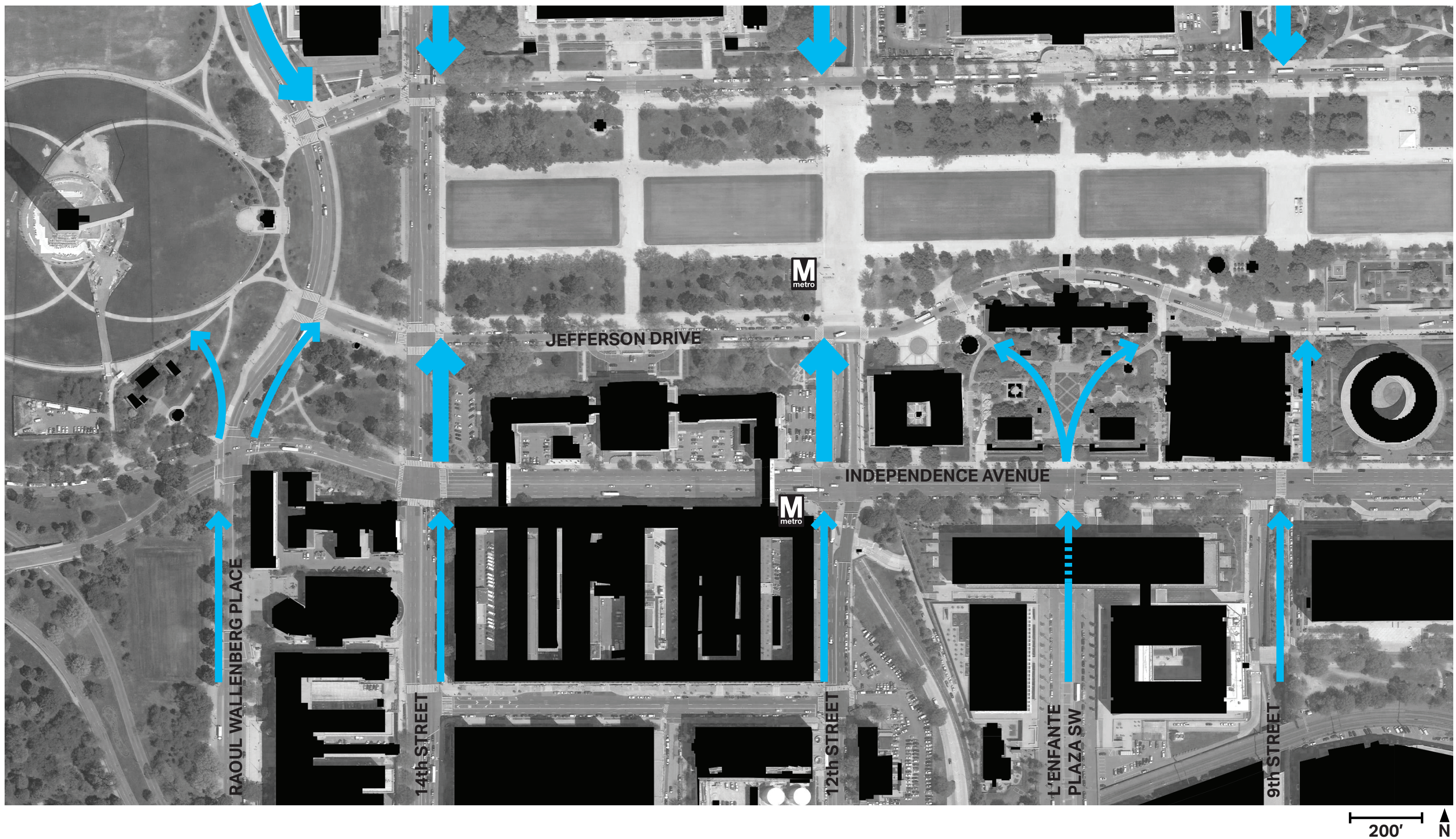
May 16, 2019



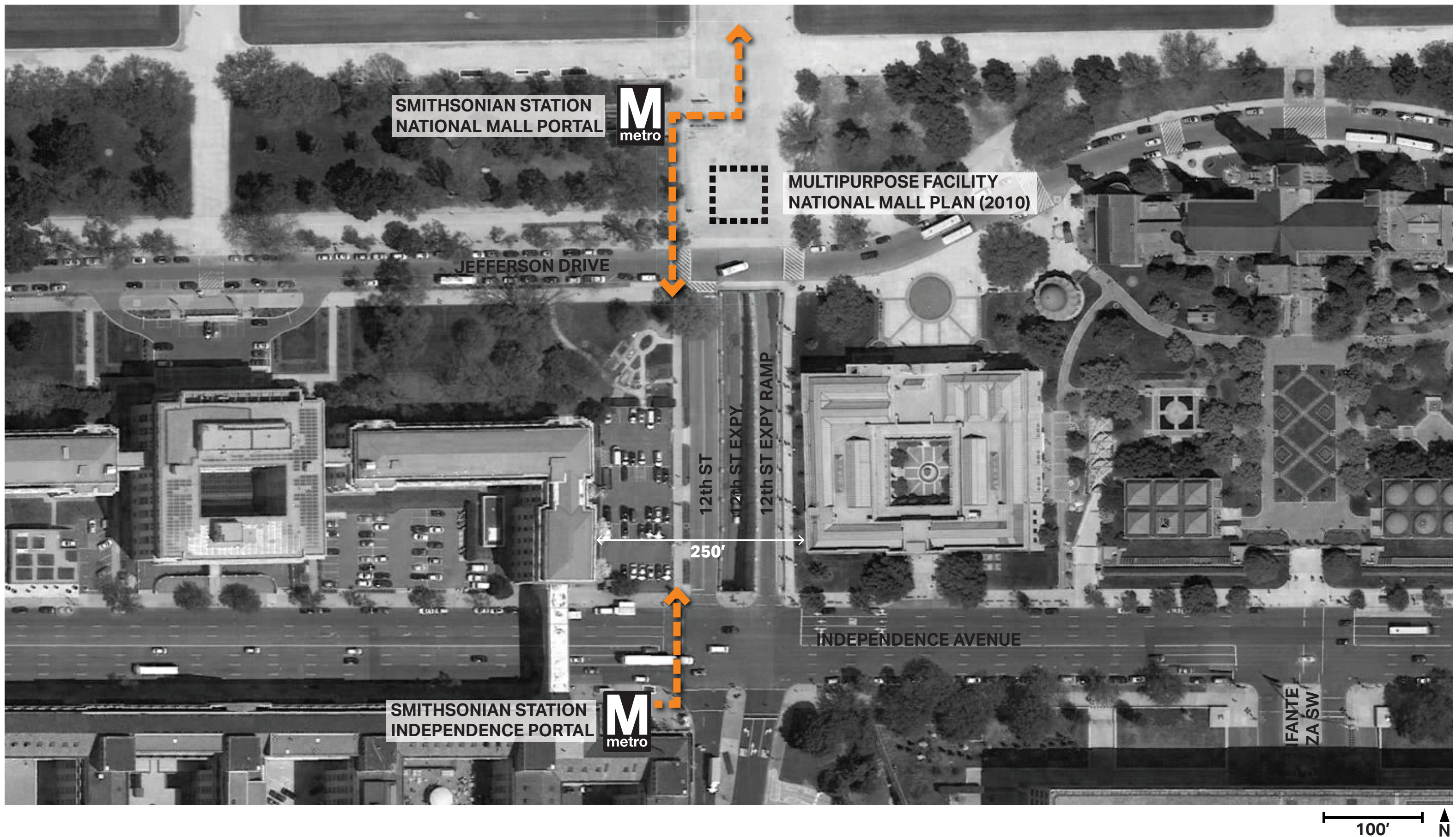


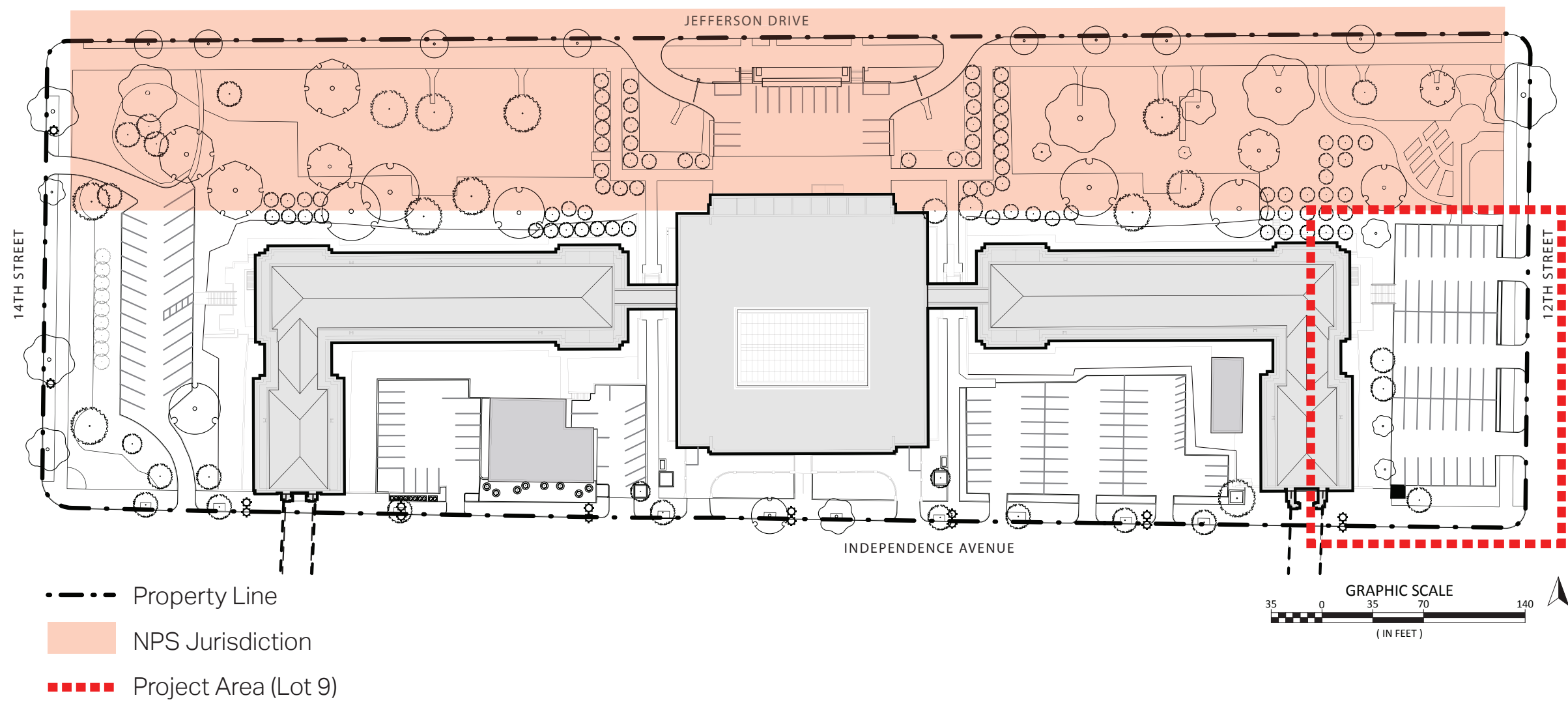
200' N

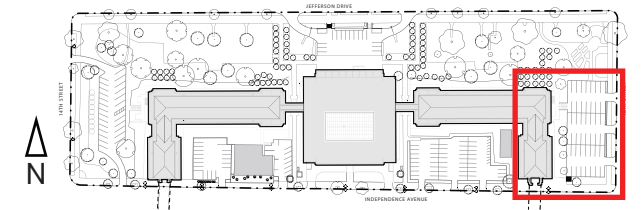
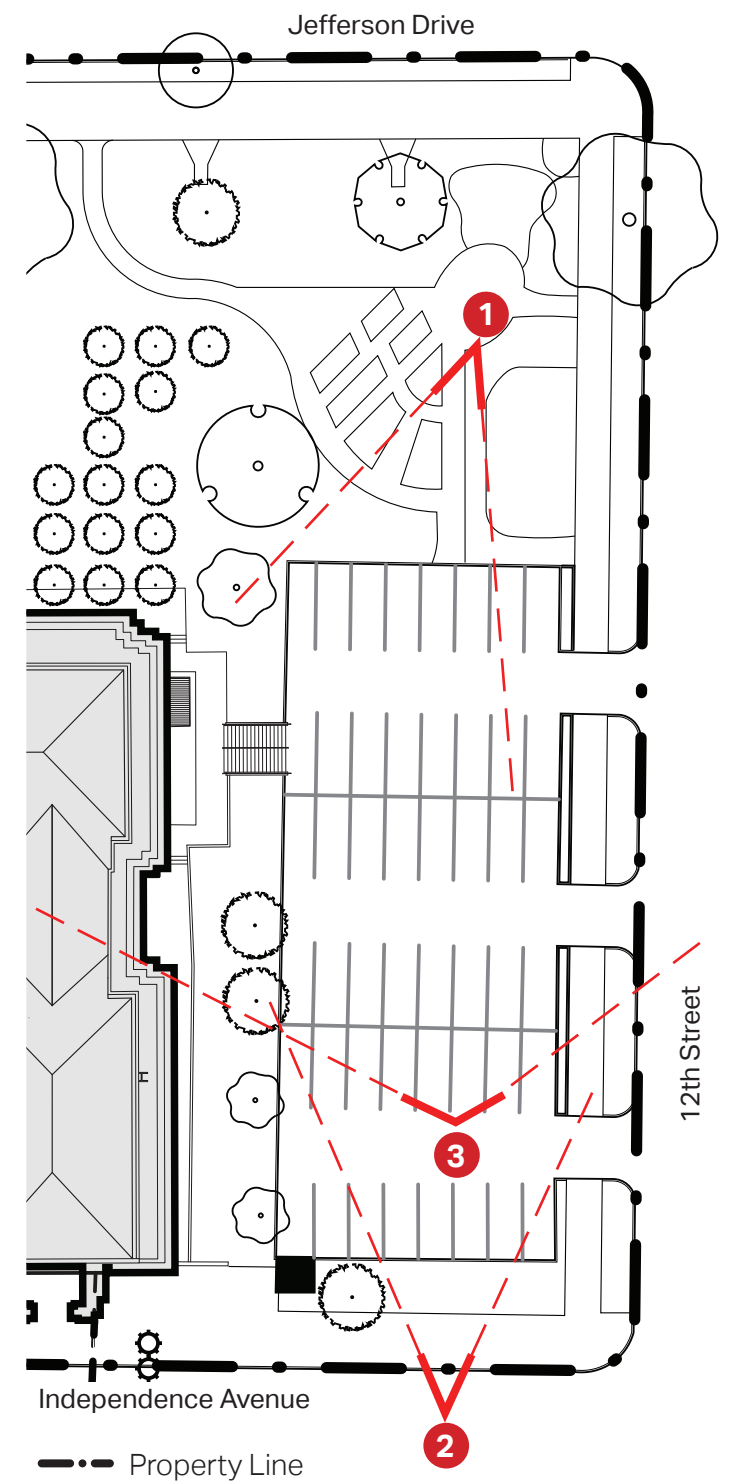
Context: Independence Avenue Crosswalks



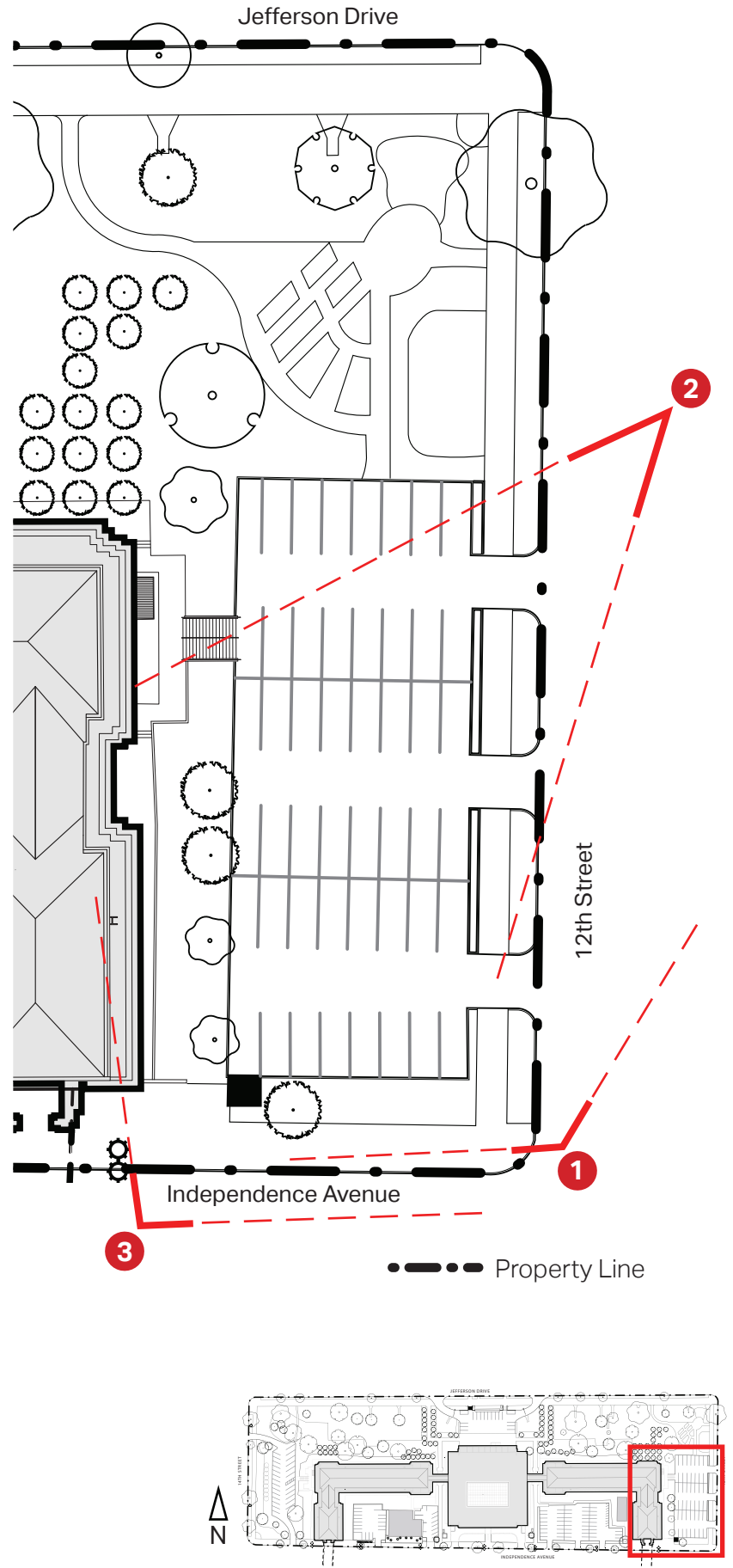
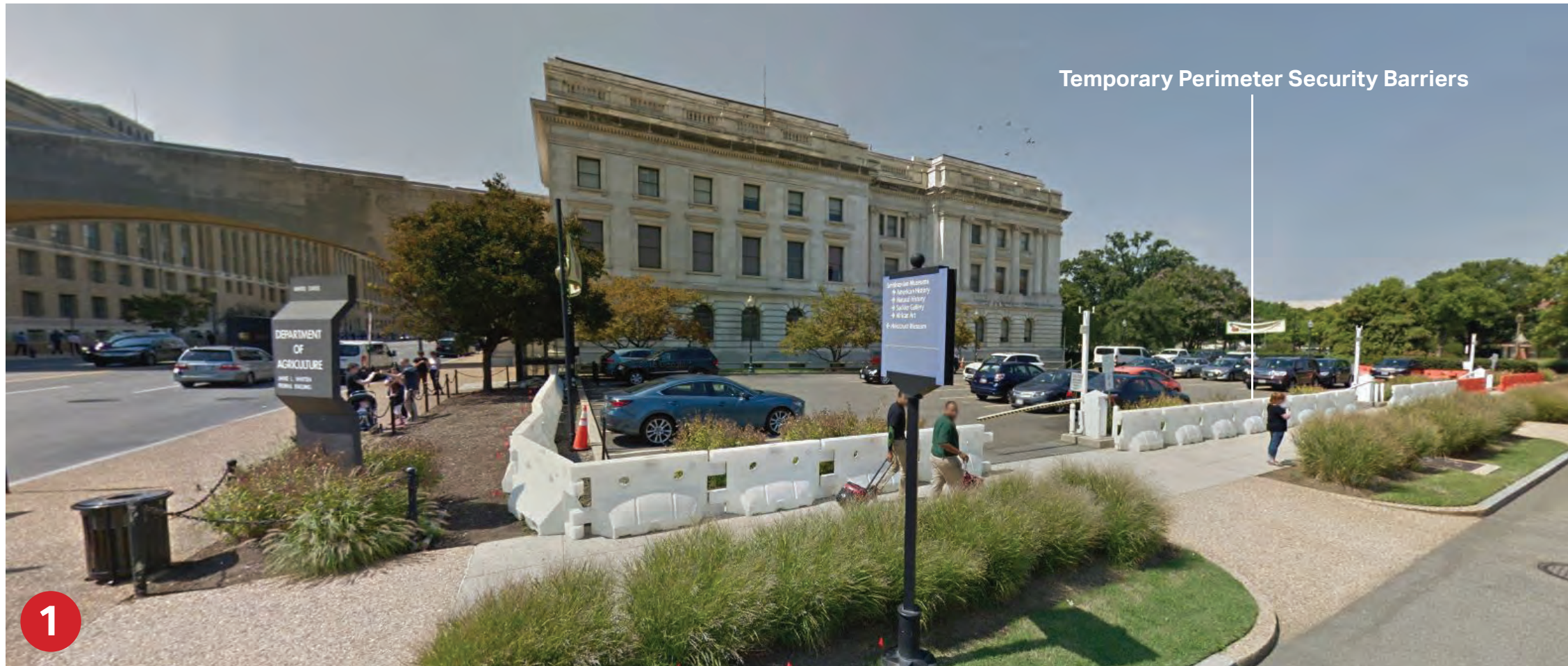
Context: Pedestrian Connections between Independence Avenue and National Mall



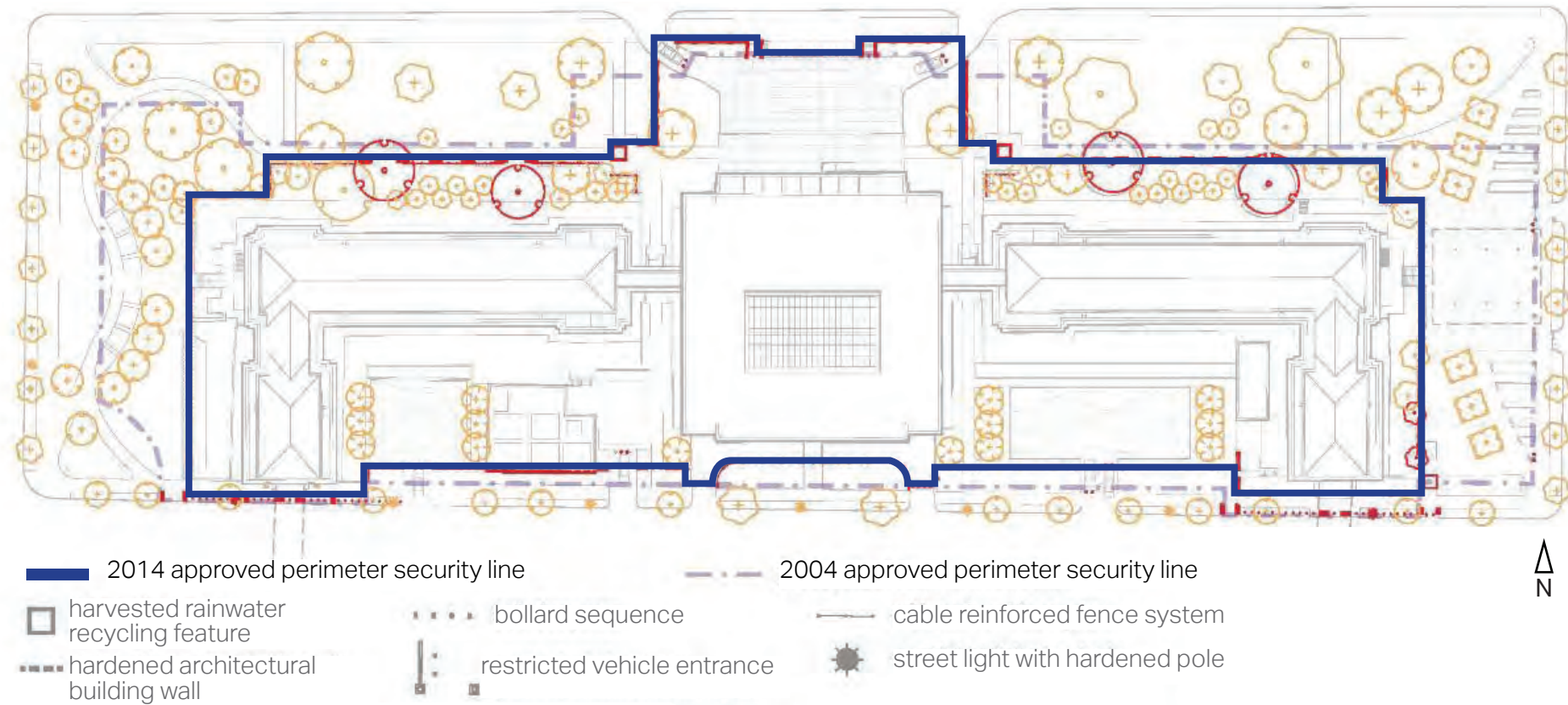




Lot 9 Existing Conditions - Farmers Market (Fridays, May-October, 9am-7pm)

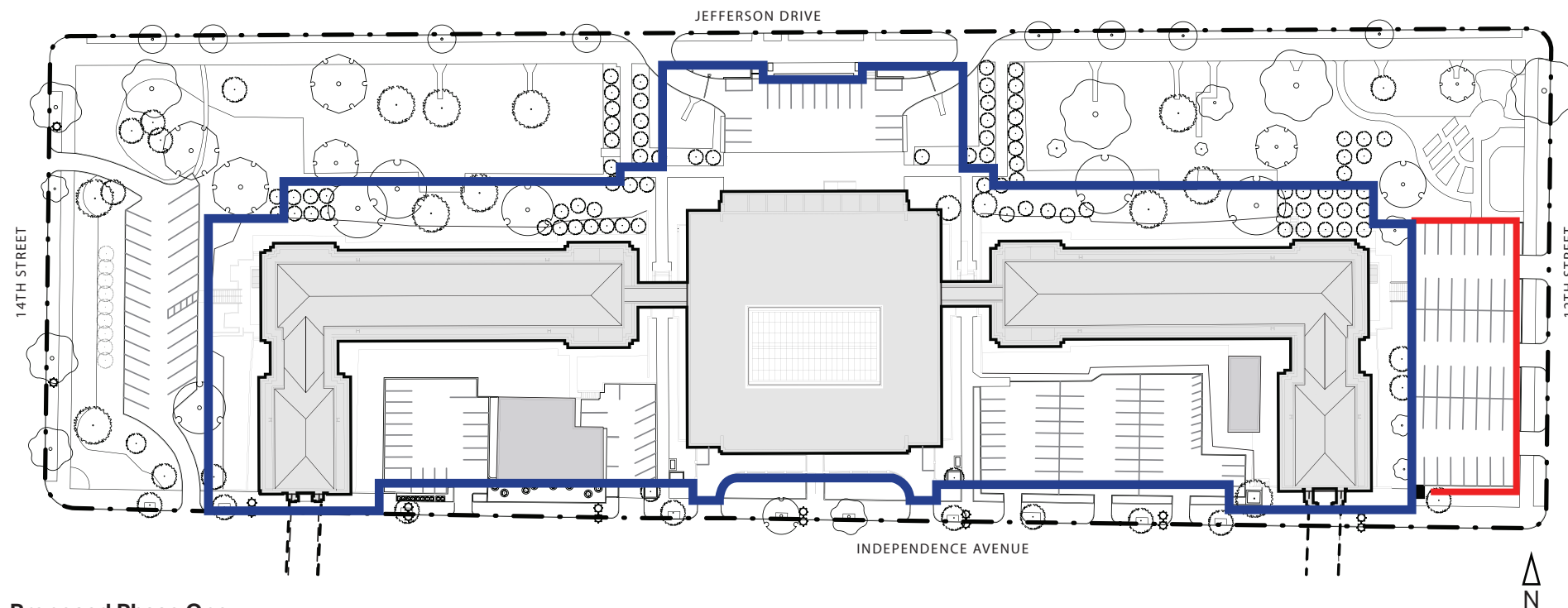


Lot 9 Existing Conditions - Typical Day



People's Garden Site Improvements and Perimeter Security
 USDA - (OLBN, Inc) Approved June 5, 2014

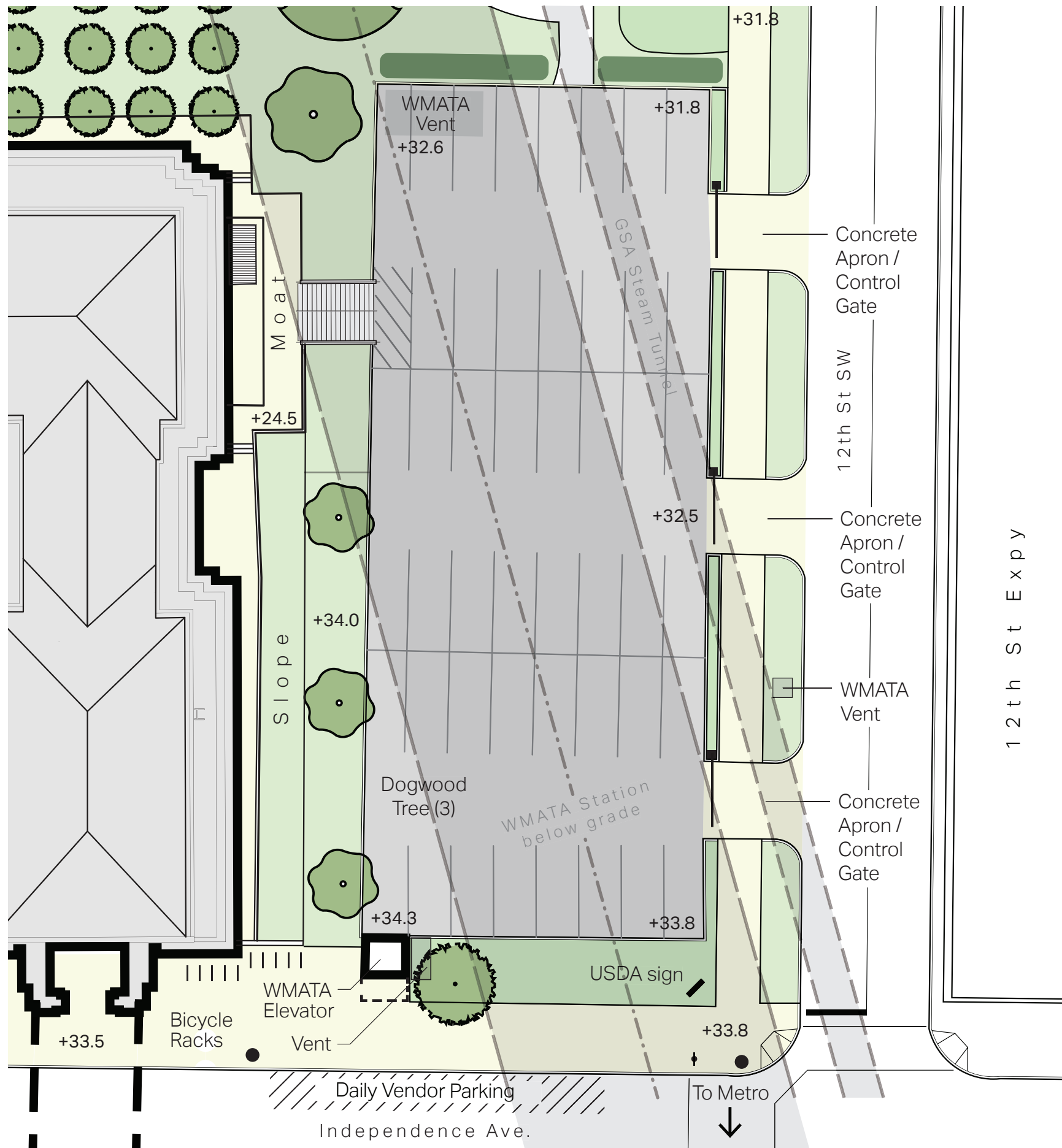
The "Concept and Improvements and Perimeter Security Plan" provides protection for facilities with minimal protection for outdoor activities where large crowds gather.



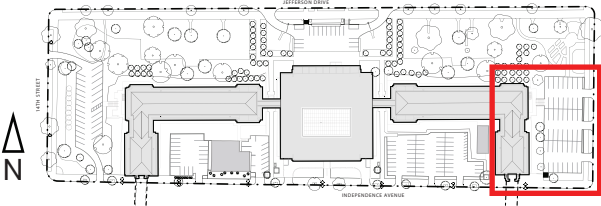
Proposed Phase One
 USDA - November, 2018

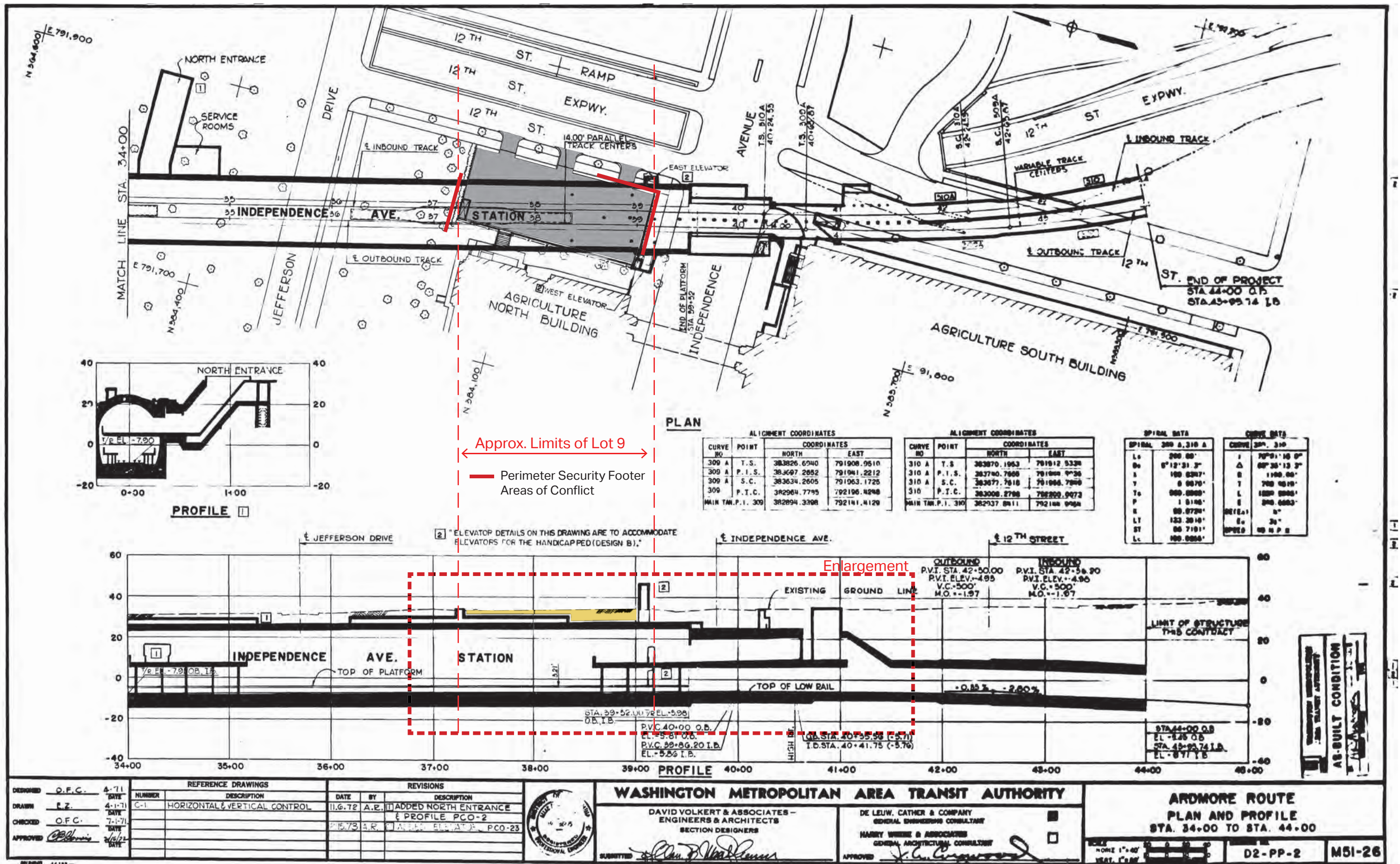
USDA wishes to deviate from the "Concept and Improvements and Perimeter Security Plan" and extend the crash barriers to protect Lot #9 which is the site of the USDA Farmer's Market

- Proposed Expansion of Security Measure
- 2014 Approved Perimeter Security Extents

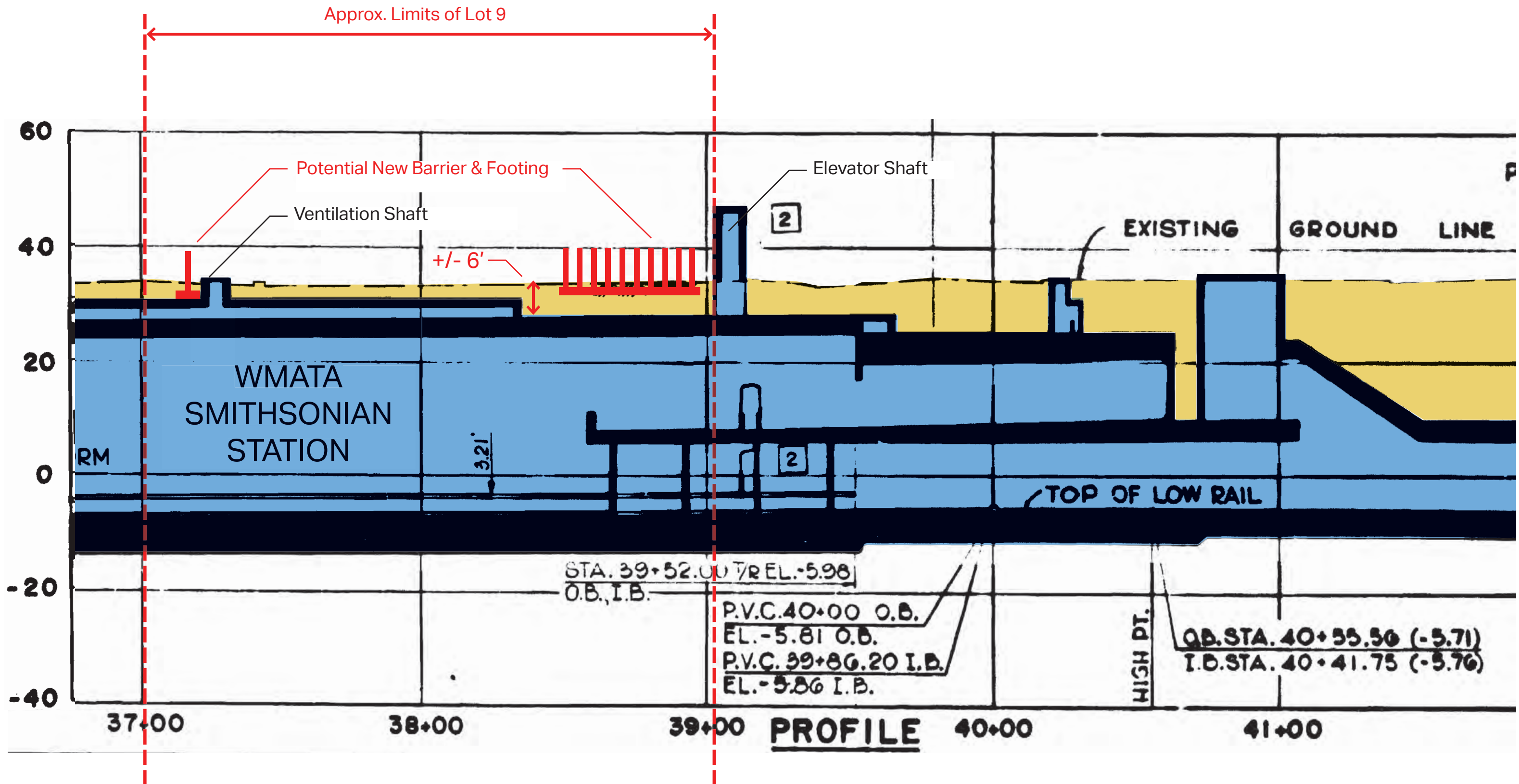


Existing Site Plan - Project Area (Lot 9) Enlargement





WMATA, Smithsonian Metro Station - As-built Drawing



Soil Depth WMATA station extents

Proposed Concept

USDA Jamie L. Whitten Federal Building Security Plans

May 16, 2019



Bollard and Boulder System - National Museum of the American Indian



Seat wall and Planter - National Museum of the American Indian



Architectonic Wall System - National Museum of American History



Porous Planter System - J. Edgar Hoover Building



Bollard and Berm System - Mary E. Switzer Building



Architectonic Fence System - Bureau of Engraving and Printing



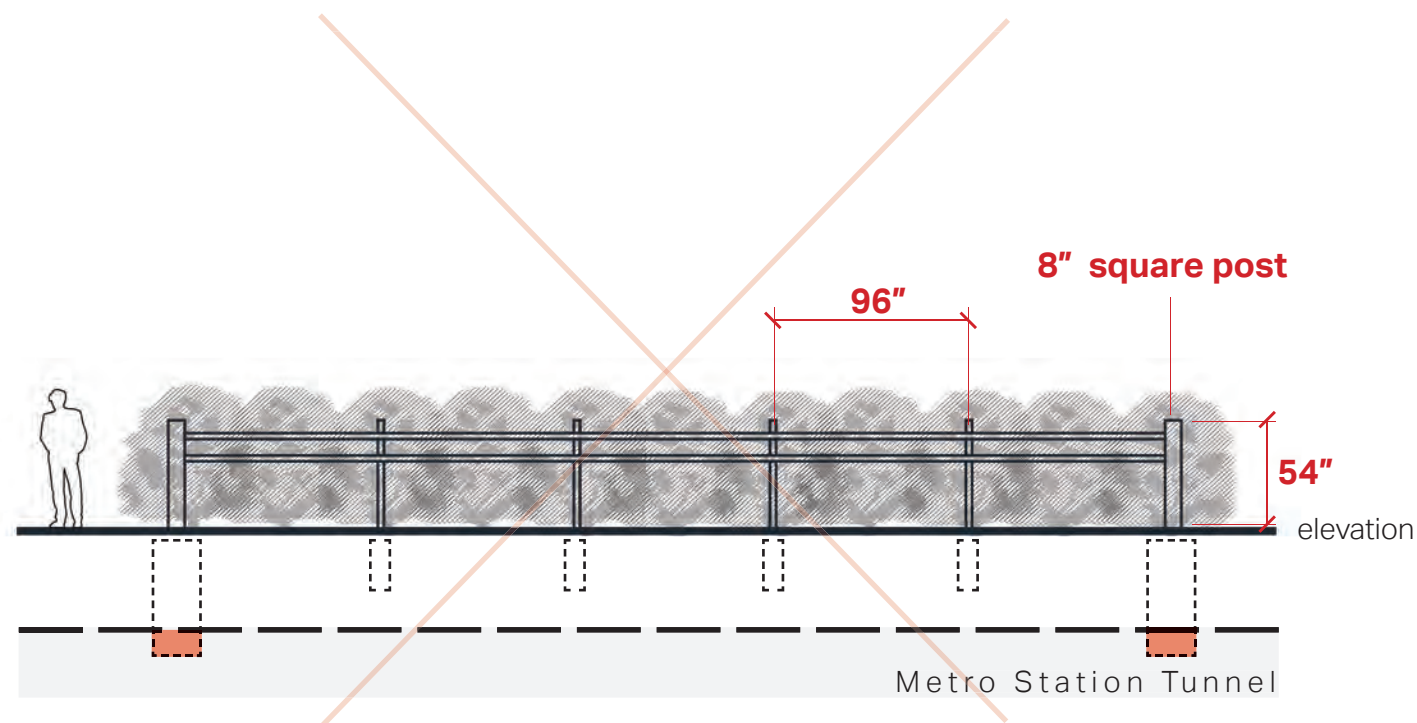
Cable Reinforced Fence System (installation) - National Museum of Natural History



Cable Reinforced Fence System concealed in evergreen hedge (maturity) - National Museum of Natural History

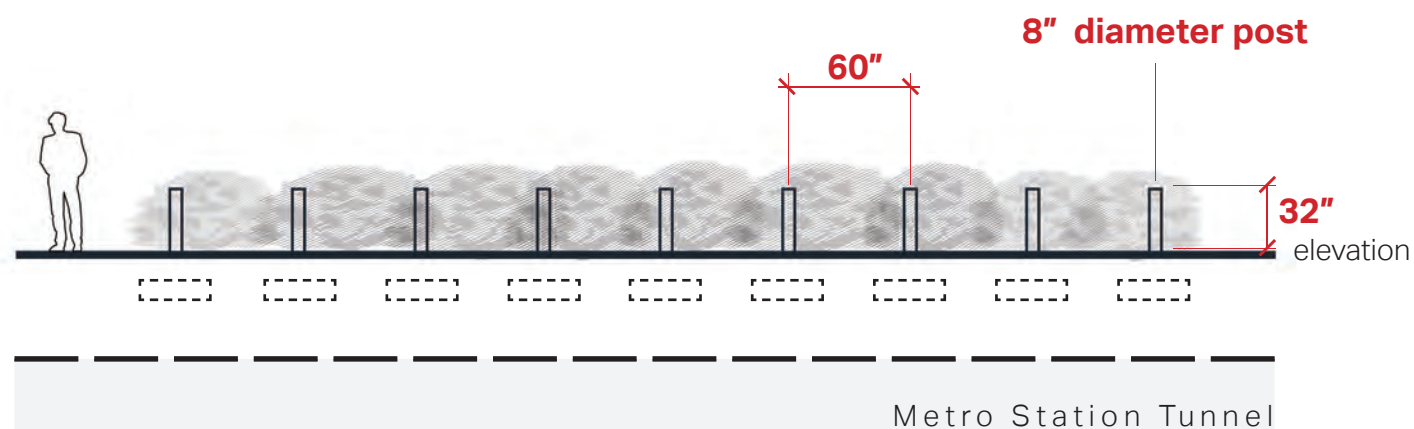
☐ Referenced Typology

Perimeter Security Typologies - Washington DC



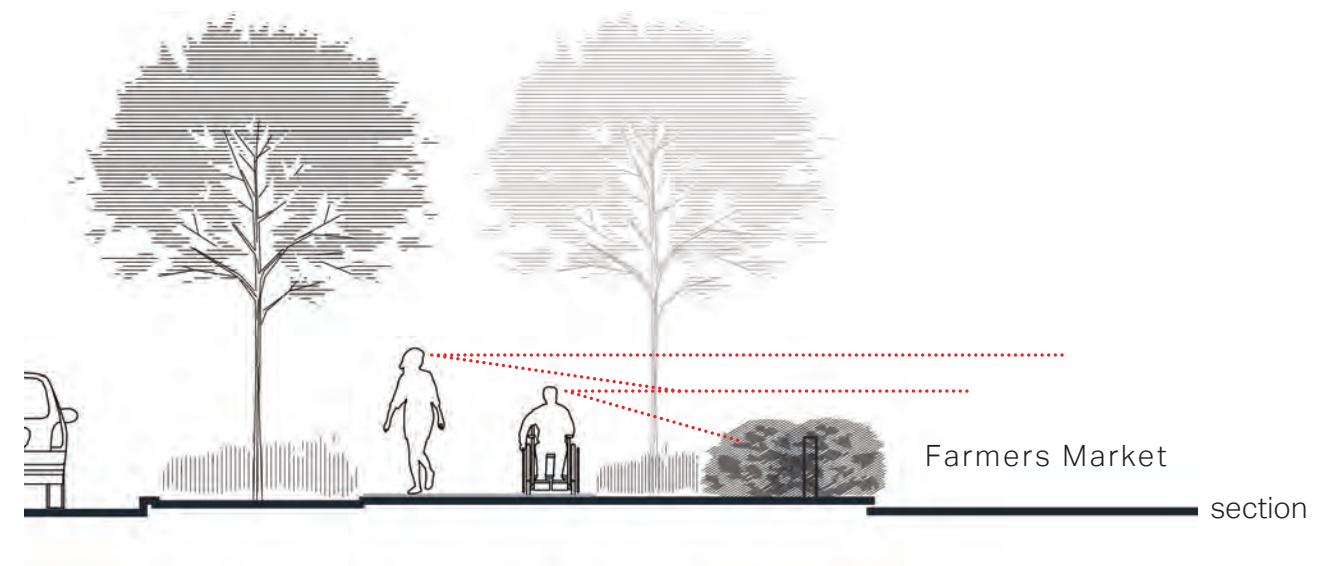
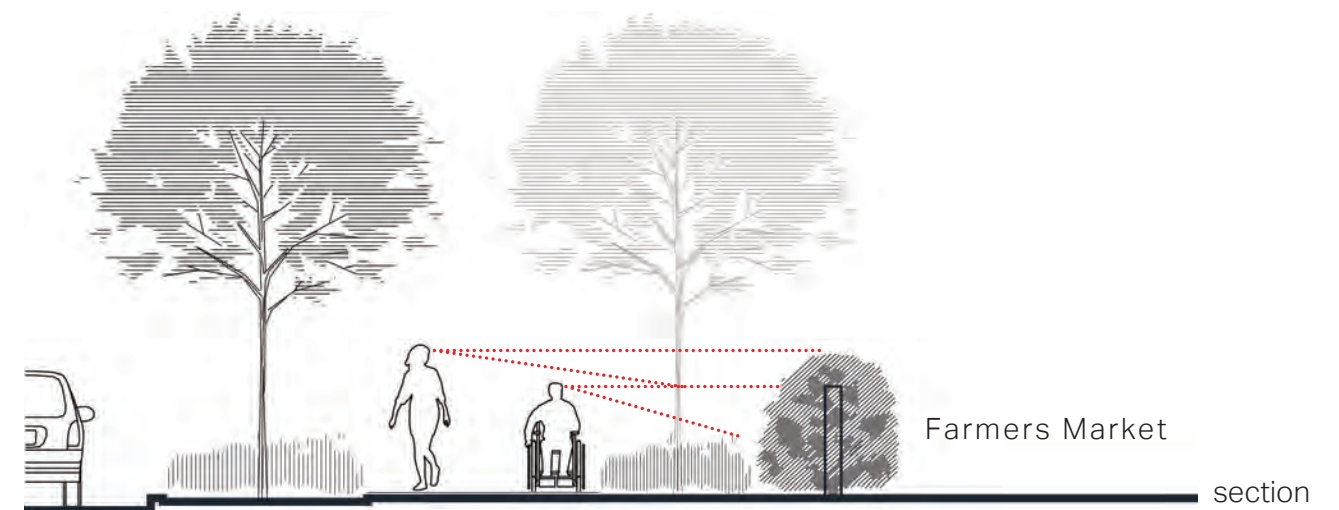
Cable Reinforced Fence System - 8" square post, 54" height, 8'-0" on center

- Requires deep foundations that exceed available depth below grade
- Post height of 54" requires taller shrub to conceal
- Taller shrub of 60" occludes pedestrian visibility
- Less adaptable to future site changes - major portions of system would need replaced



Bollard system - 6-8" diameter post, 32" height, 5'-0" on center

- Supports a shallow foundation
- Post height of 32" is easier to conceal in an evergreen shrub
- Lower shrub of 36" preserves pedestrian visibility across the site
- More adaptable to future site changes, easier emergency egress for pedestrians





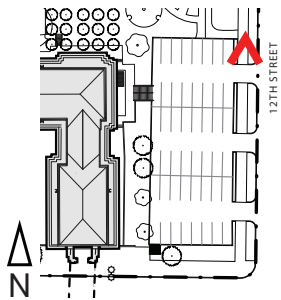
12th Street: Walking South Towards Independence Ave.



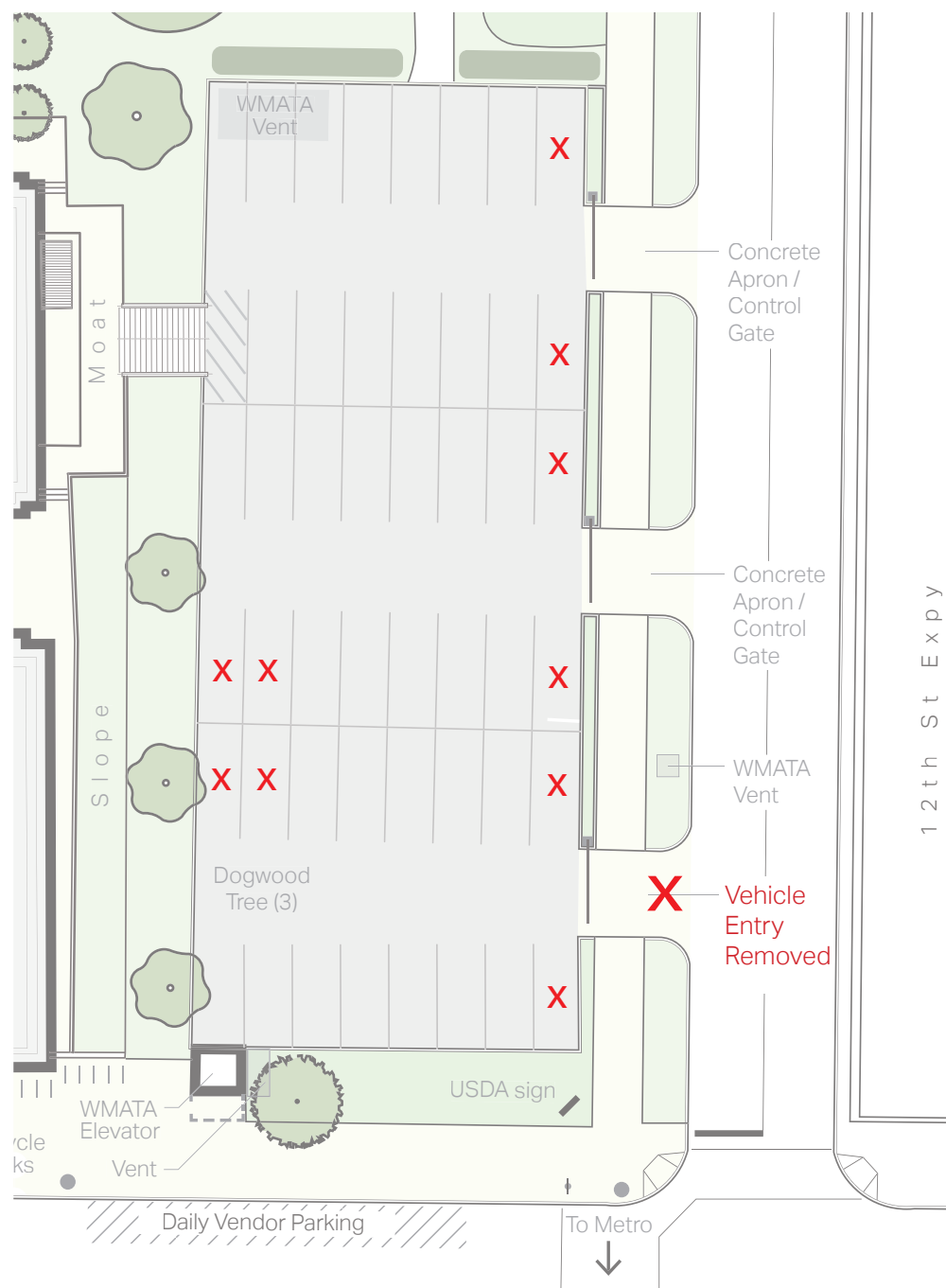
Existing Condition - Temporary perimeter security



Proposed Concept - Security measures concealed in vegetation

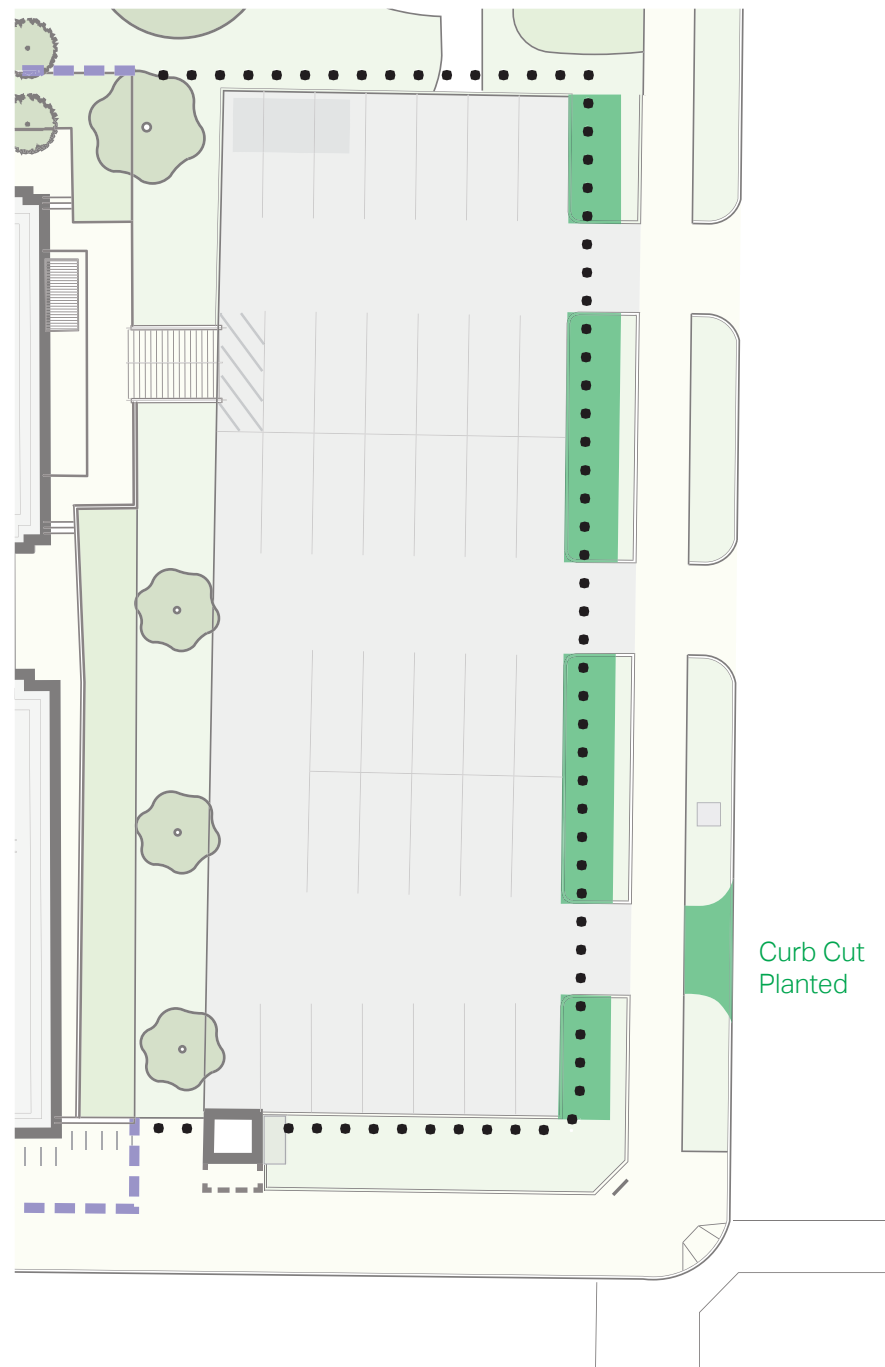


12th Street: Existing and Proposed Comparison



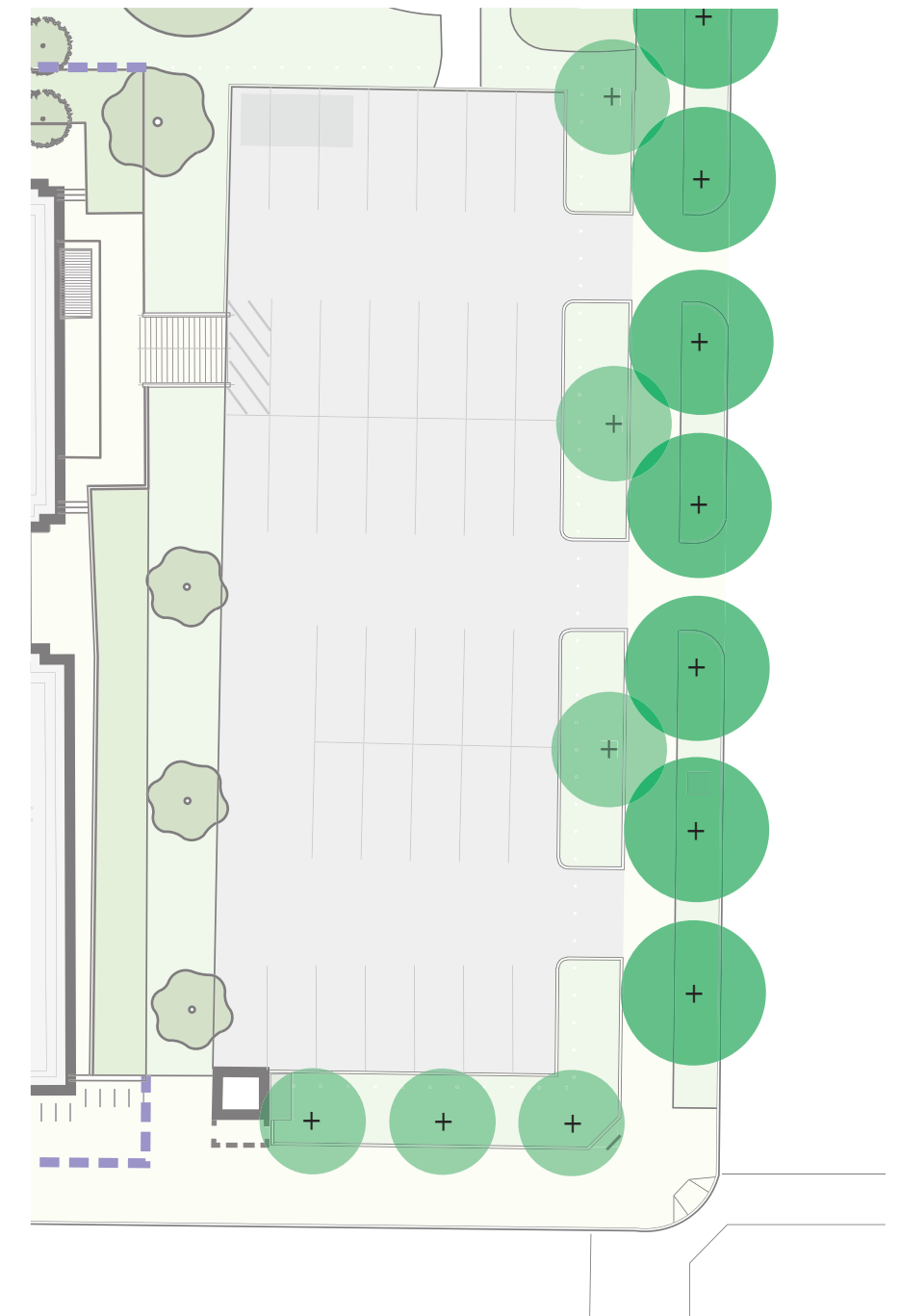
Reduction of Parking

- Removal of ten parking spaces
- Conversion of south vehicular entrance to a pedestrian only access to reduce intersection congestion



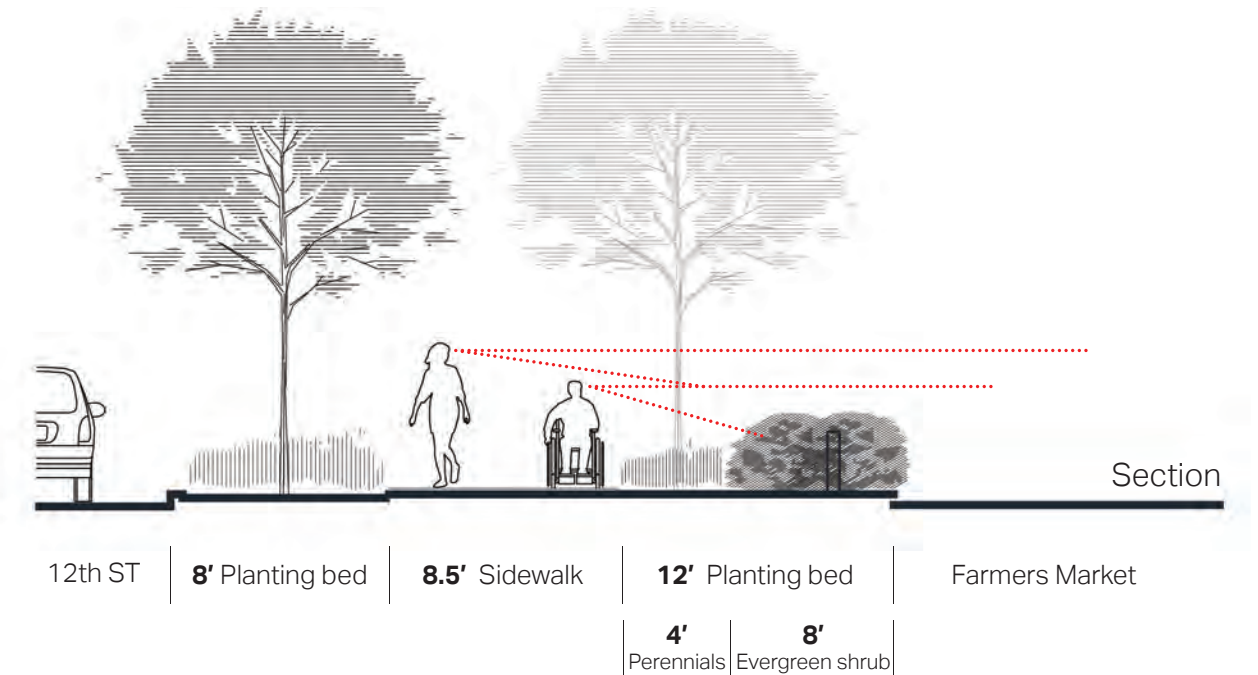
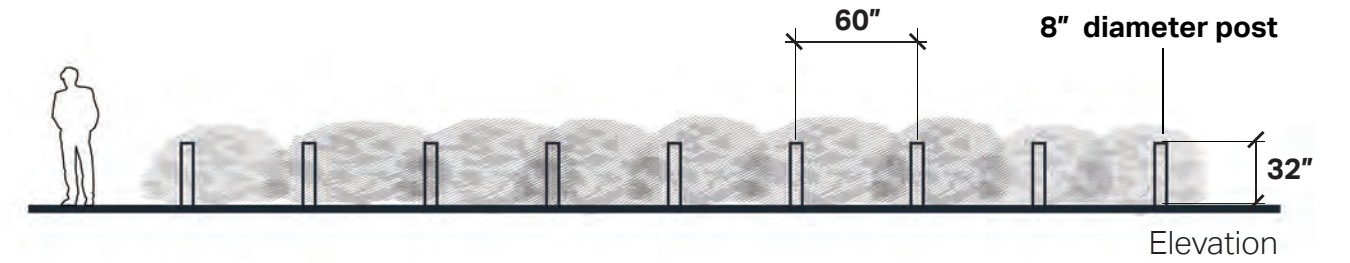
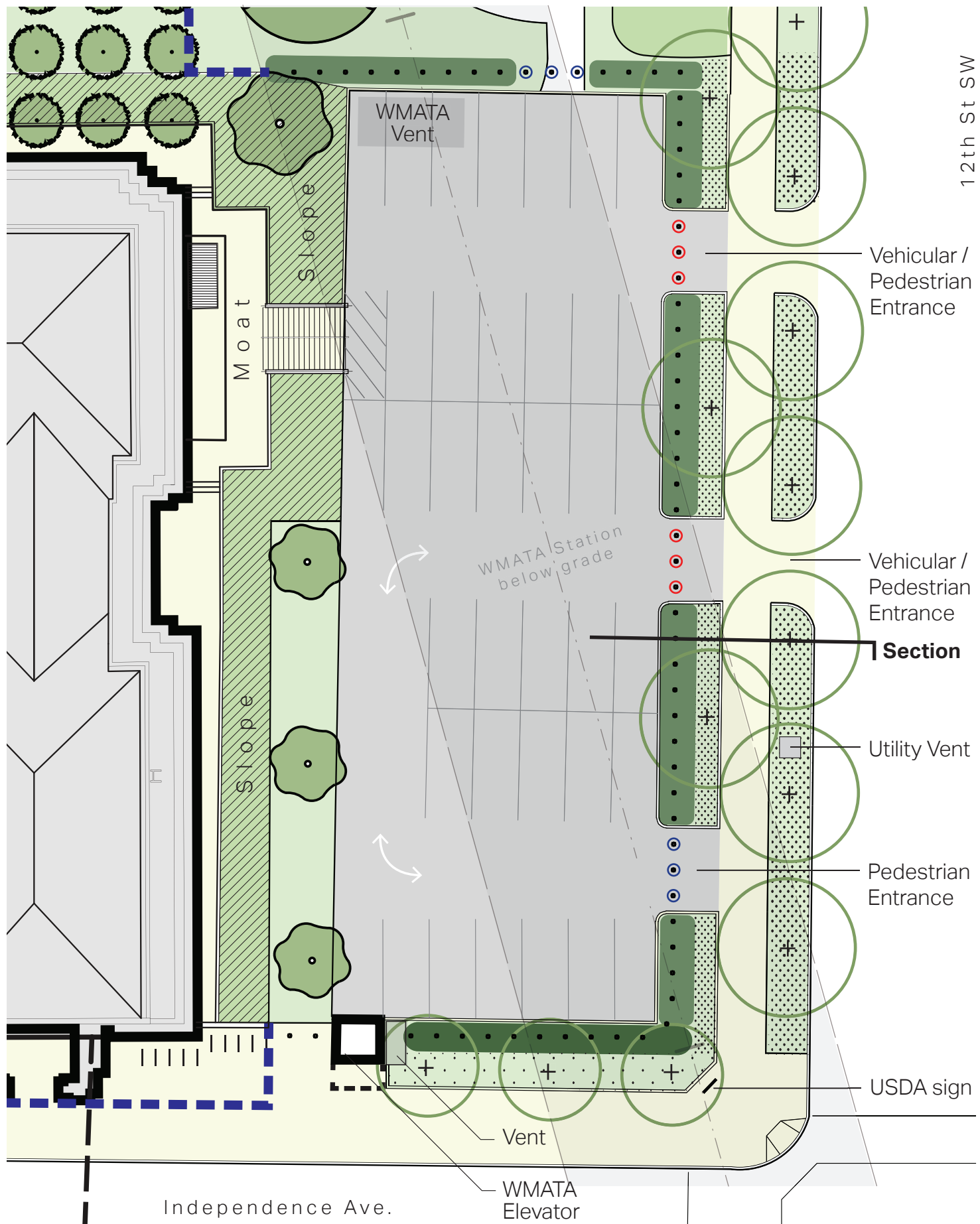
Increase of Planting Area

- Conversion of south vehicular entrance to a pedestrian only access
- Expansion of vegetation beds from 3' to 12' width along 12th street
- Perennial pollinator plantings in all beds including 12th street curbside planters
- Integration of security measures in vegetation bed, set back from the sidewalk



Addition of Tree Canopy

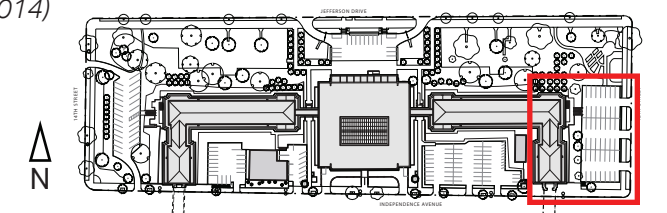
- Restore the Tree Canopy along 12th Street as proposed by Frederick Law Olmsted Landscape Architects in their 1931 USDA planting plan.
- Addition of canopy trees in new beds along 12th Street and Independence Ave. to create additional morning shade on the farmers market and afternoon shade on the sidewalk



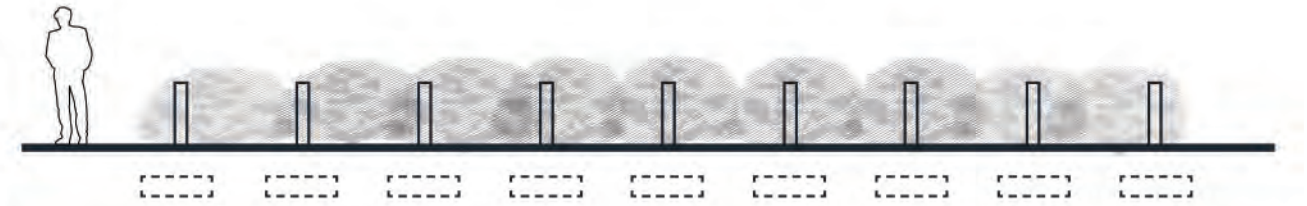
Design strategy:

- Minimal diameter bollard (8"), without sheathing, 5' - 0" on center embedded in robust evergreen hedge.
- Bollard perimeter set back 9' from edge of sidewalk to accommodate a 12' wide bed of canopy trees and robust pollinator plantings.
- Canopy tree establishment in continuous planters along 12th Street curb with robust pollinator plantings.

- • • Proposed Perimeter Security (8" diameter bollards without sheathing)
- • • Operable Bollards (vehicular/pedestrian entrance)
- • • Stationary Bollards (pedestrian entrance)
- • • Future Perimeter Security Line (Approved 2014)
- • • Groundcover Planting
- • • Evergreen Hedge
- • • Canopy Tree



Unsheathed bollards concealed in an evergreen hedge



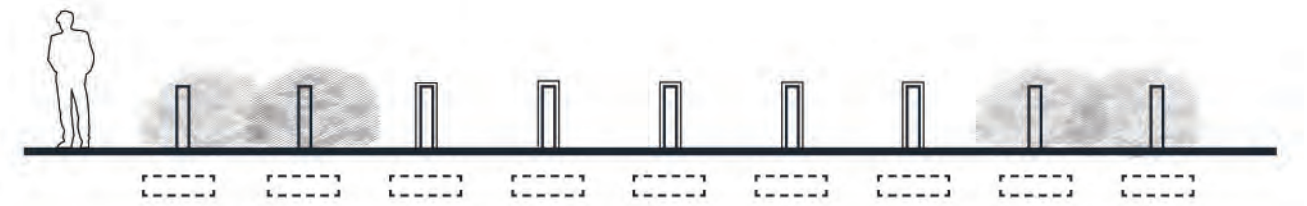
Future porosity is possible by selectively removing shrubs and adding bollard sheathing



Future sheathing can be reenvisioned



Future porosity



Potential for removable bollards for added special event flexibility





12th Street: Walking South Towards Independence Ave.



12th Street: Walking South Towards Independence Ave. (*revealing concealed security measures*)



Independence Avenue: Northwest Perspective



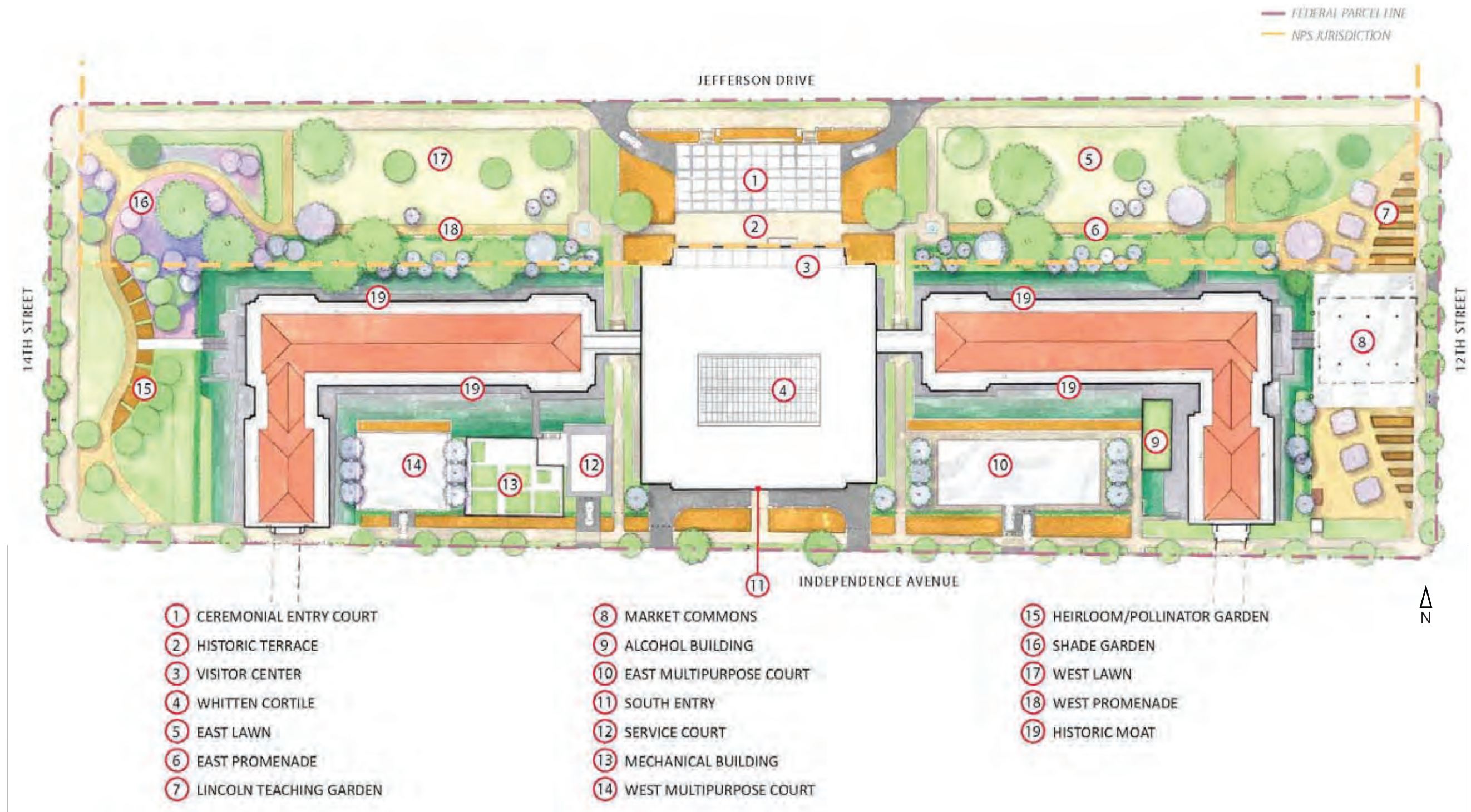
Independence Avenue: Northwest perspective - *(revealing concealed security measures)*

APPENDIX

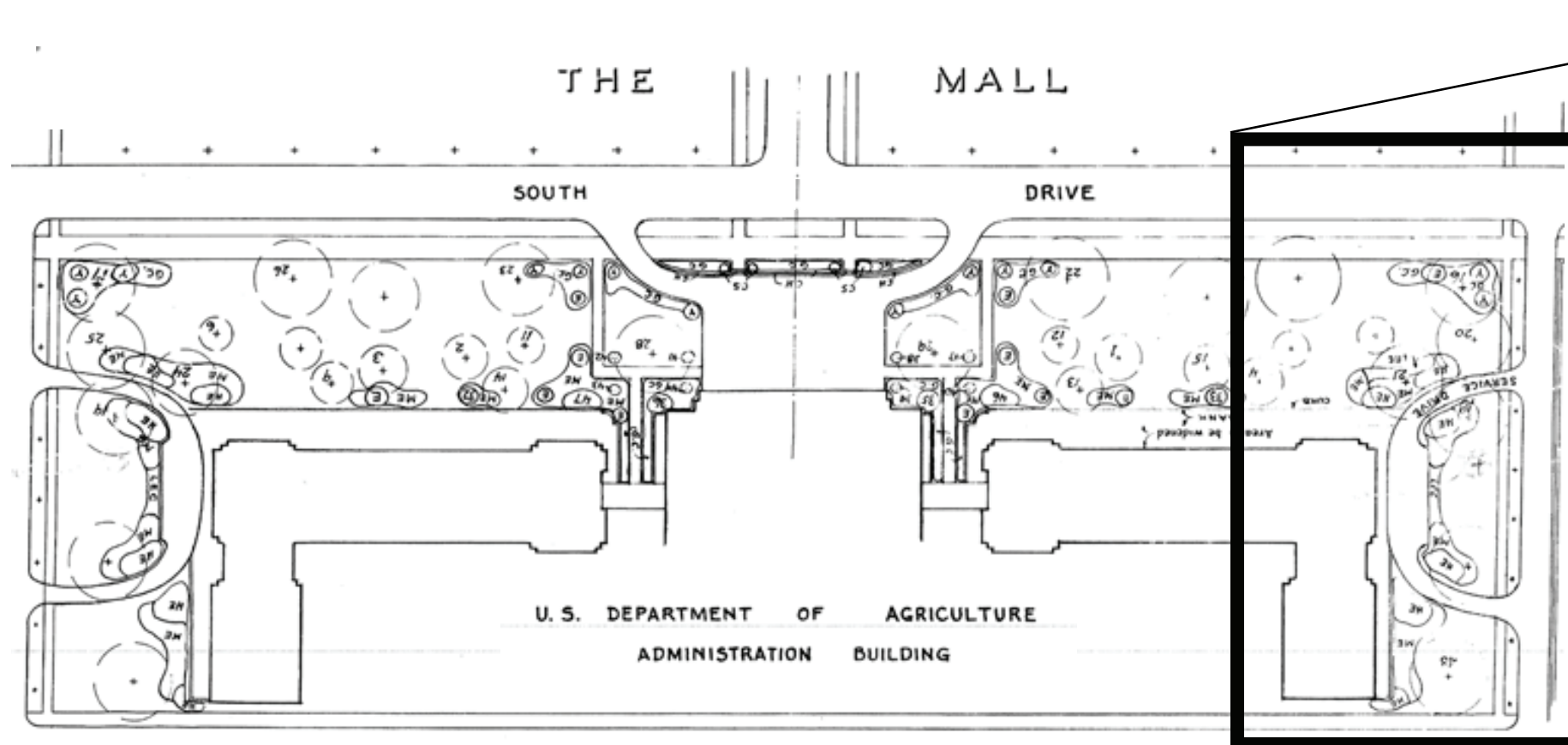
Agency Consultation

USDA Jamie L. Whitten Federal Building Security Plans

May 2, 2019



People's Garden Site Improvements and Perimeter Security
USDA - (OLBN, Inc) Approved June 5, 2014



Olmsted Archives, Olmsted National Historic Site, Project #02844

LEGEND	
(+ 15)	CROSSES SURROUNDED BY CIRCLES IN DASH LINE AND NUMBERED INDICATE DECIDUOUS TREES TO BE TRANSPLANTED THIS SPRING.
(47)	CIRCLES OR BEDS IN HEAVY LINE SURROUNDING A NUMBER INDICATE EVERGREEN SHRUBS TO BE TRANSPLANTED THIS SPRING.
(+)	CROSSES SURROUNDED BY CIRCLES AND NOT NUMBERED ARE LOCATIONS FOR DECIDUOUS TREES FOR PLANTING LATER.
(HE)	OTHER BEDS NOT NUMBERED BUT LETTERED INDICATE LOCATION FOR FUTURE PLANTING AS FOLLOWS:
HE	INDICATES HIGH EVERGREEN (12'-25')
ME	" MEDIUM " (5'-12')
LEC	" LOW EVERGREEN OR DECIDUOUS SHRUBS FOR COLOR (AZALEA, ETC)
GC	" GROUND COVER
Y	" YEW - PROSTRATE FORM
(E)	" SPECIMEN EVERGREEN
CH	" CLIPPED HEDGE
CS	" CLIPPED SPECIMEN
+	" FUTURE TREES : NOT PART OF THIS PLAN

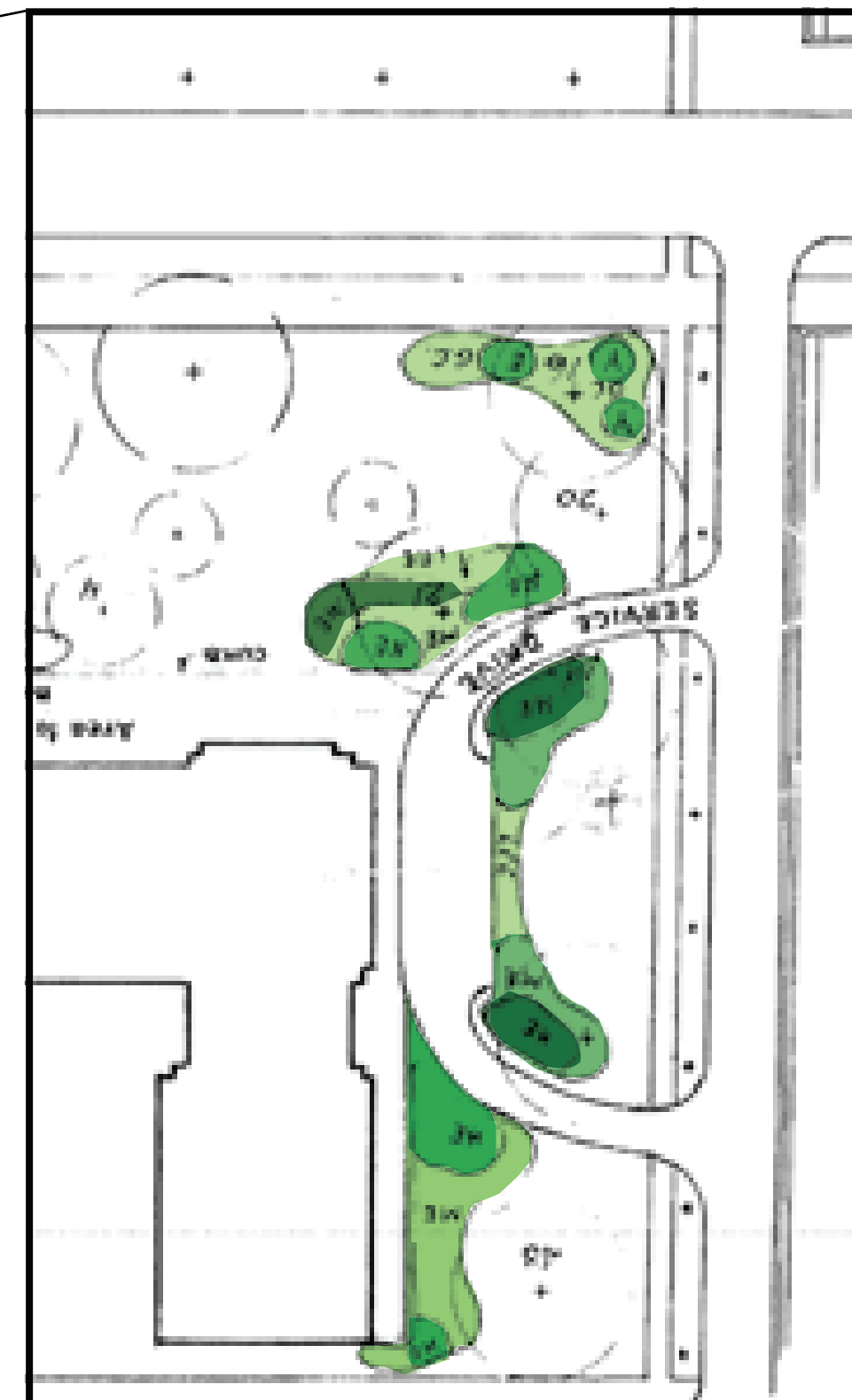
U.S. DEPARTMENT OF AGRICULTURE
WASHINGTON, D.C.

PLANTING PLAN FOR AGRICULTURE BUILDING
PREPARED BY FREDERICK LAW OLNSTED - LANDSCAPE ARCHITECT
MARCH 1931 - FILE NO 2844 - PLAN NO 20

SCALE : 1" = 60'

NATIONAL CAPITAL PARK AND PLANNING COMMISSION

APPROVED: _____
SECRETARY OF AGRICULTURE



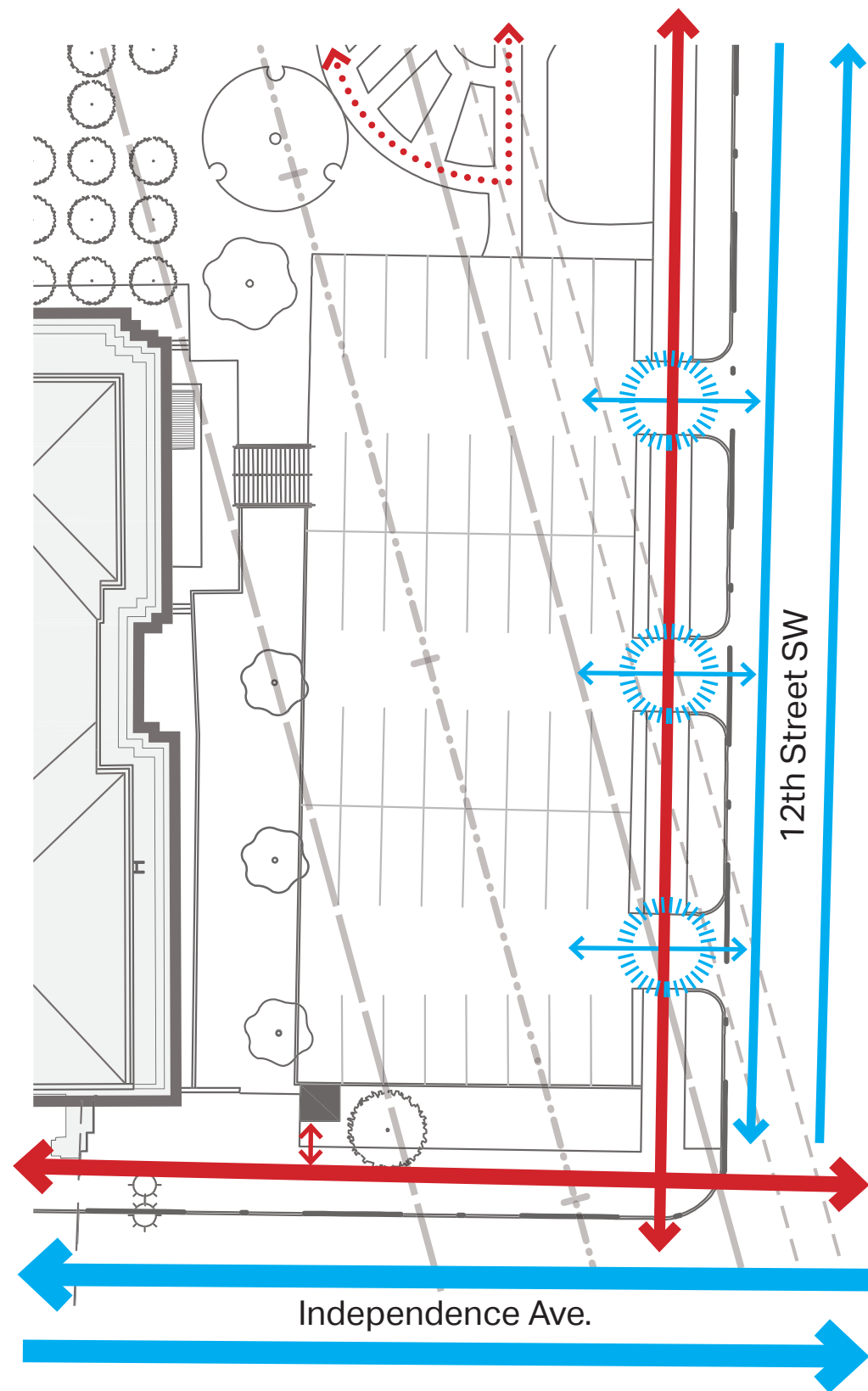
Plan Enlargement

Notes:

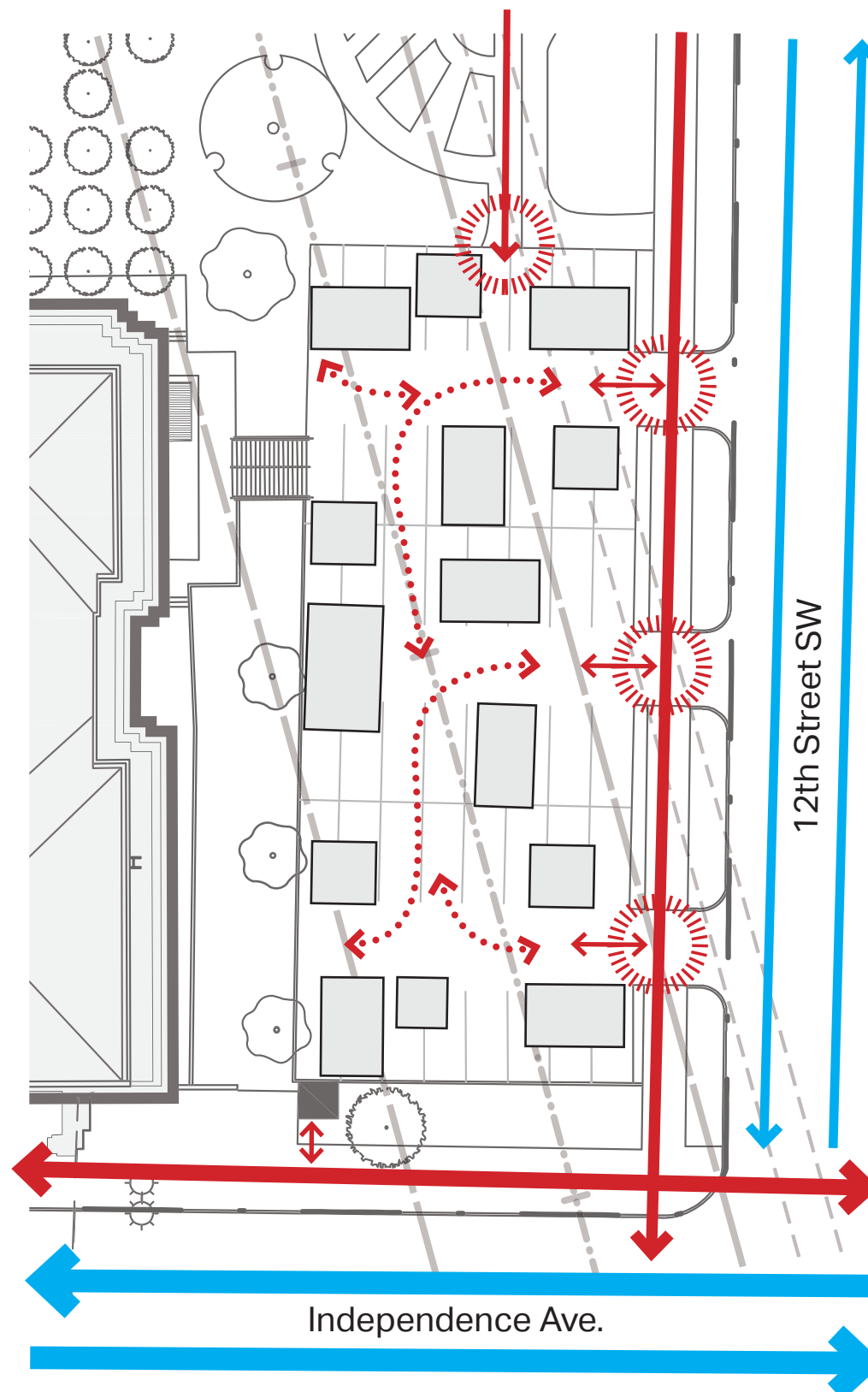
- Grounds defined by vegetation massing
- Service drive and parking screened from mall and Independence Ave. with planting
- 12th Street defined by canopy trees

Planting Plan for Agriculture Building, Prepared by Frederick Law Olmsted, March 1931

Concept Presentation
USDA Whitten Building Security Plans 27

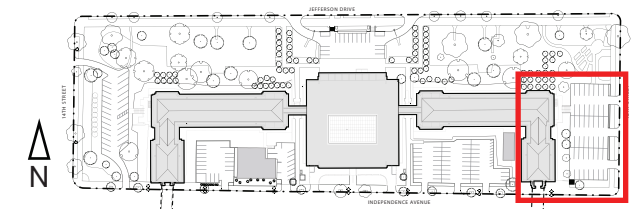


Typical Weekday



Farmer's Market

- Primary Pedestrian Circulation
- - - - - Secondary Pedestrian Circulation
- ⊙ Pedestrian Entry
- Vehicular Circulation
- ⊙ Vehicular Entry





12th Street: Widening of 12th Street Sidewalk from 8.5' to 10'