

# Burrville Elementary School

APRIL 16, 2026 – CONCEPT DESIGN PRESENTATION

CFA CONCEPT SUBMISSION

CFA - 3593

BURRVILLE ELEMENTARY SCHOOL

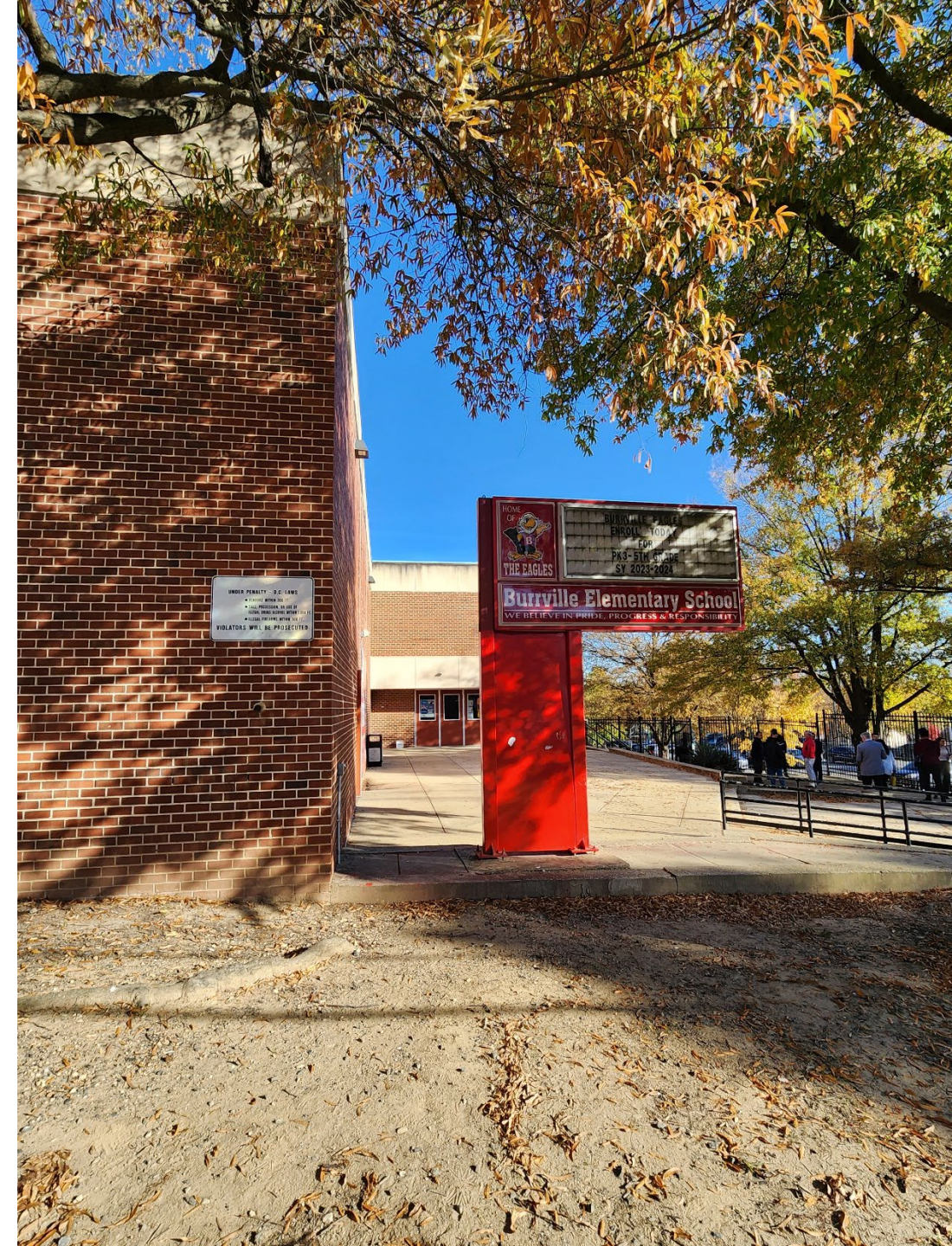
PERKINS EASTMAN DC  
DESIGNING THE DISTRICT

GCS | SIGAL

# AGENDA

---

- Site Context & Existing Building
- New Build Design
  - Precedent Study
  - Exterior Design
  - Plans



# WHAT WE HEARD

- **Traditional Civic Architecture**

Draw from the city's legacy of traditional public school design (late 19th–mid 20th century) and to create architecture that is timeless, civic, and inspiring for students.

- **Material & Detail Refinement**

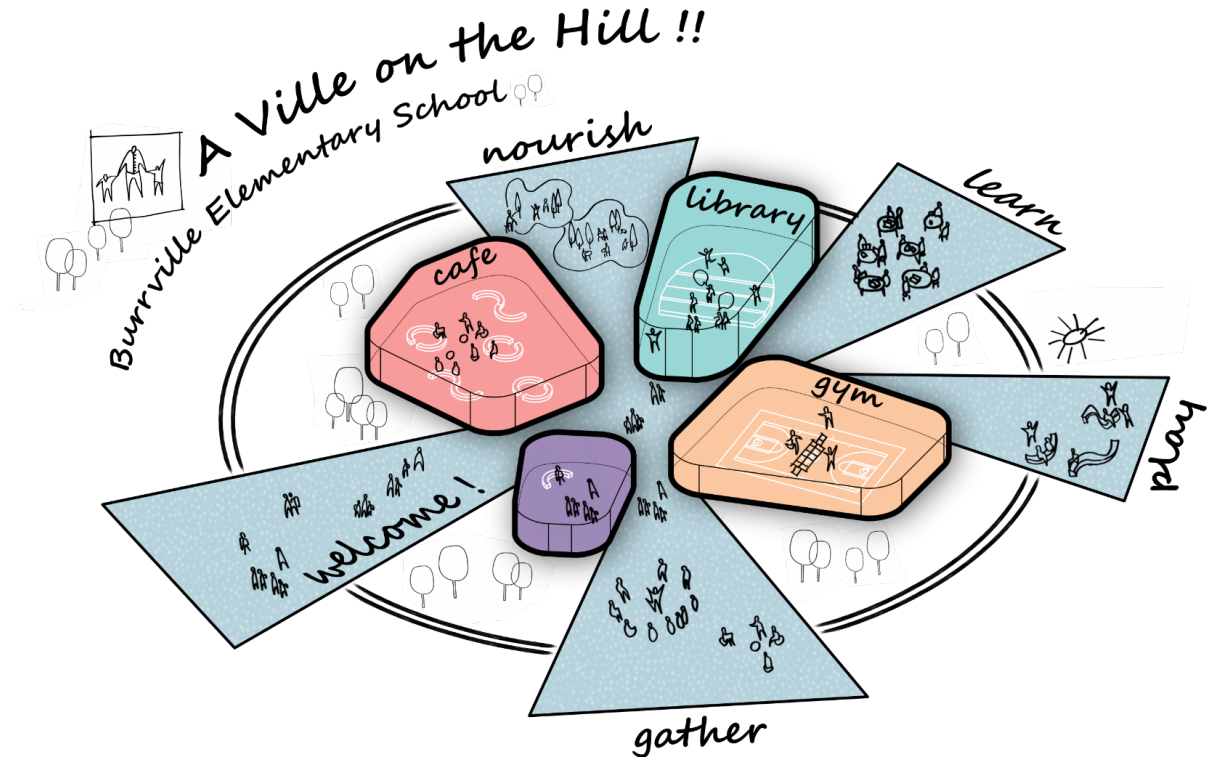
Recommendation to revise the design using a more traditional vocabulary of materials, detailing, and architectural language.

- **Contextual Study**

Deeper study of historic schools and civic buildings in the city to inform a more appropriate and contextually responsive exterior design.

- **Support for Program & Planning**

Support for the building program, site planning, and overall layout, including the building form and generous use of windows.



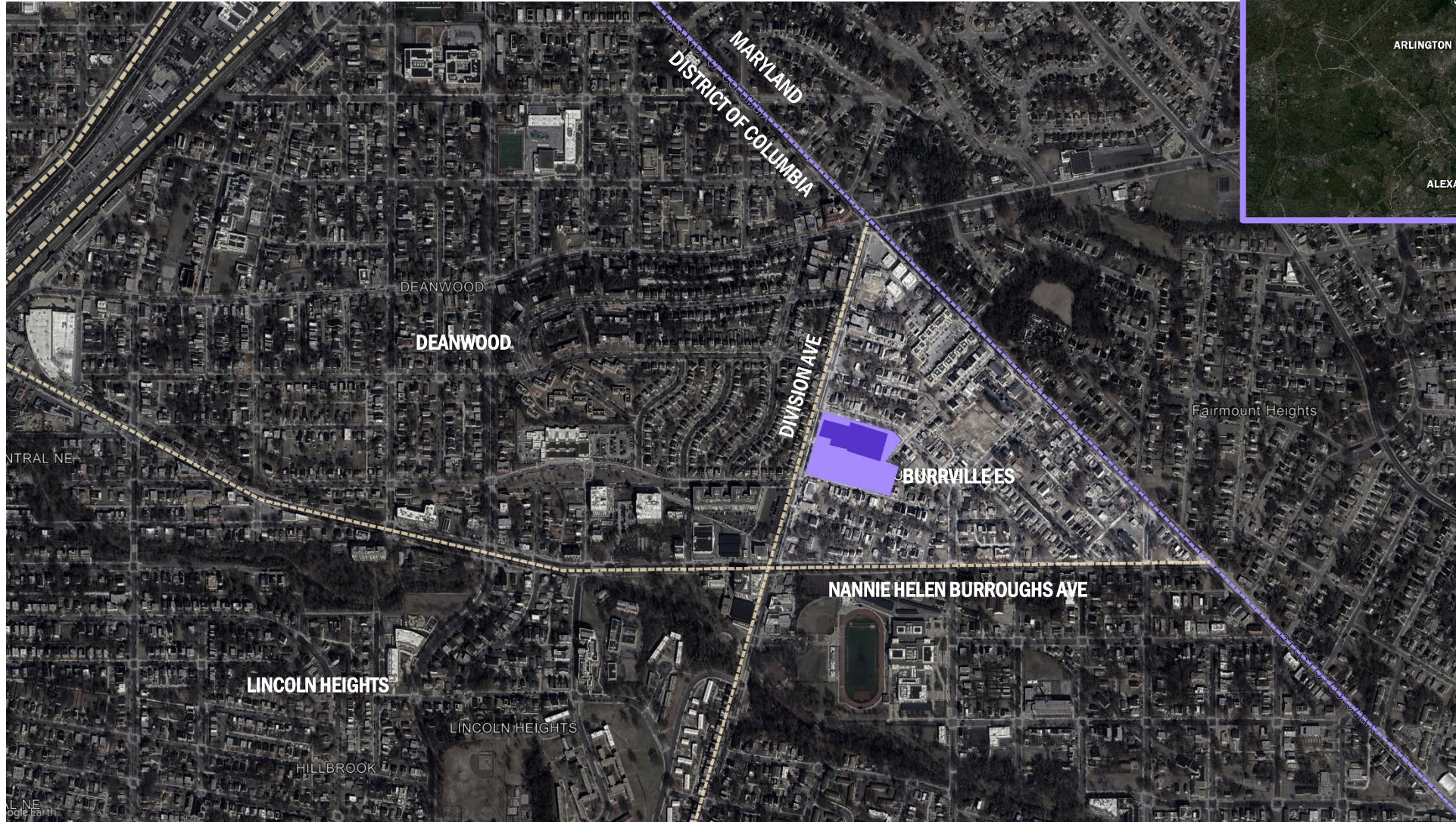


# Project Context

801 DIVISION AVENUE NE

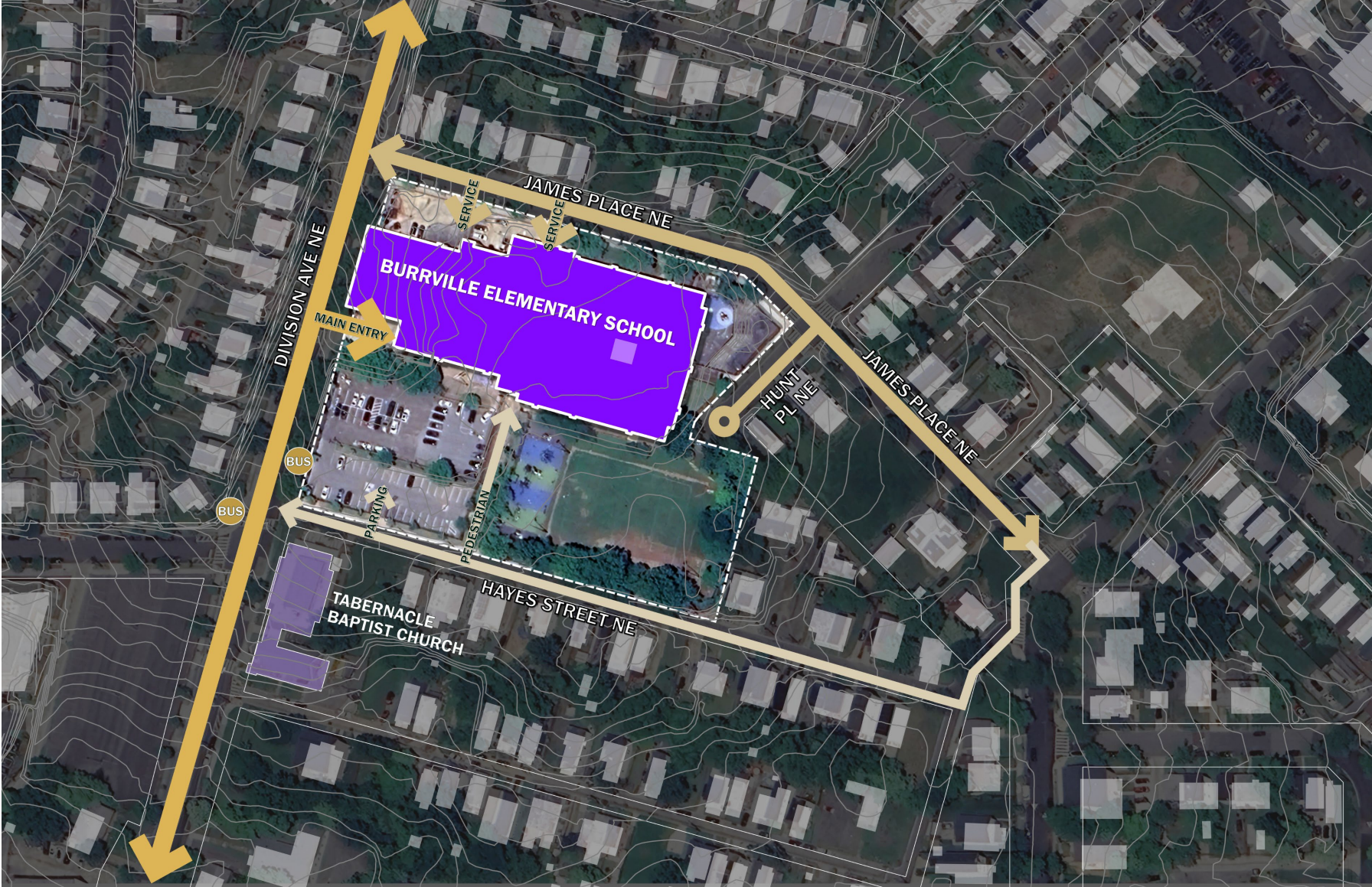
# LOCATION

## SITE CONTEXT



# SITE PLAN

## EXISTING BUILDING



# CONTEXT

## RESIDENTIAL BUILDINGS

DIVISION AVE.



JAMES PL.



HAYES ST.

# CONTEXT

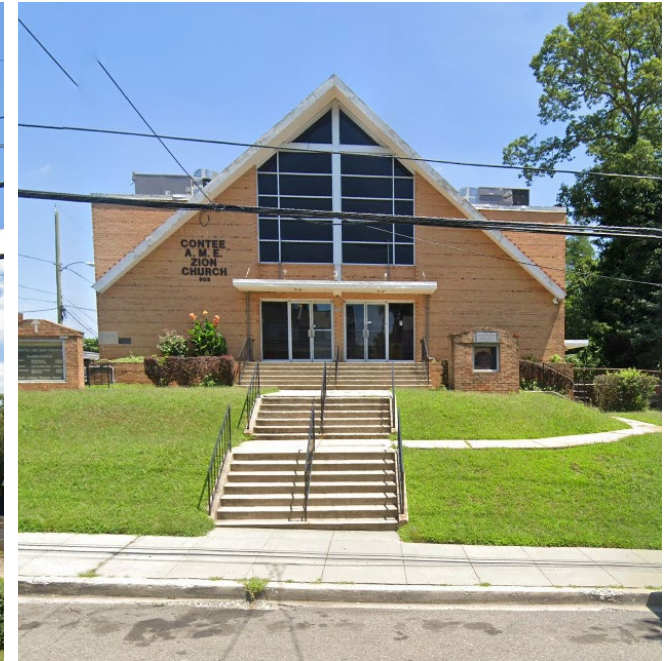
## CIVIC BUILDINGS



STRAND THEATER



TABERNACLE BAPTIST CHURCH



CONTEE ZION CHURCH

# CONTEXT

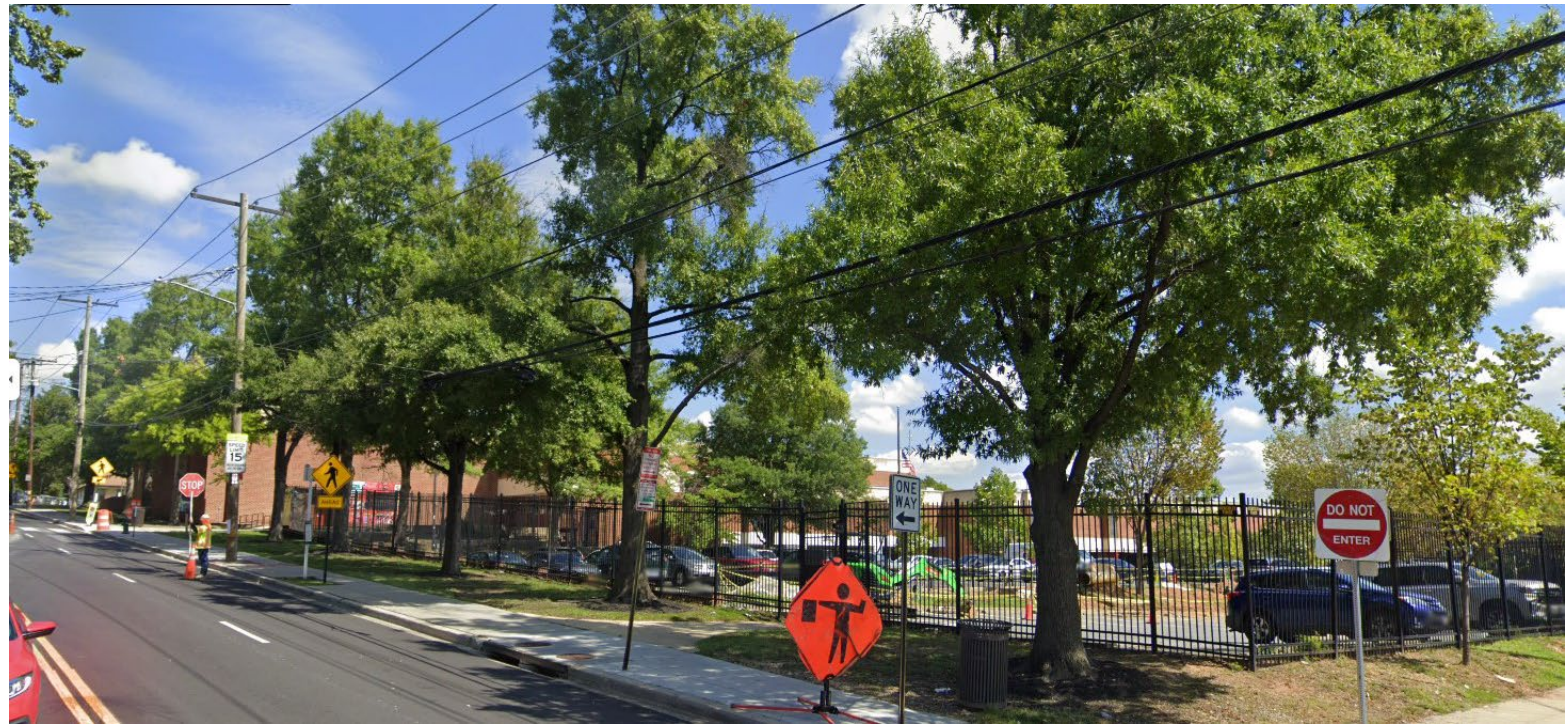
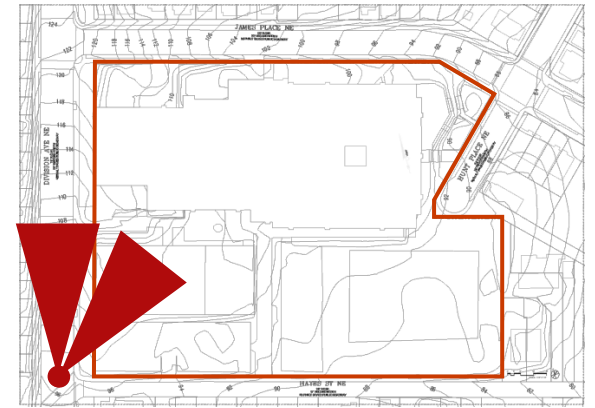
## CIVIC BUILDINGS IN THE BROADER CONTEXT



# SITE CONDITIONS

## DIVISION AVENUE

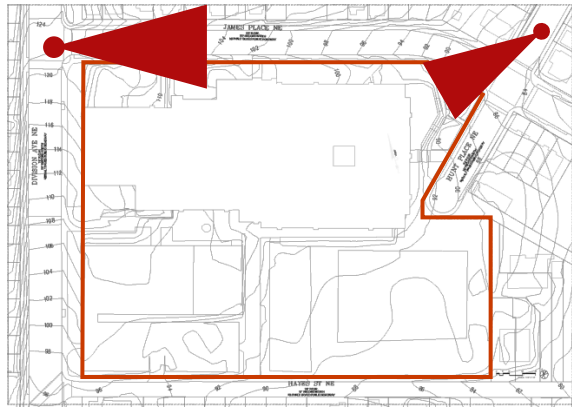
- West edge grade change is 22' over length of 385'.
- Southwest corner at 98' and Northwest corner at 120'.



# SITE CONDITIONS

## JAMES PLACE

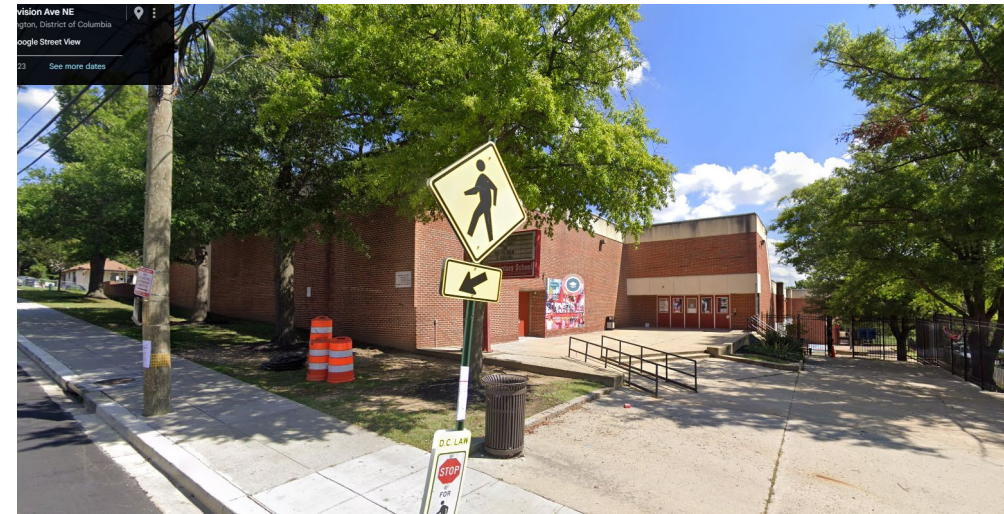
- North edge grade change is 34' over length of 500'.
- Southwest corner at 86' and Northwest corner at 120'.



# EXISTING BUILDING



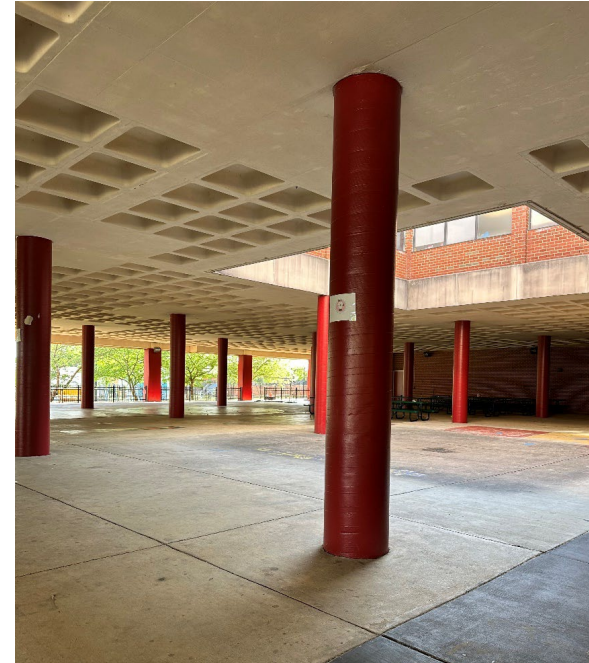
VIEW OF EXISTING GYM FROM DIVISION AVE



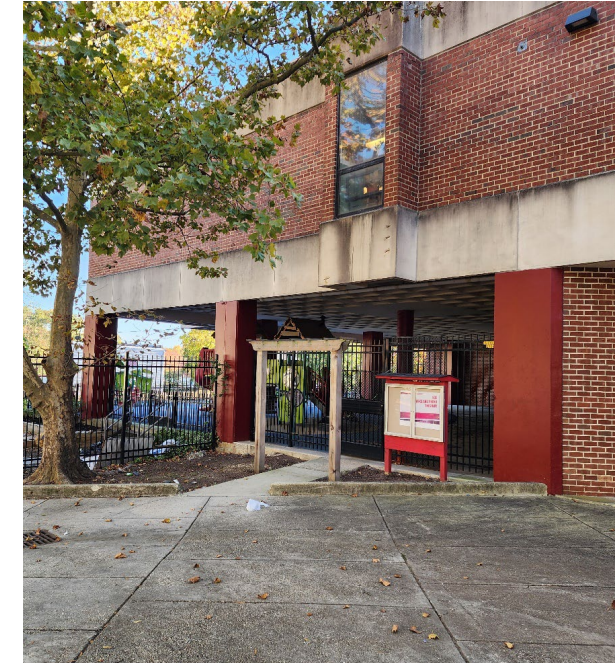
VIEW OF CAFÉ ENTRANCE FROM DIVISION AVE



DIVISION AVE FRONT ENTRY



COVERED PLAY AREA - EAST END, LOOKING SOUTH



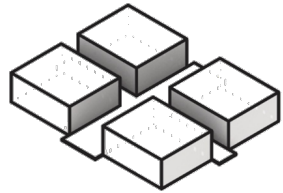
HUNT PLACE EARLY CHILDHOOD ENTRY

# NEW SCHOOL DESIGN

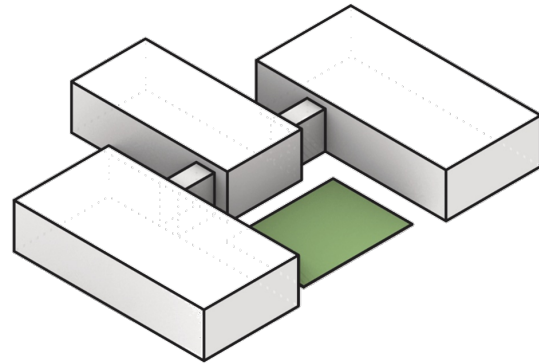


# SOME SCHOOL TYPOLOGIES

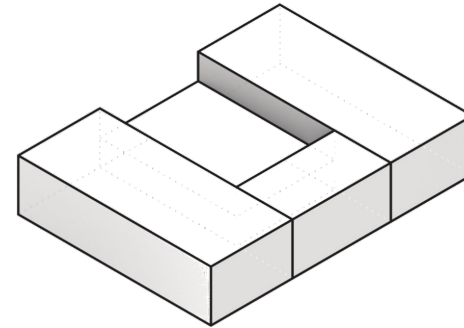
IN THE DISTRICT (LATE NINETEENTH TO MID-TWENTIETH CENTURIES)



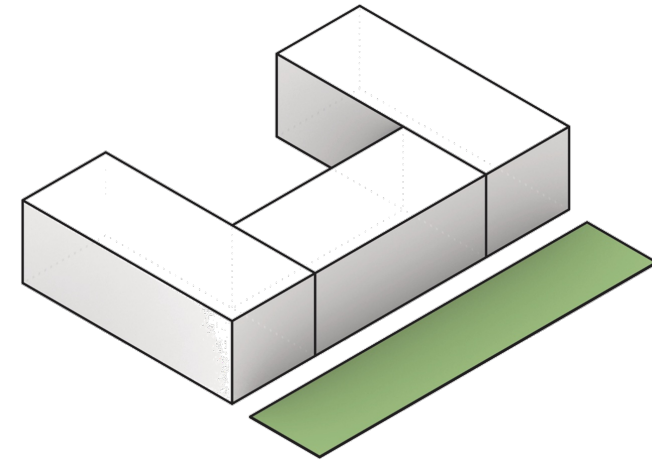
**1** FOUR ROOM SCHOOL



**2** ELEMENTARY SCHOOL



**3** MIDDLE SCHOOL (JUNIOR HIGH)



**4** HIGH SCHOOL

# EXTENSIBLE COURTYARD SCHOOL

IN THE DISTRICT



**STODDERT ELEMENTARY SCHOOL**  
**BUILT IN 1932 & RENOVATED IN 2010**



**CAPITOL HILL MONTESSORI @ LOGAN**  
**BUILT IN 1934 & RENOVATED IN 2011**



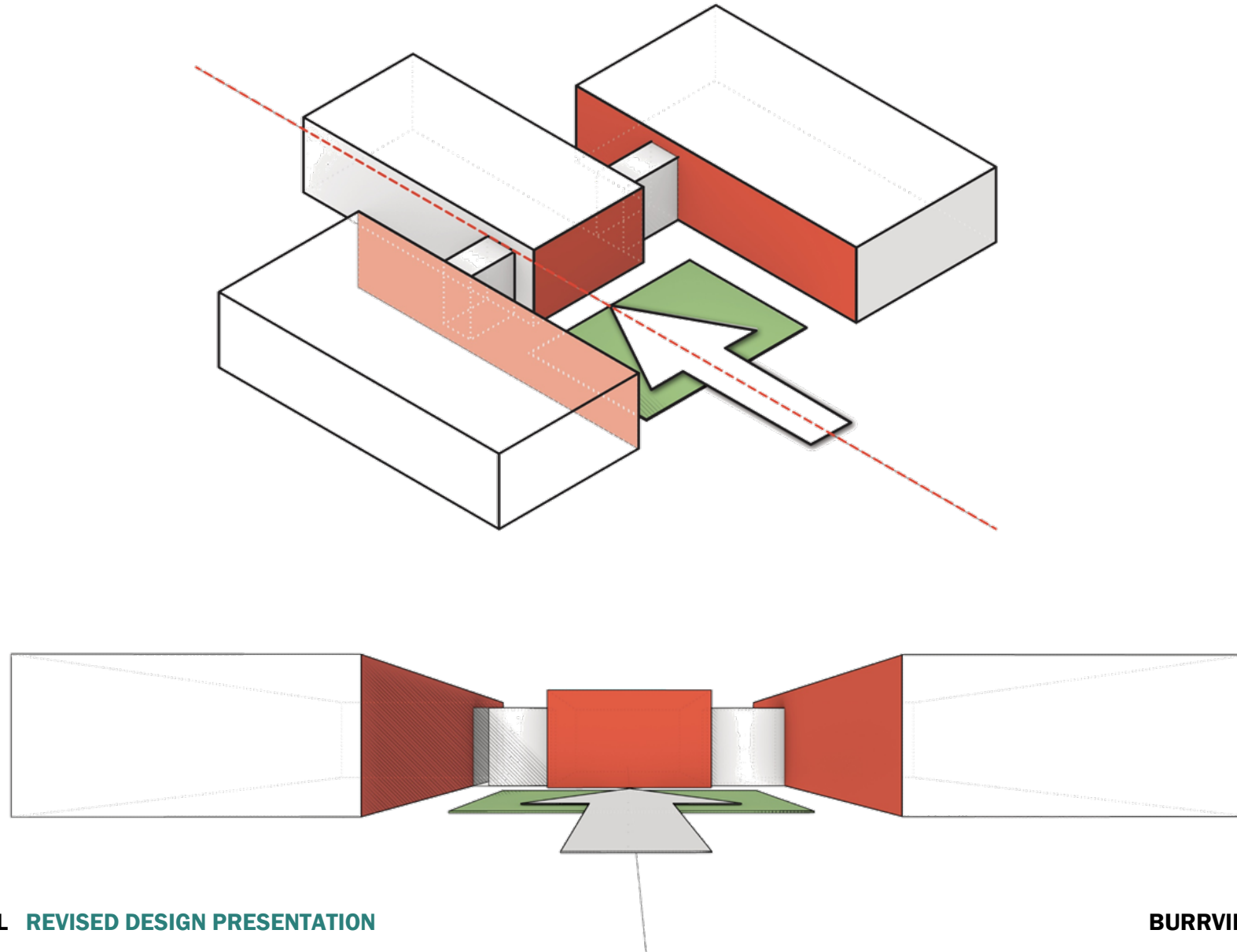
**BUNKER HILL ELEMENTARY SCHOOL**  
**BUILT IN 1940 & CURRENTLY UNDER RENOVATION**



**LAFAYETTE ELEMENTARY SCHOOL**  
**BUILT IN 1928 & RENOVATED IN 2016**

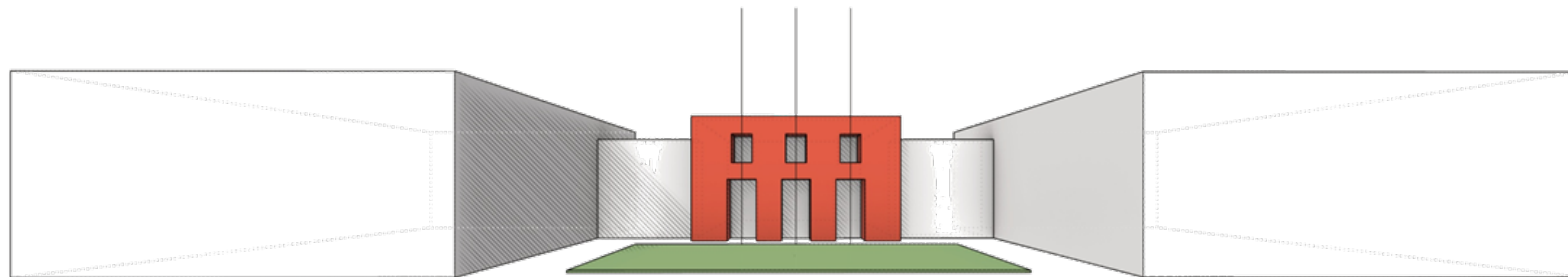
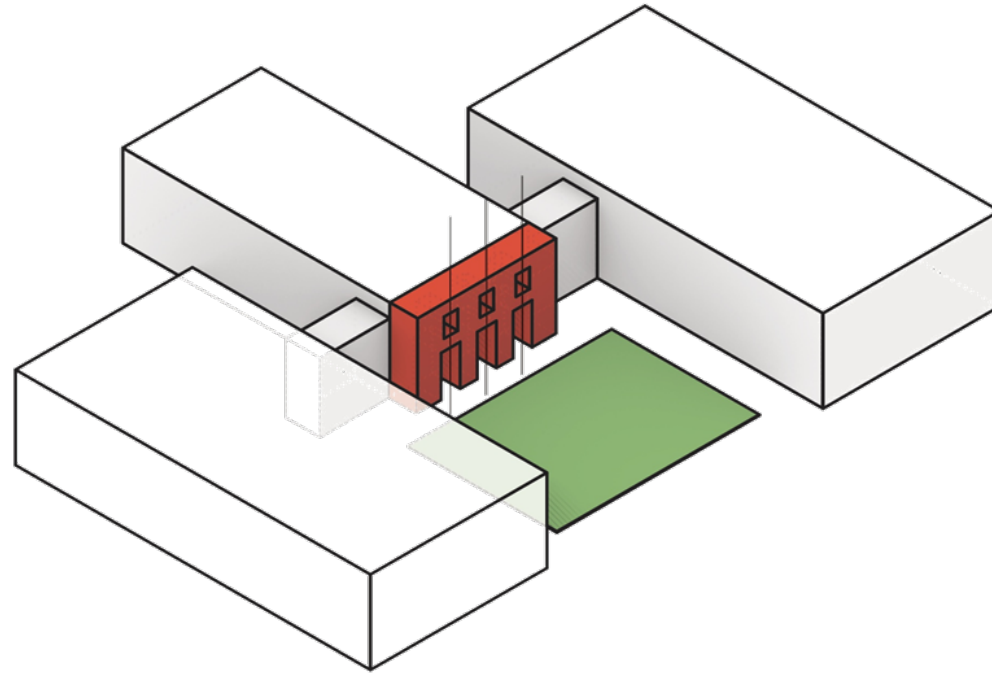
# CIVIC PLAZA & SYMMETRY

ENTRY CONNECTOR & ACADEMIC WINGS



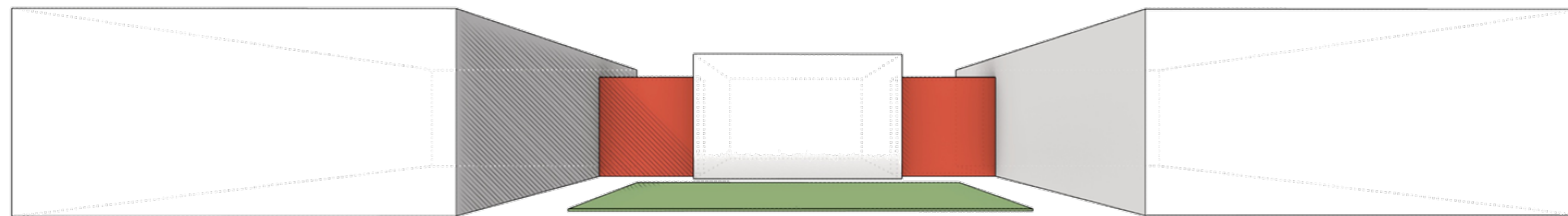
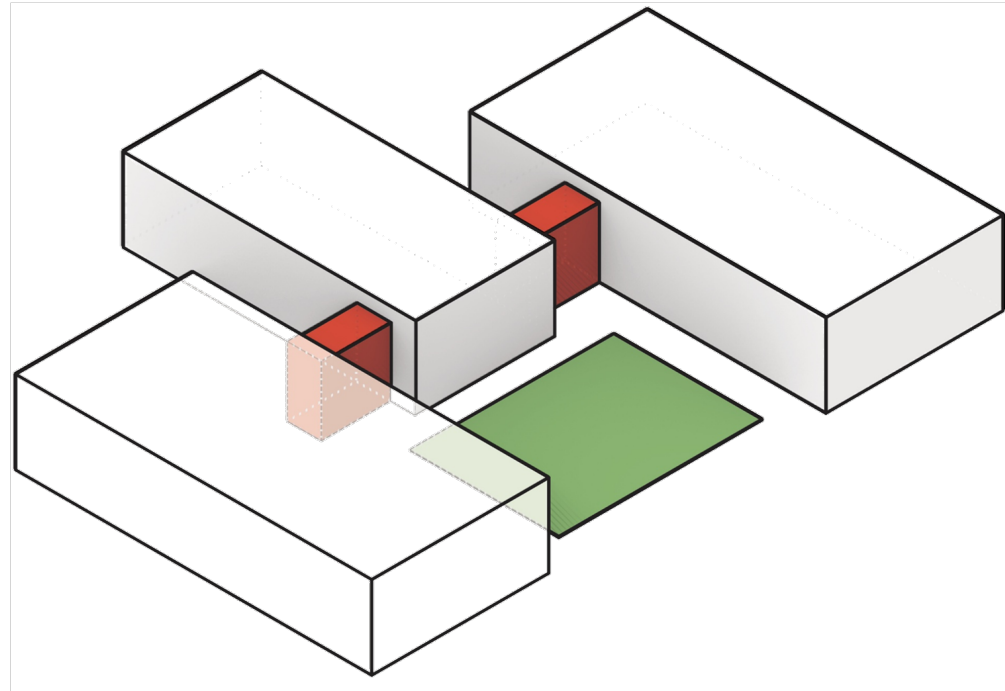
# ENTRANCE LOGGIA

TRIPARTITE OPENINGS



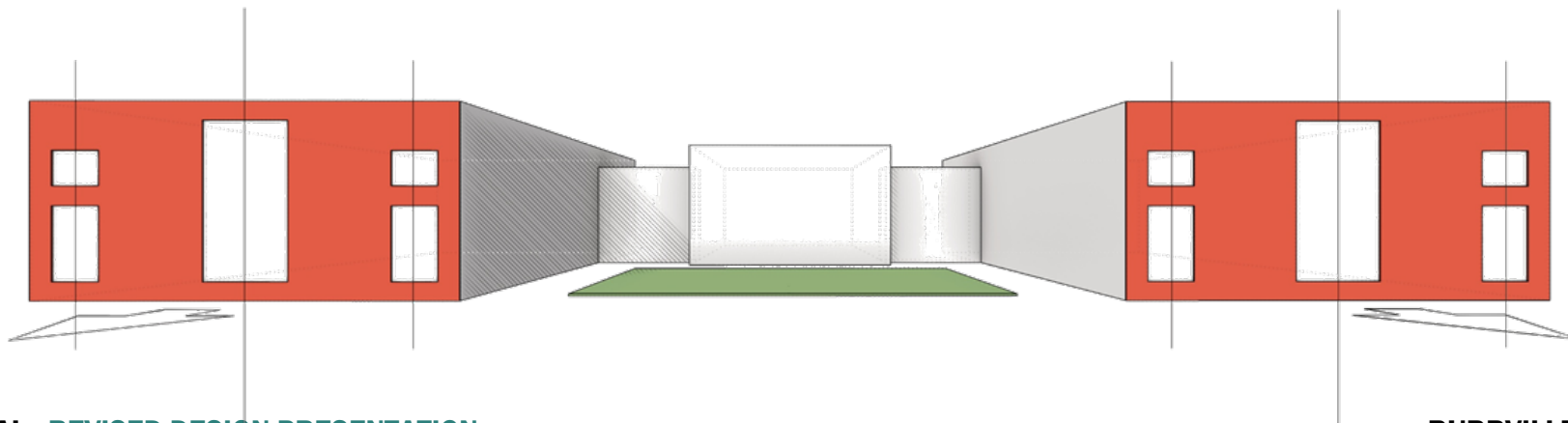
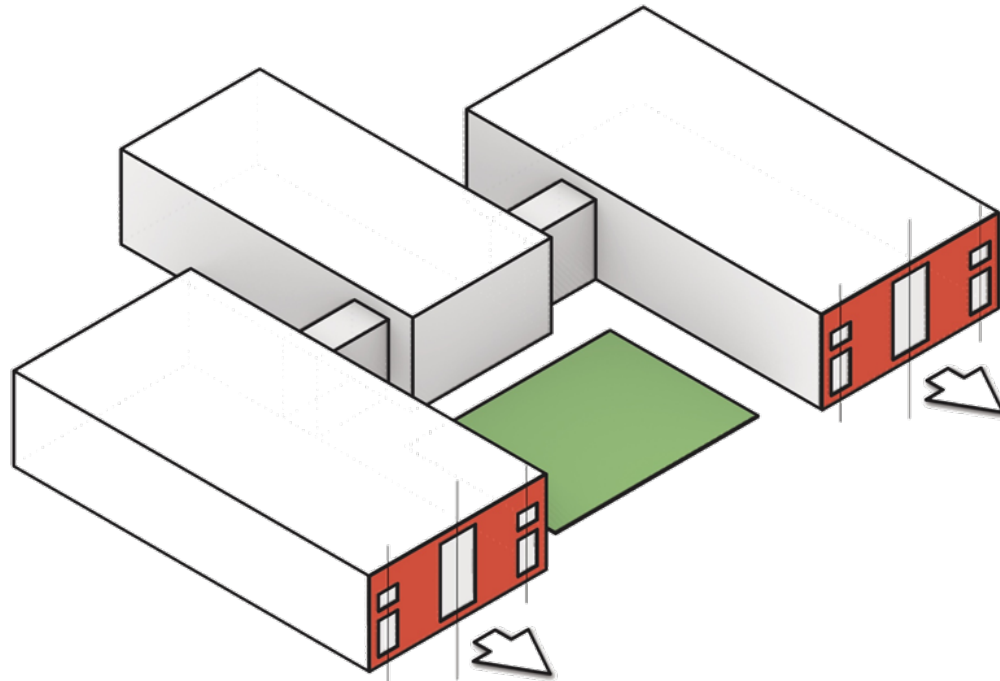
# CONNECTION JOINTS

BRIDGES & REVEALS

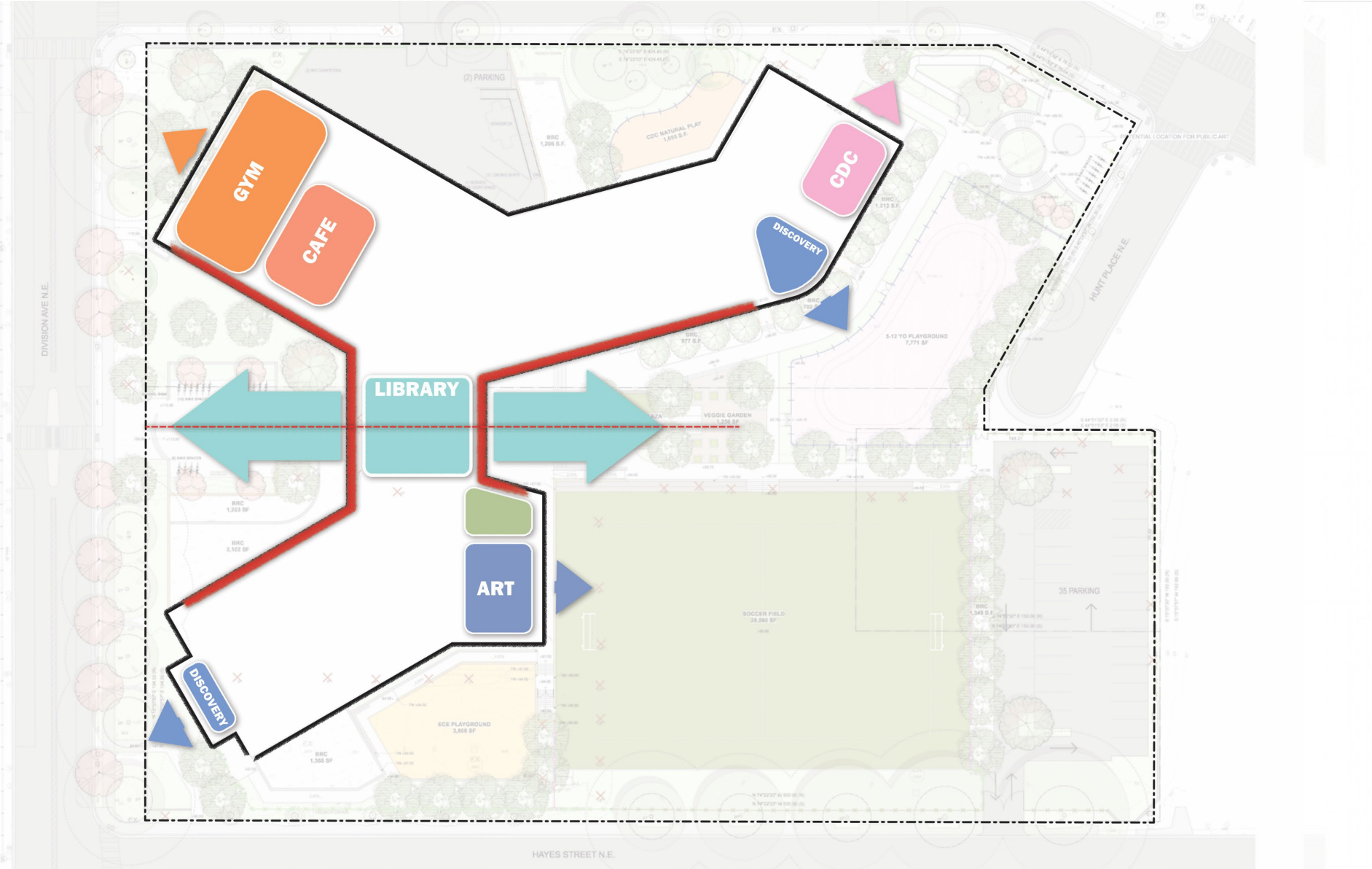


# STREET FACE

END CONDITIONS

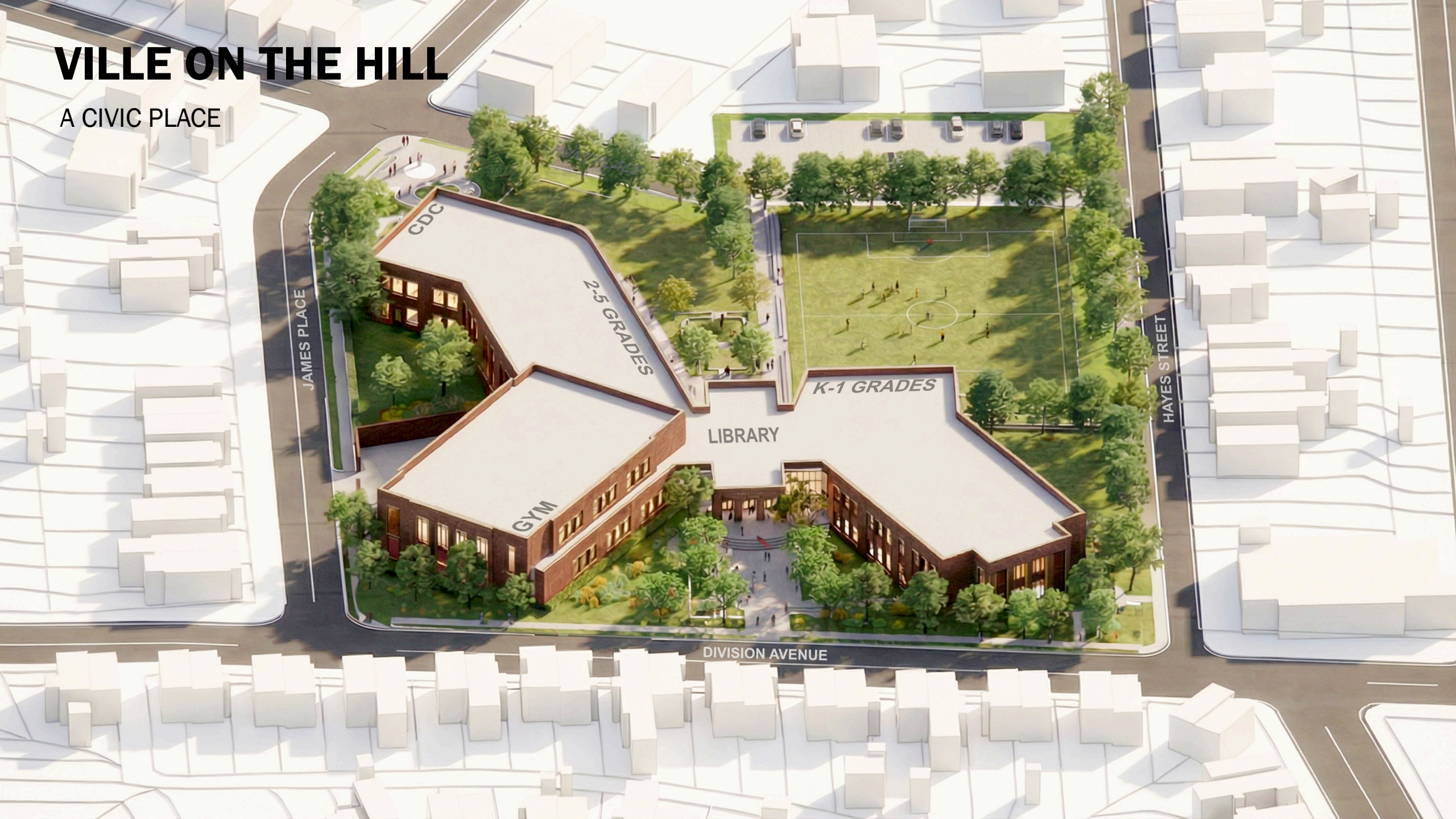


# PLAN ORGANIZATION



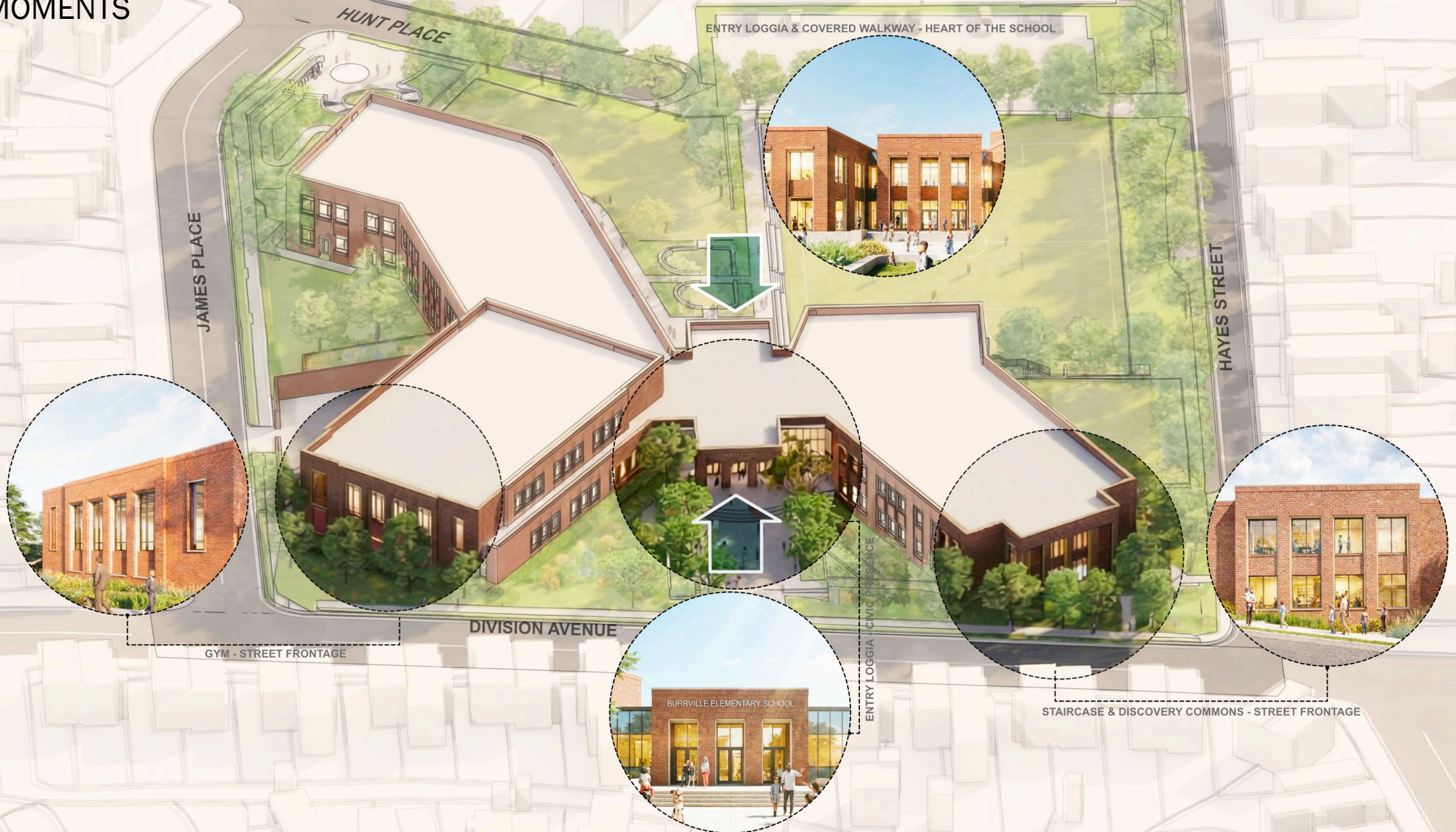
# VILLE ON THE HILL

A CIVIC PLACE

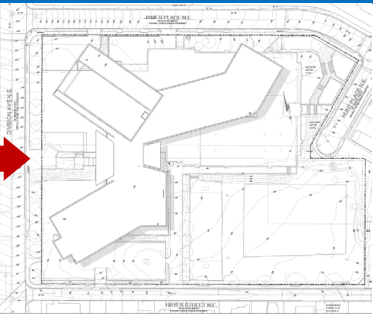


# VILLE ON THE HILL

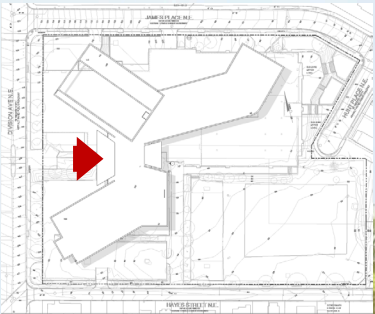
## KEY MOMENTS



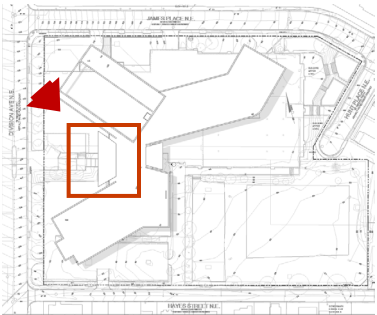
# MAIN ENTRY VIEW – DIVISION AVE.



# MAIN ENTRY VIEW

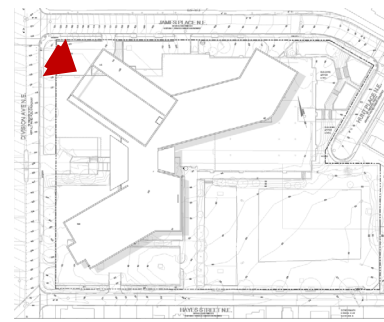


# ENTRY LOGGIA

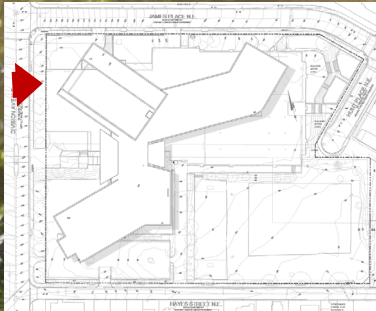


**MAIN ENTRY  
LOGGIA WITH TRIPARTITE  
OPENINGS**

# GYM ELEVATION – DIVISION AVE.

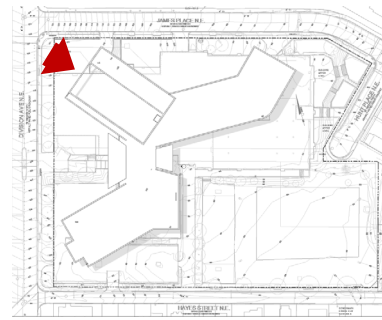


# GYM VIEW

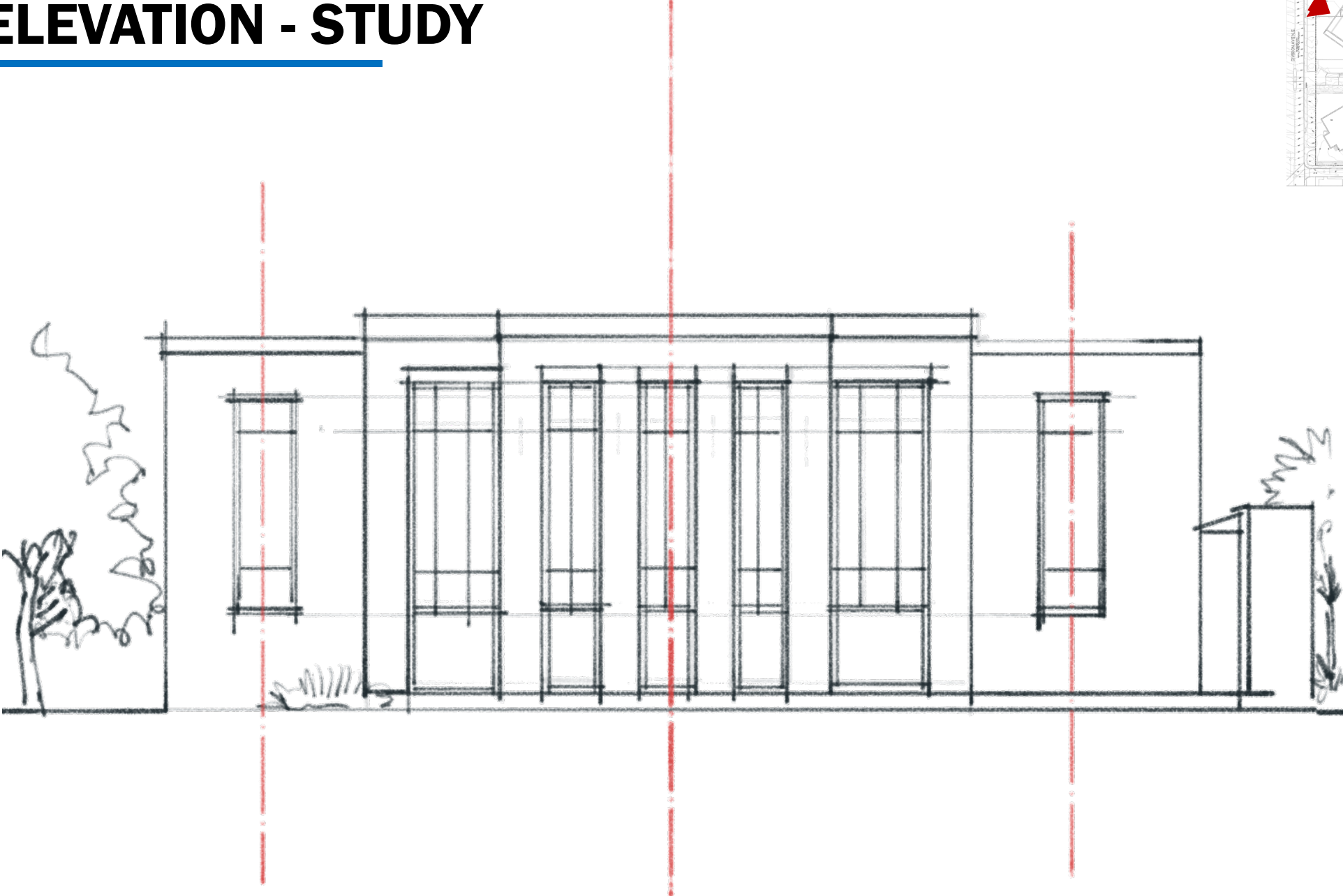
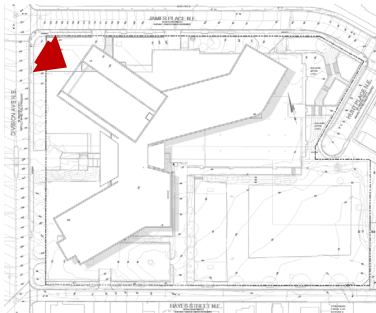


# GYM ELEVATION

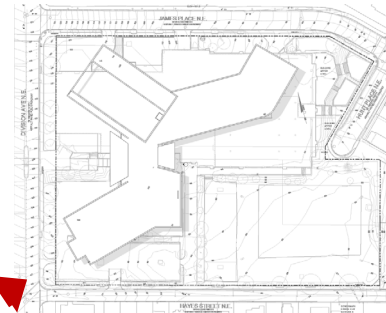
---



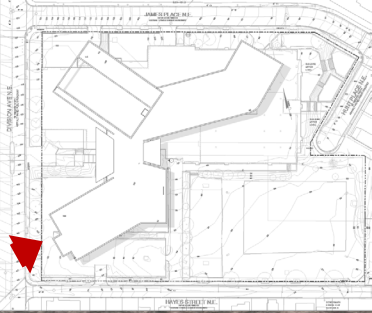
# GYM ELEVATION - STUDY



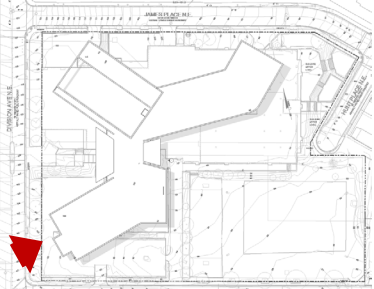
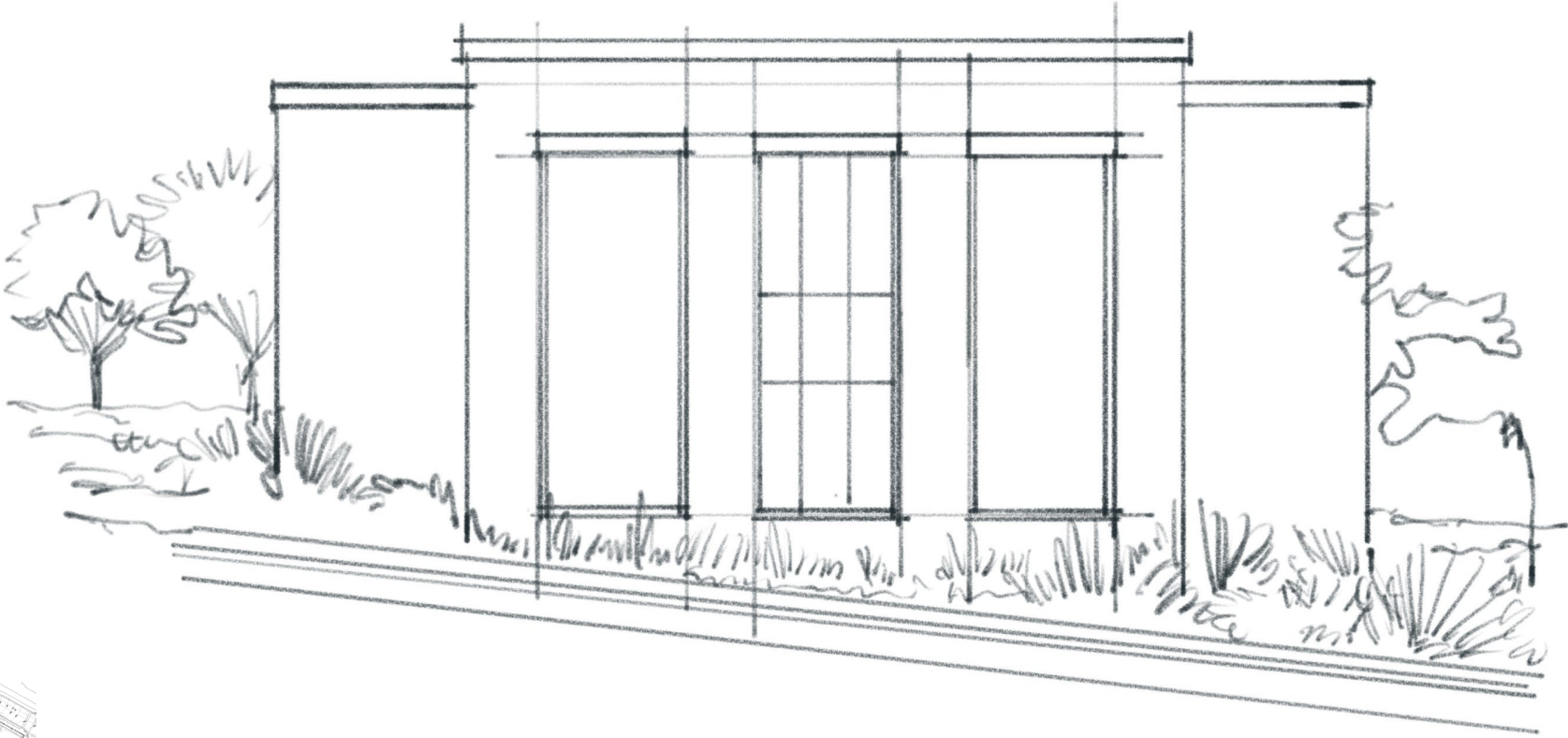
# DISCOVERY COMMONS & STAIRCASE – DIVISION AVE.



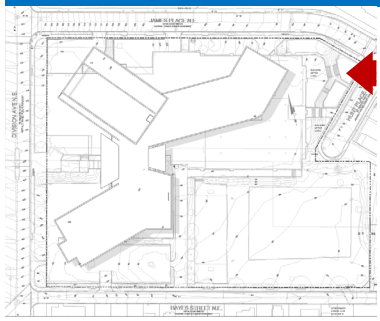
# DISCOVERY COMMONS & STAIRCASE



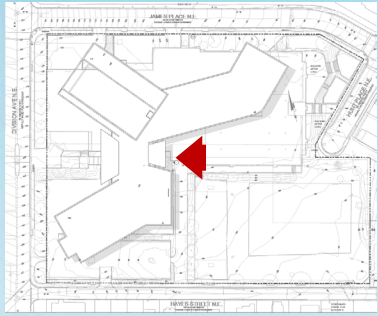
# DISCOVERY COMMONS & STAIRCASE - STUDY



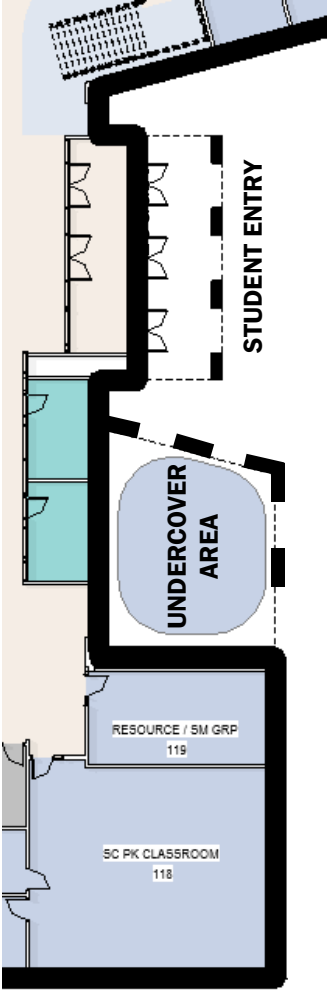
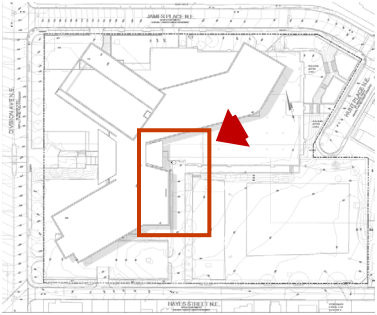
# STUDENT ENTRY VIEW – FROM 5-12 YEAR OLD PLAYGROUND



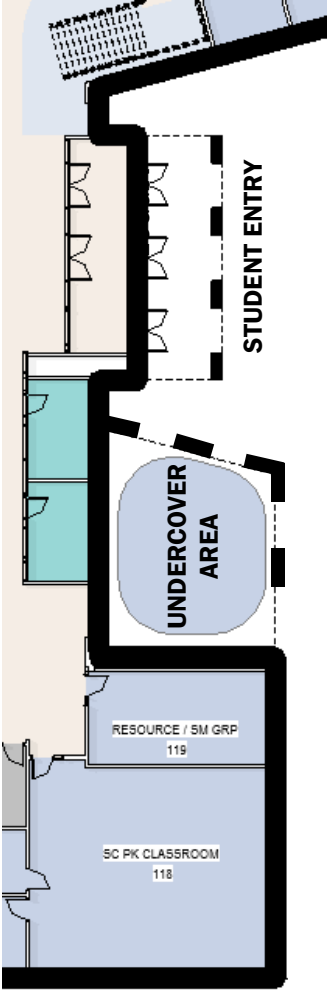
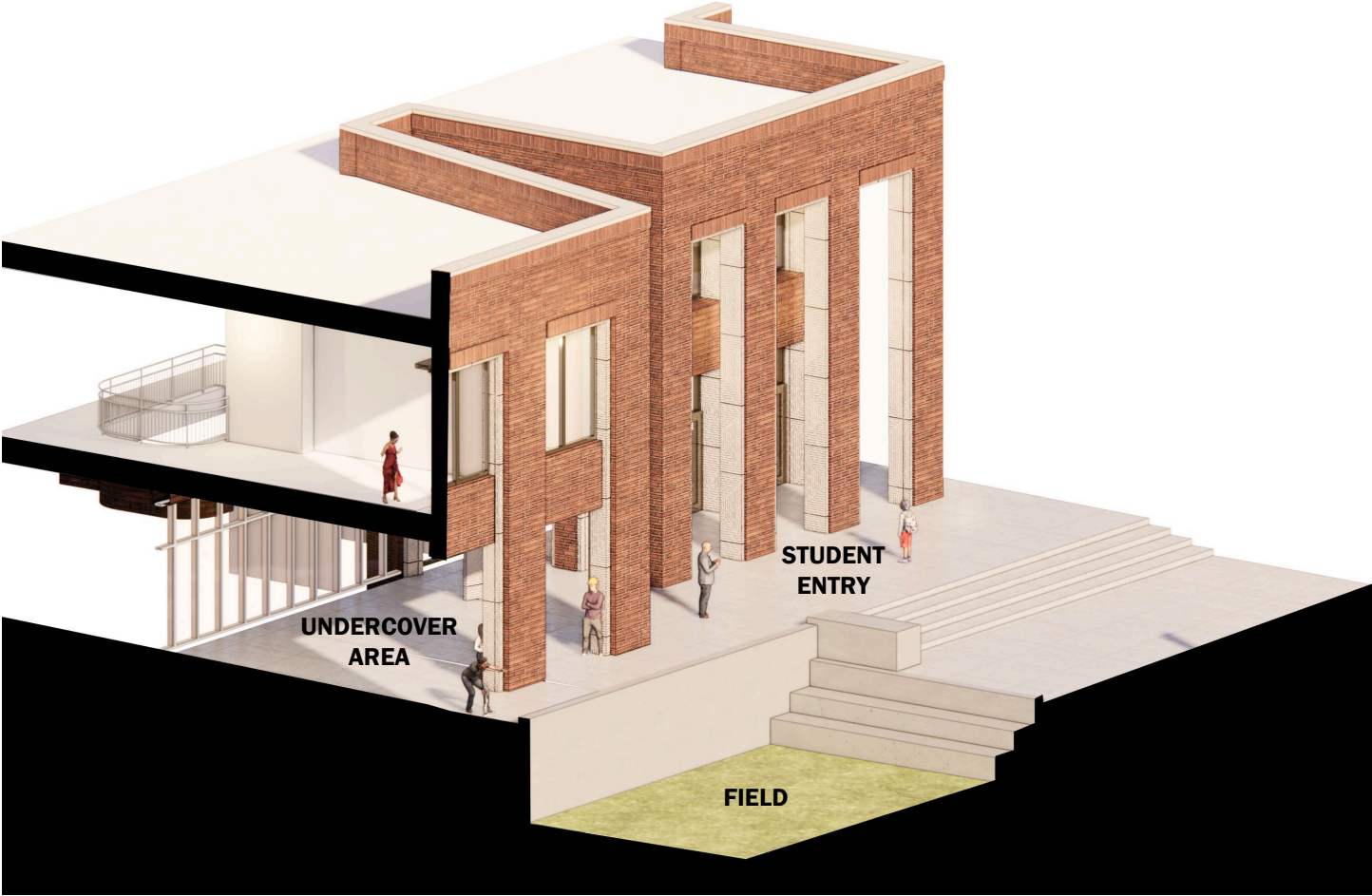
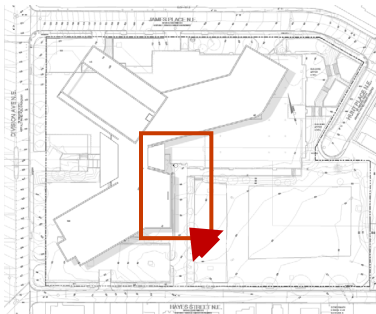
# STUDENT ENTRY VIEW



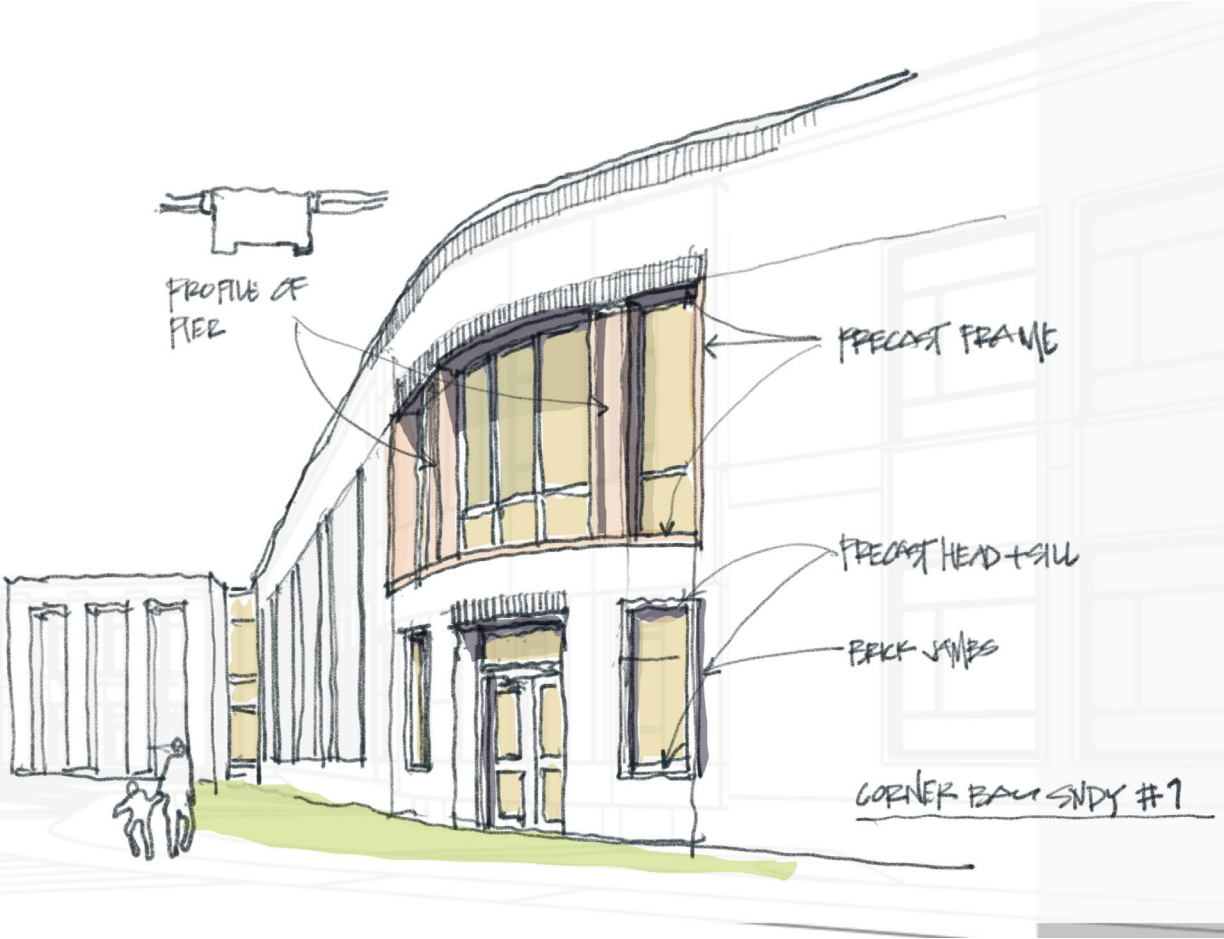
# ENTRY LOGGIA



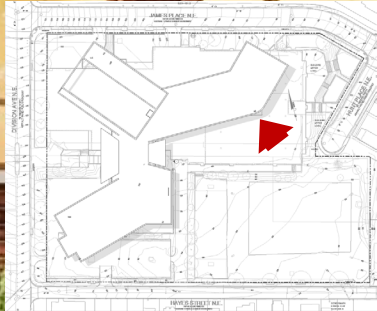
# UNDERCOVER PLAY AREA



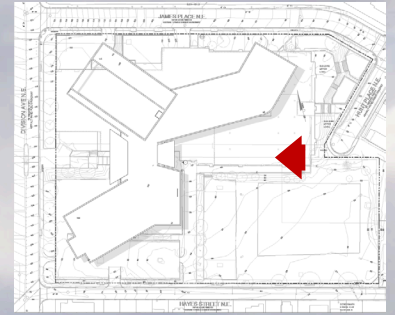
# CURVED CORNER OF DISCOVERY COMMONS



# NORTH WING VIEW



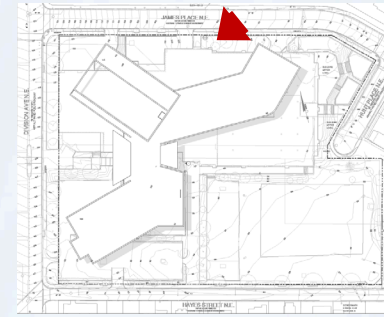
# STUDENT PICK UP/ DROP OFF VIEW



# CDC ENTRY VIEW



# JAMES PLACE VIEW



# MATERIAL PALETTE

RED BRICK | GLAZING WITH DARK MULLIONS | LIGHT BEIGE PRECAST



BRICK JAMBS + PRECAST SILL & LINTEL



BRICK COURSING – SOLDIER COURSE AT PARAPETS & PORTAL HEADS



PRECAST CONCRETE

# WEST ELEVATION – MAIN ENTRY



# EAST ELEVATION – STUDENT ENTRY



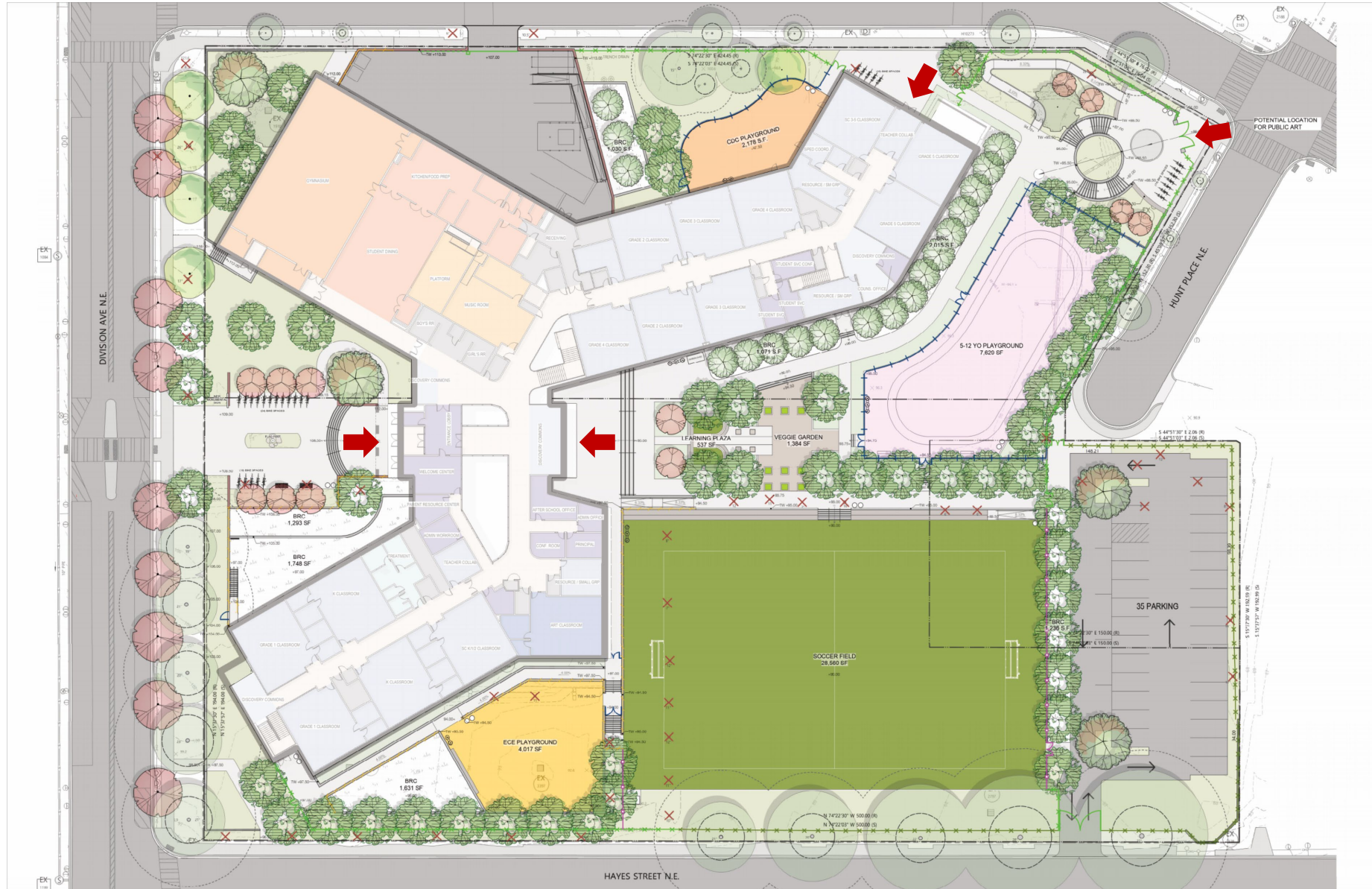
# SOUTH ELEVATION – CLASSROOMS



# NORTH ELEVATION – GYM & CDC

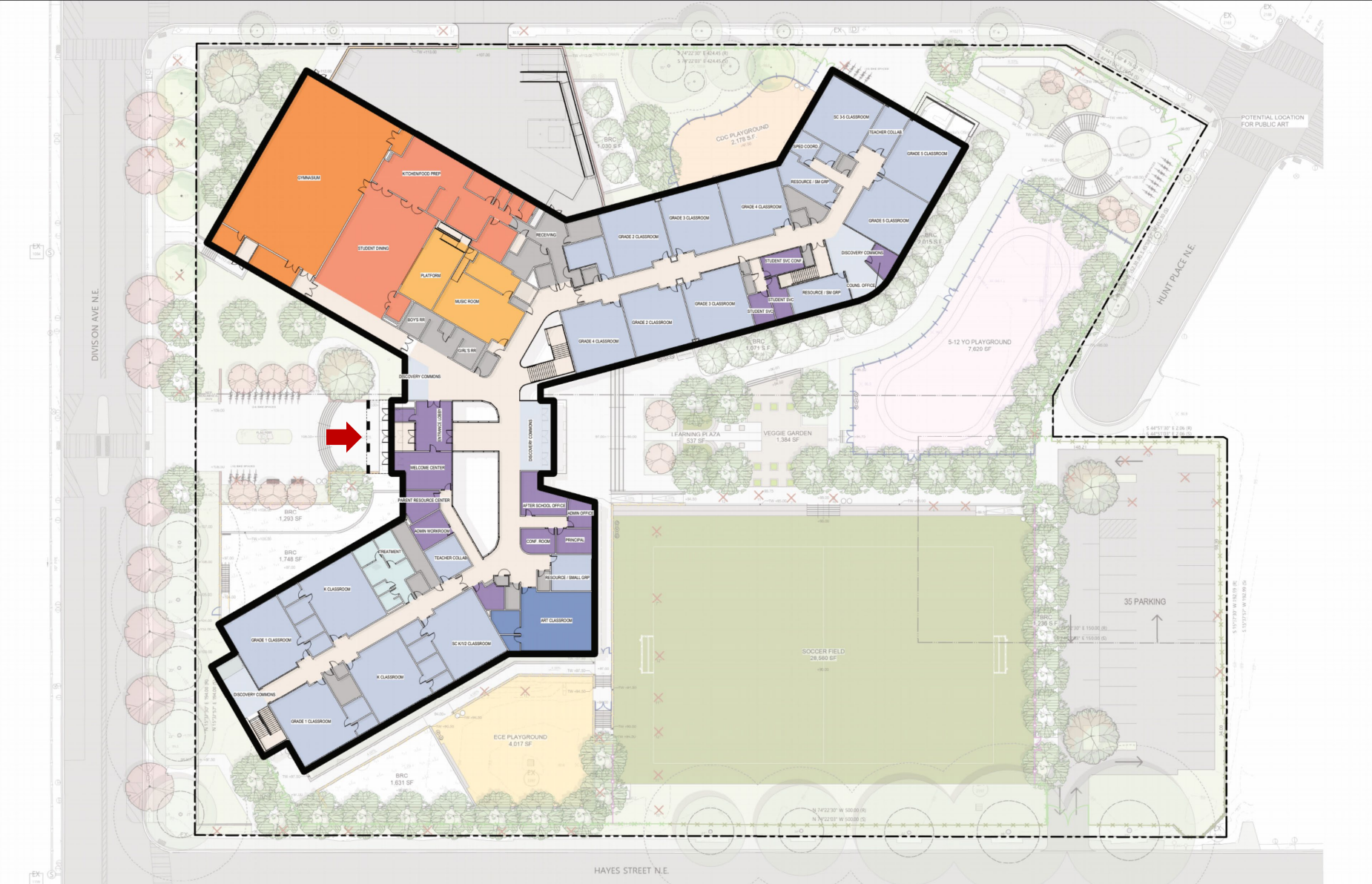


# SITE PLAN



# LEVEL 02 PLAN

- CAFE
- GYM
- ADMIN
- LIBRARY
- ACADEMIC
- MUSIC/ARTS
- CDC





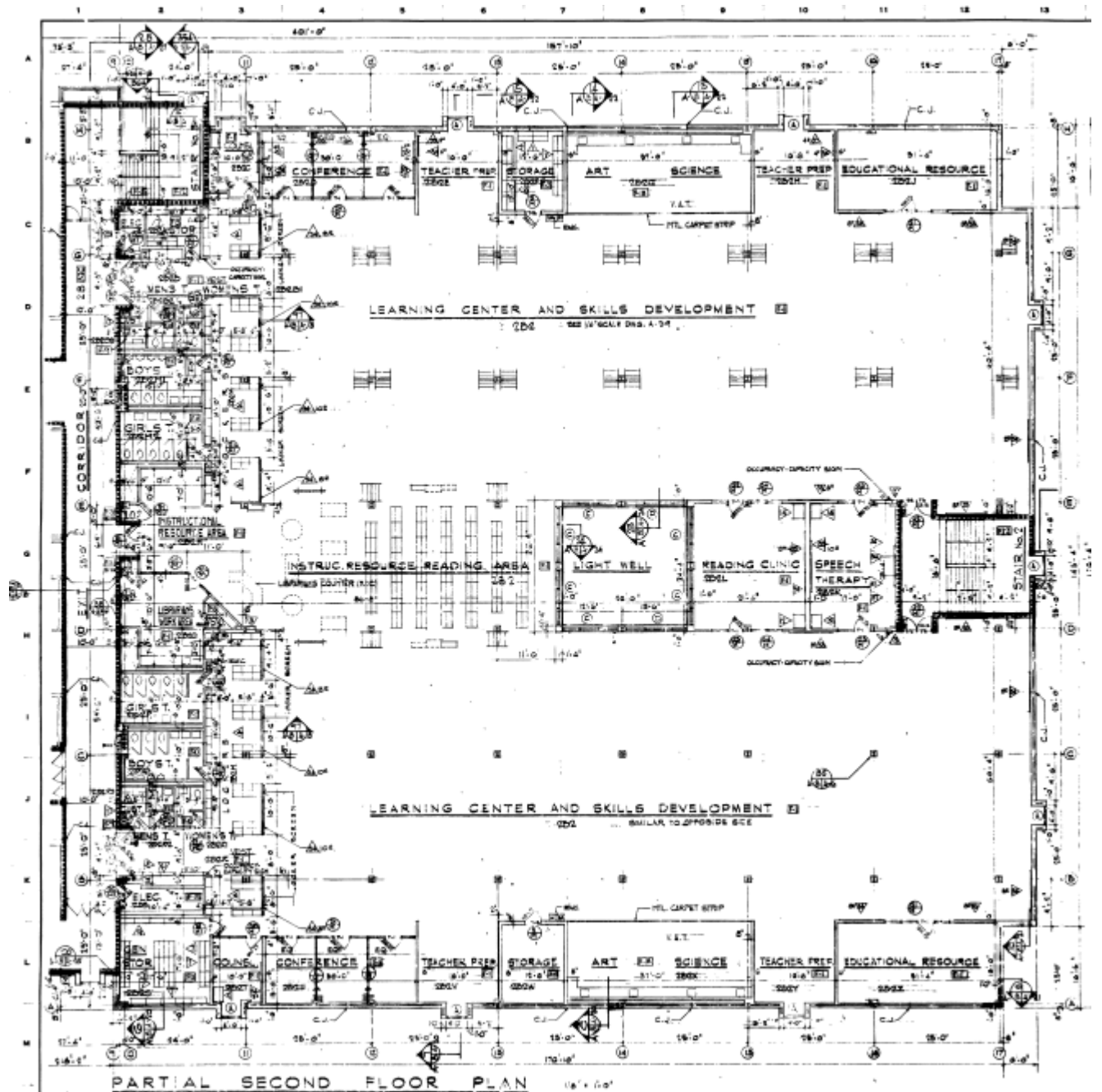


# APPENDIX

A photograph of an outdoor sports court, possibly a tennis or basketball court, enclosed by a black metal fence. The court has a distinctive white grid ceiling and several thick, reddish-brown pillars. The ground is covered in a thick layer of fallen autumn leaves in shades of orange, yellow, and brown. A tree trunk is visible on the left side of the frame. The word "APPENDIX" is overlaid in large, bold, white capital letters across the center of the image.

# EXISTING BUILDING

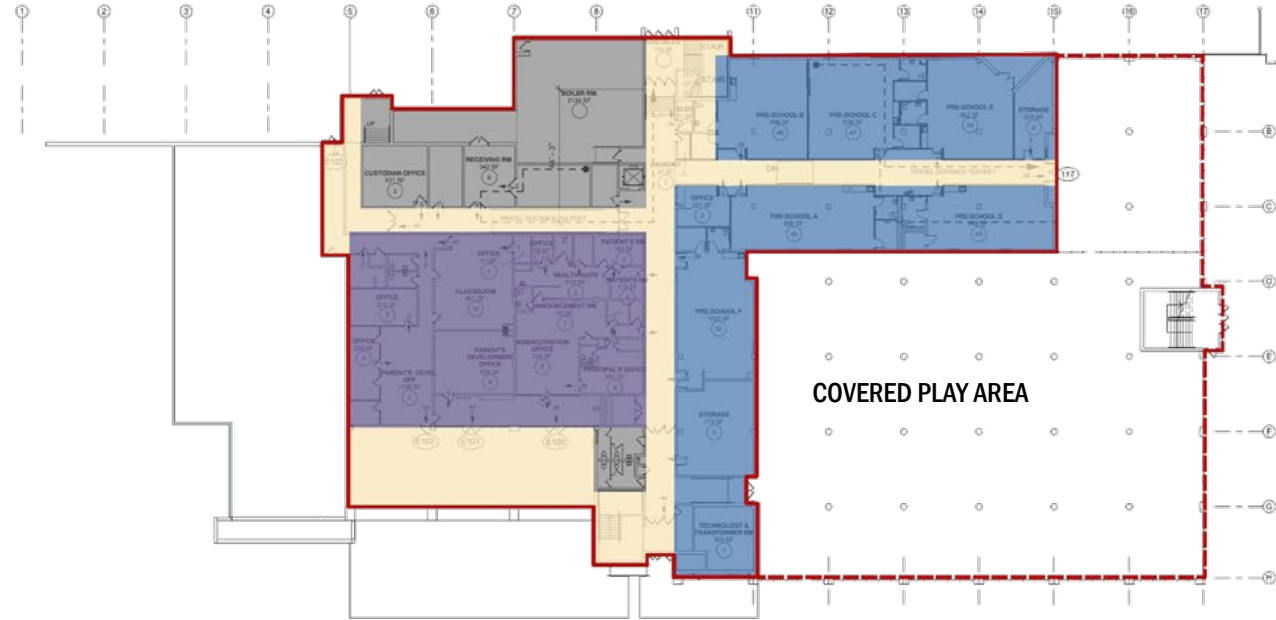
## PARTIAL SECOND FLOOR PLAN - 1979



# EXISTING BUILDING

## ORGANIZATION

FIRST FLOOR



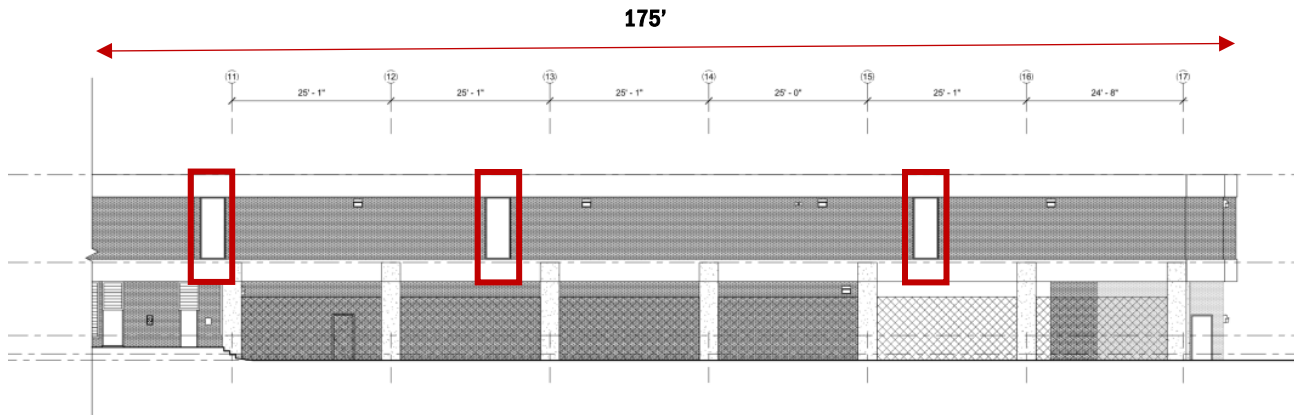
SECOND FLOOR



- ADMINISTRATION
- ACADEMIC
- ART/ MUSIC/ MEDIA
- GYM + CAFE
- SUPPORT

# EXISTING BUILDING

## SPACES WITHOUT WINDOWS – SECOND FLOOR



C) SOUTH ELEVATION - PART B  
SCALE: 1/8" = 1'-0"

**81% OR 26,430 SF OF SPACE OUT OF 32,300 SF DEVOID OF DIRECT VENTILATION & NATURAL LIGHT.**

**8000 SF OF LEARNING/ ADMIN SPACE WITHOUT WINDOWS**



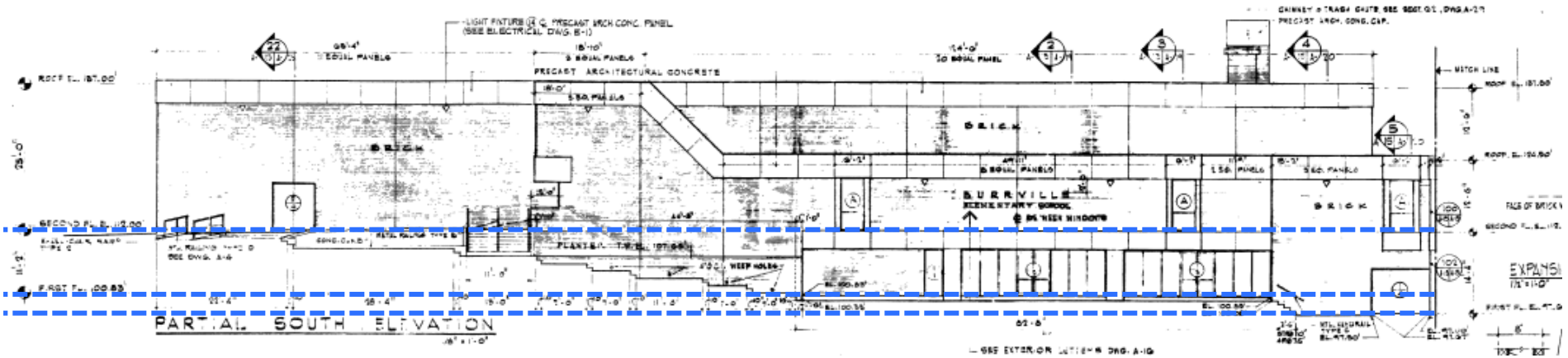
# EXISTING BUILDING

## LEVEL & HEIGHT CHALLENGES

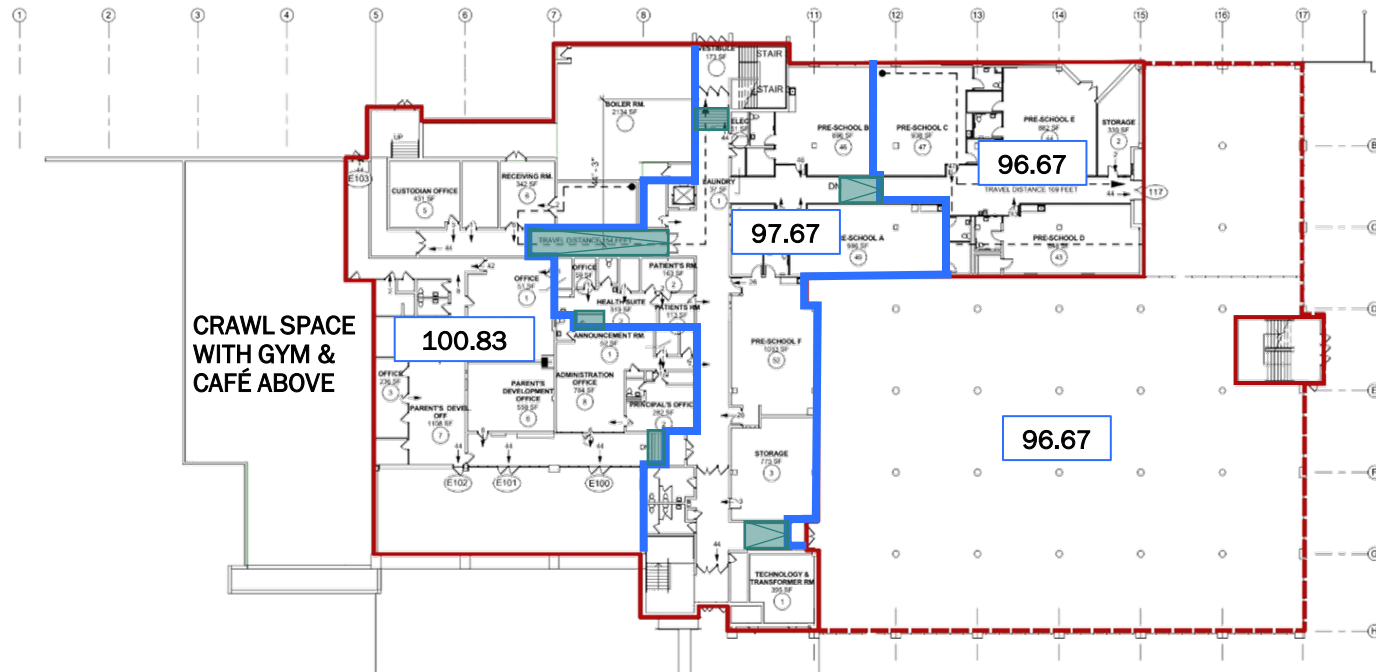
HA

SECOND FLOOR @ 112

FIRST FLOOR @ 100.83  
COVERED PLAY @ 96.67



PARTIAL SOUTH ELEVATION



FIRST FLOOR PLAN

# DESIGN PRINCIPLES



**1** Create an Ecosystem of Reading and Exploration



**2** Project a Civic Presence in Burrville



**3** Create a Well-Daylit School Environment



**4** Shape Memorable / Interactive Outdoor Spaces



**5** Create Classroom 'Neighborhoods'



**6** Design to the Scale of the Child



**7** Design the Building to Support the Community



**8** Celebrate Burrville's Heritage



**9** Create Spaces to Gather and Connect



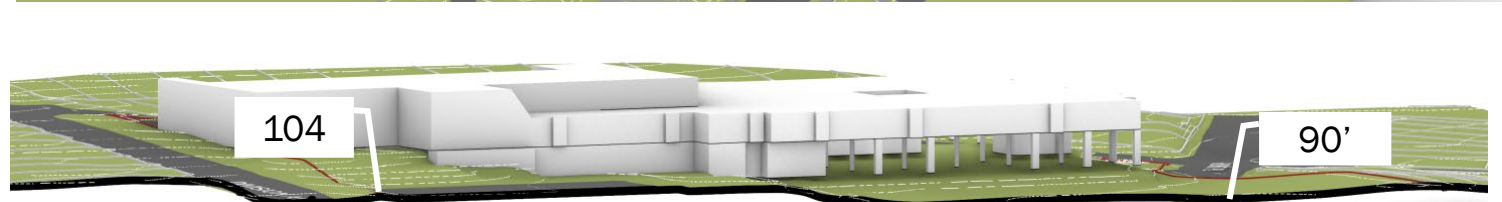
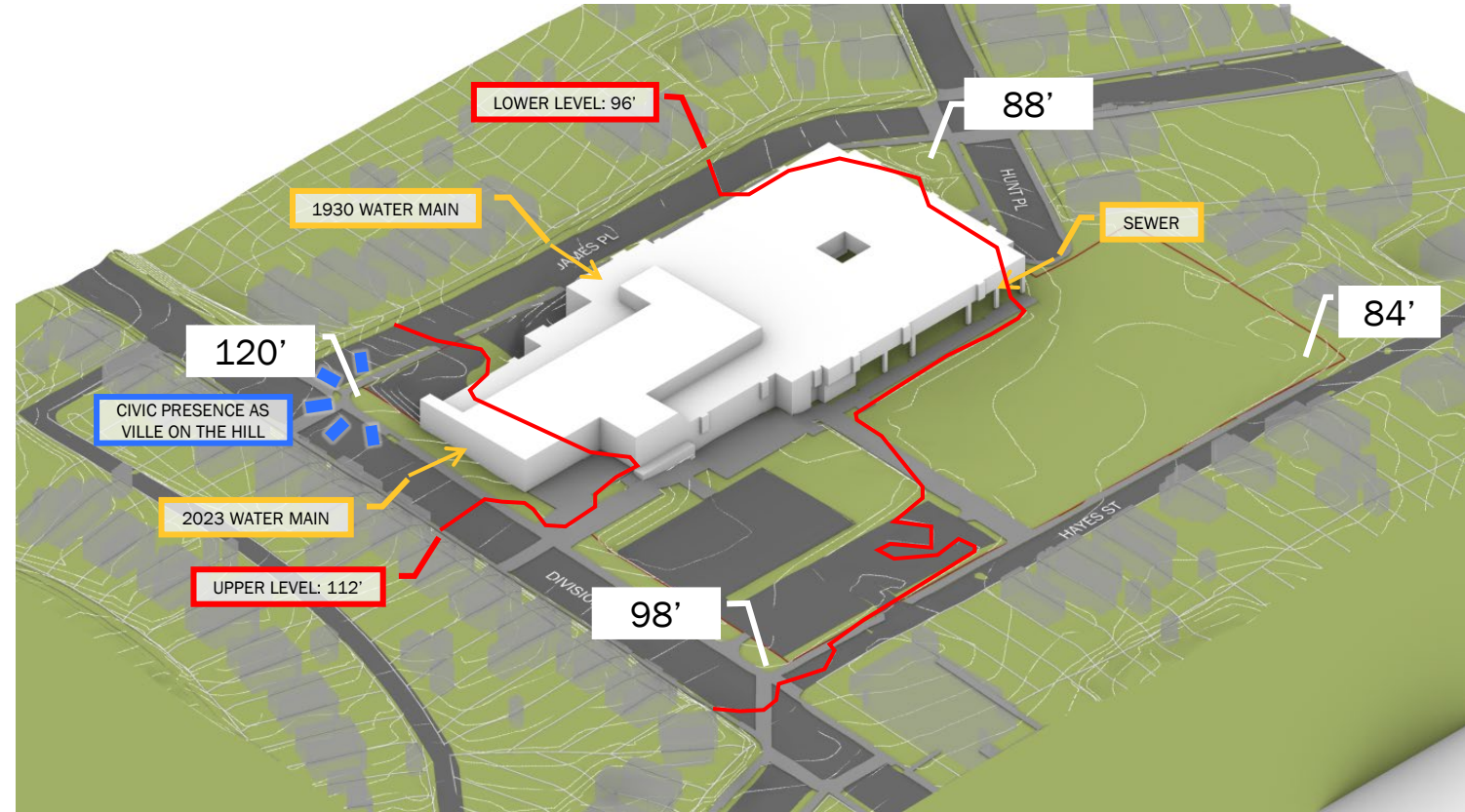
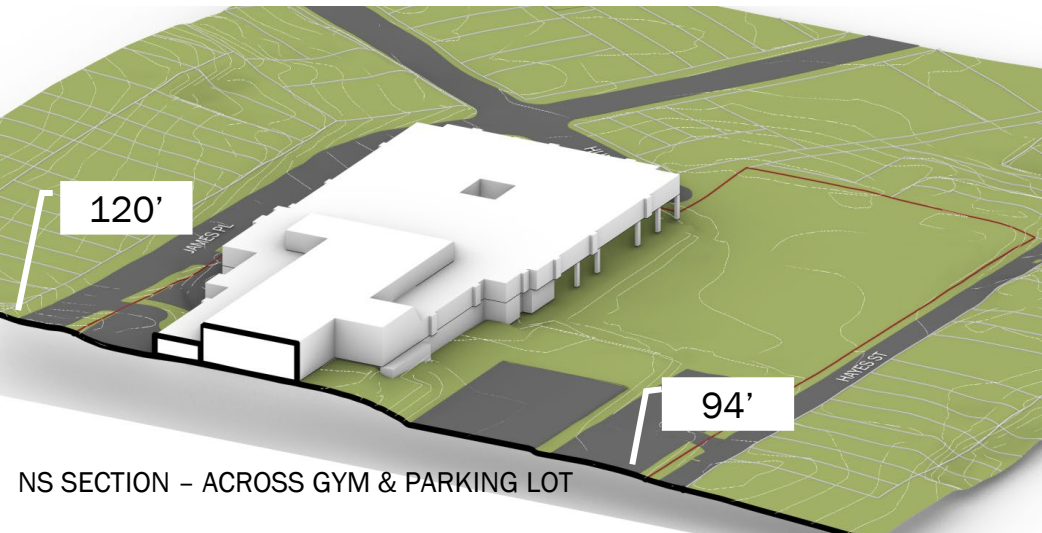
**10** Achieve Net Positive Education

# SITE CONDITIONS

## TOPOGRAPHY

Design to improve on existing grading:

- Locate entrances/exits as close to level with exterior grade as possible.
- Civic Presence as the Ville on the Hill: Make the school recognizable from Division Ave. especially at the Division & James corner.
- Locate field and play space on flatter areas.



EW SECTION – ACROSS PARKING LOT & FIELD

# RELATIONSHIP WITH THE CONTEXT



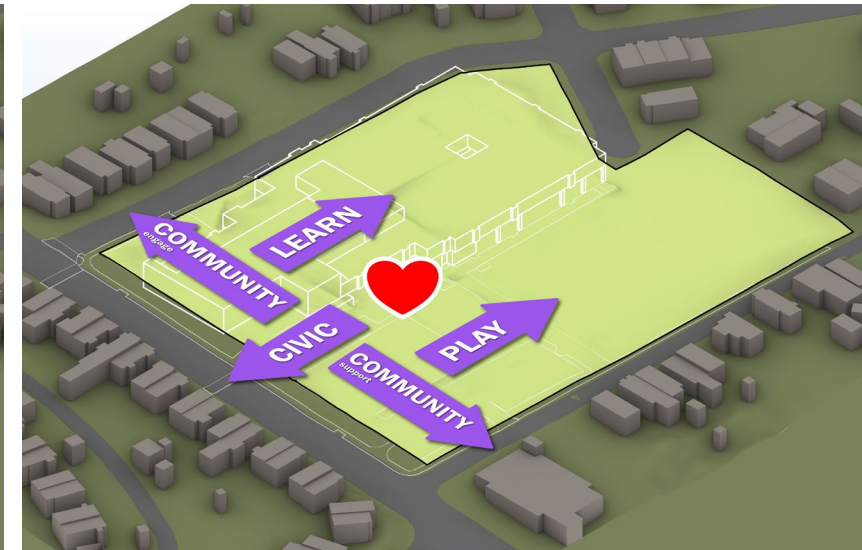
FRONT & SERVICE

- The site establishes its front along Division Avenue, creating a strong public presence and primary access for the school.



STREET VIEWS

- These corners serve as important points of arrival and anchor the frontage to project a welcoming identity.



CIVIC PRESENCE

- The school will establish a clear civic presence along Division Avenue & relate to the neighborhood scale of two story buildings along James Place & Hayes Street.

# VILLE ON THE HILL

BURRVILLE ELEMENTARY SCHOOL

Safe space & welcome environment

Library as the heart

SHARP - Soaring high to reach our potential

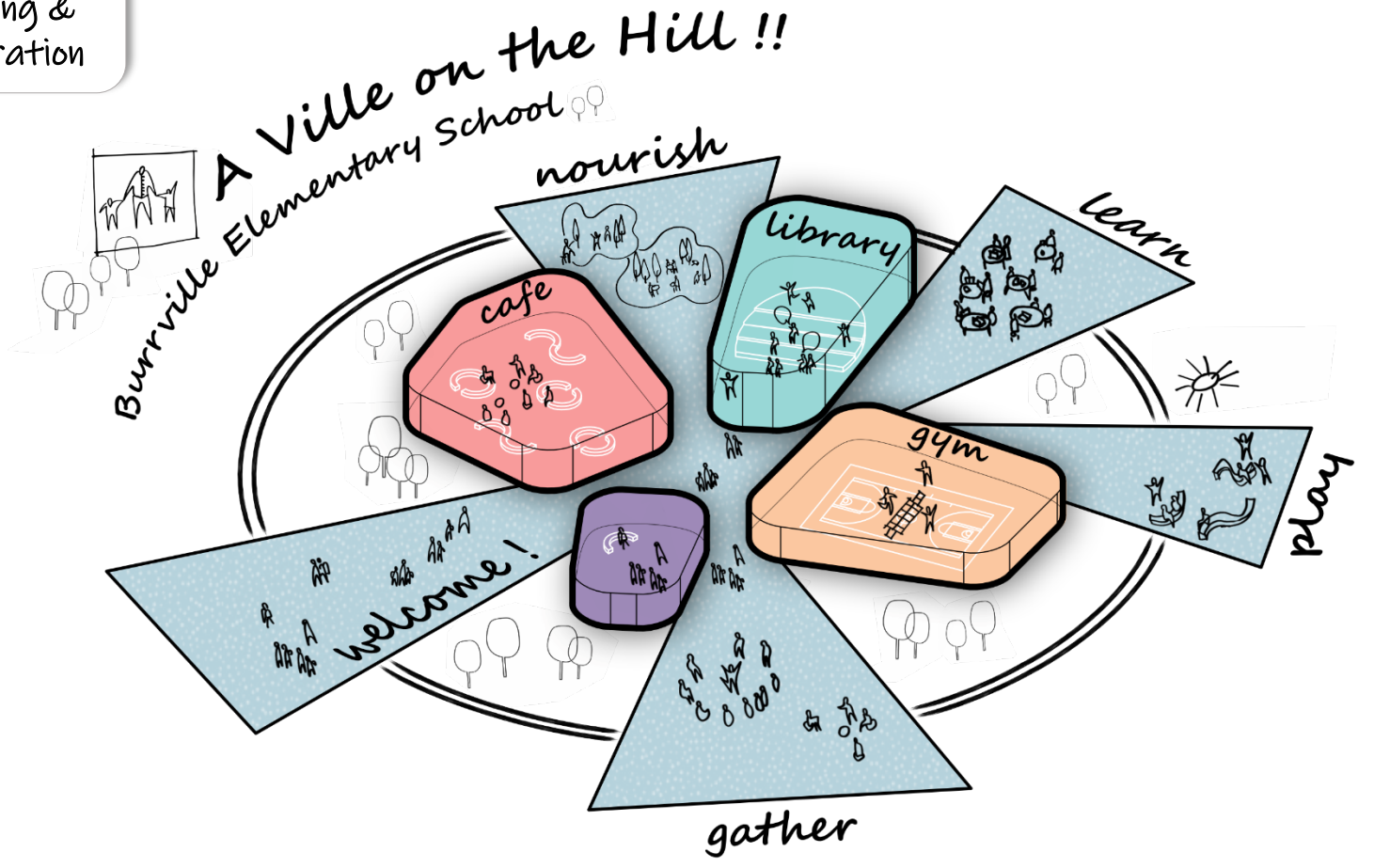
Sense of community

We are here!!

Gym & café collocated

Luminous!

Foster reading & Exploration



# CONCEPT MASSING

- Civic presence along Division Ave
- Co-located gym and dining that can be used as one multipurpose space
- Library, gym, and dining accessible in an after-hours zone
- Loading and adjacent kitchen located off James like existing condition
- Protected pick-up/drop-off and exterior student play spaces
- Opportunity for undercover space

