



# DREW ELEMENTARY SCHOOL

## COMMISSION OF FINE ARTS

### CONCEPT REVIEW SUBMISSION

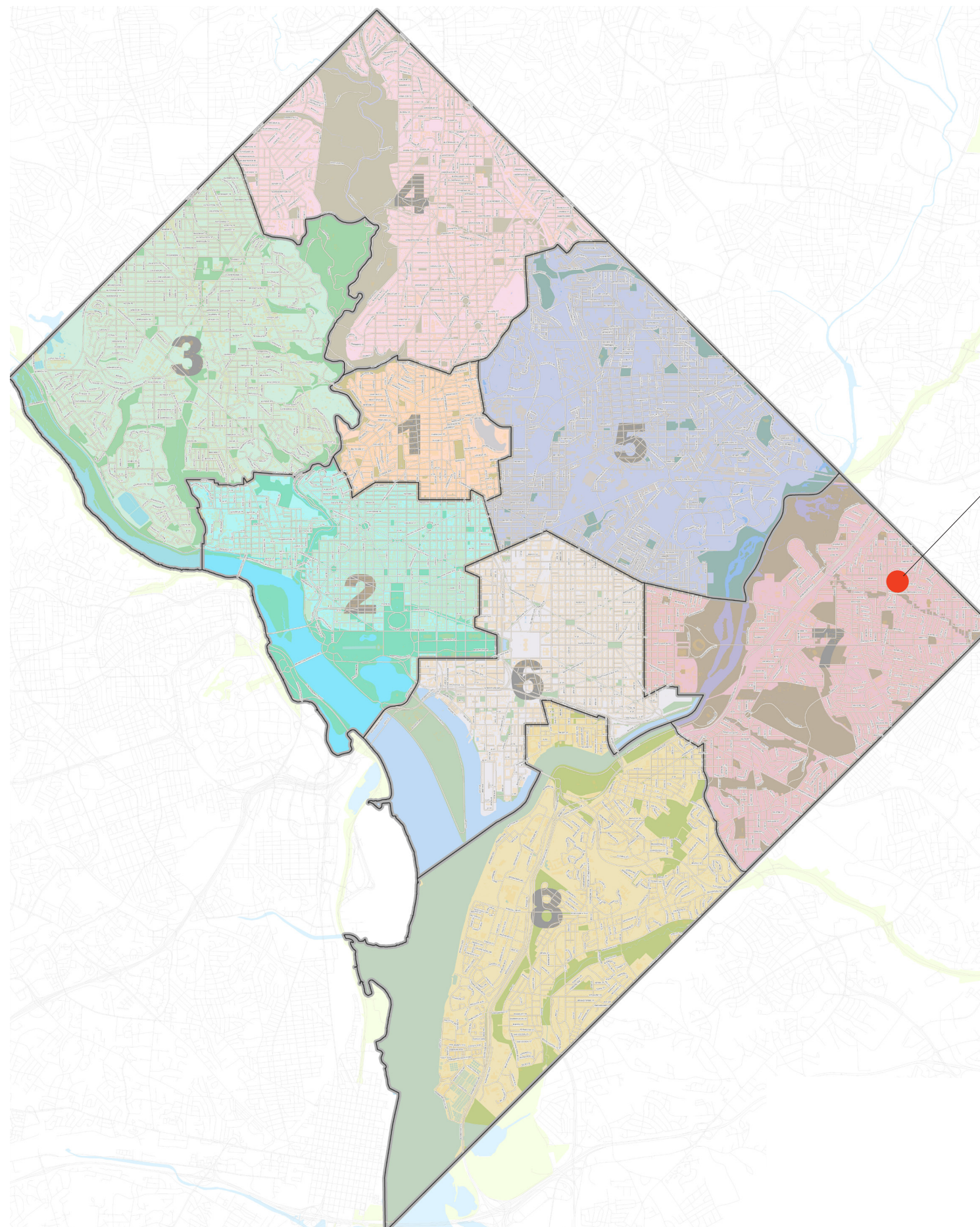
FEBRUARY 20, 2025



DISTRICT OF COLUMBIA  
PUBLIC SCHOOLS

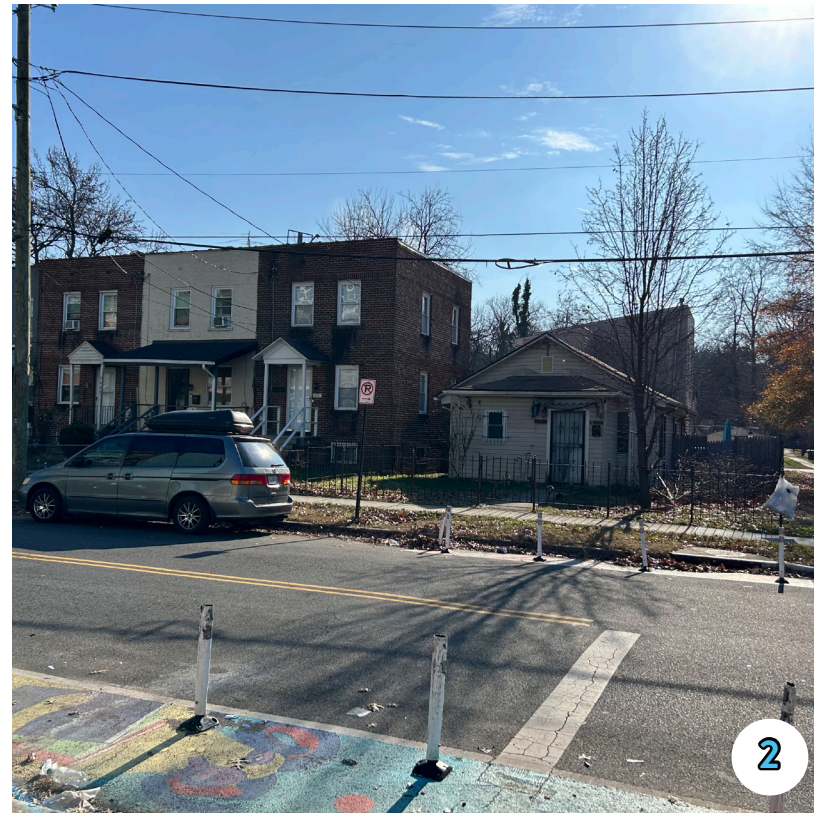


# 1 EXISTING SITE + BUILDING ANALYSIS

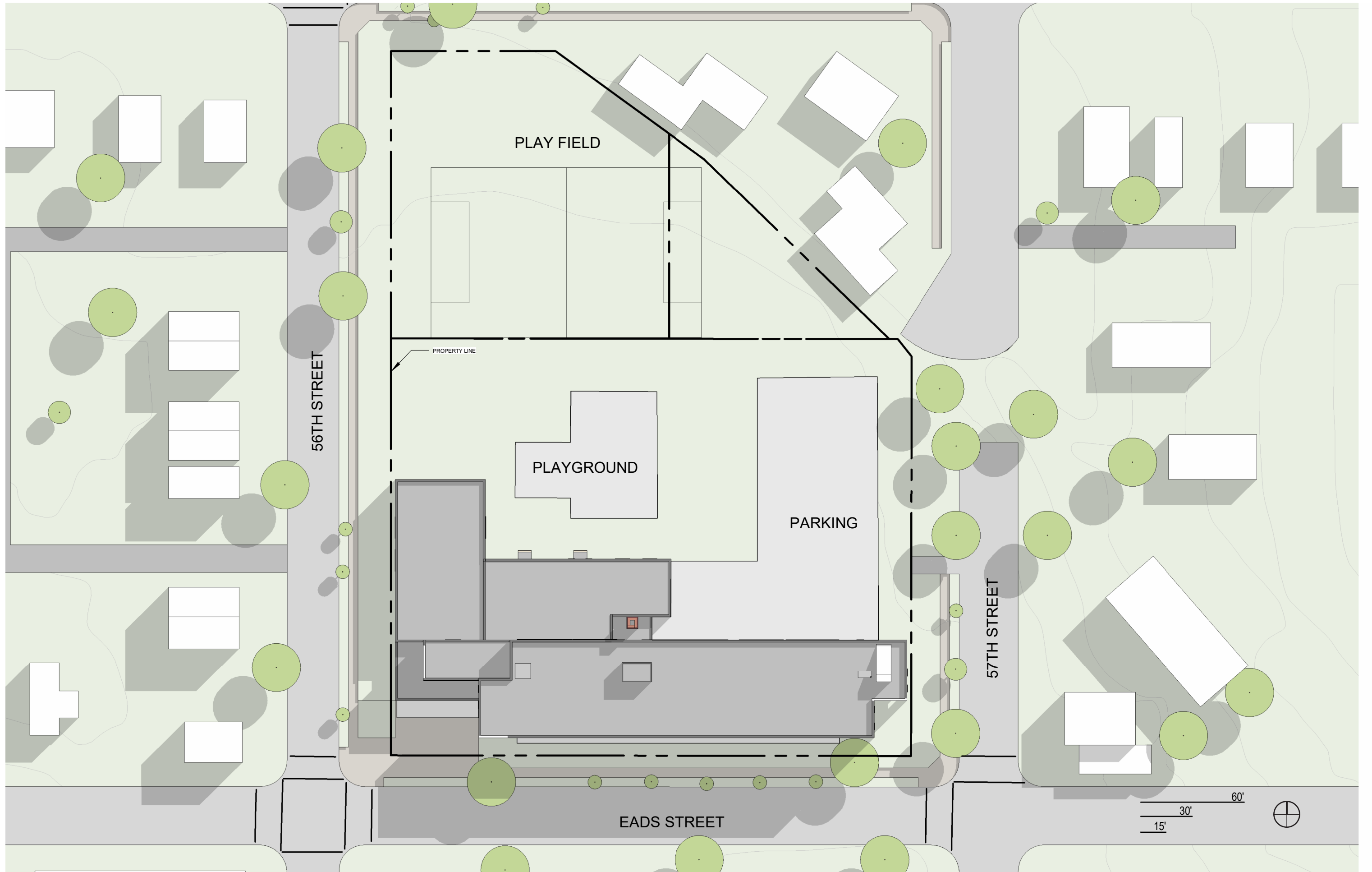


**Drew Elementary  
School**

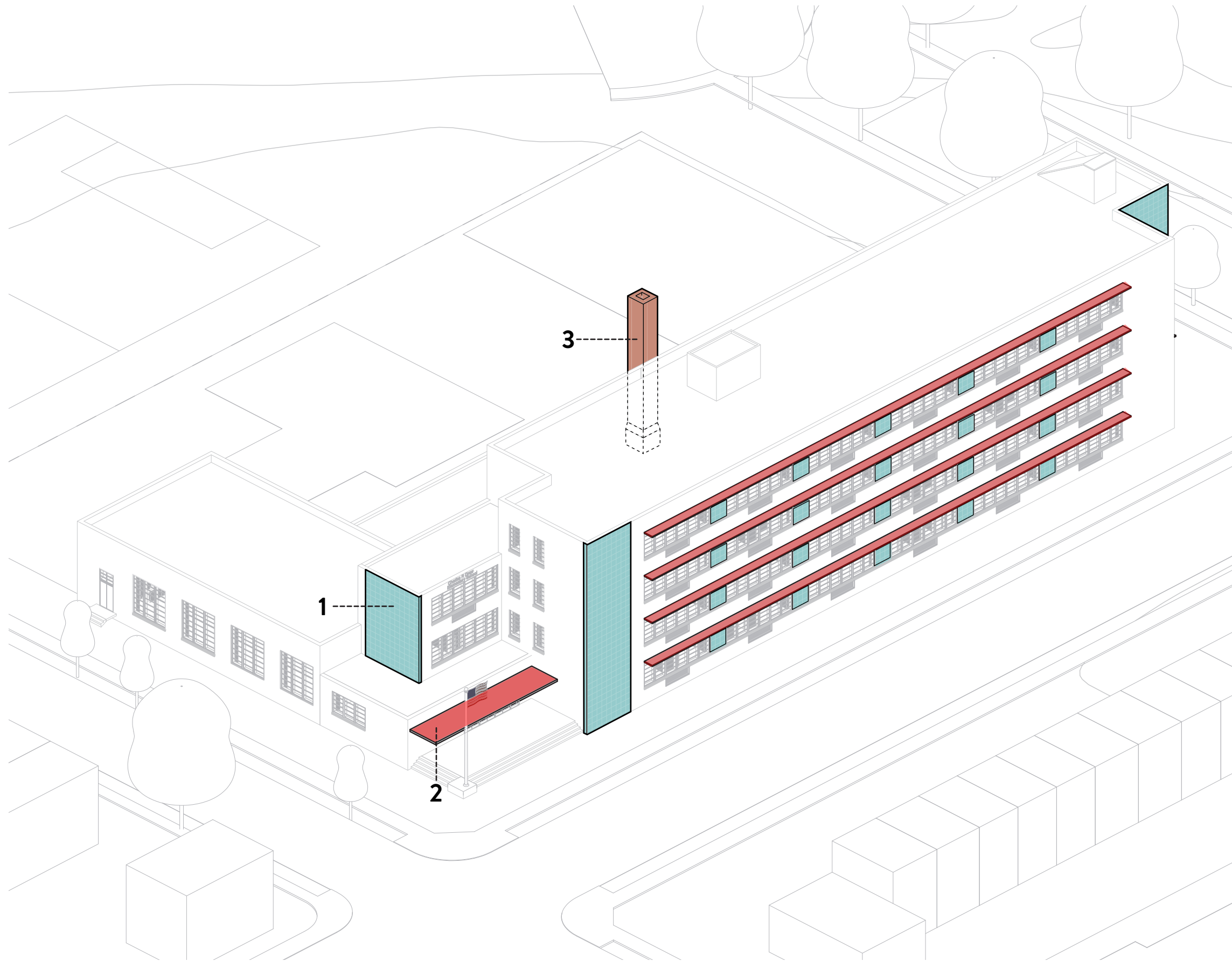
56TH ST. - WEST SIDE (N - S)

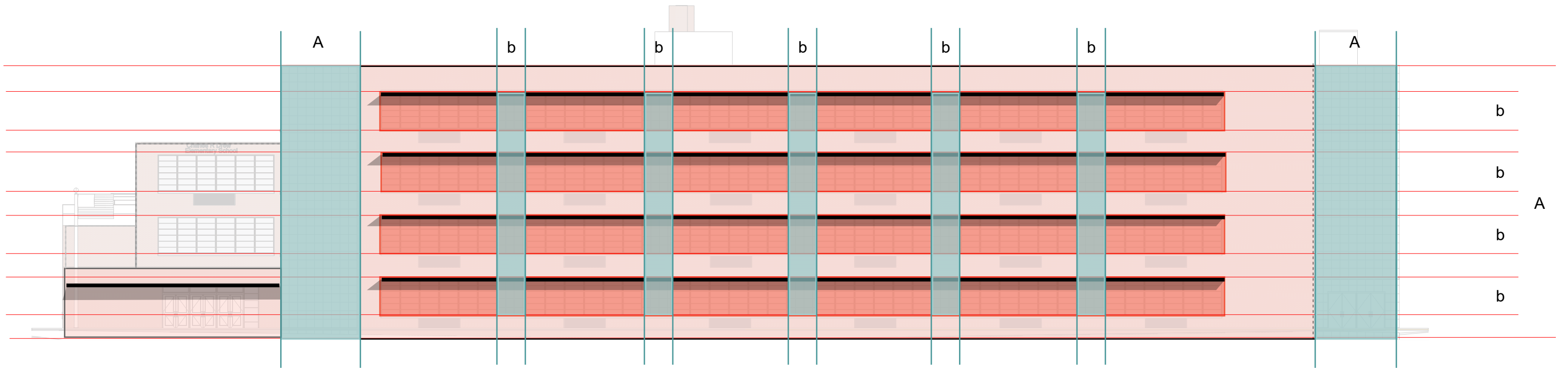


EADS ST. - SOUTH SIDE (W - E)

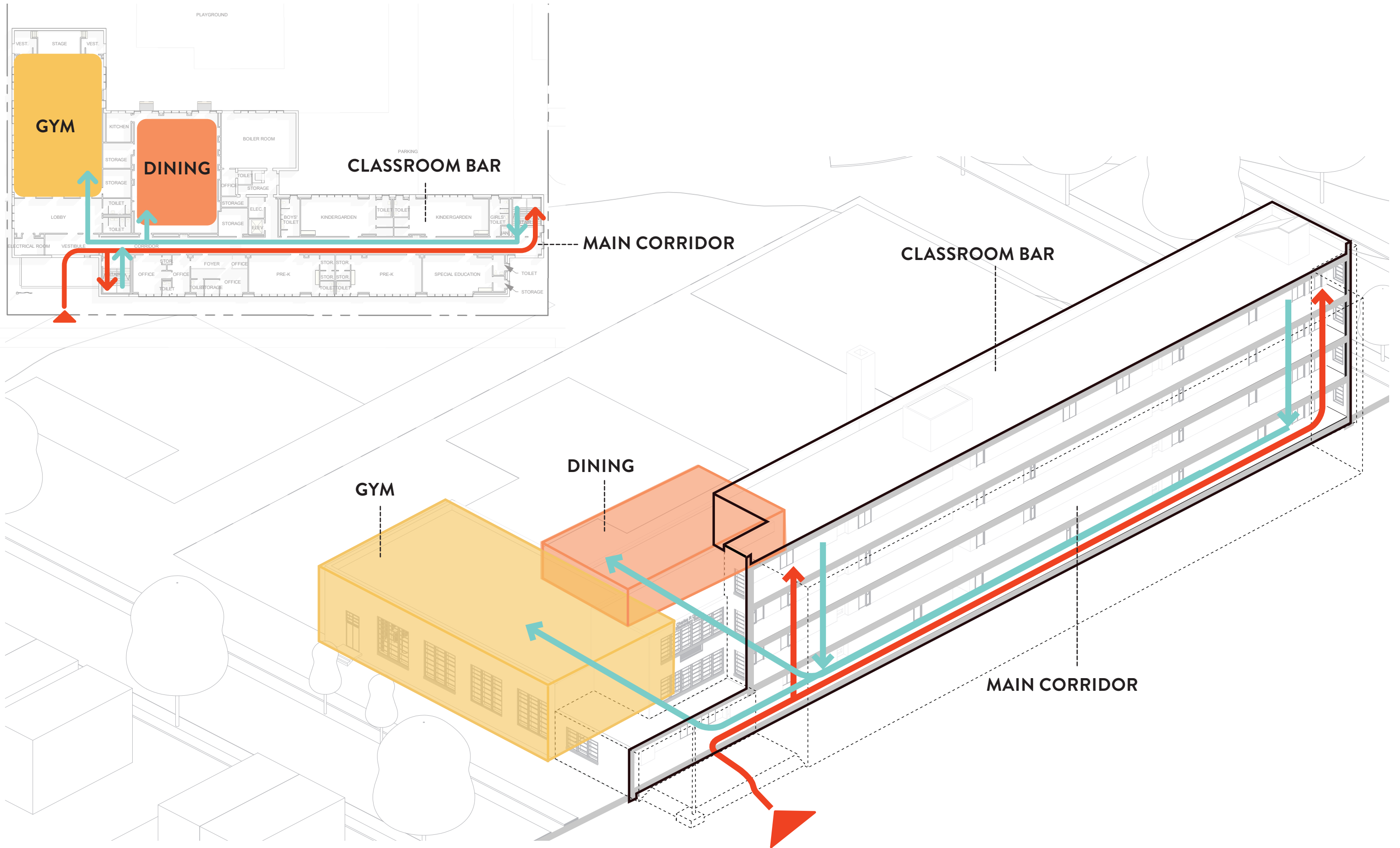












# 2 PROPOSED CONCEPT DESIGN

# DESIGN GOALS

## CREATE A SCHOOL HEART

- CENTRALLY LOCATED
- GENEROUS SPACE
- CONNECTING LEVELS

## INVITE THE STUDENTS AND THE COMMUNITY

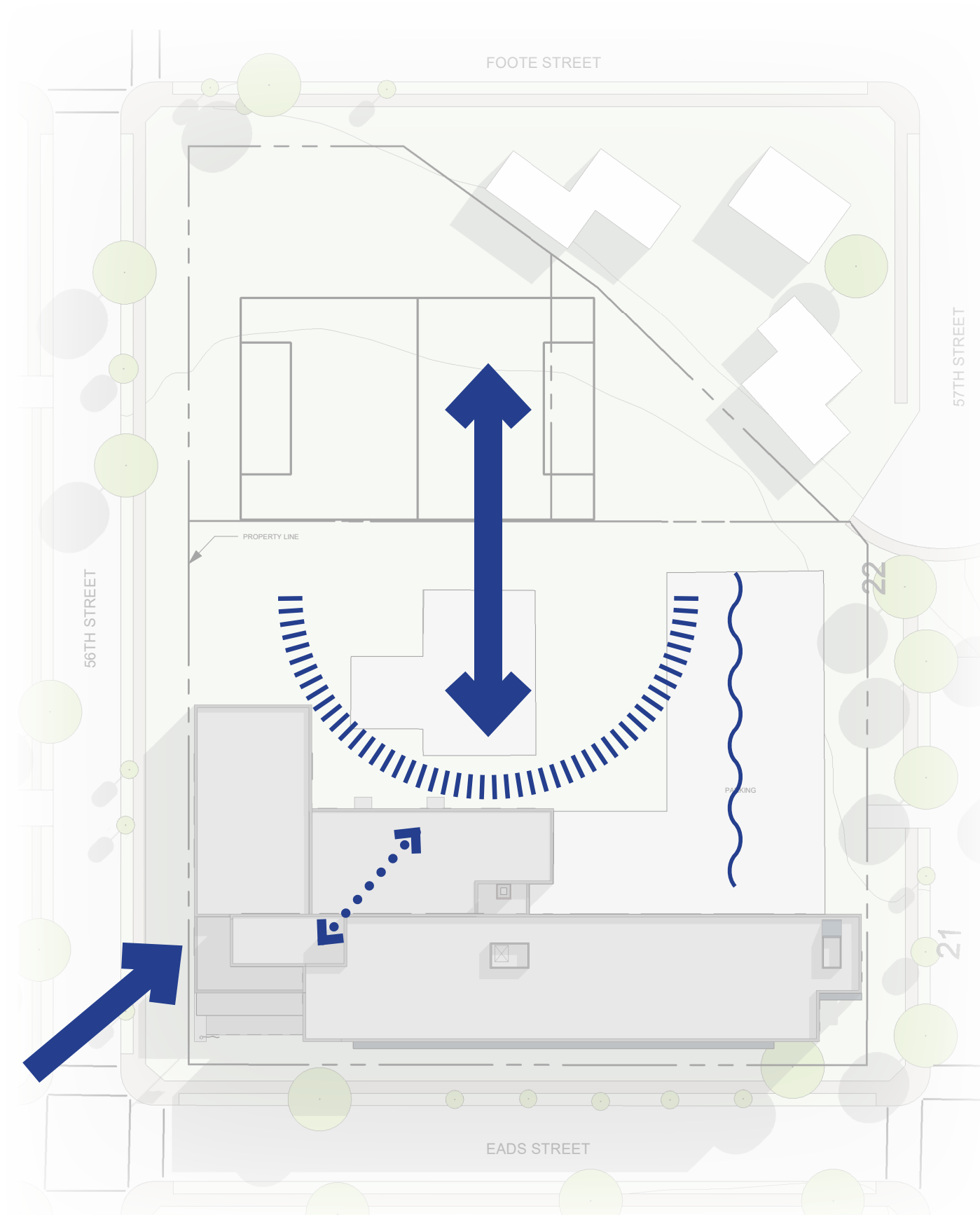
- GENEROUS ENTRANCE VISIBLE FROM CORNER
- WELCOMING OUTDOOR ENTRY PLAZA

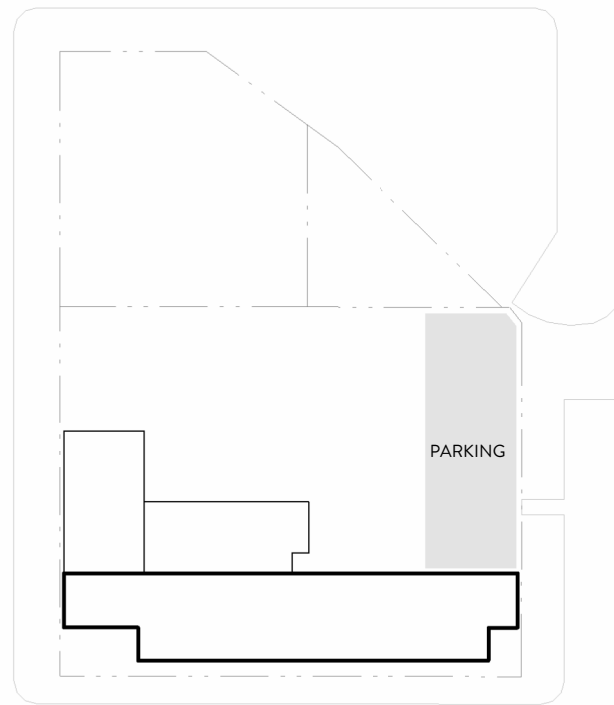
## EXTENSION TO THE OUTDOORS

- BUILDING OPEN TOWARDS THE DEPTH OF THE SITE
- TRANSPARENCY FROM PUBLIC ENTRY, TO SCHOOL OUTDOORS, THROUGH COMMON SPACES

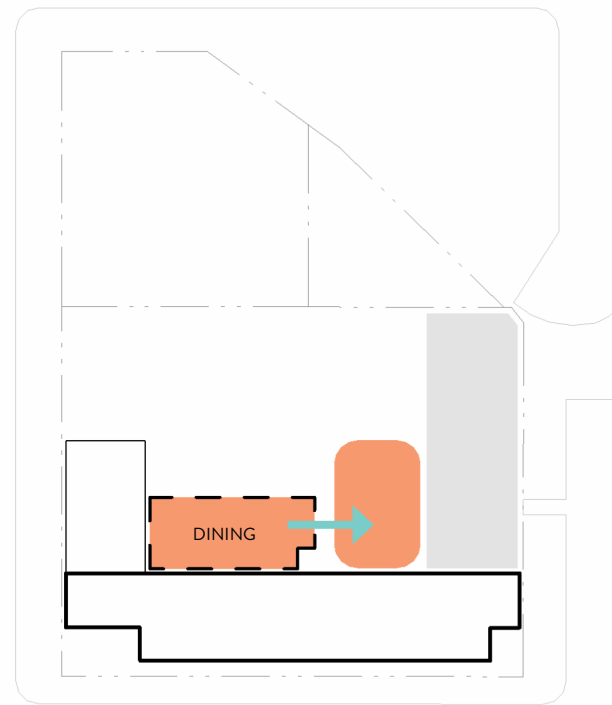
## CREATE A WELCOMING AND PROTECTED OUTDOOR ENVIRONMENT

- GENEROUS COMMON SPACES
- PLAY COURTYARD
- PARKING AND LOADING SCREENED

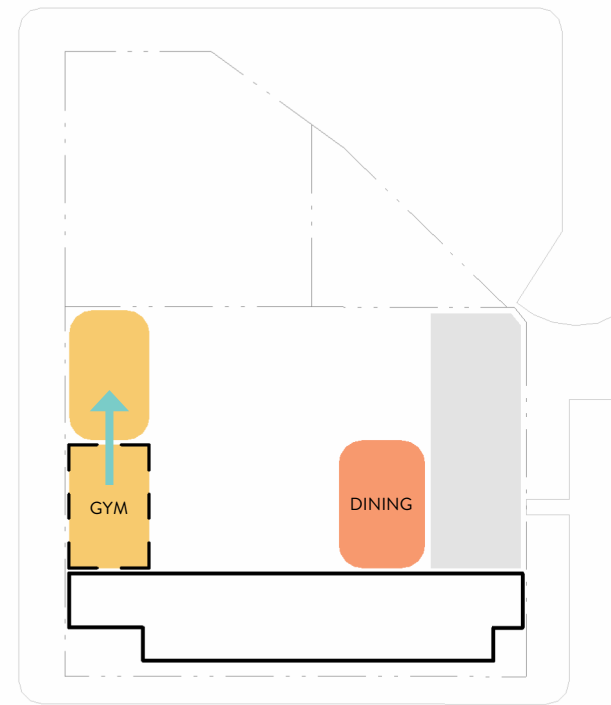




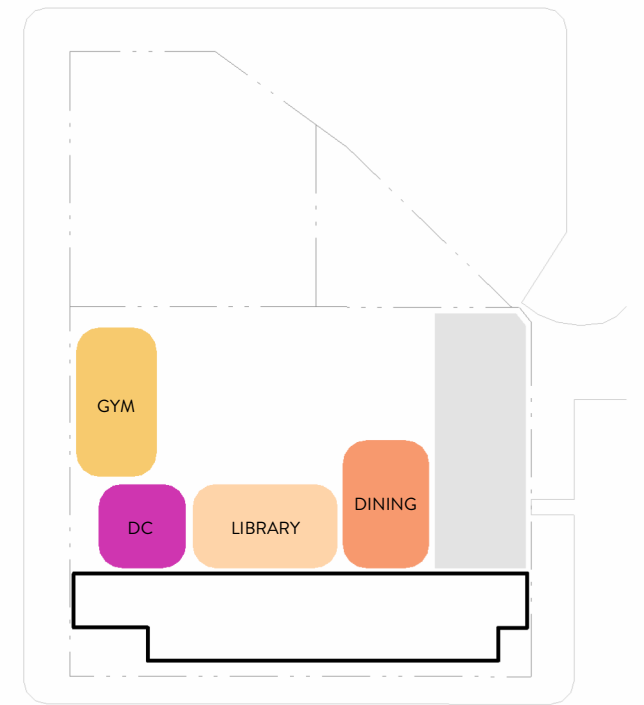
**STEP 1:** LOCATE  
PARKING + LOADING



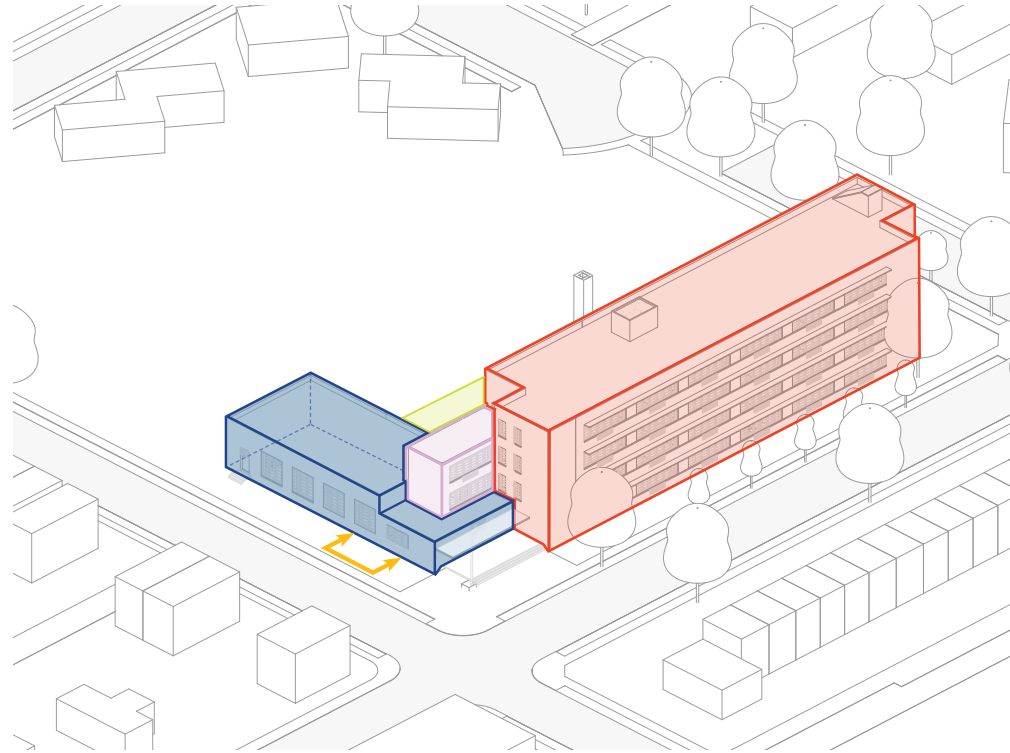
**STEP 2:** SHIFT DINING  
ADJACENT TO LOADING



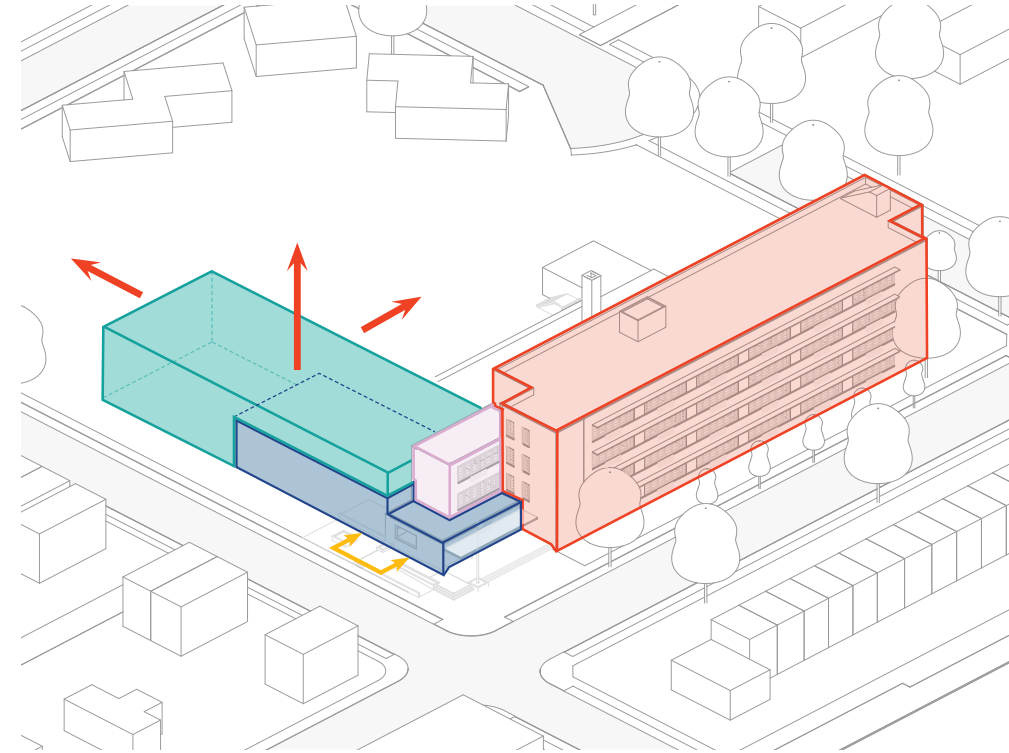
**STEP 3:** SHIFT GYM TO MEET VERTICAL  
REQ. + MAINTAIN CLOSE  
CONNECTION TO ENTRY



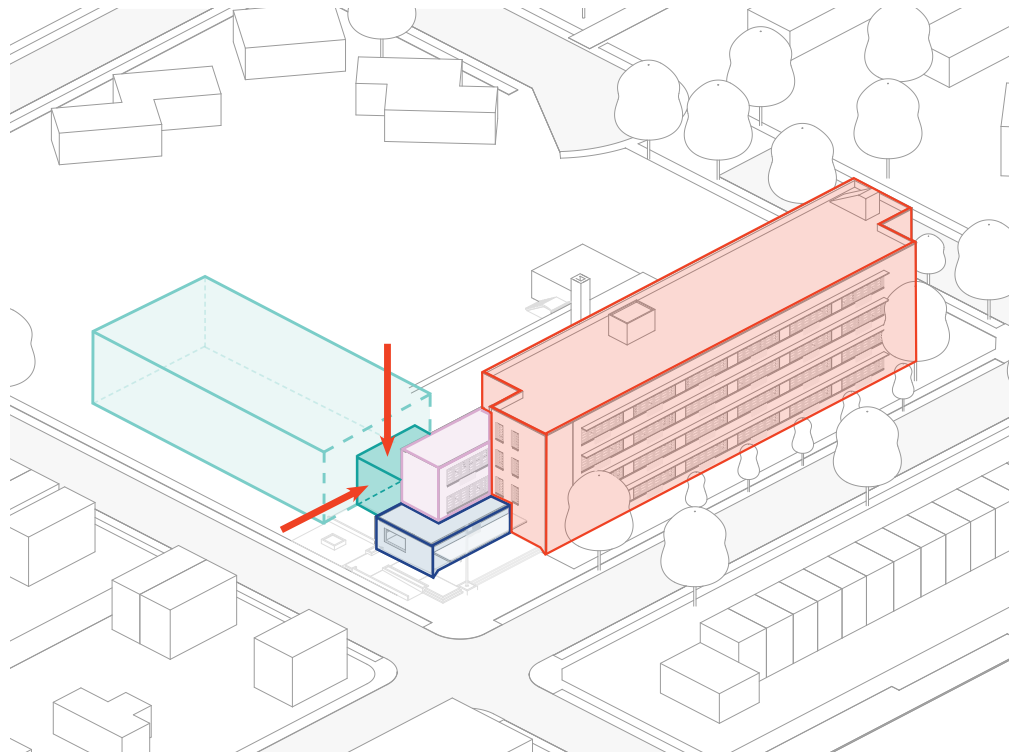
**STEP 4:** CREATE HEART OF  
SCHOOL WITH DC +  
LIBRARY NEAR ENTRY



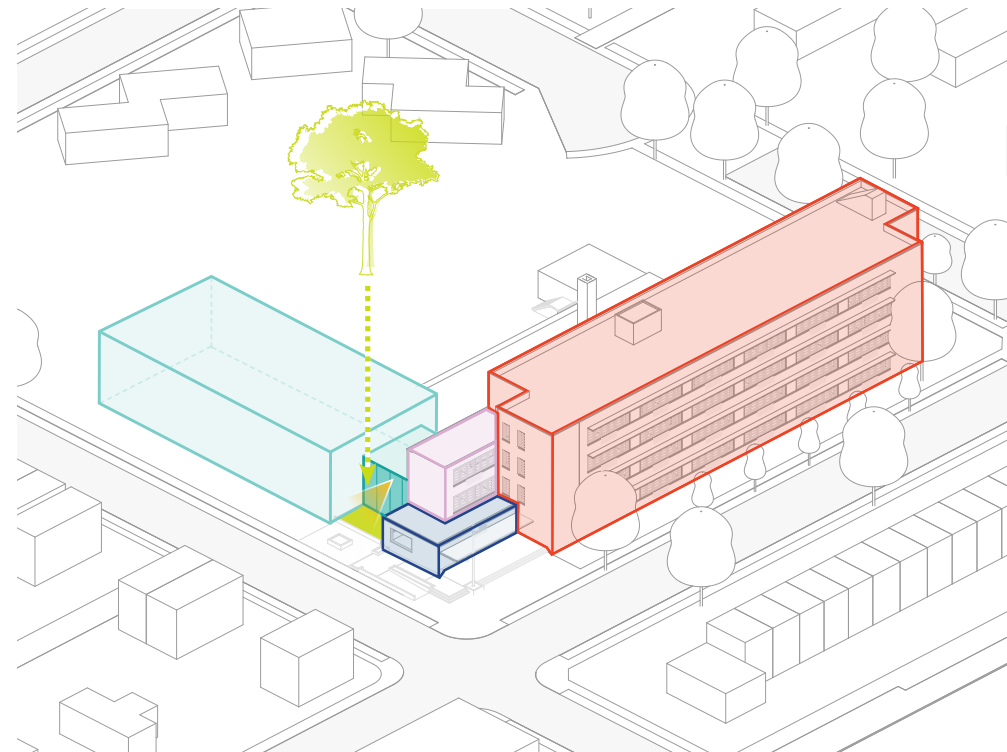
1. EXISTING CONDITIONS



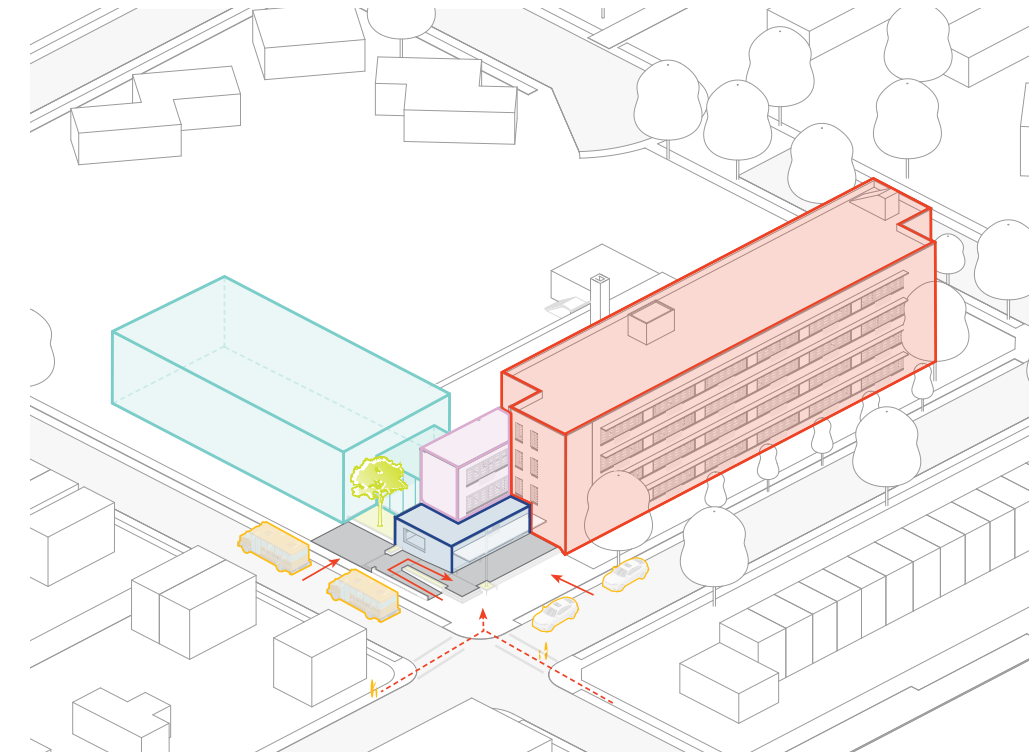
2. INCORPORATION OF NEW PROGRAM



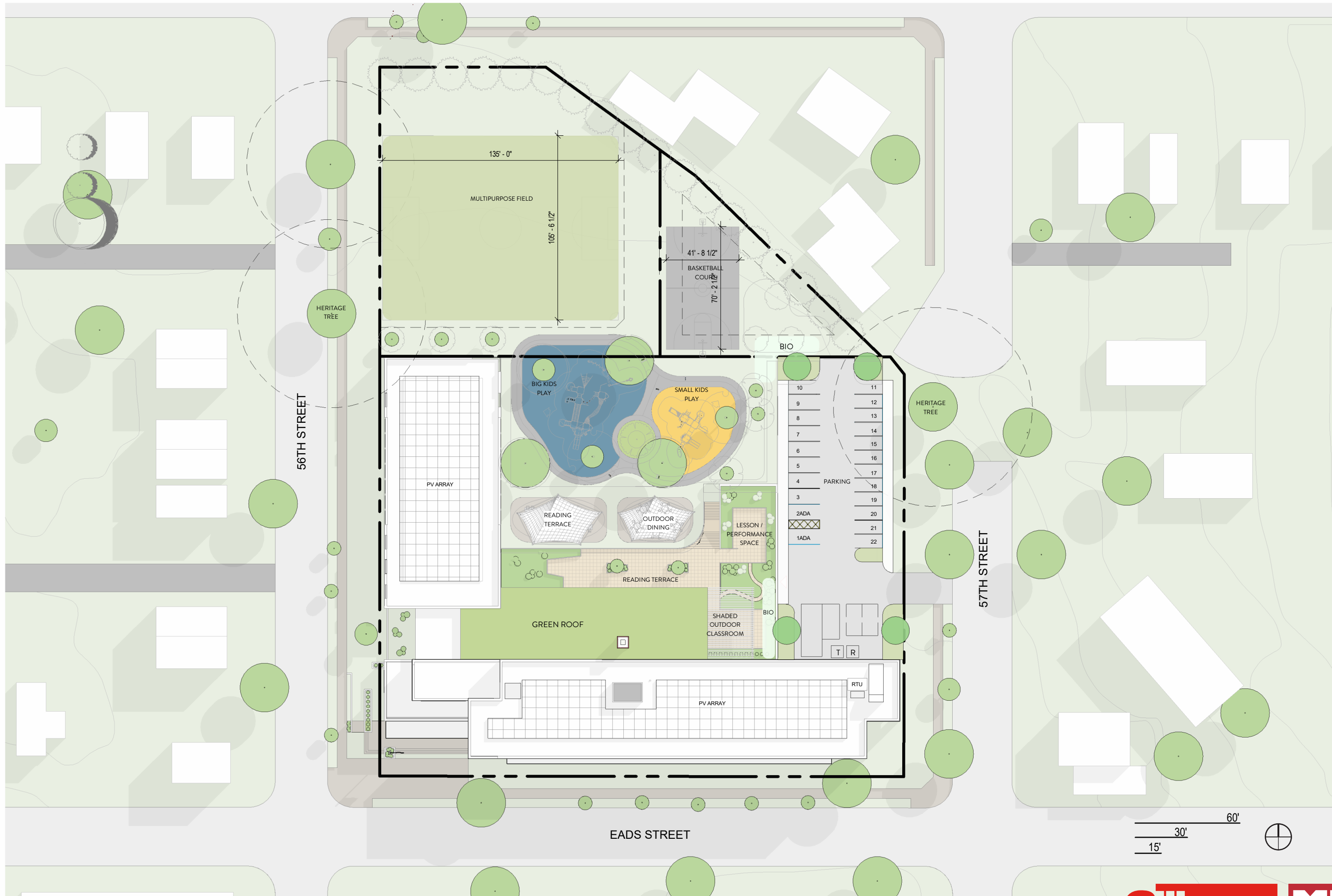
3. TRANSITION NEXUS

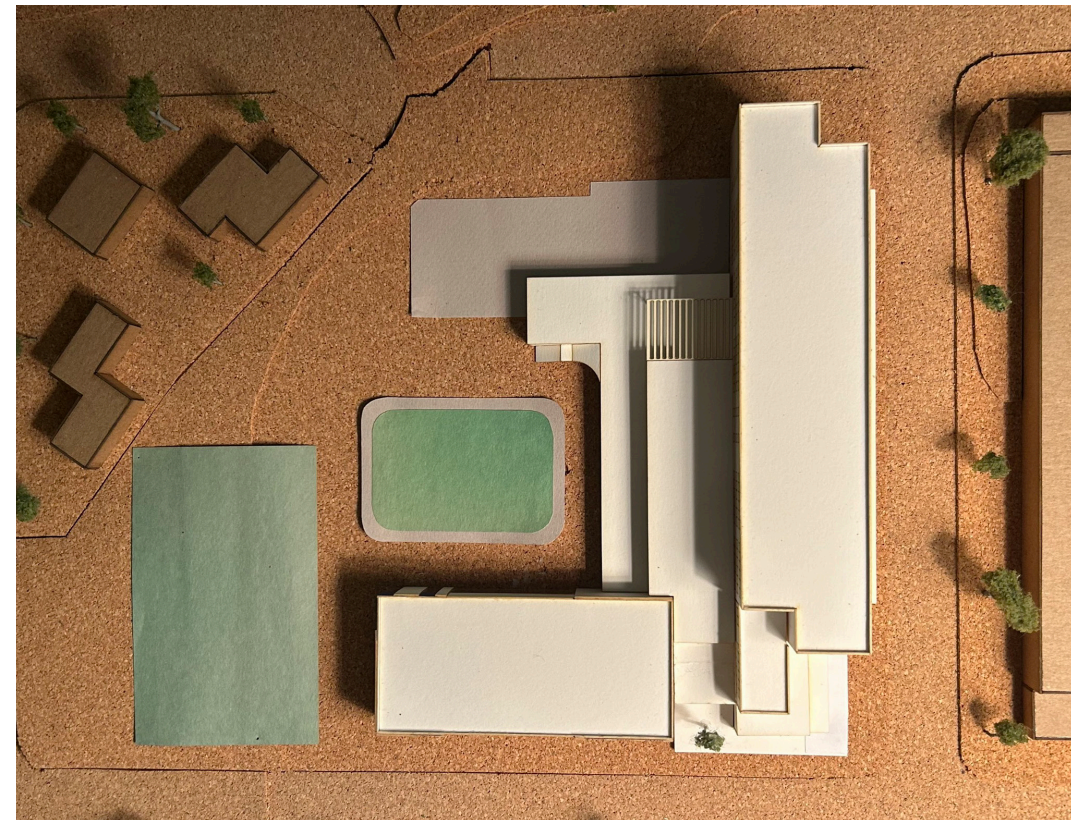
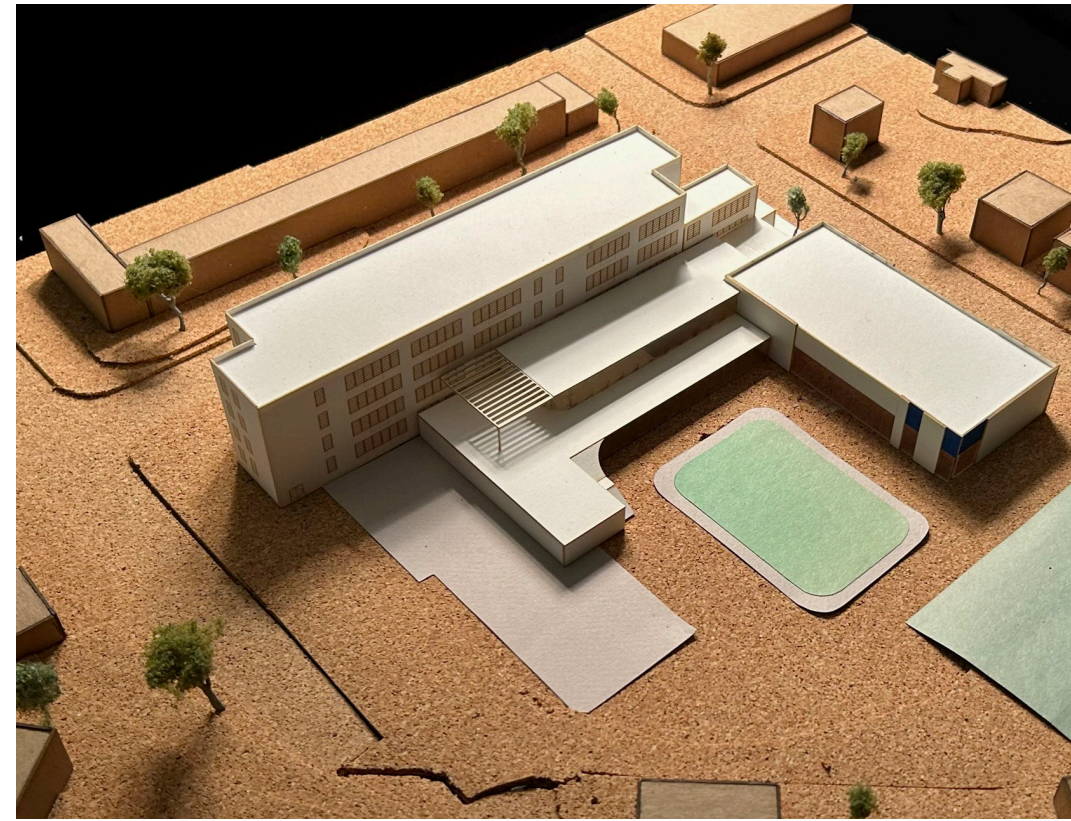
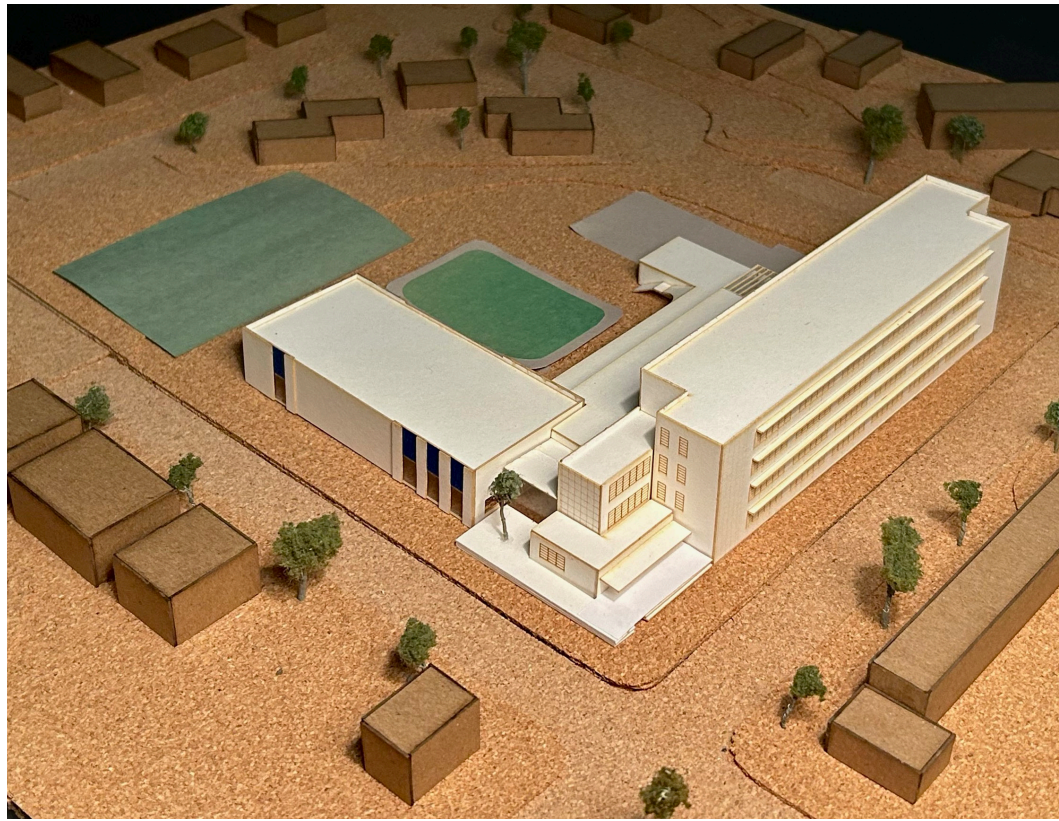


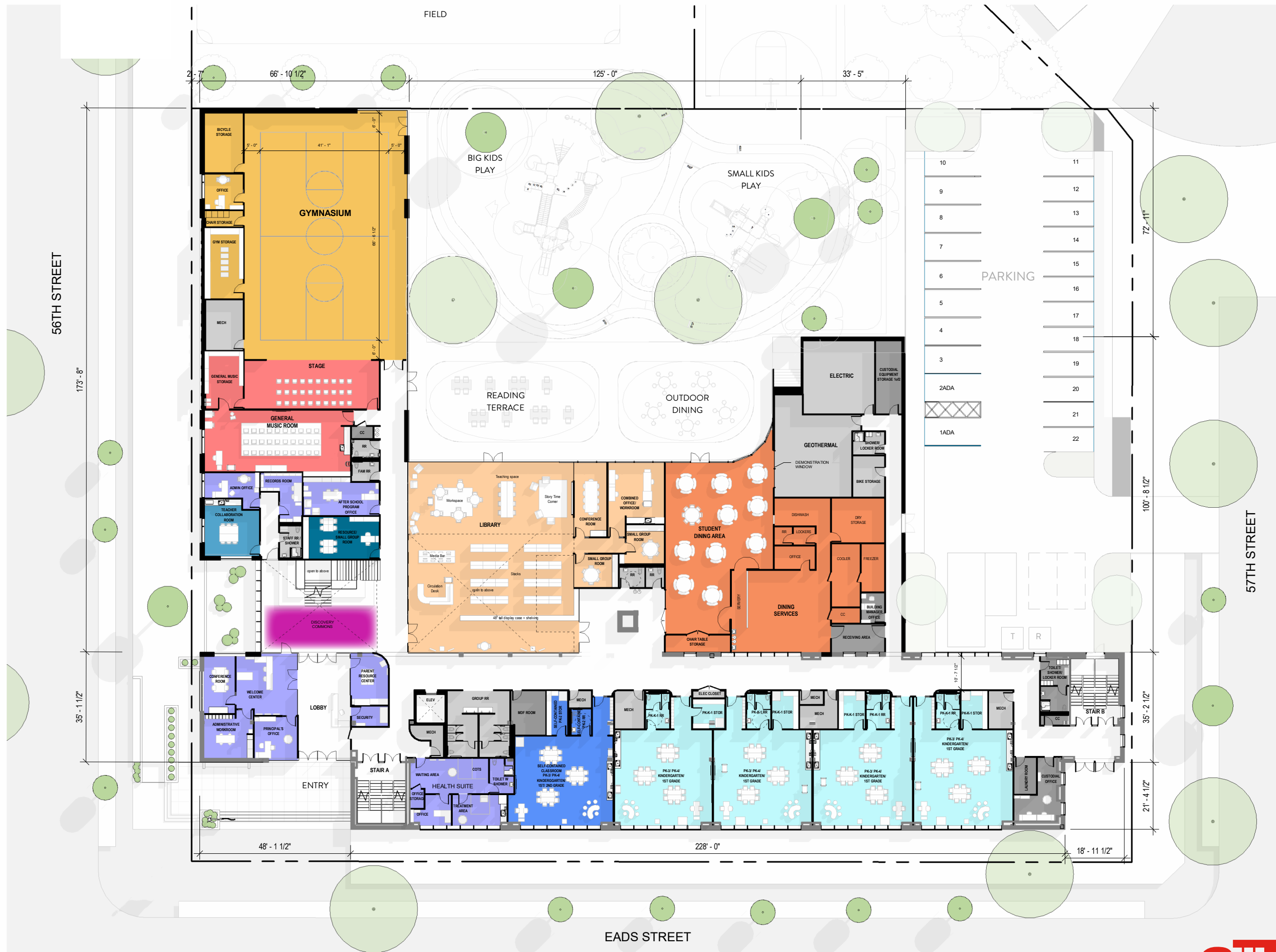
4. ACTIVATING



5. ARRIVAL

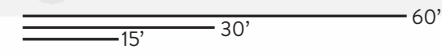






- GYM
- DINING
- PERFORMING ARTS
- VISUAL ARTS
- ADMIN/HEALTH
- LIBRARY
- DISCOVERY COMMONS
- LABS
- SPECIALS
- PREK/K/1 CLASSROOMS
- 2-5 CLASSROOMS
- SELF-CONTAINED
- OUTDOOR CLASSROOM
- BOH

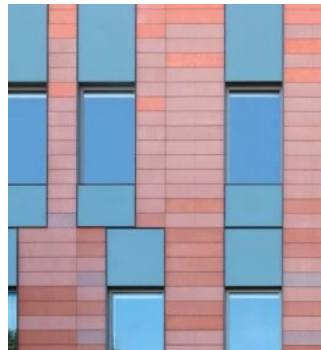
**1 LEVEL 1 FLOOR PLAN**







SHADED GLASS SLOT



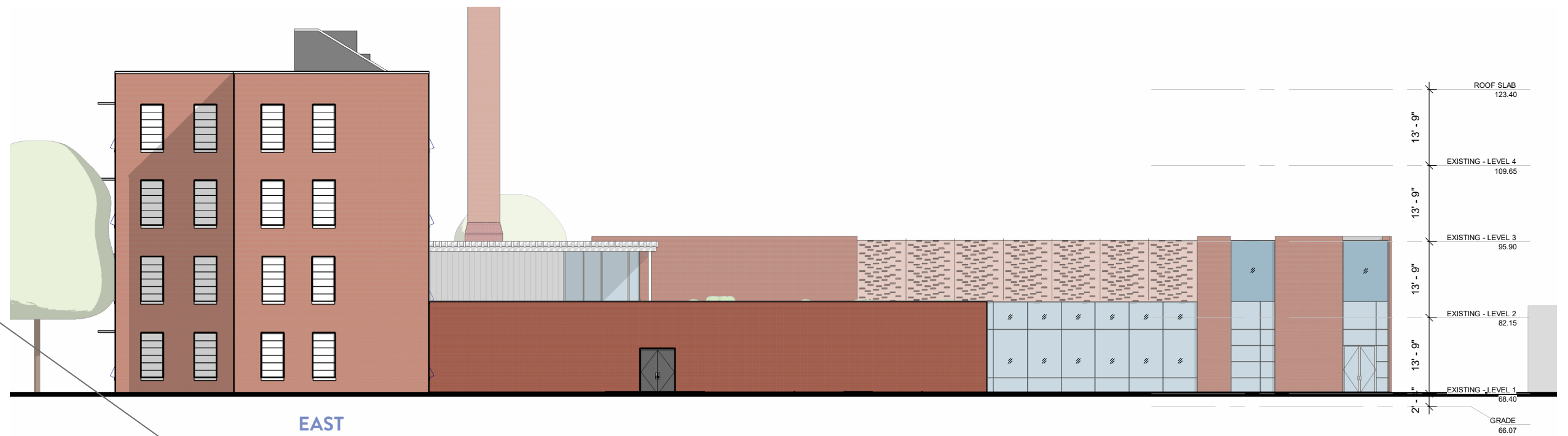
PUNCH FENESTRATIONS



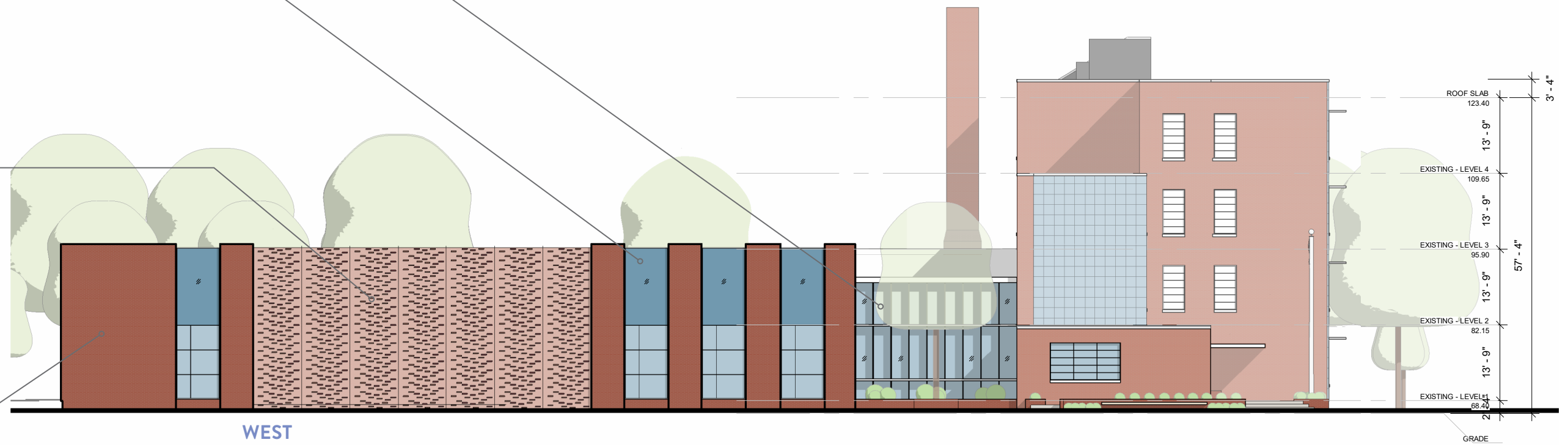
TEXTURED BRICK



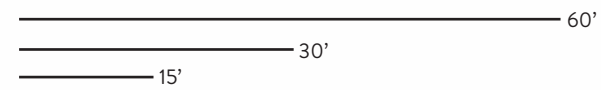
CONTRASTING COLOR BRICK



EAST

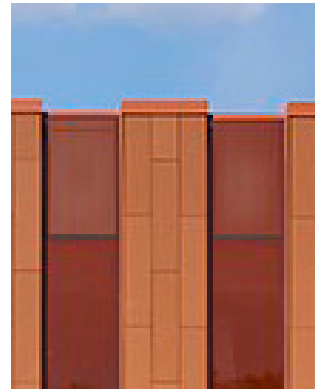


WEST





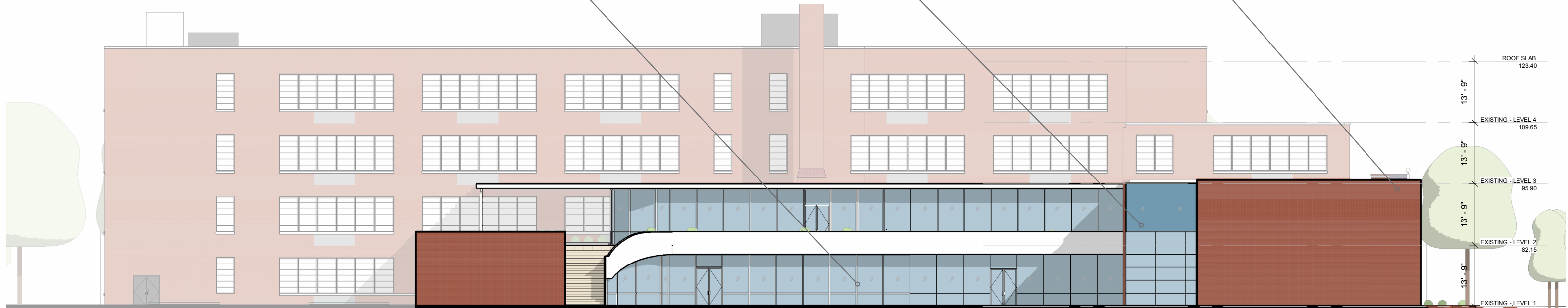
GLASS + METAL PANEL OPEN COURTYARD



SPANDREL GLASS



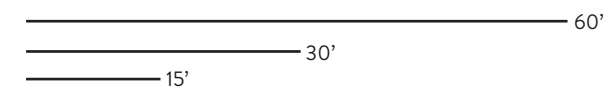
CONTRASTING COLOR BRICK

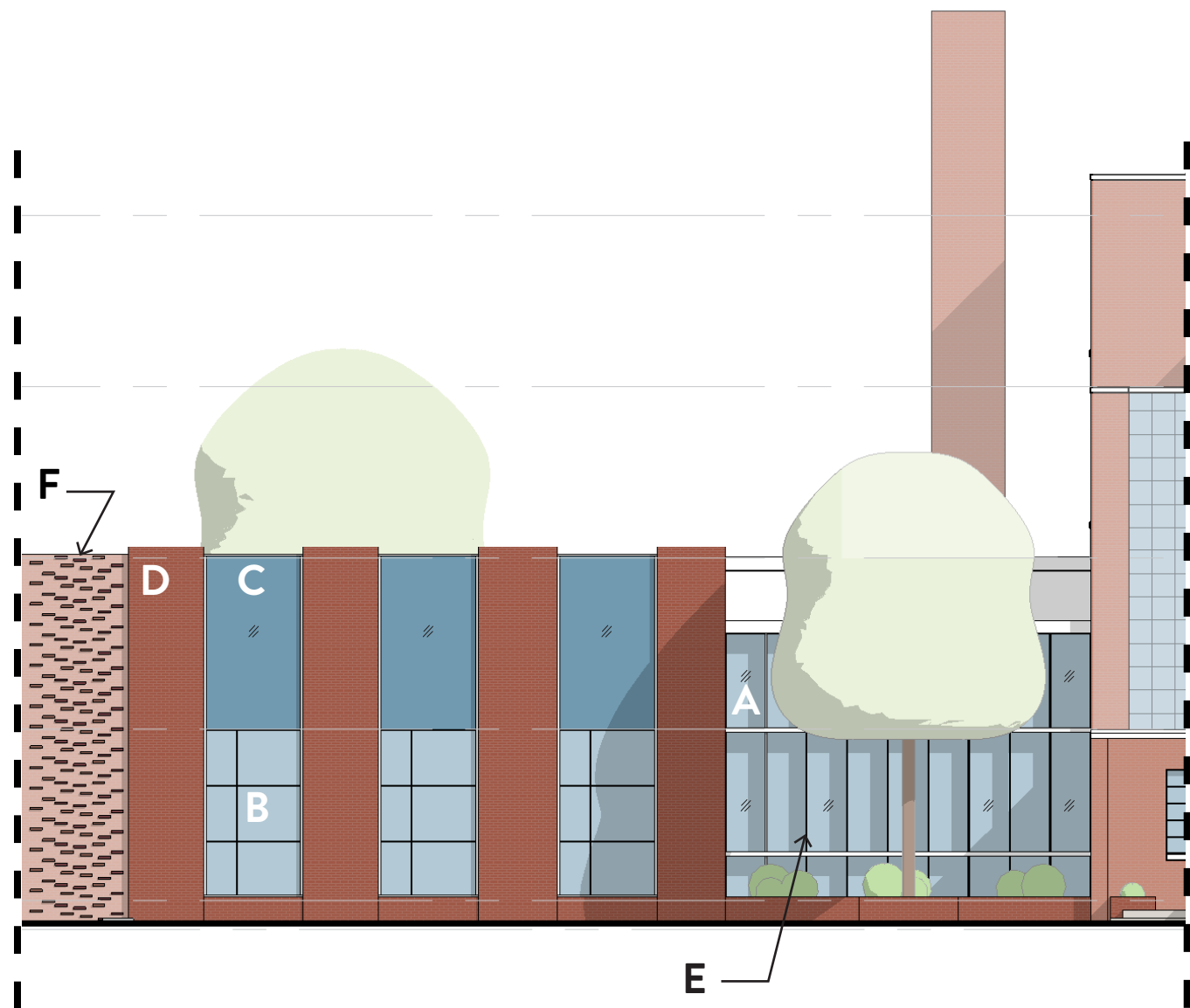
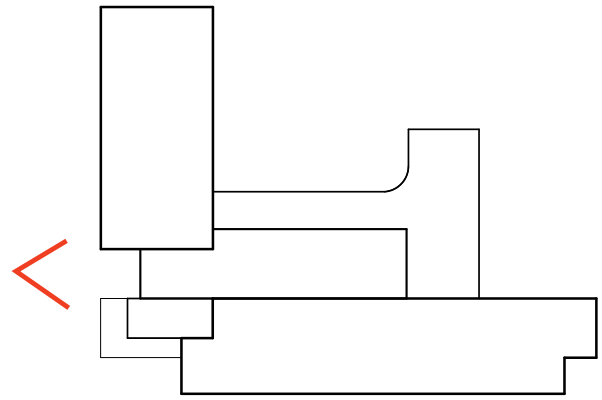


NORTH

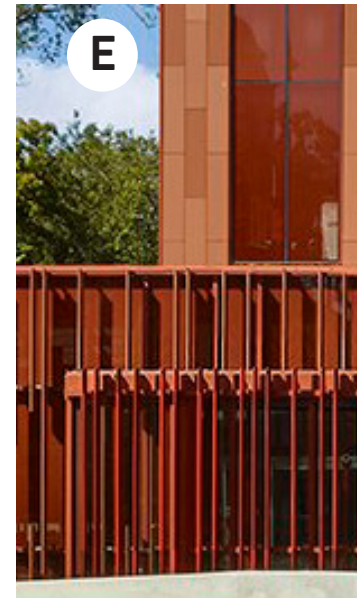


SOUTH

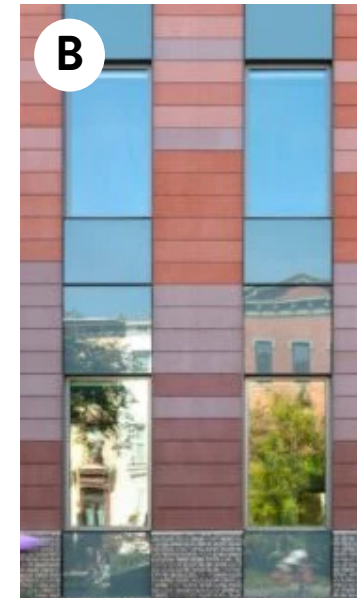




A  
TRANSPARENT GLASS



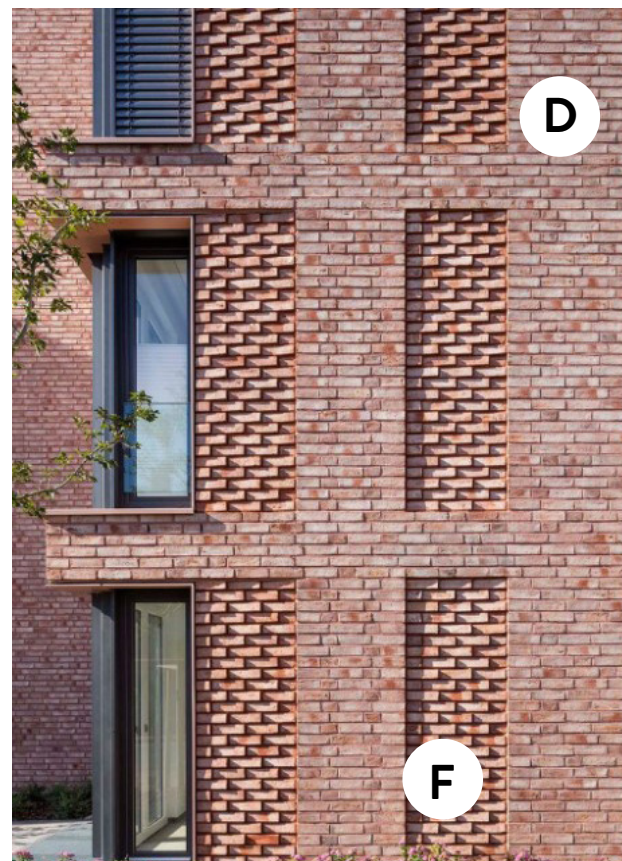
E  
SUN SHADE SYSTEM



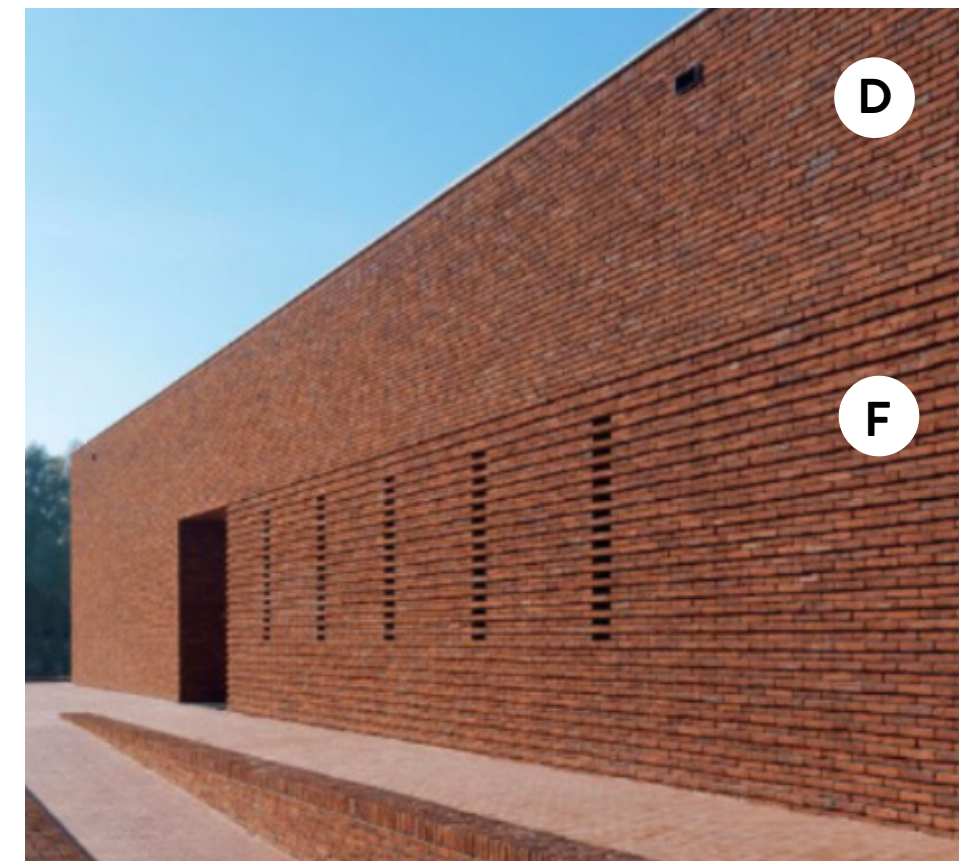
B  
PUNCH FENESTRATION



C  
SPANDREL GLASS



D  
F  
TEXTURED BRICK PATTERN + SMOOTH BRICK PATTERN IN A CONTRASTING COLOR





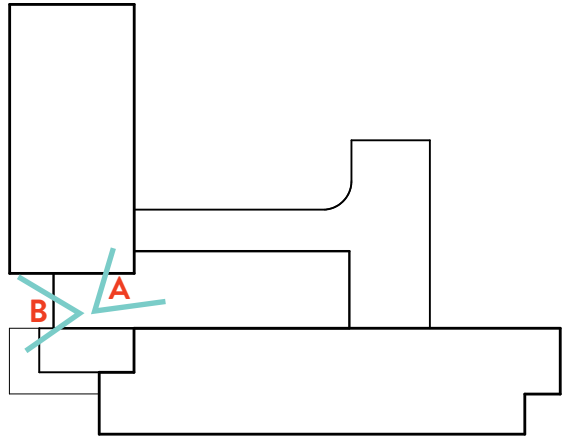
ENTRANCE - VIEW FROM 56TH AND EADS CORNER



GYM AND WEST BAR - VIEW FROM 56TH STREET LOOKING SOUTH



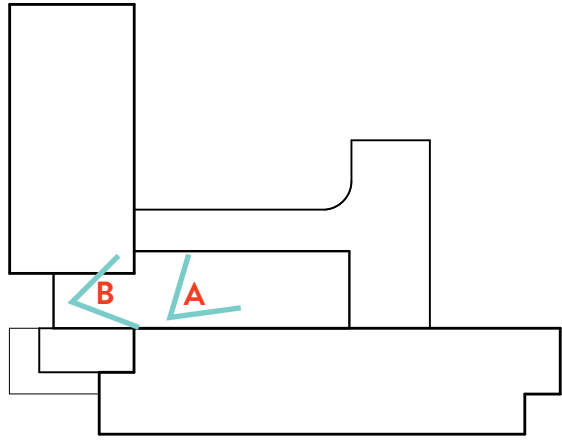
GLASS BOX - VIEW FROM 56TH STREET LOOKING EAST



**A** \_ LEVEL 1 - DC STAIRS



**B** \_ GLASS BOX - VIEW FROM DISCOVERY COMMONS LOOKING WEST



A \_ LEVEL 1 - LIBRARY



B \_ LEVEL 2 - LIBRARY





COURTYARD - VIEW FROM FOOTE ST



READING TERRACE



OUTDOOR CLASSROOM

3

LANDSCAPE ARCHITECTURE





PHOTO OF EXISTING SCHOOL FRONT

3 LANDSCAPE ARCHITECTURE: SITE ANALYSIS

LEGEND:

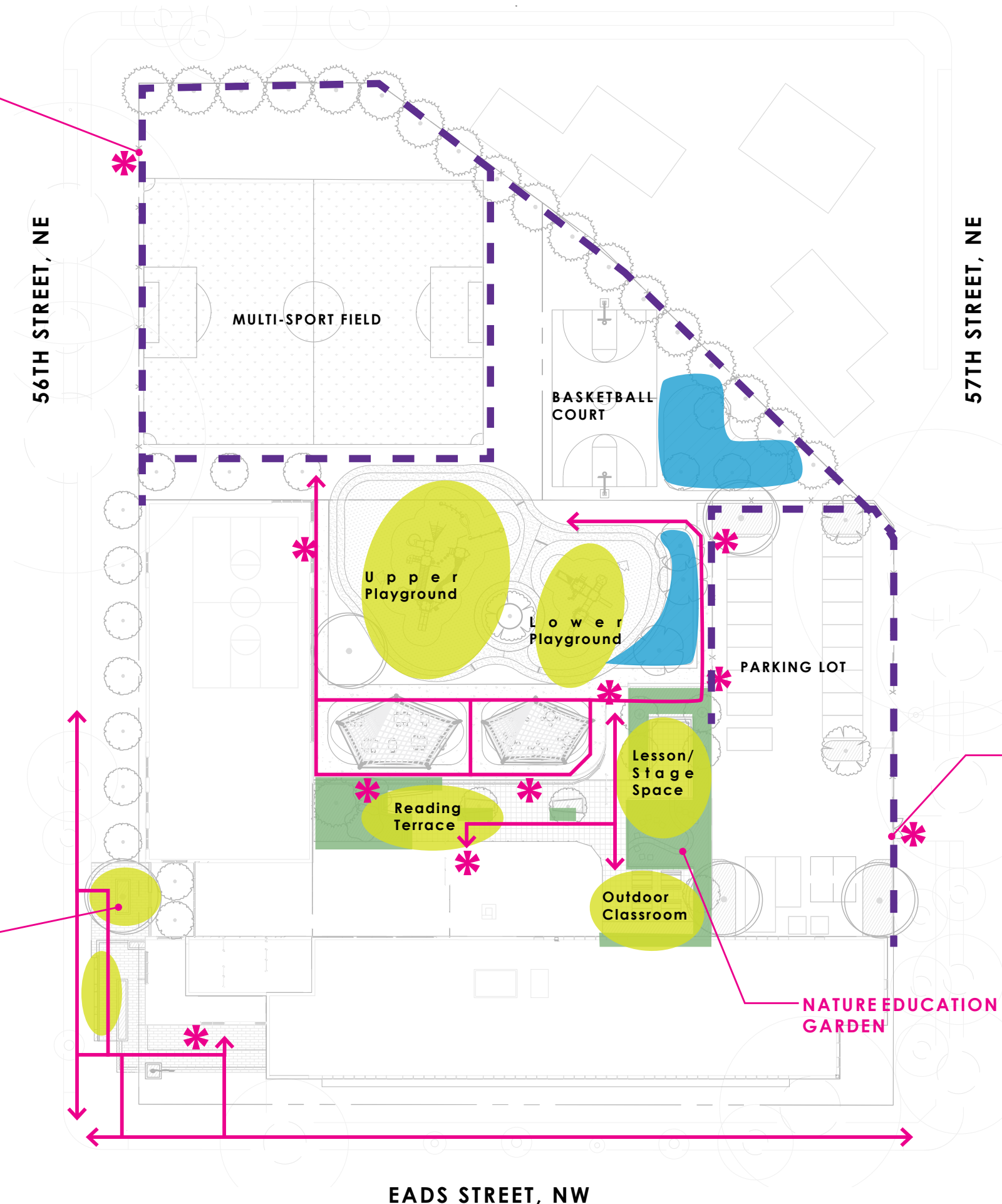
- ENTRYWAYS \* (pink asterisk)
- BIORETENTION (blue oval)
- GREEN ROOF (green oval)
- PROGRAMMED SPACE (yellow oval)
- 8FT FENCE (dashed purple line)

GATHERING SPACES AT ENTRY

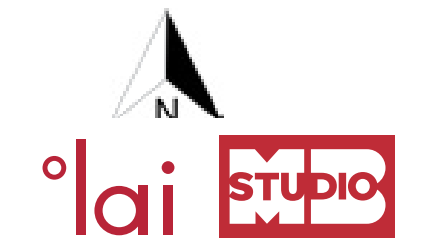
GATE

GATE

NATURE EDUCATION GARDEN



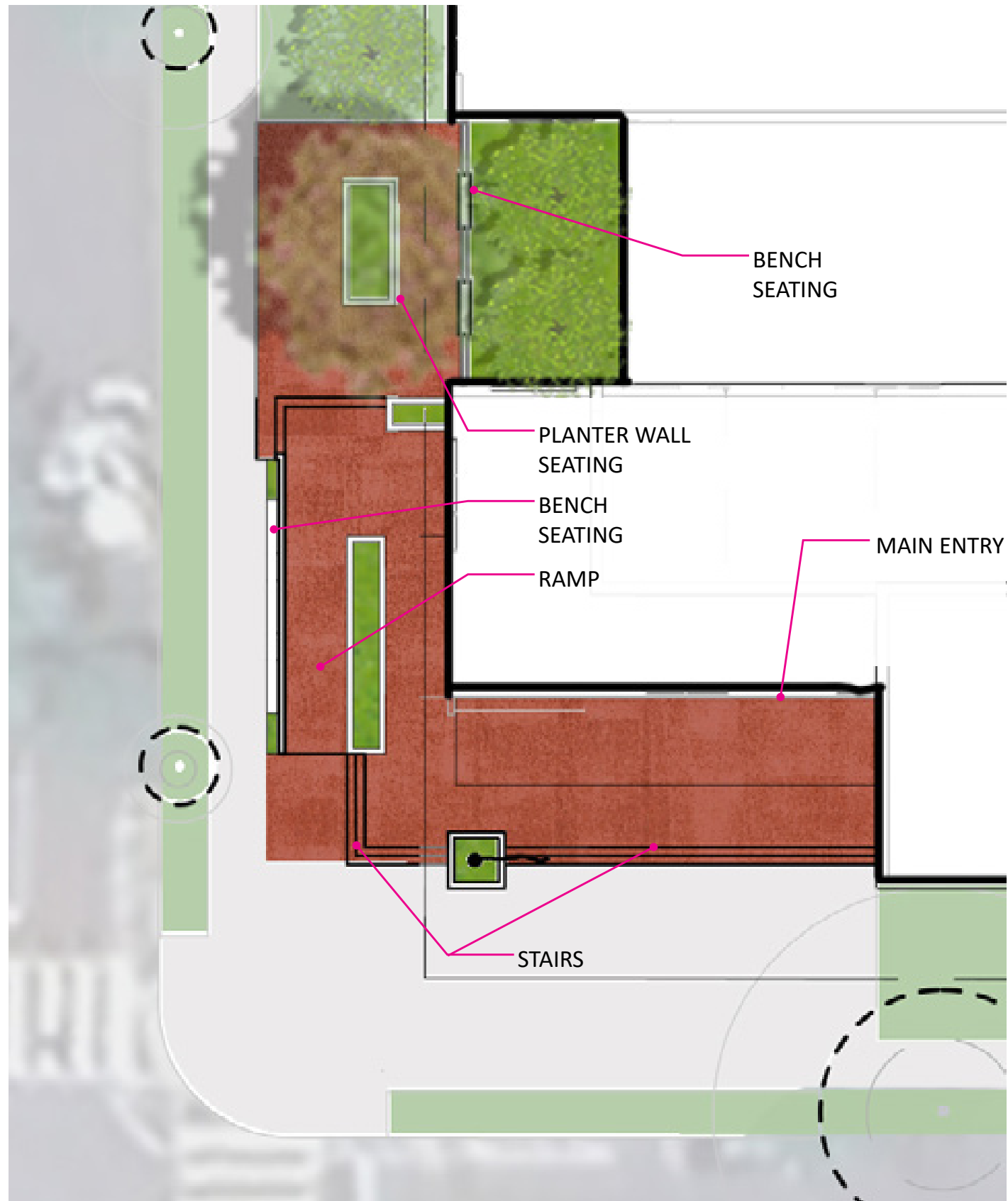
3 LANDSCAPE: PROGRAMMING, CIRCULATION & FENCING



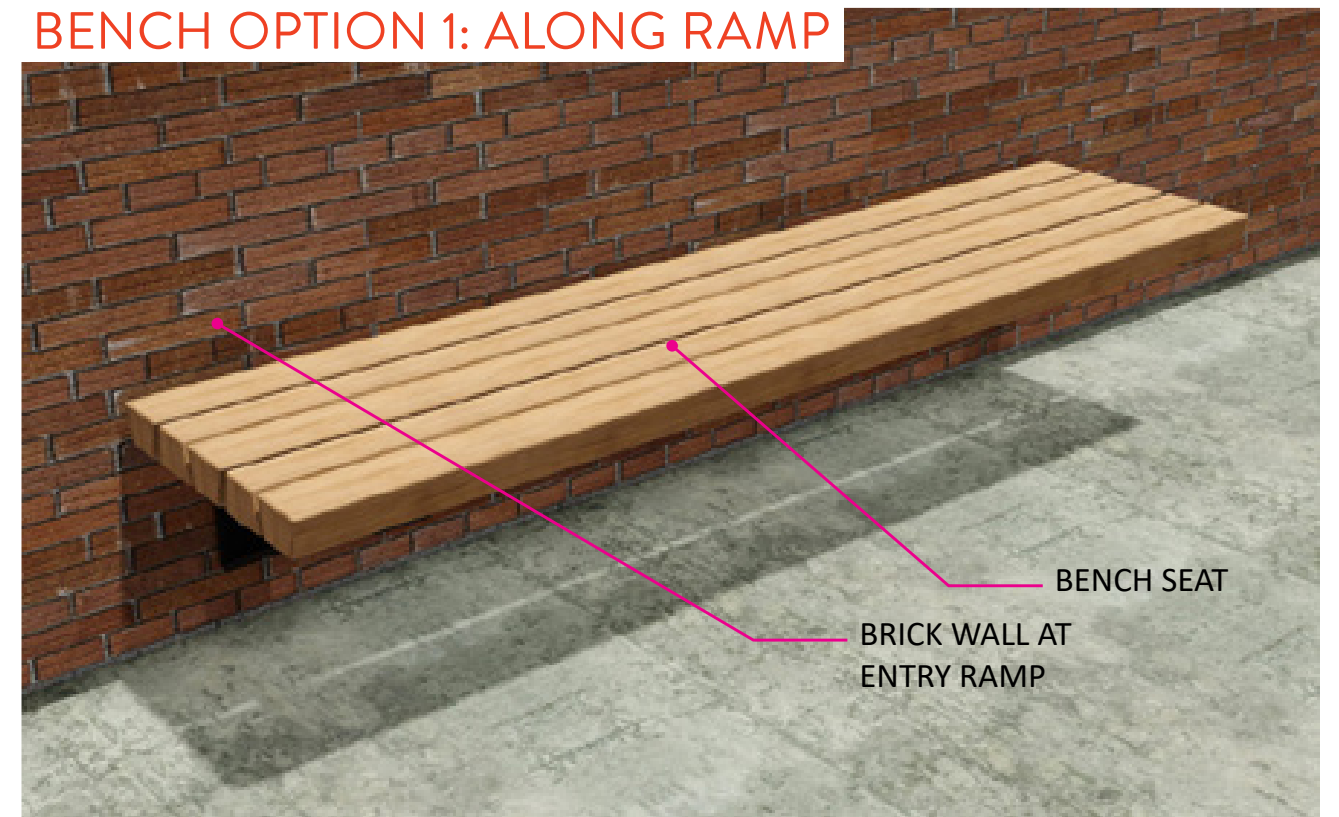


### 3 LANDSCAPE: REFERENCE SITE PLAN





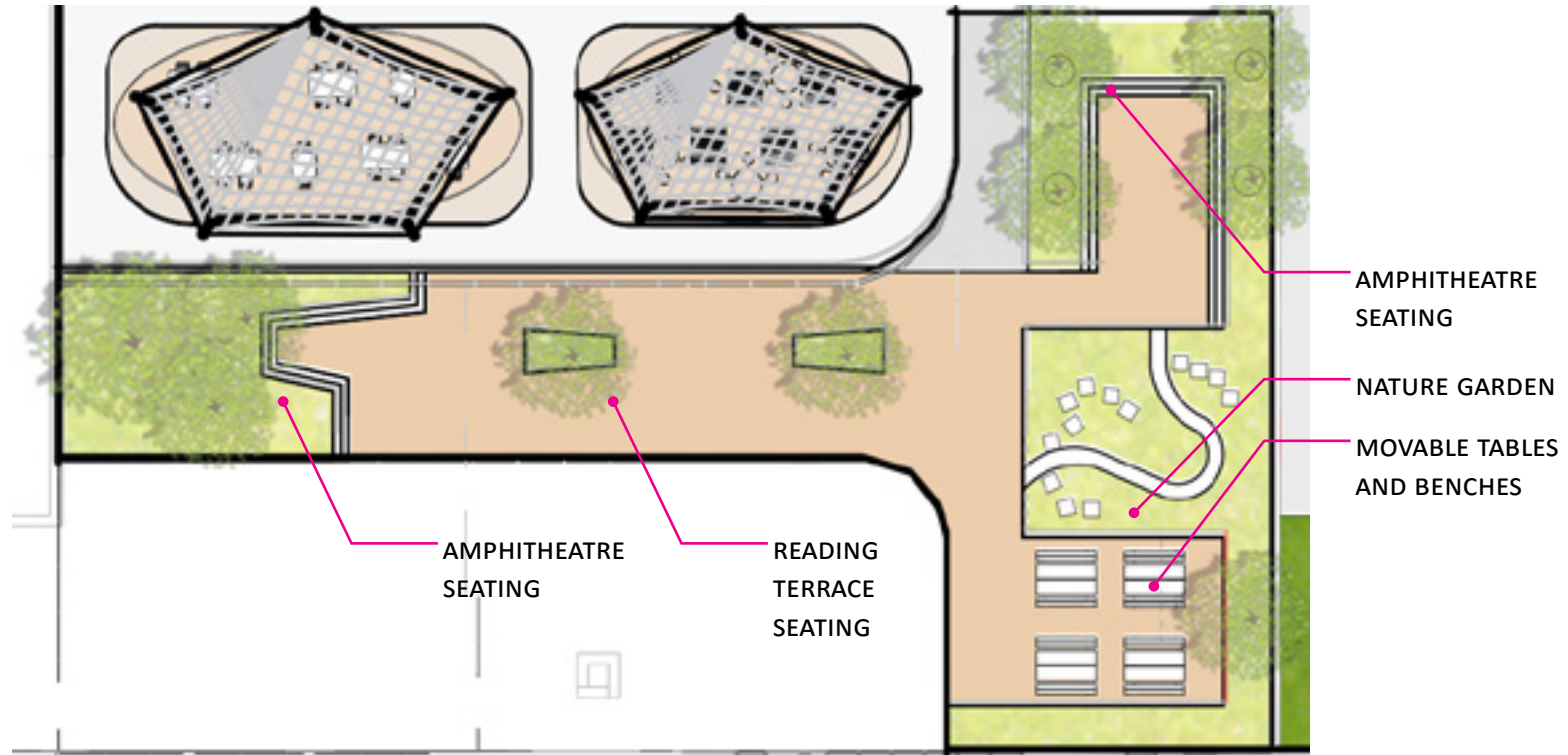
BENCH OPTION 1: ALONG RAMP



BENCH OPTION 2: TREE PLANTER







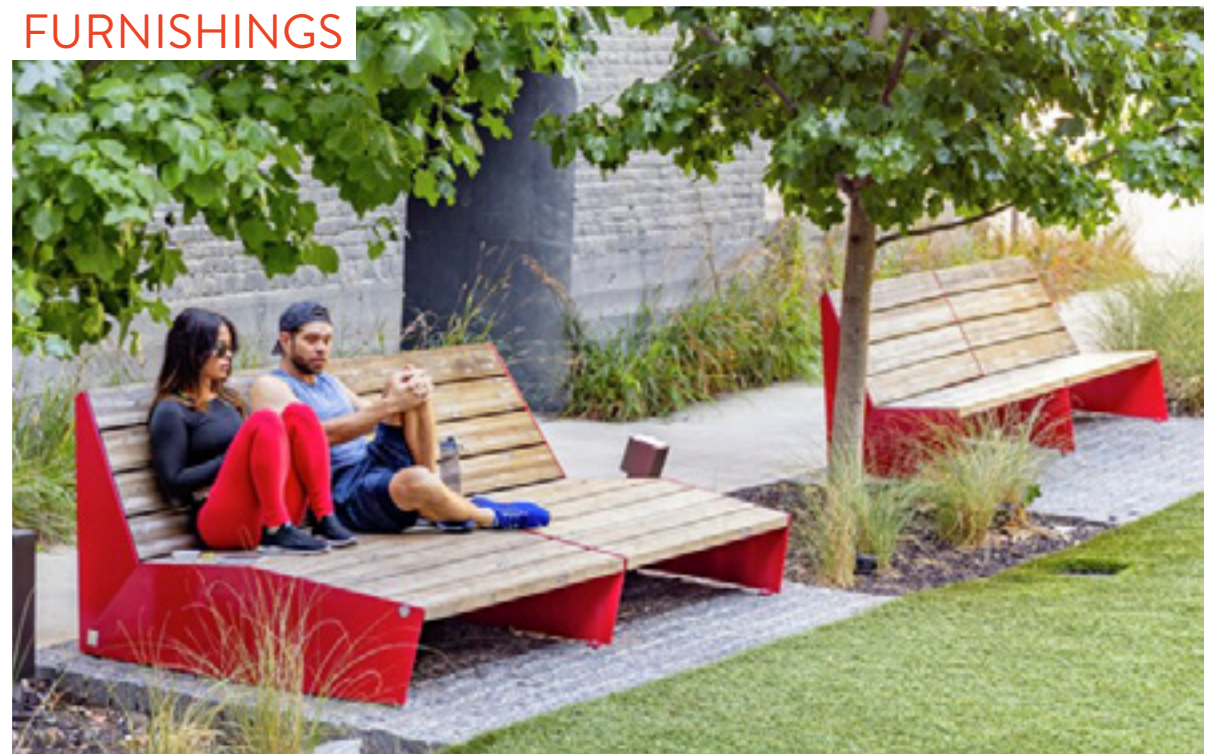
AMPHITHEATRE SEATING



OUTDOOR CLASSROOM SEATING



FURNISHINGS





**PAVING**



**SYNTHETIC TURF**



**PERMEABLE P.I.P RUBBER SURFACE**



**8 FT PERIMETER FENCE**



**OPTIONAL COLORED SPORTS COURT SURFACING**



**BRICK**

### **3 LANDSCAPE: MATERIAL REFERENCES**



*Betula nigra* - River Birch



*Chionanthus virginicus* - White Fringetree



*Cladrastis kentukea* - American Yellowwood



*Cornus florida* 'Appalachain Spring' - Appalachain Spring Dogwood



*Juniperus virginicus* - Eastern Red Cedar



*Magnolia virginiana* - Sweetbay Magnolia



*Quercus phellos* - Willow Oak



*Taxodium ascendens* - Pond Cypress



*Bioretention Planting*



*Entry Planting*



*Planting Courtyard*



*Pollinator Garden / Nature Exploration*



*Reading Terrace*

### 3 LANDSCAPE: SHRUB & GROUND COVER GROUPINGS