



U.S. Commission of Fine Arts Meeting

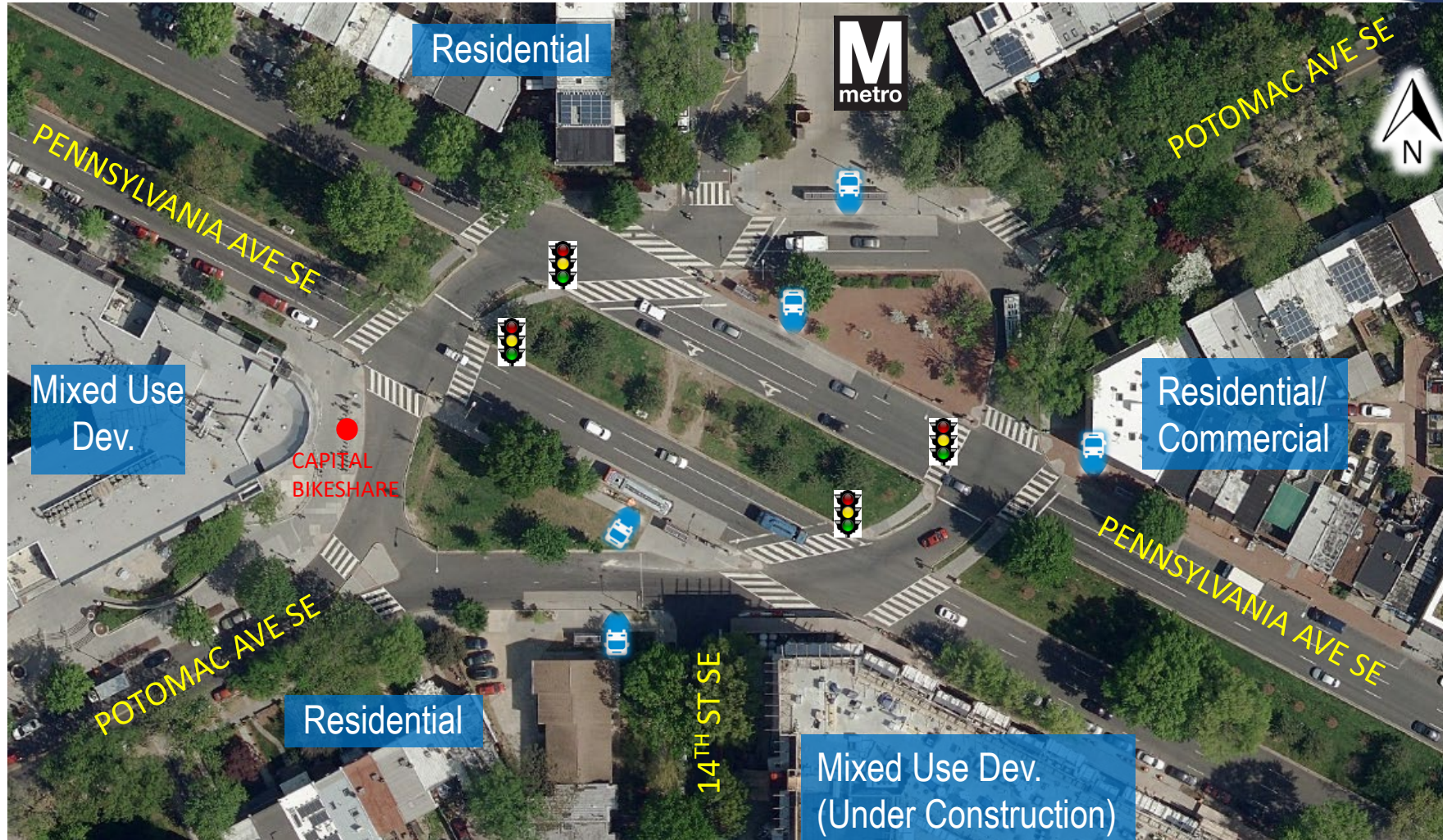
Pennsylvania and Potomac Avenues SE
Intersection Improvement Project

30% Design Update for CFA Concept Approval

Thursday July 16, 2020

d.

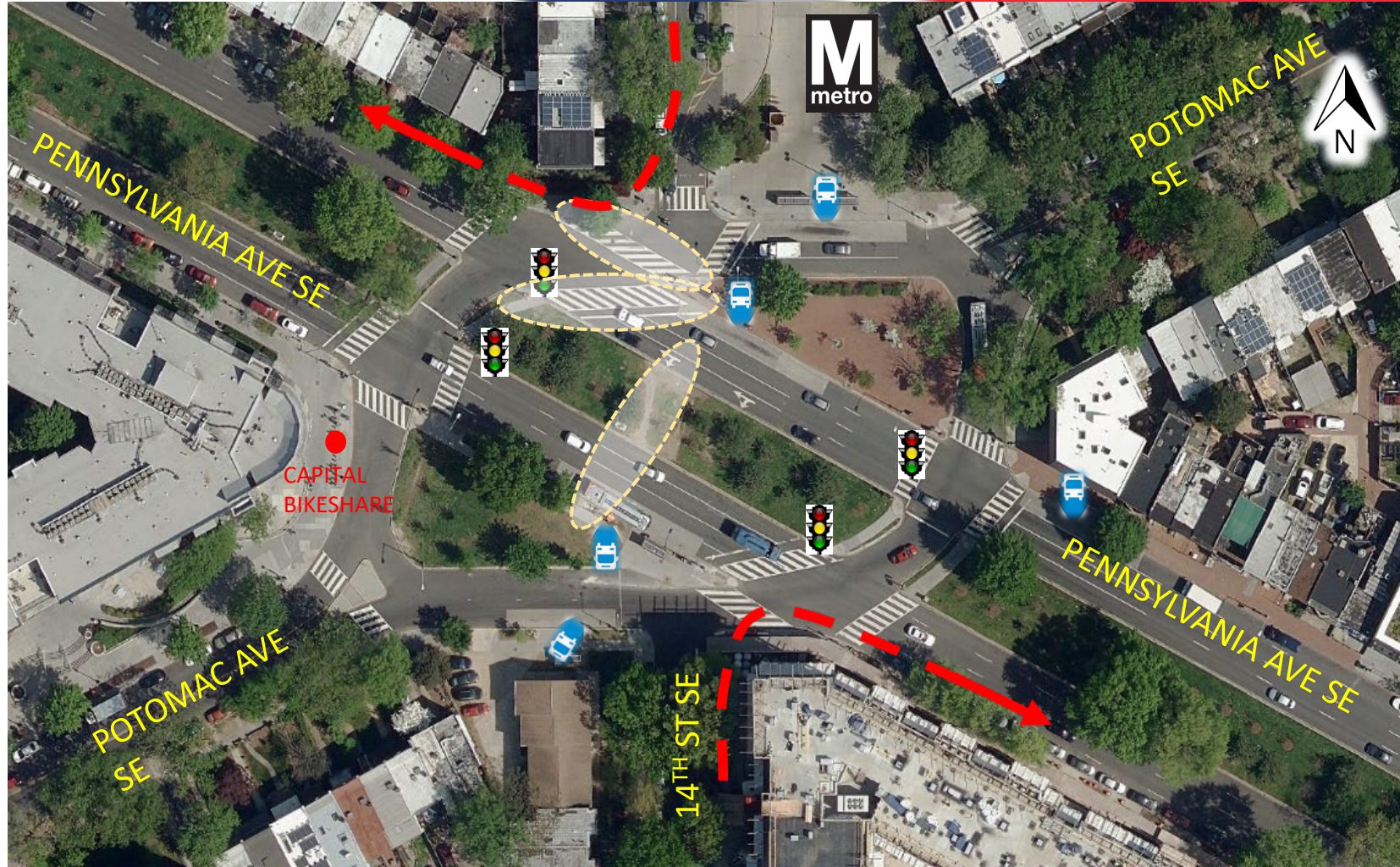
Project Area



Existing Conditions

Main Issues

- Pedestrian network is indirect and incomplete
- Intersections are closely spaced with confusing and inconsistent traffic controls
- Several conflict points due to vehicles merging and diverging



Proposed Improvements- Preferred Alternative-Ellipse Park

- Environmental Assessment (EA) and Finding of No Significant Impact (FONSI), approved September 2017
- Preferred alternative per FONSI is The Ellipse Park
- The preferred alternative consist of the creation of signalized elliptical traffic circle



Proposed Improvements- 30% Design Update of Ellipse Park

- Refined ellipse geometry based on data collected
- Made minor adjustments to curb return geometry to accommodate buses and trucks
- Refined public and green space
- Minor shifts of pedestrian pathways and crosswalks to create a more direct path



Proposed Improvements- 30% Design Update of Ellipse Park

- Traffic Signal Design (pole locations)
- Signing & Pavement Marking
- Stormwater Management Facilities
- Storm Sewer Reconstruction
- Landscape Treatments
- Street Lighting Upgrades from oval to Barney Circle SE



Project Next Steps

➤ Complete Preliminary (30%) Design	Completed May 2020
➤ Complete Intermediate (65%) Design	Fall 2020
➤ Complete 90% Design	Winter 2020/21
➤ 100% Final Design	Summer 2021
➤ Estimated Construction Start	Spring 2022
➤ Anticipated Construction Duration	18 Months

Contact Information

Morvarid Ganjalizadeh- DDOT

Phone : 202-299-3896

Email: morvarid.ganjalizadeh@dc.gov

Redeat Lodamo, P.E. – Brudis & Associates, Inc.

Phone : 410-884-3607

Email: rlodamo@brudis.com



d. delivers

district department of transportation