

PROPOSED FACADE

BLACK FACE BRICK, TYP.

12" METAL SIGNAGE
BRUSHED BRONZE
PAINTED WOOD CORNICE,
TRIM
GOOSENECK SCONCE

TRANSOM WINDOWS

WOOD DOOR w/ BRASS
HARDWARE



THE AVERY HOTEL BAR

2616 P STREET NW



THE AVERY HOTEL BAR

BAR ADDITION + INTERIOR RENOVATION
OLD GEORGETOWN BOARD US COMMISSION OF FINE ARTS
FEBRUARY 4, 2021

EASTWING
ARCHITECTS

VICINITY MAP

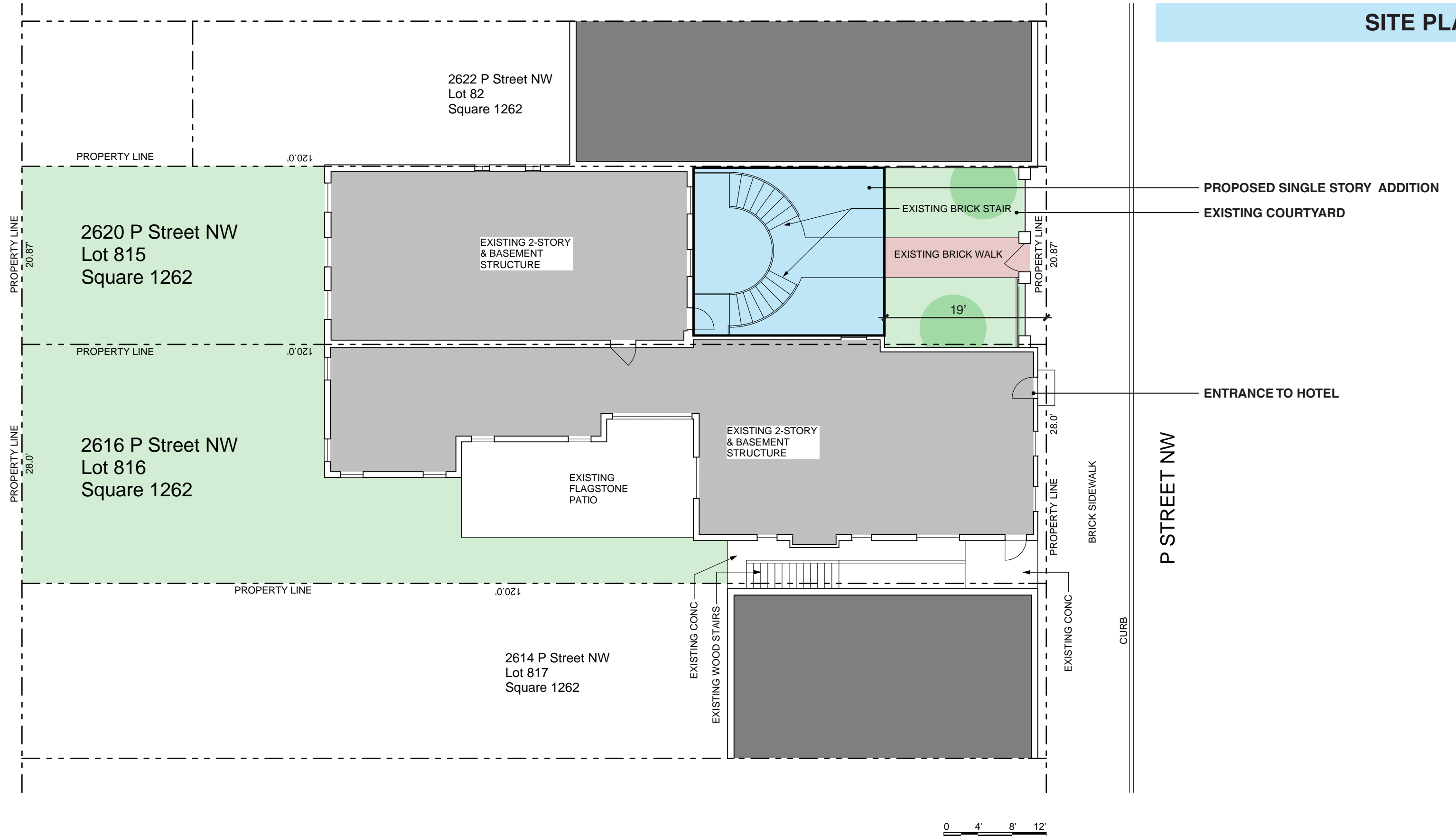


THE AVERY HOTEL BAR

BAR ADDITION + INTERIOR RENOVATION
OLD GEORGETOWN BOARD OF COMMISSION OF FINE ARTS
FEBRUARY 4, 2021



SITE PLAN



THE AVERY HOTEL BAR

BAR ADDITION + INTERIOR RENOVATION
OLD GEORGETOWN BOARD US COMMISSION OF FINE ARTS
FEBRUARY 4, 2021

EASTWING

ARCHITECTS



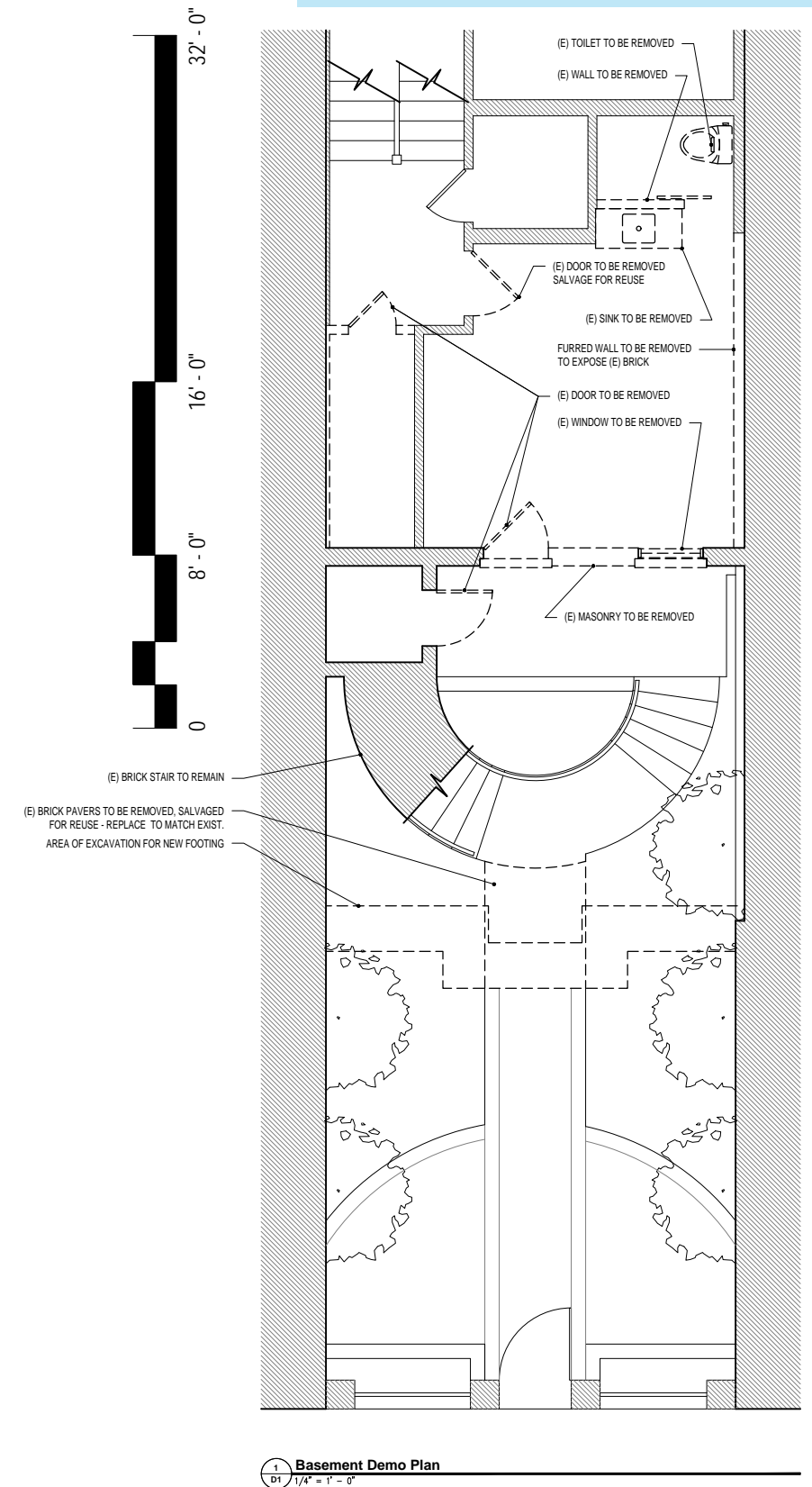
THE AVERY HOTEL BAR

BAR ADDITION + INTERIOR RENOVATION
OLD GEORGETOWN BOARD US COMMISSION OF FINE ARTS
FEBRUARY 4, 2021

EASTWING
ARCHITECTS



EXISTING CONDITIONS



THE AVERY HOTEL BAR

BAR ADDITION + INTERIOR RENOVATION
OLD GEORGETOWN BOARD US COMMISSION OF FINE ARTS
FEBRUARY 4, 2021

EASTWING
ARCHITECTS

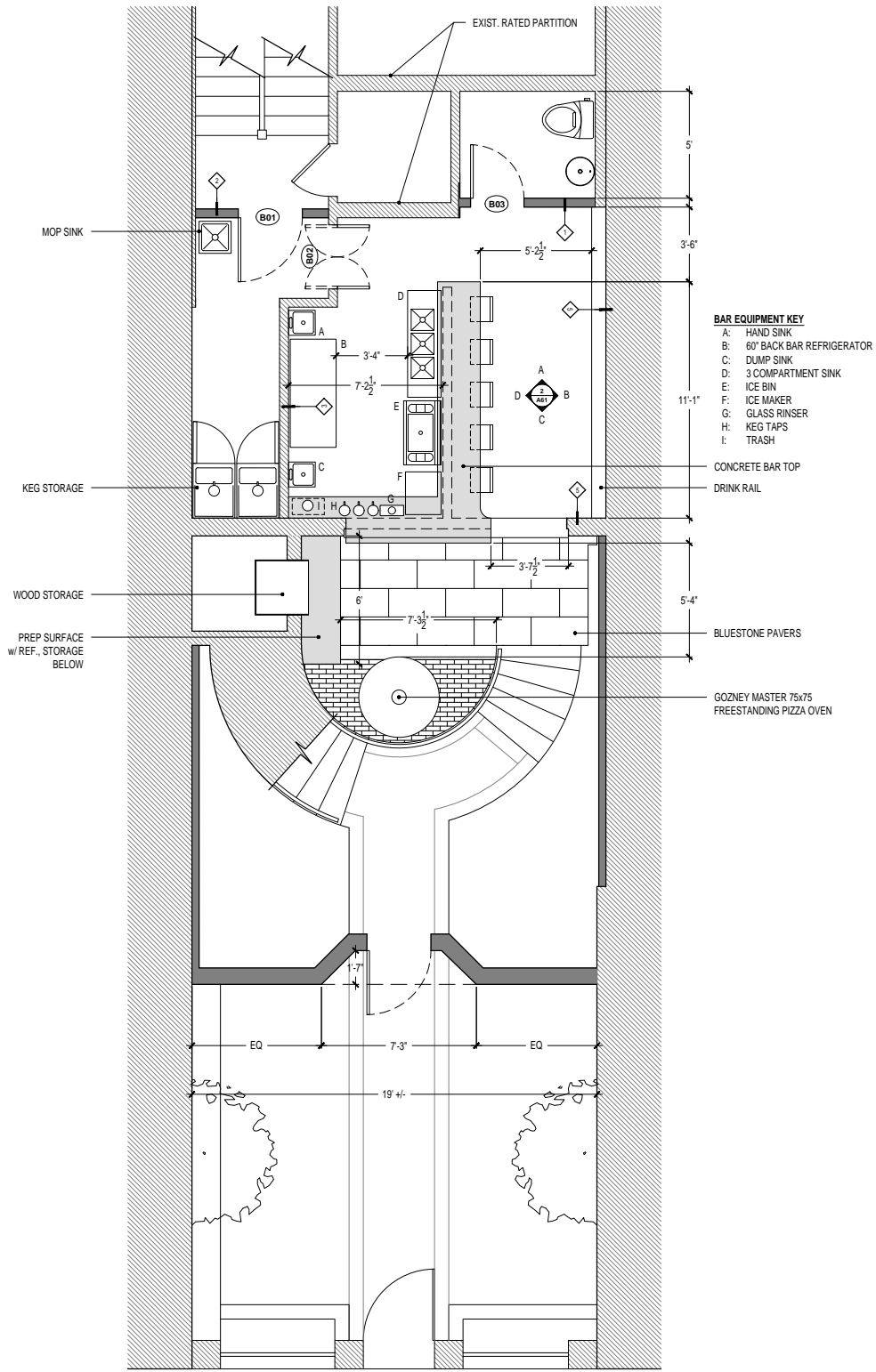
EXISTING CONDITIONS
INTERIOR



THE AVERY HOTEL BAR

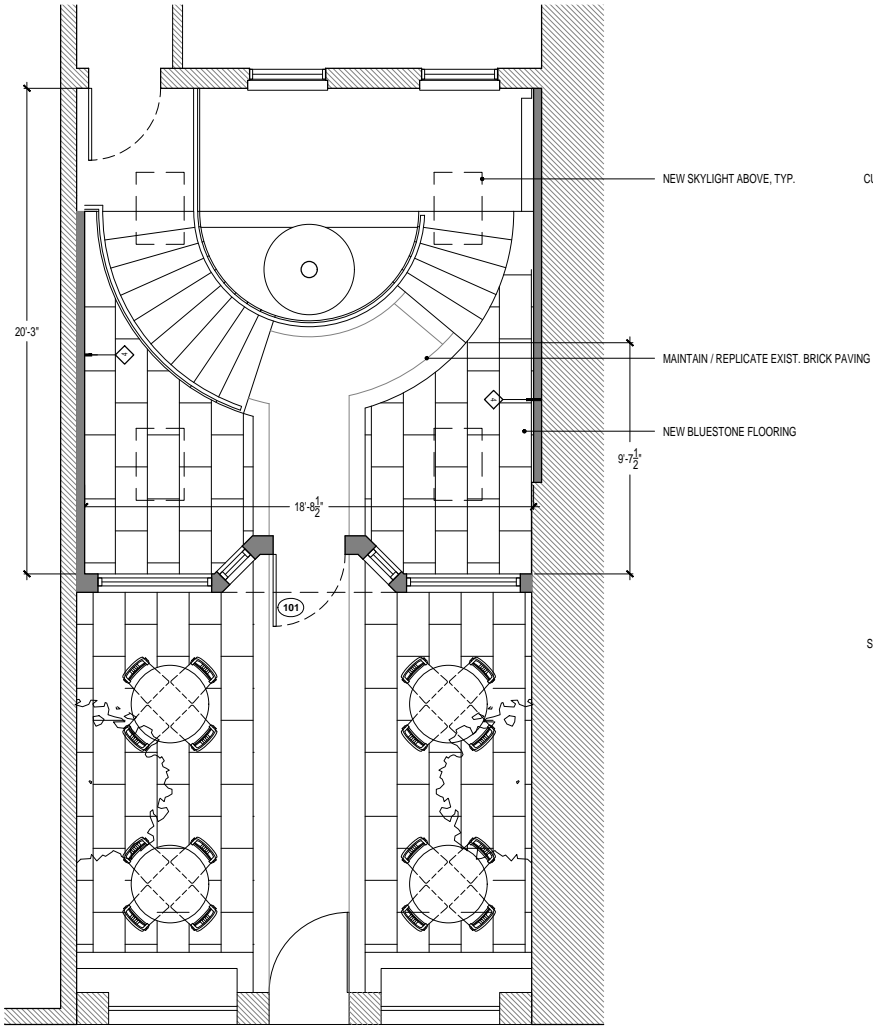
BAR ADDITION + INTERIOR RENOVATION
OLD GEORGETOWN BOARD US COMMISSION OF FINE ARTS
FEBRUARY 4, 2021

EASTWING
ARCHITECTS

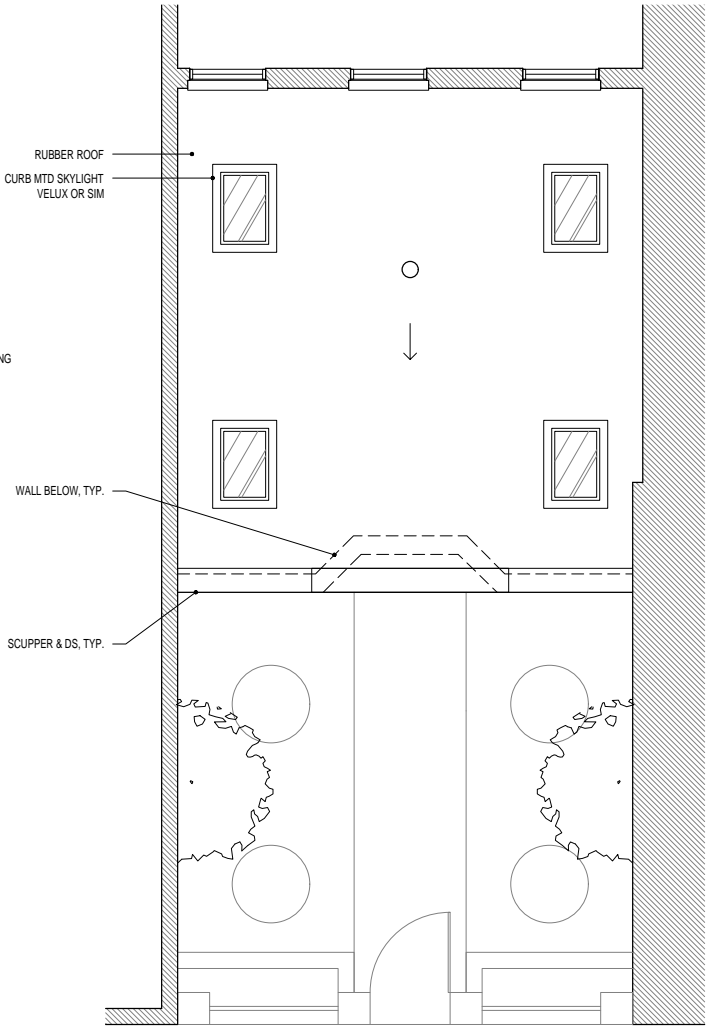


1 Floor Plan - Basement
A1 1/4" = 1' - 0"

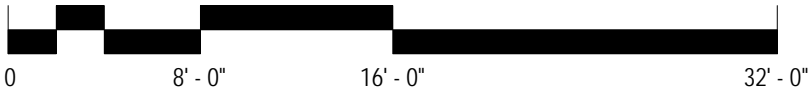
- WALL TYPES:**
- 1 1/2" GYPSUM WALL BOARD EA. SIDE
3 1/2" 25ga. STEEL STUDS @ 16" O.C.
JOINTS TAPED AND FINISHED - LEVEL 4
 - 2 1HR FIRE-RATED WALL (UL Des U419)
5/8" SHEETROCK FIRECODE CORE GWB, EA. SIDE
3 1/2" 25ga. STEEL STUDS @ 16" O.C.
JOINTS TAPED & FINISHED - LEVEL 4
 - 3 CERAMIC TILE
CEMENTITIOUS BACKER BOARD
EXIST. WALL ASSEMBLY
 - 4 1/2" PAINTED GWB - TAPED & FINISHED, BOTH SIDES
3 1/2" 25ga. STEEL STUDS @ 16" O.C.
EXIST. MASONRY
 - 5 EXPOSED BRICK
CLEANED & SEALED



2 Floor Plan - Courtyard
A1 1/4" = 1' - 0"



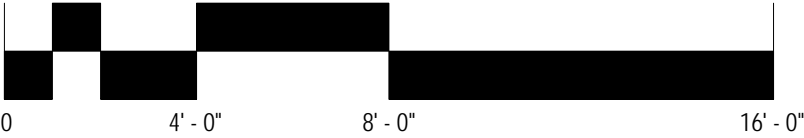
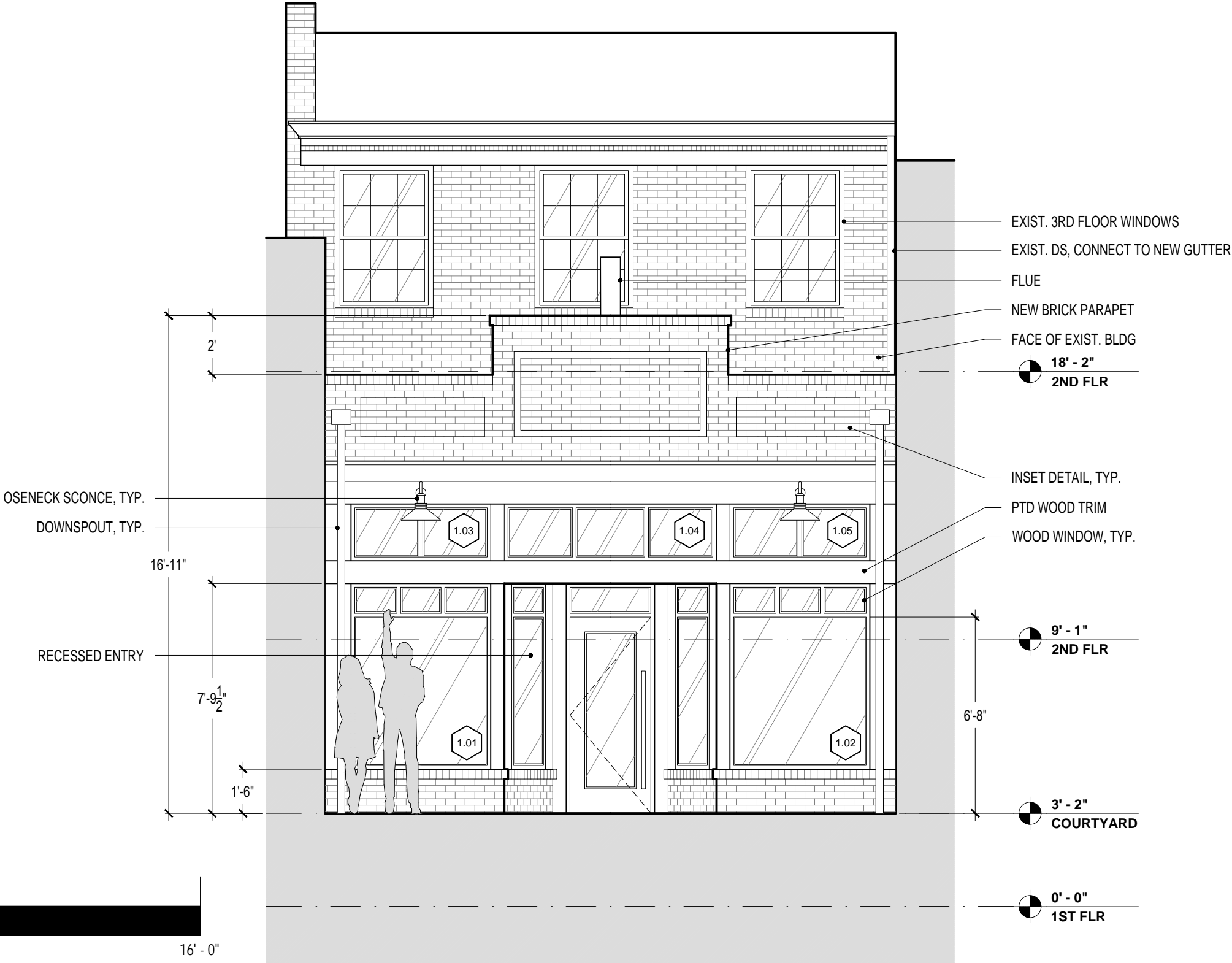
3 Roof Plan
A1 1/4" = 1' - 0"



THE AVERY HOTEL BAR

BAR ADDITION + INTERIOR RENOVATION
OLD GEORGETOWN BOARD US COMMISSION OF FINE ARTS
FEBRUARY 4, 2021



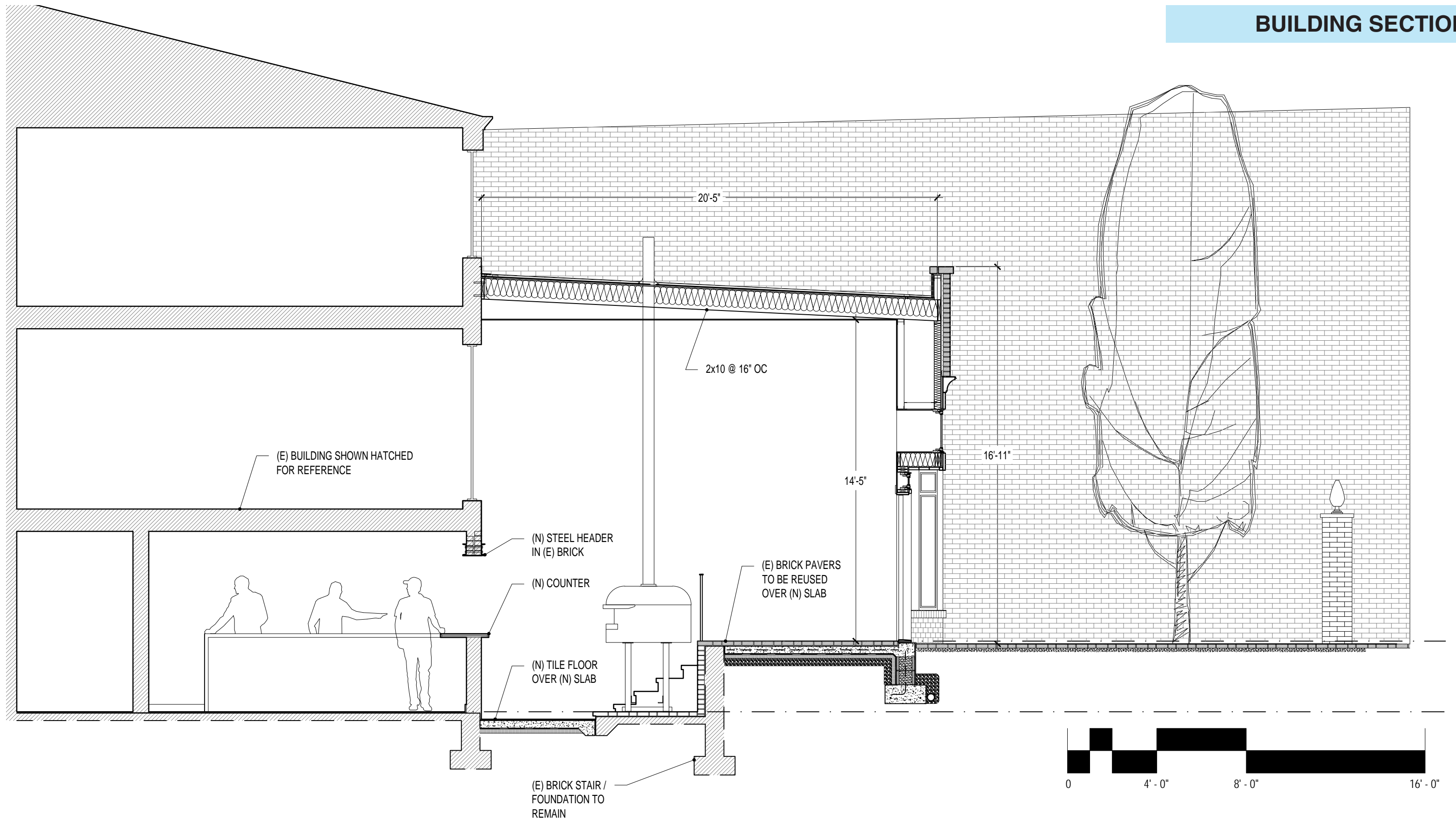


THE AVERY HOTEL BAR

BAR ADDITION + INTERIOR RENOVATION
OLD GEORGETOWN BOARD US COMMISSION OF FINE ARTS
FEBRUARY 4, 2021



BUILDING SECTION



THE AVERY HOTEL BAR

BAR ADDITION + INTERIOR RENOVATION
OLD GEORGETOWN BOARD US COMMISSION OF FINE ARTS
FEBRUARY 4, 2021

EASTWING
ARCHITECTS



THE AVERY HOTEL BAR

BAR ADDITION + INTERIOR RENOVATION
OLD GEORGETOWN BOARD US COMMISSION OF FINE ARTS
FEBRUARY 4, 2021

EASTWING
ARCHITECTS

STREET VIEWS

P STREET LOOKING SOUTH



THE AVERY HOTEL BAR

BAR ADDITION + INTERIOR RENOVATION
OLD GEORGETOWN BOARD OF COMMISSION OF FINE ARTS
FEBRUARY 4, 2021



EASTWING
ARCHITECTS

STREET VIEWS

P STREET LOOKING SOUTH



THE AVERY HOTEL BAR

BAR ADDITION + INTERIOR RENOVATION
OLD GEORGETOWN BOARD US COMMISSION OF FINE ARTS
FEBRUARY 4, 2021



EASTWING
ARCHITECTS