

# **ROCK CREEK PARK GOLF COURSE REHABILITATION**

**U.S. COMMISSION OF FINE ARTS  
CONCEPT DESIGN**

NOVEMBER 2022



# AGENDA

## **I INTRODUCTION**

NLT'S MISSION

THE DISTRICT'S THREE HISTORIC PUBLIC GOLF COURSES

ROCK CREEK PARK GOLF COURSE

PROJECT PURPOSE AND GOALS

## **II PROJECT NARRATIVE**

PROJECT OVERVIEW

VICINITY MAP

## **III HISTORICAL OVERVIEW**

TIMELINE

1927 SITE PLAN

## **IV EXISTING CONDITIONS**

EXISTING SITE PLAN

EXISTING CONDITIONS: GOLF COURSE

EXISTING CONDITIONS: CLUBHOUSE

## **IV PROPOSED DESIGN**

SITE AND LANDSCAPE

CLUBHOUSE, DRIVING RANGE AND CART BARN



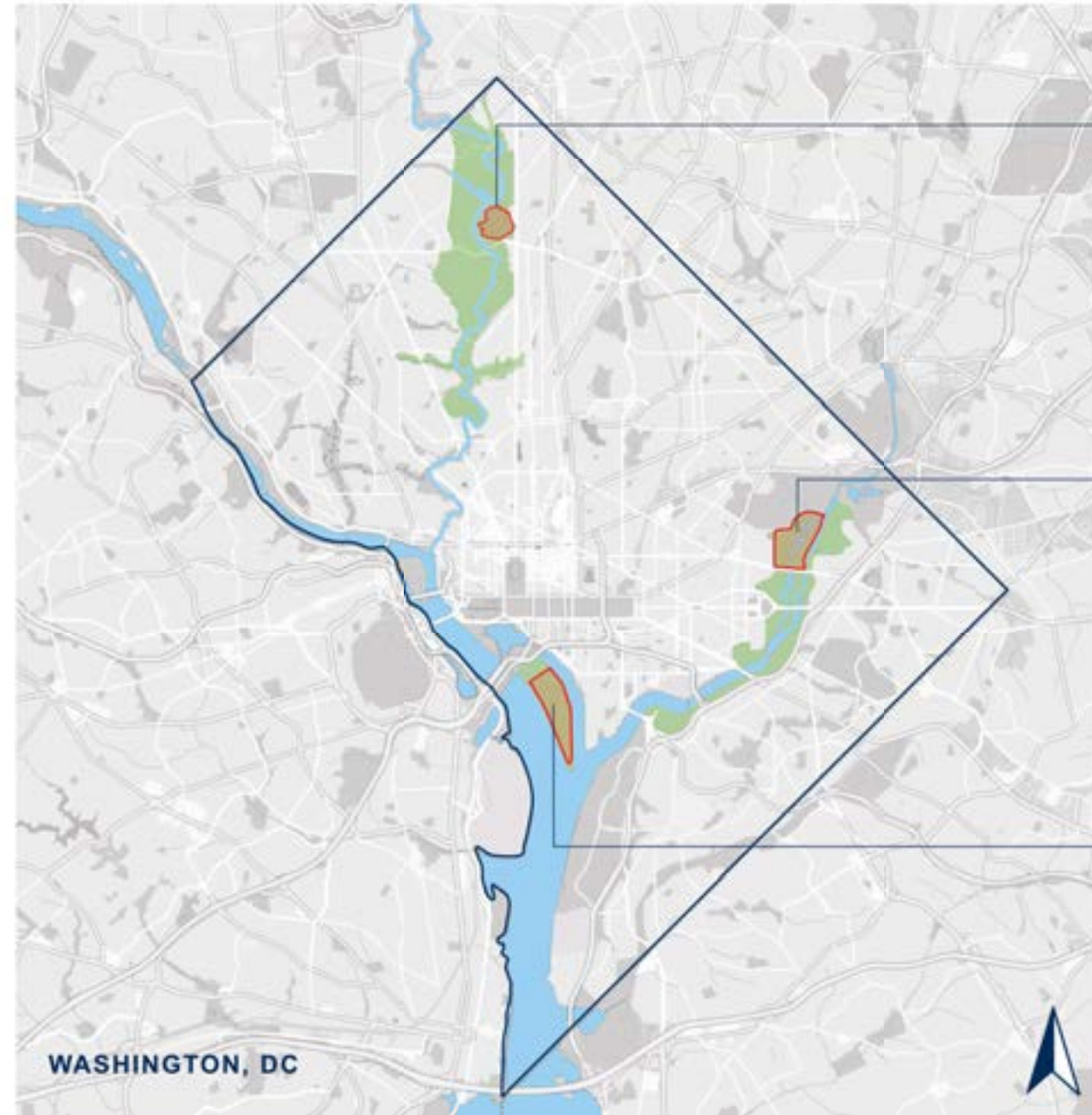
**National Links Trust, a 501(c)(3) non-profit, is dedicated to protecting and promoting accessible, affordable and engaging public golf courses to positively impact local communities across the United States.**

- Signed a 50-year lease with National Park Service (NPS) signed a 50 to operate three historic public golf courses in Washington, DC: East Potomac, Langston, and Rock Creek.
- Goal to not only to create improved recreational opportunities, but to provide broader benefits to community.
- Committed to implement a course of action that honors the past and ensures a bright future for the three golf facilities.
- Dedicated to providing affordable and engaging golf that is accessible to all and well-maintained and environmentally sound green spaces that are beneficial for everyone, golfers and non-golfers alike.



# NLT'S MISSION

# THE DISTRICT'S THREE HISTORIC PUBLIC GOLF COURSES



## 1 ROCK CREEK PARK GOLF COURSE ROCK CREEK PARK

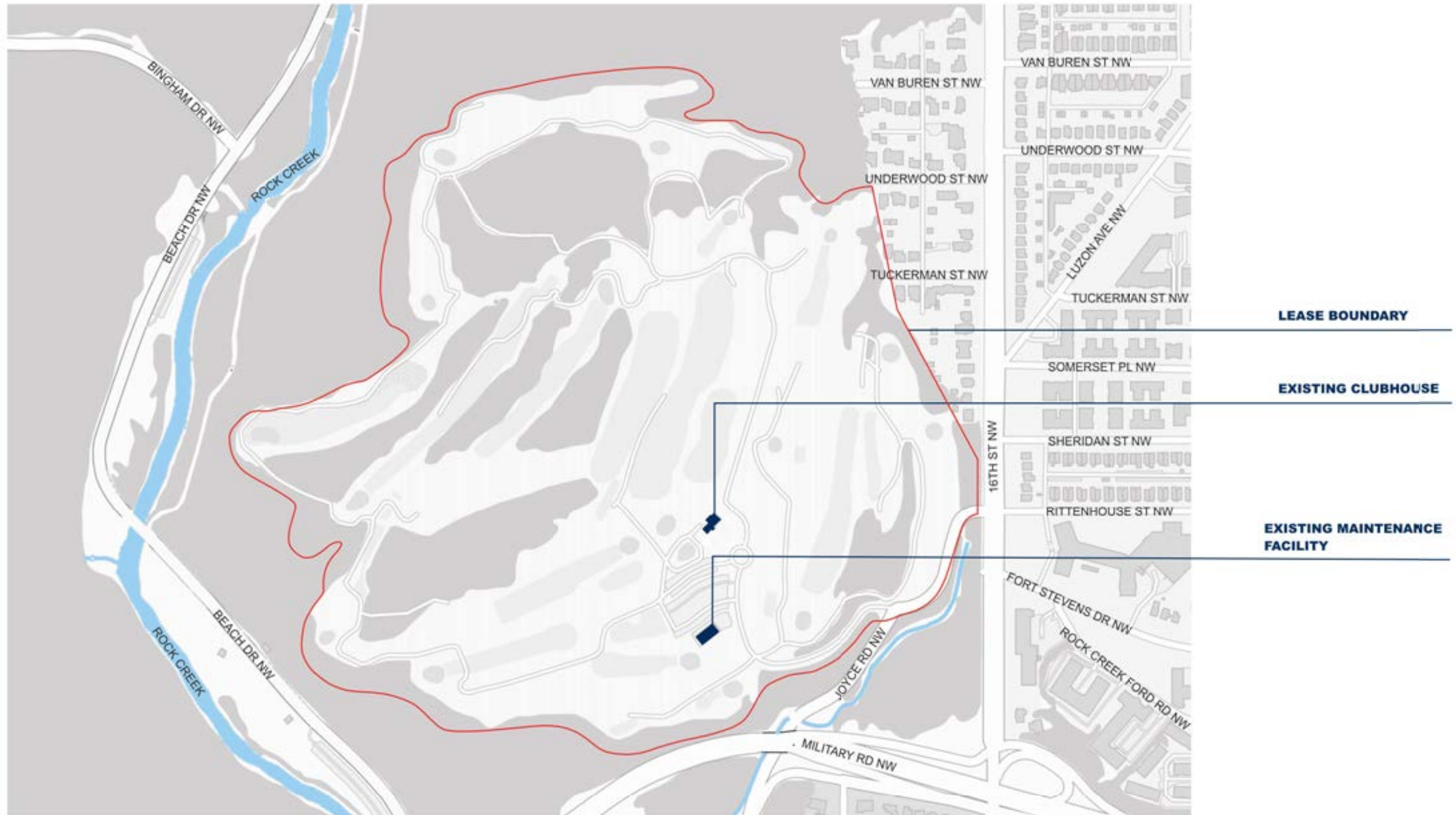


## 2 LANGSTON GOLF COURSE ANACOSTIA PARK



## 3 EAST POTOMAC GOLF COURSE EAST POTOMAC PARK





**ROCK CREEK PARK GOLF COURSE VICINITY MAP**

## **PROJECT PURPOSE**

**Address deferred maintenance**

**Increase playability**

**Broaden course appeal to local community**

**Achieve financial stability**

## **PROJECT GOALS**

**Sustainability and Historic Preservation**

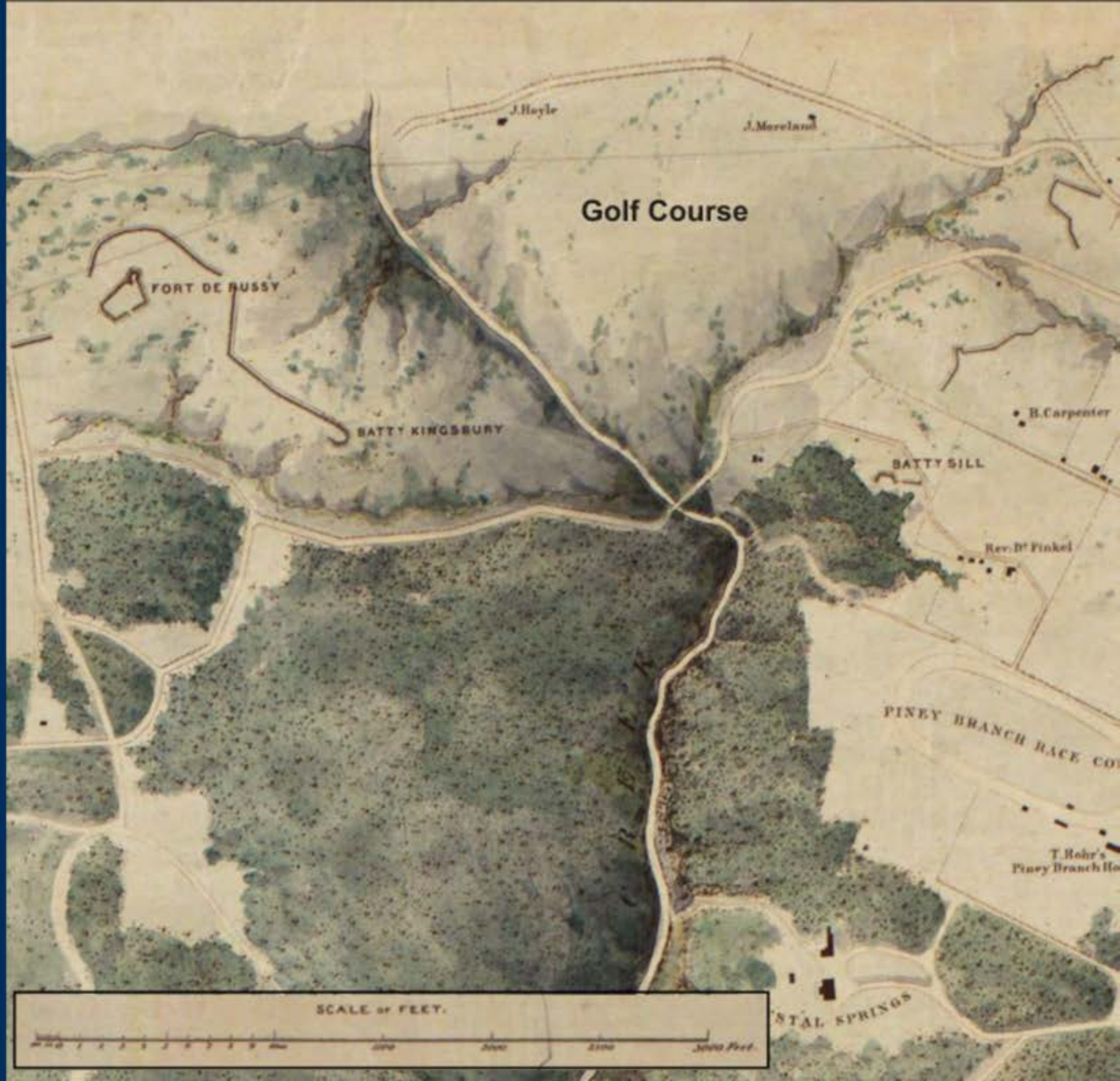
Revival of **Exemplary Golf Course Architecture**

**Environmental Sustainability**

**Growth in Golf Participation via Non-Traditional Golf Options**

**Expanded Community, Non-Golf Infrastructure and Non-Golf Programming**

# HISTORY



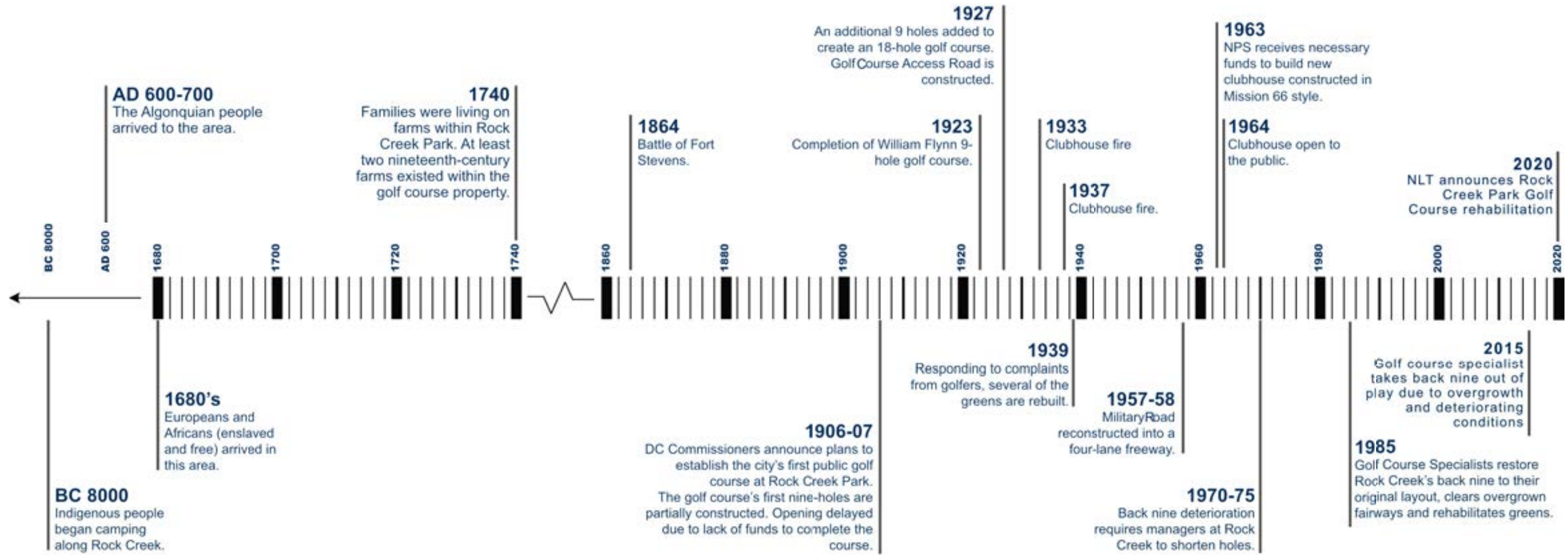


Illustration of Stone Working at Piney Branch Quarry (Holmes 1897)



Farmhouse on site that was used as the golf clubhouse from 1923 to 1964.



Aerial View of the Golf Course, 1927.



View from 11<sup>th</sup> green to 11<sup>th</sup> tee showing erosion in front of tee, 1957.



Existing Clubhouse under construction, 1964



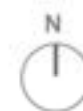


### WILLIAM FLYNN'S GOLF COURSE

- Noted golfcourse architect William Flynn designed this 18-hole golf course, opened to the public in 1926, that expanded on the parkland style of the original 9-hole course he designed here in 1923.
- Flynn is most recognized for his parkland style designs, which are laid out across rolling terrain and incorporate mature trees. The steep topography and wooded environs of Rock Creek lent itself to the dramatic parkland-style Flynn was known for.
- The course's continued use for almost 100 years is a testament to Flynn's concern for building courses that would stand the test of time.

#### LEGEND

① Standard Course



0 300 600

SCALE: 1" = 300'-0"

**EXISTING  
CONDITIONS**





### TODAY'S GOLF COURSE

- Located on east side of Rock Creek Park at the intersection of 16th and Military Road NW on approximately 100 acres.
- 14-hole course (four holes of the original back 9 are currently not in play) with a counterclockwise progression of play centered on the clubhouse.
- The front 9 holes are characterized by visually open spaces, gentle slopes, and wide fairways.
- The back 5 holes are characterized by narrow fairways, dense forests, and steep slopes.
- The course currently suffers from deferred maintenance that has impacted golf course facilities as well as the playability of the course.



### LEGEND

- ① Standard Course
- ② Holes Not in Use
- Course Overlay of Built 1927 Course



## EXISTING SITE PLAN

A



B



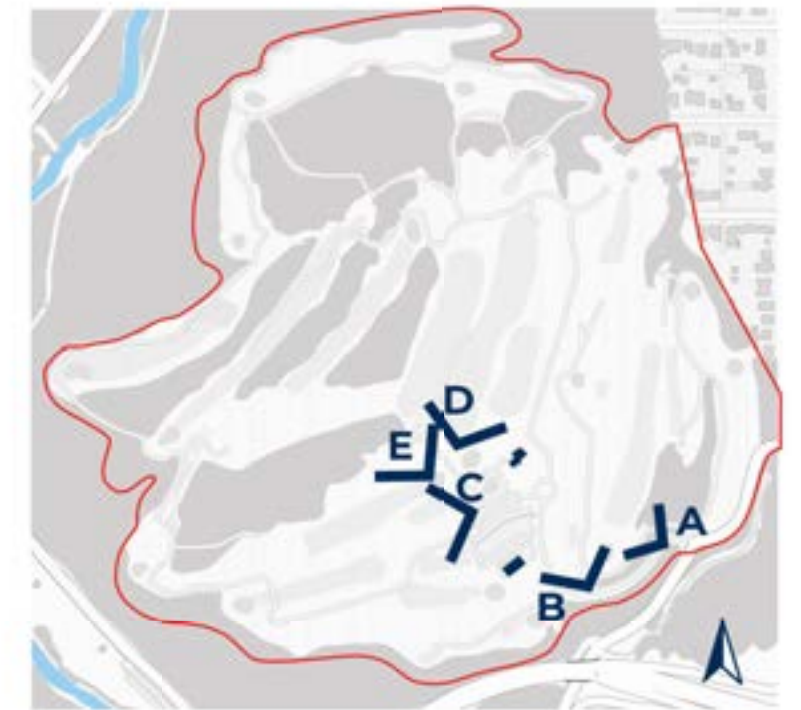
C



D



E



**EXISTING CONDITIONS**

F



G



H



I



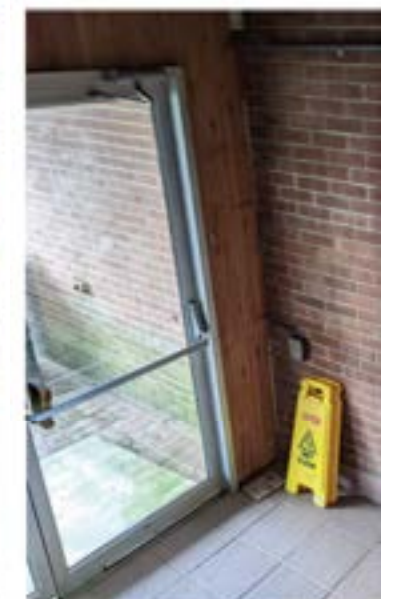
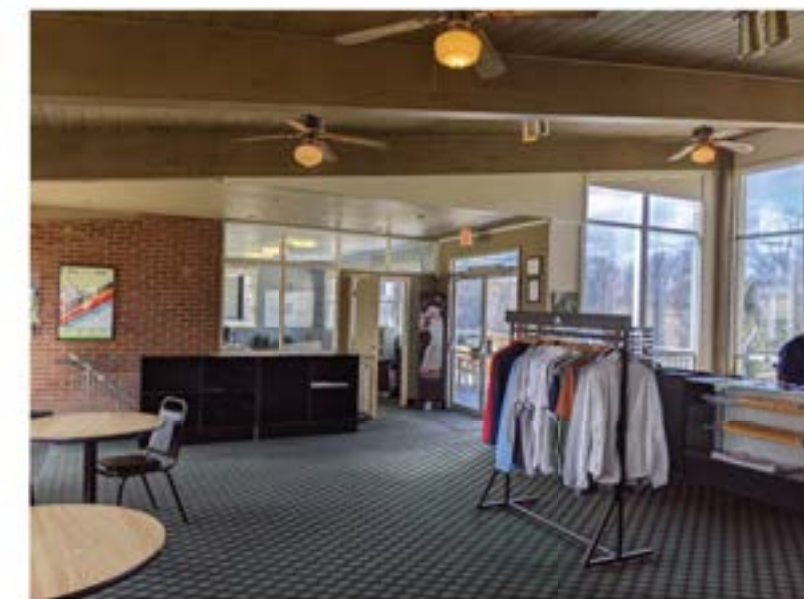
J



**EXISTING CONDITIONS**

### TODAY'S CLUBHOUSE

- Built in 1964 in the NPS Mission 66 style.
- Does not adequately support golf course operations.
- Not accessible to persons with disabilities.
- Not a good candidate for reuse due to its small size, lack of accessible facilities and routes, and extensive use of masonry interior partitions that make any floor plan changes costly and difficult.



### EXISTING CONDITIONS

# PROPOSED DESIGN





**GOLF COURSE REHABILITATION PROGRAM**

- 9-Hole Regulation Course
- 9-Hole Par-3 Course
- Short Game Practice Area
- 50 Bay Driving Range
- Practice Putting Green
- Golf Academy
- Restaurant & bar with indoor seating and patio with outdoor seating
- Flexible Meeting/Event Space
- Pro Shop
- Accessible Enhancements
- Bike Parking
- Community Programming Space
- Maintenance Building and Yard
- Park Visitor Parking
- Hiking Trails
- Irrigation Pond/ Pump House
- First Tee DC Headquarters

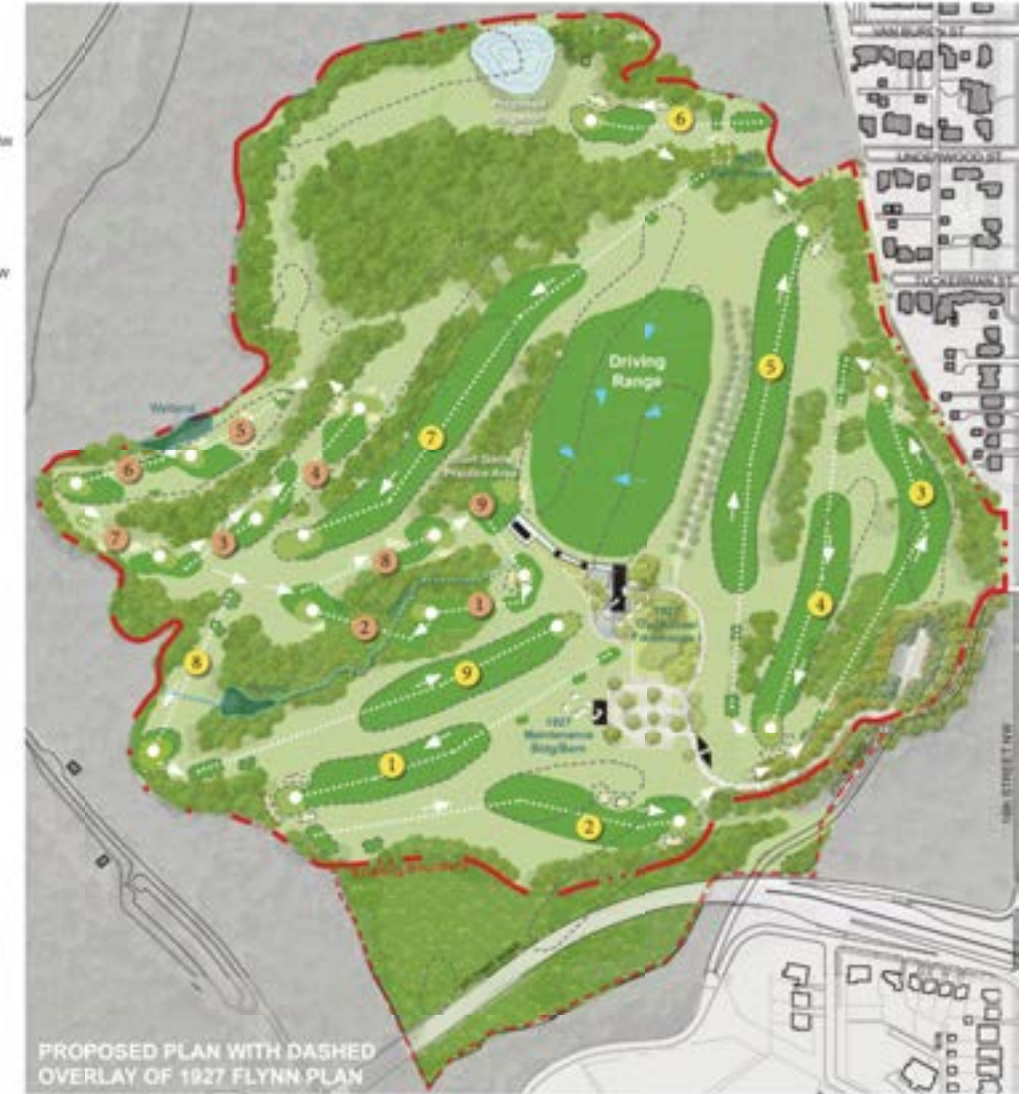
**LEGEND**

- ① Standard Course
- ② Par 3 Course
- ⋯ Course Overlay of Built 1927 Course



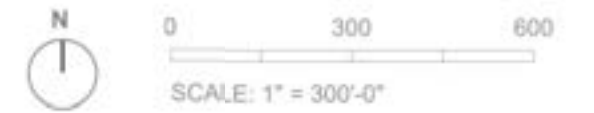
PROPOSED PLAN WITH DASHED  
 OVERLAY OF 1927 FLYNN PLAN





**LEGEND**

- 1 Standard Course
- 1 Par 3 Course
- 1 Holes Not in Use
- Course Overlay of Built 1927 Course



**SITE PLAN OVER TIME**



**LEGEND**

- ① Proposed Clubhouse
- ② Golf Cart Barn
- ③ Proposed Maintenance Building
- ④ Community Pavilion with Terraced Seating
- ⑤ 9 Hole Regulation Golf Course
- ⑥ 9 Hole Par 3 Golf Course
- ⑦ Practice Green
- ⑧ Driving Range
- ⑨ Pollinator Meadow
- ⑩ Irrigation Pond
- ⑪ Rock Creek Golf Course Nature Trail
- ⑫ Riparian Vegetative Buffer
- ⑬ Reestablishment of Historic Farm Road Cedar Allee
- ⑭ Proposed Rock Creek Park Golf Course Welcome Signage
- Accessible Paths  
(precise routes subject to change upon further study)



**LANDSCAPE PLAN**



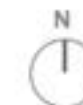
EXISTING VIEWS



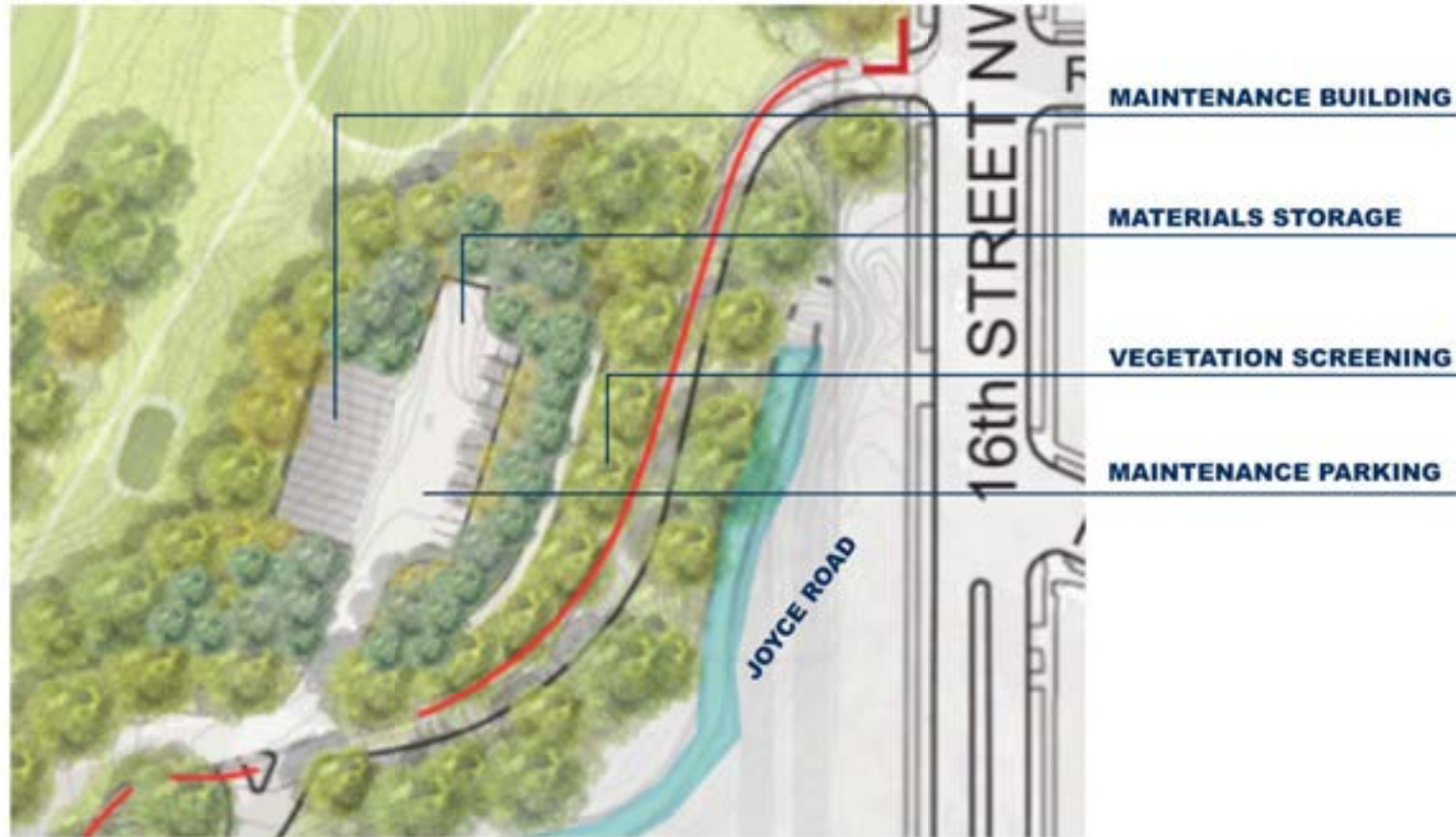
## ENTRY SEQUENCE



ECOLOGICAL TRAIL - - - - -



# ECOLOGICAL TRAIL



## MAINTENANCE BUILDING & PAVILION



## IRRIGATION POND



**LEGEND**

- Existing Contour
- Proposed Contour
- +258 Spot Elevation
- +TW 258 Top of Wall
- +BW 258 Bottom of Wall
- +TS 258 Top of Step
- +BS 258 Bottom of Step
- 3% Slope
- Existing Tree To Remain

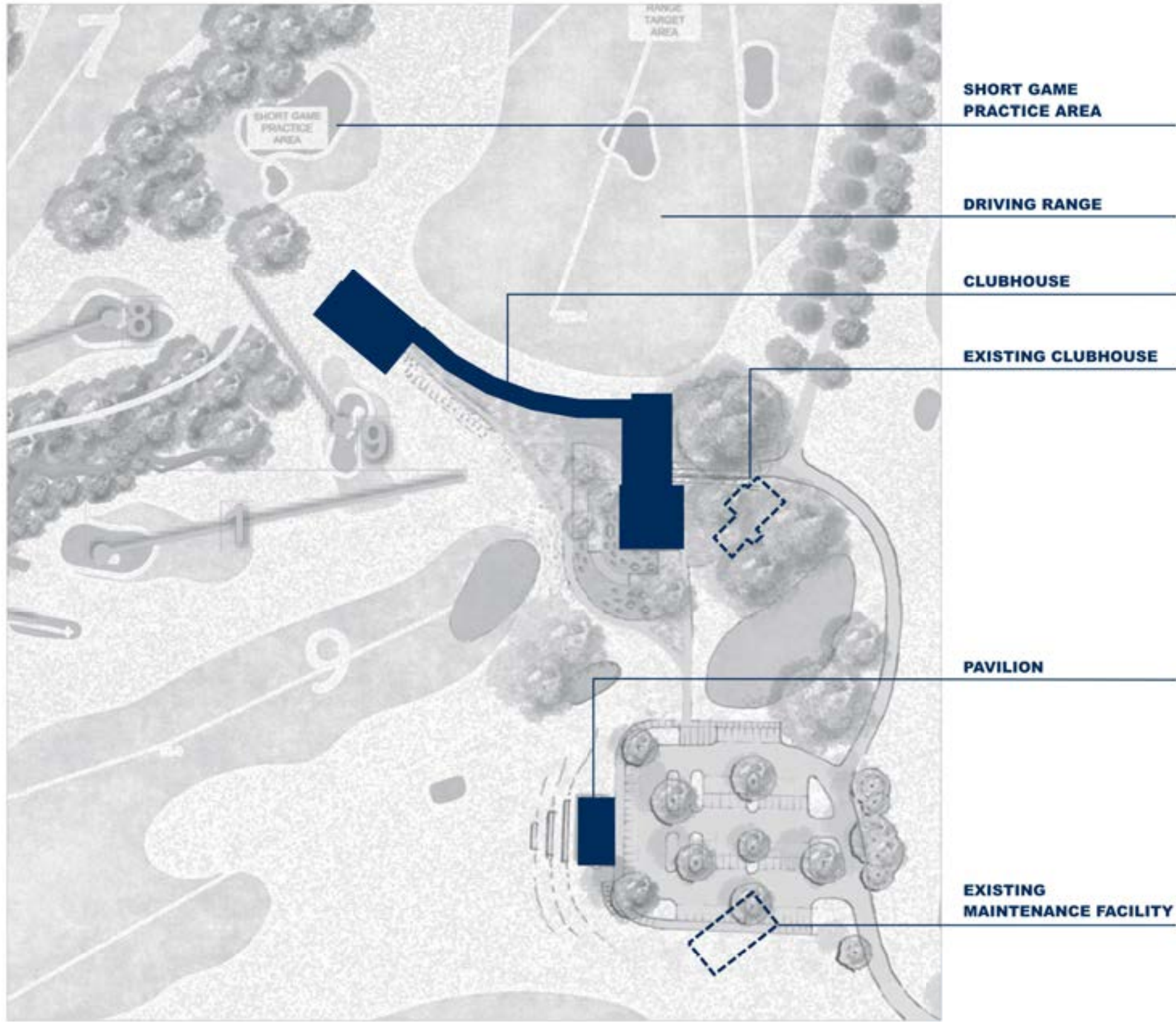


**LANDSCAPE PLAN**



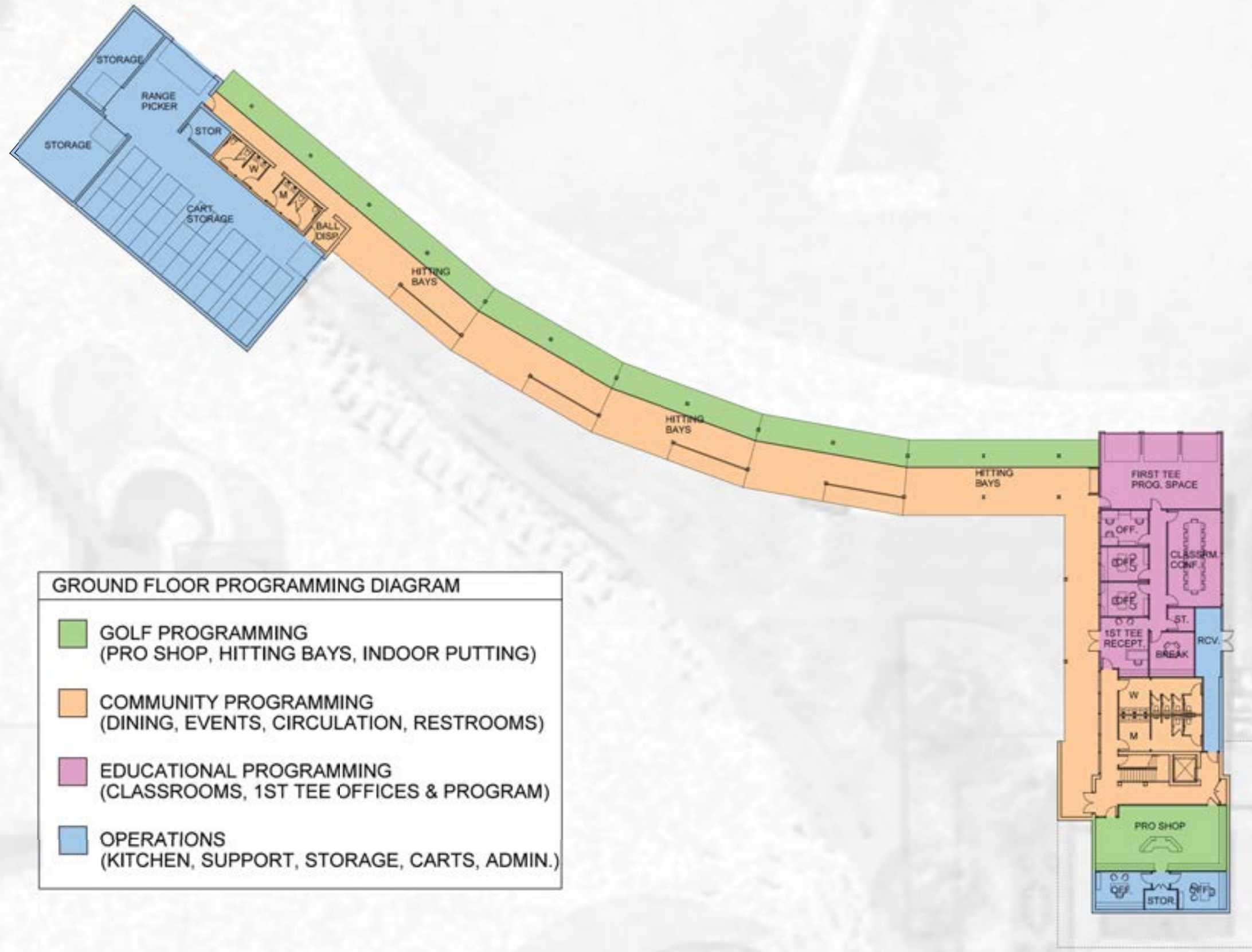
## LANDSCAPE MATERIALITY





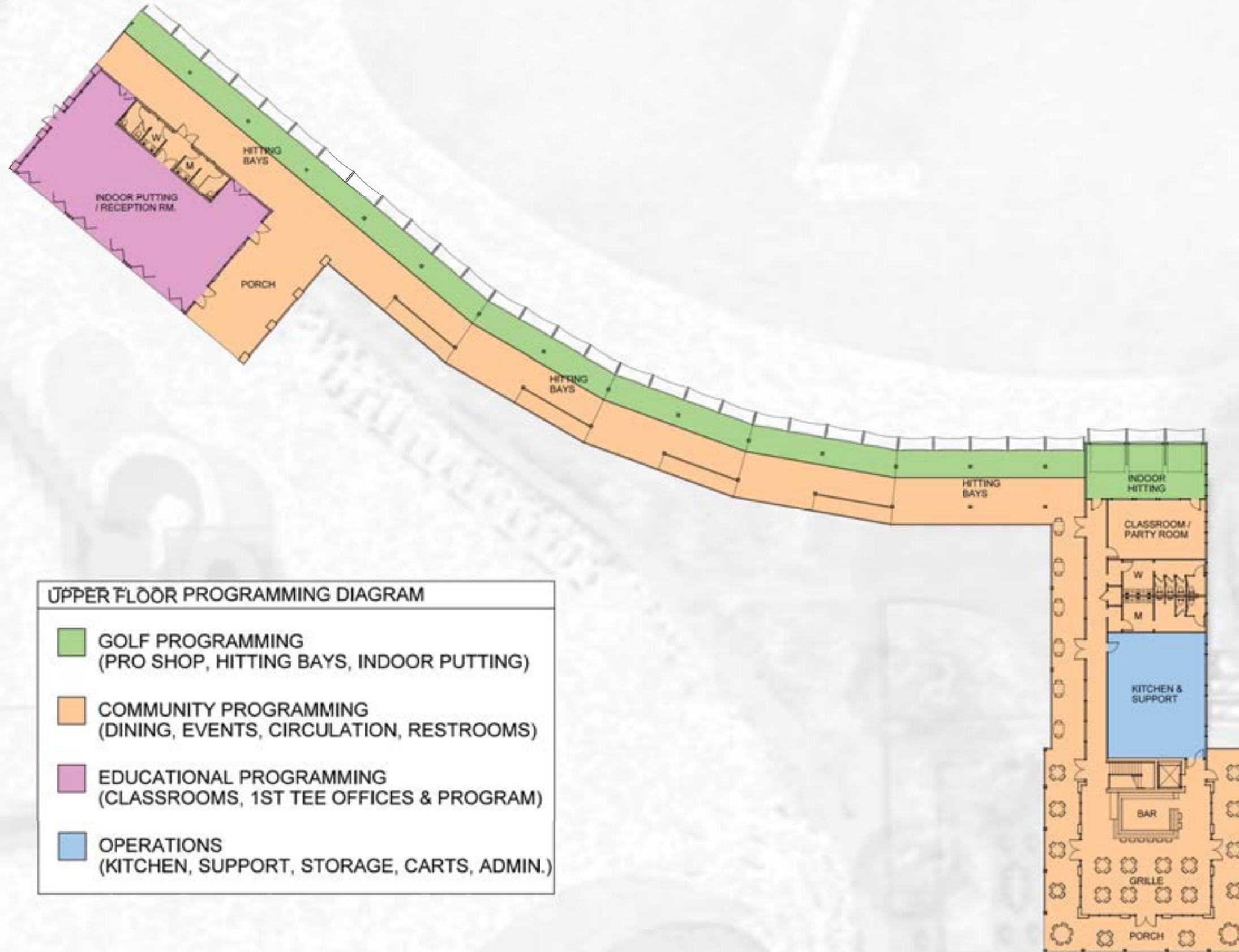
## BUILDING SITE









**CLUBHOUSE, DRIVING RANGE AND CART BARN - LOWER FLOOR PLAN**





UPPER FLOOR PROGRAMMING DIAGRAM	
	GOLF PROGRAMMING (PRO SHOP, HITTING BAYS, INDOOR PUTTING)
	COMMUNITY PROGRAMMING (DINING, EVENTS, CIRCULATION, RESTROOMS)
	EDUCATIONAL PROGRAMMING (CLASSROOMS, 1ST TEE OFFICES & PROGRAM)
	OPERATIONS (KITCHEN, SUPPORT, STORAGE, CARTS, ADMIN.)

## CLUBHOUSE, DRIVING RANGE AND CART BARN - UPPER FLOOR PLAN



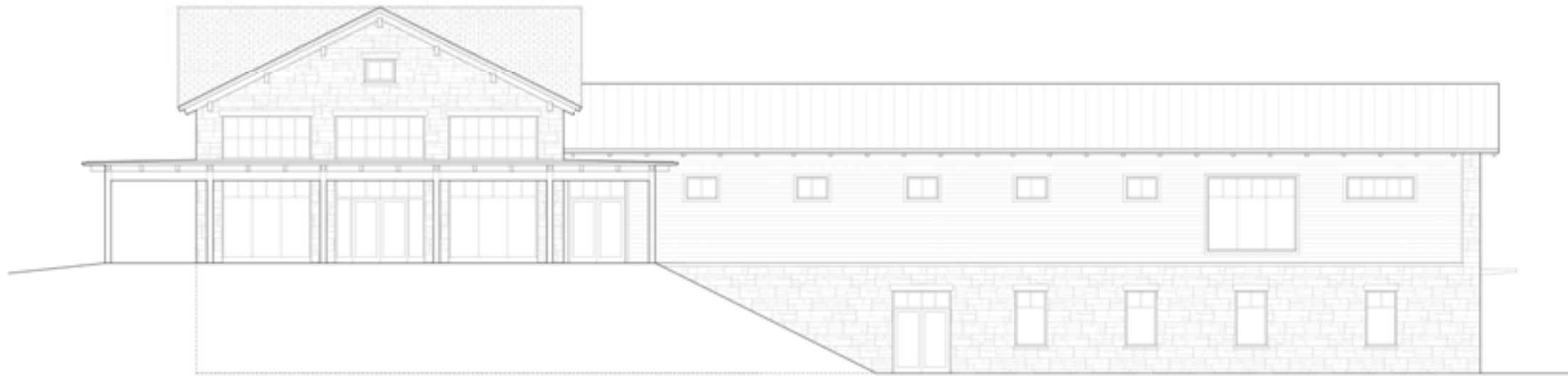
**CLUBHOUSE, DRIVING RANGE AND CART BARN - ROOF PLAN**



## BUILDING MATERIALITY



WEST ELEVATION



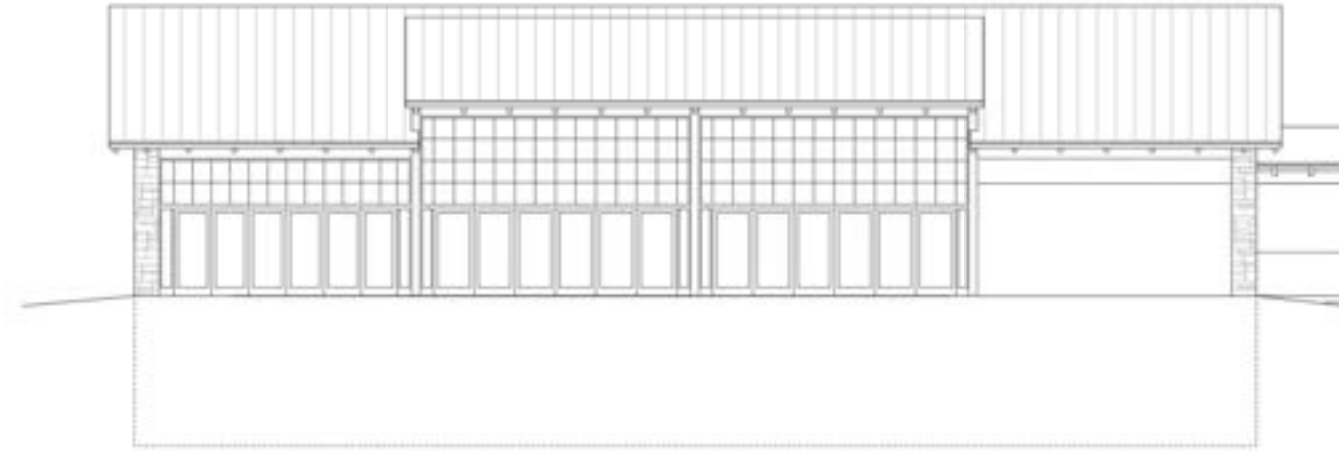
EAST ELEVATION

## CLUBHOUSE ELEVATIONS





WEST ELEVATION



SOUTH ELEVATION



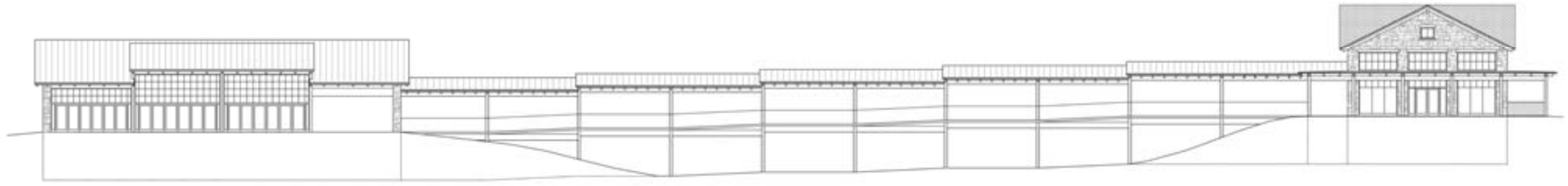
EAST ELEVATION



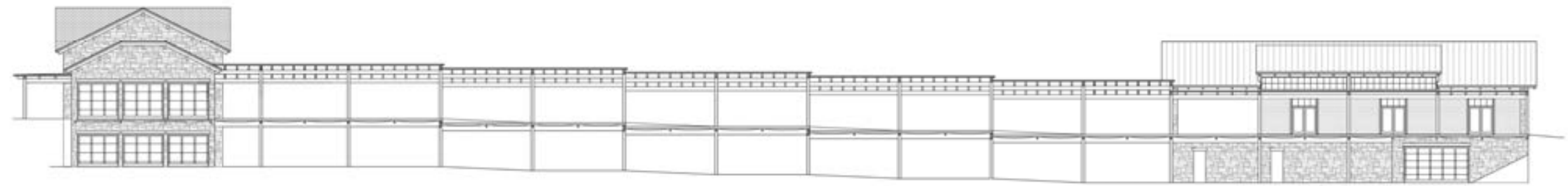
NORTH ELEVATION

## CART BARN ELEVATIONS





SOUTHWEST ELEVATION



NORTHEAST ELEVATION



# CLUBHOUSE, DRIVING RANGE, AND CART BARN - ELEVATIONS

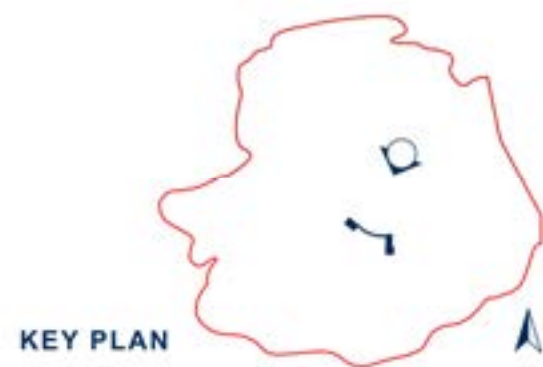




VIEW LOOKING SOUTHWEST FROM TOP OF DRIVING RANGE



VIEW LOOKING NORTHEAST FROM 9TH HOLE GREEN





# **ROCK CREEK PARK GOLF COURSE**

---

**COMMISSION OF FINE ARTS  
CONCEPT DESIGN**

NOVEMBER 2022