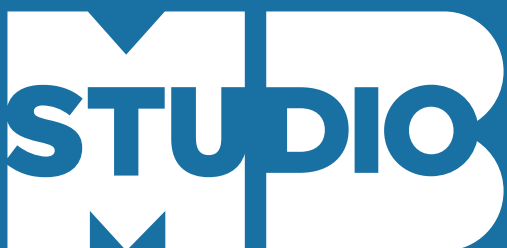


CONGRESS HEIGHTS RECREATION CENTER

US COMMISSION OF FINE ARTS
CONCEPT SUBMISSION

07.03.2025



PROJECT OVERVIEW

The District of Columbia Department of General Services (DC/DGS), on behalf of the District of Columbia Parks and Recreation (DPR), have selected the GCS/StudioMB team to review and re-design the new Congress Heights Recreation Center located at 611 Alabama Ave SE, Washington DC 20032.

The project had previously been submitted and approved by the Commission on 2 separate occasions. The first proposal in 2020 included community spaces and a full sized gymnasium, while the second proposal in 2022 added an indoor swimming pool. The new building design, which retains the community spaces and gymnasium, eliminates the swimming pool but retains the general approach to the massing and site layout as the 2022 submission..

The project is located in the center of a block between Alabama Street and Savannah Street. Vehicular access is via a shared alley off of Alabama Street between Martin Luther King Elementary School and the Rehoboth Baptist Church while currently the access via Savannah Street to the south is pedestrian only and via a stair with no accommodations for ADA.

The proposed project includes a large gymnasium, e-gaming facility, incubator kitchen for neighborhood use, a multi-purpose room and fitness center. Exterior spaces have been developed to include playgrounds, picnic pavilion and community gardens as well as a large multi-use field. The site design also includes new parking, new Storm Water Management facilities, a basketball court, community gardens and new playing fields. Additionally the site improvements includes landscape improvements with plantings new paths and access points for vehicles and pedestrians from Savannah Street with full accessibility from that portion of the site.

PROJECT TIMELINE

- 2019: PROJECT AWARDED BY DGS/DPR (TO OTHERS)
- 2020: 24,000SF CFA SUBMISSION & APPROVAL (BY OTHERS)
- 2022: 26,905 SF (WITH INDOOR POOL) - CFA SUBMISSION & APPROVAL (BY OTHERS)
- 2025: 17,500 SF (NO POOL)

PROJECT OVERVIEW & PROGRAM

This project is a replacement of the existing small community building and park amenities at Congress Heights Park located in Ward 8 Washington, DC. The project includes a new 26,905 SF recreation center with new outdoor site amenities and trails. The replacement facilities will provide improved recreation and community amenities for this neighborhood location in Ward 8. The programmatic focus of this multi-generational facility is both the youth activities and activities for families to recreate and socialize together. MLK Jr. Elementary School has been using the existing playground areas. It is the intent that access to the new playground areas will continue for the students at the elementary school.

Outdoor site program amenities include two playground areas for children 2-5 years old and children 5-12 years old, an outdoor court, a multi-purpose field for pee-wee football and U-11/U-12 soccer, a community garden, picnic shelters, and a fitness trail.

Recreation center program elements include a gymnasium, aquatic center, fitness room, multipurpose room, E-Gaming Center, flex program space, incubator kitchen, community store, admin areas, locker rooms, and support spaces.

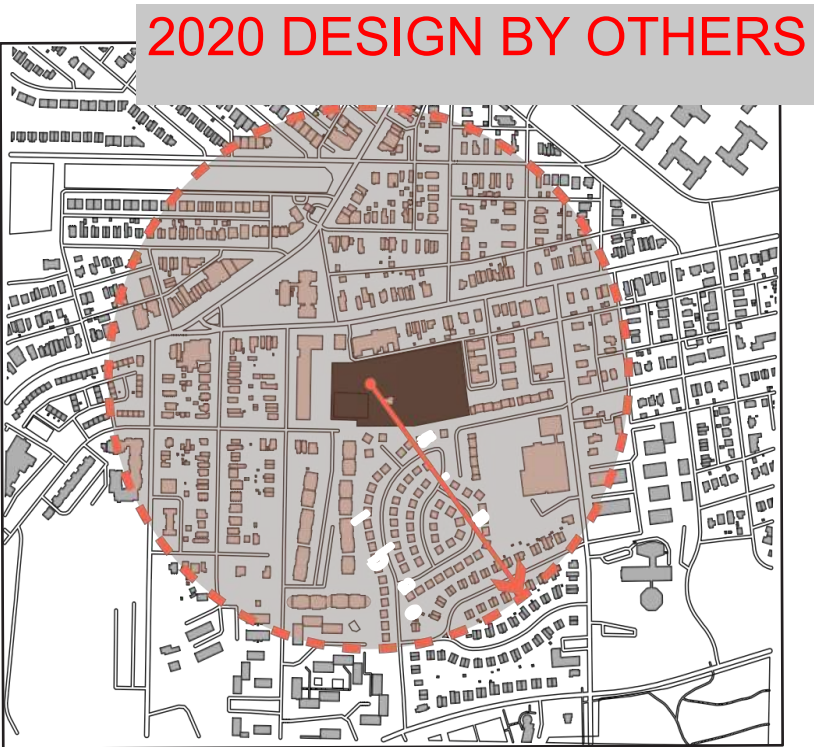
The project will be designed for LEED Silver Certification.

EXISTING SITE DESCRIPTION

The existing park site is land bound on all four sides with no direct access to any main street, Martin Luther King Jr. Elementary School on the west, Rehoboth Baptist Church on the north, apartment building on the east and single- family residential development on the south.



AERIAL VIEW



5 MINUTE WALK RADIUS

EXISTING PARK



1 VEHICULAR/PEDESTRIAN ACCESS FROM ALABAMA AVE.

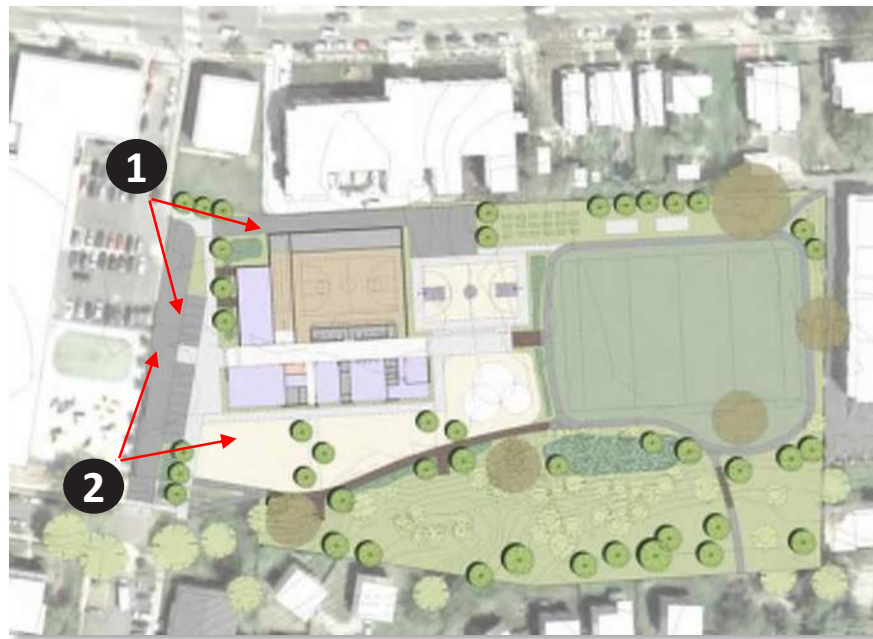
2 PEDESTRIAN ACCESS FROM SAVANNAH STREET



1 NORTHWEST VIEW (FROM ALABAMA AVE. APPROACH)

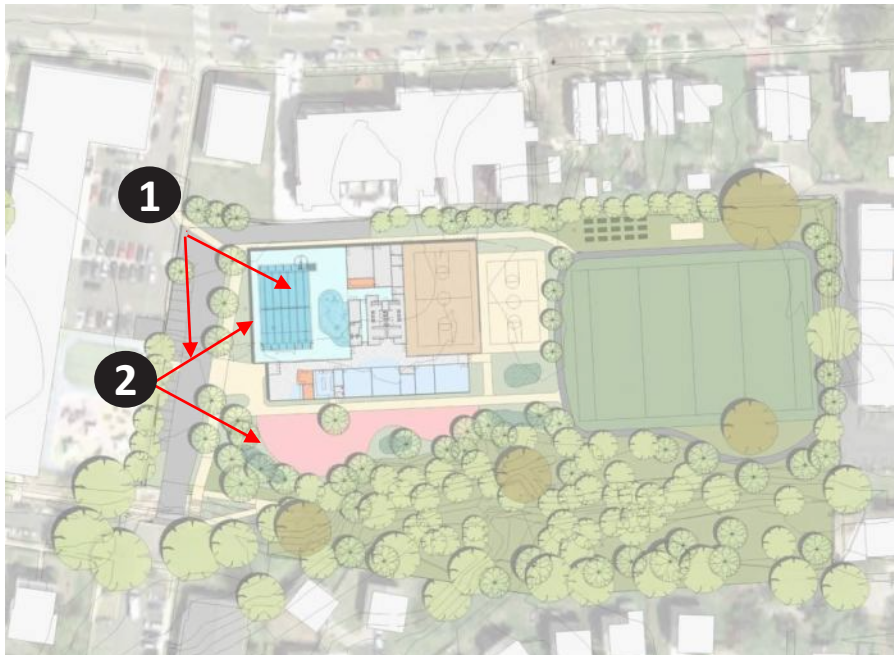


2 SAVANNAH STREET VIEW

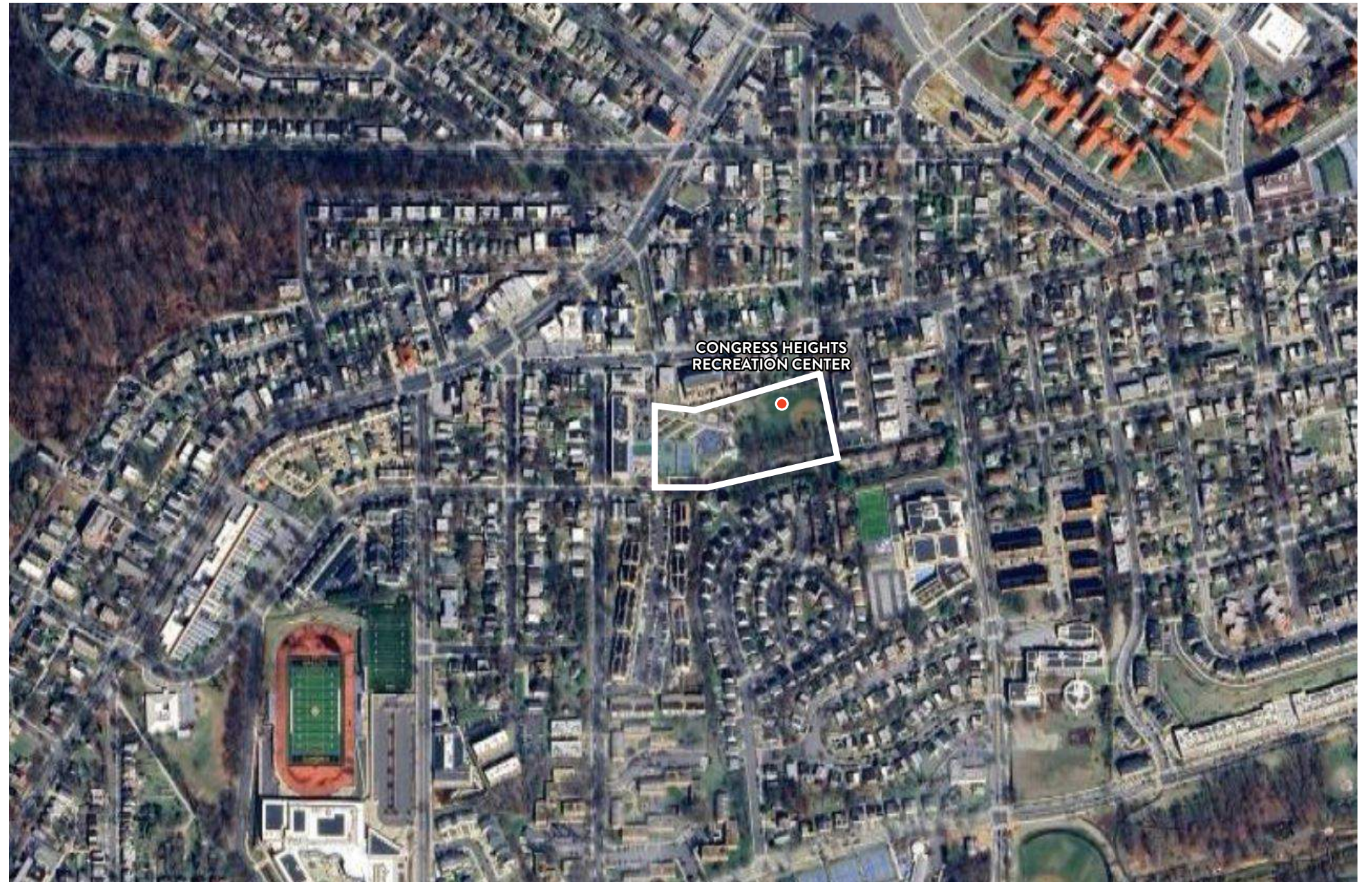
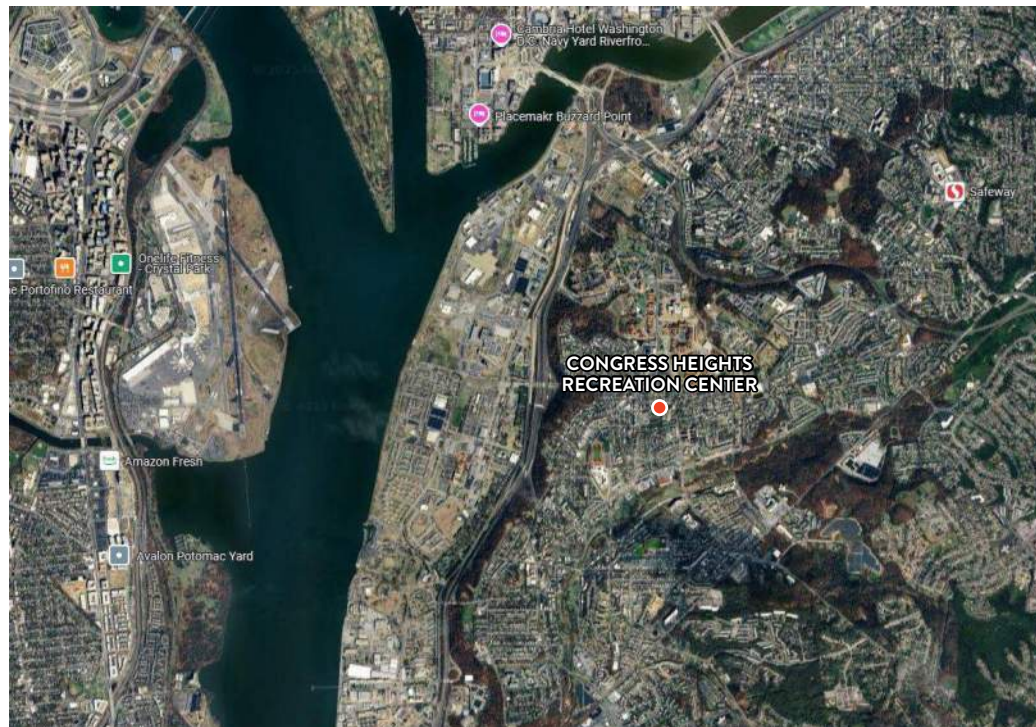
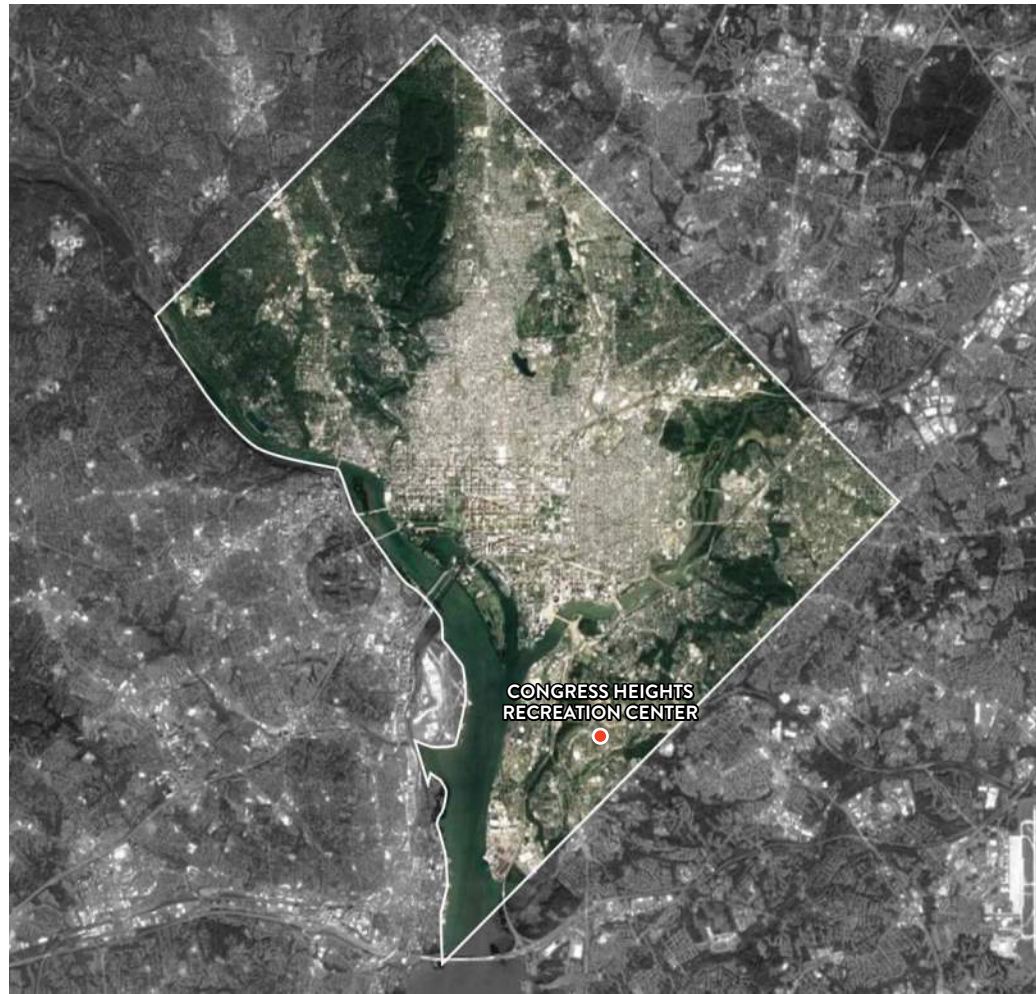




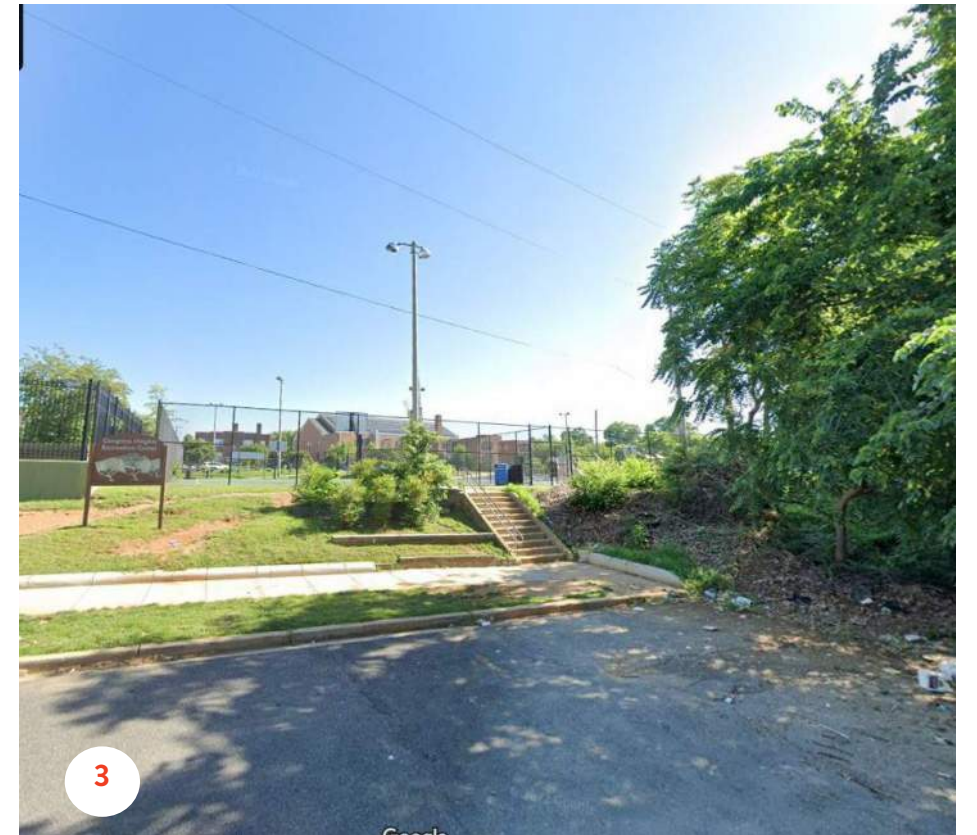
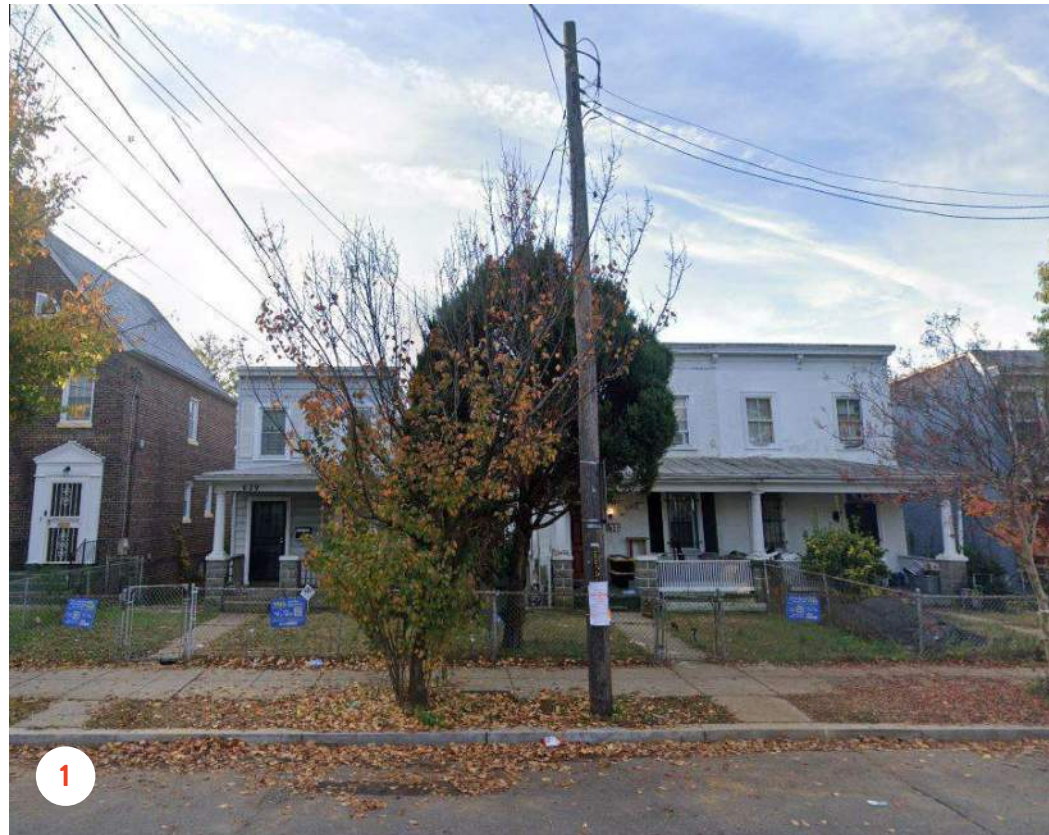
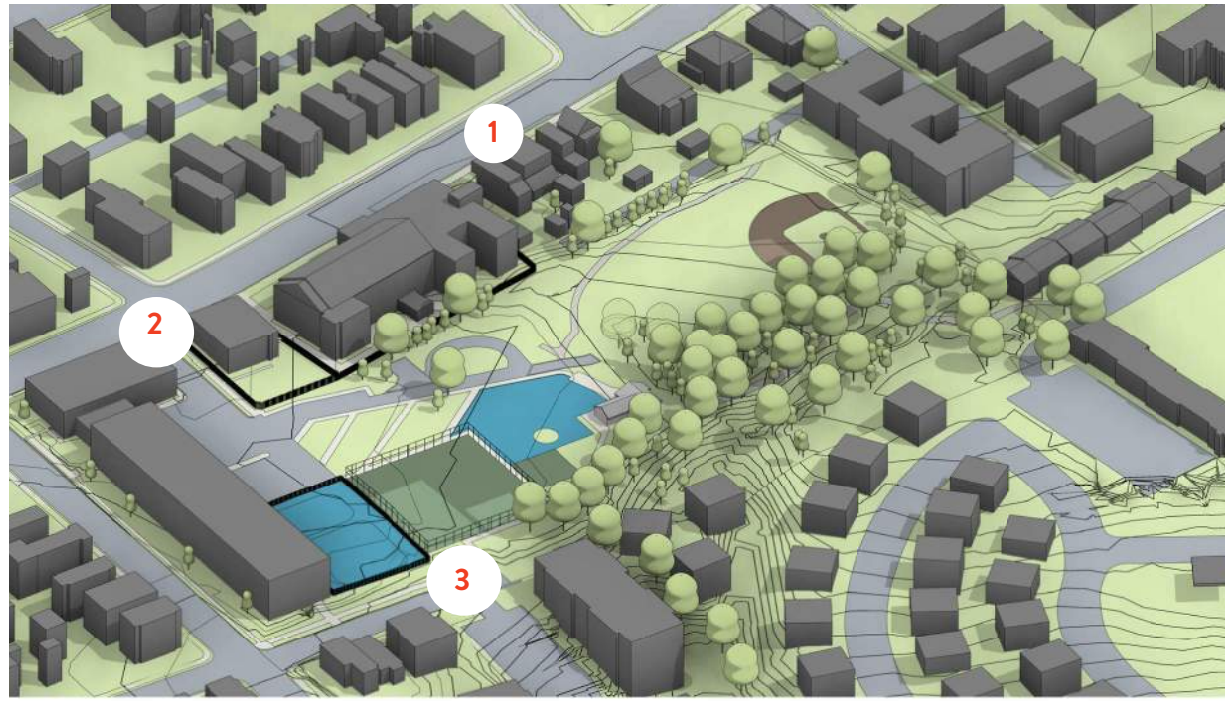
1 NORTHWEST VIEW (FROM ALABAMA AVE. APPROACH)



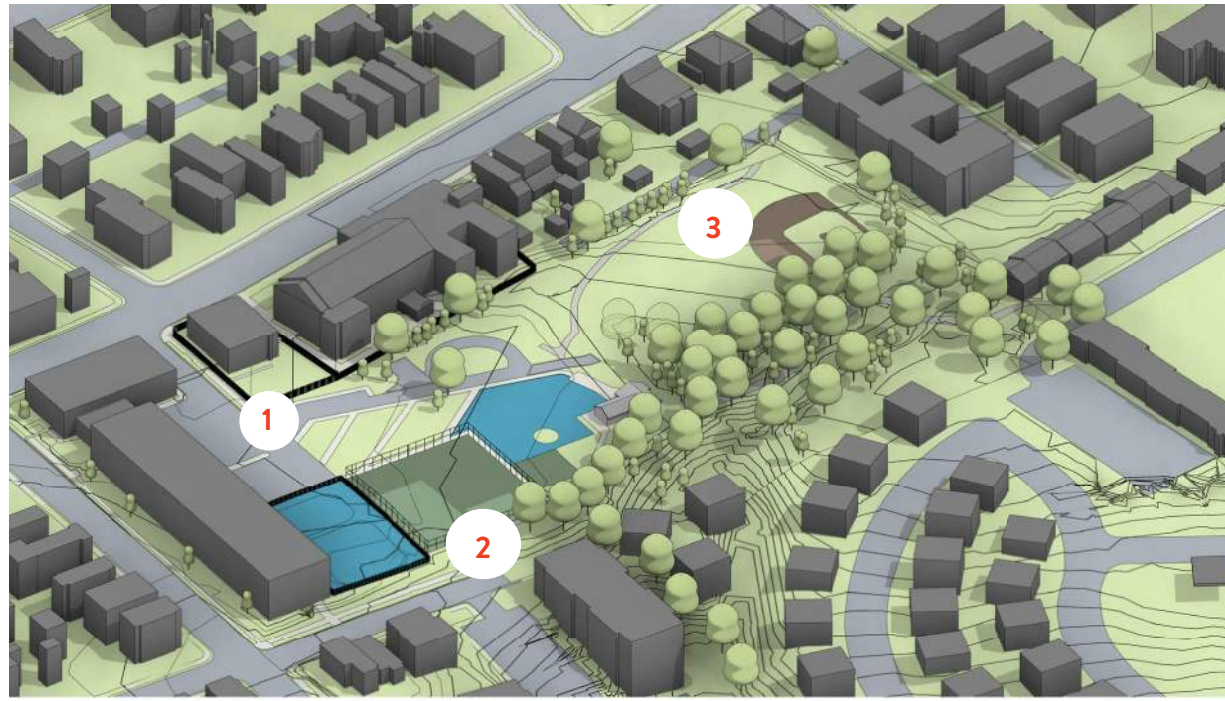
2 WEST VIEW (BUILDING ENTRY)



1 EXISTING CONTEXT

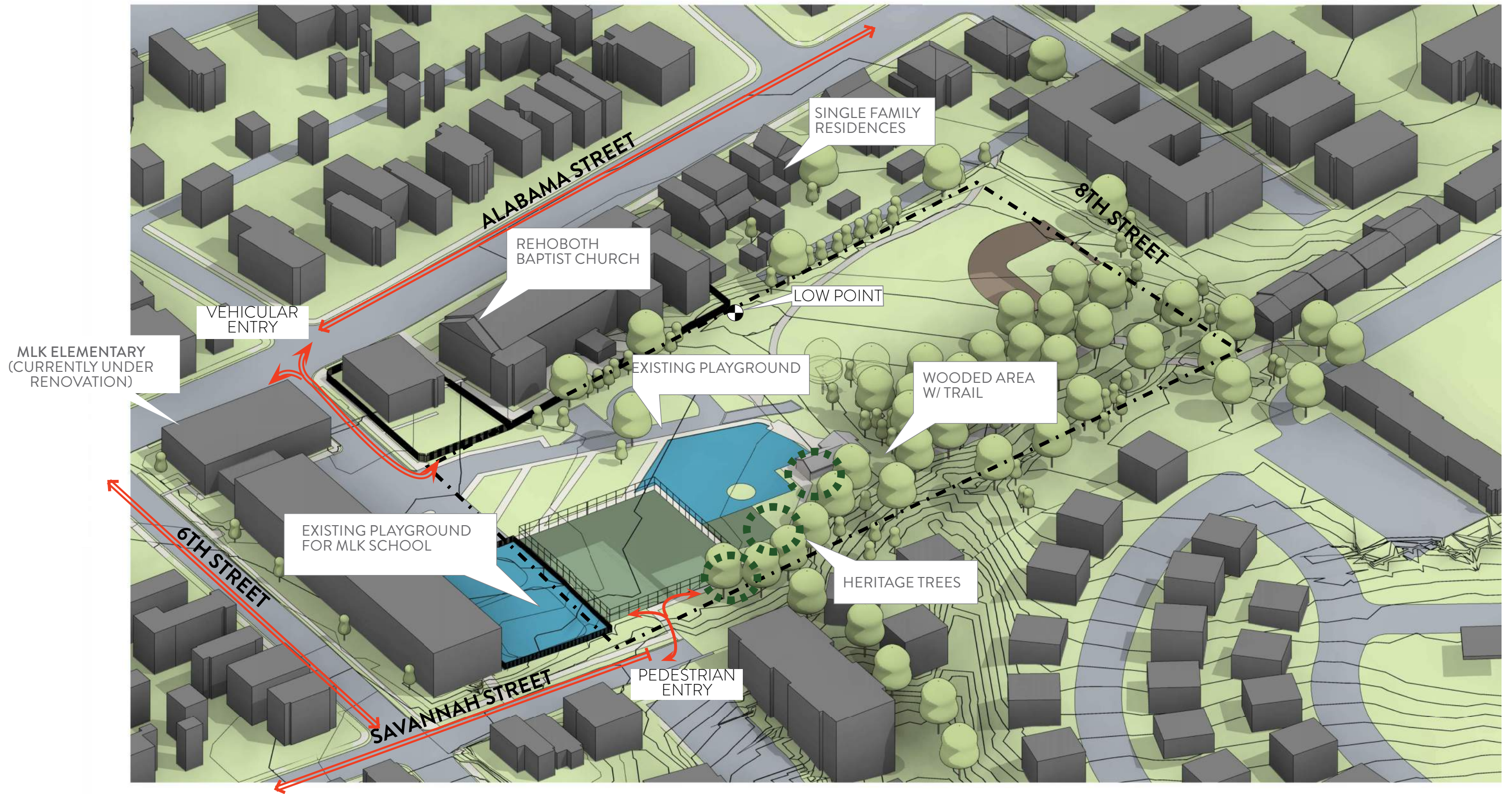


1 EXISTING CONTEXT: OUTSIDE THE BLOCK



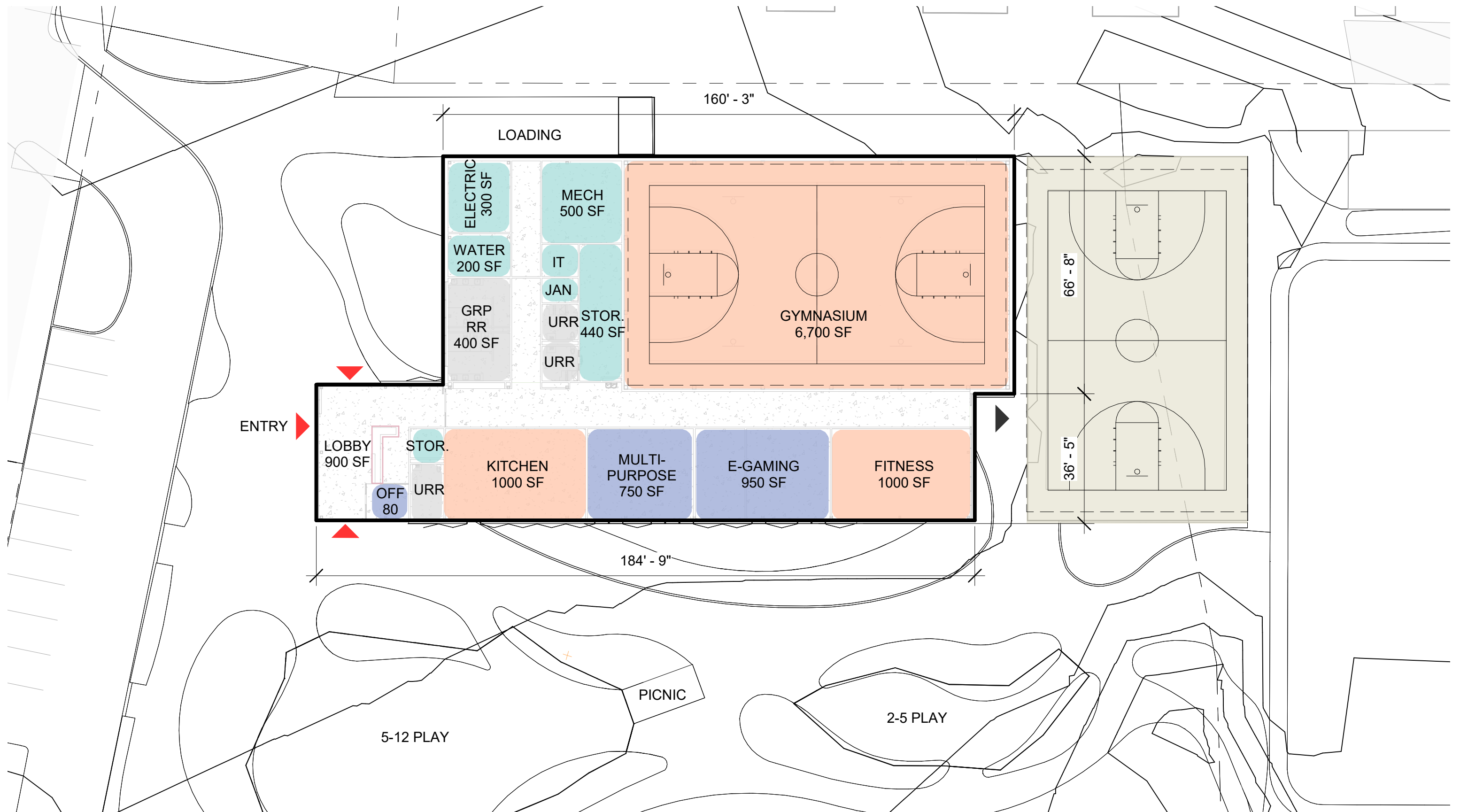
1 EXISTING CONTEXT: INSIDE THE BLOCK

1 EXISTING CONTEXT





1 SITE UTILIZATION



1 CONCEPT BUILDING LAYOUT

MARTIN LUTHER KING JR ELEMENTARY
(MODERNIZATION)



REHOBOTH BAPTIST CHURCH



MLK JR ELEMENTARY ON 6TH ST



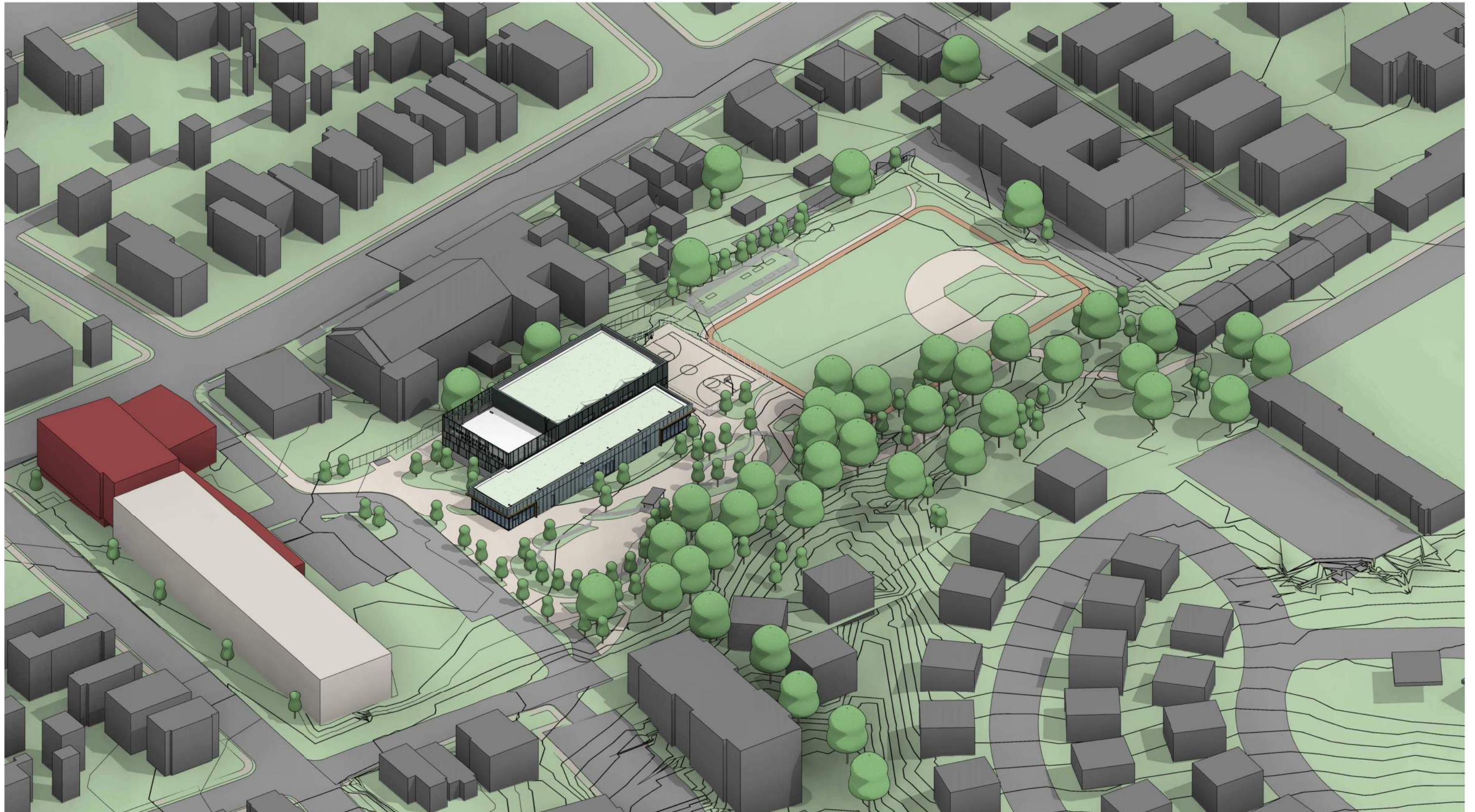
1 ARCHITECTURAL PRECEDENT



1 ARCHITECTURAL PRECEDENT

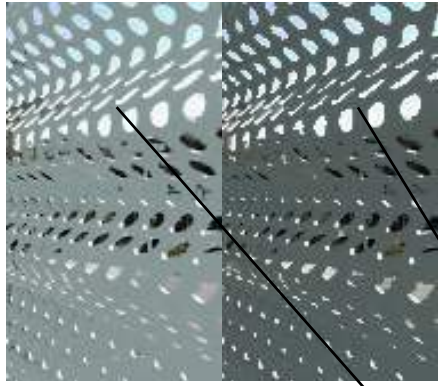


1 PERSPECTIVES



1 SOUTHWEST AXON VIEW

PERFORATED METAL



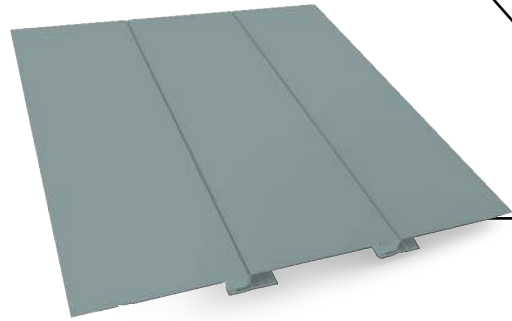
BLUE COLOR SWATCH



GREEN COLOR SWATCH



BLUE FLAT METAL PANEL



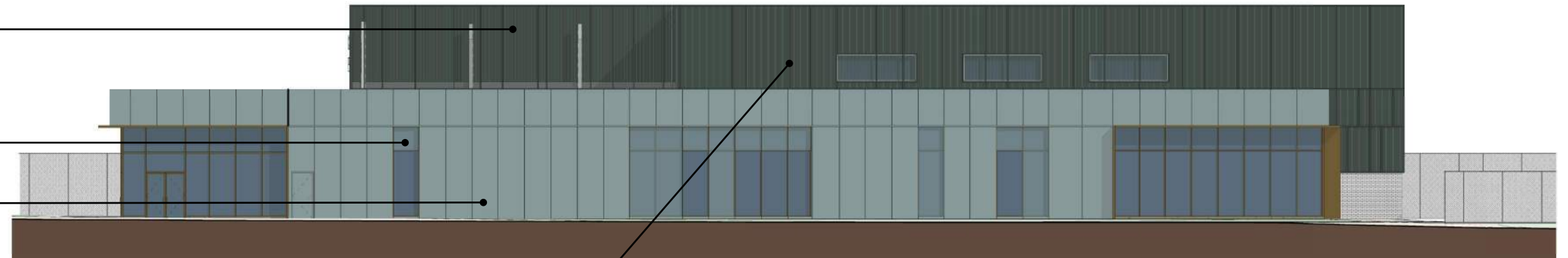
GREEN RIBBED METAL PANEL



LIGHT COLORED BRICK



METAL ACCENT AT STOREFRONT



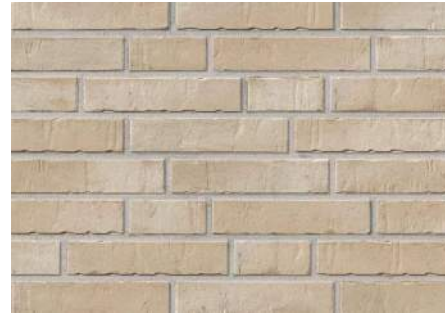
SOUTH ELEVATION



WEST ELEVATION

1 MATERIAL STUDIES -WEST AND SOUTH ELEVATION

LIGHT COLORED BRICK



METAL ACCENT AT STOREFRONT



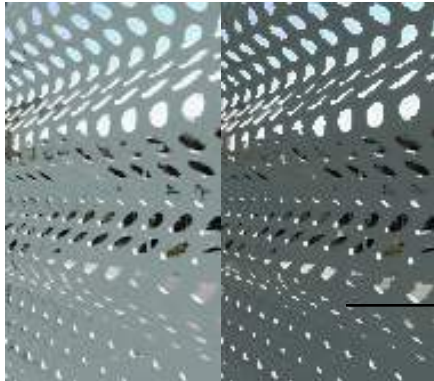
BLUE COLOR SWATCH



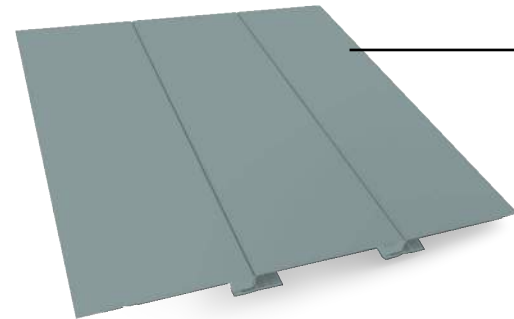
GREEN COLOR SWATCH



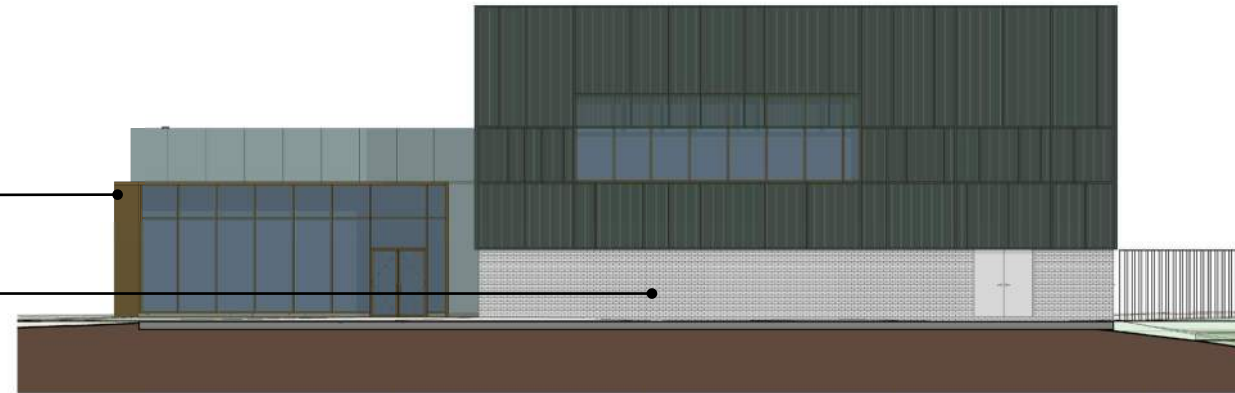
PERFORATED METAL



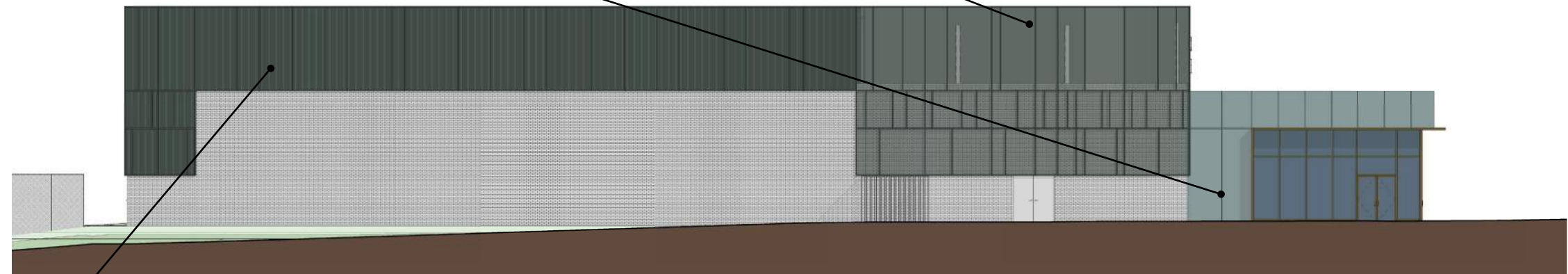
BLUE FLAT METAL PANEL



GREEN RIBBED METAL PANEL



EAST ELEVATION



NORTH ELEVATION

1 ELEVATION STUDIES -EAST AND NORTH ELEVATION



1 SITE PROGRAM AND LANDSCAPE PLAN



1 PERSPECTIVES



1 PERSPECTIVES



1 PERSPECTIVES