

# Ward 8 Senior Wellness Center

NOVEMBER 17, 2022 – CFA FINAL PRESENTATION #CFA-2613

**PERKINS EASTMAN DC**  
DESIGNING THE DISTRICT

**SALVI**



# DESIGN PRINCIPLES

## DESIGN PRINCIPLES



SENIOR WELLNESS CENTER FOR ALL 8 WARDS



COMMUNITY CONTEXT



MULTIGENERATIONAL APPROACH



# DESIGN PRINCIPLES

## DESIGN PRINCIPLES



NUTRITION FOCUSED



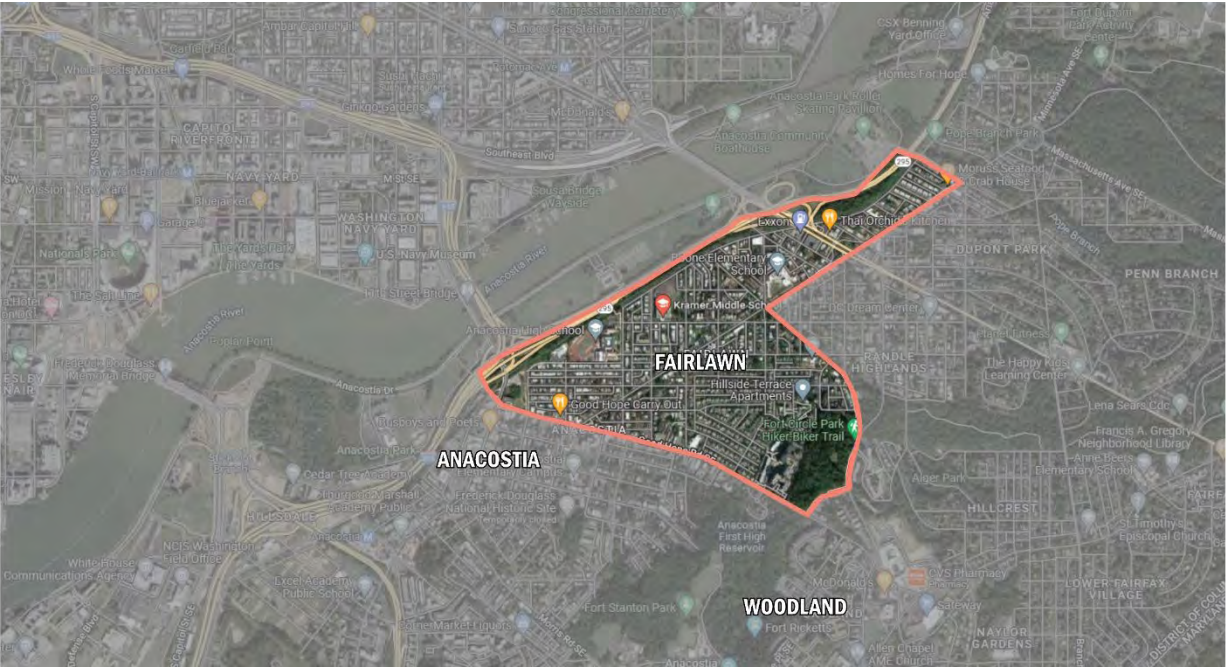
SEAMLESS INDOOR-OUTDOOR CONNECTION



PASSIVELY SUSTAINABLE



# SITE – REGIONAL CONTEXT





# SITE – FAIRLAWN





## SITE - TRANSPORTATION





# SITE – KEY ORGANIZATIONAL FEATURES

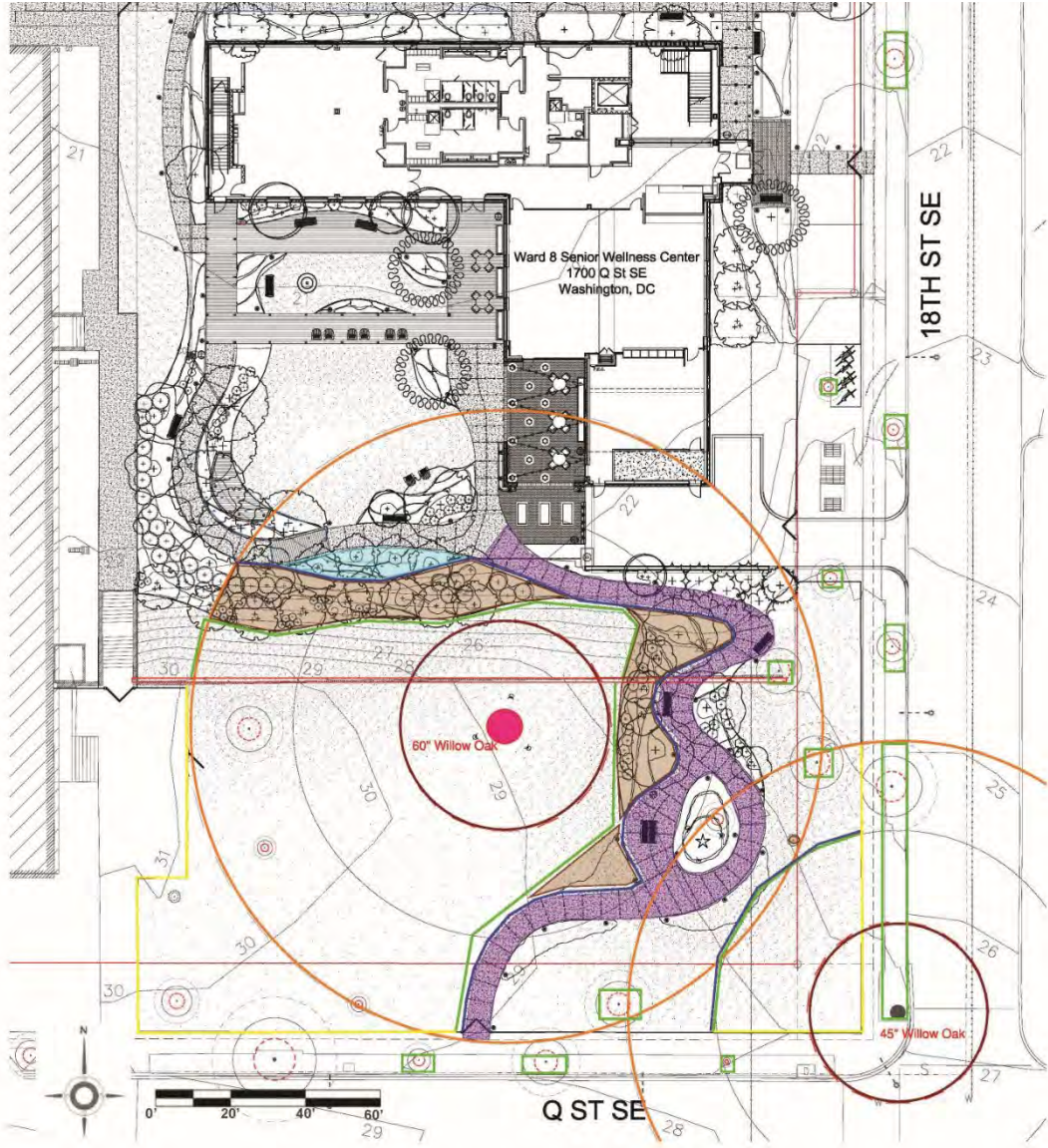




# SITE - HERITAGE TREE PRESERVATION



**NOTE:**  
In order to preserve the heritage tree, the design team is unable to provide a full loop around its root structure. However, since the gates will be open during SWC operating hours, the community can use this free space for a variety of activities including additional gardening, yoga, tai chi, Zumba, badminton, and other similar activities.





# SITE - TOPOGRAPHY



EXISTING



PROPOSED



# SITE – PROJECT SCOPE & FEATURES

## Proposed Site Features

- ① Senior Wellness Center Parking
- ② Kramer Middle School Parking
- ③ Play Field
- ④ Basketball court with fence
- ⑤ Aggregate Paving with Organic-Lok
- ⑥ Layered Planting
- ⑦ Bench
- ⑧ Bioretention
- ⑨ Concrete path - 4' Min Width
- ⑩ Lawn
- ⑪ Plant bed
- ⑫ Canopy Tree
- ⑬ Flowering Tree

## Existing Features

- ① Concrete Sidewalk
- ② Bike Racks
- ③ Site Wall
- ④ Street Tree
- ⑤ Perimeter Fence
- ⑥ Curb Cut





# SITE – PROJECT SCOPE & FEATURES

- Proposed Site Features**
- ① Wood deck
  - ② Trellis above
  - ③ Water feature
  - ④ Rocking chairs/Lounge seating
  - ⑤ Hydroponic towers
  - ⑥ Table with chairs
  - ⑦ Raised garden beds
  - ⑧ Open space for outdoor games and performances
  - ⑨ Shade tree
  - ⑩ Evergreen Hedge
  - ⑪ Plant bed
  - ⑫ Bioretention
  - ⑬ Community Art
  - ⑭ Bench
  - ⑮ Double-Sided Bench
  - ⑯ Wood Boardwalk
  - ⑰ Flowering Tree Grove
  - ⑱ Concrete Path
  - ⑲ Aggregate Paving with Organic-Lok
  - ⑳ Brick Border
  - ㉑ Special Paving
  - ㉒ Green Screen
  - ㉓ Raised Planter
  - ㉔ Loading dock
  - ㉕ Heritage tree
  - ㉖ Floating Stage
  - ㉗ Retaining Wall
  - ㉘ Catenary Lights
  - ㉙ Bike Racks
  - ㉚ Flexi-Pave Path





# SITE - ACCESS & ENTRIES





# SITE – EXTENTS OF FENCING

The upper garden will be open to the public while the Senior Wellness Center is open.

After-hours, the perimeter gates will be locked for site security.



Existing Low Fence to Remain



Existing Black Fence to Remain



## FENCE HEIGHT KEY

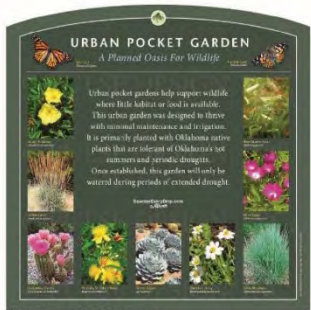
- EXISTING FENCE TO REMAIN
- PROPOSED BASKETBALL FENCE
- PROPOSED SHORT FENCE
- GATE



# SITE - WAYFINDING



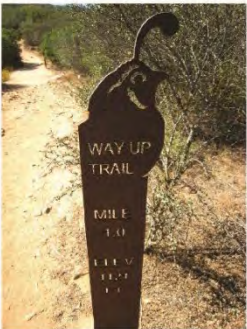
Gate & Wayfinding Signage



Educational Signage



Exercise Path Markers



ADA Accessible Entrance Path



# SITE - WAYFINDING

- Site Signage Key
- Gate Signage
  - Wayfinding Signage
  - Educational Signage
  - ADA Accessible Path





# SITE - SEATING

Seating  
● 1 Person  
Number of People: 38



Bench



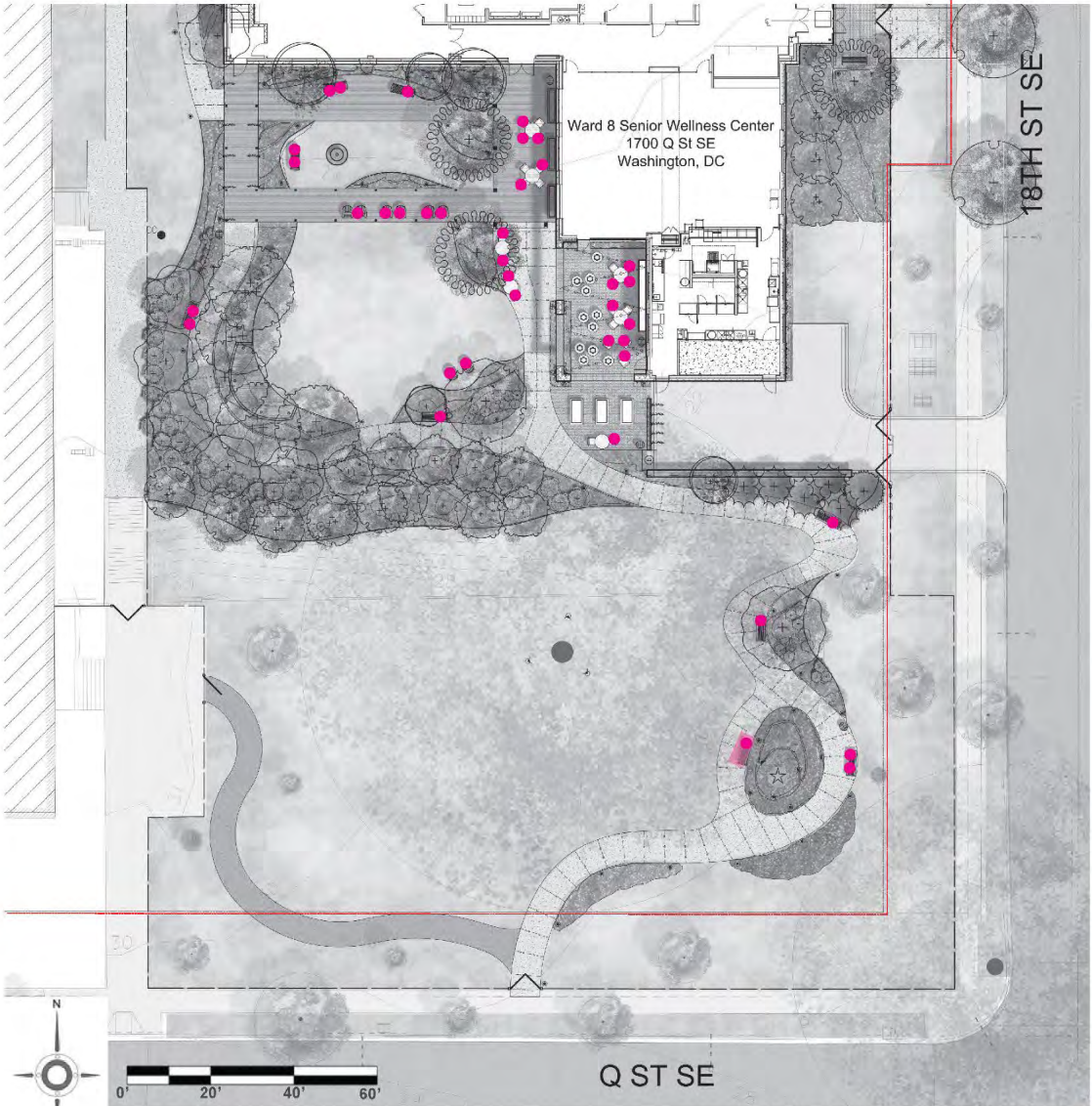
Special Bench



Dining Table & Chairs

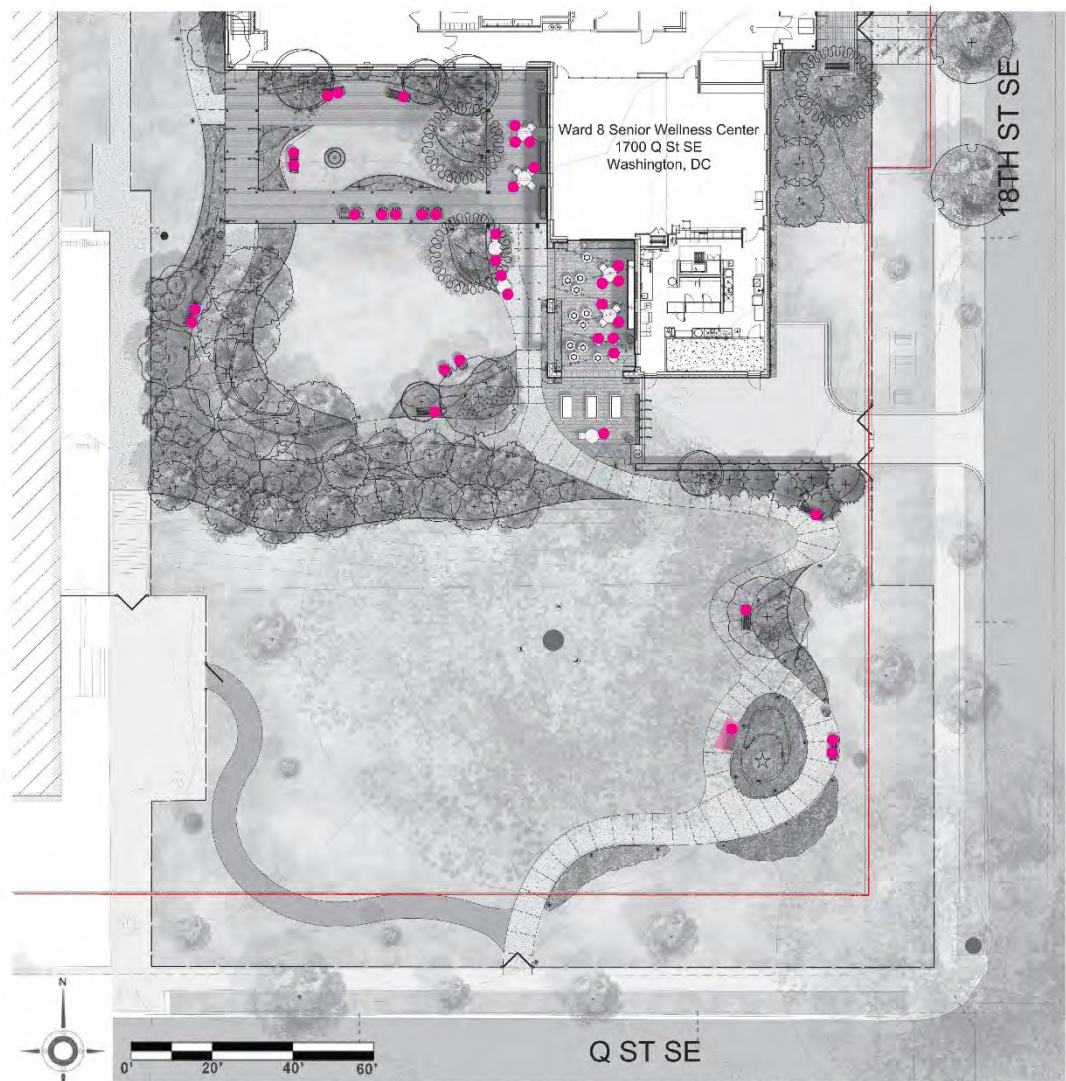


Lounge Chair





# SITE – SEATING & MENTAL HEALTH



PROGRAMMING DIAGRAM - SEATING  
WARD 8 SENIOR WELLNESS CENTER | NOVEMBER 3, 2022 Landscape Diagrams

6

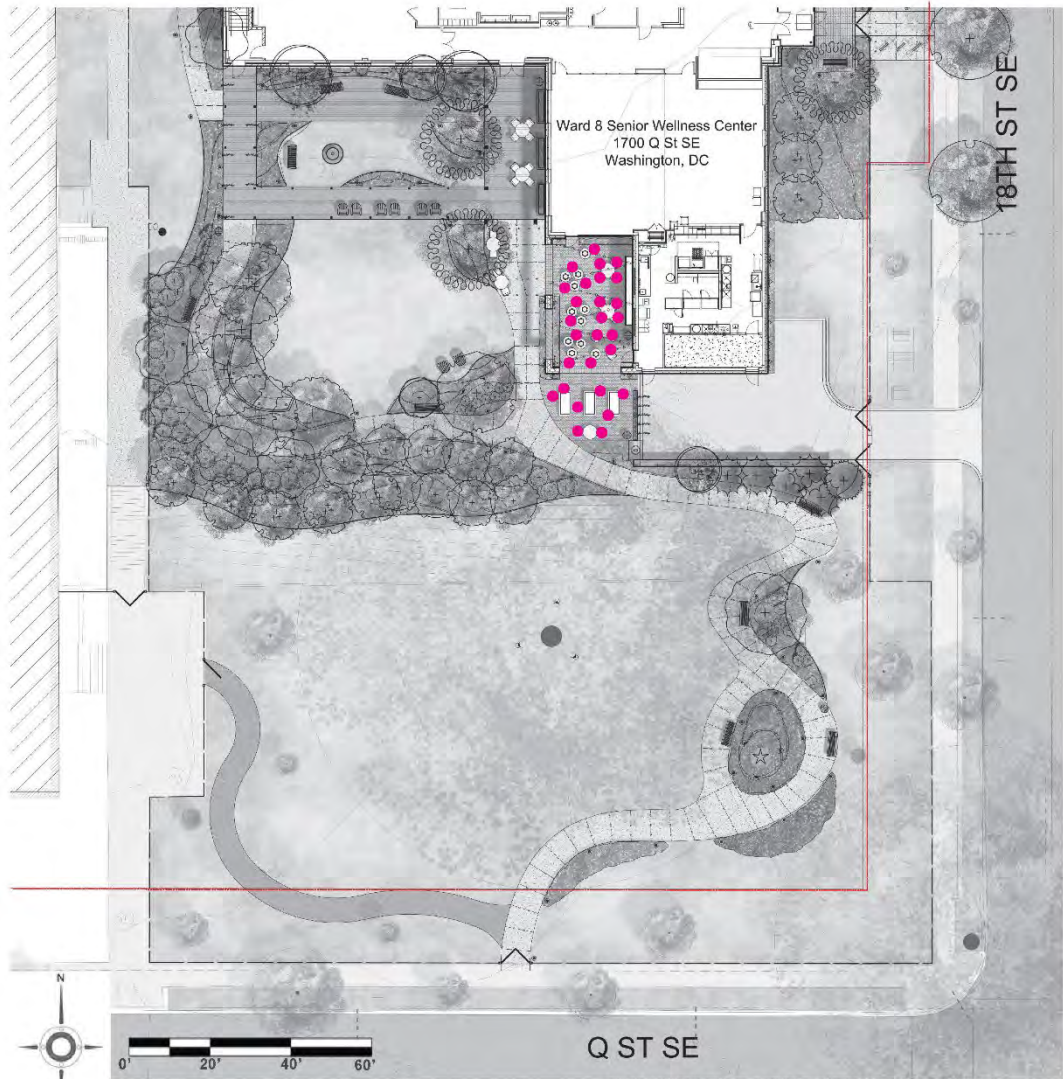


PROGRAMMING DIAGRAM - OUTDOOR MENTAL HEALTH SESSIONS  
WARD 8 SENIOR WELLNESS CENTER | NOVEMBER 3, 2022 Landscape Diagrams

17

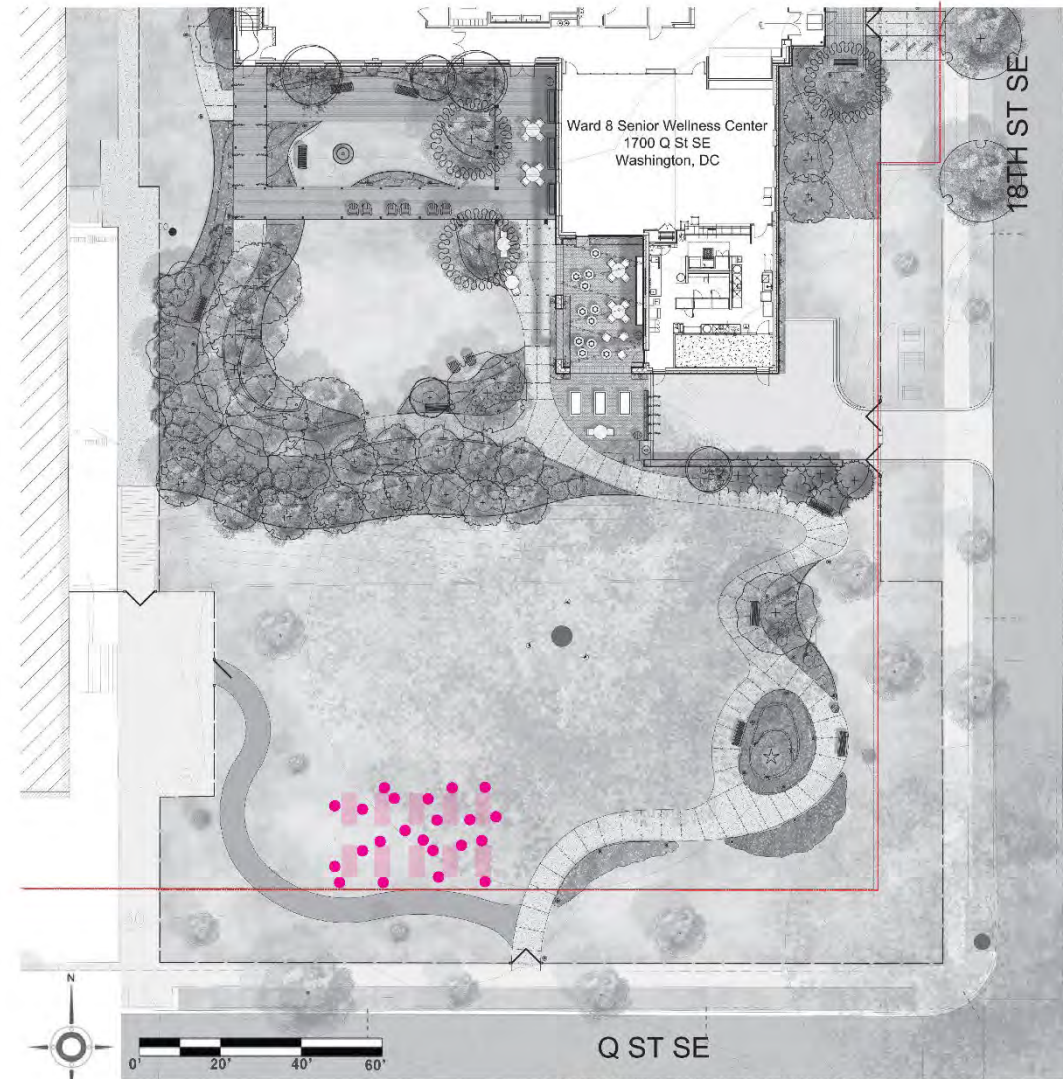


# SITE – GARDENING



WARD 8 SENIOR WELLNESS CENTER | NOVEMBER 3, 2022 Landscape Diagrams

7

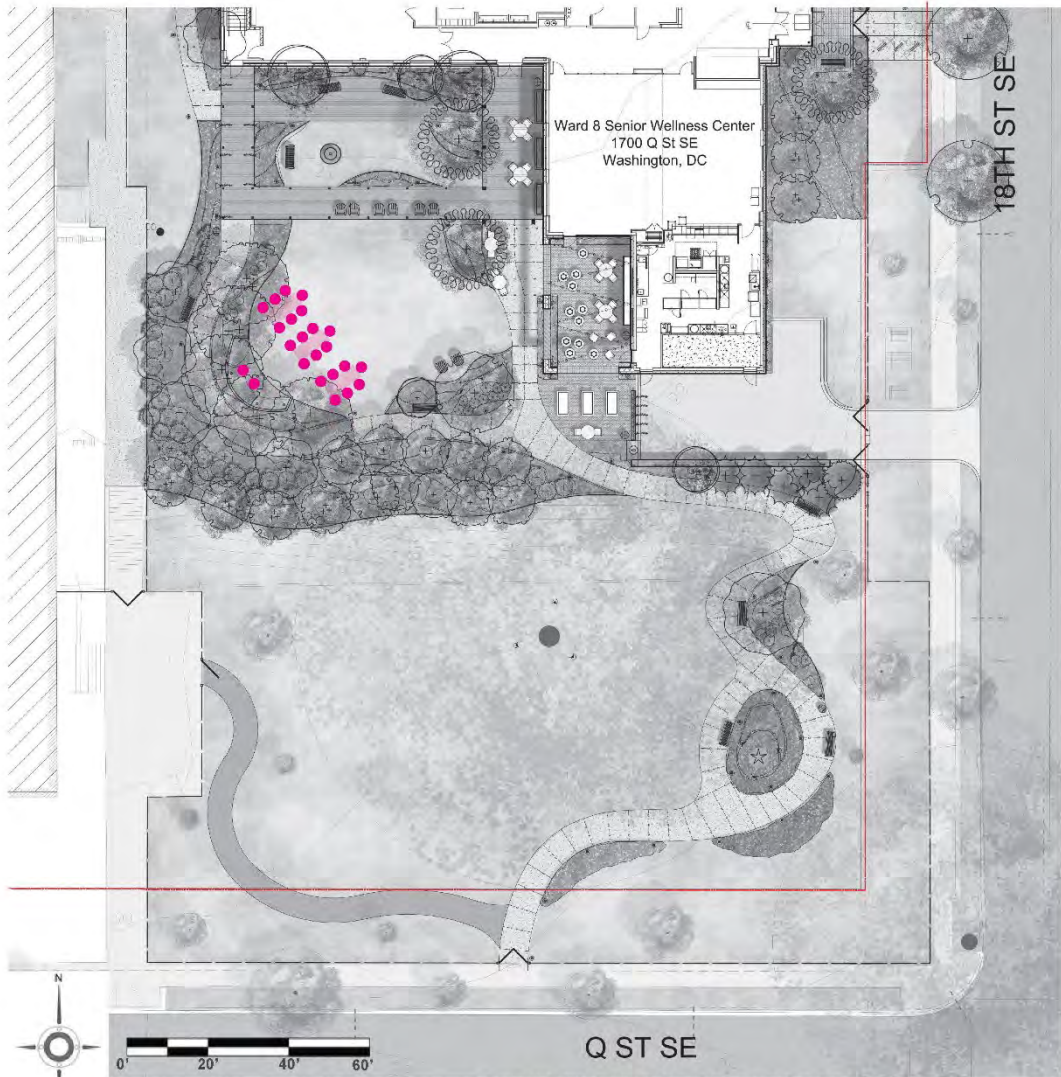


WARD 8 SENIOR WELLNESS CENTER | NOVEMBER 3, 2022 Landscape Diagrams

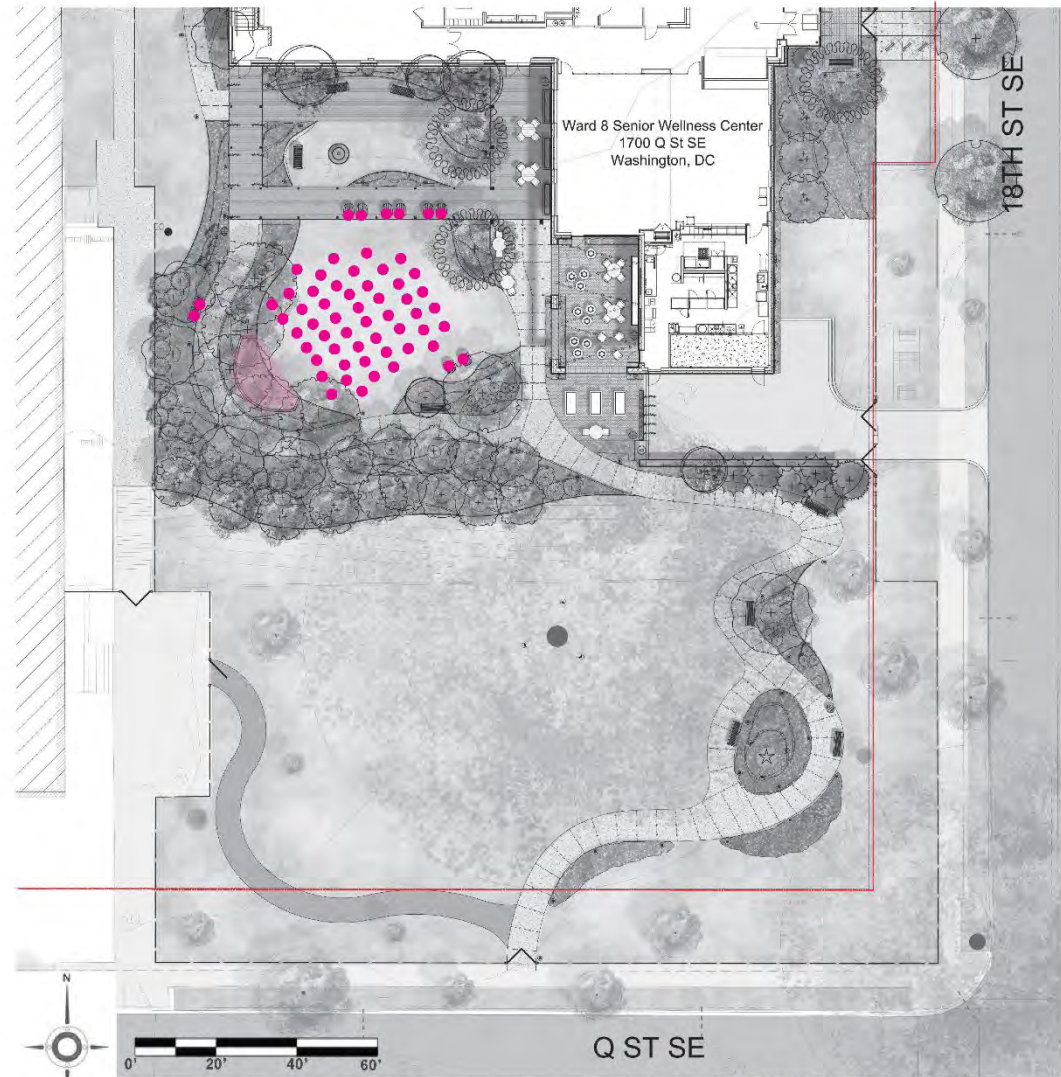
8



# SITE – CLASSES & LIVE PERFORMANCE



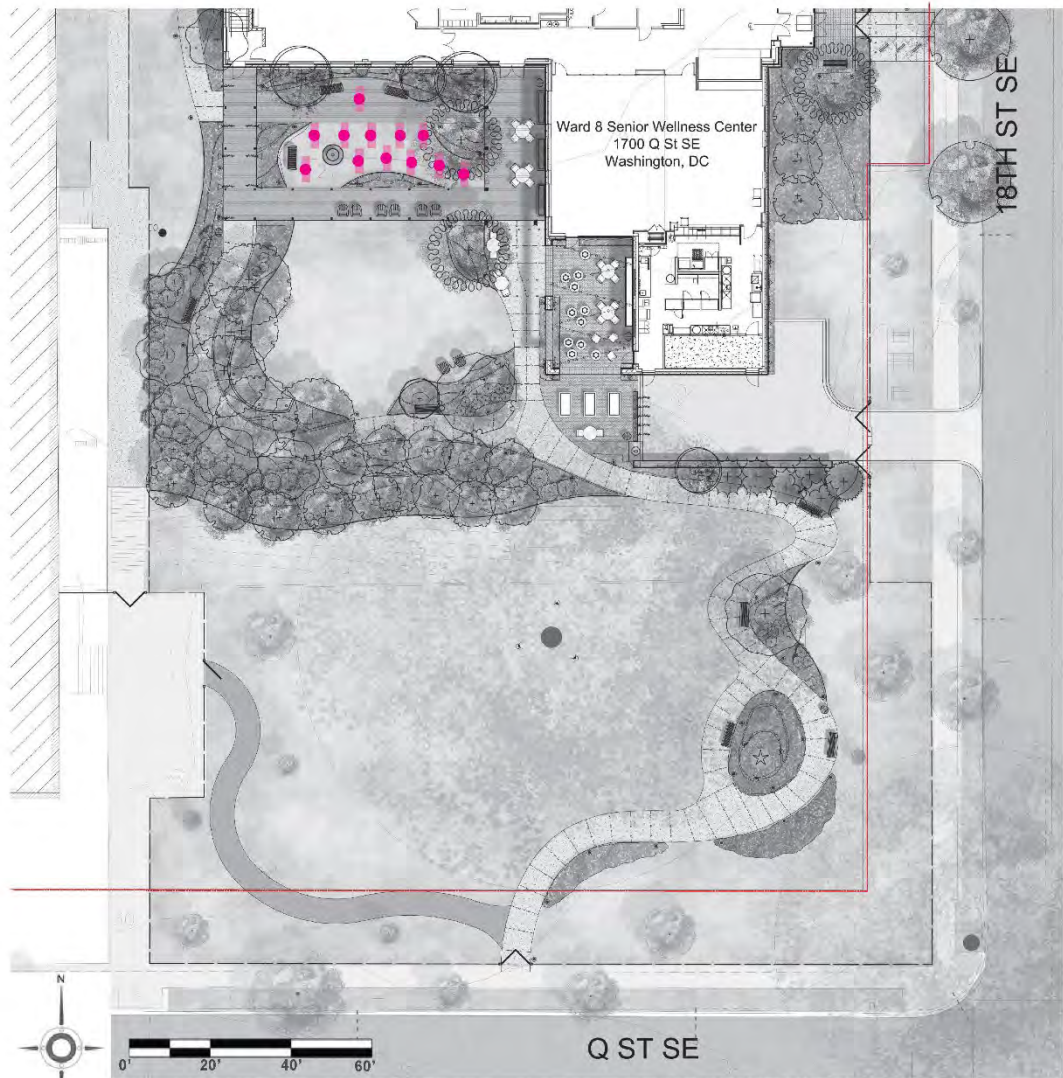
PROGRAMMING DIAGRAM - OUTDOOR CLASSES/DEMONSTRATIONS  
WARD 8 SENIOR WELLNESS CENTER | NOVEMBER 3, 2022 Landscape Diagrams



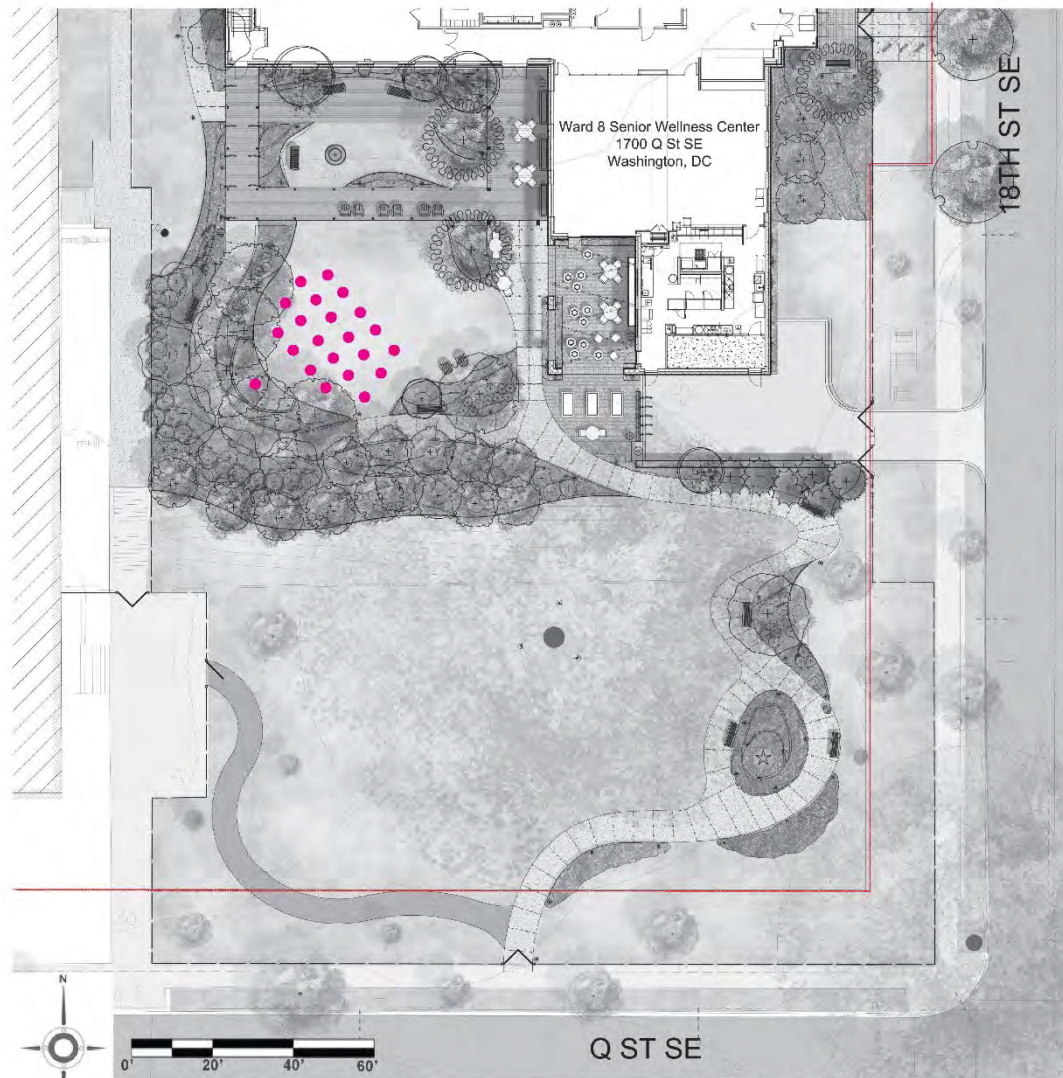
PROGRAMMING DIAGRAM - LIVE PERFORMANCE  
WARD 8 SENIOR WELLNESS CENTER | NOVEMBER 3, 2022 Landscape Diagrams



# SITE – YOGA & ZUMBA



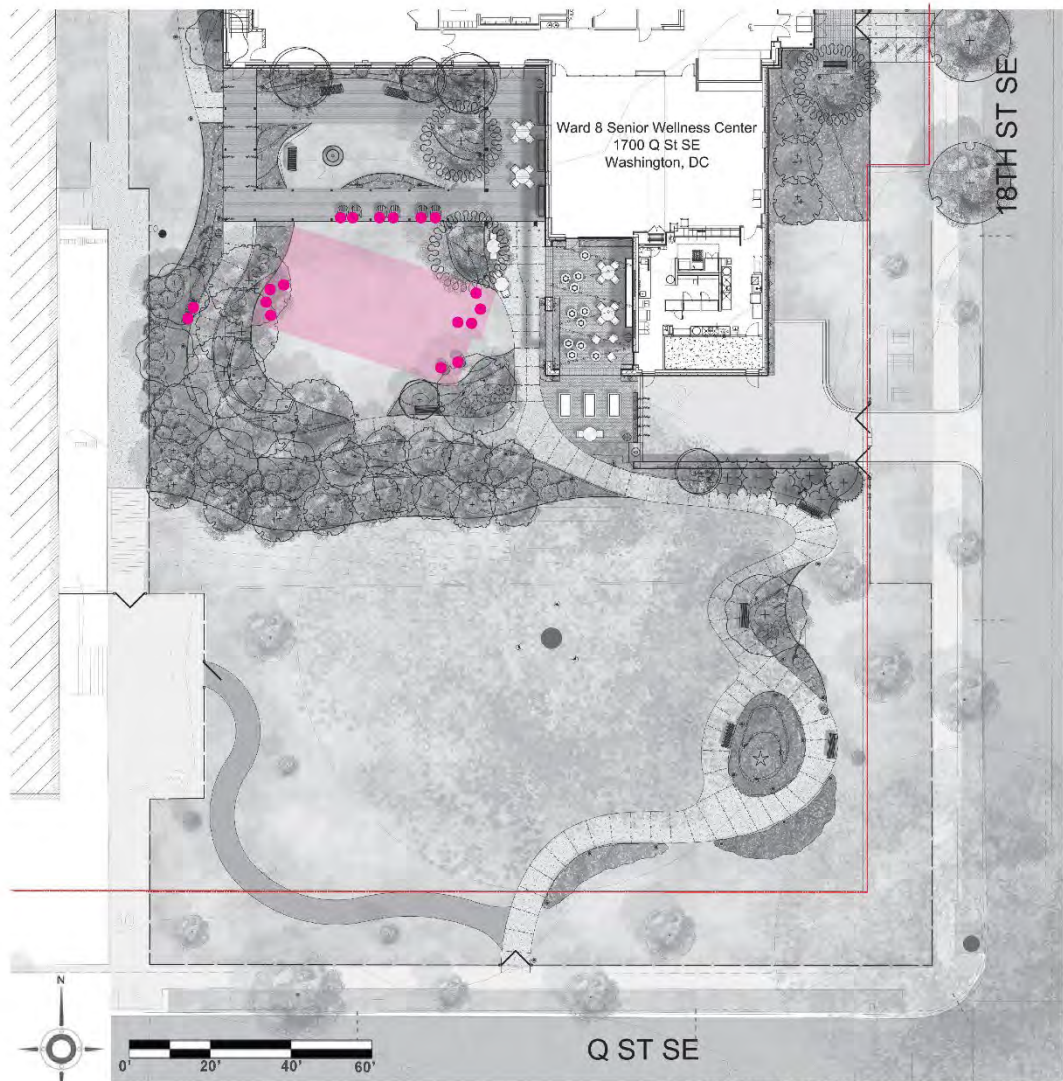
PROGRAMMING DIAGRAM - YOGA CLASSES  
WARD 8 SENIOR WELLNESS CENTER | NOVEMBER 3, 2022 Landscape Diagrams 10



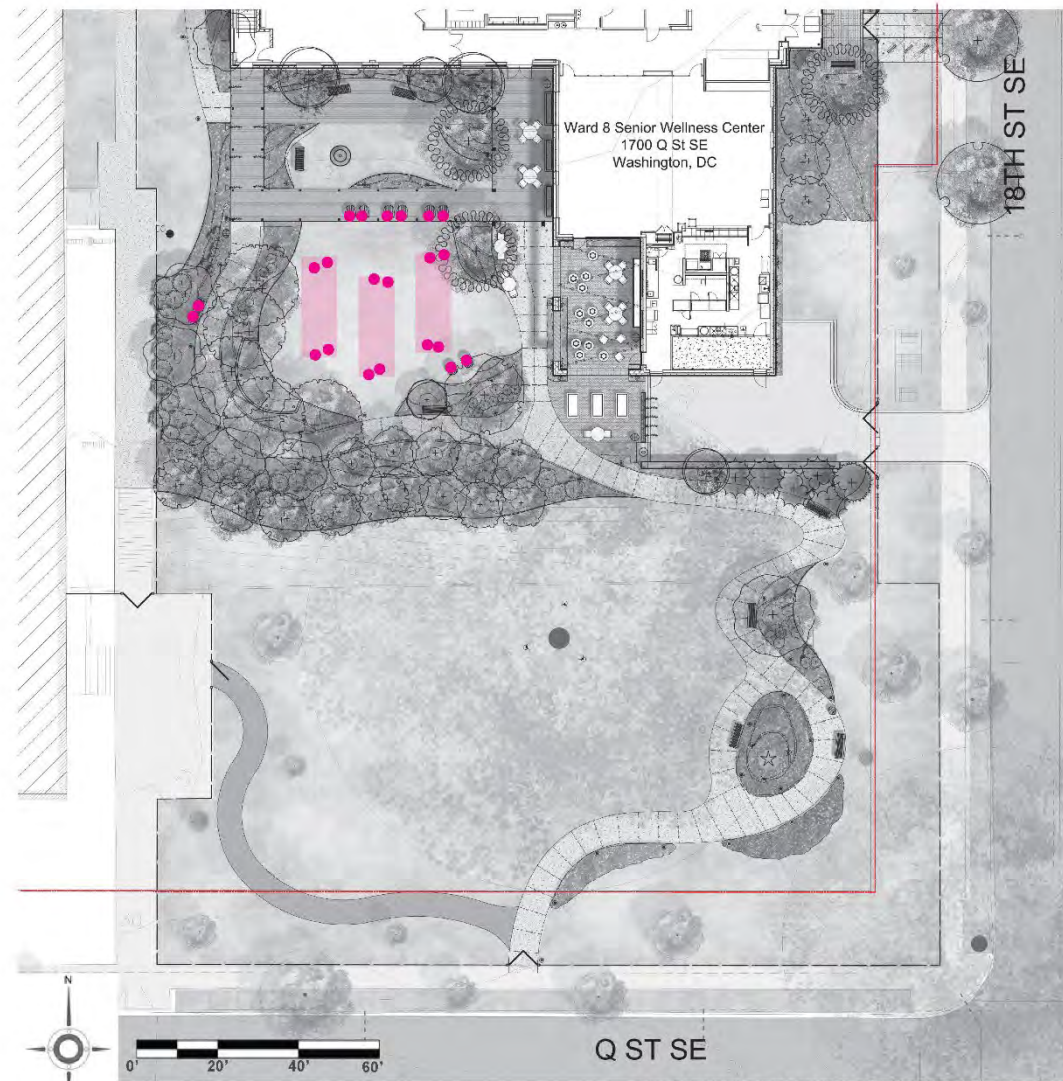
PROGRAMMING DIAGRAM - ZUMBA CLASS  
WARD 8 SENIOR WELLNESS CENTER | NOVEMBER 3, 2022 Landscape Diagrams 12



# SITE – BOCCE AND CORN HOLE



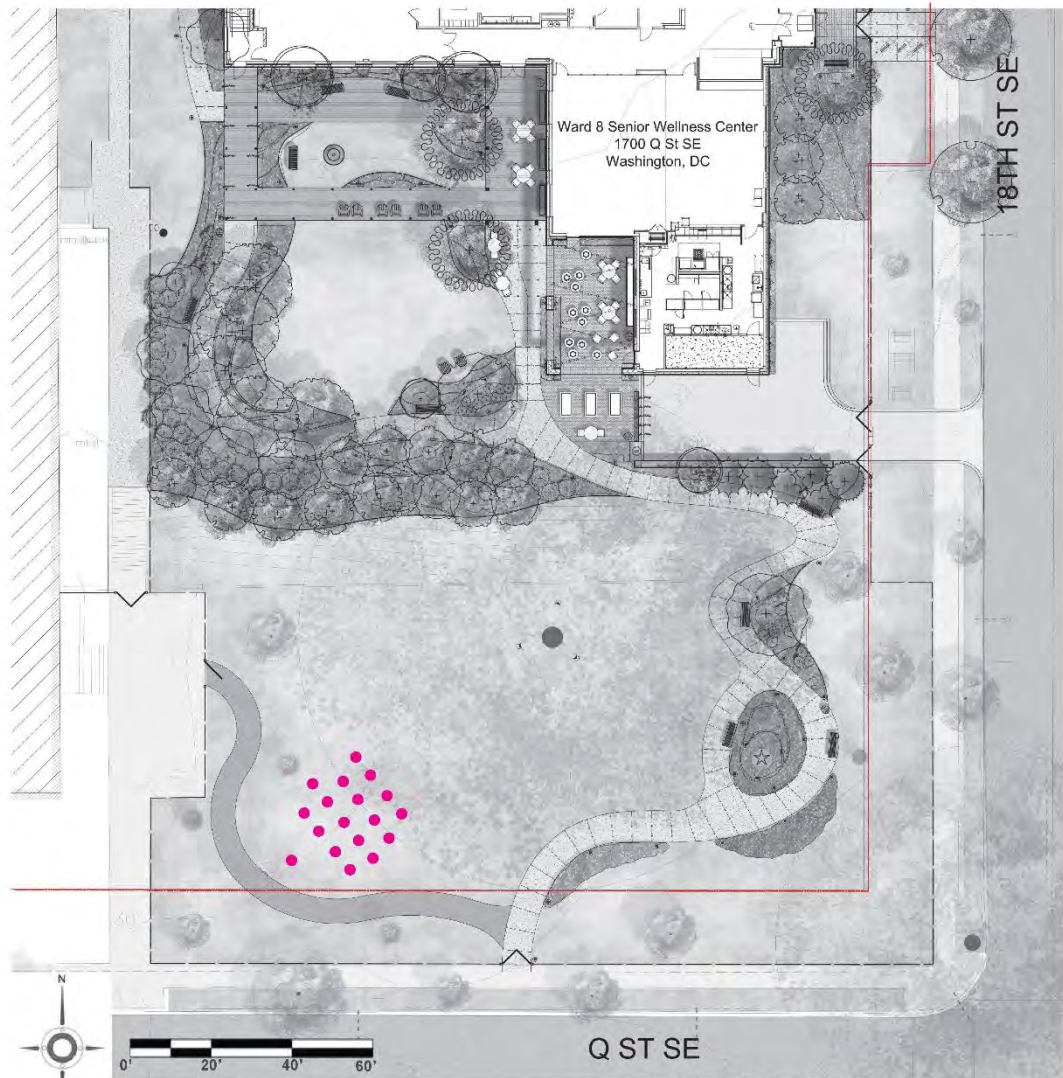
PROGRAMMING DIAGRAM - BOCCE GAMES  
WARD 8 SENIOR WELLNESS CENTER | NOVEMBER 3, 2022 Landscape Diagrams 13



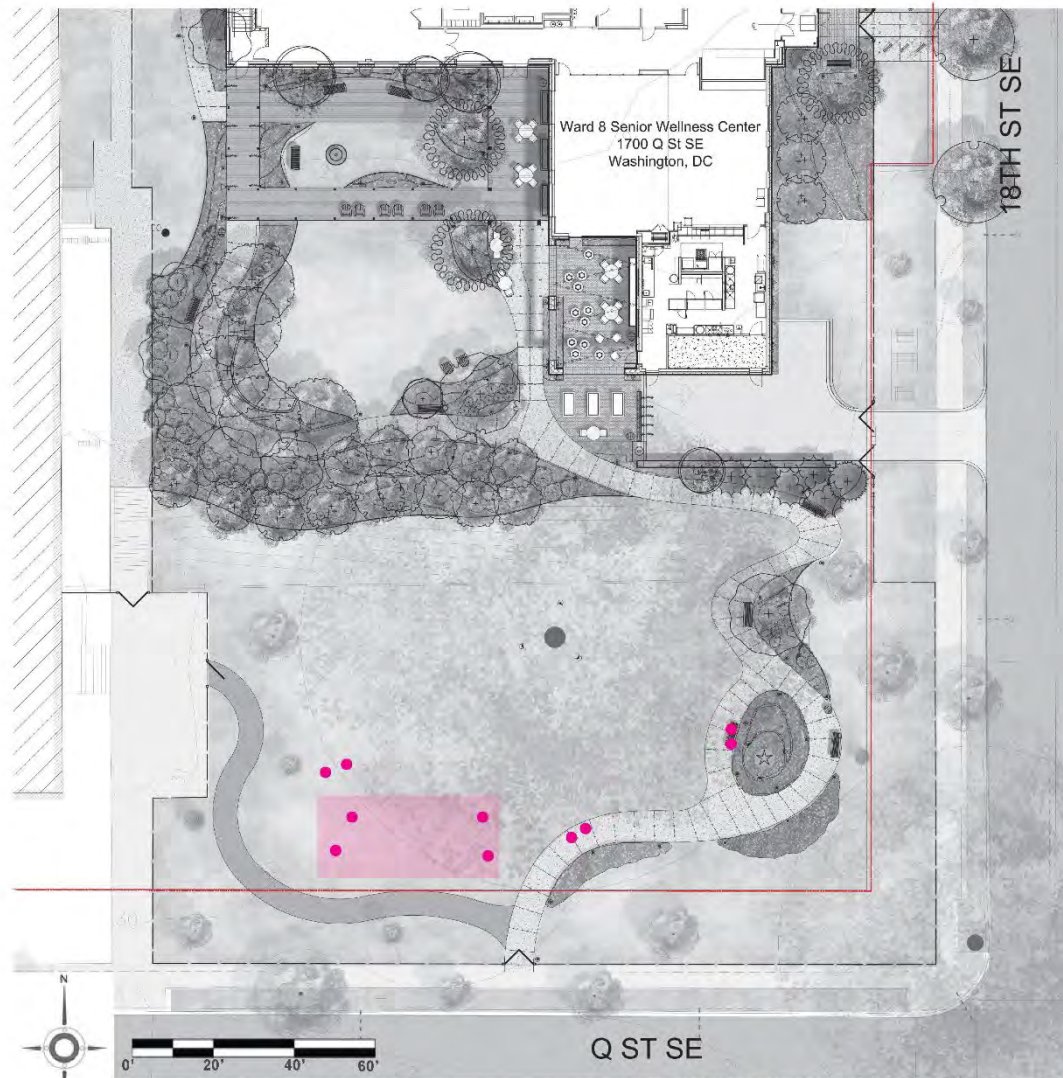
PROGRAMMING DIAGRAM - CORN HOLE GAMES  
WARD 8 SENIOR WELLNESS CENTER | NOVEMBER 3, 2022 Landscape Diagrams 14



# SITE – OUTDOOR EXERCISE & BADMINTON



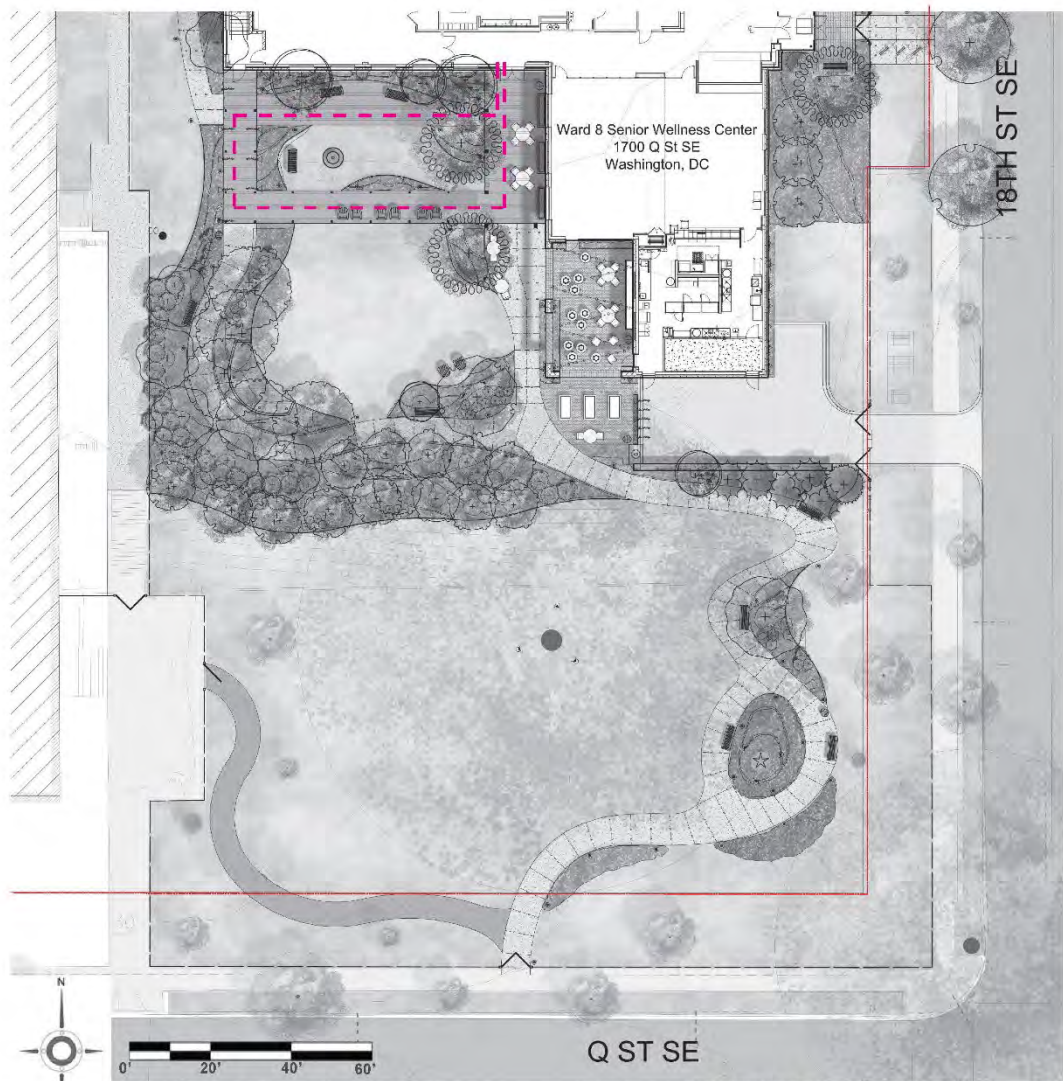
PROGRAMMING DIAGRAM - OUTDOOR EXERCISE  
WARD 8 SENIOR WELLNESS CENTER | NOVEMBER 3, 2022 Landscape Diagrams 11



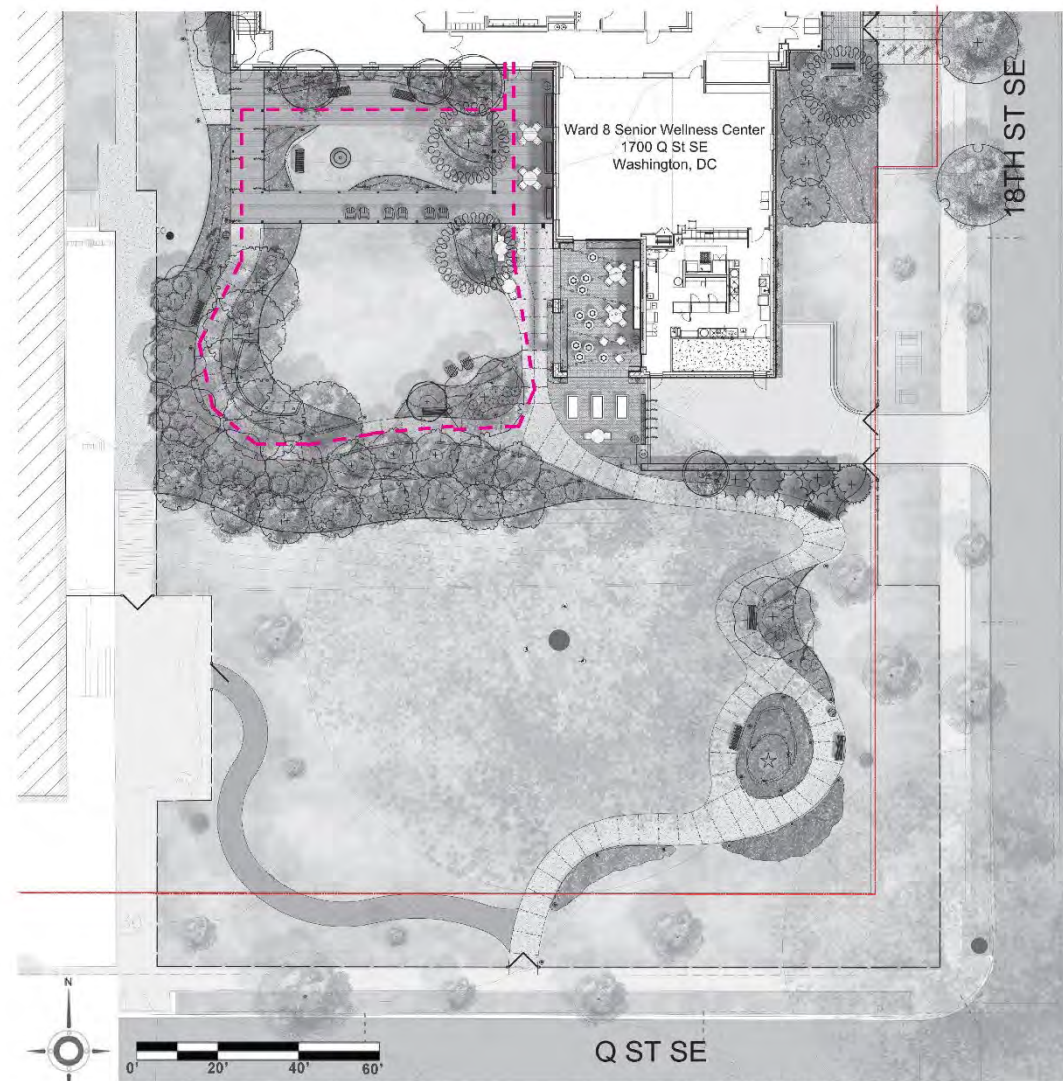
PROGRAMMING DIAGRAM - BADMINTON GAMES  
WARD 8 SENIOR WELLNESS CENTER | NOVEMBER 3, 2022 Landscape Diagrams 15



# SITE – WALKING PATHS



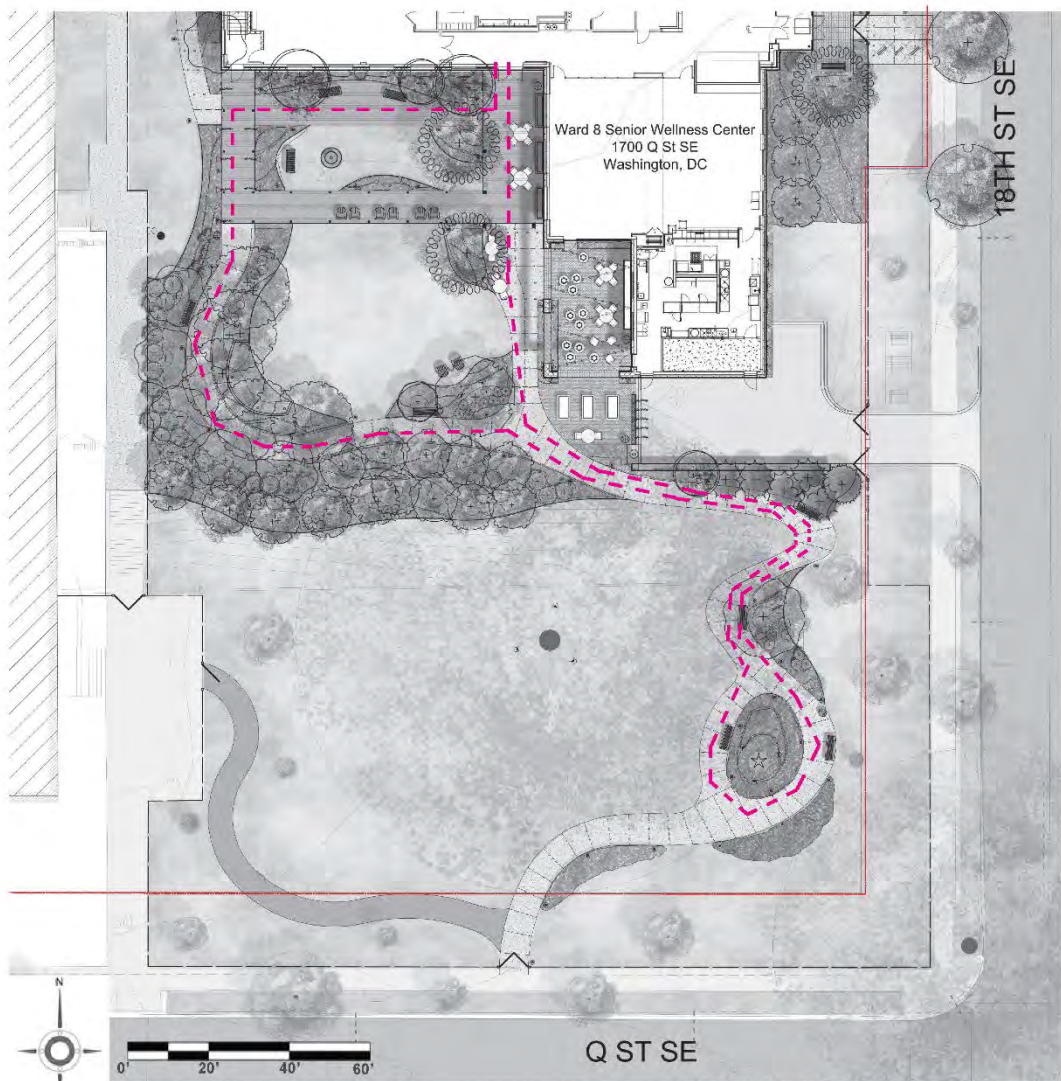
WARD 8 SENIOR WELLNESS CENTER | NOVEMBER 3, 2022 Landscape Diagrams



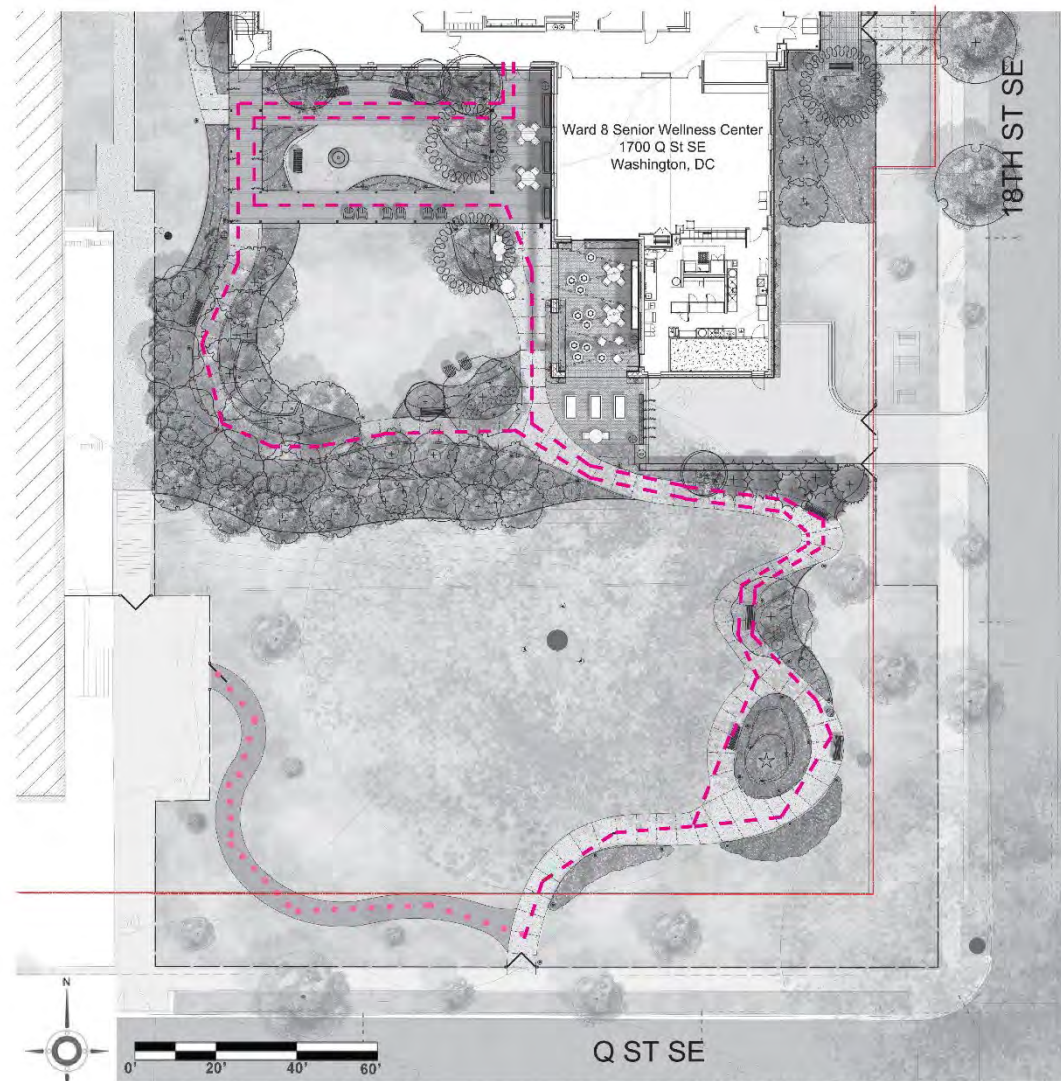
WARD 8 SENIOR WELLNESS CENTER | NOVEMBER 3, 2022 Landscape Diagrams



# SITE – WALKING PATHS



WARD 8 SENIOR WELLNESS CENTER | NOVEMBER 3, 2022 Landscape Diagrams 22



WARD 8 SENIOR WELLNESS CENTER | NOVEMBER 3, 2022 Landscape Diagrams 23



# PERSPECTIVES

18<sup>TH</sup> STREET SE





# PERSPECTIVES

MAIN ENTRANCE





# PERSPECTIVES





# PERSPECTIVES

MINOR COURTYARD





# PERSPECTIVES





# PERSPECTIVES



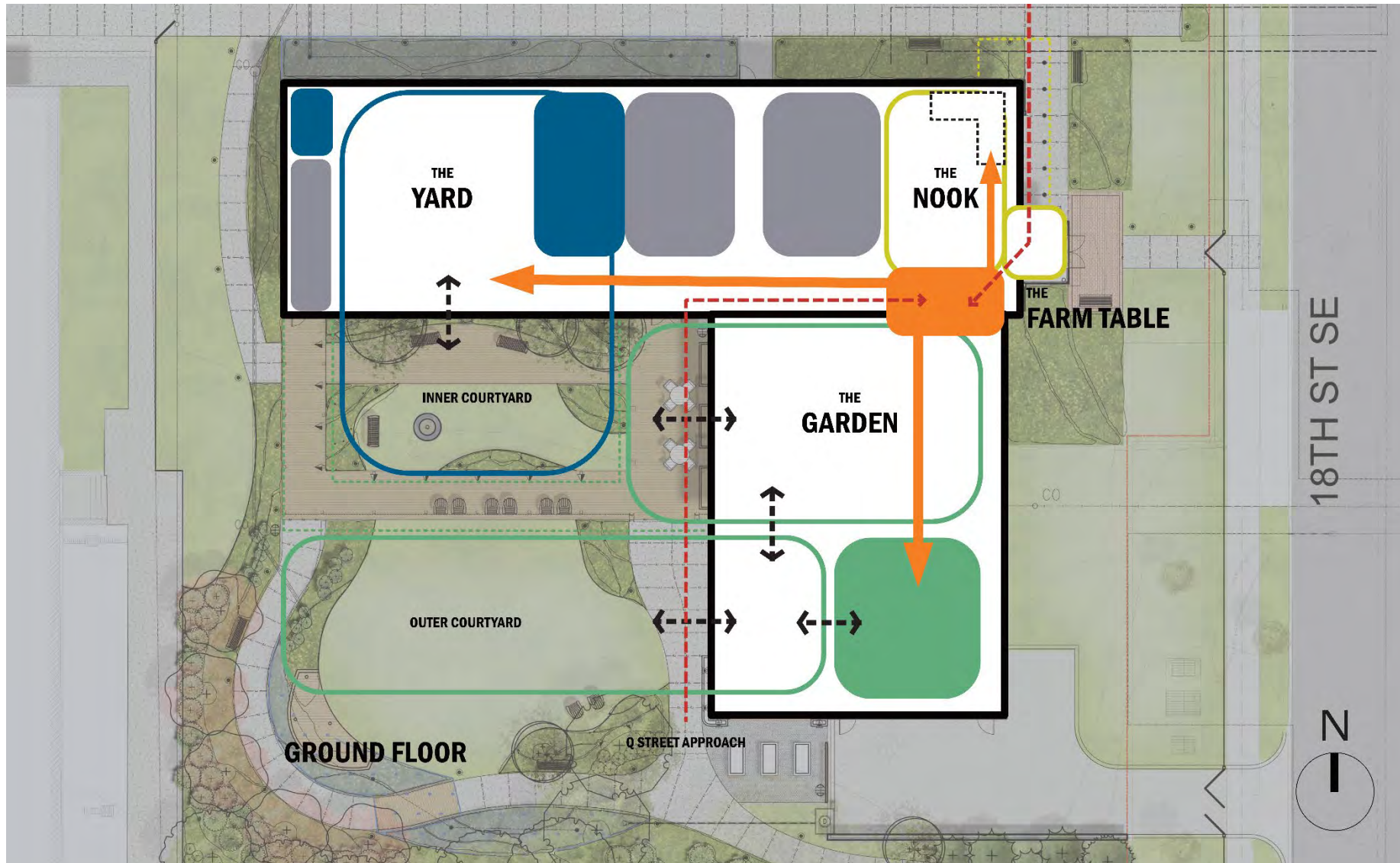


# PERSPECTIVES





# CONNECTED PLACES





# **PERKINS EASTMAN DC**

---

D E S I G N I N G   T H E   D I S T R I C T