



FY23 Public Art Building Communities Grantee:

Southwest Business Improvement District
*"GALLERY OF SOUTHWEST: CELEBRATING THE PAST,
PRESENT, AND FUTURE"*

CFA Review Meeting: November 17, 2022

Submission Date: November 3, 2022

Grantee: Southwest Business Improvement District
Project Name: *GALLERY OF SOUTHWEST: CELEBRATING THE PAST, PRESENT, AND FUTURE*
Artist(s): Chelsea Ritter-Soronen, Juan Pineda aka CRI, David Carmack Lewis, Ham and Cheese, Jarrett Ferrier, Jesse Kirsch, Kaliq N Crosby aka KaliQ, Luther Wright, Sasha Reisin aka Primo, (Rodrigo Pradel, Michael Pacheco, Monica Tucker-Harley, Sarah Berry aka RoMiMoSa) and Rose Jaffe
Where: 500-600 4th Street SW 20024 - 395 underpass
Ward: 6
Type: Permanent
Twelve 12 murals painted in upper portion of underpass beneath I-395.


Located in the underpass beneath I-395, this project will serve as a cultural portal that will physically reconnect two portions of Southwest severed by the interstate more than 50 years ago. The subtle indentations that currently line the underpass walls will be transformed into a gallery that heralds the Southwest community's culture, resurfaces its history and shares its joy with those passing through.

As designed, this project will bring commissioned street art to adorn the underbelly of the 4th Street SW underpass. The art reflects the history, culture, people, and future of Southwest DC from the perspective of 11 different artist groups in the form of 12 unique, high-quality murals. The power of the artists' thoughtful concepts and brush of brilliance will be included in a QR code that will link to the SWBID website providing more detailed background and descriptions.

Southwest Washington DC

An Arts and Cultural Destination

SOUTHWEST NEIGHBORHOOD PLAN


Government of the
District of Columbia
Muriel Bowser, Mayor
DC Office of Planning
Council Approved R21-0128
July 14, 2015

CONCEPT | ARTS AND CULTURAL DESTINATION

VISION: Southwest will flourish as a premier arts and cultural destination, creating synergies between existing cultural assets and attracting new creative uses and arts-related activities.

ACTION		GUIDING PRINCIPLES ADDRESSED	TIMELINE	LEAD AGENCY	PARTNER AGENCY
AC.1	Foster the Southwest neighborhood arts hub by expanding events, such as Jazz Night at Westminster, Southwest Night at Arena Stage, activities with Blind Whino, and future events with the proposed Rubell Museum at the Randall School.	6	Short Term	SW BID	Southwest Arts Organizations
AC.2	Promote the arts as a community amenity in neighborhood marketing materials and communicate current and planned activities involving the arts to residents throughout the District of Columbia. Develop a single source to advertise and promote all arts events in one place for easier access and more effective marketing.	6	Short to Mid Term	SW BID	DCOP
AC.3	Renovate the Randall Recreation Center to support both recreation and multi-purpose arts focused programming while maintaining existing playing fields and greenspaces.	5, 6	Mid Term	SW BID	ANC
AC.4	Market the required affordable units in the new Randall School development to artists who meet the affordability requirements.	6, 7	Short to Mid Term	Randall School Development Team	DCHA
AC.5	Encourage the creation of incubator space for local arts organizations or other creative entrepreneurs (e.g., web designers, film editing, production, culinary space, etc.) or local business start-ups on the ground floors of new buildings on M and 'I' Streets.	4, 6	Long Term	DMPED, WDCEP	DCOP
AC.6	Initiate a pilot improvement project for at least one underpass to include unique public art and lighting.	3, 6	Short Term	DCOP	DCCA, Underpass Owner
AC.7	Support the use grants, pilot programming or public/private partnerships to help fund "pop-up" programming, short-term events and other efforts by the Neighbors of the Southwest Duck Pond to expand activities in this location.	5, 6	Short to Mid Term	DCOP	Community Groups, Southwest Duck Pond

Arts in the Public Realm. The Southwest neighborhood can reinforce its identity as an arts and culture destination by manifesting the arts in the public realm. Temporary installations, "pop-up" programming, and events can be focused around the Southwest Duck Pond and vacant parcels and retail spaces along 4th Street SW. Underpasses have long stood as a neighborhood barrier that may be significantly enhanced through incorporation of public art and lighting.

Reclaimed Connections. Urban Renewal and the Modernist designs that followed it left an indelible mark on the block structure of Southwest, which many residents appreciate for the internalized residential communities it forged. However, the restoration of the L'Enfant street grid in strategic locations that do not impact existing residences will enhance the mobility and ease of walking through the neighborhood. In particular, the government-owned parcels around Lansburgh Park offer the opportunity to restore mapped streets when redeveloped in the future. These streets will also bring additional activity and visibility to a now "hidden" park asset. Southwest can also tackle the unpleasant experience of traversing underpasses of the I-395 and CSX rights of way by ensuring appropriate lighting and regular maintenance and cleaning, as well as piloting public art interventions.

Southwest Washington DC

Site Context

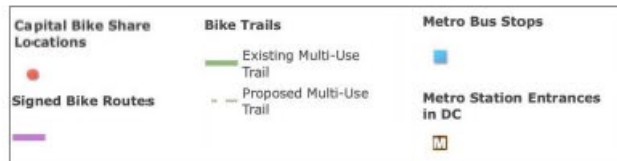


Southwest Washington DC

Site Context



TRANSPORTATION



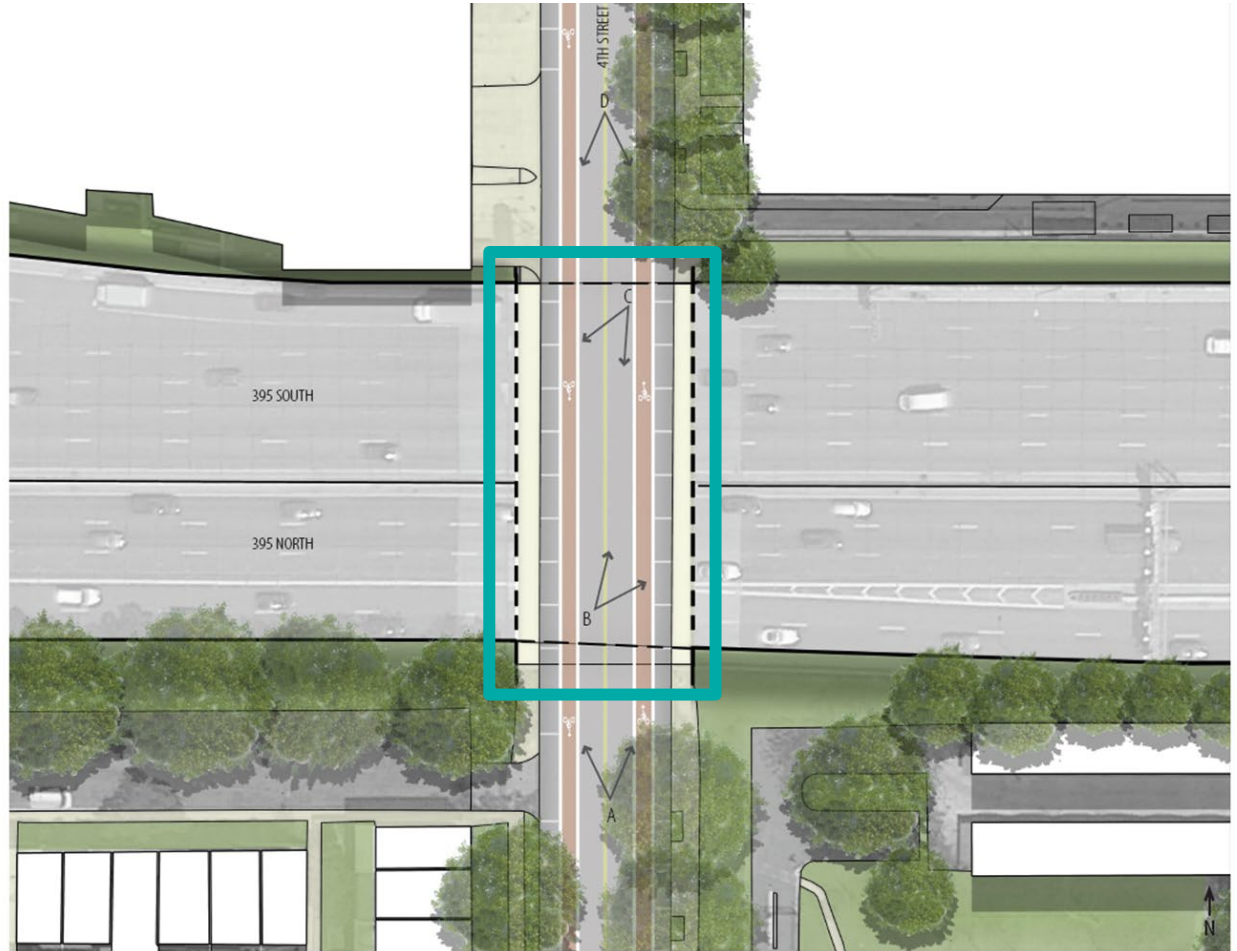
LAND USE



STREET LIGHTS

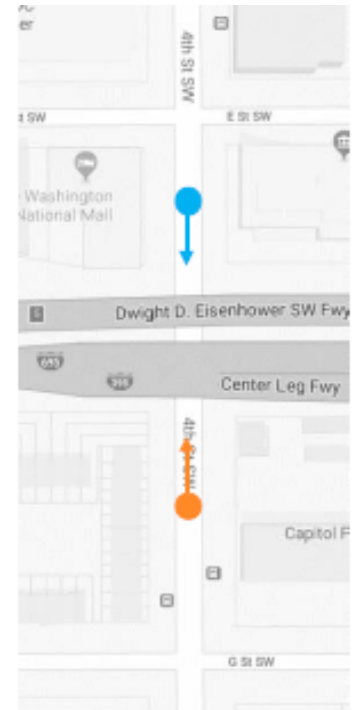
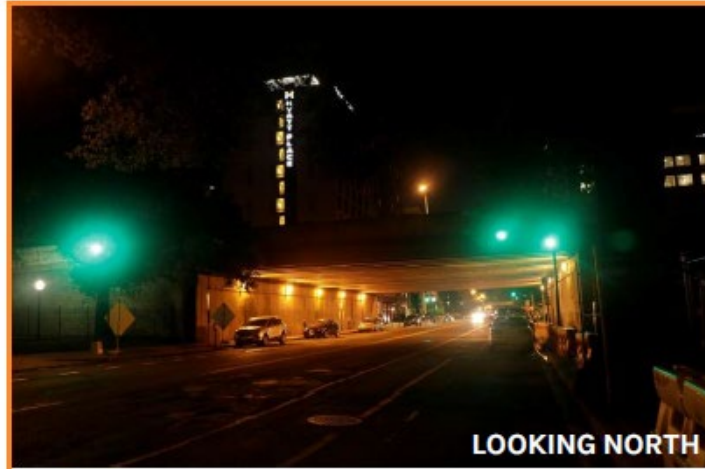
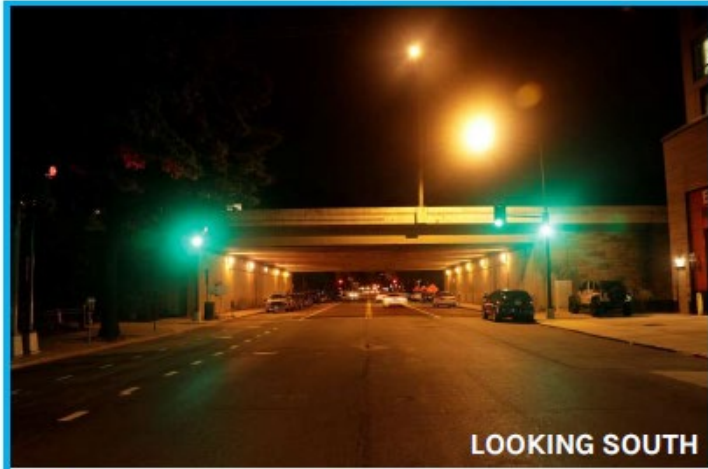
4th Street Underpass

Existing Conditions



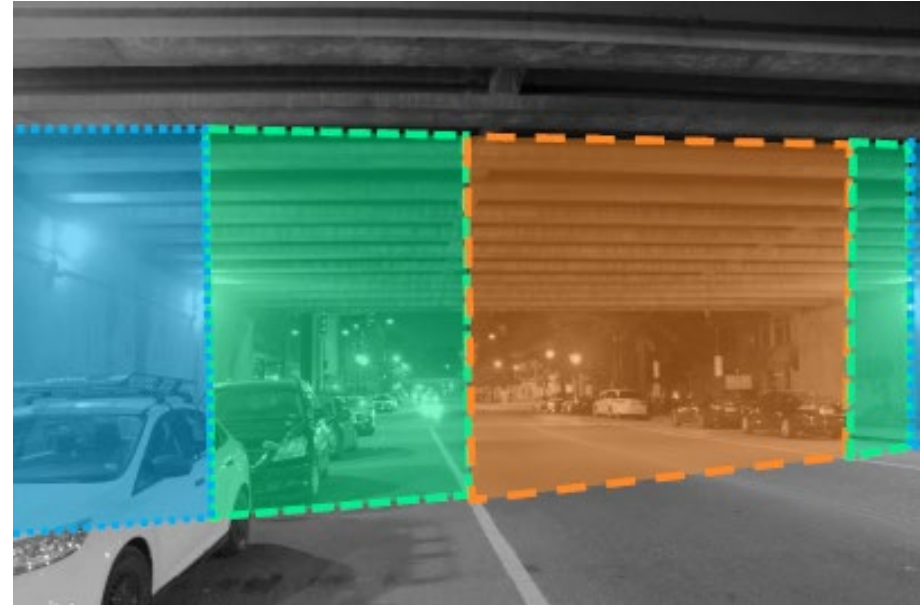
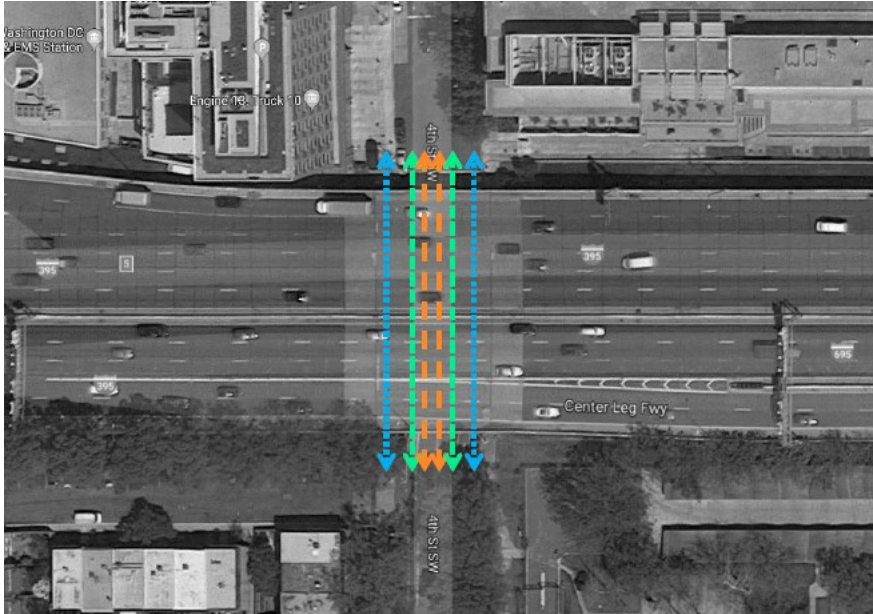
4th Street Underpass


Existing Conditions




4th Street Underpass

Modalities of Movement



Pedestrian (sidewalk) 
• 38 - 60 seconds

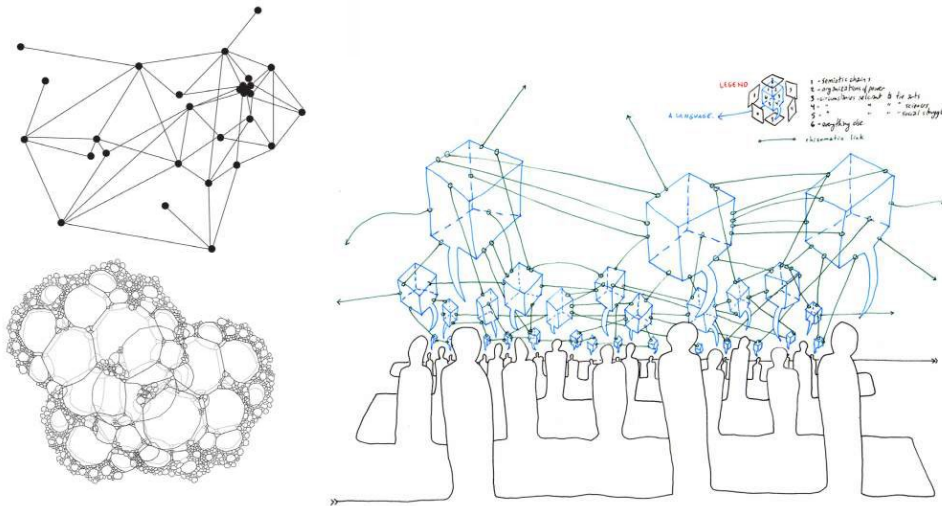
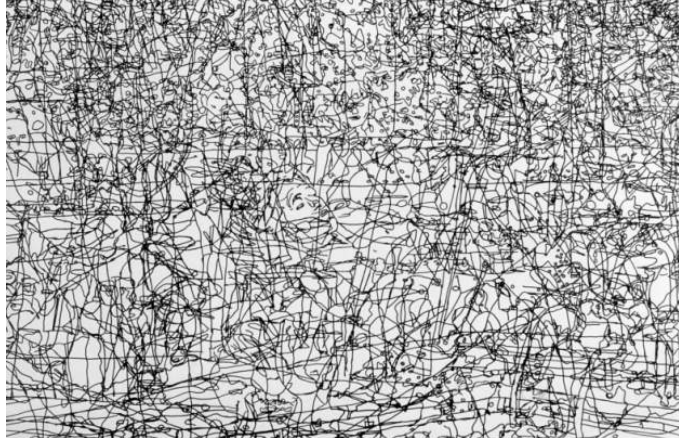


Bicycle (bicycle lane) 
• 8 - 10 seconds



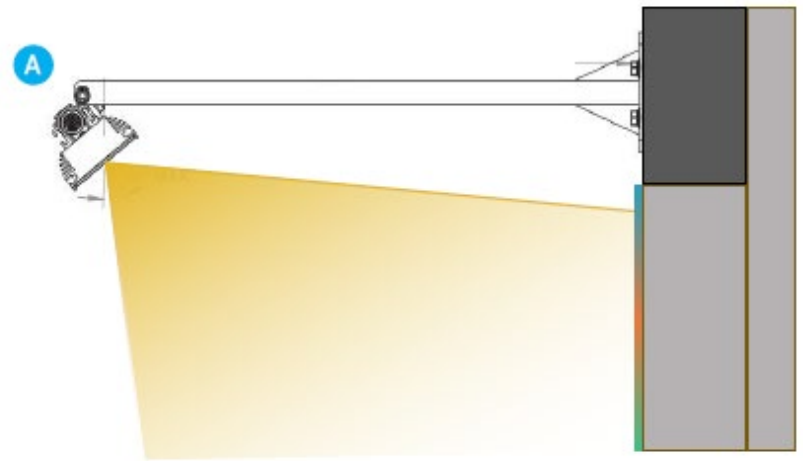
Vehicle (driving lane) 
• 4 - 5 seconds

Connecting Portals



4th Street Underpass

Art Portal - Illumination (with concept art)



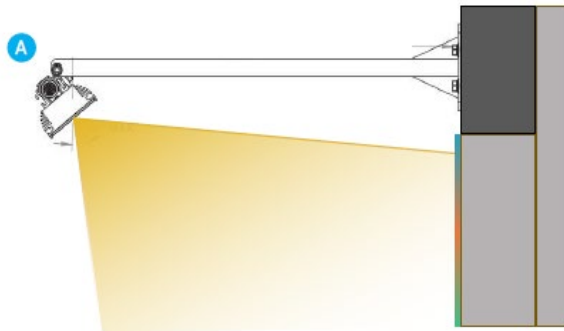
4th Street Underpass

Art Portal - Illumination

No Art Lighting (Concept Art)



With Art Lighting (Concept Art)

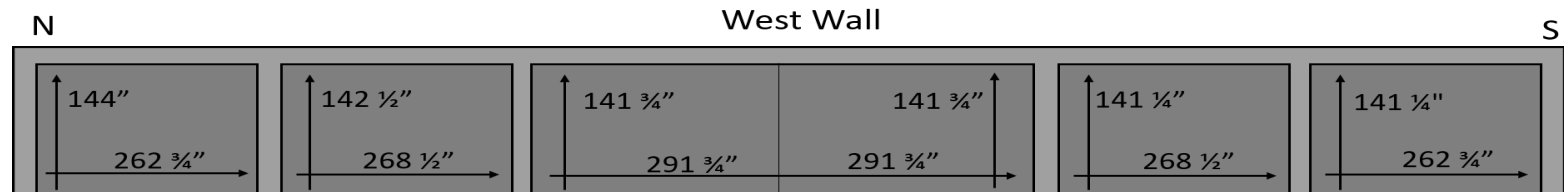
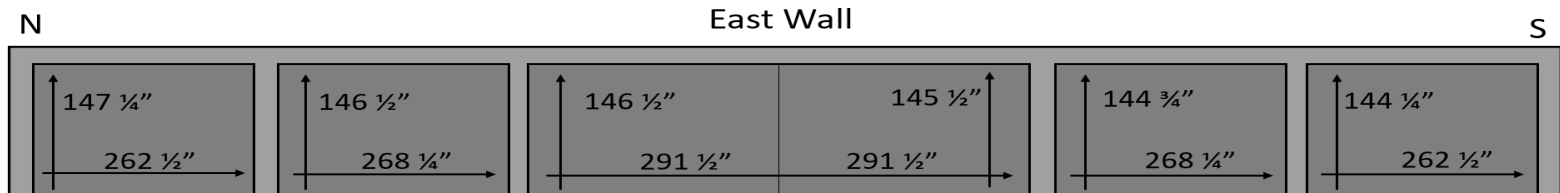


FIXTURES:
GVA STR9 Linear
RGBW



4th Street Underpass

Art Portal - *Gallery of Southwest*



4th Street Underpass

Art Portal - *Gallery of Southwest: Celebrating the Past, Present, & Future* Final Artwork



East Wall



West Wall

4th Street Underpass

Art Portal - *Gallery of Southwest Detail*



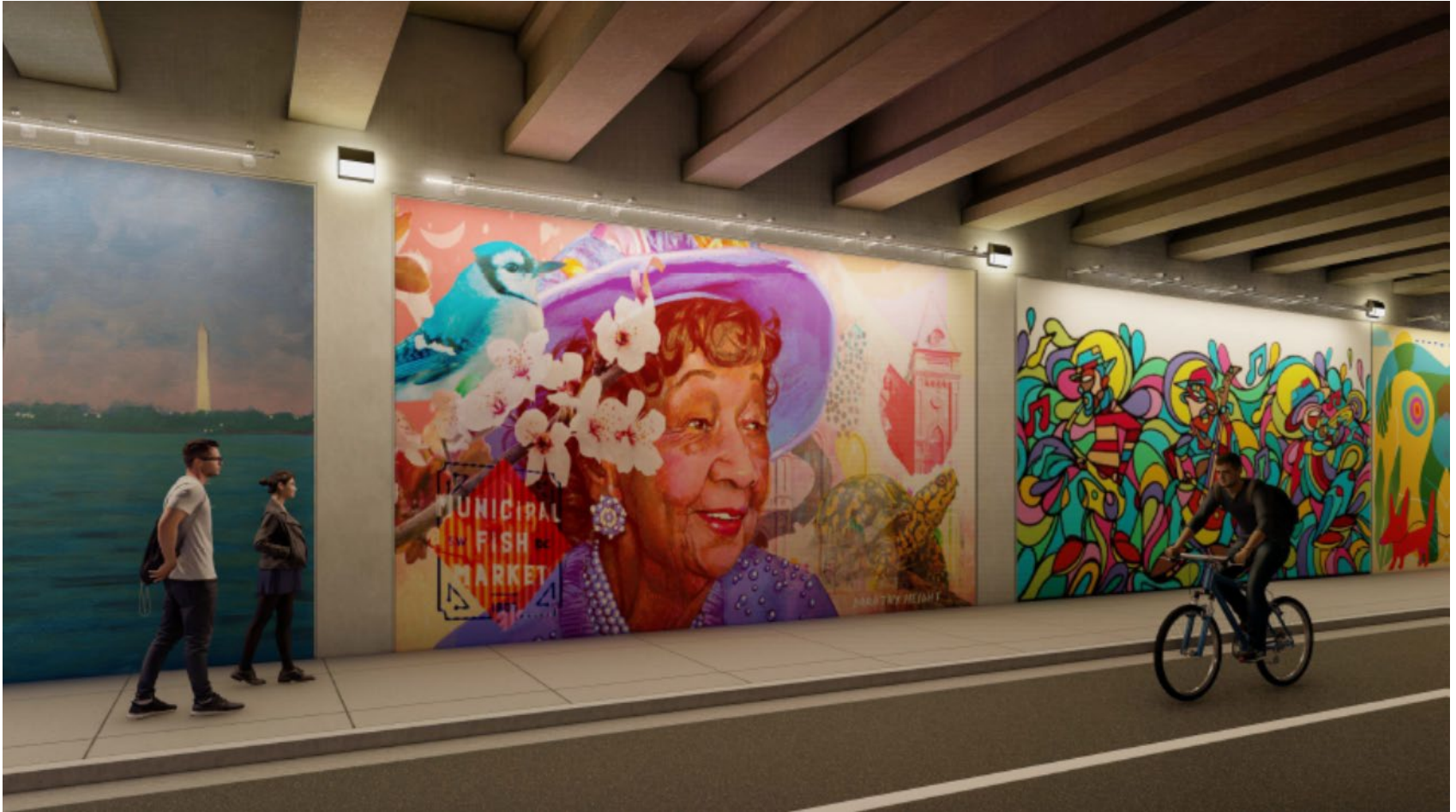
4th Street Underpass

Art Portal - *Gallery of Southwest Detail*



4th Street Underpass

Art Portal - *Gallery of Southwest Detail*



4th Street Underpass

Art Portal - *Gallery of Southwest Detail*



Gallery of Southwest

Artwork Selection Process

Request for Qualifications

- 46 responses
- Worldwide applications
- Criteria
 - Letter of intent
 - Artistic content
 - Capacity - understanding of project & previous experience

Request for Proposals

- 15 applications
- Criteria
 - Artistic content
 - Connection to community
 - Capacity
- Looked for diversity in designs and artists

Finalists

- 11 artists
 - 5 DC-based artists
 - 4 within 20 miles of DC



JARRETT FARRIER





KALIQ

Southwest Soldier





ROSE JAFFE



LUTHER WRIGHT



SASHA REISIN AKA PRIMO





DAVID CARMACK LEWIS

Deadrise





JESSE KIRSH AKA NO PRESS PLAN



CRIMATIC



CHELSEA RITTER-SORONEN





HAM AND CHEESE STUDIO





RIMIMOSA

PRESENT & FUTURE: Culture, Play, and Preservation



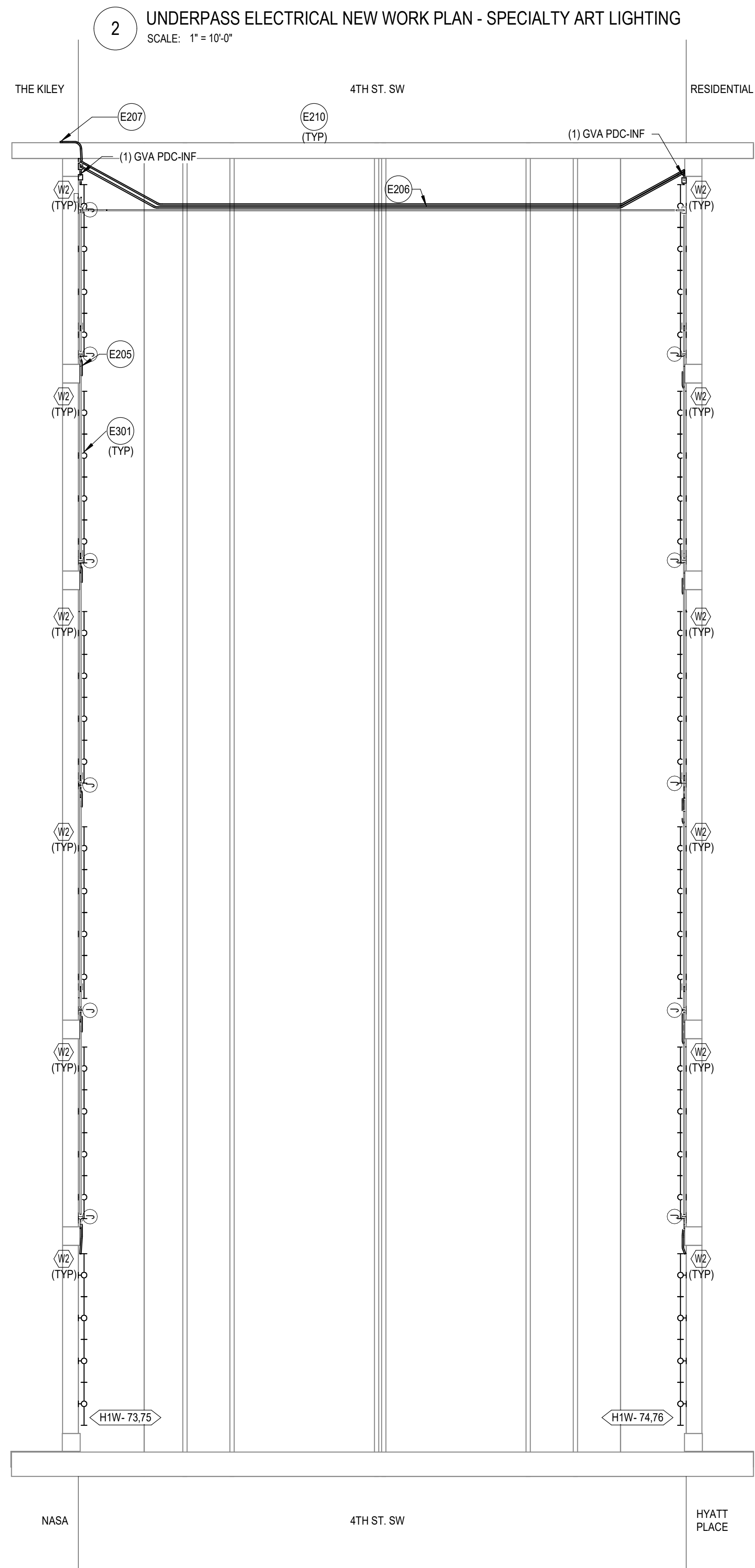
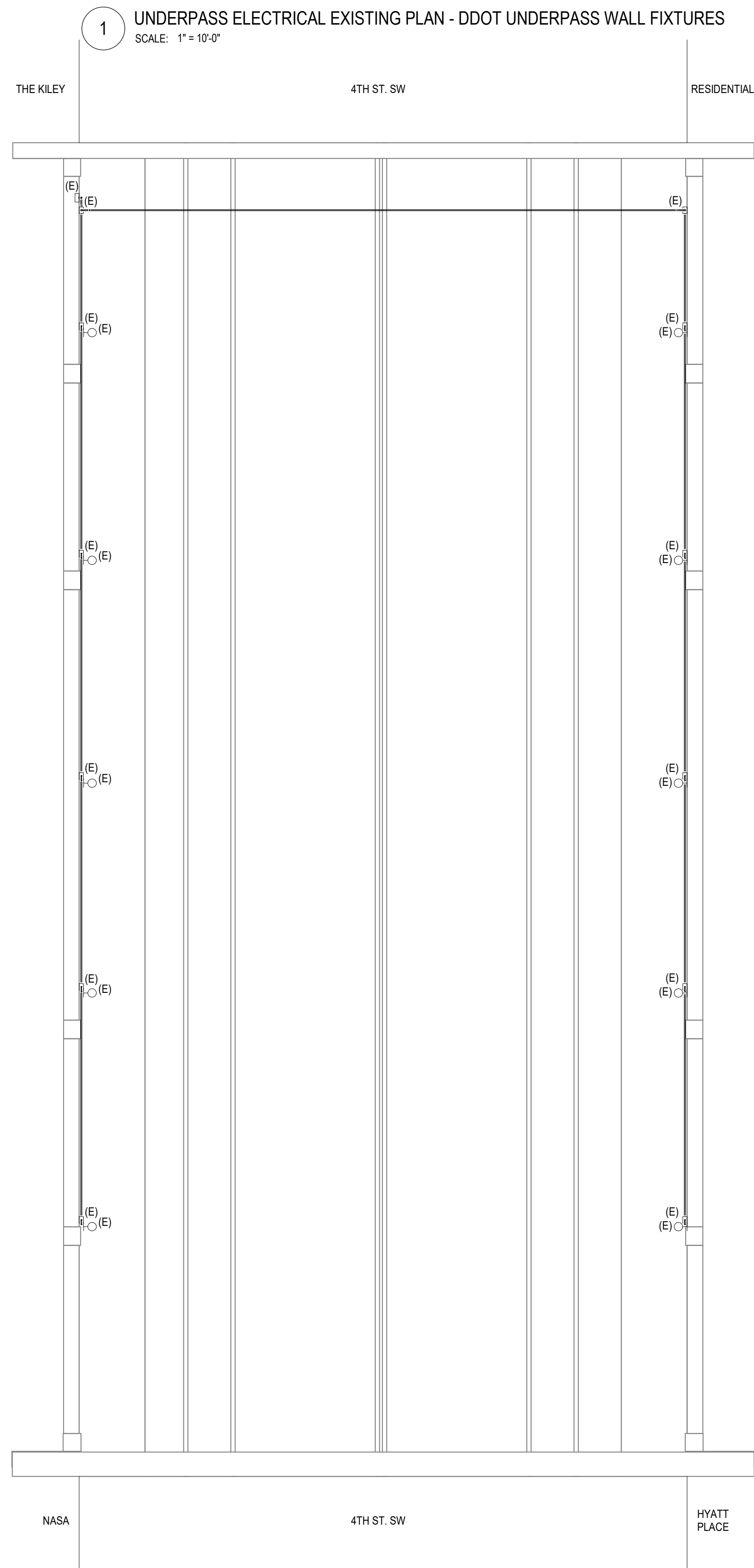


DC COMMISSION ON THE ARTS & HUMANITIES

THANK YOU!



GOVERNMENT OF THE
DISTRICT OF COLUMBIA



GENERAL SHEET NOTES

- A. SEE DRAWING E01 FOR ABBREVIATIONS, SYMBOLS, AND GENERAL NOTES.
- B. QUANTITY AND LOCATION OF DEVICES SHOWN ON PLANS ARE APPROXIMATE. FIELD VERIFY DEVICES AND LOCATIONS.
- C. PROTECT EXISTING TO-REMAIN CEILING, FLOORS, WALLS, EQUIPMENT, AND DEVICES.
- D. SELECT DEMOLITION MAY BE REQUIRED FOR NEW CONSTRUCTION AND MAY NOT BE DEMONATED ON THIS DRAWING. CAREFULLY COORDINATE DEMOLITION WITH NEW CONSTRUCTION TO AVOID ACTUAL EXTENT OF DEMOLITION.
- E. EXAMINE THE DRAWINGS OF OTHER TRADES AND BE FAMILIAR WITH THE DEMOLITION REQUIRED BY OTHER TRADES. PERFORM INCIDENTAL ELECTRICAL DEMOLITION WORK AND/OR RELOCATION ELECTRICAL TO FACILITATE THE DEMOLITION WORK OF OTHER TRADES, WHETHER OR NOT SPECIFICALLY INDICATED.
- F. THOROUGHLY SURVEY THE EXISTING SYSTEMS PRIOR TO SUBMITTING THE BID PRICE. INCLUDE A REMOVAL OF ALL ASSOCIATED COMPONENTS OF SYSTEMS INDICATED TO BE REMOVED. DEMOLISHED ELECTRICAL COMPONENTS SHALL NOT BE ABANDONED IN PLACE.
- G. PROVIDE BLANK COVER PLATES WHERE DEVICES ARE REMOVED BUT EXISTING WALLS REMAIN INTACT.
- H. PROVIDE NEW TYPE DIRECTORIES FOR PANELS AFFECTED BY THIS ALTERATION.
- I. PROVIDE FOR DISPOSAL MATERIALS OFF SITE AND INCLUDE ALL COSTS IN BID. HANDLE ALL MATERIALS IN ACCORDANCE WITH LEED REQUIREMENTS, ALL FEDERAL, STATE, AND LOCAL REGULATIONS.
- J. WHERE EXISTING SERVICES AND/OR EQUIPMENT THAT IS TO REMAIN IN USE ARE REQUIRED TO BE SHUT DOWN, COORDINATE WITH THE OWNER'S REPRESENTATIVE, INCLUDE ALL ASSOCIATED OVERTIME COSTS TO PERFORM THIS WORK DURING WEEKENDS AND EVENINGS. INCLUDE ALL COSTS FOR TEMPORARY POWER WHEN SHUT DOWN MUST OCCUR FOR PERIODS LONGER THAN THESE HOURS. COORDINATE ELECTRICAL SHUT DOWNS WITH THE OWNER ONE WEEK PRIOR TO SHUT DOWN.
- K. REMOVE ELECTRICAL EQUIPMENT INDICATED WITH HEAVY WEIGHT DASHED LINES OR INDICATED WITH KEYNOTES. PROVIDE CODE-COMPLIANT SUPPORT TO EXISTING-TO-REMAIN LINES FOR CONDUITS AND BOXES WHERE CEILING ARE TO BE REMOVED. RE-ROUTE BRANCH CIRCUITS AND RELOCATE JUNCTION BOXES AS REQUIRED TO FACILITATE INSTALLATION OF NEW EQUIPMENT AND SYSTEMS IN CEILING SPACES.
- L. MAINTAIN ELECTRICAL SERVICE TO LIGHTING FIXTURES AND DEVICES THAT ARE TO REMAIN. REMOVE AND WIRE AS REQUIRED WHERE DEMOLITION WORK AFFECTS ELECTRICAL SERVICE TO DOWNSTREAM DEVICES THAT ARE TO REMAIN. LIMIT THE VOLTAGE DROP TO 3% FOR EACH LIGHTING BRANCH CIRCUIT AND 2% FOR ALL FEEDERS.
- M. PROVIDE DEDICATED NEUTRALS FOR EACH DIMMING CIRCUIT.
- N. ALL ELECTRICAL BRANCH CIRCUIT WIRING SHALL BE A MINIMUM SIZE OF #10 AWG. COORDINATE PANEL WIRE SIZE REQUIRED WITH SCHEDULES ON SHEET E01.
- O. CONTRACTOR SHALL BE RESPONSIBLE FOR COORDINATING PROPER WIRE TYPE AND QUANTITY WITH MANUFACTURER.
- P. ALL ELECTRICAL EQUIPMENT TO BE REMOVED OR RELOCATED FROM THE BUILDING AND EXPOSED TO THE ELEMENTS IS TO BE INSTALLED IN A NEMA 3R ENCLOSURE. EQUIPMENT INCLUDES BUT IS NOT LIMITED TO PANELBOARDS, DISCONNECT SWITCHES, VFDs, DRIVERS, AND OTHER LIGHTING CONTROL COMPONENTS.
- S. PROVIDE ADDITIONAL CIRCUITS AS REQUIRED BY THE MANUFACTURERS.
- T. PROVIDE COMPLETE SHOP DRAWINGS FOR REVIEW AND APPROVAL OF ALL CONTROL SYSTEMS.
- U. NO MORE THAN THREE CIRCUITS MAY SHARE A HOMERUN. ALL CIRCUITS INDICATED TO BE REMOVED TO REMAIN EQUIPMENT / SYSTEM. SUBSCRIPT (D) INDICATES DEMOLISHED EQUIPMENT/SYSTEM.

○ SHEET KEYNOTES

- E205 ROUTE "STR9 IN JUMPER CABLE" IN CONDUIT OVER THE DDOT LIGHT FIXTURE CONDUIT. CONDUIT TO TRANSITION TO CABLING WHEN THE CONDUIT MEETS THE BRACKET ARM. PROVIDE STRAP SEAL FOR THE CONDUIT TO TRANSITION TO CABLE TRANSITION. SEE E6 SERIES FOR MORE INFORMATION.
- E206 ROUTE NEW CONDUIT FOR SPECIALTY ART LIGHTING DIRECTLY ADJACENT AND PARALLEL TO DDOT UNDERPASS LIGHTING CONDUIT. ANY NEW PENETRATIONS REQUIRED SHALL MEET DDO STANDARDS AND BE INSTALLED IN ACCORDANCE WITH E6 SERIES.
- E207 REFER TO E6.1 FOR CONTINUATION AND MORE INFORMATION.
- E210 BOLD LINES INDICATE SPECIALTY ART LIGHTING (NON-DDOT OWNED FIXTURES AND SYSTEM) DDOT FIXTURES AND SYSTEM SHOWN WITHIN LINE WEIGHT FOR COORDINATION.
- E211 W2 FIXTURE TO BE SURFACE MOUNTED WITH HORIZONTAL CABLE ARM. FIXTURE SHALL BE MOUNTED TO THE UNDERPASS SPECIALTY ART WALL FROM ABOVE. PROVIDE CONTINUOUS RUN AS SHOWN IN PLAN. ADJACENT FIXTURES SHALL BE INSTALLED END-TO-END WITH NO GAP BETWEEN ADJACENT FIXTURES. PROVIDE CONTINUOUS RUN OF CABLE FROM THE LIGHTING ARMS. ALL CABLING BETWEEN FIXTURES AND FROM POWER SOURCES TO FIXTURES SHALL BE CONCEALED. PROVIDE DMX CONTROL AND HARDWARE. UTILIZE ROUTING WITHIN BRACKET ARM AND PARTS AND HARDWARE TO BE PROVIDED BY ELEMENT (COLOR TO MATCH SUPPORTS) FOR ANY OTHER EXPOSED CABLING. SEE E6 SERIES FOR MORE INFORMATION.

SW DC
BRIDGE/UNDERPASS
LIGHTING PROJECT

4TH AND E ST. SW.
WASHINGTON, D.C. 20024

SMITHGROUP

500 GRISWOLD
SUITE 1700
DETROIT, MI 48226
313.983.3600
smithgroup.com

1700 NEW YORK AVENUE NW
SUITE 100
WASHINGTON, DC 20006
202.842.2100
smithgroup.com

ISSUED FOR	REV	DATE
CFA REVISION	2	2022 1104
DODOT REVISIONS	1	2022 0425
100% CONSTRUCTION DOCUMENTS		2021 0806

SEALS AND SIGNATURES

NOT FOR
CONSTRUCTION

SHEET TITLE

FIRST LEVEL ELECTRICAL PLANS

PROJECT NUMBER

11726

SHEET NUMBER

E2.1

GENERAL SHEET NOTES

- A. CONTRACTOR TO VERIFY DDOT ILLUMINANCE REQUIREMENTS ARE MET IN THE FIELD AND EXCHANGE FIXTURES IF NEEDED TO ACHIEVE THE LIGHTING LEVELS DESIRED.
- B. PROVIDE ADDITIONAL CONDUIT, JUNCTION BOXES AND ANY OTHER COMPONENTS SHOULD FIXTURES NEED TO BE LOWERED TO MEET THE REQUIRED LIGHT LEVELS.
- C. LIGHT LEVELS ARE BASED ON THE EXISTING CONDITIONS AND SUGGESTIONS FROM: CHAPTER 43 OF THE 2019 DDOT DESIGN AND ENGINEERING MANUAL, CHAPTER 4 OF THE 2013 DDOT STREETLIGHTING POLICY AND GUIDELINES, AND IES RP-8-18.

**SW DC
BRIDGE/UNDERPASS
LIGHTING PROJECT**

4TH AND E ST. SW.
WASHINGTON, D.C. 20024

SMITHGROUP

500 GRISWOLD
SUITE 1700
DETROIT, MI 48226
313.983.3600
smithgroup.com

1700 NEW YORK AVENUE NW
SUITE 100
WASHINGTON, DC 20006
202.842.2100
smithgroup.com

ISSUED FOR	REV	DATE
CFA REVISION	1	2022 1104
100% CONSTRUCTION DOCUMENTS		2021 0806

SEALS AND SIGNATURES

NOT FOR
CONSTRUCTION

○ SHEET KEYNOTES

Calculation Summary							
Label	CalcType	Units	Avg	Max	Min	Avg/Min	Max/Min
Underpass Sidewalk	Illuminance	Lux	58.16	103.0	19.6	2.97	5.26

UNDERPASS ELECTRICAL NEW WORK LIGHTING SIDEWALK CALCULATION -
SPECIALTY ART LIGHTING

SCALE: 1 1/2" = 1'-0"

ELECTRICAL LIGHTING CALCULATIONS

SEE DRAWING E-01 FOR ABBREVIATIONS, SYMBOLS, AND GENERAL NOTES.

Q. QUANTITY AND LOCATION OF DEVICES SHOWN ON PLANS ARE APPLIED TO VERIFY DEVICES AND LOCATIONS.

R. PROTECT EXISTING-TO-REMAIN CEILING, FLOORS, WALLS, EQUIPMENT, AND DEVICES.

S. SELECT DEMOLITION MAY BE REQUIRED FOR NEW CONSTRUCTION AND MAY NOT BE DELINEATED ON THIS DRAWING. CAREFULLY COORDINATE DEMOLITION WITH NEW CONSTRUCTION TO VERIFY ACTUAL EXTENT OF DEMOLITION.

T. EXAMINE THE DRAWINGS OF OTHER TRADES AND BE FAMILIAR WITH THE DEMOLITION REQUIRED BY OTHER TRADES. PERFORM INCIDENTAL ELECTRICAL DEMOLITION WORK AND/OR RELOCATION REQUIRED TO FACILITATE THE DEMOLITION WORK OF OTHER TRADES, WHETHER OR NOT SPECIFICALLY INDICATED.

U. THOROUGHLY SURVEY THE EXISTING SYSTEMS PRIOR TO SUBMITTING THE BID PRICE. INCLUDE A REMOVAL OF ALL ASSOCIATED COMPONENTS OF SYSTEMS INDICATED TO BE REMOVED. DISCONNECTED ELECTRICAL COMPONENTS SHALL NOT BE ABANDONED IN PLACE.

V. PROVIDE BLANK COVER PLATES WHERE DEVICES ARE REMOVED BUT EXISTING WALLS REMAIN INTACT.

W. PROVIDE NEW TYPED DIRECTORY FOR PANELS AFFECTED BY THIS ALLOCATION.

X. RELOCATE EXCESS MATERIALS OFF SITE AND INCLUDE ALL COSTS IN BID. HANDLE ALL MATERIALS IN ACCORDANCE WITH LEAD REQUIREMENTS, ALL FEDERAL, STATE, AND LOCAL REGULATIONS.

Y. WHERE EXISTING SERVICES AND/OR EQUIPMENT THAT IS TO REMAIN IN USE REQUIRE TO BE SHUT DOWN, COORDINATE WITH THE OWNER'S REPRESENTATIVE. INCLUDE ALL ASSOCIATED OVERTIME COSTS TO PERFORM THIS WORK DURING WEEKENDS AND EVENINGS. INCLUDE ALL COSTS FOR PROVIDING TEMPORARY POWER WHERE SHUT DOWN WORK REQUIRES PERIOD LONGER THAN THESE HOURS.

Z. COORDINATE ELECTRICAL SHUT DOWNS WITH THE OWNER ONE WEEK PRIOR TO SHUT DOWN.

AA. REMOVE ELECTRICAL EQUIPMENT INDICATED WITH HEAVY WEIGHT DASHED LINES OR INDICATED WITH KEYNOTES. PROVIDE CODE-PLANT SUPPORT TO EXISTING-TO-REMAIN ELECTRICAL CONDUITS AND BOXES WHERE CEILING ARE TO BE REMOVED. RE-ROUTE BRANCH CIRCUITS AND RELOCATE JUNCTION BOXES AS REQUIRED TO FACILITATE INSTALLATION OF NEW EQUIPMENT AND SYSTEMS IN CEILING SPACES.

AB. MAINTAIN ELECTRICAL SERVICE TO LIGHTING FIXTURES AND EQUIPMENT THAT ARE TO REMAIN. WHERE CEILING ARE REQUIRED WHERE DEMOLITION WORK AFFECTS ELECTRICAL SERVICE TO DOWNSTREAM DEVICES THAT ARE TO REMAIN.

AC. LIMIT THE VOLTAGE DROP TO 3% FOR ALL LIGHTING BRANCH CIRCUITS AND 2% FOR ALL FEEDERS.

AD. PROVIDE DEDICATED NEUTRALS FOR EACH DIMMING CIRCUIT.

AE. ALL LIGHTING BRANCH CIRCUITS SHALL BE A MINIMUM SIZE OF #10 AWG. COORDINATE FINAL WIRE SIZE REQUIREMENT WITH SCHEDULES ON SHEET E-01.

AF. CONTRACTOR SHALL BE RESPONSIBLE FOR COORDINATING POWER WIRE TYPE AND QUANTITY WITH MANUFACTURER.

AG. ALL ELECTRICAL EQUIPMENT SHALL BE INSTALLED OUTSIDE OF THE BUILDING AND EXPOSED TO THE ELEMENTS IS TO BE INSTALLED IN A NEMA 3R ENCLOSURE. EQUIPMENT INCLUDES BUT IS NOT LIMITED TO PANELBOARDS, DISCONNECT SWITCHES, VFDs, DRIVERS, AND OTHER LIGHTING CONTROL COMPONENTS.

AH. PROVIDE ADDITIONAL CIRCUITS AS REQUIRED BY THE MANUFACTURERS.

AI. PROVIDE COMPLETE SHOP DRAWINGS FOR REVIEW AND APPROVAL OF ALL CONTROL SYSTEMS.

AJ. NO MORE THAN THREE CIRCUITS MAY SHARE A HOMERUN.

AK. ALL INDICATED SYSTEMS SHALL BE IN SAME EQUIPMENT / SYSTEM. SUBSCRIPT (D) INDICATES DEMOLISHED EQUIPMENT / SYSTEM.

4TH AND E ST. SW.
WASHINGTON, D.C. 20024

500 GRISWOLD
SUITE 1700
DETROIT, MI 48226
313.983.3600
smithgroup.com

ISSUED FOR	REV	DATE
CFA REVISION	2	2022 1104
DDOT REVISIONS	1	2022 0425
100% CONSTRUCTION DOCUMENTS		2021 0806

SEALS AND SIGNATURES

NOT FOR
CONSTRUCTION

E609	CONDUITS RUN ACROSS ROADWAY TIGHT TO UNDERPASS.
E610	BOLD LINES INDICATE SPECIALTY ART LIGHTING(NON-DDOT FIXTURES AND SYSTEM). DDOT FIXTURES AND SYSTEM SHOWN WITH THIN LINE WEIGHT FOR COORDINATION.
E611	CONTRACTOR TO COORDINATE SPECIALTY ART LIGHTING MOUNTING BRACKET LOCATIONS WITH EXISTING TO REMAIN DDOT EQUIPMENT. REFER TO DETAIL 2 ON SHEET E6.2 FOR MORE INFORMATION.

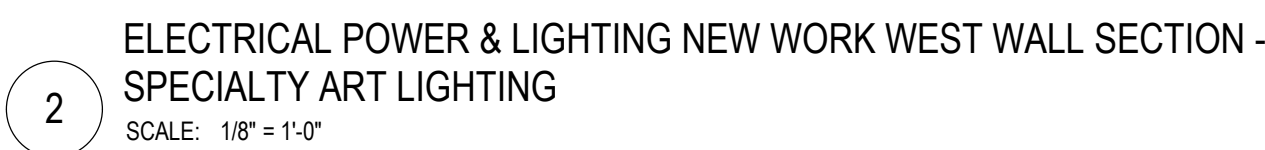
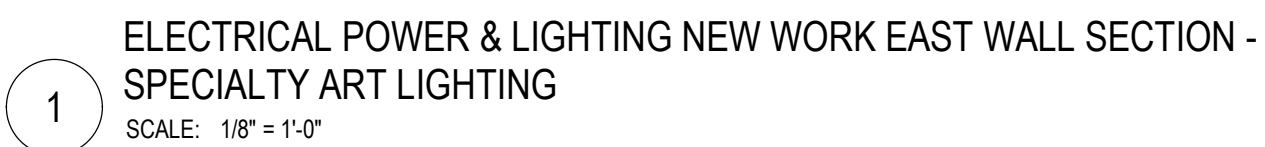
E609	CONDUITS RUN ACROSS ROADWAY TIGHT TO UNDERPASS.
E610	BOLD LINES INDICATE SPECIALTY ART LIGHTING(NON-DDOT FIXTURES AND SYSTEM). DDOT FIXTURES AND SYSTEM SHOWN WITH THIN LINE WEIGHT FOR COORDINATION.
E611	CONTRACTOR TO COORDINATE SPECIALTY ART LIGHTING MOUNTING BRACKET LOCATIONS WITH EXISTING TO REMAIN DDOT EQUIPMENT. REFER TO DETAIL 2 ON SHEET E6.2 FOR MORE INFORMATION.

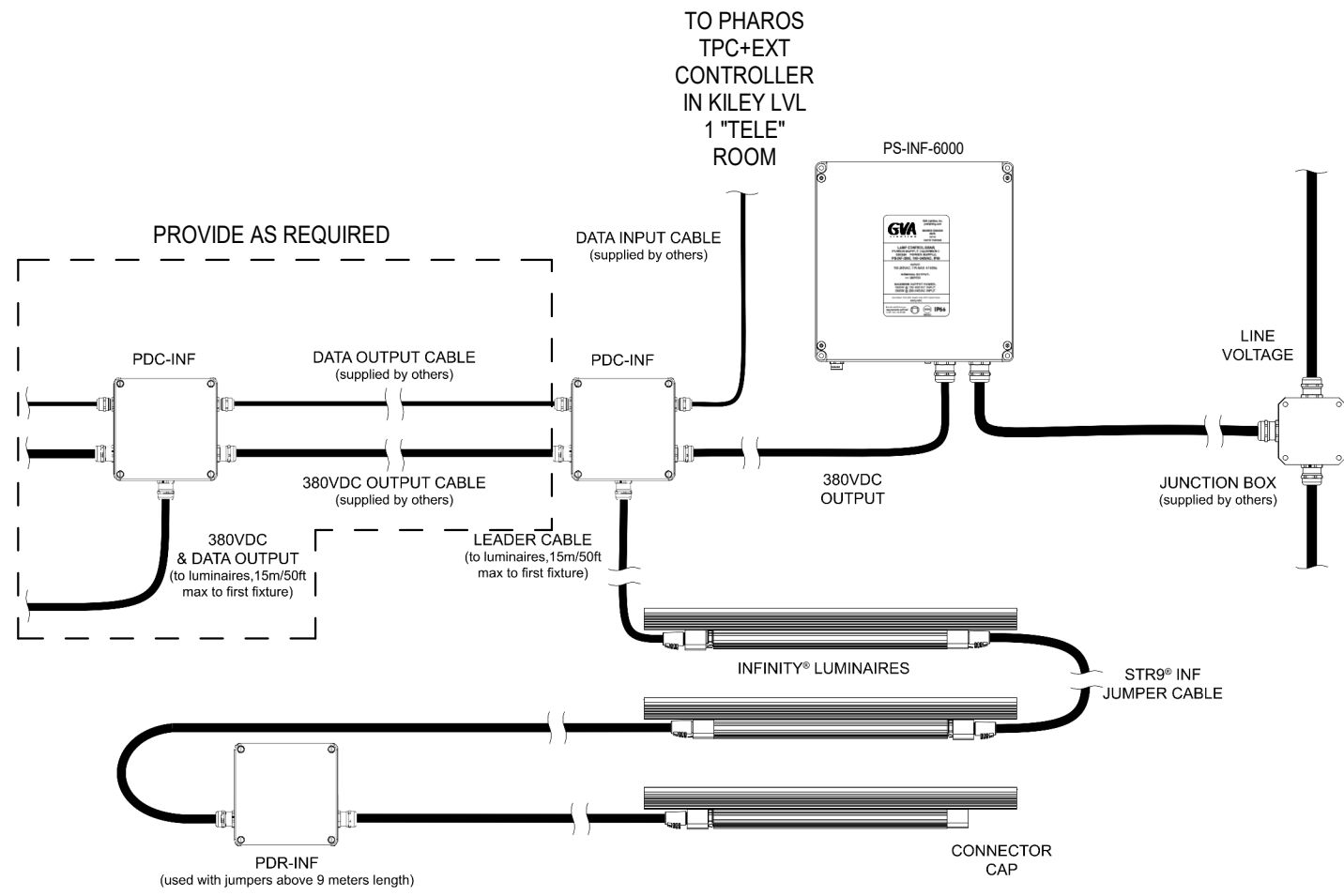
SHEET TITLE

11726

SHEET NUMBER

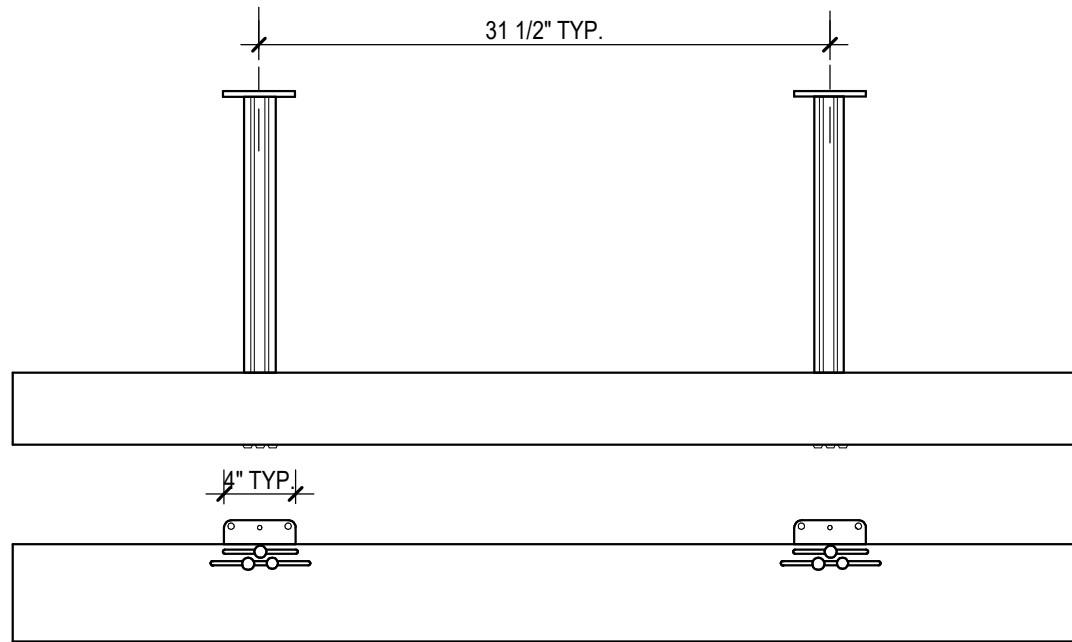
SHEET NUMBER



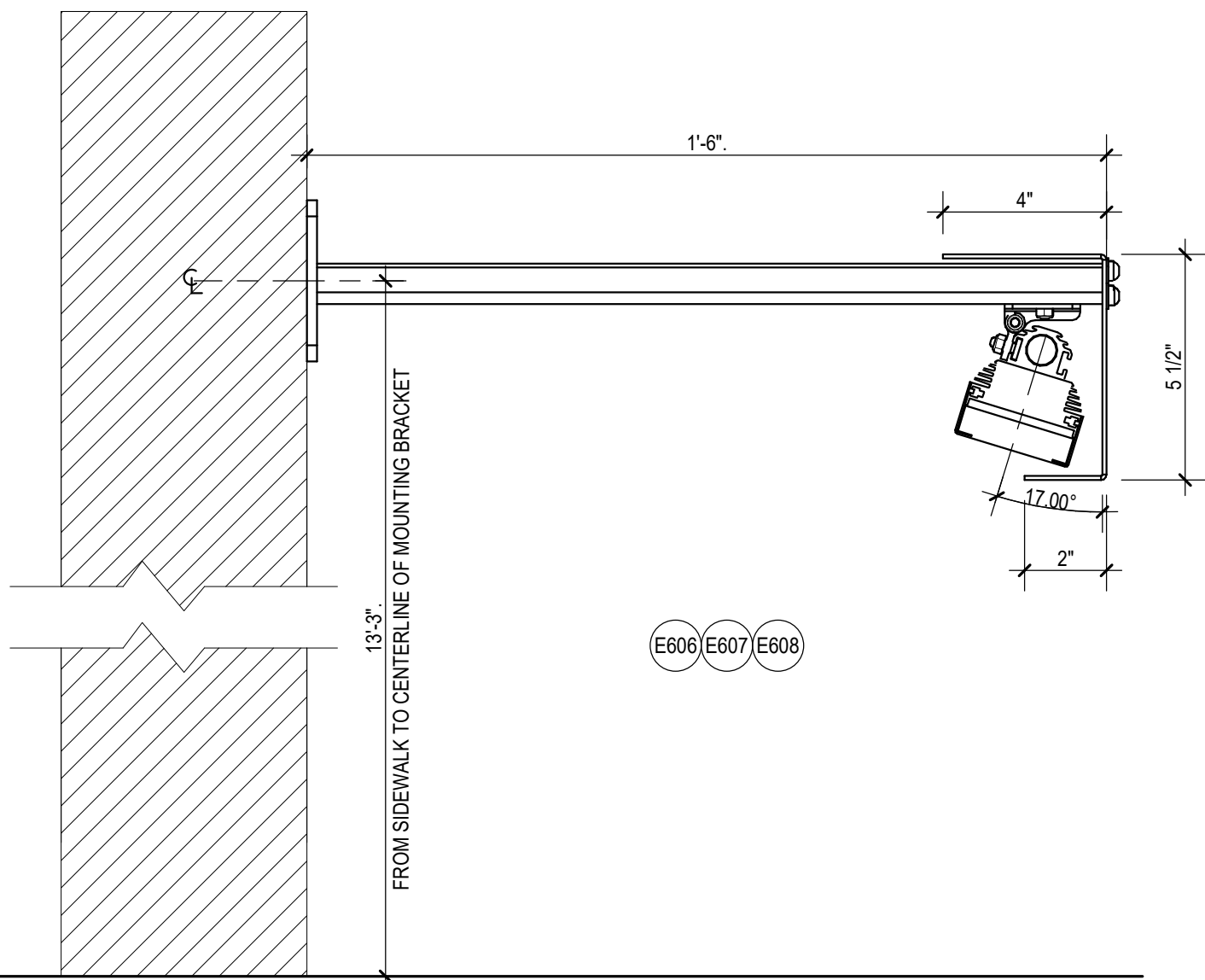


- NOTES:
- COORDINATE DMX PROGRAMMING WITH SWBD TO ESTABLISH SCHEDULES AND SCENES. FINAL LIGHTING SEQUENCES AND SCENES TO BE REVIEWED AND APPROVED BY OWNER.
 - CONTRACTOR TO SEND SHOP DRAWINGS FOR REVIEW REGARDING THE DMX CONTROL SYSTEM.
 - CONTRACTOR TO PROVIDE ALTERNATE PRICING WHERE THE TPC+EXT IS CONNECTED TO THE PHAROS CLOUD, ALLOWING REMOTE CONTROL OF THE CONTROLLER. THE BASIS OF DESIGN ABOVE IS LOCAL CONTROL IN THE KILEY LVL 1 "TELE" ROOM.
 - CONTRACTOR TO SUPPLY ALL COMPONENTS NOTED "SUPPLIED BY OTHERS" ABOVE.
 - TERMINAL BLOCKS INSIDE PDC-INF ACCEPT 12AWG MAX.

1 TYPICAL LIGHTING CONTROL DIAGRAM
SCALE: NOT TO SCALE



PLAN AND ELEVATION VIEW
SCALE: 1"=1'-0"

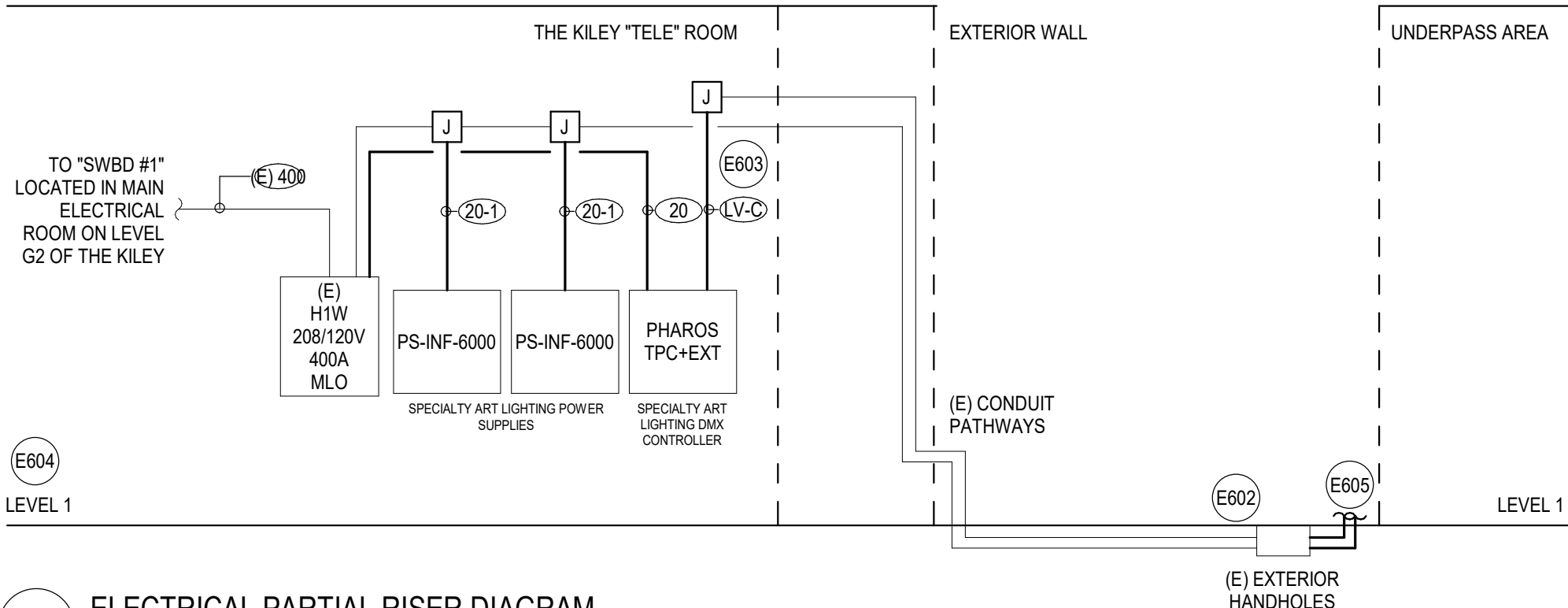


2 LIGHT FIXTURE MOUNTING DETAIL
SCALE: 3" = 1'-0"

Panelboard: (E)H1W														
Location: (E) THE KILEY - LVL 1 "TELE" ROOM						Volts: 208Y/120				A.I.C. Rating: 65,000				
Supply From: (E) THE KILEY - "HOUSE SWBD #1"						Phases: 3				Mains Type: MLO				
Mounting: Surface						Wires: 4				Bus Rating: 400 A				
Enclosure: Type 1														
CKT	Circuit Description	Trip	Poles	A (VA)		B (VA)		C (VA)		Poles	Trip	Circuit Description	CKT	
1	(E) STAIR A EWH-1	20 A	2	2000	2500							(E) LOADING EUH-4	2	
3						2000	2500				3	35 A		
5	(E) TRASH RM EUH-2	30 A	2	2500	2000			2500	0				6	
7											2	25 A		
9	(E) LEASING FCU-4	15 A	2			890	2000					(E) LOADING EWH-1	10	
11								890	1000	1	20 A	(E) LOBBY BB HEATER	12	
13	(E) LEASING RECS	20 A	1	900	1000					1	20 A	(E) LOBBY BB HEATER	14	
15	(E) LEASING RECS	20 A	1			1080	1000			1	20 A	(E) LOBBY BB HEATER	16	
17	(E) LOBBY BB HEATER	20 A	1					1000	1000	1	20 A	(E) LOBBY BB HEATER	18	
19	(E) LOBBY BB HEATER	20 A	1	1000	360					1	20 A	(E) LEASING BATH RECS	20	
21	(E) LOBBY RECS	20 A	1			900	1080			1	20 A	(E) LOBBY RECS	22	
23	(E) LOBBY REF	20 A	1					1200	1200	1	20 A	(E) LOBBY COFFEE MACH	24	
25	(E) LVL 2 TELCOM RECS	20 A	1	360	720					1	20 A	(E) LOBBY DESK REC	26	
27	(E) LVL 2 TELCOM RECS	20 A	1			360	1080			1	20 A	(E) LVL 1 RECS	28	
29	(E) LOBBY DESK RECS	20 A	1					360	360	1	20 A	(E) LOBBY DESK REC	30	
31	(E) LVL 1 RECS	20 A	1	1080	2000								32	
33	(E) AMENITY OFFICE REC	20 A	1			720	2000				3	25 A	(E) LOADING DOCK DOOR	34
35	(E) COPY MACHINE	20 A	1					1200	2000				36	
37				2800	1200					1	20 A	(E) PANTRY REF	38	
39	(E) LVL 1 COMPACTOR	25 A	3			2800	1000			1	20 A	(E) PANTRY DISPOSER	40	
41								2800	1200	1	20 A	(E) PANTRY DISHWASHER	42	
43	(E) PANTRY SMALL APP	20 A	1	1500	360					1	20 A	(E) LVL 1 TELCOM RECS	44	
45	(E) PANTRY SMALL APP	20 A	1			1500	360			1	20 A	(E) LVL 1 TELCOM RECS	46	
47	(E) LVL 1 CORRIDOR RECS	20 A	1					720	720	1	20 A	(E) LVL 2 CORRIDOR RECS	48	
49	(E) PANTRY MICROWAVE	20 A	1	1200	1000								50	
51						1000	1000			2	20 A	(E) LEASING EWH-2	52	
53	(E) LOADING EWH-2	20 A	2					1000	800	1	20 A	(E) LVL 2 LIGHTS	54	
55	SPARE	20 A	1	0	800					1	20 A	(E) LVL 1 LIGHTS	56	
57	SPARE	20 A	1			0	1200			1	20 A	(E) LOADING DOCK LTG	58	
59	SPARE	20 A	1					0	800	1	20 A	(E) LEASING OFFICE LTG	60	
61	(E) LEASING OFFICE LTG	20 A	1	900	1200					1	20 A	(E) LEASING OFFICE LTG	62	
63	(E) LEASING OFFICE LTG	20 A	1			600	0			1	20 A	SPARE	64	
65	(E) LOADING DOCK FAN	20 A	1					400	0	1	20 A	SPARE	66	
67				3330	6300							(E) LOADING DOCK DH-1	68	
69	(E) LOADING UH-7	35 A	3			3330	6300			3	70 A		70	
71								3330	6300				72	
73	4TH ST. UNDERPASS LTG - KILEY (WEST WALL)	20 A	2	888	888					2	20 A	4TH ST. UNDERPASS LTG - HYATT (EAST WALL)	74	
75						888	888						76	
77	4TH ST. UNDERPASS LTG CONTROL	20 A	1					180	0	1	20 A	SPARE	78	
79				2990	9300								80	
81	(E) DIMMING PANEL DP1	60 A	3			2990	9300			3	100 A	(E) PANEL H4W	82	
83								2990	9300				84	
Total Load:				51076 VA		48766 VA		43250 VA						
Total Amps:				433 A		413 A		360 A						
Load Classification		Connected Load		Demand Factor		Estimated Demand		Panel Totals						
Equipment		1200 VA		100.00%		1200 VA								
Lighting		19002 VA		100.00%		19002 VA		Total Conn. Load: 143092 VA						
Receptacle		39420 VA		62.68%		24710 VA		Total Est. Demand: 113688 VA						
Mechanical Equipment		73470 VA		80.00%		58776 VA		Total Conn.: 397 A						
Appliance		10000 VA		100.00%		10000 VA		Total Est. Demand: 316 A						
Notes:														
1. ALL NEW WORK/SCOPE ARE SHOWN WITH BOLD TEXT. ALL OTHER LOADS ARE EXISTING TO REMAIN AND ARE BASED OFF OF BOTH EXISTING DRAWINGS AND A SITE SURVEY.														
2. CONTRACTOR TO ENSURE SPARES NOTED AND UTILIZED ARE SPARE AND CARRY NO LOAD PRIOR TO ANY INSTALLATION. UTILIZE NEAREST EXISTING SPARE BREAKERS IF REQUIRED AND RE-WORK ANY EXISTING CIRCUIT GROUPINGS IN ORDER TO INSTALL NEW BREAKERS AS DISCOVERED WITH IN-FIELD CONDITIONS. PROVIDE ADDITIONAL/REVISED BREAKERS PER MANUFACTURER REQUIREMENTS AND SHOP DRAWINGS.														

LIGHTING CONTROL SCHEDULE							
LUMINAIRE TYPE	CONTROL	AUTOMATIC DAYLIGHT RESPONSIVE CONTROL	MANUAL ON OUTPUT	BILEVEL/ DIMMING	SCHEDULED SHUTOFF	UNOCCUPIED OUTPUT	TIME DELAY (MINUTES)
SPECIALTY LIGHTING	DMX	N.A.	N.A.	DMX DIMMING	BY OWNER	N.A.	N.A.

- NOTES:
- COORDINATE DMX PROGRAMMING WITH SWBD TO ESTABLISH SCHEDULES AND SCENES. FINAL LIGHTING SEQUENCES AND SCENES TO BE REVIEWED AND APPROVED BY OWNER.



3 ELECTRICAL PARTIAL RISER DIAGRAM
SCALE: NOT TO SCALE

GENERAL SHEET NOTES

- COORDINATE WITH ELECTRICAL AND LIGHTING DRAWINGS TO DETERMINE THE NUMBER OF ALL CONTROLS, MODULES, AND DEVICES. DO NOT PROVIDE QUANTITIES BASED SOLELY ON DIAGRAMS.
- PROVIDE NUMBER OF PROCESSORS REQUIRED BASED ON NUMBER OF DEVICES WITHIN SYSTEM AS REQUIRED. PROVIDE FEWEST NUMBER OF PROCESSORS AS POSSIBLE TO PROVIDE A COMPLETE CONTROL SYSTEM THAT FUNCTIONS AS DESIGNED.
- LOCATE PROCESSORS ON OPEN WALL IN TELECOM ROOM AS CLOSE TO CONTROL PANELS AS POSSIBLE.
- PROVIDE CONTROL OF ALL SPECIALTY LIGHTING WITH ALL REQUIRED ACCESSORIES AND SOFTWARE FOR REMOTE CONTROLLABILITY/MANAGEMENT AND MONITORING OF ALL LIGHTING. ALL CONTROL PANELS WITHIN PROJECT TO TIE INTO CENTRAL SYSTEM SOFTWARE. SOFTWARE TO BE INSTALLED ON DEVELOPER'S COMPUTERS. QUANTITY AND LOCATION OF SOFTWARE INSTALL AS REQUIRED OR DIRECTED BY DEVELOPER.
- FINAL LOCATION OF LIGHTING CONTROLS SYSTEM TO BE DETERMINED BY DEVELOPER.
- PROVIDE ADDITIONAL CIRCUITS AS REQUIRED PER MANUFACTURER.
- PROVIDE COMPLETE SHOP DRAWINGS FOR REVIEW AND APPROVAL OF ALL CONTROL SYSTEMS.
- FINAL LIGHTING SEQUENCES AND SCENES TO BE REVIEWED AND APPROVED BY OWNER.

SW DC BRIDGE/UNDERPASS LIGHTING PROJECT

4TH AND E ST. SW.
WASHINGTON, D.C. 20024

SMITHGROUP

500 GRISWOLD
SUITE 1700
DETROIT, MI 48226
313.983.3600
smithgroup.com

1700 NEW YORK AVENUE NW
SUITE 100
WASHINGTON, DC 20006
202.842.2100
smithgroup.com

SHEET KEYNOTES

- E602 (2) EXISTING HANDHOLES LOCATED ADJACENT TO UNDERPASS WITHIN KILEY'S PROPERTY BOUNDARY. CONTRACTOR TO UTILIZE EXISTING CONDUITS FROM BUILDING TO HANDHOLES. PROVIDE NEW CONDUITS FROM HANDHOLES TO NEW SPECIALTY ART LIGHTING AS INDICATED ON DRAWINGS. POWER WIRING TO BE SEPARATE FROM DATA / CONTROL WIRING AT ALL TIMES.
- E603 DATA INPUT CABLES TO BE JOINED INTO THE (1) EXISTING 1.5" CONDUITS. CONTRACTOR TO PROVIDE DATA CABLING FROM CONTROLLER TO PDC-INF LOCATIONS. CONTRACTOR TO COORDINATE FINAL TERMINATION SIZING, WIRING TYPES AND RECOMMENDATIONS. NEW LIGHTING CONTROL DEVICES AND POWER SUPPLIES TO BE MOUNTED ON OPPOSITE WALL FROM (E)H1W. PROVIDE 4'-0" CLEARANCE IN FRONT OF NEW COMPONENTS. APPROXIMATE DISTANCE IS 30'-0".
- E604 EXISTING PANELBOARD AND FEEDER SHOWN FOR REFERENCE ONLY. NEW SCOPE DOES NOT ALTER ELECTRICAL DISTRIBUTION EQUIPMENT AND ONLY AFFECTS CIRCUITS AS INDICATED WITHIN PANELBOARD SCHEDULE.
- E605 NEW CONDUIT TO EXTEND FROM EXISTING HANDHOLE TO SPECIALTY ART LIGHTING IN UNDERPASS. SEE E2.1 AND E6.1 FOR CONTINUATION AND MORE INFORMATION.
- E606 FINAL AIMING TO BE PERFORMED AND REVIEWED WITH LIGHTING DESIGNER ON SITE.
- E607 FINAL DIMENSIONS OF GLARE SHIELD TO BE DETERMINED VIA LIGHT FIXTURE SAMPLE REVIEW AND MOCKUP. PROVIDE SHOP DRAWINGS OF CUSTOM CONTINUOUS GLARE SHIELD ATTACHED TO MOUNTING ARMS FOR REVIEW AND APPROVAL. GLARE SHIELD TO BE MINIMUM 11-GAUGE (1/8") BRAKE-FORMED ALUMINUM. GREY POWDER COATED TO MATCH FIXTURE. WITH COUNTERSUNK FASTENERS AND BUTT SEAMS BETWEEN SECTIONS. BACKED WITH SPLICE SHEET AT SEAM LOCATION.
- E608 CONTRACTOR TO CONFIRM MOUNTING HEIGHT WITH ARCHITECT PRIOR TO INSTALLATION AFTER IN-FIELD VERIFICATION OF ABOVE FINISHED GROUND TO CENTER OF BRACKET DIMENSION.

FEEDER SCHEDULE

(E) 400 4#500KCMIL + 1#3 G, 4" C
20 2#12 + 1#12 G, 3/4" C
20-1 3#10 + 1#10 G, (1) 1 1/2" C
LV-C (1) 1 1/2" C

ELECTRICAL DETAILS

PROJECT NUMBER 11726

SHEET NUMBER

E6.2