

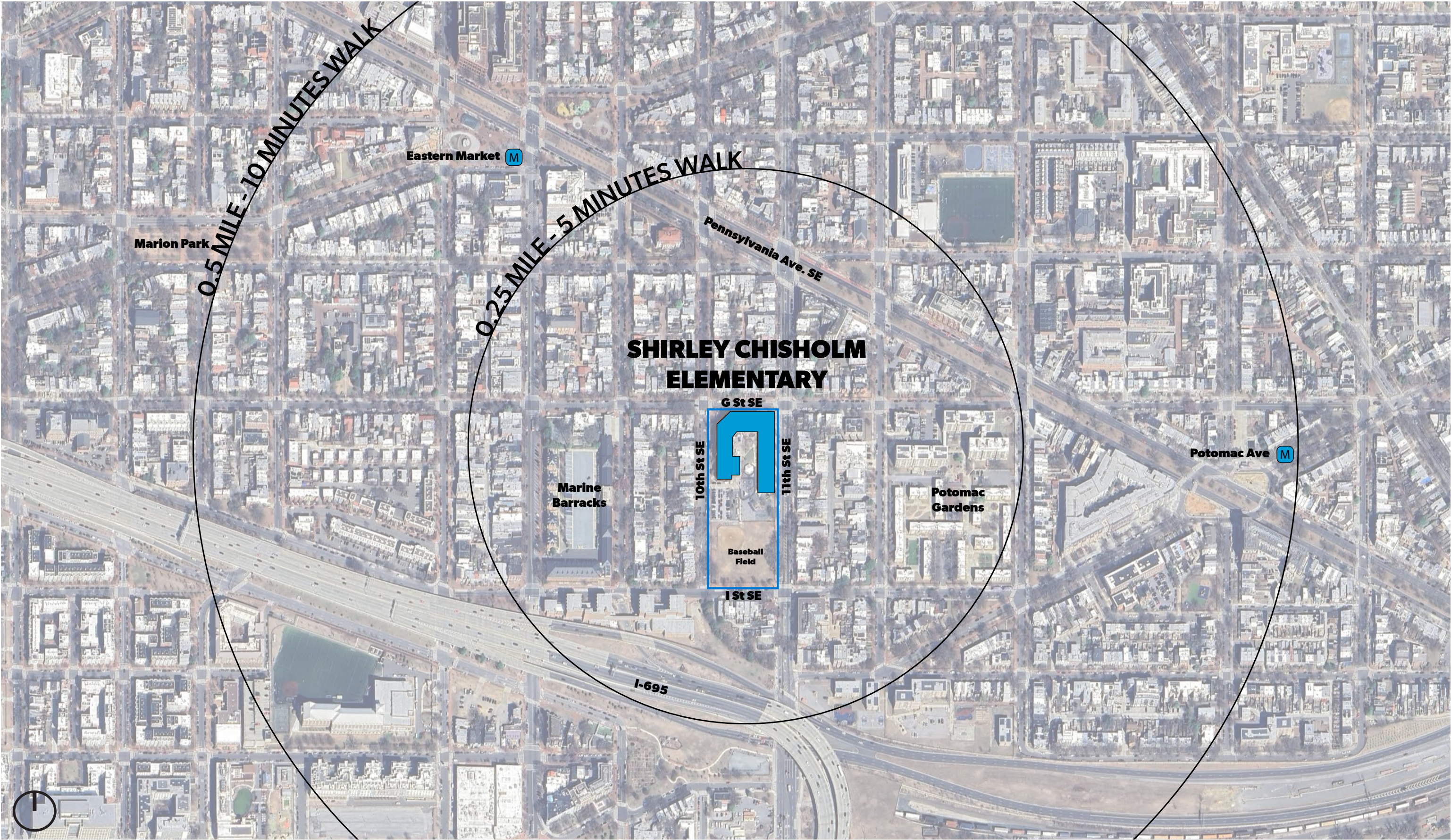
US COMMISSION OF FINE ARTS | HISTORIC PRESERVATION REVIEW BOARD

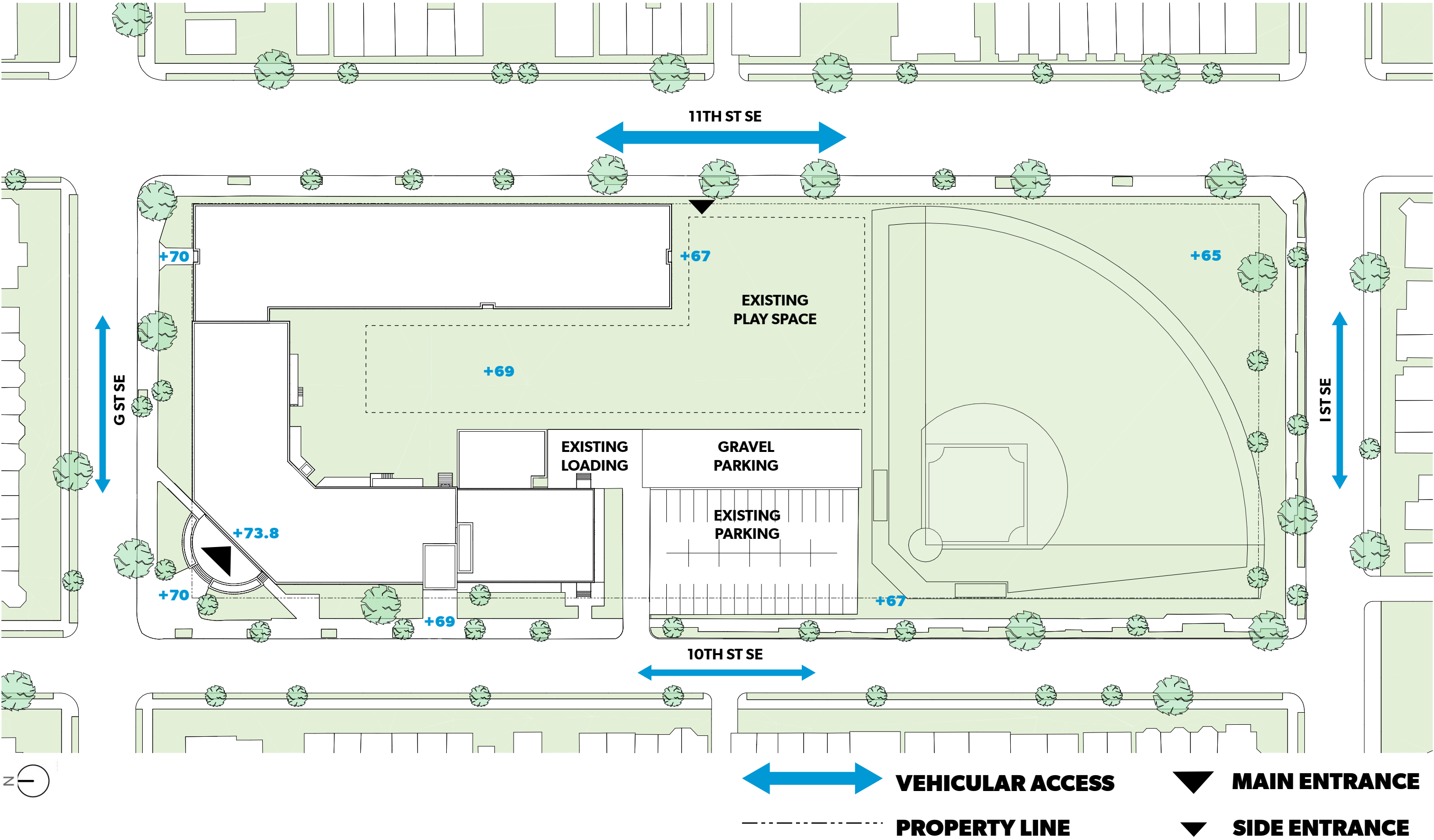
**DGS/DCPS CHISHOLM ELEMENTARY
SCHOOL MODERNIZATION**

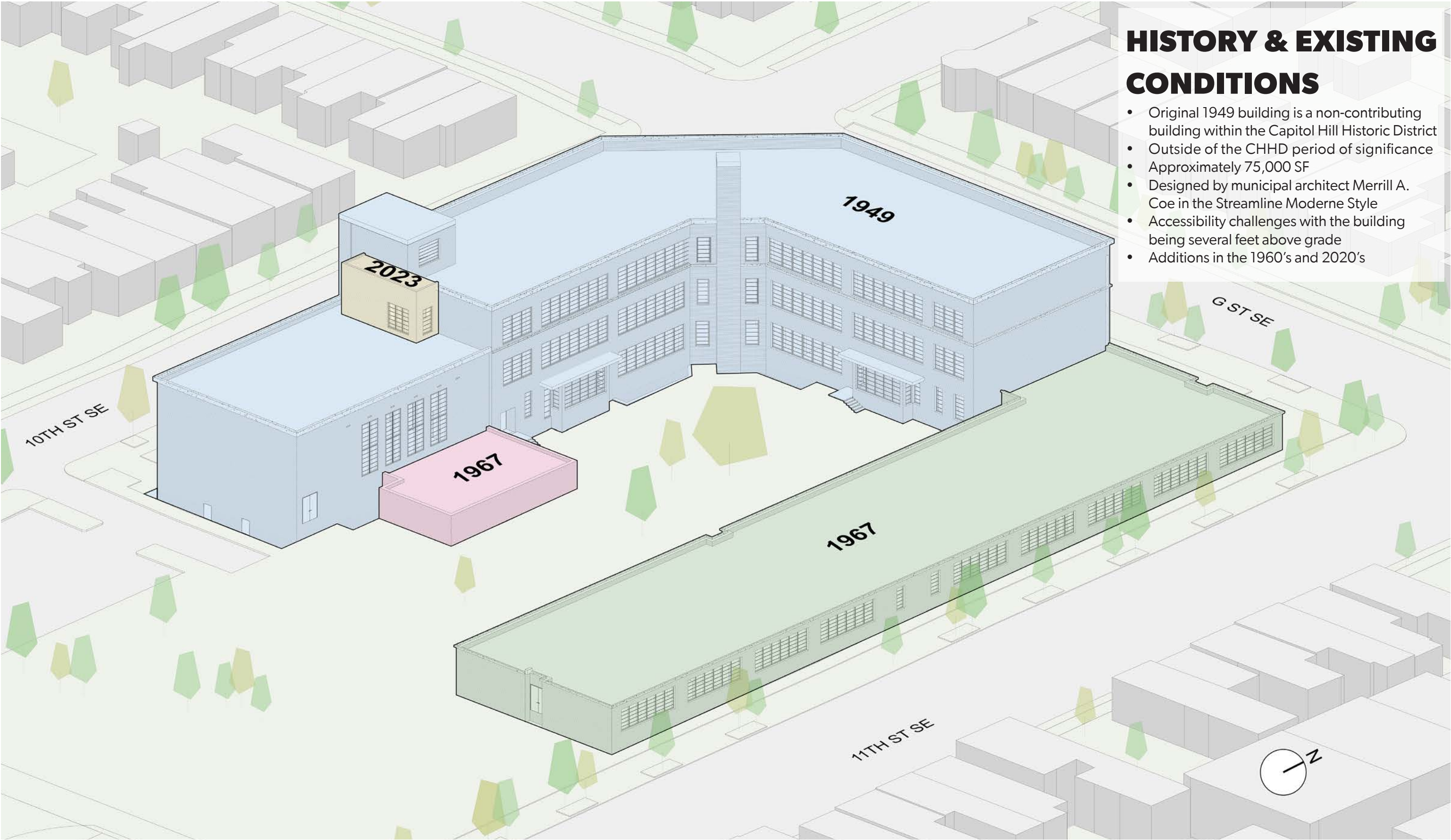
05-FEBRUARY-2026

CFA/HPRB CONCEPT SUBMISSION



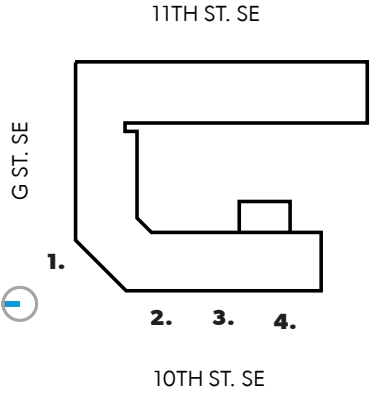


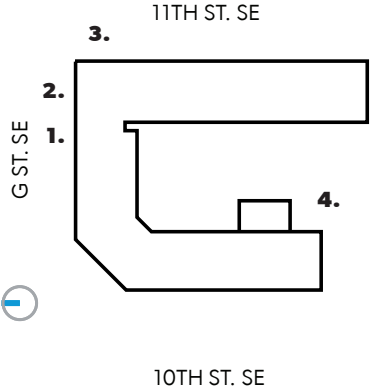


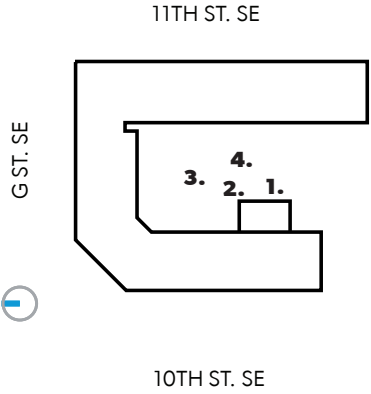


HISTORY & EXISTING CONDITIONS

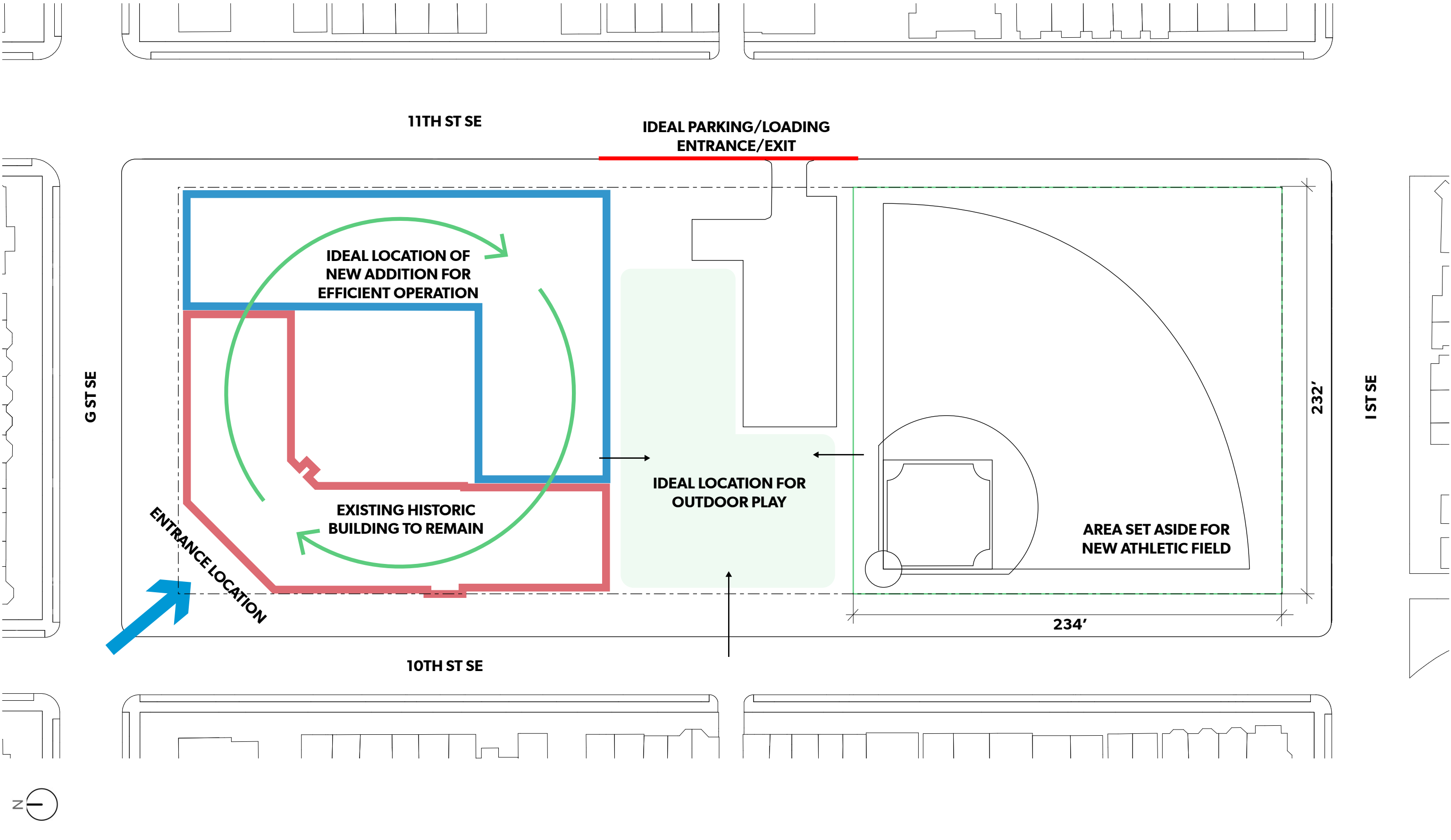
- Original 1949 building is a non-contributing building within the Capitol Hill Historic District
- Outside of the CHHD period of significance
- Approximately 75,000 SF
- Designed by municipal architect Merrill A. Coe in the Streamline Moderne Style
- Accessibility challenges with the building being several feet above grade
- Additions in the 1960's and 2020's



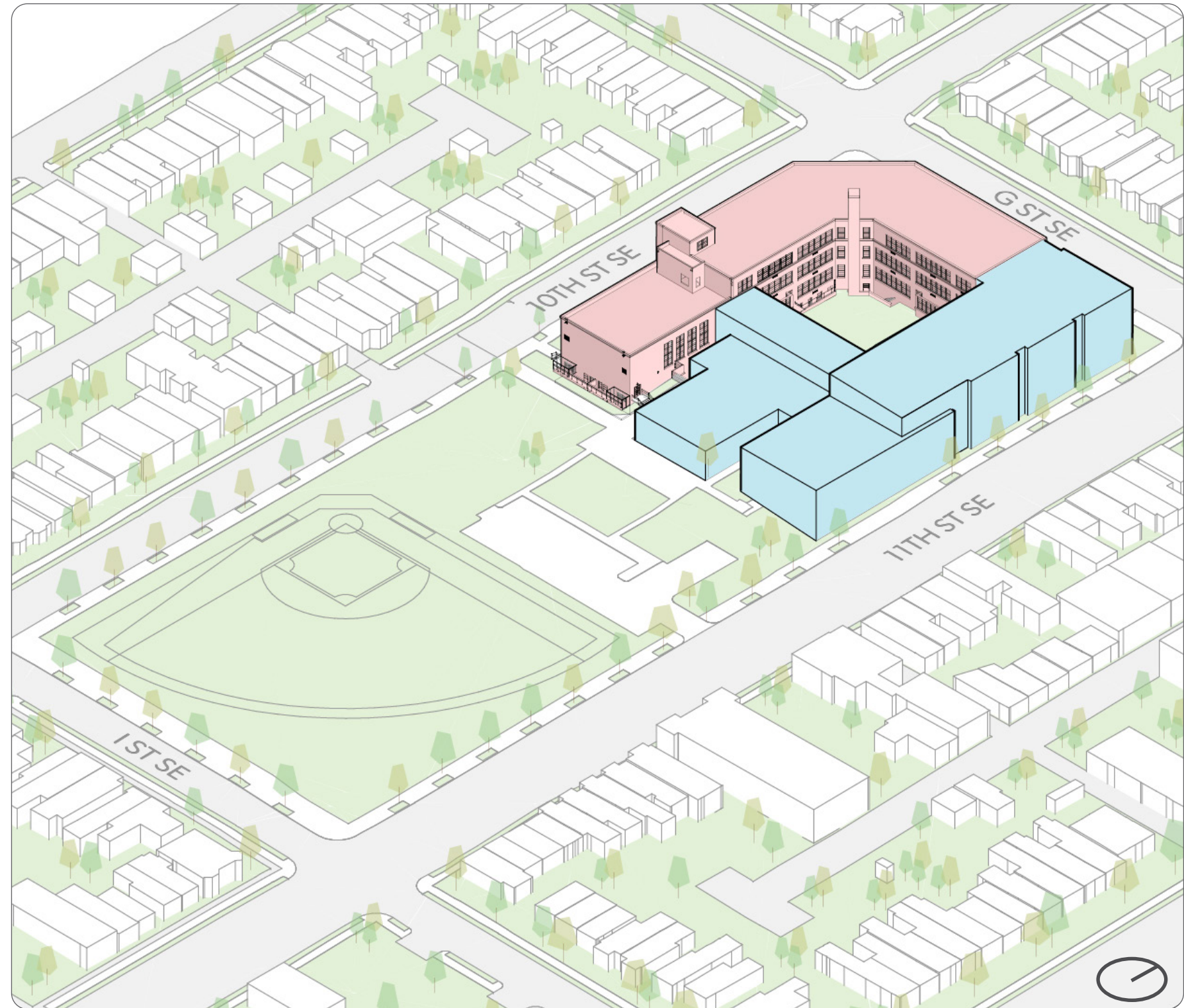




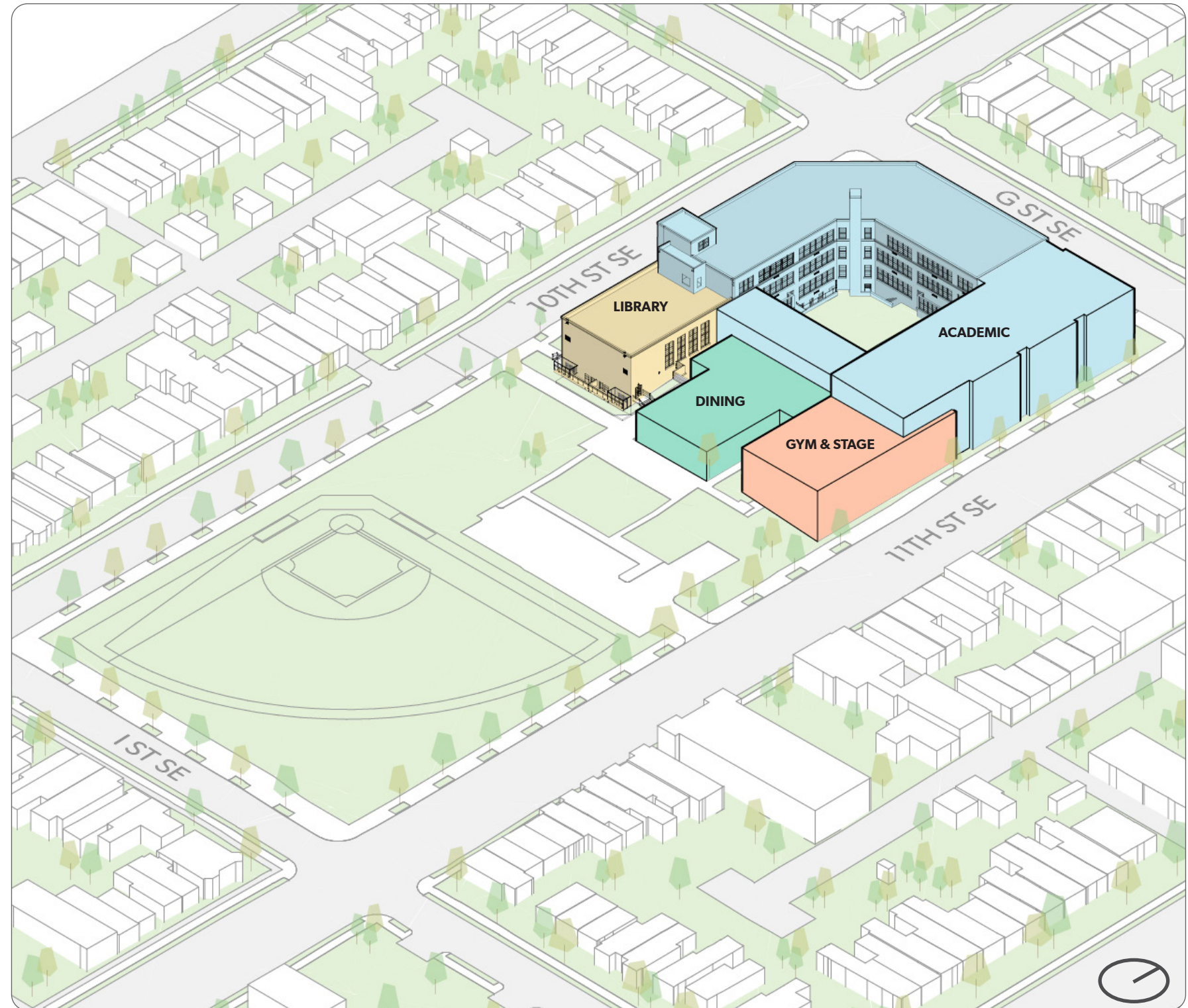
- 1. MODERNIZE AND ENLARGE SCHOOL TO MEET ADDITIONAL PROGRAM REQUIREMENTS**
- 2. MAXIMIZE EXTERIOR PROGRAMMABLE SPACE**
- 3. ENSURE SAFETY AND SECURITY OF STUDENTS AND STAFF**
- 4. CONSIDER DAY-TO-DAY CIRCULATION OF STUDENTS, STAFF, AND PUBLIC**
- 5. MEET DISTRICT SUSTAINABILITY REQUIREMENTS**



- Addition massing along 11th street mirrors historic massing along 10th street
- Lower volume encloses courtyard to the south



- Major program located at ground floor and adjacent to outdoor spaces

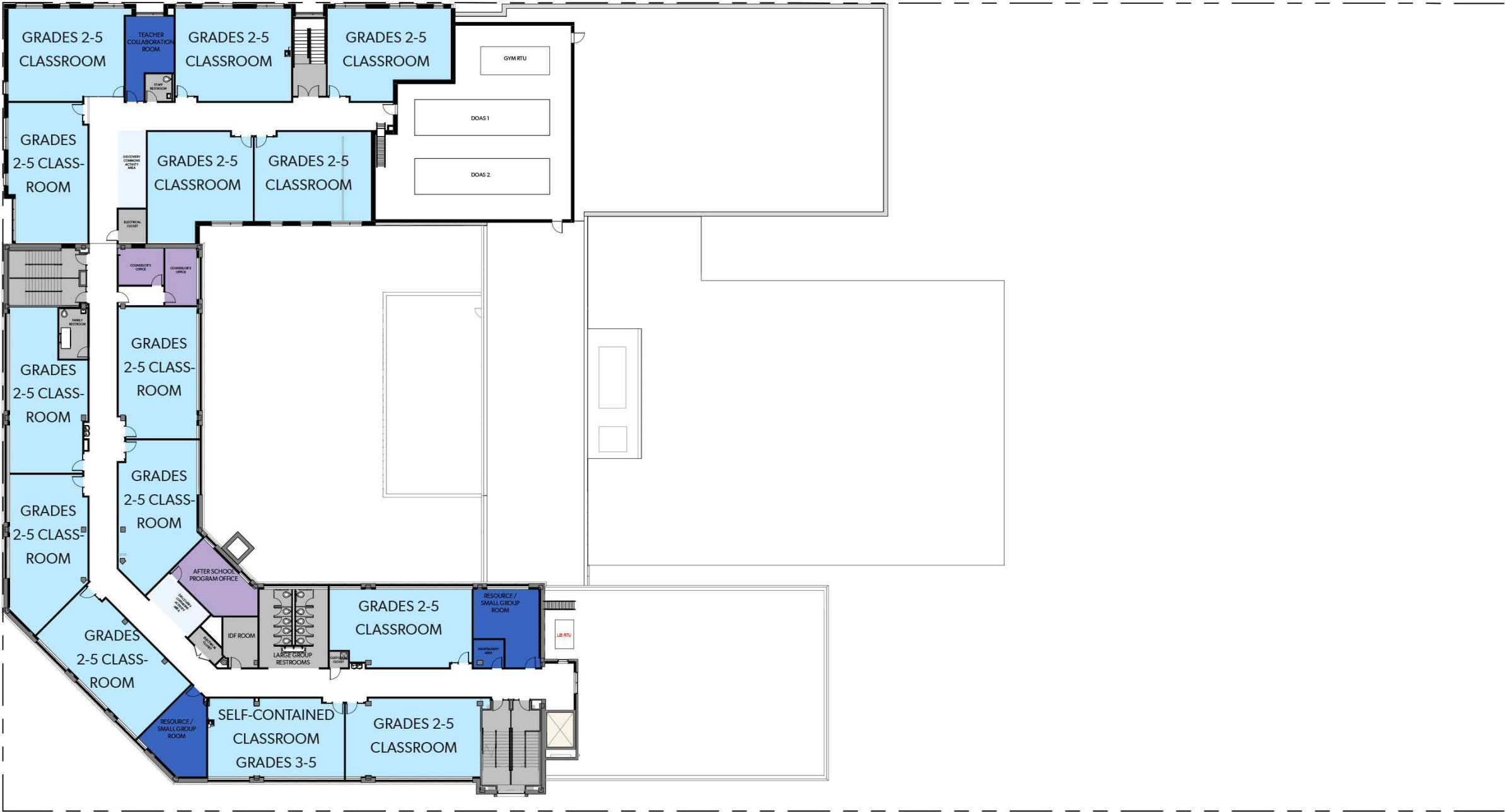






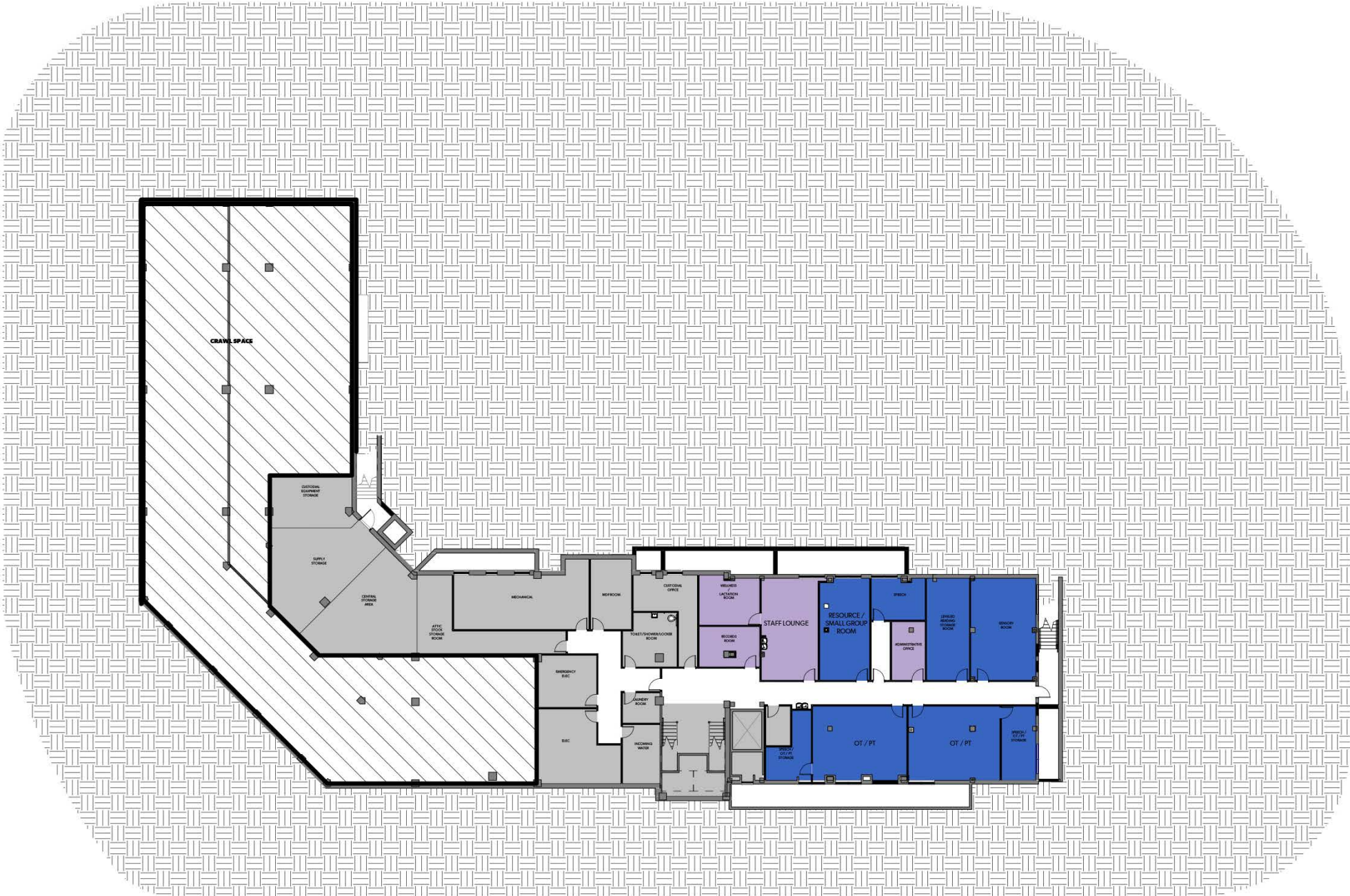
- ACADEMIC
- DINING
- MUSIC
- LIBRARY
- GYM & STAGE
- ADMIN
- HEALTH
- AFTER HOURS ZONE

LEVEL 2



- ACADEMIC
- DINING
- MUSIC
- LIBRARY
- GYM & STAGE
- ADMIN
- HEALTH
- AFTER HOURS ZONE

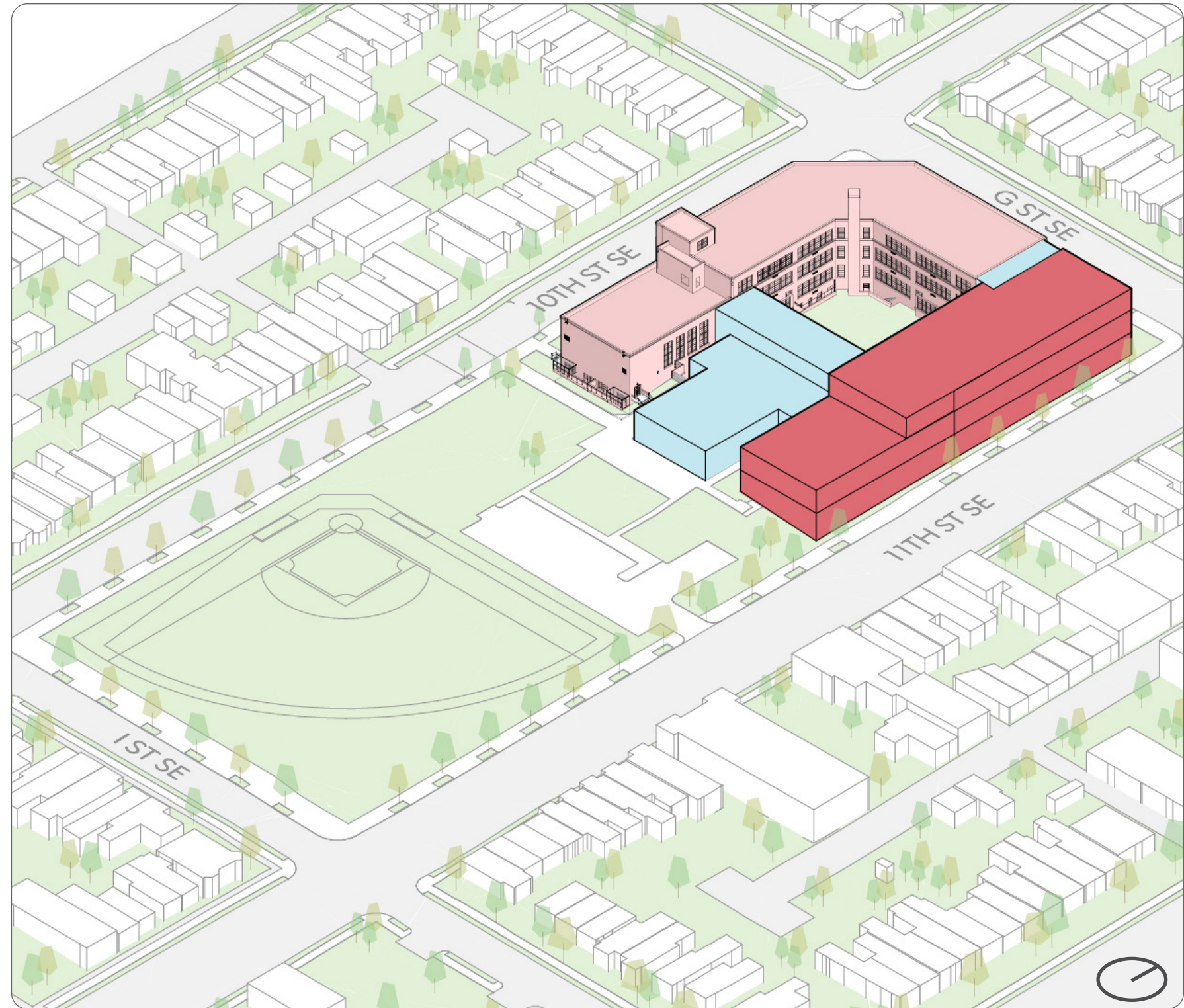
LEVEL 3



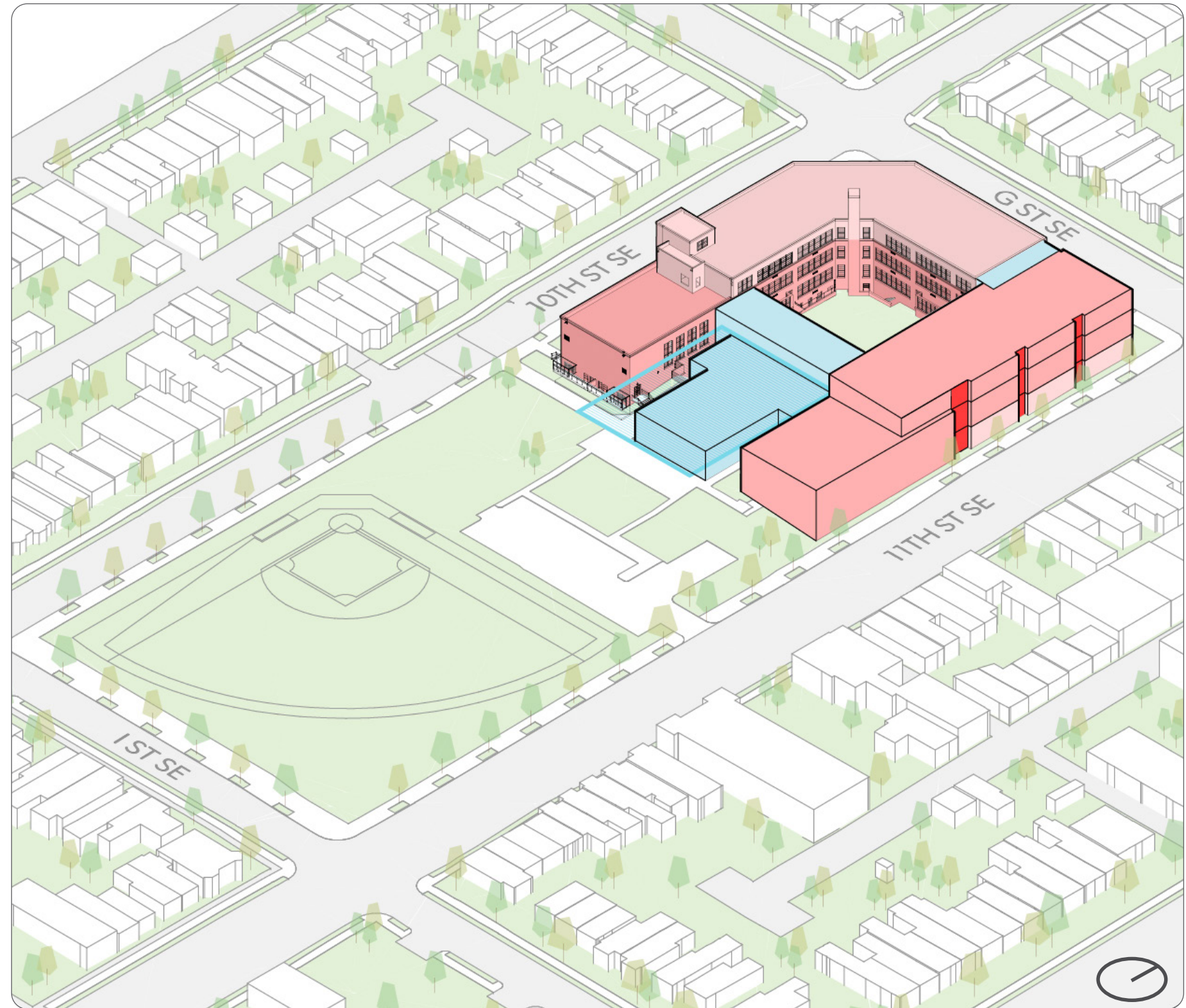
- ACADEMIC
- DINING
- MUSIC
- LIBRARY
- GYM & STAGE
- ADMIN
- HEALTH
- AFTER HOURS ZONE

BASEMENT

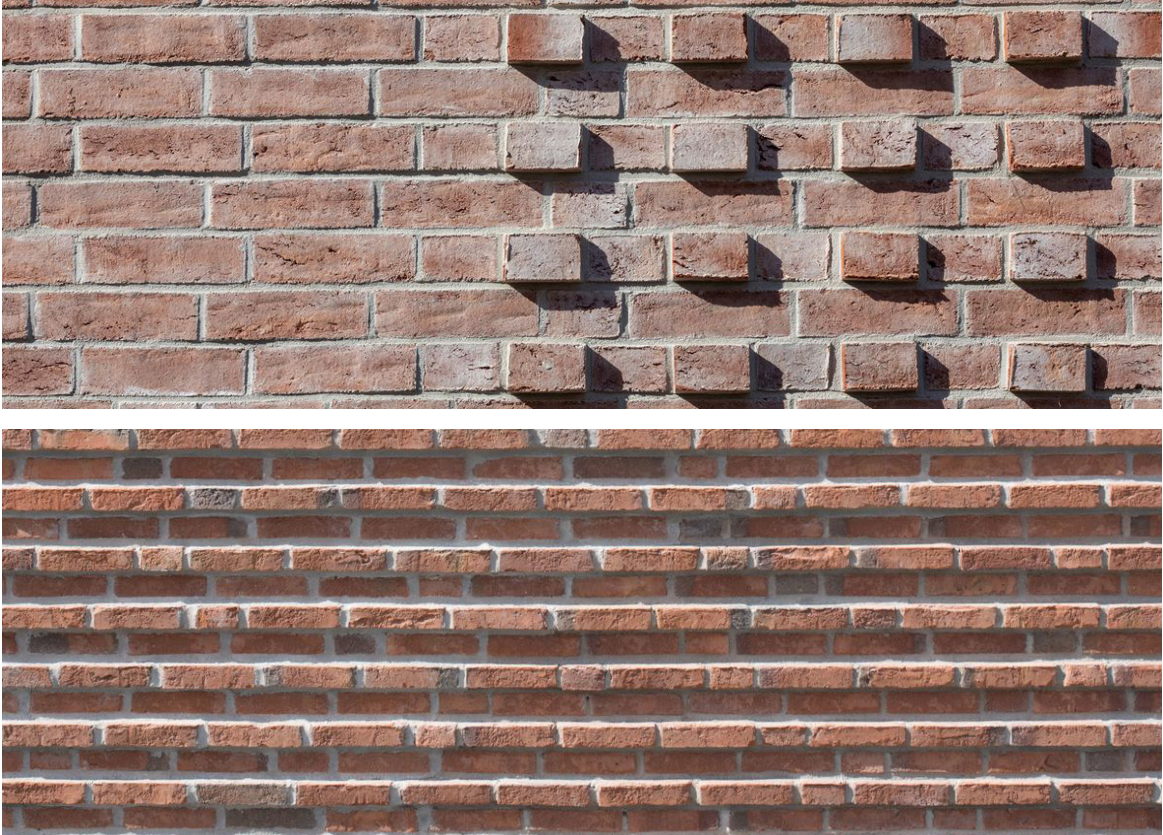
- Red brick facade at classroom and gym bar along 11th street is sympathetic to historic materiality
- Connector volume creates material break between existing and new



- Verticals in classroom bar breaks down the scale
- Large canopy element distinguishes dining volume and creates shade



BRICK DETAILING



EXISTING BUILDING



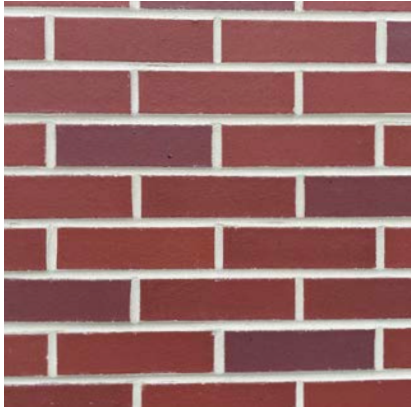
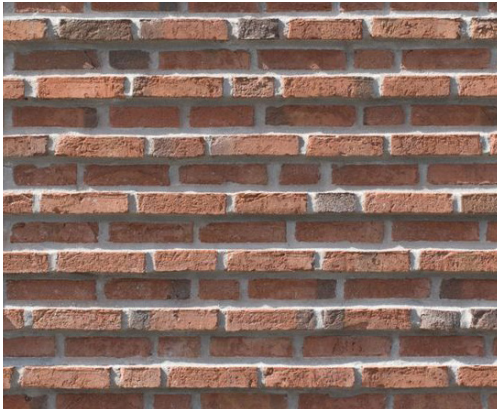
GLASS | METAL



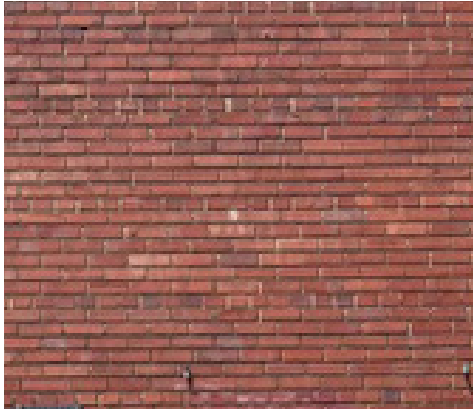


*Note that final door configuration at existing entry to be coordinated with HPO staff and DCPS.

NEW ADDITION



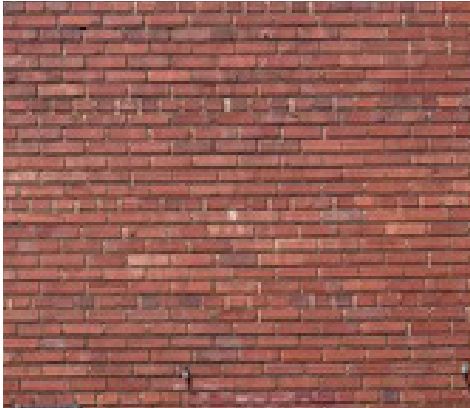
EXISTING BUILDING





EXISTING BUILDING

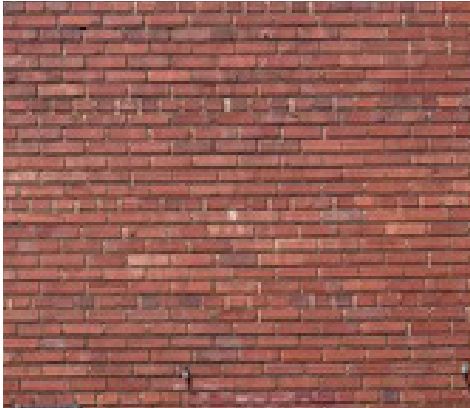
NEW ADDITION





EXISTING BUILDING

NEW ADDITION





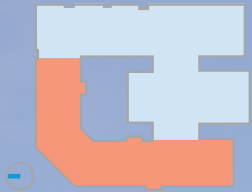
FENCING WILL BE PRESENT. REMOVED FOR GRAPHIC CLARITY



FENCING WILL BE PRESENT. REMOVED FOR GRAPHIC CLARITY

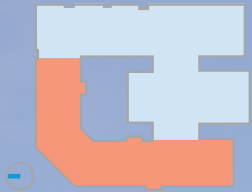


PLACEHOLDER PUBLIC ART





PLACEHOLDER PUBLIC ART



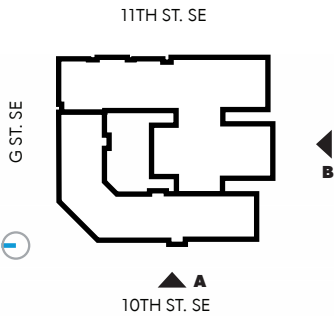
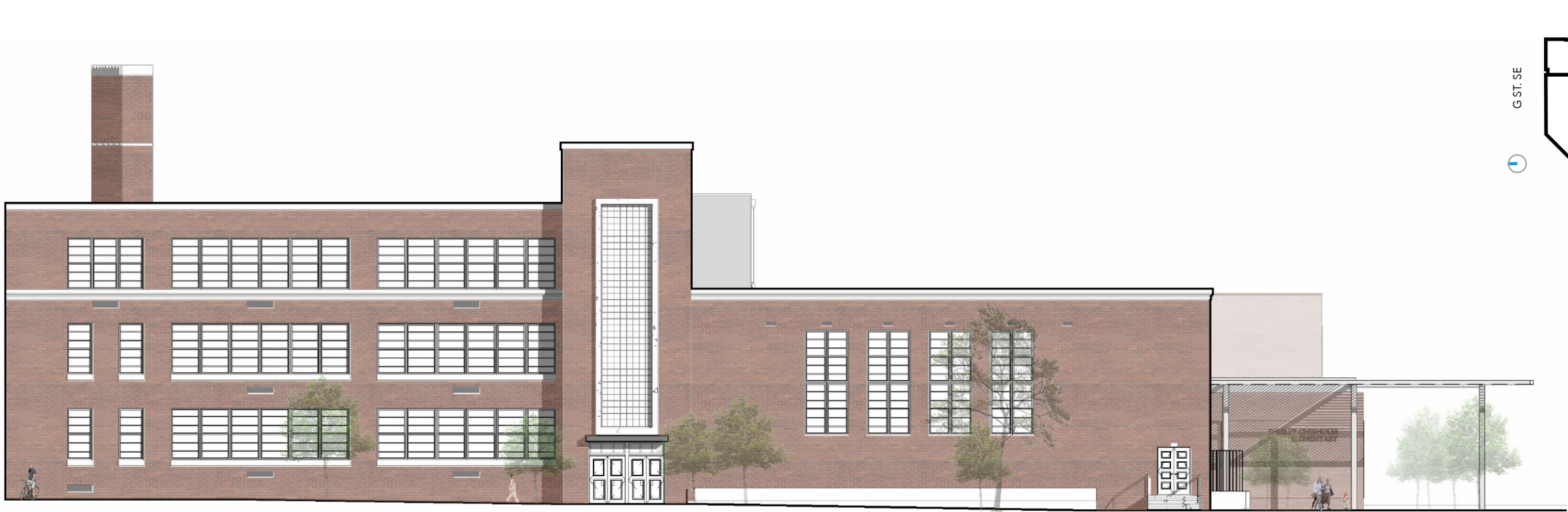




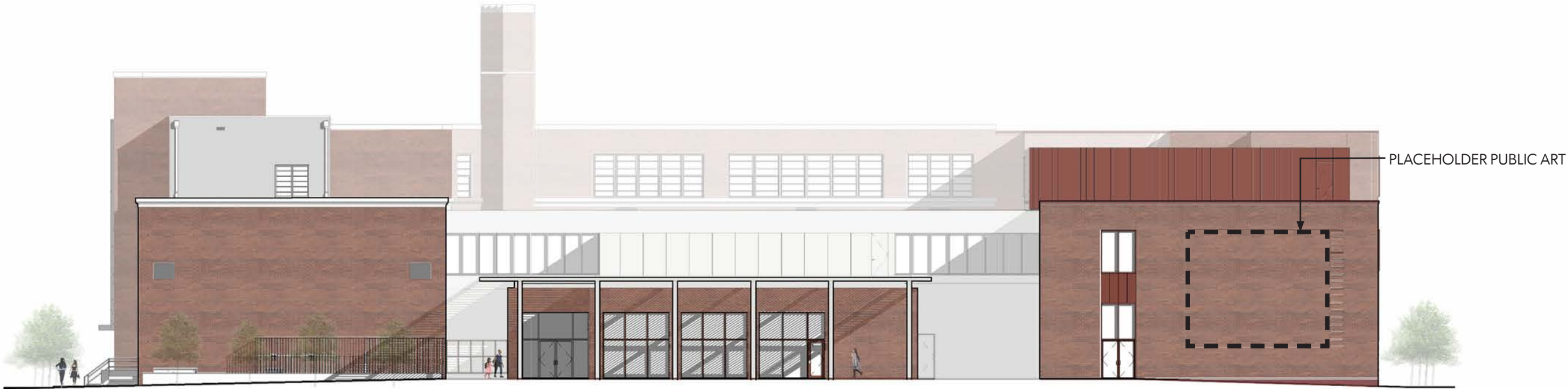
ELEVATION A



ELEVATION B

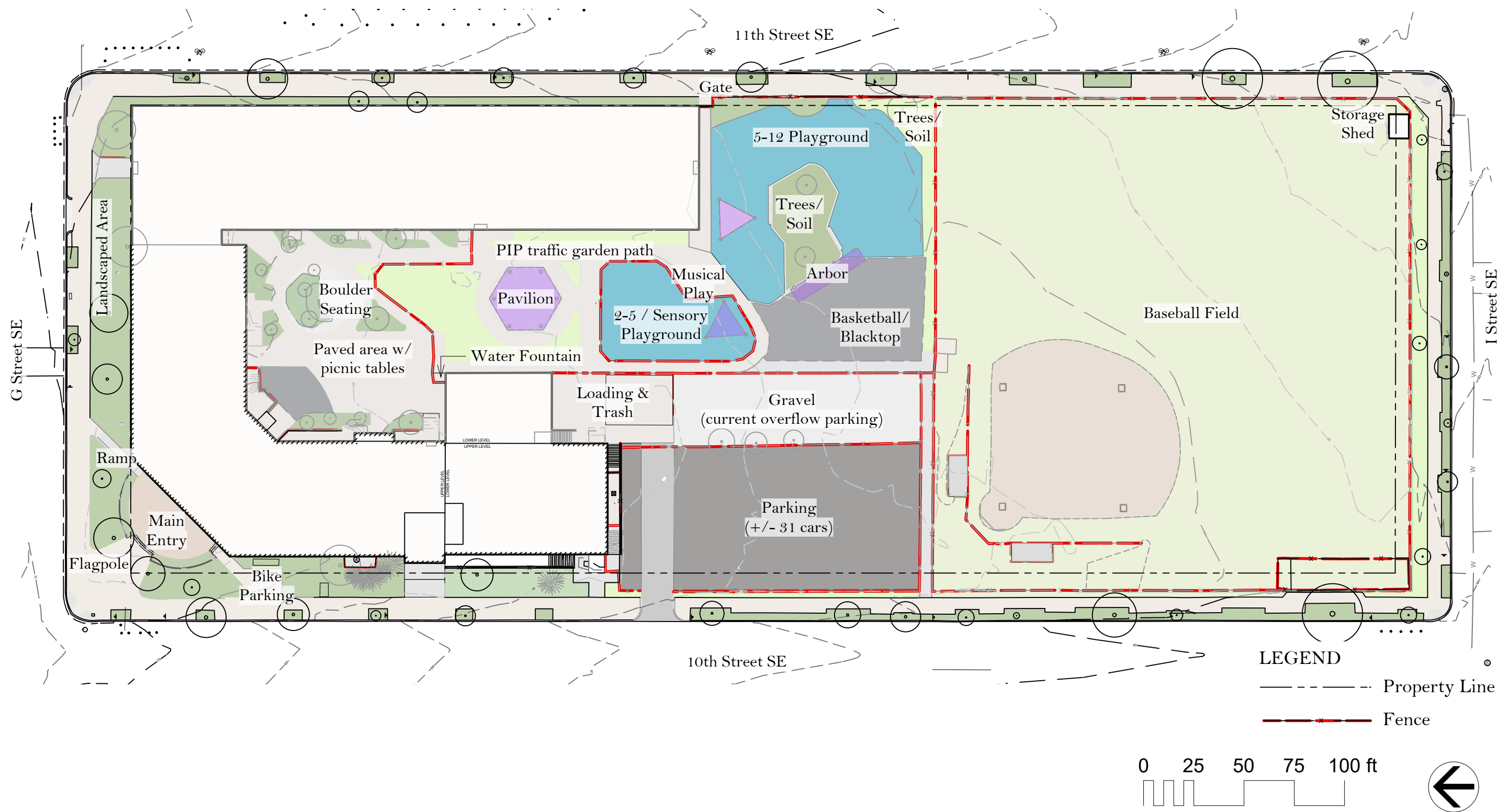


ELEVATION A



ELEVATION B

EXISTING SITE PLAN



PROGRAM ORGANIZATION

LEGEND

Ed Spec Items

Vehicular/ Parking

Stormwater Mgmt

Play Areas

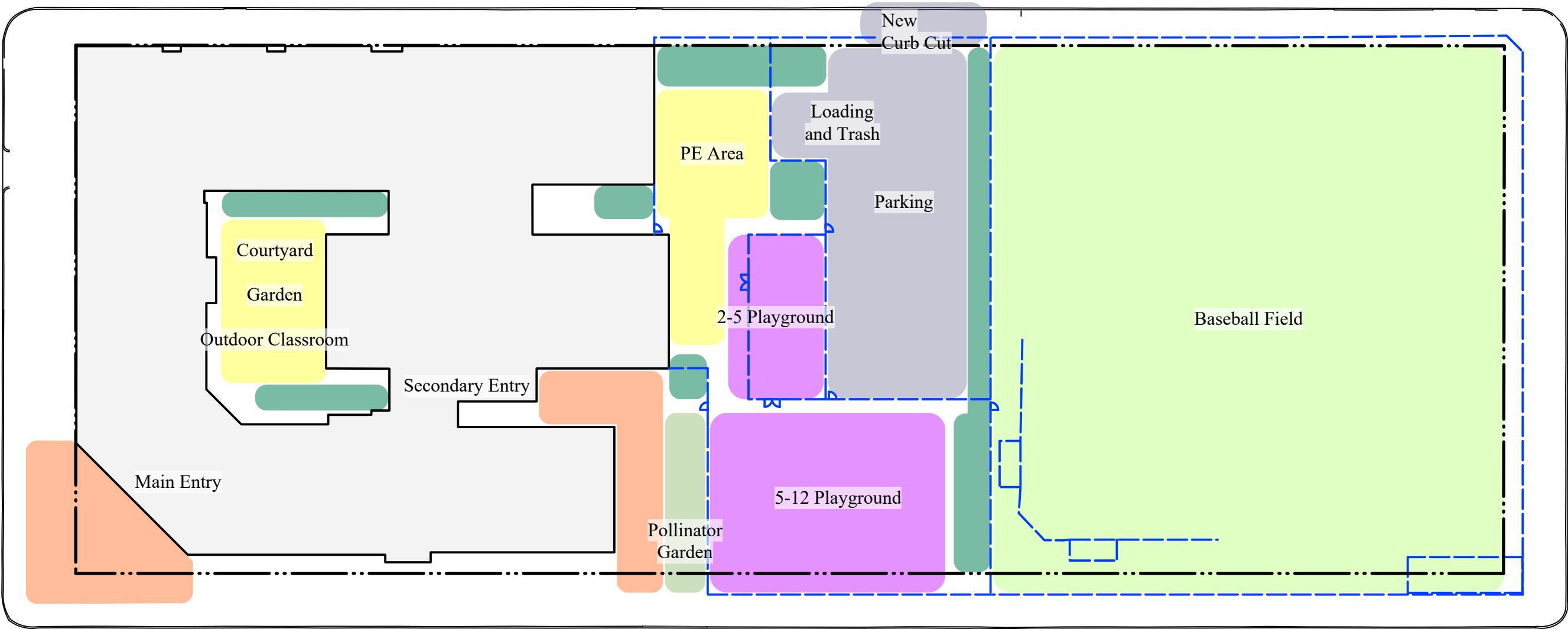
Existing Field

Entry

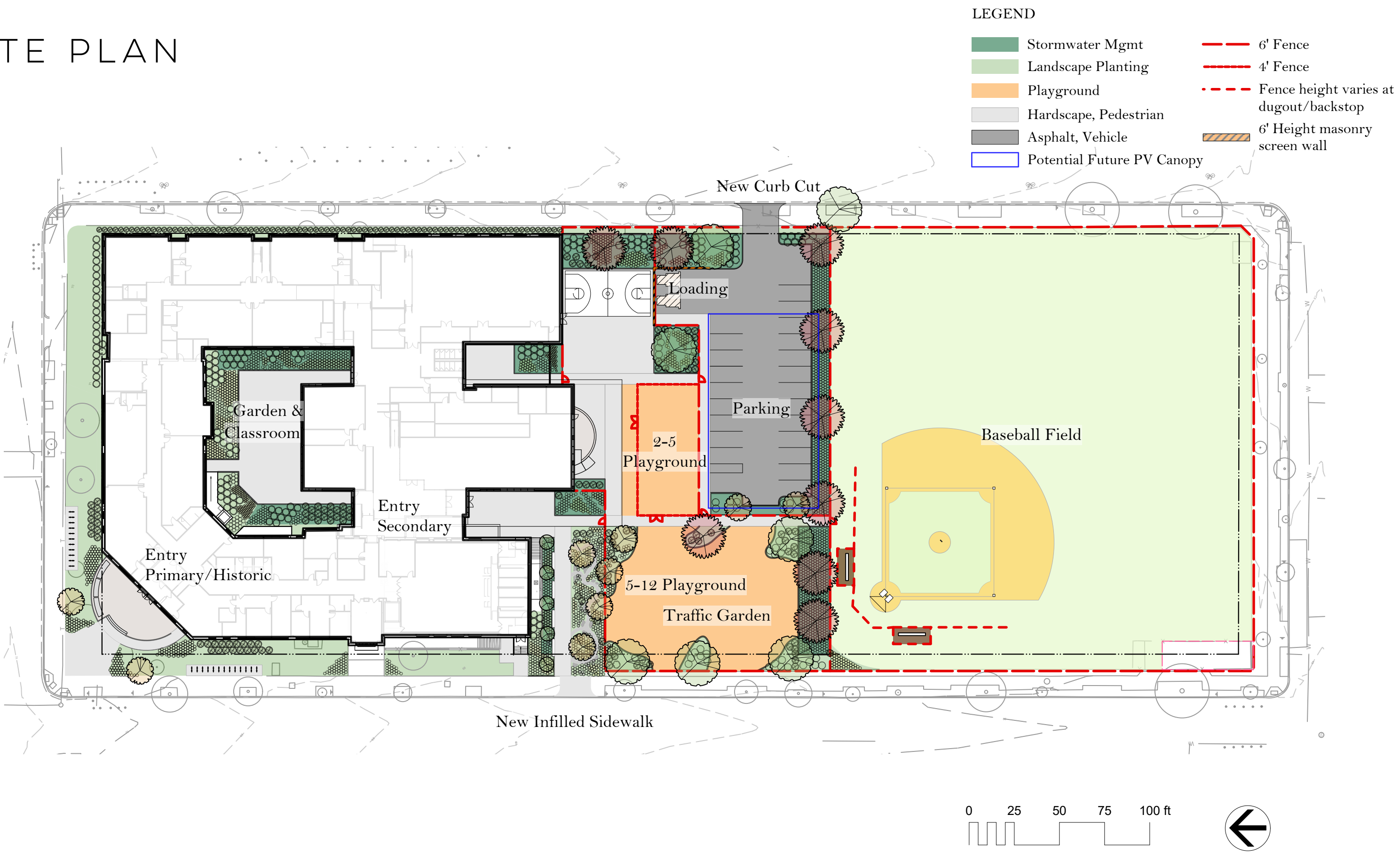
Property Line

Fence (height varies, 6' at perim)

Pollinator Garden



SITE PLAN



PRECEDENT IMAGES



Age-appropriate play equipment in multicolor poured in place surfacing with plantings around the perimeter



Facilitation of different needs and multi-lingual school programming



Courtyard includes mix of plantings at the edges and hardscaped areas for programming



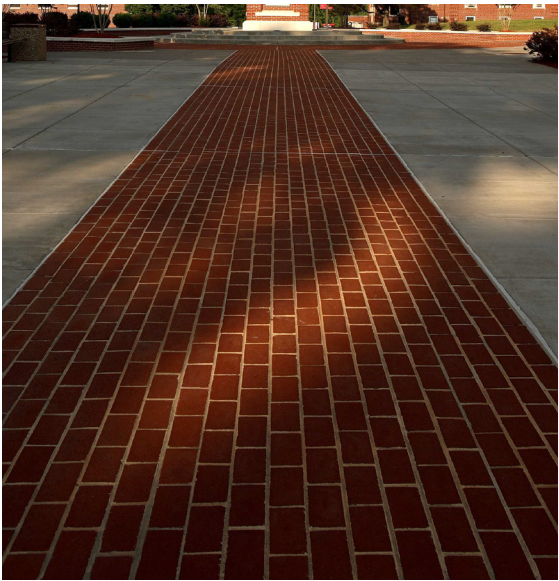
Reuse of existing site boulders



Pollinator gardens with child-scaled paths



Stormwater management

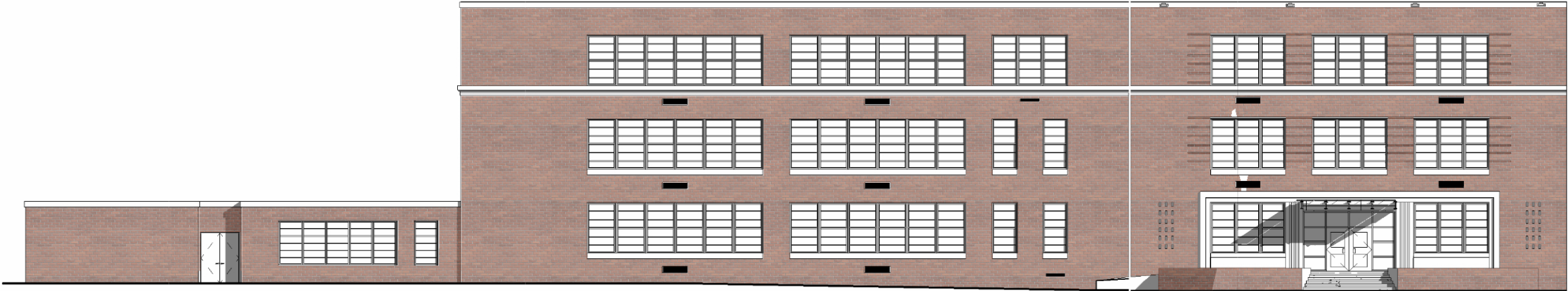
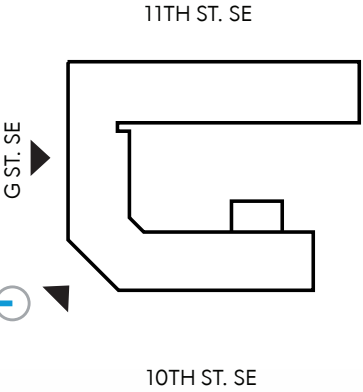


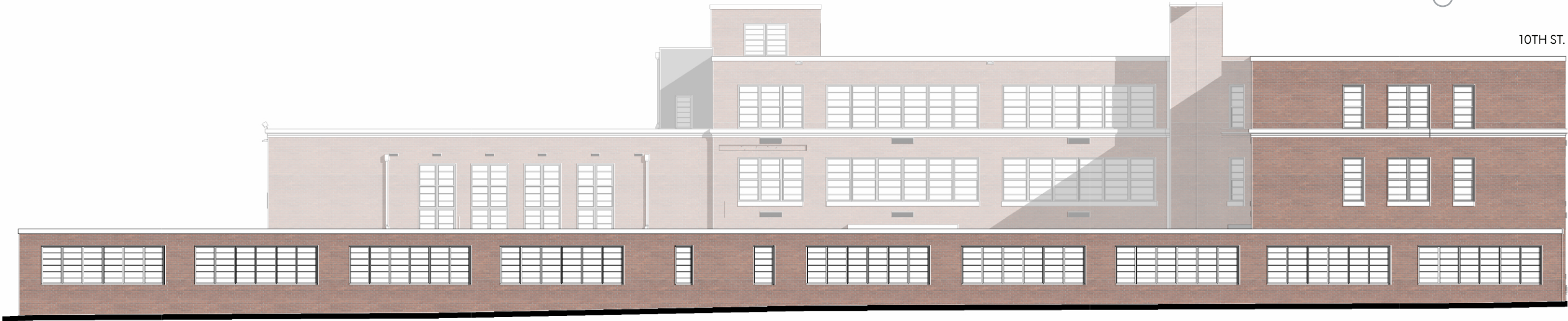
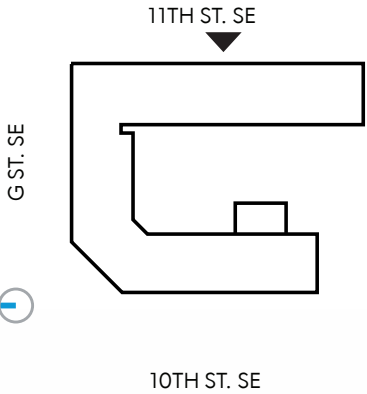
Path materials indicate sight lines and directionality in a mix of brick, concrete, and pavers

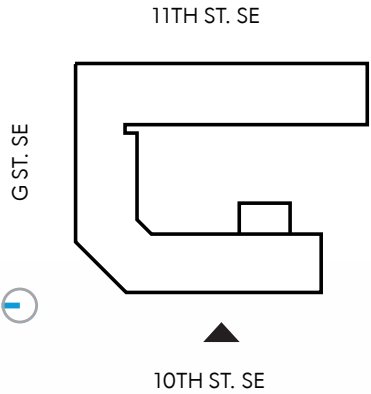
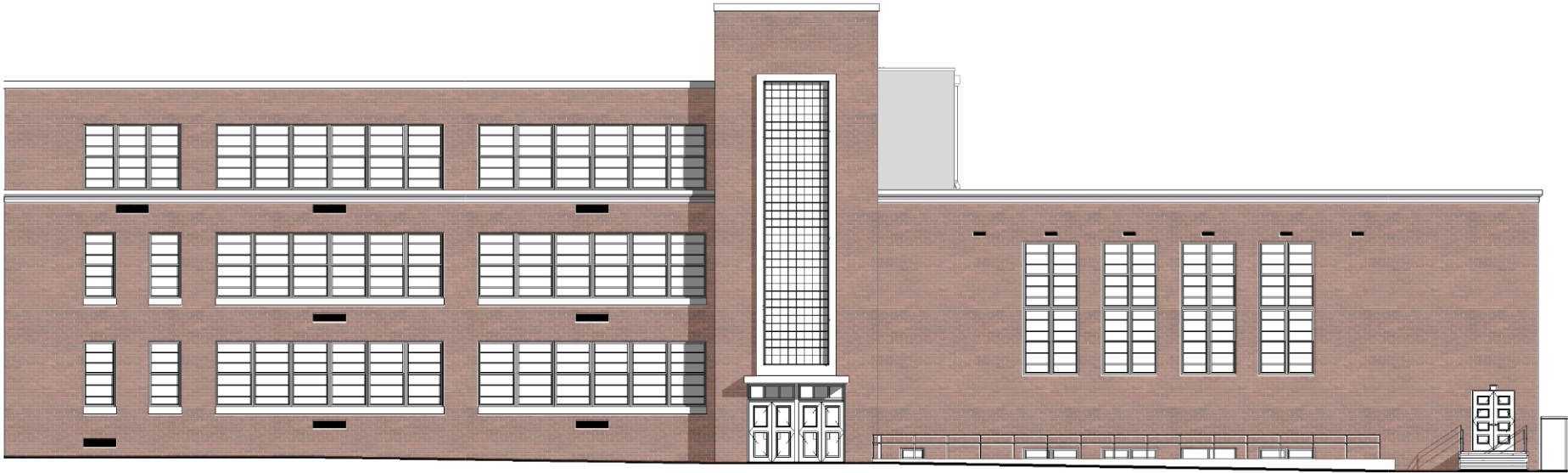


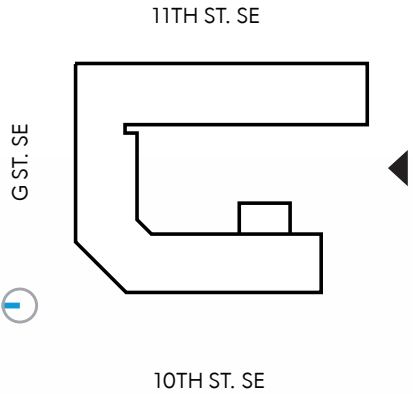
STUDIOS

SAN FRANCISCO • WASHINGTON, DC • NEW YORK • LOS ANGELES • PARIS • LYON





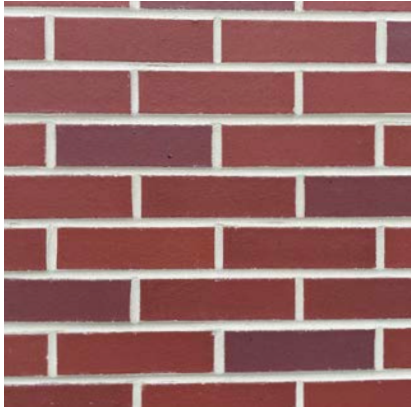
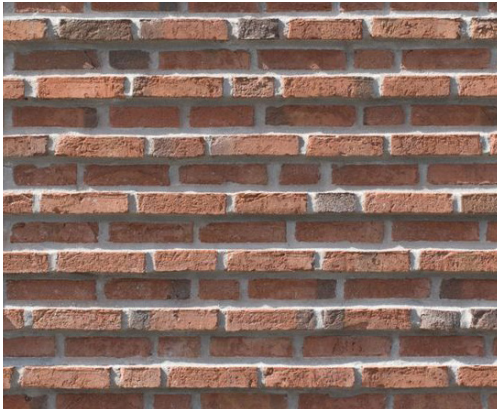




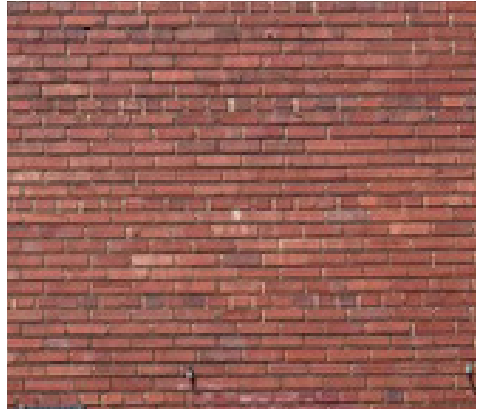


*Note that final door configuration at existing entry to be coordinated with HPO staff and DCPS.

NEW ADDITION

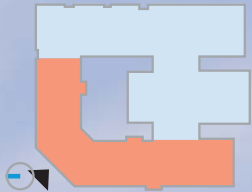


EXISTING BUILDING





*Note that final door configuration at existing entry to be coordinated with HPO staff and DCPS.



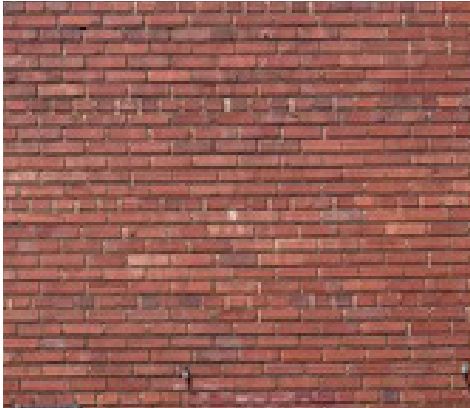


*Note that final door configuration at existing entry to be coordinated with HPO staff and DCPS.



EXISTING BUILDING

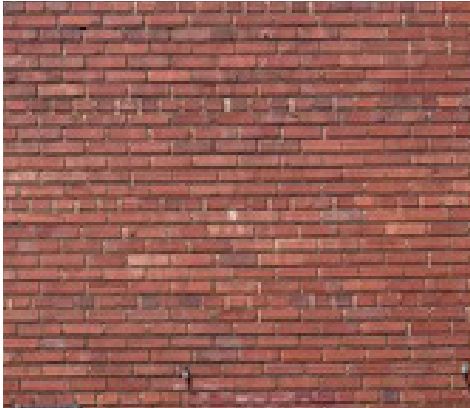
NEW ADDITION





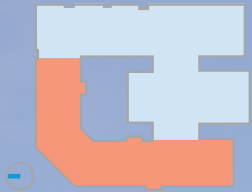
EXISTING BUILDING

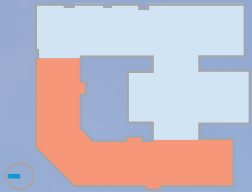
NEW ADDITION





PLACEHOLDER PUBLIC ART



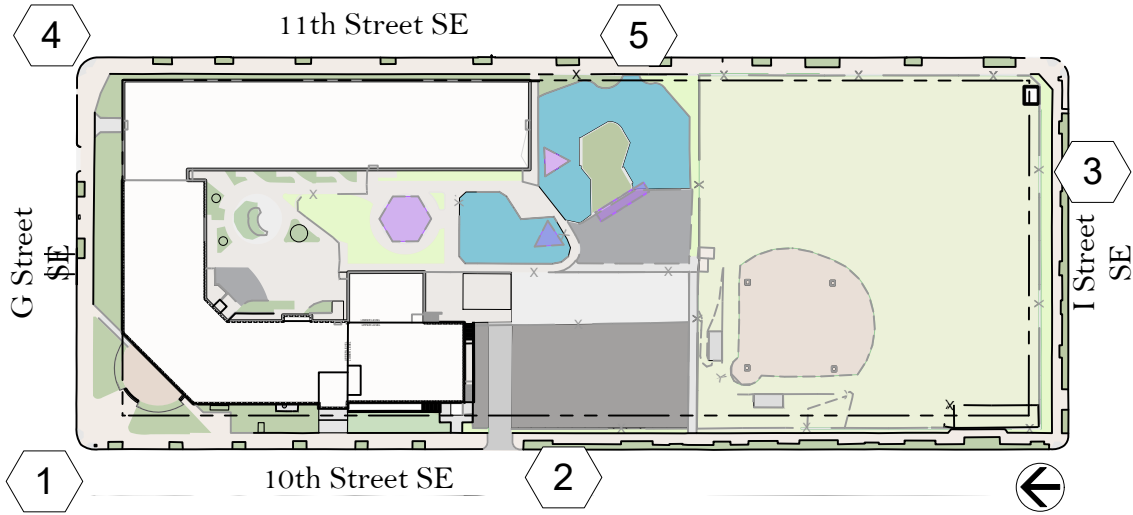


PLACEHOLDER PUBLIC ART

IMPACT SE



EXISTING CONDITIONS



SITE CIRCULATION

- LEGEND
- Pedestrian Circulation on site

Pedestrian Circulation off site

Vehicular Circulation

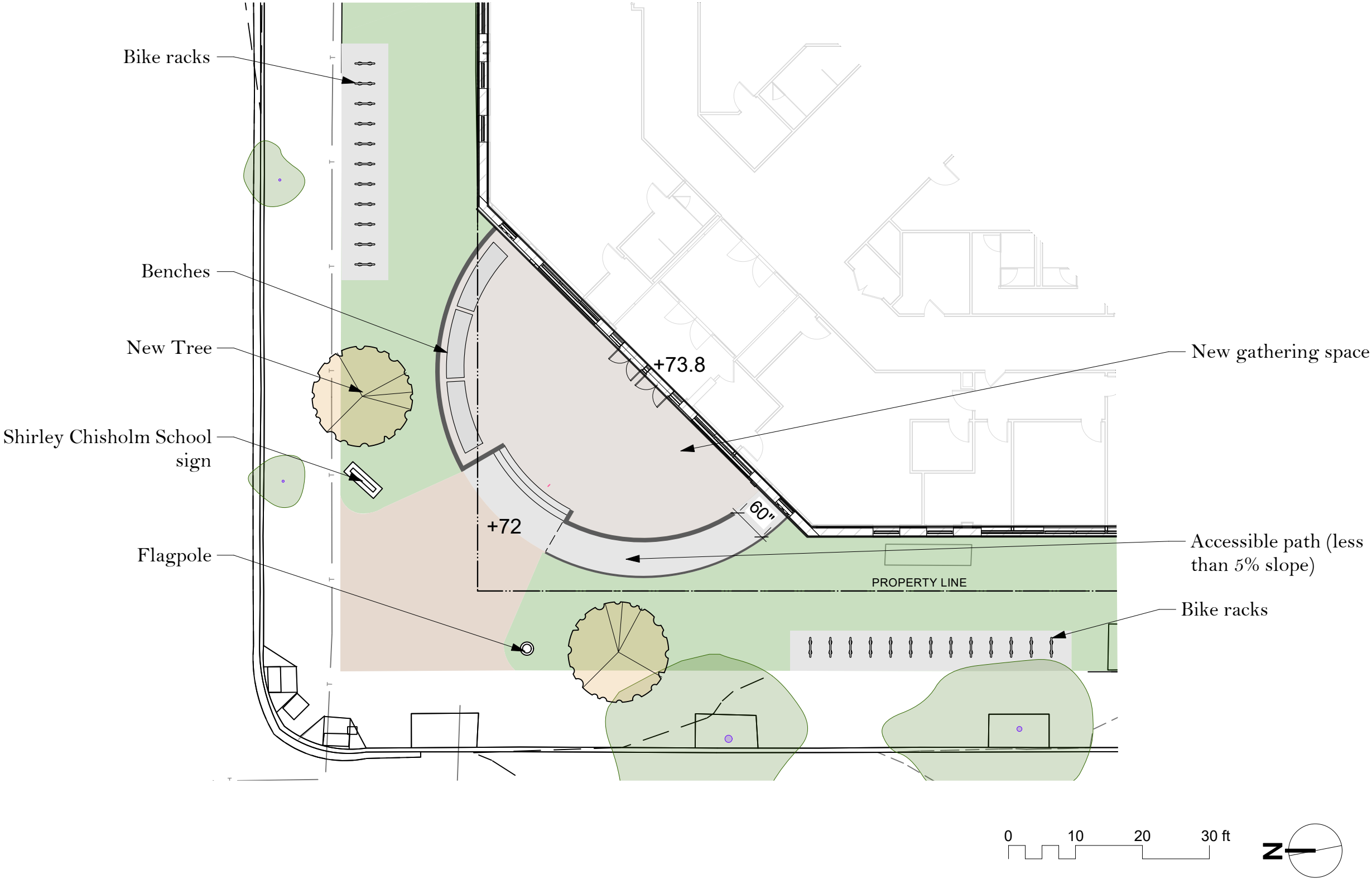
Deliveries

Bike Parking

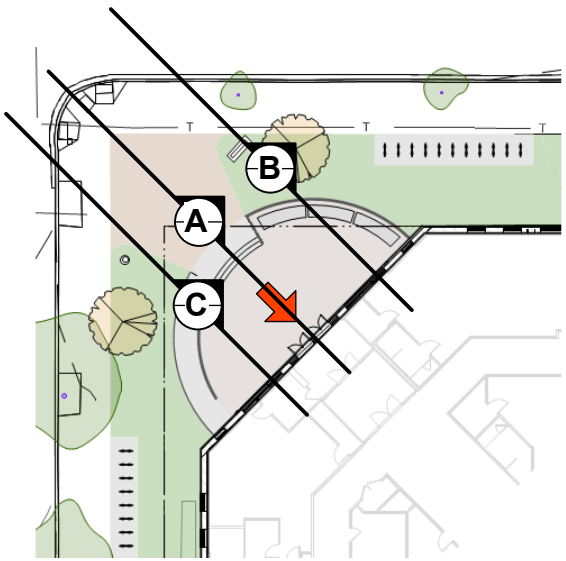
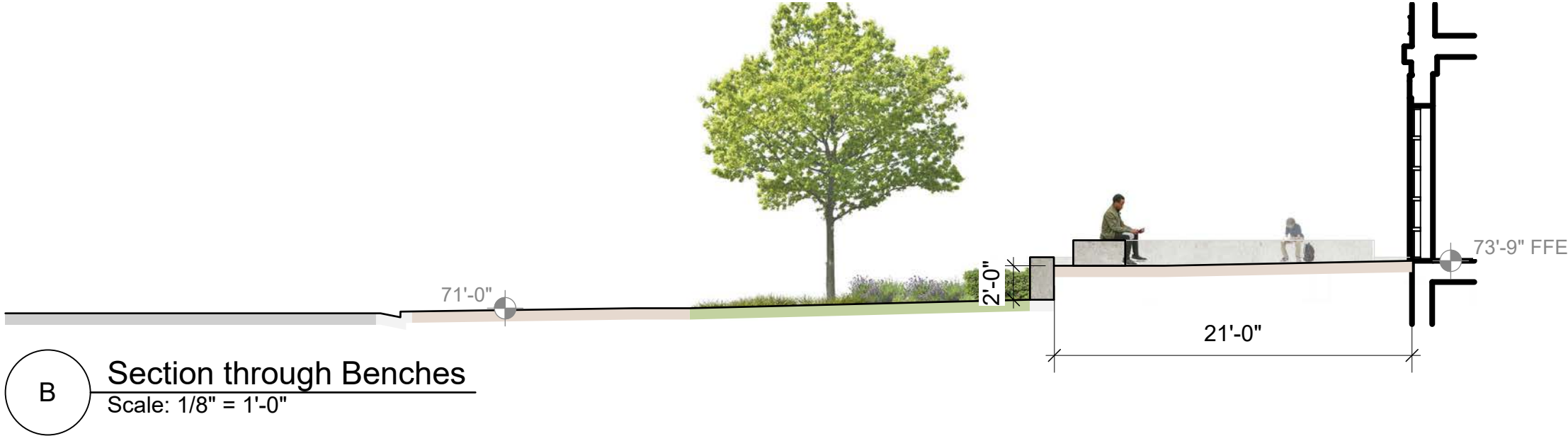
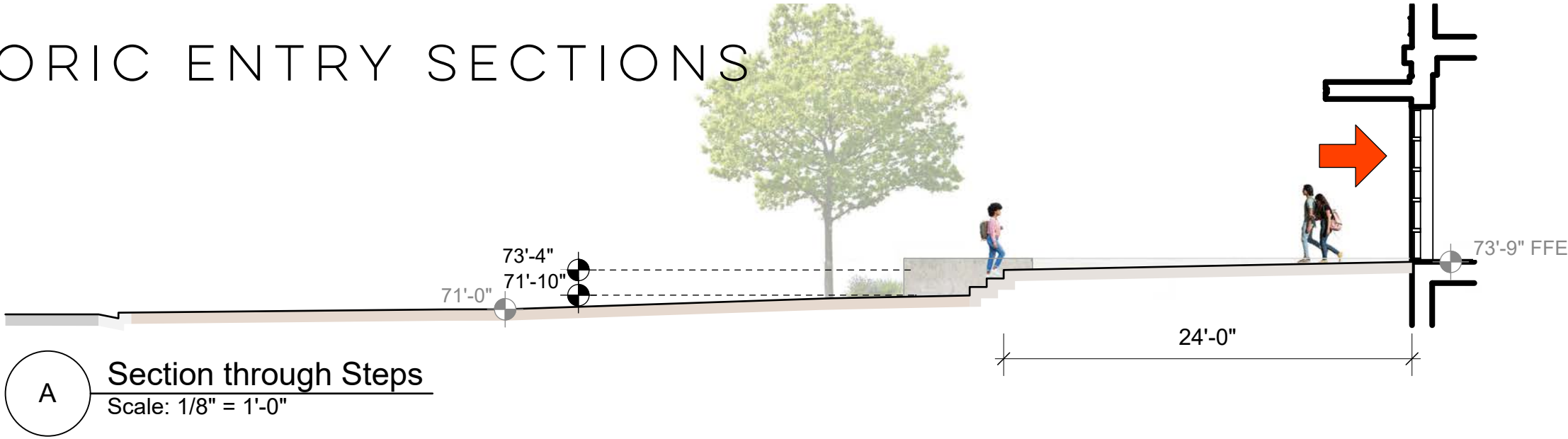
Property Line

Fence
- The diagram illustrates the site circulation for DGS DCPS Chisholm Elementary School. It features a central school building with several outdoor spaces and circulation paths. Key areas include the Main Entry, Secondary Entry, Courtyard, Garden, Outdoor Classroom, Cafeteria, PE Area, Loading and Trash, Parking, 2-5 Playground, 5-12 Playground, Pollinator Garden, and Baseball Field. Circulation paths are color-coded: purple for on-site pedestrian, orange for off-site pedestrian, teal for vehicular, and green for deliveries. A dashed blue line indicates the fence, and a dotted black line indicates the property line. A scale bar (0-100 ft) and a north arrow are located at the bottom right.
- 0 25 50 75 100 ft
- STUDIOAKA
- DGS DCPS CHISHOLM ELEMENTARY SCHOOL
- 2026

ENLARGEMENT - HISTORIC ENTRY PROPOSED DESIGN



HISTORIC ENTRY SECTIONS



- EXISTING SPOT ELEVATION
- PROPOSED SPOT ELEVATION
- BUILDING ENTRY

PRECEDENT IMAGES - TRAFFIC GARDENS



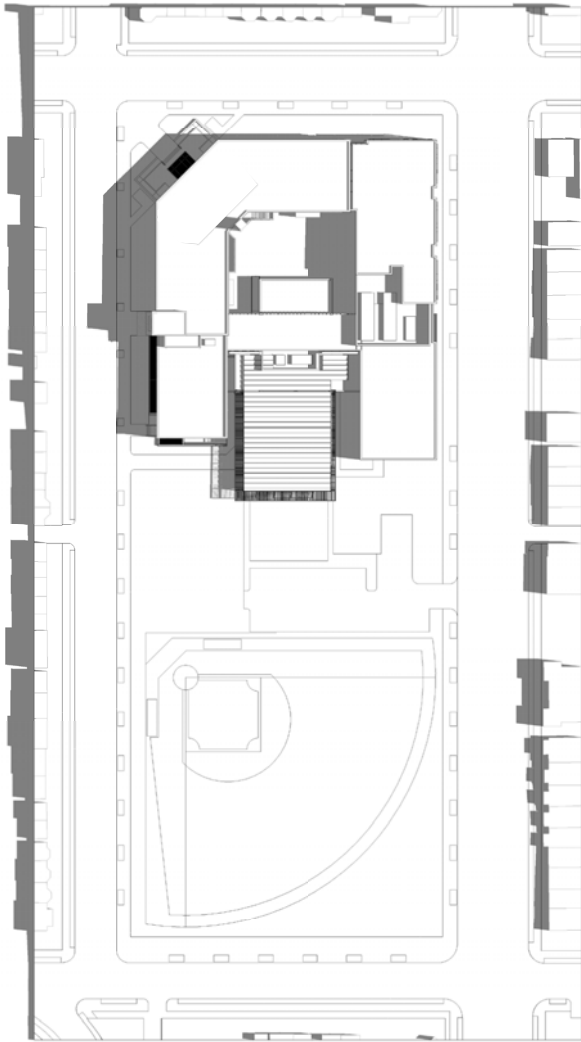
Traffic garden forms loops around play equipment - recommended for Chisholm due to space constraints



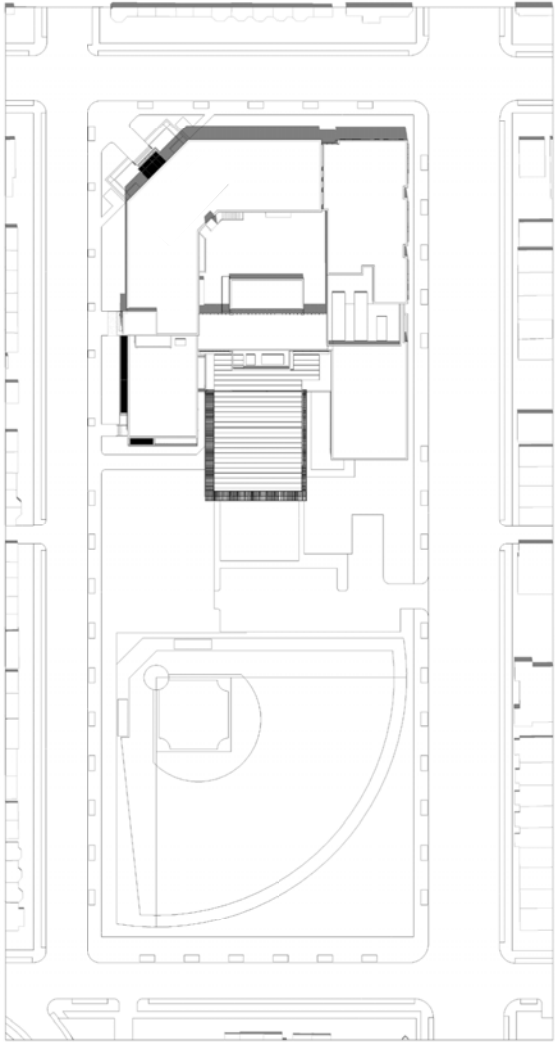
Stand alone traffic garden



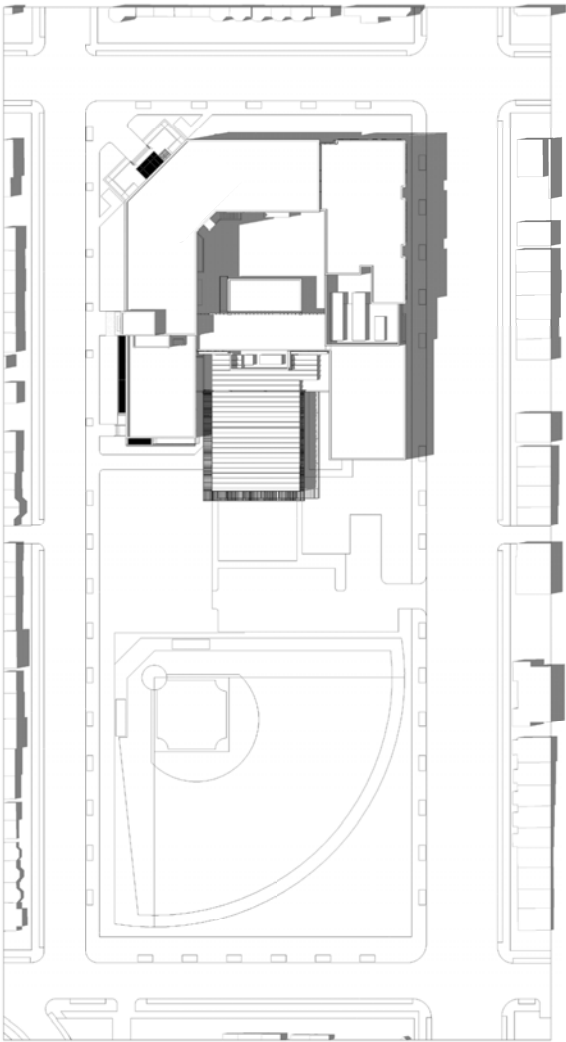
Traffic garden integrated with sports blacktop



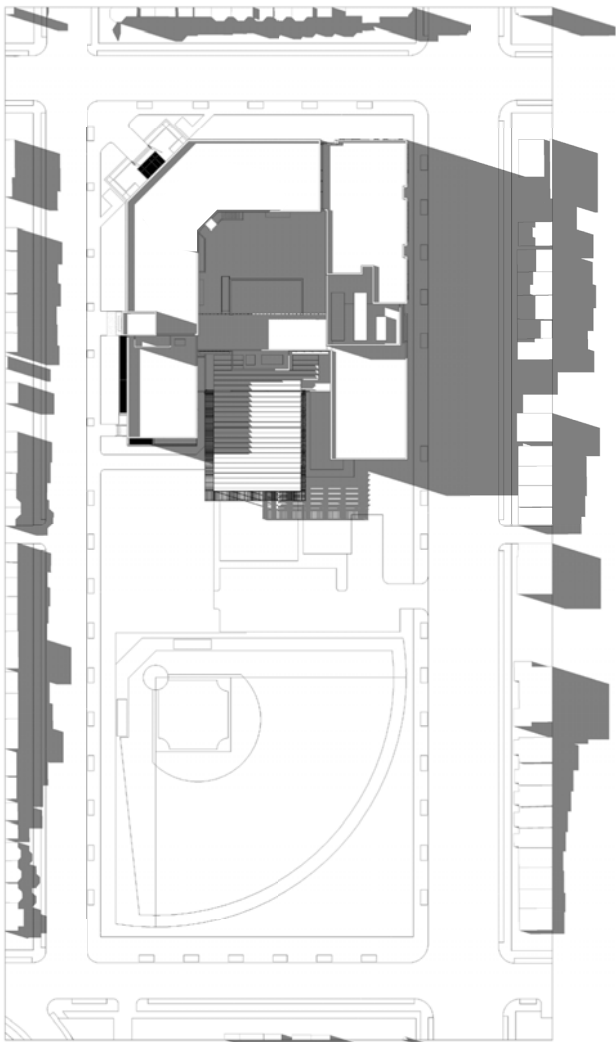
SUMMER SOLSTICE - 9 AM



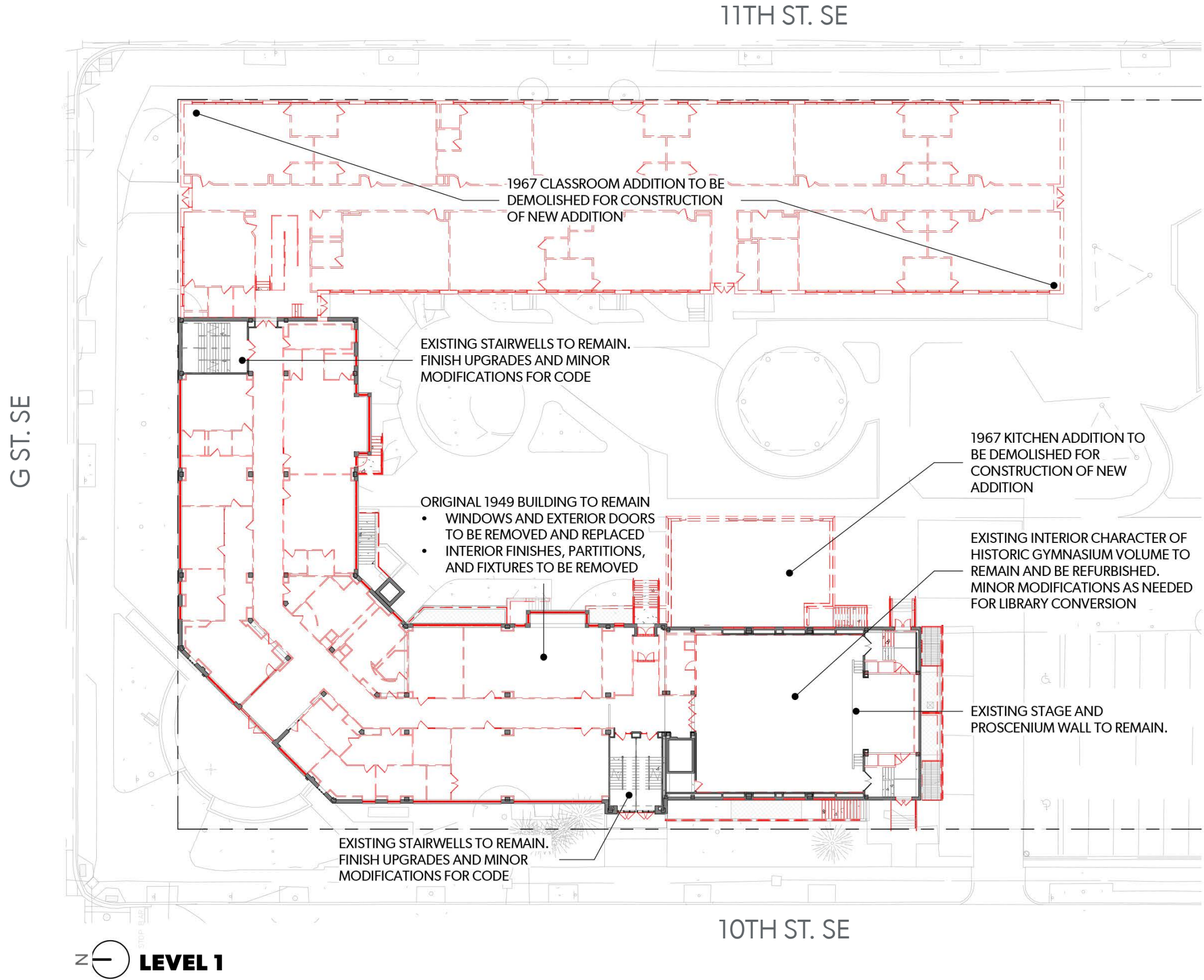
SUMMER SOLSTICE - 12 PM

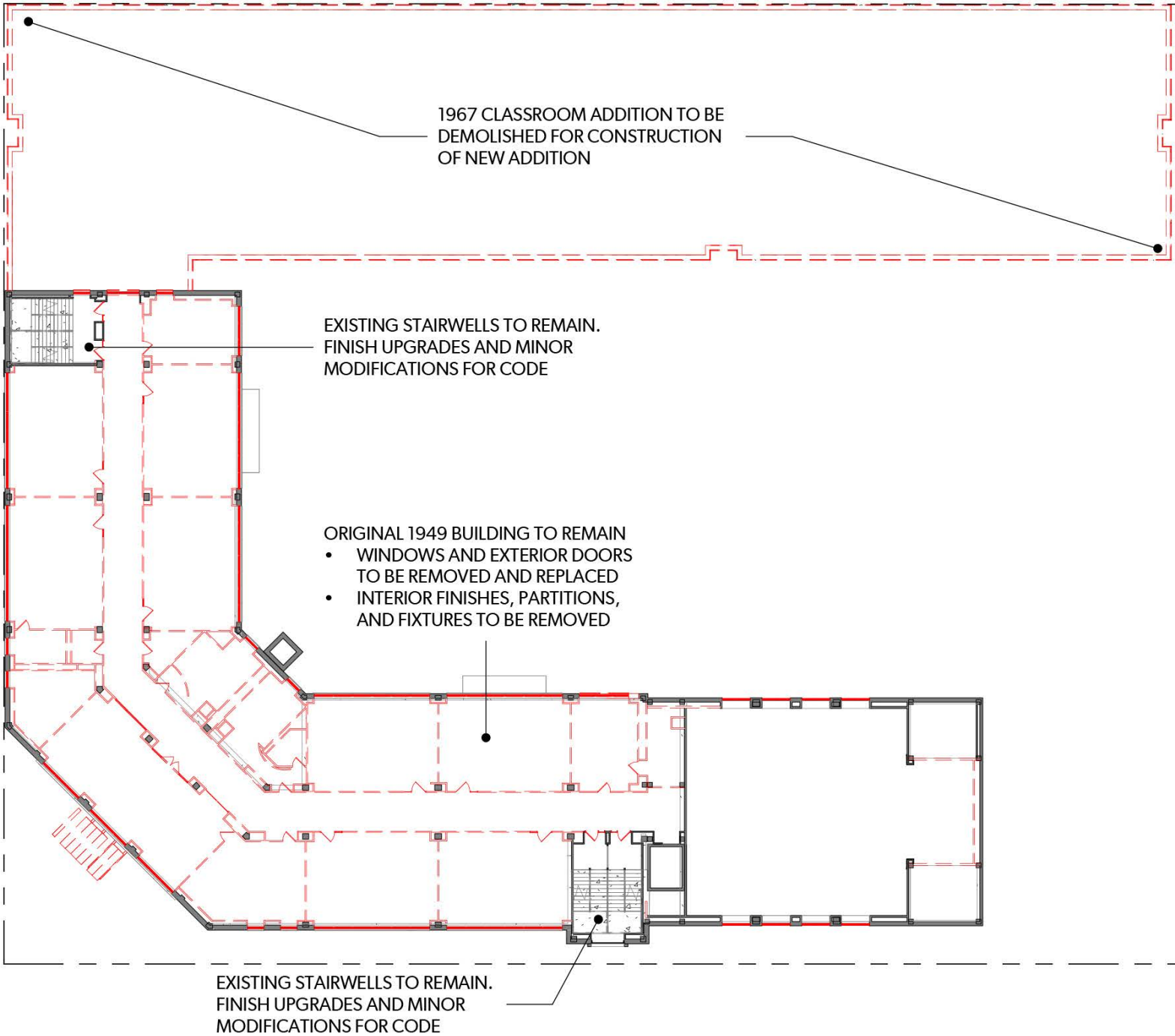


SUMMER SOLSTICE - 3 PM



SUMMER SOLSTICE - 6 PM



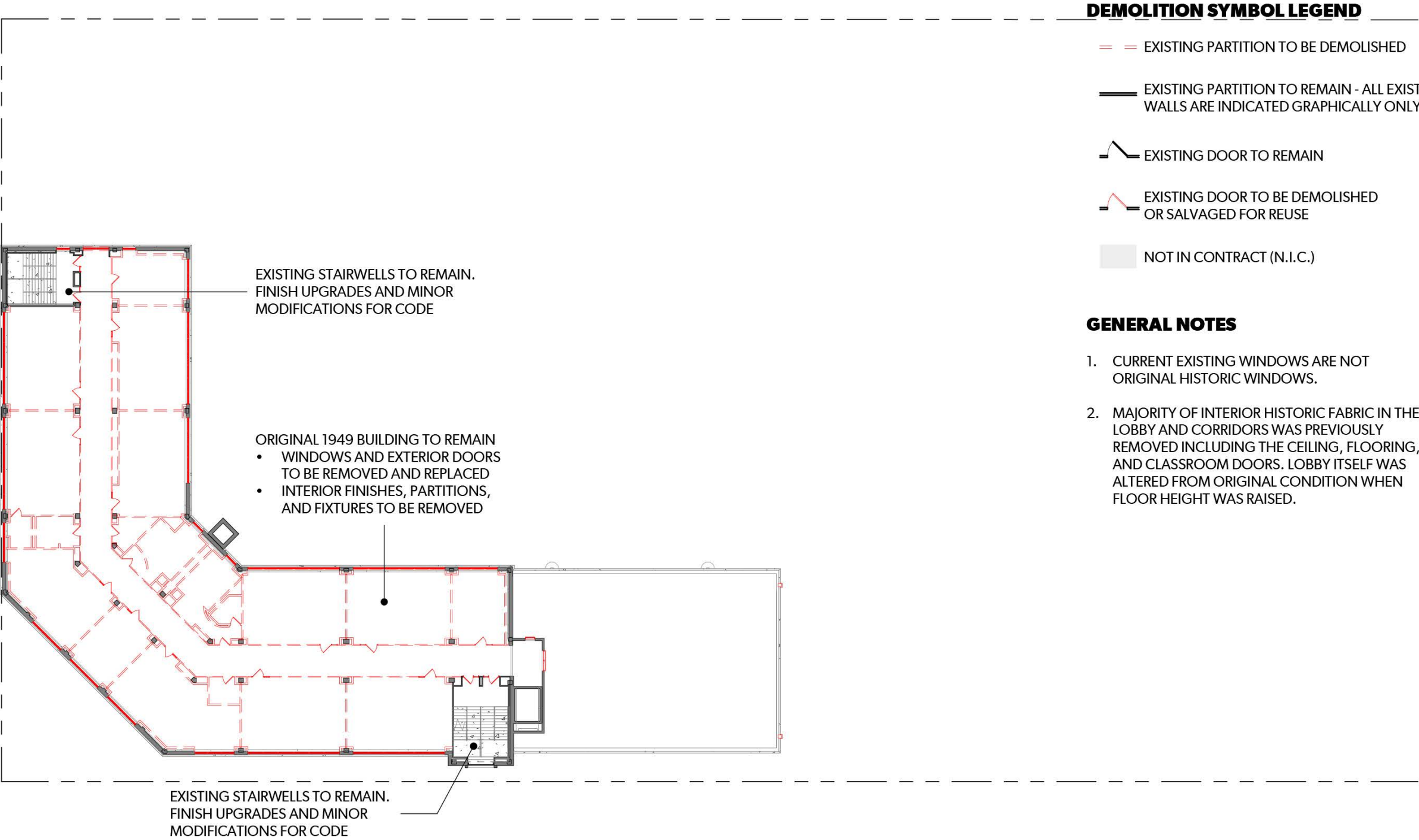


DEMOLITION SYMBOL LEGEND

- EXISTING PARTITION TO BE DEMOLISHED
- EXISTING PARTITION TO REMAIN - ALL EXISTING WALLS ARE INDICATED GRAPHICALLY ONLY.
- EXISTING DOOR TO REMAIN
- EXISTING DOOR TO BE DEMOLISHED OR SALVAGED FOR REUSE
- NOT IN CONTRACT (N.I.C.)

GENERAL NOTES

- CURRENT EXISTING WINDOWS ARE NOT ORIGINAL HISTORIC WINDOWS.
- MAJORITY OF INTERIOR HISTORIC FABRIC IN THE LOBBY AND CORRIDORS WAS PREVIOUSLY REMOVED INCLUDING THE CEILING, FLOORING, AND CLASSROOM DOORS. LOBBY ITSELF WAS ALTERED FROM ORIGINAL CONDITION WHEN FLOOR HEIGHT WAS RAISED.



GENERAL NOTES

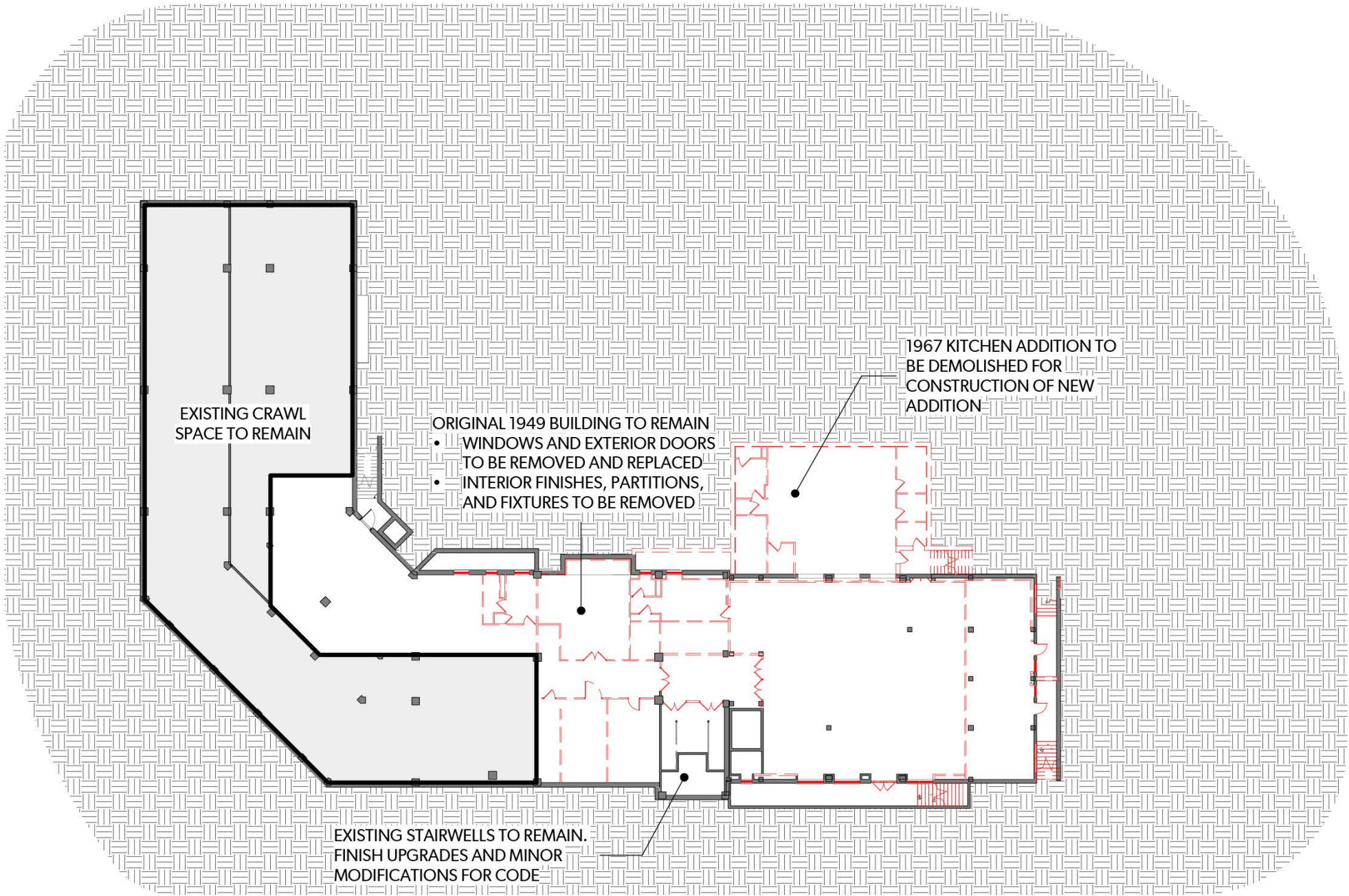
1. CURRENT EXISTING WINDOWS ARE NOT ORIGINAL HISTORIC WINDOWS.
2. MAJORITY OF INTERIOR HISTORIC FABRIC IN THE LOBBY AND CORRIDORS WAS PREVIOUSLY REMOVED INCLUDING THE CEILING, FLOORING, AND CLASSROOM DOORS. LOBBY ITSELF WAS ALTERED FROM ORIGINAL CONDITION WHEN FLOOR HEIGHT WAS RAISED.

DEMOLITION SYMBOL LEGEND

- EXISTING PARTITION TO BE DEMOLISHED
- EXISTING PARTITION TO REMAIN - ALL EXISTING WALLS ARE INDICATED GRAPHICALLY ONLY.
- EXISTING DOOR TO REMAIN
- EXISTING DOOR TO BE DEMOLISHED OR SALVAGED FOR REUSE
- NOT IN CONTRACT (N.I.C.)

GENERAL NOTES

- CURRENT EXISTING WINDOWS ARE NOT ORIGINAL HISTORIC WINDOWS.
- MAJORITY OF INTERIOR HISTORIC FABRIC IN THE LOBBY AND CORRIDORS WAS PREVIOUSLY REMOVED INCLUDING THE CEILING, FLOORING, AND CLASSROOM DOORS. LOBBY ITSELF WAS ALTERED FROM ORIGINAL CONDITION WHEN FLOOR HEIGHT WAS RAISED.



BASEMENT