

Modification to the Second Infantry Division Memorial

Second Indianhead Division
Association Memorials Foundation

Aves Thompson, Chair

Architect

Beyer Blinder Belle

Landscape Architect

Oehme, van Sweden | OvS

Structural Engineer

Silman

Geotechnical Engineer

Geo-Concepts

Architectural Lighting

MCLA

Civil Engineer

Gordon DC



CONTENTS

Introduction

Project Report

Proposed Design

4

5

12

Introduction and Description

Located within the open lawn at the southwest corner of the Ellipse facing Constitution Ave NW, the Second Division Memorial was originally constructed in 1936 to honor those of the Second Army Division who gave their lives in World War I. The memorial was designed by renowned sculptor James Earle Fraser and architect John Russell Pope and consists of a monumental tripartite granite wall with a rectangular opening that frames the central focal element: the flaming sword, an eighteen-foot-high gilded bronze sculpture of a hand grasping a flaming sword designed by Fraser. The hilt of the sword is decorated with the insignia of the Second Division, which features a head of a Native American chief on a star. The memorial is most directly accessed from the path at the corner of 17th Street NW and Constitution Ave NW.

The architectural granite panels feature wreaths carved in relief and engraved V-cut recessed inscriptions filled with gold leaf listing the battles fought by the Second Division. The memorial is elevated on a granite platform three steps above grade. The tripartite wall is further distinguished by a stepped base and molded cornice above.

An addition to the memorial by architects Otto Eggers and Daniel Higgins was completed in 1962. Eggers and Higgins designed two similarly inscribed granite wing walls on either side of the central panel to honor the men of the Second Division who died in World War II and the Korean War.

The memorial is architecturally and historically significant as a commemorative memorial designed by sculptor James Earle Fraser and architect John Russell Pope and is a contributing

structure to the National Mall Historic District, listed in the National Register of Historic Places.

The pink granite walls and platform of the memorial create three distinct zones. The central zone is defined by the monumental tripartite granite panels that frame the sword and commemorate lives lost in World War I. The east and west zones are defined by the granite wing walls that commemorate lives lost in World War II (on the west wall) and the Korean War (on the east wall). The wing walls express a welcoming gesture and are punctuated by end granite pedestals with flagpoles.

In summary, the carefully designed memorial establishes a hierarchy between the central panel framing the sword and the complementary wing walls and flag poles that define the east and west spaces.

Purpose and Need

The Memorial Modification Project seeks to modify the existing memorial design to allow for future inscriptions that honor the courage and sacrifice of the Second Division in military campaigns since the Korean War. Currently, no panels are available for such inscriptions. The intention is to provide panels for the recognition of three known military campaigns with the opportunity to accommodate inscriptions for future campaigns. There is also a need for an expanded platform that can accommodate public ceremonies and encourage visitors to walk up onto the memorial to view the inscriptions. Four design options are proposed that allow for additional inscriptions to be carved at two new plinth stones standing on the platform of the memorial.

Proposed Design

The proposed design option maintains the design integrity of the memorial by emphasizing the three zones. However, the central part of the platform is extended and distinguished by two stone plinths aligned with the point where the wing walls meet the central tripartite panel. This maintains the hierarchy of the memorial composition, provides more surface area for inscriptions, and meets the full purpose and need of the project by extending the platform of the memorial, creating a welcoming space for visitors and an enlarged space to accommodate public ceremonies.

In addition, this design provides an opportunity to ensure the memorial is accessible for all visitors. The proposed path is a curvilinear design that maintains the language of other curvilinear paths in the surrounding area. The path will be constructed using the same materiality found on existing walkways adjacent to the memorial site.

The selected design scheme would affect the existing planting beds in front of the memorial. The 1975 NPS Landscape Development Plan for the memorial calls for floral displays to be placed around the base of the monument, which may be recreated following the memorial modification.

Project Report

Description of Agency/Mission: The NPS is the applicant submitting the proposed project on behalf of the Second Indianhead Division Association Memorial Foundation. The Association is a non-profit 501 (c)(3) organization.

Description of Project Area: The Project Area surrounds the Second Infantry Division Memorial, located within the open lawn at the southwest corner of the Ellipse facing Constitution Ave NW. The area extends from the landscaping behind the memorial to the sidewalk along Constitution Ave NW, representing the maximum extent of area potentially effected by the modification project and accessible path options.

Schedule: Completion Fall 2021

Project Construction Cost Estimate:
\$1,100,000

Public Engagement: Public outreach occurred through the NEPA and Section 106 processes, as well as opportunities to raise issues or concerns at NCPC or the U.S. Commission of Fine Arts. Coordination with the local community, including the relevant ANC and District agencies, occurred through the Section 106 consultation process.

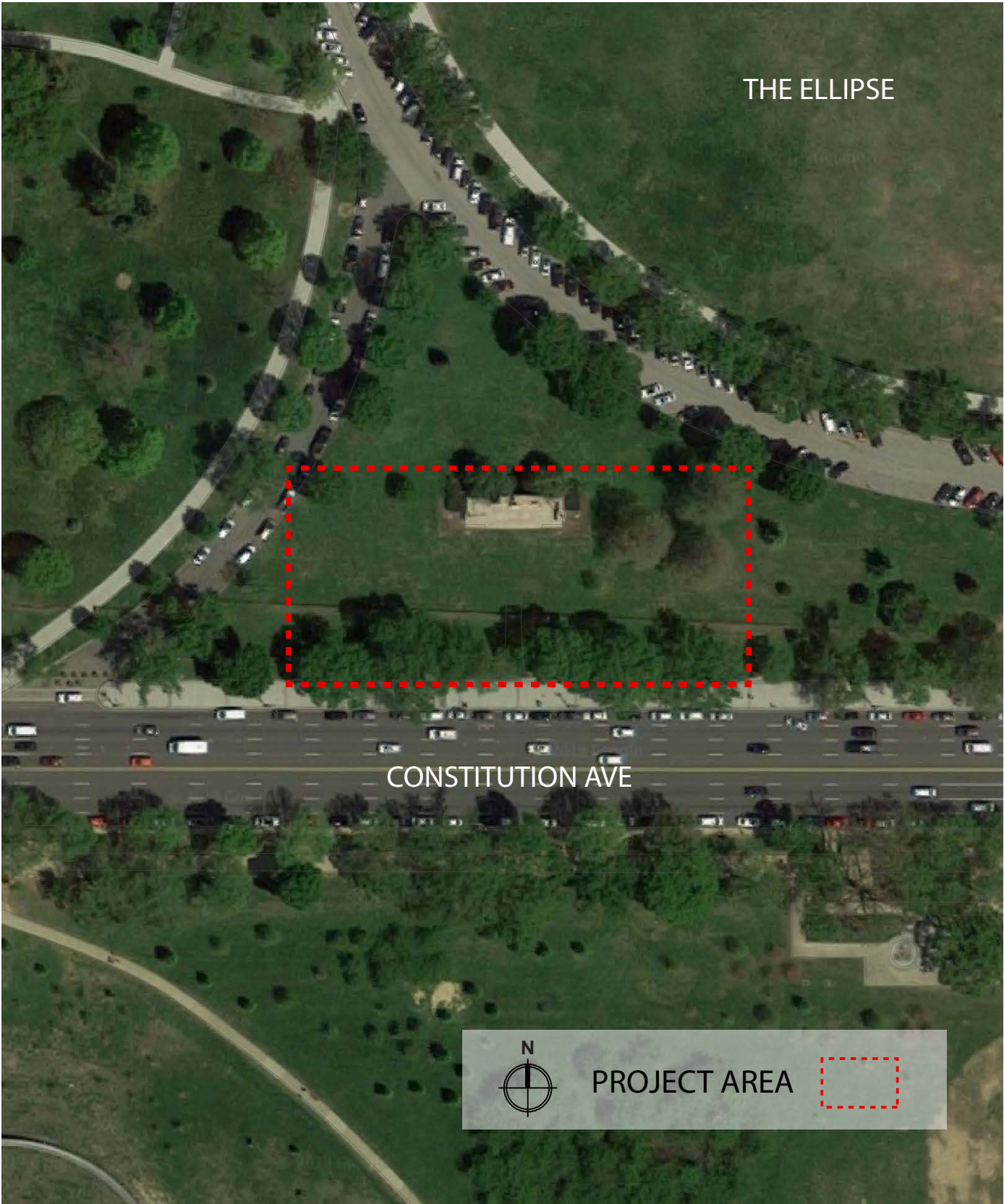
Coordination with Federal, State, and Local Jurisdictions: The concept of the project was approved by CFA and NCPC, and it undertook a Section 106 consultation.

Historic Preservation and Natural Resources: The NPS will adhere to the National Environmental Policy Act (NEPA) and Section 106 of the National Historic Preservation Act (Section 106). The NPS is currently developing design concepts and is determining the appropriate level of NEPA compliance. The project will likely fall under a categorical exclusion for NEPA. Both the NEPA and Section 106 planning processes are anticipated to be completed by spring 2020. The NPS initiated consultation with the DC SHPO on August 28, 2019. The NPS will hold a Section 106 consulting parties meeting on October 15, 2019. The Second Division Memorial is listed as a contributing object in the National Mall Historic District nomination.

Flooding: The proposed project will not address the Second Division Memorial's resiliency to flood impacts. The modification is to the existing memorial.

Stormwater Management: According on the 2020 DOEE Stormwater Management Guidebook, a major land-disturbing activity triggers stormwater management. A major land-disturbing activity is one that disturbs 5,000 square feet or greater of land area and either or both: a) Any portion of the pre-project land cover is natural; and or b) 2,500sf or greater of the post-project land cover is impervious or BMP area.

There is no pre-project natural land cover on this Second Infantry Division Memorial project and the anticipated additional post-project impervious area will be less than 2,500 square feet, therefore the project will not trigger stormwater management requirements.



EXISTING CONDITIONS





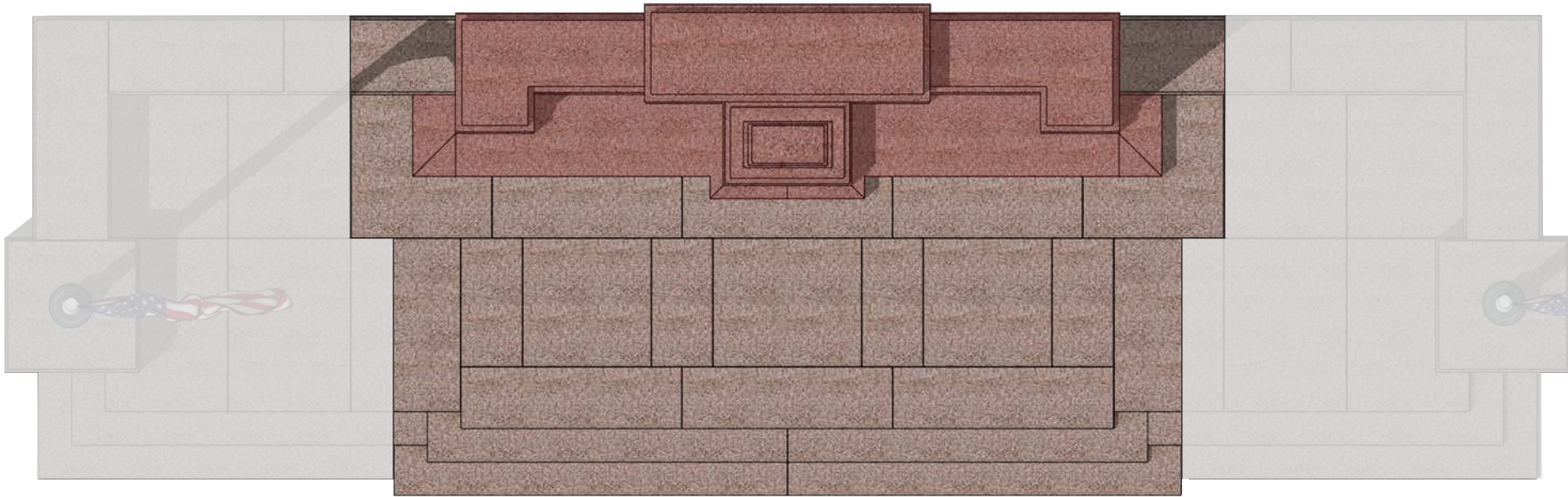
Photo of current topographic conditions at the memorial. Land is fairly flat and would not require extensive landscape grading to accomplish an access route.

MEMORIAL CHRONOLOGY - ORIGINAL ELEVATION AND PLAN

ORIGINAL MEMORIAL, 1936



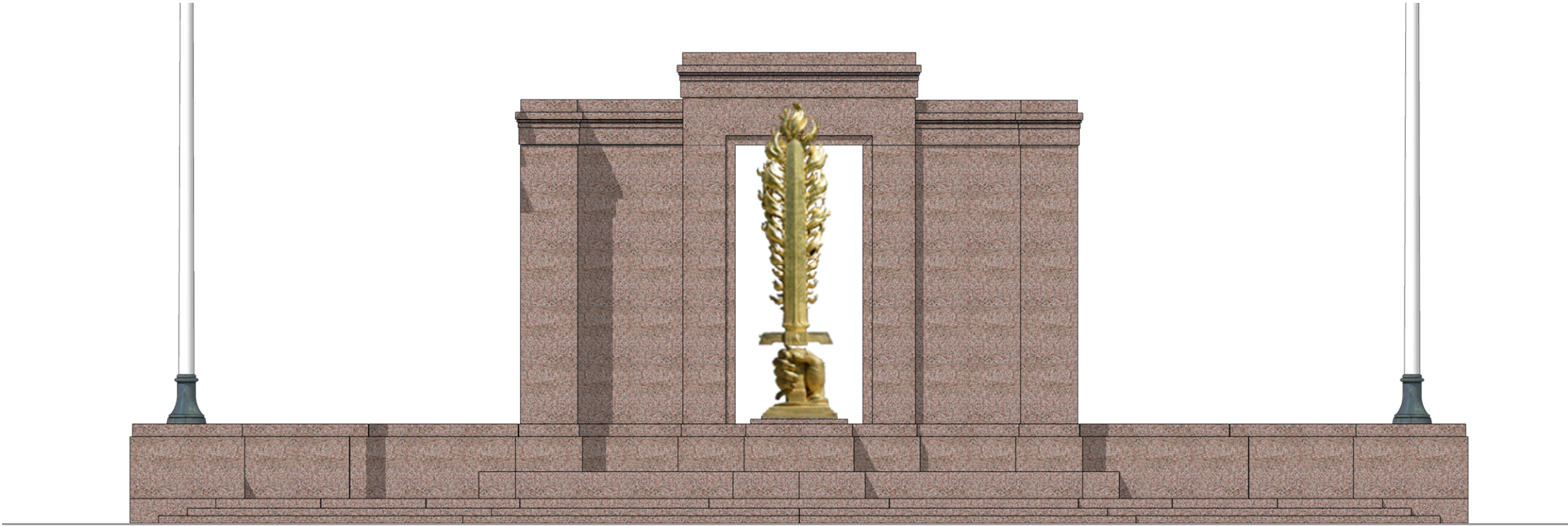
SOUTH ELEVATION - NTS



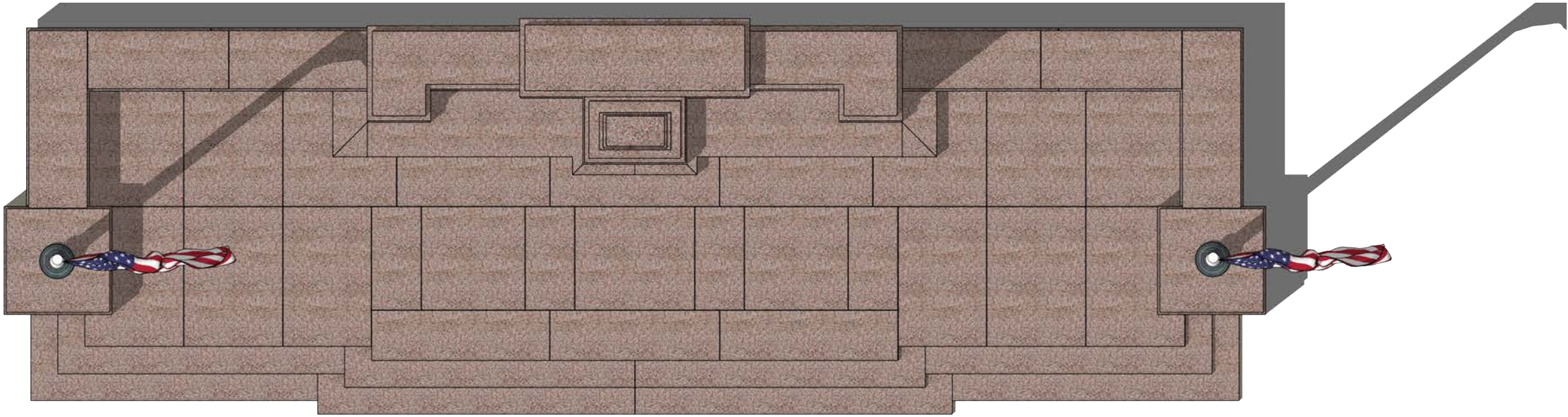
PLAN VIEW - NTS

MEMORIAL CHRONOLOGY - ADDITION TO ELEVATION AND PLAN

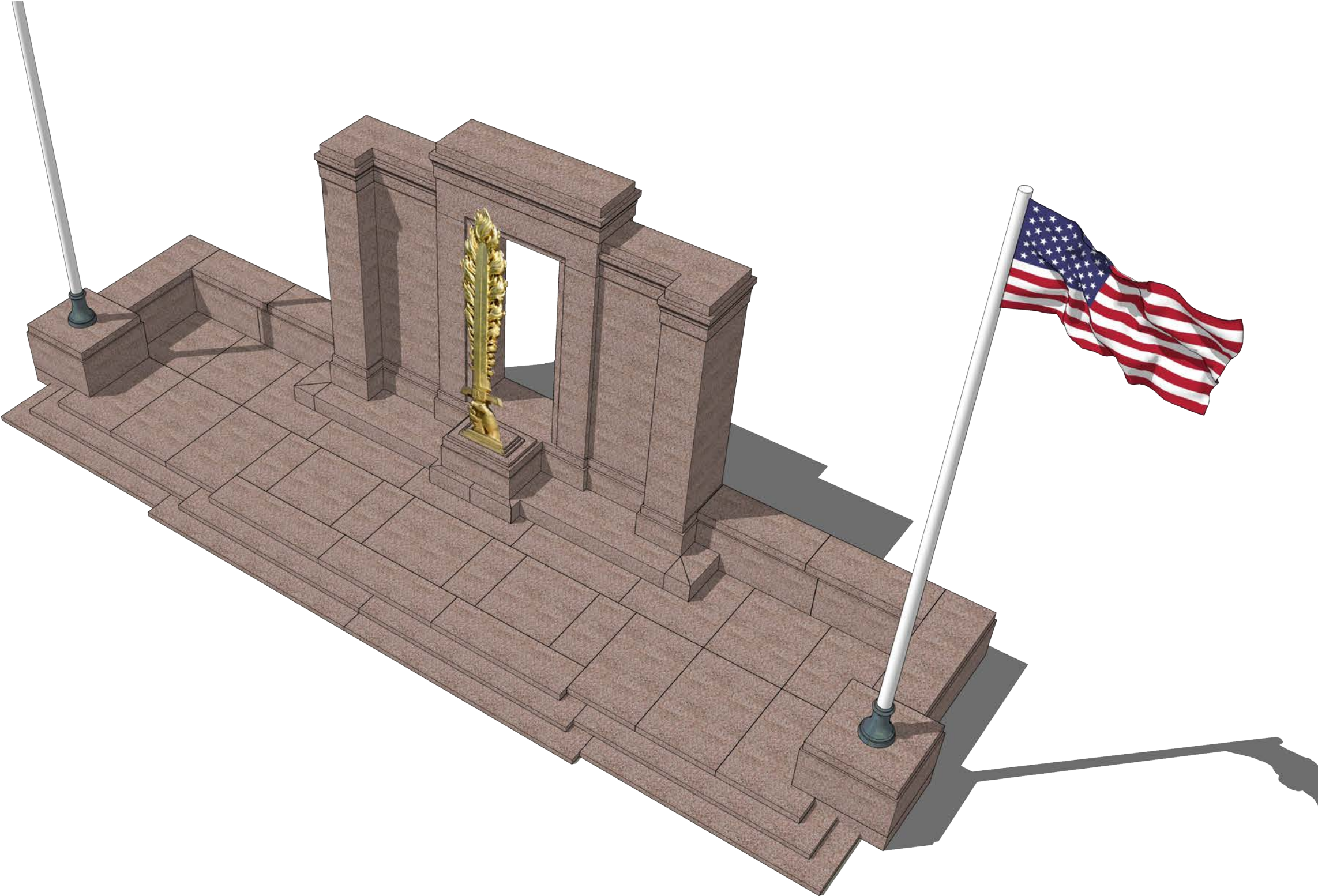
MEMORIAL ADDITION, 1962



SOUTH ELEVATION - NTS

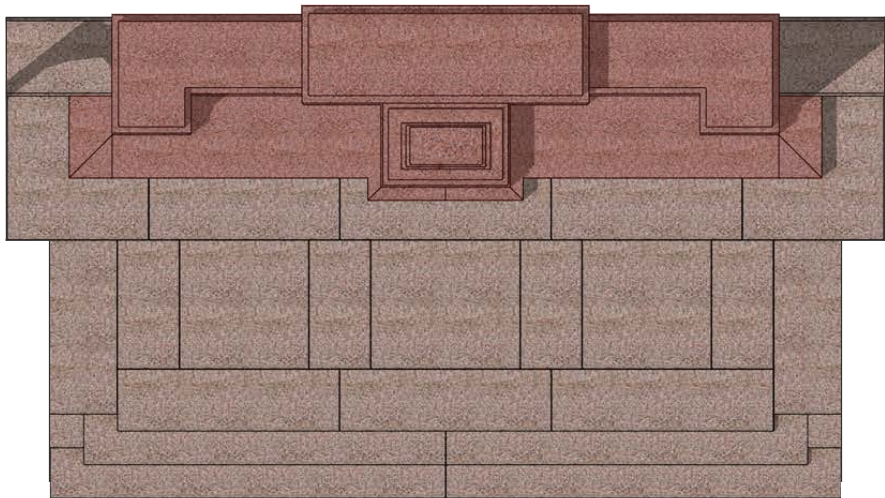


PLAN VIEW - NTS

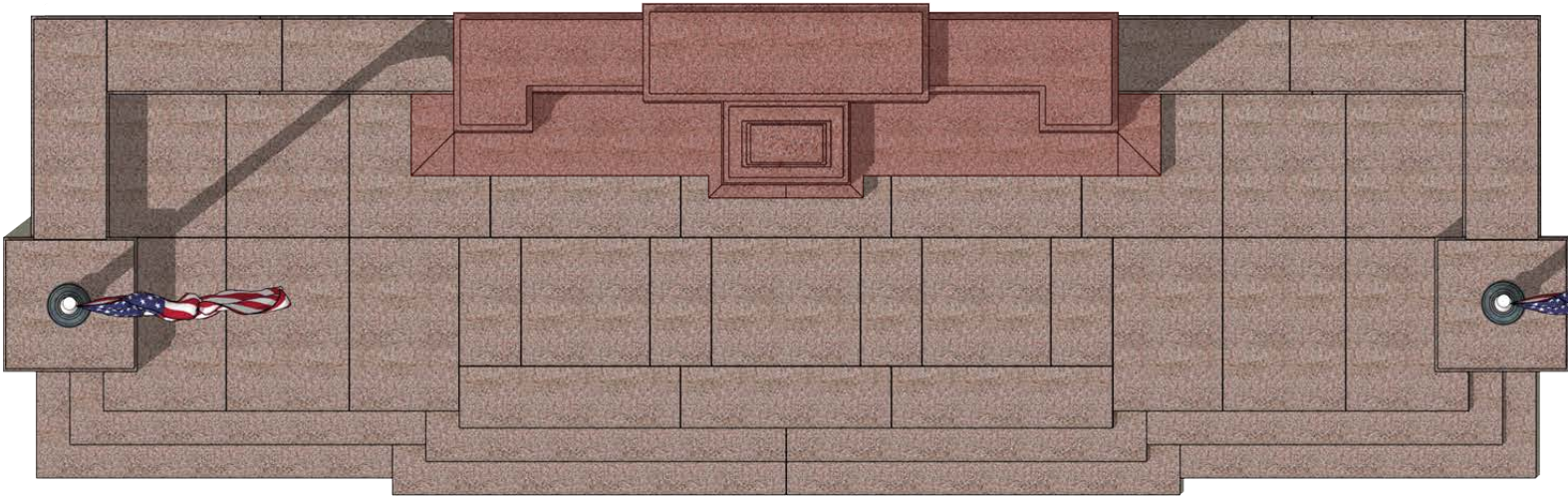


PROPOSED DESIGN

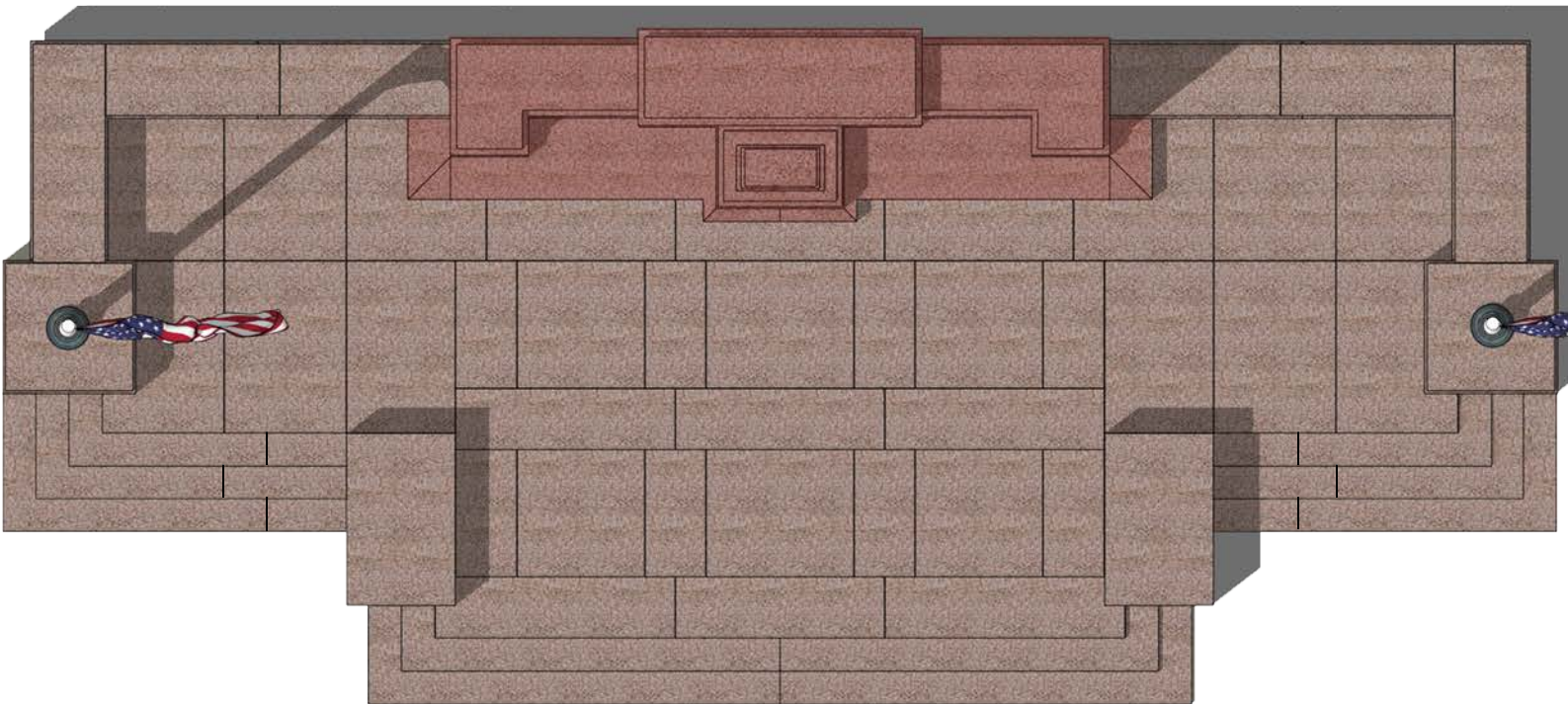
PROPOSED DESIGN - EXPANSION CHRONOLOGY



ORIGINAL MEMORIAL

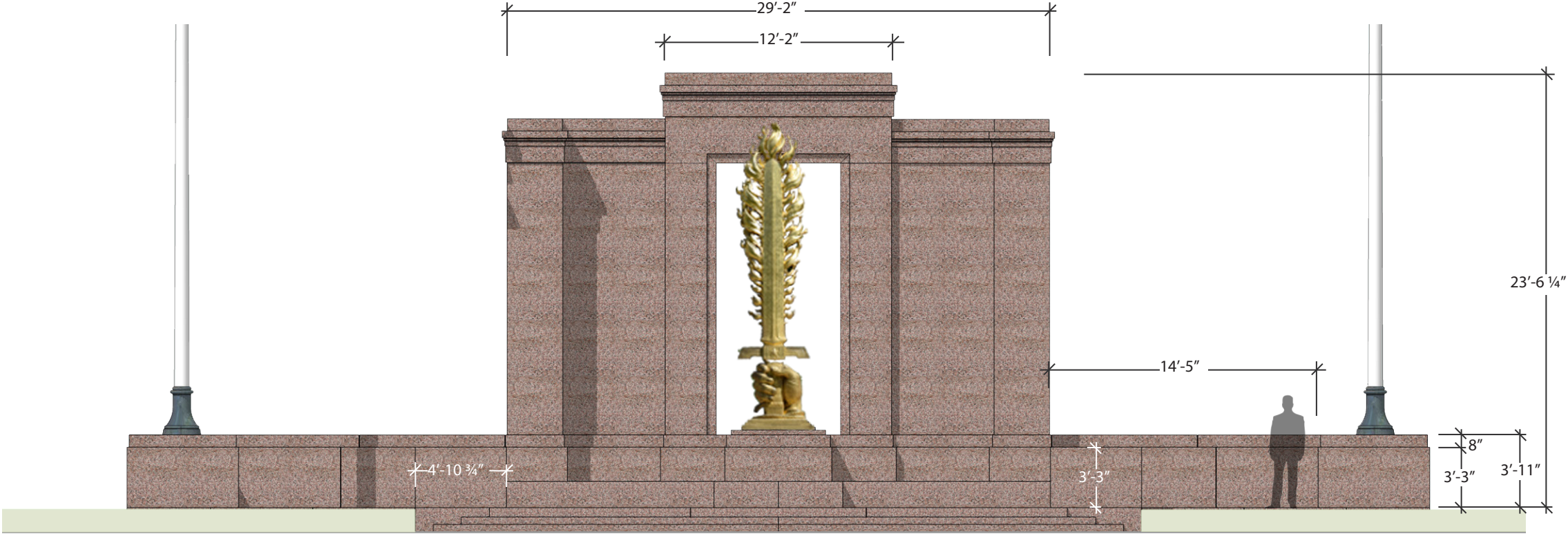


CURRENT MEMORIAL ADDITION

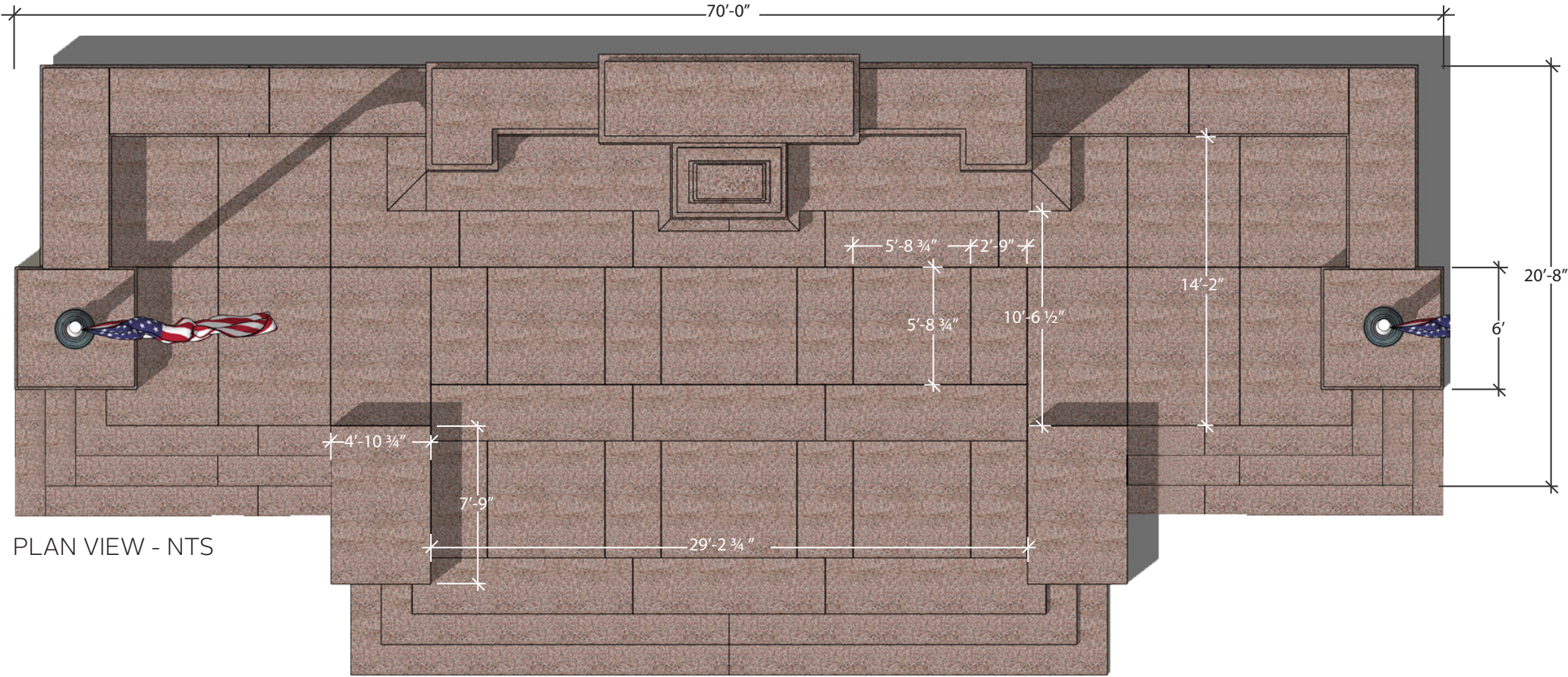


PROPOSED EXPANSION

PROPOSED DESIGN - ELEVATION AND PLAN

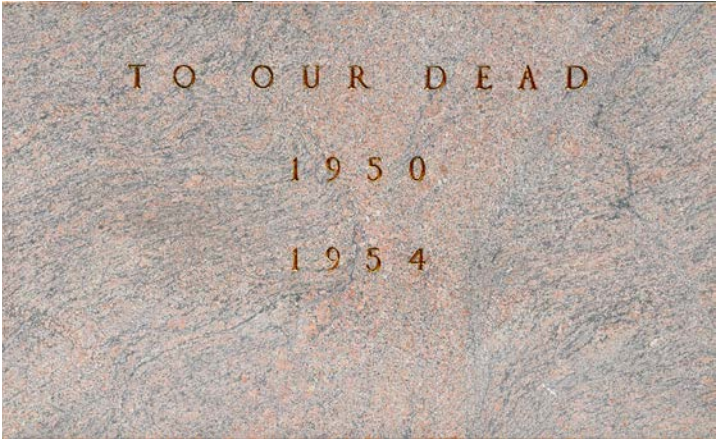


SOUTH ELEVATION - NTS



PLAN VIEW - NTS

PROPOSED DESIGN - PLINTH ELEVATIONS CONCEPT

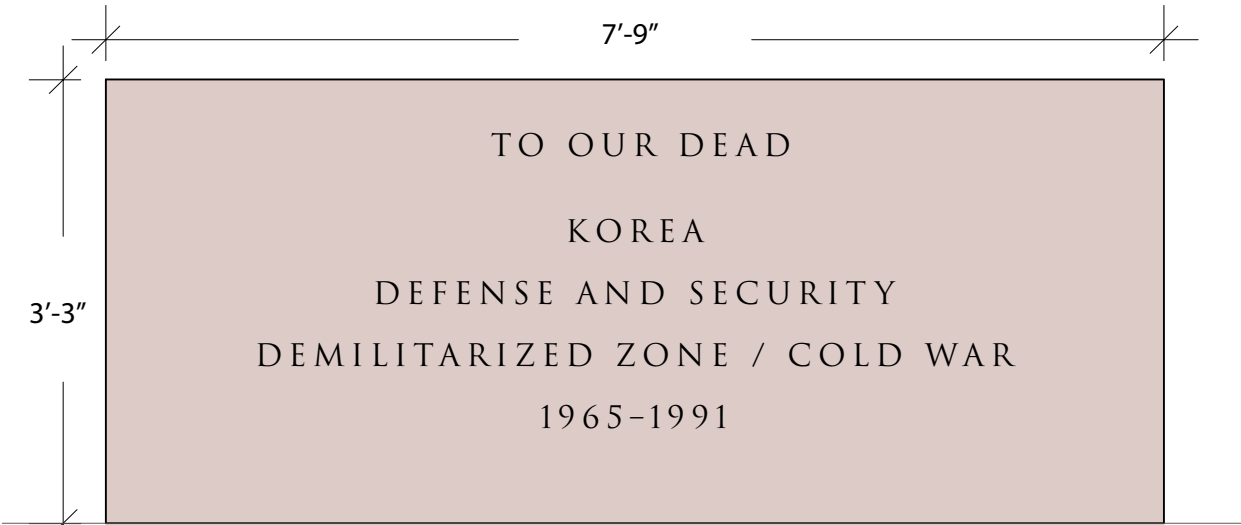
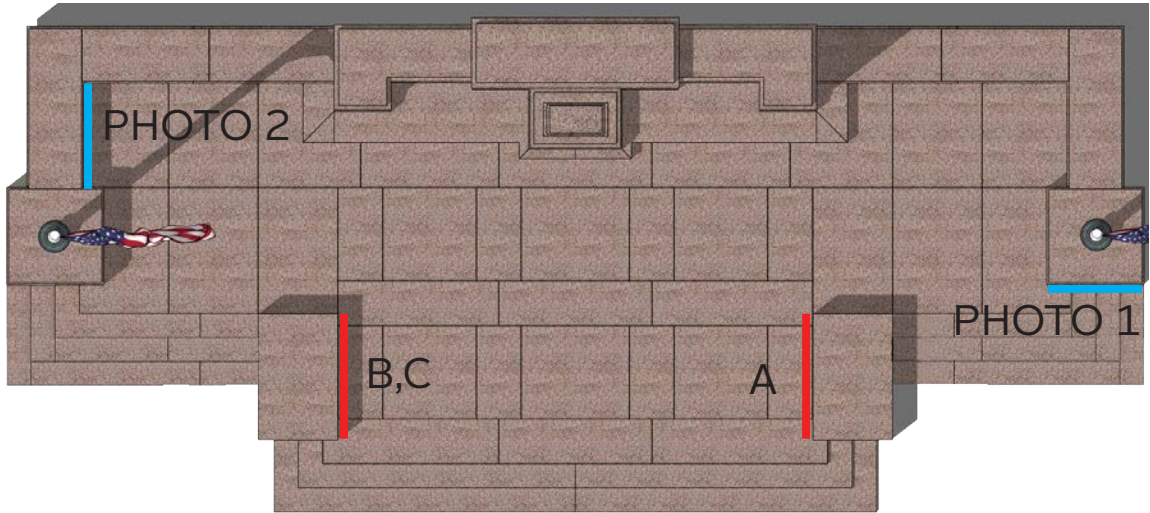


EXISTING INSCRIPTION PHOTO 1

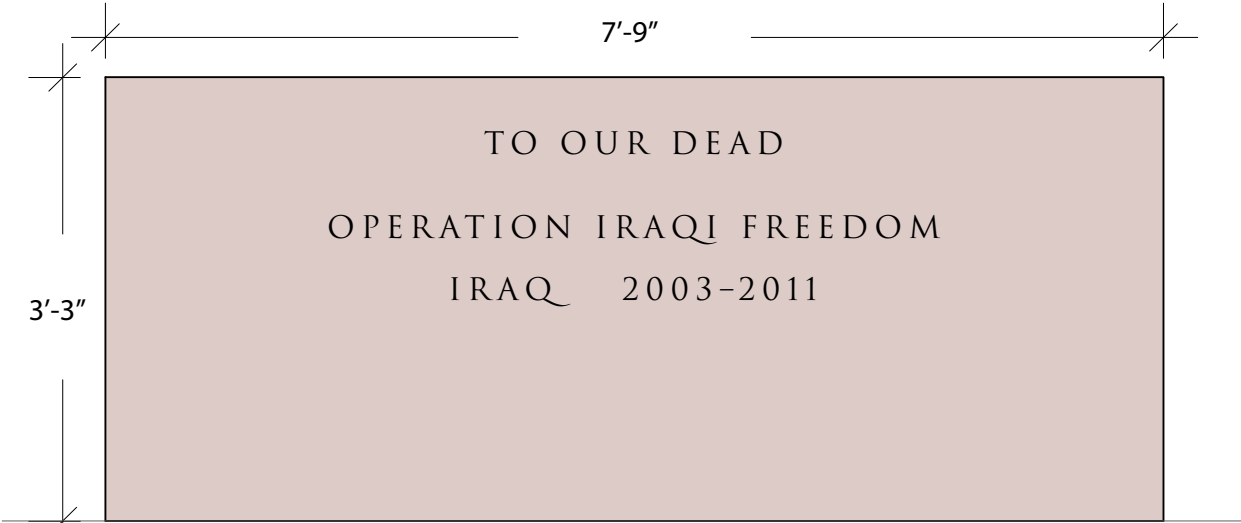


EXISTING INSCRIPTION PHOTO 2

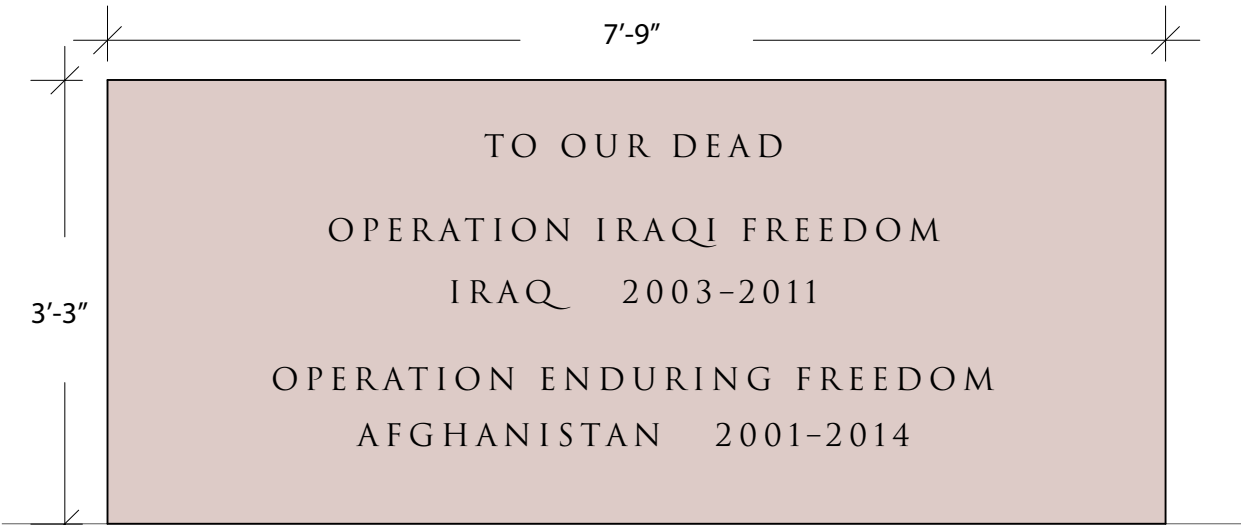
All proposed inscriptions to match the font, size, and spacing depicted in Photo 2.



A - EAST PLINTH WEST FACE PROPOSED INSCRIPTION 2021

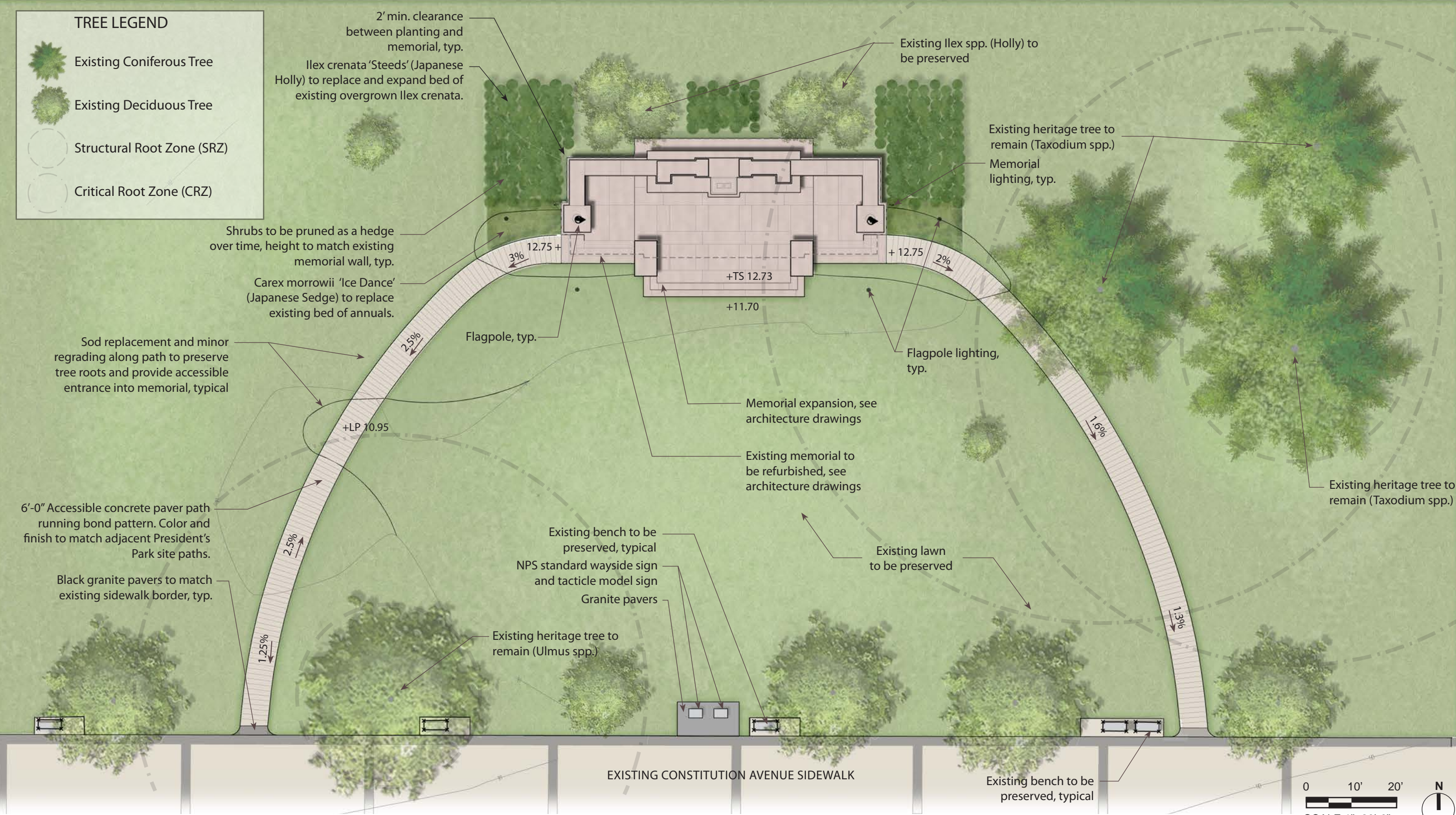


B - WEST PLINTH EAST FACE PROPOSED INSCRIPTION 2021



C - WEST PLINTH EAST FACE PROPOSED INSCRIPTION 2024

PROPOSED DESIGN - SITE PLAN



PROPOSED DESIGN - ACCESSIBILITY CONCEPTS

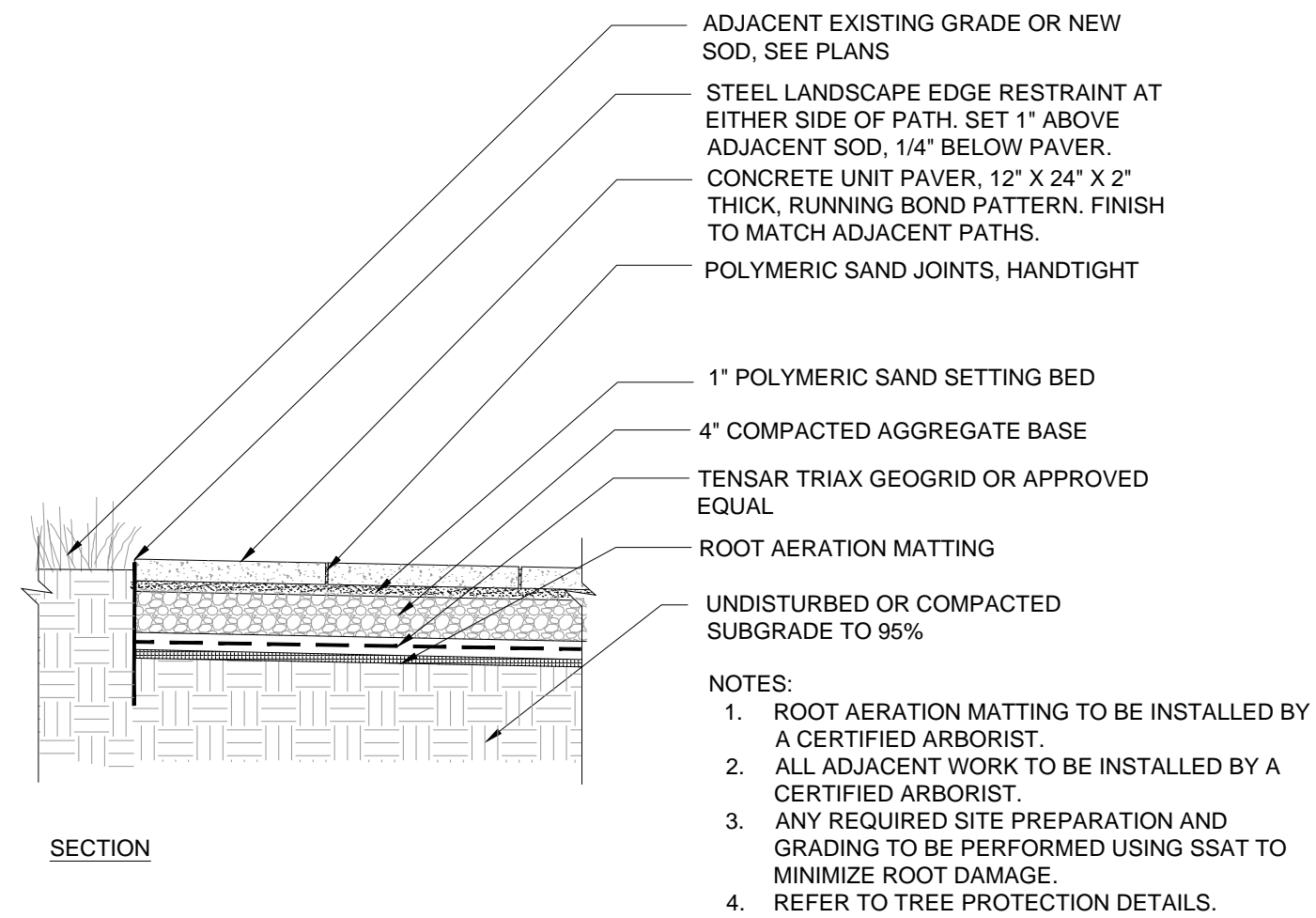


EXISTING SIDEWALK ADJACENT TO MEMORIAL SITE

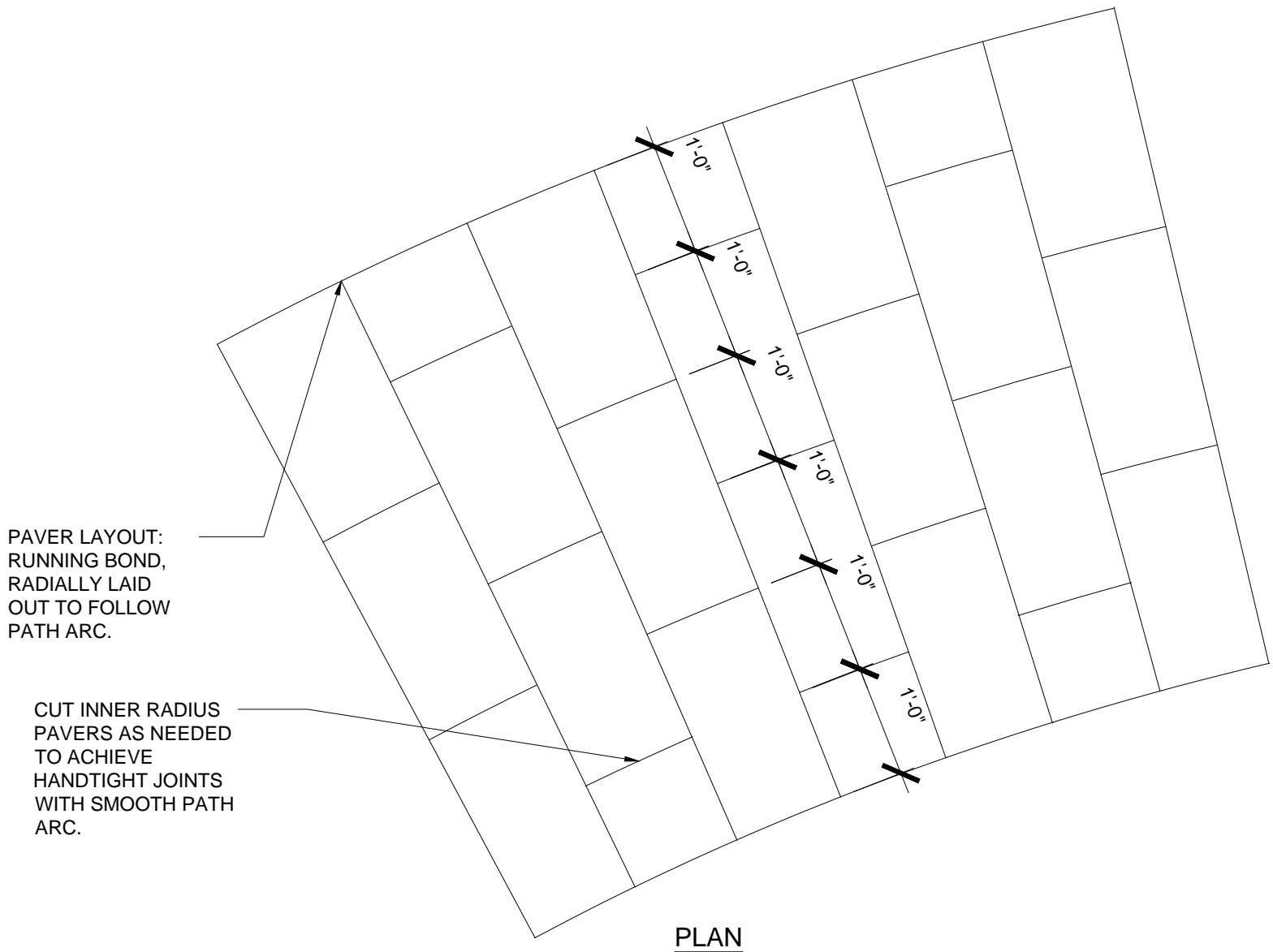


ADJACENT CURVILINEAR PATH

PROPOSED DESIGN - ACCESSIBLE PATH



SECTION



PLAN

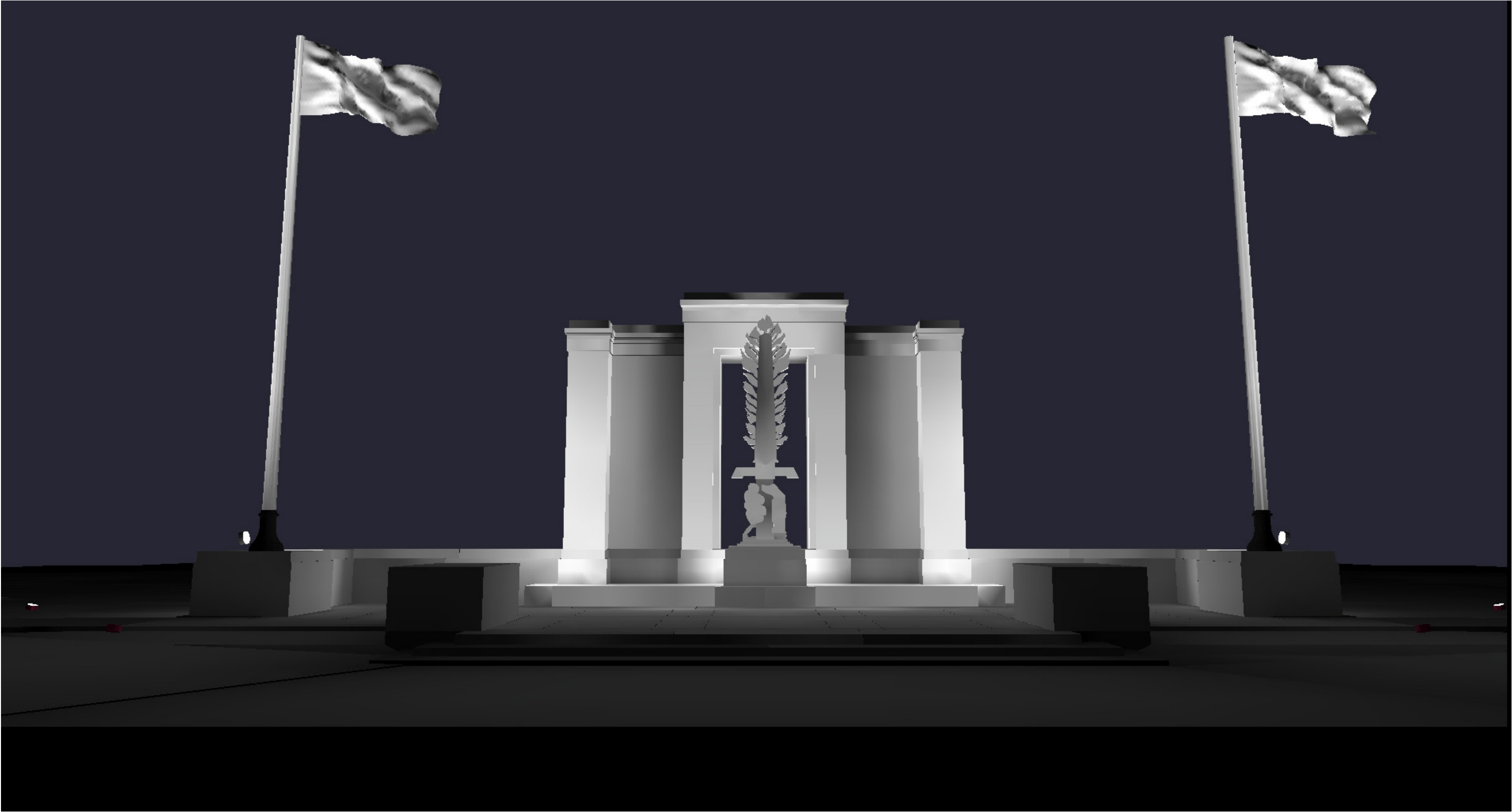
PATH PAVING - SECTION AND PLAN - NTS



FLAG POLE LIGHT FIXTURE



MEMORIAL LIGHT FIXTURE







SECOND INFANTRY DIVISION MEMORIAL, WASHINGTON, DC

**BEYER
BLINDER
BELLE**