

# VIRTUAL CIRCLE

at FL Ave NY Ave NE Intersection | Washington DC

CFA Concept Review - Update

11/19/2020

**swa/Balsley**

Lead Designer/ Landscape Architects

**PARKER RODRIGUEZ, INC.**  
Planning | Urban Design | Landscape Architecture

**JEAN EFRON**  
ART CONSULTANTS LLC

**CM KLING + ASSOCIATES INC**  
Architectural Lighting Design





# Project Goals



- Enhance safety and comfort for visitors, residents, and daily users
- Create a visually compelling sense of arrival into the heart of Washington DC
- Enhance public space experience as active, healthy and vibrant
- Foster a strong sense of community
- Enlist place-making and/or public art

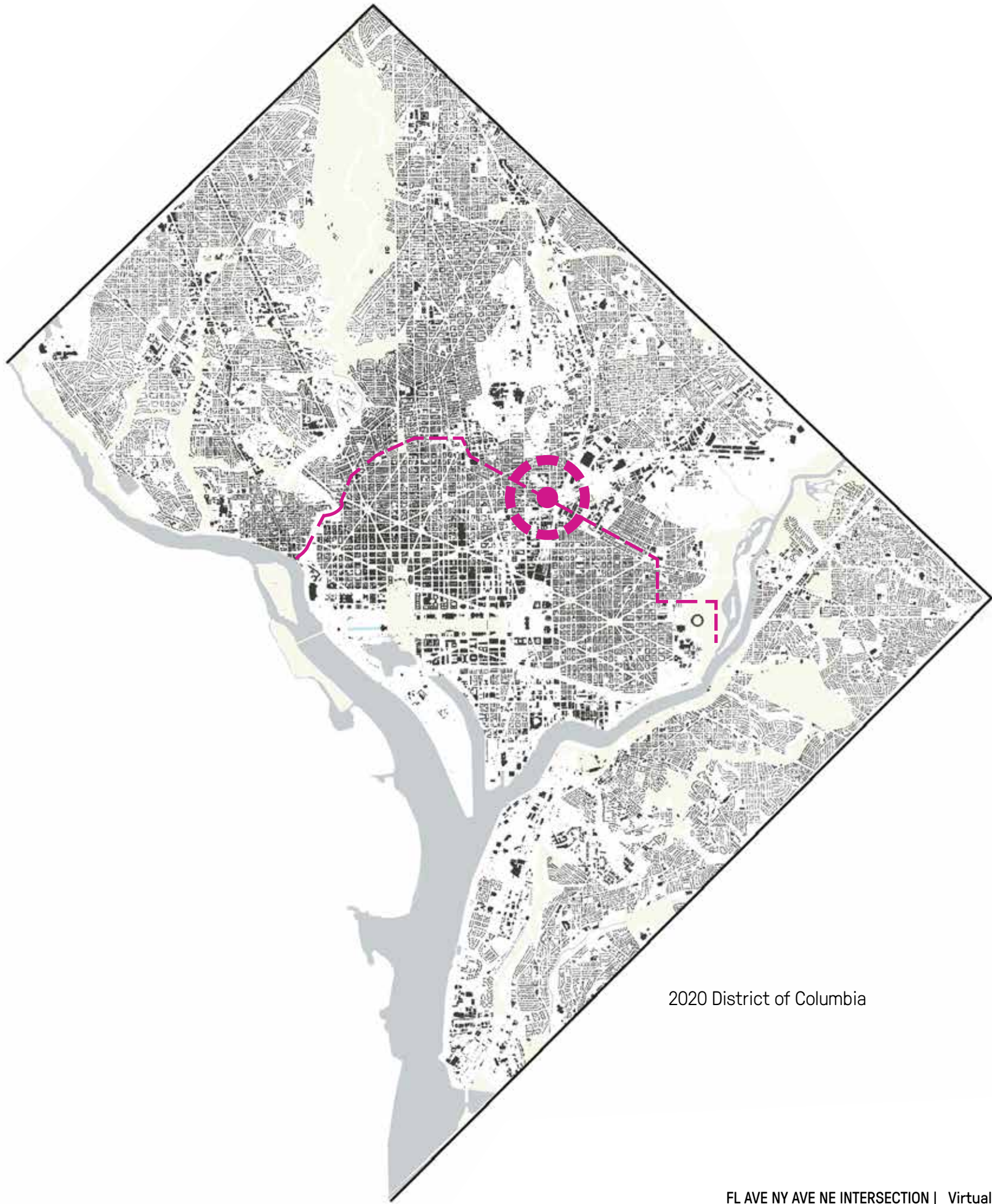


# From Edge to Center

Located on the historic edge of the L'Enfant City Plan



1791 L'Enfant City Plan



2020 District of Columbia



# Existing Parks + Institutions

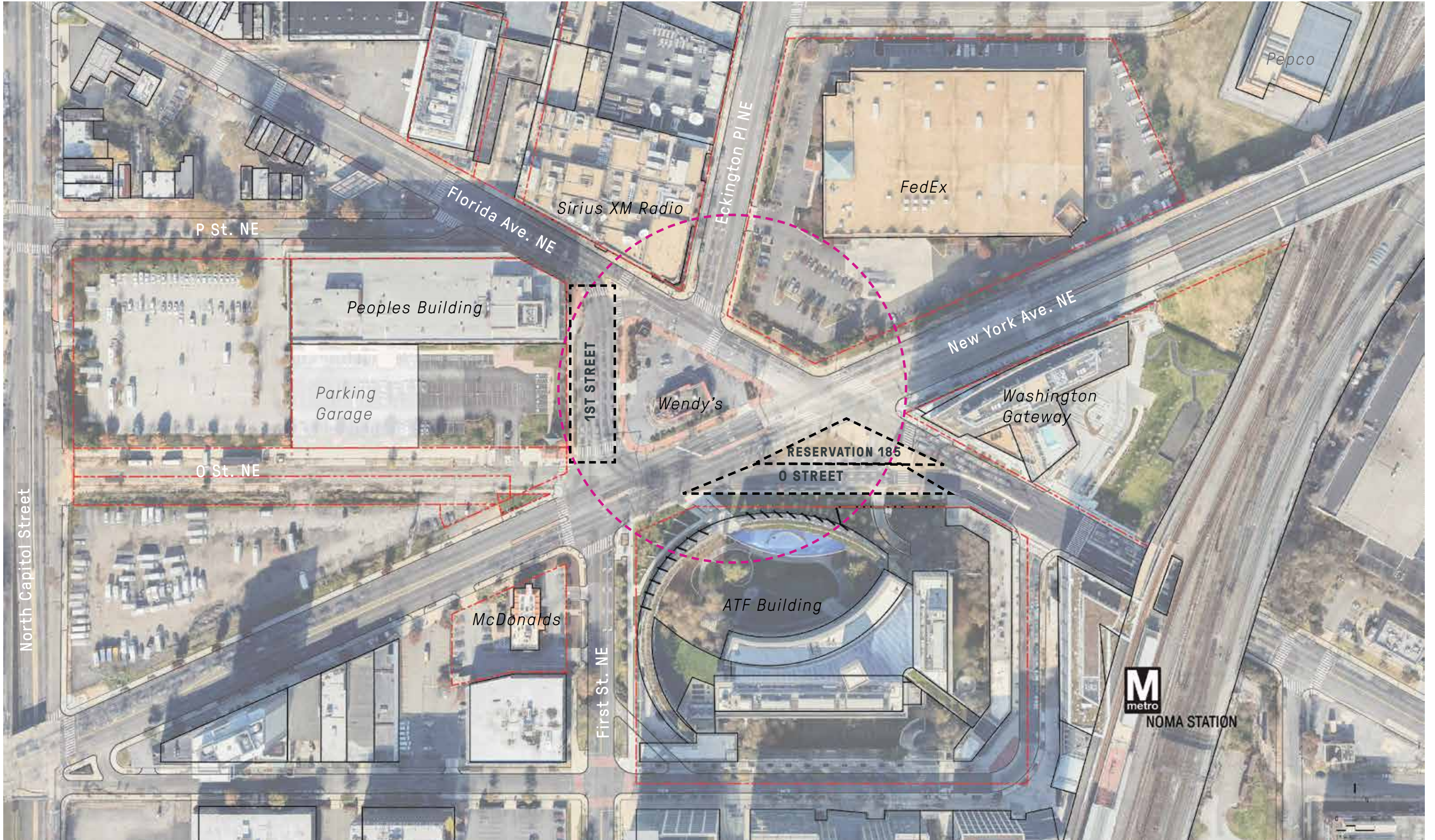
A needed neighborhood park



- LEGEND
- SCHOOLS AND SEMI-PRIVATE REC CENTERS
- 1 GALLAUDET UNIVERSITY FOR THE DEAF  
Sports fields, passive recreation, open space
  - 2 KENDALL ELEMENTARY SCHOOL  
Sport court, playground
  - 3 J.O. WILSON ELEMENTARY SCHOOL  
Field & running track, sport court, playground
  - 4 LUDLOW-TAYLOR ELEMENTARY SCHOOL  
Field, Sport court, Playground
  - 5 MCKINLEY TECHNOLOGY HIGH SCHOOL  
Sports field & running track
  - 6 HARRY THOMAS RECREATION CENTER  
Pool, Sports field, Playground, Sport courts
  - 7 DUNBAR HIGH SCHOOL  
Pool, Sports field, running track
  - 8 WALKER-JONES EDUCATIONAL CAMPUS  
Sports field, sport court, playground
  - 9 GONZAGA COLLEGE HIGH SCHOOL  
Sports field, running track, plaza
  - 10 KIPP DC SHAW CHARTER SCHOOL  
Playground
  - 11 KENNEDY RECREATION CENTER  
Playground, Sports field, sports court
- PUBLIC PARKS
- A BRENTWOOD HAMILTON PARK  
Sports fields, sport court, passive recreation, open space
  - B WHEATLEY RECREATION CENTER  
Sport court, playground, passive recreation, open space
  - C SWAMPOODLE  
Dog park, playground, passive recreation, plaza seating space
  - D ALETHIA TANNER PARK  
Open green space, trail access, playground, stage/cafe kiosk & seating area, dog park, plaza
  - E NEW YORK AVE PLAYGROUND  
Open green space, playground, sport courts, field
  - F BUNDY DOG PARK  
dog park, sports field
  - G SEATON PARK  
Passive walkways
  - H FLORIDA AVE PLAYGROUND  
Sports court, playground
- NOMA MASTERPLAN FUTURE PUBLIC LANDSCAPES
- I L STREET PLAZA  
Future development future plaza
  - J NOMA MEANDER  
Future development for open space



## Existing Site





Existing Views



View across New York intersection toward Wendy's Building



Key Plan



View South at intersection on NY Ave.



Sirius XM Building



View South of ATF and Clock Tower

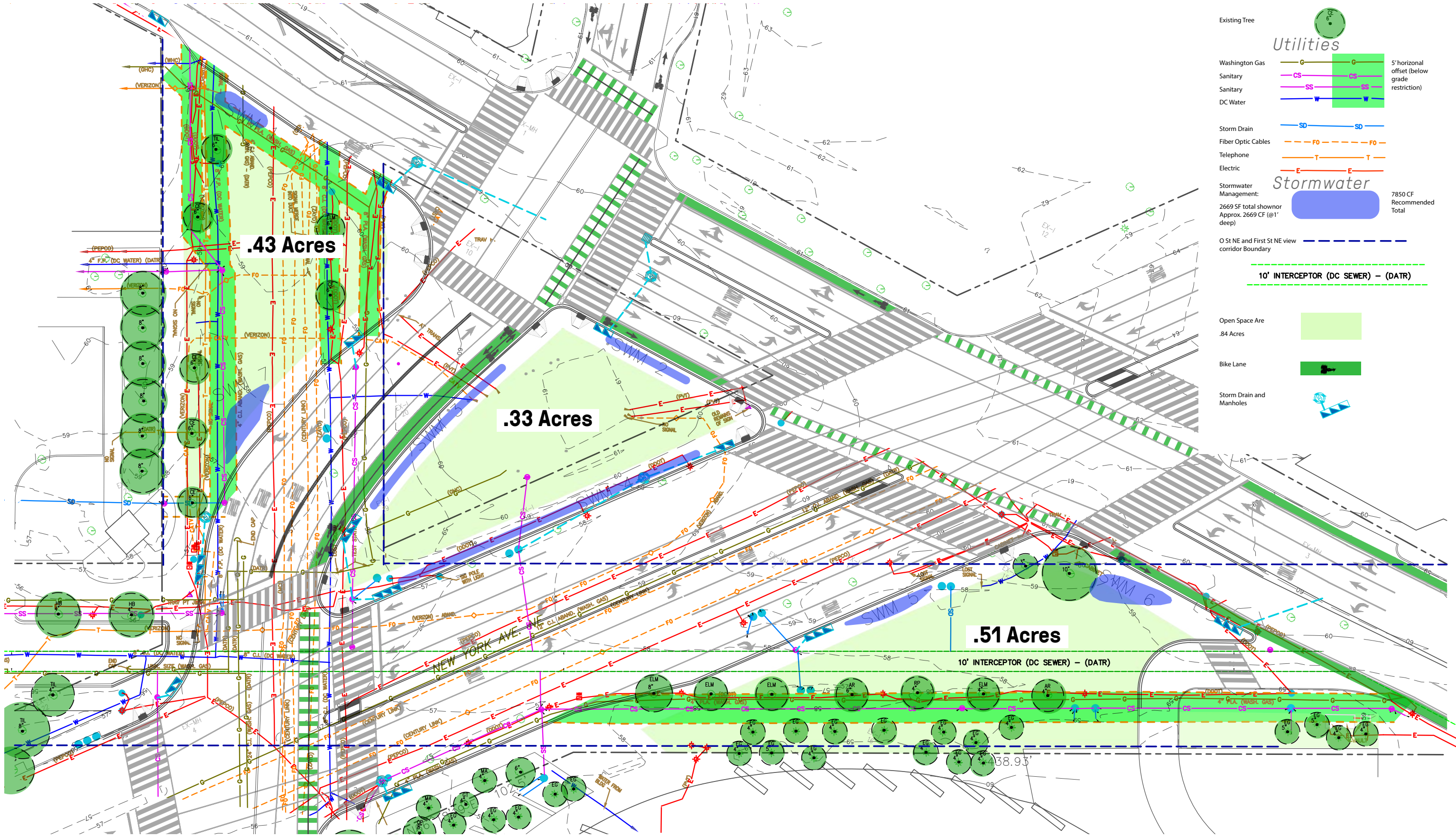


Commuter walking East by Washington Gateway toward metro



# DDOT Intersection Design + Site Constraints

## Utilities and stormwater



# Summary of CFA, NCPC, and SHPO Comments

## CFA

- Recommends a stronger spatial unity of the sites.
- Concern regarding the repetition of the circular shape in the plan of the three triangular parcels.
- Recommend defining the park with a unifying formal idea derived from the geometry of the surrounding context of streets and buildings.
- Create a strong identity of the park with an architecture of trees and the manipulation of the groundplane.
- Encouraged study of successful public spaces of comparable scale as precedents.
- Recommends to reduce the amount of paving and increase the amount of paving.
- Recommends focusing on program of relaxation, play, and encounters with neighbors.
- Recommend differentiated visual and material for crosswalks and possibly for First Street.
- Recommend designing for a closer relationship to the buildings in parcel 1 and 3.
- Recommend no active program in parcel 2, and that it be more flexible.
- Recommend not spending resources on a sculpture in parcel 2.
- Commend the design of the linear benches and berms.
- Recommend utilizing the benches to unify the park.

## NCPC *(approved concept)*

- Concept Plan was approved with comments as follows:
- Requests the coordination continue with GSA to avoid adverse impacts to the ATF Building.
- The intersection was identified as Prime Site #14 in the Memorials and Museums Master Plan. The memorial is not included in the proposal, as it is not included in the scope, but it does not preclude the District from incorporating commemorative elements in the future.
- Recommends that the design team see if additional street trees can be provided on the south side of New York Avenue to help reinforce the edge of the street as an important L'Enfant corridor.
- Recommends to evaluate if street trees, or paving or other measures could be used to reinforce the original 1st Street Corridor viewshed.
- Recommends reducing or eliminating the vertical sculpture screens.
- Recommends increasing tree canopy and planting areas and reducing the amount of paving.

## SHPO

- Liked the expression of street trees along original 1st Street and O Street edges.
- Maintain a View Corridor as much as possible, but they do not expect it to be fully open. Recommendations such as removing the Kiosk in the view corridor, and possibly lowering the berms a little.
- Incorporate a suggestion of the shape and form of Reservation 185 - this could be a flush granite curb, or similar, to reinforce the 'edge of the city'.



PREVIOUS Illustrative Concept Plan





# REVISED Illustrative Concept Plan



- Key Modifications
- 1. Increased Overall Green Area by 45%
  - 2. Simplified Paving - One Color, Aligned with Florida Ave, Jointing aligned with New York Ave.
  - 3. Simplified Parcel 1 by removing circle of paving and Kiosk and expanding triangle of planting
  - 4. Simplified Parcel 2 and added Berm on Florida
  - 5. Simplified Parcel 3 Design and Circulation
  - 6. Removed All Screens except on Parcel 3 at Play Area
  - 7. Added flush curb inlay to highlight 1st Street and Reservation 185



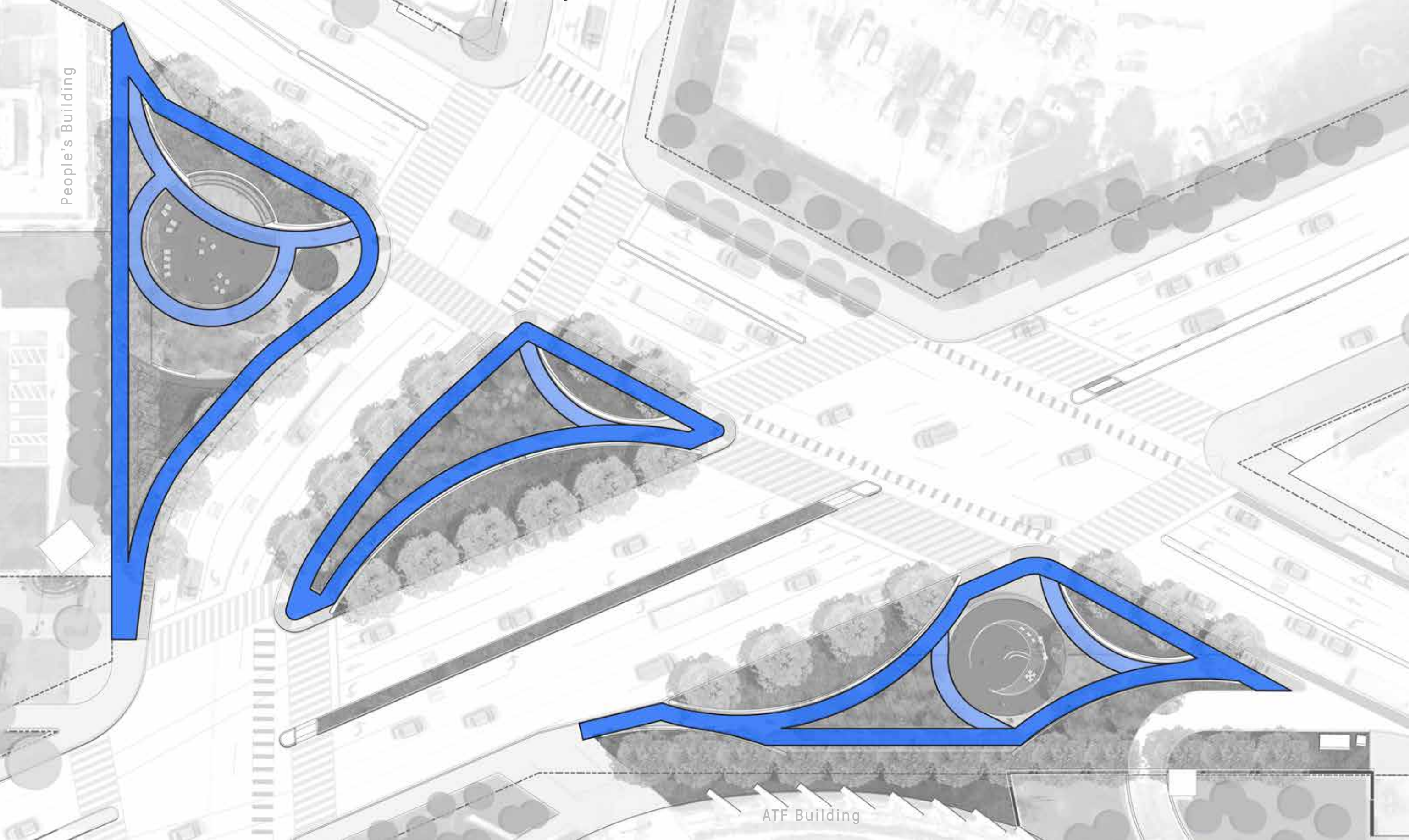
# REVISED Illustrative Concept Plan



- Key Modifications
1. Increased Overall Green Area by 45%
  2. Simplified Paving - One Color, Aligned with Florida Ave, Jointing aligned with New York Ave.
  3. Simplified Parcel 1 by removing circle of paving and Kiosk and expanding triangle of planting
  4. Simplified Parcel 2 and added Berm on Florida
  5. Simplified Parcel 3 Design and Circulation
  6. Removed All Screens except on Parcel 3 at Play Area
  7. Added flush curb inlay to highlight 1st Street and Reservation 185



**Pedestrian Circulation - 8' Paths to Match Adjacent City Sidewalks**





# Planting Area at Grade



## Key Modifications

- 1. Increased Overall Green Area by 42%
- 2. Increase Overall % of Green to Paved  
46% Green : 56% Paved  
*Previous: 28% / 72%*
- 3. Percent Increase by Parcel  
Parcel 1: 41%  
Parcel 2: 76%  
Parcel 3: 28%
- 4. Percent of Green to Paved by Parcel  
Parcel 1: 31% / 69%  
*Previous 23% / 77%*  
Parcel 2: 52% / 48%  
*Previous 29% / 71%*  
Parcel 3: 54% / 46%  
*Previous 42% / 58%*

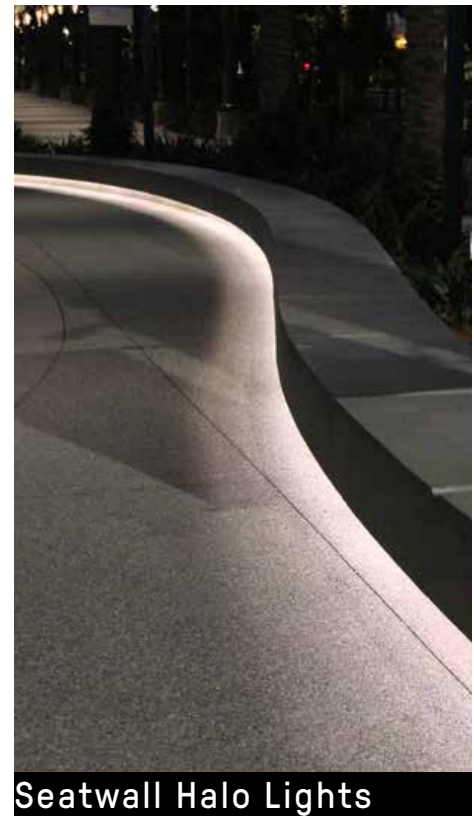


# Tree Canopy Diagram





Precedent Images





Planting



Groundcover



Park Tree - Loose Open Shade



Street Tree



Garden Planting, Shade



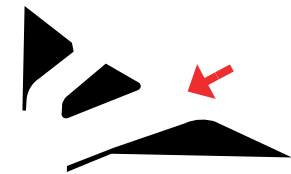
Garden Planting, Sun









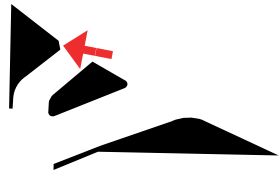








Parcel 1 Views



Before



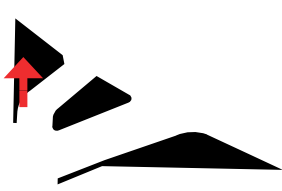
Current



Previous



Parcel 1 Views



Previous



Current

**SWa/Balsley**



Previous



Current



Parcel 2 Views



Before



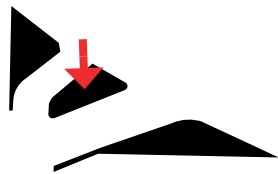
Current



Previous



Parcel 2 Views

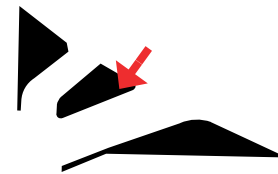


Previous



Current

SWA/Balsley



Previous



Current



Parcel 3 Views



Before



Current



Previous



Parcel 3 View



Previous



Current







# Urban Triangular Parklet Case Studies | Freeman Plaza, New York



**Size: 1.5 Acres**  
**Hardscape: 52%**  
**Planting: 48%**



## Design Elements and Program

- Temporary but Long Term
- Gravel Paving
- Timber Platforms with Tables and Chairs and Loungers
- Noguchi Play Sculpture
- Synthetic Turf for Events
- Solar WIFI Charging Stations
- Lunchtime Yoga
- Music Events



# Urban Triangular Parklet Case Studies | Campus Martius Park, Detroit



**Size: 1.7 Acres**  
**Hardscape: 76%**  
**Planting: 24%**



- Design Elements and Program**
- Open Lawn
  - Stage
  - Ice Rink
  - Beach
  - Fountain
  - Lots of Programming



# Urban Triangular Parklet Case Studies | Mid Main Park, Vancouver



**Size: 0.4 Acres**  
**Hardscape: 62%**  
**Planting: 38%**



## Design Elements and Program

- Perennial Planting Beds with Trees
- Play Mound
- Seat Wall
- Public Art
- Open Plaza
- Trellis
- Movable Tables and Chairs





**THANK YOU!**  
Virtual Circle | Washington DC

**swa/Balsley**

**PARKER RODRIGUEZ, INC.**  
Planning | Urban Design | Landscape Architecture

**JEAN EFRON**  
ART CONSULTANTS LLC

**CM KLING + ASSOCIATES INC**  
Architectural Lighting Design

