

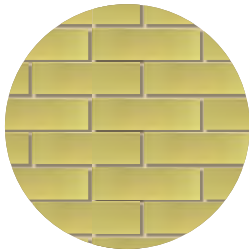


BUILDING ENVELOPE
HIGH PERFORMANCE ENVELOPE CONSTRUCTION
ALUMINUM COMPOSITE PANEL CLADDING
ALUMINUM COMPOSITE PANELS AND COPINGS ARE IMPACT RESISTANT AND LONG LASTING.
TREES
NEW LARGE STREET TREES ALONG YUMA STREET SE
GLAZED BRICK CLADDING
GLAZED BRICK IS USED TO HIGHLIGHT THE ENTRY AREA AND CREATE A PEDESTRIAN SCALE ALONG YUMA STREET SE
GLAZING
HIGH PERFORMANCE STOREFRONT SYSTEM WITH VIRACON VRE-43 GLAZING. GLAZING TO BE ARGON FILLED, INSULATED CLEAR GLASS WITH SINGLE COMPONENT THERMO SPACER.
SECURITY- ENTRY PROCEDURES
ALL VISITORS PASS THROUGH A SECURITY VESTIBULE TO BE GREETED, AND CHECKED IN.
ENTRANCE DOORS
ENTRANCE DOORS TO HAVE DURABLE, INTRUDER RESISTANT HARDWARE.
BRICK CLADDING
BRICK CLADDING IS DURABLE, LONG LASTING, AND REQUIRES LITTLE MAINTENANCE.
TRANSLUCENT GLAZING
TRANSLUCENT GLAZING STOREFRONT SYSTEM AT SOUTHERN FACING WINDOWS IN GYMNASIUM TO REDUCE GLARE.
SECURITY- LIGHTING AND CAMERAS
EXTERIOR LIGHTING AND SECURITY CAMERAS WILL BE PROVIDED AT ALL SITE ACCESS POINTS AND AROUND BUILDING PERIMETER.

MATERIALS USED



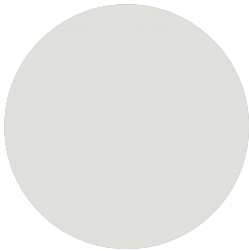
BRICK CLADDING
TAYLOR
ALPINE GREY



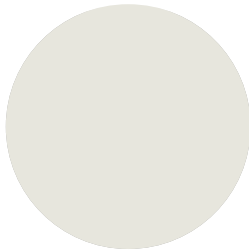
GLAZED BRICK CLADDING
BELDEN BRICK
TRAFFIC YELLOW



GLAZING
KAWNEER
ALUMINUM STOREFRONT SYSTEM
DOVE GRAY



ALUMINUM COMPOSITE METAL
NORTHCLAD
BONE WHITE



RIBBED METAL PANEL
PAC-CLAD
STONE WHITE

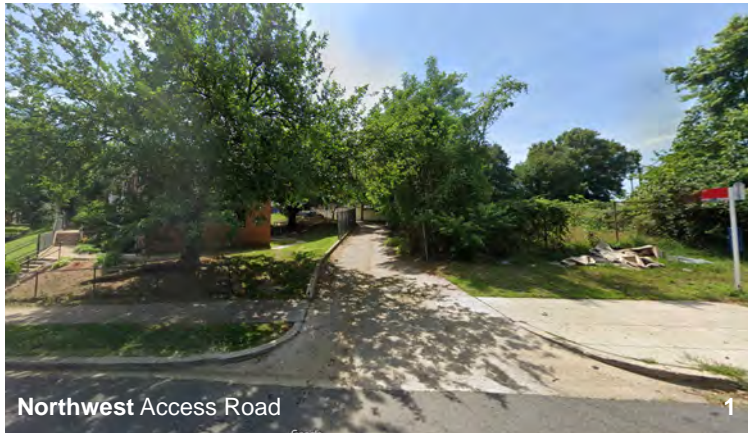
Existing Condition





New Community
Recreation Center Parcel







Existing Condition



Playground Area

Baseball Field

Basketball Court

Community Recreation Center

Partner Space

Parking Lot



Existing Condition



Composite Metal Panels

HPL Panels

Translucent Panels

Flat Lock Panels

Brick Veneer
White to Light Gray
Tones

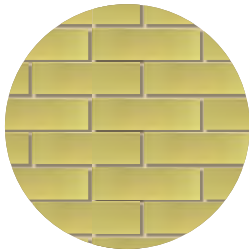


BUILDING ENVELOPE
HIGH PERFORMANCE ENVELOPE CONSTRUCTION
ALUMINUM COMPOSITE PANEL CLADDING
ALUMINUM COMPOSITE PANELS AND COPINGS ARE IMPACT RESISTANT AND LONG LASTING.
TREES
NEW LARGE STREET TREES ALONG YUMA STREET SE
GLAZED BRICK CLADDING
GLAZED BRICK IS USED TO HIGHLIGHT THE ENTRY AREA AND CREATE A PEDESTRIAN SCALE ALONG YUMA STREET SE
GLAZING
HIGH PERFORMANCE STOREFRONT SYSTEM WITH VIRACON VRE-43 GLAZING. GLAZING TO BE ARGON FILLED, INSULATED CLEAR GLASS WITH SINGLE COMPONENT THERMO SPACER.
SECURITY- ENTRY PROCEDURES
ALL VISITORS PASS THROUGH A SECURITY VESTIBULE TO BE GREETED, AND CHECKED IN.
ENTRANCE DOORS
ENTRANCE DOORS TO HAVE DURABLE, INTRUDER RESISTANT HARDWARE.
BRICK CLADDING
BRICK CLADDING IS DURABLE, LONG LASTING, AND REQUIRES LITTLE MAINTENANCE.
TRANSLUCENT GLAZING
TRANSLUCENT GLAZING STOREFRONT SYSTEM AT SOUTHERN FACING WINDOWS IN GYMNASIUM TO REDUCE GLARE.
SECURITY- LIGHTING AND CAMERAS
EXTERIOR LIGHTING AND SECURITY CAMERAS WILL BE PROVIDED AT ALL SITE ACCESS POINTS AND AROUND BUILDING PERIMETER.

MATERIALS USED



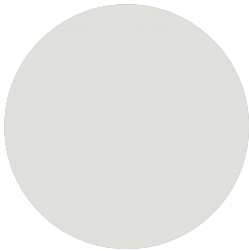
BRICK CLADDING
TAYLOR
ALPINE GREY



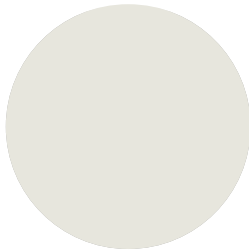
GLAZED BRICK CLADDING
BELDEN BRICK
TRAFFIC YELLOW



GLAZING
KAWNEER
ALUMINUM STOREFRONT SYSTEM
DOVE GRAY



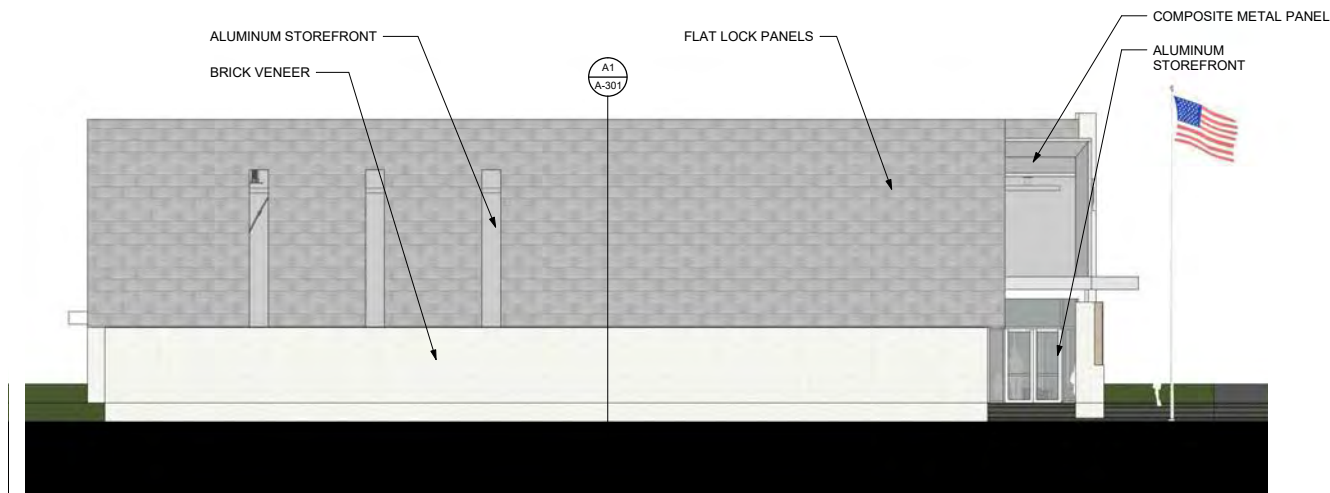
ALUMINUM COMPOSITE METAL
NORTHCLAD
BONE WHITE



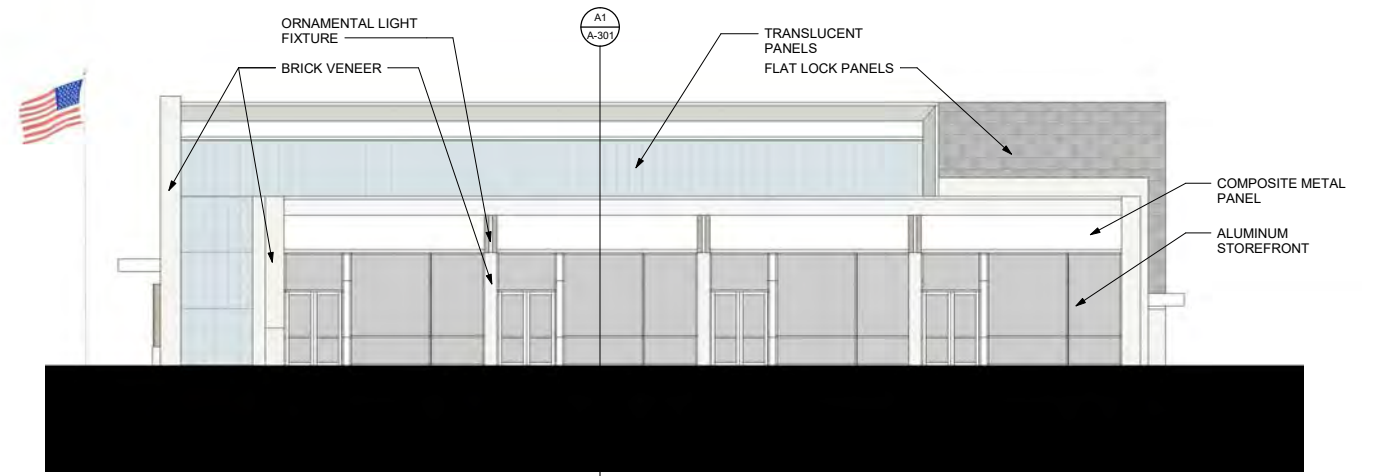
RIBBED METAL PANEL
PAC-CLAD
STONE WHITE

Existing Condition

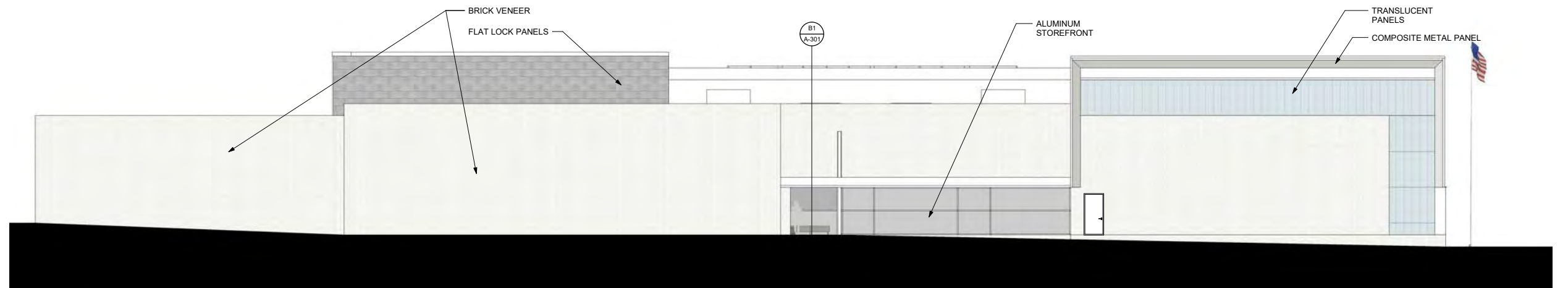




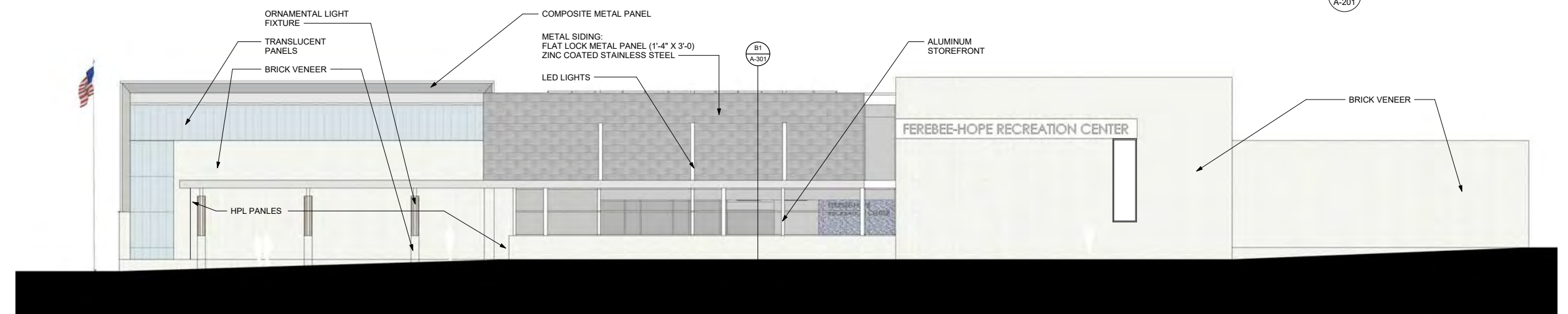
C5 LEFT SIDE ELEVATION



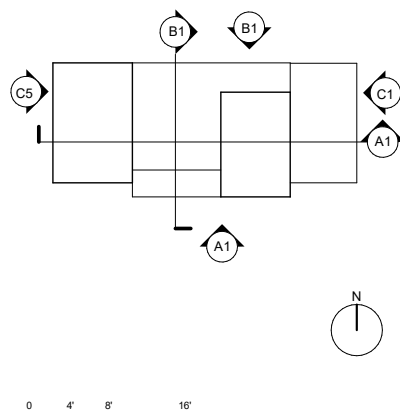
C1 RIGHT SIDE ELEVATION



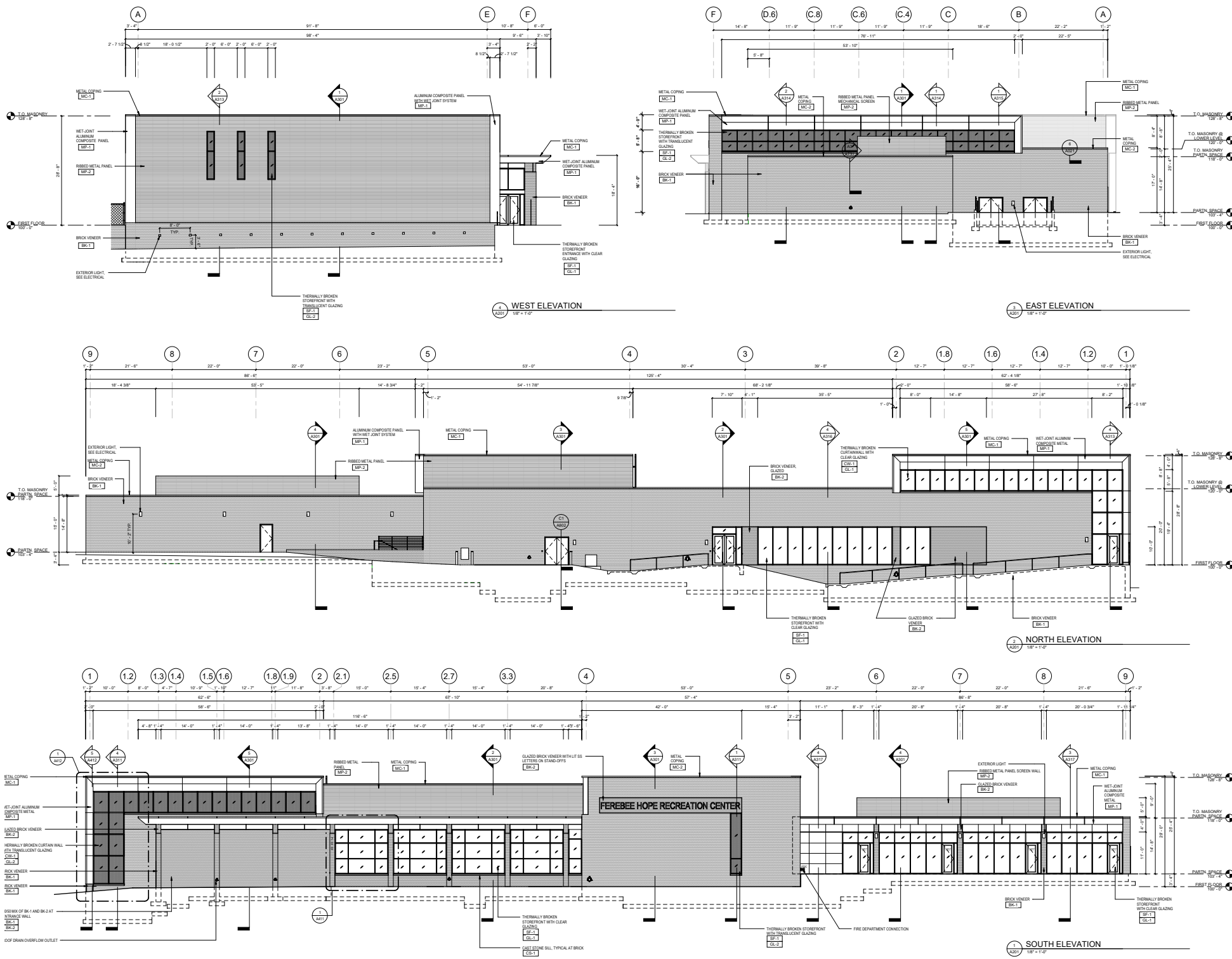
B1 REAR ELEVATION



A1 FRONT ELEVATION



0 4' 8' 16'





Existing Condition



HPL Panels

Flat Lock Panels

Brick Veneer
White to Light Gray
Tones

Aluminum Storefront

Composite Metal Panels

Translucent Panels

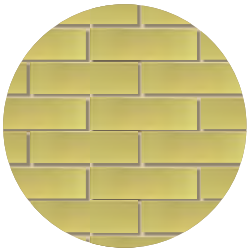


- BUILDING ENVELOPE**
HIGH PERFORMANCE ENVELOPE CONSTRUCTION
- TRANSLUCENT GLAZING**
TRANSLUCENT GLAZING STOREFRONT SYSTEM AT EASTERN FACING WINDOWS IN FAMILY POOL TO REDUCE GLARE.
- ALUMINUM COMPOSITE PANEL CLADDING**
ALUMINUM COMPOSITE PANELS AND COPINGS ARE IMPACT RESISTANT AND LONG LASTING.
- GLAZED BRICK CLADDING**
GLAZED BRICK IS USED TO CREATE A PEDESTRIAN SCALE ALONG YUMA STREET SE
- SIGNAGE**
ALUMINUM PIN MOUNTED SIGNAGE TO MATCH MULLION COLOR.
- BRICK CLADDING**
BRICK CLADDING IS DURABLE, LONG LASTING, AND REQUIRES LITTLE MAINTENANCE.
- GLAZING**
HIGH PERFORMANCE STOREFRONT SYSTEM WITH VIRACON VRE-43 GLAZING. GLAZING TO BE ARGON FILLED, INSULATED CLEAR GLASS WITH SINGLE COMPONENT THERMO SPACER.
- TREES**
NEW LARGE STREET TREES ALONG YUMA STREET SE
- SECURITY- LIGHTING AND CAMERAS**
EXTERIOR LIGHTING AND SECURITY CAMERAS WILL BE PROVIDED AT ALL SITE ACCESS POINTS AND AROUND BUILDING PERIMETER.

MATERIALS USED



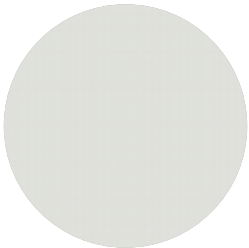
BRICK CLADDING
TAYLOR
ALPINE GREY



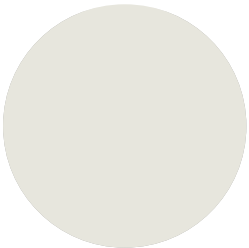
GLAZED BRICK CLADDING
BELDEN BRICK
TRAFFIC YELLOW



GLAZING
KAWNEER
ALUMINUM STOREFRONT SYSTEM
DOVE GRAY



ALUMINUM COMPOSITE METAL
NORTHCLAD
BONE WHITE



RIBBED METAL PANEL
PAC-CLAD
STONE WHITE

Existing Condition



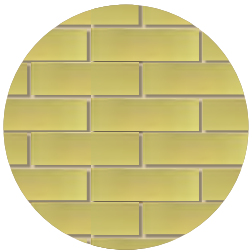


BUILDING ENVELOPE
HIGH PERFORMANCE ENVELOPE CONSTRUCTION
TRANSLUCENT GLAZING
TRANSLUCENT GLAZING STOREFRONT SYSTEM AT WESTERN FACING WINDOWS IN GYMNASIUM TO REDUCE GLARE.
ALUMINUM COMPOSITE PANEL CLADDING
ALUMINUM COMPOSITE PANELS AND COPINGS ARE IMPACT RESISTANT AND LONG LASTING.
RIBBED METAL PANEL CLADDING
RIBBED METAL PANEL CLADDING IS AFFORDABLE, DURABLE AND IMPACT RESISTANT
BRICK CLADDING
BRICK CLADDING IS DURABLE, LONG LASTING, AND REQUIRES LITTLE MAINTENANCE.
GLAZED BRICK CLADDING
GLAZED BRICK IS USED TO HIGHLIGHT THE ACTIVITY WITHIN THE MULTIPURPOSE ROOM AND GYMNASIUM
GLAZING
HIGH PERFORMANCE STOREFRONT SYSTEM WITH VIRACON VRE-43 GLAZING. GLAZING TO BE ARGON FILLED, INSULATED CLEAR GLASS WITH SINGLE COMPONENT THERMO SPACER.
SECURITY- LIGHTING AND CAMERAS
EXTERIOR LIGHTING AND SECURITY CAMERAS WILL BE PROVIDED AT ALL SITE ACCESS POINTS AND AROUND BUILDING PERIMETER.

MATERIALS USED



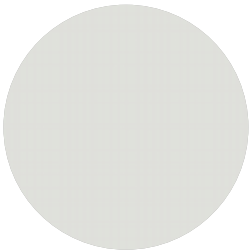
BRICK CLADDING
TAYLOR
ALPINE GREY



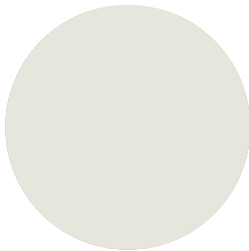
GLAZED BRICK CLADDING
BELDEN BRICK
TRAFFIC YELLOW



GLAZING
KAWNEER
ALUMINUM STOREFRONT SYSTEM
DOVE GRAY



ALUMINUM COMPOSITE METAL
NORTHCLAD
BONE WHITE



RIBBED METAL PANEL
PAC-CLAD
STONE WHITE

Existing Condition



