

Pentagon 9/11 Memorial Visitor Education Center

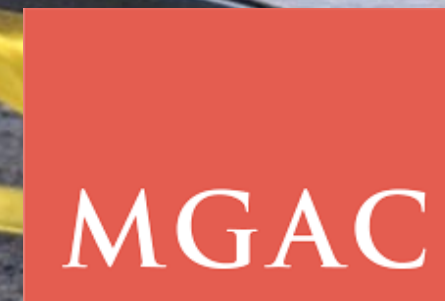
Arlington, VA

U.S. Commission of Fine Arts
Concept Submittal

April 7, 2022



The Pentagon
Memorial Fund



Mark G. Anderson
Consultants, Inc.



Fentress
Architects

Table of Contents

Project Background.....	1
Introduction	1.2
Project Goals and Program	1.3
Site History	1.4
ANC Southern Expansion Project	1.5
View Sheds	1.6
Site Context	1.7
Proximity to 9/11 Memorial	1.12
 Project Design.....	 2
Project Concept Development Diagrams	2.2
Anti-Terrorism/Force Protection (ATFP) Provisions	2.8
Illustrative Site Plan	2.11
Floor Plans	2.12
Renderings	2.13
Facade Deign Concept and Materials	2.19
Elevation Drawings	2.21
 Landscape Design.....	 3
Precedent Study	3.4
Edge Condition	3.5
Ground Plane	3.6
Plantings	3.7
Renderings	3.8



Project Background

- Introduction
- Project Goals and Program
- Site History
- ANC Southern Expansion Project
- View Sheds
- Site Context
- Proximity to 9/11 Memorial

Introduction

The National 9/11 Pentagon Memorial (Memorial) was dedicated in 2008 and receives nearly 1 million visitors each year. Many of those who visit are middle school-age children born after the events of September 11th, 2001, visiting the memorial and arriving in school buses as members of school sanctioned tours. The Pentagon Memorial Fund (PMF) is planning the design and construction of a 9/11 Pentagon Memorial Visitor Education Center (VEC) to supplement the Memorial experience. The mission of the education center is to educate visitors and honor the memory of those lost in the attack along with the families, first responders and all who supported the rescue, recovery, repair and healing that day and the days, months and years that followed, especially for the generation of visitors that did not experience those events directly.

The VEC will enhance and enrich the visitor experience of the Memorial itself through the content and exhibitions within the VEC and through the design expression of the site and building itself. The path of Flight 77 traversed diagonally across the VEC site and the Memorial itself. The alignment of the flight path line served as inspiration and organizing geometry of the 9/11 Memorial designed by Julie Beckman and Keith Kaseman. The VEC project seeks to create a strong geometric, symbolic and physical link between the Memorial and the VEC which will integrate the two sites and facilitate pedestrian movement between them.

In the wider regional context, the site will be located at the intersection of South Joyce Street and the realigned Columbia Pike at a grade significantly below adjacent Interstate 395 and Route 27, Washington Blvd on the south and east, respectively. The site has been made available to the PMF by Arlington National Cemetery (ANC) through the Southern Expansion Project in accordance with the Interpretive Component portion of the Arlington National Cemetery Real Property Master Plan. This location affords the closest proximity possible between the Memorial and the VEC and reflects the Washington Headquarter Service's desire to minimize visitor traffic to the Memorial in and around the Pentagon



Project Goals

- Supplement the Pentagon 9/11 Memorial Experience
- Educate the next generations of our population
- Explain the significance of 9/11, the events, the heroism, and the local and global response
- Design the facility to be financially sustainable

Program Components

The VEC is approximately 53,000 gross square feet contained in two levels and a partial rooftop terrace space.

The principal program components include the following spaces:

Level 1

- Building security/entry hall
- Visitor Center Store
- Exhibit Hall
- Vertical Circulation/Toilet Rooms, Back of House

Level 2

- Café
- Conference Facility
- Administrative Offices
- Vertical Circulation/Toilet Rooms, Mechanical

Roof Top

- Outdoor Terrace
- Vertical Circulation/Storage/Support

Parking

As noted above, most visitors will arrive by bus but parking for up to 125 cars is anticipated to accommodate conference center visitors, guests arriving in private vehicles and special events attendees - many of which will likely be held after hours.

2001 SITE

PENTAGON

ARLINGTON

CITGO STATION

NAVY ANNEX



2022 EXISTING SITE

PENTAGON

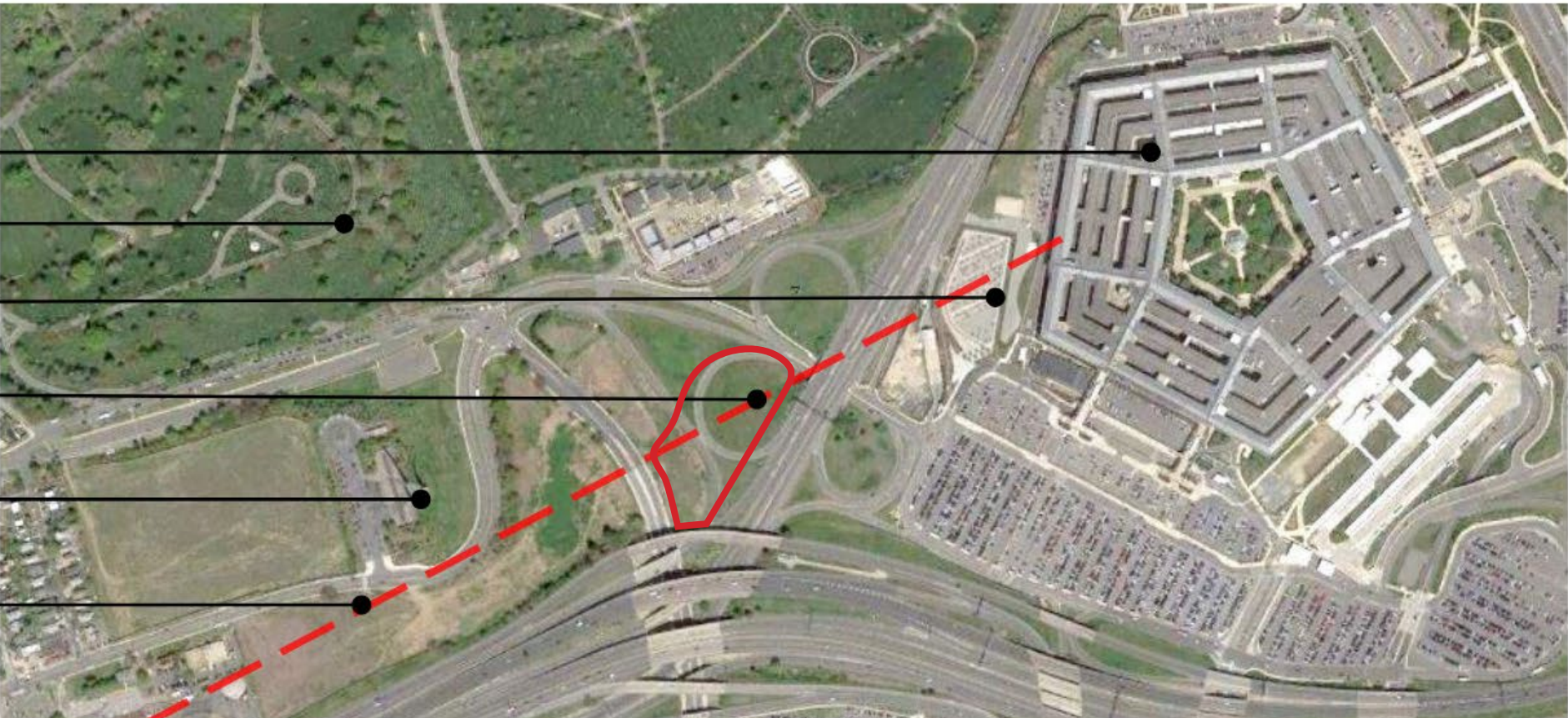
ARLINGTON

9/11 PENTAGON MEMORIAL

VEC SITE

AIR FORCE MEMORIAL

FLIGHT PATH





ARLINGTON
NATIONAL
CEMETERY

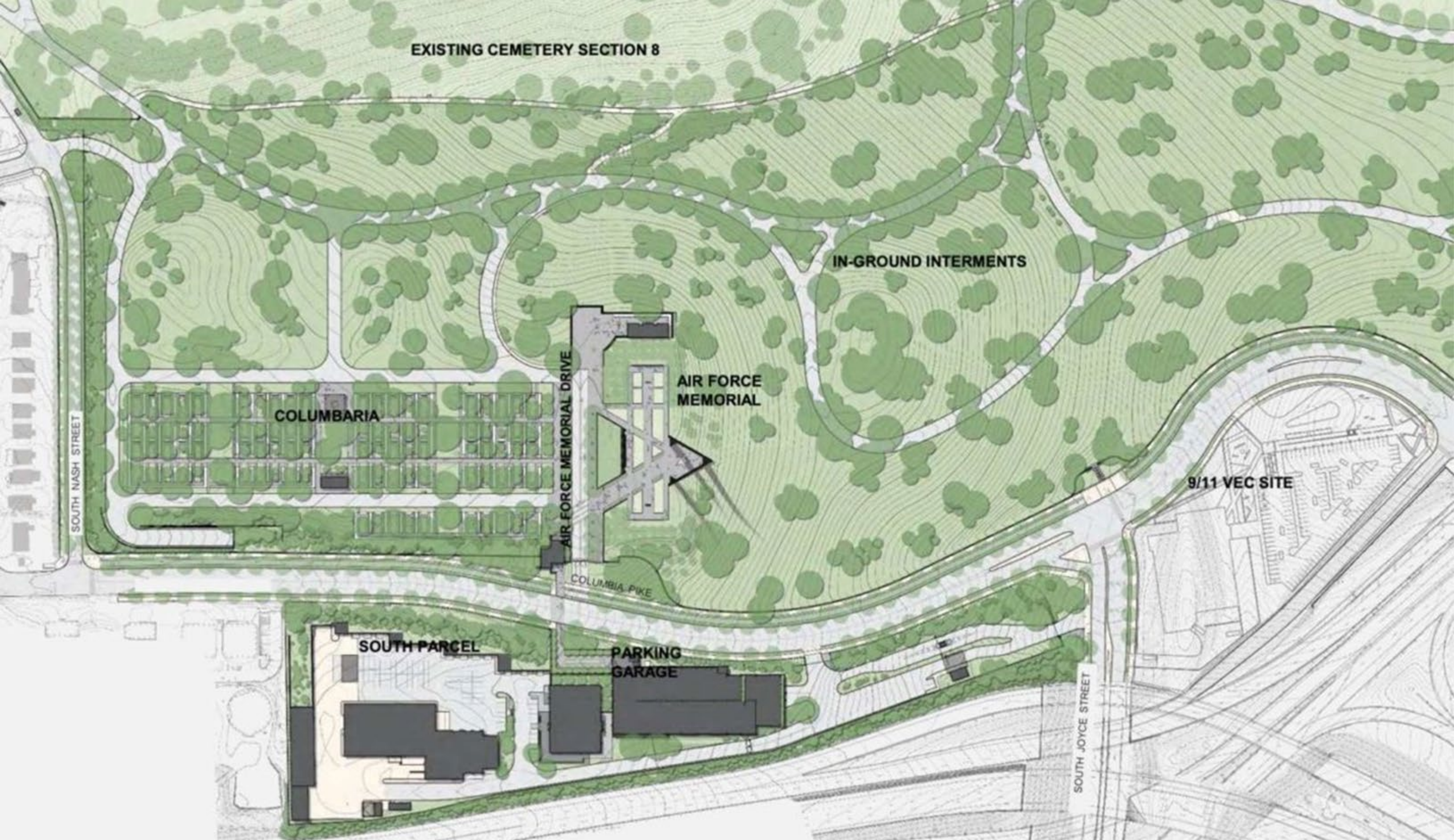
ANC NORTHERN
EXPANSION SITE

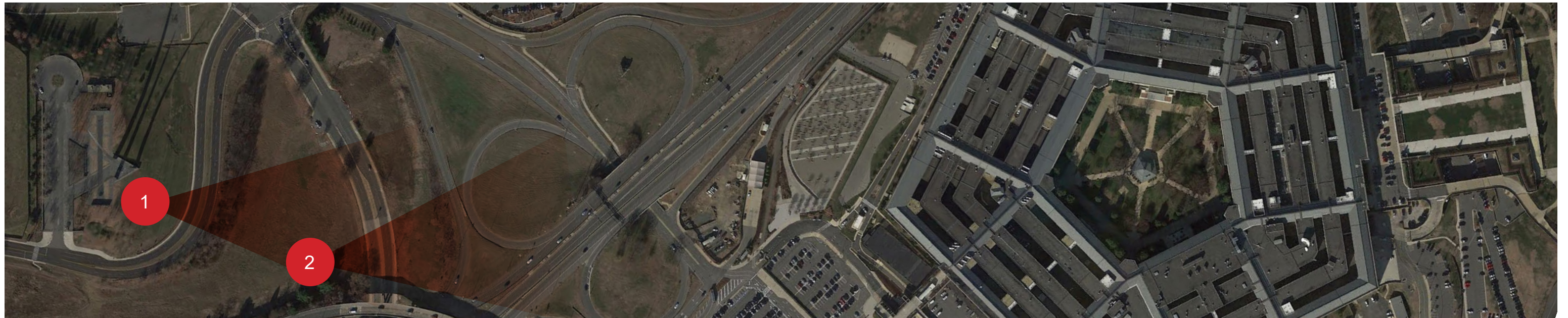
ANC SOUTHERN
EXPANSION SITE

PENTAGON 9/11 VEC
PROJECT SITE



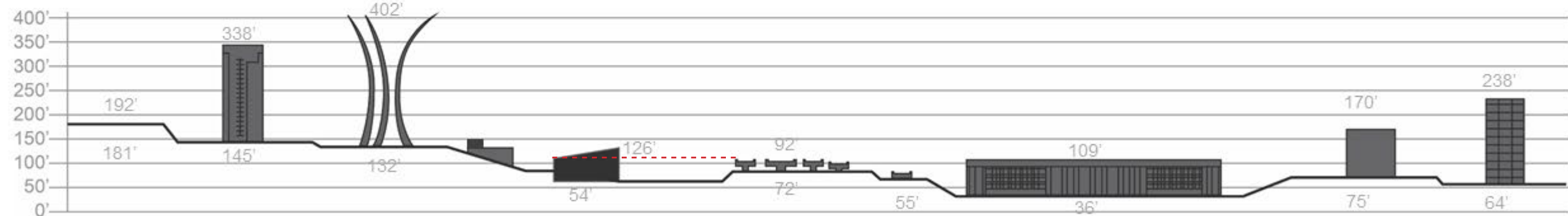
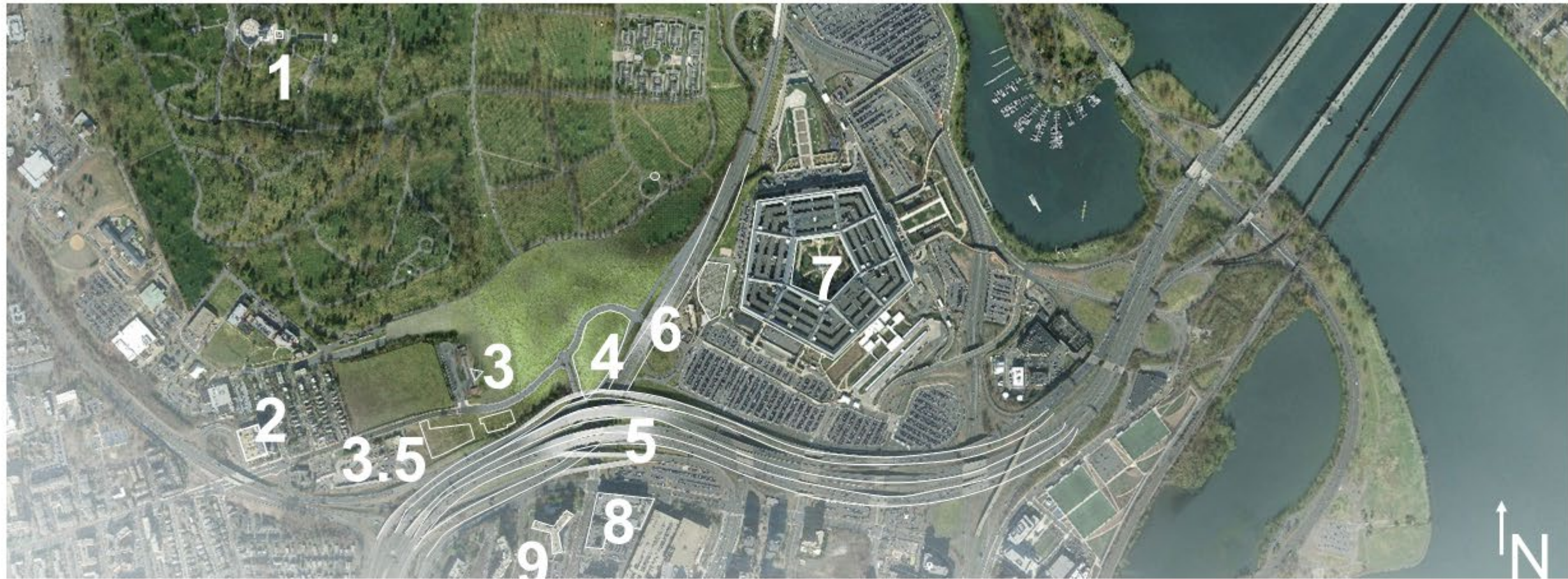






Existing Condition - Pre Southern Expansion and DAR Projects

CFA Submittal • April 7, 2022

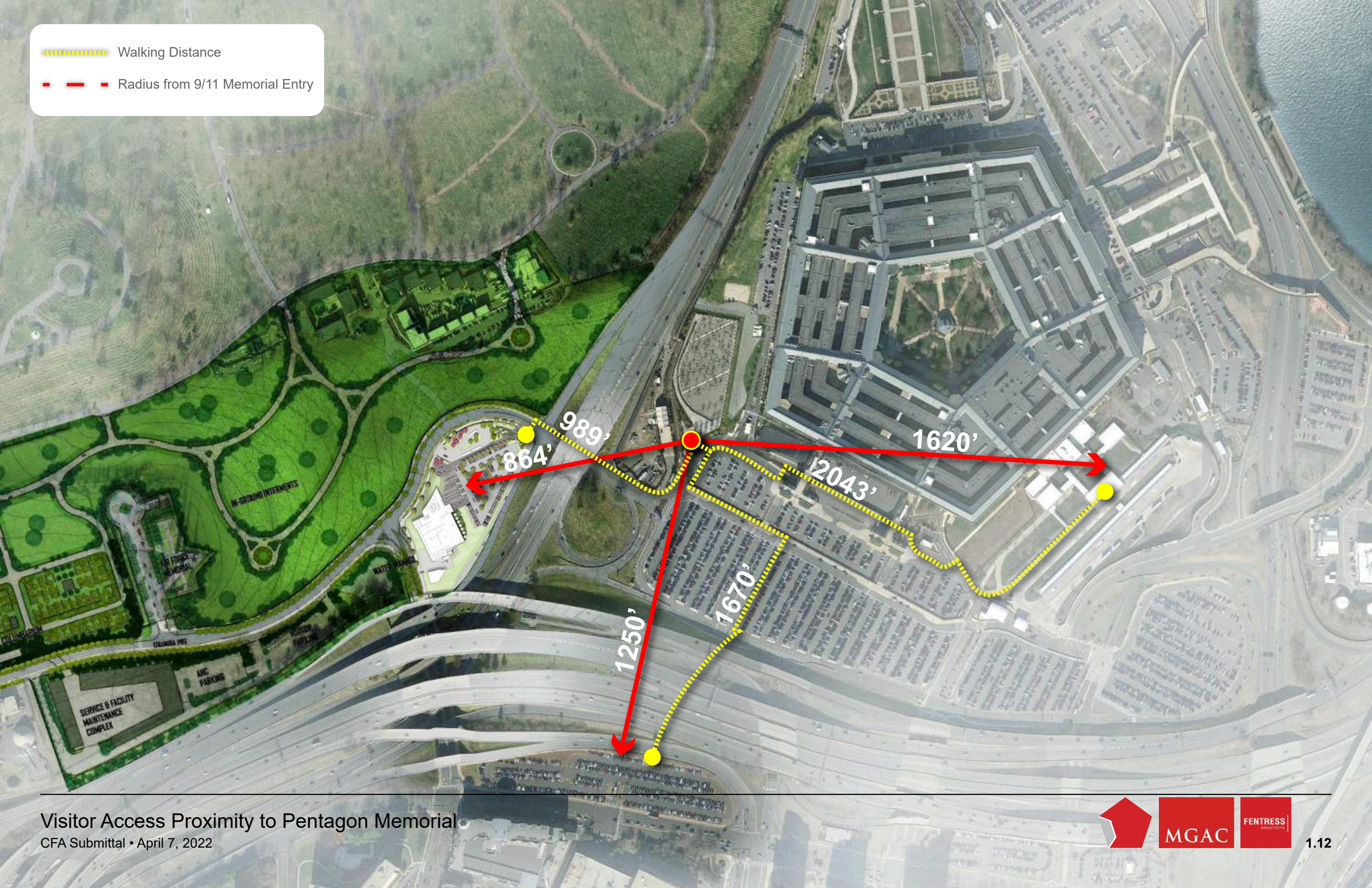


- 1** TOMB OF THE UNKNOWN SOLDIER
- 2** SHERATON HOTEL
- 3** AIR FORCE MEMORIAL
- 3.5** ANC PARKING STRUC, 3RD FLR PARAPET
- 4** 9/11 PENTAGON MEMORIAL VISITOR EDUCATION CTR
- 5** I-395
- 6** WASHINGTON BLVD
- 7** PENTAGON
- 8** PENTAGON ROW SHOPPING CENTER
- 9** JAMES AT RIVER HOUSE



Walking Distance

Radius from 9/11 Memorial Entry



Project Design

- Project Concept Development Diagrams
- Anti-Terrorism/Force Protection (ATFP) Provisions
- Illustrative Site Plan
- Floor Plans
- Renderings
- Facade Design Concept and Materials
- Elevation Drawings



Preferred Site Location
CFA Submittal • April 7, 2022



Relationship to Memorial

CFA Submittal • April 7, 2022

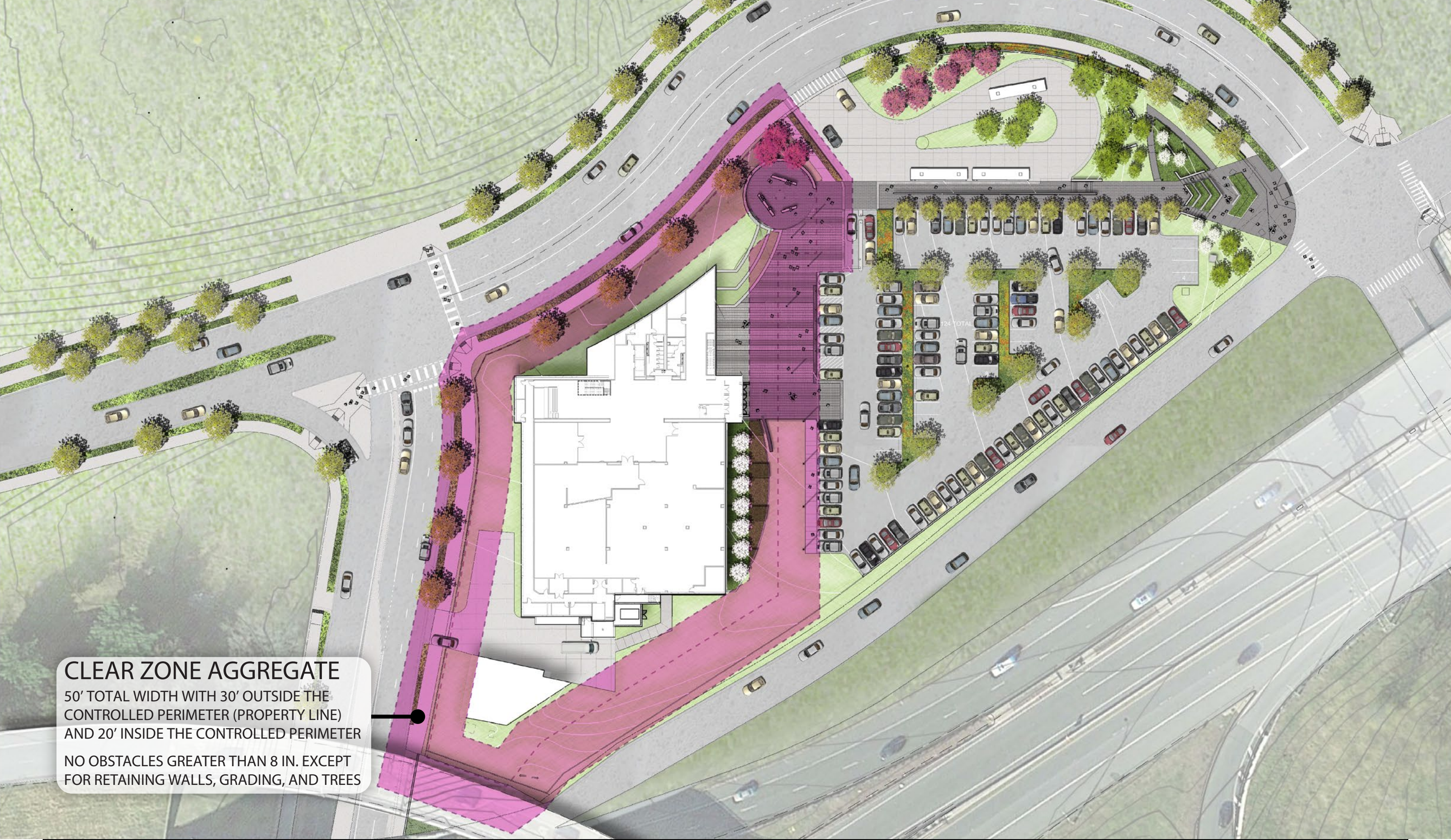






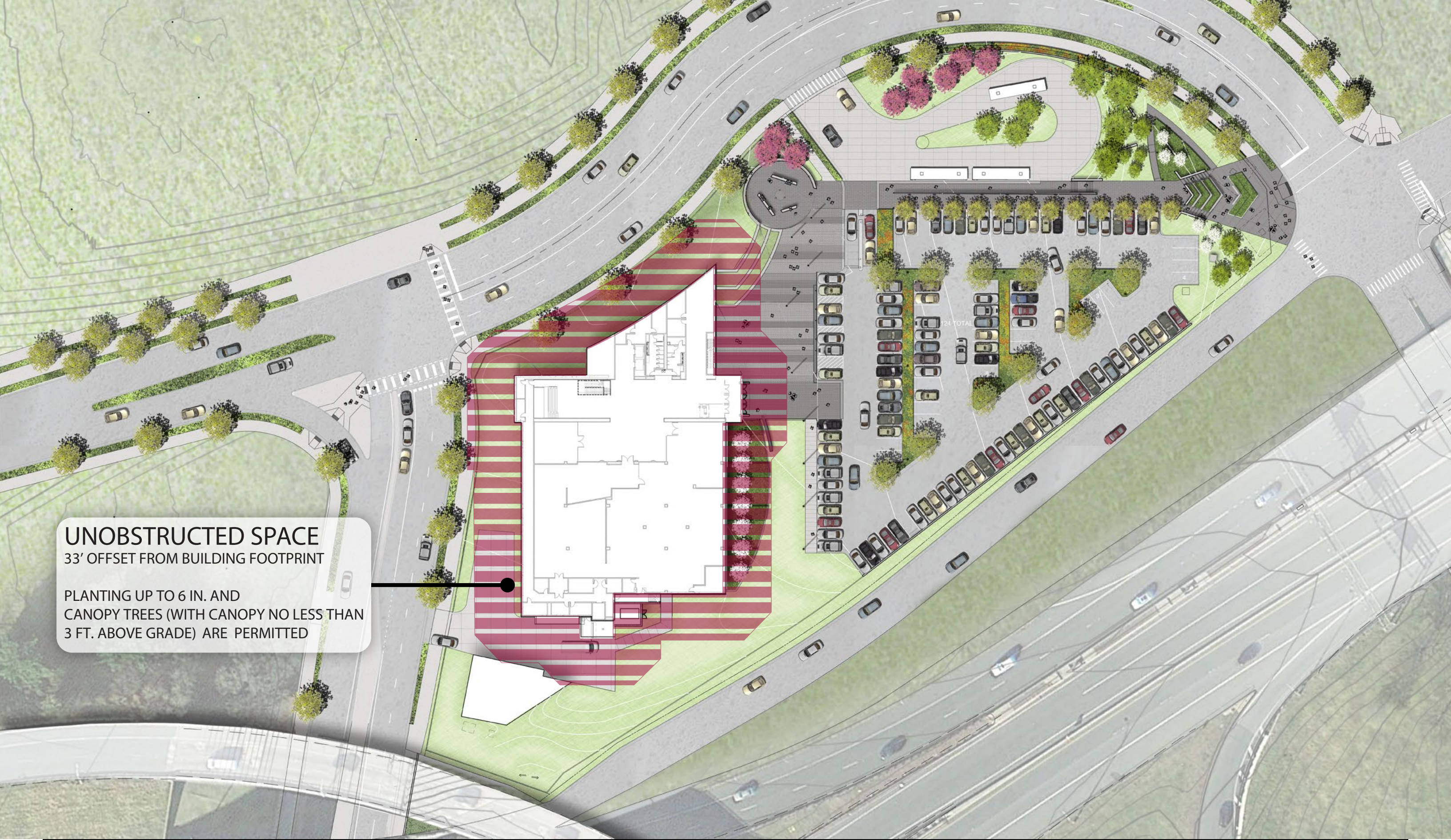






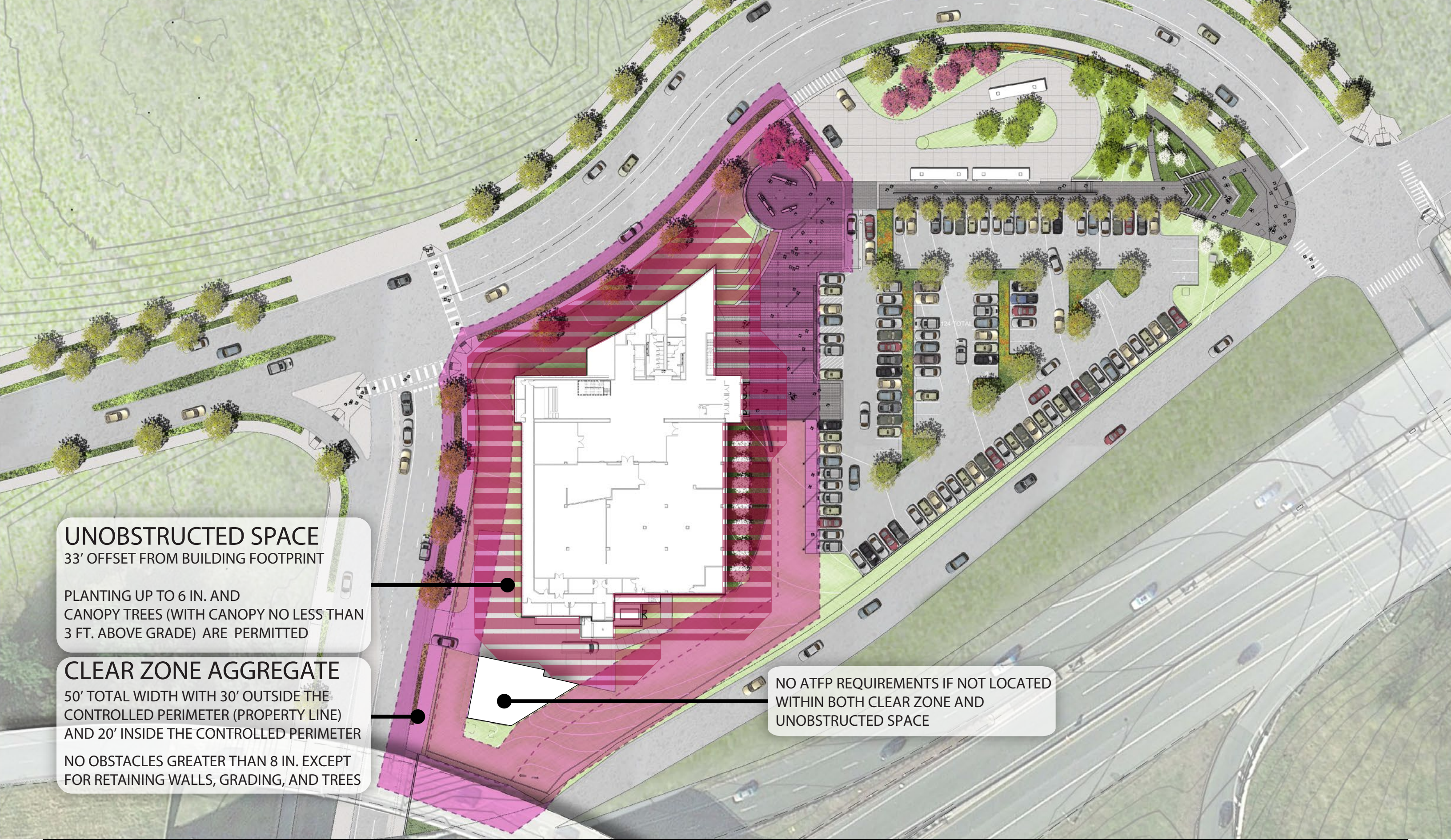
CLEAR ZONE AGGREGATE
50' TOTAL WIDTH WITH 30' OUTSIDE THE
CONTROLLED PERIMETER (PROPERTY LINE)
AND 20' INSIDE THE CONTROLLED PERIMETER

NO OBSTACLES GREATER THAN 8 IN. EXCEPT
FOR RETAINING WALLS, GRADING, AND TREES



UNOBSTRUCTED SPACE
33' OFFSET FROM BUILDING FOOTPRINT

PLANTING UP TO 6 IN. AND
CANOPY TREES (WITH CANOPY NO LESS THAN
3 FT. ABOVE GRADE) ARE PERMITTED



UNOBSTRUCTED SPACE

33' OFFSET FROM BUILDING FOOTPRINT

PLANTING UP TO 6 IN. AND CANOPY TREES (WITH CANOPY NO LESS THAN 3 FT. ABOVE GRADE) ARE PERMITTED

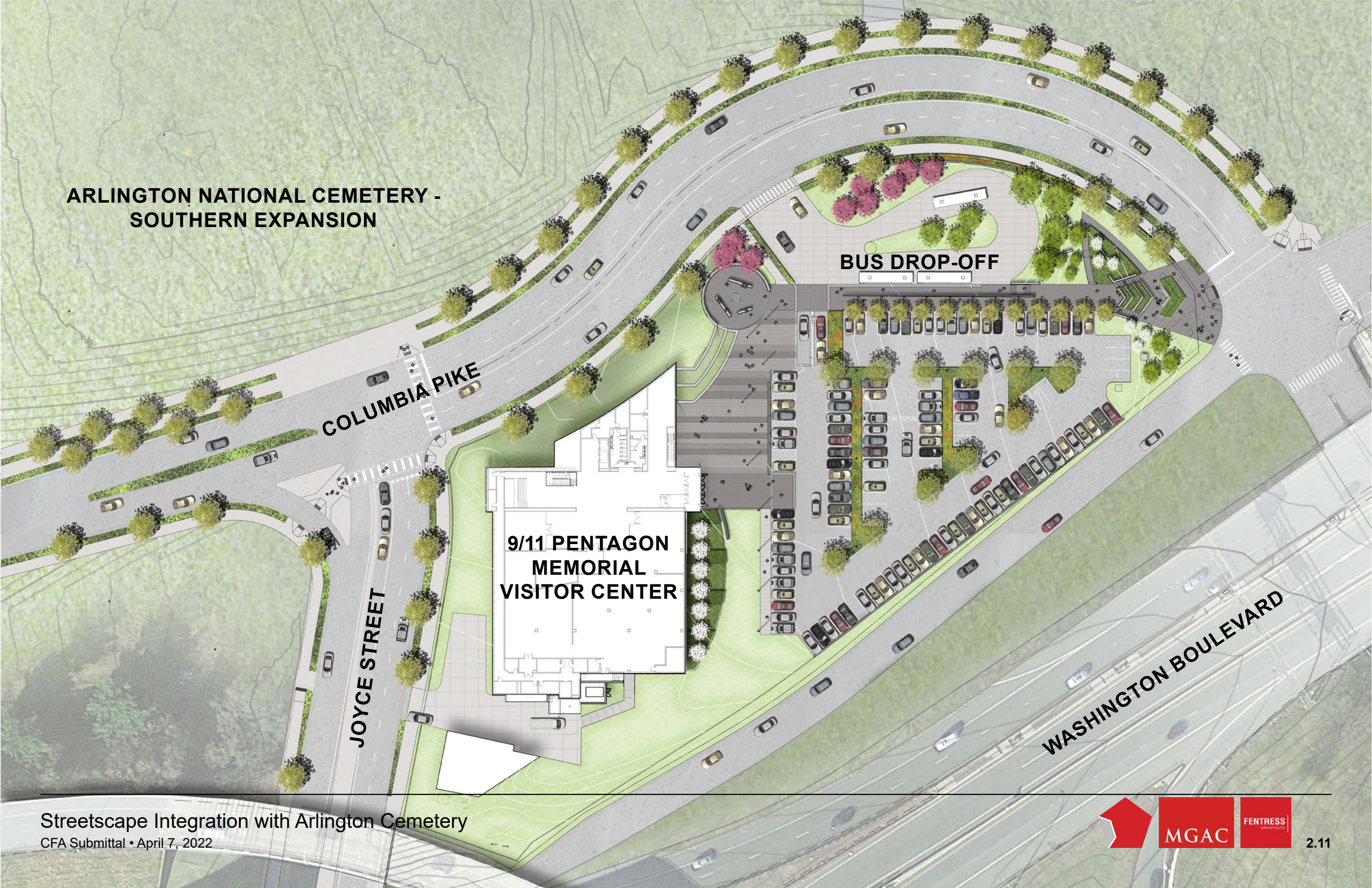
CLEAR ZONE AGGREGATE

50' TOTAL WIDTH WITH 30' OUTSIDE THE CONTROLLED PERIMETER (PROPERTY LINE) AND 20' INSIDE THE CONTROLLED PERIMETER

NO OBSTACLES GREATER THAN 8 IN. EXCEPT FOR RETAINING WALLS, GRADING, AND TREES

NO ATFP REQUIREMENTS IF NOT LOCATED WITHIN BOTH CLEAR ZONE AND UNOBSTRUCTED SPACE

ARLINGTON NATIONAL CEMETERY -
SOUTHERN EXPANSION



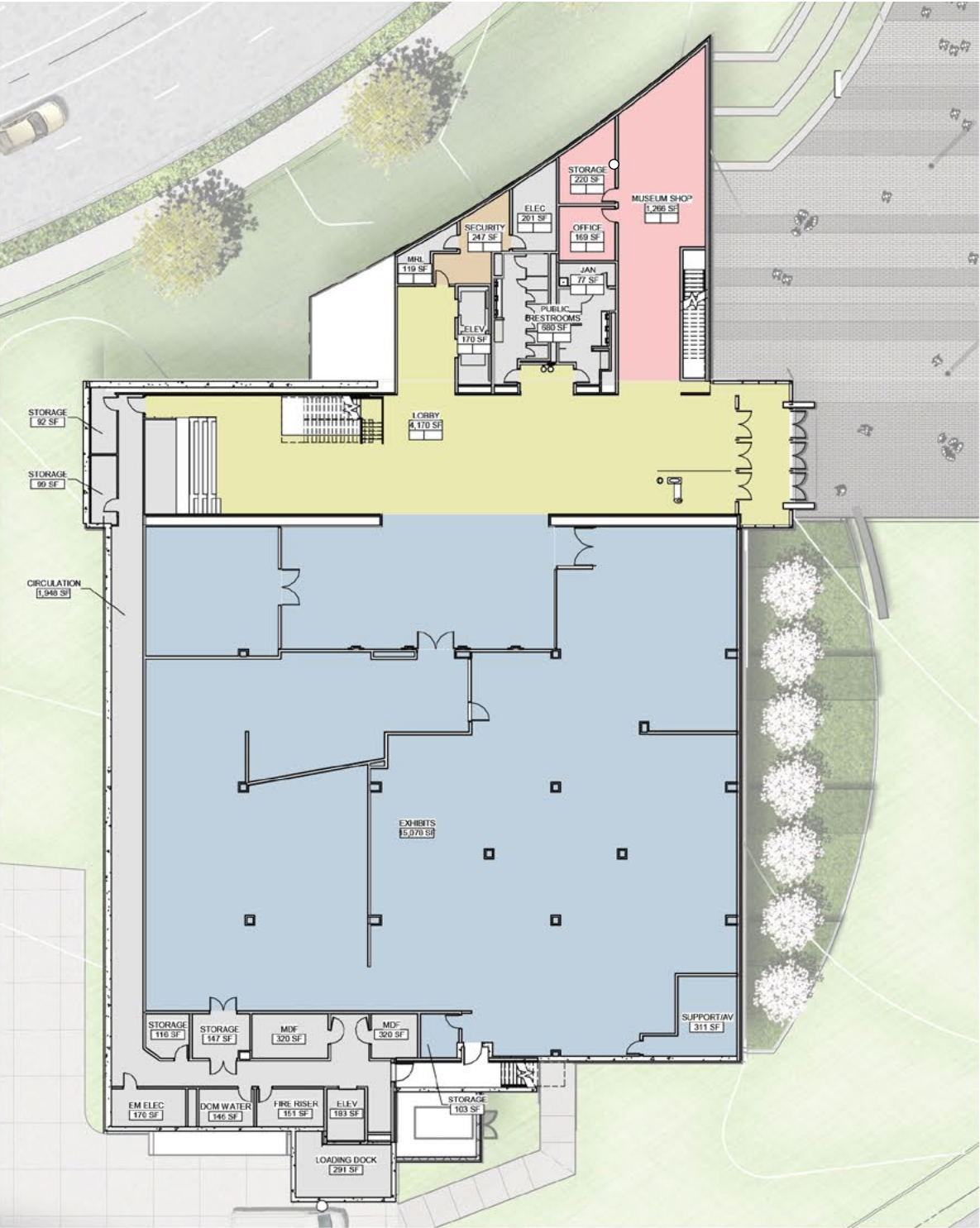
COLUMBIA PIKE

JOYCE STREET

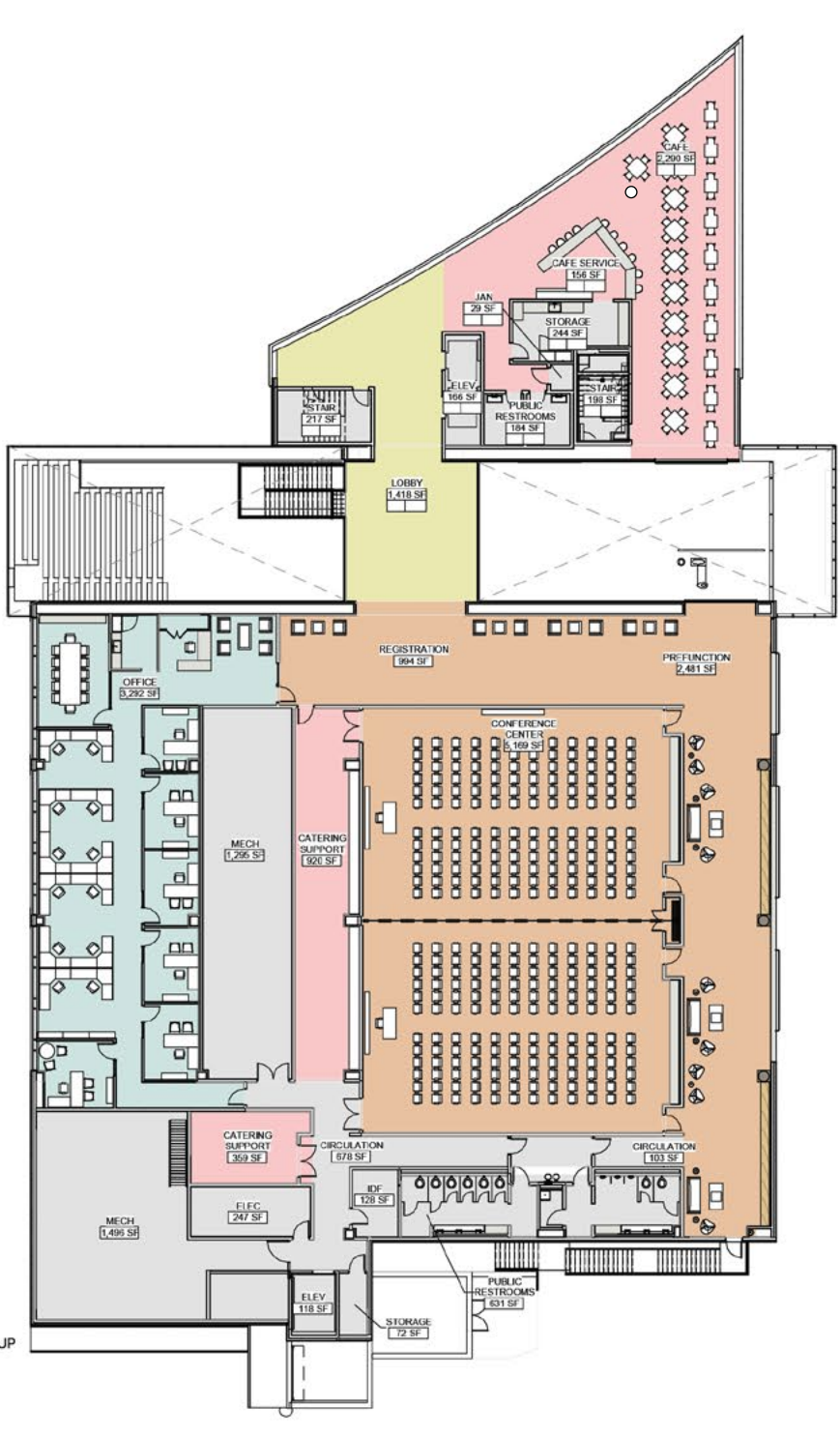
9/11 PENTAGON
MEMORIAL
VISITOR CENTER

BUS DROP-OFF

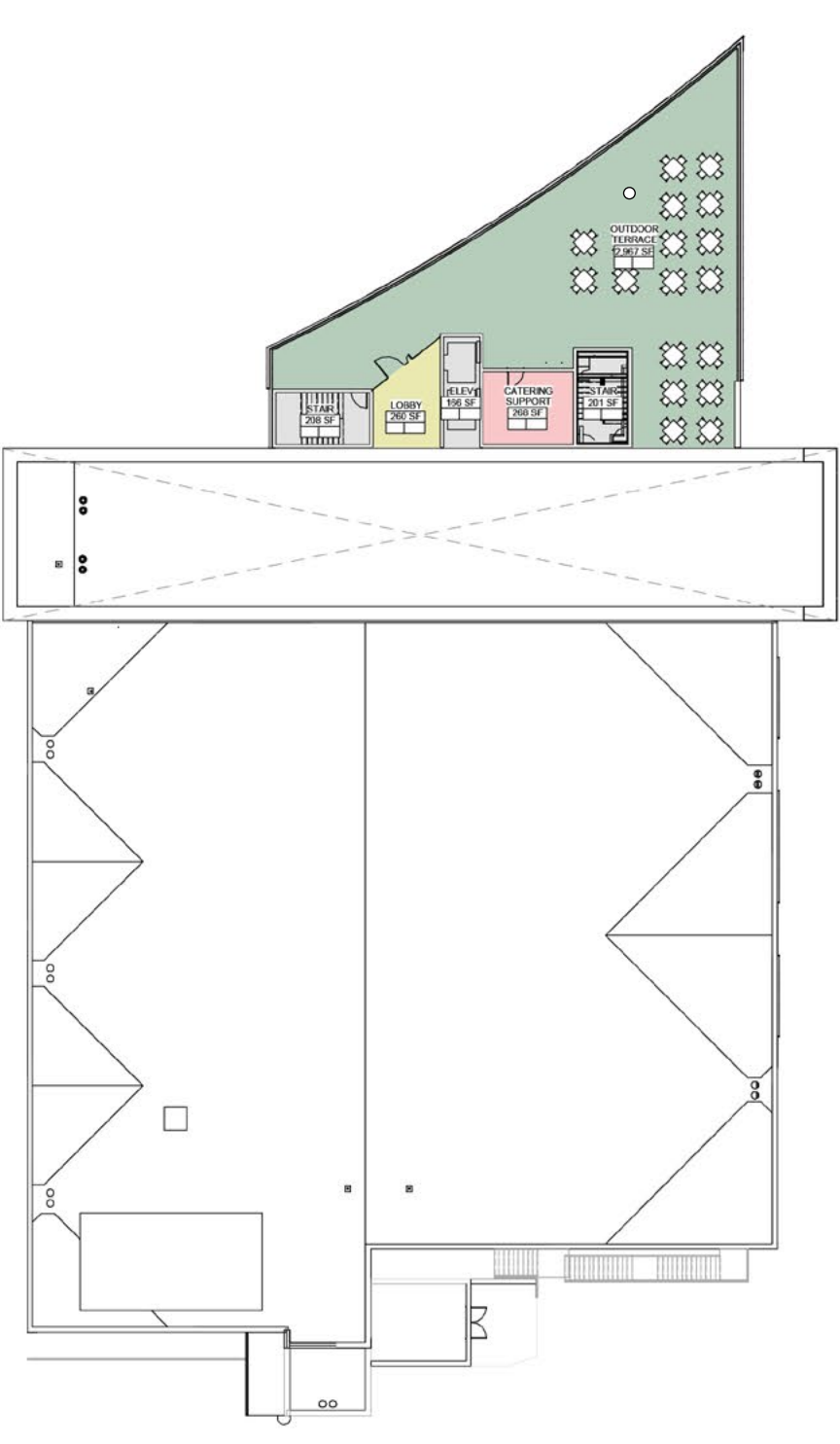
WASHINGTON BOULEVARD



LEVEL 01



LEVEL 02



LEVEL 03

2

ARLINGTON NATIONAL CEMETERY -
SOUTHERN EXPANSION

5

COLUMBIA PIKE

JOYCE STREET

9/11 PENTAGON
MEMORIAL
VISITOR CENTER

3

BUS DROP-OFF

1

4

WASHINGTON BOULEVARD















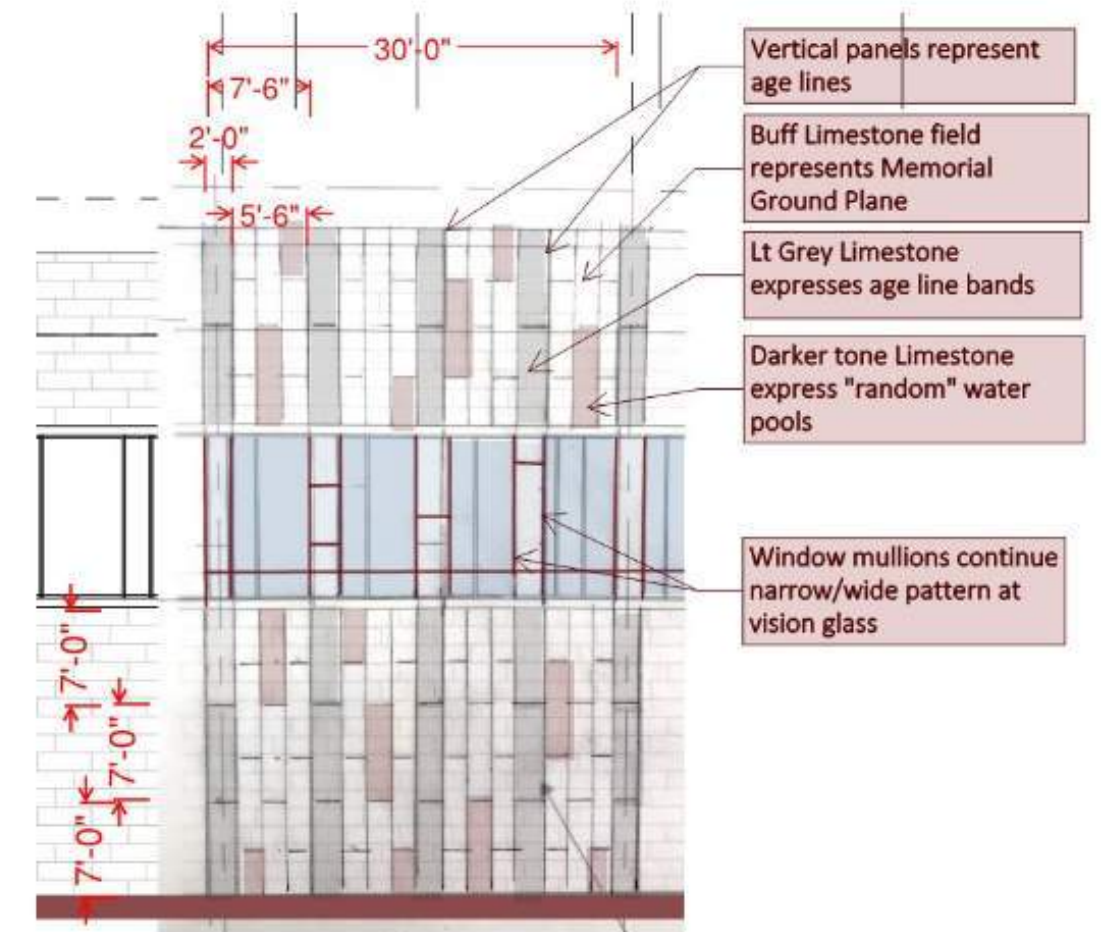
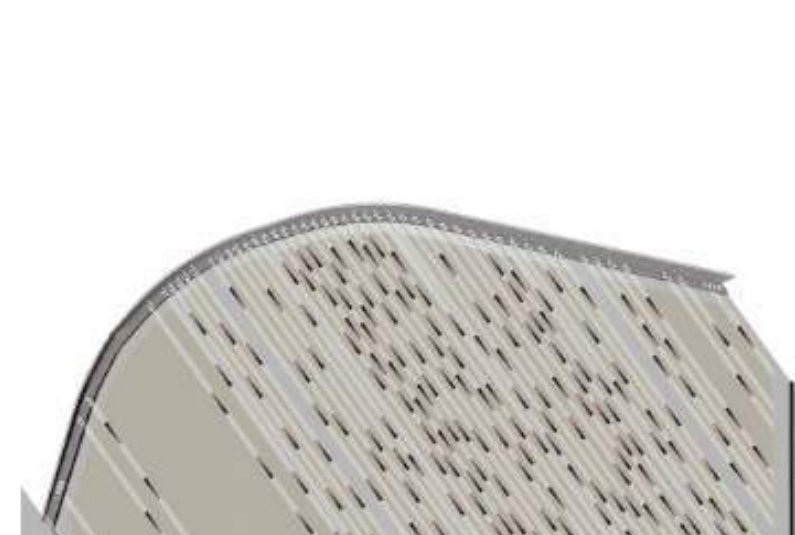
Facade Concept

In keeping with the objective of the VEC to be an extension of the Memorial, a careful analysis of the rich geometry, texture and pattern of the Memorial has informed the design the VEC façade. Analysis reveals the Memorial is a rich tapestry of layers consisting of:

- The base ground plane consists of stone gravel paving
- The age band strips establish a linear geometric pattern and organize the benches and pools
- The benches and associated pools are placed in an irregular pattern on the ground plane
- When illuminated at night the pools create a dramatic array of light and reflected water on the underside of the benches
- In aggregate, these elements create a rich geometric texture derived from the rational placement of elements on the site.

The VEC façade aims to abstract this arrangement to provide connection and thereby tying the Memorial and VEC in their common mission.

The façade materials used to realize this are multicolored porcelain tile panels arranged to reflect the pattern described above. Other materials include translucent panels and transparent curtainwall elements at the lobby form which will provide a subtle glow of light in the evening hours.



0. VEC Facade Design Concept

Facade Material Concept

CFA Submittal • April 7, 2022



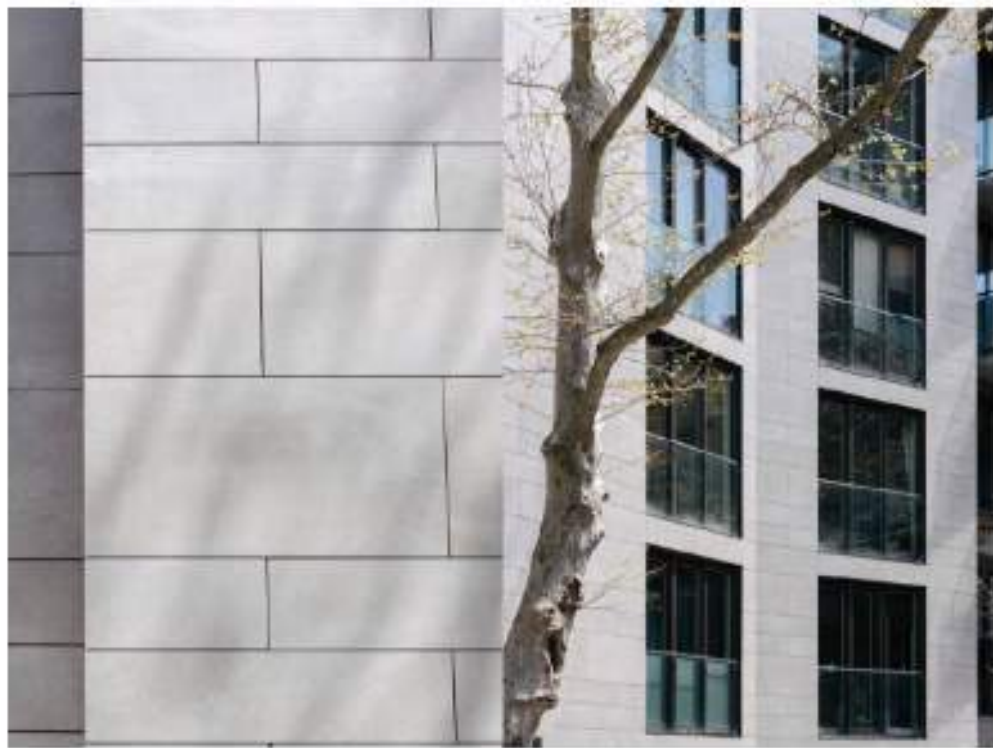
Porcelanosa - Bottega, White

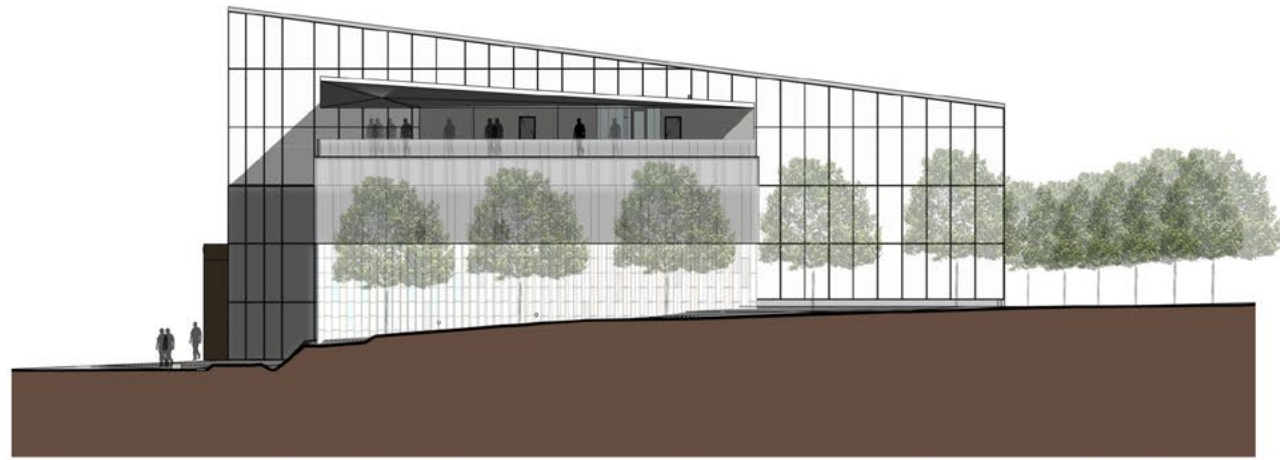


Porcelanosa - Bottega, Caliza

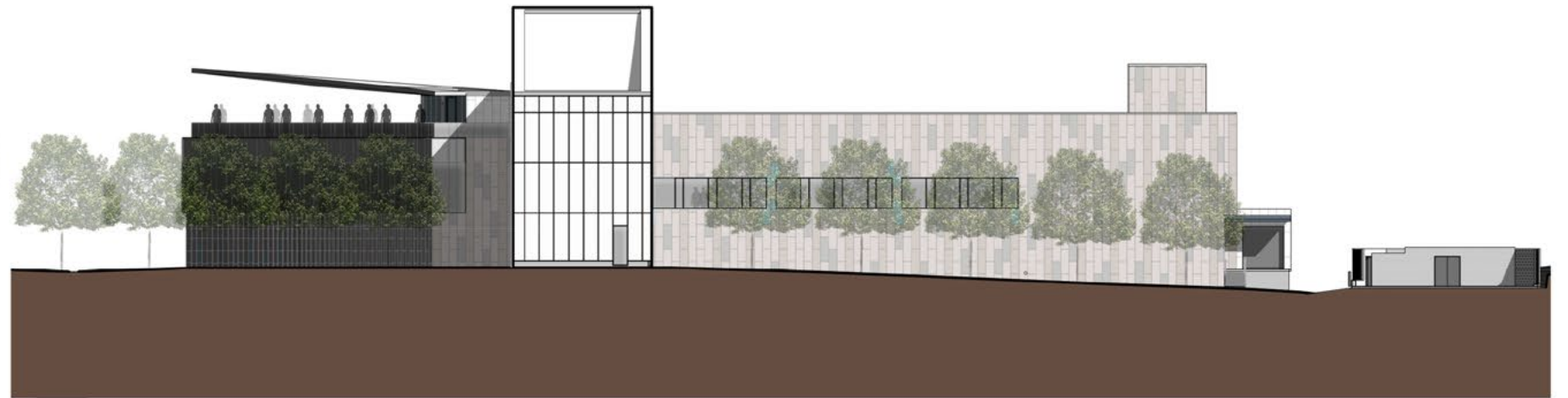


Porcelanosa - Bottega, Topo





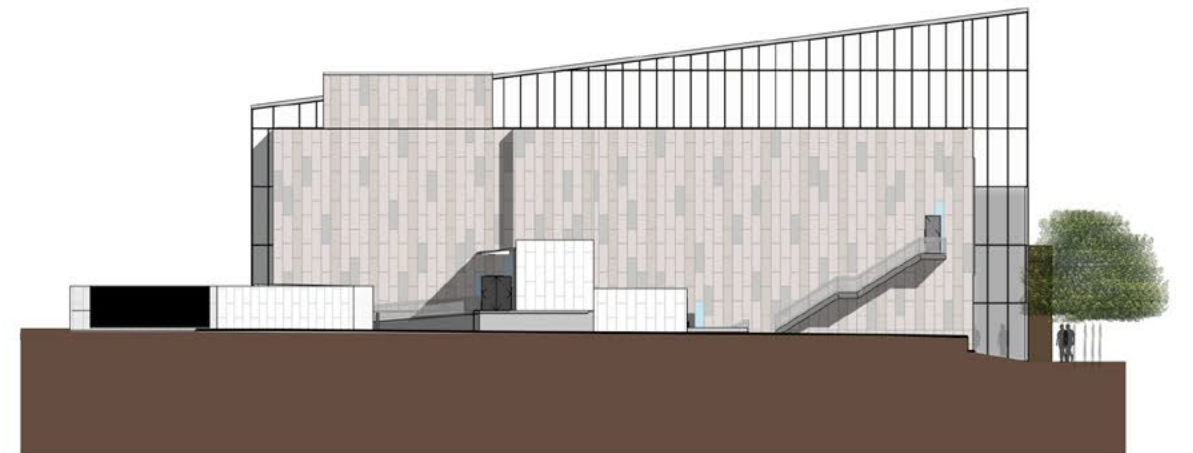
1 NORTH ELEVATION
A5101 SCALE: 1/16" = 1'-0"



1 WEST ELEVATION
A2101/A5102 SCALE: 1/16" = 1'-0"



2 EAST ELEVATION
A5101 SCALE: 1/16" = 1'-0"



2 SOUTH ELEVATION
A2101/A5102 SCALE: 1/16" = 1'-0"

Landscape Design

- Bus Plaza
- Precedent Study
- Edge Condition
- Ground Plane
- Planting Concept
- Vignettes





COLUMBIA PIKE

BUS LOOP

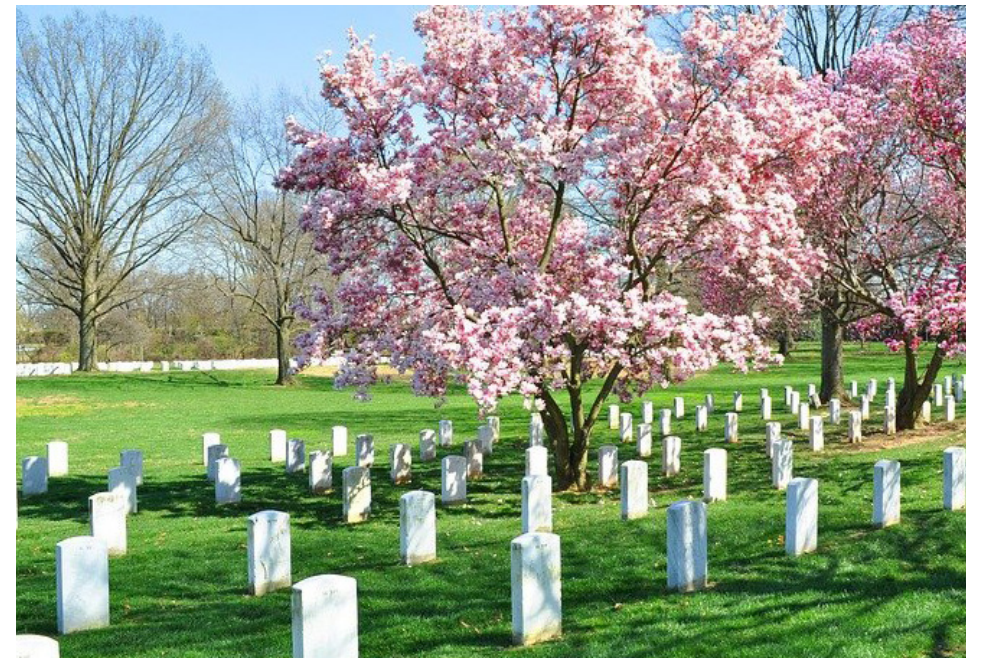
PRIVATE VEHICLE PARKING

Bus Drop Off Plaza
CFA Submittal • April 7, 2022

124 TOTAL



Columbia Pike Streetscape

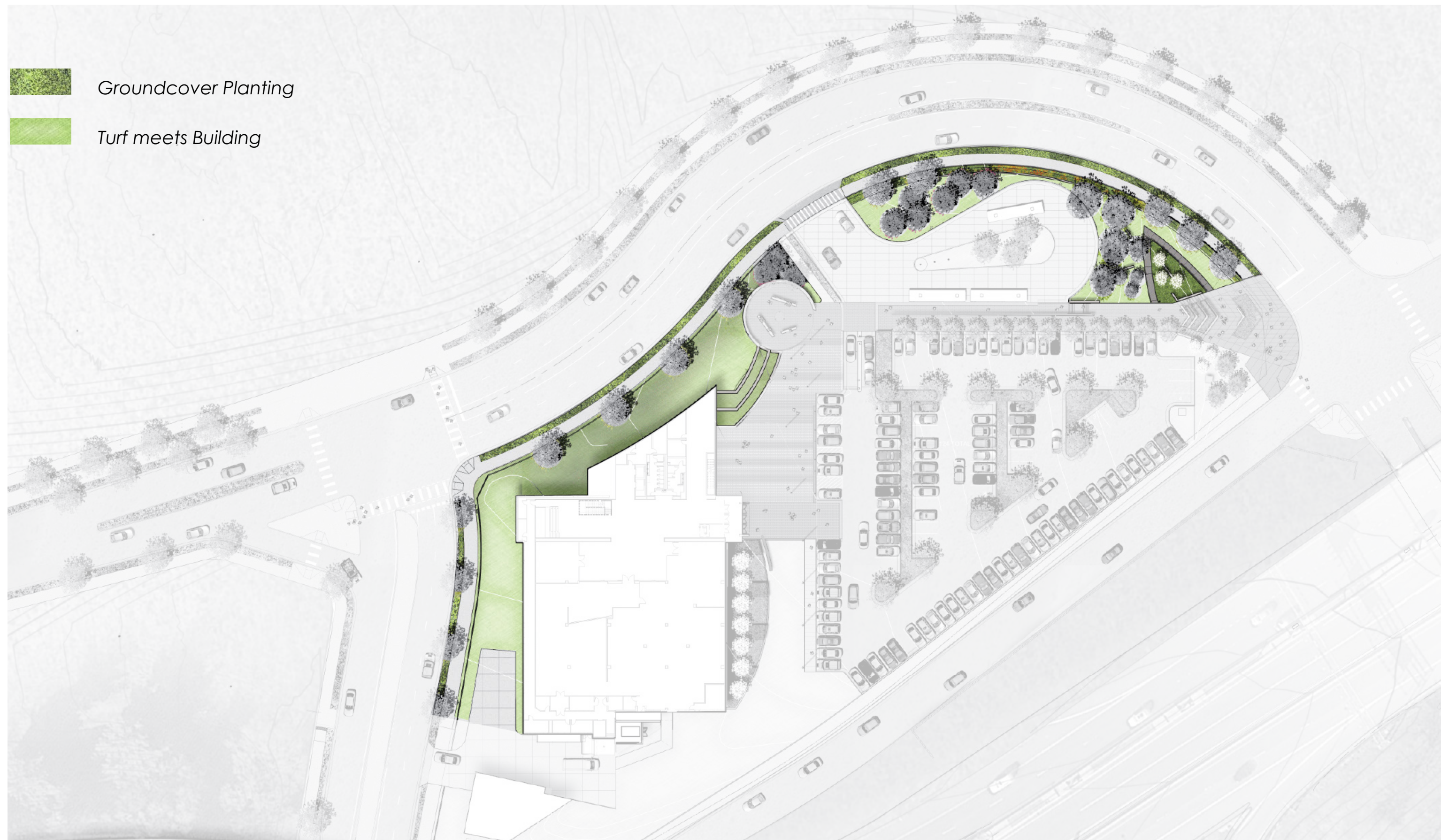


“

Nothing could be more
impressive than rank after rank
of white stones, inconspicuous in
themselves, covering the gentle,
wooded slopes and producing
the desired effect of a vast army
in its last resting place.

Charles Moore





9/11 VEC Edge Ground Plane

CFA Submittal • April 7, 2022







Rally Point



Promenade and Bus Drop Off



Promenade NE



Promenade Entrance NE