



Pennsylvania and Potomac Avenues SE Intersection Improvement Project

Final Submission to U.S. Commission of Fine Arts

April 21, 2022



d.

*** GOVERNMENT OF THE
DISTRICT OF COLUMBIA
DC MURIEL BOWSER, MAYOR

Project Overview- *Project Area*



CFA Concept Submission - July, 2021

Preferred Alternative Concept per CFA direction



CFA Comments

1. Keep plantings open, informal, and low in central ellipse. Do not add low branching trees to the central ellipse.
2. Keep plantings low, seasonal and flexible to allow for potential public art or commemorative elements in the future.
3. Carefully study the specific widths and alignments of the pathways within the park to minimize obstructions to pedestrian circulation.



d.

*** GOVERNMENT OF THE
DISTRICT OF COLUMBIA
MURIEL BOWSER, MAYOR

Final Design – Ellipse



CFA Comment 1:
Keep plantings open, informal, and low in central ellipse. Do not add low branching trees to the central ellipse. (CFA)

Response:
Removed trees from the central ellipse in favor of low-maintenance flowering perennials and simplified, low-growing evergreen shrubs along road edge.

Site Illustrative Plan



Planting Palette

SHADE TREE



Quercus bicolor (Swamp White Oak)

LOW, COMPACT HEDGE



Clethra alnifolia Sugartina 'Crystalina' (Summersweet)

NATIVE AND AROMATIC PERENNIALS AND GROUNDCOVERS



Allium 'Purple Sensation' (Persian Onion)



Monarda fistulosa (Wild Bergamot)



Carex pensylvanica (Pennsylvania Sedge)



Allium atropurpureum (Ornamental Onion)



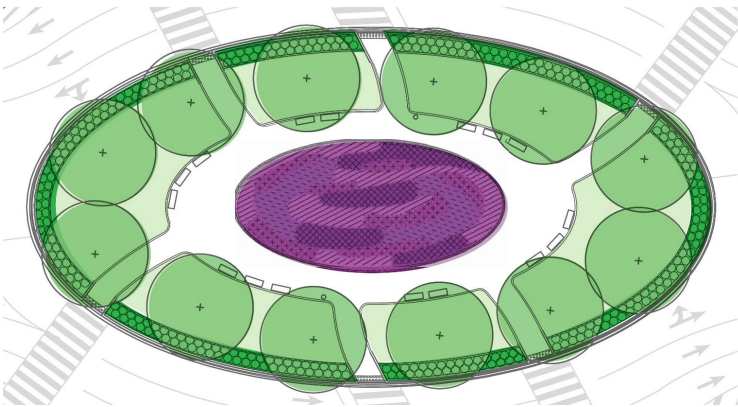
Nepeta racemose 'Walker's Low'



Narcissus 'Mount Hood' (Trumpet Daffodil)



Symphyotrichum novae-angliae (New England Aster)

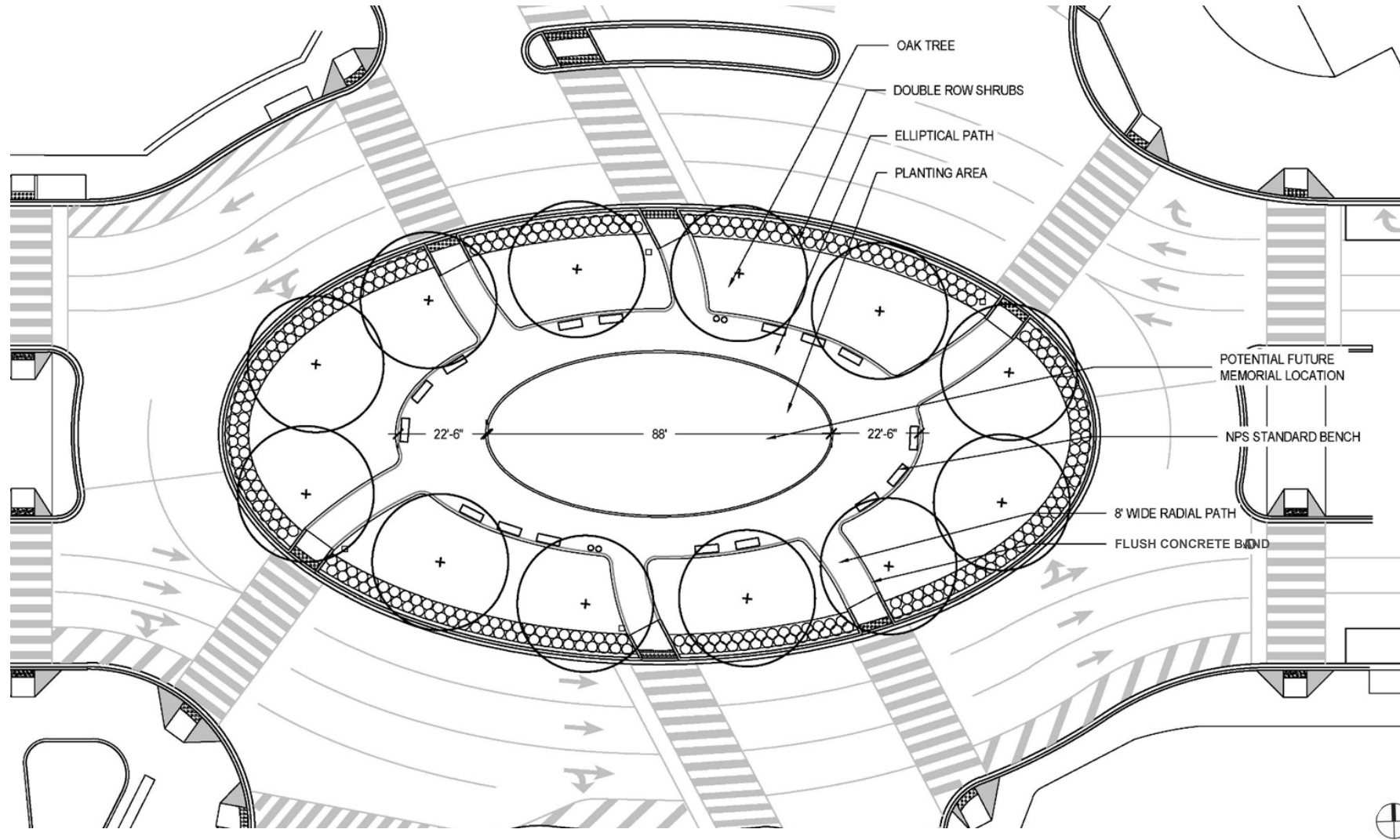


CFA Comment 2:
Keep plantings low, seasonal and flexible to allow for potential public art or commemorative elements in the future (NCPC).

Response:
Planting selection revised to reflect comments and provide seasonal interest and ease of maintenance.



Final Design – Ellipse



Site Technical Plan

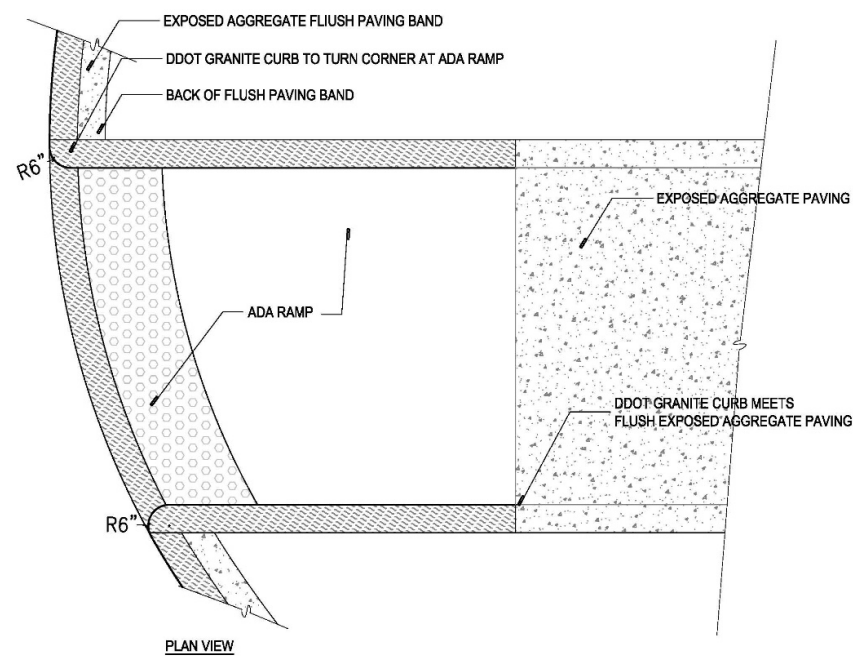
CFA Comment 3:
Carefully study the specific widths and alignments of the pathways within the park to minimize obstructions to pedestrian circulation.

Response:
Increased sidewalks to 9' from edge to edge (8' wide sidewalks with 6" flush concrete bands on either side). Center planted bed is raised with the NPS standard quarter round curb.

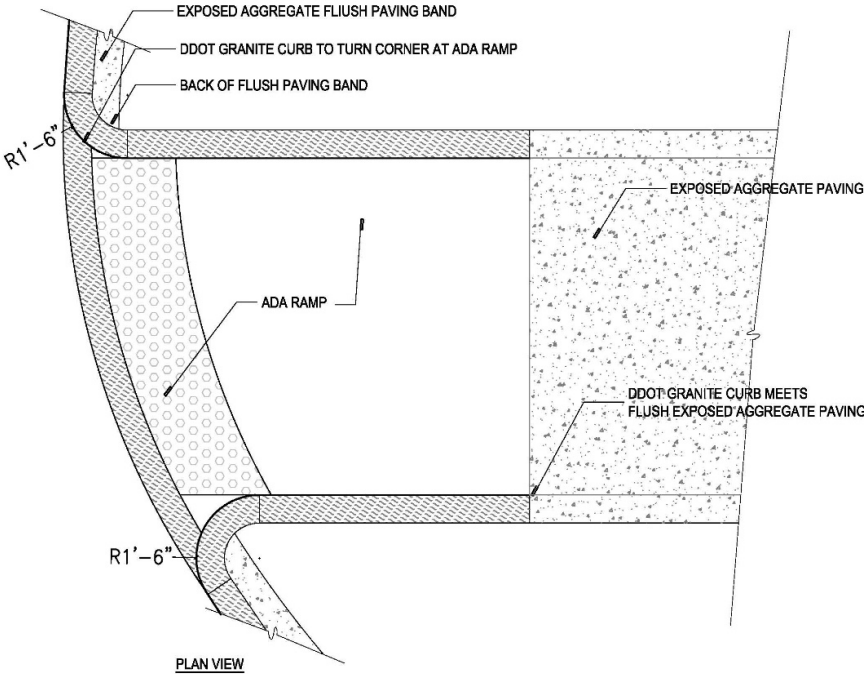


ADA Ramp Options Study

Option 1: Straight Ramp



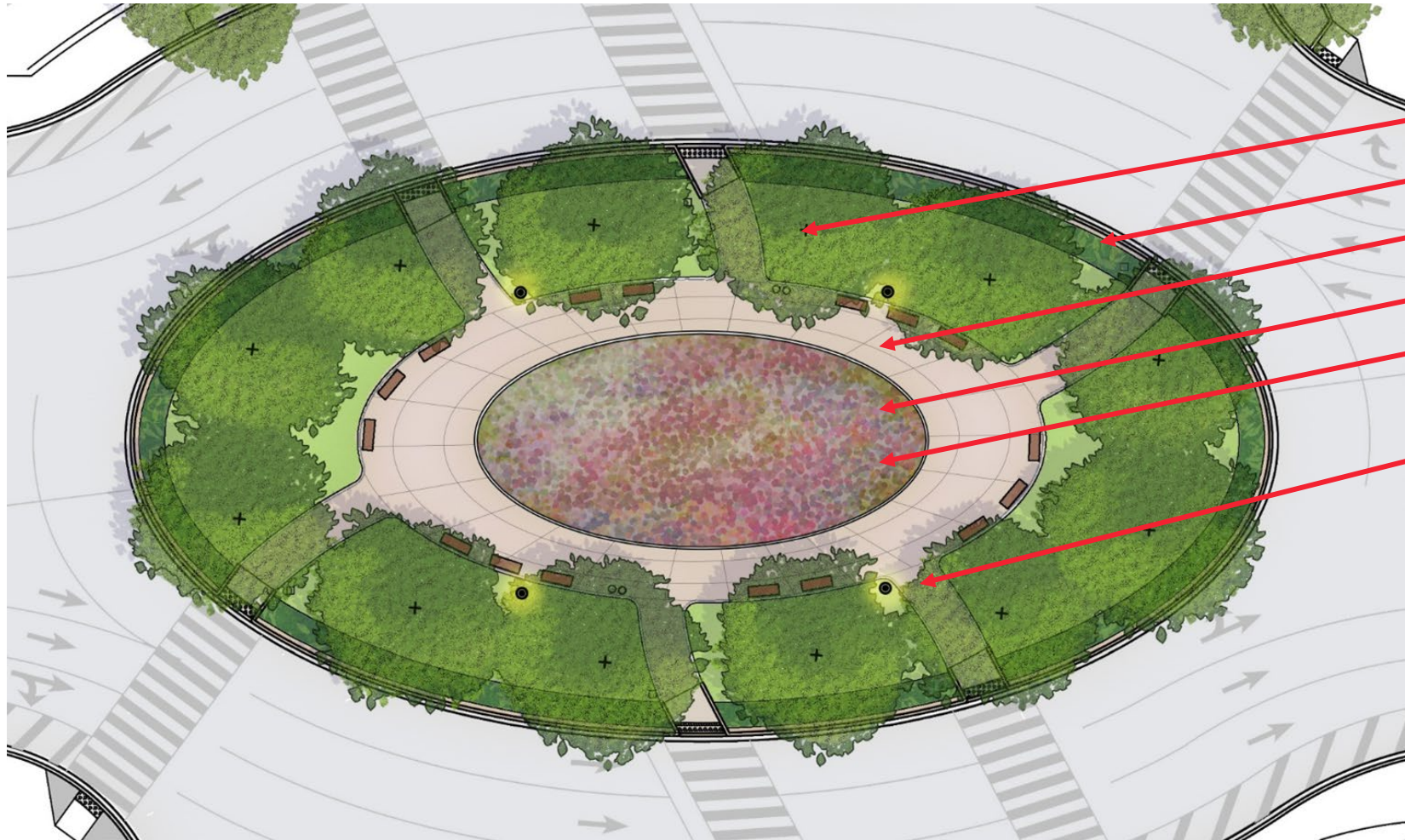
Option 2: Curb Flare Ramp



d.

*** WE ARE WASHINGTON *** GOVERNMENT OF THE DISTRICT OF COLUMBIA
MURIEL BOWSER, MAYOR

Final Design – Ellipse



Oak Tree

Double Row of Shrubs

Elliptical Path

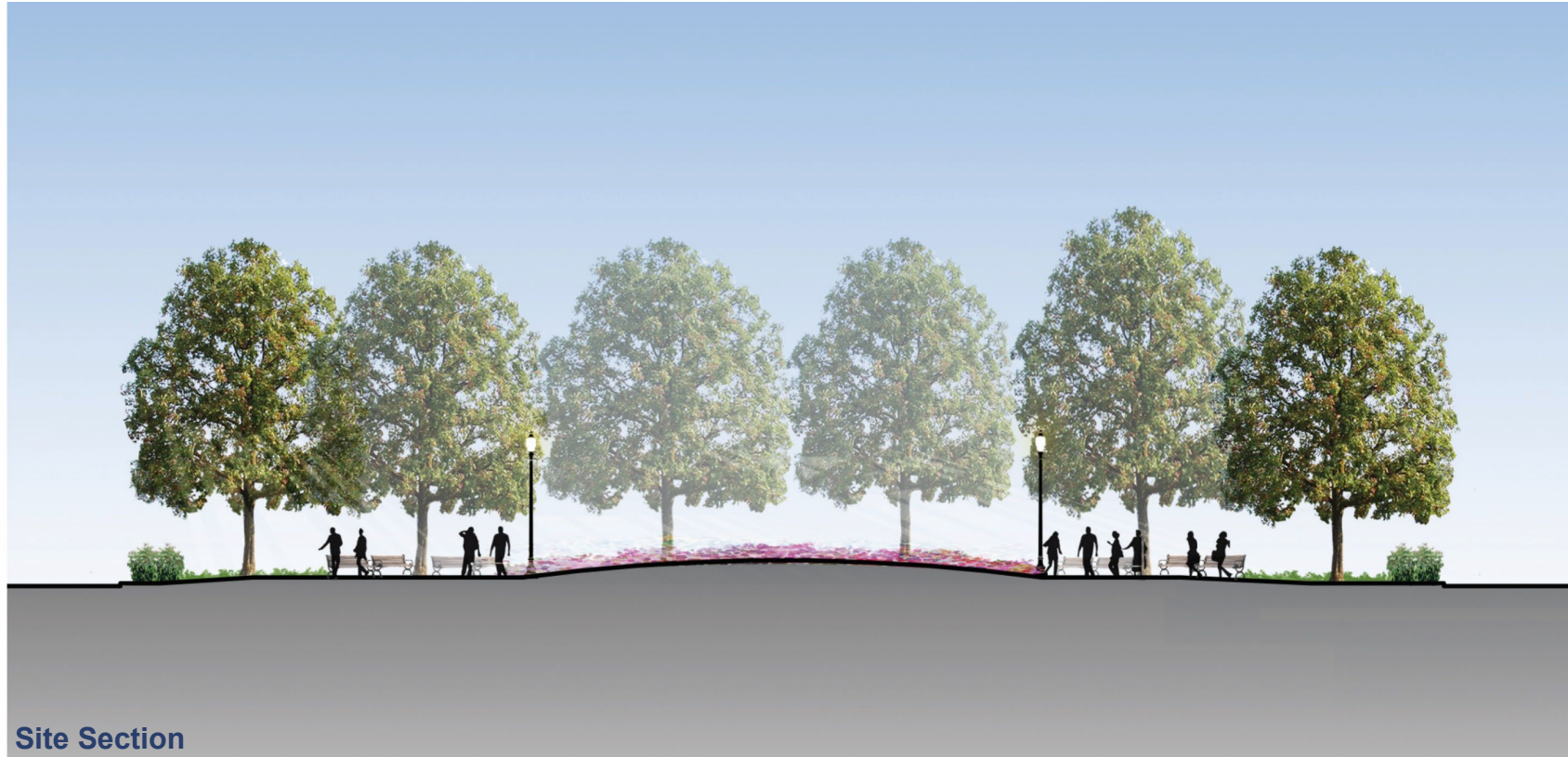
Planting Area

Potential Future Memorial Location

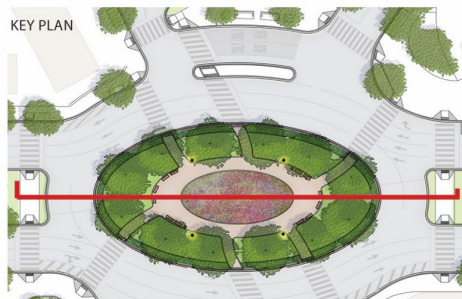
9' Wide Sidewalk (8' Wide path, 6" Flush Exposed Aggregate Concrete Band on Either Side)



Final Design – Ellipse



Site Section



Final Design – Ellipse



Bird's Eye Visualization View North East



d.

*** GOVERNMENT OF THE
DISTRICT OF COLUMBIA
MURIEL BOWSER, MAYOR

Final Design – Ellipse Materials

- NPS Standard Bench
- NPS Quarter-Round
Exposed Aggregate Curb
- NPS Standard
Trash/Recycling Receptacle
- NPS Standard Pedestrian
Light Pole
- 6" Flush Concrete Band
- ADA Accessible Ramp



d.

*** GOVERNMENT OF THE
DISTRICT OF COLUMBIA
MURIEL BOWSER, MAYOR

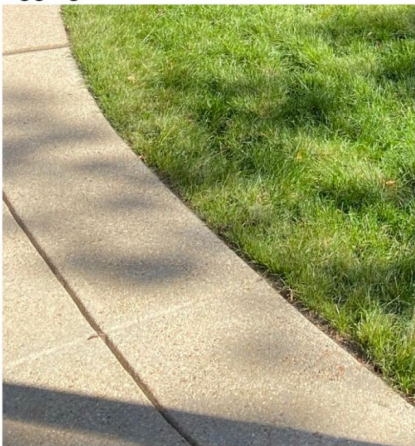
Hardscape Materials



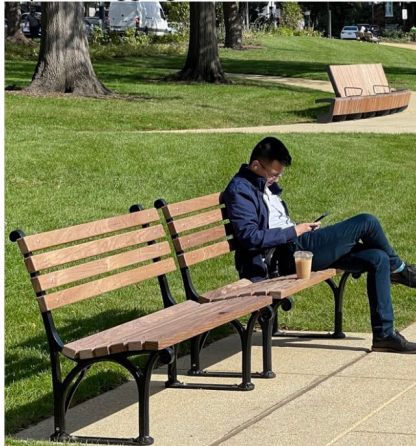
NPS Standard Exposed Aggregate Concrete



NPS Standard Quarter Round Curb, Exposed Aggregate Concrete



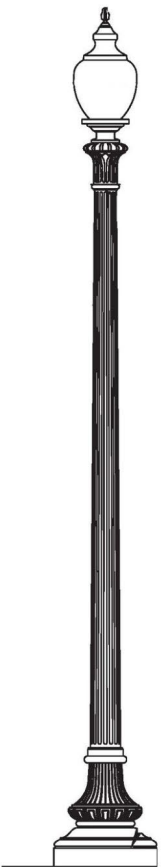
Flush Exposed Aggregate Concrete Band



NPS Standard Park Bench



Washington Globe Standard Streetlight



Washington Globe Standard Streetlight



d.

*** WE ARE WASHINGTON ***
GOVERNMENT OF THE
DISTRICT OF COLUMBIA
MURIEL BOWSER, MAYOR



District Department of Transportation



WE ARE
WASHINGTON
GOVERNMENT OF THE
DISTRICT OF COLUMBIA
DC MURIEL BOWSER, MAYOR