

---

# CEDAR HILL

## REGIONAL MEDICAL CENTER

---

GW HEALTH | WASHINGTON, DC

**ST. ELIZABETHS EAST**

COMMISSION OF FINE ARTS  
FINAL DESIGN SUBMISSION  
**PRESENTATION**

APRIL 21, 2022

 GOVERNMENT OF THE  
DISTRICT OF COLUMBIA  
MURIEL BOWSER, MAYOR

 **Turner**

 **MCN**  **McKISSACK**  
B U I L D M c K I S S A C K



# U.S. COMMISSION OF FINE ARTS

ESTABLISHED BY CONGRESS 17 MAY 1910

401 F STREET NW SUITE 312 WASHINGTON DC 20001-2728 202-504-2200 FAX 202-504-2195 WWW.CFA.GOV

22 September 2021

Dear Mr. Falcicchio:

In its public meeting of 15 September conducted by videoconference, the Commission of Fine Arts reviewed a revised concept submission for a new hospital building and parking garage to be located on Parcel 2 along Pecan Street on the St. Elizabeths East Campus. The Commission approved the proposal and provided the following comments for development of the final design.

The Commission members expressed appreciation for the responsiveness to their previous recommendations for the architectural and site design. They commented that the revised exterior color for the building's base has resulted in an improved sense of grounding and unity for the large building complex. They recommended using a planted treatment for the flat roof areas that would be visible from patient rooms and other occupied spaces, with particular attention to the roof between the bed tower and the ambulatory care center.

For the design of the site, the Commission members acknowledged the development of a more detailed landscape proposal that includes an emphasis on public open spaces. They urged further development of the large, prominently visible open space to the west along Martin Luther King, Jr. Avenue, encouraging a more engaging character of the landscape across the site using elements such as plantings, tables, benches, and walks. They observed that this landscape should be an inviting amenity for visitors, patients, and staff—designed to provide respite and a welcoming place to eat outdoors, with minimal visual or physical barriers. They suggested enlarging upon the strong concept for creating mounds and swales to add interest to the open space, while supporting the consideration of maintenance requirements and adequate sightlines for safety; for example, plantings could be selected to attract birds and butterflies in order to strengthen the landscape's healing character.

More generally, the Commission members commended the improvement of the landscape design at the north edge of the hospital building and around the adjacent parking garage, endorsing the project's relationship with the men's shelter to the north and the wooded ravine to the east. They encouraged further consideration of how the site design could strengthen the relationship between the hospital and the extensive redevelopment that is planned to the south, particularly the continuity of pedestrian circulation patterns, in order to contribute to the long-term goal of developing a cohesive mixed-use neighborhood for the St. Elizabeths East Campus.

The Commission looks forward to further review of this important community facility; please coordinate the final design submission with the staff which, as always, is available to assist you.

Sincerely,



Thomas E. Luebke, FAIA  
Secretary

John Falcicchio  
Deputy Mayor for Planning and Economic Development  
1350 Pennsylvania Avenue, NW, Suite 317  
Washington, DC 20004

cc: William Hellmuth, HOK  
Don Hoover, Oculus

## DESIGN RESPONSE UPDATES

22 SEPTEMBER 2021

- **ENGAGING CHARACTER OF THE LANDSCAPE WITH ENHANCED SITE ELEMENTS**  
(PLANTINGS, TABLES, BENCHES, WALKS)
- **ADDED INTEREST TO OPEN SPACE**  
ENHANCEMENT OF MOUNDS IN LANDSCAPE
- **CONTINUED CIRCULATION CONNECTIONS**  
BETWEEN HOSPITAL AND SOUTH CAMPUS  
REDEVELOPMENT MASTERPLAN.
- **CONSIDERED PLANTED TREATMENT**  
ROOF AREAS VISIBLE TO PATIENT ROOMS





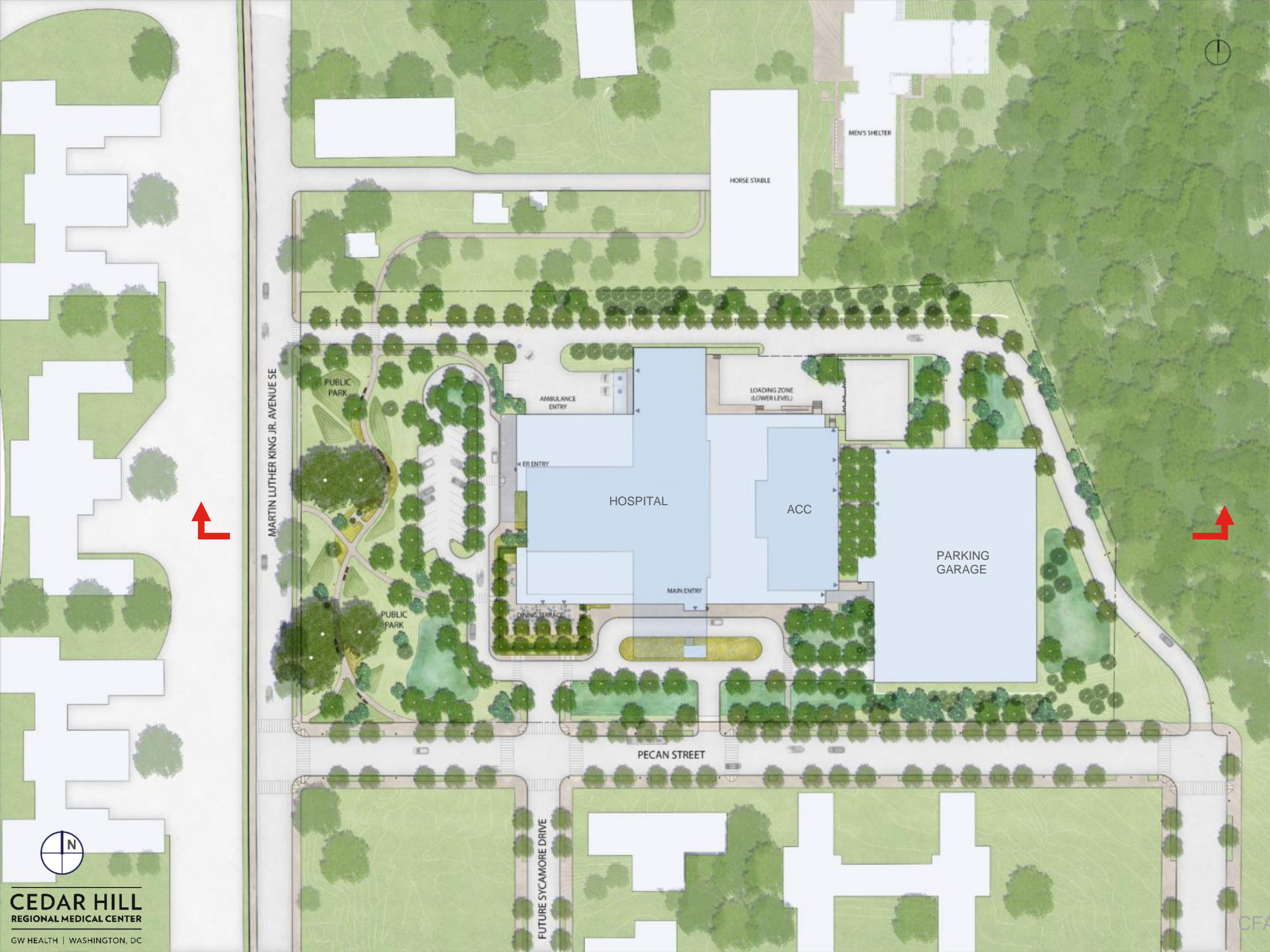
# EXISTING CONTEXT



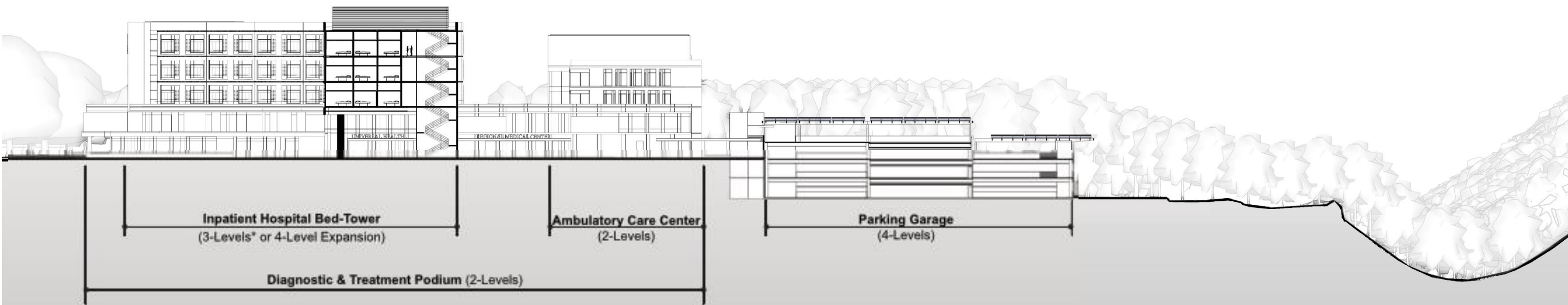




PECAN STREET -  
FUTURE CONDITION















8

# DEVELOPMENTS

## CFA STAFF & UHS FEEDBACK





**UPDATED**

**ELEVATION - PECAN ST. SE**









**DEVELOPMENTS**  
CFA STAFF & UHS FEEDBACK





CEDAR HILL  
GW HEALTH

EMERGENCY

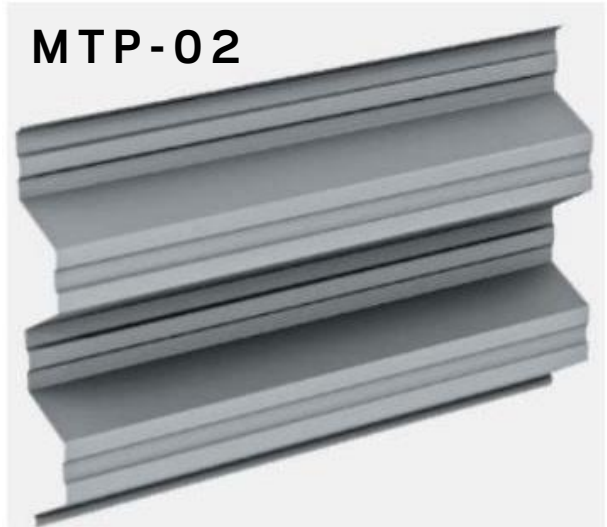
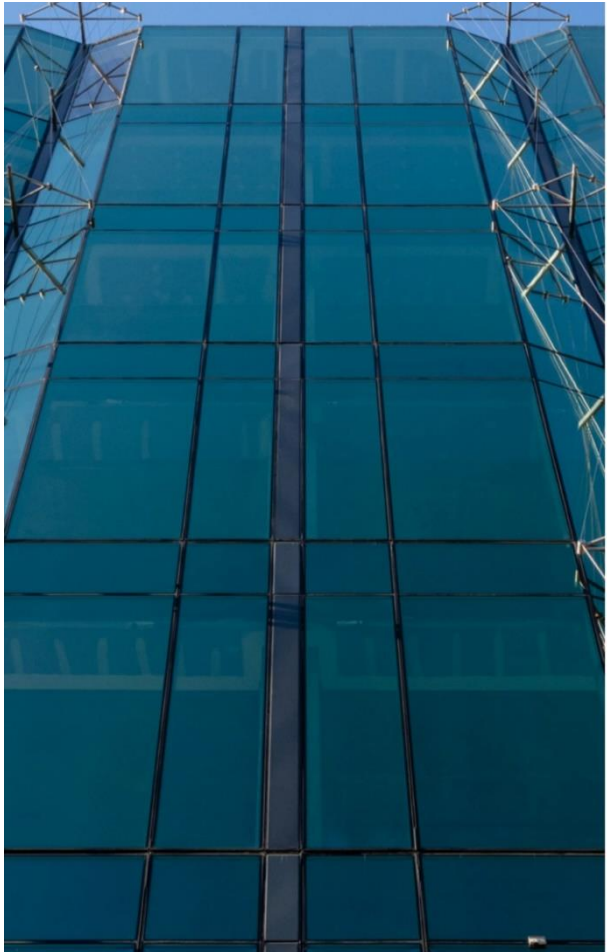
UPDATED

ELEVATION - MLK JR AVE SE - 4 LEVELS









MTP-02







15





(EXISTING WOODLAND)





(EXISTING WOODLAND)



























---

# CEDAR HILL

## REGIONAL MEDICAL CENTER

---

GW HEALTH | WASHINGTON, DC  
**ST. ELIZABETHS EAST**

SIGNAGE PACKAGE

APRIL 21, 2022

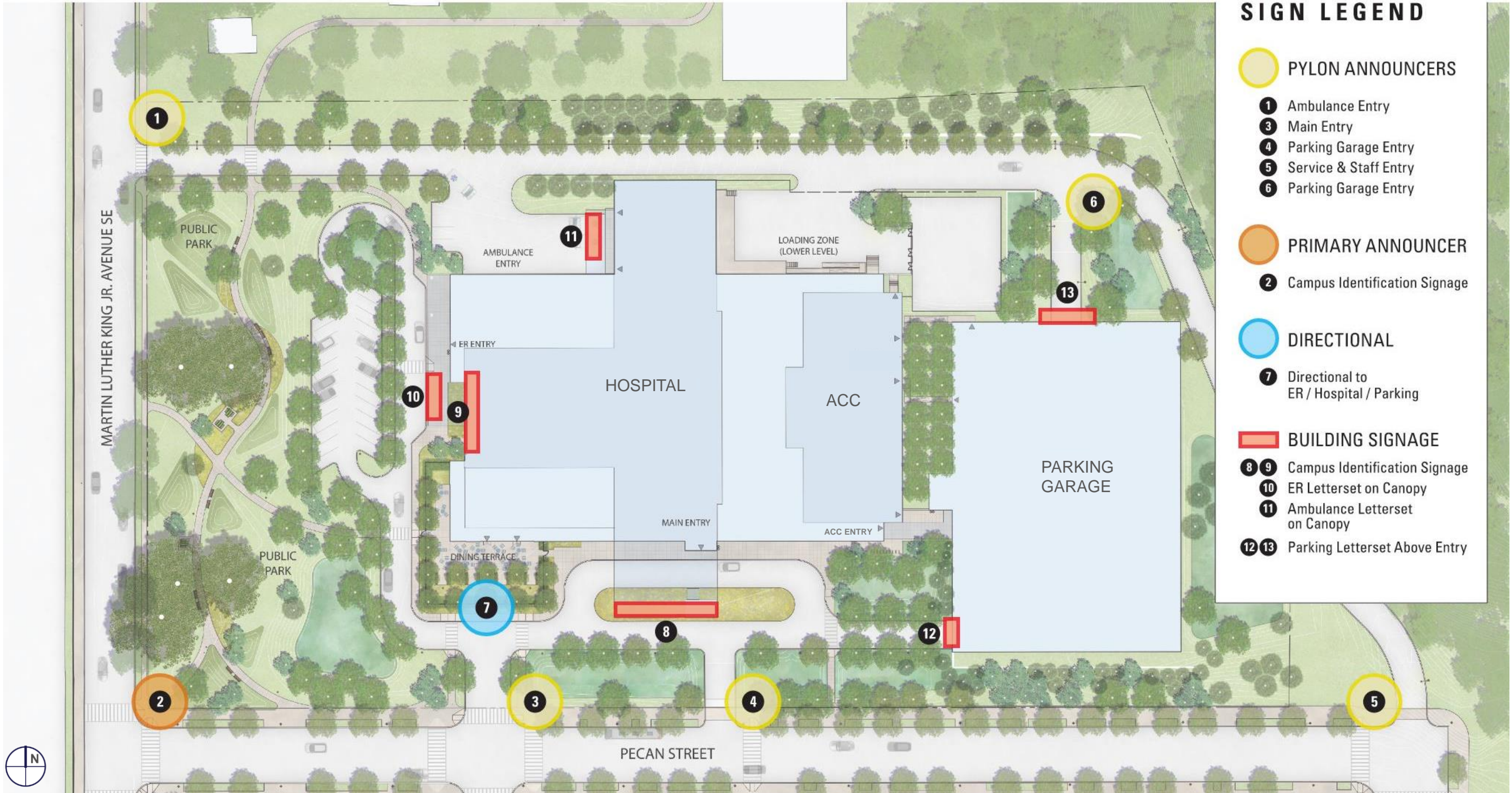
 GOVERNMENT OF THE  
DISTRICT OF COLUMBIA  
MURIEL BOWSER, MAYOR

 **Turner**

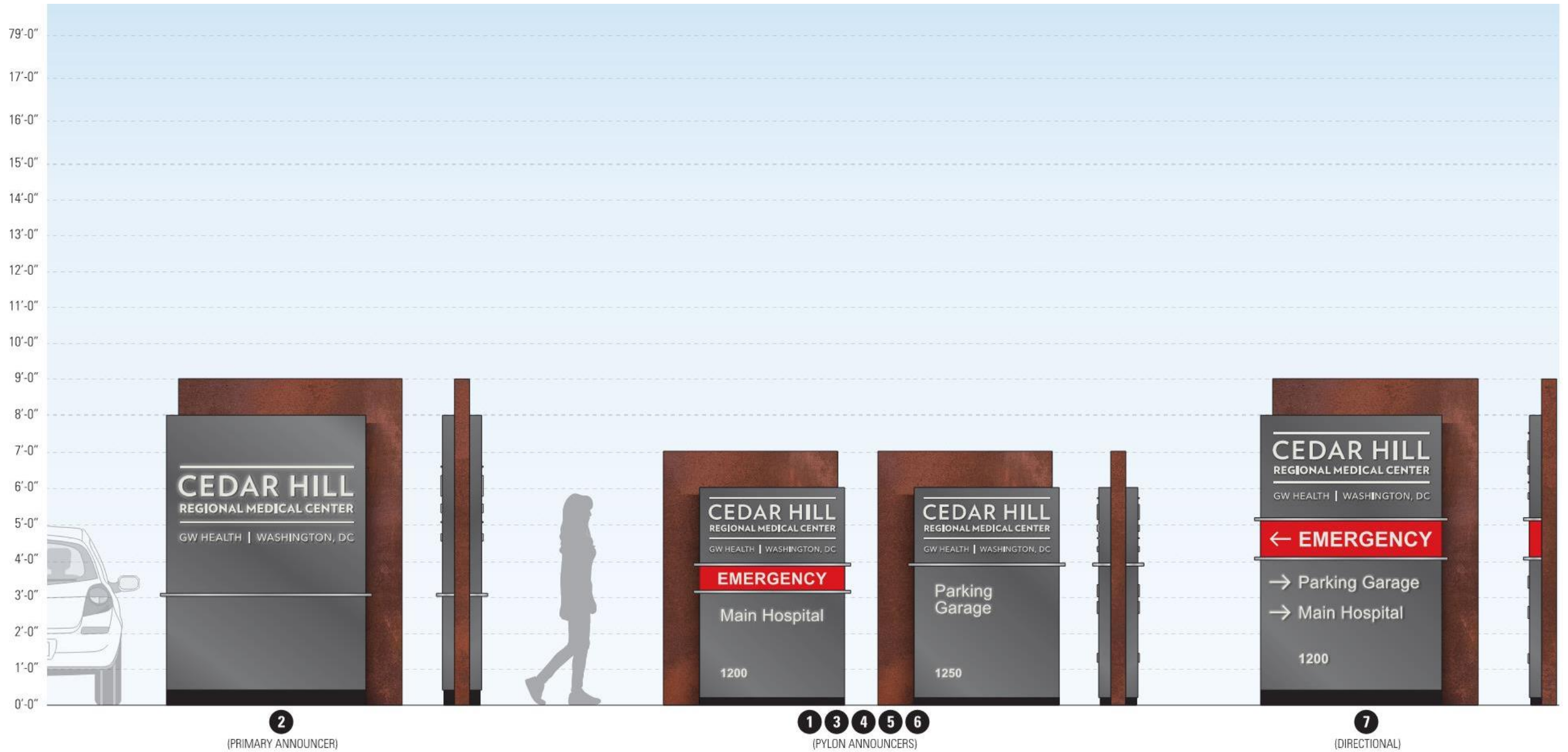
 **MCN**  **McKISSACK**









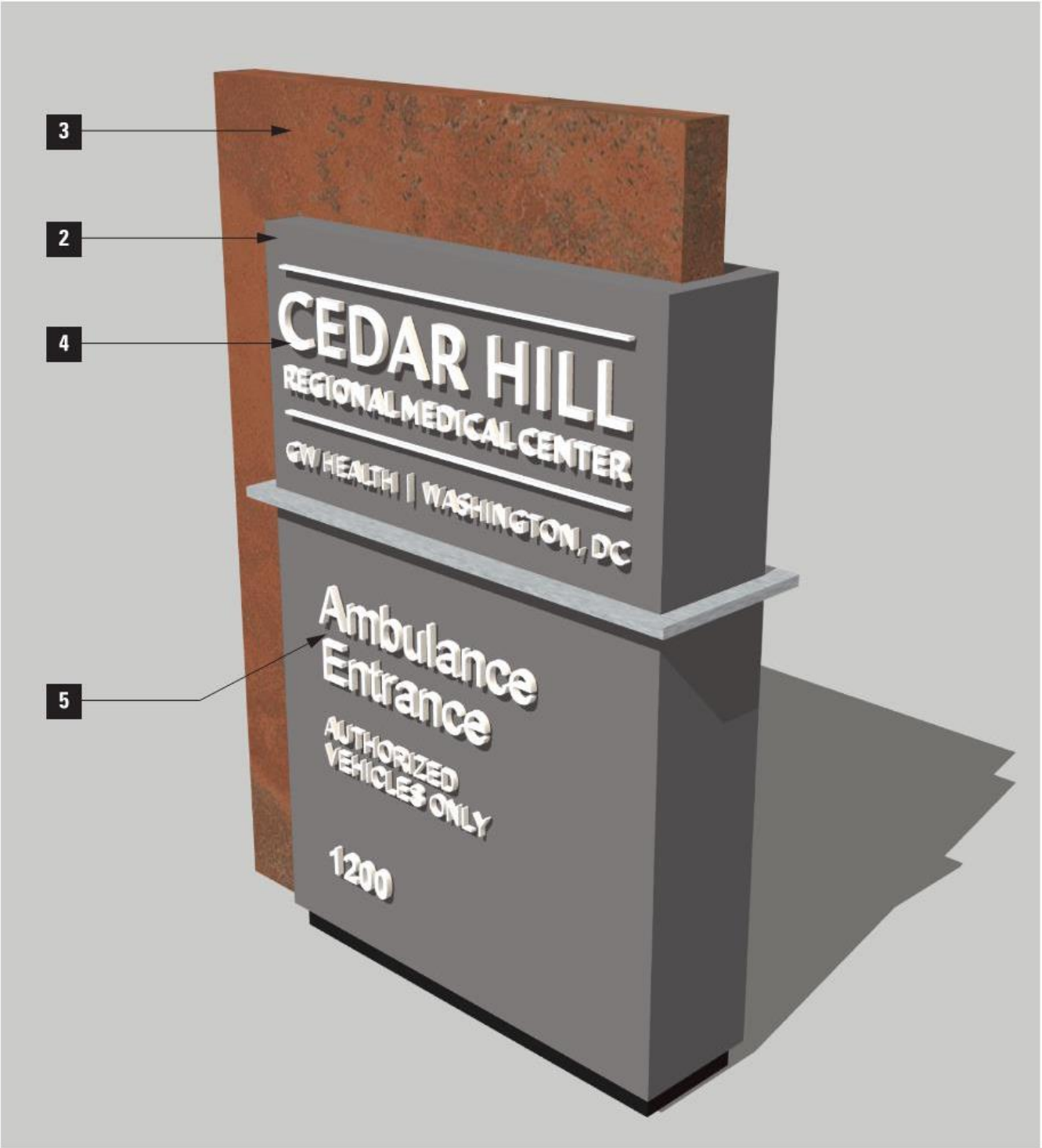


**A** SCHEDULE OF SIGNS  
SCALE: 3/8"=1'-0"



**PYLON ANNOUNCER SIGN**

- 1. OVERALL DIMENSION: 5'W X 7'H
- 2. ALUMINUM CABINET
- 3. WEATHERED STEEL CABINET
- 4. PUSH-THRU ACRYLIC LOGO (EDGE LIT WITH OPAQUE FACE)
- 5. PUSH-THRU ACRYLIC MESSAGES (EDGE LIT WITH OPAQUE FACE)
- 6. DOUBLE-SIDED
- 7. GROUND MOUNTED
- 8. EXTERNAL FRONT SPOTLIGHT ON BOTH SIDES





### PRIMARY ANNOUNCER

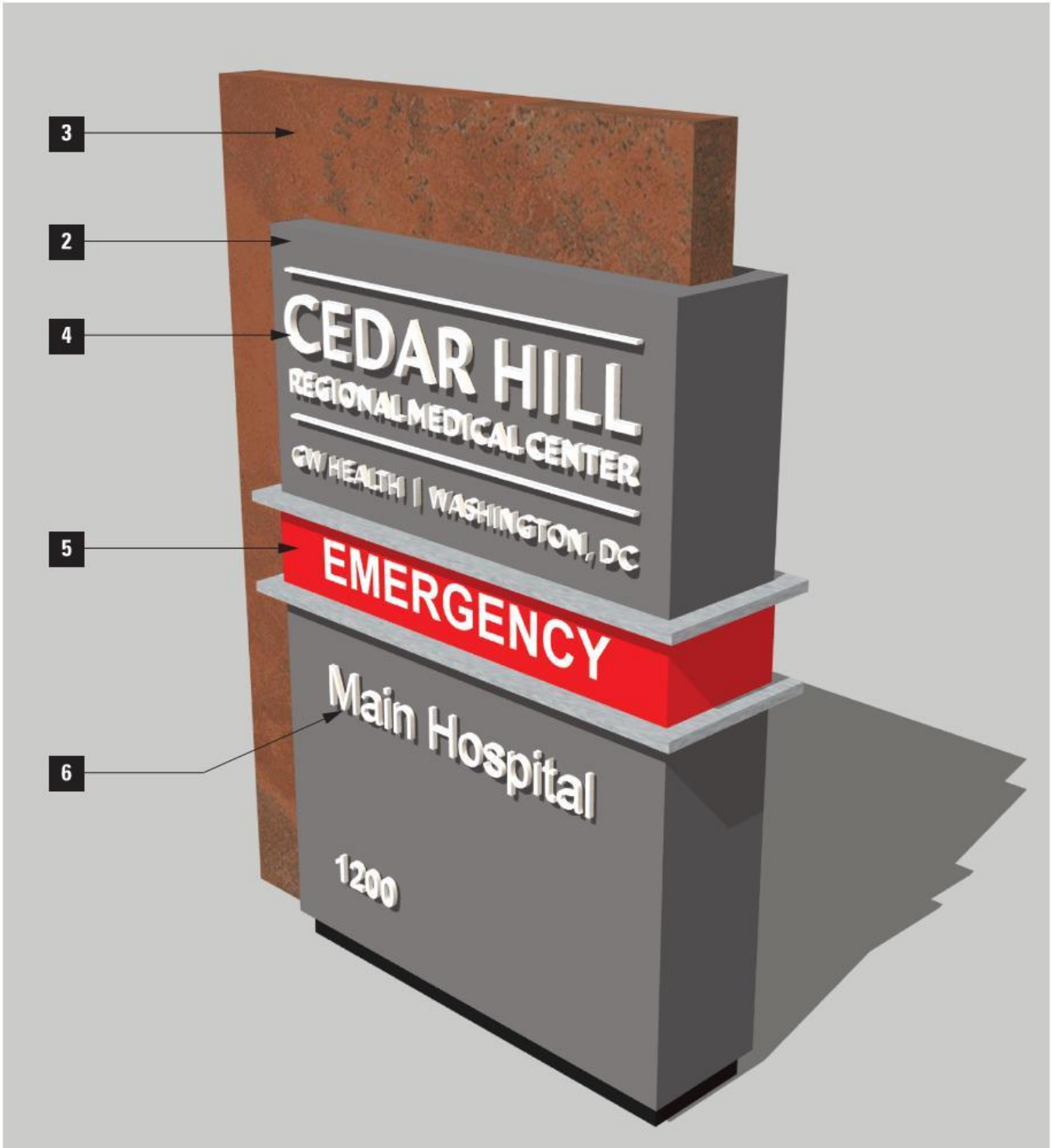
1. OVERALL DIMENSION: 6'-6"W X 9'H
2. ALUMINUM CABINET
3. WEATHERED STEEL CABINET
4. PUSH-THRU ACRYLIC LOGO (EDGE LIT WITH OPAQUE FACE)
5. DOUBLE-SIDED
6. GROUND MOUNTED
7. EXTERNAL FRONT SPOTLIGHT ON BOTH SIDES





**DIRECTIONAL SIGN**

- 1. OVERALL DIMENSION: 5'W X 7'H
- 2. ALUMINUM CABINET
- 3. WEATHERED STEEL CABINET
- 4. PUSH-THRU ACRYLIC LOGO (EDGE LIT WITH OPAQUE FACE)
- 5. EMERGENCY PANEL (FACE LIT PANEL)
- 6. PUSH-THRU ACRYLIC MESSAGES (EDGE LIT WITH OPAQUE FACE)
- 7. DOUBLE-SIDED
- 8. GROUND MOUNTED
- 9. EXTERNAL FRONT SPOTLIGHT ON BOTH SIDES





## EDGE LIT





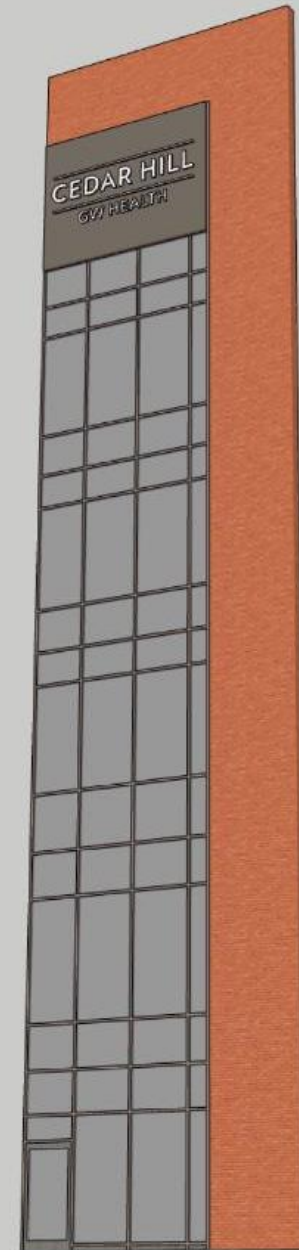


#### UHS BRAND ON GLAZING

- **LOGO BACKER:** 17'W X 11'9"H
- **LOGO LINE 1:** 16'3"W X 1'11"H
- **LOGO LINE 2:** 10'W X 1'2"H
- 5" DEEP PAINTED ALUMINUM CHANNEL LETTERS MOUNTED TO BACKER WITH 1" FLOAT
- 4" DEEP PAINTED ALUMINUM BACKER MOUNTED 3" OFF GLAZING MULLIONS

#### LIGHTING

1. HALO LIT CHANNEL LETTERS







#### HALO LIT LETTERS ON BACKER

1. ALUMINUM CHANNEL LETTERS MOUNTED TO ALUMINUM BACKER
2. LIGHT GLOWS WHITE BEHIND LETTERS
3. BACKER MOUNTED TO MULLIONS





**FACE LIT RED**

- 1. ALUMINUM CHANNEL LETTERS MOUNTED FLUSH TO CANOPY FASCIA
- 2. TRANSLUCENT ACRYLIC LENS CAP FACE LIT RED





**PLAN VIEW**

- MAIN ENTRY LETTERSET ATOP CANOPY**
- 62'4"W X 1'6"H
  - POLISHED ALUMINUM CHANNEL LETTERS
  - EXTERNAL ILLUMINATION
  - MOUNTED ATOP CANOPY STRUCTURE



**PERSPECTIVE VIEW**



# CEDAR HILL

## REGIONAL MEDICAL CENTER

GW HEALTH | WASHINGTON, DC  
**ST. ELIZABETHS EAST**

LANDSCAPE UPDATES

APRIL 21, 2022

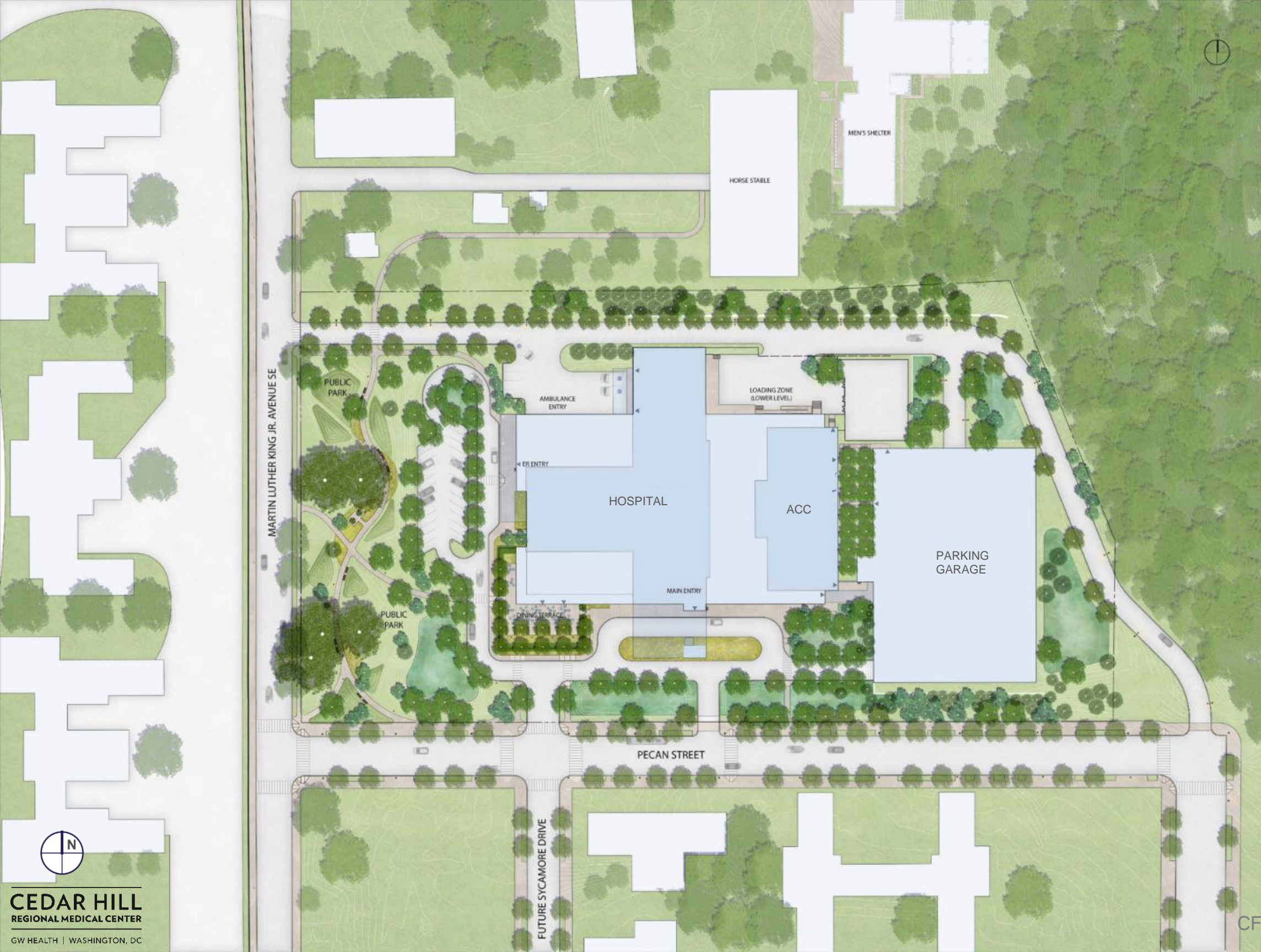
 GOVERNMENT OF THE  
DISTRICT OF COLUMBIA  
MURIEL BOWSER, MAYOR

 **Turner**

 **MCN**  **McKISSACK**

 **h+k**





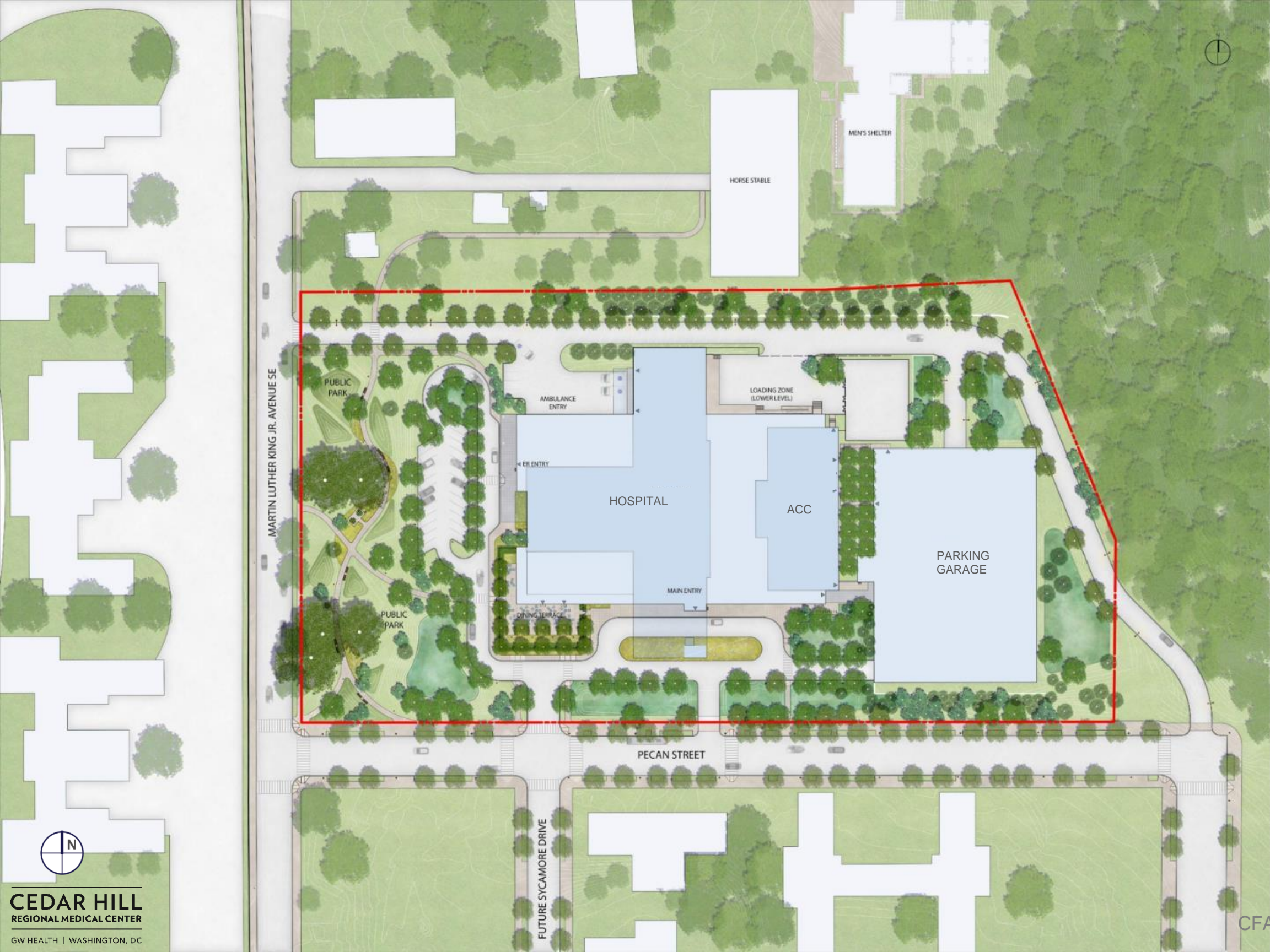
## Key Design Considerations

- Support Hospital Functions
- 'Be a Good Neighbor'
- Aesthetic Quality
- Environmental Responsibility
- Public Safety
- Management & Maintenance
- North-South Pedestrian Connection



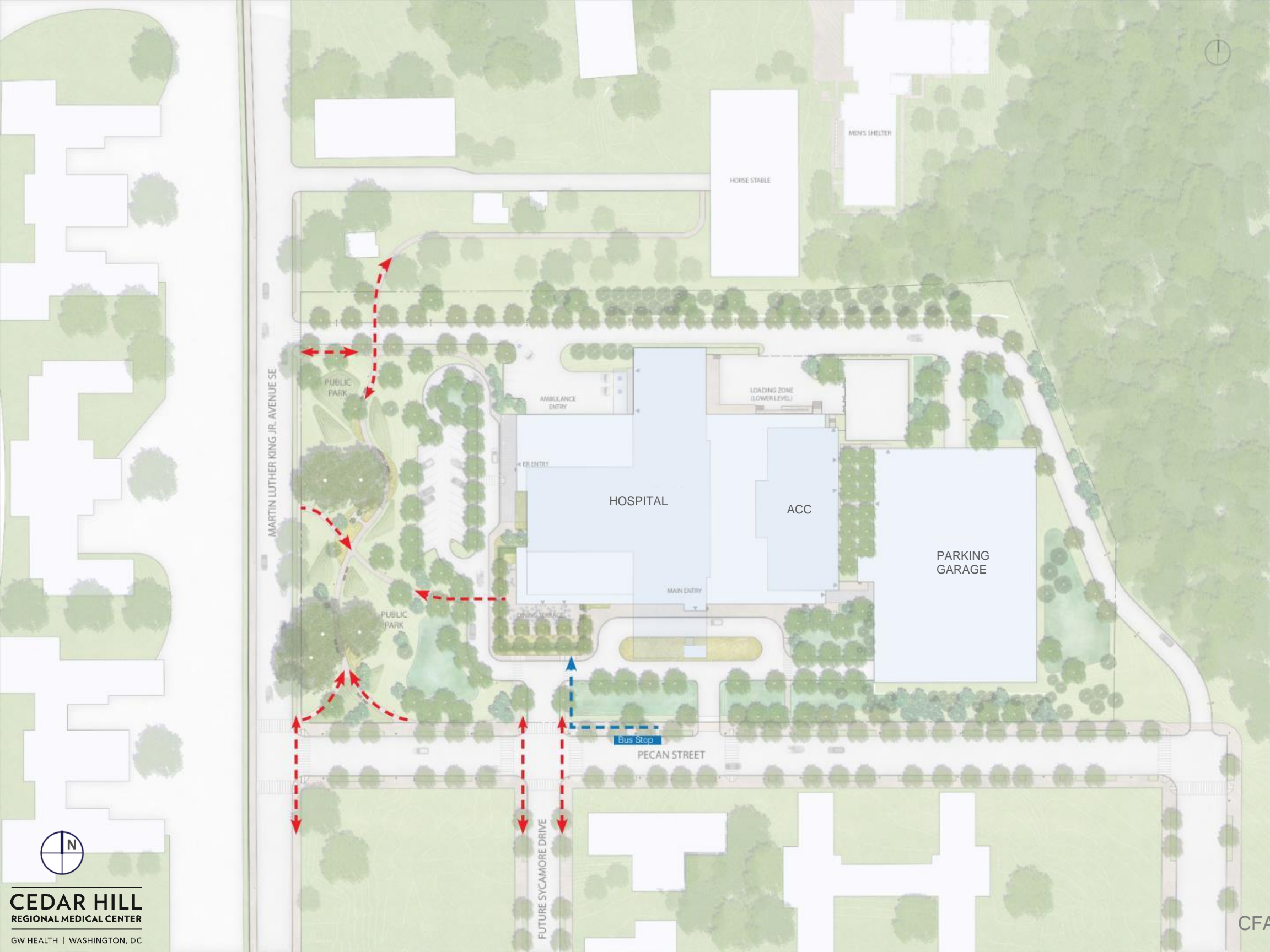


Scope of Project Limits





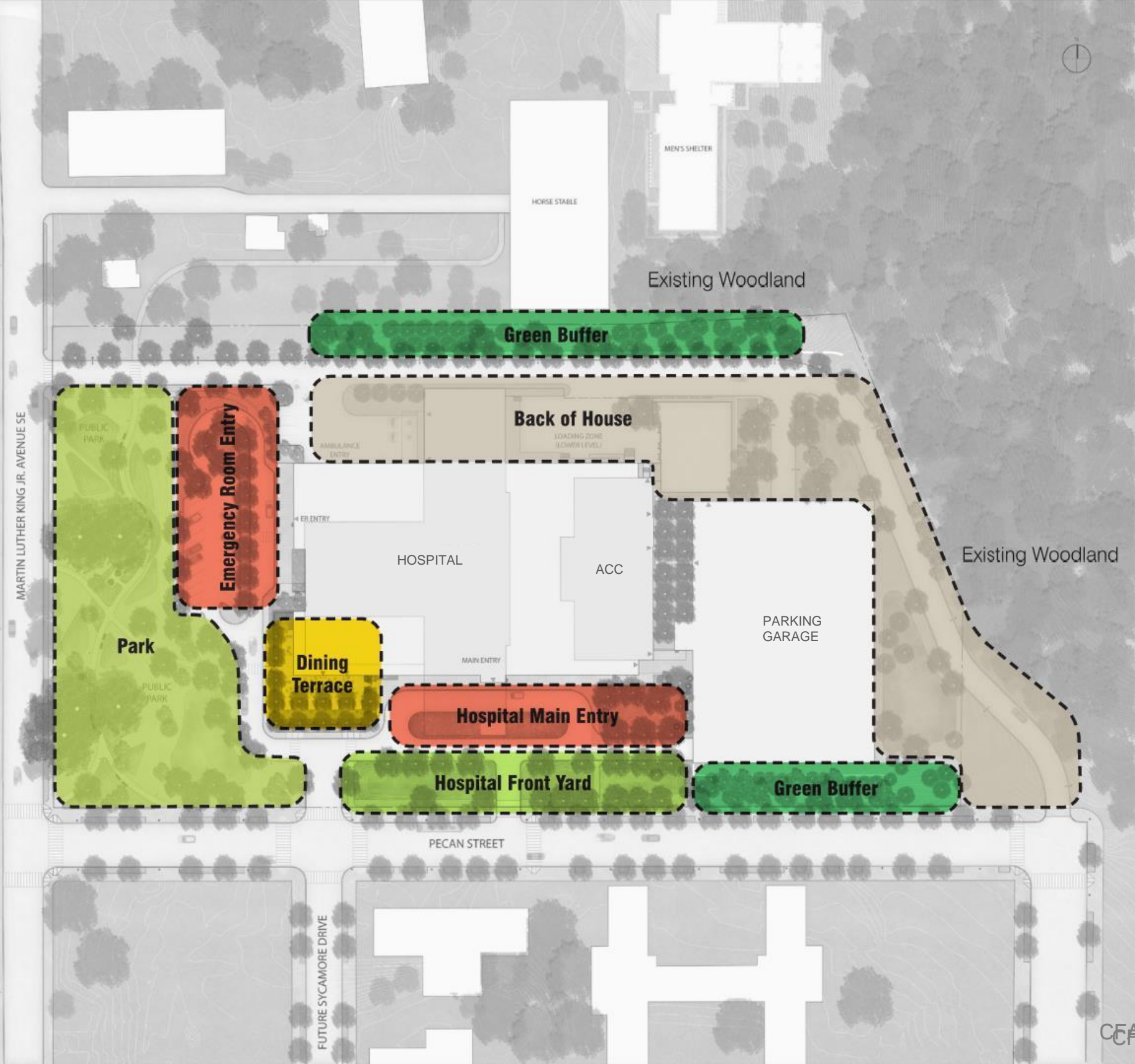
Pedestrian Links



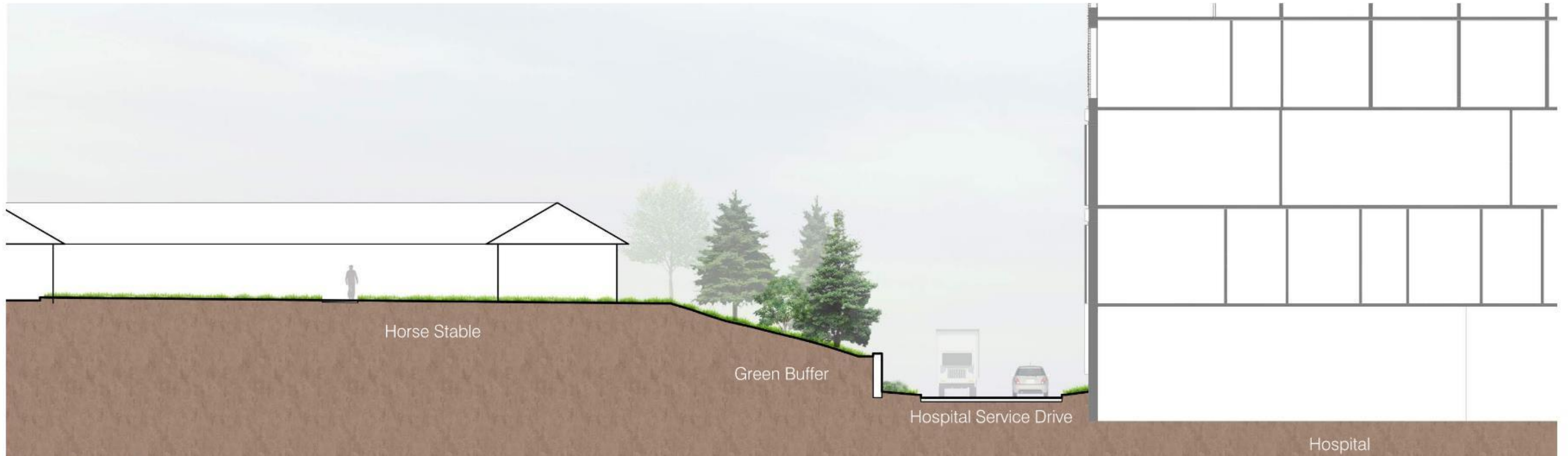
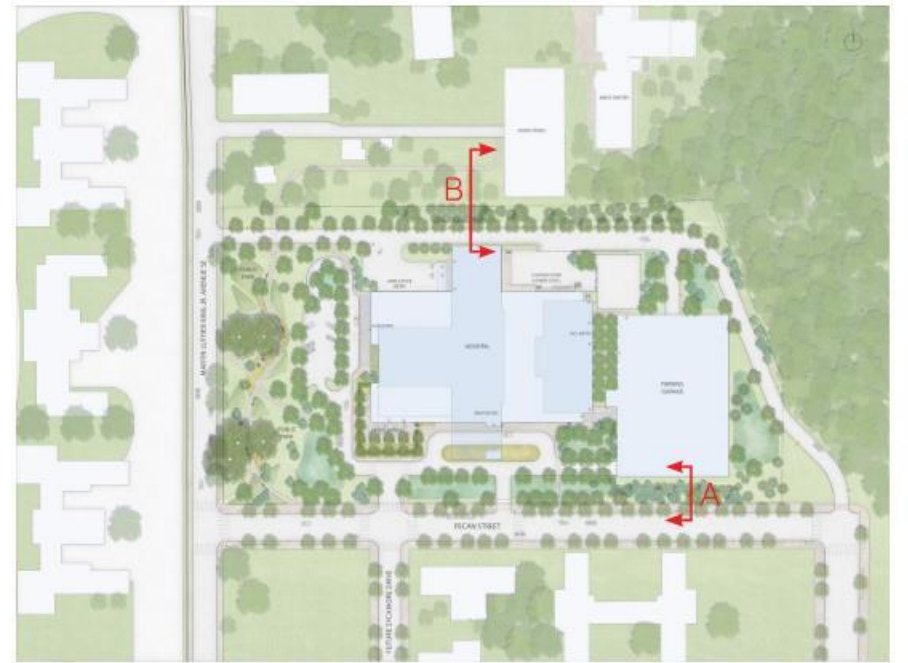


# Landscape Zones

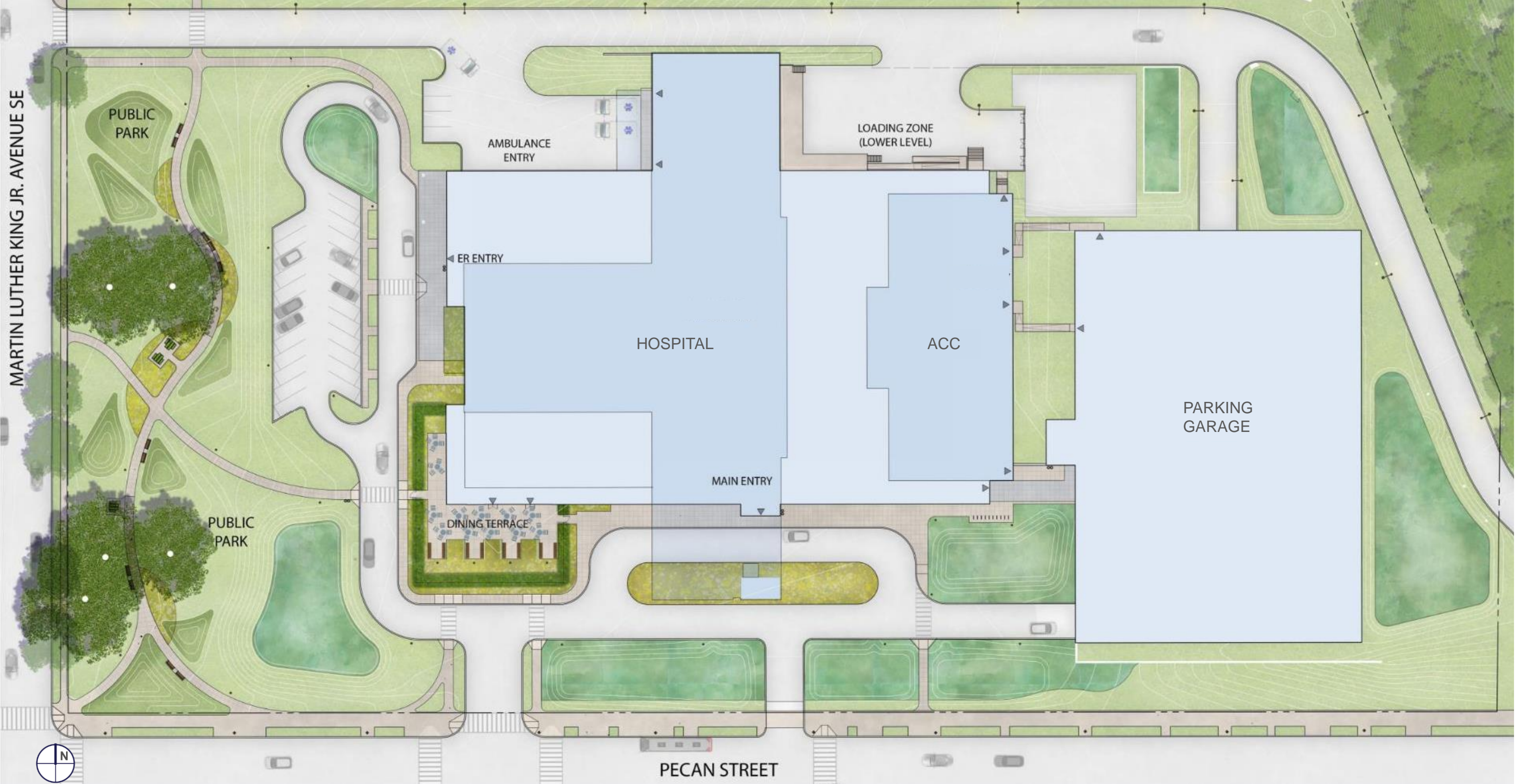
- Hospital Main Entry
- Park
- Emergency Room
- Cafeteria Dining Terrace
- Back-of-House
- Green Buffer





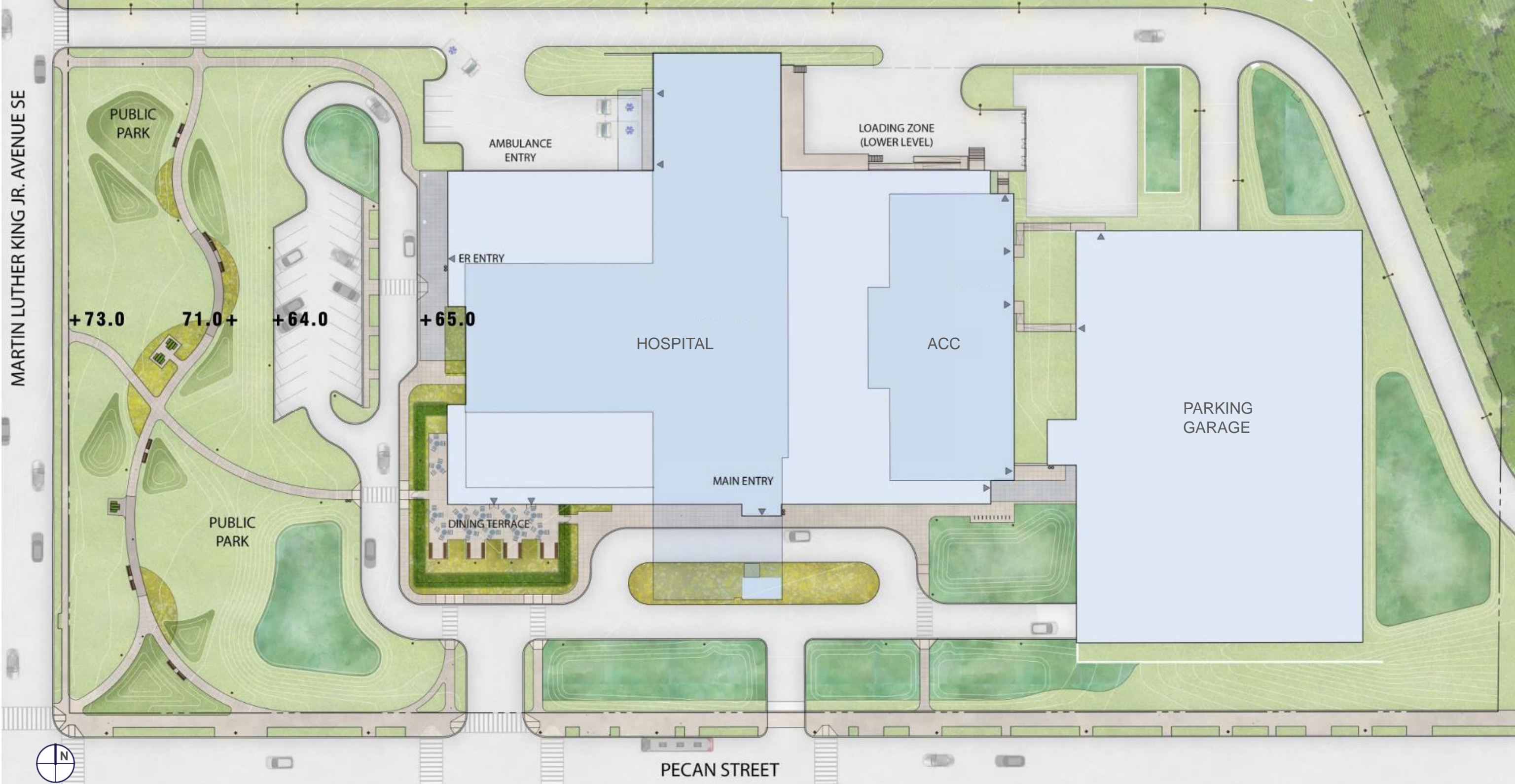








MARTIN LUTHER KING JR. AVENUE SE

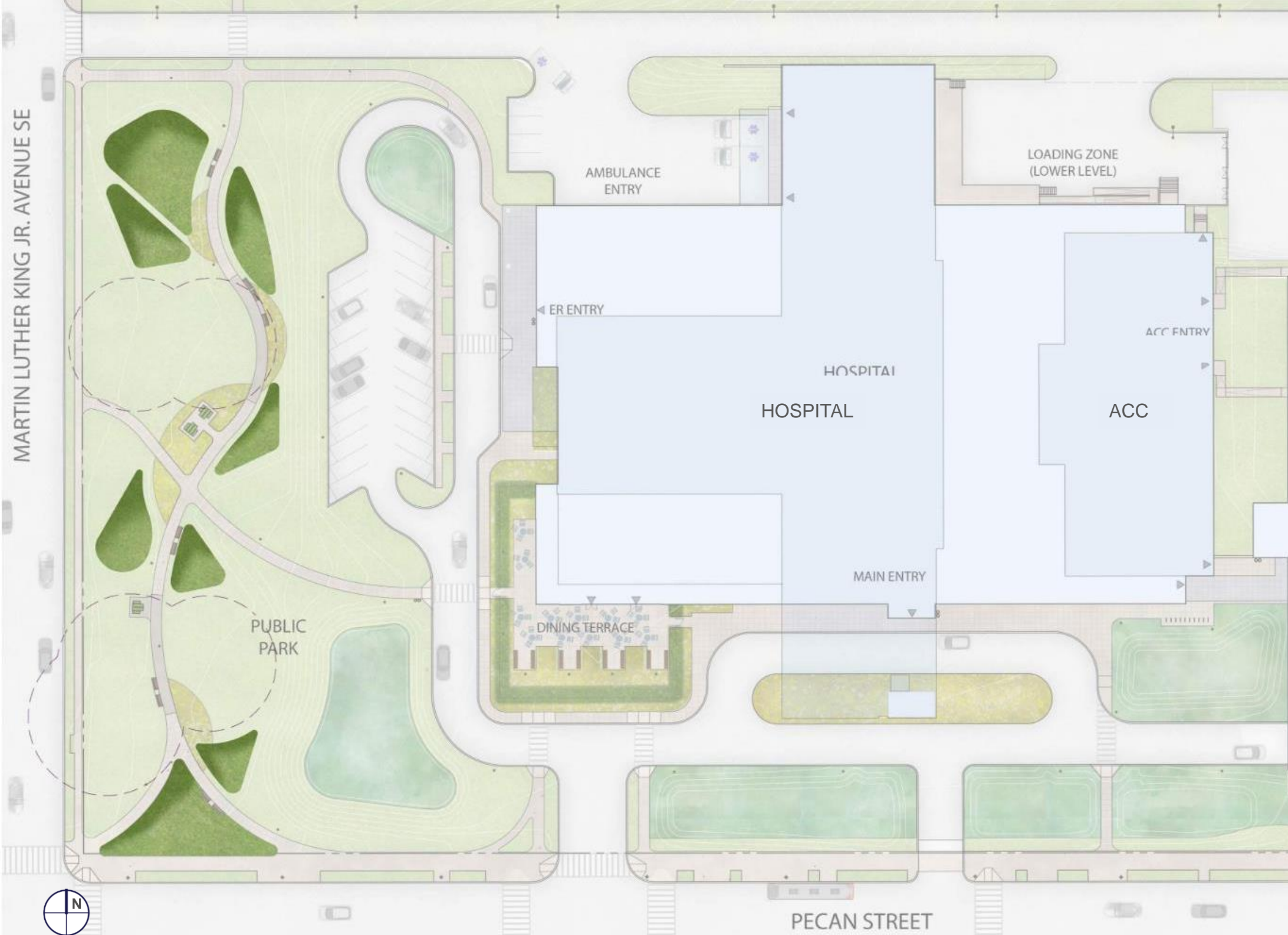






**Park Section**









# TREE PLANTINGS



Evergreen Trees



Holly



White Pine



Sweetbay  
Magnolia

Canopy Trees



Red Maples



Oaks



Sweet Gum



London Plane Tree



Kentucky Coffeetree

Mid-story Trees



Black Gum



Honey Locust



Bald Cypress



Yellowwood



Ginkgo

Understory Trees



Serviceberry



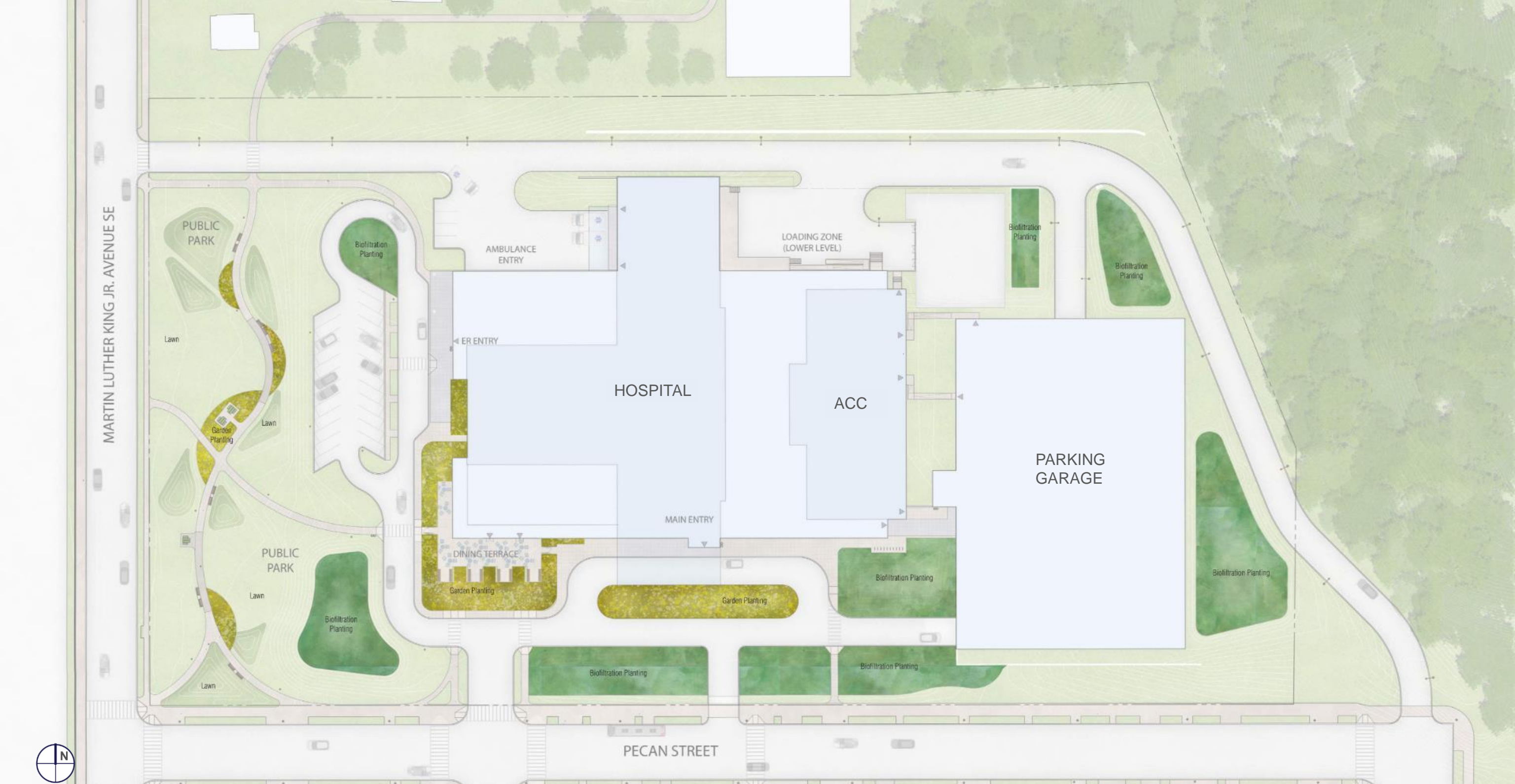
Hop Hornbeam



Redbud

Note: Illustrated species show current design intent. Substitutions may be made pending species availability, project conditions, and further design development.







Shrubs



Dwarf Fothergilla



Inkberry Holly



'Frau Dagmar Hastrup' Rose



Ornamental Grasses



Blue Green Sedge



Prairie Dropseed



Cherokee Sedge

Perennials



Blue Star



False Indigo



Blue False Indigo



Purple Coneflower



Green Jewel Coneflower



Foam Flower

Note: Illustrated species show current design intent. Substitutions may be made pending species availability, project conditions, and further design development.



Shrubs



Bottlebrush Buckeye



Winterberry



Arrowwood Viburnum



Ornamental Grasses



Karl Foerster Reed Grass



Tufted Hair Grass



Switchgrass



Little Bluestem



Prairie Dropseed

Perennials



Joe Pye Weed



Black Eyed Susan

Note: Illustrated species show current design intent. Substitutions may be made pending species availability, project conditions, and further design development.





### Picnic Tables

Manufacturer: Landscape Forms  
Type: Take-Out Triple  
Finish: Steel Powdercoat Grass Green



### Park Bench

Manufacturer: Landscape Forms  
Type: Plainwell Bench, 72" w/ Center Arms  
Finish: Wood Slats, Aluminum Powdercoat Black



### Bike Racks

Manufacturer: Landscape Forms  
Type: Bola Bike Rack  
Finish: Stainless Steel, Embedded



### Trash & Recycling Receptacles

Manufacturer: Forms + Surfaces  
Type: Universal Litter & Recycling Receptacle, 24 gal., Standard Side Opening, Round Side Opening (Recycling)  
Finish: Stainless Steel, Satin, Recycling Graphic





HOSPITAL

CAFÉ –  
DINING

Cafe Table  
and Chairs

Bench

CFA FINAL DESIGN

REVIEW | 2022-04-20 51



### Dining Table

Manufacturer: Landscape Forms  
Type: Catena Base Marneaux 36" square Table  
Finish: Base - Silver Powercoat, Top - Celery



### Dining Chair

Manufacturer: Landscape Forms  
Type: Verona Chair w/ metal grid  
Finish: Silver Powercoat



### Terrace Bench

Manufacturer: Landscape Forms  
Type: Neoliviano Bench, 118", armed and backed  
Finish: Thermally Modified Ash, Aluminum



### Trash & Recycling Receptacles

Manufacturer: Forms + Surfaces  
Type: Universal Litter & Recycling Receptacle, 24 gal.,  
Standard Side Opening, Round Side Opening (Recycling)  
Finish: Stainless Steel, Satin, Recycling Graphic



### Café Fence and Gate

Manufacturer: Omega Fence Systems  
Type: Elite Double Wire 4' fence and single swing gate  
Finish: Signal Black





### Park Light

Manufacturer: N/A

Type: DC Standard Washington Globe #16

Finish: Match adjacent Pecan Street Lighting



### Pedestrian Light

Manufacturer: Ligman Lighting

Type: Vancouver Column

Finish: Black



### Roadway Light

Manufacturer: Ligman Lighting

Type: Steamer Streetlight & Area Light, square, 18' pole

Finish: Black















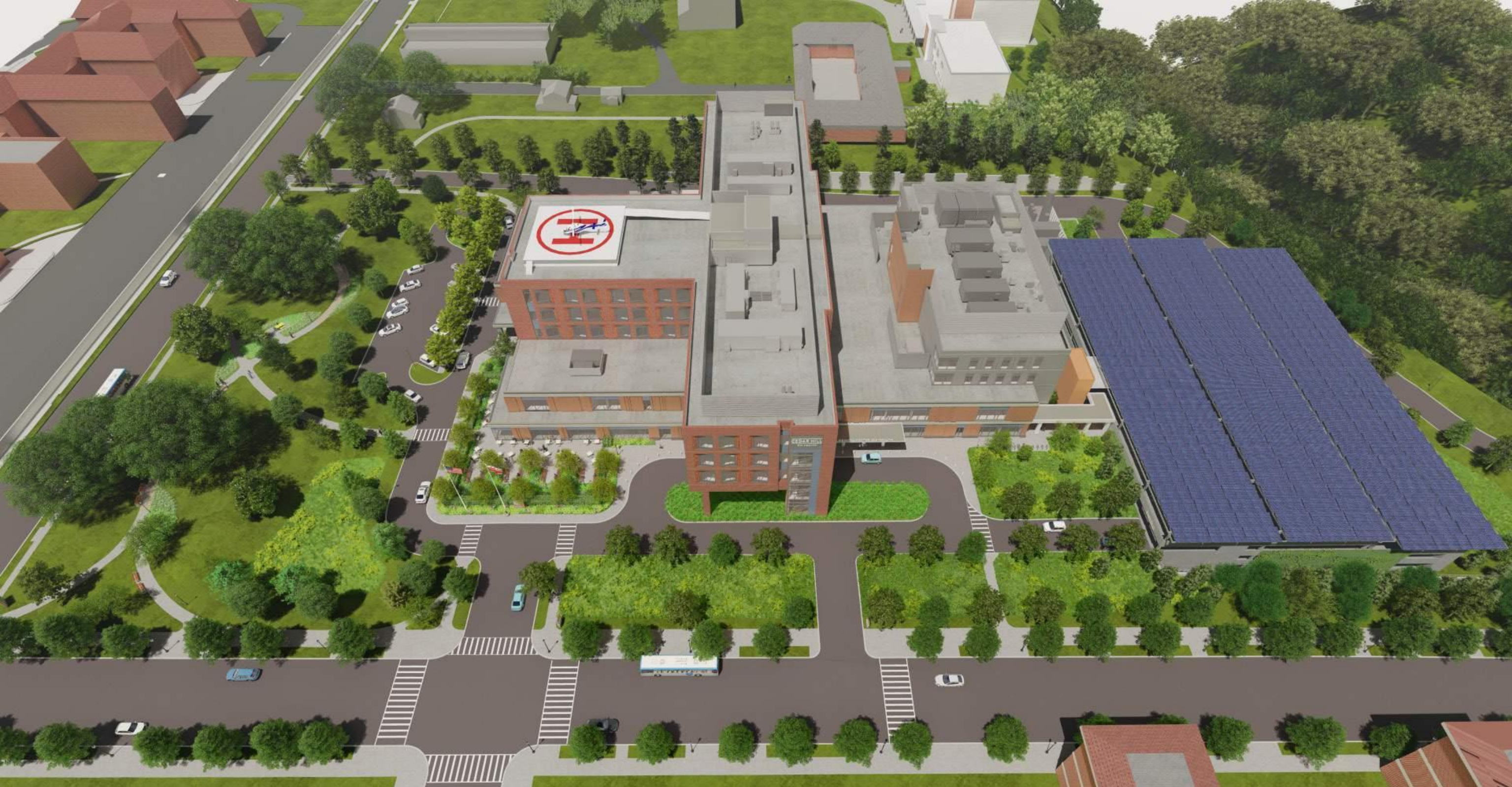














---

# CEDAR HILL

## REGIONAL MEDICAL CENTER

---

GW HEALTH | WASHINGTON, DC

**ST. ELIZABETHS EAST**

COMMISSION OF FINE ARTS  
FINAL DESIGN SUBMISSION  
**PRESENTATION**

APRIL 21, 2022

 GOVERNMENT OF THE  
DISTRICT OF COLUMBIA  
MURIEL BOWSER, MAYOR

 **Turner**

 **McKISSACK**  
B U I L D M c K I S S A C K

