



TUDOR PLACE ARCHIVES AND COLLECTIONS

TUDOR PLACE FOUNDATION

1644 31ST STREET NW

HARTMAN-COX ARCHITECTS

APRIL 1, 2021 OLD GEORGETOWN BOARD MEETING | CONCEPTUAL REVIEW (DESIGN DEVELOPMENT)

Preserving an Architectural Treasure



Restoring the Landscape



Tudor Place Master Preservation Plan

Conserving an Extraordinary Collection



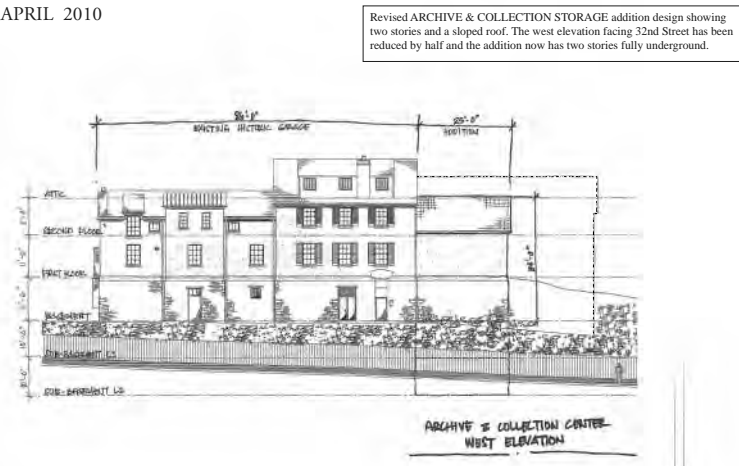
Enhancing Visitor Engagement



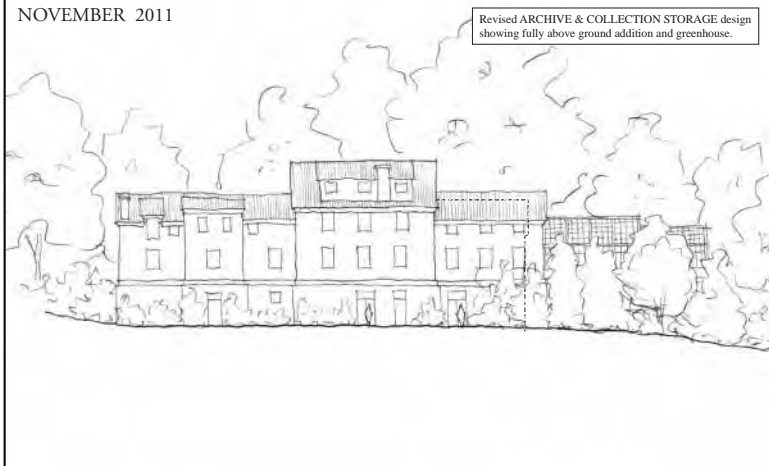
JANUARY 2010



APRIL 2010



NOVEMBER 2011



JANUARY 2012 | OGB

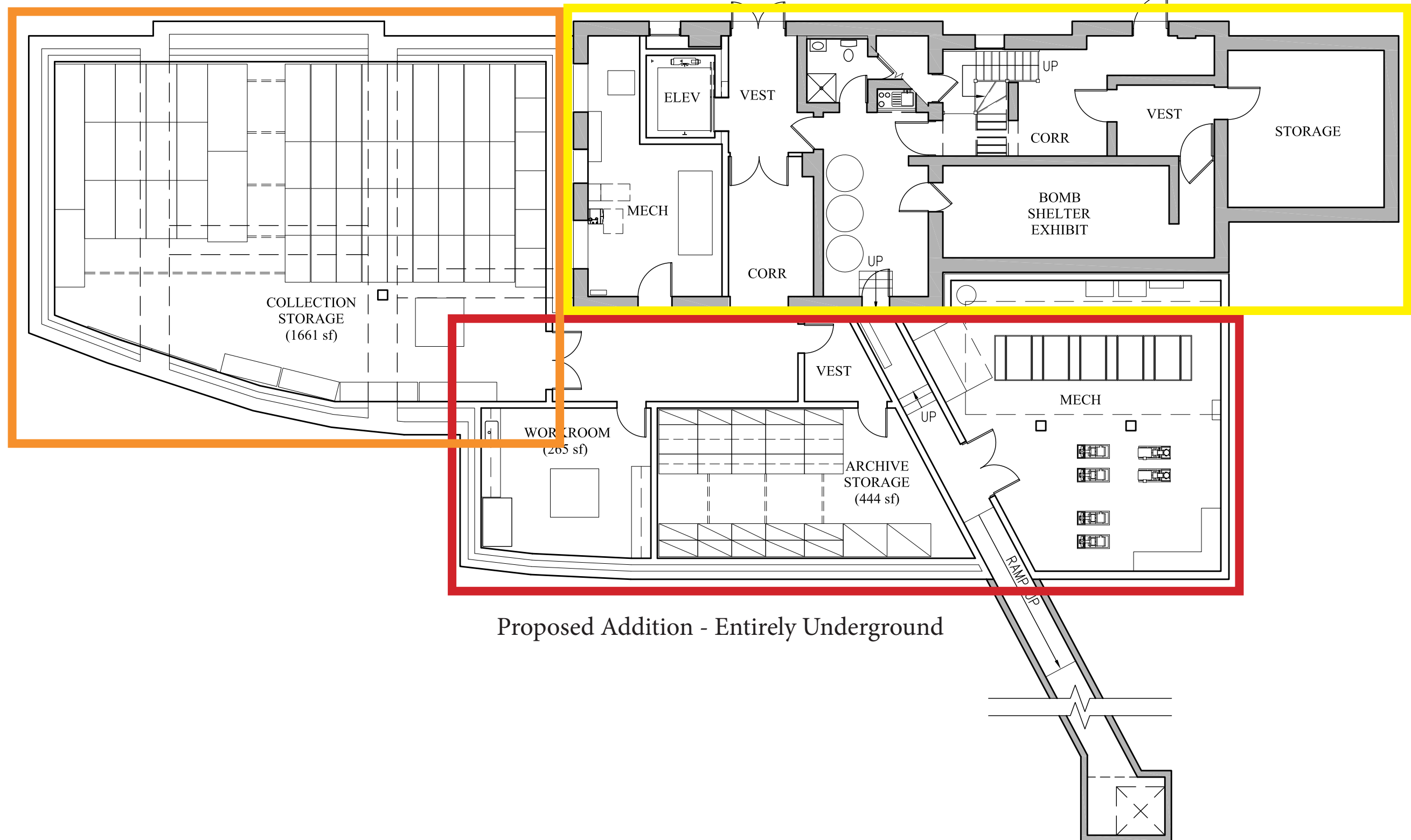


MAY 2019 | OGB

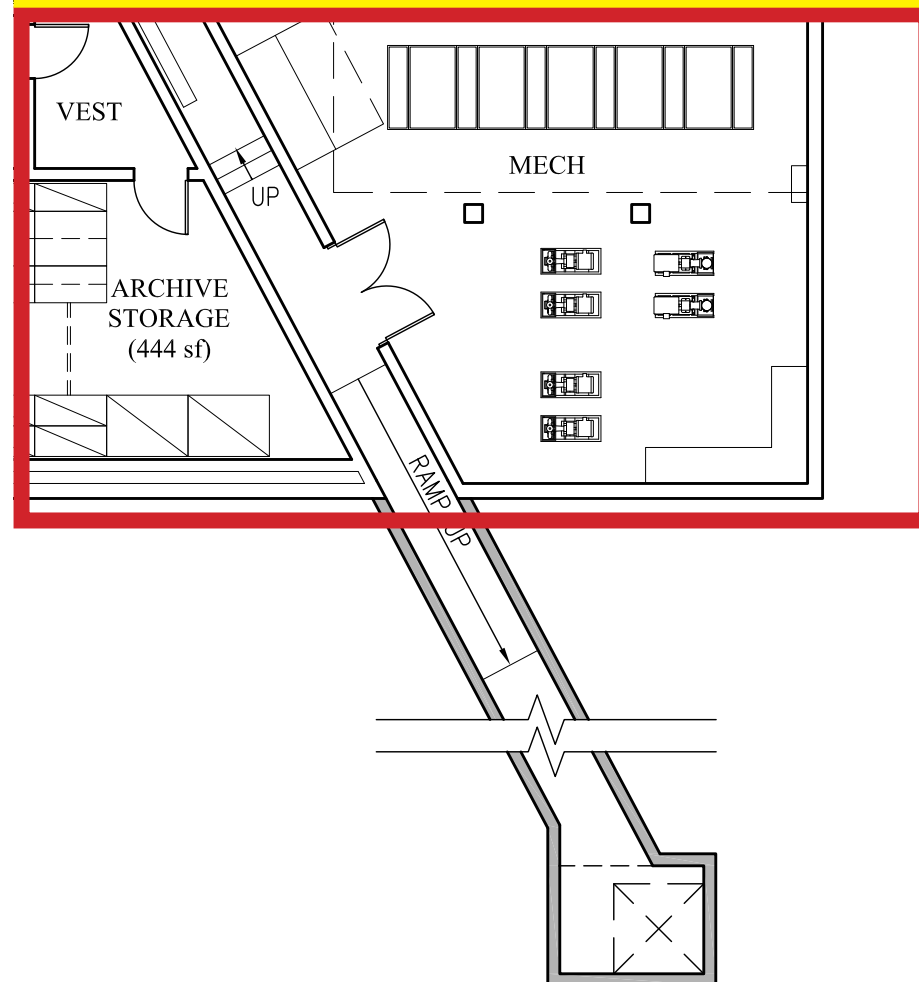
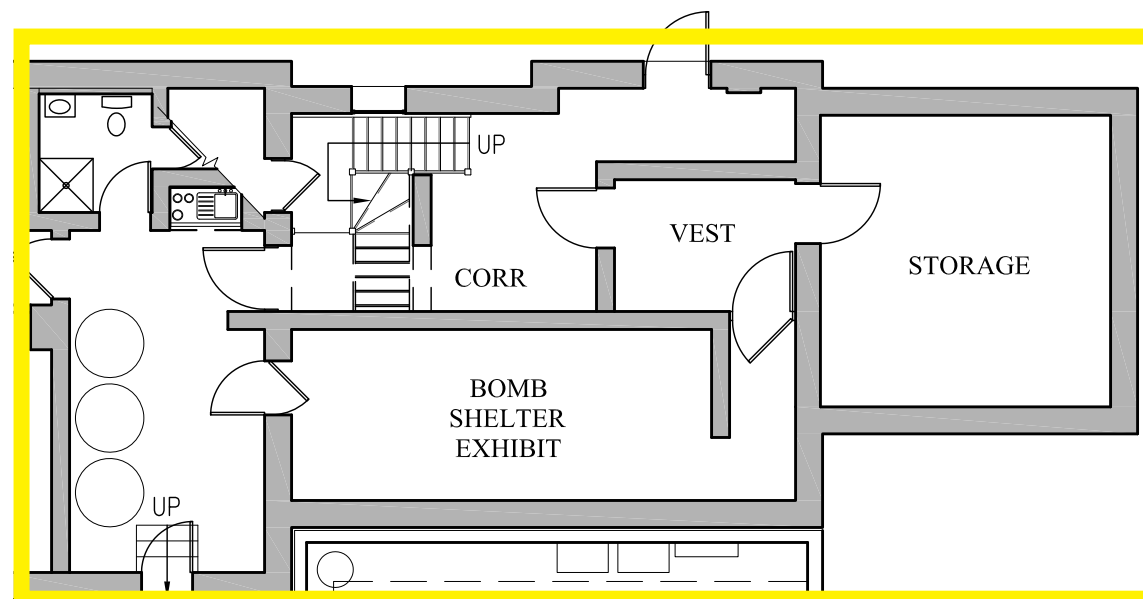


Proposed Addition - Partially Underground

Original Basement



Proposed Addition - Entirely Underground





CONCEPT APPROVAL, SEPTEMBER 2019



EAST ELEVATION



EAST ELEVATION



NORTH ELEVATION



SOUTH ELEVATION



WEST ELEVATION (FROM 32ND STREET NW)



WEST ELEVATION



— — — outline of Sept 2019 design previously approved by Old Georgetown Board
— — — outline of May 2019 design previously reviewed by Old Georgetown Board









Building heights relative to first floor of existing building.

— — — — — outline of Sept 2019 design previously approved by Old Georgetown Board

— — — — — outline of May 2019 design previously reviewed by Old Georgetown Board

TUDOR PLACE HISTORIC HOUSE AND GARDEN

APRIL 1, 2021 MEETING

PAGE 12

ARCHIVE AND COLLECTION STORAGE BUILDING, GREENHOUSE & EDUCATION CLASSROOM

WEST ELEVATION | PROPOSED





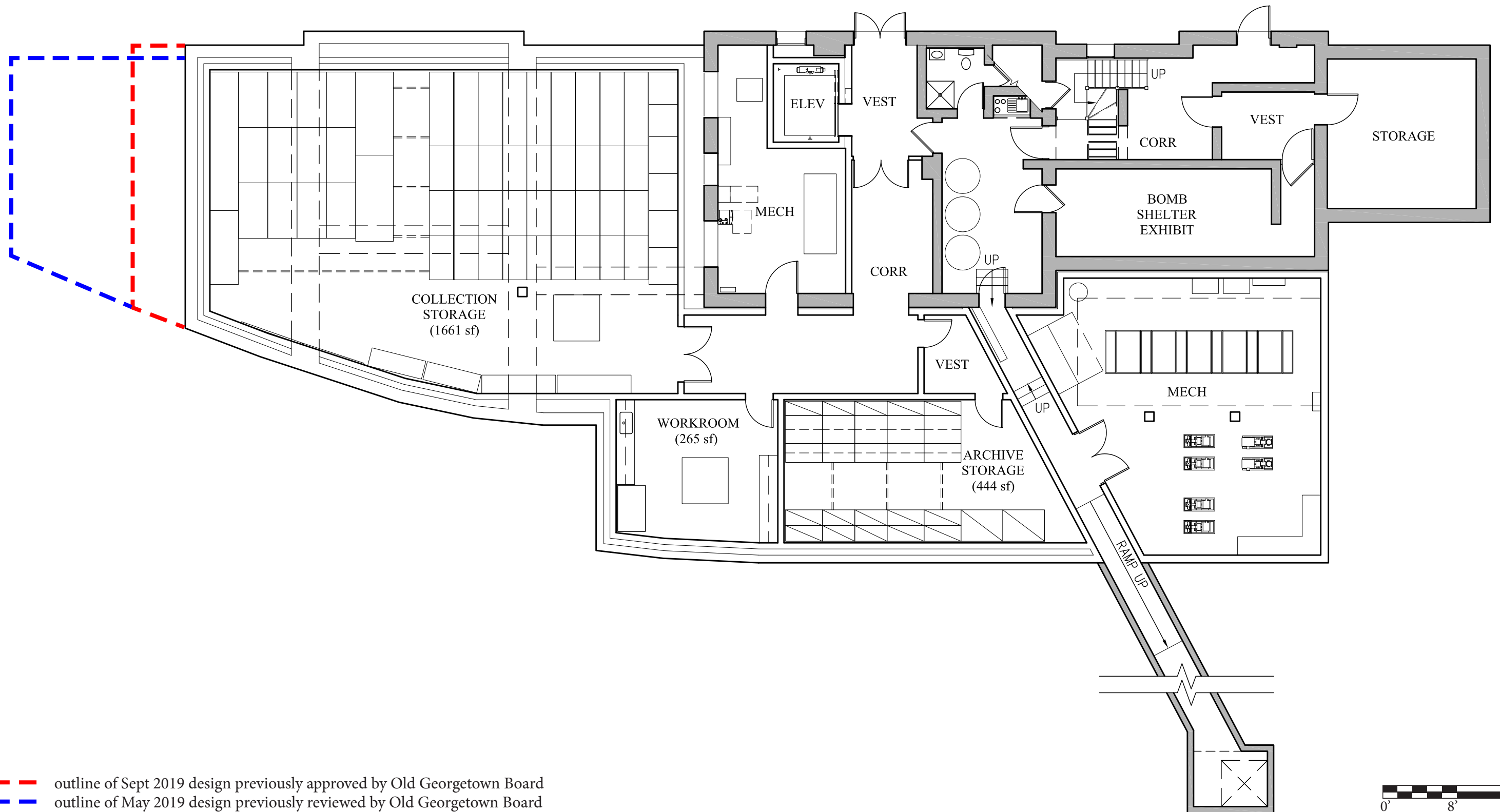
Building heights relative to first floor of existing building.
 --- outline of Sept 2019 design previously approved by Old Georgetown Board
 --- outline of May 2019 design previously reviewed by Old Georgetown Board



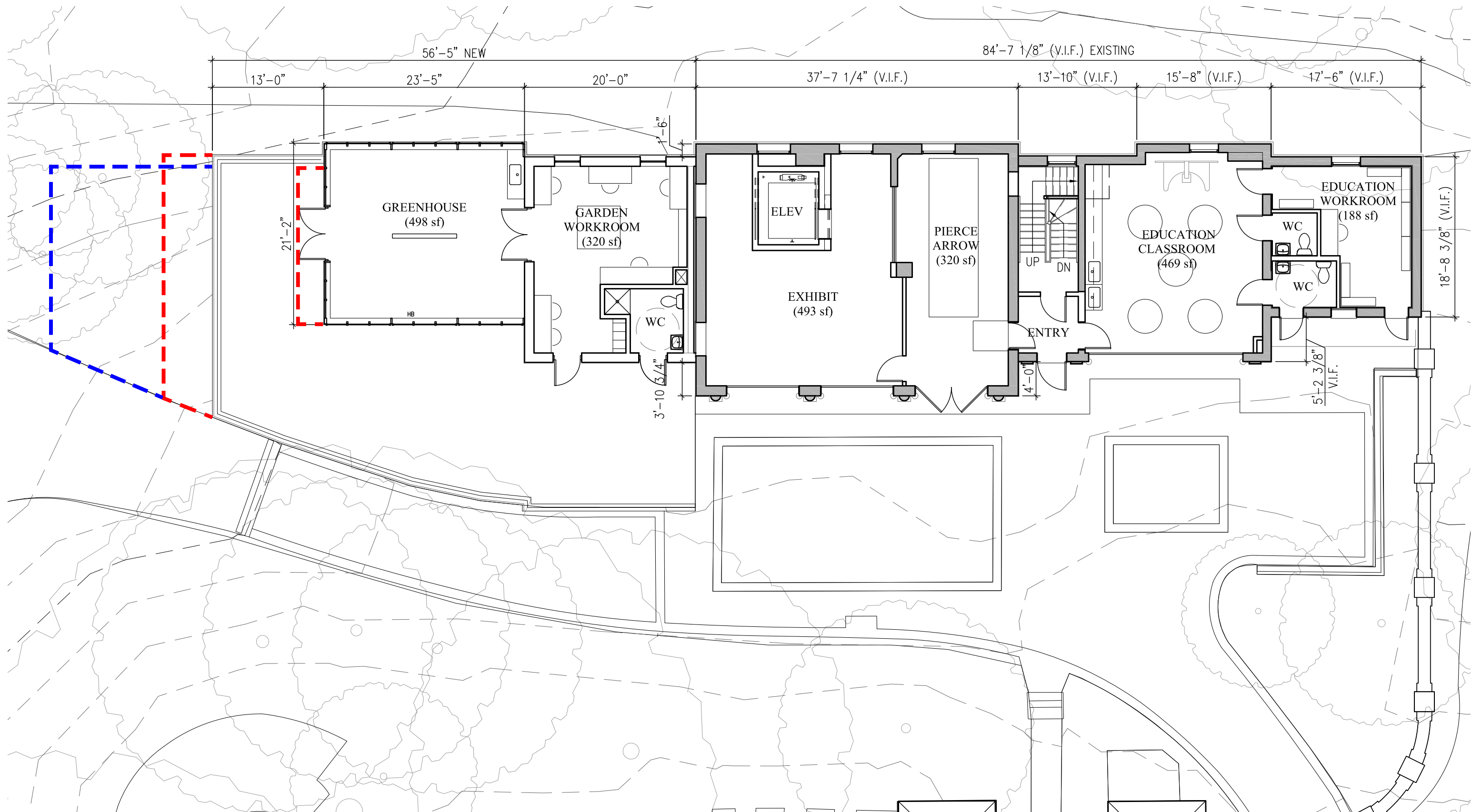


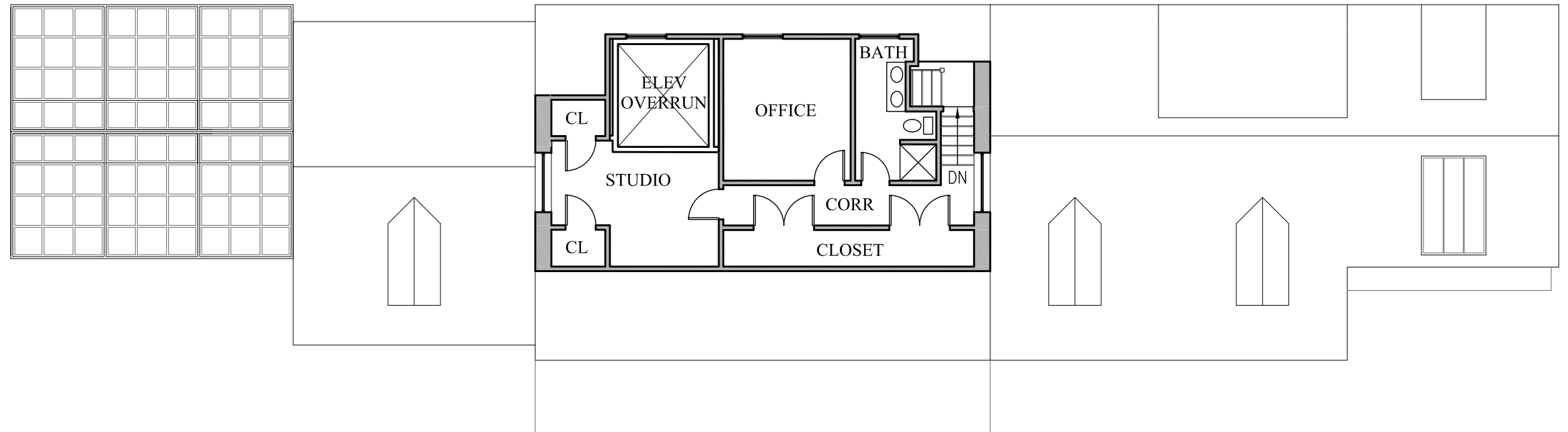
Building heights relative to first floor of existing building.



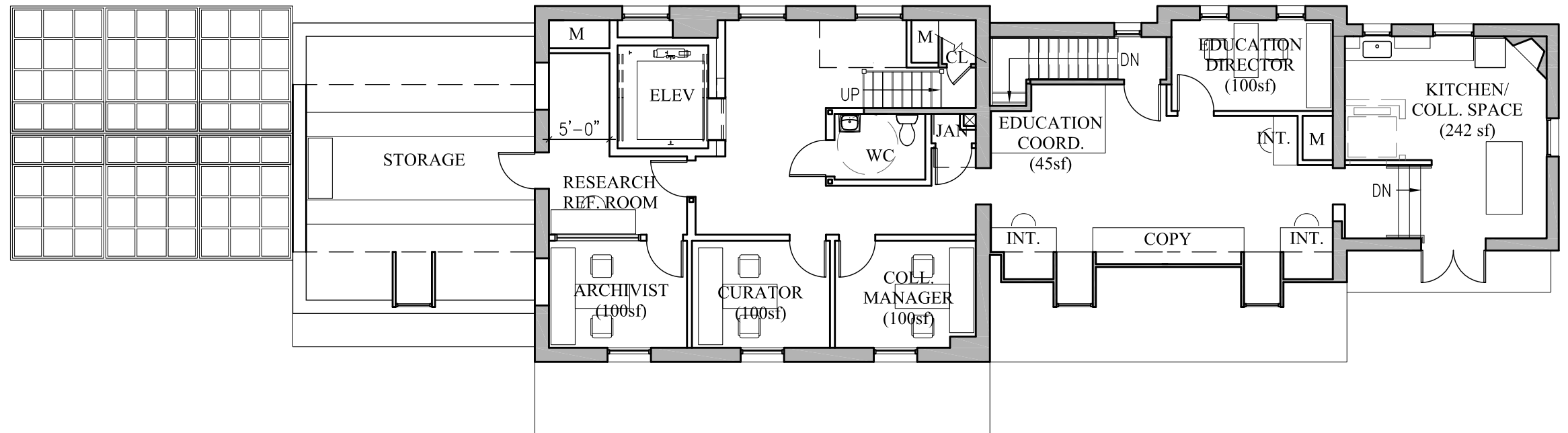


- - - outline of Sept 2019 design previously approved by Old Georgetown Board
 - - - outline of May 2019 design previously reviewed by Old Georgetown Board

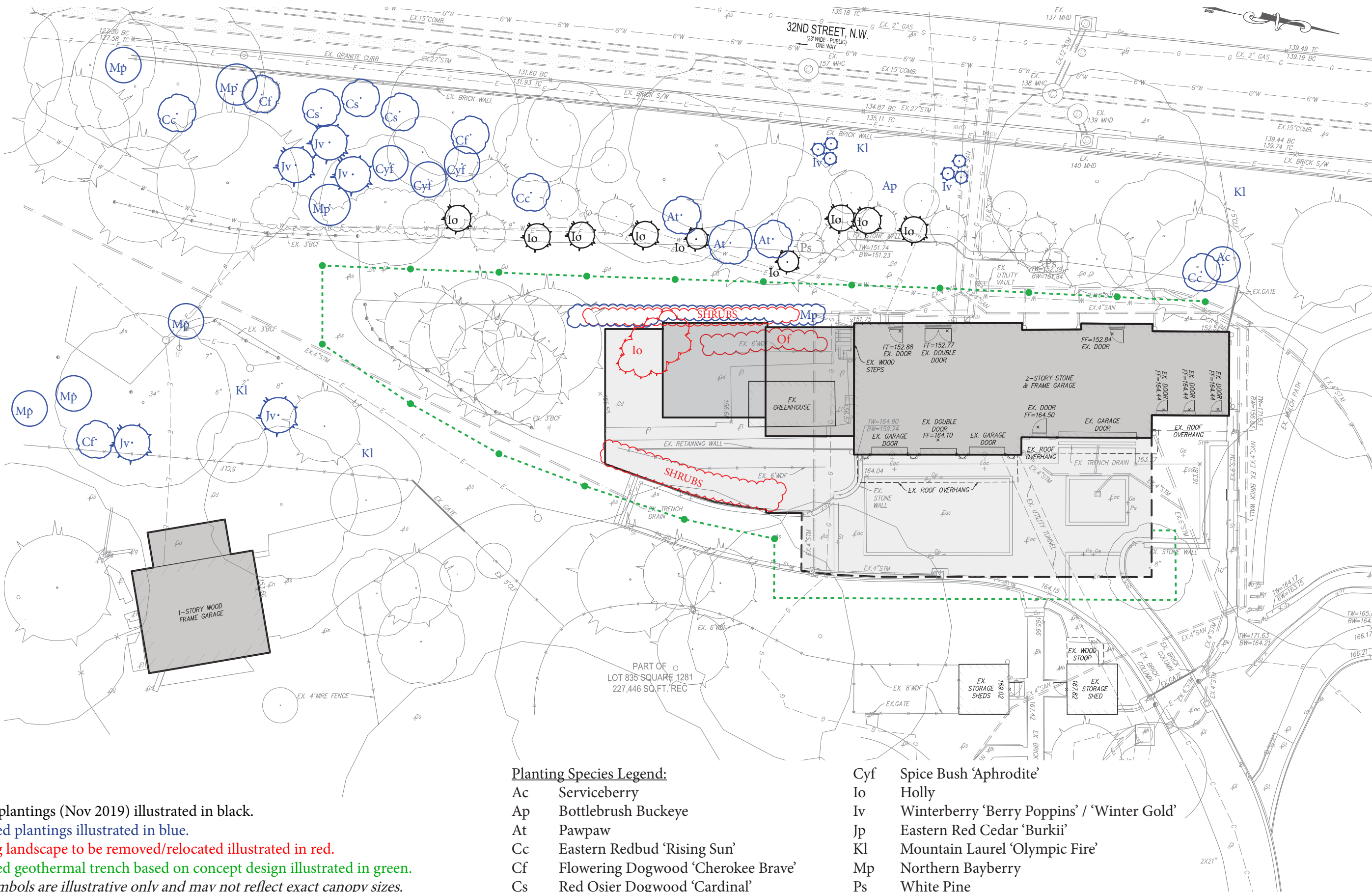




THIRD FLOOR PLAN



SECOND FLOOR PLAN



Recent plantings (Nov 2019) illustrated in black.

Proposed plantings illustrated in blue.

Existing landscape to be removed/relocated illustrated in red.

Proposed geothermal trench based on concept design illustrated in green.

Tree symbols are illustrative only and may not reflect exact canopy sizes.



Photos taken by Hartman-Cox on March 5, 2021





TUDOR PLACE HISTORIC HOUSE AND GARDEN
APRIL 1, 2021 MEETING
PAGE 23

ARCHIVE AND COLLECTION STORAGE BUILDING, GREENHOUSE & EDUCATION CLASSROOM
VIEW FROM 32ND STREET





TUDOR PLACE HISTORIC HOUSE AND GARDEN
APRIL 1, 2021 MEETING
PAGE 25

ARCHIVE AND COLLECTION STORAGE BUILDING, GREENHOUSE & EDUCATION CLASSROOM
VIEW FROM 32ND STREET



PREVIOUSLY APPROVED BY OLD GEORGETOWN BOARD



