

PROJECT SCHEDULE

SIGN TYPE/ DESCRIPTION:	QTY.:	PG.
A. RAY BAN HALO-LIT ILLUMINATION CHANNEL LETTERS ON WIRE MASH BACKGROUND	ONE (1)	4-6

PROJECT:

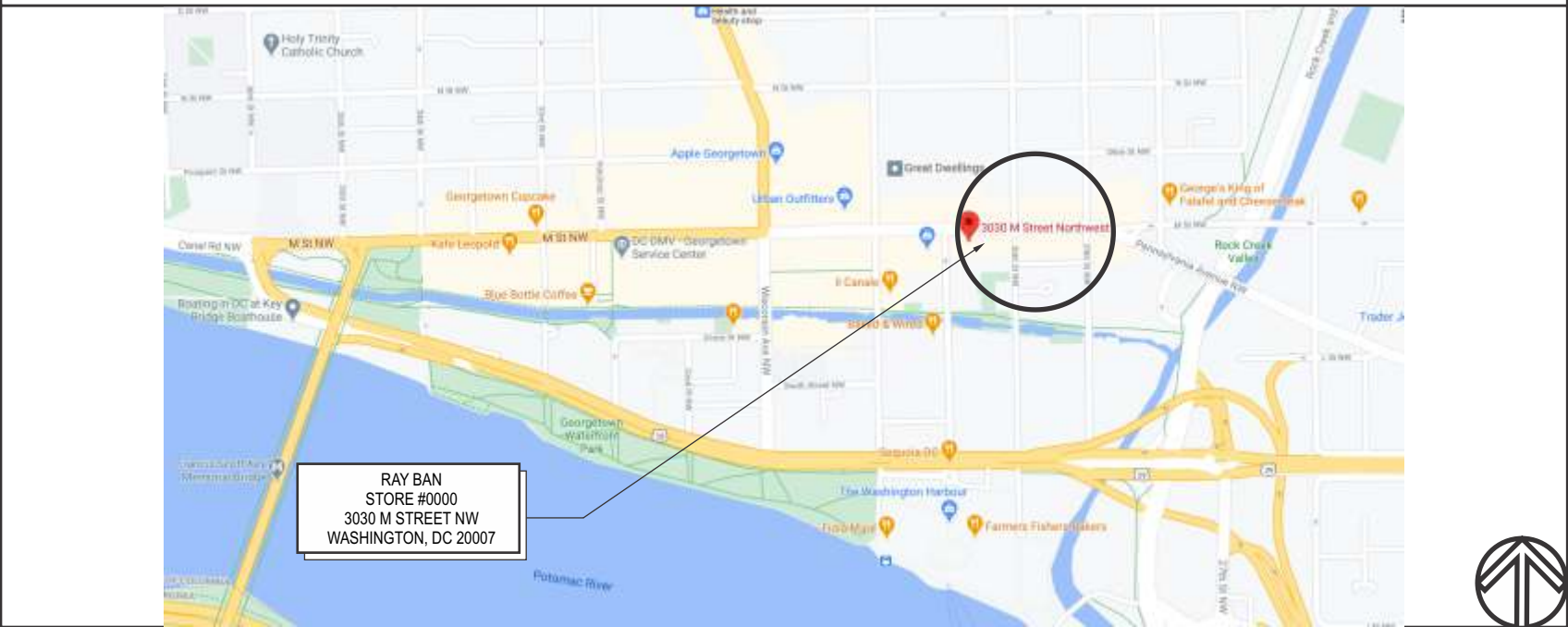


RAY BAN
STORE #0000
3030 M STREET NW
WASHINGTON, DC 20007

REVISIONS

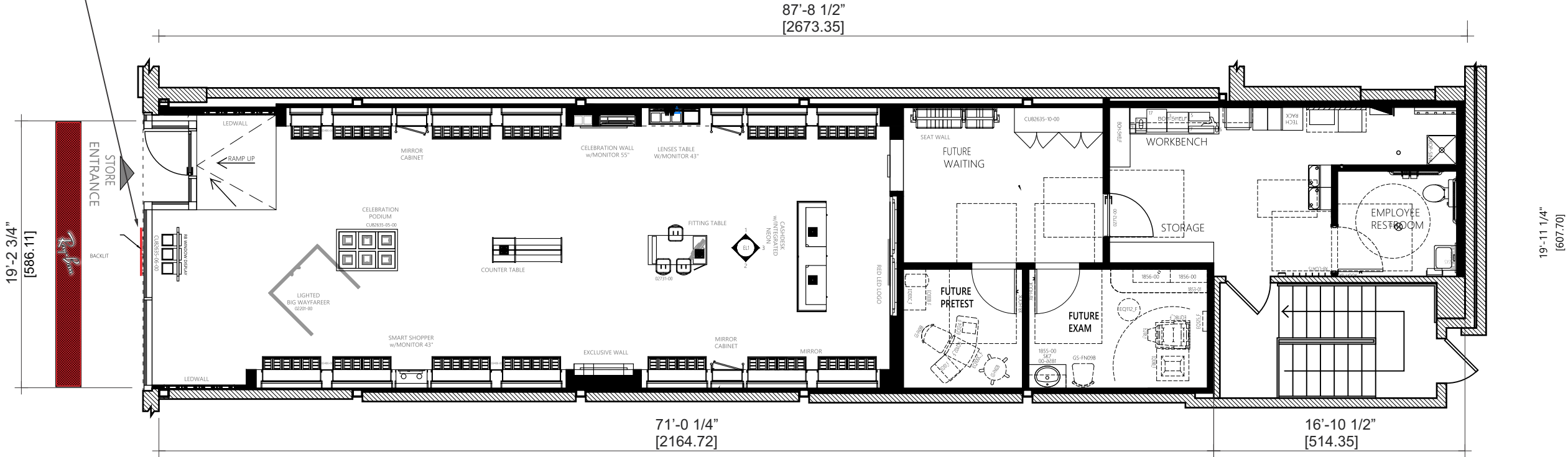
#	DATE	DB	NOTES
R1	4.14.2021	JWW	CHANGE SIZE AND COLOR LOGO
R2	4.15.2021	JWW	CHANGE PHOTO ELEVATION
R3	4.19.2021	JWW	ADDED DIMENSIONS
R4	5.18.2021	JWW	ADDED NOTE AND SAMPLE OF PATTERN

VICINITY MAP



RAY BAN HALO-LIT ILLUMINATION CHANNEL
LETTERS ON WIRE MASH BACKGROUND

SIGN
A



PROPOSED

19'-2 1/2" STOREFRONT

STOREFRONT ELEVATION-PHOTO RENDERING

SCALE: 3/8"=1'-0"

1



ATTACHMENT MUST BE IN THE MORTAR JOINTS ONLY

EXISTING

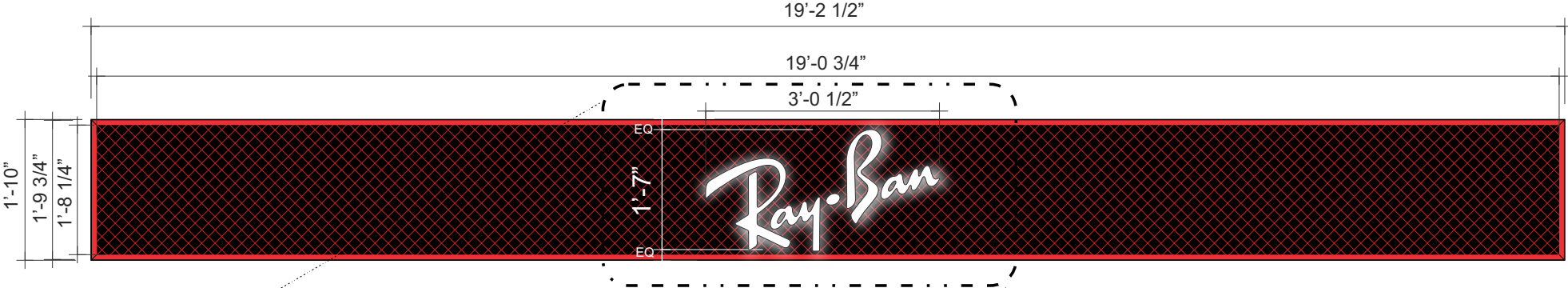


TRIANGLE SIGN SERVICES	11 Azar Court • P.O. Box 24186 Baltimore, Maryland 21227 T: 410-247-5300 • F: 410 247-1944 Reproduction In Whole or Part Prohibited without Express Permission of Triangle S & S © TSS	CLIENT & LOCATION 	RAY BAN STORE #0000 3030 M STREET NW WASHINGTON, DC 20007	LEAD NO. 198851T_R4	DATE 4.12.2021	REVIEWED BY	SHEET NO. 3 of 6
				SM - PM SM-BS	DRAWN BY JWW	SEG. NO.	

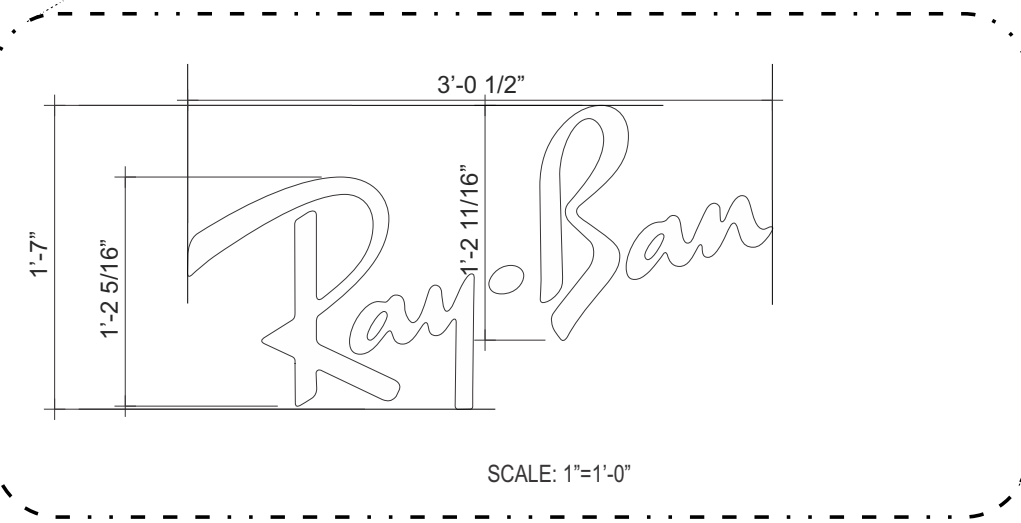
RAY BAN HALO-LIT ILLUMINATION CHANNEL LETTERS ON WIRE MASH BACKGROUND(RB-HL)

SCALE: 1/2"=1'-0"

A



LETTERS ARE ATTACHED TO BACKGROUND PANEL

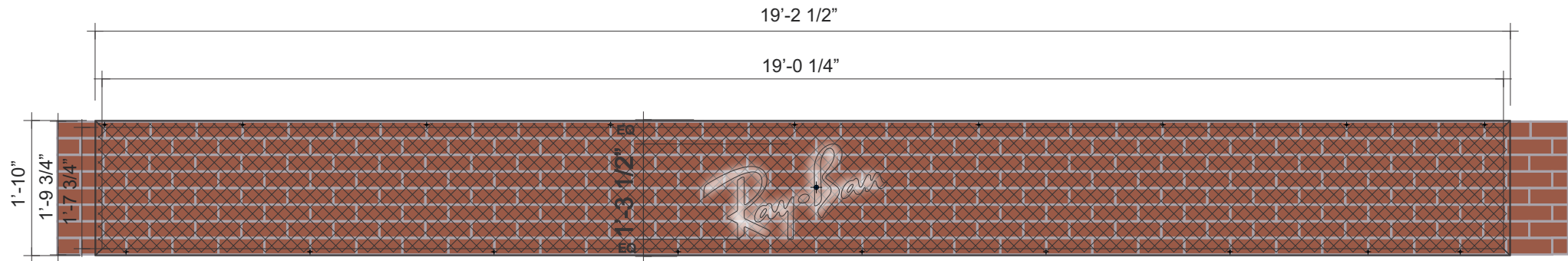


ATTACHMENT MUST BE IN THE MORTAR JOINTS

RAY BAN HALO-LIT ILLUMINATION CHANNEL LETTERS ON WIRE MASH BACKGROUND(RB-HL)

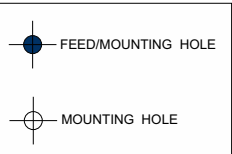
SCALE: 1/2"=1'-0"

A-1



MOUNTING HOLES IN VERTICAL MORTAR JOINTS 24" TO 32" APART

LETTERS ARE ATTACHED TO BACKGROUND PANEL



ATTACHMENT MUST BE IN THE MORTAR JOINTS

SCALE: NTS





April 16, 2021

To whom it may concern,

As the Ray-Ban retail brand management team here in the U.S., we are hereby requesting a variance to increase the size of our exterior storefront sign according to the newly proposed drawings.

By design the upper case letters in the Ray-Ban logo are proportionally much larger than the lower case letters when compared to a typical font. The logo is also positioned at an angle. Both characteristics make legibility difficult when viewed from a distance.

The upper case letters on the existing sign adhere to the 12" height limitation. We are requesting that the sign be increased in size so that the upper case letter "R" be 14.3" tall and the upper case letter "B" be 14.6" tall.

We appreciate your consideration and hope you will approve our request for a variance.

Sincerely,
Luxury House Brands
Luxottica of America, Inc.

LUXURY HOUSE BRANDS
8570 Sunset Blvd Suite 200, West Hollywood, CA 90069

TEL +1-310-734-5000