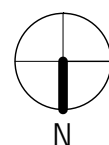
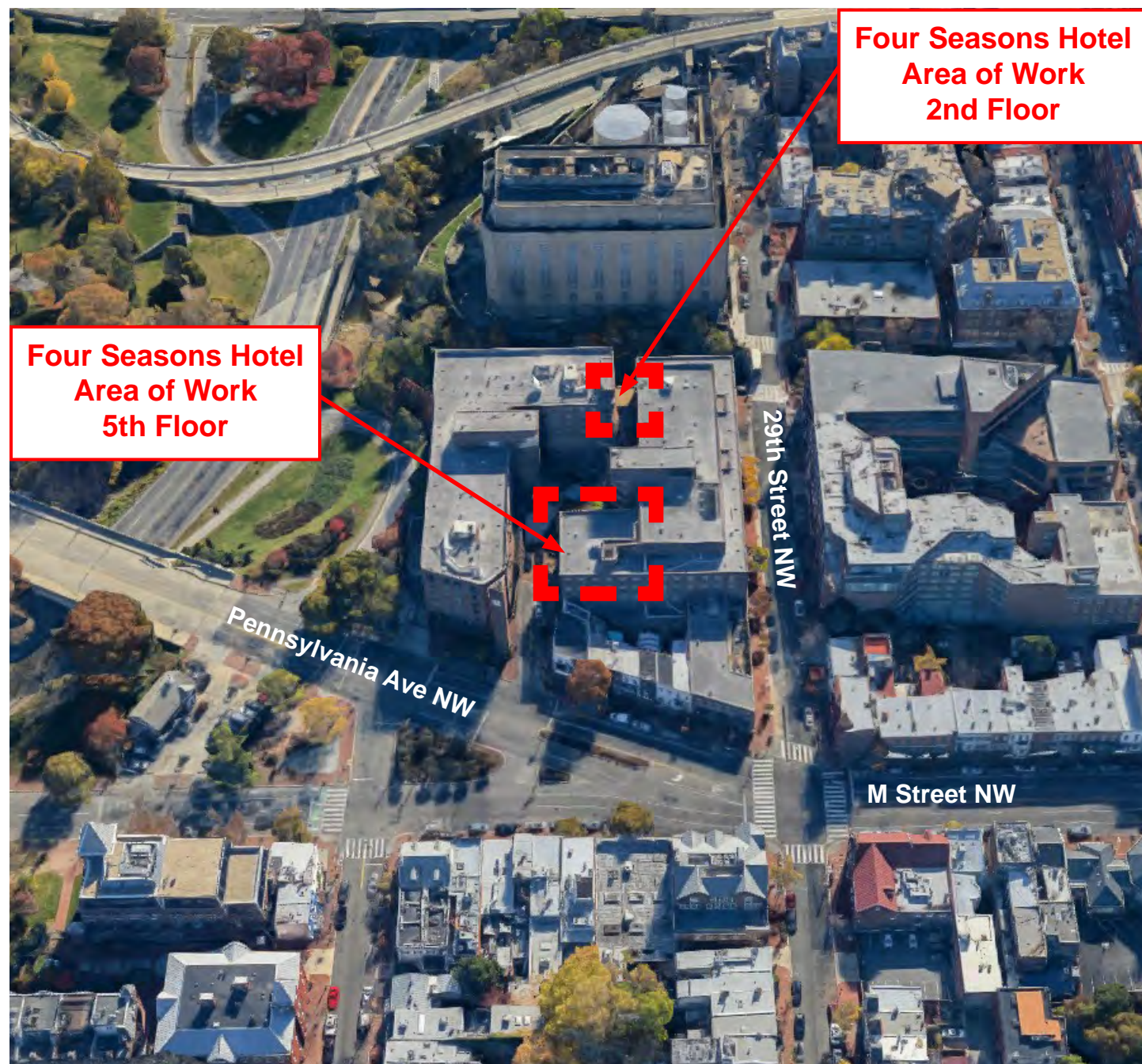




# FOUR SEASONS GEORGETOWN HOTEL ROOF DECK PROPOSAL

June 15, 2022

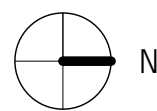
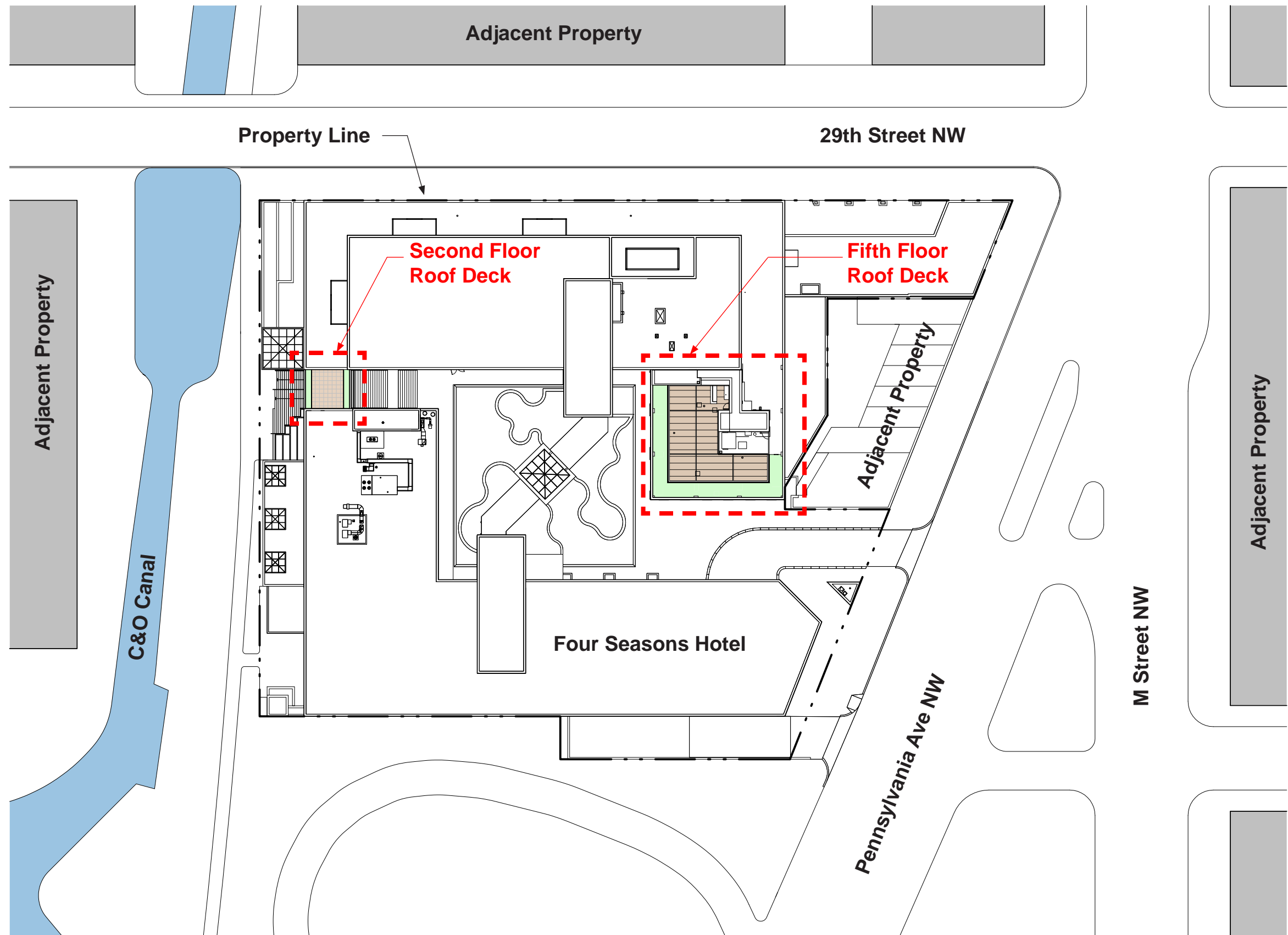




VIEW LOOKING SOUTH



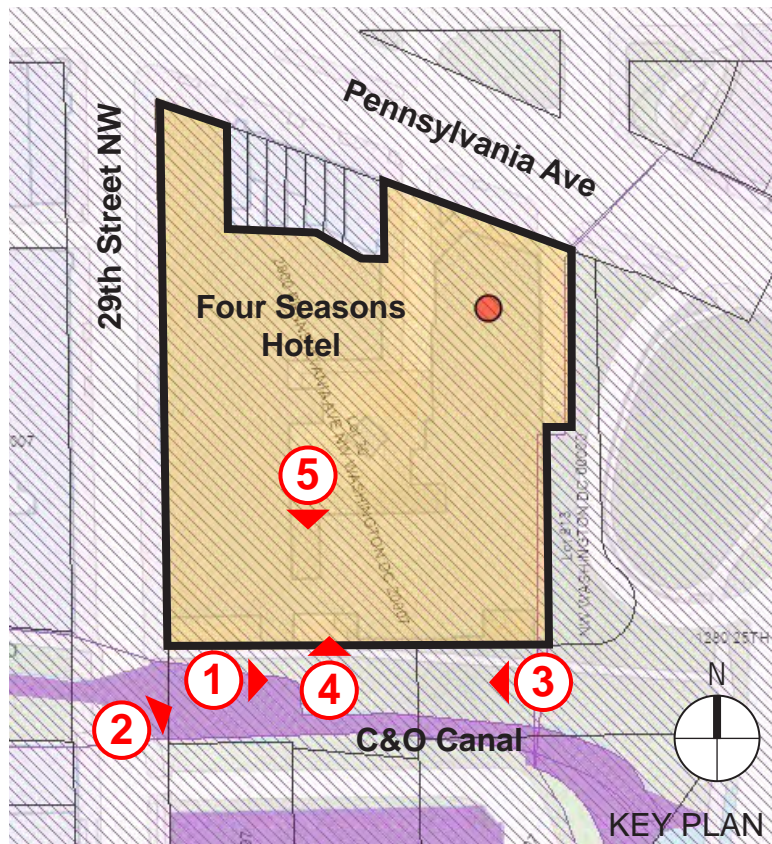
VIEW LOOKING NORTH

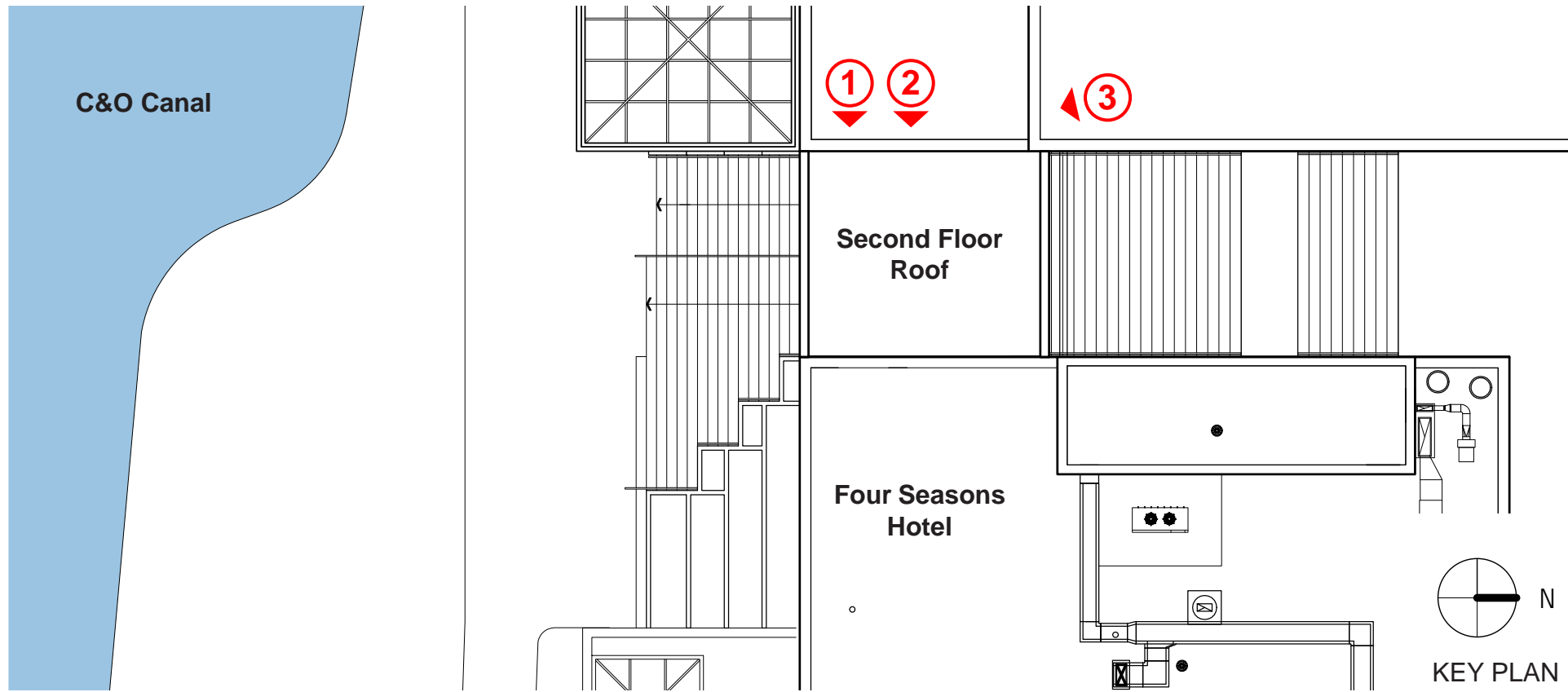
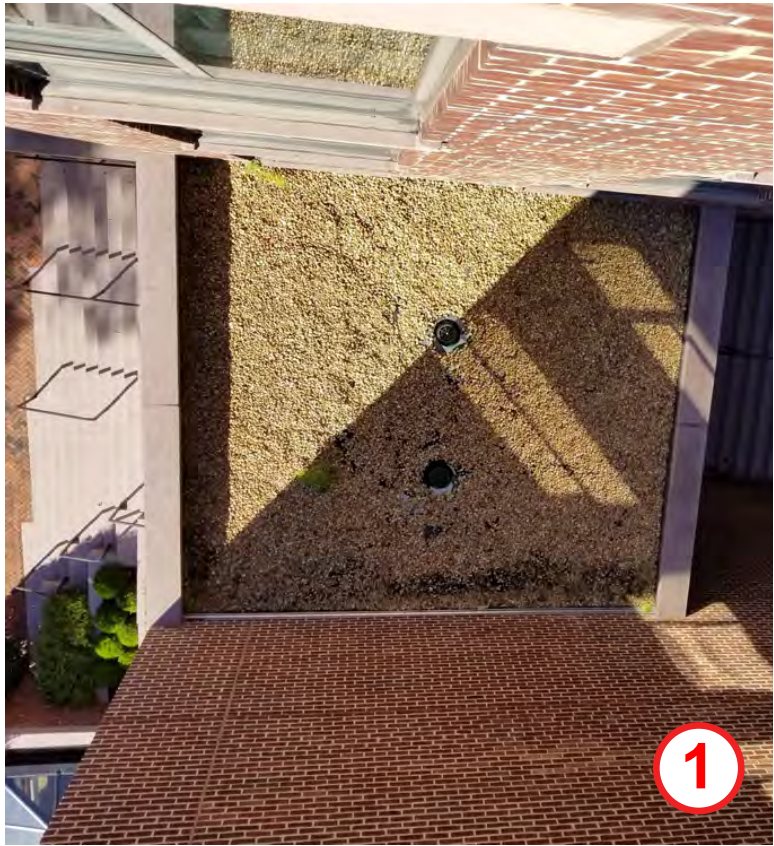


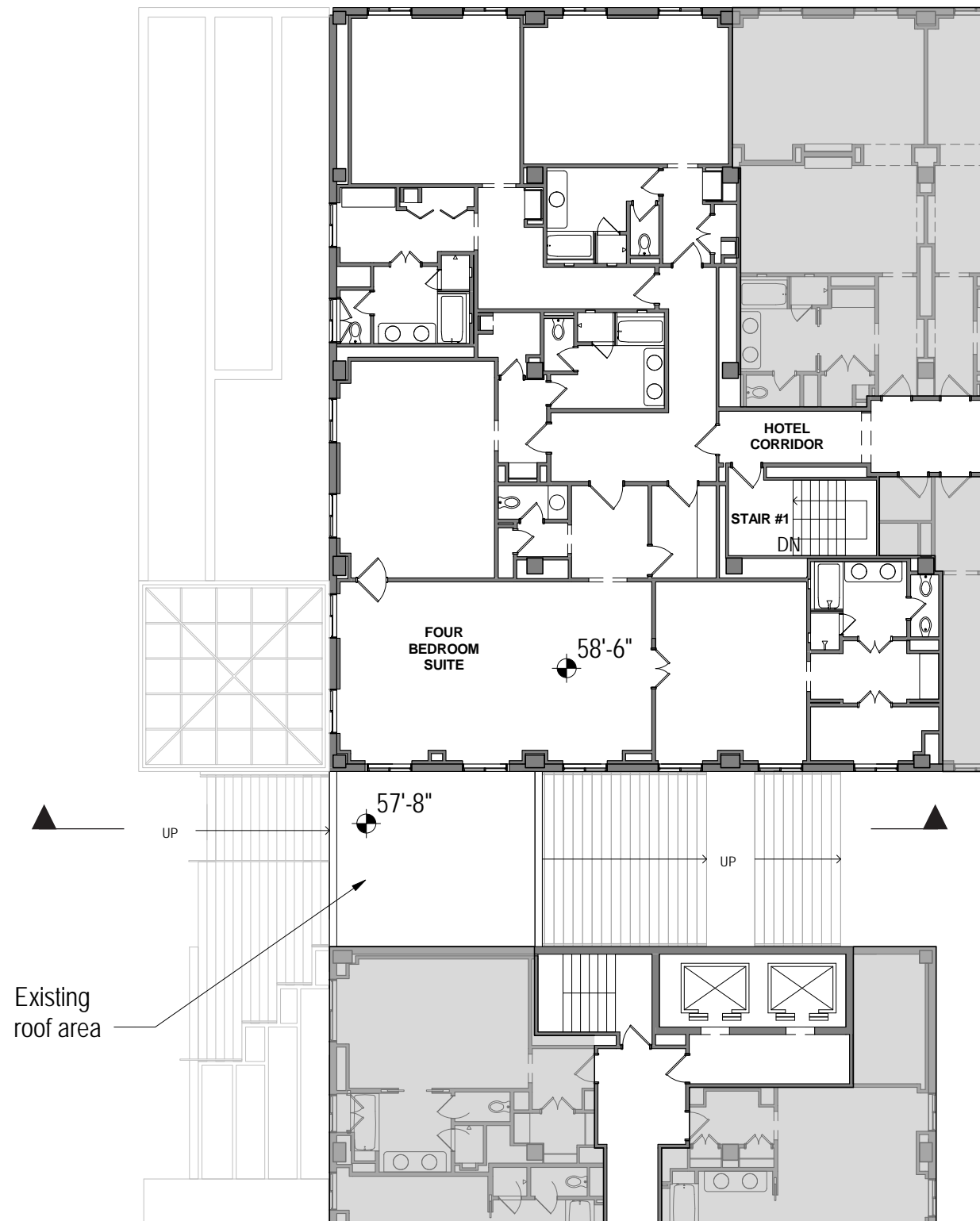


# FOUR SEASONS GEORGETOWN HOTEL

## SECOND FLOOR DECK PROPOSAL







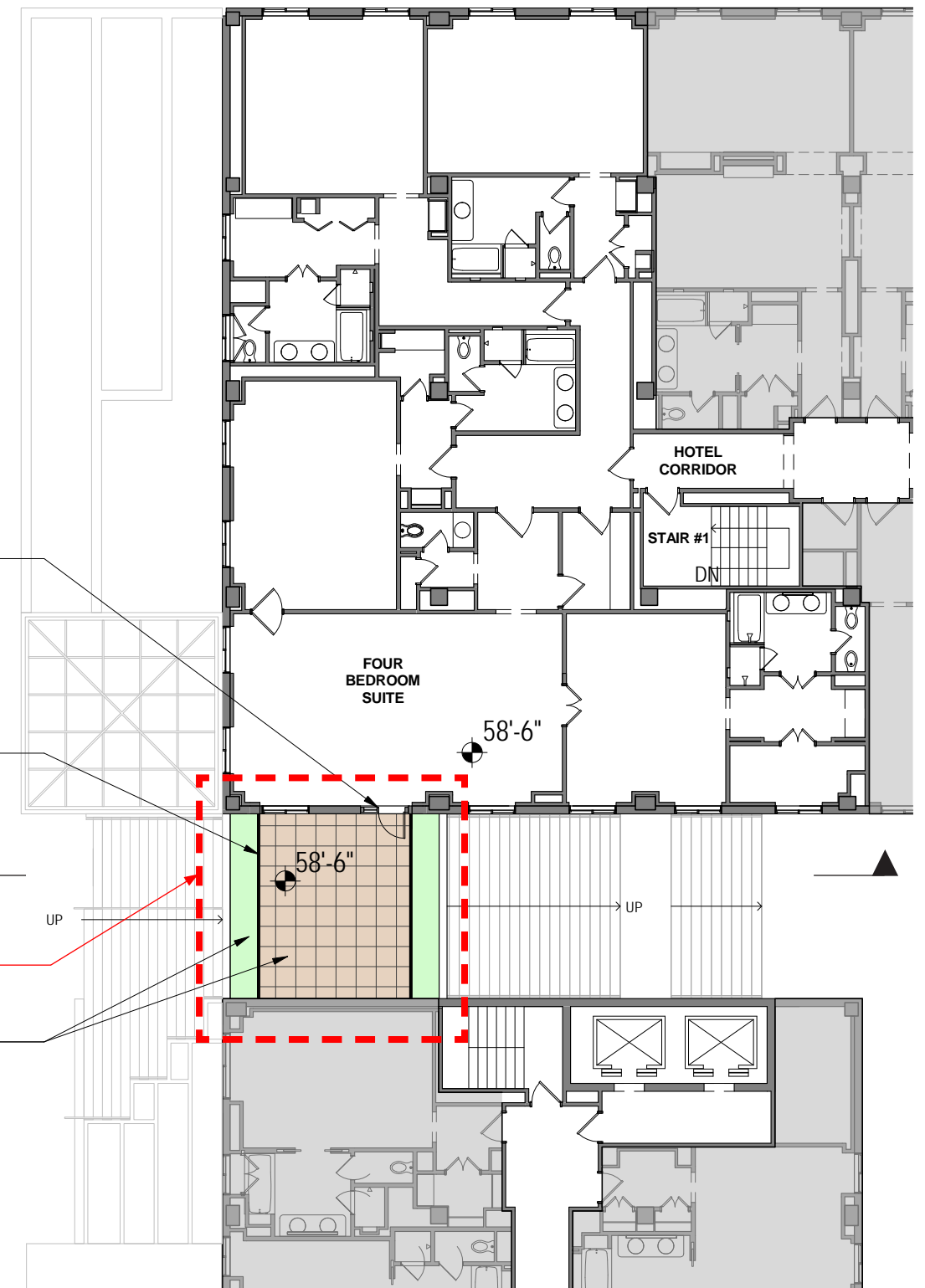
SECOND FLOOR PLAN - EXISTING

New aluminum door, sidelite, & transom assembly in modified 8'-0" x 4'-9" masonry opening (sill lowered)

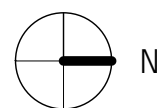
New 42" glass guardrail system

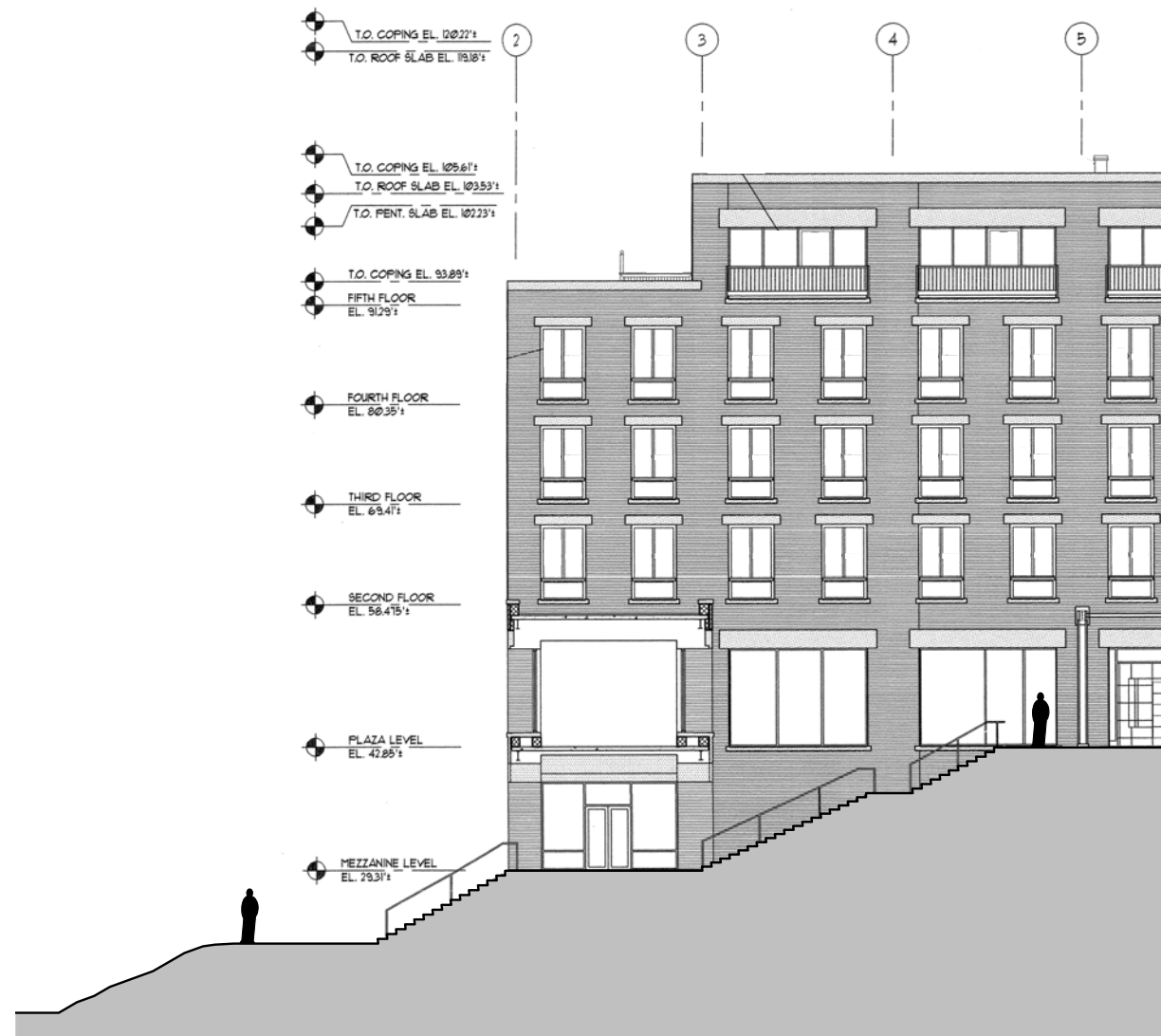
**Area of new exterior work**

New 2x2 modular ipe deck system on adjustable pedestals with succulent planter trays behind parapet

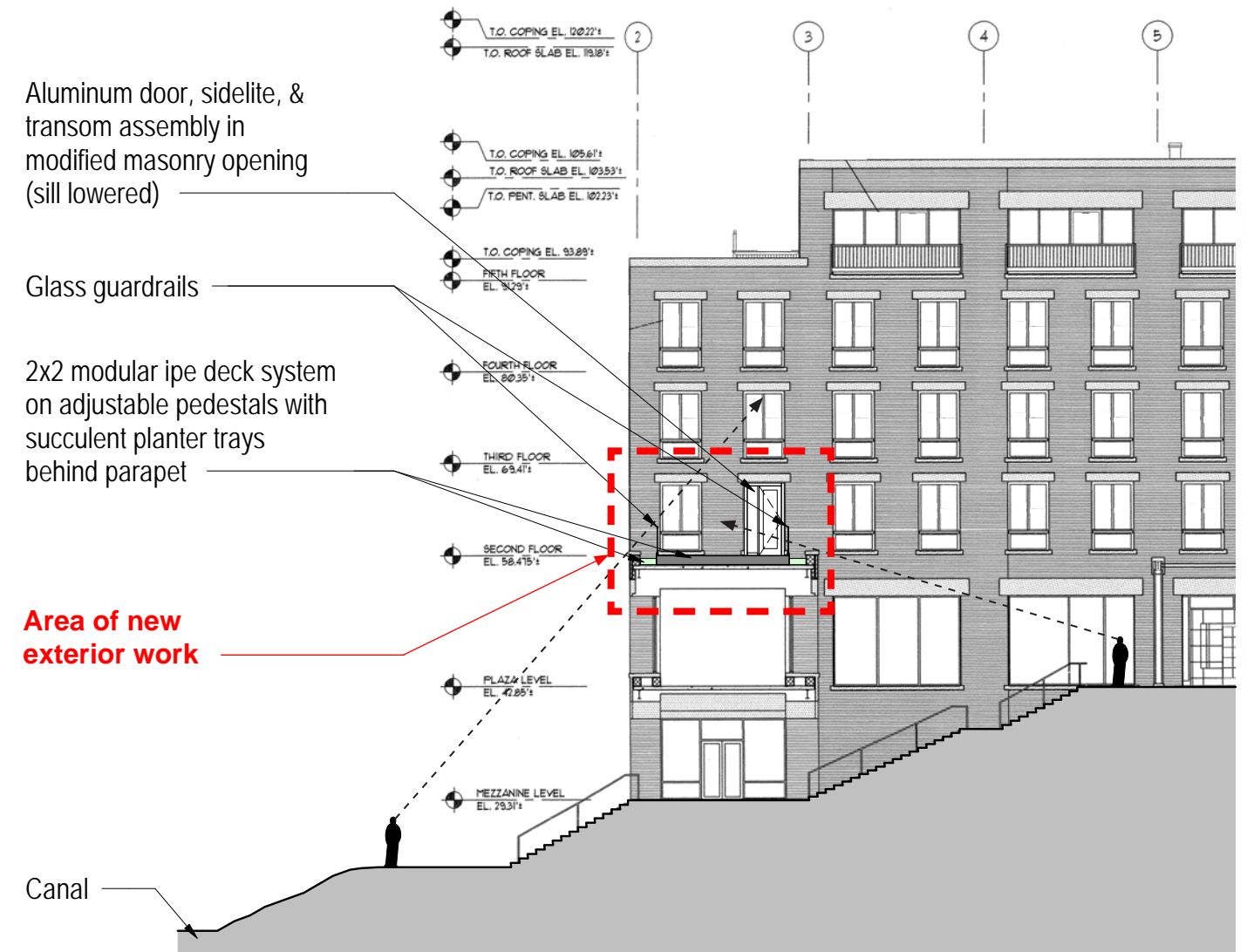


SECOND FLOOR PLAN - PROPOSED

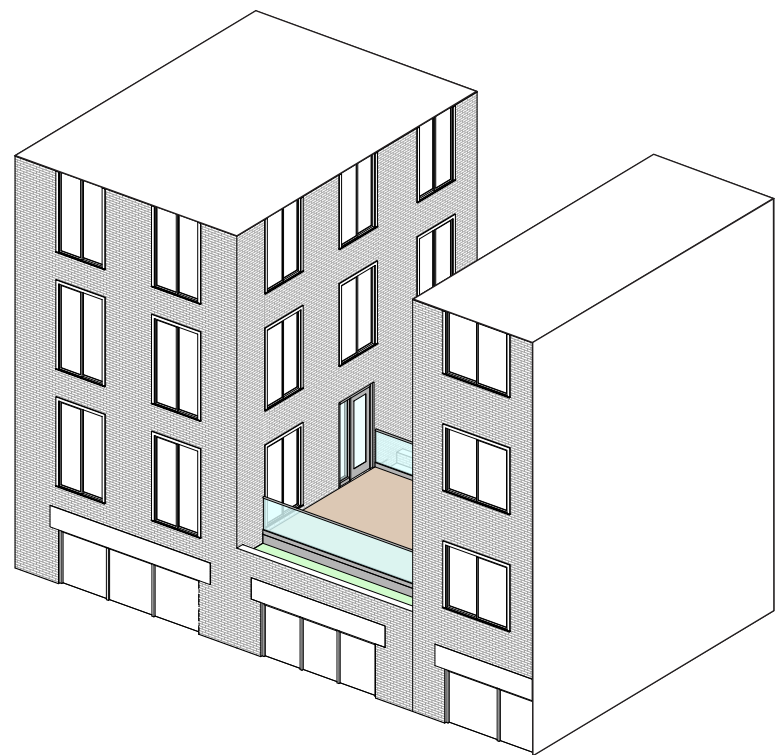




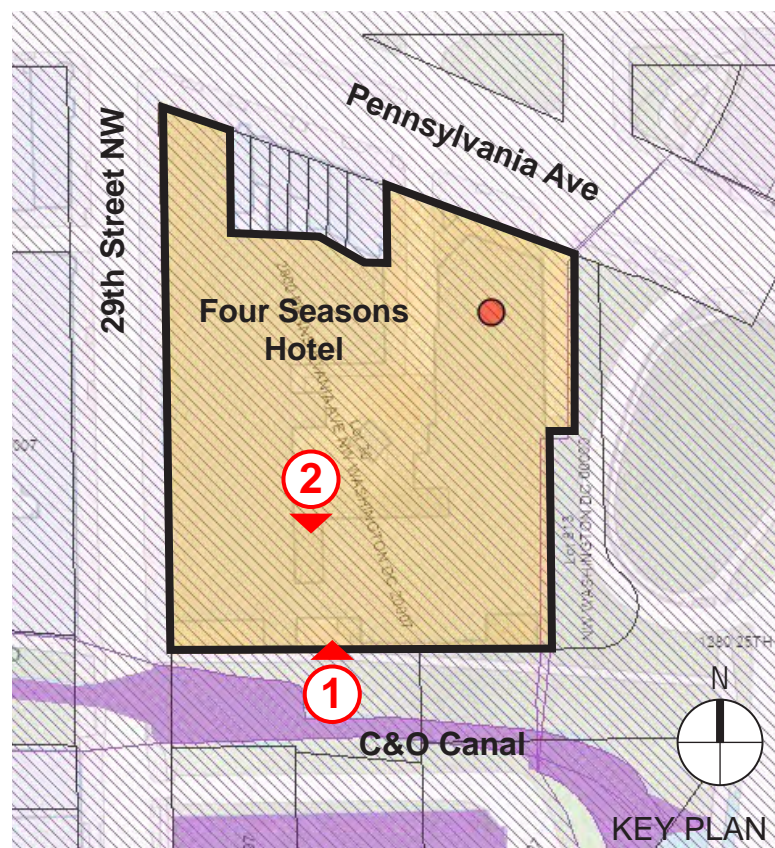
SECOND FLOOR SITE SECTION - EXISTING



SECOND FLOOR SITE SECTION - PROPOSED



AXONOMETRIC VIEW



VIEW FROM CANAL WALKWAY  
(GUARDRAIL NOT VISIBLE BELOW PARAPET)

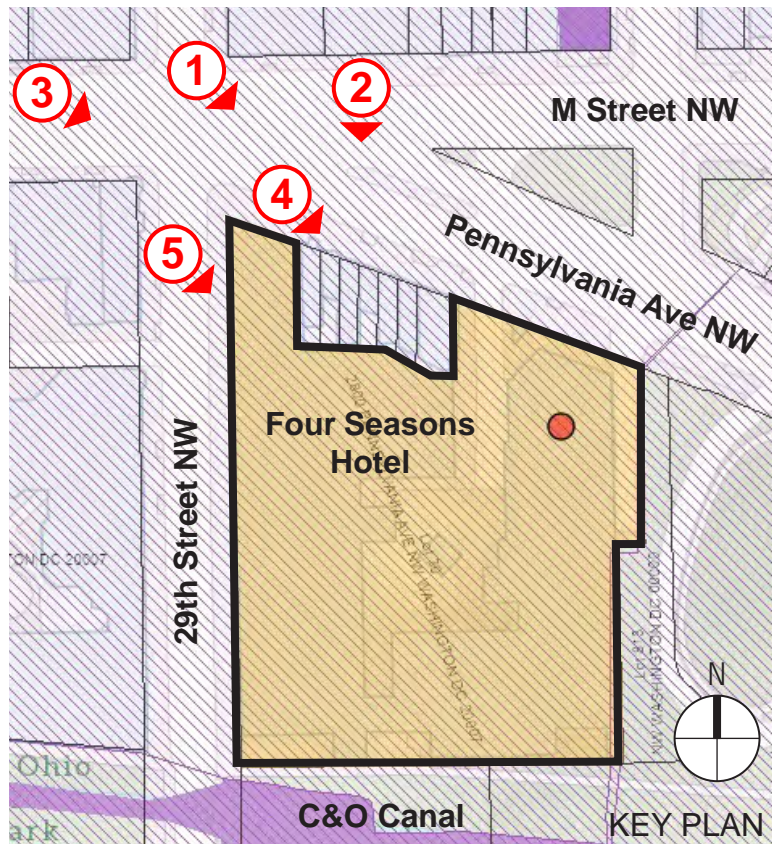


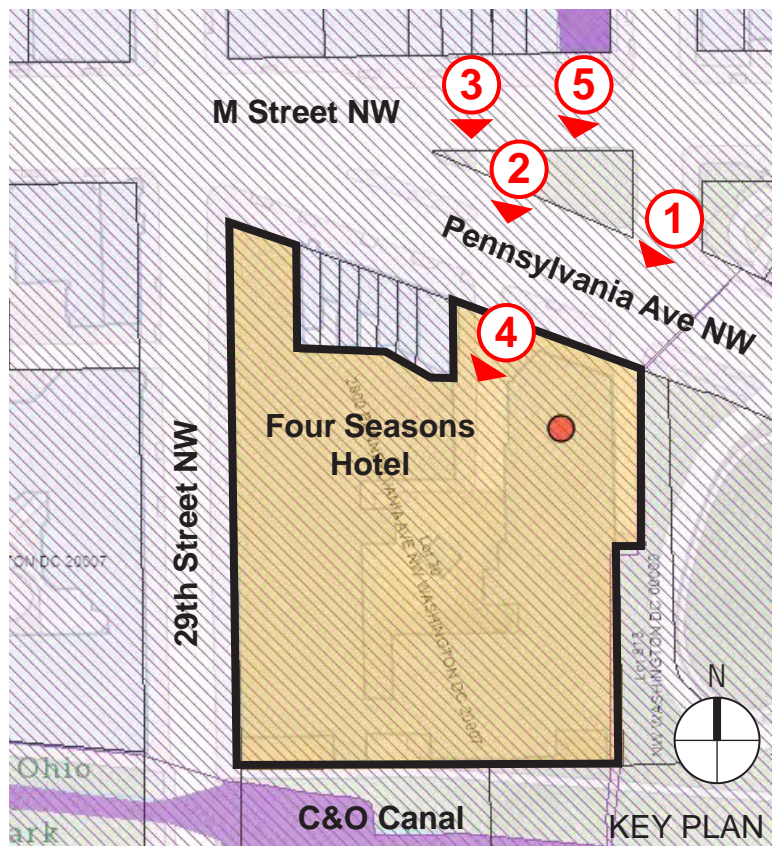
VIEW FROM INTERIOR COURTYARD  
(TOP HALF OF GLASS GUARDRAIL VISIBLE)

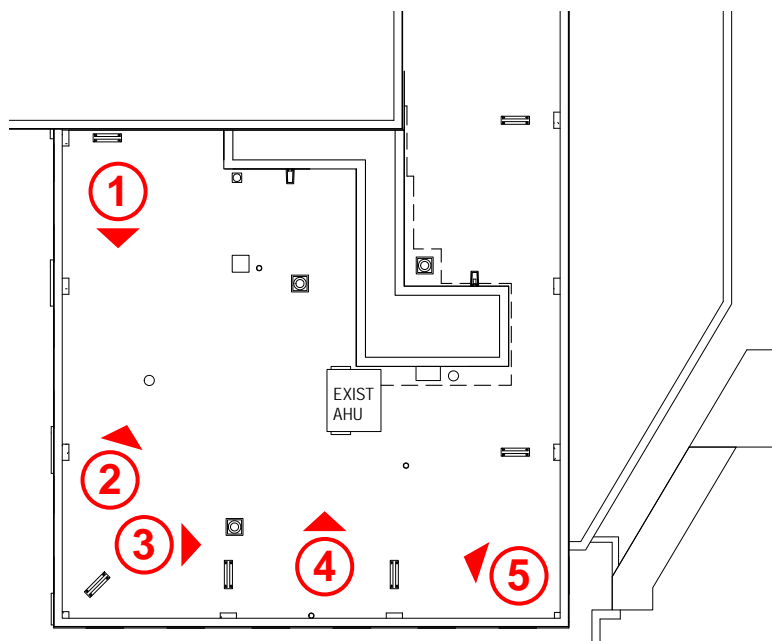
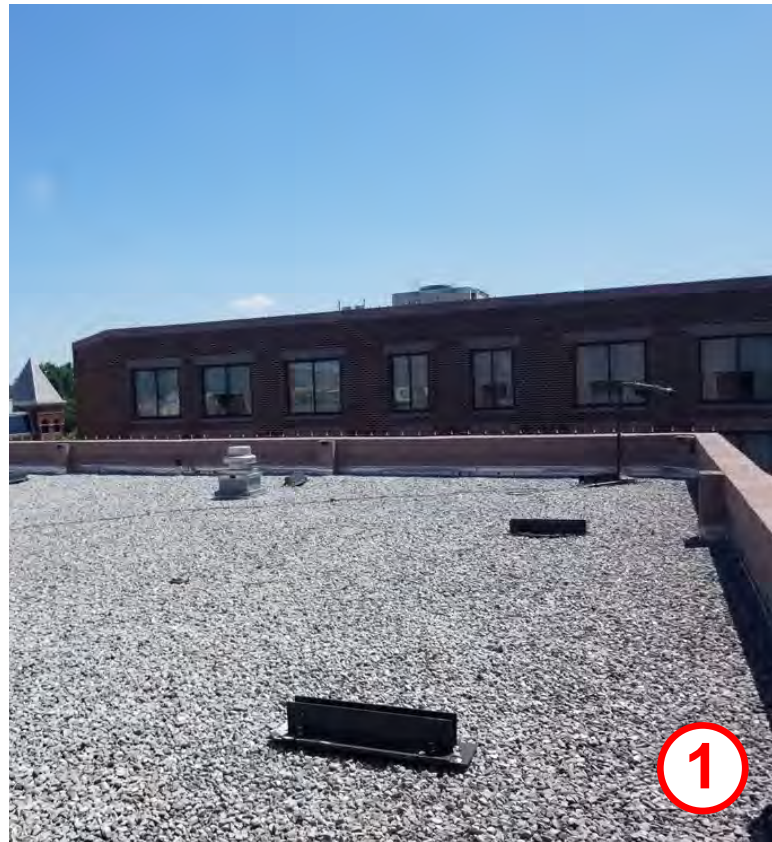


# FOUR SEASONS GEORGETOWN HOTEL

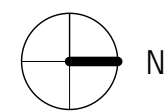
## FIFTH FLOOR DECK PROPOSAL





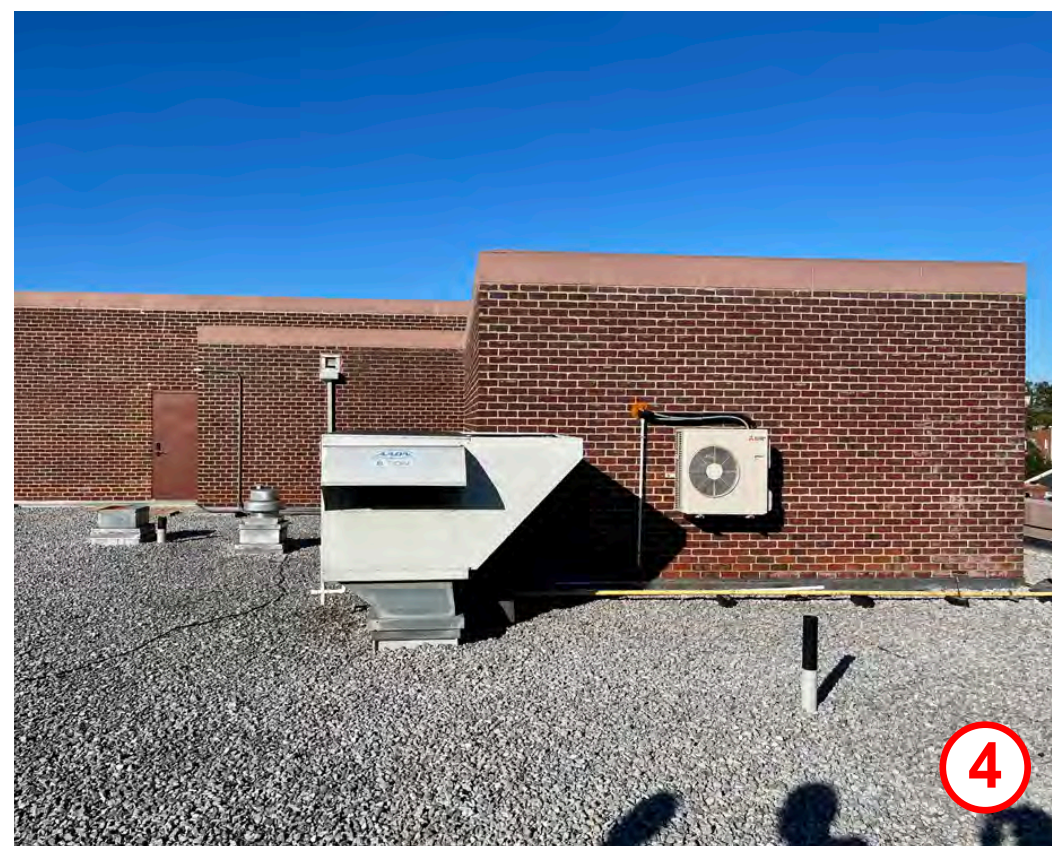


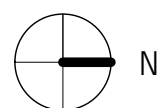
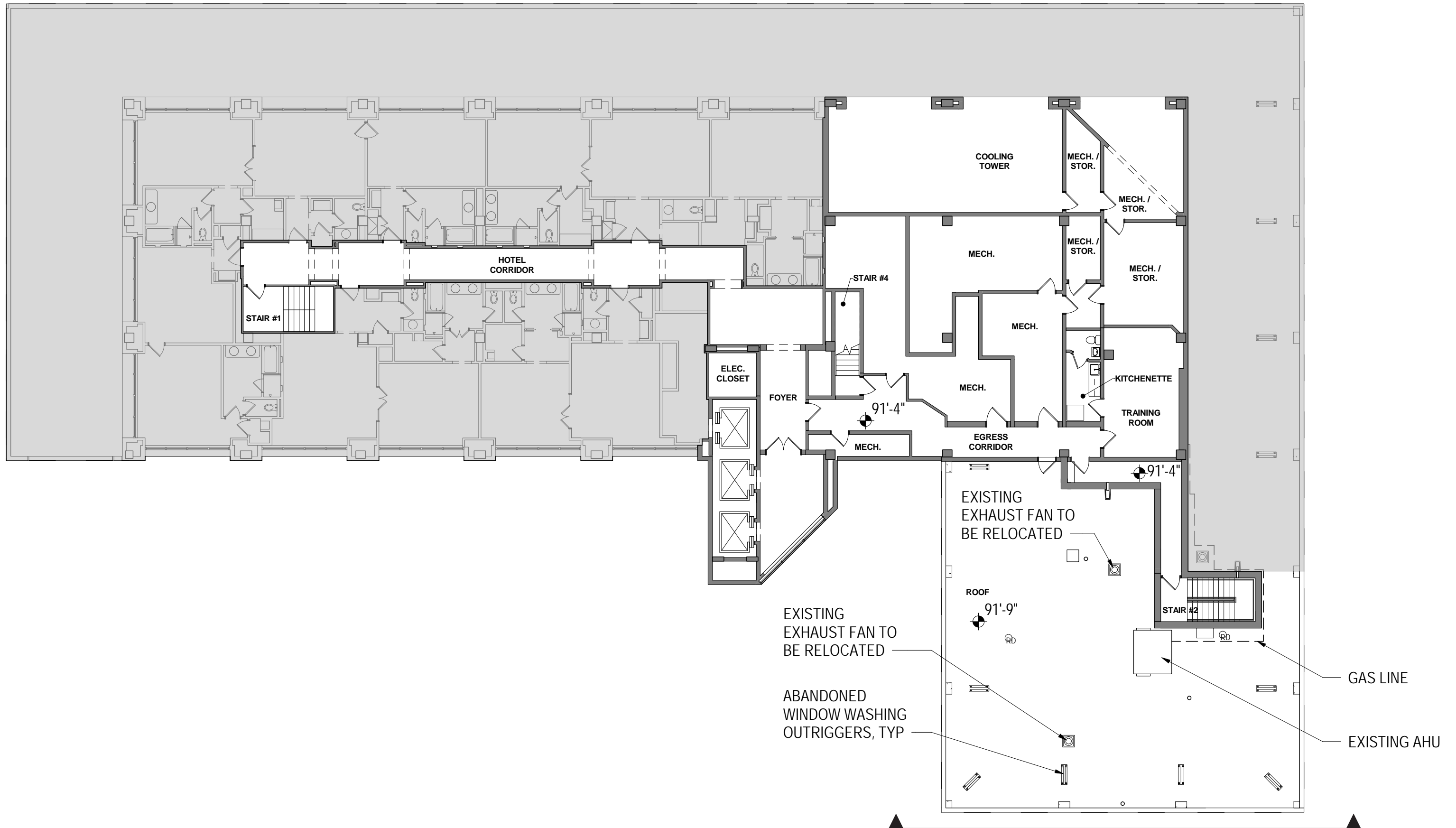
Four Seasons  
Hotel

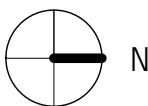
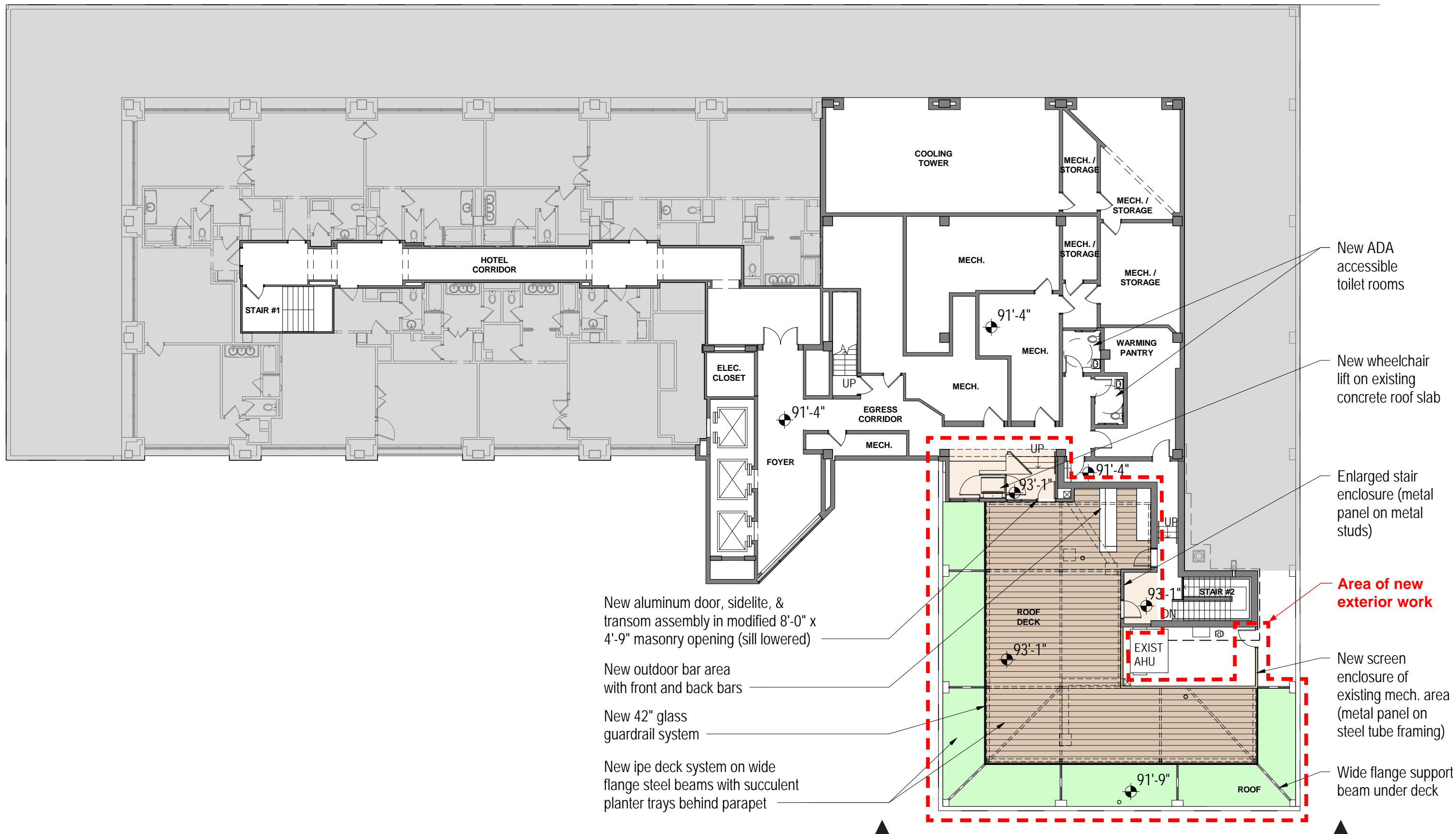


KEY PLAN

C&O Canal









Retractable Shading Structure Over New Wood Deck

