



Reservoir Rd NW

Reservoir Rd NW

Reservoir Rd NW

Reservoir Rd NW

Reservoir Rd NW

35th St NW

35th St NW

35th St NW

35th St NW

Winfield Lane Northwest

Winfield Lane Northwest

1656 35th St NW  
Washington, DC 20007

1

Google



1

2

3

4

5

6

Front of 1656

7

8



1

4

5



6



7



8



7



Window 7 inside view



Basement windows not visible from 35th ST



**BLACK  
LIVES  
MATTER**  
SILENCE = VIOLENCE

Basement windows not visible from 35th ST

10

9



11

12

13

14

Back windows not visible from 35th ST

15

16

17

18



Back windows not visible from 35th ST

11

12

13

14

1656

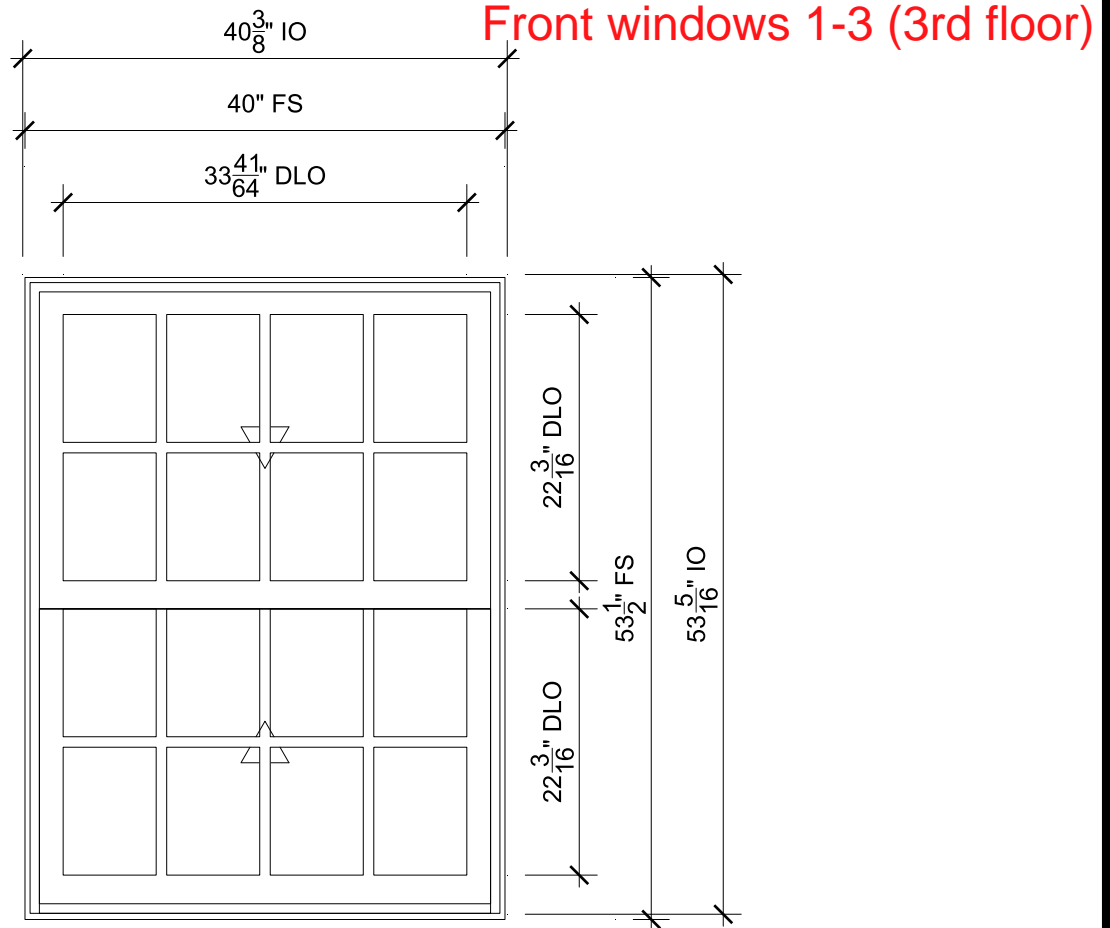
Back windows not visible from 35th ST





Back windows not visible from 35th ST

1654



**06**

SCALE: 3/4" = 1'-0"

1/8 Head

2/8 Jamb

3/8 Sill

4/8 Divided Lite

1/9 Check Rail

## SPECIFICATIONS

Line #: 6

Qty: 3

Product Line: Elevate

Unit Description: Double Hung Insert

Rough Opening: 40 3/8" X 53 5/16"

Frame Size: 40" X 53 1/2"

Sash Opening: 40 3/8" X 53 5/16"

Inside Opening: 40 3/8" X 53 5/16"

Exterior Finish: Stone White

Interior Finish: White

Glass Information: IG, STC/OITC Low E2 w/Argon, Stainless

Divider Type: 7/8" Rectangular SDL W/ Spacer - Stainless

Hardware Type: Sash Lock

Hardware Color: Satin Nickel



PROJ/JOB: PETRI INSERTS / PETRI INSERTS 3.31.22  
 DIST/DEALER: THE J F JOHNSON LUMBER CO-MILLERSVILLE  
 DRAWN: JOE BARTEMUS  
 QUOTE#: ZLV8TBB PK VER: 0003.13.01

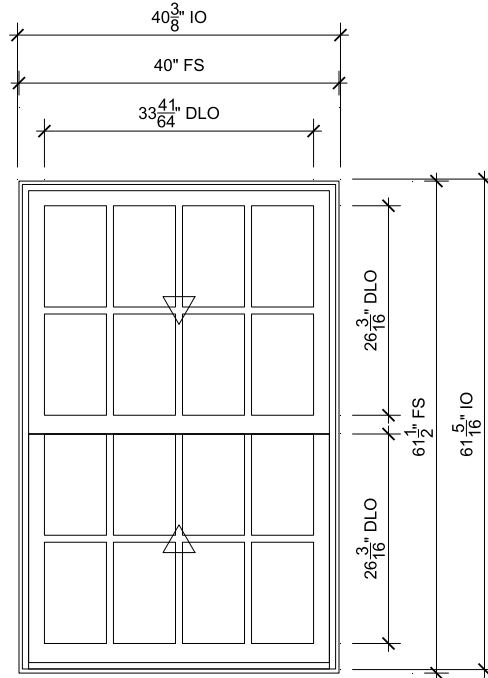
CREATED: 04/06/2022 REVISION:

SHEET

6

OF 9

## Front window 4 (second floor)



**04**

SCALE: 1/2" = 1'-0"

- 1  
8 Head
- 2  
8 Jamb
- 3  
8 Sill
- 4  
8 Divided Lite
- 1  
9 Check Rail

## SPECIFICATIONS

Line #: 4

Qty: 1

Product Line: Elevate

Unit Description: Double Hung Insert

Rough Opening: 40 3/8" X 61 5/16"

Frame Size: 40" X 61 1/2"

Sash Opening: 40 3/8" X 61 5/16"

Inside Opening: 40 3/8" X 61 5/16"

Exterior Finish: Stone White

Interior Finish: White

Glass Information: IG, STC/OITC Low E2 w/Argon, Stainless

Divider Type: 7/8" Rectangular SDL W/ Spacer - Stainless

Hardware Type: Sash Lock

Hardware Color: Satin Nickel



PROJ/JOB: PETRI INSERTS / PETRI INSERTS 3.31.22  
DIST/DEALER: THE J F JOHNSON LUMBER CO-MILLERSVILLE  
DRAWN: JOE BARTEMUS  
QUOTE#: ZLV8TBB PK VER: 0003.13.01

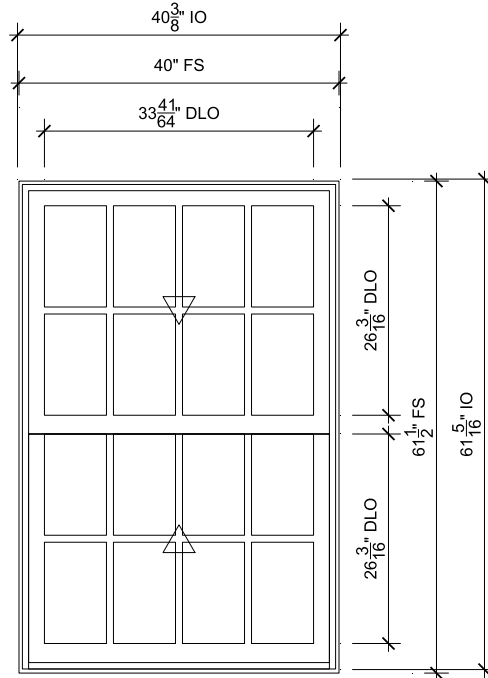
CREATED: 04/06/2022 REVISION:

SHEET

4

OF 9

## Front windows 5-6 (second floor)



**05**

SCALE: 1/2" = 1'-0"

- 1/8 Head
- 2/8 Jamb
- 3/8 Sill
- 4/8 Divided Lite
- 1/9 Check Rail

## SPECIFICATIONS

Line #: 5

Qty: 2

Product Line: Elevate

Unit Description: Double Hung Insert

Rough Opening: 40 3/8" X 61 5/16"

Frame Size: 40" X 61 1/2"

Sash Opening: 40 3/8" X 61 5/16"

Inside Opening: 40 3/8" X 61 5/16"

Exterior Finish: Stone White

Interior Finish: White

Glass Information: IG, STC/OITC Tempered Low E2 w/Argon, Stainless

Divider Type: 7/8" Rectangular SDL W/ Spacer - Stainless

Hardware Type: Sash Lock

Hardware Color: Satin Nickel



PROJ/JOB: PETRI INSERTS / PETRI INSERTS 3.31.22  
 DIST/DEALER: THE J F JOHNSON LUMBER CO-MILLERSVILLE  
 DRAWN: JOE BARTEMUS  
 QUOTE#: ZLV8TBB PK VER: 0003.13.01

CREATED: 04/06/2022 REVISION:

SHEET

5

OF 9

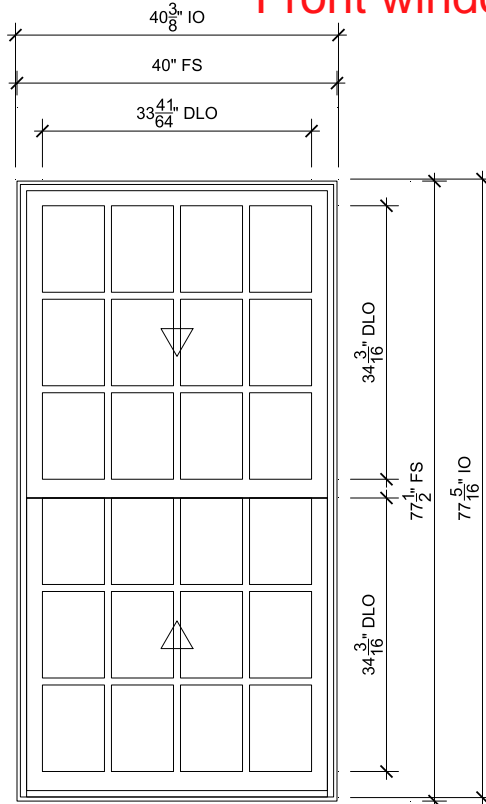
## Front windows 7-8 (1st floor)

Horizontal DLO is 35 10/16"  
in original vs 33 41/64 in new

Top rail is 3" in original and  
2 21/32" in new  
as per drawing next page

Check rail is 1 1/4" in  
original and 2 11/32" in new  
as per drawing next page

Bottom rail is 3 1/4" in original  
and xx" in new  
as per drawing next page



Vertical DLO is 35 10/16"  
in original vs 34 3/16 in new

Side stiles are 1 1/2" in original  
and 1 15/32" in new  
as per drawing next page

**01**

SCALE: 1/2" = 1'-0"

- 1  
8 Head
- 2  
8 Jamb
- 3  
8 Sill
- 4  
8 Divided Lite
- 1  
9 Check Rail

## SPECIFICATIONS

Line #: 1

Qty: 2

Product Line: Elevate

Unit Description: Double Hung Insert

Rough Opening: 40 3/8" X 77 5/16"

Frame Size: 40" X 77 1/2"

Sash Opening: 40 3/8" X 77 5/16"

Inside Opening: 40 3/8" X 77 5/16"

Exterior Finish: Stone White

Interior Finish: White

Glass Information: IG, STC/OITC Low E2 w/Argon, Stainless

Divider Type: 7/8" Rectangular SDL W/ Spacer - Stainless

Hardware Type: Sash Lock

Hardware Color: Satin Nickel

Muntins are 7/8" in original  
and also in new. See two  
pages further for visual.



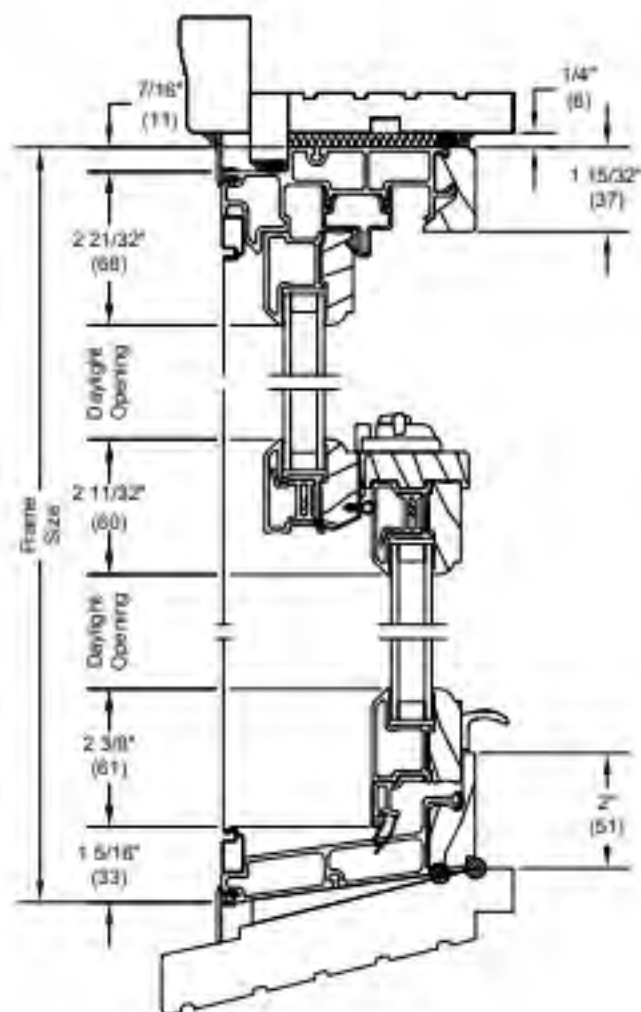
PROJ/JOB: PETRI INSERTS / PETRI INSERTS 3.31.22  
DIST/DEALER: THE J F JOHNSON LUMBER CO-MILLERSVILLE  
DRAWN: JOE BARTEMUS  
QUOTE#: ZLV8TBB PK VER: 0003.13.01

CREATED: 04/06/2022 REVISION:

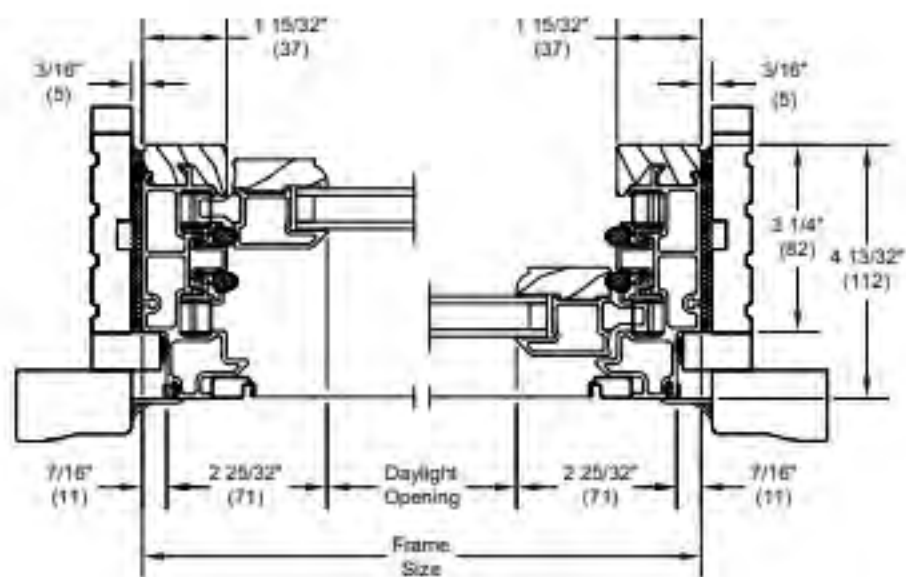
SHEET

1

OF 9



Head Jamb and Sill  
8 Degree Bevel Sill  
Installed in Existing Frame



Jamb  
Installed in Existing Frame



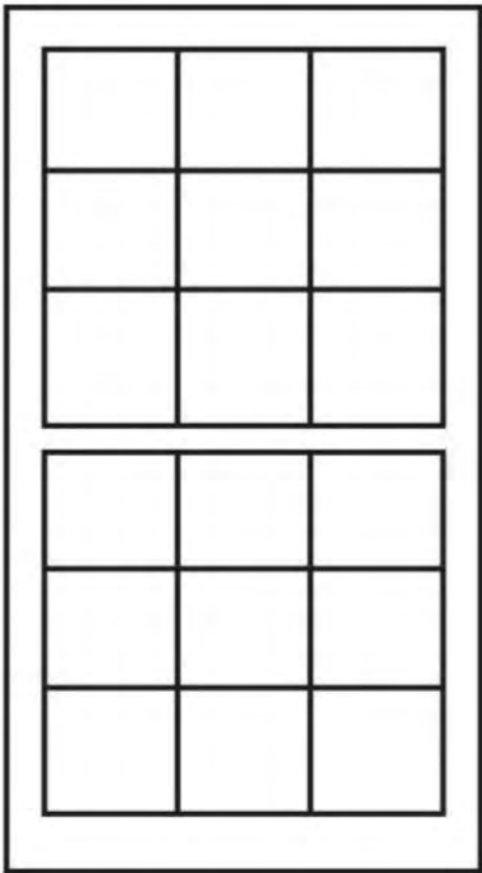
Simulated Divided Lite with Spacer Bar (SDLS)



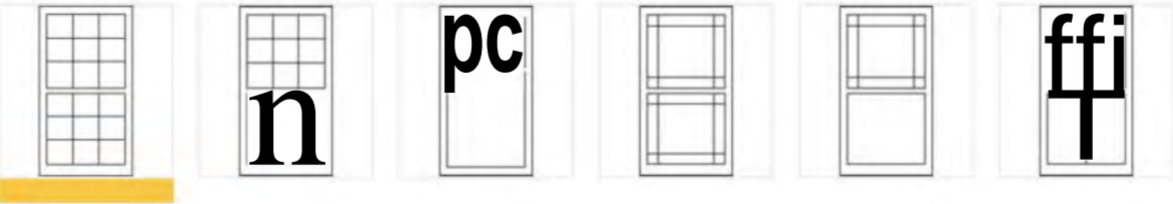
Paired with SDL bars on the exterior of the glass, a spacer bar is installed between the glass, creating an even closer match to the Authentic Divided Lite look.

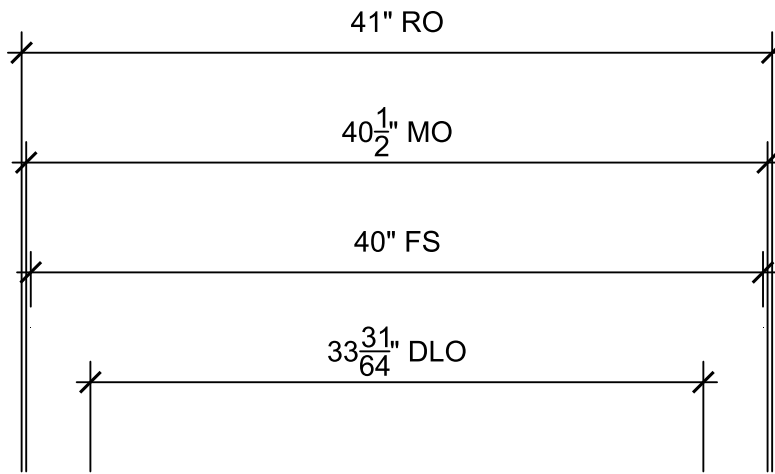
Patterns

Marvin's custom capabilities allow us to create almost any divided lite pattern you can dream up, with combinations of widths, unique profiles, rectangular or radius cuts and more. Choose from an existing lite cut, specify custom divided lites according to a new design or ask our design professionals to assist in creating a pattern for your needs.



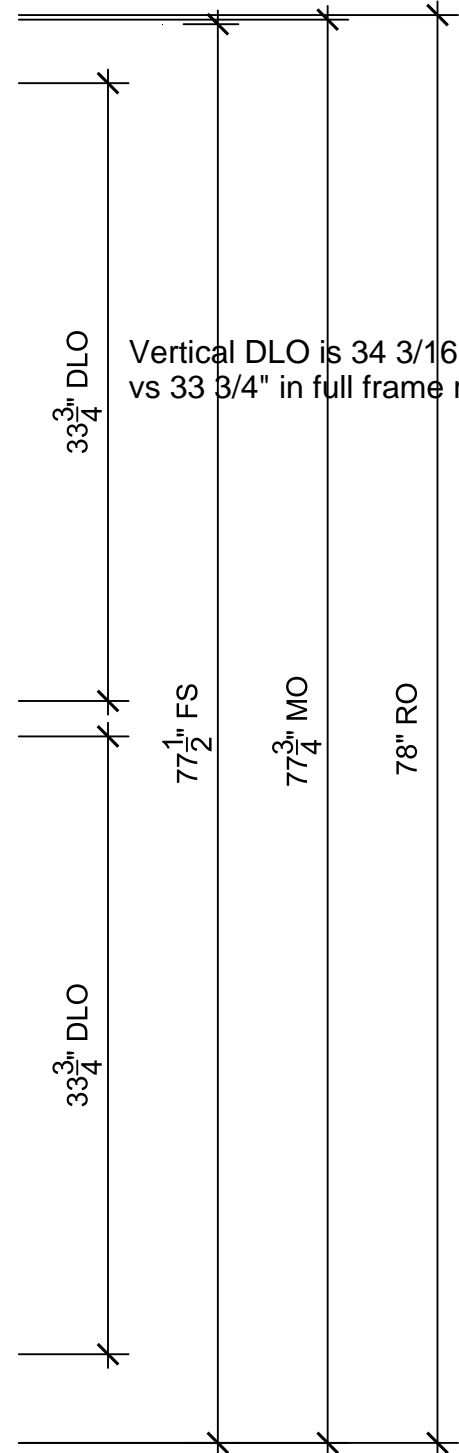
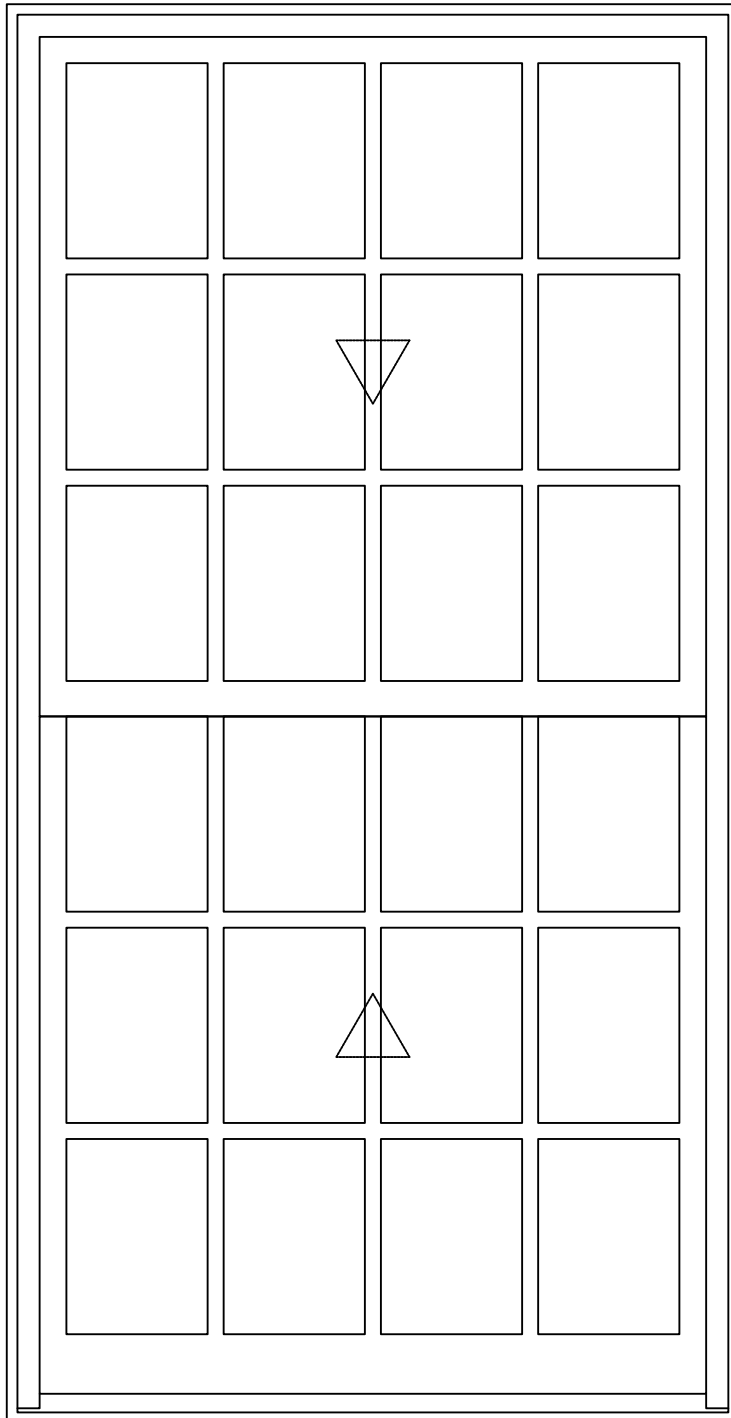
Selected: Rectangular





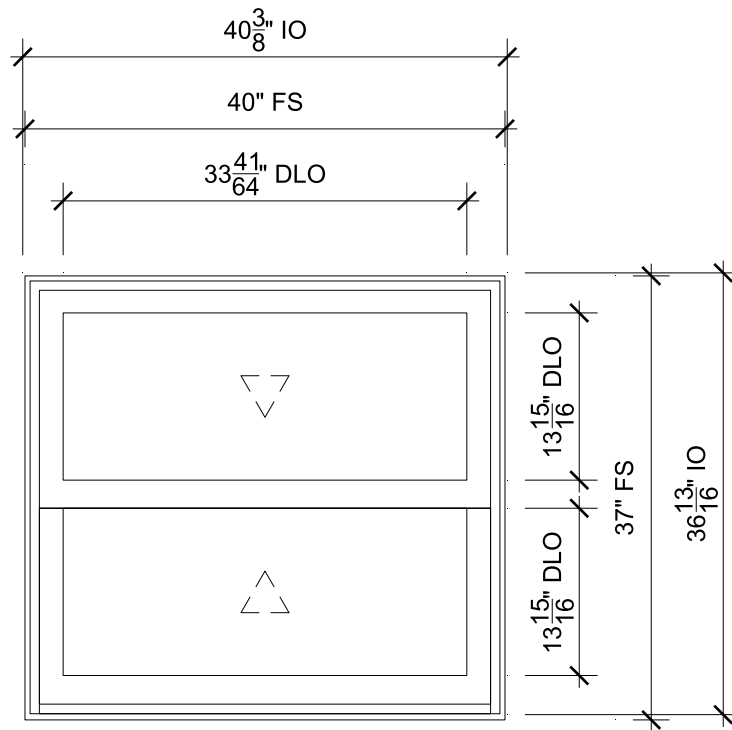
Windows 7-8 as full frame replacement

Horizontal DLO is 33  $\frac{41}{64}$ " in inserts  
vs 33  $\frac{31}{64}$ " in full frame replacement



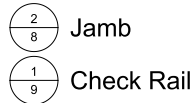
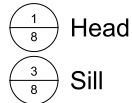
Vertical DLO is 34  $\frac{3}{16}$ " in inserts  
vs 33  $\frac{3}{4}$ " in full frame replacement

## Basement windows 9-10 not visible from 35th St



**02**

SCALE: 3/4" = 1'-0"



## SPECIFICATIONS

Line #: 2

Qty: 2

Product Line: Elevate

Unit Description: Double Hung Insert

Rough Opening: 40 3/8" X 36 13/16"

Frame Size: 40" X 37"

Sash Opening: 40 3/8" X 36 13/16"

Inside Opening: 40 3/8" X 36 13/16"

Exterior Finish: Stone White

Interior Finish: White

Glass Information: IG, STC/OITC Low E2 w/Argon, Stainless

Divider Type: None

Hardware Type: Sash Lock

Hardware Color: Satin Nickel



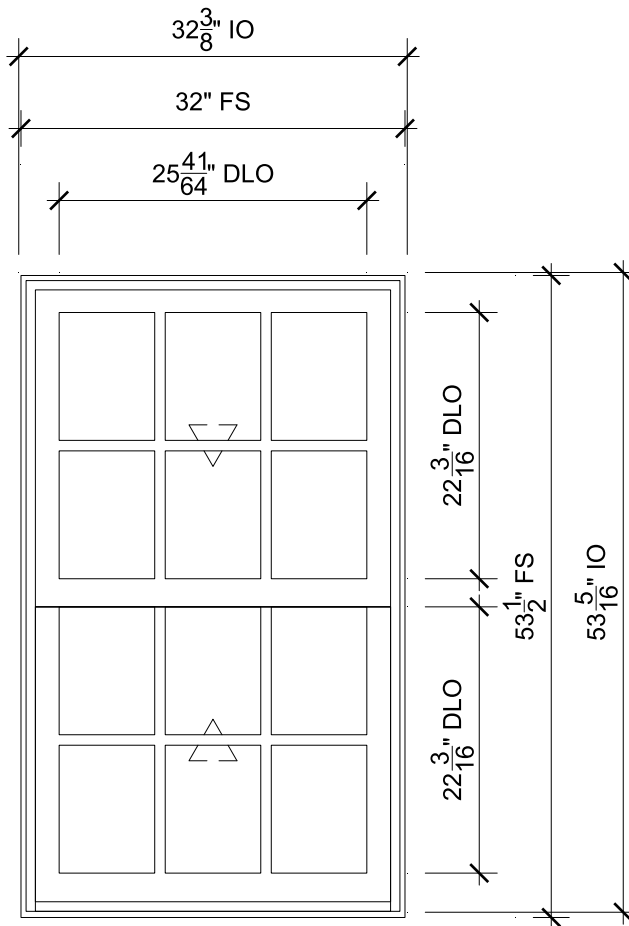
PROJ/JOB: PETRI INSERTS / PETRI INSERTS 3.31.22  
DIST/DEALER: THE J F JOHNSON LUMBER CO-MILLERSVILLE  
DRAWN: JOE BARTEMUS  
QUOTE#: ZLV8TBB PK VER: 0003.13.01

CREATED: 04/06/2022 REVISION:

SHEET

2

OF 9



**07**

SCALE: 3/4" = 1'-0"



Head



Jamb



Sill



Divided Lite



Check Rail

## SPECIFICATIONS

Line #: 7

Qty: 4

**Back windows 11-14 not visible from 35h St**

Product Line: Elevate

Unit Description: Double Hung Insert

Rough Opening: 32 3/8" X 53 5/16"

Frame Size: 32" X 53 1/2"

Sash Opening: 32 3/8" X 53 5/16"

Inside Opening: 32 3/8" X 53 5/16"

Exterior Finish: Stone White

Interior Finish: White

Glass Information: IG, STC/OITC Low E2 w/Argon, Stainless

Divider Type: 7/8" Rectangular SDL W/ Spacer - Stainless

Hardware Type: Sash Lock

Hardware Color: Satin Nickel



PROJ/JOB: PETRI INSERTS / PETRI INSERTS 3.31.22  
DIST/DEALER: THE J F JOHNSON LUMBER CO-MILLERSVILLE  
DRAWN: JOE BARTEMUS  
QUOTE#: ZLV8TBB PK VER: 0003.13.01

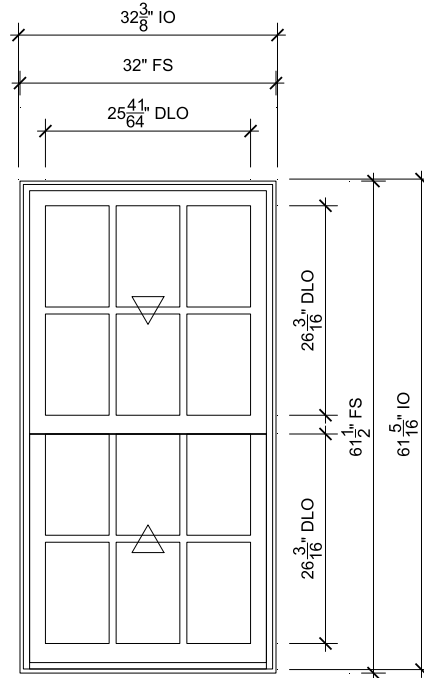
CREATED: 04/06/2022 REVISION:

SHEET

7

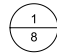
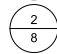
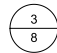
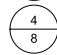
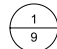
OF 9

Back windows 15-18 not visible from 35h St



**03**

SCALE: 1/2" = 1'-0"

-  Head
-  Jamb
-  Sill
-  Divided Lite
-  Check Rail

## SPECIFICATIONS

Line #: 3

Qty: 4

Product Line: Elevate

Unit Description: Double Hung Insert

Rough Opening: 32 3/8" X 61 5/16"

Frame Size: 32" X 61 1/2"

Sash Opening: 32 3/8" X 61 5/16"

Inside Opening: 32 3/8" X 61 5/16"

Exterior Finish: Stone White

Interior Finish: White

Glass Information: IG, STC/OITC Low E2 w/Argon, Stainless

Divider Type: 7/8" Rectangular SDL W/ Spacer - Stainless

Hardware Type: Sash Lock

Hardware Color: Satin Nickel



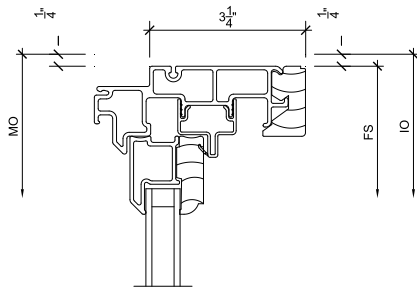
PROJ/JOB: PETRI INSERTS / PETRI INSERTS 3.31.22  
DIST/DEALER: THE J F JOHNSON LUMBER CO-MILLERSVILLE  
DRAWN: JOE BARTEMUS  
QUOTE#: ZLV8TBB PK VER: 0003.13.01

CREATED: 04/06/2022 REVISION:

SHEET

3

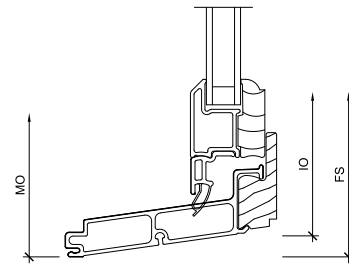
OF 9



1  
8

## Head

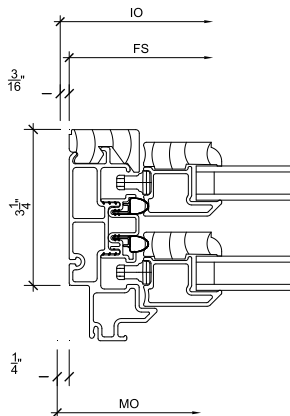
SCALE: 3" = 1'-0"



3  
8

## Sill

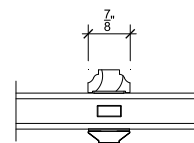
SCALE: 3" = 1'-0"



2  
8

## Jamb

SCALE: 3" = 1'-0"



4  
8

## Divided Lite

SCALE: 3" = 1'-0"



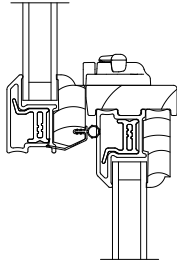
PROJ/JOB: PETRI INSERTS / PETRI INSERTS 3.31.22  
DIST/DEALER: THE J F JOHNSON LUMBER CO-MILLERSVILLE  
DRAWN: JOE BARTEMUS  
QUOTE#: ZLV8TBB PK VER: 0003.13.01

CREATED: 04/06/2022 REVISION:

SHEET

8

OF 9



1  
9

Check Rail

SCALE: 3" = 1'-0"

3  
9

NOT USED

SCALE: 3" = 1'-0"

2  
9

NOT USED

SCALE: 3" = 1'-0"

4  
9

NOT USED

SCALE: 3" = 1'-0"



PROJ/JOB: PETRI INSERTS / PETRI INSERTS 3.31.22  
DIST/DEALER: THE J F JOHNSON LUMBER CO-MILLERSVILLE  
DRAWN: JOE BARTEMUS  
QUOTE#: ZLV8TBB PK VER: 0003.13.01

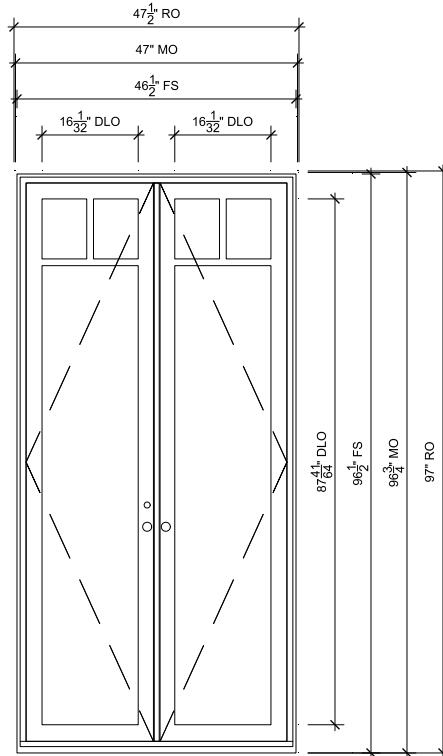
CREATED: 04/06/2022 REVISION:

SHEET

9

OF 9

Back patio doors not visible from 35h St



**ULTIMATE**

SCALE: 3/8" = 1'-0"

- |   |
|---|
| 1 |
| 2 |

 Head
- |   |
|---|
| 2 |
| 2 |

 Jamb
- |   |
|---|
| 3 |
| 2 |

 Sill
- |   |
|---|
| 4 |
| 2 |

 Divided Lite
- |   |
|---|
| 1 |
| 3 |

 Meeting Stile

## SPECIFICATIONS

Line #: 8

Qty: 3

Product Line: Ultimate

Unit Description: Inswing Door (3" Stiles)

Rough Opening: 47 1/2" X 97"

Frame Size: 46 1/2" X 96 1/2"

Sash Opening: 47 1/2" X 97"

Inside Opening: 47 1/2" X 97"

Exterior Finish: Stone White

Interior Finish: Painted Interior Finish - White

Glass Information: Special Glass, Stainless

Divider Type: 1 1/8" Cottage SDL W/ Spacer - Stainless

Hardware Type: Performance Options : None, Multi-Point Lock, Adjustable Hinges

Hardware Color: Satin Nickel PVD



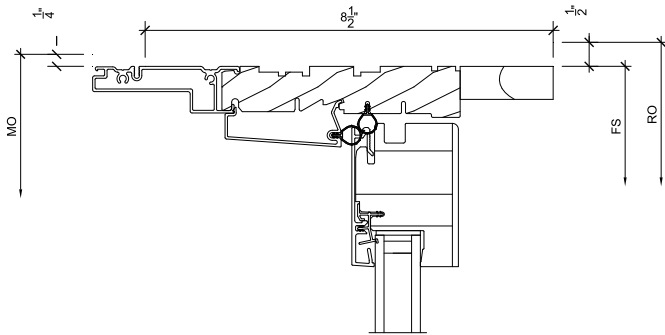
PROJ/JOB: PETRI INSERTS / PETRI INSERTS 3.31.22  
DIST/DEALER: THE J F JOHNSON LUMBER CO-MILLERSVILLE  
DRAWN: JOE BARTEMUS  
QUOTE#: ZLV8TBB PK VER: 0003.13.01

CREATED: 04/06/2022 REVISION:

SHEET

1

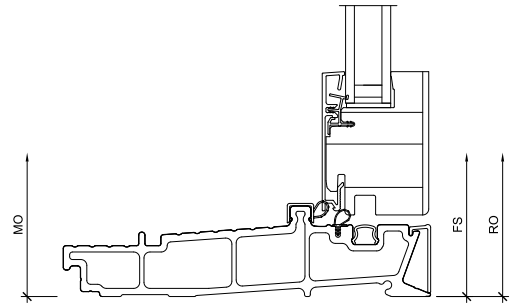
OF 3



1  
2

## Head

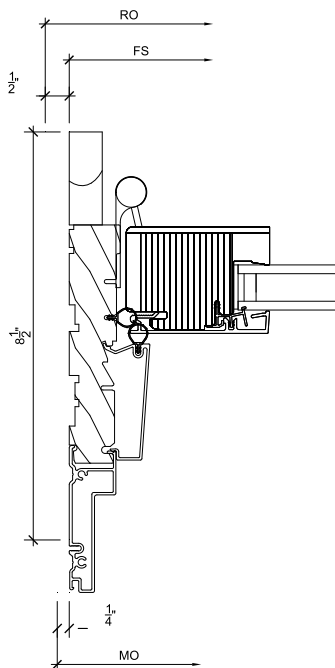
SCALE: 3" = 1'-0"



3  
2

## Sill

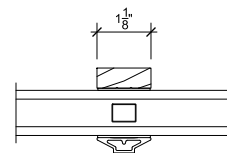
SCALE: 3" = 1'-0"



2  
2

## Jamb

SCALE: 3" = 1'-0"



4  
2

## Divided Lite

SCALE: 3" = 1'-0"



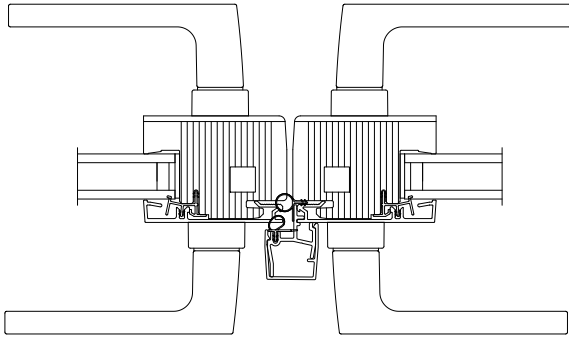
PROJ/JOB: PETRI INSERTS / PETRI INSERTS 3.31.22  
DIST/DEALER: THE J F JOHNSON LUMBER CO-MILLERSVILLE  
DRAWN: JOE BARTEMUS  
QUOTE#: ZLV8TBB PK VER: 0003.13.01

CREATED: 04/06/2022 REVISION:

SHEET

2

OF 3



1  
3

Meeting Stile

SCALE: 3" = 1'-0"

3  
3

NOT USED

SCALE: 3" = 1'-0"

2  
3

NOT USED

SCALE: 3" = 1'-0"

4  
3

NOT USED

SCALE: 3" = 1'-0"



PROJ/JOB: PETRI INSERTS / PETRI INSERTS 3.31.22  
DIST/DEALER: THE J F JOHNSON LUMBER CO-MILLERSVILLE  
DRAWN: JOE BARTEMUS  
QUOTE#: ZLV8TBB PK VER: 0003.13.01

CREATED: 04/06/2022 REVISION:

SHEET

3

OF 3

# PETRI INSERTS

## PETRI INSERTS 3.31.22

Quote #: ZLV8TBB

A Proposal for Window and Door Products prepared for:

**Job Site:**  
21410

**Shipping Address:**

THE J F JOHNSON LUMBER CO-EDGEWATER  
3120 SOLOMONS ISLAND RD  
EDGEWATER, MD 21037-1701



**MARVIN** 

JOE BARTEMUS  
THE J F JOHNSON LUMBER  
CO-EDGEWATER  
PO BOX 248  
MILLERSVILLE, MD 21108-0248  
Phone: (410) 956-0400  
Fax: (410) 956-1350  
Email: jbartemus@johnsonlumber.biz

This report was generated on 3/31/2022 2:15:27 PM using the Marvin Order Management System, version 0003.13.01 (Current). Price in USD. Unit availability and price are subject to change. Dealer terms and conditions may apply.

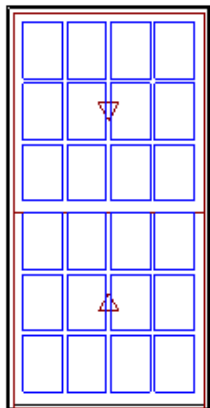
**Featuring products from:**

**MARVIN** 

## LINE ITEM QUOTES

The following is a schedule of the windows and doors for this project. For additional unit details, please see Line Item Quotes. Additional charges, tax or Terms and Conditions may apply. Detail pricing is per unit.

Line #1	Mark Unit:	Net Price:		
Qty: 2		Ext. Net Price:	USD	



As Viewed From The Exterior

**Entered As:** FS  
**FS** 40" X 77 1/2"  
**IO** 40 3/8" X 77 5/16"  
**Egress Information**  
Width: 36 11/32" Height: 33 17/64"  
Net Clear Opening: 8.40 SqFt  
**Performance Information**  
U-Factor: 0.29  
Solar Heat Gain Coefficient: 0.28  
Visible Light Transmittance: 0.46  
Condensation Resistance: 55  
CPD Number: MAR-N-424-00538-00001  
ENERGY STAR: NC  
**Performance Grade**  
Licensee #1123  
AAMA/WDMA/CSA/101/ I.S.2/A440-08  
LC-PG40 1067X2146 mm (42X84.5 in)  
LC-PG40 DP +40/-40  
FL6525

Stone White Exterior  
White Interior .....  
Elevate Double Hung Insert .....  
Frame Size 40" X 77 1/2"  
Inside Opening 40 3/8" X 77 5/16"  
8 Degree Frame Bevel  
Glass Add For All Sash .....  
Top Sash  
Stone White Exterior  
White Interior  
IG  
STC/OITC Low E2 w/Argon  
Stainless Perimeter and Spacer Bar  
7/8" SDL - With Spacer Bar - Stainless .....  
Rectangular 4W3H  
Stone White Ext - White Int  
Bottom Sash  
Stone White Exterior  
White Interior  
IG  
STC/OITC Low E2 w/Argon  
Stainless Perimeter and Spacer Bar  
7/8" SDL - With Spacer Bar - Stainless .....  
Rectangular 4W3H  
Stone White Ext - White Int  
White Weather Strip Package  
1 Satin Nickel Sash Lock .....  
No Screen  
3 1/4" Jamb  
Thru Jamb Installation  
Existing Sill Angle 6  
\*\*\*Note: Divided lite cut alignment may not be accurately represented in the OMS drawing. Please consult your local representative for exact specifications.  
\*\*\*Note: Frame Size shown is measured from the exterior of the unit.  
\*\*\*Note: Unit Availability and Price is Subject to Change

Windows 7-8

Initials required

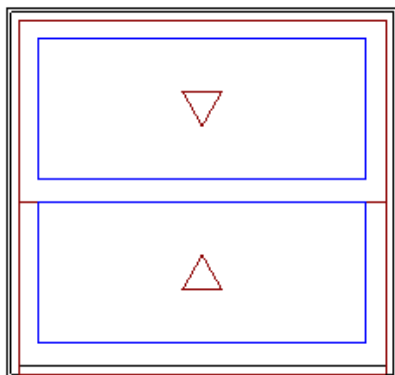
Seller: \_\_\_\_\_

Buyer: \_\_\_\_\_

Line #2	Mark Unit:	Net Price:		
Qty: 2		Ext. Net Price:	USD	



Stone White Exterior  
White Interior .....  
Elevate Double Hung Insert .....  
Frame Size 40" X 37"  
Inside Opening 40 3/8" X 36 13/16"  
8 Degree Frame Bevel  
Glass Add For All Sash .....  
Top Sash  
Stone White Exterior  
White Interior  
IG - 1 Lite  
STC/OITC Low E2 w/Argon  
Stainless Perimeter Bar



As Viewed From The Exterior

Entered As: FS

FS 40" X 37"

IO 40 3/8" X 36 13/16"

**Egress Information**

Width: 36 11/32" Height: 13 1/64"

Net Clear Opening: 3.28 SqFt

**Performance Information**

U-Factor: 0.29

Solar Heat Gain Coefficient: 0.31

Visible Light Transmittance: 0.52

Condensation Resistance: 55

CPD Number: MAR-N-424-00490-00001

ENERGY STAR: NC

**Performance Grade**

Licensee #1123

AAMA/WDMA/CSA/101/ I.S.2/A440-08

LC-PG40 1067X2146 mm (42X84.5 in)

LC-PG40 DP +40/-40

FL6525

Bottom Sash

Stone White Exterior

White Interior

IG - 1 Lite

STC/OITC Low E2 w/Argon

Stainless Perimeter Bar

White Weather Strip Package

1 Satin Nickel Sash Lock

No Screen

3 1/4" Jambs

Thru Jamb Installation

Existing Sill Angle 6

\*\*\*Note: Frame Size shown is measured from the exterior of the unit.

\*\*\*Note: Unit Availability and Price is Subject to Change

**Basement Windows 9-10**  
**Not visible from front**

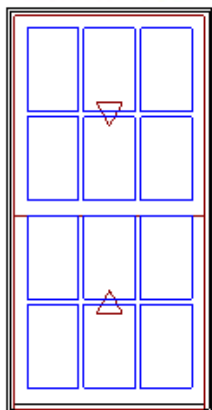
Initials required

Seller: \_\_\_\_\_

Buyer: \_\_\_\_\_

Line #3	Mark Unit:	Net Price:	
Qty: 4		Ext. Net Price:	USD

**MARVIN** 



As Viewed From The Exterior

Entered As: FS

FS 32" X 61 1/2"

IO 32 3/8" X 61 5/16"

**Egress Information**

Width: 28 11/32" Height: 25 17/64"

Net Clear Opening: 4.97 SqFt

**Performance Information**

U-Factor: 0.29

Solar Heat Gain Coefficient: 0.28

Visible Light Transmittance: 0.46

Stone White Exterior

White Interior

Elevate Double Hung Insert

Frame Size 32" X 61 1/2"

Inside Opening 32 3/8" X 61 5/16"

8 Degree Frame Bevel

Glass Add For All Sash

Top Sash

Stone White Exterior

White Interior

IG

STC/OITC Low E2 w/Argon

Stainless Perimeter and Spacer Bar

7/8" SDL - With Spacer Bar - Stainless

Rectangular 3W2H

Stone White Ext - White Int

Bottom Sash

Stone White Exterior

White Interior

IG

STC/OITC Low E2 w/Argon

Stainless Perimeter and Spacer Bar

7/8" SDL - With Spacer Bar - Stainless

Rectangular 3W2H

Stone White Ext - White Int

White Weather Strip Package

1 Satin Nickel Sash Lock

No Screen

3 1/4" Jambs

Thru Jamb Installation

Existing Sill Angle 6

**Windows 15-18**  
**Not visible from 35th St**

Condensation Resistance: 55  
CPD Number: MAR-N-424-00538-00001  
ENERGY STAR: NC  
**Performance Grade**  
Licensee #1123  
AAMA/WDMA/CSA/101/ I.S.2/A440-08  
LC-PG40 1067X2146 mm (42X84.5 in)  
LC-PG40 DP +40/-40  
FL6525

\*\*\*Note: Divided lite cut alignment may not be accurately represented in the OMS drawing. Please consult your local representative for exact specifications.  
\*\*\*Note: Frame Size shown is measured from the exterior of the unit.  
\*\*\*Note: Unit Availability and Price is Subject to Change

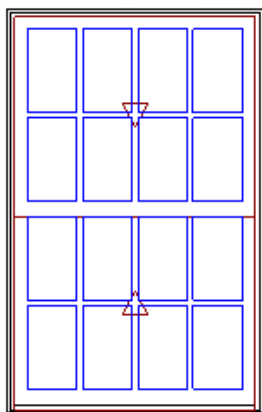
Initials required

Seller: \_\_\_\_\_

Buyer: \_\_\_\_\_

Line #4	Mark Unit:	Net Price:		
Qty: 1		Ext. Net Price:	USD	

**MARVIN** 



As Viewed From The Exterior

**Entered As:** FS  
**FS** 40" X 61 1/2"  
**IO** 40 3/8" X 61 5/16"  
**Egress Information**  
Width: 36 11/32" Height: 25 17/64"  
Net Clear Opening: 6.38 SqFt  
**Performance Information**  
U-Factor: 0.29  
Solar Heat Gain Coefficient: 0.28  
Visible Light Transmittance: 0.46  
Condensation Resistance: 55  
CPD Number: MAR-N-424-00538-00001  
ENERGY STAR: NC  
**Performance Grade**  
Licensee #1123  
AAMA/WDMA/CSA/101/ I.S.2/A440-08  
LC-PG40 1067X2146 mm (42X84.5 in)  
LC-PG40 DP +40/-40  
FL6525

Stone White Exterior  
White Interior .....  
Elevate Double Hung Insert .....  
Frame Size 40" X 61 1/2" .....  
Inside Opening 40 3/8" X 61 5/16"  
8 Degree Frame Bevel  
Glass Add For All Sash .....  
Top Sash  
Stone White Exterior  
White Interior  
IG  
STC/OITC Low E2 w/Argon  
Stainless Perimeter and Spacer Bar  
7/8" SDL - With Spacer Bar - Stainless .....  
Rectangular 4W2H  
Stone White Ext - White Int  
Bottom Sash  
Stone White Exterior  
White Interior  
IG  
STC/OITC Low E2 w/Argon  
Stainless Perimeter and Spacer Bar  
7/8" SDL - With Spacer Bar - Stainless .....  
Rectangular 4W2H  
Stone White Ext - White Int  
White Weather Strip Package  
1 Satin Nickel Sash Lock .....  
No Screen  
3 1/4" Jambs  
Thru Jamb Installation  
Existing Sill Angle 6

**Window 4**

\*\*\*Note: Divided lite cut alignment may not be accurately represented in the OMS drawing. Please consult your local representative for exact specifications.  
\*\*\*Note: Frame Size shown is measured from the exterior of the unit.  
\*\*\*Note: Unit Availability and Price is Subject to Change

Initials required

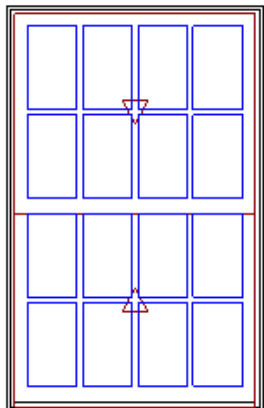
Seller: \_\_\_\_\_

Buyer: \_\_\_\_\_

Line #5	Mark Unit:	Net Price:		
Qty: 2		Ext. Net Price:	USD	

**MARVIN** 

Stone White Exterior  
White Interior .....  
Elevate Double Hung Insert .....  
Frame Size 40" X 61 1/2" .....  
Inside Opening 40 3/8" X 61 5/16"  
8 Degree Frame Bevel  
Glass Add For All Sash .....



As Viewed From The Exterior

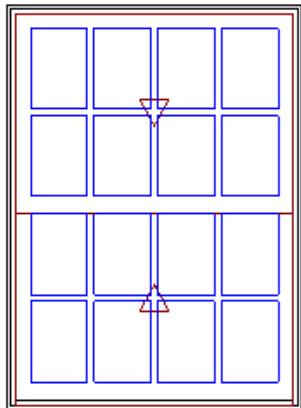
Entered As: FS  
FS 40" X 61 1/2"  
IO 40 3/8" X 61 5/16"  
**Egress Information**  
Width: 36 11/32" Height: 25 17/64"  
Net Clear Opening: 6.38 SqFt  
**Performance Information**  
U-Factor: 0.29  
Solar Heat Gain Coefficient: 0.28  
Visible Light Transmittance: 0.46  
Condensation Resistance: 55  
CPD Number: MAR-N-424-00538-00001  
ENERGY STAR: NC  
**Performance Grade**  
Licensee #1123  
AAMA/WDMA/CSA/101/ I.S.2/A440-08  
LC-PG40 1067X2146 mm (42X84.5 in)  
LC-PG40 DP +40/-40  
FL6525

Top Sash  
Stone White Exterior  
White Interior  
IG  
STC/OITC Tempered Low E2 w/Argon  
Stainless Perimeter and Spacer Bar  
7/8" SDL - With Spacer Bar - Stainless .....  
Rectangular 4W2H  
Stone White Ext - White Int  
Bottom Sash  
Stone White Exterior  
White Interior  
IG  
STC/OITC Tempered Low E2 w/Argon  
Stainless Perimeter and Spacer Bar  
7/8" SDL - With Spacer Bar - Stainless .....  
Rectangular 4W2H  
Stone White Ext - White Int  
White Weather Strip Package  
1 Satin Nickel Sash Lock .....  
No Screen  
3 1/4" Jambs  
Thru Jamb Installation  
Existing Sill Angle 6  
\*\*\*Note: Divided lite cut alignment may not be accurately represented in the  
OMS drawing. Please consult your local representative for exact specifications.  
\*\*\*Note: Frame Size shown is measured from the exterior of the unit.  
\*\*\*Note: Unit Availability and Price is Subject to Change

Windows 5-6

Initials required  
Seller: \_\_\_\_\_  
Buyer: \_\_\_\_\_

Line #6	Mark Unit:	Net Price:	
Qty: 3		Ext. Net Price:	USD



As Viewed From The Exterior

Entered As: FS  
FS 40" X 53 1/2"  
IO 40 3/8" X 53 5/16"  
**Egress Information**  
Width: 36 11/32" Height: 21 17/64"  
Net Clear Opening: 5.37 SqFt  
**Performance Information**  
U-Factor: 0.29  
Solar Heat Gain Coefficient: 0.28

Stone White Exterior  
White Interior .....  
Elevate Double Hung Insert .....  
Frame Size 40" X 53 1/2"  
Inside Opening 40 3/8" X 53 5/16"  
8 Degree Frame Bevel  
Glass Add For All Sash .....  
Top Sash  
Stone White Exterior  
White Interior  
IG  
STC/OITC Low E2 w/Argon  
Stainless Perimeter and Spacer Bar  
7/8" SDL - With Spacer Bar - Stainless .....  
Rectangular 4W2H  
Stone White Ext - White Int  
Bottom Sash  
Stone White Exterior  
White Interior  
IG  
STC/OITC Low E2 w/Argon  
Stainless Perimeter and Spacer Bar  
7/8" SDL - With Spacer Bar - Stainless .....  
Rectangular 4W2H  
Stone White Ext - White Int  
White Weather Strip Package  
1 Satin Nickel Sash Lock .....  
No Screen  
3 1/4" Jambs  
Thru Jamb Installation

Windows 1-3

Visible Light Transmittance: 0.46  
Condensation Resistance: 55  
CPD Number: MAR-N-424-00538-00001  
ENERGY STAR: NC

**Performance Grade**

Licensee #1123  
AAMA/WDMA/CSA/101/ I.S.2/A440-08  
LC-PG40 1067X2146 mm (42X84.5 in)  
LC-PG40 DP +40/-40  
FL6525

Existing Sill Angle 6

\*\*\*Note: Divided lite cut alignment may not be accurately represented in the OMS drawing. Please consult your local representative for exact specifications.

\*\*\*Note: Frame Size shown is measured from the exterior of the unit.

\*\*\*Note: Unit Availability and Price is Subject to Change

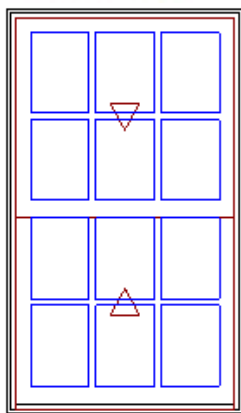
Initials required

Seller: \_\_\_\_\_

Buyer: \_\_\_\_\_

Line #7	Mark Unit:	Net Price:	
Qty: 4		Ext. Net Price:	USD

**MARVIN** 



As Viewed From The Exterior

Entered As: FS

FS 32" X 53 1/2"

IO 32 3/8" X 53 5/16"

**Egress Information**

Width: 28 11/32" Height: 21 17/64"

Net Clear Opening: 4.19 SqFt

**Performance Information**

U-Factor: 0.29

Solar Heat Gain Coefficient: 0.28

Visible Light Transmittance: 0.46

Condensation Resistance: 55

CPD Number: MAR-N-424-00538-00001

ENERGY STAR: NC

**Performance Grade**

Licensee #1123

AAMA/WDMA/CSA/101/ I.S.2/A440-08

LC-PG40 1067X2146 mm (42X84.5 in)

LC-PG40 DP +40/-40

FL6525

Stone White Exterior

White Interior

Elevate Double Hung Insert

Frame Size 32" X 53 1/2"

Inside Opening 32 3/8" X 53 5/16"

8 Degree Frame Bevel

Glass Add For All Sash

Top Sash

Stone White Exterior

White Interior

IG

STC/OITC Low E2 w/Argon

Stainless Perimeter and Spacer Bar

7/8" SDL - With Spacer Bar - Stainless

Rectangular 3W2H

Stone White Ext - White Int

Bottom Sash

Stone White Exterior

White Interior

IG

STC/OITC Low E2 w/Argon

Stainless Perimeter and Spacer Bar

7/8" SDL - With Spacer Bar - Stainless

Rectangular 3W2H

Stone White Ext - White Int

White Weather Strip Package

1 Satin Nickel Sash Lock

No Screen

3 1/4" Jamb

Thru Jamb Installation

Existing Sill Angle 6

\*\*\*Note: Divided lite cut alignment may not be accurately represented in the OMS drawing. Please consult your local representative for exact specifications.

\*\*\*Note: Frame Size shown is measured from the exterior of the unit.

\*\*\*Note: Unit Availability and Price is Subject to Change

**Windows 11-14  
Not visible from 35th St**

Initials required

Seller: \_\_\_\_\_

Buyer: \_\_\_\_\_

Line #8	Mark Unit: ULTIMATE	Net Price:	
Qty: 3		Ext. Net Price:	USD

**MARVIN** 

Stone White Clad Exterior

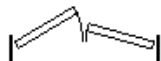
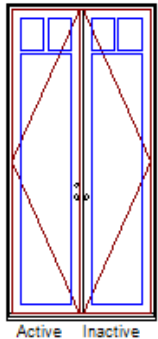
Painted Interior Finish - White - Pine Interior

Ultimate Inswing Door (3" Stiles) 6 9/16" - XX Left Hand

Frame Size 46 1/2" X 96 1/2"

Rough Opening 47 1/2" X 97"

Left Panel



As Viewed From The Exterior

Entered As: FS

MO 47" X 96 3/4"

FS 46 1/2" X 96 1/2"

RO 47 1/2" X 97"

**Egress Information**

Width: 39 1/16" Height: 92 27/32"

Net Clear Opening: 25.18 SqFt

**Performance Information**

Product Performance Information is currently unavailable in the OMS for this product and glazing option. To request product performance information not in the OMS, contact your Marvin representative or submit an Assistance Request.

**Performance Grade**

No Performance Grade Information available.

OM 22" X 93 39/64"  
Stone White Clad Sash Exterior  
Painted Interior Finish - White - Pine Sash Interior  
IG  
Special Glass  
Stainless Perimeter and Spacer Bar .....  
Square 1 1/8" SDL - With Spacer Bar - Stainless .....  
Cottage - Special Cut 2W1H  
3 Rect Lites  
10" DLO Height  
Stone White Clad Ext - Painted Interior Finish - White - Pine Int  
Square Interior Glazing Profile  
Right Panel  
OM 22" X 93 39/64"  
Stone White Clad Sash Exterior  
Painted Interior Finish - White - Pine Sash Interior  
IG  
Special Glass  
Stainless Perimeter and Spacer Bar .....  
Square 1 1/8" SDL - With Spacer Bar - Stainless .....  
Cottage - Special Cut 2W1H  
3 Rect Lites  
10" DLO Height  
Stone White Clad Ext - Painted Interior Finish - White - Pine Int  
Square Interior Glazing Profile  
#GLASS MAKEUP EXT 1/4" TEMP LOW E2 / INT 1/4" TEMP CLEAR W/ARGON .....  
Minimalist Handle Lever(s)  
Multi-Point Lock on Active Panel  
Satin Nickel PVD Active Exterior Handle Set on Active Panel Keyed .....  
Satin Nickel PVD Active Interior Handle Set on Active Panel  
Multi-Point Lock on Inactive Panel  
Satin Nickel PVD Inactive Exterior Handle Set on Inactive Panel .....  
Satin Nickel PVD Inactive Interior Handle Set on Inactive Panel  
Satin Nickel PVD Adjustable Hinges 3 Per Panel- .....  
Bronze Ultrex Sill  
Black Weather Strip

8 1/2" Jambs .....  
Thru Jamb Installation

# Non system generated Pricing

\*\*\*Note: Units with Capillary tubes will not have Argon gas.

\*\*\*Note: Because of the jamb extension, this door may not open beyond 90 degrees.

\*\*\*Note: Unit Availability and Price is Subject to Change

**Patio Doors  
Not visible from alley  
or 35th Street**

Initials required

Seller: \_\_\_\_\_

Buyer: \_\_\_\_\_

Project Subtotal Net Price: USD

6.000% Sales Tax: USD

Project Total Net Price: USD

## PRODUCT AND PERFORMANCE INFORMATION

NFRC energy ratings and values may vary depending on the exact configuration of glass thickness used on the unit. This data may change over time due to ongoing product changes or updated test results or requirements.

The National Fenestration Rating Council (NFRC) has developed and operates a uniform national rating system for the energy performance of fenestration products, including windows and doors. For additional information regarding this rating system, see [www.nfrc.org](http://www.nfrc.org).

NFRC energy values and ratings may change over time due to ongoing product changes, updated test results or requirements.

Review the map below to determine if your units meet ENERGY STAR for your location.

