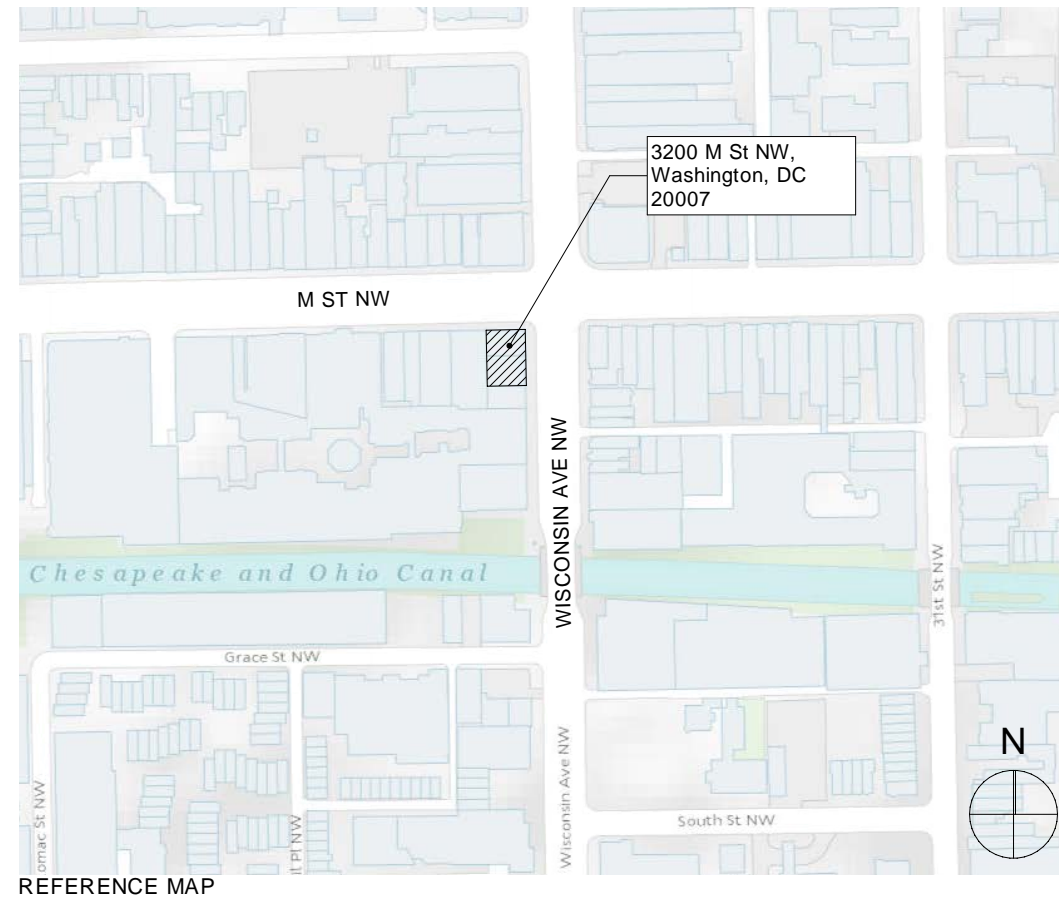




Georgetown

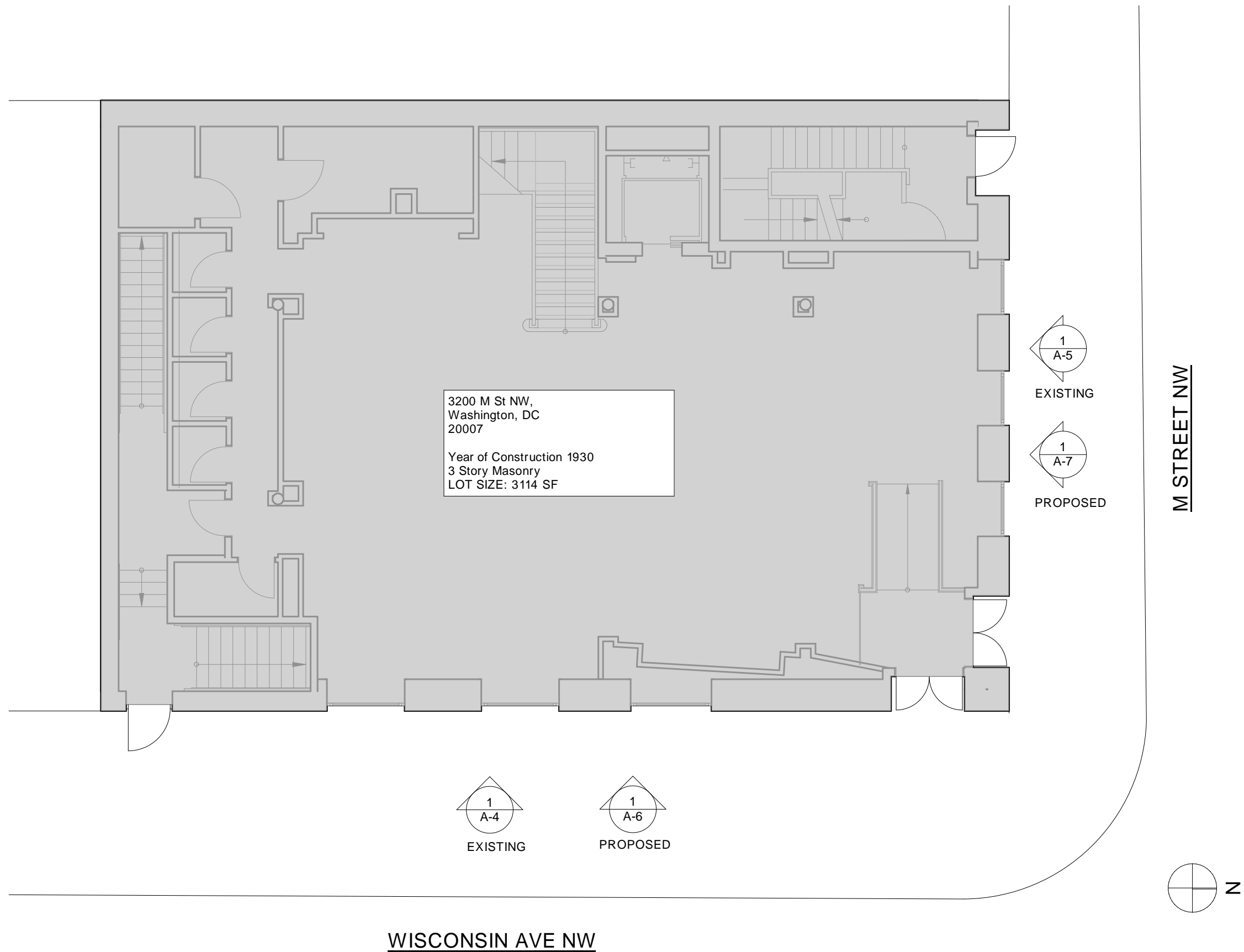
3200 M Street, NW, Washington DC 20007



Proposed Scope Narrative

Proposed exterior work at 3200 street NW, Washington DC. for a new retail tenant:

1. Remove and eliminate existing outdoor lighting to reduce illumination towards sidewalk and street by removing 5 goose neck lighting locations and patch wall to match where they are removed.
2. Replace existing (4) sconces in support of reduced lighting with more efficient and up to date units using less electricity. New sconces are indirect light as opposed to existing direct lighting sconces which will reduce lighting levels on street - see lighting summary sheet A-8
3. Replace two existing pin-mounted signs currently illuminated with gooseneck lighting with halo-lit lighting that limits illumination only to the sign without adding illumination to the sidewalk or street
4. On M street, update existing plaque location from current tenant name and logo to new tenant name and logo. No change in size or location proposed to existing plaques maintaining traditional look of high-visibility street corner. Remove existing plaque of same character on Wisconsin street.
5. Repaint M street and Wisconsin street-facing exterior walls, window frames, doors, and trim work to provide clean fresh look consistent with Old Georgetown





EAST ELEVATION (PHOTO FROM WISCONSIN AVE NW)



NORTH ELEVATION (PHOTO FROM M STREET NW)



EAST ENTRANCE

PROPOSAL INCLUDES REPLACING EXISTING SIGNAGE WITH HALO LIT SIGNAGE (X2)

PROPOSAL INCLUDES REMOVAL OF THIS PLAQUE, PATCH AND PAINT



NORTH ENTRANCE

PROPOSAL INCLUDES REMOVAL OF EXISTING LARGE GOOSENECK LIGHTS (X5)

PROPOSAL INCLUDES EXISTING SCONCES LIGHTING TO BE REPLACED (X4)

PROPOSAL INCLUDES REPLACING EXISTING PLAQUE WITH NEW BRAND LOGO THIS LOCATION, BLACK PLATE WITH WHITE TEXT, SAME AS EXISTING



1 EXISTING EAST SIDE ELEVATION
SCALE: 3/16" = 1'-0"

REMOVE EXISTING GOOSE
NECK LIGHTS TYP. PATCH
AND MATCH (E) WALL

REMOVE EXISTING PIN
MOUNTED BRAND SIGN

REMOVE EXISTING
SCONCES TYP. PATCH AND
MATCH (E) WALL

REMOVE AND REPLACE
EXISTING PLAQUE WITH
NEW BRAND LOGO IN KIND



1

EXISTING NORTH SIDE ELEVATION

SCALE: 3/16" = 1'-0"

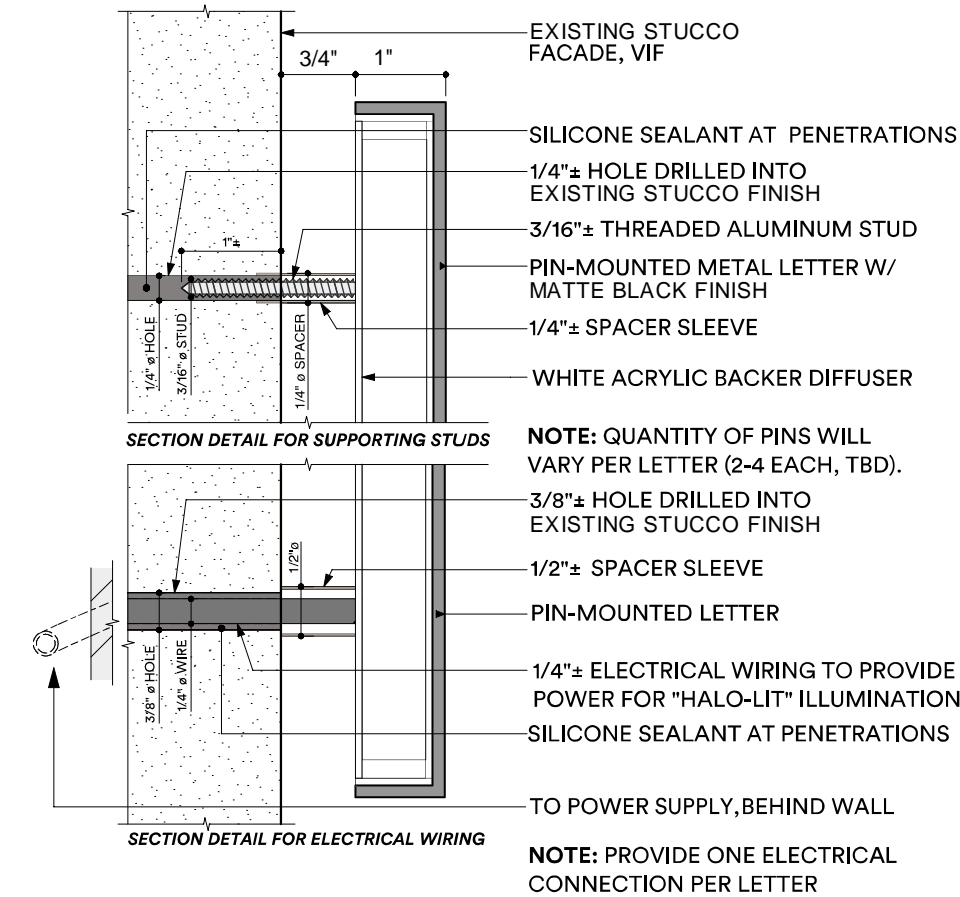
EXISTING ELEVATION



1

PROPOSED EAST SIDE ELEVATION

SCALE: 3/16" = 1'-0"



2 HALO SIGN
SCALE: 6" = 1'-0"

FINISH SCHEDULE		Note: See Specifications for further information.			
ITEM	LABEL	MATERIAL	MANUFACTURER	SPECIFICATION	REMARKS
METAL	MT-2	Metal	Sign Vendor	Powder Coat Finish, Matte Black	
PAINT	P-E1	Exterior Paint	Farrow and Ball	Color: Strong White (2001)	prepare existing surface as required.
	P-E2	Exterior Paint (doors, windows, trim)	Farrow and Ball	Color: Ammonite (274)	prepare existing surface as required.

- (E) CORNICE TO REMAIN
- ALL (E) TRIM TO REMAIN
- ALL (E) WINDOWS TO REMAIN
- P-E1
PAINT (E) BRICK, TYP.
- P-E2
PAINT (E) TRIM, ARCHITECTURAL DETAILING, DOORS, AND WINDOWS (AS INDICATED WITH HATCH) TYP.
- MT-2
HALO-LIT SIGNAGE TO ALIGN WITH THE CENTER OF DOORWAY
MATTE BLACK
- P-E1
PAINT (E) STUCCO, TYP.
- PROPOSED EXTERIOR REPLACEMENT SCENCE
- REPLACE EXISTING SIGN PLAQUE IN KIND WITH NEW WITH NEW LOGO

1 PROPOSED NORTH SIDE ELEVATION
SCALE: 3/16" = 1'-0"





EXISTING EAST ELEVATION LIGHTING



EXISTING NORTH ELEVATION LIGHTING

EXISTING EXTERIOR LIGHTING

(5) GOOSENECK LIGHT FIXTURES
(4) SCONCE FIXTURES

(9) TOTAL EXISTING FIXTURES

PROPOSED EXTERIOR LIGHTING

(4) SCONCE FIXTURES
(2) HALO LIT SIGNS

(6) TOTAL PROPOSED FIXTURES

NOTES ABOUT LIGHTING LEVELS

The proposed conditions will be a net reduction in the ambient lighting levels on the street due to the removal of the 5 large gooseneck lights which light the face of the building as well as light the sidewalk.

Also the proposed replacement sconces (see cut sheet attached) are indirect lights as opposed to the existing direct lights, this should also reduce the amount of ambient light on the street.



PROPOSED EAST ELEVATION LIGHTING



PROPOSED NORTH ELEVATION LIGHTING

LIGHTING SUMMARY

Ammonite (274)
Farrow & Ball

Strong White (2001)
Farrow & Ball

AMMONITE (P-E2) BASE / CORNICE / TRIM

STRONG WHITE (P-E1) BRICK & STUCCO

ADA SCONCE 25

Solid sheet metal construction with modern LED technology makes this sconce both classic and contemporary. We mount adjustable reflectors on friction hinges to allow you to direct the wall-washing light of these sconces in an endless variety of angles. The Ada Sconce gets its name and its raison d'être from the Americans with Disabilities Act (ADA), which dictates that sconces in hallways must not protrude from the wall more than 4". The Ada Sconce was also greatly inspired by Charlotte Perriand's CP-1, in our opinion one of the best sconces ever made.

BRENDAN RAVENHILL STUDIO
contact@brendanravenhill.com

- DIMENSIONS

5.75" x 3.5" x 25"
- COLOR TEMPERATURE

2700K
90+ CRI
3500K Upon Request
- BULB SPECS

Warm-White LED 27W
- CERTIFICATION

UL
Wet Rated
ADA Compliant
CE Listed for Indoor Use Upon Request
- VOLTAGE

120v
220v Upon Request
- COLORWAYS

White
Black
Black & Brass
- LUMENS

2100 Standard



PROPOSED SCONCE

EXTERIOR SCONCE

