

Tai Chi Cafe - Area Plan and Site Plan

1357 Wisconsin Ave, NW 20007
September 21, 2022

sanchez palmer **architects**

215 N Payne Street, Suite 301
Alexandria, VA 22314
Ph: 703.549.4033

Optional tenant signage
mounted to fascia
above louver

Surface-mounted louver
in perimeter frame for
fresh air intake. Louver
size: 24" h x 16'-0" w

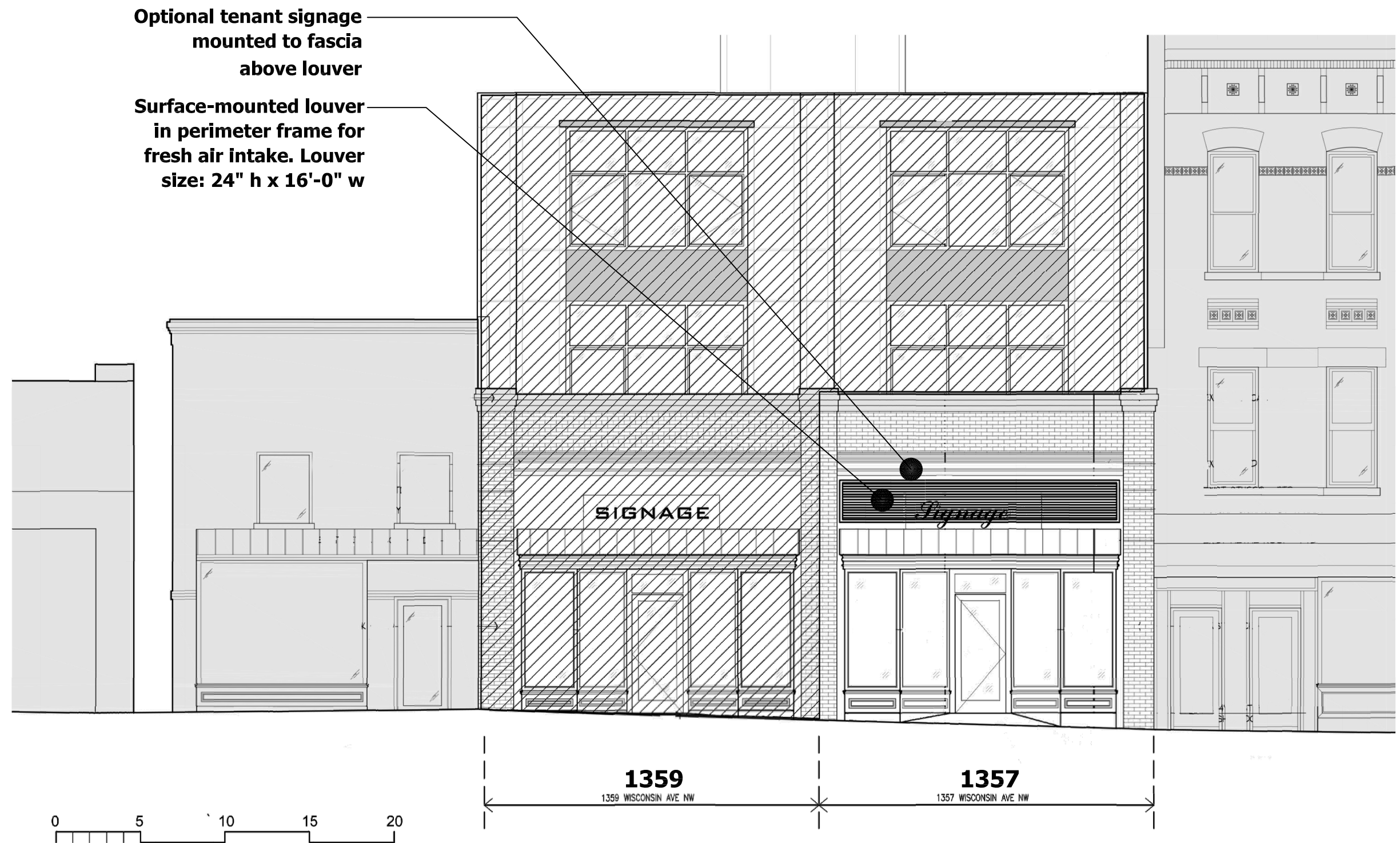


Tai Chi Cafe - Exterior Louver for Fresh Air Intake - Option 1

sanchez palmer **architects**

1357 Wisconsin Ave, NW 20007
September 21, 2022

215 N Payne Street, Suite 301
Alexandria, VA 22314
Ph: 703.549.4033



Tai Chi Cafe - Exterior Louver for Fresh Air Intake - Option 1

1357 Wisconsin Ave, NW 20007
September 21, 2022

sanchez palmer **architects**

215 N Payne Street, Suite 301
Alexandria, VA 22314
Ph: 703.549.4033



Optional tenant signage
mounted to fascia
above louver or on
blank section between
louvers

Surface-mounted louvers
in perimeter frame for
fresh air intake. Louver
sizes: 24" h x 24" w

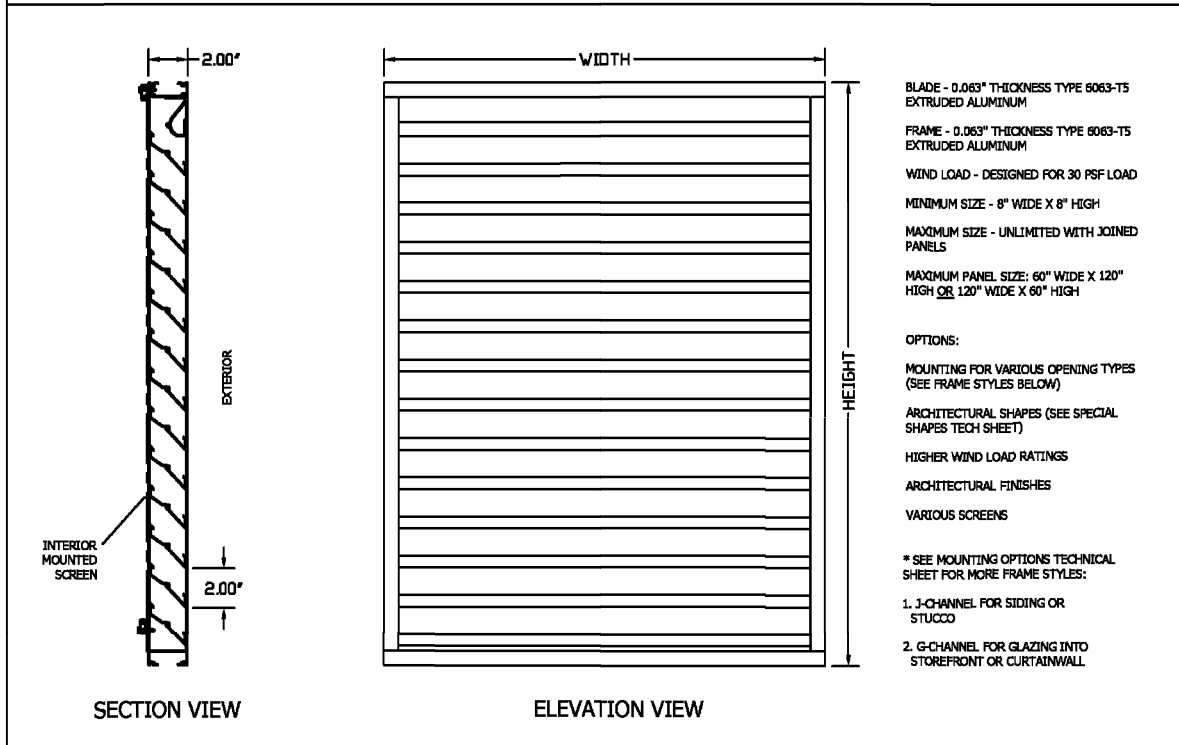
Tai Chi Cafe - Exterior Louver for Fresh Air Intake - Option 2

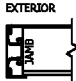
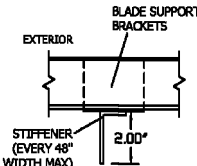
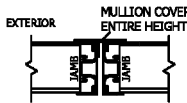
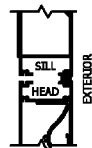
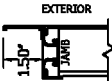
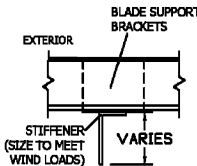
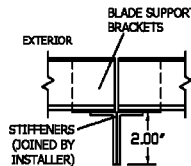
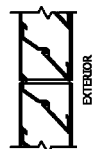

sanchez palmer **architects**

1357 Wisconsin Ave, NW 20007
September 21, 2022

215 N Payne Street, Suite 301
Alexandria, VA 22314
Ph: 703.549.4033

<p align="center">E2DS - 2" DEEP 45 DEGREE DRAINABLE D BLADE EXTRUDED ALUMINUM STATIONARY LOUVER</p>

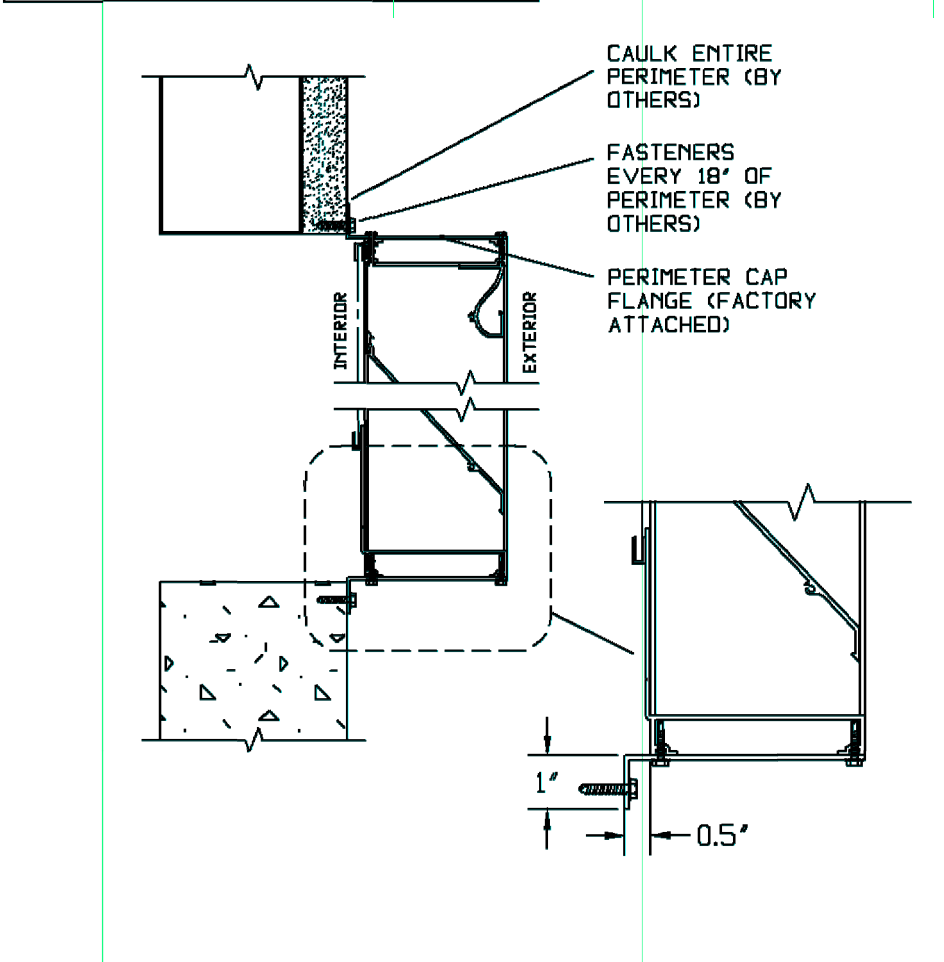


CONSTRUCTION	FRAME STYLE *	STIFFENER	VERTICAL MULLION (MULTIPLE PANELS WIDE)	HORIZONTAL MULLION (MULTIPLE PANELS HIGH)
STANDARD	 <p>CHANNEL "C" FRAME</p>	 <p>BLADE STIFFENER</p>	 <p>EXPOSED</p>	 <p>EXPOSED</p>
OPTIONAL	 <p>FLANGE "F" FRAME</p>	 <p>BLADE STIFFENER</p>	 <p>HIDDEN</p>	 <p>HIDDEN</p>
 <p>266 W Mitchell Ave - Cincinnati, OH 45232 PH: (888) 568-8371 Fax: (888) 568-8370</p>		PROJECT		
		CONTRACTOR		
		ARCHITECT		
		DRAWN BY: JRR	DRAWING TYPE: TECHNICAL SHEET	DRAWING TITLE: EDZS

● COPYRIGHT 2020
Harray, LLC dba Architectural Louvers

	CAP "Z" FRAME	
--	---------------	--

FOR SURFACE MOUNT
INSTALLATIONS



**Manufacturer's Standard Detail
for Surface-Mounted Installation**

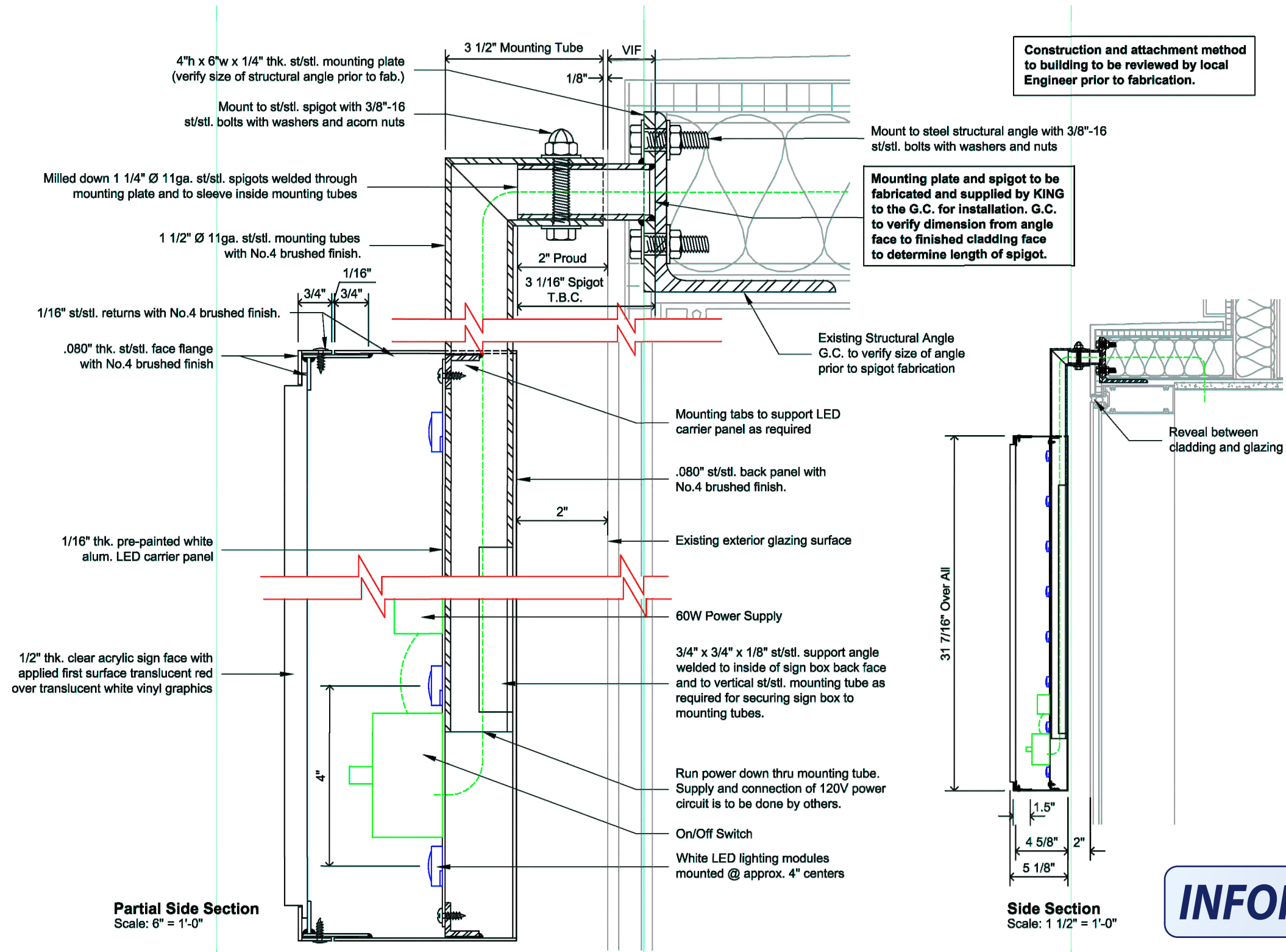
NTS

Tai Chi Cafe - Exterior Louver for Fresh Air Intake - Louver Details

1357 Wisconsin Ave, NW 20007
September 21, 2022

sanchez palmer **architects**

215 N Payne Street, Suite 301
Alexandria, VA 22314
Ph: 703.549.4033



Tai Chi Cafe - Exterior Louver for Fresh Air Intake - Example Sign Mounting Detail Over Option 1 Louver

sanchez palmer **architects**



**View from third floor window
onto low roof with alley beyond**



**View from alley to one story building
and apartment entrance. Stair enclosure
to from grade to upper residential
level at left with second & third story
residential beyond.**



Tai Chi Cafe - Exterior Louver for Fresh Air Intake - Exterior Photos at Rear/Alley Side of Building

sanchez palmer architects

215 N Payne St, suite 301
Alexandria, Virginia 22314
703.549.4033
sanchezpalmerarchitects.com

September 22, 2022
Tai Chi Café – 1357 Wisconsin Ave NW

Jessica Stevenson Amos
Historic Preservation Specialist
U.S. Commission of Fine Arts
401 F Street, NW, Suite 312
Washington, DC, 20001

Dear Mrs. Amos:

On behalf of our client, Yong Sen Chen and TaiChi DC LLC, we are seeking approval of a new louver or louvers to be installed in the exterior façade of building 1357 Wisconsin Ave, NW as part of the new mechanical system associated with the construction of a new café, Tai Chi Bubble Tea. The louver(s) are to provide make-up air for the exhaust hood system serving the kitchen and cooking operations in the café. The balance of the work scope related to the renovations for the new café were previously approved under permit number B2208712. The enclosed exhibits show two proposed options for the location and size of the louver(s).

The proposed location of the are intake louvers on the street-facing façade are for the following reasons:

- The kitchen hood exhaust fan is located at the rear of the building, on a low roof and away from roof edge to mitigate the visual impact of new roof-top equipment.
- The location for make-up intake must be located remotely from the exhaust to avoid reintroducing contaminated air into the café.
- The area under the rear-side low roof is outside of the café tenant area and currently occupied by building services/systems and an occupied residential unit. An access route to the roof for exhaust ductwork is possible only in the common corridor. This route is not large enough to accommodate both exhaust and make-up air ducts and does not provide access to two remote areas of the low roof that would allow compliance with the requirement to separate exhaust and intake locations.
- The street-facing façade is part of the area controlled by our client and the café operations and includes an area of wall over top of the existing bay window awnings that is large enough to accommodate the required intake louvers. This area is also below the horizontal frieze and coping of the original façade which were preserved in a recent renovation of the base building.
- This field of exterior wall corresponds to other nearby architectural precedents with ground floor commercial uses, which have a clerestory above an entry canopy or bay window. This clearstory is

often the location for both signage and similar louvers or mechanical installations required by the interior use.

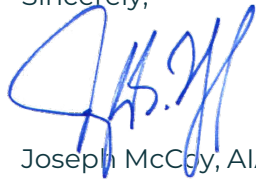
- The proposed louver(s) will serve as a location for make-up air only and will not discharge contaminated or grease-laden air.

We offer two options in the enclosed exhibits for the installation of the requested louver(s).

- Option 1 would provide an oversized louver that fills the available wall field to become an architectural element on its own. The portion of the louver not needed for intake air will be blocked off and retain the existing wall behind. Although a sign request in no part of this application, we provide an option for attachment of a potential sign to demonstrate how one could be attached if the current or a future client wishes to install signage over the louver.
- Option 2 would split the required louver size of 48"x48" into two equal sized louvers located at either end of the blank wall field. This option would retain existing wall for directly mounting of a future sign.

We appreciate your consideration of these options and would be glad to discuss with you ahead of the public hearing any concerns you may have about our proposal, as well as any suggestion you may have to alterations to our options that would be appropriate for the use and architectural consideration of the building.

Sincerely,

A handwritten signature in blue ink, appearing to read 'J. McCoy', is written over the printed name.

Joseph McCoy, AIA, LEED AP