

Oaks Museum

Montrose Park

Georgetown
Neighborhood Library

Lover's Lane

The Oak Hill Cemetery

1678 32nd St NW,
Washington, DC 20007

Reservoir Rd NW

The Chakra Room
chakra store in
Georgetown - chromo...

Dent Pl NW

i Bowl @ Georgetown

Volta Park
Recreation
Center

Q St NW

Volta Pl NW

Thomas Sweet

Tudor Place
Temporarily closed

32nd St NW

City Sliders

P St NW

Avon Ln NW

Avon Pl NW

Dent Pl NW

Cambridge Pl NW

TJ Aly

Q St NW

31st St NW

Morgan's Pharmacy

Stachow

Christ Church,

R St NW

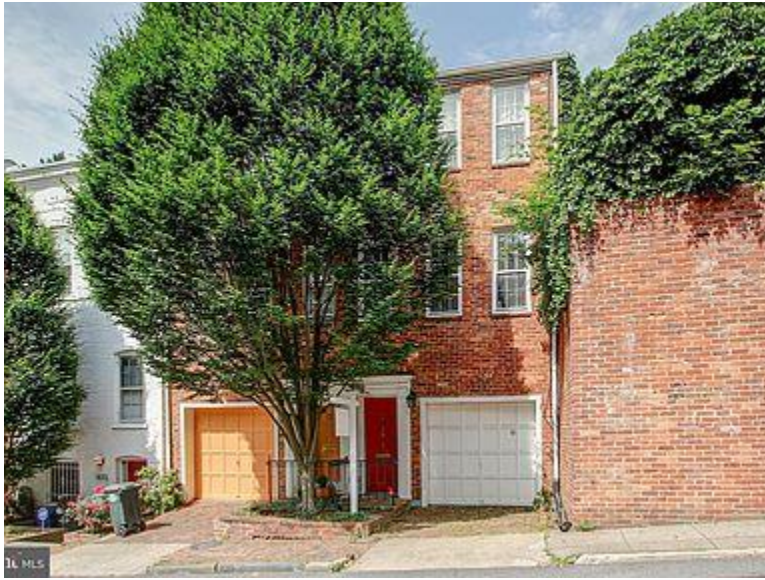
30th St NW

29th St NW

29th St NW

30th St

Front View of T. Kapan Residence 1678 32nd St. NW



8020 NORFOLK AVE.
 BETHESDA, MD 20814
 MIKE DAFONSECA 330-283-4154
 mike@windowsolutionsbysunbrite.com
 www.windowsolutionsbysunbrite.com



BILL TO:
 TUMER KAPAN
 1678 32ND ST. NW

SHIP TO:
 TUMER KAPAN
 1678 32ND ST. NW

WASHINGTON DC 20007

WASHINGTON DC 20007

Phone

Phone

Email

Fax

Contact Info

Contact Info

QUOTE #	PO #	QUOTE NAME	PROJECT	JOB NAME	CUSTOMER PO #
1629790		TUMER KAPAN RESIDENCE	TUMAR KAPAFINAL MEASUREMENT		

LINE #	LINE TYPE	DESCRIPTION	QTY	U/M
--------	-----------	-------------	-----	-----

100-1	WindowAndDoor	PK- 350	1	
-------	---------------	---------	---	--

APRIL 28th, 2022 PRICEBOOK

Wood Windows Double Hung Operating 29.5 x 65

Custom: Frame Width = 29.5, Frame Height = 65, Sash Split = 50/50,

Screen Width = 26.09375, Screen Height = 32.1875

Complete Unit, CoreGuard Plus

Pine Exterior, Exterior Primed = White, Ultra Coat White, Pine Interior

Sash-Panel Exterior Primed Finish = White, Ultra Coat White

Low-E, Traditional Bead, Tempered Both Lites, Type 36, Argon Gas,

Cardinal XL Edge Spacer

Half Screen Shipped Separately, Standard Screen, White 001, AAMA 2604,

Ultra Vue Mesh

Applied Hdwe, Hdwe = White, Concealed Jambliner, 1-Lock

SDL, Equal, Traditional, 7/8", Exterior = Primed Exterior, Exterior Grille

Primed Color = White, Interior Ultra Coat = White, Pine Interior, w/

Shadow Bar, Shadow Bar Color = Silver Anodized, 3W2H, Grille Type

Custom

Brickmould, 2", Exterior Sill Nose-Subsill Size = Historic 2", Primed

Exterior, Exterior Casing Primed Finish = White, Casing Applied

Jamb = 4-9/16"

IPG = PG40, Ind. CCL = 436-H-658.23, Ind. FL = FL24481, Ind. TDI =

U-Factor = 0.29, SHGC = 0.26, CR = 58, VT = 0.44, AI = <0.30/<1.5, CPD

= SIE-N-112-00984-00004, Energy Star Region = NC, GapFill1 = ARG,

Can ER = 17, W m 2k = 1.65

Exterior Casing Width = 32.125, Exterior Casing Height = 66.5

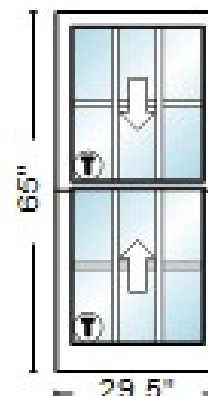
Unit 1: Glass Width = 24.03125, Glass Height = 28.1875, Lower Glass Sash

Width = 26.40625, Lower Glass Sash Height = 32.10938, Upper Glass Sash

Width = 26.40625, Upper Glass Sash Height = 30.79688

Rough Opening: 30.25" X 65.5"

Overall Unit Size: 29.5" X 65"



Room Location: FRONT MAIN FLOOR
 LH BATHROOM
 WINDOW #1

QUOTE #	PO #	QUOTE NAME	PROJECT	JOB NAME	CUSTOMER PO #
1629790		TUMER KAPAN RESIDENCE	TUMAR KAPAFINAL MEASUREMENT		

LINE #	LINE TYPE	DESCRIPTION	QTY	U/M
200-1	WindowAndDoor	PK- 350	2	

APRIL 28th, 2022 PRICEBOOK

Wood Windows Double Hung Operating 29.5 x 65

Custom: Frame Width = 29.5, Frame Height = 65, Sash Split = 50/50,

Screen Width = 26.09375, Screen Height = 32.1875

Complete Unit, CoreGuard Plus

Pine Exterior, Exterior Primed = White, Ultra Coat White, Pine Interior

Sash-Panel Exterior Primed Finish = White, Ultra Coat White

Low-E, Traditional Bead, Type 36, Argon Gas, Cardinal XL Edge Spacer

Half Screen Shipped Separately, Standard Screen, White 001, AAMA 2604,

Ultra Vue Mesh

Applied Hdwe, Hdwe = White, Concealed Jambliner, 1-Lock

SDL, Equal, Traditional, 7/8", Exterior = Primed Exterior, Exterior Grille

Primed Color = White, Interior Ultra Coat = White, Pine Interior, w/

Shadow Bar, Shadow Bar Color = Silver Anodized, 3W2H, Grille Type

Custom

Brickmould, 2", Exterior Sill Nose-Subsill Size = Historic 2", Primed

Exterior, Exterior Casing Primed Finish = White, Casing Applied

Jamb = 4-9/16"

IPG = PG40, Ind. CCL = 436-H-658.23, Ind. FL = FL24481, Ind. TDI =

U-Factor = 0.29, SHGC = 0.26, CR = 58, VT = 0.44, AI = <0.30/<1.5, CPD

= SIE-N-112-00984-00004, Energy Star Region = NC, GapFill1 = ARG,

Can ER = 17, W m 2k = 1.65

Exterior Casing Width = 32.125, Exterior Casing Height = 66.5

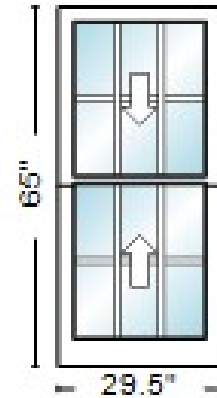
Unit 1: Glass Width = 24.03125, Glass Height = 28.1875, Lower Glass Sash

Width = 26.40625, Lower Glass Sash Height = 32.10938, Upper Glass Sash

Width = 26.40625, Upper Glass Sash Height = 30.79688

Rough Opening: 30.25" X 65.5"

Overall Unit Size: 29.5" X 65"



Room Location: FRONT MAIN FLOOR
CENTER & RH
WINDOW #2 & #3

QUOTE #	PO #	QUOTE NAME	PROJECT	JOB NAME	CUSTOMER PO #
1629790		TUMER KAPAN RESIDENCE	TUMAR KAPAFINAL MEASUREMENT		

LINE #	LINE TYPE	DESCRIPTION	QTY	U/M
300-1	WindowAndDoor	PK- 350	3	

APRIL 28th, 2022 PRICEBOOK

Wood Windows Double Hung Operating 29.5 x 65

Custom: Frame Width = 29.5, Frame Height = 65, Sash Split = 50/50,

Screen Width = 26.09375, Screen Height = 32.1875

Complete Unit, CoreGuard Plus

Pine Exterior, Exterior Primed = White, Ultra Coat White, Pine Interior

Sash-Panel Exterior Primed Finish = White, Ultra Coat White

Low-E, Traditional Bead, Type 36, Argon Gas, Cardinal XL Edge Spacer

Half Screen Shipped Separately, Standard Screen, White 001, AAMA 2604,

Ultra Vue Mesh

Applied Hdwe, Hdwe = White, Concealed Jambliner, 1-Lock

SDL, Equal, Traditional, 7/8", Exterior = Primed Exterior, Exterior Grille

Primed Color = White, Interior Ultra Coat = White, Pine Interior, w/

Shadow Bar, Shadow Bar Color = Silver Anodized, 3W2H, Grille Type

Custom

Brickmould, 2", Exterior Sill Nose-Subsill Size = Historic 2", Primed

Exterior, Exterior Casing Primed Finish = White, Casing Applied

Jamb = 4-9/16"

IPG = PG40, Ind. CCL = 436-H-658.23, Ind. FL = FL24481, Ind. TDI =

U-Factor = 0.29, SHGC = 0.26, CR = 58, VT = 0.44, AI = <0.30/<1.5, CPD

= SIE-N-112-00984-00004, Energy Star Region = NC, GapFill1 = ARG,

Can ER = 17, W m 2k = 1.65

Exterior Casing Width = 32.125, Exterior Casing Height = 66.5

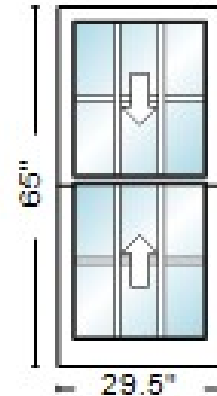
Unit 1: Glass Width = 24.03125, Glass Height = 28.1875, Lower Glass Sash

Width = 26.40625, Lower Glass Sash Height = 32.10938, Upper Glass Sash

Width = 26.40625, Upper Glass Sash Height = 30.79688

Rough Opening: 30.25" X 65.5"

Overall Unit Size: 29.5" X 65"



Room Location: FRONT TOP FLOOR
WINDOW #4 / #5 / #6

QUOTE #	PO #	QUOTE NAME	PROJECT	JOB NAME	CUSTOMER PO #
1629790		TUMER KAPAN RESIDENCE	TUMAR KAPAFINAL MEASUREMENT		

LINE #	LINE TYPE	DESCRIPTION	QTY	U/M
400-1	WindowAndDoor	PK- 350	1	

APRIL 28th, 2022 PRICEBOOK

Wood Windows Double Hung Operating / Operating 75 x 49

Custom: Frame Width = 37.5, Frame Height = 49, Sash Split = 50/50,

Screen Width = 34.09375, Screen Height = 24.1875

Complete Unit, CoreGuard Plus

Pine Exterior, Exterior Primed = White, Ultra Coat White, Pine Interior

Sash-Panel Exterior Primed Finish = White, Ultra Coat White

Low-E, Traditional Bead, Type 36, Argon Gas, Cardinal XL Edge Spacer

Half Screen Shipped Separately, Standard Screen, White 001, AAMA 2604,

Ultra Vue Mesh

Applied Hdwe, Hdwe = White, Concealed Jambliner, 2-Locks

Vertical Factory Tight Mull

Contour Grille In Air, Equal, 11/16", White, 3W2H, Grille Type Custom

Brickmould, 2", Exterior Sill Nose-Subsill Size = Historic 2", Primed

Exterior, Exterior Casing Primed Finish = White, Casing Applied

Jamb = 4-9/16", Interior Mull Casing Applied

IPG = PG35, Ind. CCL = 436-H-658.19, Ind. FL = FL24481, Ind. TDI =

U-Factor = 0.31, SHGC = 0.26, CR = 58, VT = 0.44, AI = <0.30/<1.5, CPD

= SIE-N-112-00983-00004, GapFill1 = ARG, Can ER = 14, W m 2k = 1.76

Exterior Casing Width = 77.625, Exterior Casing Height = 50.5

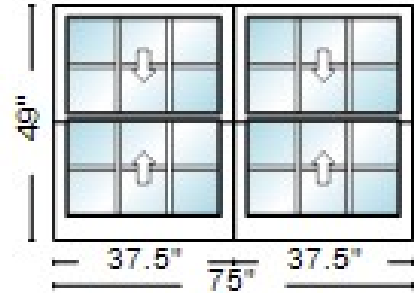
Unit 1,2: Glass Width = 32.03125, Glass Height = 20.1875, Lower Glass

Sash Width = 34.40625, Lower Glass Sash Height = 24.10938, Upper Glass

Sash Width = 34.40625, Upper Glass Sash Height = 22.79688

Rough Opening: 75.75" X 49.5"

Overall Unit Size: 75" X 49"



Room Location: REAR WINDOW TOP
FLOOR TWIN DH
WINDOW #7

QUOTE #	PO #	QUOTE NAME	PROJECT	JOB NAME	CUSTOMER PO #
1629790		TUMER KAPAN RESIDENCE	TUMAR KAPAFINAL MEASUREMENT		

LINE #	LINE TYPE	DESCRIPTION	QTY	U/M
500-1	WindowAndDoor	PK- 350	1	

APRIL 28th, 2022 PRICEBOOK

Aluminum Clad Wood French Sliding Patio Door Stile And Rail Door
Active / Inactive 96.3125 x 80.3125

Custom: Door Panel Width = 48.75, Door Panel Height = 77.5, Frame
Width = 48.15625, Frame Height = 80.3125

Complete Unit, CoreGuard Plus

Frame = White 001, Clad Finish = AAMA 2604, Ultra Coat White, Pine
Interior

Sash = White 001, Sash-Panel Clad Finish = AAMA 2604, Ultra Coat
White, 4 1/2" Stile, 7 1/2" Bottom Rail, 4 1/2" Top Rail

Low-E, Traditional Bead, Tempered Both Lites, Type 46, Argon Gas,
Cardinal XL Edge Spacer

Unit 1: Sliding Screen Shipped Separately, White 001, AAMA 2604,
Outside Screen Width = 47.625, Outside Screen Height = 78.625, Ultra Vue
Mesh

Unit 2: AAMA 2604

Unit 1: 2 pt Lock, Contemporary, Keyed Alike, Hdwe = White, No Footbolt

Unit 2: 2 pt Lock

Vertical Factory 0" thick

Contour Grille In Air, Equal, 11/16", White, 3W4H, Grille Type Custom
Brickmould, 2", White 001, AAMA 2604, Casing Applied

Jamb = 5"

No Nail Fin

U-Factor = 0.32, SHGC = 0.24, CR = 57, VT = 0.39, AI = <0.30/<1.5, CPD
= SIE-N-104-03033-00001, GapFill1 = ARG, Can ER = 13, W m 2k = 1.82

Review/No Rating, CCL = Unanswered

Rough Opening Width = 96.8125, Rough Opening Height = 80.8125

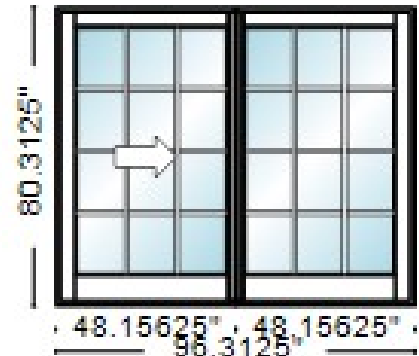
Set Up = Yes, Operator Panel Installed = No

Exterior Casing Width = 98.9375, Exterior Casing Height = 81.625

Unit 1,2: Glass Width = 40.876, Glass Height = 66.75,

Rough Opening: 96.8125" X 80.8125"

Overall Unit Size: 96.3125" X 80.3125"



Room Location: REAR PATIO DOOR
WINDOW #8

QUOTE #	PO #	QUOTE NAME	PROJECT	JOB NAME	CUSTOMER PO #
1629790		TUMER KAPAN RESIDENCE	TUMAR KAPAFINAL MEASUREMENT		

BID BY	SALESPERSON
	280

Comments:

COMPANY

Unless otherwise noted on the line item, this product is covered under a Sierra Pacific Windows limited warranty. Please see your dealer, the Website WWW.SIERRAPACIFICWINDOWS.COM or our marketing literature for a copy of the applicable limited warranty for specific language, limitations and exclusions.

All prices quoted are typically valid for 30 days. The quoted pricing is not final and is subject to revised price book releases and changes until the order has been submitted. Other exceptions may apply. Shop drawing charges are not included.

COLOR VARIATION

This quote may contain units with anodized finishes. Color variation is an inherent characteristic of anodized finishes and end results will vary. Sierra Pacific offers a variety of wood species produced in combinations of solid and veneer-wrapped wood parts that have varying grain patterns. Wood characteristics also vary due to the species of the wood. The combination of these items could result in color variations of the finished stained products. Outswing Doors will have a complementary species of wood threshold.

RATINGS

Oversized units and certain mulled/stacked configurations have not been tested and therefore have no performance grade(PG) rating. P.E. approved job-specific comparative analysis may be available for these non-rated units. Please contact your Inside Sales group to determine available options for non-rated product. A complete list of rated products is available at WWW.SIERRAPACIFICWINDOWS.COM

Units denoted with an 'E' on the line item image meet egress based off criteria from the International Residential Code manual. Each has at least 20" clear opening width, 24" clear opening height and a total clear opening square footage of at least 5.7. The window sill height is not taken into consideration and needs to be reviewed for compliance in your local jurisdiction.

The Vinyl replacement products do not have a PG rating.

ALUMINUM CLAD UNITS ONLY: **SPW recommends through frame installation for units with factory applied brickmould.**

If units are being installed in an area requiring specific PG ratings the unit must be installed in the exact manner tested as shown in our certified installation details. These details can be found on the Florida Building Code website at www.floridabuilding.org or can be obtained by contacting Sierra Pacific's Architectural Services Department at 800-433-4873 ext. 1734.

Recent building code changes require the addition of limiting devices on any operating unit installed where the finished clear opening of the unit is within 24" of the floor and is more than 72" above the finished grade or other surface below the window. Please check with your local building department to determine if this code is a requirement in your jurisdiction and order units accordingly.

THERMAL PERFORMANCE

This quote may contain glazing options that include coating 'i89'. These glazing options may have an increased risk of room side glass condensation in areas where the winter outdoor temperatures are below freezing (32°F/0°C).

We Appreciate Your Business!













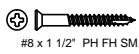




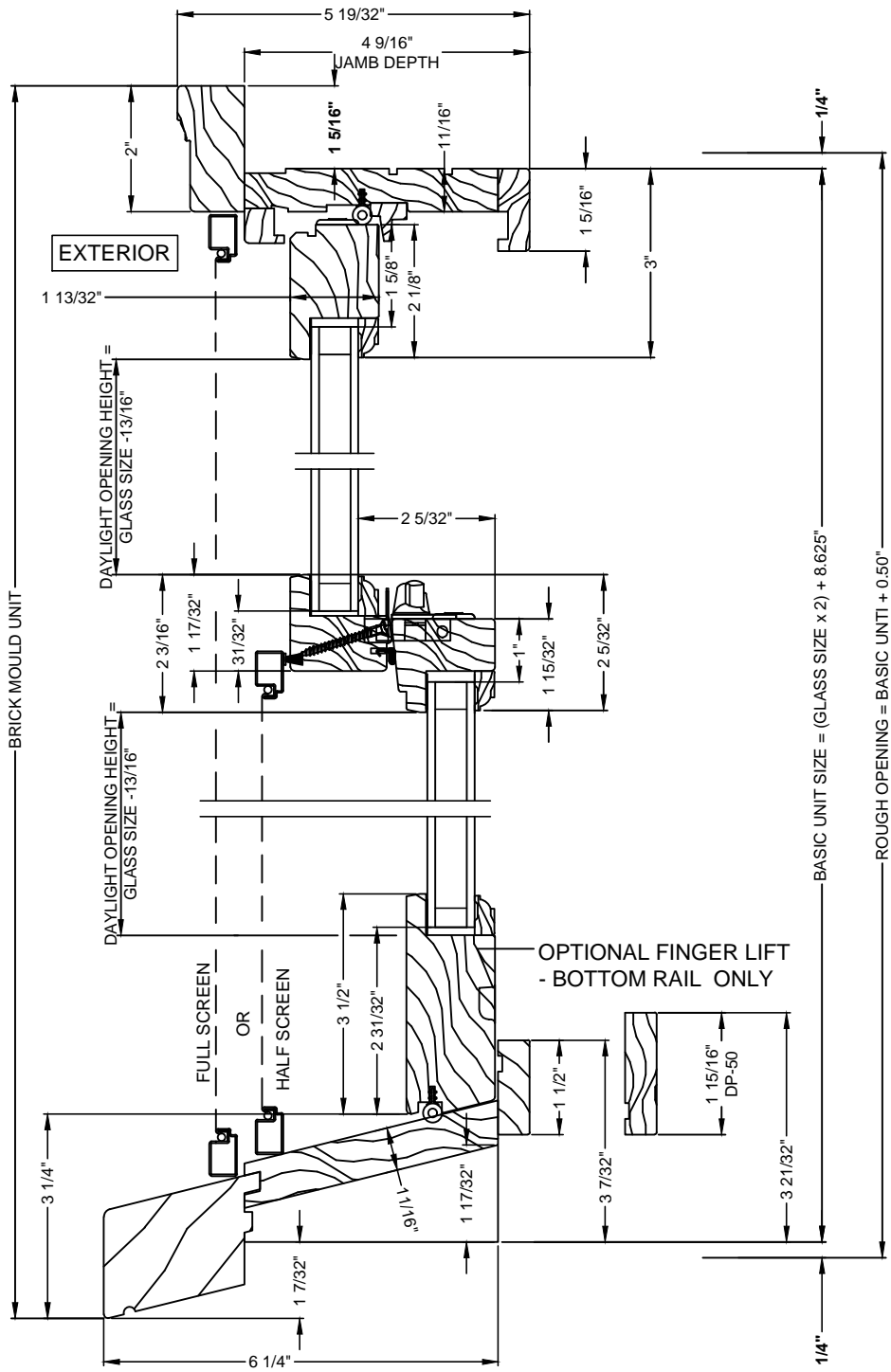
BROADVIEW
SECURITY
800 229 9200

All Wood Double Hung - W/Historic Sill Nose

Scale: 4" = 1'



*JAMB EXTENSION MAY BE APPLIED WITH STAINLESS STEEL 18 (1/4) x 1-1/4" STAPLE.
BRAD NAILS, 1" or 1 1/4" T-NAILS OR SCREWS (PRE-DRILL AND COUNTERSINKING REQUIRED WHEN USING SCREWS).





SIERRA
PACIFIC
WINDOWS

All-Wood

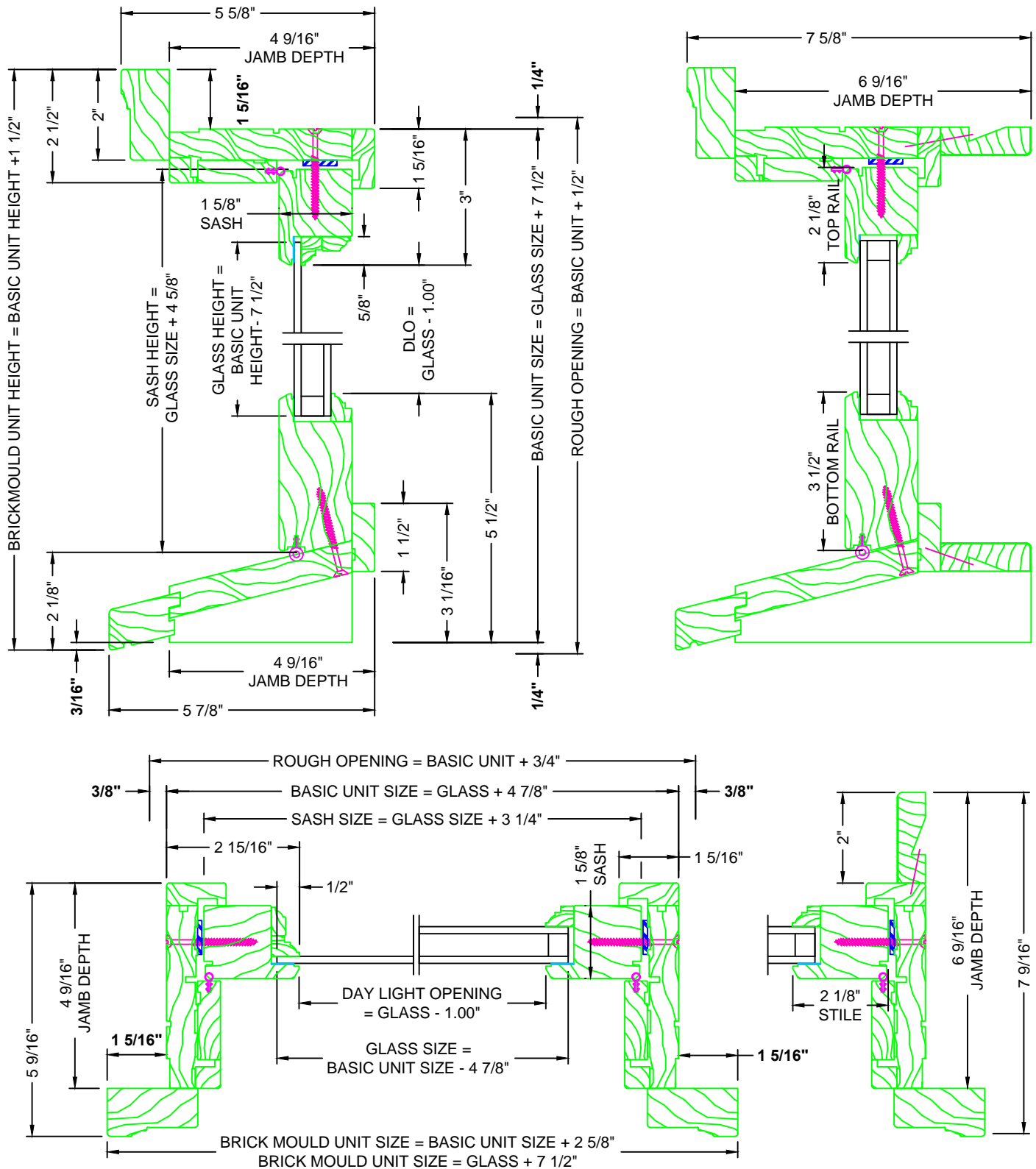
Tilt Double Hung Picture & Custom Picture Windows

Head, Sill & Jamb Details

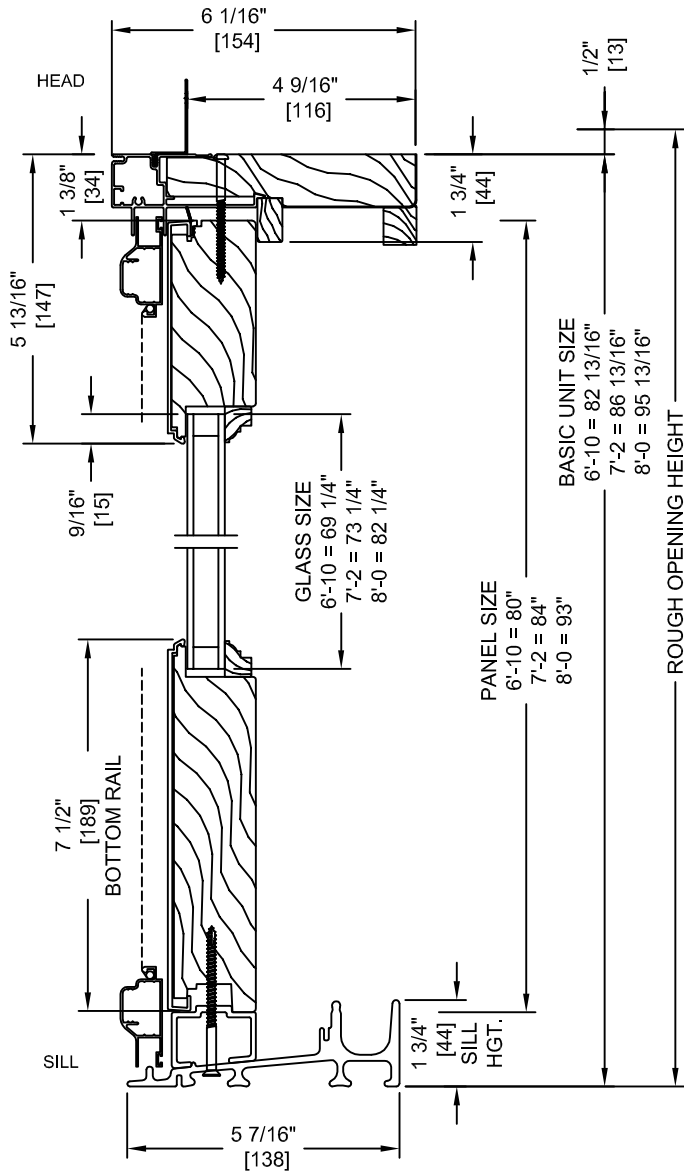
Page 1 of 1

Drawn to Full Scale

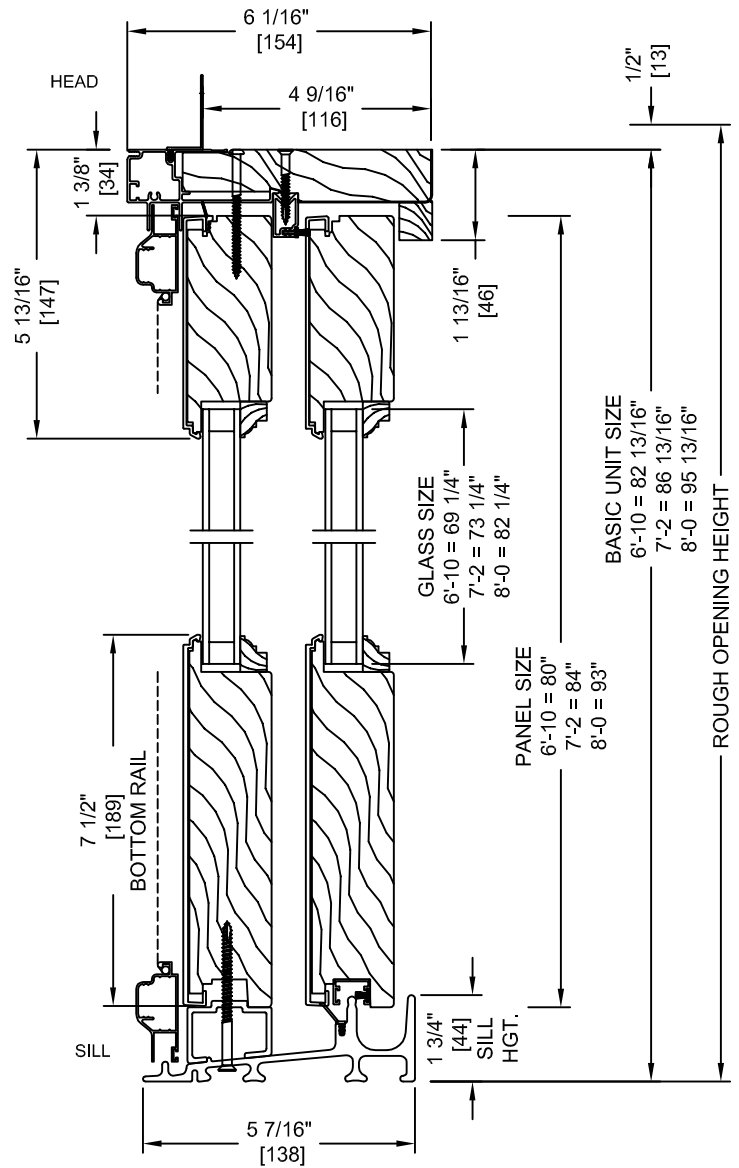
Printed Scale 4" = 1'



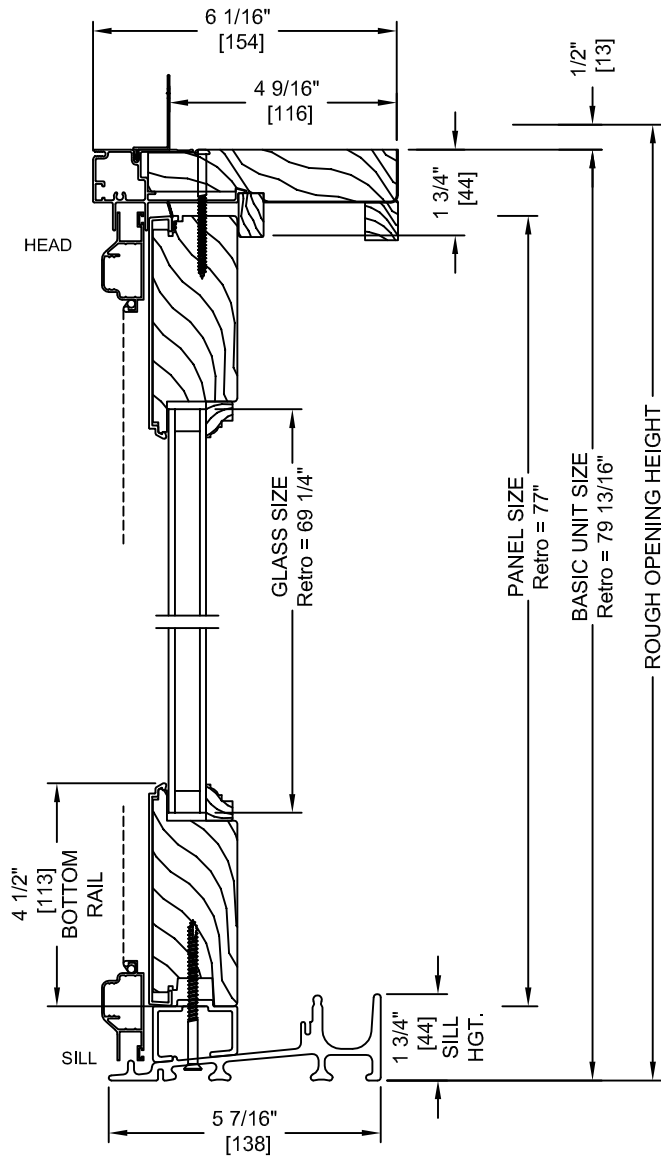
French Vertical Stationary Section View



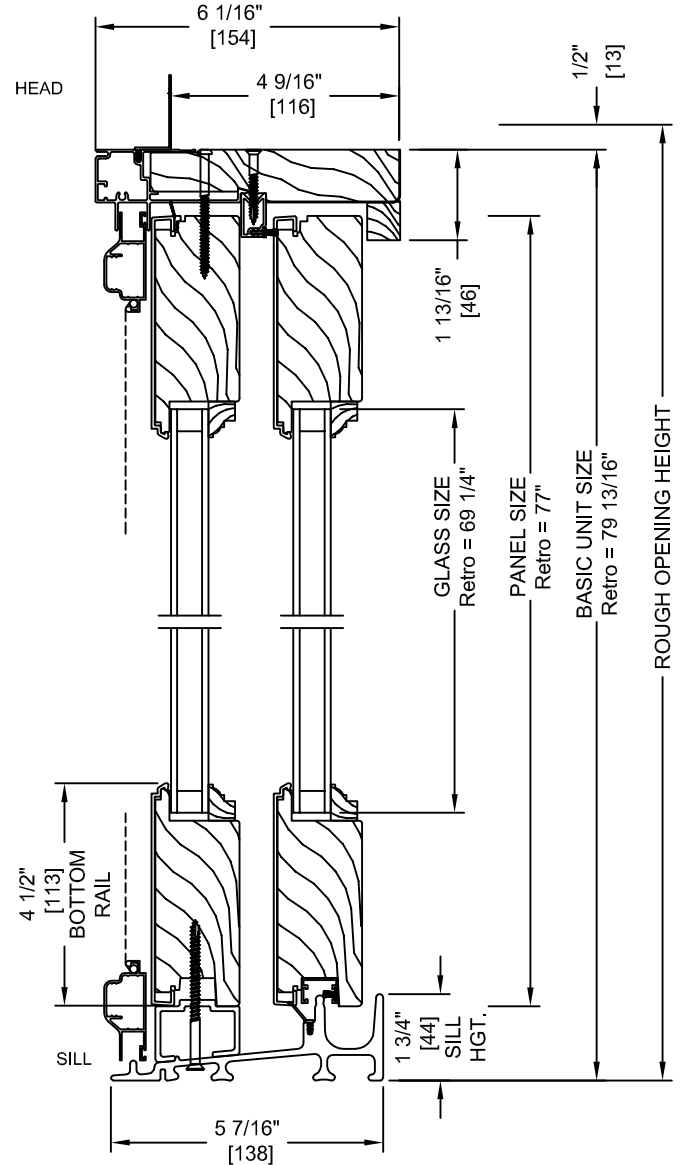
French Vertical Operating Section View



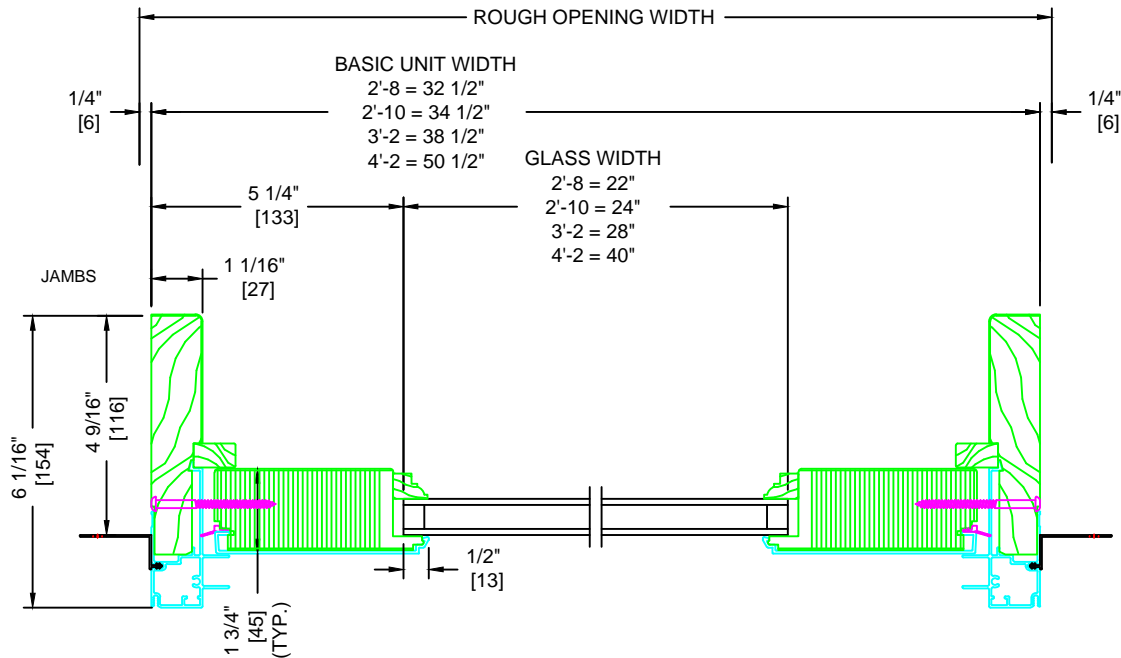
French RETRO 6-8, Stationary



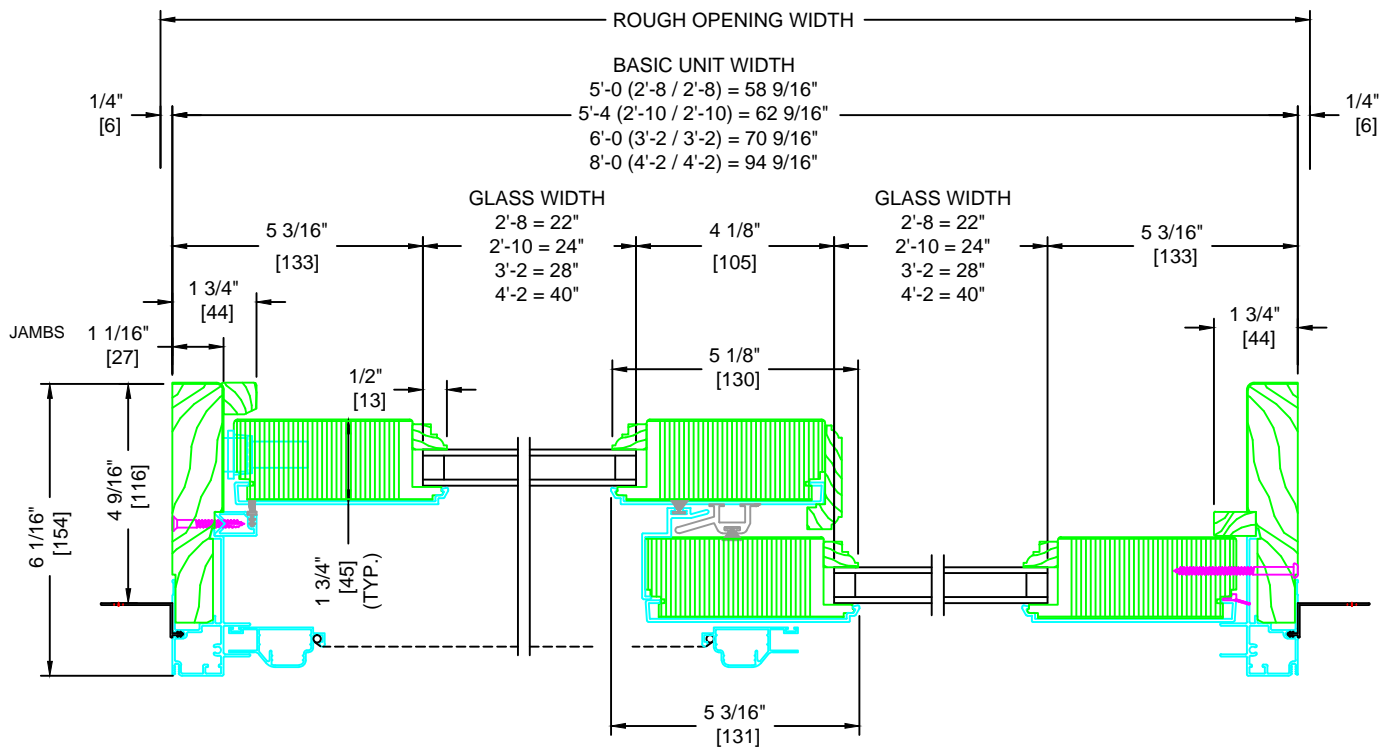
French RETRO 6-8 Operating



French Horizontal Fixed Section View



French Horizontal 2-Wide Section View Active / Inactive

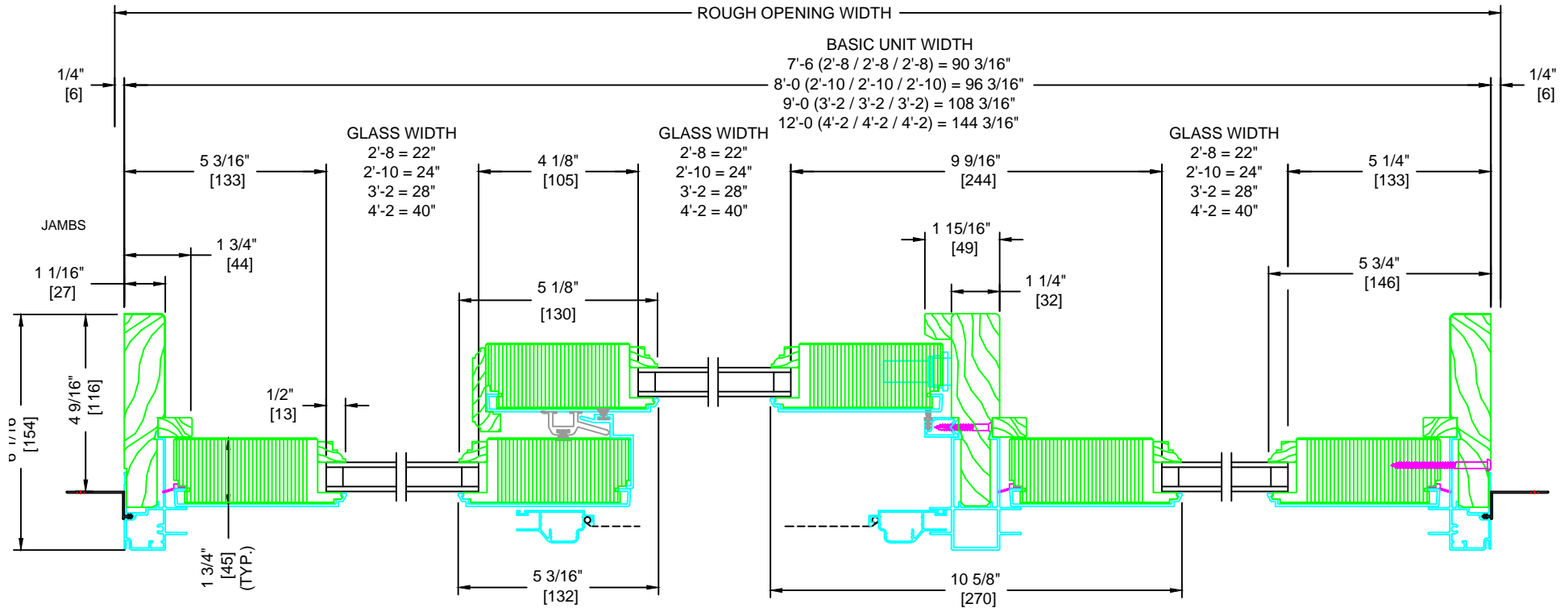




Aluminum Wood French Sliding Patio Doors

Jamb Details
Page 2 of 4
Drawn to Full Scale
Printed to 3" = 1' Scale

French Horizontal 3-Wide OXO Section View, Inactive / Active / Fixed

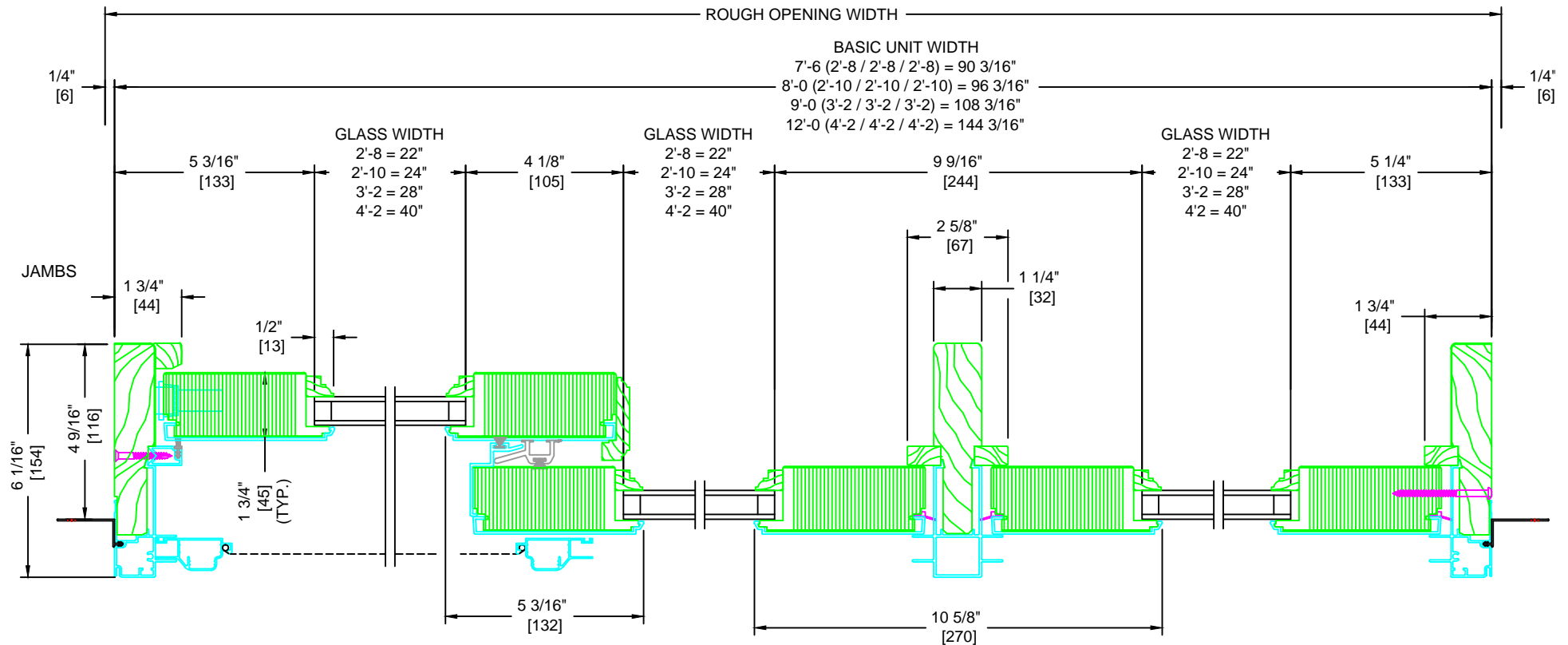




Aluminum Wood French Sliding Patio Doors

Jamb Details
Page 3 of 4
Drawn to Full Scale
Printed to 3" = 1' Scale

French Horizontal 3-Wide XXO Section View, Active / Inactive / Fixed

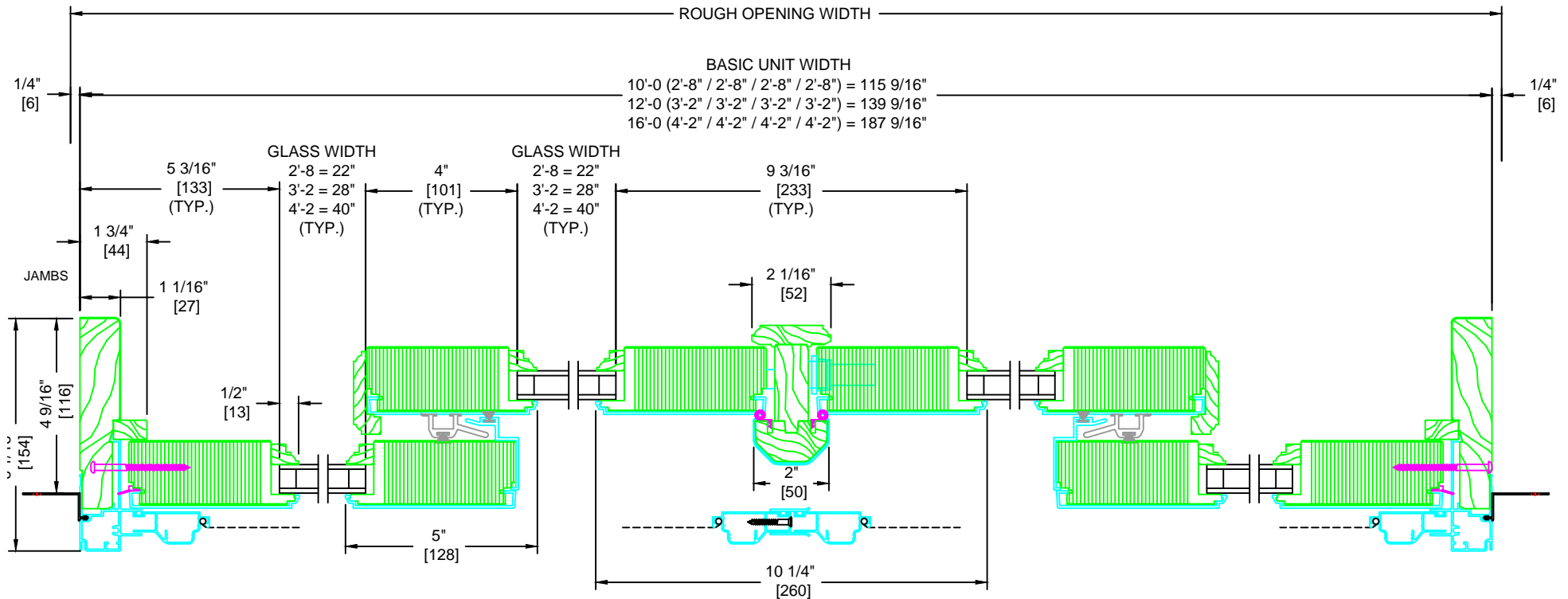




Aluminum Wood French Sliding Patio Doors

Jamb Details
Page 4 of 4
Drawn to Full Scale
Printed to 3" = 1' Scale

French Horizontal 4-Wide 4-Wide Inactive / Active / Semi-Active / Inactive Section View

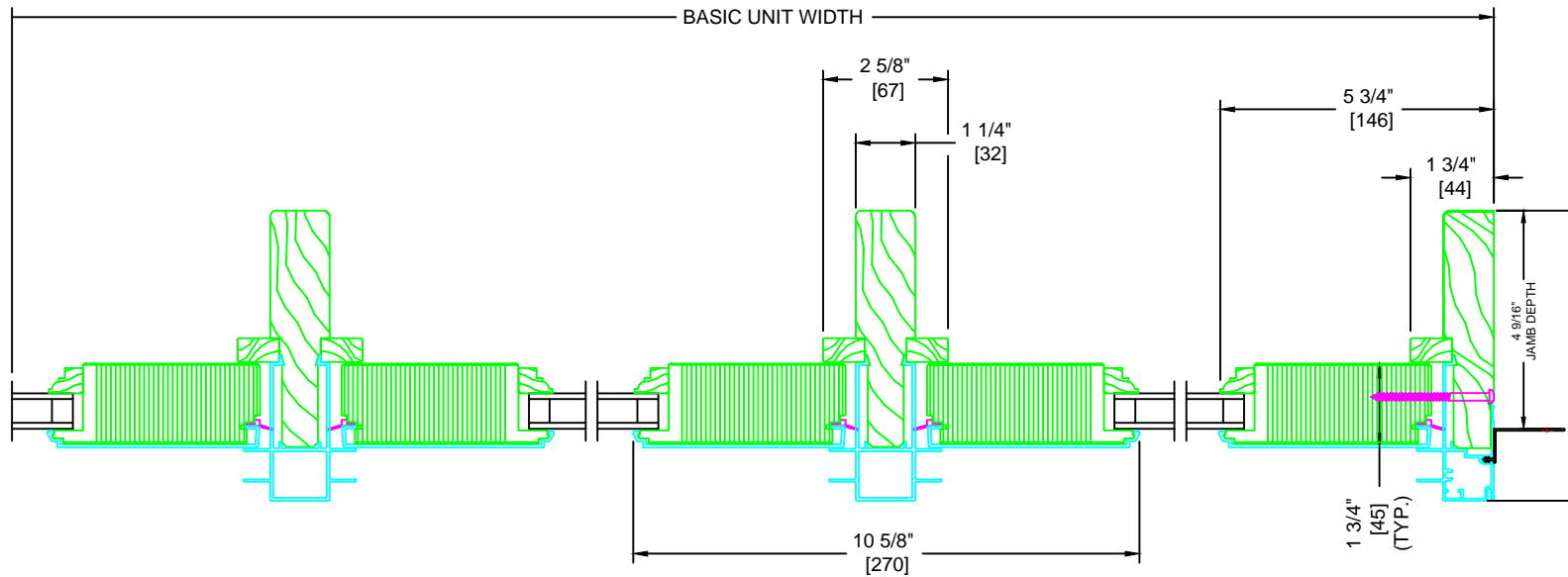




Aluminum Wood French Sliding Patio Doors

Jamb Details
Page 1 of 1
Drawn to Full Scale

French Horizontal 4-Wide Section View, Fixed / Fixed / Fixed / Fixed, Custom

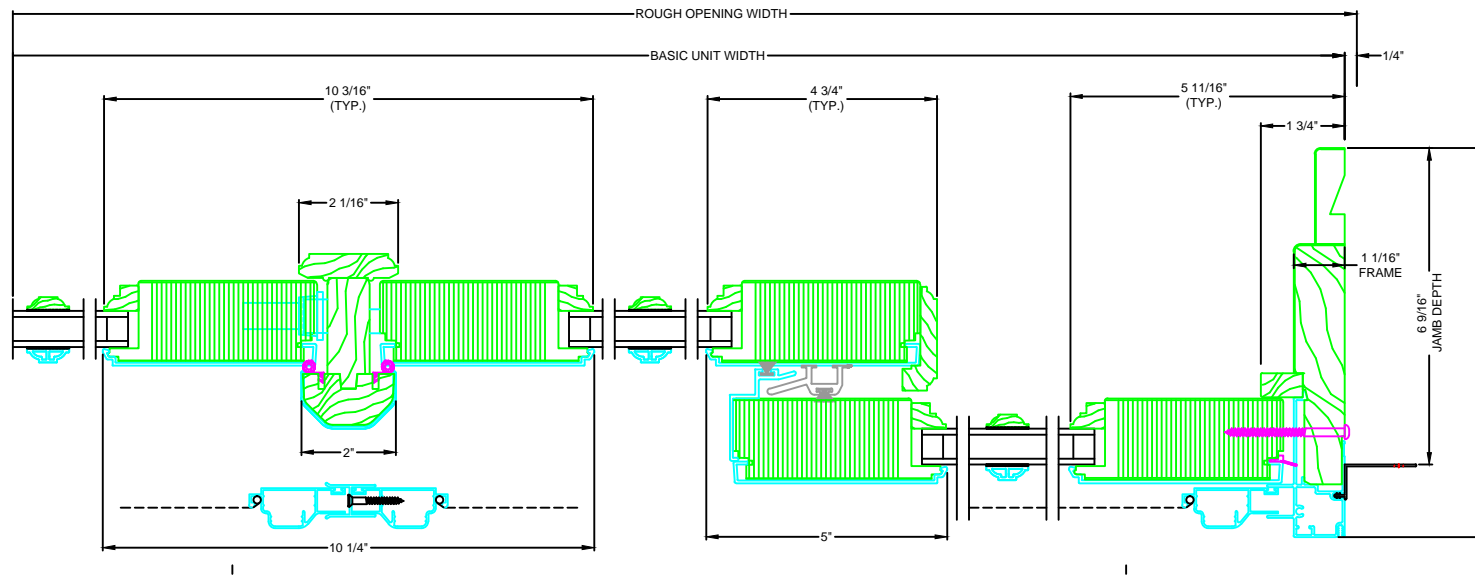




Aluminum Wood French Sliding Patio Doors with 6 9/16" Jamb

Jamb Details
Page 4 of 4
Drawn to Full Scale
Printed to 3" = 1' Scale

French Horizontal 4-Wide Inactive / Active / Semi-Active / Inactive Section View

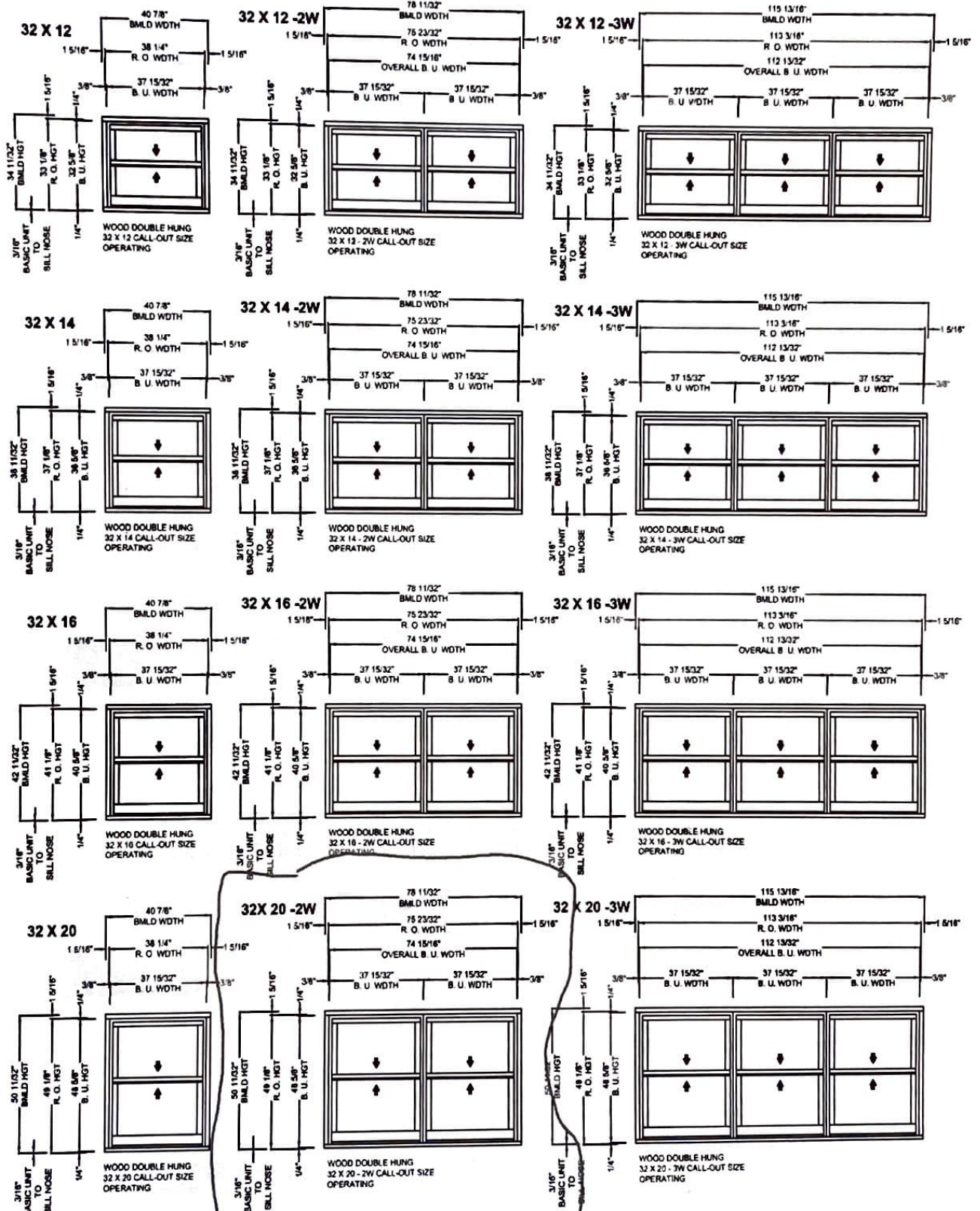




All Wood Tilt Double Hung Windows

Available in 50/50,
60/40 & 40/60 Splits

32" Glass Unit Widths;
1, 2 & 3 Wide Units
Scale: 1" = 1"
Page 1 of 3



Approx. Twin DH Size