

PROJECT SCHEDULE

SIGN #	SIGN TYPE/ DESCRIPTION	QTY.
A	EDGE LIT HALO LIT CHANNEL LETTERS	ONE (1)
F	DOOR HOURS VINYL	ONE (1)

PROJECT:
VanLeeuwen
ICE CREAM & MILKSHAKES

GEORGETOWN
3245 PROSPECT ST NW
WASHINGTON, DC 20007

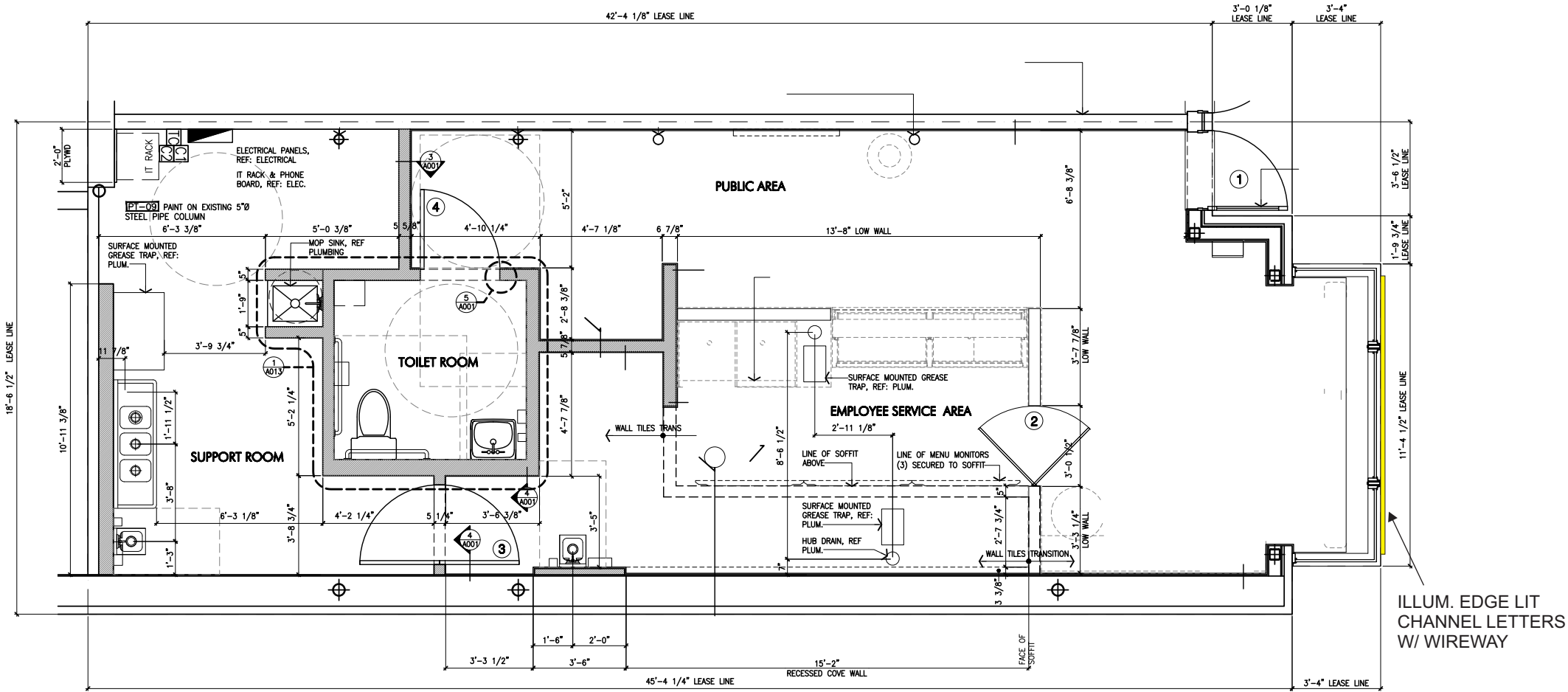
REVISIONS

#	DATE	DB	NOTES
R1	11/04/2022	JM	R1-GO WITH EDGE LIT OPTION R1-ADD WINDOW & DOOR VINYL
R2	11/17/2022	JM	R2-REMOVE BLADE, WINDOW & DOOR VINYL R2-ADD HOURS VINYL

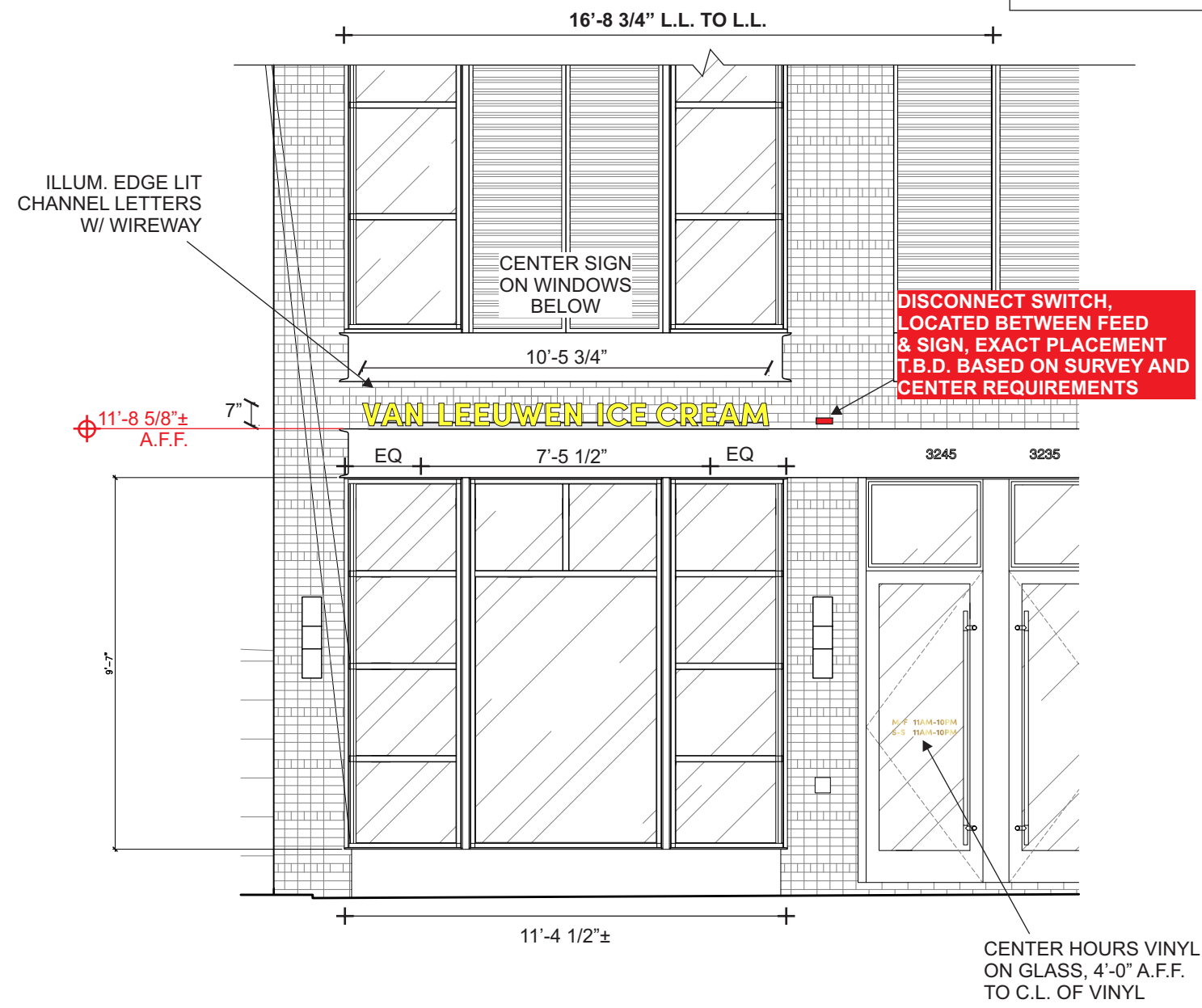
VICINITY MAP



FLOOR PLAN
SCALE: 3/16"=1'-0"



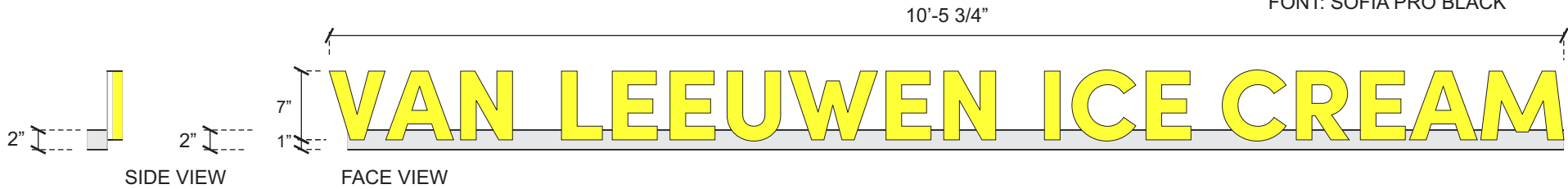
STOREFRONT ELEVATION
SCALE: 1/4"=1'-0"



SIGN ELEVATION
SCALE: 3/4"=1'-0"

QTY.: ONE (1) NON-ILLUM.
PLATE LETTERS ON A CUSTOM BRACKET

FONT: SOFIA PRO BLACK



EXACT SIZE AND SHAPE OF
SUPPORT DETERMINED
IN PRODUCTION

	<p>11 Azar Court • P.O. Box 24186 Baltimore, Maryland 21227 T: 410-247-5300 • F: 410 247-1944</p> <p>Reproduction In Whole or Part Prohibited without Express Permission of Triangle S & S © TSS</p>	<p>CLIENT & LOCATION</p> <div><p>ICE CREAM & MILKSHAKES</p></div> <p>GEORGETOWN 3245 PROSPECT ST NW WASHINGTON, DC 20007</p>	LEAD NO. 209004 T2	DATE 10/31/2022	REVIEWED BY	SHEET NO. 3 OF 5
			SM - PM ZF	DRAWN BY JM	SEG. NO.	

EDGE LIT CHANNEL LETTER / LED ILLUM. / EXTERIOR INSTALL / FLUSH MOUNTED TO CUSTOM BRACKET

SCALE: N.T.S.

(A) FACE		(I) WIRING	
MATERIAL:	S.S.	I-C	1/2" O.D. TRUE KONEK PVC TUBE
COLOR/FINISH:	RAL 1016 SULPHUR YELLOW	I-F	TO ELECTRICAL FEED
(C) RETURNS		I-S	U.L. APPROVED LOW VOLTAGE CLASS II WIRING
DEPTH:	1 1/2" O.A.	ALL CONNECTIONS TO BE IN WATERPROOF BOXES	
MATERIAL:	S.S.	(J) POWER SUPPLY	
COLOR/FINISH:	RAL 1016 SULPHUR YELLOW	TYPE:	REMOTE LED POWER SUPPLY HOUSE IN FRONT
(D) BACKS:		ACCESS WEATHER-PROOF LED POWER SUPPLY BOX.	
MATERIAL:	1/2" CLEAR ACRYLIC, SANDED RETURNS.	VOLTAGE:	120V
VINYL:	BLOCK OUT (WHITE STICKY SIDE TOWARDS LETTER)	(M) MOUNTING SEE MOUNTING NOTE.	
(E) INSIDE OF CAN		M-1	1" ALUM. ANGLE VERSALOC TO BACK.
COLOR:	WHITE	M-2	FLUSH-FITTING MECH. FASTENER.
(F) ILLUMINATION:		M-3	HOLD CLOSE SCREW
TYPE:	STANDARD 6500K WHITE LEDS	M-4	10-24 ALL-THREAD STUD, NUT & WASHER
ALL WIRES TO BE TERMINATED W/ A MECHANICAL UL LISTED FASTENER		M-5	MECHANICAL FASTENERS THRU TO CHANNEL
(G) SUPPORT:		IN CANOPY V.I.F.	
G-1	WIREWAY	(W) WEEP HOLES: 1/4" DIA. WITH COVER	
MATERIAL:	2" x 2" ALUM. TUBE, ACCESS DOORS @ BACK		
G-2	BACKER		
MATERIAL:	1/8" ALUM.		
FINISH:	MATCH CANOPY V.I.F.		

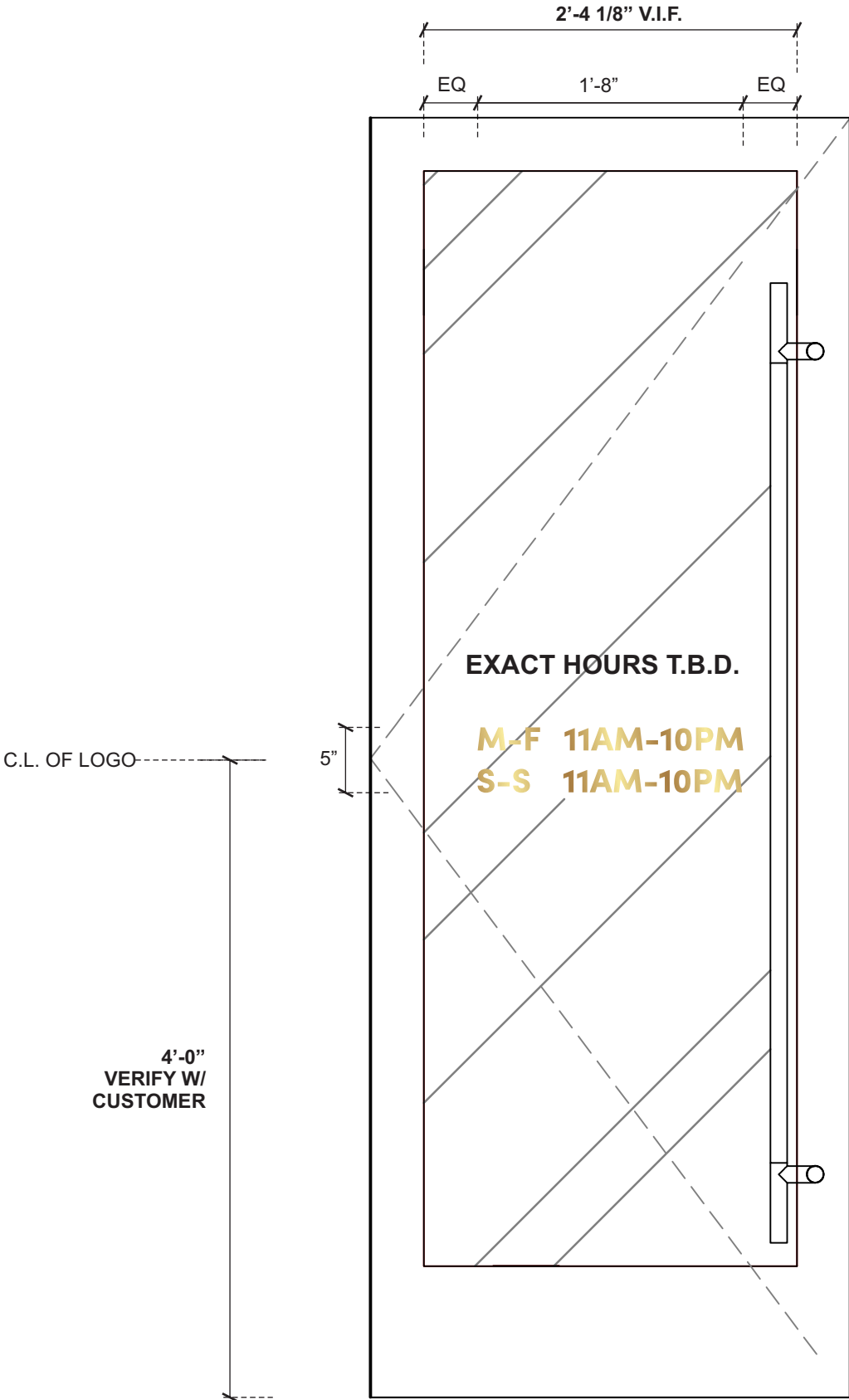
- 120V INSTALL**
1. CUSTOMER G.C. TO PROVIDE ADEQUATE WOOD OR MTL. BLOCKING IN CORRELATION W/ FACADE FRAMING AS REQUIRED.
 2. INSTALLER IS TO V.I.F. & PROVIDE THE PROPER NON-CORROSIVE MOUNTING HARDWARE TO ENSURE SAFE INSTALLATION.
 3. ALL EXTERIOR FACADE PENETRATIONS TO BE WATERTIGHT.
 4. INSTALLATION TO MEET CURRENT N.E.C., U.L. & LOCAL CODES. LOCATION OF THE DISCONNECT SWITCH AFTER INSTALLATION SHALL COMPLY WITH ARTICLE 600.6(A) (1) OF THE NATION ELECTRICAL CODE

- ELECTRICAL**
1. ALL ELECTRICAL COMPONENTS TO BE U.L. APPROVED.
 2. CUSTOMER IS RESPONSIBLE FOR ONE (1) 120v/ 20a DEDICATED CIRCUIT w/ GROUND PER SIGN TO WITHIN 6' OF SIGN.
 3. THIS SIGN IS INTENDED TO BE INSTALLED IN ACCORDING W/ THE REQUIREMENTS OF ARTICLE 600 OF THE NATIONAL ELECTRICAL CODE AND/OR OTHER APPLICABLE LOCAL CODES. THIS INCLUDES PROPER GROUNDING & BONDING OF THE SIGN.

- FABRICATOR**
1. PLACEMENT OF LIGHTING ELEMENTS FOR OPTIMUM ILLUMINATION OF SIGN TO BE DETERMINED IN PRODUCTION.
 2. MANUFACTURER & U.L. LABELS TO BE APPLIED & VISIBLE FROM THE GROUND. LOCATED ON THE LAST CHANNEL LETTER OR END OF THE SIGN BOX/FREESTANDING SIGN

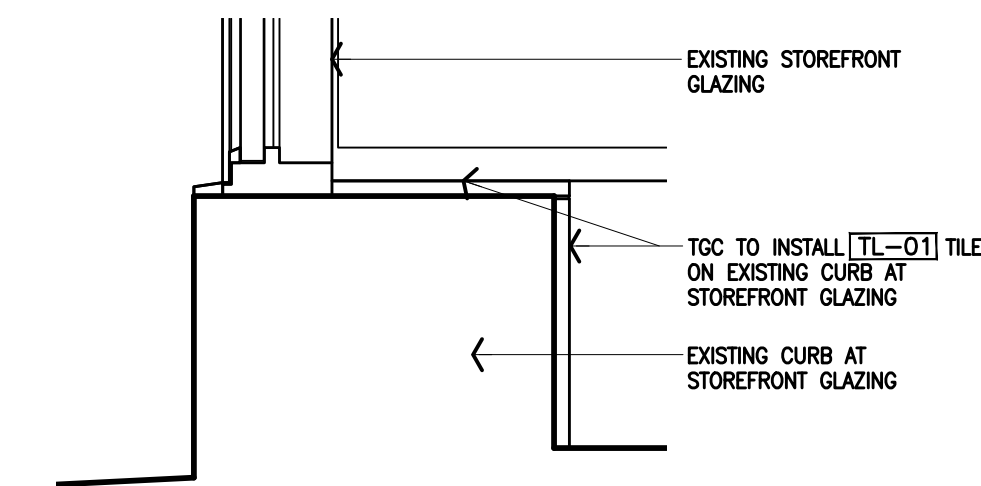


DOOR HOURS VINYL ELEVATION
SCALE: 1"=1'-0"

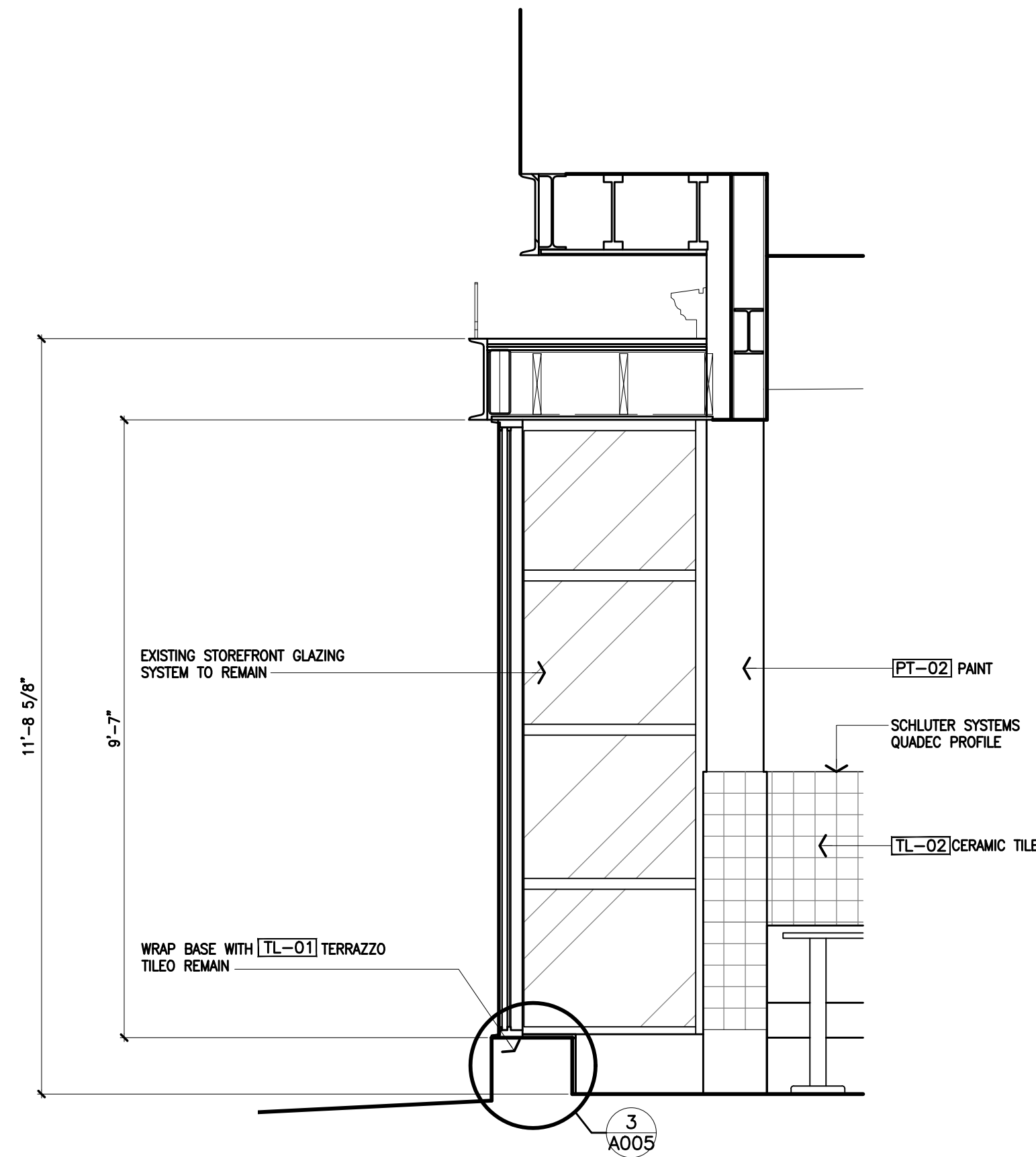


QTY.: ONE (1)
DOOR VINYL
MIRROR GOLD
APPLIED SECOND SURFACE

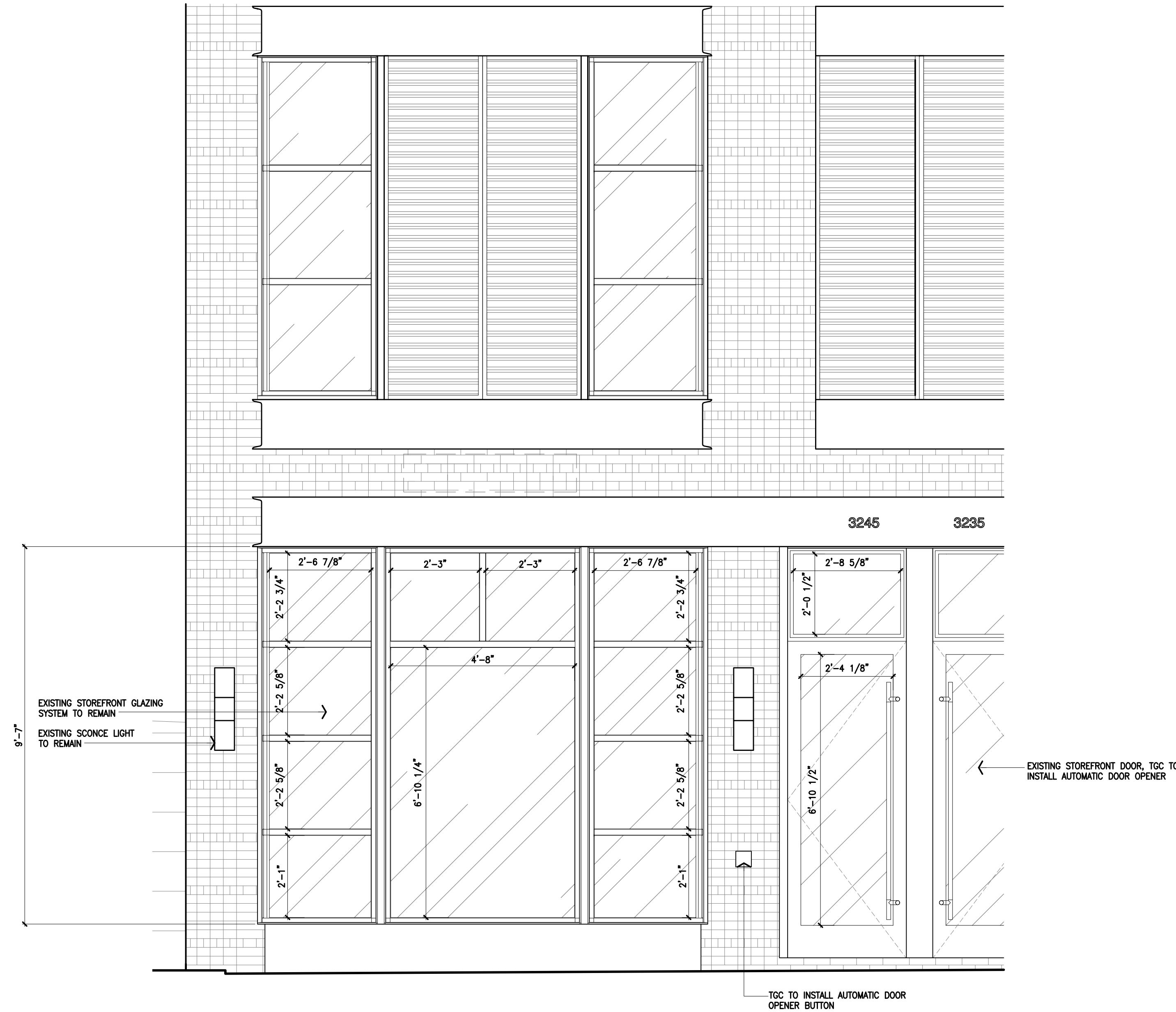
5" x 1'-8" = .7 SQ FT



3 Storefront Curb Detail
Scale 1 1/2" = 1'-0"



2 Storefront Section
Scale 1/2" = 1'-0"



1 Storefront Elevation
Scale 1/2" = 1'-0"

NOTE: SIGNAGE NOT SHOWN. SIGNS UNDER SEPARATE PERMIT. TGC TO VERIFY ALL ELECTRICAL REQUIREMENTS FOR ALL TENANT SIGNAGE

Revisions		
Date	Description	By
△		
△		
△		
△		
△		



