

# 1025 THOMAS JEFFERSON OGB CONCEPT REVIEW SUBMISSION

---

1025 THOMAS JEFFERSON ST

ALDUWALIYA ASSET MANAGEMENT

1025 THOMAS JEFFERSON WASHINGTON, DC 20007

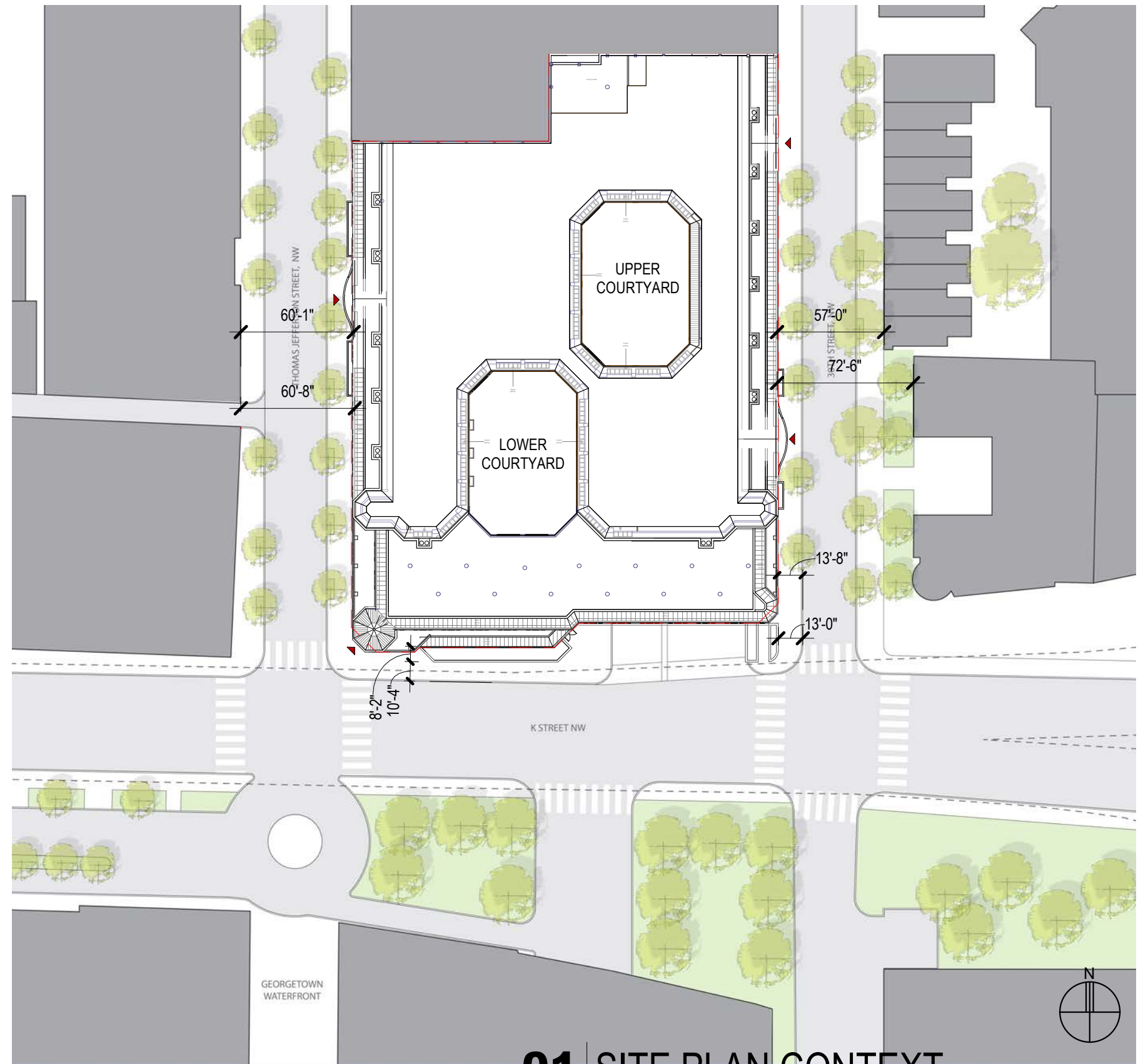
**hickok cole**

11/21/22

D0000



## 02 | GEORGETOWN CONTEXT



## 01 | SITE PLAN CONTEXT

1/64" = 1'-0"

0

1025 THOMAS JEFFERSON ST

ALDUWALIYA ASSET MANAGEMENT

As indicated

1025 THOMAS JEFFERSON WASHINGTON, DC 20007

**hickok cole**

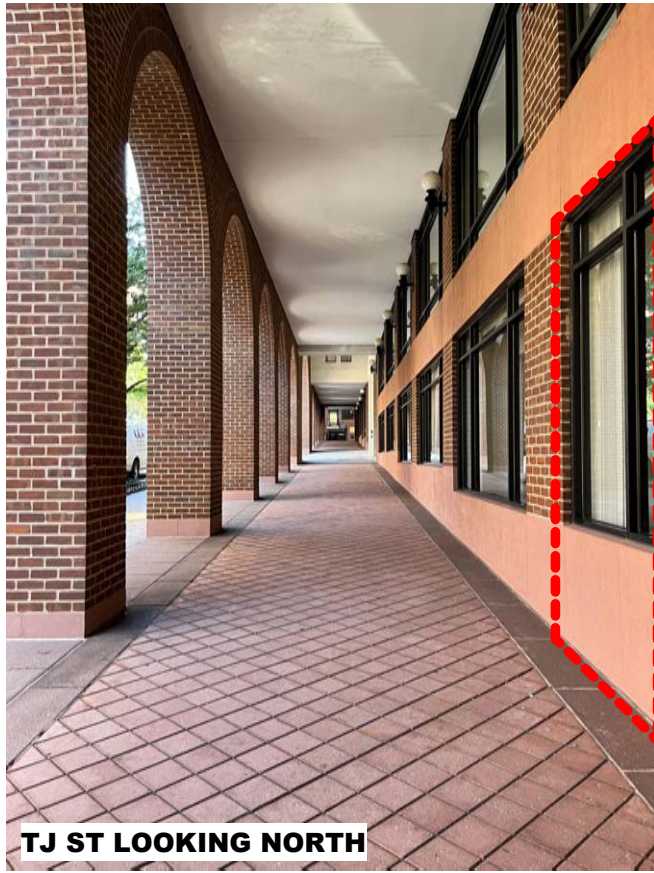
11/21/22

D0001





TJ ST LOOKING SOUTH



TJ ST LOOKING NORTH



LOWER COURTYARD STOREFRONT



LOWER COURTYARD STOREFRONT



TJ ST LOOKING NORTH



TJ ST RETAIL INTERIOR



TJ ST EXTERIOR ARCADE

1025 THOMAS JEFFERSON ST

ALDUWALIYA ASSET MANAGEMENT

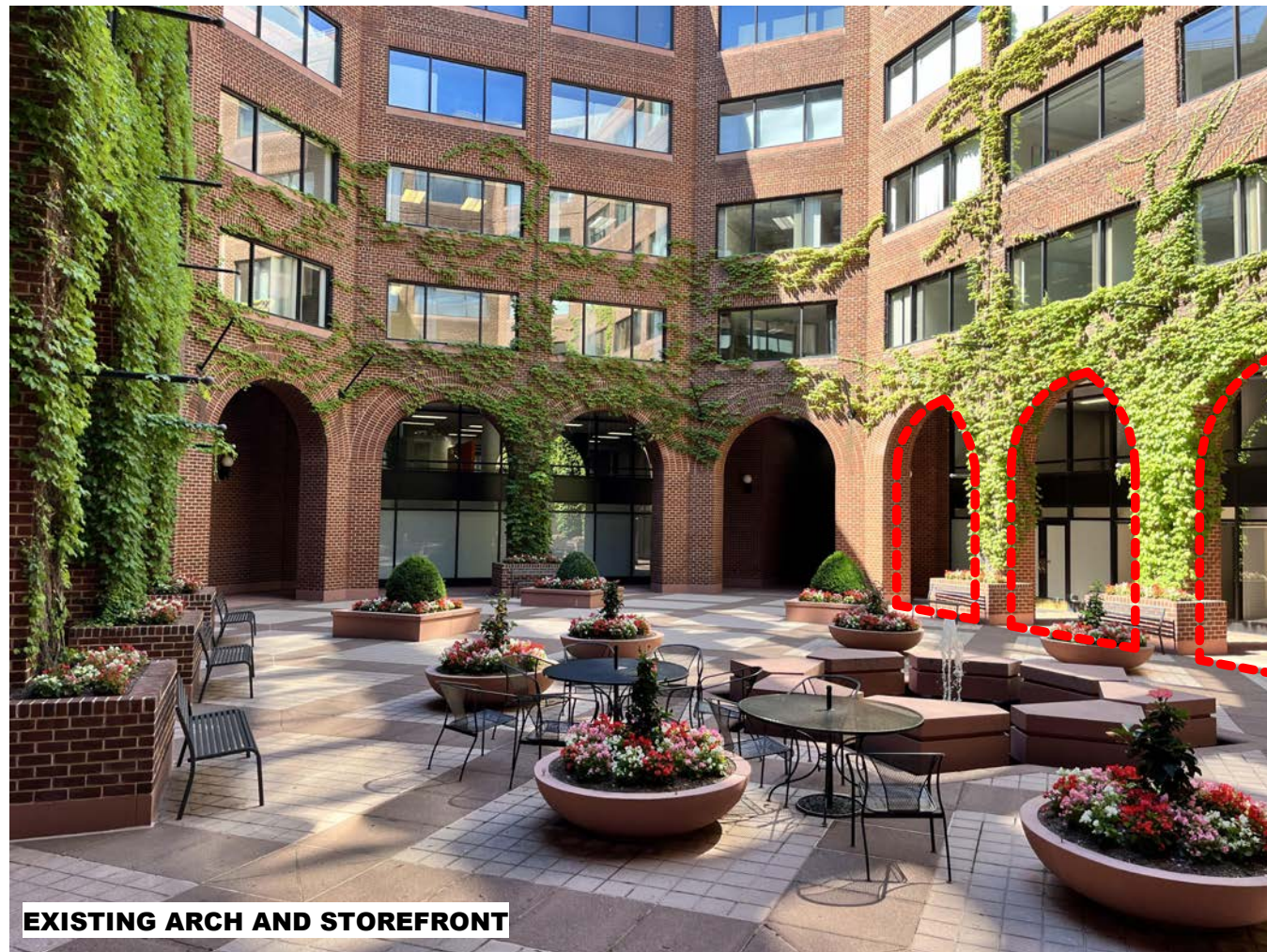
1025 THOMAS JEFFERSON WASHINGTON, DC 20007

**hickok cole**

11/21/22

D0002





**EXISTING ARCH AND STOREFRONT**



**PROPOSED STOREFRONT AT COURTYARD ARCH**



**EXISTING EXTERIOR DOOR ON TJ ST**



**DOOR EXAMPLE**

1025 THOMAS JEFFERSON ST

ALDUWALIYA ASSET MANAGEMENT

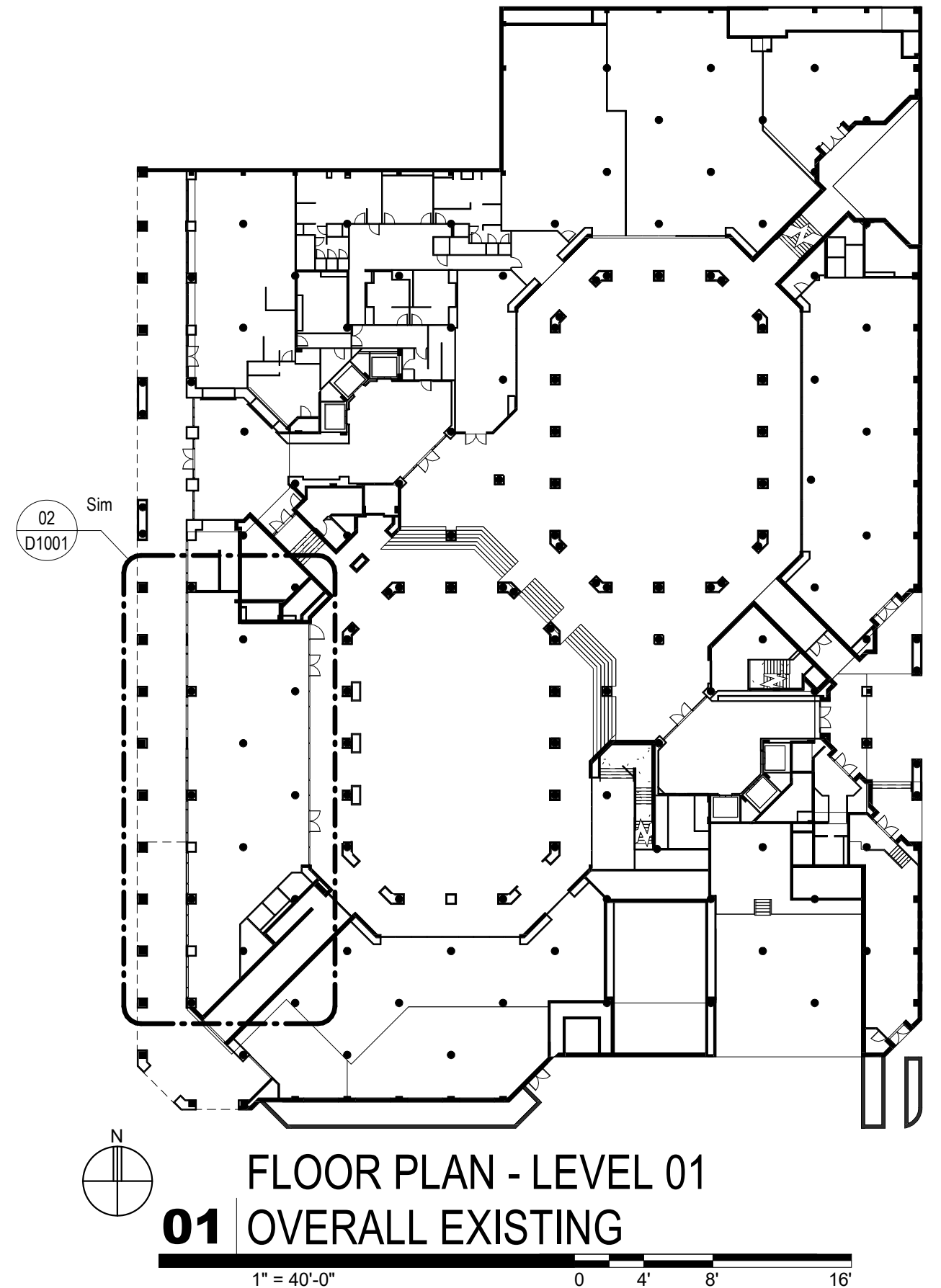
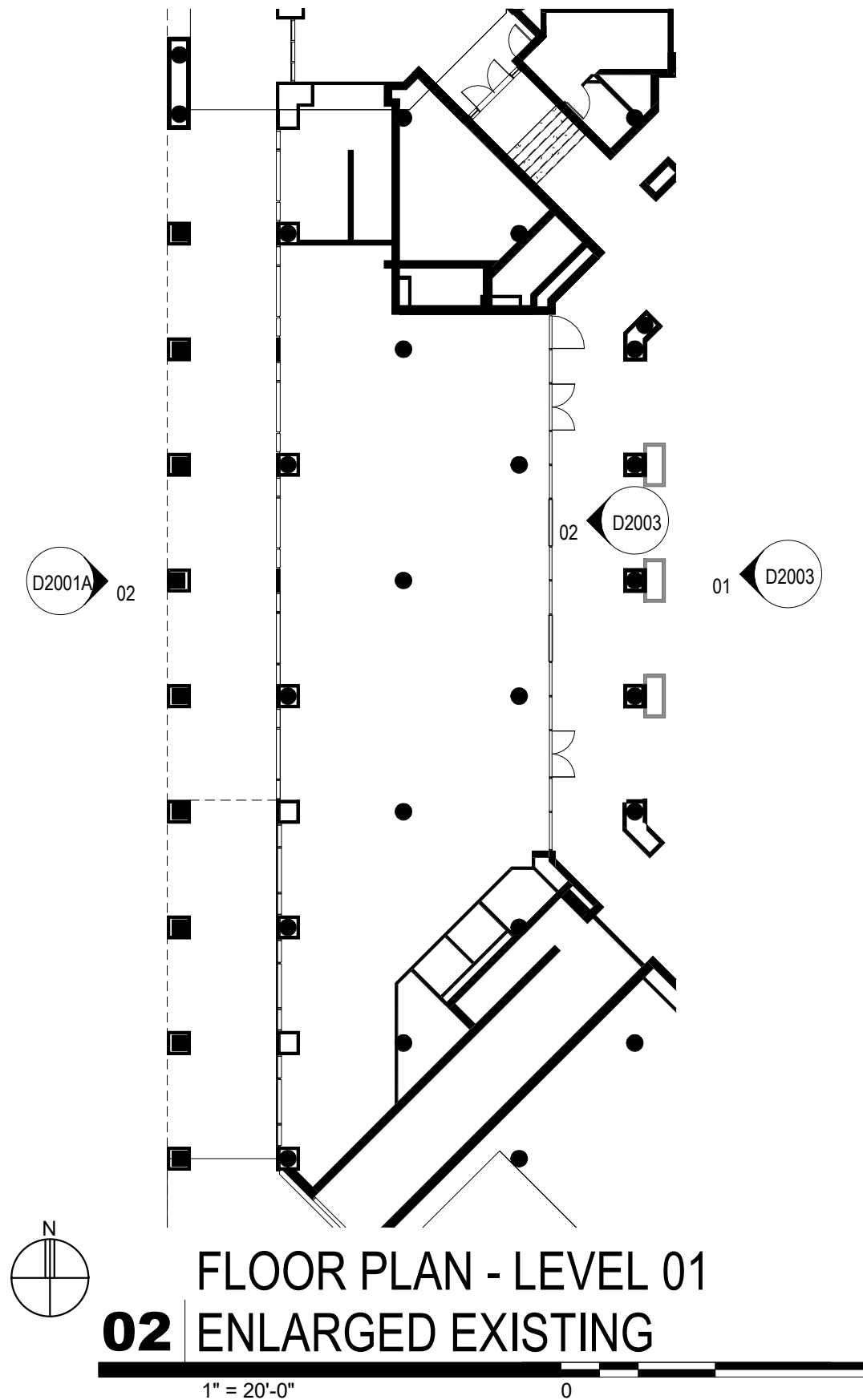
1025 THOMAS JEFFERSON WASHINGTON, DC 20007

**hickok cole**

11/21/22

D0003





1025 THOMAS JEFFERSON ST

ALDUWALIYA ASSET MANAGEMENT

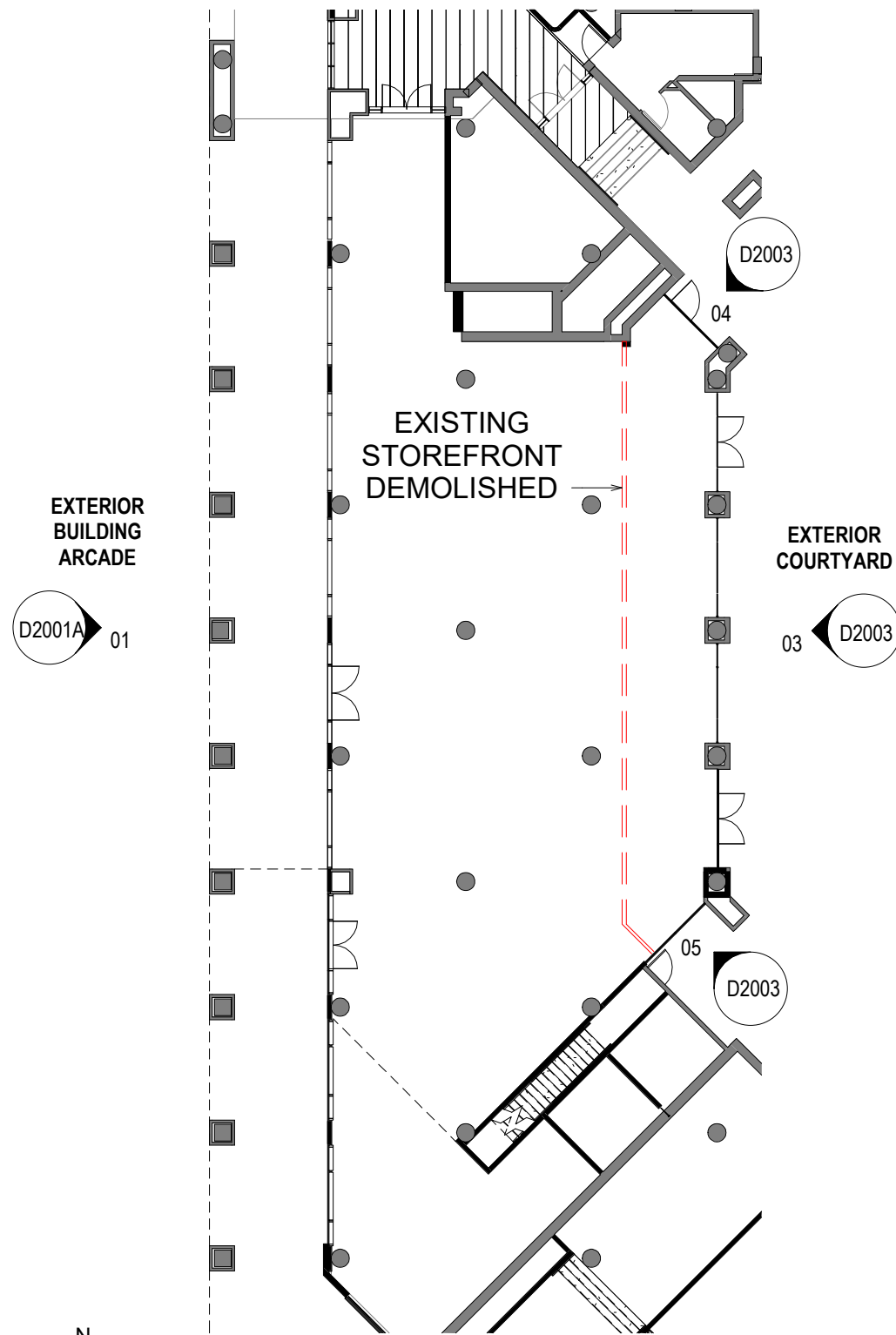
As indicated

1025 THOMAS JEFFERSON WASHINGTON, DC 20007

**hickok cole**

11/21/22

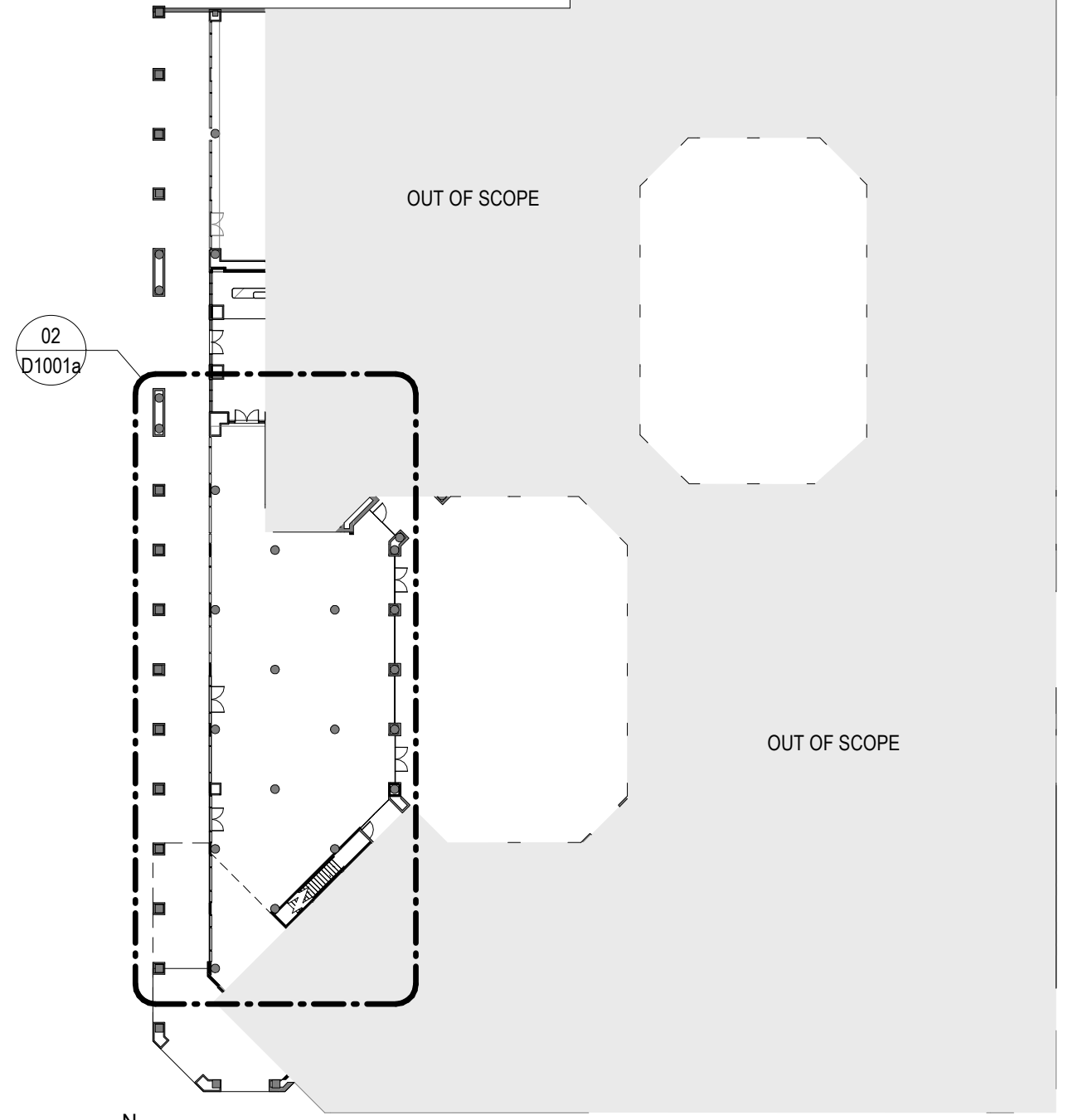
D1001



**02** FLOOR PLAN - LEVEL 01  
ENLARGED PROPOSED

1" = 20'-0"

0



**01** FLOOR PLAN - LEVEL 01  
OVERALL PROPOSED

1" = 40'-0"

0

4'

8'

16'

1025 THOMAS JEFFERSON ST

ALDUWALIYA ASSET MANAGEMENT

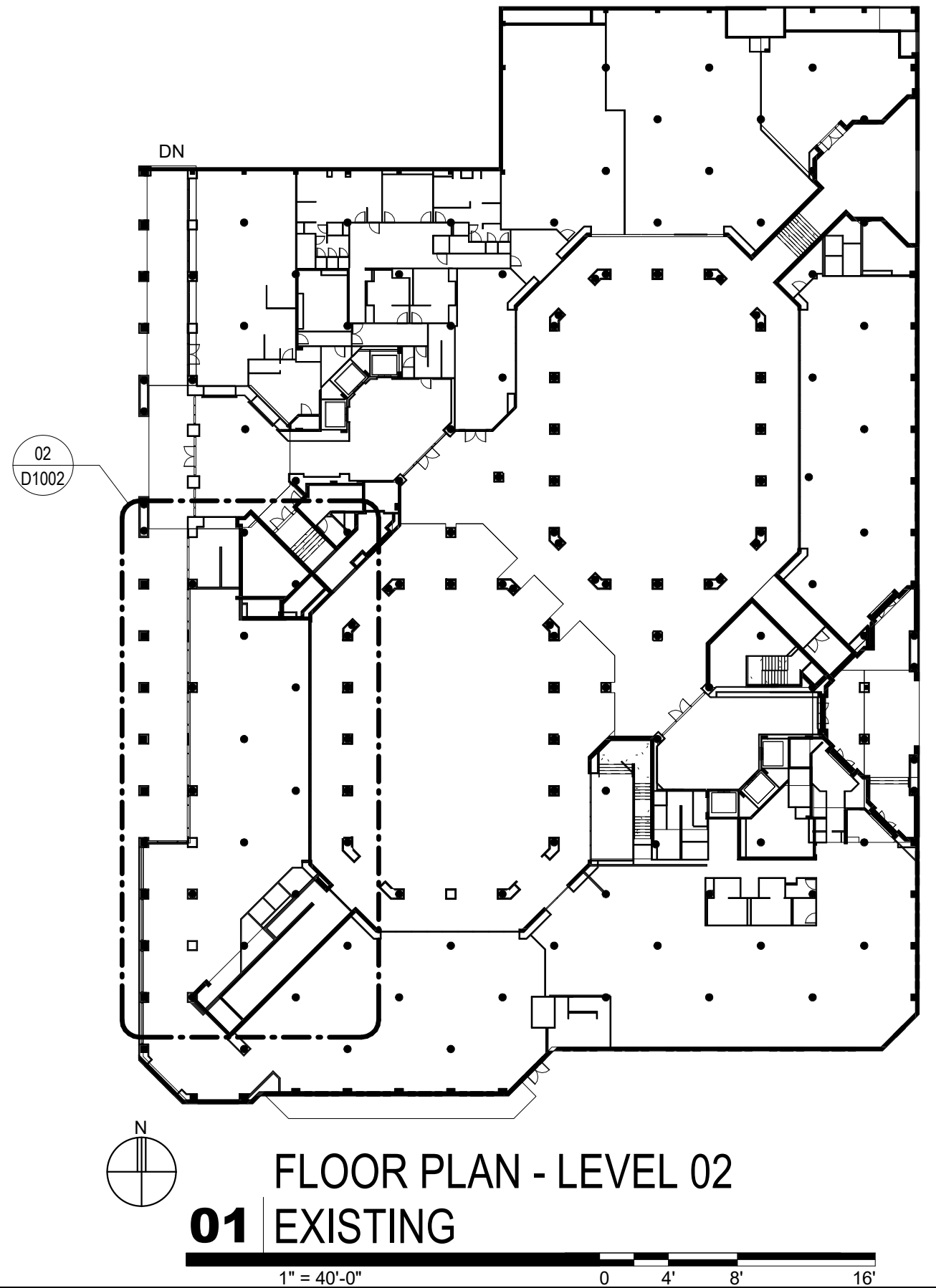
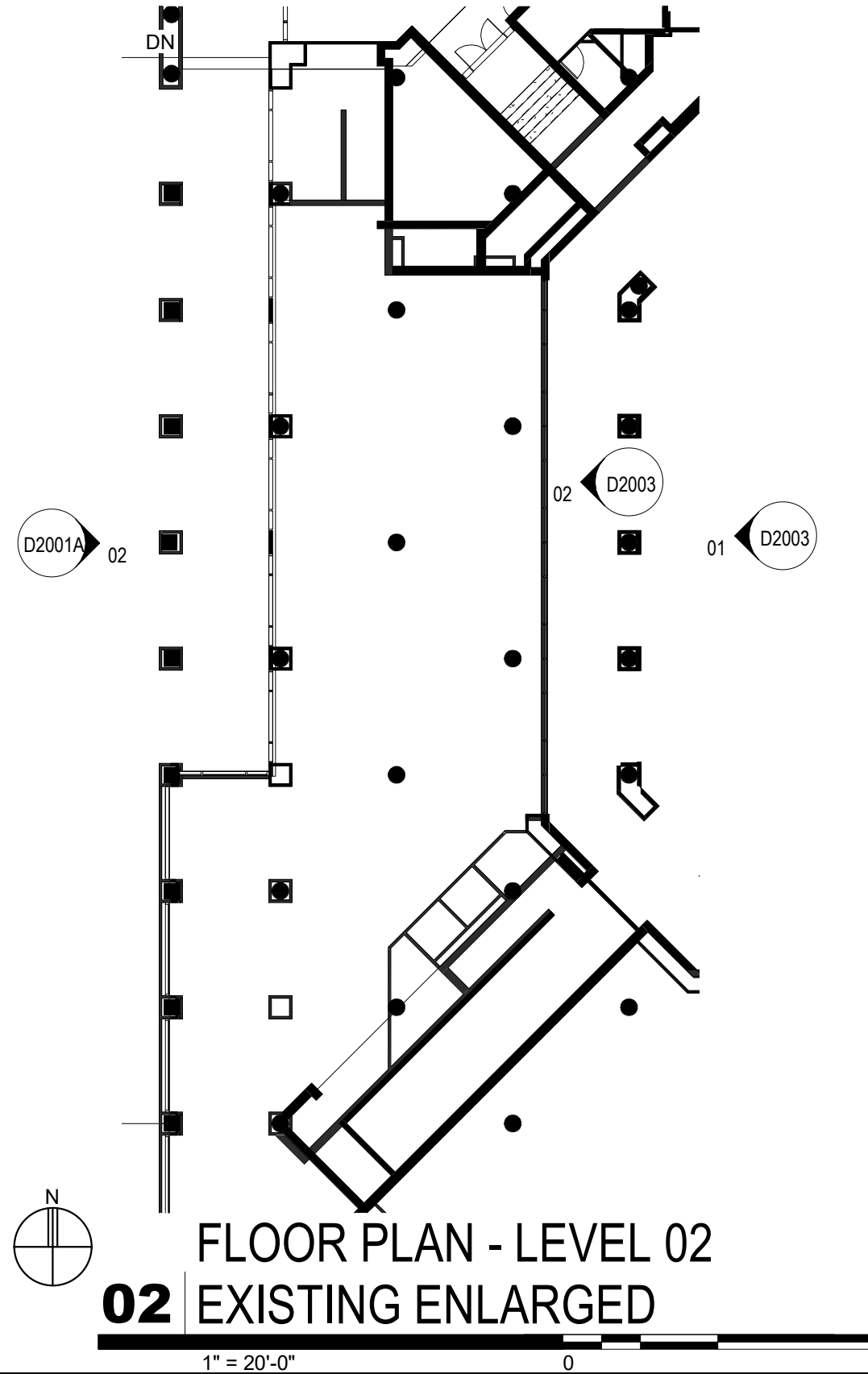
As indicated

1025 THOMAS JEFFERSON WASHINGTON, DC 20007

**hickok cole**

11/21/22

D1001a



1025 THOMAS JEFFERSON ST

ALDUWALIYA ASSET MANAGEMENT

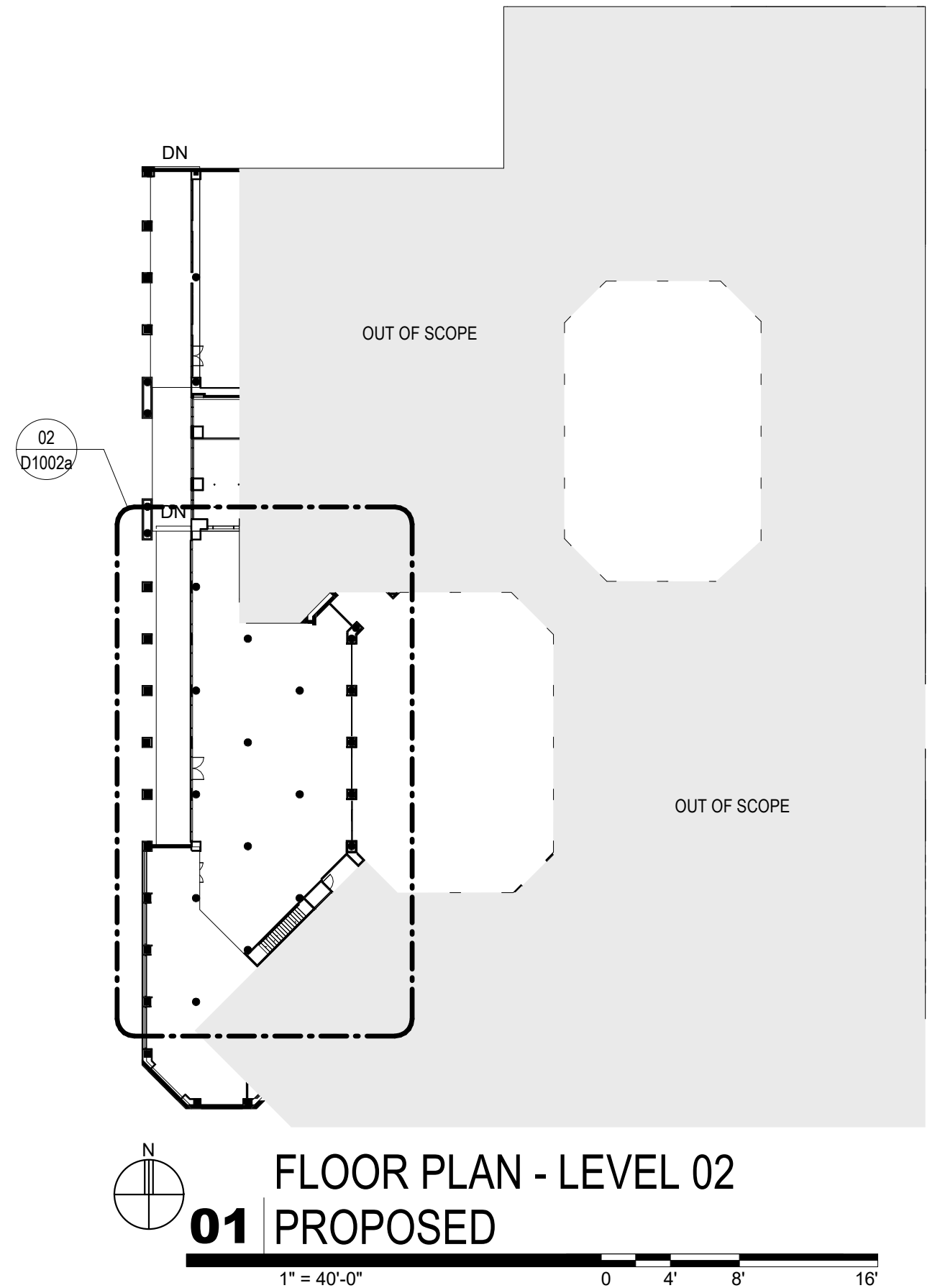
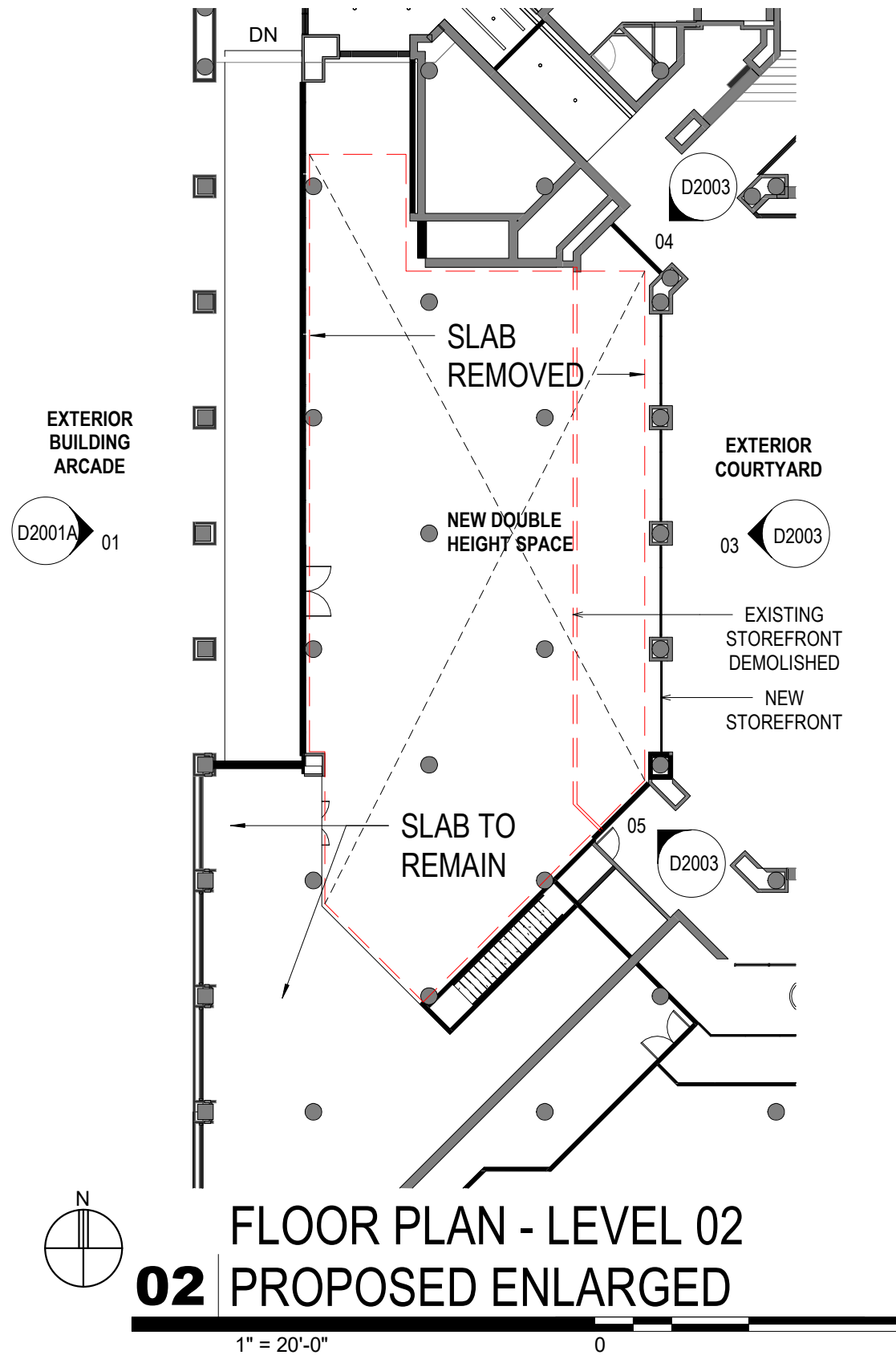
As indicated

1025 THOMAS JEFFERSON WASHINGTON, DC 20007

**hickok cole**

11/21/22

D1002



1025 THOMAS JEFFERSON ST

ALDUWALIYA ASSET MANAGEMENT

As indicated

1025 THOMAS JEFFERSON WASHINGTON, DC 20007

**hickok cole**

11/21/22

D1002a





**02** | ELEVATION WEST EXISTING



**01** | ELEVATION WEST PROPOSED

1025 THOMAS JEFFERSON ST

ALDUWALIYA ASSET MANAGEMENT

1" = 30'-0"

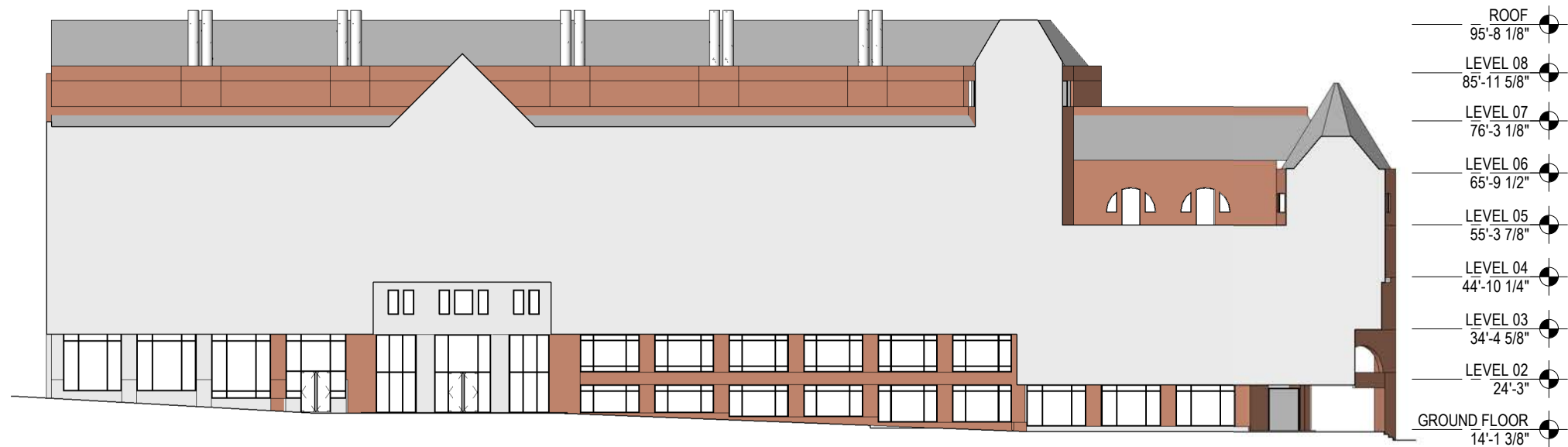
1025 THOMAS JEFFERSON WASHINGTON, DC 20007

**hickok cole**

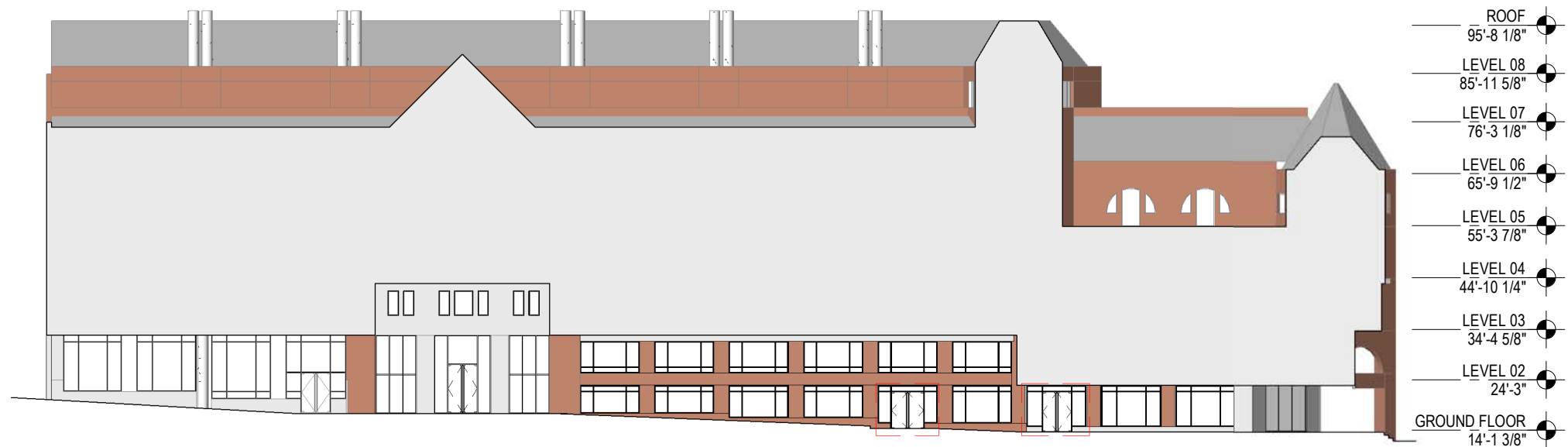
11/21/22

D2001





**02** | ELEVATION WEST EXISTING INTERIOR

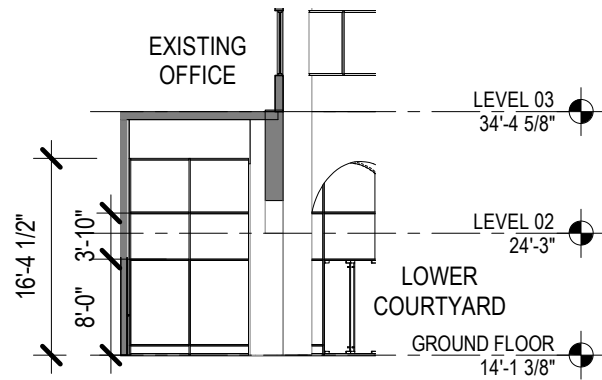


**01** | ELEVATION WEST PROPOSED INTERIOR

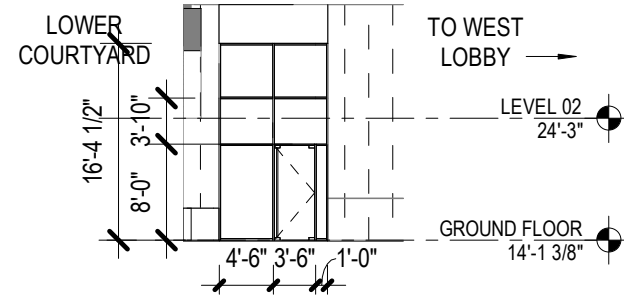
1025 THOMAS JEFFERSON ST

ALDUWALIYA ASSET MANAGEMENT  
 1" = 30'-0"  
 1025 THOMAS JEFFERSON WASHINGTON, DC 20007

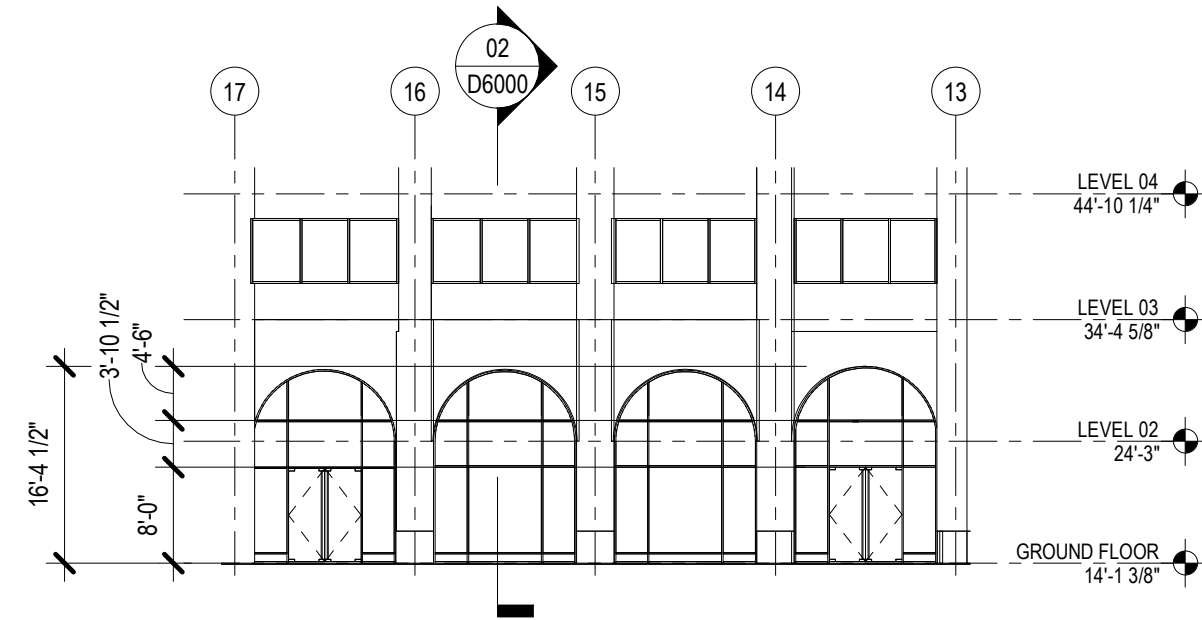




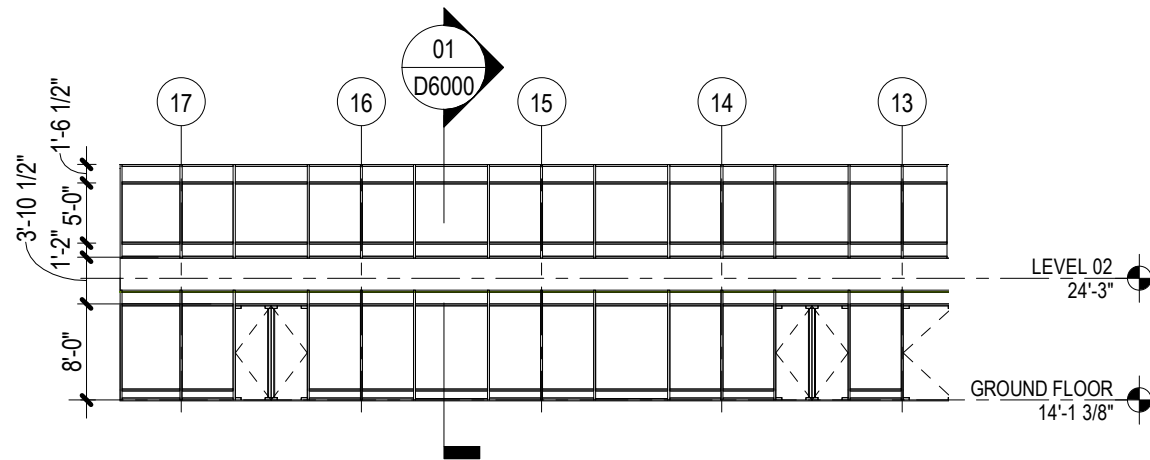
**05** | LOWER COURTYARD W - PROPOSED S



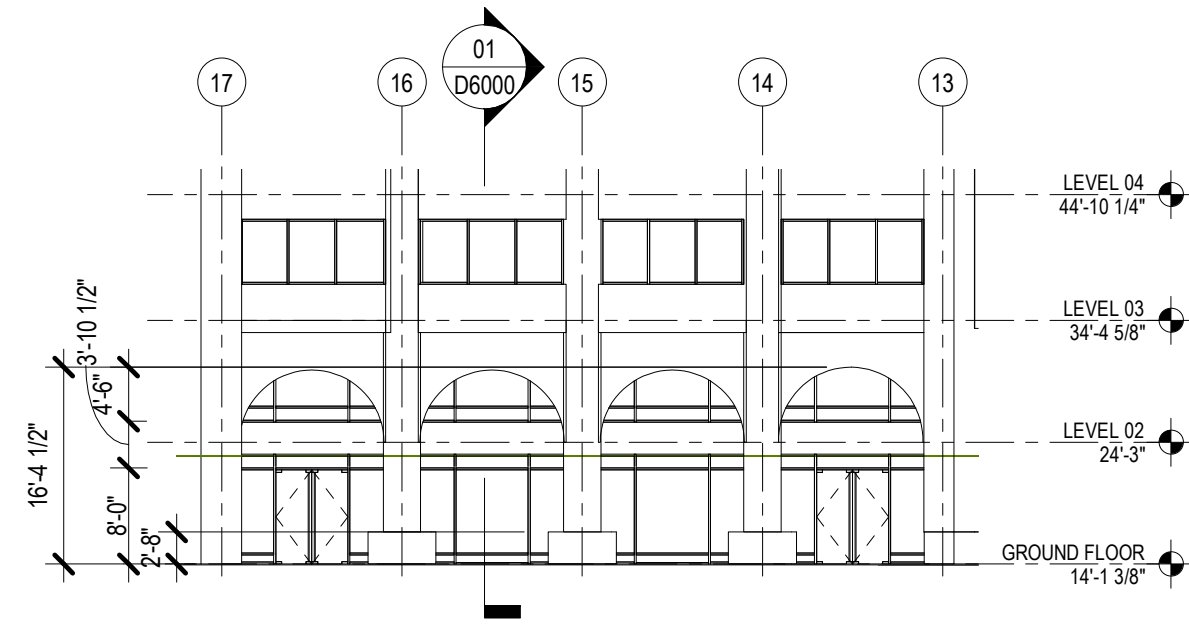
**04** | LOWER COURTYARD W - PROPOSED N



**03** | LOWER COURTYARD W - PROPOSED



**02** | LOWER COURTYARD W - EXISTING INTERIOR



**01** | LOWER COURTYARD W - EXISTING

1025 THOMAS JEFFERSON ST

ALDUWALIYA ASSET MANAGEMENT

1/16" = 1'-0"

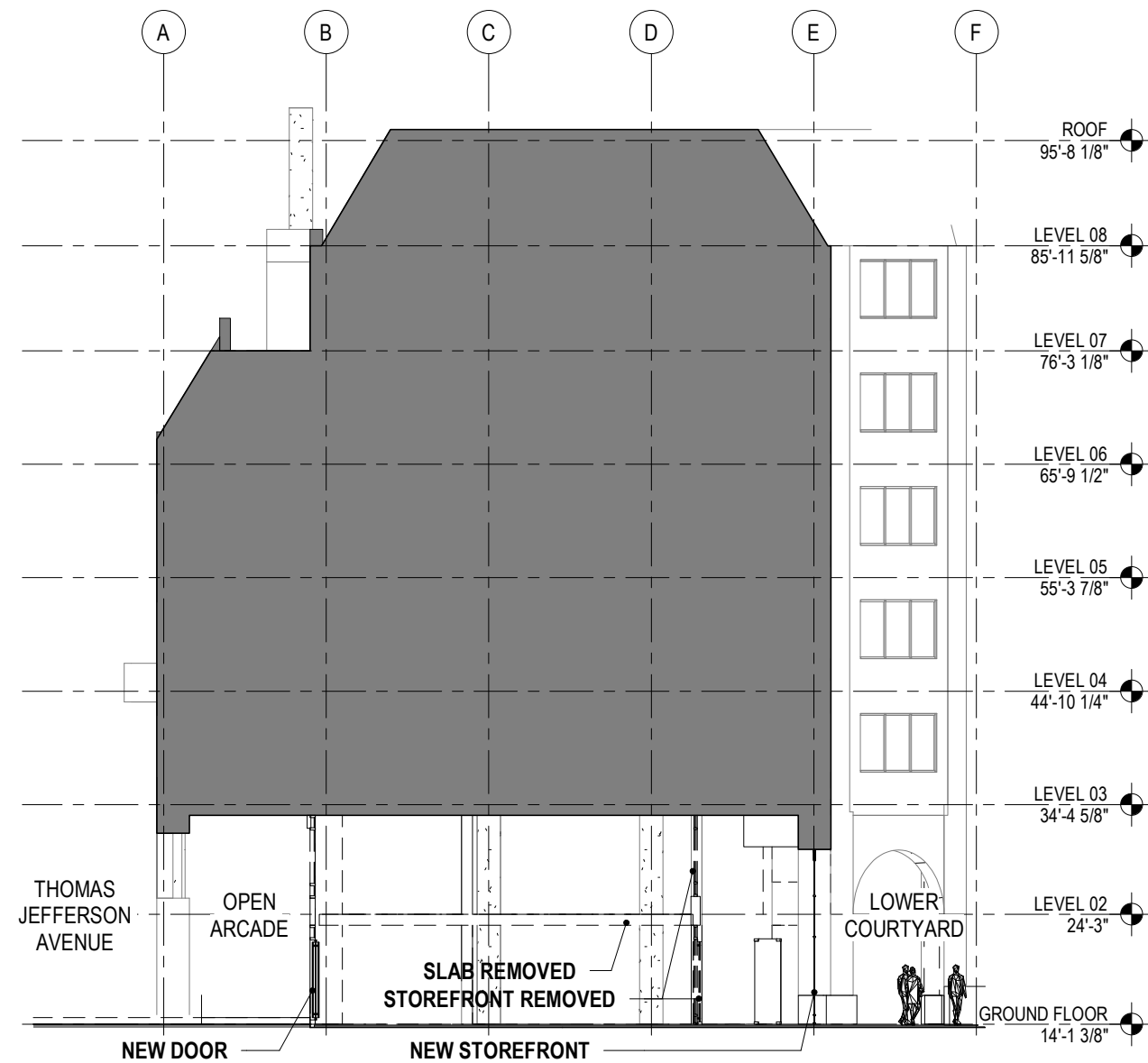
1025 THOMAS JEFFERSON WASHINGTON, DC 20007

**hickok cole**

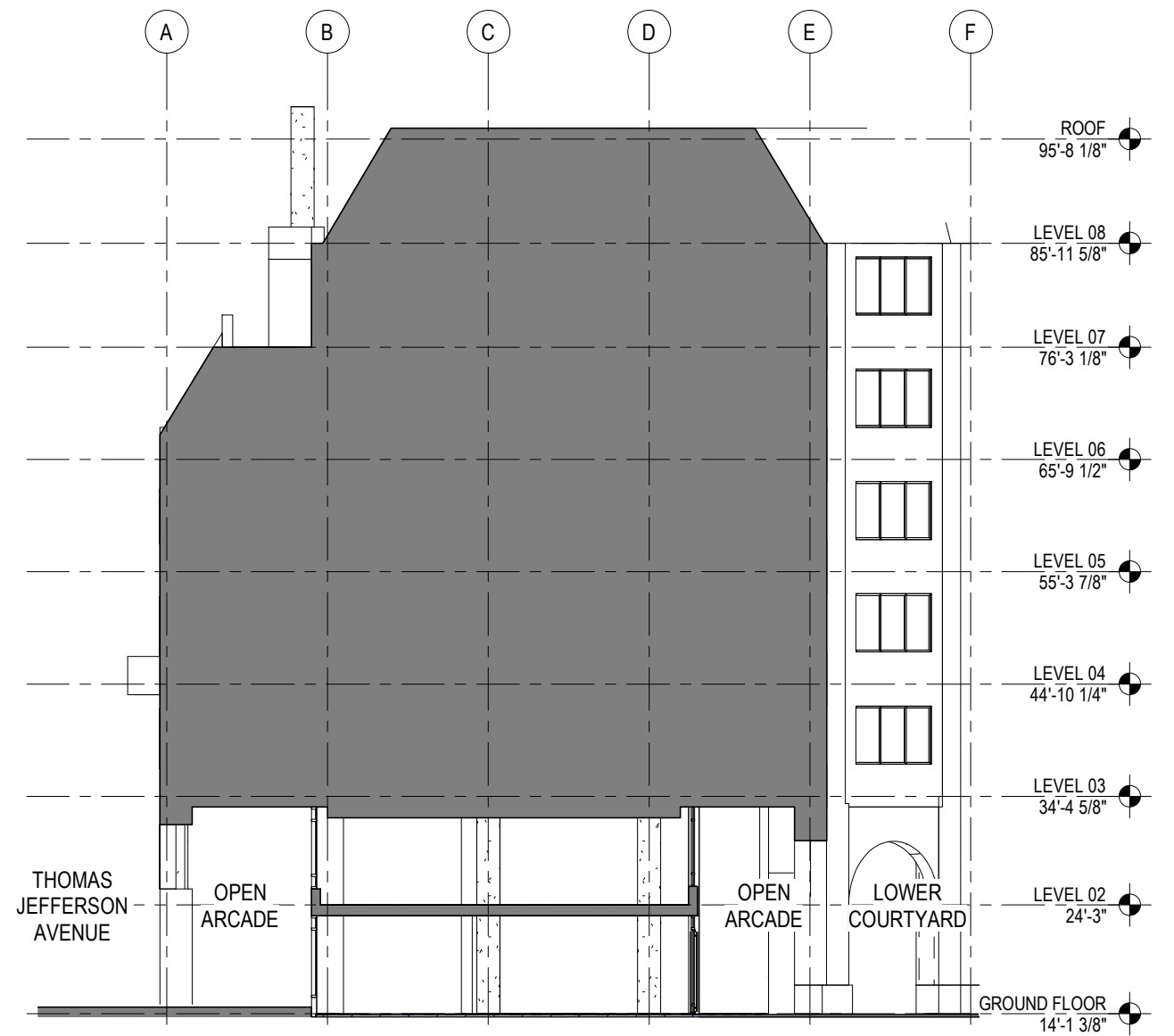
11/21/22

D2003





**02** | COURTYARD SECTION PROPOSED



**01** | COURTYARD SECTION EXISTING

# 1025 THOMAS JEFFERSON ST

ALDUWALIYA ASSET MANAGEMENT

1/16" = 1'-0"

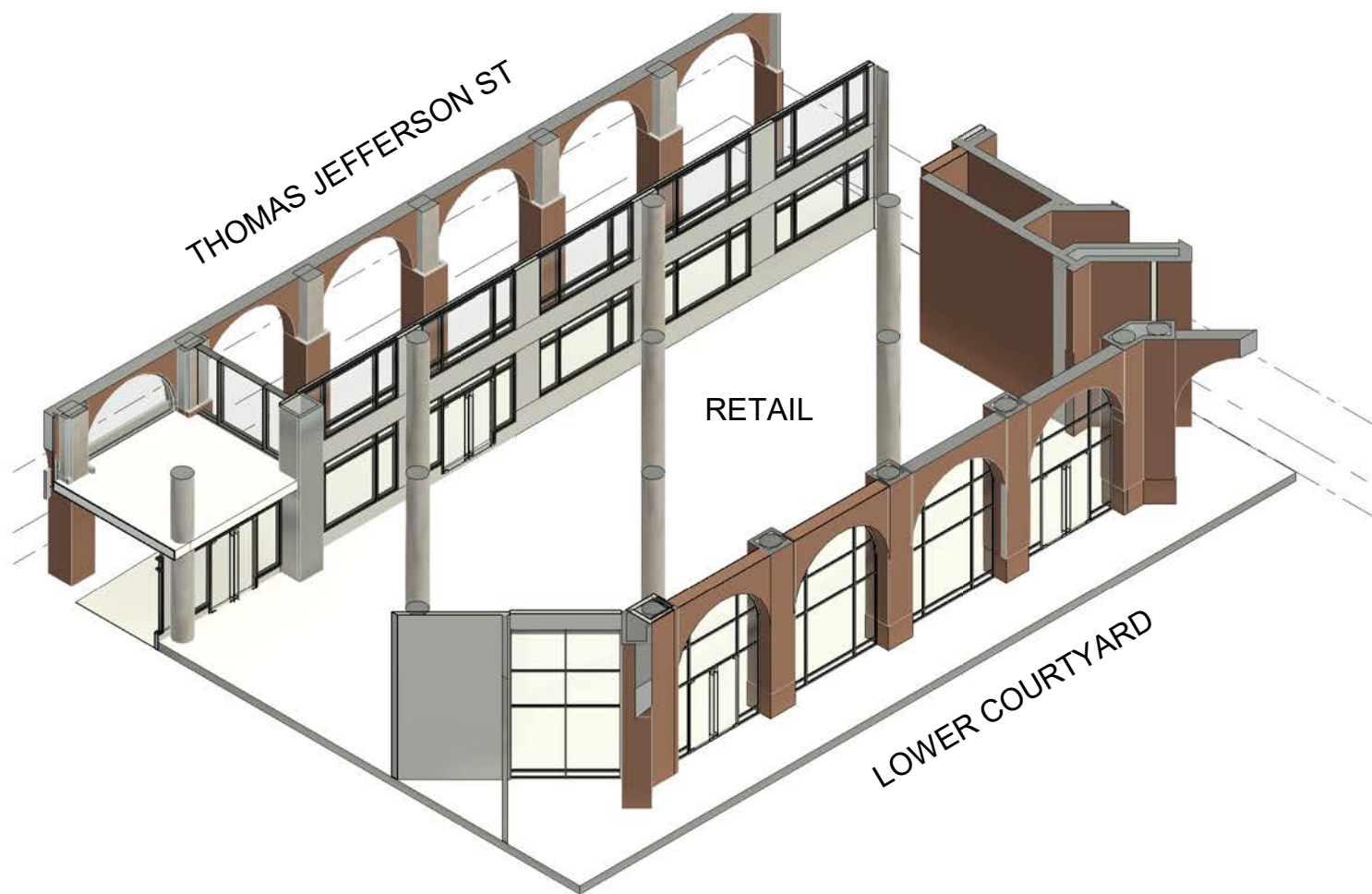
1025 THOMAS JEFFERSON WASHINGTON, DC 20007

**hickok cole**

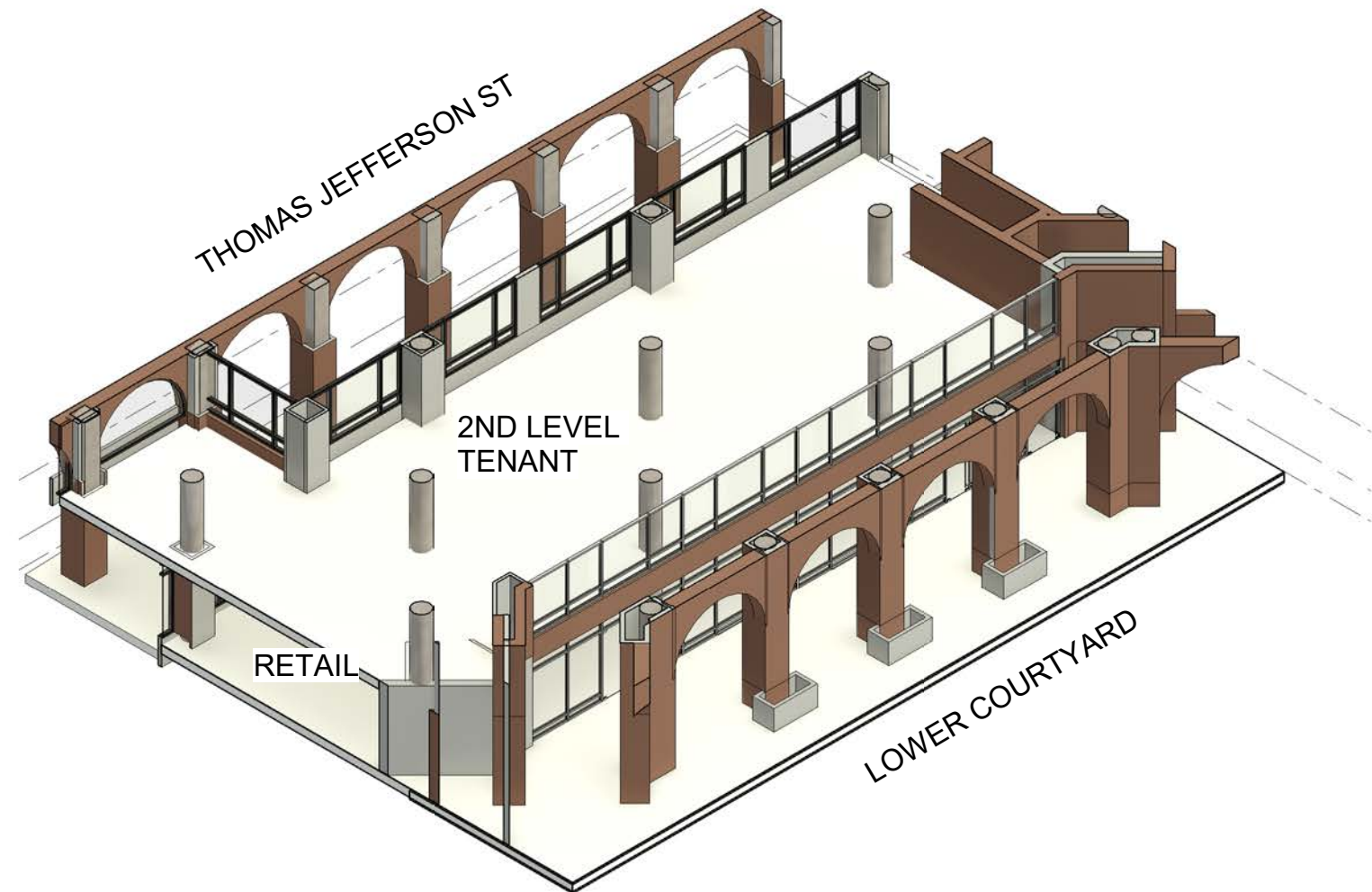
11/21/22

D6000





**02** | AXON - PROPOSED RETAIL



**01** | AXON - EXISTING RETAIL

1025 THOMAS JEFFERSON ST

ALDUWALIYA ASSET MANAGEMENT

1025 THOMAS JEFFERSON WASHINGTON, DC 20007

**hickok cole**

11/21/22

D7000





**EXISTING ARCADE AND STOREFRONT**



**EXISTING ARCADE AND STOREFRONT**



**PROPOSED ARCADE AND STOREFRONT**

1025 THOMAS JEFFERSON ST

ALDUWALIYA ASSET MANAGEMENT

1025 THOMAS JEFFERSON WASHINGTON, DC 20007

**hickok cole**

11/21/22

D7001





**PROPOSED GLASS AND DOOR AT LOWER COURTYARD N**



**PROPOSED GLASS AT LOWER COURTYARD S**

1025 THOMAS JEFFERSON ST

ALDUWALIYA ASSET MANAGEMENT

1025 THOMAS JEFFERSON WASHINGTON, DC 20007

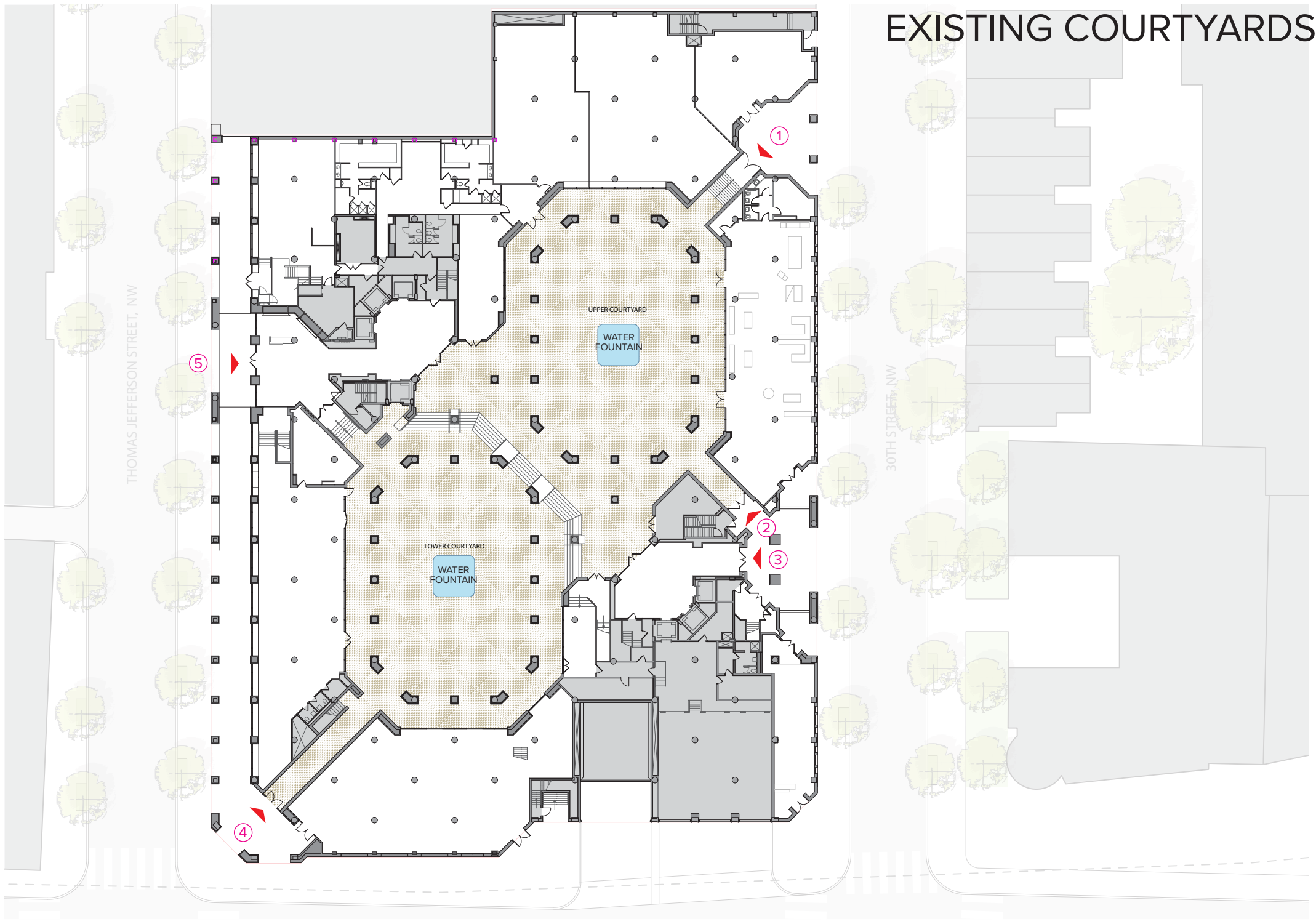
**hickok cole**

11/21/22 D7001a

# 1025 THOMAS JEFFERSON

## EXISTING COURTYARDS

- ① NORTH EAST CONNECTION TO UPPER COURTYARD
- ② EAST LOBBY CONNECTION TO UPPER COURTYARD
- ③ EAST LOBBY CONNECTION TO LOWER COURTYARD
- ④ SOUTH WEST CONNECTION TO LOWER COURTYARD
- ⑤ WEST LOBBY CONNECTION TO UPPER COURTYARD



1025 THOMAS JEFFERSON ST

ALDUWALIYA ASSET MANAGEMENT

1025 THOMAS JEFFERSON WASHINGTON, DC 20007

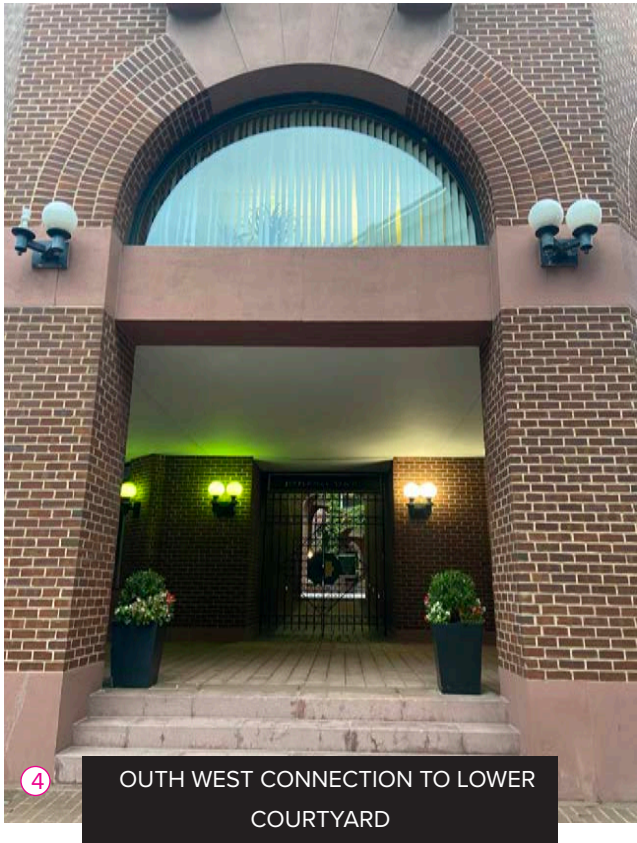
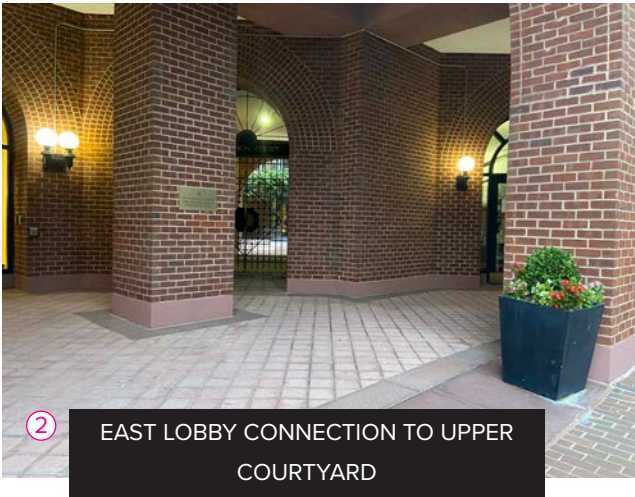
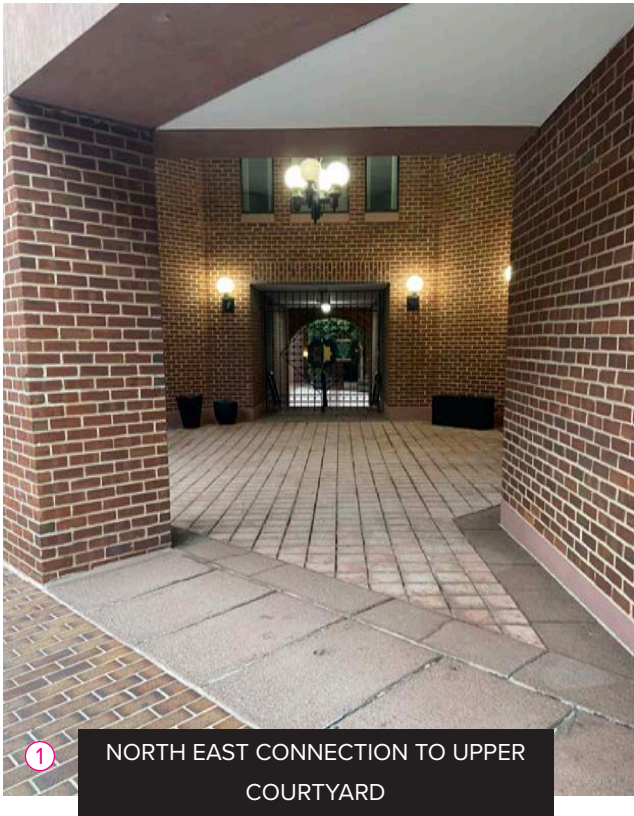
**hickok cole**

11/21/22 D7002



# 1025 THOMAS JEFFERSON

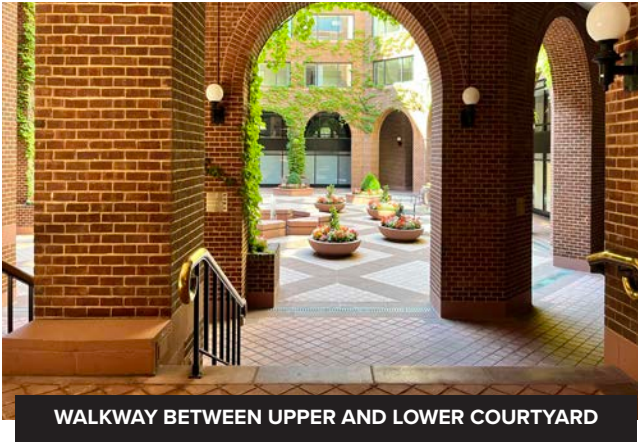
## EXISTING CONNECTIONS TO COURTYARDS



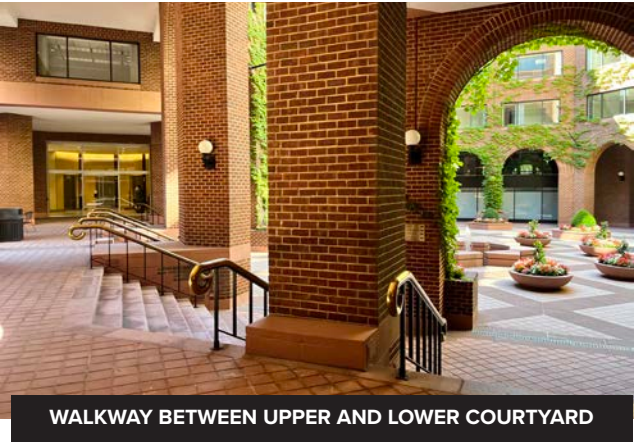


# 1025 THOMAS JEFFERSON

## EXISTING COURTYARDS CONDITIONS



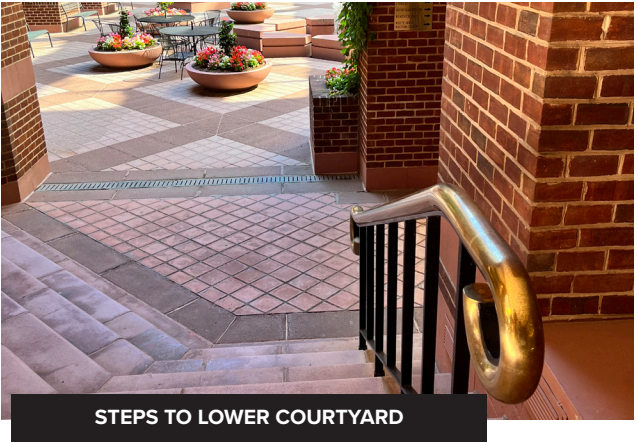
WALKWAY BETWEEN UPPER AND LOWER COURTYARD



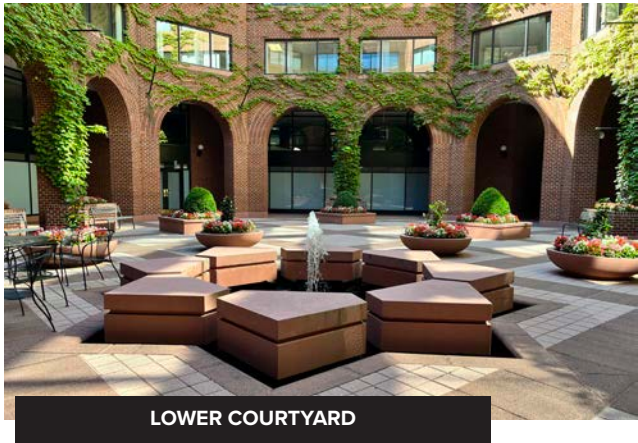
WALKWAY BETWEEN UPPER AND LOWER COURTYARD



WALKWAY BETWEEN UPPER AND LOWER COURTYARD



STEPS TO LOWER COURTYARD



LOWER COURTYARD



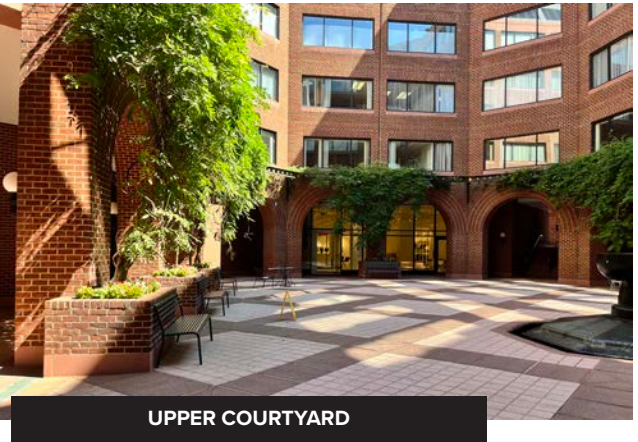
LOWER COURTYARD



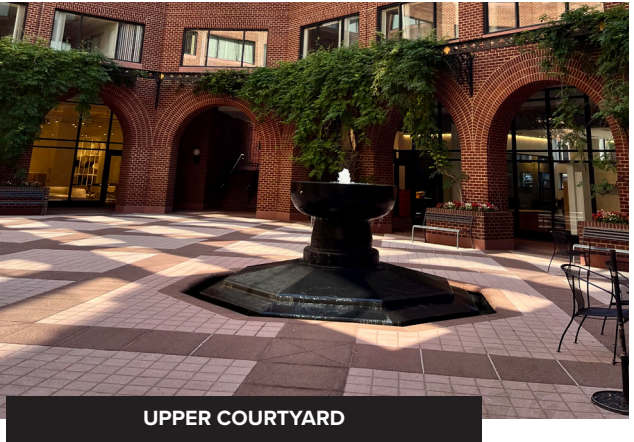
LOWER COURTYARD



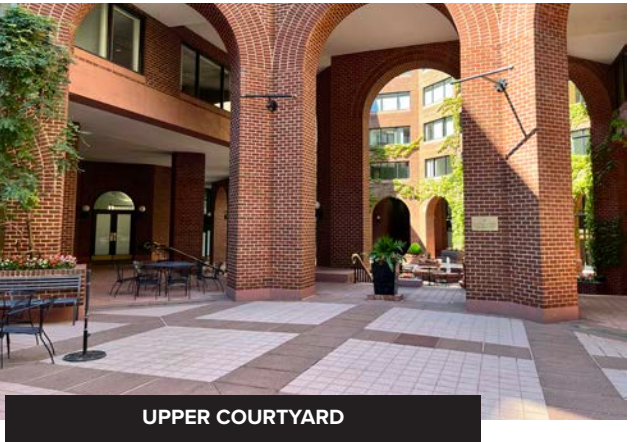
LOWER COURTYARD



UPPER COURTYARD



UPPER COURTYARD



UPPER COURTYARD



UPPER COURTYARD

1025 THOMAS JEFFERSON ST

ALDUWALIYA ASSET MANAGEMENT

1025 THOMAS JEFFERSON WASHINGTON, DC 20007

**hickok cole**

11/21/22

D7004