

Smithmeyer & Pelz,
1887

BUILDERS' BULLETIN.

PROPOSED "MEMORIAL BRIDGE," IN HONOR
OF
GENERAL . U.S. GRANT.
FROM WASHINGTON D.C. TO ARLINGTON, Va.



CAPT. T. W. SYMONS
ENGINEER

MATERIALS—GRANITE AND STEEL—
APPROXIMATELY 20 EMBARRASMENT
CARLOADS—40 FEET WIDE
AND 10 FEET HIGH, 8 FEET WIDE

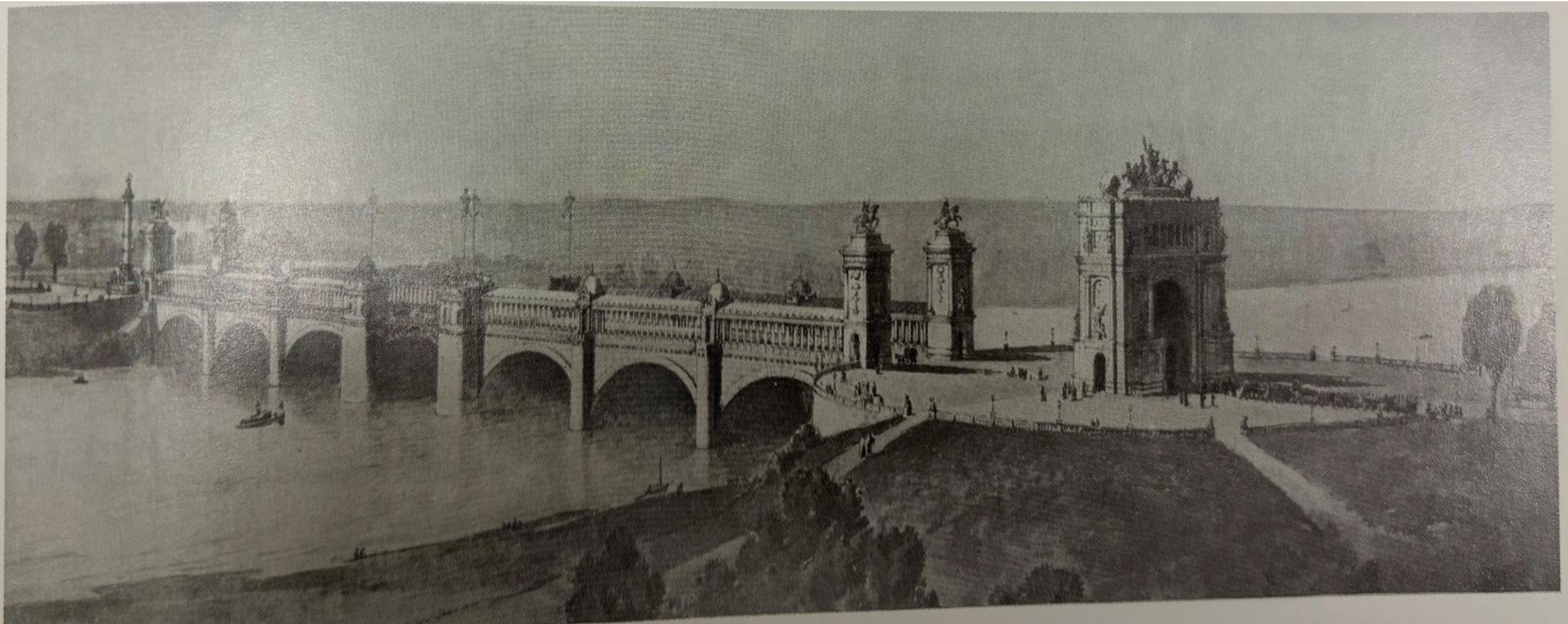
PROFILE SECTION.



SMITHMEYER & PELZ.
ARCHITECTS.

TOTAL LENGTH, 1000 FEET
CENTRAL ARCHES 200 FEET
SPAN ARCHES 200 FEET
SMALL " " " " " "

George Keller, 1900





PERSPECTIVE OF DESIGN NO. 1.

L. L. Buck, Engineer.

Carrère & Hastings, } Architects.
Walker & Morris, }

-MEMORIAL BRIDGE ACROSS THE POTOMAC-
-AT WASHINGTON D.C.-



DESIGN NO II

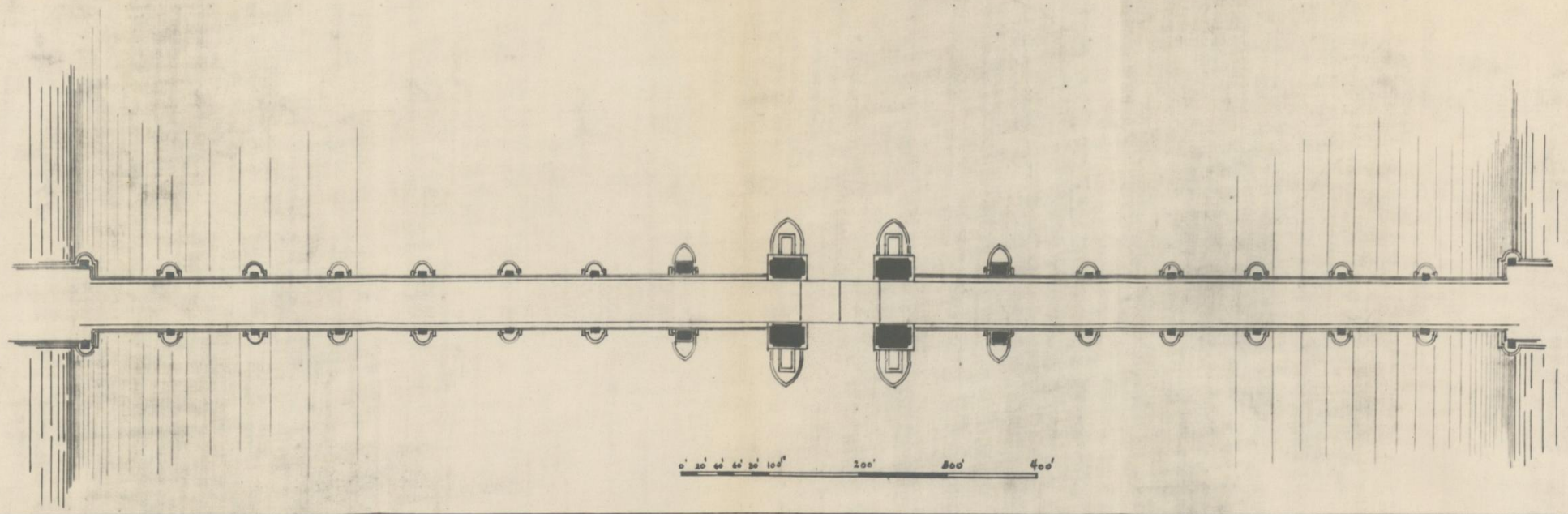
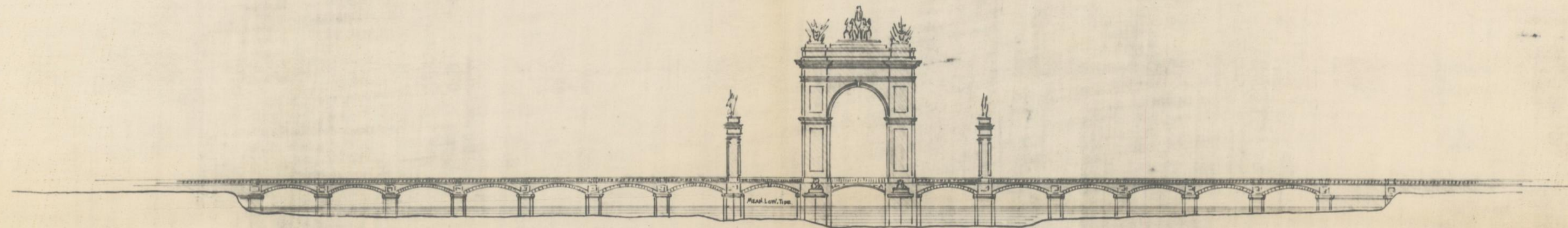
REPRODUCED BY THE ARCHITECTS, BURR & CASEY, 1900



CENTRE OF DESIGN NO. 2.



CENTRE OF DESIGN NO. 3.



0' 20' 40' 60' 80' 100' 200' 300' 400'

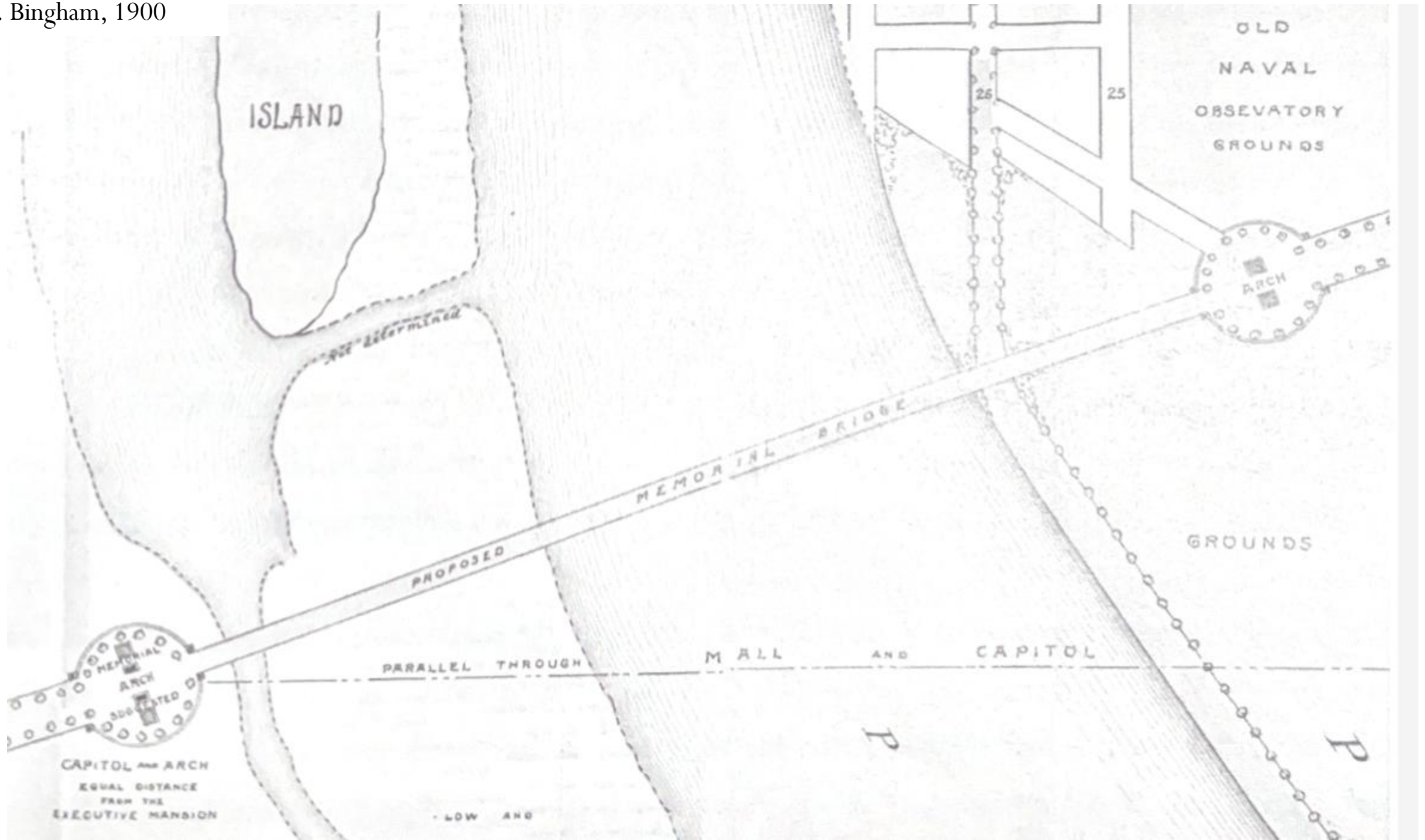
Burr & Casey, 1900



EDW. PEARCE CASEY
ARCHITECT

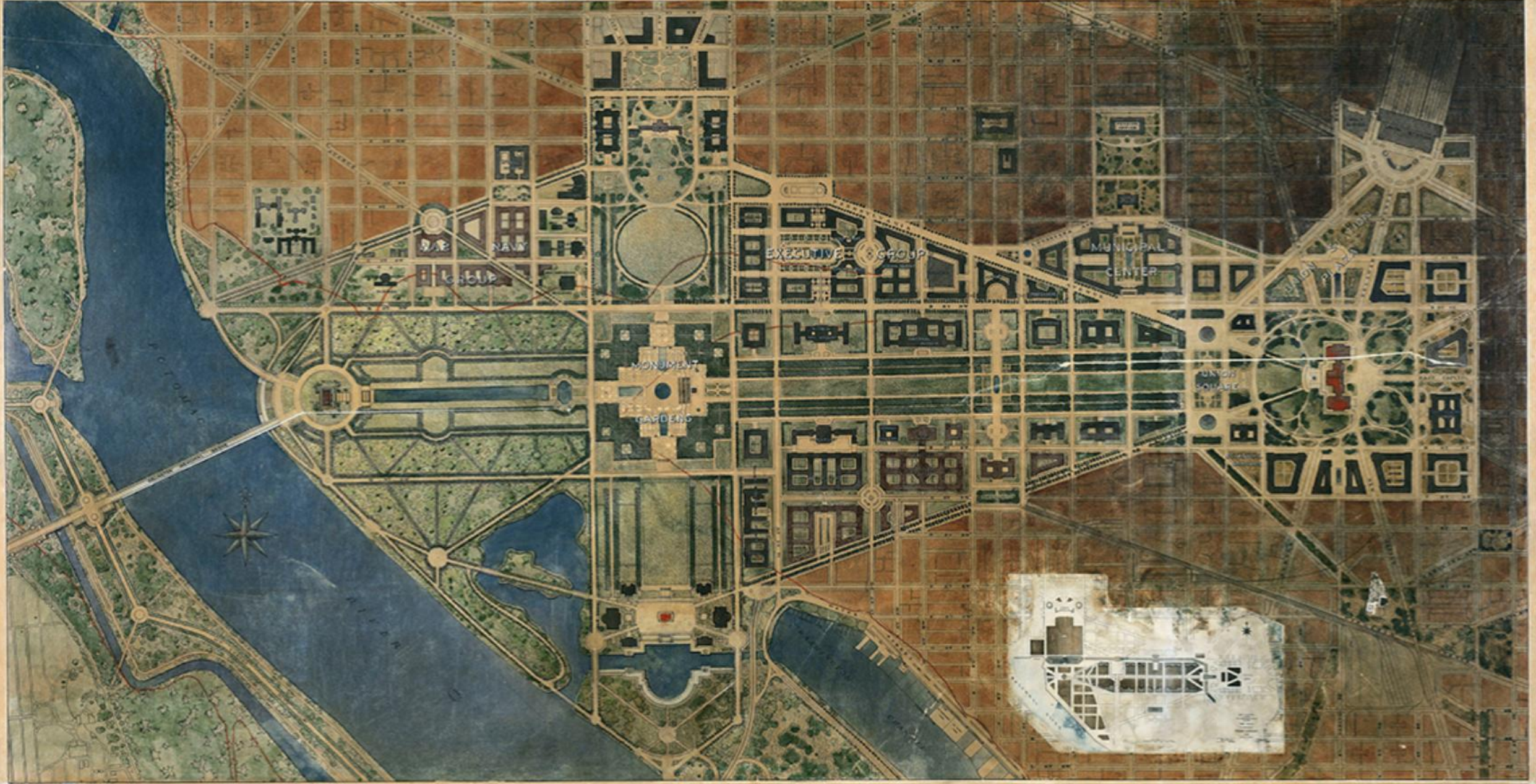
- MEMORIAL - BRIDGE - ACROSS - THE - POTOMAC -
- SELECTED BY BOARD OF ENGINEERS AND ARCHITECTS -
- AND APPROVED BY SECRETARY OF WAR -

- WILLIAM H. BURR -
- CIVIL ENGINEER -



WASHINGTON : 1928 - THE MALL

DEVELOPMENT STUDIES - BY THE NATIONAL CAPITAL PARK AND PLANNING COMMISSION



RED LINE SHOWS ORIGINAL SHORE LINE

BUILDINGS SHOWN IN BROWN TENTATIVE PUBLIC BUILDINGS GROUP

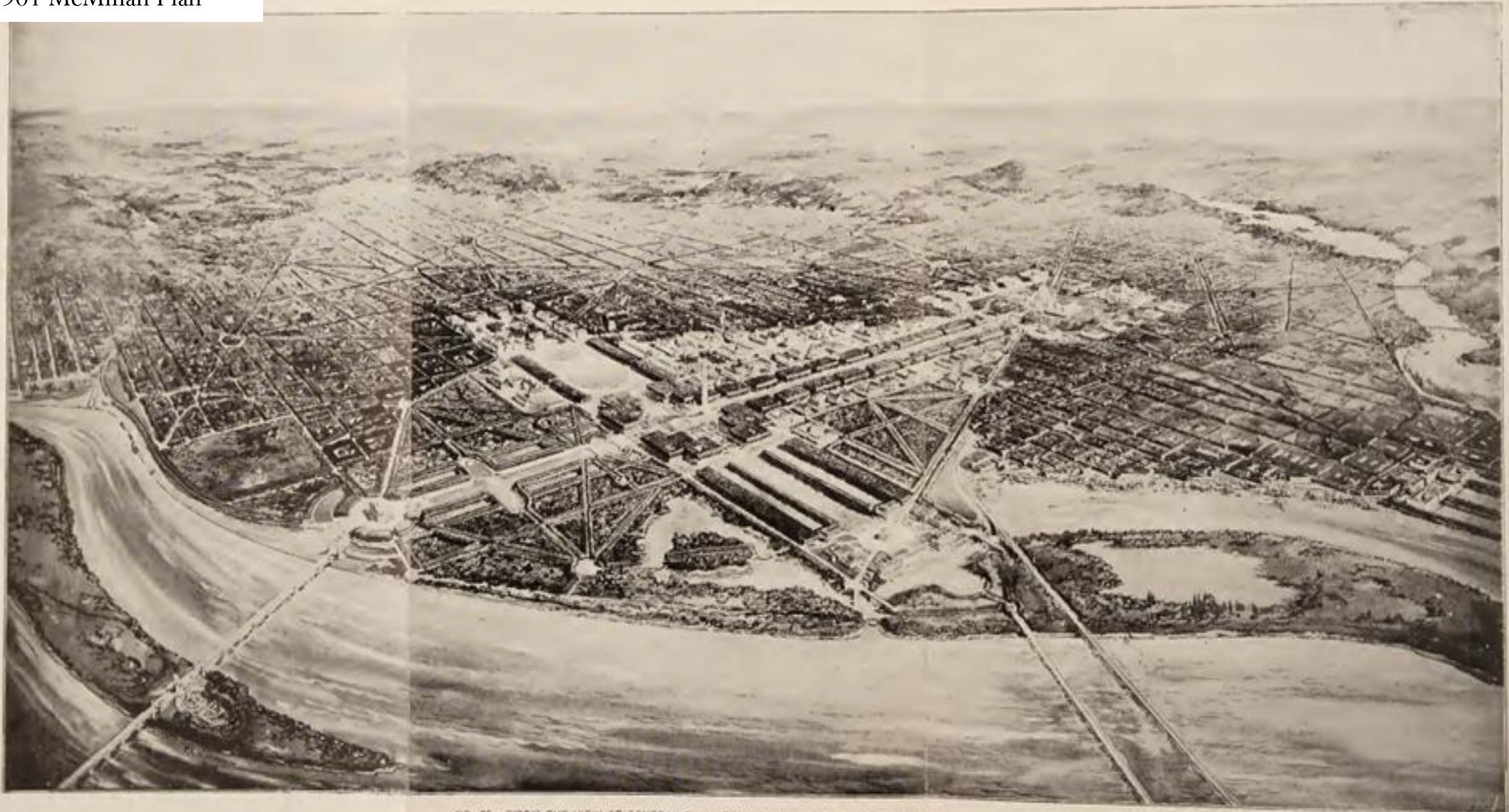
MONUMENT GARDENS AND AREA SOUTH SHOWN AS PLANNED BY THE McMICHAEL COMMISSION OF 1904 - NOW SUBJECT TO CHANGE

BUILDINGS SHOWN IN BROWN TENTATIVE PUBLIC BUILDINGS GROUP

RED LINE SHOWS ORIGINAL SHORE LINE

BUILDINGS SHOWN IN GREY EXISTING AND APPROVED PROJECTS

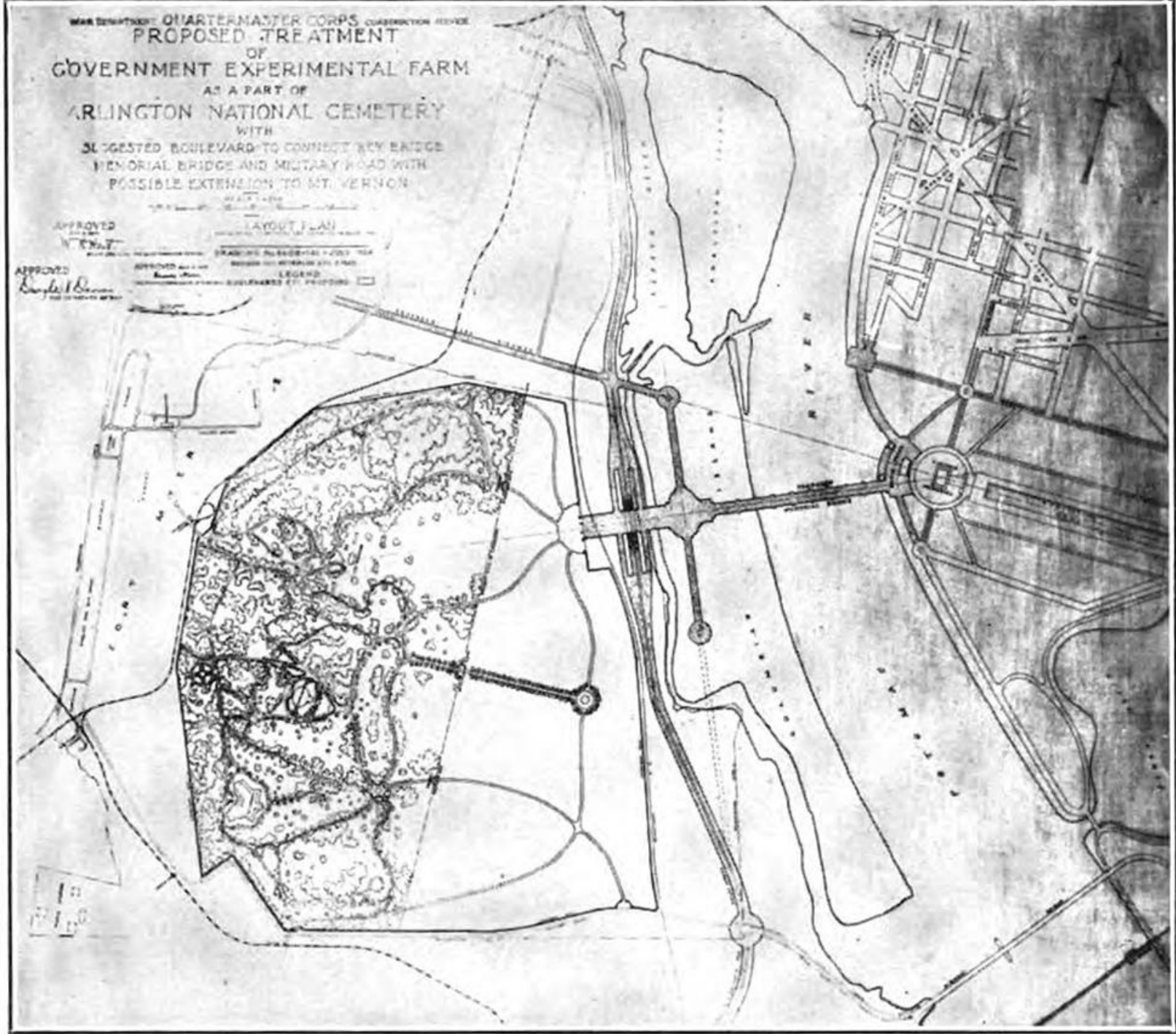
100-10000



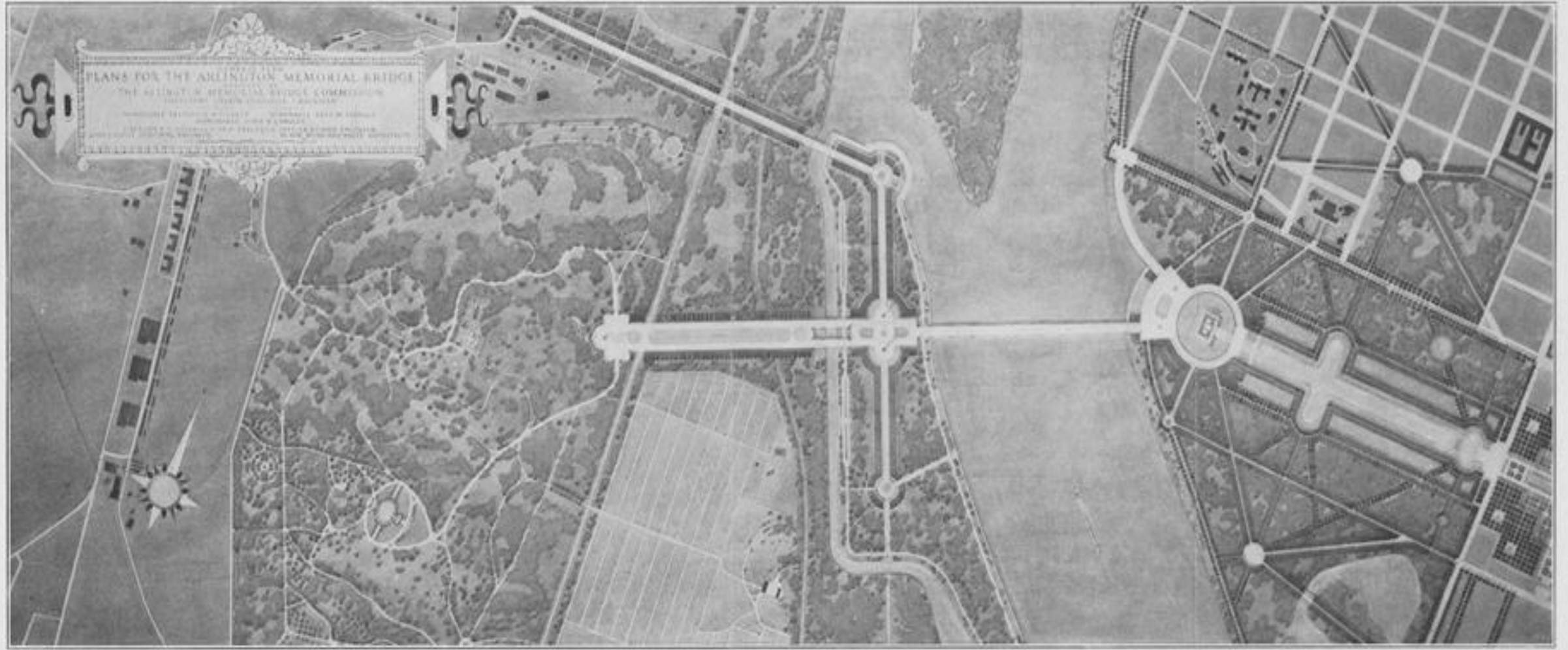
NO. 25.—BIRD'S-EYE VIEW OF GENERAL PLAN, FROM POINT TAKEN 4,000 FEET ABOVE ARLINGTON.

WAR DEPARTMENT QUARTERMASTER CORPS CONSTRUCTION DIVISION
 PROPOSED TREATMENT
 OF
 GOVERNMENT EXPERIMENTAL FARM
 AS A PART OF
 ARLINGTON NATIONAL CEMETERY
 WITH
 SUGGESTED BOULEVARD TO CONNECT KEY BRIDGE
 MEMORIAL BRIDGE AND MILITARY ROAD WITH
 POSSIBLE EXTENSION TO MT. VERNON

APPROVED
W. H. ...
 LAYOUT PLAN
 GRADED 25 FEBRUARY 1922
 DRAWN BY ...
 LEGEND

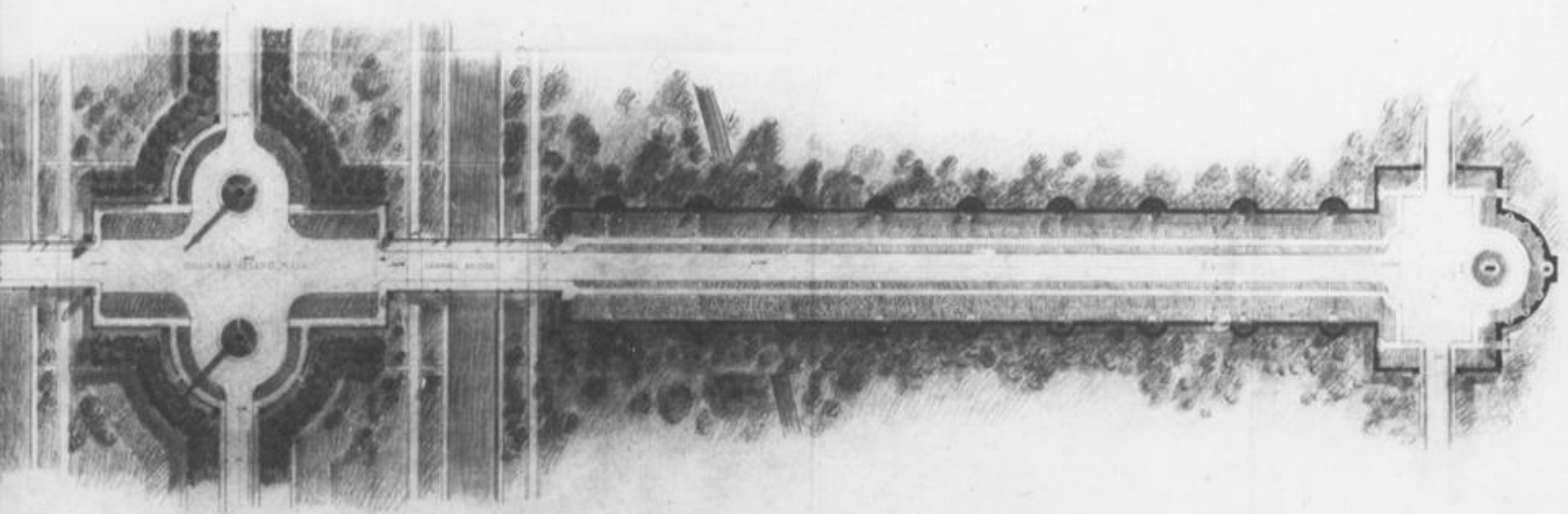


McKim, Mead & White,
1920s



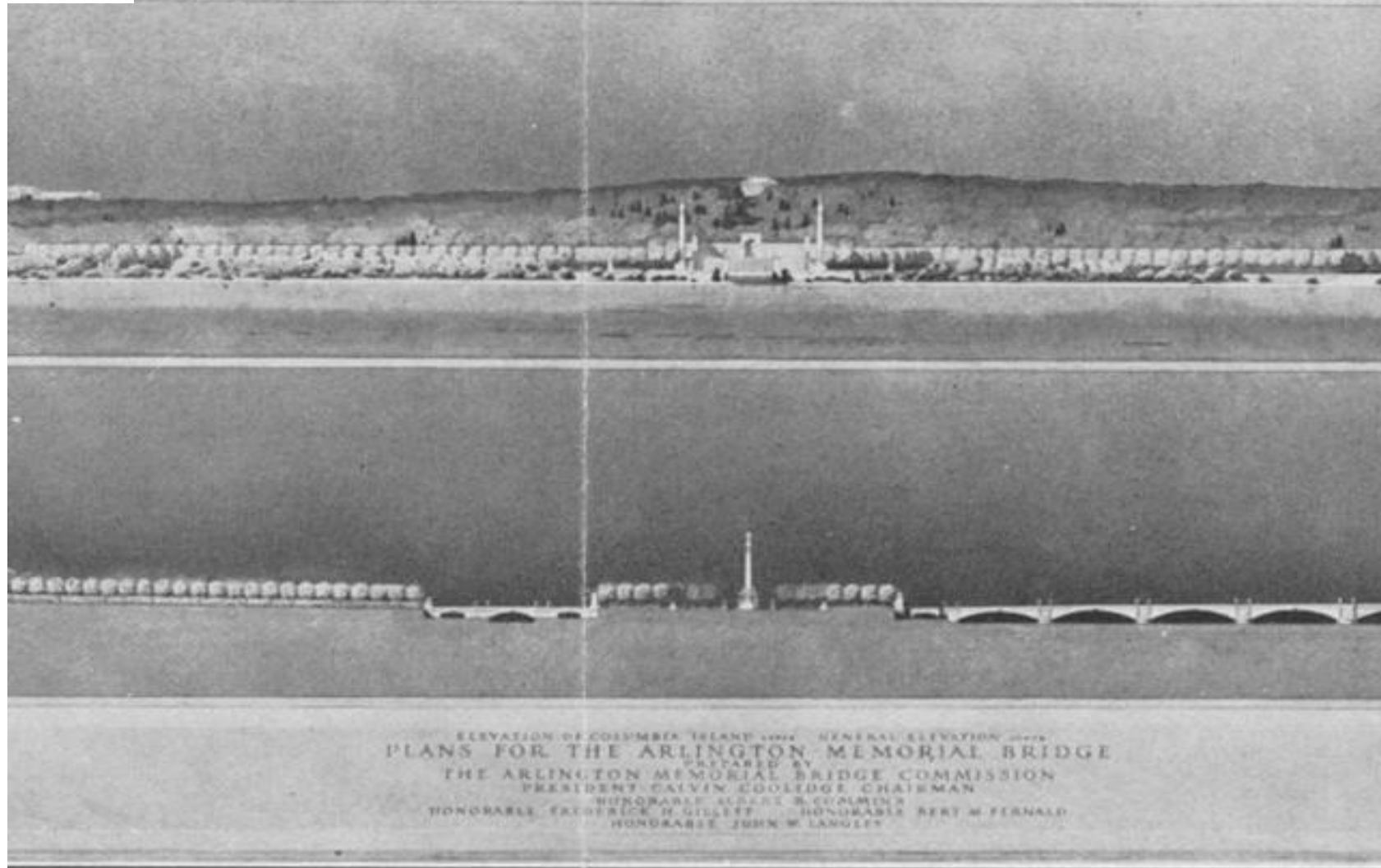
GENERAL PLAN

McKim, Mead & White,
1923



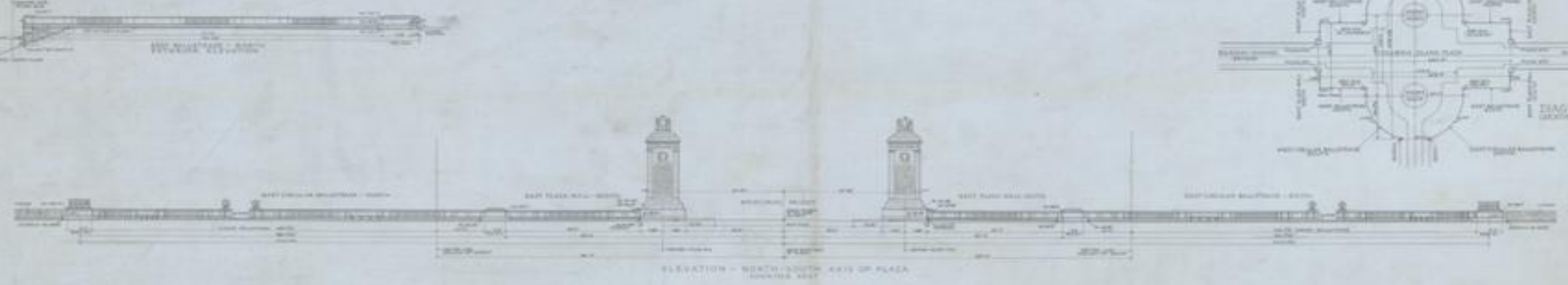
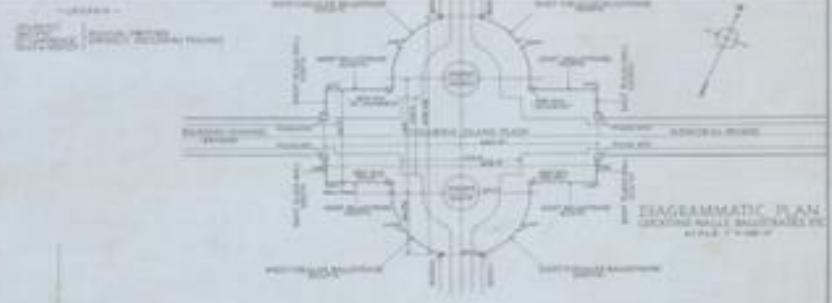
ARLINGTON
MEMORIAL BRIDGE
MCKIM, MEAD & WHITE, ARCHITECTS
110 MADISON AVENUE, NEW YORK, N. Y.
GENERAL TREATMENT OF CEMENTARY
FOR HIGHWAY DESIGN
SCALE: 1/4" = 1'-0"
DATE: 1923

Arlington Memorial Bridge
Commission, 1923



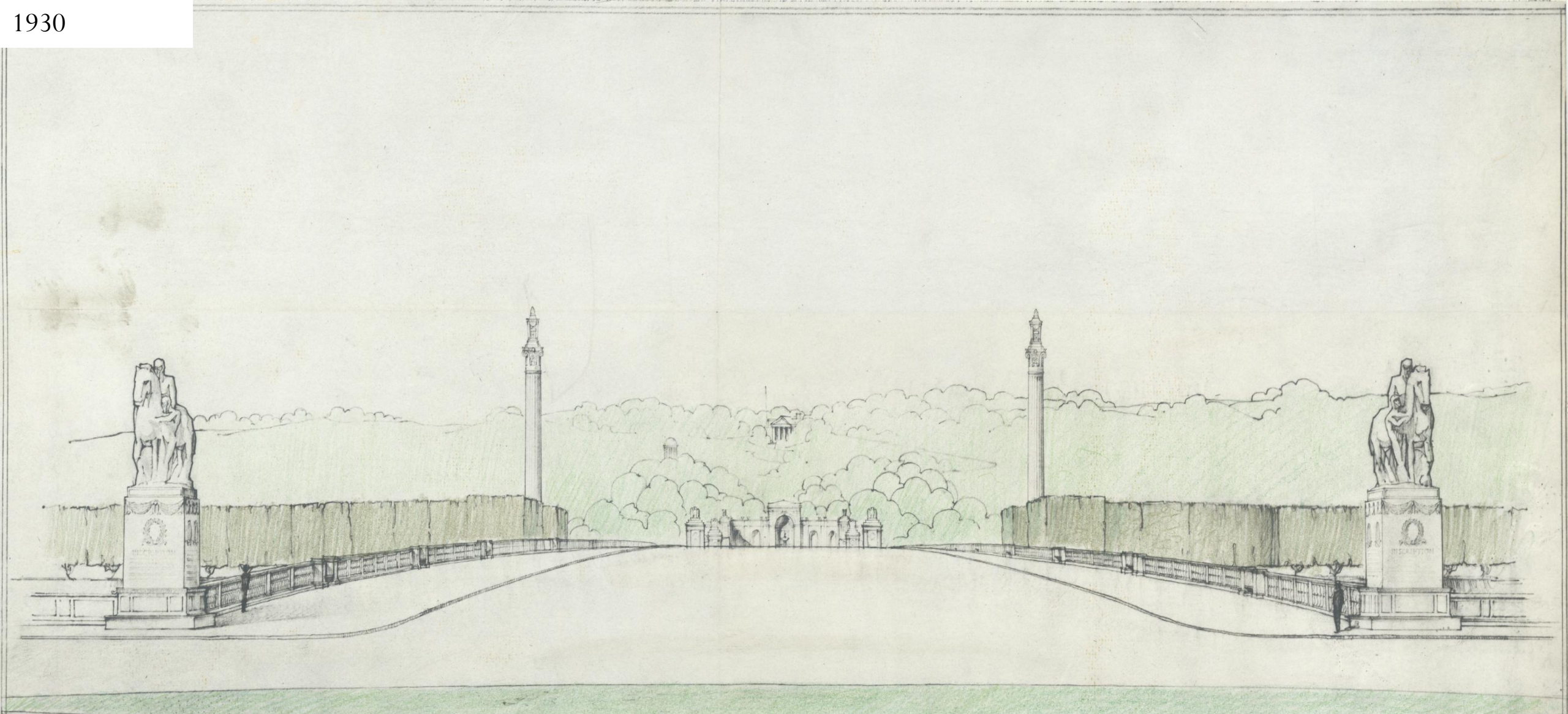
ELEVATION OF ARLINGTON HEIGHTS (UPPER)
Profile of bridge from Lincoln Memorial to Lee Mansion (lower)

1930



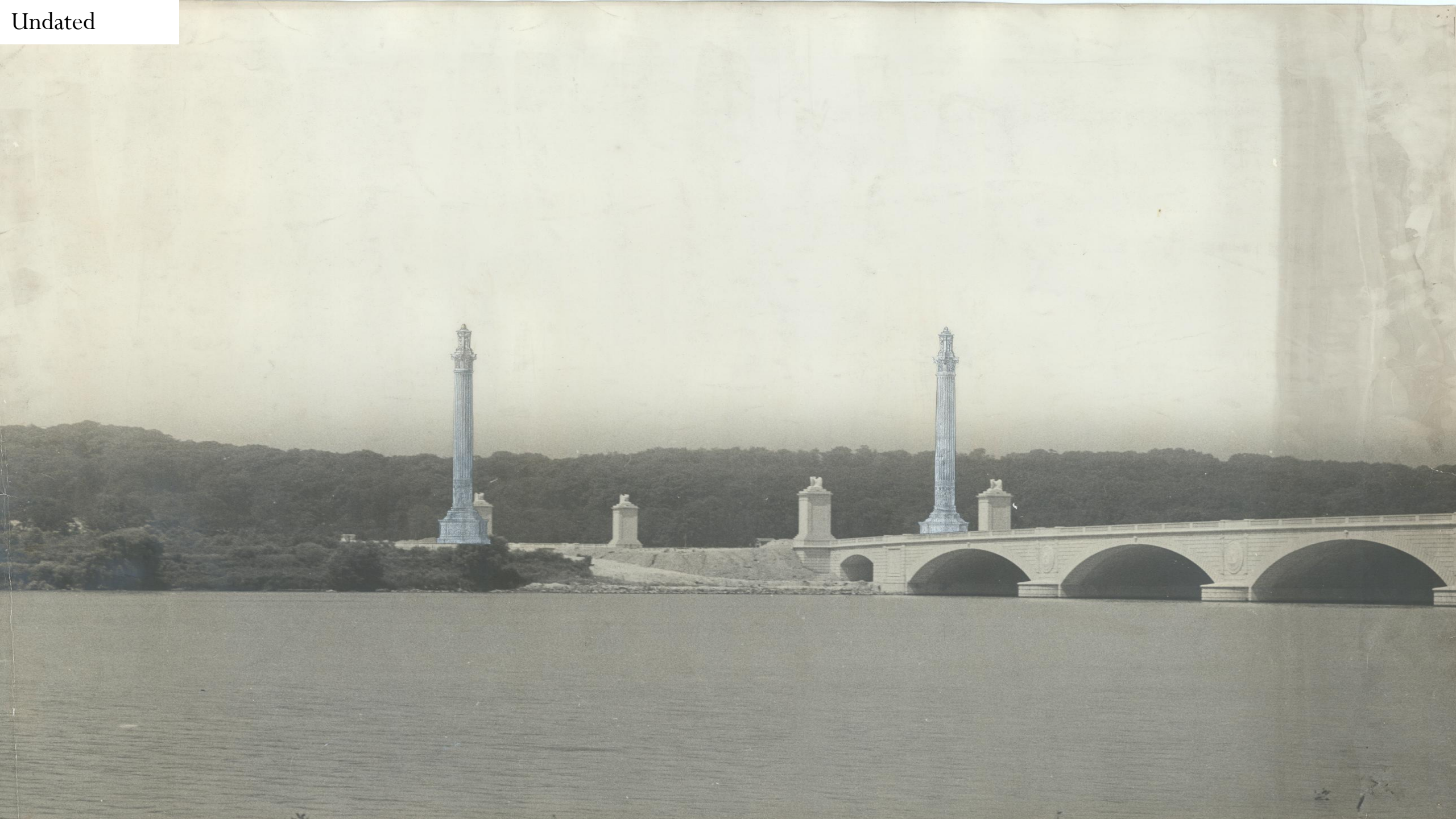
ARLINGTON MEMORIAL BRIDGE
COMMISSION
MAYOR WOODS AND ARCHITECTS
COLUMBIA ISLAND PLAZA
GENERAL ELEVATIONS
GRANITE DRAWINGS
SCALE 1/8" = 1'-0"
DATE 1930
DRAWN BY
CHECKED BY
APPROVED BY
SOS-7

1930



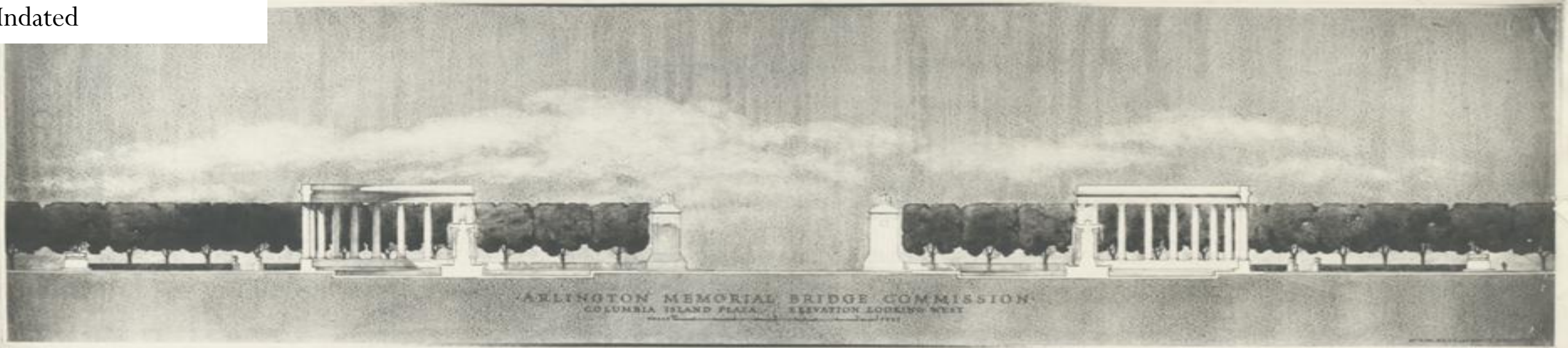
PERSPECTIVE VIEW FROM LINCOLN CIRCLE (EL+31'0")
ON AXIS OF BRIDGE

Undated



McKim, Mead & White,
Undated

P. S. [unclear]



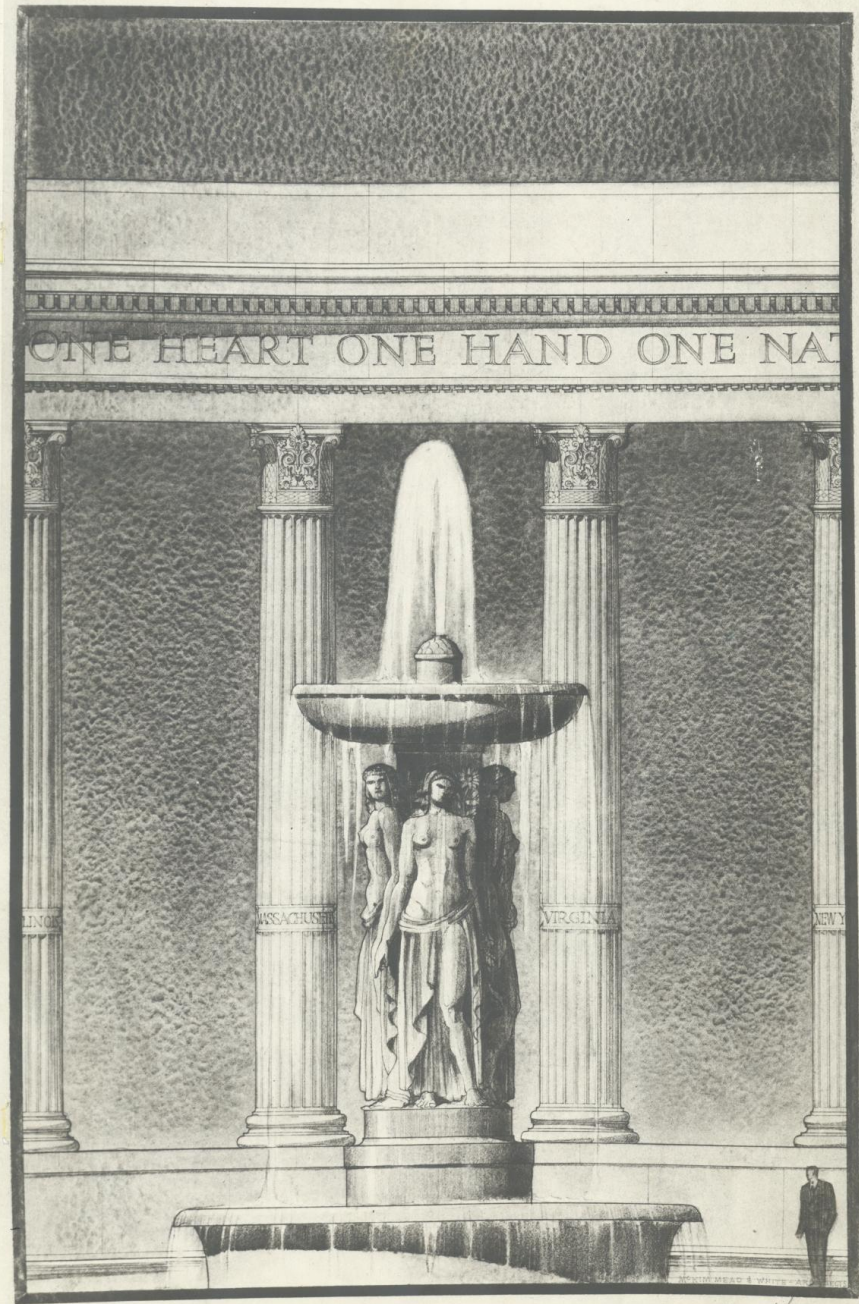
NATIONAL CAPITAL PARKS
ARCHIVES COPY

FILE COPY

NAT. CAP. P.S.
ARCHIVES COPY 315-16

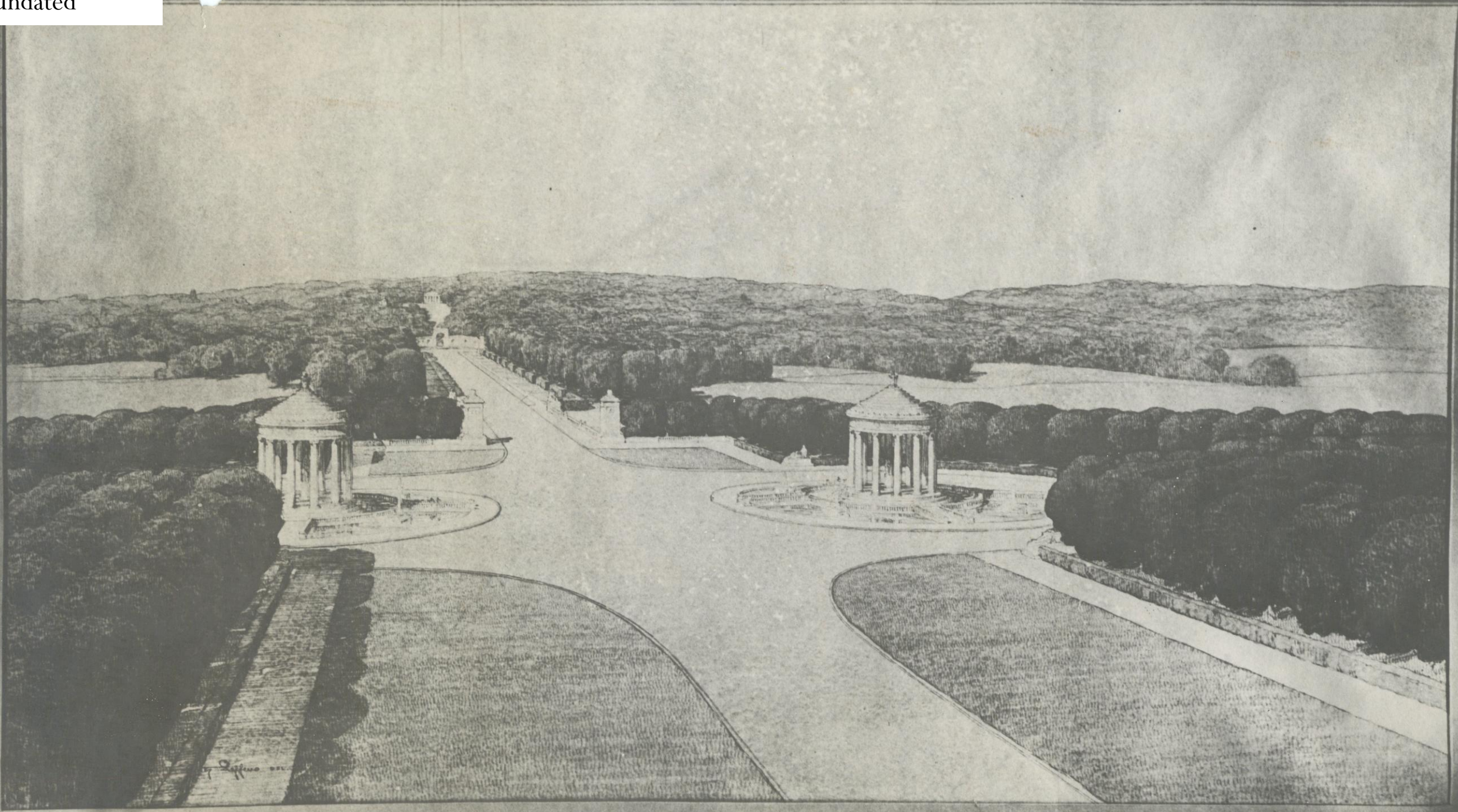
McKim, Mead &
White, Undated

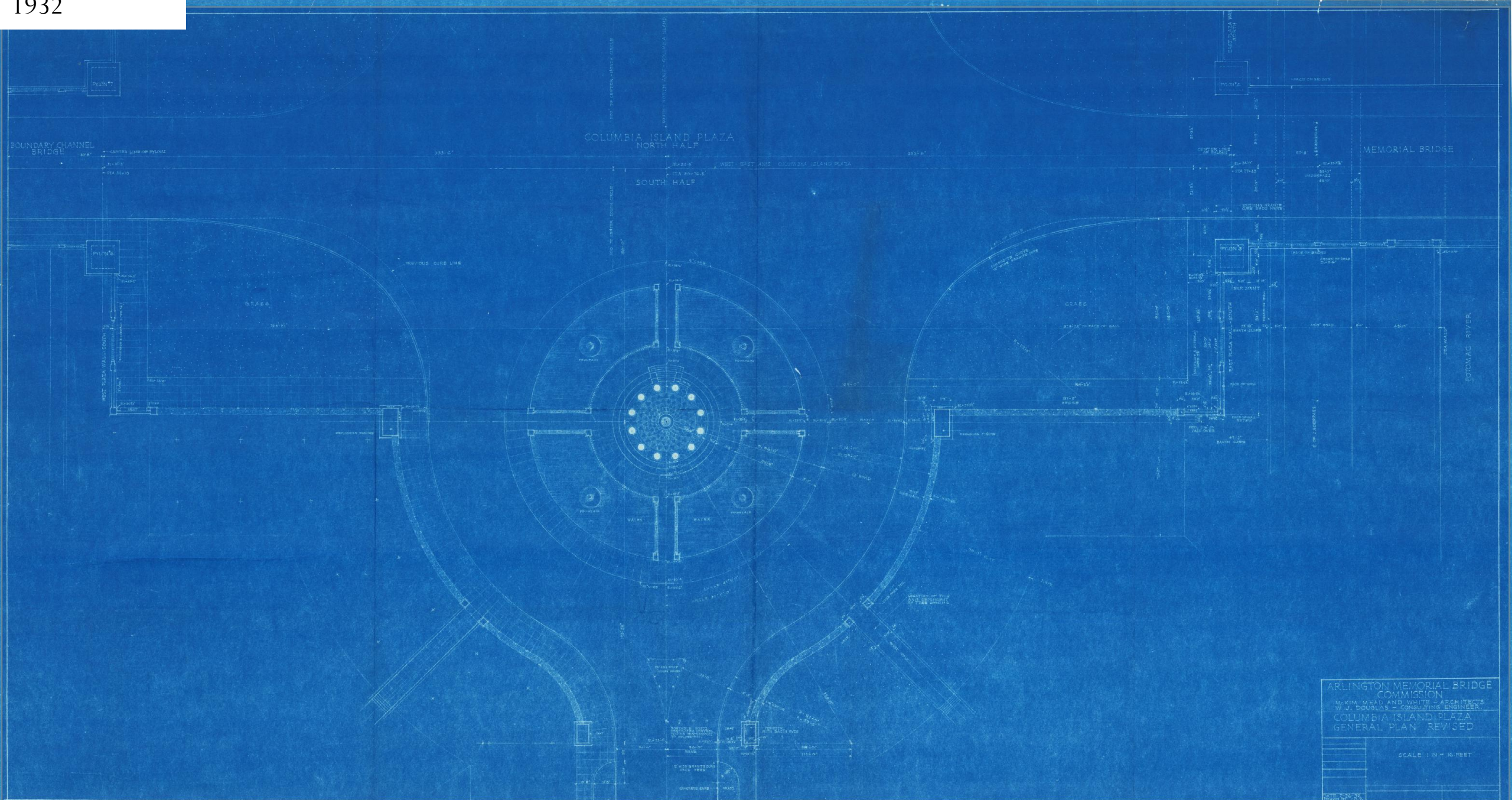
P. J. Keane



NAT. CAP. PKIS. COLUMBIA ISLAND. NATIONAL CAPITAL PARKS ARCHIVES COPY
4" DETAIL OF FOUNTAIN 345-16
ARCHIVES COPY

Undated





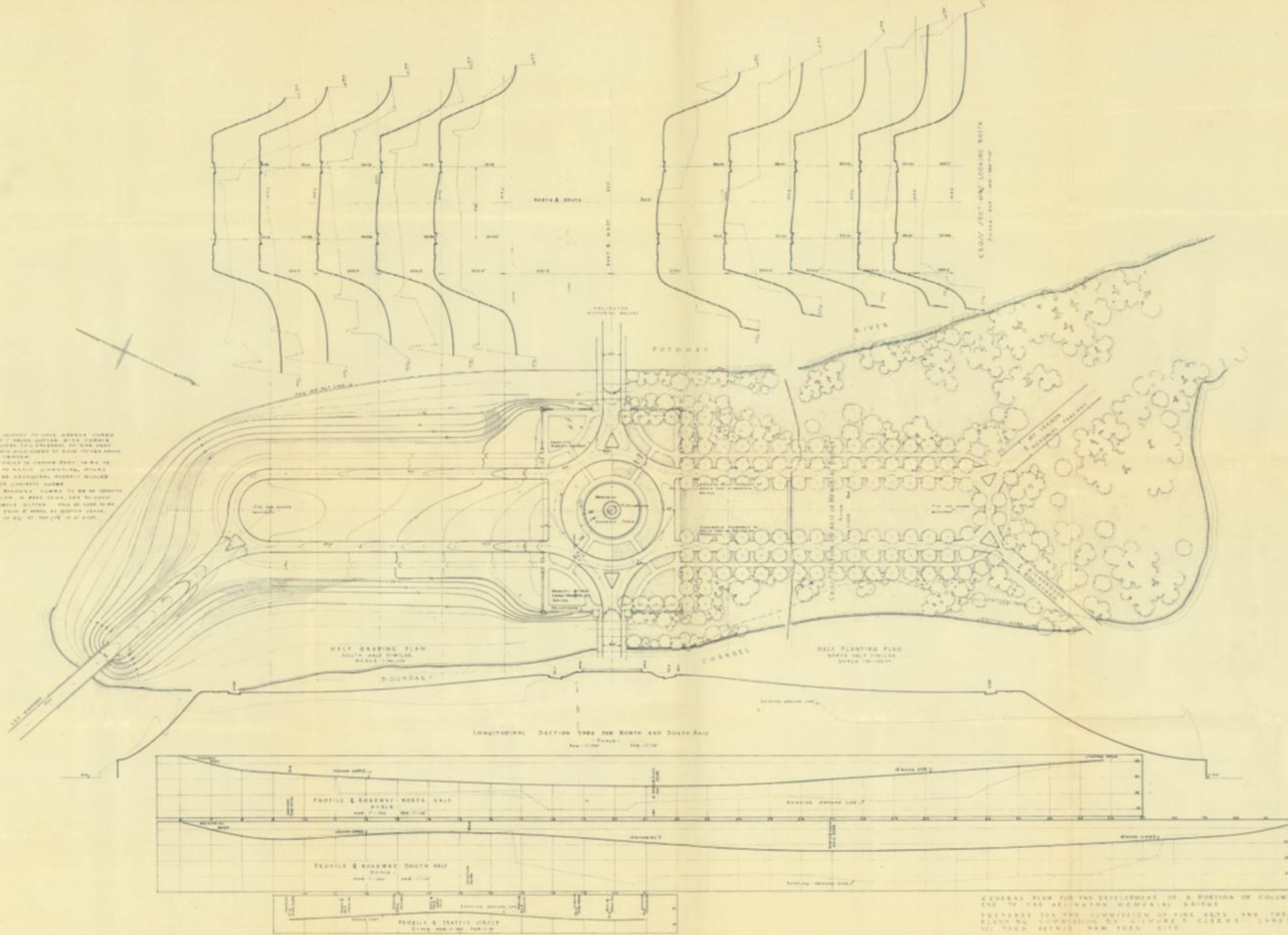
COLUMBIA ISLAND PLAZA
NORTH HALF

SOUTH HALF

ARLINGTON MEMORIAL BRIDGE
COMMISSION
W. H. HARRIS AND WHITE - ARCHITECTS
W. J. DOUGLAS - CONSULTING ENGINEER
COLUMBIA ISLAND PLAZA
GENERAL PLAN, REVISED

SCALE 1/4" = 10' FEET

As submitted to City of A. 2/26/32



All bridges to have concrete piers
 & steel deck - bridge girders with concrete
 deck - concrete and steel - to have steel
 deck and concrete
 All bridges to have steel deck in case of
 concrete or steel - concrete, steel
 deck - steel - concrete - steel
 All bridges - concrete or steel - concrete
 - steel - steel - steel - steel - steel - steel
 - steel - steel - steel - steel - steel - steel
 - steel - steel - steel - steel - steel - steel

SCALE - 1/4" = 10'
 1/4" = 10'

GENERAL PLAN FOR THE DEVELOPMENT OF A PORTION OF COLUMBIA ISLAND AT THE EAST
 END OF THE ANACOSTIA MEMORIAL BRIDGE
 PREPARED FOR THE COMMISSION OF FINE ARTS AND THE NATIONAL CAPITAL PARKS
 PLANNING COMMISSION BY WILLIAM A. CLARK'S LANDSCAPE ARCHITECT
 401 F STREET, N.W. WASHINGTON, D.C.