



555 Pennsylvania Avenue

July 3, 2019

- Establish a greater Johns Hopkins University **identity** in the District of Columbia
- Provide a **portal** for Baltimore programs in Washington, D.C. and vice versa
- Offer **convening space** for topic experts, policymakers, academic and policy leaders
- Create a **collaborative** learning and working environment
- Provide a platform to introduce **innovative pedagogy**
- Provide long term **flexibility** to support expanded Johns Hopkins University programs
- Integrate best practices for **sustainability** and **resilience** and **operational efficiency**
- Leverage **transparency** to reinforce and create new **community**
- Increase access to natural **daylight** throughout the entire building
- **Organize and simplify** to create circulation patterns ideal for higher education use
- Promote **health and wellness** throughout
- **Enliven Pennsylvania Avenue** and the surrounding neighborhood

Project Goals

While in the early stages, JHU and the SmithGroup/Ennead team is working on a design that refreshes 555 Pennsylvania Avenue to create a place that is distinctly associated with the Johns Hopkins University mission and at the same time respects the surrounding context.

The design under consideration proposes enhancements to the building façade that strengthen continuity with traditional Pennsylvania Avenue landmarks of note, including the use of stone reminiscent of the warm color and texture found on the National Gallery and East Building.

Prominent features include the display of classrooms, a library, and student collaboration zones fronting Pennsylvania Avenue, showcasing the facility's new education-driven purpose.

The stone tablet displaying the First Amendment, an artifact owned by the existing occupant, will be removed and replaced with glass to allow more natural daylight into the building.

The street level along Pennsylvania Avenue will be updated to provide greater transparency and sidewalk activation, creating a fluid and inviting interface with the public. Together, the combined changes will reinforce the facility's new identity as the D.C. home for Johns Hopkins. The scale and massing of the original building design, including regulating boundary lines respectful of the historic Pennsylvania Avenue corridor, will be unchanged.

Internal revisions will include the introduction of flexible, adaptable workplace environments, active learning classrooms preferred by emerging generations of students and faculty, and the inclusion of collaborative environments that support interactions between and among various academic disciplines and the wider D.C. community. This new home for academic research and scholarly pursuit will provide a place for policymakers and global leaders to convene around the mission of Johns Hopkins.

Project Intent



Historic Location



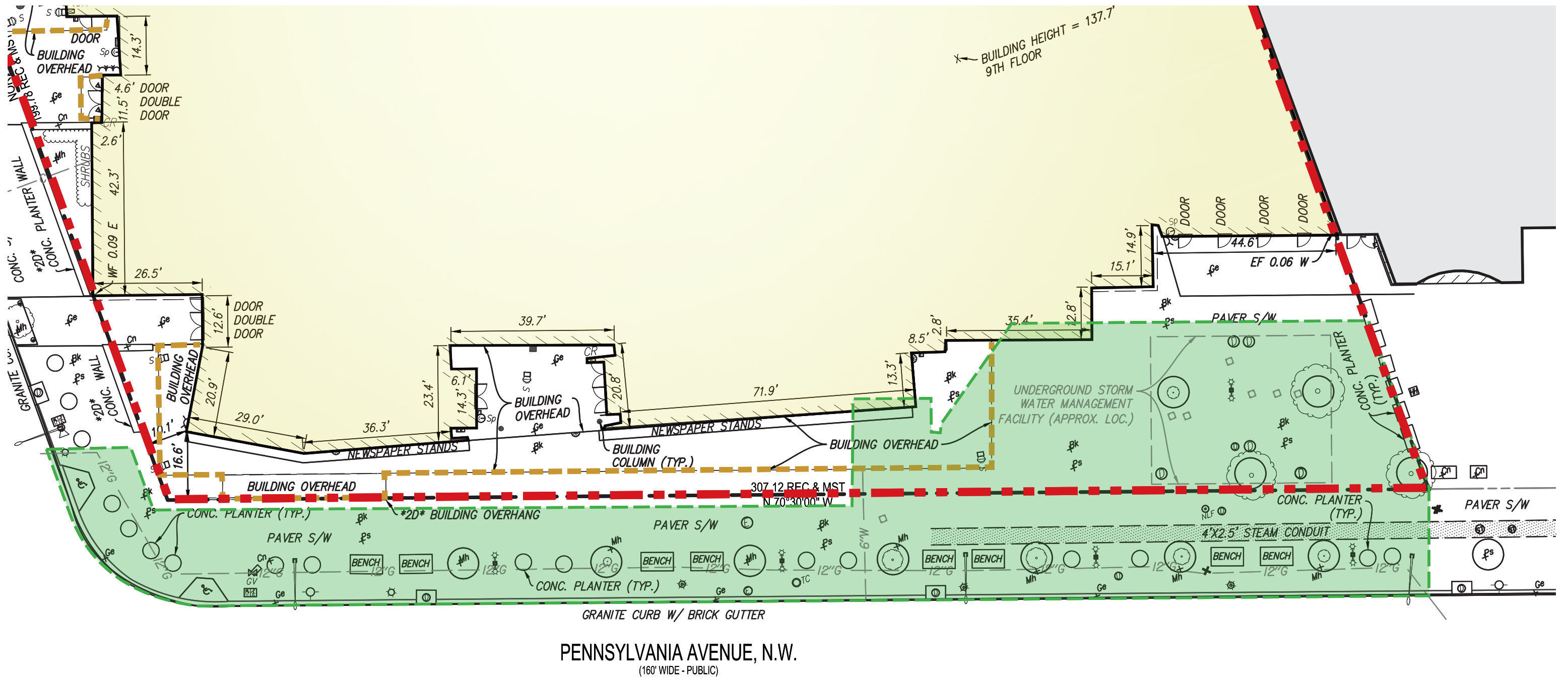
Context Today



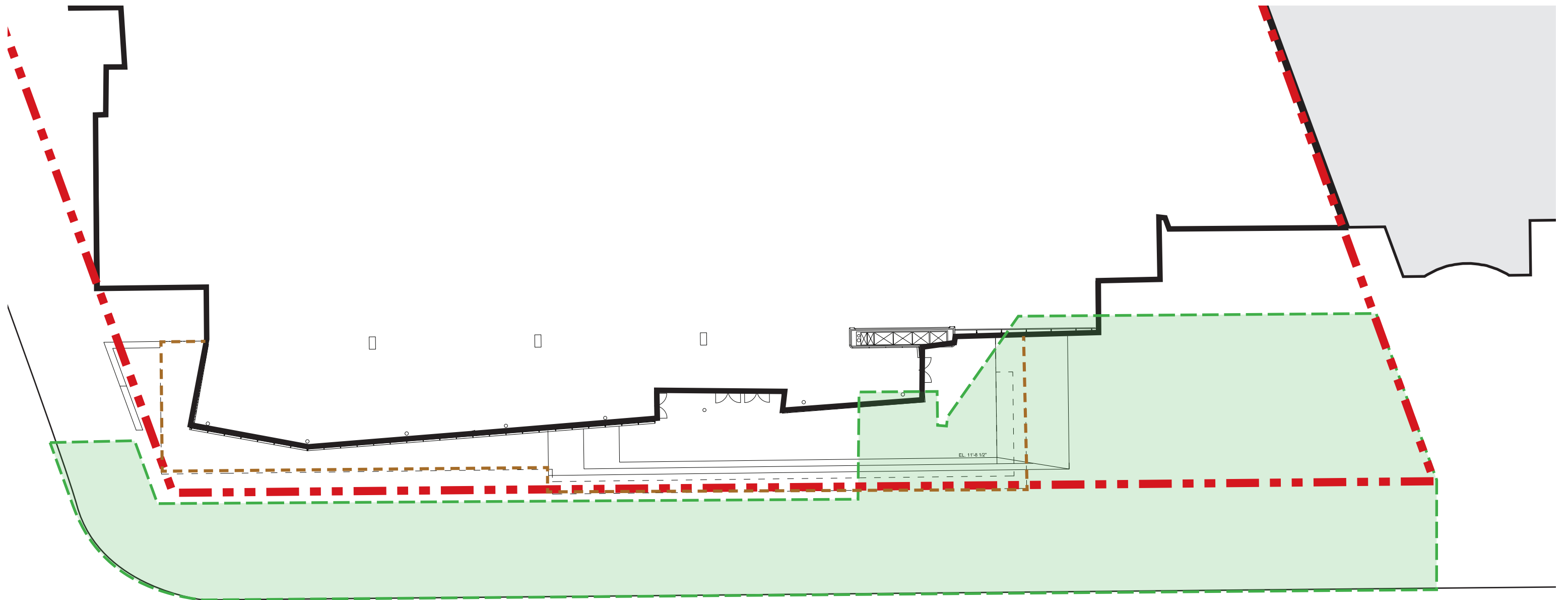
Context Today



Context Today

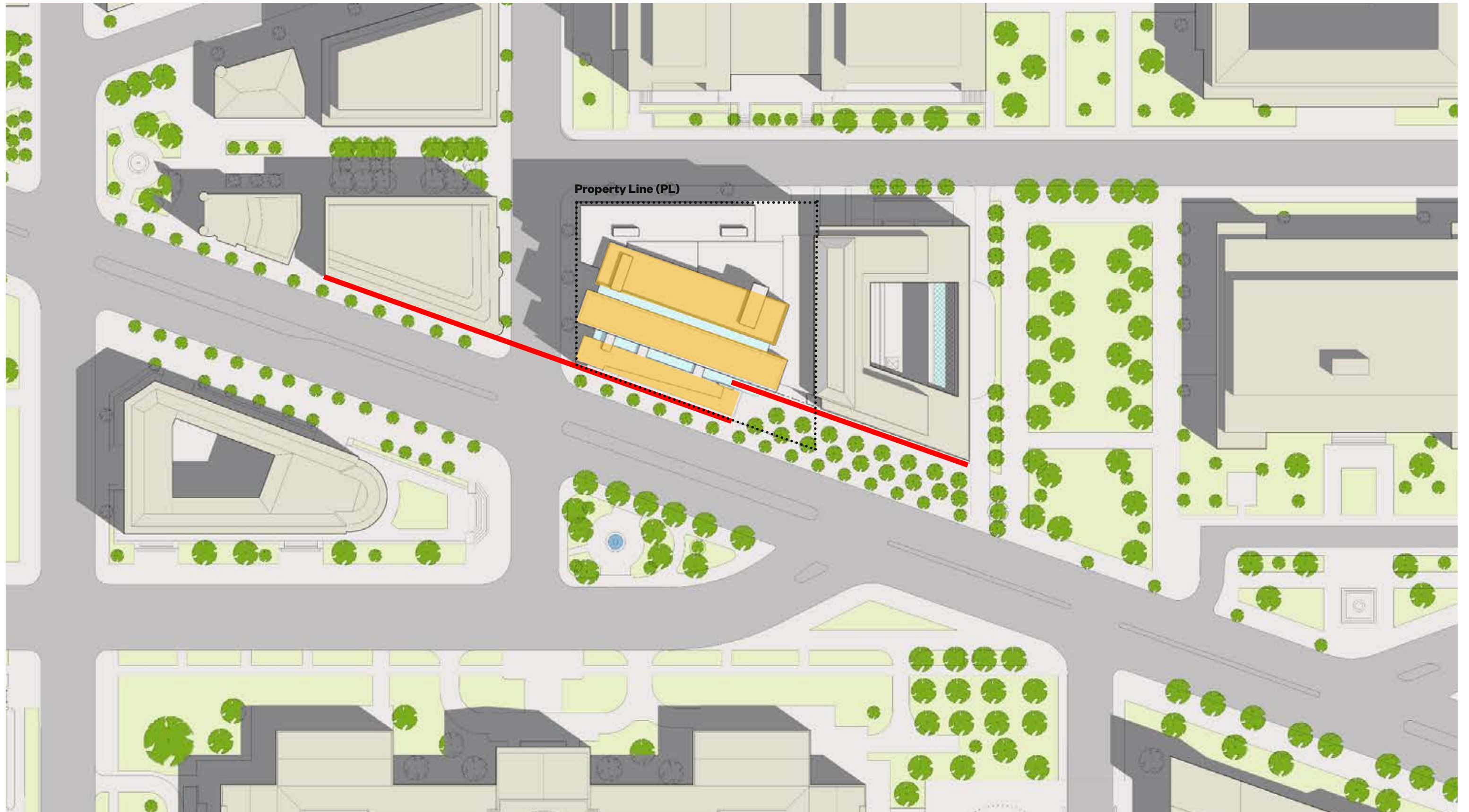


Pennsylvania Avenue Streetscape - Existing Plan Detail

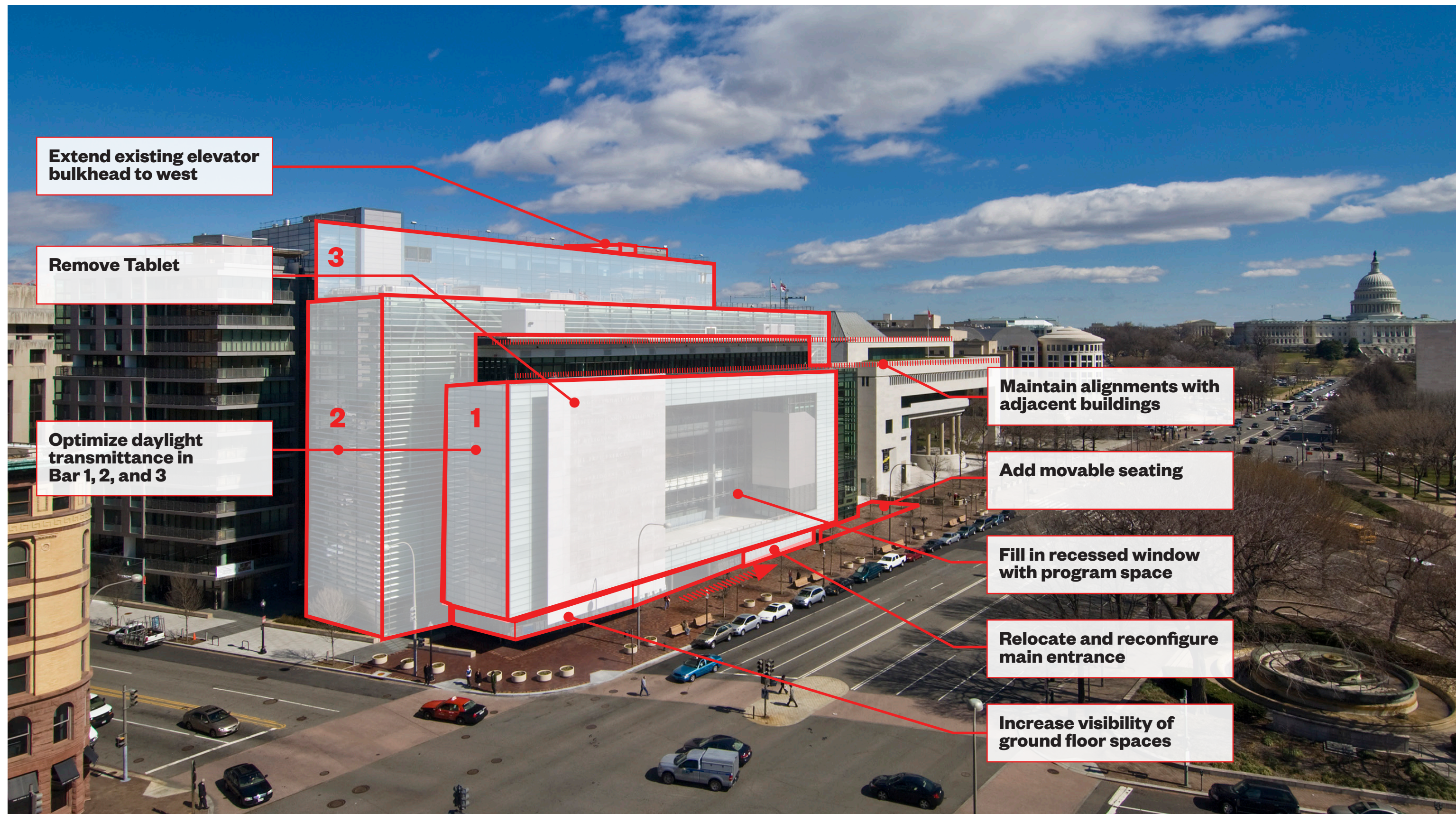


- Property Line
- National Park Service Jurisdictional Maintenance Boundary per Alta/NSPS Land Title Survey, April 2018
- Building
- Building Overhang Above

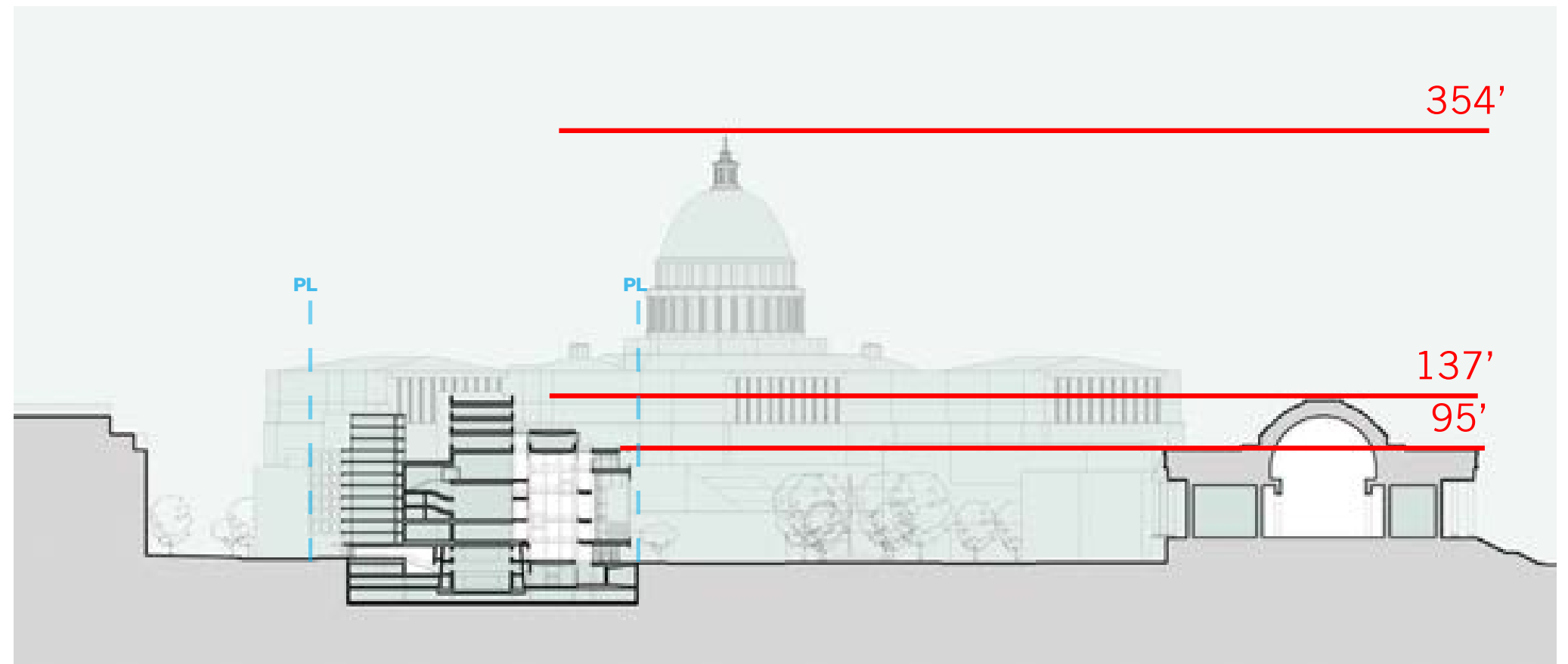
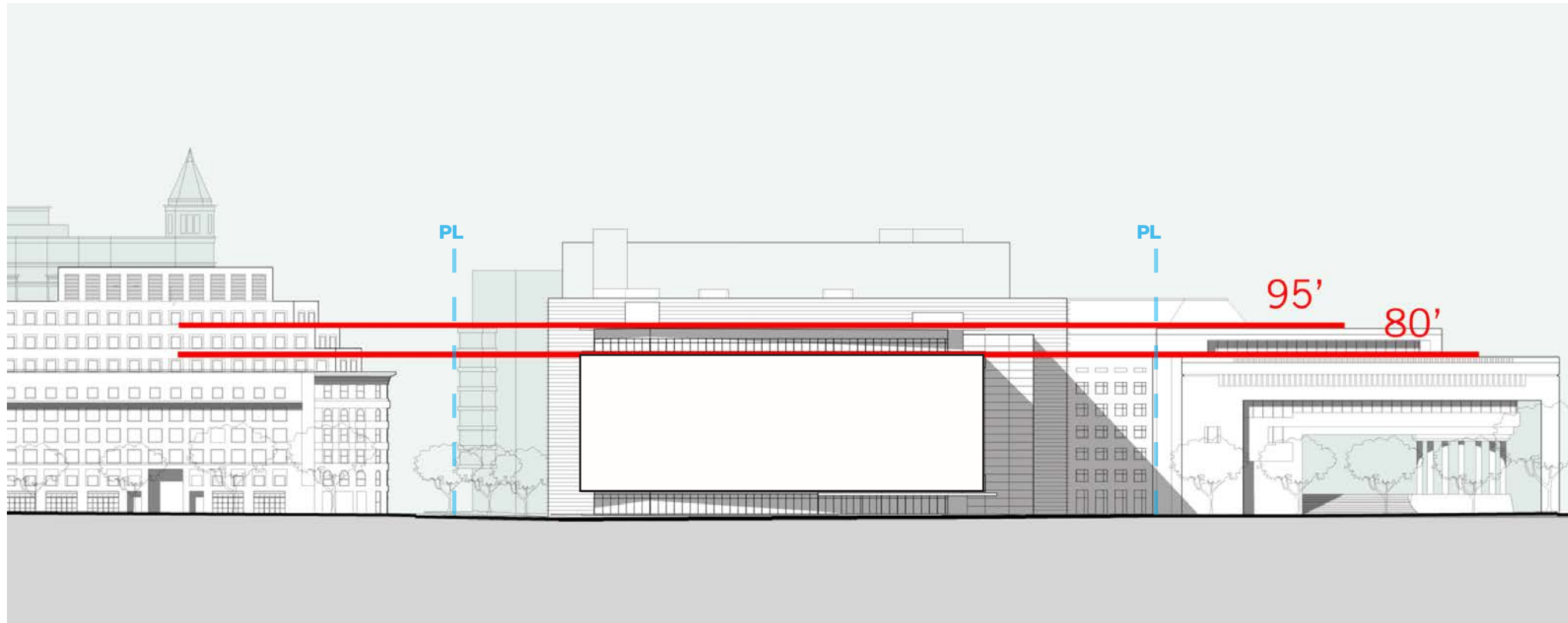
Pennsylvania Avenue Streetscape - Proposed Plan Detail



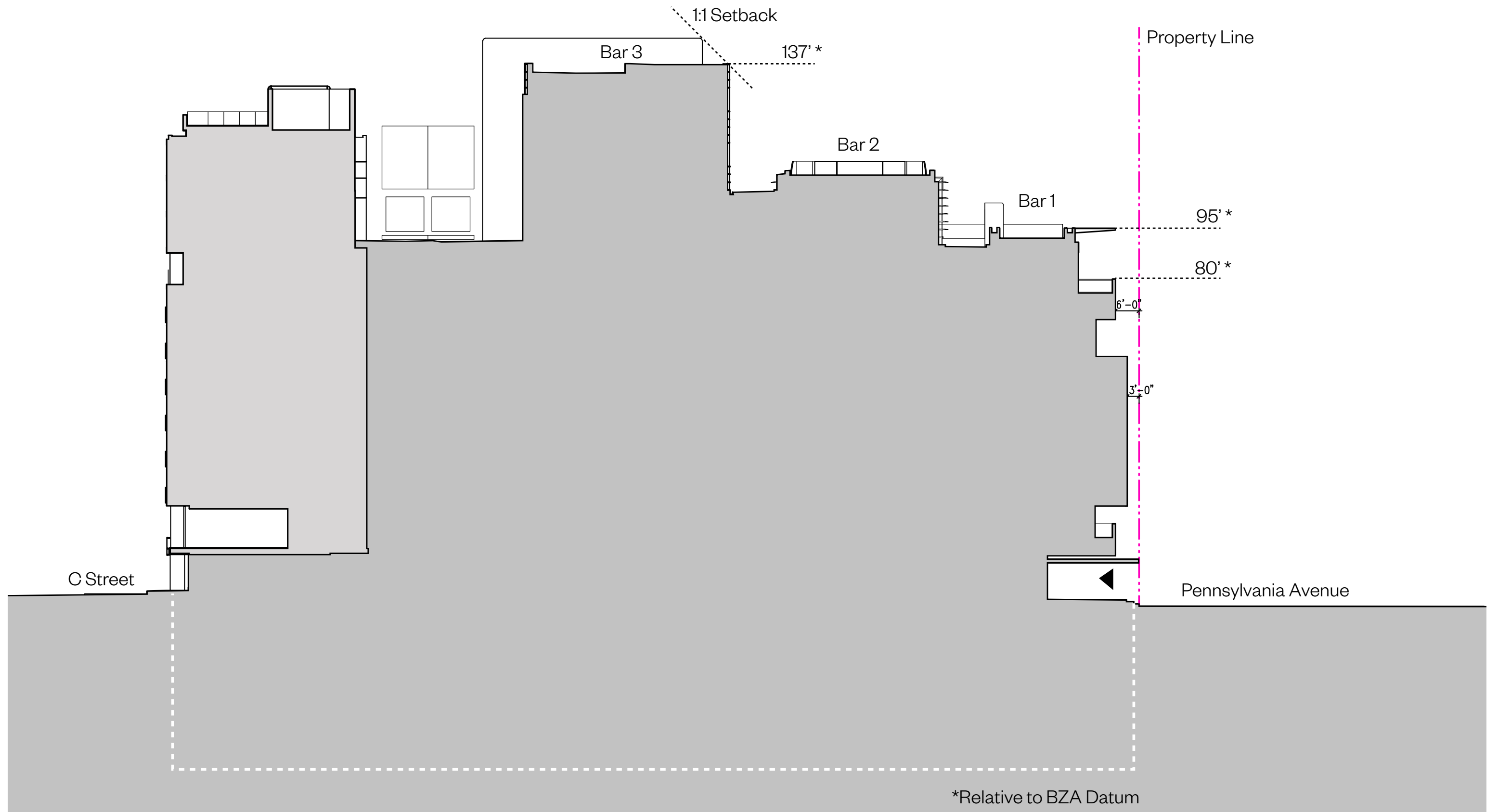
Context Original Plan Alignments



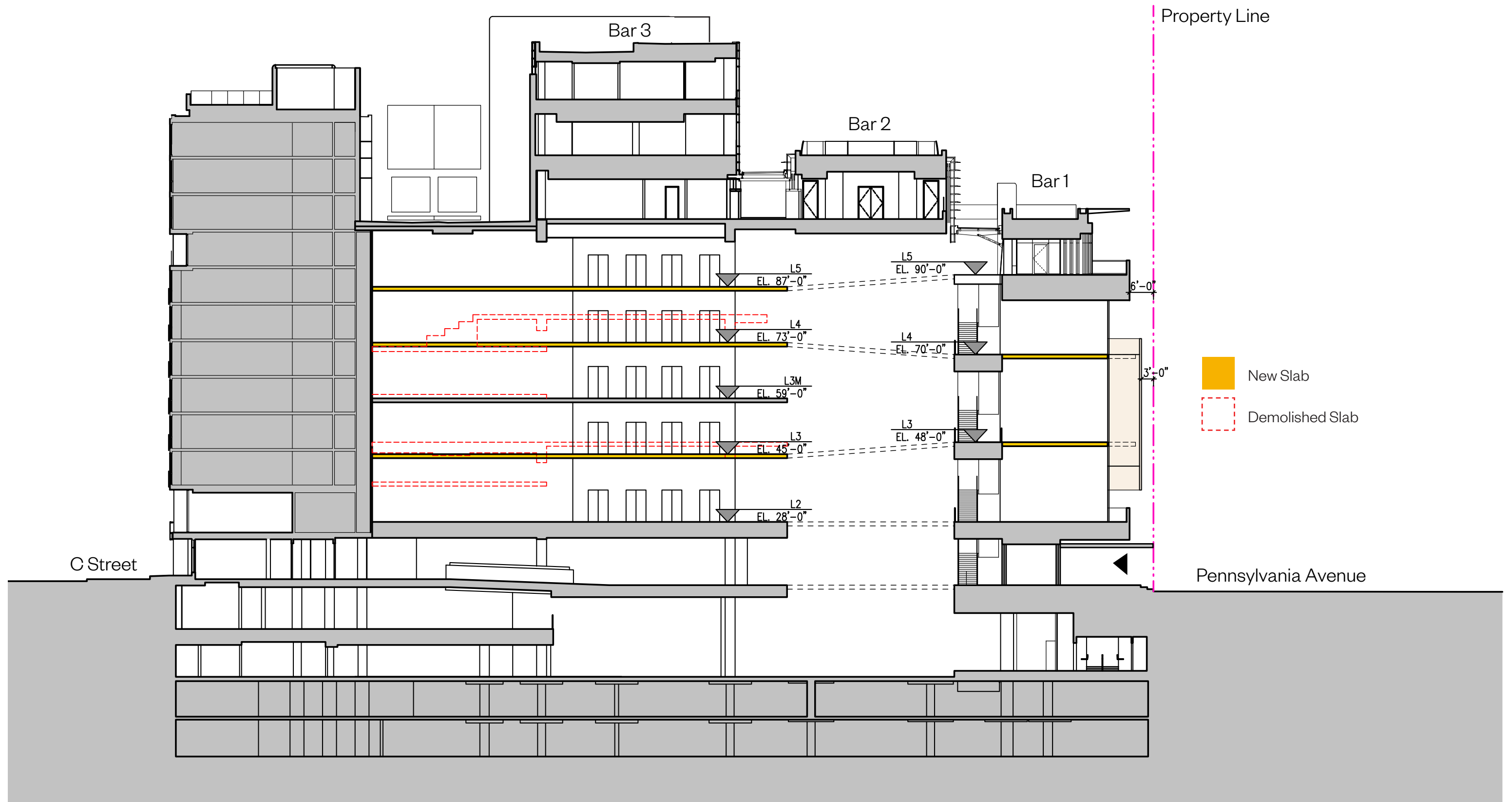
Proposed Changes to Exterior



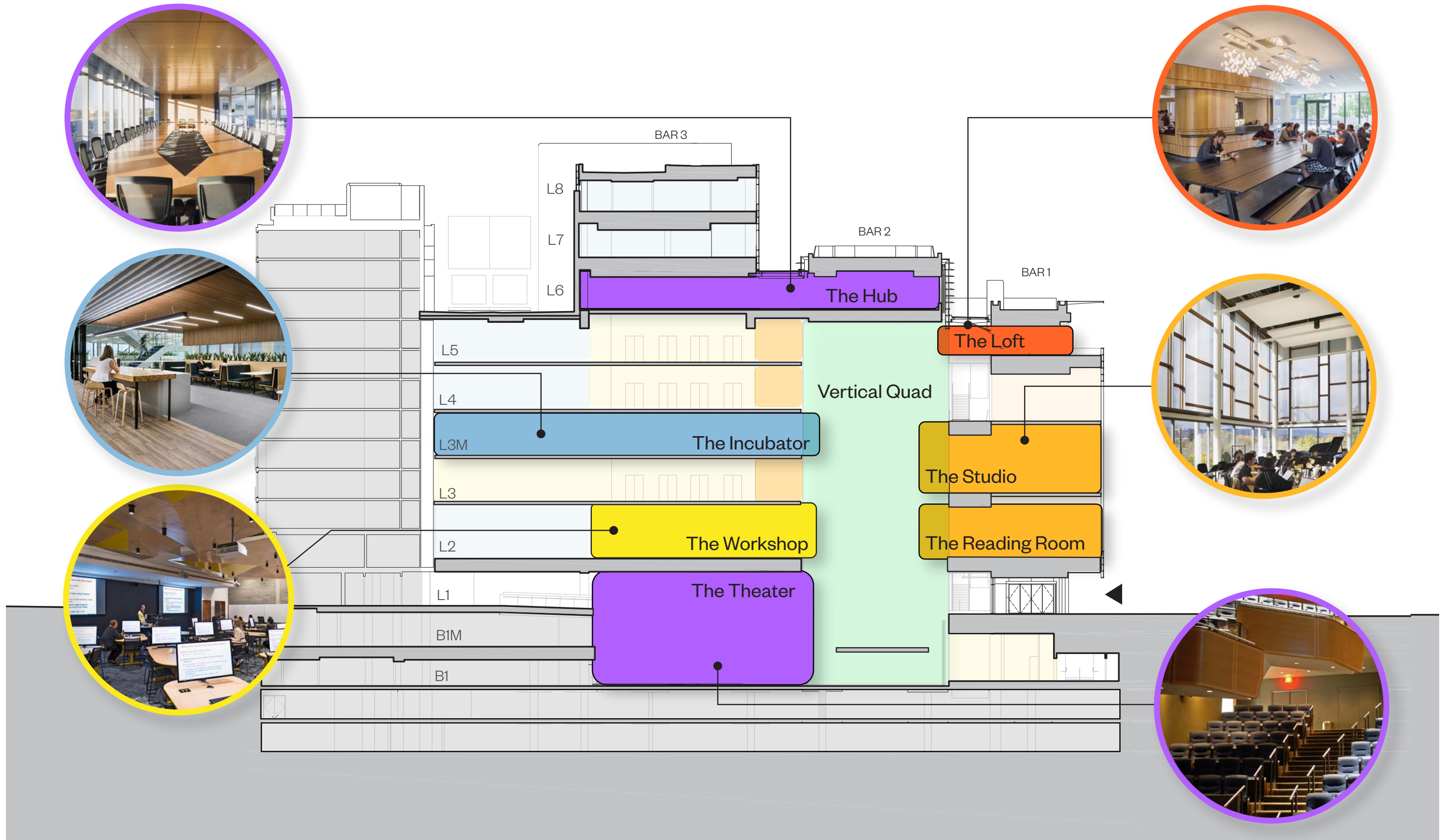
Context Original Vertical Alignments



Cross Section Looking East



Cross Section Looking East



Vertical Quad Section Concept

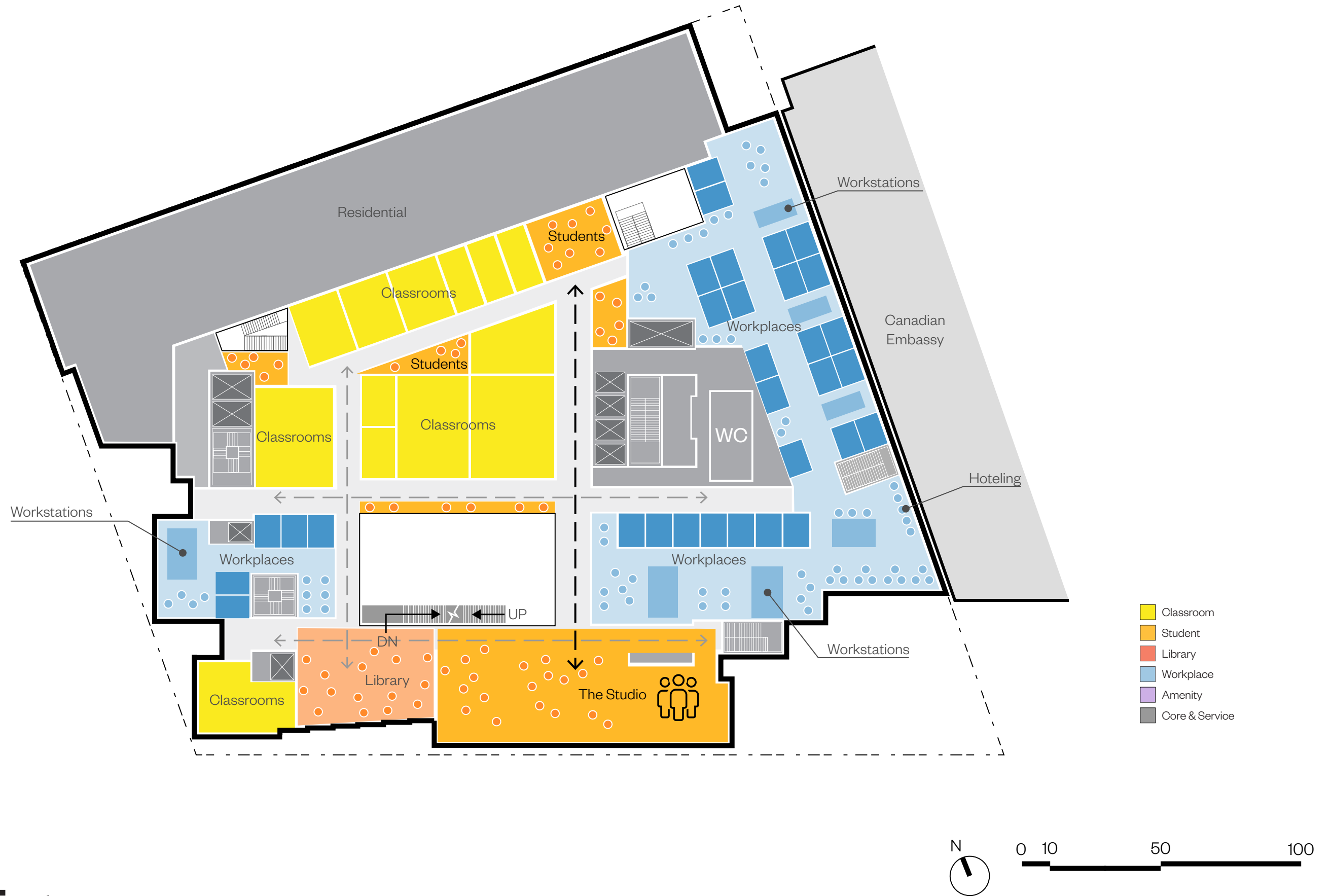
Program and Planning



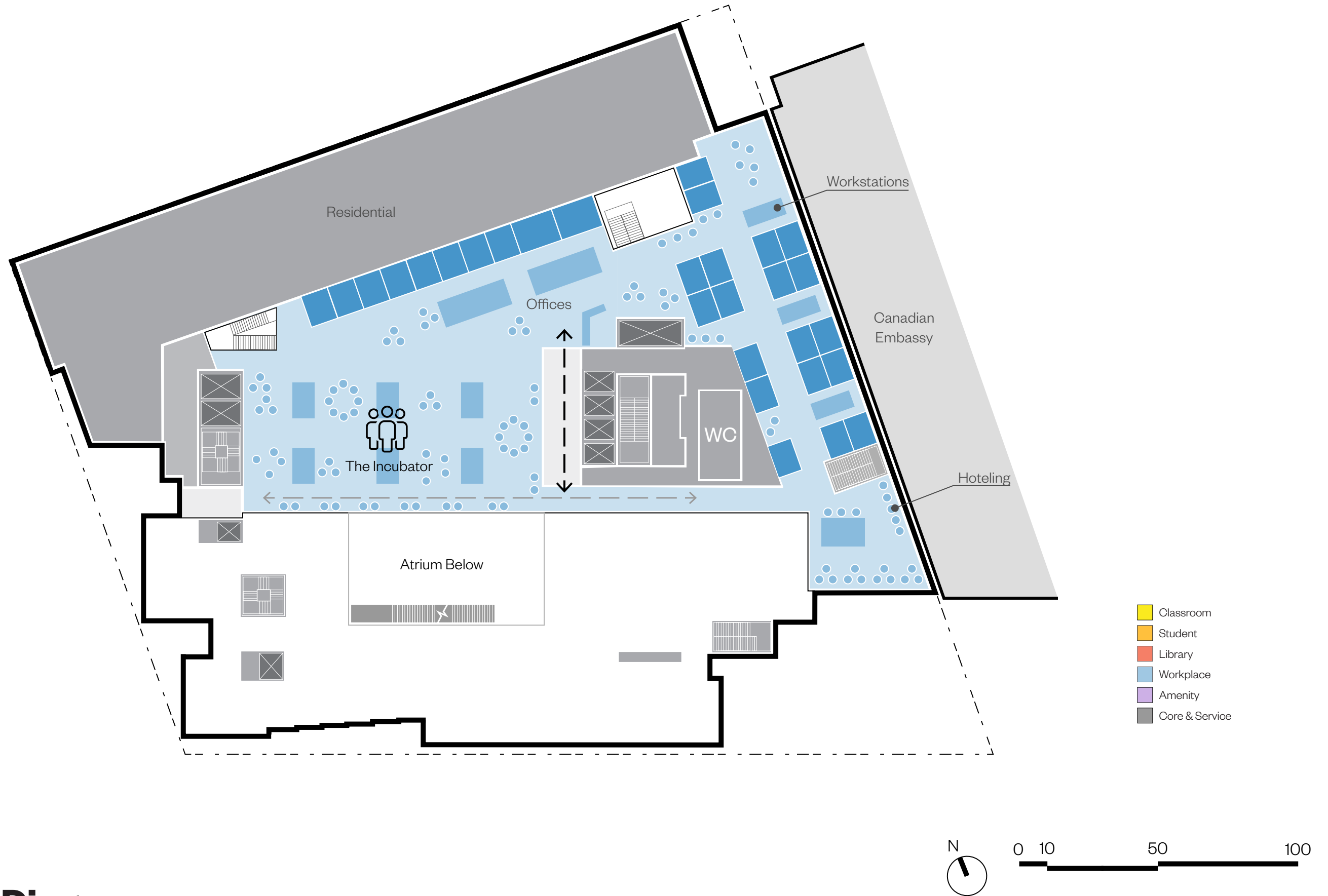
Level 1 Plan Diagram



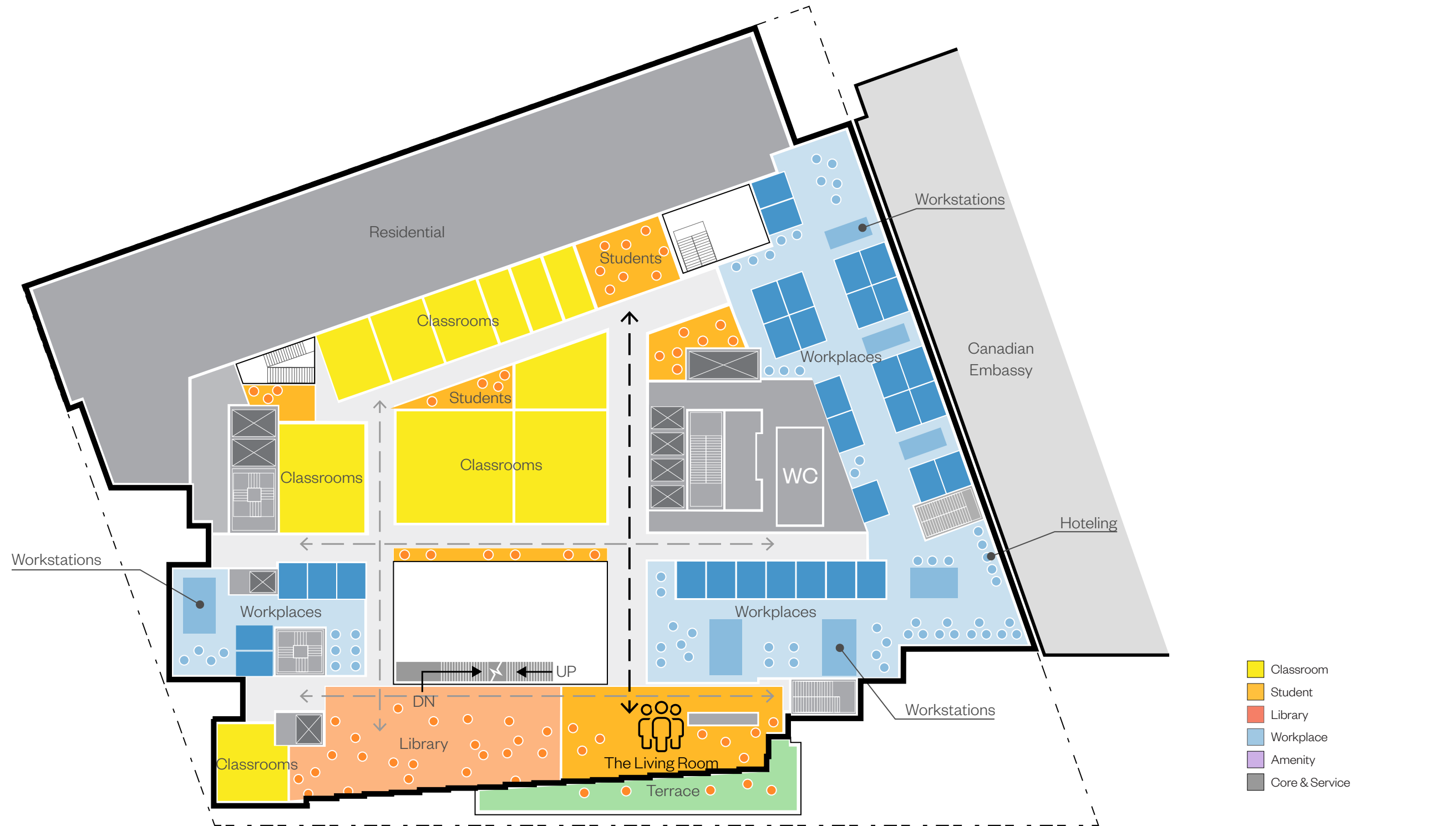
Level 2 Plan Diagram



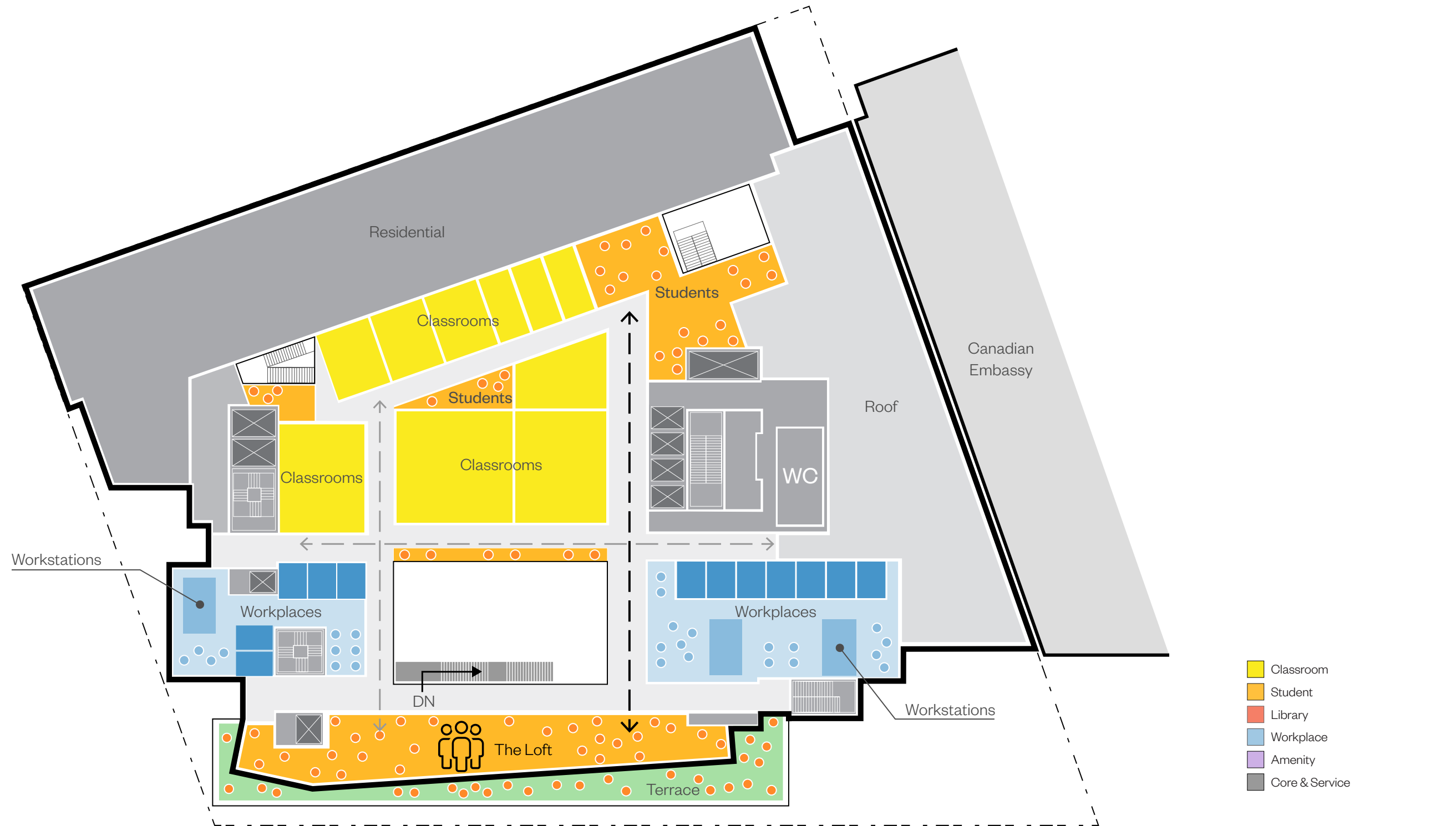
Level 3 Plan Diagram



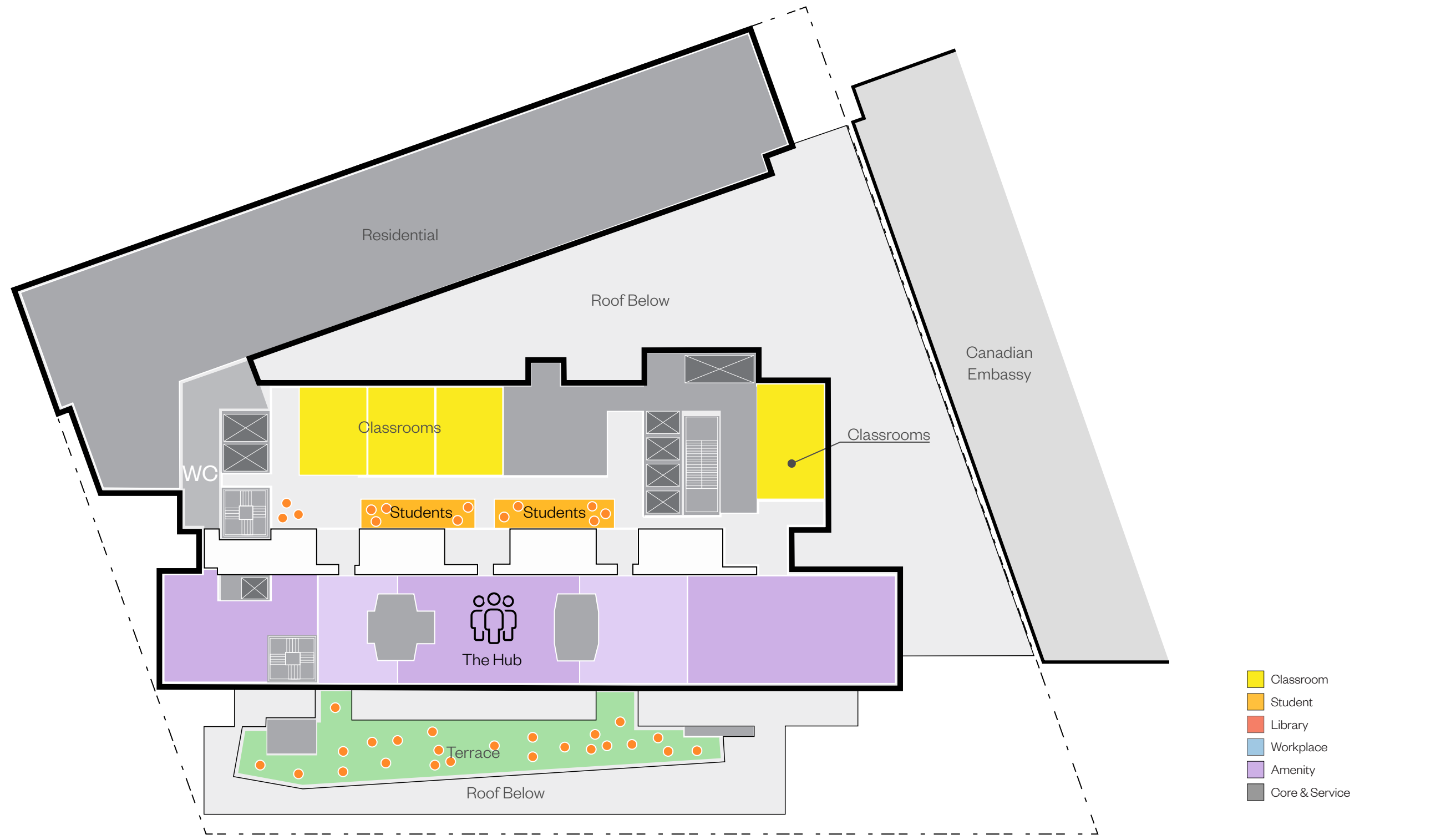
Level 3M Plan Diagram



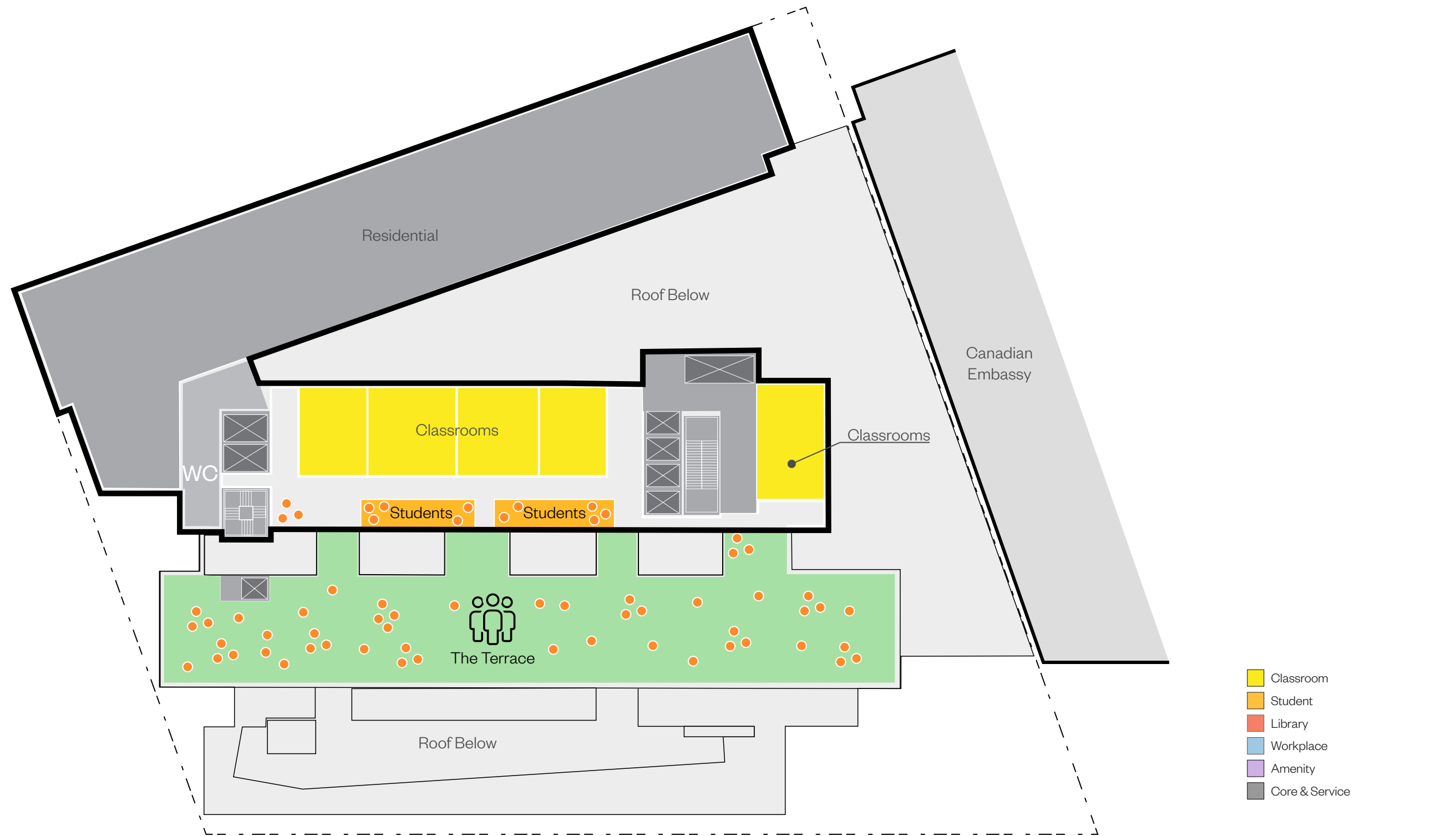
Level 4 Plan Diagram



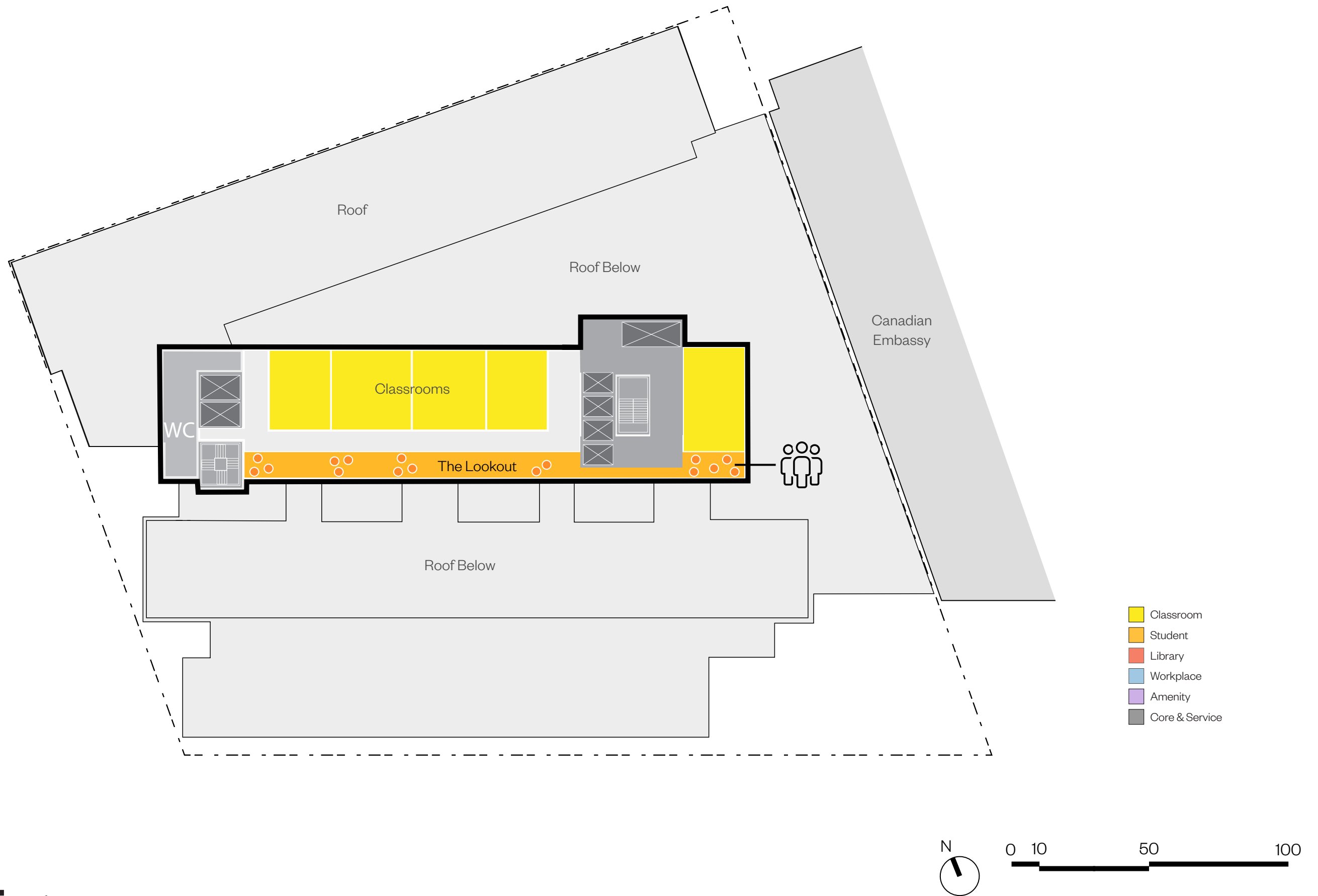
Level 5 Plan Diagram



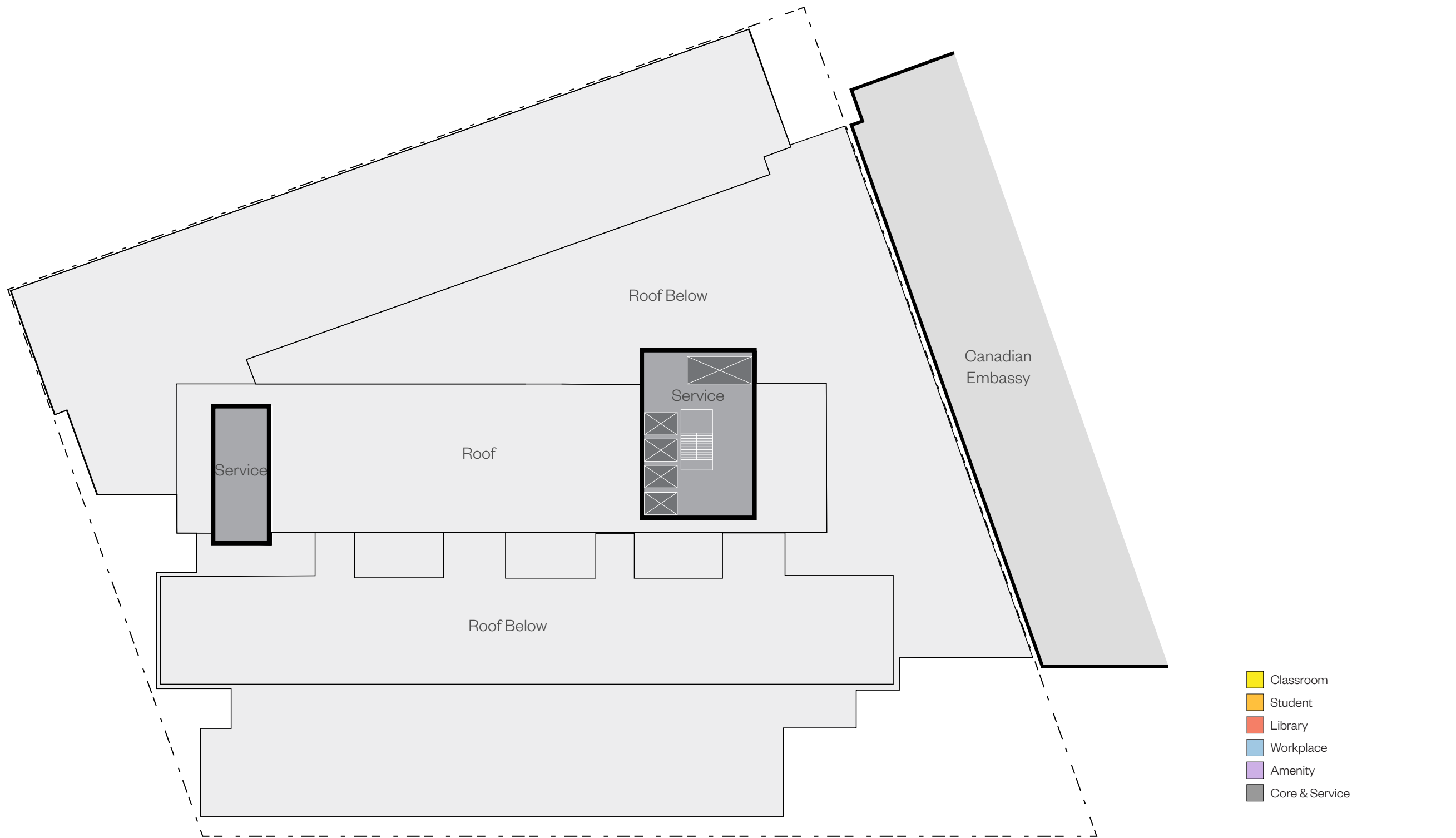
Level 6 Plan Diagram



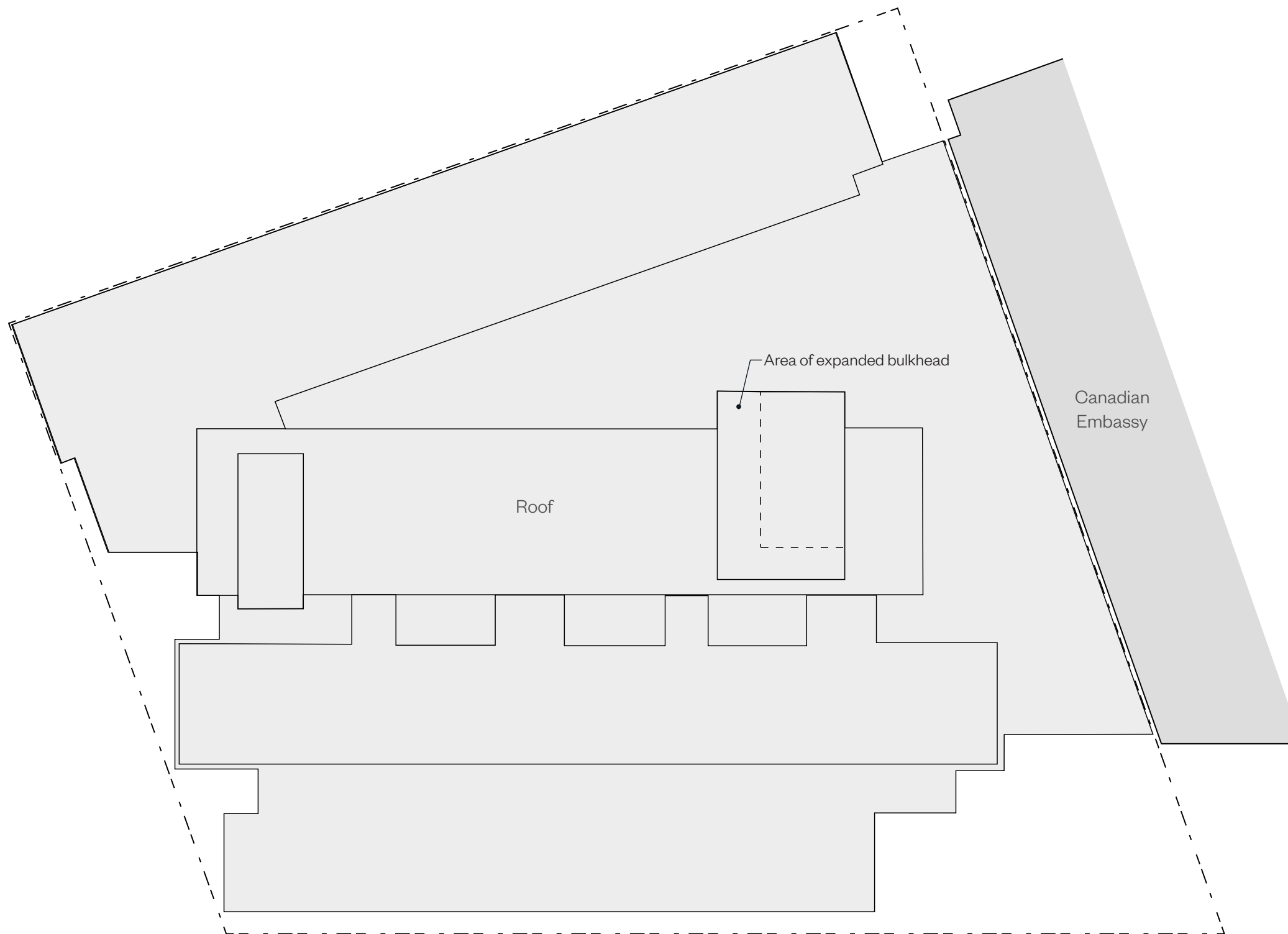
Level 7 Plan Diagram



Level 8 Plan Diagram



Roof Plan



- Classroom
- Student
- Library
- Workplace
- Amenity
- Core & Service



0 10 50 100

Bulkhead Plan

Materiality



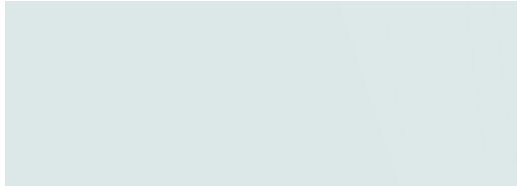
Tennessee marble - Pink



Indiana limestone



Indiana limestone



Clear glass



Brown Stone



Sandstone

Identity Pennsylvania Avenue Material Palette



601 Pennsylvania Avenue
Indiana Limestone and Brownstone



Canadian Embassy
Assumed mix of St. Marc Limestone from Canada and perhaps St. Clair Limestone from Ohio (according to Polycor Canadian Stone)



Pennsylvania Avenue
Existing Brick Paving



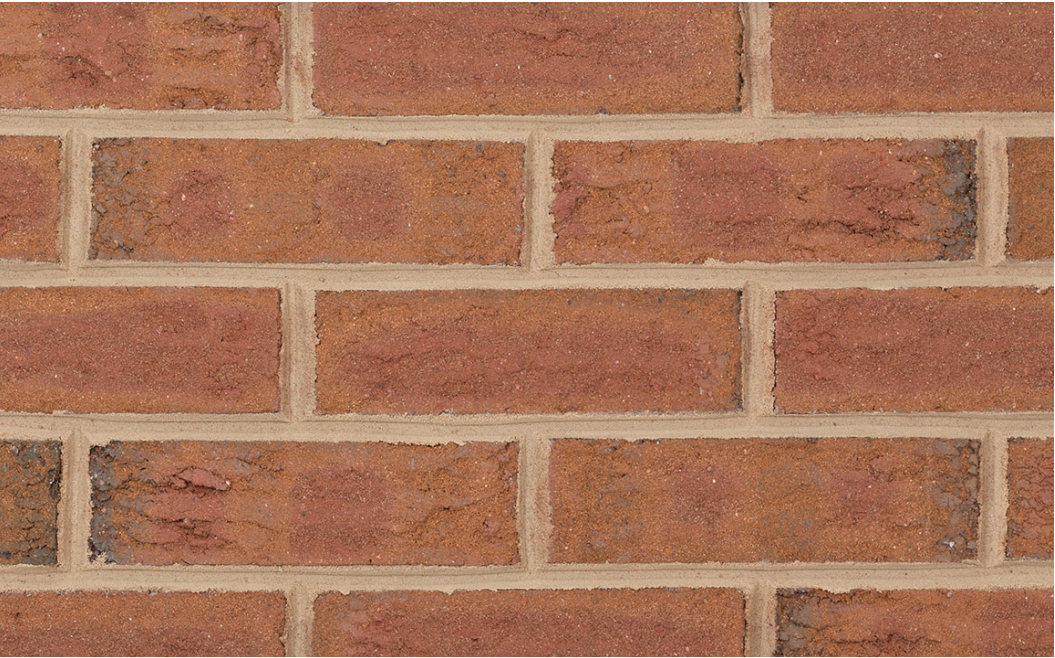
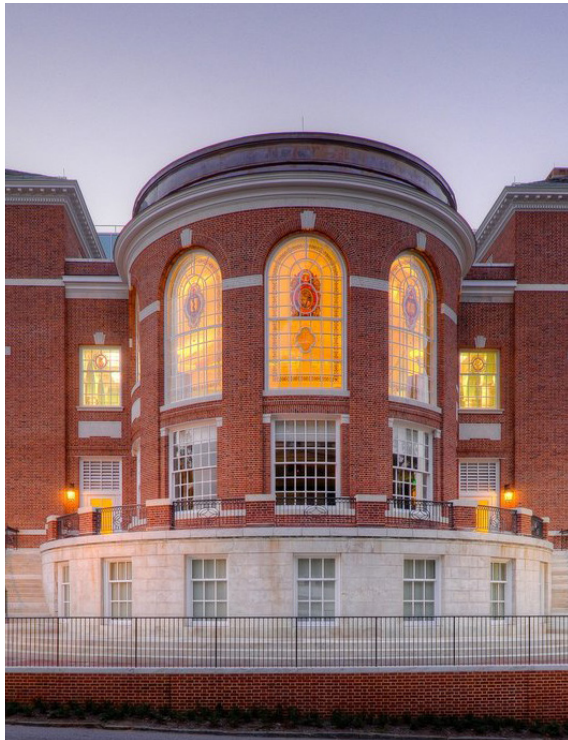
Federal Trade Commission
Indiana Limestone Above Mount Airy (North Carolina) Granite Base



National Gallery of Art West Building
Tennessee Pink Marble (Asbury Pink or Grannox Grey from Knoxville)



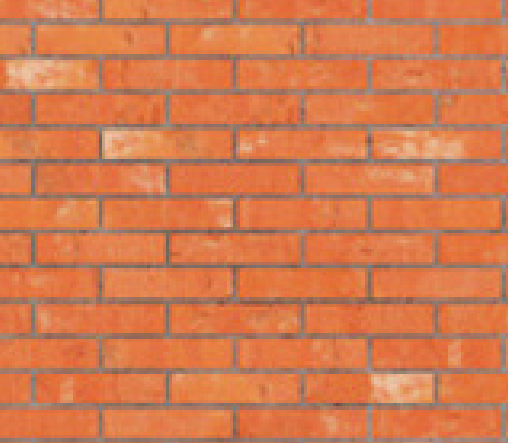
National Gallery of Art East Building
Originally Tennessee Pink Marble to match West Wing. Recent stair work includes dark Rose/Endsley and Cedar (all vein cut)



Brick - Red variations



Marble



Brick - Orange variations



Limestone



Copper/Bronze



Grey slate shingles



Clear glass

Identity Johns Hopkins Baltimore Material Palette



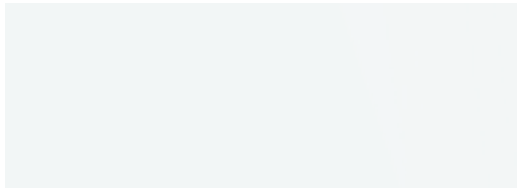
Tennessee marble - Pink



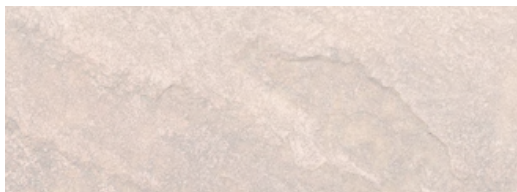
Indiana limestone



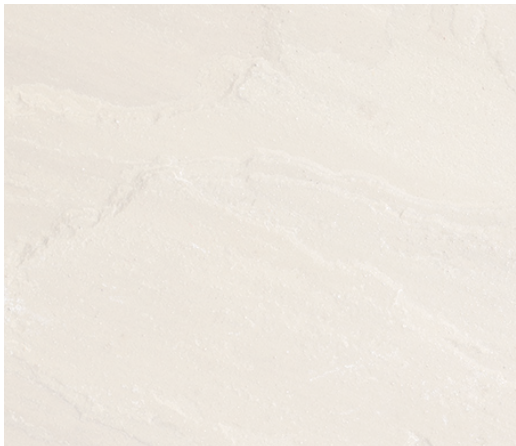
Indiana limestone



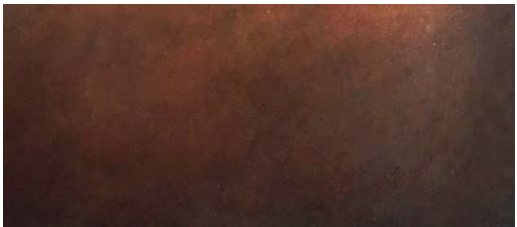
Clear glass



Brown Stone



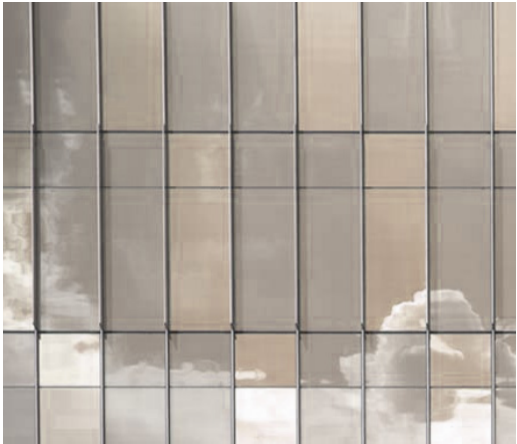
Sandstone



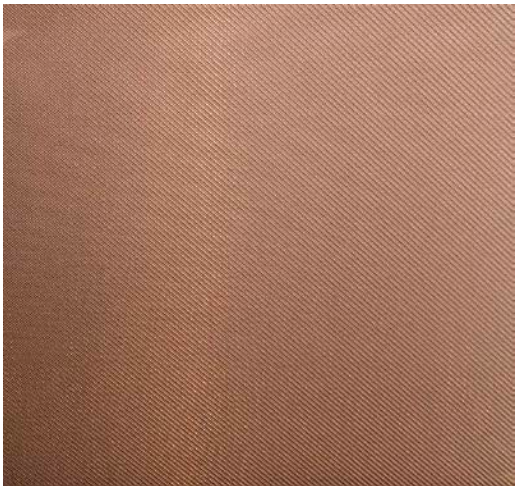
Copper/ Bronze



Tennessee marble - Pink



Glass



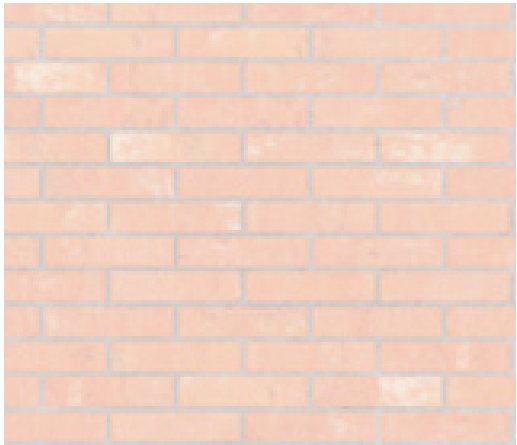
Copper interlayer



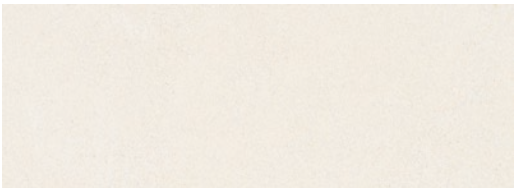
Brick - Red variations



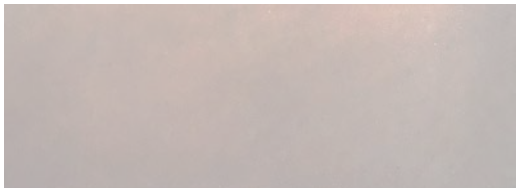
Marble



Brick - Orange variations



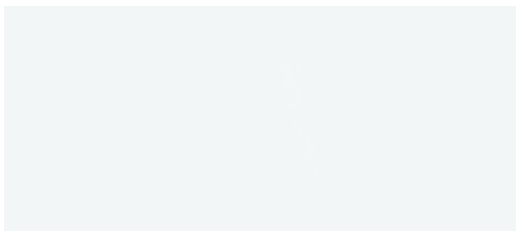
Limestone



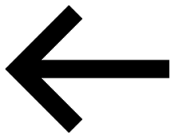
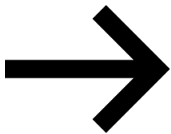
Copper/Bronze



Grey slate shingles



Clear glass



Identity Adding Stone, Copper, and Bronze



Stanford Law School



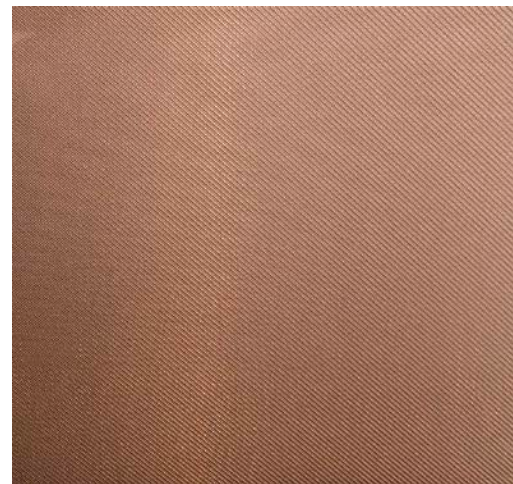
Copper/ Bronze



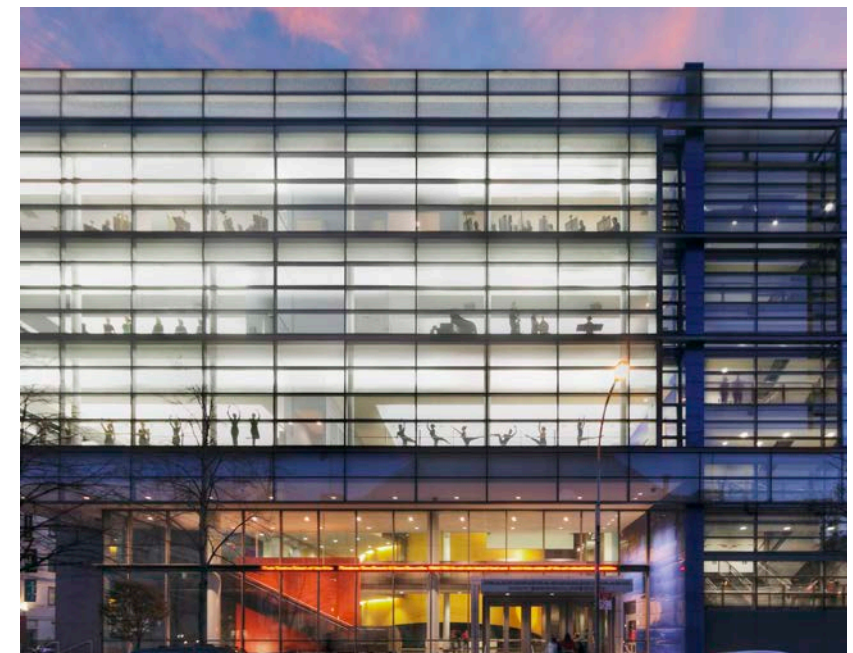
Tennessee marble - Pink



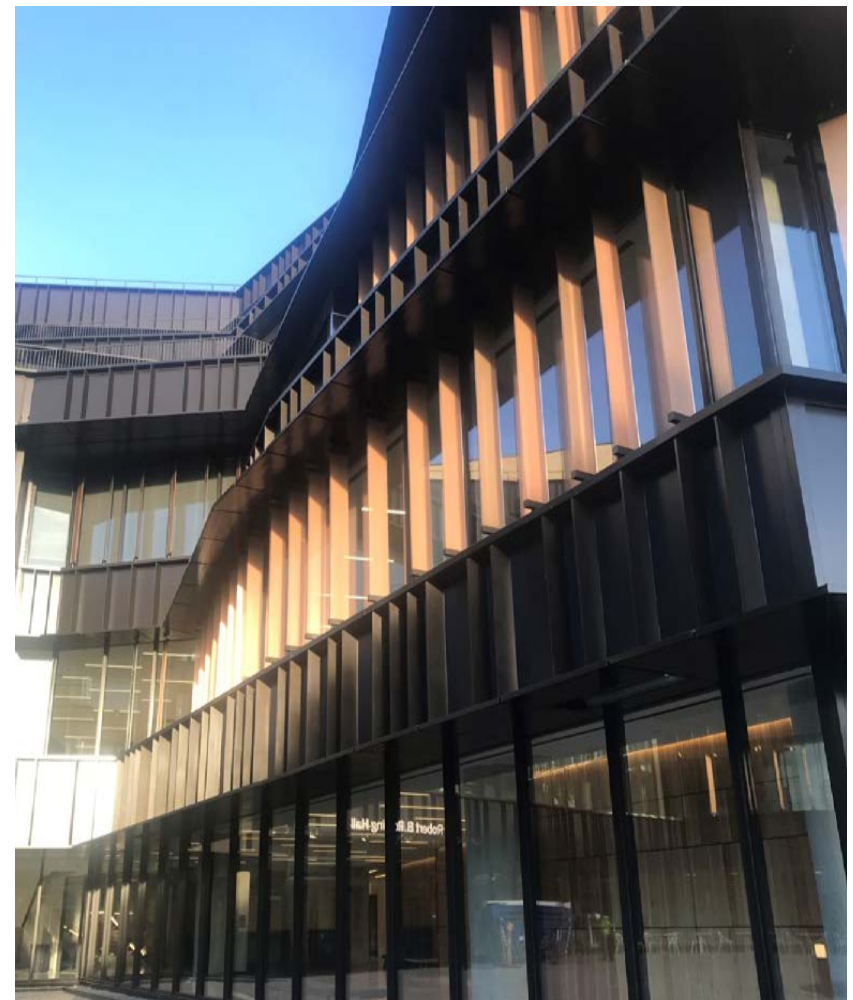
Glass



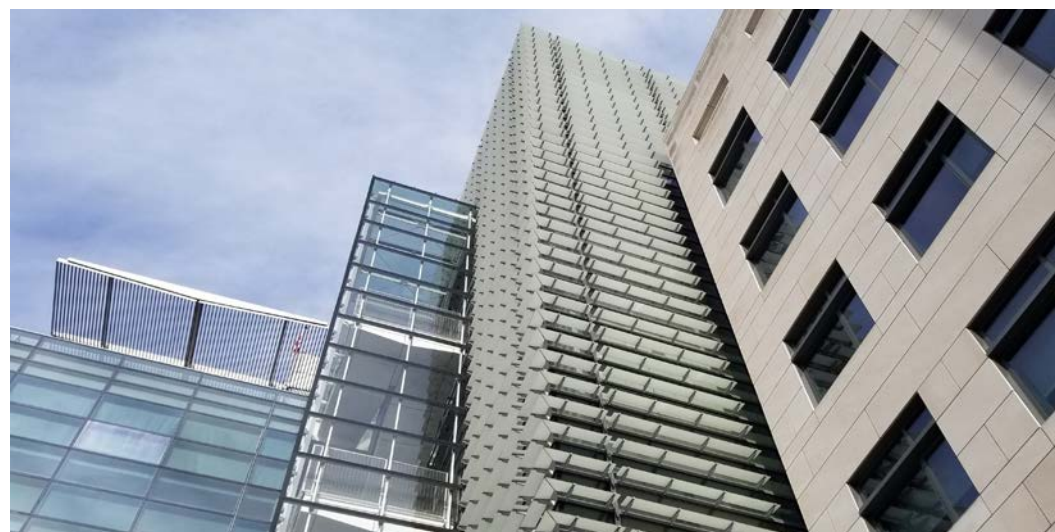
Copper interlayer



Frank Sinatra School of the Arts



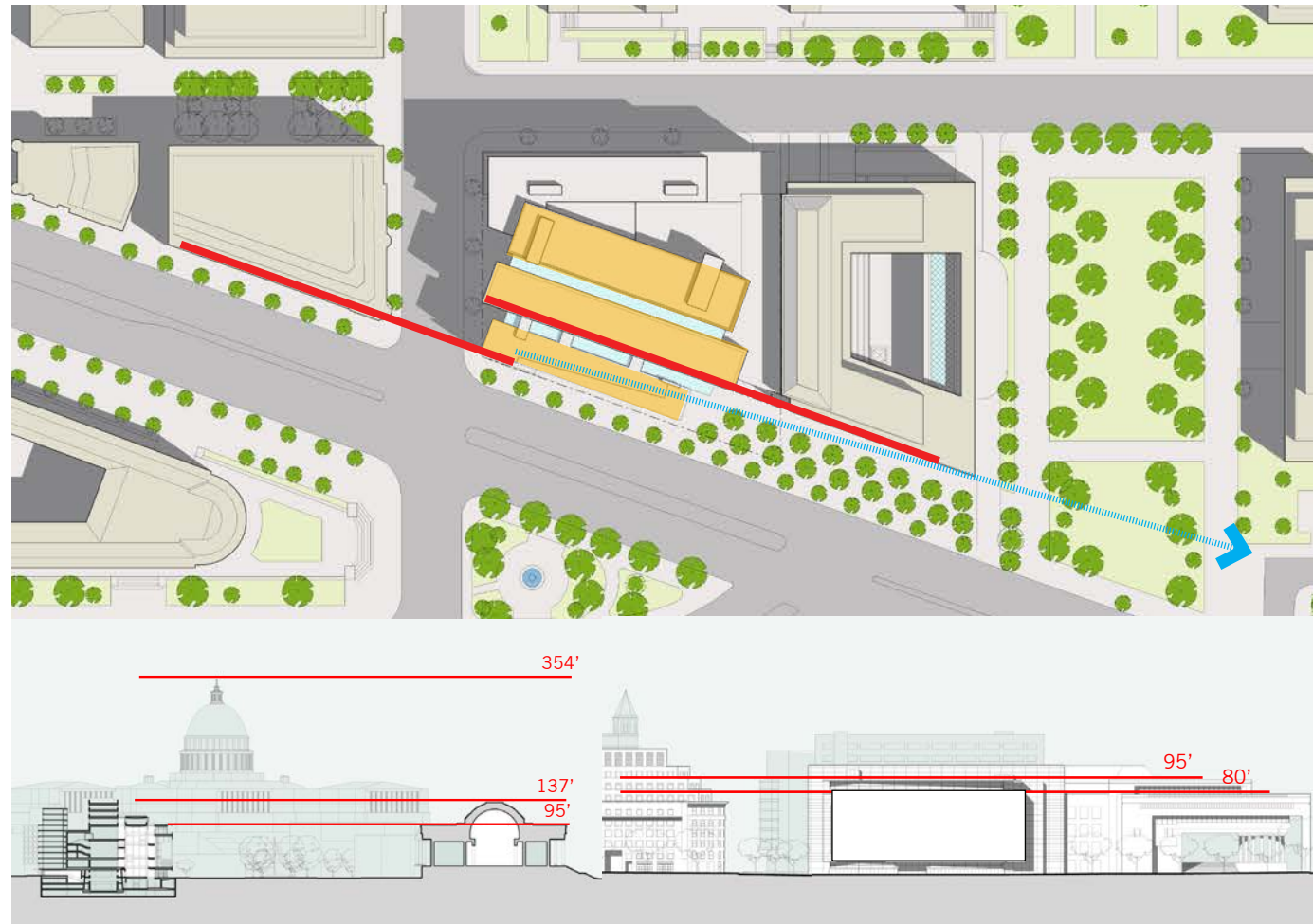
McCombs School of Business, University of Texas



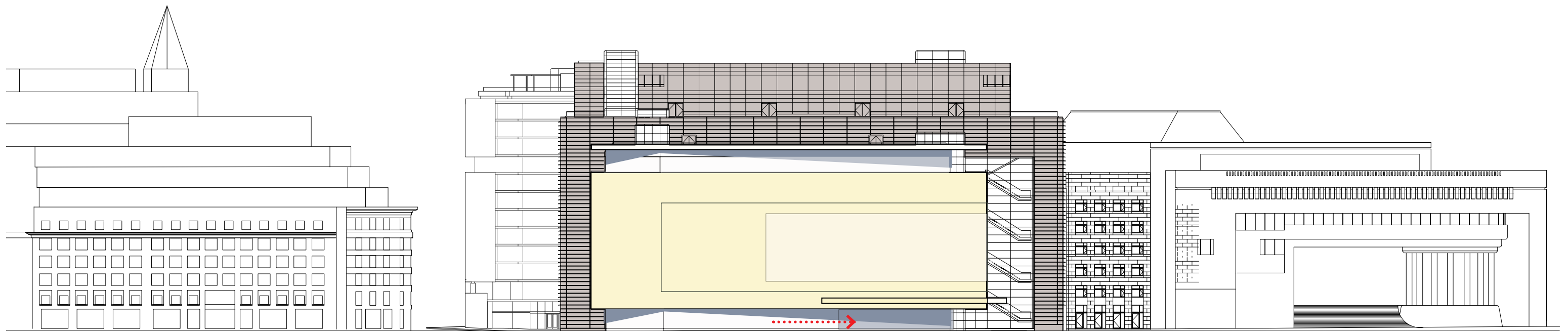
Newseum

Precedents Stone, Glass, Metal, Copper, Bronze & Existing Context

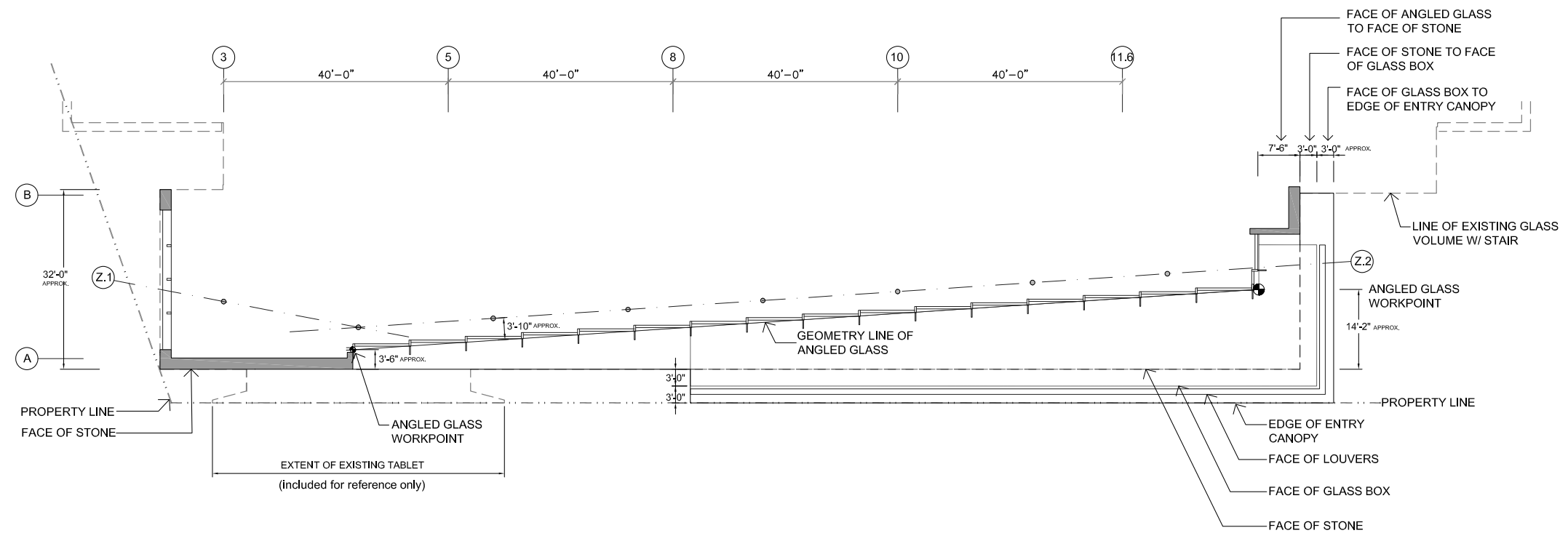
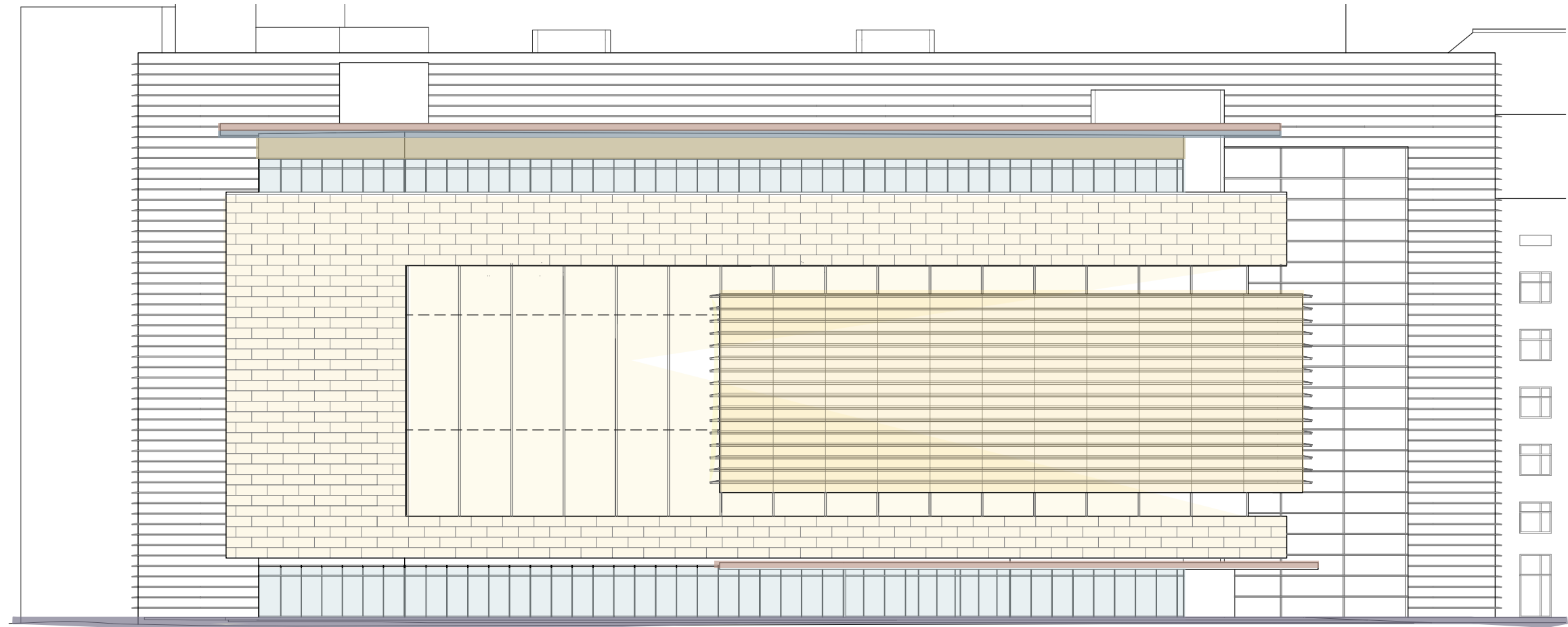
Facade Development



- Include compositional component(s) to express monumentality, provide compositional balance and modulate scale along Pennsylvania Avenue.
- Relocate entry eastward to enhance existing mid-block plaza.
- Establish JHU identity through materiality, scale and entry portal.
- Provide approximately 50% more stone surface without penalty to daylight access & views.
- Optimize daylight, shading and views for interior spaces.
- Maintain facade alignments with Canadian Embassy and National Gallery with optimized views towards U. S. Capitol.



Facade Design Principles



Elevation Development with Texture & Geometry - Bar 1



Southeast Perspective Daytime



Southeast Perspective Evening



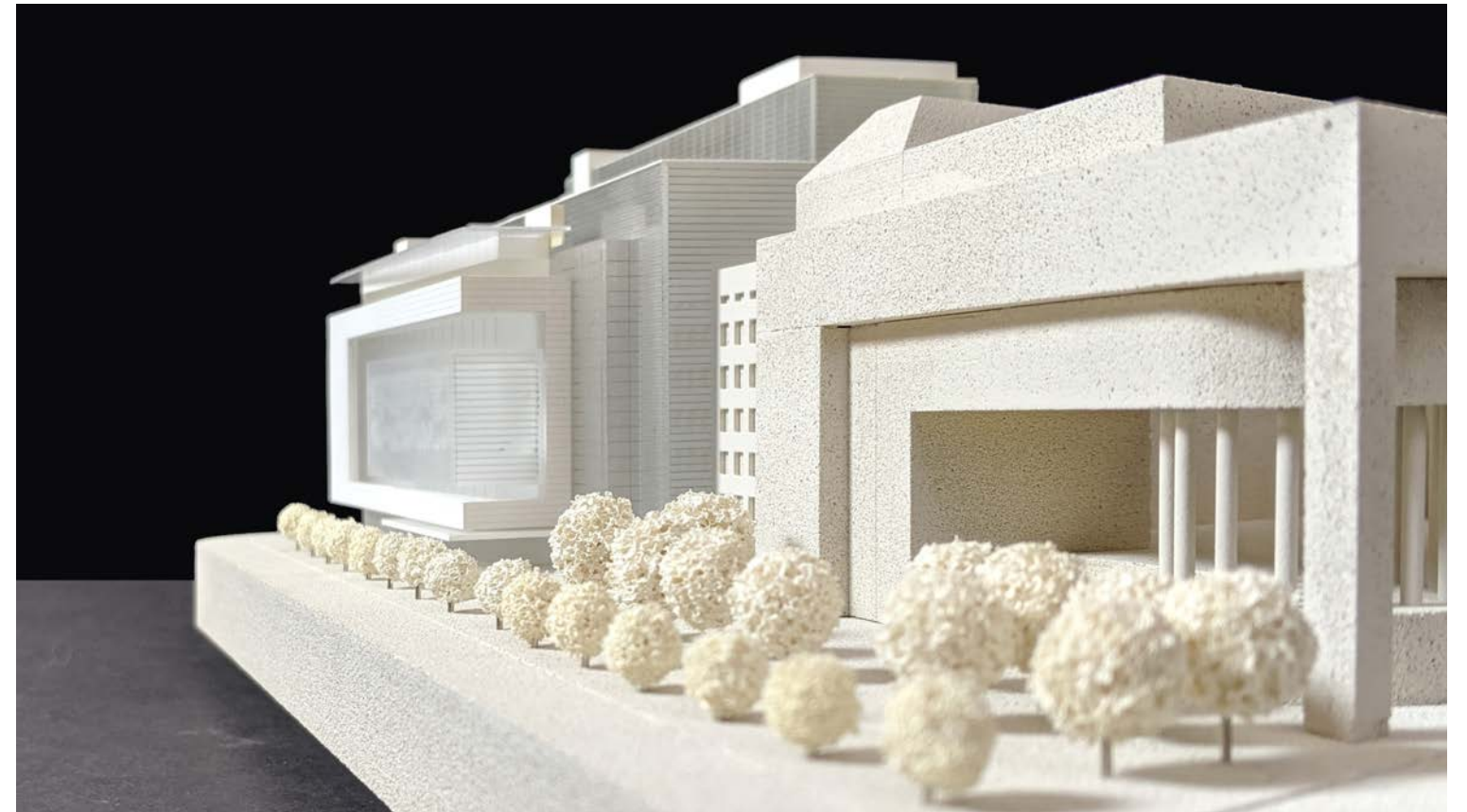
Southwest Perspective



Street View Looking East



Street View Looking West



Study Model